

# Panasonic

Owner's Manual

## Compact Stereo System

Bluetooth®

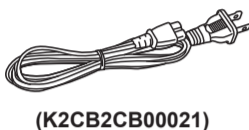
Model No. **SC-HC05**

### Supplied Accessories

Check and identify the supplied accessories. Use numbers indicated in parentheses when asking for replacement parts. (Product numbers correct as of January 2011. This may be subject to change.)

To order accessories, refer to "Accessory Purchases (United States and Puerto Rico)" on the next page.

1 x AC power supply cord



(K2CB2CB00021)

1 x Remote control



(RAK-SC989ZM)

1 x Lithium Button-Type battery

(Battery is already installed in the remote control.)



As an ENERGY STAR® Partner, Panasonic has determined that this product meets the ENERGY STAR® guidelines for energy efficiency.

Panasonic Consumer Electronics Company,  
Division of Panasonic Corporation of North America  
One Panasonic Way, Secaucus,  
New Jersey 07094  
<http://www.panasonic.com>

P E n S p

© Panasonic Corporation 2011  
Printed in China

**FLE - Confidential**  
Until: May 2011

RQTX1316-P  
L0111HH0

## IMPORTANT SAFETY INSTRUCTIONS

Read these operating instructions carefully before using the unit. Follow the safety instructions on the unit and the applicable safety instructions listed below. Keep these operating instructions handy for future reference.

- Read these instructions.
- Keep these instructions.
- Heed all warnings.
- Follow all instructions.
- Do not use this apparatus near water.
- Clean only with dry cloth.
- Do not block any ventilation openings. Install in accordance with the manufacturer's instructions.
- Do not install near any heat sources such as radiators, heat registers, stoves, or other apparatus (including amplifiers) that produce heat.
- Do not defeat the safety purpose of the polarized or grounding-type plug. A polarized plug has two blades with one wider than the other. A grounding-type plug has two blades and a third grounding prong. The wide blade or the third prong are provided for your safety. If the provided plug does not fit into your outlet, consult an electrician for replacement of the obsolete outlet.
- Protect the power cord from being walked on or pinched particularly at plugs, convenience receptacles, and the point where they exit from the apparatus.
- Only use attachments/accessories specified by the manufacturer.
- Use only with the cart, stand, tripod, bracket, or table specified by the manufacturer, or sold with the apparatus. When a cart is used, use caution when moving the cart/apparatus combination to avoid injury from tip-over.
- Unplug this apparatus during lightning storms or when unused for long periods of time.
- Refer all servicing to qualified service personnel. Servicing is required when the apparatus has been damaged in any way, such as power-supply cord or plug is damaged, liquid has been spilled or objects have fallen into the apparatus, the apparatus has been exposed to rain or moisture, does not operate normally, or has been dropped.



CAUTION: TO REDUCE THE RISK OF ELECTRIC SHOCK, DO NOT REMOVE SCREWS. NO USER-SERVICEABLE PARTS INSIDE. REFER SERVICING TO QUALIFIED SERVICE PERSONNEL.



The lightning flash with arrowhead symbol, within an equilateral triangle, is intended to alert the user to the presence of uninsulated "dangerous voltage" within the product's enclosure that may be of sufficient magnitude to constitute a risk of electric shock to persons.



The exclamation point within an equilateral triangle is intended to alert the user to the presence of important operating and maintenance (servicing) instructions in the literature accompanying the appliance.

The model number and serial number of this product can be found on either the back or the bottom of the unit. Please note them in the space provided below and keep for future reference.

MODEL NUMBER **SC-HC05**  
SERIAL NUMBER \_\_\_\_\_

#### User memo:

DATE OF PURCHASE \_\_\_\_\_  
DEALER NAME \_\_\_\_\_  
DEALER ADDRESS \_\_\_\_\_  
TELEPHONE NUMBER \_\_\_\_\_

Product identification marking is located on the bottom of unit.

The unit should be installed near an accessible AC power outlet, with the power cord connected directly to it. To completely disconnect power from the unit, unplug the power cord from the AC power outlet.

The Bluetooth® word mark and logos are owned by the Bluetooth SIG, Inc. and any use of such marks by Panasonic Corporation is under license. Other trademarks and trade names are those of their respective owners.

### FCC Note:

This equipment has been tested and found to comply with the limits for a Class B digital device, pursuant to Part 15 of the FCC Rules.

These limits are designed to provide reasonable protection against harmful interference in a residential installation. This equipment generates, uses and can radiate radio frequency energy and, if not installed and used in accordance with the instructions, may cause harmful interference to radio communications.

However, there is no guarantee that interference will not occur in a particular installation. If this equipment does cause harmful interference to radio or television reception, which can be determined by turning the equipment off and on, the user is encouraged to try to correct the interference by one or more of the following measures:

- Reorient or relocate the receiving antenna.
- Increase the separation between the equipment and receiver.
- Connect the equipment into an outlet on a circuit different from that to which the receiver is connected.
- Consult the dealer or an experienced radio/TV technician for help.

FCC caution: To maintain compliance with FCC regulations, shielded interface cables must be used with this equipment. Operation with non-approved equipment or unshielded cables may result in interference to radio and TV reception. Any changes or modifications not approved by the party responsible for compliance could void the user's authority to operate this equipment.

This device complies with Part 15 of the FCC Rules.

Operation is subject to the following two conditions:  
(1) This device may not cause harmful interference, and  
(2) this device must accept any interference received, including interference that may cause undesired operation.

Responsible Party:  
Panasonic Corporation of North America  
One Panasonic Way  
Secaucus, NJ 07094

Support Contact:  
Panasonic Consumer Electronics Company  
Telephone No.: 1-800-211-PANA (7262)



### WARNING:

To satisfy FCC RF exposure requirements for mobile transmitting devices, a separation of 20 cm or more should be maintained between the antenna of this device and persons during device operation. To ensure compliance, operations at closer than this distance are not recommended. The antenna used for this transmitter must not be co-located in conjunction with any other antenna or transmitter.

"Made for iPod" and "Made for iPhone" mean that an electronic accessory has been designed to connect specifically to iPod, or iPhone, respectively, and has been certified by the developer to meet Apple performance standards.

Apple is not responsible for the operation of this device or its compliance with safety and regulatory standards.

Please note that the use of this accessory with iPod, or iPhone may affect wireless performance.

iPhone, iPod, iPod classic, iPod nano, and iPod touch are trademarks of Apple Inc., registered in the U.S. and other countries.

### CAUTION!

DO NOT INSTALL OR PLACE THIS UNIT IN A BOOKCASE, BUILT-IN CABINET OR IN ANOTHER CONFINED SPACE. ENSURE THE UNIT IS WELL VENTILATED. TO PREVENT RISK OF ELECTRIC SHOCK OR FIRE HAZARD DUE TO OVERHEATING, ENSURE THAT CURTAINS AND ANY OTHER MATERIALS DO NOT OBSTRUCT THE VENTILATION VENTS.

### WARNING:

TO REDUCE THE RISK OF FIRE, ELECTRIC SHOCK OR PRODUCT DAMAGE,  
• DO NOT EXPOSE THIS APPARATUS TO RAIN, MOISTURE, DRIPPING OR SPLASHING AND THAT NO OBJECTS FILLED WITH LIQUIDS, SUCH AS VASES, SHALL BE PLACED ON THE APPARATUS.  
• USE ONLY THE RECOMMENDED ACCESSORIES.  
• DO NOT REMOVE THE COVER (OR BACK); THERE ARE NO USER SERVICEABLE PARTS INSIDE. REFER SERVICING TO QUALIFIED SERVICE PERSONNEL.

### CAUTION!

Danger of explosion if battery is incorrectly replaced. Replace only with the same or equivalent type recommended by the manufacturer. Dispose of used batteries according to the manufacturer's instructions.

### WARNING

Risk of fire, explosion and burns. Do not disassemble, heat above 60°C (140°F) or incinerate.

### WARNING

Keep the Button-Type battery out of reach of children to prevent swallowing.

- If you see this symbol -

Information on Disposal in other Countries outside the European Union



This symbol is only valid in the European Union. If you wish to discard this product, please contact your local authorities or dealer and ask for the correct method of disposal.

< For USA-California only >

This product contains a CR Coin Cell Lithium Battery which contains Perchlorate Material - special handling may apply. See [www.dtsc.ca.gov/hazardouswaste/perchlorate](http://www.dtsc.ca.gov/hazardouswaste/perchlorate).

## Product service

- Damage requiring service** — The unit should be serviced by qualified service personnel if:
  - The AC power supply cord or the plug has been damaged; or
  - Objects or liquids have gotten into the unit; or
  - The unit has been exposed to rain; or
  - The unit does not operate normally or exhibits a marked change in performance; or
  - The unit has been dropped or the cabinet damaged.

- Servicing** — Do not attempt to service the unit beyond that described in these operating instructions. Refer all other servicing to authorized servicing personnel.

### Product information

For product information or assistance with product operation: Refer to "Customer Services Directory (United States and Puerto Rico)".

## Specifications

### Amplifier section

**RMS output power stereo mode**  
Front Ch (both ch driven) 20 W per channel (6 Ω), 1 kHz, 10% THD  
Total RMS stereo mode power 40 W  
**FTC output power stereo mode**  
Front Ch (both ch driven) 15 W per channel (6 Ω), 20 Hz to 20 kHz, 10% THD  
Total FTC stereo mode power 30 W

### Terminal section

**AUX (rear)**  
Sensitivity 100 mV, 32 kΩ  
High level 630 mV, 32 kΩ  
Low level \_\_\_\_\_  
Terminal Stereo, 3.5 mm (1/8") jack

### Speaker section

**Type** 2 way, 2 speaker system (Passive radiator)  
**Speaker unit(s)**  
Woofer 6.5 cm (2 1/8") cone type x 1/ch  
Tweeter 1.5 cm (5/16") piezo type x 1/ch  
Passive radiators 8 cm (3 1/8") x 2/ch  
**Impedance** 6 Ω

### Bluetooth® section

**Bluetooth® system specification** Ver. 2.1 + EDR  
**Wireless equipment classification** Class 1 (2.5 mW)  
**Support profiles** A2DP, AVRCP  
**Frequency band** 2402 MHz to 2480 MHz (Adaptive Frequency Hopping)  
**Driving distance** 10 m (33 ft) line of sight (iPhone 4, at height 1 m (3.3 ft), in MODE 1)

### General

**Power supply** AC 120 V, 60 Hz  
**Power consumption** 16 W  
**Dimensions (W x H x D)** 370 mm x 176 mm x 85 mm (14 1/2" x 7" x 3 1/2") [D= 121 mm (4 3/4") dock open]  
**Mass (Weight)** 1.8 kg (9 lb.)  
**Operating temperature range** 0°C to +40°C (+32°F to +104°F)

### Operating humidity range

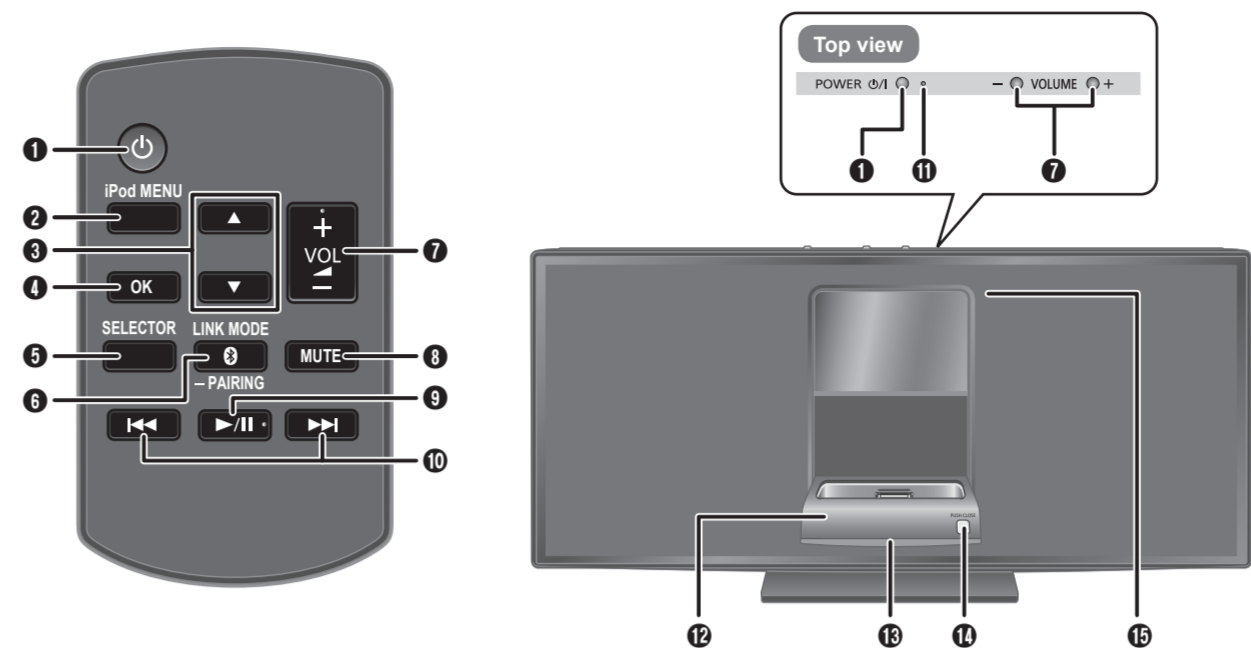
35% to 80% RH (no condensation)

**Power consumption in standby mode** 0.05 W (approximate)

### Note:

- Specifications are subject to change without notice. Mass and dimensions are approximate.
- Total harmonic distortion is measured by the digital spectrum analyzer.

## Overview of controls



- Standby/on switch** [0], [ON], POWER Press to switch the unit from on to standby mode or vice versa. In standby mode, the unit is still consuming a small amount of power.

- View the iPod or iPhone menu

- Select an item

- Confirm a selection Set or cancel the auto off function

- Select iPod, Internet radio, Bluetooth® or AUX mode

- Start Bluetooth® pairing mode Select Bluetooth® link mode Adjust the audio input level in AUX mode

- Adjust the volume of the system

- Mute the sound of the system** In iPod or AUX mode : The light blue status blinks continuously. In Bluetooth® mode : The blue and light blue status indicators blink alternately. Press the button again to cancel. Mute is also canceled when you adjust the volume or when you switch off the system.

- Start or pause playback

- Skip or search track

- Power indicator On : The system is on Off : The system is in standby mode

- iPod or iPhone dock

- Status indicator** Green : iPod mode Blue : Bluetooth® mode Light blue : Set or cancel the auto off function Off : AUX mode The green status indicator blinks each time a remote control button is pressed.

- [PUSH CLOSE]** Press while closing the dock.

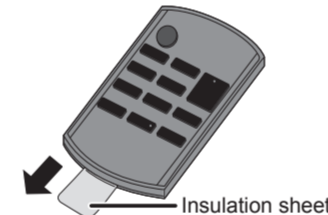
- Remote control sensor** Point the remote control at the remote control sensor, away from obstacles, at a maximum range of 7 m (23 ft) directly in front of the main unit.

## Getting started

### Remote control

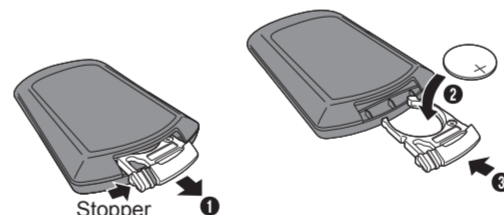
#### Before using

Remove the insulation sheet before you use the remote control for the first time.



### Replacing the battery

Replace the remote control battery when it stops operating or when the range is decreased. Replace with a new battery (CR2025) only.



- While pressing the stopper, pull out the battery holder.

- Insert a new battery with the (+) side facing up.

- Push the battery holder back fully.

### CAUTION!

- Insert with poles aligned.
- Do not touch the terminals (+ and -) with metal objects.
- Do not recharge, disassemble, remodel, heat or throw into fire.
- Keep out of reach of children.
- Do not heat or expose to flame.
- Do not leave the battery(ies) in an automobile exposed to direct sunlight for a long period of time with doors and windows closed.
- Remove the battery if you do not use the remote control for a long period of time. Keep in a cool, dark area.

If any electrolyte should come into contact with your hands or clothes, wash it off thoroughly with water. If any electrolyte should come into contact with your eyes, never rub the eyes. Rinse eyes thoroughly with water, and then consult a doctor.

## Remote control code

When other Panasonic equipment responds to the remote control of this system, change the remote control code for this system.

### To set the code to "2"

Press and hold [MUTE] and [▲] for a minimum of 4 seconds. The green status indicator blinks 10 times.

### To set the code to "1"

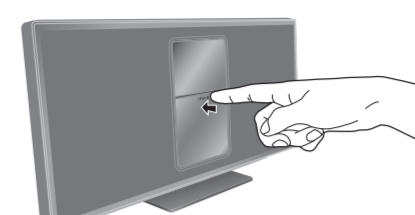
Press and hold [MUTE] and [▼] for a minimum of 4 seconds. The green status indicator blinks 10 times.

## Using an iPod or iPhone

### Basic playback

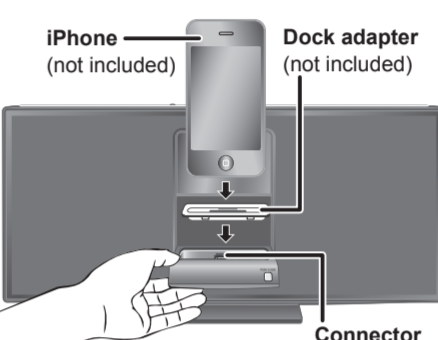
**Preparation** Make sure to remove the iPod or iPhone from its case.

- Push [▲], [iPod] to open the dock.



- Insert a compatible dock adapter.

- Connect the iPod or iPhone. The status indicator changes to green.



Hold the dock when connecting or disconnecting the iPod or iPhone.

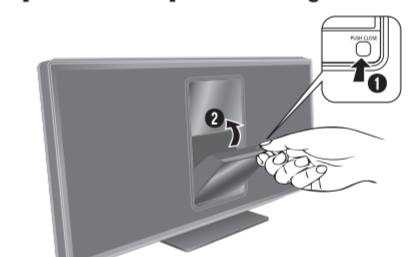
- Press [▶/II] to start playback.

Pause playback	Press [▶/II].
Skip track	Press [◀◀] or [▶▶].
Search track	Press and hold [◀◀] or [▶▶].
View the iPod or iPhone menu	Press [iPOD MENU].
Select an item	Press [▲] or [▼] and then press [OK].

### To close the dock

- Disconnect the iPod or iPhone.

- Press [PUSH CLOSE] while closing the dock.



### Note:

- Make sure to align your iPod or iPhone with the connector when inserting.
- Make sure to press [PUSH CLOSE] while closing the dock to prevent damage.
- Depending on the model, it may be necessary to remove the iPod or iPhone and select the album, artist, etc. on the iPod or iPhone.
- Operation results may vary depending on the iPod or iPhone models.
- Read the User Guide of the iPod or iPhone for operating instructions.

## Listening to the Internet radio

You can listen to a radio station on the Internet if you install the "vTuner for Panasonic" application on your iPod touch or iPhone. Download this application from the App Store.

**Note:** For compatible iPod touch and iPhone models and instructions on how to use the "vTuner for Panasonic" application, refer to: <http://radio.vtuner.com/panasonic/en>

### Preparation

Install "vTuner for Panasonic" on your iPod touch or iPhone. Connect your iPod touch or iPhone to the Internet. Go to the Home screen of the iPod touch or iPhone.

- Connect the iPod touch or iPhone.

- Press [SELECTOR] to start the application.

## Using the auto off function

When you are in AUX or iPod mode, the system automatically switches off if you do not use it for approximately 30 minutes.

- Press [SELECTOR] to select AUX mode. Status indicator: off

- Press and hold [OK]. ON → OFF (default)

ON : The light blue status indicator blinks 2 times.  
OFF : The light blue status indicator blinks 1 time.

### Note:

- This function does not work when a Bluetooth® device is connected.
- 1 minute before the system switches off, the power indicator blinks.

## Maintenance

To clean this system, wipe with a soft, dry cloth.

- Never use alcohol, paint thinner or benzine to clean this system.
- Before using chemically treated cloth, read the instructions that came with the cloth carefully.

## Using Bluetooth®

You can connect and play an audio device wirelessly through Bluetooth®.

**Panasonic bears no responsibility for data and/or information that can possibly be compromised during a wireless transmission.**

### Preparación

Switch on the Bluetooth® feature of the device and put the device near the system. Read the operating instructions of the device for details.

The blue status indicator can indicate different Bluetooth® conditions:

Blinks quickly	The system is ready for pairing.
Blinks slowly	The system is waiting to connect.
Lighted	A Bluetooth® device is connected.

### Pairing and connecting a device

**1 Press [SELECTOR] to select Bluetooth® mode.**  
Status indicator: blue

**2 Access the Bluetooth® menu of the device and search for "SC-HC05".**

**3 Pair or connect the device to "SC-HC05".**

If prompted for a passkey, input "0000".  
The device connects with this system automatically after pairing is complete.

### Note:

- A device must be paired to connect.
- This system can only connect to one device at a time.
- A device stays connected even if the system is switched to iPod or AUX mode.

### Pairing with additional devices

**1 Press [SELECTOR] to select Bluetooth® mode.**

**2 Press and hold [0, -PAIRING].**

**3 Access the Bluetooth® menu of the device and search for "SC-HC05".**

**4 Pair or connect the device to "SC-HC05".**

You can pair up to 6 devices with this system. If a 7th device is paired, the device with the oldest connection history will be replaced.

You only have to do pairing once, unless:

- The pairing of the device has been replaced.
- The memory of this system has been reset.
- The pairing of "SC-HC05" has been deleted from the device.

### Disconnecting a device

A device is disconnected when you:

- Switch off the system or the device.
- Move the device out of the maximum range.
- Stop or disable the Bluetooth® transmission of the device.

### Basic playback

**1 Press [SELECTOR] to select Bluetooth® mode.**

**2 Connect the device.**

**3 Press [▶/II] to start playback.**

Pause playback	Press [▶/II]. Press again to continue playback.
Skip track	Press [◀◀] or [▶▶].

### Link mode

You can select different modes to suit the type of connection.

**1 Stop or disable the Bluetooth® transmission of the device.**

**2 Press [0, LINK MODE].**  
MODE 1 ↔ MODE 2  
(default)

MODE 1: The light blue status indicator blinks 4 times.  
For stable communication.

MODE 2: The light blue status indicator blinks 2 times.  
For good audio quality.  
Communication can disconnect easily. Select "MODE 1" if this occurs.

### About Bluetooth®

#### Frequency band

- This system uses the 2.4 GHz frequency band.

#### Certification

- This system conforms to frequency restrictions and has received certification based on frequency laws. Thus, a wireless permit is not necessary.
- The actions below are punishable by law:
  - Taking apart or modifying the main unit.
  - Removing specification indications from the bottom of this main unit.

#### Restrictions of use

- Wireless transmission and/or usage with all Bluetooth® equipped devices is not guaranteed.
- All devices must conform to standards set by Bluetooth SIG, Inc.
- Depending on the specifications and settings of a device, it can fail to connect or some operations can be different.
- This system supports Bluetooth® security features. But depending on the operating environment and/or settings, this security is possibly not sufficient. Transmit data wirelessly to this system with caution.
- This system cannot transmit data to a Bluetooth® device.

#### Range of use

- Use this device at a maximum range of 10 m (33 ft).
- The range can decrease depending on the environment, obstacles or interference.

#### Interference from other devices

- Other devices can use the same frequency as this system and cause the system to operate incorrectly or sound distortion.
- To prevent interference from other devices:
  - Keep the system away from other devices that emit radio frequency interference.
  - Do not use this system and a wireless LAN device at the same time. Switch off any wireless LAN device.

#### Intended usage

- This system is for normal, general use only.
- Do not use this system near an equipment or in an environment that is sensitive to radio frequency interference (example: airports, hospitals, laboratories, etc.).

### Bluetooth®

#### Pairing cannot be done

- The device is out of the 10 m (33 ft) communication range.
- Move the device nearer to the system.

#### The device cannot be connected

- The pairing of the device was unsuccessful. Read the instructions and try again.
- The pairing of the device has been replaced. Do pairing again.
- Make sure that the system is not connected to a different device.

#### The device is connected but audio cannot be heard through the system.

- For some built-in Bluetooth® devices, you have to set the audio output to "SC-HC05" manually. Read the operating instructions of the device for details.

#### Sound from the device is broken

- The device is out of the 10 m (33 ft) communication range. Move the device nearer to the system.
- Remove any obstacle between the system and the device.
- Switch off any wireless LAN device.
- Select "MODE 1" for stable communication.

### Memory reset (Initialization)

When the following situations occur, refer to the instructions below to reset the memory:

- There is no response when buttons are pressed.
- You want to clear and reset the memory contents.

#### To reset the memory

**1 Disconnect the AC power supply cord.**

**2 While you press and hold [0/i, POWER] on the main unit, connect the AC power supply cord again. Wait until the power indicator lights up.**

**3 Release [0/i, POWER].**

All the settings are set back to the factory preset. The system is in standby mode. Switch on the system to set the memory items again.

## Using the auxiliary input

You can connect a portable audio equipment and listen to the audio through this system.

### Preparación

Switch off the equalizer (if any) of the portable audio equipment to prevent sound distortion. Decrease the volume of the system and the portable audio equipment before you connect or disconnect the portable audio equipment.

**1 Connect the portable audio equipment.**

Plug type: Ø 3.5 mm (1/8") stereo

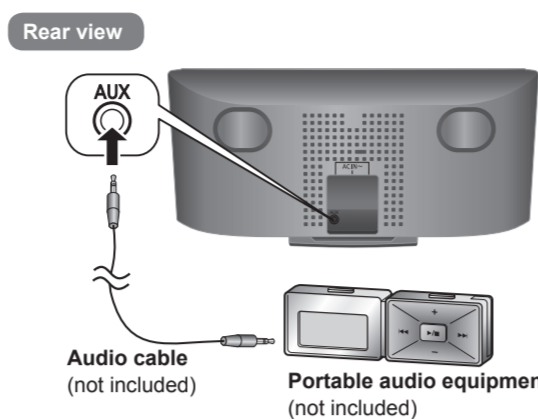
**2 Press [SELECTOR] to select AUX mode.**

Status indicator: off

**3 Play the portable audio equipment.**

### Note:

- Read the operating instructions of the portable audio equipment for details.
- Components and cables are sold separately.



#### To adjust the audio input level

Press [0, LINK MODE/-PAIRING].  
NORMAL ↔ HIGH  
(default)

### Note:

- Select "NORMAL" if the sound is distorted during "HIGH" input level.

## Limited Warranty

Panasonic Consumer Electronics Company,  
Division of Panasonic Corporation of North America  
One Panasonic Way, Secaucus, New Jersey 07094

## Panasonic Home Audio Products Limited Warranty

### Limited Warranty Coverage (For USA and Puerto Rico Only)

If your product does not work properly because of a defect in materials or workmanship, Panasonic Consumer Electronics Company (referred to as "the warrantor") will, for the length of the period indicated on the chart below, which starts with the date of original purchase ("warranty period"), at its option either (a) repair your product with new or refurbished parts, (b) replace it with a new or a refurbished equivalent value product, or (c) refund your purchase price. The decision to repair, replace or refund will be made by the warrantor.

Product or Part Name	Parts	Labor
Audio Products (except items below)	1 year	1 year
DVD Home Theater System	1 year	1 year
Home Theater Audio System	1 year	1 year
USB Reader-writer, PC Card Adapters (defective exchange)	1 year	Not Applicable
Accessories: Headphones, cartridges, Microphones, Adapters	90 days	90 days
Rechargeable Batteries, DVD-RAM Disc (defective exchange)	10 days	Not Applicable
SD Memory Cards, Rechargeable Battery Packs (defective exchange)	90 days	Not Applicable

During the "Labor" warranty period there will be no charge for labor. During the "Parts" warranty period, there will be no charge for parts. This Limited Warranty excludes both parts and labor for non-rechargeable batteries, antennas, and cosmetic parts (cabinet). This warranty only applies to products purchased and serviced in the United States or Puerto Rico. This warranty is extended only to the original purchaser of a new product which was not sold "as is".

### Carry-In or Mail-In Service

To find a service center please visit <http://www.panasonic.com/help> or call 1-800-211-PANA (7262).

When shipping the unit, carefully pack, include all accessories, and send it prepaid, adequately insured and preferably in the original carton. When shipping Lithium Ion batteries please visit our Web Site at [www.panasonic.com/BatteryHandling](http://www.panasonic.com/BatteryHandling) as Panasonic is committed to providing the most up to date information. Include a letter detailing the complaint, a return address and provide a daytime phone number where you can be reached. A valid registered receipt is required under the Limited Warranty.

**IF REPAIR IS NEEDED DURING THE WARRANTY PERIOD, THE PURCHASER WILL BE REQUIRED TO FURNISH A SALES RECEIPT/PROOF OF PURCHASE INDICATING DATE OF PURCHASE, AMOUNT PAID AND PLACE OF PURCHASE. CUSTOMER WILL BE CHARGED FOR THE REPAIR OF ANY UNIT RECEIVED WITHOUT SUCH PROOF OF PURCHASE.**

### Limited Warranty Limits And Exclusions

This warranty ONLY COVERS failures due to defects in materials or workmanship, and DOES NOT COVER normal wear and tear or cosmetic damage. The warranty ALSO DOES NOT COVER damages which occurred in shipment, or failures which are caused by products not supplied by the warrantor, or failures which result from accidents, misuse, abuse, neglect, mishandling, misapplication, alteration, faulty installation, set-up adjustments, misadjustment of consumer controls, improper maintenance, power line surge, lightning damage, modification, introduction of sand, humidity or liquids, commercial use such as hotel, office, restaurant, or other business or rental use of the product, or service by anyone other than a Factory Service Center or other Authorized Service, or damage that is attributable to acts of God.

**THERE ARE NO EXPRESS WARRANTIES EXCEPT AS LISTED UNDER "LIMITED WARRANTY COVERAGE". THE WARRANTOR IS NOT LIABLE FOR INCIDENTAL OR CONSEQUENTIAL DAMAGES RESULTING FROM THE USE OF THIS PRODUCT, OR ARISING OUT OF ANY BREACH OF THIS WARRANTY.** (As examples, this excludes damages for lost time, travel to and from the service, loss of or damage to media or images, data or other memory or recorded content. The items listed are not exclusive, but for illustration only.)

**ALL EXPRESS AND IMPLIED WARRANTIES, INCLUDING THE WARRANTY OF MERCHANTABILITY, ARE LIMITED TO THE PERIOD OF THE LIMITED WARRANTY.**

Some states do not allow the exclusion or limitation of incidental or consequential damages, or limitations on how long an implied warranty lasts, so the exclusions may not apply to you.

This warranty gives you specific legal rights and you may also have other rights which vary from state to state. If a problem with this product develops during or after the warranty period, you may contact your dealer or Service Center. If the problem is not handled to your satisfaction, then write to the warrantor's Consumer Affairs Department at the addresses listed for the warrantor.

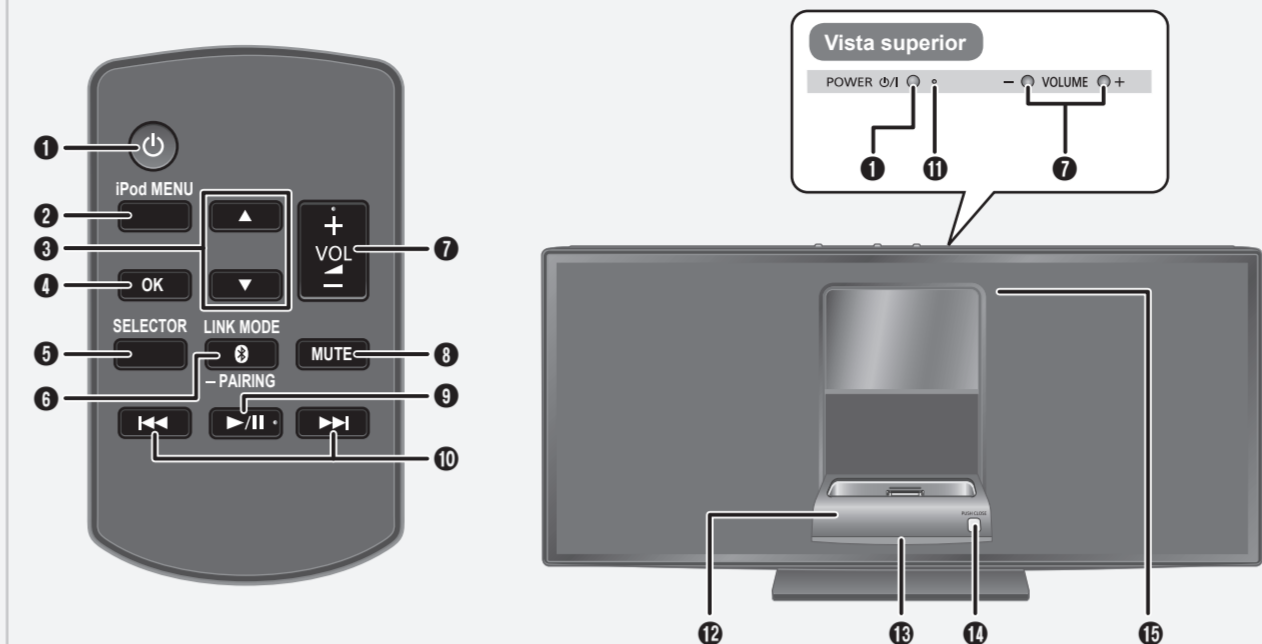
**PARTS AND SERVICE, WHICH ARE NOT COVERED BY THIS LIMITED WARRANTY, ARE YOUR RESPONSIBILITY.**

Customer Services Directory (United States and Puerto Rico)
Obtain Product Information and Operating Assistance; locate your nearest Dealer or Service Center; purchase Parts and Accessories; or make Customer Service and Literature requests by visiting our Web Site at: <a href="http://www.panasonic.com/help">http://www.panasonic.com/help</a> or contact us via the web at: <a href="http://www.panasonic.com/contactinfo">http://www.panasonic.com/contactinfo</a> You may also contact us directly at: 1-800-211-PANA (7262) Monday-Friday 9am-9pm, Saturday-Sunday 10am-7pm EST
For hearing or speech impaired TTY users, TTY: 1-877-833-8855
Accessory Purchases (United States and Puerto Rico)
Purchase Parts, Accessories and Instruction Books online for all Panasonic Products by visiting our Web Site at: <a href="http://www.pstc.panasonic.com">http://www.pstc.panasonic.com</a> Or, send your request by E-mail to: <a href="mailto:ncparts@us.panasonic.com">ncparts@us.panasonic.com</a> You may also contact us directly at: 1-800-332-5368 (Phone) 1-800-237-9080 (Fax Only) (Monday-Friday 9am-9pm EST) Panasonic Service and Technology Company 20421 84th Avenue South, Kent, WA 98032 (We accept Visa, MasterCard, Discover Card, American Express, and Personal Checks)
For hearing or speech impaired TTY users, TTY: 1-866-605-1277

As of December 2010

## ESPAÑOL

## Panorama de los controles



**1 Interruptor de alimentación en espera/conectada [0].**

[0] (o) POWER  
Pulse este interruptor para cambiar del modo de alimentación conectada al modo de alimentación en espera o viceversa.  
En el modo de alimentación en espera, la unidad consume una pequeña cantidad de corriente.

**2** Vea el menú del iPod o iPhone

**3** Seleccione un elemento

**4** Confirmar selección  
Configure o cancele la función de apagado automático

**5** Seleccione el modo iPod, radio de Internet, Bluetooth® o AUX

**6** Inicie el modo de pareo por Bluetooth®

Elija el modo de vínculo por Bluetooth®  
Ajuste el nivel de entrada de audio en el modo AUX

**7** Ajuste el volumen del sistema.

**8** Desactive el sonido del sistema

En modo iPod o AUX: El indicador de estado azul claro

parpadea continuamente.  
The blue and light blue status indicators blink alternately.

Pulse el botón nuevamente para cancelar.  
La silencia también se cancela cuando usted ajusta el volumen o cuando apaga el sistema.

**9** Inicie o pause la reproducción

**10** Saltar o busque pista

**11** Indicador de encendido

Encendido: El sistema está encendido

Apagado: El sistema está en modo de espera

**12** Estación de acoplamiento de iPod o iPhone

**13** Indicador de estado:

Verde: El modo iPod

Azul: El modo Bluetooth®

Azul claro: Configure o cancele la función de apagado automático

Apagado: El modo AUX

El indicador de estado verde parpadea cada vez que se pulsa un botón del control remoto.

**14** [PUSH CLOSE]  
Pulse mientras cierra la estación de acoplamiento.

**15** Sensor del control remoto

Apunte el control remoto al sensor del control remoto, lejos de obstáculos, dentro de un rango máximo de 7 m (23 pies) directamente al frente de la unidad principal.

## Código del control remoto

Cuando otro equipo Panasonic responda al control remoto de este sistema, cambie el código del control remoto de este sistema.

### Para configurar el código en "2"

Pulse y mantenga pulsado [MUTE] y pulse [▲] durante al menos 4 segundos.  
El indicador de estado verde parpadea 10 veces.

### Para configurar el código en "1"

Pulse y mantenga pulsado [MUTE] y pulse [▼] durante al menos 4 segundos.  
El indicador de estado verde parpadea 10 veces.

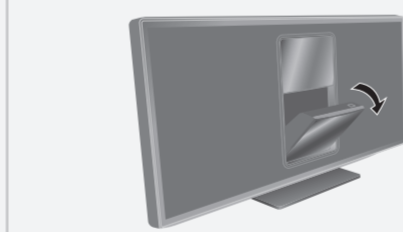
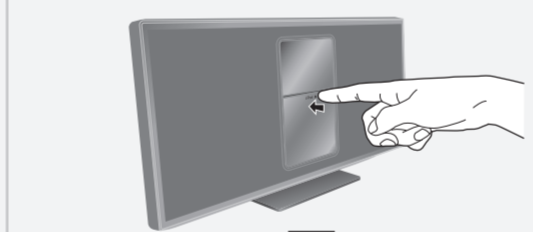
## Cómo usar un iPod o iPhone

### Reproducción básica

#### Preparación

Asegúrese de quitar el iPod o el iPhone de su funda.

**1 Pulse [▲, iPod] para abrir la estación de acoplamiento.**



**2 Introduzca un adaptador para base de acoplamiento compatible**

**3 Conectar el iPod o iPhone.**

El indicador de estado cambia a verde.



Sujete la estación de acoplamiento al conector o desconectar el iPod o el iPhone.

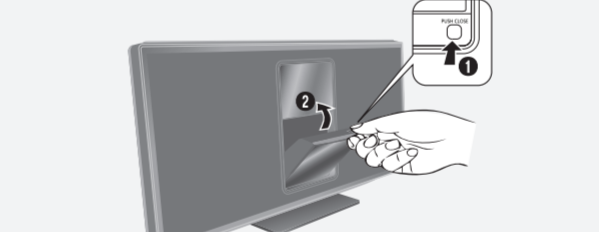
**4 Pulse [▶/II] para iniciar la reproducción.**

Pause la reproducción	Pulse [▶/II].
Saltar pista	Pulse [◀◀] o [▶▶].
Busque pista	Pulse y mantenga pulsado [◀◀] o [▶▶].
Vea el menú del iPod o iPhone	Pulse [iPod MENU].
Seleccione un elemento	Pulse [▲] o [▼] y después pulse [OK].

### Para cerrar la estación de acoplamiento

**1 Desconectar el iPod o iPhone.**

**2 Pulse [PUSH CLOSE] mientras cierra la estación de acoplamiento.**



### Note:

- Asegúrese de alinear su iPod o iPhone con el conector cuando realice la inserción.
- Asegúrese de pulsar [PUSH CLOSE] mientras cierra la estación de acoplamiento para evitar daños.
- Dependiendo del modelo, podría requerirse quitar el iPod o el iPhone y elegir el álbum, artista, etc. en el iPod o en el iPhone.
- El funcionamiento podría variar dependiendo de los modelos de iPod o iPhone.
- Lea la Manual del Usuario del iPod o iPhone para ver las instrucciones de funcionamiento.

### Cómo cargar un iPod o iPhone

El iPod o iPhone se carga automáticamente cuando está conectado al sistema (incluso cuando el sistema está en modo de alimentación en espera).

- Consulte la pantalla del iPod o iPhone para verificar el estado de carga de su batería.
- Desconecte el iPod o iPhone si no se utiliza durante un periodo de tiempo largo después que se hubiera completado la carga.
- La carga se detiene cuando la batería está completamente cargada. La batería se agotará de forma natural.

## Escuchar la radio de Internet

Puede escuchar una estación de radio en Internet si instala la aplicación "iTuner for Panasonic" en su iPod touch o iPhone. Descargue esta aplicación de App Store.

### Note:

Para obtener modelos compatibles para iPod touch e iPhone e instrucciones sobre cómo utilizar la aplicación "iTuner for Panasonic", refiérase a: <http://radio.vtuner.com/panasonic/en>

### Preparación

Instale "iTuner for Panasonic" en su iPod touch o iPhone. Conecte su iPod touch o iPhone al Internet. Vaya a la Pantalla de inicio en su iPod touch o iPhone.

**1 Conectar el iPod touch o iPhone.**

**2 Pulse [SELECTOR] para iniciar la aplicación.**

## Uso de Bluetooth®

Puede conectar y reproducir un dispositivo de audio de manera inalámbrica a través de Bluetooth®.

**Panasonic no se responsabiliza por datos y/o información que podrían correr algún riesgo durante la transmisión inalámbrica.**

### Preparación

Encienda la opción de Bluetooth® en el dispositivo y ponga el dispositivo cerca del sistema. Lea las instrucciones de operación del dispositivo para obtener más detalles.

El indicador de estado azul puede indicar distintas condiciones del Bluetooth®:

Parpadea rápidamente	El sistema está listo para el pareo.
Parpadea lentamente	El sistema está esperando conexión.
Encendido	Un dispositivo Bluetooth® está conectado.

### Pareo y conexión de un dispositivo

**1 Pulse [SELECTOR] para seleccionar el modo Bluetooth®.**

Indicador de estado: azul

**2 Acceda al menú Bluetooth® del dispositivo y busque "SC-HC05".**

**3 Paree o conecte el dispositivo a "SC-HC05".**

Si le pide clave de acceso, ingrese "0000".  
El dispositivo se conecta con el sistema automáticamente, después que se hubiera completado el pareo.

### Note:

- Para conectarse, un dispositivo debe estar pareado.
- El sistema sólo puede conectarse a un dispositivo a la vez.
- El dispositivo permanece conectado incluso si el sistema se cambia a modo iPod o AUX.

### Pareo con dispositivos adicionales

**1 Pulse [SELECTOR] para seleccionar el modo Bluetooth®.**

**2 Pulse y mantenga pulsado [0, -PAIRING].**

**3 Acceda al menú Bluetooth® del dispositivo y busque "SC-HC05".**

**4 Paree o conecte el dispositivo a "SC-HC05".**

Puede parear hasta 6 dispositivos con este sistema. Si se para un 7mo dispositivo, el dispositivo con el historial de conexión más antiguo será reemplazado.

Debe realizar el pareo una sola vez, salvo que:

- El pareo del dispositivo se hubiera reemplazado.
- La memoria del sistema se hubiera restablecido.
- El pareo de "SC-HC05" se hubiera borrado del dispositivo.

## Cómo usar la función de apagado automático

Cuando está en modo AUX o iPod, el sistema se apaga automáticamente si no lo utiliza durante aproximadamente 30 minutos.

**1 Pulse [SELECTOR] para seleccionar el modo AUX.**

Indicador de estado: apagado

**2 Pulse y mantenga pulsado [OK].**

ENCENDIDO ↔ APAGADO  
(predeterminado)

ENCENDIDO: El indicador de estado azul claro

parpadea 2 veces.

APAGADO: El indicador de estado azul claro