

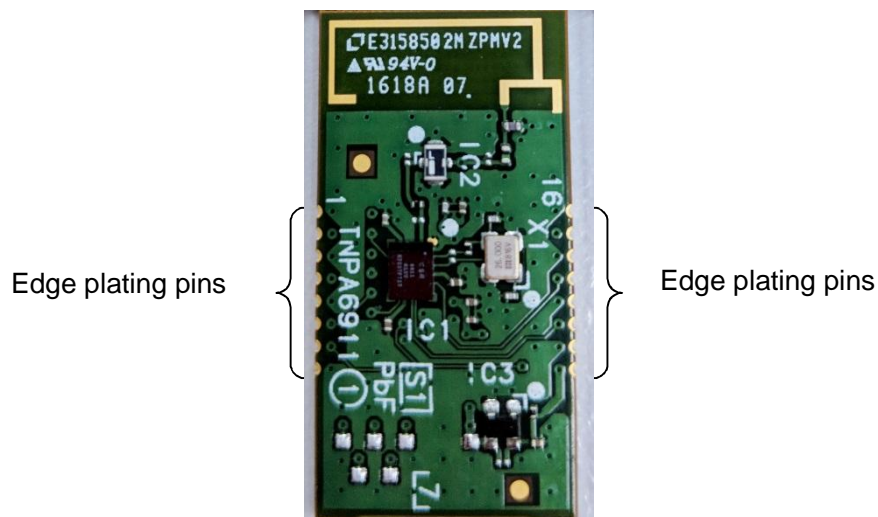
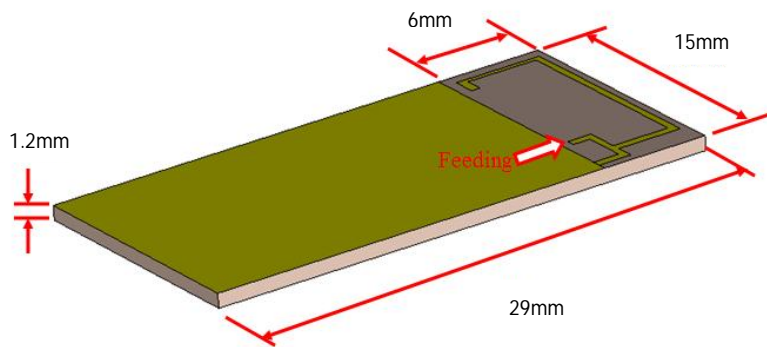
# Model Name: RSNE041B1

## Product Description: Bluetooth Module

### Installation Manual

Module Size : 15 x 29mm  
Thickness : 1.2mm  
Connectivity : Edge-plating Surface Mount  
Number of pin : 16  
Caution notes :

1. The space around antenna area (6x15mm) needs to be a free space. No PCB or any other material below the antenna.
2. Avoid module placement near to any metal part.



FCC ID: ACJ-B42R1801

IC: 216A-B42R1801

This device complies with part 15 of the FCC Rules. Operation is subject to the following two conditions:

- (1) This device may not cause harmful interference, and
- (2) this device must accept any interference received, including interference that may cause undesired operation.

Caution: Any changes or modifications not expressly approved by the party responsible for compliance to this equipment would void the user's authority to operate this device.

This Device complies with FCC & IC radiation exposure limits.

This device contains licence-exempt transmitter(s)/receiver(s) that comply with Innovation, Science and Economic Development Canada's licence-exempt RSS(s). Operation is subject to the following two conditions:

1. This device may not cause interference.
2. This device must accept any interference, including interference that may cause undesired operation of the device.

L'émetteur/récepteur exempt de licence contenu dans le présent appareil est conforme aux CNR d'Innovation, Sciences et Développement économique Canada applicables aux appareils radio exempts de licence. L'exploitation est autorisée aux deux conditions suivantes :

1. L'appareil ne doit pas produire de brouillage;
2. L'appareil doit accepter tout brouillage radioélectrique subi, même si le brouillage est susceptible d'en compromettre le fonctionnement.