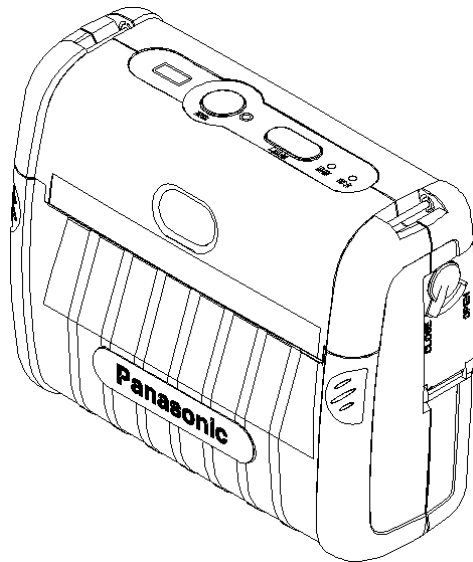


Operating Instructions Printer

Model No. JT-H340PR Series



Contents

Read Me First	2
1. Getting Started	3
Precautions	3
Name of each part & function	7
2. Operation	8
Battery Installation	8
Paper Installation	9
AC cable Set Up	10
Charging Battery	11
3. Appendix	12
Troubleshooting	12
How to care	13
How to attach the Option parts	13
Specifications	14
Warranty Policy	17
Compliance Notice	17
For USA	18
For CANADA	19

Before operating this product, please read these instructions carefully and save this document for future use.

Read Me First

Introduction

Thank you for purchasing the JT-H300PR series Panasonic Printer.

This manual describes the instructions for the printer.

Please read this manual carefully before using this product.

This Printer is equipped with “Bluetooth” wireless communication. [Class1 Device]



What's in the Box?

1. Printer (Battery is not included.)
2. Safety Precautions

Options

1. Battery Pack : JT-H340BT-E1 / -E2
2. Battery Charger : JT-H100CG-55
3. AC Adaptor : JT-H300AD-P1
4. Belt Hook : JT-H340BH-P1
5. Wearable Case : JT-H340CA-P1
6. USB Cable : JT-H300CC-P1
7. AC Cord : JT-H300AC-U0 (North America version)

Other Equipment

1. Thermal Paper (Please ask our sales rep about the recommended Paper.)

1. Getting Started

Precautions



[Printer: JT-H340PR]

1. Avoid Radio Frequency Interference

Do not place the printer near a television or radio receiver.

2. Avoid Stacking

Do not place heavy objects on the printer.

3. Keep Small Objects Away

Do not insert paper clips or other small objects into the printer.

Failure to observe this may cause heat or fire.

4. Keep Dry

Failure to observe this may cause heat or fire.

5. Do Not Disassemble the Printer

Do not attempt to disassemble the printer. Failure to observe this may cause heat or fire.

6. Do Not Touch

Keep your hands away from the paper cutter and the thermal head.

Failure to observe this may cause injury.

7. Do Not Use With Any Other Battery

The printer is designed for the specified JT-H340BT battery.

Using unspecified battery may cause smoke or fire.

<p>CAUTION Risk of explosion if battery is replaced by an incorrect type. Dispose of used batteries according to the instructions and/or local requirements.</p>

8. Use only the specified AC adaptor and AC cord

Using unspecified AC adaptor or AC cord may cause smoke or fire.

9. Do Not Use In Aircrafts or Hospitals

This printer includes “Bluetooth” wireless communication.

Turn off the power switch in aircrafts or hospitals. Abnormal use may occur if used in close proximity to electric instruments or electro-medical apparatus.

10. Do Not Hold this product for too long when the power on

Failure to observe this may cause a serious low-temperature burn.

<NOTE>

Do not open the cover while the printer is operating.

Keep the thermal paper away from the direct exposure to light, high temperature, dust and humidity.

Precautions



[Battery Pack: JT-H340BT]

1. Avoid Heat

Do not throw the battery pack into a fire, heat above 140°F (60°C) or incinerate. Failure to observe this may cause fire or explosion.

2. Keep Articles Away

Do not place the battery pack together with articles such as necklaces or hairpins when carrying or storing. Failure to observe this may cause heat, fire or explosion.

3. Keep Dry

Failure to observe this may cause heat, fire or explosion.

4. Do Not Disassemble and Crush

Do not insert sharp object into the battery pack. Do not deform, disassemble, crush, or modify the printer. Failure to observe this may cause heat, fire or explosion.

5. Do Not Short

Do not short the positive (+) and negative (-) contact. Failure to observe this may cause heat, fire or explosion.

6. Avoid Extreme Heat, Cold, and Direct Sunlight

Do not charge, use or leave the battery pack for extended periods where it will be exposed to direct sunlight or in a hot, or cold environment.

7. Do Not Put Into a Microwave Oven

Do not put the battery pack into a microwave oven or pressurized chamber. Failure to observe this may cause explosion.

8. Do Not Use With Any Other Device

The battery pack is designed for the specified JT-H300PR / JT-H340PR printer and JT-H100CG-55 charger. Do not use the battery with any other device.

CAUTION Risk of explosion if battery is replaced by an incorrect type.
Dispose of used batteries according to the instructions and/or local requirements.

9. Stop Using

Should the battery emit an abnormal odor, become hot to the touch, become discolored, change shape, or become in any way different, remove it from the printer and stop using it.

<NOTE>

Please charge the battery pack for at least 100minutes before first use.

Please ask our sales rep about the dispose method of the battery.

If the battery pack is not going to be used for a long period, please charge or discharge it until the remaining battery capacity becomes 30% to 40% and store it in a cool, dry place.

Precautions



[Li-ion Battery Charger: JT-H100CG-55]

1. Keep Small Object Away

Do not insert paper clips or other small object into charger. Failure to observe this may cause fire or electric shock.

2. Do Not Disassemble the Charger

Do not attempt to disassemble the charger. Failure to observe this may cause fire.

3. Keep Dry

Failure to observe this may cause heat or fire.

4. Do Not Short

Do not short the positive (+) and negative (-) contact.

Failure to observe this may cause heat or fire.

5. Do Not Use With Any Other Battery

The charger is designed for the specified JT-H340BT battery. Do not use the charger with any other battery.

CAUTION Risk of explosion if battery is replaced by an incorrect type. Dispose of used batteries according to the instructions and/or local requirements.

6. Do Not Touch the Plug with Wet Hands

Failure to observe this may cause electric shock.

7. Do Not Touch the Charger During a Lightning

Failure to observe this may cause electric shock.

8. Be Certain to Plug Fully Into the Outlet

Failure to observe this may cause electric shock or fire.

9. When Unplugging, Make Sure to Hold the Body of the Plug

Using damaged power strip may cause electric shock, short circuit or fire.

10. Do Not Use a Damaged Power-code or Plug

Failure to observe this may cause electric shock or fire.

11. Clean the Dust off the Plug, Periodically

Failure to observe this may cause electric shock or fire.

12. Do Not Hold this product for too long when the power on

Failure to observe this may cause a serious low-temperature burn.

13. Do Not Use this product Outdoors.

Failure to observe this may cause electric shock or fire.

<NOTE>

To prolong the life of the battery, please remove it from the charger within 24 hours when charging is complete.

Please charge the battery at temperature between 5 to 40 degrees centigrade.

Precautions



[AC Adaptor: JT-H300AD-P1]

1. Do Not Disassemble

Do not attempt to disassemble the charger.

Failure to observe this may cause electric shock or fire.

2. Keep Dry

Failure to observe this may cause heat or fire.

3. Do Not Use With Any Other Device

The AC Adaptor is designed for the specified JT-H300PR / JT-H340PR printer. Do not use the AC adaptor with any other device.

4. Do Not Exceed the Ratings of AC Outlet and Wirings, and Connect the AC Adaptor Only within 100-240 V AC.

Exceeding the ratings may result in overheating or fire.

5. Do Not Touch the Plug with Wet Hands

Failure to observe this may cause electric shock.

6. Be Certain to Plug Fully Into the Outlet

Failure to observe this may cause electric shock or fire.

7. When Unplugging, Make Sure to Hold the Body of the Plug

Using damaged power strip may cause electric shock, short circuit or fire.

8. Do Not Use a Damaged Power-code or Plug

Failure to observe this may cause electric shock or fire.

9. Clean the Dust off the Plug, Periodically

Failure to observe this may cause electric shock or fire.

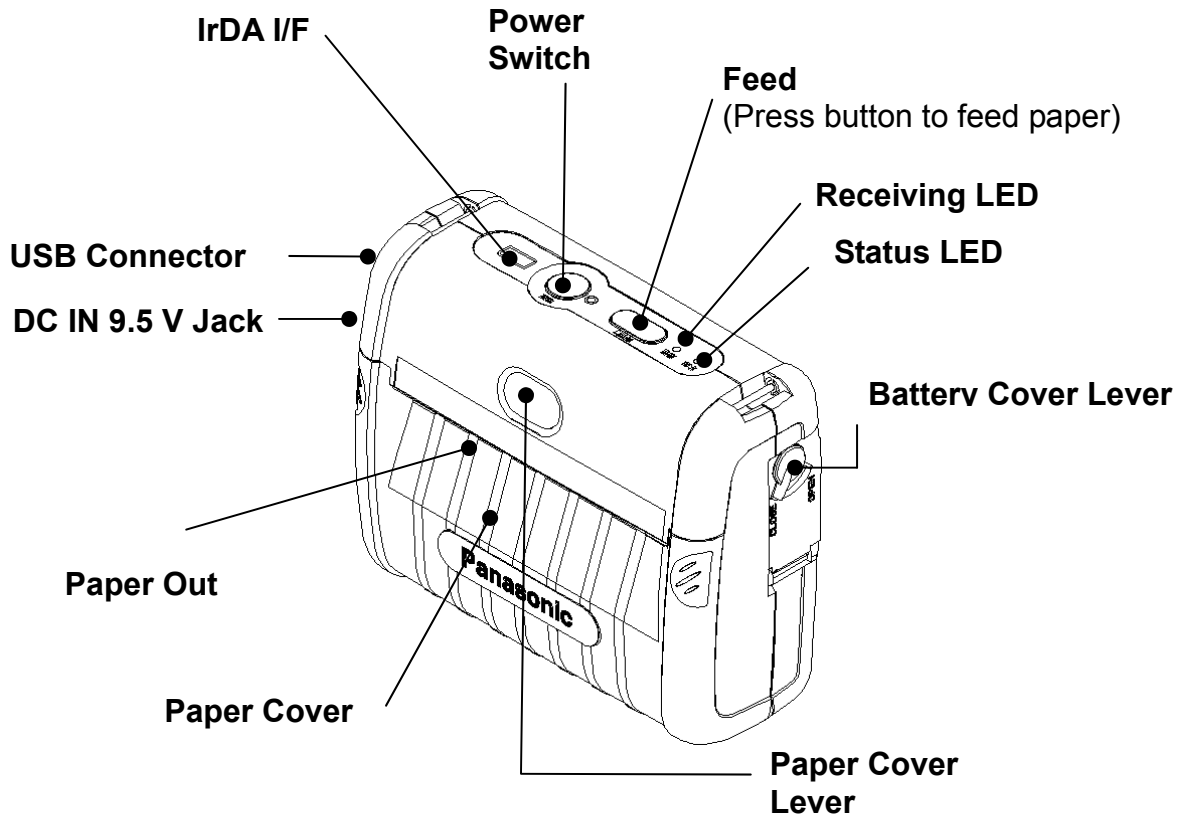
10. Do Not hold this product for too long when the power on

Failure to observe this may cause a serious low-temperature burn.

11. Do Not Use this product Outdoors.

Failure to observe this may cause electric shock or fire.

Name of each part & function



LED	Indicate	Status
Status LED	Off	Normal status.
	Green Light	1. Power-on (5 seconds lightning), 2. Power-off (0.5 second lightning) 3. Battery Full Charge(at AC Adaptor connection)
	Orange Light	Detect battery capacity low; printable.
	Red Light	Battry Charging(at AC Adaptor connection)
	Red Blink (Fast)	1. The cover of paper is open. 2. The paper is empty. 3. Others, the printer is out of order.
	Red Blink (Slow)	1. Detect Low voltage; not printable. 2. Battry Charging Error or Preliminary charging (at AC Adaptor connection)
Receiving LED	Green Light	1. Printing 2. Power-off(0.5 second lighting)
	Green Blink	In communications.

2. Operation

Battery Installation

<Open the Battery Cover>

- 1) Turn Off Power Switch
- 2) Slide Battery Cover Lever
- 3) Pull the Battery Cover up
- 4) Open the Battery Cover
- 5) Slide and insert the Battery completely to the printer.

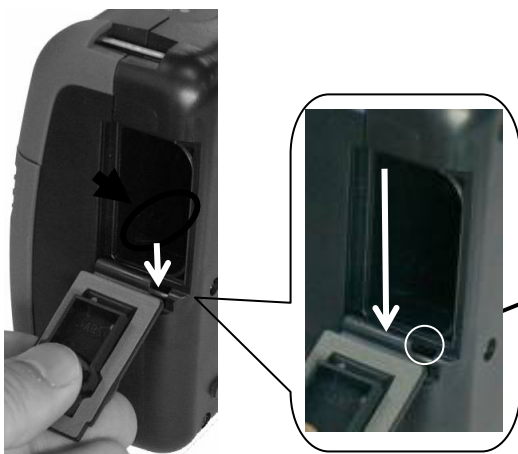


<Close the Battery Cover>

- 1) Close the Battery Cover
- 2) Push down the Battery Cover.
- 3) Slide the Battery Cover Lever.



<NOTE>



If the Battery cover comes off, fit it as indicated.
Slide the hinge of the Battery Cover into the metal bar
and hook to it.

Paper Installation

- 1) Push the Paper Cover Lever
- 2) Open the Paper Cover



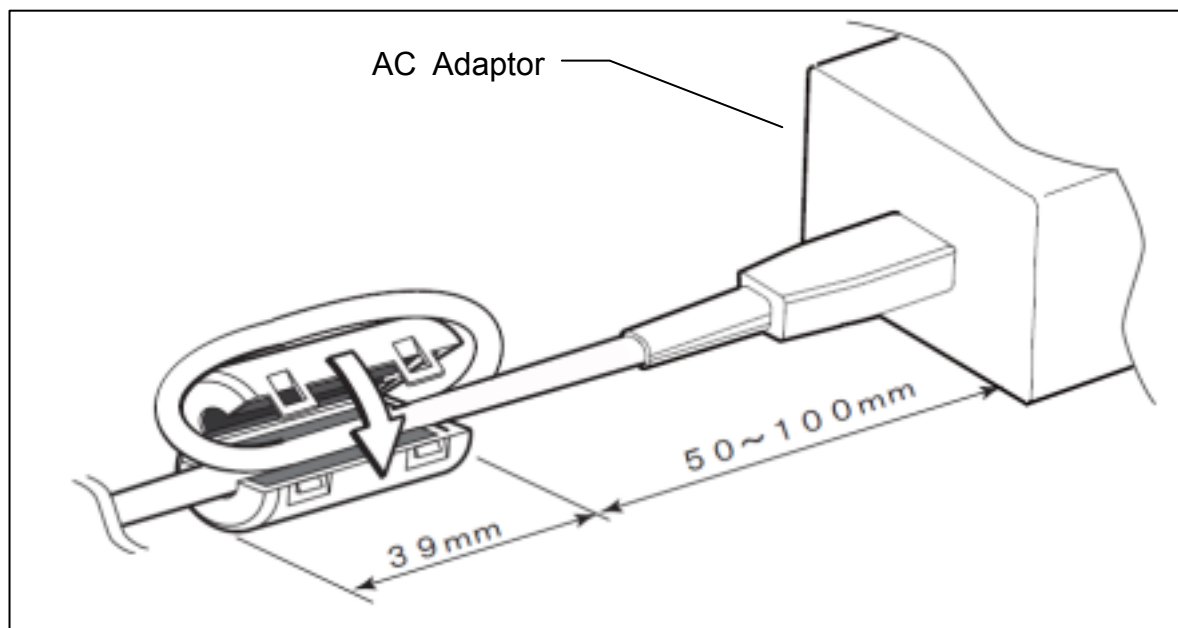
- 3) Install Paper (Paper must be tightly rolled and be confirmed that dust/sand is not on.)
- 4) Close the Paper Cover (Make sure that the Cover is closed completely.)



AC cable Set Up

Please attach the core to the AC cable, before using the AC adaptor.

The core is included in the AC adaptor (JT-H300AD-P1).



How to connect USB cable

- 1) Pull the Connector Cover.
- 2) Connect the plug of USB cable (JT-H300CC-P1), to the USB connector of the printer.



<Note>

The USB cable must use the special one (JT-H300CC-P1).

Charging Battery

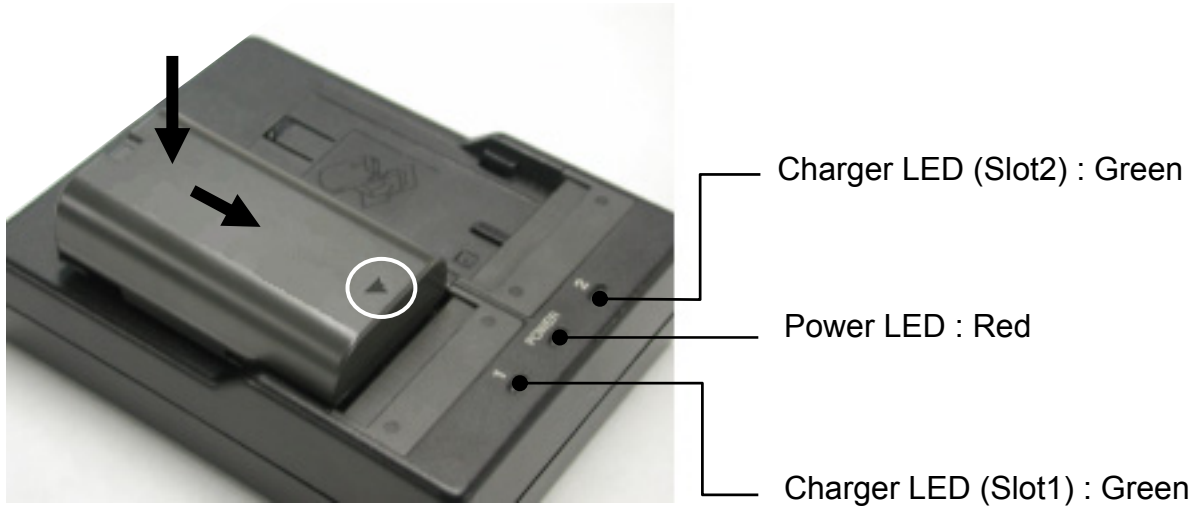
[By Battery Charger]

- 1) Put the Battery on the Charger slot and slide to Δ direction.
- 2) When charging, Charger LED blinks green. When charging is completed, Charger LED constantly lights green. Charging function is limited to one Battery at any moment even if two Batteries are set to the Charger.

When charging is completed in one slot, the charging of another slot starts automatically.

* Charging Time: approx. 2H per Battery

- 3) Remove the Battery from the Charger after Charging.



[By AC Adaptor]

- 1) Pull the Connector Cover.
- 2) Connect the plug of AC adaptor, to the DC jack of the printer.



<Note>

Don't open the battery cover, when charging.

AC adapter is for the exclusive use of battery charging.

The printer does not work when AC adapter is connected.

3. Appendix

Troubleshooting

Symptom	Possible Cause	Solution
No Power in Printer	<ol style="list-style-type: none"> 1. Has the battery fully inserted? 2. Is the Power Switch on? 	<ol style="list-style-type: none"> 1. Insert the battery fully. 2. Move the Power Switch on.
Nothing is printed	<ol style="list-style-type: none"> 1. Is the power turned on? 2. Is the paper set correctly? 3. Is the LED blinking red slowly? 4. Is the LED blinking red fast? 5. Are you using Bluetooth? 6. Are you using IrDA? 	<ol style="list-style-type: none"> 1. Turn on power. 2. Check the print paper setting. 3. Charge the battery. 4. Make sure that the paper is setting properly, or close the paper cover completely. 5. Reduce the distance of the device and the printer. 6. Adjust the angle of IrDA, or clean up the window, or avoid direct sunlight.
The print is faint	<ol style="list-style-type: none"> 1. Isn't the thermal head dirty? 2. Are you using the recommended paper? 	<ol style="list-style-type: none"> 1. Clean it up. 2. Check the paper.
The orange or red LED is lighting even after charging battery.	The life cycle of the battery pack may have expired.	Replace the battery pack with a new one.

How to care

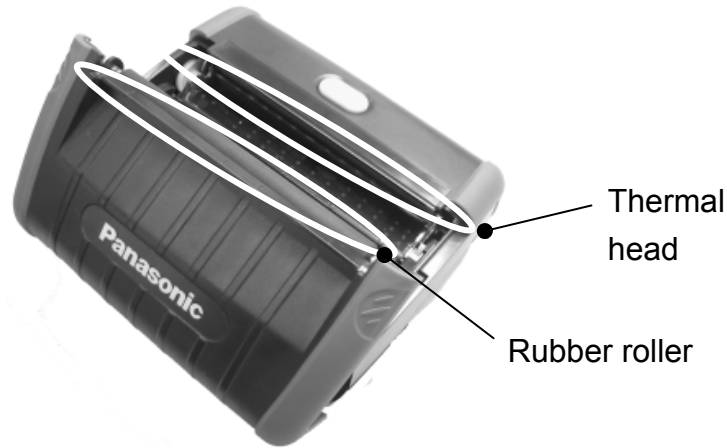
<How to clean up the thermal head and the rubber roller. >

Push the paper cover lever to open the paper cover.

Wipe off any dust/dirt using the cotton swab with a small amount of alcohol (ethanol).

(Do not use thinner, benzene series or kerosene series.)

Close the cover after alcohol volatilizes.



How to attach the Option parts

<How to attach the Belt hook. >

- 1) Please put the belt hook on the back of the printer confirming the attaching direction.
- 2) Please attach the belt hook to the printer with two screws of the attachment so as not to loosen.

<NOTE>

Do not pull the belt hook strongly.

Failure to observe this may cause breaking and dropping the printer.

Do not use any other screws except the specified screws of the attachment.

Specifications

[Printer:JT-H340PR-E1 / -E8]

Items	Description	Specifications
Mechanical	Printing	Line Thermal
	Printing Speed	Max. 70 mm/Sec (Panasonic Test Standard, receipt paper)
Head	Printing Width	104 mm (832 dots/ line) [JT-H340PR-E1] 70 mm (560 dots/ line) [JT-H340PR-E8] *1
Printing Function	Font Size	12 x 24 dots (standard character), 8 x 16 dots
	Font Type	Alpha-numeric, Barcode, 2D code
Life Time	Head	1 X 10 ⁸ pulse or more
		25 Km or more (Recommended label paper)
		50 Km or more (Recommended receipt paper)
Paper	Paper width	114 mm ^{+0.5 -0.5mm} [JT-H340PR-E1] 80 mm ^{+0.5 -0.5mm} [JT-H340PR-E1]
	Roll direction	Inside (outside surface; thermal, receipt paper) Outside (outside surface; thermal, label paper)
Communication *2	Bluetooth	Bluetooth V2.1+EDR (Class 2) 2.4 GHz *3
	IrDA	IrDA V1.2 (Raw Ir, Proprietary)
	USB	USB V2.0 Full Speed Max. 12 Mbps
Charging Function	Chaging time	Approx. 4 hours
	Charging temperature	10 to 35 degree centigrade
Power supply	Battery	Battery Pack : JT-H340BT-E1 / -E2
	AC Adaptor	DC 9.5 V AC Adaptor : JT-H300AD-P1 (for charging)
Size & Mass	Size	Approx. W 125 mm x L 154 mm x D 60 mm
	Mass	Approx. 570 g (without paper)
Environment	Operation temperature	-5 to 45 degree centigrade (without paper)

*1 : Max. 72 mm (576 dots/ line)

*2 : Connectivity of this printer with some equipment (PC, Handheld Computer) made by Panasonic has confirmed.

This printer may not connect the other equipments.

Some PC or Handheld computer are confirmed the communication with this printer via I/F(Bluetooth, IrDA,USB) works correctly.

*3 : Bluetooth is a registered trademark if the Bluetooth SIG,Inc.

Specifications

[Li-ion Battery Pack:JT-H340BT-E1 / -E2]

Items	Description	Specifications
Battery Cell	Type	Lithium ion Battery 7.2 V
	Rated capacity	1,300 mAh [JT-H340BT-E1] 1,600 mAh [JT-H340BT-E2]
Life time		300 times discharge/charge or 1year ^{*1}
Size & Mass	Size	Approx. W 70 mm x L 38 mm x D 20 mm
	Mass	Approx. 80 g
	Color	Gray [JT-H340BT-E1] Black [JT-H340BT-E2]
Environment	Operation temperature	-5 to 45 degree centigrade

*1 : The battery pack is a consumable item therefore consumption and life time is just an indication and may vary depending on usage and environment conditions.

[Battery Charger: JT-H100CG-55^{*2}]

Items	Description	Specifications
LED Indication	Power LED (Red)	Red Light : Power-on
	Charger LED (Green: X 2 (Slot))	1) Green Blink :Charging, Output short, Abnormal temperature 2) Green Light : Complete charging 3) Off : Error
Charging Function	Charging time	Approx. 4 hours (Charging 2 batteries) ^{*3}
	Charging current	Approx.1,200 mA(10 to 40degree centigrade) Approx. 840 mA(0 to 10degree centigrade)
Power	Input	AC 110 V -240 V 50/60 Hz 0.23 A
	Output	DC 7.2 V 1.2 A
Environment	Operation temperature	0 to 40 degree centigrade
Size & Mass	Size	Approx.W 94 mm x L 102 mm x D 36 mm
	Mass	Approx. 170 g

*2 : AC cord is not attached.

*3 : Charging function is limited to one Battery at any moment even if two Batteries are set to the Charger. Charging time varies depending on the remained capacity of the battery and environment temperature.

Specifications

[AC Adaptor: JT-H300AD-P1 *1]

Items	Description	Specifications
Power	Input	AC 100 V – 240 V 50/60 Hz
	Output	DC 9.5 V 1 A

*1 : AC cord is not attached.

[AC Cord: JT-H300AC-U0 *2]

Items	Description	Specifications
Power	Type	2P
	Standard of applicable	Max. AC 125 V 10A
	Length	Approx. 1.8 m

*2: JT-H300AC-U0; North America version.

Please contact Panasonic sales office for the Europe version AC code.

Warranty Policy

The warranty period and what is covered are according to the application, contract or distributor. Please ask our sales rep.

<NOTE>

The following damages are not covered by the warranty.

- Any secondary damages, including without limitation, loss of business.
- Any damages by user including dropping, water contact or any other wrong use, other than the purpose designed for.

Compliance Notice



Hereby, we declare that this printer is in compliance with the essential requirements and other relevant provisions of Directive 1999/5/EC.

The declaration of conformity may be consulted at <http://www.doc.panasonic.de>

Compliance Notice – CE Mark

This equipment is in conformance with the requirements of European Council Directive listed below:

- R&TTE Directive 1999/5/EC

This notice is based upon compliance of the product to the following standards:

- EN 60950-1
- EN 300 328
- EN 55022 (Class B), EN 55024, EN 61000-3-2, EN 61000-3-3
- EN 301 489-1 , EN 301 489-17

Importer's name and address to follow EU rules:

Panasonic Testing Centre

Panasonic Service Europe, a division of Panasonic Marketing Europe GmbH

Winsbergring 15, 22525 Hamburg, F. R. Germany

For USA

Federal Communications Commission Notices

This product complies with Part 15 of the FCC Rules. Operation is subject to the following two conditions:

- (1) this device may not cause harmful interference, and
- (2) this device must accept any interference received, including interference that may cause undesired operation.

Harmful Interference Notice

This product has been tested and complies with the specifications for a Class B digital device, pursuant to Part 15 of the FCC Rules. These limits are designed to provide reasonable protection against harmful interference in a residential installation. This equipment generates, uses, and can radiate radio frequency energy and, if not installed and used according to the instructions, may cause harmful interference to radio communications. However, there is no guarantee that interference will not occur in a particular installation. If this equipment does cause harmful interference to radio or television reception, which is found by turning the equipment off and on, the user is encouraged to try to correct the interference by one or more of the following measures:

- Reorient or relocate the receiving antenna
- Increase the separation between the equipment or devices
- Connect the equipment to an outlet other than the receiver's
- Consult a dealer or an experienced radio/TV technician for assistance

Changes or modifications to this equipment that have not been approved by Ruckus Wireless may void the user's authority to operate this equipment.

This equipment complies with FCC radiation exposure limits set forth for an uncontrolled environment and meets the FCC radio frequency (RF) Exposure Guidelines in Supplement C to OET65. This equipment has very low levels of RF energy that are deemed to comply without testing of specific absorption ratio (SAR).

To order the AC Adaptor and/or other options please ask our sales



A lithium ion/polymer battery that is recyclable powers the product you have purchased.

Please call 1-800-8-BATTERY for information on how to recycle this battery.

FCC WARNING

Changes or modifications not expressly approved by the party responsible for compliance could void the user's authority to operate the equipment.

This transmitter must not be co-located or operated in conjunction with any other antenna or transmitter.

For CANADA

Industry Canada Statement

This device complies with Industry Canada ICES-003 and RSS210 rules. Operation is subject to the following two conditions:

1. This device may not cause interference and
2. This device must accept any interference, including interference that may cause undesired operation of the device.

This equipment complies with IC radiation exposure limits set forth for an uncontrolled environment and meets RSS-102 of the IC radio frequency (RF) Exposure rules. This equipment has very low levels of RF energy that are deemed to comply without testing of specific absorption ratio (SAR).

Règlement d'Industrie Canada

Cet appareil est conforme aux normes NMB003 et RSS210 d'Industrie Canada.

Le fonctionnement est soumis aux conditions suivantes :

1. Ce périphérique ne doit pas causer d'interférences;
2. Ce périphérique doit accepter toutes les interférences reçues, y compris celles qui risquent d'entraîner un fonctionnement indésirable.

Cet équipement est conforme aux limitations concernant l'exposition aux radiations dans un environnement non contrôlé ainsi qu'aux directives de la norme CNR-102 sur l'exposition aux radiofréquences (RF) établies par IC.

Cet équipement a de très faibles niveaux d'énergie RF lesquels sont considérés comme conformes sans test du taux d'absorption spécifique (DAS).



A lithium ion/polymer battery that is recyclable powers the product you have purchased. Please call 1-800-8-BATTERY for information on how to recycle this battery.

L'appareil que vous vous êtes procuré est alimenté par une batterie au lithium-ion/lithium-polymère. Pour des renseignements sur le recyclage de la batterie, veuillez composer le 1-800-8-BATTERY.

Information for Users on Collection and Disposal of Old Equipment and used Batteries



These symbols on the products, packaging, and/or accompanying documents mean that used electrical and electronic products and batteries should not be mixed with general household waste.

For proper treatment, recovery and recycling of old products and used batteries, please take them to applicable collection points, in accordance with your national legislation and the Directives 2002/96/EC and 2006/66/EC.

By disposing of these products and batteries correctly, you will help to save valuable resources and prevent any potential negative effects on human health and the environment which could otherwise arise from inappropriate waste handling.

For more information about collection and recycling of old products and batteries, please contact your local municipality, your waste disposal service or the point of sale where you purchased the items.

Penalties may be applicable for incorrect disposal of this waste, in accordance with national legislation.



For business users in the European Union

If you wish to discard electrical and electronic equipment, please contact your dealer or supplier for further information.

[Information on Disposal in other Countries outside the European Union]

These symbols are only valid in the European Union. If you wish to discard these items, please contact your local authorities or dealer and ask for the correct method of disposal.



Note for the battery symbol (bottom two symbol examples):

This symbol might be used in combination with a chemical symbol. In this case it complies with the requirement set by the Directive for the chemical involved.

Cd

Benutzerinformation zur Sammlung und Entsorgung von veralteten Geräten und benutzten Batterien



Diese Symbole auf den Produkten, Verpackungen und/oder Begleitdokumenten bedeuten, dass benutzte elektrische und elektronische Produkte und Batterien nicht in den allgemeinen Hausmüll gegeben werden sollen.

Bitte bringen Sie diese alten Produkte und Batterien zur Behandlung, Aufarbeitung bzw. zum Recycling gemäß Ihrer Landesgesetzgebung und den Richtlinien 2002/96/EG und 2006/66/EG zu Ihren zuständigen Sammelpunkten.

Indem Sie diese Produkte und Batterien ordnungsgemäß entsorgen, helfen Sie dabei, wertvolle Ressourcen zu schützen und eventuelle negative Auswirkungen auf die menschliche Gesundheit und die Umwelt zu vermeiden, die anderenfalls durch eine unsachgemäße Abfallbehandlung auftreten können.

Wenn Sie ausführlichere Informationen zur Sammlung und zum Recycling alter Produkte und Batterien wünschen, wenden Sie sich bitte an Ihre örtlichen Verwaltungsbehörden, Ihren Abfallentsorgungsdienstleister oder an die Verkaufseinrichtung, in der Sie die Gegenstände gekauft haben.

Gemäß Landesvorschriften können wegen nicht ordnungsgemäßer Entsorgung dieses Abfalls Strafgelder verhängt werden.



Für geschäftliche Nutzer in der Europäischen Union

Wenn Sie elektrische oder elektronische Geräte entsorgen möchten, wenden Sie sich wegen genauerer Informationen bitte an Ihren Händler oder Lieferanten.



[Informationen zur Entsorgung in Ländern außerhalb der Europäischen Union]

Diese Symbole gelten nur innerhalb der Europäischen Union. Wenn Sie solche Gegenstände entsorgen möchten, erfragen Sie bitte bei den örtlichen Behörden oder Ihrem Händler, welches die ordnungsgemäße Entsorgungsmethode ist.

Cd

Hinweis zum Batteriesymbol (unten zwei Symbolbeispiele):

Dieses Symbol kann in Kombination mit einem chemischen Symbol verwendet werden. In diesem Fall erfüllt es die Anforderungen derjenigen Richtlinie, die für die betreffende Chemikalie erlassen wurde.

Informace pro spotřebitele o sběru a likvidaci odpadu z elektrických a elektronických zařízení a použitých baterií z domácností.



Tyto symboly na výrobcích, obalech nebo v průvodní dokumentaci znamenají, že použítá elektrická a elektronická zařízení a baterie nepatří do běžného domácího odpadu.

Správná likvidace, recyklace a opětovné použití jsou možné jen pokud odevzdáte tato zařízení a použité baterie na místech k tomu určených, za což neplatíte žádné poplatky, v souladu s platnými národními předpisy a se Směrnicemi 2002/96/EU a 2006/66/EU.

Správnou likvidací přístrojů a baterií pomůžete šetřit cenné suroviny a předcházet možným negativním účinkům na lidské zdraví a na přírodní prostředí, které jinak mohou vzniknout při nesprávném zacházení s odpady.

Další informace o sběru, likvidaci a recyklaci starých přístrojů a použitých baterií Vám poskytnou místní úřady, provozovny sběrných dvorů nebo prodejna, ve které jste toto zboží zakoupili.

Při nesprávné likvidaci odpadu vám hrozí pokuta v souladu s národní legislativou a místními předpisy.



Informace pro právnické osoby se sídlem v zemích Evropské Unie (EU)

Pokud chcete likvidovat elektrická nebo elektronická zařízení, obraťte se na prodejce nebo dodavatele s žádostí o další informace.

Informace o likvidaci v zemích mimo Evropskou Unii (EU)

Tyto symboly platí jen v zemích Evropské unie. Pokud chcete likvidovat tento produkt, obraťte se na místní úřady nebo prodejce a informujte se o správném způsobu likvidace.



Poznámka k symbolu baterie (symboly uprostřed a dole)

Tento symbol může být použit v kombinaci s chemickým symbolem. V tomto případě splňuje tento symbol legislativní požadavky, které jsou předepsány pro chemickou látku obsaženou v baterii.

Cd

Avis aux utilisateurs concernant la collecte et l'élimination des piles et des appareils électriques et électroniques usagés



Apposé sur le produit lui-même, sur son emballage, ou figurant dans la documentation qui l'accompagne, ce pictogramme indique que les piles et appareils électriques et électroniques usagés doivent être séparés des ordures ménagères.

Afin de permettre le traitement, la valorisation et le recyclage adéquats des piles et des appareils usagés, veuillez les porter à l'un des points de collecte prévus, conformément à la législation nationale en vigueur ainsi qu'aux directives 2002/96/CE et 2006/66/CE.

En éliminant piles et appareils usagés conformément à la réglementation en vigueur, vous contribuez à prévenir le gaspillage de ressources précieuses ainsi qu'à protéger la santé humaine et l'environnement contre les effets potentiellement nocifs d'une manipulation inappropriée des déchets.

Pour de plus amples renseignements sur la collecte et le recyclage des piles et appareils

usagés, veuillez vous renseigner auprès de votre mairie, du service municipal d'enlèvement des déchets ou du point de vente où vous avez acheté les articles concernés.

Le non-respect de la réglementation relative à l'élimination des déchets est passible d'une peine d'amende.



Pour les utilisateurs professionnels au sein de l'Union européenne

Si vous souhaitez vous défaire de pièces d'équipement électrique ou électronique, veuillez vous renseigner directement auprès de votre détaillant ou de votre fournisseur.



[Information relative à l'élimination des déchets dans les pays extérieurs à l'Union européenne]

Ce pictogramme n'est valide qu'à l'intérieur de l'Union européenne. Pour connaître la procédure applicable dans les pays hors Union Européenne, veuillez vous renseigner auprès des autorités locales compétentes ou de votre distributeur.

Cd

Note relative au pictogramme à apposer sur les piles (voir les 2 exemples ci-contre)

Le pictogramme représentant une poubelle sur roues barrée d'une croix est conforme à la réglementation. Si ce pictogramme est combiné avec un symbole chimique, il remplit également les exigences posées par la Directive relative au produit chimique concerné.

Brugerinformation om indsamling og bortskaffelse af elektronikskrot og brugte batterier



Disse symboler på produkter, emballage og/eller ledsagedokumenter betyder, at brugte elektriske og elektroniske produkter og batterier ikke må smides ud som almindeligt husholdningsaffald. Sådanne gamle produkter og batterier skal indleveres til behandling, genvinding resp. recycling i henhold til gældende nationale bestemmelser samt direktiverne 2002/96/EF og 2006/66/EF. Ved at bortskaffe sådanne produkter og batterier på korrekt vis hjælper du med til at beskytte værdifulde ressourcer og imødegå de negative påvirkninger af det menneskelige helbred og miljøet, som vil kunne være følgen af usagkyndig affaldsbehandling. Ønsker du mere udførlig information om indsamling og recycling af gamle produkter og batterier, kan du henvende dig til din kommune, deponeringselskabet eller stedet, hvor du har købt produkterne. Usagkyndig bortskaffelse af elektronikskrot og batterier kan eventuelt udløse bødeforlæg.



For kommercielle brugere i Den Europæiske Union

Når du ønsker at kassere elektriske eller elektroniske apparater, bedes du henvende dig til din forhandler eller leverandør for nærmere information.

[Information om bortskaffelse i lande uden for Den Europæiske Union]

Disse symboler gælder kun inden for Den Europæiske Union. Ønsker du at kassere sådanne produkter, bedes du forhøre dig hos din forhandler eller kommune med henblik på en hensigtsmæssig bortskaffelse.



Information om batterisymbol (to eksempler nedenfor):

Dette symbol kan optræde sammen med et kemisk symbol. I så fald opfylder det kravene for det direktiv, som er blevet fastlagt for det pågældende kemikalie.

Cd

Tietoja vanhojen laitteiden ja käytettyjen paristojen keräyksestä ja hävittämisestä



Nämä merkinnät tuotteissa, pakkauksissa ja/tai niihin liitetyissä dokumenteissa tarkoittavat, että käytettyjä sähkö- ja elektroniikkalaitteita sekä paristoja ei tule sekoittaa tavalliseen kotitalousjätteeseen. Vanhojen tuotteiden ja käytettyjen paristojen asianmukainen käsittely, talteen ottaminen ja kierrätys edellyttävät niiden viemistä tarjolla oleviin keräyspisteisiin kansallisten määräysten sekä direktiivien 2002/96/EC ja 2006/66/EC mukaisesti. Kun hävität tuotteet ja paristot asianmukaisesti, autat säilyttämään arvokkaita luonnonvaroja sekä ehkäisemään ihmisen terveydelle ja ympäristölle haitallisia vaikutuksia, joita vääränlainen jätteenkäsittely voi aiheuttaa. Ota yhteys asuinkuntasi viranomaisiin, jätteenkäsittelystä vastaavaan tahoon tai tuotteiden ostopaikkaan saadaksesi lisätietoja vanhojen tuotteiden ja paristojen keräyksestä ja kierrätyksestä. Tuotteiden epäasianmukaisesta hävittämisestä saattaa seurata kansallisessa lainsäädännössä määrätty rangaistus.



Yrityksille Euroopan unionissa

Lisätietoja sähkö- ja elektroniikkalaitteiden hävittämisestä saat jälleenmyyjältä tai tavarantoimittajalta.

[Tietoja hävittämisestä Euroopan unionin ulkopuolella]

Nämä merkinnät ovat voimassa ainoastaan Euroopan unionin alueella. Ota yhteys paikallisiin viranomaisiin tai jälleenmyyjään saadaksesi tietoja oikeasta jätteenkäsittelymenetelmästä.



Paristomerkintää koskeva huomautus (alla kaksi esimerkkiä merkinnöistä):

Tämä merkki voi olla käytössä yhdessä kemiallisen merkinnän kanssa. Siinä tapauksessa merkki noudattaa kyseistä kemikaalia koskevan direktiivin vaatimuksia.

Cd

Informatie voor gebruikers betreffende het verzamelen en verwijderen van oude uitrusting en lege batterijen



Deze symbolen op de producten, verpakkingen, en/of begeleidende documenten betekenen dat gebruikte elektrische en elektronische producten en batterijen niet met het algemene huishoudelijke afval gemengd mogen worden. Voor een correcte behandeling, recuperatie en recyclage van oude producten en lege batterijen moeten zij naar de bevoegde verzamelpunten gebracht worden in overeenstemming met uw nationale wetgeving en de Richtlijnen 2002/96/EC en 2006/66/EC. Door deze producten en batterijen correct te verwijderen draagt u uw steentje bij tot het beschermen van waardevolle middelen en tot de preventie van potentiële negatieve effecten op de gezondheid van de mens en op het milieu die anders door een onvakkundige afvalverwerking zouden kunnen ontstaan. Voor meer informatie over het verzamelen en recycleren van oude producten en batterijen, gelieve contact op te nemen met uw plaatselijke gemeente, uw afvalverwijderingsdiensten of de winkel waar u de goederen gekocht hebt. Voor een niet-correcte verwijdering van dit afval kunnen boetes opgelegd worden in overeenstemming met de nationale wetgeving.



Voor zakengebruikers in de Europese Unie

Indien u elektrische en elektronische uitrusting wilt verwijderen, neem dan contact op met uw dealer voor meer informatie.

[Informatie over de verwijdering in andere landen buiten de Europese Unie]

Deze symbolen zijn enkel geldig in de Europese Unie. Indien u wenst deze producten te verwijderen, neem dan contact op met uw plaatselijke autoriteiten of dealer, en vraag informatie over de correcte wijze om deze producten te verwijderen.



Opmerking over het batterijsymbool (beneden twee voorbeelden):

Dit symbool kan gebruikt worden in verbinding met een chemisch symbool. In dat geval wordt de eis, vastgelegd door de Richtlijn voor de betrokken chemische producten vervuld.

Cd

Informazioni per gli utenti sulla raccolta e l'eliminazione di vecchie apparecchiature e batterie usate



Questi simboli sui prodotti, sull'imballaggio, e/o sulle documentazioni o manuali accompagnanti i prodotti indicano che i prodotti elettrici, elettronici e le batterie usate non devono essere buttati nei rifiuti domestici generici. Per un trattamento adeguato, recupero e riciclaggio di vecchi prodotti e batterie usate, vi preghiamo di portarli negli appositi punti di raccolta, secondo la legislazione vigente nel vostro Paese e le Direttive 2002/96/EC e 2006/66/EC. Smaltendo correttamente questi prodotti e le batterie, contribuirete a salvare importanti risorse e ad evitare i potenziali effetti negativi sulla salute umana e sull'ambiente che altrimenti potrebbero verificarsi in seguito ad un trattamento inappropriato dei rifiuti. Per ulteriori informazioni sulla raccolta e sul riciclaggio di vecchi prodotti e batterie, vi preghiamo di contattare il vostro comune, i vostri operatori per lo smaltimento dei rifiuti o il punto vendita dove avete acquistato gli articoli. Sono previste e potrebbero essere applicate sanzioni qualora questi rifiuti non siano stati smaltiti in modo corretto ed in accordo con la legislazione nazionale .



Per utenti commerciali nell'Unione Europea

Se desiderate eliminare apparecchiature elettriche ed elettroniche, vi preghiamo di contattare il vostro commerciante od il fornitore per maggiori informazioni.



[Informazioni sullo smaltimento rifiuti in altri Paesi fuori dall'Unione Europea]

Questi simboli sono validi solo all'interno dell'Unione Europea. Se desiderate smaltire questi articoli, vi preghiamo di contattare le autorità locali od il rivenditore ed informarvi sulle modalità per un corretto smaltimento.

Cd

Nota per il simbolo delle batterie (esempio con simbolo chimico riportato sotto il simbolo principale):

Questo simbolo può essere usato in combinazione con un simbolo chimico; in questo caso è conforme ai requisiti indicati dalla Direttiva per il prodotto chimico in questione.

Informacija vartotojui apie surinkimą ir pašalinimą senos įrangos ir baterijų atliekų



Šito simbolio atvaizdas ant produktų, įpakavimų, ir/arba pridėtų dokumentų reiškia, kad elektrinius ir elektroninius produktus bei baterijų atliekas draudžiama išmesti kartu su naminiėmis atliekomis.

Tinkamam apdorojimui bei perdirbimui senos elektrinės įrangos ir baterijų atliekų nuneškite jas į surinkimo punktą, įsteigtą pagal nacionalinius teisės aktus ir Europos Sąjungos direktyvas 2002/96/EC ir 2006/66/EC.

Tinkamai pašalinant elektroninės įrangos ir baterijų atliekas padedate atgauti vertybines medžiagas bei užkirsti kelią neigiamoms pasekmėms žmonių sveikatai ir aplinkai, kurios gali atsirasti dėl netinkamo atliekų pašalinimo.

Norint daugiau sužinoti apie surinkimą ir perdirbimą senos įrangos bei baterijų atliekų prašome susisiekti su Jūsų savivaldybės įstaiga, atliekų šalinimo bendrove arba parduotuve, kurioje nusipirkote šitas baterijas.

Už netinkamą šitų atliekų pašalinimą gresia baudų paskyrimas pagal nacionalinę teisėtvarą.



Europos Sąjungos įmonės

Prieš pašalinant elektroninę ir elektrinę įrangą prašome susisiekti su jos platintoju arba teikėju.



Informacija apie atliekų pašalinimą kitose Europos Sąjungai nepriklausančiose valstybėse

Šitie simboliai galioja tik Europos Sąjungoje. Norint pašalinti šiais simboliais pažymėtus produktus prašome susisiekti su vietinėmis įstaigomis arba su jų platintoju ir pasiteirauti apie tinkamą atliekų pašalinimą.

Priedas prie baterijos simbolio (du paskutiniai simbolių atvaizdai):

Šitas simbolis gali būti naudojamas su cheminiais simboliais. Tokiu būdu įgyvendinami nustatyti Europos Sąjungos direktyvoje reikalavimai dėl cheminių medžiagų.

Cd

Information för användare om hopsamling och avfallshantering av gammalt material och använda batterier



Dessa symboler på produkter, förpackningar och/eller medföljande dokument betyder att man inte ska blanda elektriska och elektroniska produkter eller batterier med vanliga hushållssopor.

För att gamla produkter och använda batterier ska hanteras och återvinnas på rätt sätt ska man ta dem till passande uppsamlingsställe i enlighet med nationella bestämmelser och direktiven 2002/96/EC och 2006/66/EC.

När du kasserar dessa produkter och batterier på rätt sätt hjälper du till att spara på värdefulla resurser och förebygga en potentiell negativ inverkan på människors hälsa och på miljön som annars skulle kunna uppstå p.g.a. otillbörlig avfallshantering.

För mer information om uppsamling och återvinning av gamla produkter och batterier, var god kontakta din kommun, din avfallshanterare eller det försäljningsställe där du köpte din artikel.

Olämplig avfallshantering kan beläggas med straff i enlighet med nationella bestämmelser.



För affärsanvändare inom den Europeiska Unionen

Om du vill kassera elektrisk eller elektronisk utrustning, var god kontakta din återförsäljare eller leverantör för ytterligare information.

[Information om avfallshantering i länder utanför den Europeiska unionen]

Dessa symboler är endast giltiga inom den Europeiska Unionen. Om du vill kassera dessa föremål, var god kontakta dina lokala myndigheter eller din lokala återförsäljare och fråga efter rätt metod för avfallshantering.



Notering till batterisymbolen (nedtill, två symbolexempel):

Denna symbol kan användas i kombination med en kemisk symbol. I detta fall iakttar den de krav som ställs upp i direktivet för den aktuella kemikalien.

Informácie pre užívateľ'ov o likvidácii použitého elektrického a elektronického zariadenia (súkromné domácnosti)



Tieto symboly na prístrojoch, batériach a baleniach alebo v priložených návodoch na použitie znamenajú, že použité elektrické a elektronické zariadenia a batérie sa nesmú miešať so všeobecným domácim odpadom.

Pre správne zaobchádzanie, obnovu a recykláciu, odveďte prosím tieto produkty na určené zberné miesta, kde budú prijaté bez poplatku v súlade so Smernicami 2002/96/ES a 2006/66/ES. V niektorých krajinách je možné tieto produkty vrátiť priamo miestnemu maloobchodu v prípade, ak si objednáte podobný nový výrobok.

Správna likvidácia týchto produktov pomôže ušetriť hodnotné zdroje a zabrániť možným negatívnym vplyvom na ľudské zdravie a prostredie, ktoré môžu vzniknúť z nesprávneho zaobchádzania s odpadom. Pre bližšie informácie o vašom najbližšom zbernom mieste kontaktujte, prosím, vaše miestne úrady.

V prípade nesprávnej likvidácie odpadu môžu byť uplatnené pokuty v súlade so štátnou legislatívou.



Pre právnické osoby v Európskej únii

Ak potrebujete zlikvidovať opotrebované elektrické a elektronické produkty, pre bližšie informácie kontaktujte, prosím, svojho miestneho predajcu alebo dodávateľa.



Informácie o likvidácii elektrického a elektronického odpadu v krajinách mimo Európskej únie

Tieto symboly platia iba v Európskej únii. Ak si prajete zlikvidovať tento produkt alebo batériu, pre bližšie informácie kontaktujte, prosím, vaše miestne úrady alebo predajcu a informujte sa o správnej metóde likvidácie.

Poznámka k symbolu batérie (symbol v strede a dole)

Tento symbol môže byť použitý v kombinácii s chemickým symbolom. Chemický symbol určuje obsiahnutú chemickú látku v súlade s príslušnými Smernicami ES.

Eski Ekipman ve Pillerin Toplanması ve Elden Çıkarılması konusunda Kullanıcılar için Bilgiler



Ürünler, ambalaj ve/veya ekli belgeler üzerindeki bu semboller kullanılmış elektrik ve elektronik ürünlerin ve pillerin genel ev atığı ile karıştırılmaması gerektiğini ifade eder.

Eski ürünlerin ve kullanılmış pillerin uygun kullanımı, düzeltimi ve geri dönüşümü için, lütfen onları ulusal yasalarınıza ve 2002/96/EC ve 2006/66/EC yönergelerine uygun toplama noktalarına götürün.

Bu ürünleri ve pilleri doğru bir şekilde elden çıkarmak suretiyle, değerli kaynakların

korunmasına ve uygunsuz atık işlemleri nedeni ile insan sağlığı üzerinde oluşabilecek her türlü muhtemel olumsuz etkinin önlenmesine yardım edeceksiniz.

Eski ürünlerin ve pillerin toplanması ve geri kazanılması hakkında daha fazla bilgi için, lütfen ilgili yerel yetkililer, atık işleme merkezleri veya ürünleri satın aldığınız satış noktası ile temas kurun.

Bu atıkların hatalı olarak elden çıkarılması durumunda ulusal yasalara göre cezalar uygulanabilir.



Avrupa Birliğindeki ticari kullanıcılar için

Eğer elektrik ve elektronik ekipmanı iskartaya çıkarmayı arzu ediyorsanız, daha fazla bilgi için lütfen bayiniz veya satıcınız ile temas kurun.



[Avrupa Birliği dışındaki diğer ülkelerde elden çıkarma konusundaki bilgiler]

Bu semboller sadece Avrupa Birliğinde geçerlidir. Eğer bu malları iskartaya çıkarmayı arzu ediyorsanız, lütfen yerel yetkilileriniz veya bayileriniz ile temas kurun ve doğru elden çıkarma metodunu sorun.

Pil sembolü için not (alttaki sembol örnekleri):

Bu sembol, kimyasal bir sembol ile bağlantılı olarak kullanılabilir. Bu durumda ilgili kimyasal Yönerge ile düzenlenen gereksinimlere uyum sağlanır.

Informasjon om kassering i land utenfor den Europeiske Union



Dette symbolet er kun gyldig i den Europeiske Union.
Hvis du ønsker å kassere dette produktet, må du ta kontakt med forhandleren eller de lokale myndigheter og spørre dem om hvordan det skal kasseres på riktig måte.

معلومات حول التخلص من المخلفات في الدول الأخرى خارج نطاق الاتحاد الأوروبي

هذا الرمز ساري المفعول في الاتحاد الأوروبي فقط.

إذا رغبت في التخلص من هذا المنتج، يُرجى الاتصال بالسلطات المحلية أو الموزع

لديك والسؤال عن الطريقة الصحيحة للتخلص منه.



在欧盟以外其它国家的废物处置信息



此符号仅在欧盟有效。
如果要废弃此产品，请与当地机构或经销商联系，获取正确的废弃方法。

歐盟以外國家的棄置資訊



本符號只適用於歐盟國家。
如欲丟棄本產品，請聯絡當地政府單位或經銷商，洽詢正確的棄置方法。

EU 가

가



EU

Информация по обращению с отходами для стран, не входящих в Европейский Союз



Действие этого символа распространяется только на Европейский Союз. Если Вы собираетесь выбросить данный продукт, узнайте в местных органах власти или у дилера, как следует поступать с отходами такого типа.

Інформація щодо утилізації в країнах, які не входять в Європейський Союз



Даний символ дійсний тільки на території Європейського Союзу.
При потребі утилізації даного виробу зверніться до місцевого керівництва або дилера щодо правильного методу її здійснення.

Panasonic Canada Inc.
5770, Ambler Drive
Mississauga (Ontario)
Canada, L4W 2T3
www.panasonic.ca

Panasonic Solutions Company
Unit of Panasonic Corporation of North America
One Panasonic Way
Secaucus, NJ 07094

The operation instructions can be downloaded from following URL.

<http://www.panasonic.net/pss/ht/jt-h300pr.html>

Specifications and manuals are subject to change without notice.

Panasonic System Networks Co., Ltd.

Web Site: <http://panasonic.net/>

Printed in Japan
