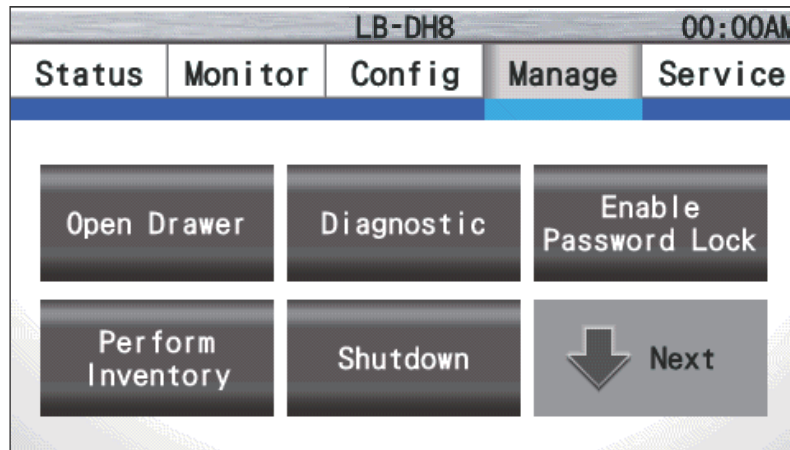


## Manage menu

This menu allows you to manipulate the unit.



Open Drawer	<p>Unlocks a magazine drawer.</p> <ul style="list-style-type: none"> <li>• Select module and magazine drawer. Read a message before performing an operation. (⇒ 30)</li> <li>• Once a magazine drawer has been unlocked, it protrudes slightly.</li> <li>• The magazine drawer can be unlocked only when an unlock operation has been permitted by an application. For details, refer to the pertinent application manual.</li> <li>• After the magazine drawer has been pushed in, inventory is executed to acquire the magazine information and the changer unit operates.</li> </ul>
Diagnostic	<p>Performs a self-diagnosis. (⇒ 109)</p>
Enable Password Lock	<p>Locks the password.</p> <ul style="list-style-type: none"> <li>• Once operations on the control panel are completed, it is recommended that it be put in a password-protected state.</li> </ul>
Perform Inventory	<p>All: Reacquires all magazine information.            Drawer Scan: Reacquires magazine information on the each drawer.            Select Slot: Reacquires the specified magazine information.</p> <ul style="list-style-type: none"> <li>• Select a module. (⇒ 30)</li> <li>• Selecting a magazine drawer or “Select” will execute the operation.</li> </ul>
Shutdown	<p>Shutdown: Shuts down the unit.</p> <ul style="list-style-type: none"> <li>• Terminate the application prior to this operation.</li> <li>• The unit has a Wake-on-LAN capability. After this shutdown operation, the unit can be started quickly through the use of an LAN port.</li> </ul> <p>Reboot: Restarts the unit.</p> <ul style="list-style-type: none"> <li>• To avoid an impact on the application, terminate it prior to this restart operation.</li> </ul>

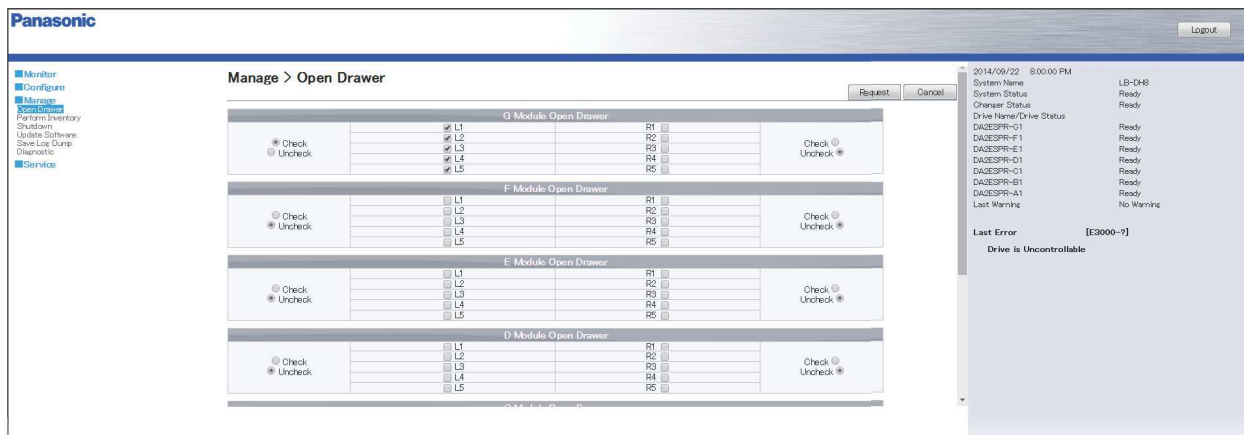
## Manage menu

This menu allows you to manipulate the unit.

### Open Drawer <Manage>

Requests magazine drawer unlock.

- After sending the unlock request, the magazine drawer can be unlocked on the control panel. (⇒ 67)

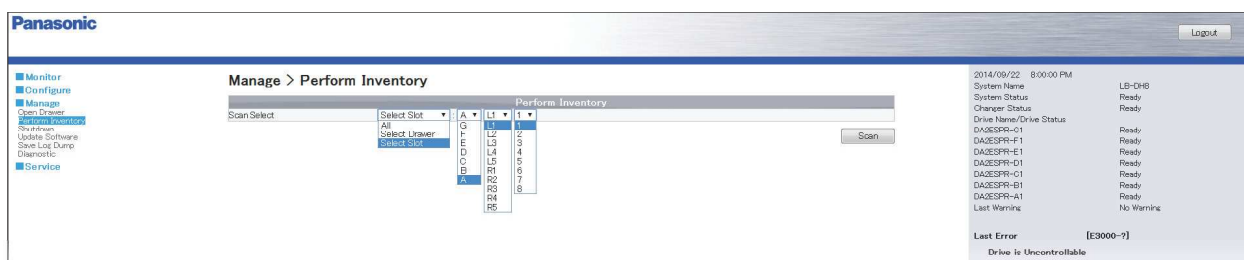


Request	Sends the request to unlock the selected magazine drawer to the control panel.
Cancel	Cancels the magazine drawer unlock request, which had been sent to the control panel.
Check	Selects all checkboxes of left or right magazine drawers in each module.
Uncheck	Deselects all checkboxes of left or right magazine drawers in each module.

### Perform Inventory <Manage>

Executes inventory.

- Change the settings, then select “Scan” to scan the magazines.



All	Reacquires all magazine information.
Select Drawer	Reacquires the magazine information of the specified magazine drawers.
Select Slot	Specifies a magazine number, and reacquires the information of the specified magazine.

# Glossary

**Changer unit**

The changer unit is a robot mechanism to transfer magazines from the magazine drawer to the drive system. The Bottom Module (LB-DH81) has a single built-in unit.

**Drive**

Drive is a device built into a drive system. The Base Module (LB-DH80) and Writer Unit (LB-XD82) have twelve built-in units respectively.

**Drive system**

Drive system is a drive mechanism for reading data from and writing data to a magazine. The Base Module and the Writer Unit have a single built-in system respectively.

**Email notification**

Email notification is a function that sends information about errors and warnings that have occurred by email.

**Exclusive use connection cable**

The dedicated connection cable controls the Bottom Module, Control Unit (LB-XC82), and Writer Unit from the Base Module.

**Inventory**

Inventory is a process in which RFIDs and 1D/2D codes are read to acquire all magazine information in a magazine drawer.

**Magazine**

Magazine is a recording medium containing multiple discs and an RFID tag. The Base Module and the Extension Unit (LB-XH82) can mount up to 76 magazines respectively.

**Magazine drawer**

The magazine drawer is a drawer-style mechanism to contain the magazines. The Base Module and the Extension Unit have five magazine drawers on either side. One magazine drawer can store a maximum of eight magazines (six for some drawers).

**Magazine eject mode**

Magazine eject mode is a mode for ejecting a magazine specified through an application. The display of the control panel will be changed so that you can see which magazine has been specified.

**Mounting bracket**

Mounting brackets are used when fixing the Base Module and Bottom Module, Extension Unit to a rack. Attach one of the two mounting brackets to the left, and the other one to the right.

**Web interface**

Web interface is one of the interfaces for making settings and performing maintenance of the unit. It is used by connecting with http or https over a network.

**Write disable switch**

Write disable switch is a switch built into a magazine that prevents data from being accidentally deleted or overwritten.