

- The application product(LB-SC9) is the unit used in the system.
- This manual is the excerpt of only portions related to the application of the manual of whole system.

Thank you for purchasing this product.
Please read these instructions carefully before using this product, and save this manual for future use.

Precautions

WARNING

Unit

To reduce the risk of fire, electric shock or product damage,

- Do not expose this unit to rain, moisture, dripping or splashing.
- Do not place objects filled with liquids, such as vases, on this unit.
- Use only the recommended accessories.
- Do not remove covers.
- Do not repair this unit by yourself. Refer servicing to qualified service personnel.

AC cable

- The socket outlet shall be installed near the equipment and shall be easily accessible.
- Do not use any other AC cables except the supplied one.

USB cable

- Do not use any other USB cables except the supplied one.

CAUTION

Unit

- This unit utilizes a laser. Use of controls or adjustments or performance of procedures other than those specified herein may result in hazardous radiation exposure.
- This unit may receive radio interference caused by mobile telephones during use. If such interference occurs, please increase separation between this unit and the mobile telephone.
- Use the supplied pedestal in vertical installation.
- The unit is in the standby condition when the AC adaptor is connected. The primary circuit is always "live" as long as the AC adaptor is connected to an electrical outlet.
- Do not place sources of naked flames, such as lighted candles, on this unit.

Placement

- To reduce the risk of fire, electric shock or product damage,
- Do not install or place this unit in a bookcase, built-in cabinet or in another confined space. Ensure this unit is well ventilated.
 - Do not obstruct this unit's ventilation openings with newspapers, tablecloths, curtains, and similar items.

THE FOLLOWING APPLIES ONLY IN THE U.S.A.

FCC Note:

This equipment has been tested and found to comply with the limits for a Class A digital device, pursuant to part 15 of the FCC Rules. These limits are designed to provide reasonable protection against harmful interference when the equipment is operated in a commercial environment. This equipment generates, uses, and can radiate radio frequency energy and, if not installed and used in accordance with the instruction manual, may cause harmful interference to radio communications. Operation of this equipment in a residential area is likely to cause harmful interference in which case the user will be required to correct the interference at his own expense.

FCC Caution: To assure continued compliance, follow the attached installation instructions and use only shielded interface cables with ferrite core when connecting to computer or peripheral devices. Any changes or modifications not expressly approved by the party responsible for compliance could void the user's authority to operate this equipment.

This device complies with Part 15 of the FCC Rules. Operation is subject to the following two conditions: (1) This device may not cause harmful interference, and (2) this device must accept any interference received, including interference that may cause undesired operation.

Responsible Party:

Panasonic Corporation of North America
Two Riverfront Plaza, Newark, NJ 07102-5490

Support Contact:

Conforms to UL STD 60950-1.

AC adaptor

This AC adaptor operates on AC between 100V and 240V. But

- In the U.S.A. and Canada, the AC adaptor must be connected to a 120V AC power supply only.
- When connecting to an AC supply outside of the U.S.A. or Canada, use a plug adaptor to suit the AC outlet configuration.
- When connecting to a supply of greater than AC 125V, ensure the cord you use is suited to the voltage of the AC supply and the rated current of the AC adaptor.
- Contact an electrical parts distributor for assistance in selecting a suitable AC plug adaptor or AC cord set.
- Do not use any other AC adaptors except the supplied one.

USB cable

- Be sure to check the orientation of the connector before connecting the USB port. Carefully insert the connector all the way in until it is firmly in place.

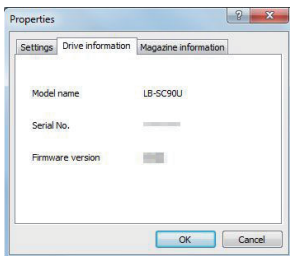
Product identification marking

Product	Location
DATA ARCHIVER	Back
AC Adaptor	Bottom

Drive information

Display unit configuration information.

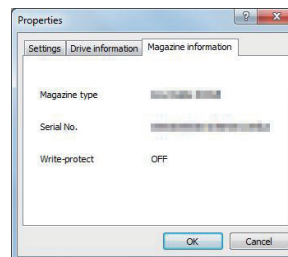
- 1 Right-click the Drive icon of the unit.**
- 2 Select “Utility” → “Properties” from the menu.**
- 3 Select the “Drive information” tab on the displayed screen.**
 - The following information on the unit will be shown.
 - Model name
Displays the model name of the unit.
 - Serial No.
Displays the serial number of the unit.
 - Firmware version
Displays the current firmware version of the unit.



Magazine information

Display magazine information.

- 1 Right-click the Drive icon of the unit.**
- 2 Select “Utility” → “Properties” from the menu.**
- 3 Select the “Magazine information” tab on the displayed screen.**
 - The following information on the magazine will be shown.
 - Magazine type
Displays the disc type inside of magazine and the capacity.
 - Serial No.
Displays the serial number of the magazine.
 - Write-protect
Allows you to confirm the write-protect switch's condition of the magazine. (⇒ 9)
“Write-enabled” of the write-protect switch's condition shows as “OFF”, “Write-disabled” shows as “ON”.



Version Information

Display the current driver software version.

- 1 Right-click the Drive icon of the unit.**
- 2 Select “Utility” → “Version Information” from the menu.**
 - The current driver software version will be shown.

