

Technics[®]

OTTAVA[™] *f*



SC-C70

Compact Stereo System
Chaîne stéréo compacte

Basic Owner's Manual
Manuel d'utilisation Fonctions de base

Music is borderless and timeless, touching people's hearts across cultures and generations.

Each day the discovery of a truly emotive experience from an unencountered sound awaits.

Let us take you on your journey to rediscover music.

Sans frontières, la musique est aussi intemporelle, touchant le coeur des gens en traversant les cultures et les générations.

Tous les jours, nous attendons la révélation d'une expérience émotionnelle authentique à partir d'un son venu de nulle part.

Permettez-nous de vous emmener en voyage pour redécouvrir la musique.

Rediscover Music™

Technics

Delivering the Ultimate Emotive Musical Experience to All

At Technics we understand that the listening experience is not purely about technology but the magical and emotional relationship between people and music.

We want people to experience music as it was originally intended and enable them to feel the emotional impact that enthuses and delights them.

Through delivering this experience we want to support the development and enjoyment of the world's many musical cultures. This is our philosophy.

With a combination of our love of music and the vast high-end audio experience of the Technics team, we stand committed to building a brand that provides the ultimate emotive musical experience by music lovers, for music lovers.

Apportez à tous l'expérience musicale empreinte d'émotions

Chez Technics, nous savons que l'expérience de l'écoute n'est pas purement et simplement une question de technologie, mais de relation magique entre les personnes et la musique.

Nous voulons que tout un chacun puisse ressentir la musique telle qu'elle a été conçue à l'origine et lui permettre de ressentir le choc émotionnel qu'il brûle de connaître.

En apportant ce vécu, nous cherchons à accompagner le développement et le plaisir des nombreuses cultures musicales du monde. Telle est notre philosophie.

Ici et maintenant, alliant l'amour de la musique et la grande expérience musicale de l'équipe Technics, nous sommes pleinement déterminés à construire une marque qui apporte le vécu musical émotionnel aux fervents de la musique.

Director
Directeur
Michiko Ogawa

A handwritten signature in black ink, reading "Michiko Ogawa". The signature is fluid and cursive, with a long horizontal stroke extending from the end of the name.

Thank you for purchasing this product.

Please read these instructions carefully before using this product, and save this manual for future use.

- About descriptions in these operating instructions
 - Pages to be referred to are indicated as “⇒ ○○”.
 - The illustrations shown may differ from your unit.
- A more detailed operating instruction is available in “Operating Instructions” (PDF format). To read it, download it from the website.
www.technics.com/support/
- You will need Adobe Reader to browse or print “Operating Instructions” (PDF format). You can download and install a version of Adobe Reader that you can use with your OS from the following website.
<http://get.adobe.com/reader/>



If you have any questions, visit:

U.S.A.: <http://shop.panasonic.com/support>

Canada: www.panasonic.ca/english/support

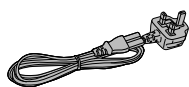
Register online at <http://shop.panasonic.com/support> (U.S. customers only)

Table of contents

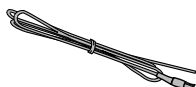
IMPORTANT SAFETY INSTRUCTIONS	05
Installation	07
Control reference guide	08
Connections	11
Network settings	12
Playing back CDs	17
Listening to FM/AM Radio	18
Using Bluetooth®	19
Licenses	20
Specifications	21
Others	24

Accessories

AC power supply
cord (1)
K2CG3YY00176



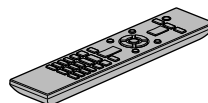
FM indoor
antenna (1)
RSAX0002



AM loop
antenna (1)
N1DYYYY00011



Remote control (1)
N2QAYA000149



Batteries for
remote control (2)



- Product numbers provided in these operating instructions are correct as of July 2017.
- These may be subject to change.
- Do not use AC power supply cord with other equipment.

IMPORTANT SAFETY INSTRUCTIONS

Read these operating instructions carefully before using the unit. Follow the safety instructions on the unit and the applicable safety instructions listed below. Keep these operating instructions handy for future reference.

- 1 Read these instructions.
- 2 Keep these instructions.
- 3 Heed all warnings.
- 4 Follow all instructions.
- 5 Do not use this apparatus near water.
- 6 Clean only with dry cloth.
- 7 Do not block any ventilation openings. Install in accordance with the manufacturer's instructions.
- 8 Do not install near any heat sources such as radiators, heat registers, stoves, or other apparatus (including amplifiers) that produce heat.
- 9 Do not defeat the safety purpose of the polarized or grounding-type plug. A polarized plug has two blades with one wider than the other. A grounding-type plug has two blades and a third grounding prong. The wide blade or the third prong are provided for your safety. If the provided plug does not fit into your outlet, consult an electrician for replacement of the obsolete outlet.
- 10 Protect the power cord from being walked on or pinched particularly at plugs, convenience receptacles, and the point where they exit from the apparatus.
- 11 Only use attachments/accessories specified by the manufacturer.
- 12 Use only with the cart, stand, tripod, bracket, or table specified by the manufacturer, or sold with the apparatus. When a cart is used, use caution when moving the cart/apparatus combination to avoid injury from tip-over.
- 13 Unplug this apparatus during lightning storms or when unused for long periods of time.
- 14 Refer all servicing to qualified service personnel. Servicing is required when the apparatus has been damaged in any way, such as power-supply cord or plug is damaged, liquid has been spilled or objects have fallen into the apparatus, the apparatus has been exposed to rain or moisture, does not operate normally, or has been dropped.



Warning

Unit

- To reduce the risk of fire, electric shock or product damage,
 - Do not expose this unit to rain, moisture, dripping or splashing.
 - Do not place objects filled with liquids, such as vases, on this unit.
 - Use only the recommended accessories.
 - Do not remove covers.
 - Do not repair this unit by yourself. Refer servicing to qualified service personnel.
 - Do not let metal objects fall inside this unit.
 - Do not place heavy items on this unit.

AC power supply cord

- The power plug is the disconnecting device. Install this unit so that the power plug can be unplugged from the socket outlet immediately.
- Ensure the earth pin on the power plug is securely connected to prevent electrical shock.
 - An apparatus with CLASS I construction shall be connected to a power socket outlet with a protective earthing connection.

Caution

Unit

- This unit utilizes a laser. Use of controls or adjustments or performance of procedures other than those specified herein may result in hazardous radiation exposure.
- Do not place sources of naked flames, such as lighted candles, on this unit.
- This unit may receive radio interference caused by mobile telephones during use. If such interference occurs, please increase separation between this unit and the mobile telephone.
- Keep magnetic items away from the product. Powerful magnets inside the top cover and disc tray part may damage debit cards, travel cards (transit passes), clocks and other objects.
- Do not touch the speaker diaphragm on the bottom of this unit. Doing so may deform the diaphragm, and as a result, sound may not be output correctly.

Placement



- Place this unit on an even surface.
- To reduce the risk of fire, electric shock or product damage,
 - Do not install or place this unit in a bookcase, built-in cabinet or in another confined space. Ensure this unit is well ventilated.
 - Do not obstruct this unit's ventilation openings with newspapers, tablecloths, curtains, and similar items.
 - Do not expose this unit to direct sunlight, high temperatures, high humidity, and excessive vibration.
- Do not lift or carry this unit by holding the top cover or front of this unit. Doing so may cause this unit to fall, resulting in personal injury or malfunction of this unit.

Battery

- Danger of explosion if battery is incorrectly replaced. Replace only with the type recommended by the manufacturer.
- Mishandling of batteries can cause electrolyte leakage and may cause a fire.
 - Remove the battery if you do not intend to use the remote control for a long period of time. Store in a cool, dark place.
 - Do not heat or expose to flame.
 - Do not leave the battery(ies) in a car exposed to direct sunlight for a long period of time with doors and windows closed.
 - Do not take apart or short circuit.
 - Do not recharge alkaline or manganese batteries.
 - Do not use batteries if the covering has been peeled off.

IMPORTANT SAFETY INSTRUCTIONS

- Do not mix old and new batteries or different types at the same time.
- When disposing of the batteries, please contact your local authorities or dealer and ask for the correct method of disposal.

	CAUTION RISK OF ELECTRIC SHOCK DO NOT OPEN	
CAUTION: TO REDUCE THE RISK OF ELECTRIC SHOCK, DO NOT REMOVE SCREWS. NO USER-SERVICEABLE PARTS INSIDE. REFER SERVICING TO QUALIFIED SERVICE PERSONNEL.		



The lightning flash with arrowhead symbol, within an equilateral triangle, is intended to alert the user to the presence of uninsulated "dangerous voltage" within the product's enclosure that may be of sufficient magnitude to constitute a risk of electric shock to persons.



The exclamation point within an equilateral triangle is intended to alert the user to the presence of important operating and maintenance (servicing) instructions in the literature accompanying the appliance.

Conforms to UL STD 60065.
Certified to CAN/CSA STD C22.2 No.60065.

THIS FOLLOWING APPLIES IN THE U.S.A. AND CANADA.

This device complies with Part 15 of FCC Rules and RSS-Gen of IC Rules.

Operation is subject to the following two conditions:

- (1) This device may not cause interference, and
- (2) this device must accept any interference, including interference that may cause undesired operation of this device.

FCC ID: ACJ-SC-C70

IC: 216A-SCC70

This transmitter must not be co-located or operated in conjunction with any other antenna or transmitter. This equipment complies with FCC/IC radiation exposure limits set forth for an uncontrolled environment and meets the FCC radio frequency (RF) Exposure Guidelines in Supplement C to OET65 and RSS-102 of the IC radio frequency (RF) Exposure rules. This equipment has very low levels of RF energy that is deemed to comply without maximum permissive exposure evaluation (MPE). But it is desirable that it should be installed and operated keeping the radiator at least 20 cm (7 7/8") or more away from person's body (excluding extremities: hands, wrists, feet and ankles).

The WLAN feature of this product shall exclusively be used inside buildings.

THE FOLLOWING APPLIES ONLY IN THE U.S.A.

FCC Note:

This equipment has been tested and found to comply with the limits for a Class B digital device, pursuant to Part 15 of the FCC Rules.

These limits are designed to provide reasonable protection against harmful interference in a residential installation. This equipment generates, uses and can radiate radio frequency energy and, if not installed and used in accordance with the instructions, may cause harmful interference to radio communications.

However, there is no guarantee that interference will not occur in a particular installation. If this equipment does cause harmful interference to radio or television reception, which can be determined by turning the equipment off and on, the user is encouraged to try to correct the interference by one or more of the following measures:

- Reorient or relocate the receiving antenna.
- Increase the separation between the equipment and receiver.
- Connect the equipment into an outlet on a circuit different from that to which the receiver is connected.
- Consult the dealer or an experienced radio/TV technician for help.

FCC Caution: To assure continued compliance, follow the attached installation instructions and use only shielded interface cables when connecting to peripheral devices.

Any unauthorized changes or modifications to this equipment would void the user's authority to operate this device.

THE FOLLOWING APPLIES ONLY IN CANADA.

CAN ICES-3(B)/NMB-3(B)



Information on Disposal in other Countries outside the European Union

This symbol is only valid in the European Union.

If you wish to discard this product, please contact your local authorities or dealer and ask for the correct method of disposal.

Installation

Turn off all the equipment before connection and read the appropriate operating instructions. Be sure to raise this unit when moving, and do not drag this unit.

- Do not carry this unit by holding the subwoofer of the bottom of this unit.

Notes on the speakers

These speakers do not have magnetic shielding. Do not place them near TV, PC or other equipment easily influenced by magnetism.

- Playing music at high volumes for a long period can cause damage to the system and shorten the life of the system.
- Decrease the volume in the following conditions to prevent damage.
 - When playing distorted sound
 - When adjusting the sound quality
 - When turning on/off this unit

For optimum sound effects

The quality and volume of the bass sound, sound localization performance, sound ambience, etc. will change depending on the installation location of this unit, listening position, room conditions, and other factors. Refer to the information below when installing the speakers.

Determining the installation location

- Place this unit on a flat safe surface.
- To minimize the gap in audio quality between left and right, install this unit in the way that acoustic conditions (reflection and absorption of sound) around this unit can be the same.

Adjusting the distances between this unit and the wall

- If you install this unit close to a wall or a corner, the bass sound will be more powerful, however, if the unit is too close to it, sound localization performance and sound ambience may deteriorate. If this occurs, adjust the distance between this unit and the wall.

Adjusting with the Space Tune function

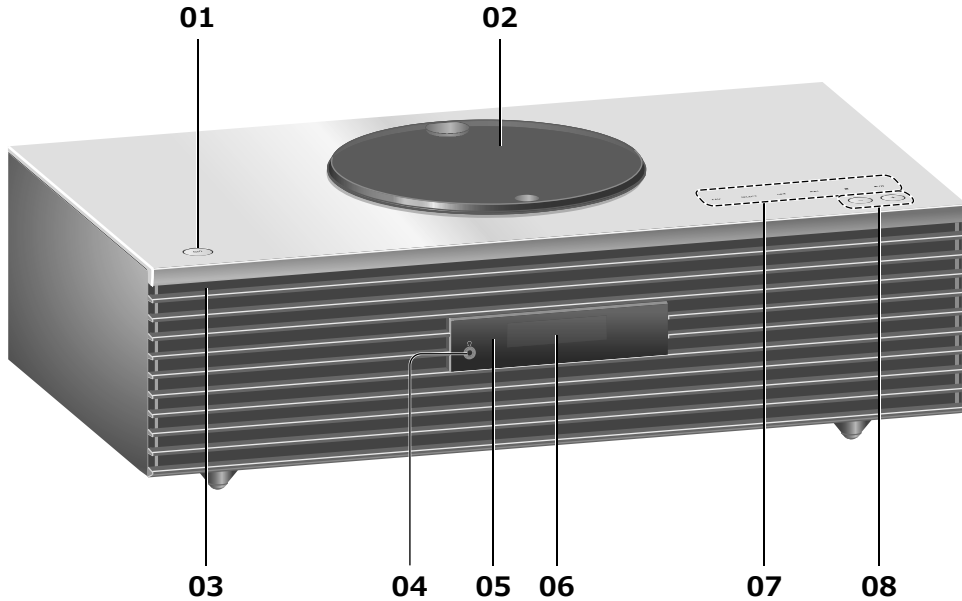
- You can adjust the sound quality according to the installation location.

Unit care

Pull out the AC power supply cord from the socket before maintenance. Clean this unit with a soft cloth.

- When dirt is heavy, wring a wet cloth tightly to wipe the dirt, and then wipe it with a soft cloth.
- Do not use solvents including benzene, thinner, alcohol, kitchen detergent, chemical wiper, etc. Doing so may cause the exterior case to be deformed or the coating to come off.

This unit (front)



01 Standby/on switch (⏻/⏻)

- Press to switch the unit from on to standby mode or vice versa. In standby mode, the unit is still consuming a small amount of power.

02 Top cover

- The top cover can slide to the both sides.
- The magnet is built-in to keep the top cover closing.
- Do not apply too much force to the top cover when sliding it. Doing so may cause malfunction.
- Do not leave the top cover open for a prolonged period. Doing so will cause the lens to become dirty.

(⇒ 17)

03 Power indicator

- Blue: The unit is on.
- Off: The unit is in standby mode.

04 Headphones jack

- When a plug is connected, the speakers do not output sound.
- Excessive sound pressure from earphones and headphones can cause hearing loss.
- Listening at full volume for long periods may damage the user's ears.

05 Remote control signal sensor

- Reception distance:
Within approx. 7 m (23 ft) directly in front
- Reception angle:
Approx. 30° left and right

06 Display

- Input source, clock, playback status, etc. are displayed.

07 Touch switches

- [FAV]:
Select the favorite radio station or playlist (FM / AM / Internet Radio / Spotify)
- [SELECT]:
Switch the input source
- [◀◀], [▶▶], [■], [▶/||]:
Playback operation buttons (e.g. "CD")

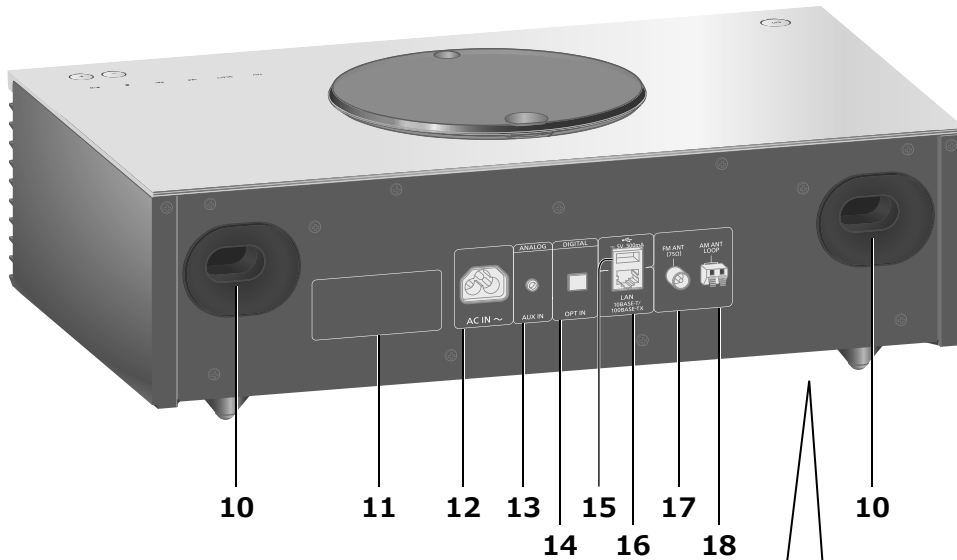
Stop	■
Pause	▶/ • Press again to resume.
Skip	◀◀ ▶▶
Search	Press and hold [◀◀] or [▶▶].

- Each time you press the switch, a beep sound will be heard.
- Do not put any objects on the top panel of this unit.

08 Adjust volume

- 0 (min) to 100 (max)

This unit (rear)



10 Bass reflex port

11 Product identification marking

- The model number is indicated.

12 AC IN terminal (⌚)

(⇒ 11)

13 AUX IN terminal

- You can connect a portable audio player, etc. with an analog audio cable (not supplied) and play back music.

14 Optical digital input terminal

- You can connect a DVD player, etc. with optical digital audio cable (not supplied) and play back music.
- The digital audio input terminal of this unit can only detect the following linear PCM signals. For details, refer to the operating instructions of the connected device.
 - Sampling frequency: 32/44.1/48/88.2/96 kHz
 - Number of quantization bits: 16/24 bit

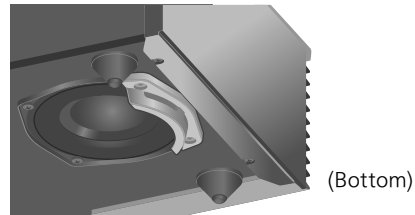
15 USB-A terminal DC 5 V 500 mA

- You can connect a USB device to the unit and play back music stored on the USB device.

16 LAN terminal

(⇒ 12)

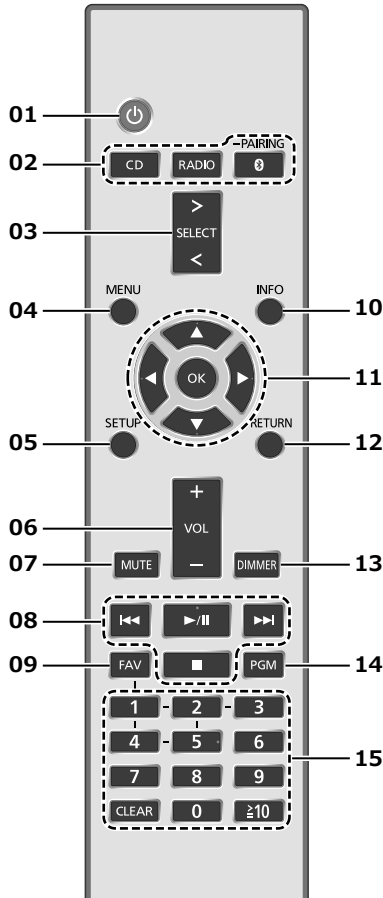
09 Subwoofer



- Do not install this unit on the rough surface. Doing so may cause the subwoofer to be damaged.
- Do not hold the subwoofer when carrying this unit.



Remote control



01 [⏻]: Standby/on switch

- Press to switch the unit from on to standby mode or vice versa. In standby mode, the unit is still consuming a small amount of power.

02 [CD]/[RADIO]/[⊗-PAIRING]: Select the device to be operated (⇒ 17, 18, 19)

03 [>SELECT<]: Switch the input source

04 [MENU]: Enter menu (⇒ 17, 18, 19)

05 [SETUP]: Enter setup menu

06 [+VOL-]: Adjust the volume

- 0 (min) to 100 (max)

07 [MUTE]: Mute the sound

- Press [MUTE] again to cancel. "MUTE" is also cancelled when you adjust the volume or when you turn the unit to standby.

08 Playback operation buttons

09 [FAV]: Select the favorite radio station or playlist (FM / AM / Internet Radio / Spotify).

- You can register up to 5 favorite stations. To register, press and hold [FAV] while the favorite station or playlist is played back, select the number to register and then press [OK].

10 [INFO]: View content information

- Press this button to display the track, artist, and album names, file type, sampling frequency, and other information. (The information varies depending on the input source.)

11 [▲], [▼], [◀], [▶]/[OK]: Selection/OK

12 [RETURN]: Return to the previous display

13 [DIMMER]: Adjust the brightness of the display, etc.

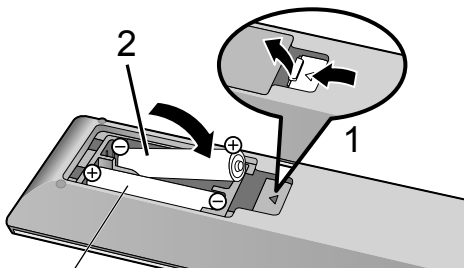
- When the display is turned off, it will light up for a few seconds only when you operate this unit. Before the display turns off, "Display Off" will be displayed for a few seconds.
- Press repeatedly to switch the brightness.

14 [PGM]: Set the program function

15 Numeric buttons, etc.

- To select a 2-digit number
Example:
16: [≥10] > [1] > [6]
- To select a 4-digit number
Example:
1234: [≥10] > [≥10] > [≥10] > [1] > [2] > [3] > [4]
- [CLEAR]: Clear the entered value.

■ Using the remote control

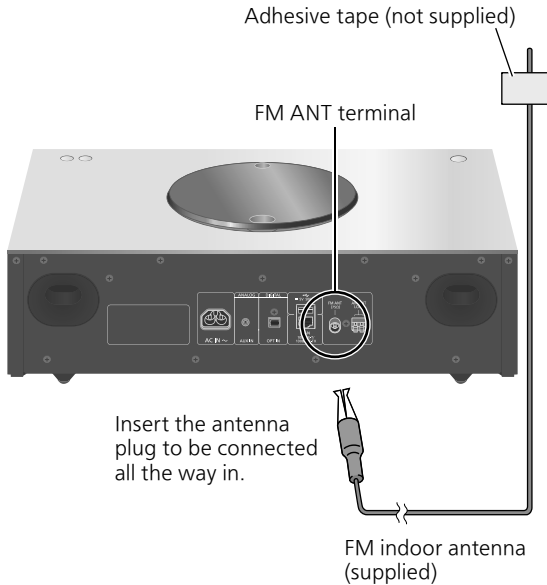


R03/LR03, AAA
(Alkaline or manganese batteries)

Note

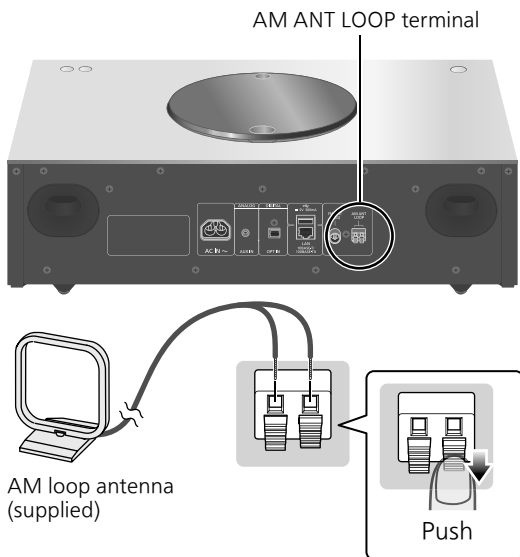
- Insert the battery so the terminals (⊕ and ⊖) match those in the remote control.
- Point it at the remote control signal sensor on this unit. (⇒ 8)
- Keep the batteries out of reach of children to prevent swallowing.

FM antenna connection

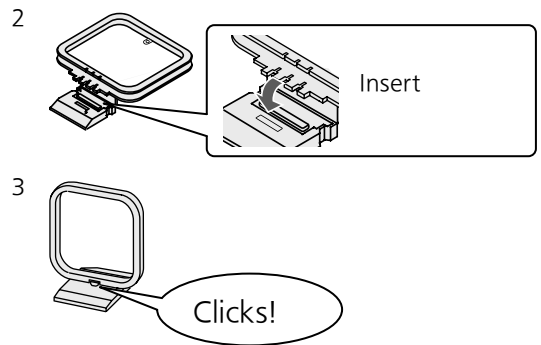
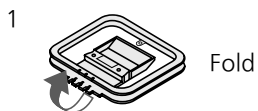


- Tape the antenna to a wall or column at the position with the least amount of interference.

AM loop antenna connection



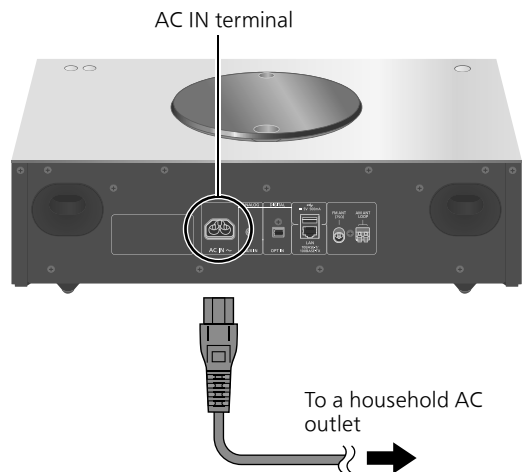
How to assemble



- Install the antenna at the position with the least amount of interference.

AC power supply cord connection

Connect only after all other connections are completed.



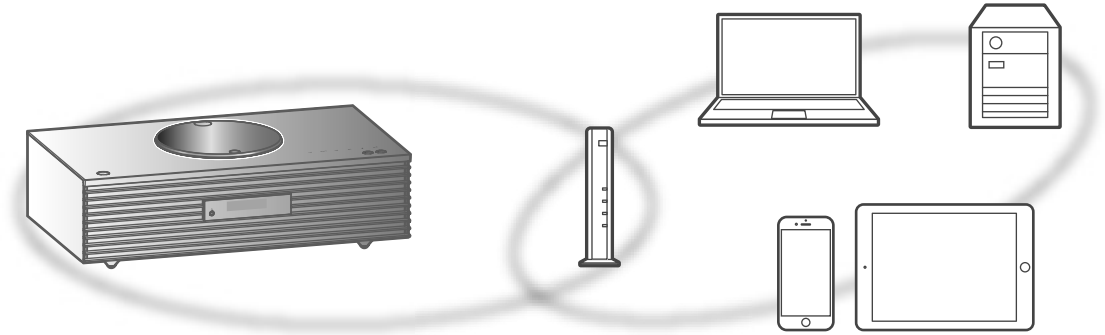
- Use only the supplied AC power supply cord.
- Do not connect the AC power supply cord until all other connections are complete.
- Insert the plugs of the cables to be connected all the way in.
- Do not bend cables at sharp angles.
- Wireless LAN (Wi-Fi®) setting may start when this unit is turned on. If you stop the Wi-Fi setting, select "Off" in "Wi-Fi Setup" screen. Select "On" to keep the Wi-Fi setting. (⇒ 13)

Note

- This unit consumes a small amount of AC power (⇒ 21) even when the unit is in standby mode. Remove the plug from the main electrical outlet if you will not be using the unit for an extended period of time. Place the unit so the plug can be easily removed.

Network settings

You can stream music from an iOS device (iPhone/iPad/iPod), an Android™ device or a PC (Mac/Windows) to this unit by using the AirPlay or DLNA feature. To use these features, this unit must join the same network as the AirPlay compatible device or the DLNA compatible device.

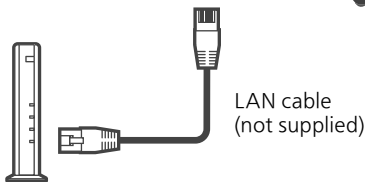


This unit can be connected to a router using a LAN cable or built-in Wi-Fi®. For a stable connection to the network, a wired LAN connection is recommended.

Note


- If you try to change the network settings immediately after turning on this unit, it may take some time until the network setup screen is displayed.
- If “Firmware update is available” is displayed after the network connection is set up, the firmware for this unit is available.
 - For the update information, refer to the following website.
www.technics.com/support/firmware/

Wired LAN connection



Broadband router, etc.

3 Connect the AC power supply cord to this unit, and press [⏻]. (⇒ 11)

- When the connection is established, “” is displayed.

Note

- While the AC power supply cord is disconnected, the LAN cable must be connected or disconnected.
- Use category 7 or above straight LAN cables (STP) when connecting to peripheral devices.
- Inserting any cable other than a LAN cable in the LAN port can damage the unit.
- When a LAN cable is connected, the Wi-Fi function may be disabled.

1 Disconnect the AC power supply cord.

2 Connect this unit to a broadband router, etc. using a LAN cable.

Wireless LAN connection

■ Preparation

- ① Disconnect the AC power supply cord.
- ② Disconnect the LAN cable.
- ③ Enable the 2.4 GHz frequency band on the wireless router.
- ④ Place this unit as close to the wireless router as possible.
- ⑤ Connect the AC power supply cord to this unit. (⇒ 11)

Note

- The setting will be cancelled after the set time limit. In that case, try the setting again.
- To cancel this setting in the middle, press [■] or turn the unit to standby mode.

■ Settings for the first time

1 Press [⏻] to turn this unit on.

- “Wi-Fi Setup” is displayed.

2 Press [▲], [▼] to select “On” and then press [OK].

- “WAC Mode for iOS” automatically starts.

3 (For “WAC Mode for iOS”)

Proceed to step 2 of “Using the WAC (Wireless Accessory Configuration)”
(⇒ 14).

(For other network setting method)

Choose a network setting method.

Note

- When this unit is switched to standby mode and turned on before the Wi-Fi setting is complete, “Wi-Fi Setup” is displayed. Perform the Wi-Fi setting or select “Off”.

■ Choose a network setting method

Are you using an iPod touch/iPhone/iPad?

↓ Yes

Using the WAC (Wireless Accessory Configuration) (⇒ 14)

↓ No

Does your wireless network router support WPS (Wi-Fi Protected Setup™)?

↓ Yes

(WPS button)

Using the WPS button (⇒ 14)

(WPS PIN code)

Using the WPS PIN code (⇒ 15)

↓ No

Are you using an Android device?

↓ Yes

Using “Technics Music App” (⇒ 15)

↓ No

Using an internet browser (⇒ 16)

■ Settings using [SETUP] menu

1 Press [SETUP].

2 Press [▲], [▼] repeatedly to select “Network” and then press [OK].

- When “Wi-Fi” screen is displayed, press [OK].

3 Press [▲], [▼] to select “On” and then press [OK]. (The wireless LAN function is enabled.)

4 Choose a network setting method.

■ Using the WAC (Wireless Accessory Configuration)

“WAC Mode for iOS”

You can send its Wi-Fi configuration to this unit using an iPhone/iPad/iPod touch.

- Supported devices:
iPhone/iPad/iPod touch (iOS version 7.0 or later)
- The following explanations are based on an iPhone.
- Make sure your iPhone is connected to your home wireless network beforehand.
- This unit uses the 2.4 GHz frequency band only. Check your iPhone is connected using 2.4 GHz band.

1 Press [▲], [▼] on the remote control to select “WAC Mode for iOS” and then press [OK].

- “Setting” is displayed.

2 Go to Wi-Fi settings on your iPhone.

3 Select “Technics SC-C70 *****” under the “SET UP NEW AIRPLAY SPEAKER...” on your iPhone.

- “*****” stands for a character that is unique to each set.


4 The “AirPlay Setup” screen appears on your iPhone.

- This unit will be displayed as “Technics SC-C70 *****”. To change the name, enter a new name to replace the existing one. You can also do the renaming after the network connection is set up.
- You can set a password for this unit under “SPEAKER PASSWORD”. (You will need this password if you make network settings by internet browser next time.)

5 Select “Next” to apply the settings.

- “Linking” is displayed.
- When the connection is established, “Success” is displayed.
 - “Fail” may be displayed if the connection was not complete. Try this method again from [SETUP] menu. If “Fail” is still displayed, try other methods (⇒ 13).

6 Press [OK] on the remote control to exit the setting.

- “” is displayed.

Note

- Mac (OS X 10.9 or later, with AirPort Utility 6.3.1. or later) also supports the WAC (Wireless Accessory Configuration).

■ Using the WPS button

“WPS Push”

If your wireless router supports WPS, you can set up a connection by pressing the WPS button.

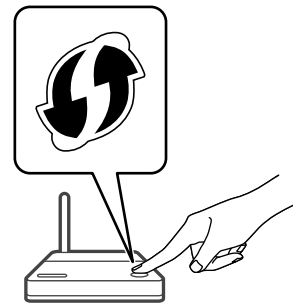
- A compatible wireless router may have the WPS identifier mark.

1 Press [▲], [▼] on the remote control to select “WPS Push” and then press [OK].

- “WPS” is displayed. Complete step 2 within 2 minutes.


2 After “WPS” is displayed, press the WPS button on the wireless router.

Example:



- “Linking” is displayed.
- When the connection is established, “Success” is displayed.
 - “Fail” may be displayed if the connection was not complete. Try this method again from [SETUP] menu. If “Fail” is still displayed, try other methods (⇒ 13).

3 Press [OK] on the remote control to exit the setting.

- “” is displayed.

■ Using the WPS PIN code "WPS PIN"

If your wireless router supports WPS, you can set up a connection by entering the WPS PIN code.

- For details on how to enter the PIN code, refer to the operating instructions of the wireless router.

1 Press [▲], [▼] on the remote control to select "WPS PIN" and then press [OK].

- The PIN code is displayed. Complete step 2 within 2 minutes.

2 Enter the PIN code into the wireless router from PC, etc.

- "Linking" is displayed.
- When the connection is established, "Success" is displayed.
 - "Fail" may be displayed if the connection was not complete. Try this method again from [SETUP] menu. If "Fail" is still displayed, try other methods (⇒ 13).

3 Press [OK] on the remote control to exit the setting.

- "📶" is displayed.

Note

- Depending on a router, other connected devices may temporarily lose their connection.
- For details, refer to the operating instructions of the wireless router.

■ Using "Technics Music App" "Setup from Browser"

If you install the dedicated app "Technics Music App" (free of charge) on your Android device, you can set up a connection using the application.

- If you're using an Android device, download the app at Google Play™.
- Check the password for your home wireless network.
- Make sure your Android device is connected to your home wireless network beforehand.
- This unit uses the 2.4 GHz frequency band only. Check your Android device is connected using 2.4 GHz band.

1 Press [▲], [▼] on the remote control to select "Setup from Browser" and then press [OK].

- "Setting" is displayed.

2 Start "Technics Music App" on the Android device.

3 Select "🔑" and go to Wi-Fi settings.

4 Enter the password for your home wireless network.

5 Select "Next" to apply the settings.

- "Linking" is displayed.
- When the connection is established, "Success" is displayed.
 - "Fail" may be displayed if the connection was not complete. Try this method again from [SETUP] menu. If "Fail" is still displayed, try other methods (⇒ 13).
- Depending on the device, the connection complete screen may not be displayed.

6 Make sure to connect your Android device back to your home wireless network.

7 Press [OK] on the remote control to exit the setting.

- "📶" is displayed.

■ Using an internet browser

“Setup from Browser”

You can access this unit’s network settings from the internet browser on iOS device (iOS version 6.1.6 or earlier), Android device, PC, etc.

- This unit uses the 2.4 GHz frequency band only. Check the device can be connected using 2.4 GHz band.
- The following explanations are based on an Android device.

1 Press [▲], [▼] on the remote control to select “Setup from Browser” and then press [OK].

- “Setting” is displayed.

2 Go to Wi-Fi settings on your compatible device and select “00 Setup *****” to connect to this unit.

- “*****” stands for a character that is unique to each set.

3 Start the internet browser and type “http://192.168.1.12/” into the URL address field and display the page.

- Examples of internet browsers
 - iOS device/Mac: Safari
 - Android device: Google Chrome™
 - PC: Windows Internet Explorer
- If the page is not displayed, refer to the following website.
www.technics.com/support/

4 Select “Search wireless network”.


5 Select your home wireless network name (Network name (SSID)) and type the password for this network.

6 Select “JOIN” to apply the settings.

- “Linking” is displayed.
- When the connection is established, “Success” is displayed.
 - “Fail” may be displayed if the connection was not complete. Try this method again from [SETUP] menu. If “Fail” is still displayed, try other methods (⇒ 13).
- Depending on the device, the connection complete screen may not be displayed.

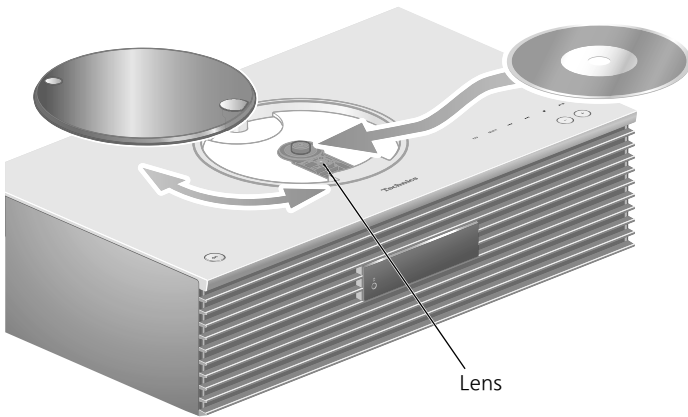
7 Make sure to connect your compatible device back to your home wireless network.

8 Press [OK] on the remote control to exit the setting.

- “” is displayed.

Note

- Enable JavaScript and Cookies in your browser settings.
- If known by a third party, the password will be at risk of being used for fraud. Manage your password securely with your responsibility. Panasonic does not accept any responsibility for damage caused by fraud.



1 Press [⏻] to turn this unit on.

2 Press [CD].

3 Open the top cover with a sliding motion and then insert the CD.

- The top cover can slide to the both sides.
- Place the CD with its label facing up, and push the center of the CD until a clicking sound is heard.

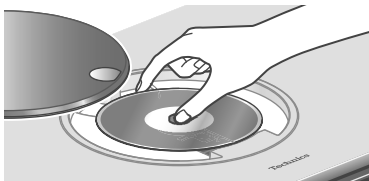
4 Close the top cover with a sliding motion.

- This unit cannot play back the CD while the top cover is open.

5 Press [▶/||].

■ **To eject the CD**

- ① Open the top cover with a sliding motion.
- ② Eject the CD.



- Be careful not to hit the CD with the top cover.
- Eject the CD after the CD has stopped turning.

Note

- Be careful not to get your finger caught in the top cover when opening/closing it.
- Be careful not to touch the lens with your fingers.
- The lens lights when the following operations are performed with no CD inserted. This is not a malfunction.
 - When turning the power on
 - When selecting "CD" as the input source
 - When opening and closing the top cover

■ **Repeat Playback/Random repeat playback**

- ① Press [MENU].
 - ② Press [▲], [▼] repeatedly to select "Repeat"/"Random" and then press [OK].
 - ③ Press [▲], [▼] repeatedly to an item and then press [OK].
- During random playback, you cannot skip to the previous track.

■ **Program playback**

- ① Press [PGM] in the stop mode.
 - "Program Mode" screen is displayed.
 - ② Press the numeric buttons to select tracks.
 - Repeat this step to make further selections.
 - ③ Press [▶/||] to start playback.
- Press [◀] or [▶] in the stop mode to check the programmed order.
 - Press [CLEAR] in the stop mode to clear the last track.
 - Press [PGM] in the stop mode to cancel the program mode, and the program memory will be stored.
 - Press [■] in the stop mode and select "Yes" to cancel the program mode. (The program memory will be cleared.)

Note

- The program memory is cleared when replacing the CD.
- The program mode is cancelled when the random repeat playback is set.

Storing FM/AM stations

You can preset up to 30 channels for FM and 15 channel for AM.

- A station previously stored is overwritten when another station is selected for the same channel by presetting.

1 Press [RADIO] repeatedly to select "FM".

2 Press [MENU].

3 Press [▲], [▼] repeatedly to select "Auto Preset" and then press [OK].

4 Press [▲], [▼] to select an item and then press [OK].

Lowest:

To begin the auto preset with the lowest frequency (FM 87.50/87.90, AM 520).

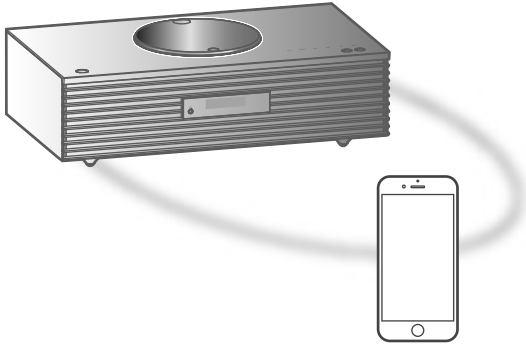
Current:

To begin the auto preset with the current frequency.

- The tuner starts to preset all the stations it can receive into the channels in ascending order.
- The factory default is "Lowest".

■ To listen to preset FM/AM channel

- ① Press [MENU].
- ② Press [▲], [▼] repeatedly to select "Tuning Mode" and then press [OK].
- ③ Press [▲], [▼] to select "Preset" and then press [OK].
- ④ Press [◀◀], [▶▶] or numeric buttons to select the channel.



Bluetooth® device

Pairing a Bluetooth® device

- Turn on the Bluetooth® feature of the device and place the device near this unit.
- If a Bluetooth® device is already connected, disconnect it.

1 Press [Ⓜ-PAIRING].

- When “Pairing” is indicated on the display, proceed to step 5.

2 Press [MENU].

3 Press [▲], [▼] repeatedly to select “Pairing” and then press [OK].

4 Press [▲], [▼] to select “Yes” and then press [OK].

- “Pairing” is displayed, and this unit waits for registering.

5 Select “SC-C70” from the Bluetooth® device’s menu.

- The name of the connected device is indicated on the display.
- The MAC address “*****” (“*****” stands for a character that is unique to each set.) may be displayed before “SC-C70” is displayed.

Note

- You can also enter pairing mode by pressing and holding [Ⓜ-PAIRING] when the input source is “Bluetooth”.
- If prompted for the passkey, input “0000”.
- You can register up to 8 devices with this unit. If a 9th device is paired, the device that has not been used the longest will be replaced.

Listening to music stored on a Bluetooth® device

1 Press [Ⓜ-PAIRING].

- “Ready” or “Pairing” is indicated on the display.

2 Select “SC-C70” from the Bluetooth® device’s menu.

- The name of the connected device is indicated on the display.

3 Start playback on the Bluetooth® device.

Note

- Refer to the operating instructions of the Bluetooth® device for details.
- This unit can only be connected to one device at a time.
- When “Bluetooth” is selected as the input source, this unit will automatically try and connect to the last connected Bluetooth® device. (“Linking” is displayed during this process.)

Disconnecting a Bluetooth® device


1 Press [MENU].

2 Press [▲], [▼] repeatedly to select “Disconnect?” and then press [OK].

3 Press [▲], [▼] to select “Yes” and then press [OK].

Note

- The Bluetooth® device will be disconnected if a different audio source is selected.

<div style="display: flex; justify-content: space-around; align-items: center;">   </div> <p>The Wi-Fi CERTIFIED™ Logo is a certification mark of Wi-Fi Alliance®.</p> <p>The Wi-Fi Protected Setup™ Logo is a certification mark of Wi-Fi Alliance®.</p> <p>“Wi-Fi®” is a registered trademark of Wi-Fi Alliance®.</p> <p>“Wi-Fi Protected Setup™”, “WPA™”, and “WPA2™” are trademarks of Wi-Fi Alliance®.</p>
<div style="text-align: center;">  </div> <p>AirPlay, iPad, iPhone, and iPod touch are trademarks of Apple Inc., registered in the U.S. and other countries.</p>
<p>Android and Google Play are trademarks of Google Inc.</p>
<p>Windows is a trademark or a registered trademark of Microsoft Corporation in the United States and other countries.</p>
<p>Windows Media and the Windows logo are trademarks or registered trademarks of Microsoft Corporation in the United States and/or other countries. This product is protected by certain intellectual property rights of Microsoft Corporation and third parties. Use or distribution of such technology outside of this product is prohibited without a license from Microsoft or an authorized Microsoft subsidiary and third parties.</p>
<p>Mac and OS X are trademarks of Apple Inc., registered in the U.S. and other countries.</p>
<p>The Bluetooth® word mark and logos are registered trademarks owned by the Bluetooth SIG, Inc. and any use of such marks by Panasonic Corporation is under license. Other trademarks and trade names are those of their respective owners.</p>
<p>DLNA, the DLNA Logo and DLNA CERTIFIED are trademarks, service marks, or certification marks of the Digital Living Network Alliance.</p>
<p>DSD is a trademark of Sony Corporation.</p>

<p>FLAC Decoder</p> <p>Copyright (C) 2000, 2001, 2002, 2003, 2004, 2005, 2006, 2007, 2008, 2009 Josh Coalson</p> <p>Redistribution and use in source and binary forms, with or without modification, are permitted provided that the following conditions are met:</p> <ul style="list-style-type: none"> - Redistributions of source code must retain the above copyright notice, this list of conditions and the following disclaimer. - Redistributions in binary form must reproduce the above copyright notice, this list of conditions and the following disclaimer in the documentation and/or other materials provided with the distribution. - Neither the name of the Xiph.org Foundation nor the names of its contributors may be used to endorse or promote products derived from this software without specific prior written permission. <p>THIS SOFTWARE IS PROVIDED BY THE COPYRIGHT HOLDERS AND CONTRIBUTORS “AS IS” AND ANY EXPRESS OR IMPLIED WARRANTIES, INCLUDING, BUT NOT LIMITED TO, THE IMPLIED WARRANTIES OF MERCHANTABILITY AND FITNESS FOR A PARTICULAR PURPOSE ARE DISCLAIMED. IN NO EVENT SHALL THE FOUNDATION OR CONTRIBUTORS BE LIABLE FOR ANY DIRECT, INDIRECT, INCIDENTAL, SPECIAL, EXEMPLARY, OR CONSEQUENTIAL DAMAGES (INCLUDING, BUT NOT LIMITED TO, PROCUREMENT OF SUBSTITUTE GOODS OR SERVICES; LOSS OF USE, DATA, OR PROFITS; OR BUSINESS INTERRUPTION) HOWEVER CAUSED AND ON ANY THEORY OF LIABILITY, WHETHER IN CONTRACT, STRICT LIABILITY, OR TORT (INCLUDING NEGLIGENCE OR OTHERWISE) ARISING IN ANY WAY OUT OF THE USE OF THIS SOFTWARE, EVEN IF ADVISED OF THE POSSIBILITY OF SUCH DAMAGE.</p>
<p>The Spotify software is subject to third party licenses found here: www.spotify.com/connect/third-party-licenses</p>

■ GENERAL

Power supply	AC 220 V to 240 V, 50/60 Hz
Power consumption	45 W
Power consumption in standby mode (Network Standby Off & No clock display)	0.15 W*1
Power consumption in standby mode (Network Standby On & No clock display)	2.0 W*1
Dimensions (W×H×D)	450 mm (17 ²³ / ₃₂ ") × 143 mm (5 ⁵ / ₈ ") × 280 mm (11 ¹ / ₃₂ ")
Mass	Approx. 7.8 kg (17.2 lbs)
Operating temperature range	0 °C to 40 °C (+32 °F to +104 °F)
Operating humidity range	35 % to 80 % RH (no condensation)

*1: Wireless Network Standby (Wired LAN not connected & No clock display)

■ AMPLIFIER SECTION

Output power	Front speaker (L/R): 30 W + 30 W (1 kHz, T.H.D. 1.0 %, 6 Ω, 20 kHz LPF) Subwoofer: 40 W (70 Hz, T.H.D. 1.0 %, 4 Ω, 20 kHz LPF)
FTC output power	Front speaker (L/R): 20 W + 20 W (1 kHz, T.H.D. 1.0 %, 6 Ω, 20 kHz LPF) Subwoofer: 35 W (70 Hz, T.H.D. 1.0 %, 4 Ω, 20 kHz LPF)
Input sensitivity/ input impedance	AUX (NORMAL): 575 mVrms/16 kΩ AUX (HIGH): 290 mVrms/16 kΩ

■ TUNER SECTION

Frequency Modulation (FM)

Preset memory	30 stations
Frequency range	87.90 MHz to 107.90 MHz (200 kHz step) 87.50 MHz to 108.00 MHz (100 kHz step)
Antenna terminals	75 Ω (unbalanced)

Amplitude Modulation AM

Preset memory	15 stations
Frequency range	520 KHz to 1710 MHz (10 kHz step)

■ DISC SECTION

Playable Disc (8 cm or 12 cm)	CD, CD-R, CD-RW
Pickup	
Wavelength	790 nm (CD)
Laser power	CLASS 1
Format	CD-DA

■ SPEAKER SECTION

Front speaker (L/R)

Type	2 way, 2 speaker (Closed)
Woofer	8 cm (3 ¹ / ₈ ") × 1/ch, Cone type
Tweeter	2 cm (³ / ₄ ") × 1/ch, Dome type

Subwoofer

Type	1 way, 1 speaker (Bass reflex)
Sub woofer	12 cm (4 ³ / ₄ ") × 1, Cone type

Specifications (Continued)

■ Bluetooth® SECTION

Bluetooth® system specification	Bluetooth® Ver.2.1+EDR
Wireless equipment classification	Class 2 (2.5 mW)
Supported profiles	A2DP, AVRCP
Supported codec	AAC, SBC
Frequency band	2.4 GHz band FH-SS
Operating distance	Approx. 10 m Line of sight*2

*2: Prospective communication distance
 Measurement environment:
 Temperature 25 °C/ Height 1.0 m
 Measure in "Mode1"

■ TERMINALS SECTION

Headphones Jack	Stereo, φ3.5 mm
USB	REAR USB Type A Connector
Support Memory Capacity	2 TB (max)
Maximum number of folders (albums)	800
Maximum number of files (songs)	8000
File system	FAT16, FAT32
USB port power	DC OUT 5 V 0.5 A (max)
Ethernet interface	LAN (100BASE-TX/10BASE-T)
AUX Input	Stereo, φ3.5 mm Jack
Digital Input	Optical digital input (Optical terminal)
Format support	LPCM

■ FORMAT SECTION

USB-A

USB Standard	USB 2.0 high-speed USB Mass Storage class
--------------	--

Wi-Fi SECTION

Standard	IEEE802.11b / g / n
Frequency Band	2.4 GHz band (1 - 11 ch)
Security	WPA2™, Mixed mode WPA2™/ WPA™
Encryption Type	TKIP / AES
Authentication type	PSK WEP (64 bit/128 bit)
WPS version	Version 2.0

■ File format

This unit supports the following file formats.

- This unit does not support the playback of copy-protected music files.
- Playback of all files in formats supported by this unit is not guaranteed.
- Playback of a file in a format not supported by this unit may cause choppy audio or noise. In such cases, check to see if this unit supports the file format.
- This unit does not support VBR (Variable Bit Rate) playback.
- Some of the connected devices (servers) may be capable of converting files in formats not supported by this unit and output them. For details, refer to the operating instructions for your server.
- File information (sampling frequency, etc.) shown by this unit and playback software may differ from each other.

USB-A

File format	Extension	Sampling frequency	Bit rate / Number of quantization bits
MP3	.mp3	32/44.1/48 kHz	16 to 320 kbps
AAC	.m4a/.aac	32/44.1/48/88.2/96 kHz	16 to 320 kbps
WMA	.wma	32/44.1/48 kHz	16 to 320 kbps
WAV	.wav	32/44.1/48/88.2/96/176.4/192 kHz	16/24 bit
FLAC	.flac	32/44.1/48/88.2/96/176.4/192 kHz	16/24 bit
AIFF	.aiff	32/44.1/48/88.2/96/176.4/192 kHz	16/24 bit
ALAC	.m4a	32/44.1/48/88.2/96/176.4/192 kHz	16/24 bit
DSD	.dff/.dsf	2.8/5.6 MHz	

LAN (DLNA)*

File format	Extension	Sampling frequency	Bit rate / Number of quantization bits
MP3	.mp3	32/44.1/48 kHz	16 to 320 kbps
AAC	.m4a/.aac	32/44.1/48/88.2/96 kHz	16 to 320 kbps
WMA	.wma	32/44.1/48 kHz	16 to 320 kbps
WAV	.wav	32/44.1/48/88.2/96/176.4/192 kHz	16/24 bit
FLAC	.flac	32/44.1/48/88.2/96/176.4/192 kHz	16/24 bit
AIFF	.aiff	32/44.1/48/88.2/96/176.4/192 kHz	16/24 bit
ALAC	.m4a	32/44.1/48/88.2/96/176.4/192 kHz	16/24 bit
DSD	.dff/.dsf	2.8/5.6 MHz	

*: Whether or not each music file can be played back over your network is determined by the network server even if the format of the file is listed above. For example, if you are using Windows Media Player 11, not all music files on the PC are playable. You can play back only those added to the library of Windows Media Player 11.

Note

- Specifications are subject to change without notice.
- Mass and dimensions are approximate.

Limited Warranty (ONLY FOR U.S.A.)

Technics Products – Limited Warranty

Limited Warranty Coverage
(For USA Only)

If your product does not work properly because of a defect in materials or workmanship, Panasonic Corporation of North America (referred to as "the warrantor") will, for the length of the period indicated on the chart below, which starts with the date of original purchase ("warranty period"), at its option either (a) repair your product with new or refurbished parts, (b) replace it with a new or a refurbished equivalent value product, or (c) refund your purchase price. The decision to repair, replace or refund will be made by the warrantor.

Product or Part Name	Parts	Labor
Technics Compact Stereo System	3 (three) years	3 (three) years
Technics Music Server		
Technics CD Stereo System		
Technics Turntable System		

During the "Labor" warranty period there will be no charge for labor. During the "Parts" warranty period, there will be no charge for parts. This Limited Warranty excludes both parts and labor for non-rechargeable batteries, antennas, and cosmetic parts (cabinet). This warranty only applies to products purchased and serviced in the United States. This warranty is extended only to the original purchaser of a new product which was not sold "as is".

Mail-In Service--Online Repair Request

Online Repair Request

To submit a new repair request and for quick repair status visit our Web Site at

<http://shop.panasonic.com/support>

When shipping the unit, carefully pack, include all supplied accessories listed in the Owner's Manual, and send it prepaid, adequately insured and packed well in a carton box. When shipping Lithium Ion batteries please visit our Web Site at <http://shop.panasonic.com/support> as Panasonic is committed to providing the most up to date information. Include a letter detailing the complaint, a return address and provide a daytime phone number where you can be reached. A valid registered receipt is required under the Limited Warranty.

IF REPAIR IS NEEDED DURING THE WARRANTY PERIOD, THE PURCHASER WILL BE REQUIRED TO FURNISH A SALES RECEIPT/PROOF OF PURCHASE INDICATING DATE OF PURCHASE, AMOUNT PAID AND PLACE OF PURCHASE. CUSTOMER WILL BE CHARGED FOR THE REPAIR OF ANY UNIT RECEIVED WITHOUT SUCH PROOF OF PURCHASE.

Limited Warranty Limits and Exclusions

This warranty ONLY COVERS failures due to defects in materials or workmanship, and DOES NOT COVER normal wear and tear or cosmetic damage. The warranty ALSO DOES NOT COVER damages which occurred in shipment, or failures which are caused by products not supplied by the warrantor, or failures which result from accidents, misuse, abuse, neglect, mishandling, misapplication, alteration, faulty installation, set-up adjustments, misadjustment of consumer controls, improper maintenance, power line surge, lightning damage, modification, introduction of sand, humidity or liquids, commercial use such as hotel, office, restaurant, or other business or rental use of the product, or service by anyone other than a Factory Service Center or other Authorized Servicer, or damage that is attributable to acts of God.

THERE ARE NO EXPRESS WARRANTIES EXCEPT AS LISTED

The model number and serial number of this product can be found on either the back or the bottom of the unit. Please note them in the space provided below and keep for future reference.

MODEL NUMBER SC-C70 _____

SERIAL NUMBER _____

UNDER "LIMITED WARRANTY COVERAGE".

THE WARRANTOR IS NOT LIABLE FOR INCIDENTAL OR CONSEQUENTIAL DAMAGES RESULTING FROM THE USE OF THIS PRODUCT, OR ARISING OUT OF ANY BREACH OF THIS WARRANTY.

(As examples, this excludes damages for lost time, travel to and from the servicer, loss of or damage to media or images, data or other memory or recorded content. The items listed are not exclusive, but for illustration only.)

ALL EXPRESS AND IMPLIED WARRANTIES, INCLUDING THE WARRANTY OF MERCHANTABILITY, ARE LIMITED TO THE PERIOD OF THE LIMITED WARRANTY.

Some states do not allow the exclusion or limitation of incidental or consequential damages, or limitations on how long an implied warranty lasts, so the exclusions may not apply to you.

This warranty gives you specific legal rights and you may also have other rights which vary from state to state. If a problem with this product develops during or after the warranty period, you may contact your dealer or Service Center. If the problem is not handled to your satisfaction, then write to:

Consumer Affairs Department
Panasonic Corporation of North America
661 Independence Pkwy
Chesapeake, VA 23320

PARTS AND SERVICE, WHICH ARE NOT COVERED BY THIS LIMITED WARRANTY, ARE YOUR RESPONSIBILITY.

**Shop
Accessories!**

for all your Technics gear

Go to

<http://shop.panasonic.com/support>

Get everything you need to get the most out of your Technics products

Accessories & Parts for your Camera, Phone, A/V products, TV, Computers & Networking, Personal Care, Home Appliances, Headphones, Batteries, Backup Chargers & more...

Customer Services Directory

For Product Information, Operating Assistance, Parts, Owner's Manuals, Dealer and Service info go to <http://shop.panasonic.com/support>

For the hearing or speech impaired TTY: 1- 877-833-8855

As of July 2017

User memo:

DATE OF PURCHASE _____

DEALER NAME _____

DEALER ADDRESS _____

TELEPHONE NUMBER _____

Limited Warranty (ONLY FOR CANADA)

Panasonic Canada Inc.

5770 Ambler Drive, Mississauga, Ontario L4W 2T3

TECHNICS PRODUCT – LIMITED WARRANTY

Panasonic Canada Inc. warrants this product to be free from defects in material and workmanship under normal use and for a period as stated below from the date of original purchase agrees to, at its option either (a) repair your product with new or refurbished parts, (b) replace it with a new or a refurbished equivalent value product, or (c) refund your purchase price. The decision to repair, replace or refund will be made by Panasonic Canada Inc.

Technics Compact Stereo System	3 (three) years parts and labour
Technics Music Server	3 (three) years parts and labour
Technics CD Stereo System	3 (three) years parts and labour
Technics Turntable System	3 (three) years parts and labour

This warranty is given only to the original purchaser, or the person for whom it was purchased as a gift, of a Technics brand product mentioned above sold by an authorized Panasonic dealer in Canada and purchased and used in Canada, which product was not sold "as is", and which product was delivered to you in new condition in the original packaging.

IN ORDER TO BE ELIGIBLE TO RECEIVE WARRANTY SERVICE HEREUNDER, A PURCHASE RECEIPT OR OTHER PROOF OF DATE OF ORIGINAL PURCHASE, SHOWING AMOUNT PAID AND PLACE OF PURCHASE IS REQUIRED

LIMITATIONS AND EXCLUSIONS

This warranty ONLY COVERS failures due to defects in materials or workmanship, and DOES NOT COVER normal wear and tear or cosmetic damage. The warranty ALSO DOES NOT COVER damages which occurred in shipment, or failures which are caused by products not supplied by Panasonic Canada Inc., or failures which result from accidents, misuse, abuse, neglect, mishandling, misapplication, alteration, faulty installation, set-up adjustments, misadjustment of consumer controls, improper maintenance, power line surge, lightning damage, modification, introduction of sand, humidity or liquids, commercial use such as hotel, office, restaurant, or other business or rental use of the product, or service by anyone other than an Authorized Servicer, or damage that is attributable to acts of God.

Dry cell batteries are also excluded from coverage under this warranty.

THIS EXPRESS, LIMITED WARRANTY IS IN LIEU OF ALL OTHER WARRANTIES, EXPRESS OR IMPLIED, INCLUDING ANY IMPLIED WARRANTIES OF MERCHANTABILITY AND FITNESS FOR A PARTICULAR PURPOSE. IN NO EVENT WILL PANASONIC CANADA INC. BE LIABLE FOR ANY SPECIAL, INDIRECT OR CONSEQUENTIAL DAMAGES RESULTING FROM THE USE OF THIS PRODUCT OR ARISING OUT OF ANY BREACH OF ANY EXPRESS OR IMPLIED WARRANTY. (As examples, this warranty excludes damages for lost time, travel to and from the Authorized Servicer, loss of or damage to media or images, data or other memory or recorded content. This list of items is not exhaustive, but for illustration only.)

In certain instances, some jurisdictions do not allow the exclusion or limitation of incidental or consequential damages, or the exclusion of implied warranties, so the above limitations and exclusions may not be applicable. This warranty gives you specific legal rights and you may have other rights which vary depending on your province or territory.

WARRANTY SERVICE

For product operation, repairs and information assistance, please visit our Support page on:

www.panasonic.ca/english/support

IF YOU SHIP THE PRODUCT TO A SERVICENTRE

Carefully pack and send prepaid, adequately insured and preferably in the original carton.
Include details of the defect claimed, and proof of date of original purchase.

CE QUI SUIT NE S'APPLIQUE QU'AUX ÉTATS-UNIS ET AU CANADA.

Cet appareil est conforme à la section 15 de la réglementation de la FCC et à la section CNR-Gen de la réglementation IC.

Son utilisation est soumise aux deux conditions suivantes :

(1) cet appareil ne doit pas provoquer d'interférence et

(2) cet appareil doit tolérer les différentes interférences reçues, y compris les interférences susceptibles de provoquer un dysfonctionnement.

FCC ID : ACJ-SC-C70

IC : 216A-SCC70

Cet émetteur ne doit pas être placé à proximité d'une autre antenne ou d'un autre émetteur, ni être utilisé de pair avec de tels autres appareils.

Cet équipement est conforme aux limites d'exposition aux radiations FCC/IC établies pour un environnement non contrôlé et se conforme aux exigences de conformité pour l'exposition aux RF IC, dans le supplément C, aux normes OET65 et CNR-102. Cet appareil présente de très faibles niveaux d'énergie RF jugés conformes sans évaluation de l'exposition permise maximale (MPE). Mais il est souhaitable de l'installer et de l'utiliser à une distance d'au moins 20 cm (7 7/8 po) du corps (extrémités non comprises : mains, poignets, pieds et chevilles).

CE QUI SUIT NE S'APPLIQUE QU'AU CANADA.
CAN ICES-3(B)/NMB-3(B)

Panasonic Corporation of North America
Two Riverfront Plaza, Newark, NJ 07102-5490
<http://www.panasonic.com>

Panasonic Canada Inc.
5770 Ambler Drive,
Mississauga, Ontario,
L4W 2T3
www.panasonic.com