

# Panasonic®

## Owner's Manual Compact Stereo System

Model No. SC-HC57  
SC-HC37

ENGLISH

ESPAÑOL



Unless otherwise indicated, illustrations in this Owner's Manual are of SC-HC57.

Thank you for purchasing this product.  
For optimum performance and safety, please read these instructions carefully.  
Please keep this manual for future reference.

If you have any questions contact  
U.S.A. and Puerto Rico: 1-800-211-PANA (7262)  
Canada: 1-800-561-5505

### **Included Installation Instructions (⇒ 2, 6)**

**The installation should never be done by any other than a qualified installation specialist.**

Before commencing work, carefully read these installation instructions and the operating instructions to ensure that installation is performed correctly.

(Please keep these instructions. You may need them when maintaining or moving this unit.)

La referencia rápida en español se puede encontrar en la página 20-21.

P PC

RQT9633-P

# IMPORTANT SAFETY INSTRUCTIONS

Read these operating instructions carefully before using the unit. Follow the safety instructions on the unit and the applicable safety instructions listed below. Keep these operating instructions handy for future reference.

- 1 Read these instructions.
- 2 Keep these instructions.
- 3 Heed all warnings.
- 4 Follow all instructions.
- 5 Do not use this apparatus near water.
- 6 Clean only with dry cloth.
- 7 Do not block any ventilation openings. Install in accordance with the manufacturer's instructions.
- 8 Do not install near any heat sources such as radiators, heat registers, stoves, or other apparatus (including amplifiers) that produce heat.
- 9 Do not defeat the safety purpose of the polarized or grounding-type plug. A polarized plug has two blades with one wider than the other. A grounding-type plug has two blades and a third grounding prong. The wide blade or the third prong are provided for your safety. If the provided plug does not fit into your outlet, consult an electrician for replacement of the obsolete outlet.
- 10 Protect the power cord from being walked on or pinched particularly at plugs, convenience receptacles, and the point where they exit from the apparatus.
- 11 Only use attachments/accessories specified by the manufacturer.
- 12 Use only with the cart, stand, tripod, bracket, or table specified by the manufacturer, or sold with the apparatus. When a cart is used, use caution when moving the cart/apparatus combination to avoid injury from tip-over.
- 13 Unplug this apparatus during lightning storms or when unused for long periods of time.
- 14 Refer all servicing to qualified service personnel. Servicing is required when the apparatus has been damaged in any way, such as power-supply cord or plug is damaged, liquid has been spilled or objects have fallen into the apparatus, the apparatus has been exposed to rain or moisture, does not operate normally, or has been dropped.



## WARNING

### Unit

- To reduce the risk of fire, electric shock or product damage,
  - Do not expose this unit to rain, moisture, dripping or splashing.
  - Do not place objects filled with liquids, such as vases, on this unit.
  - Use only the recommended accessories.
  - Do not remove covers.
  - Do not repair this unit by yourself. Refer servicing to qualified service personnel.

### Power cord

- Install this unit so that the power cord can be unplugged from the socket outlet immediately if any problem occurs.

### Button-type battery (Lithium battery)

- Risk of fire, explosion and burns. Do not disassemble, heat above 60 °C (140 °F) or incinerate.

If any electrolyte should come into contact with your hands or clothes, wash it off thoroughly with water.  
If any electrolyte should come into contact with your eyes, never rub the eyes. Rinse eyes thoroughly with water, and then consult a doctor.

<For USA-California only>

This product contains a CR Coin Cell Lithium Battery which contains Perchlorate Material – special handling may apply.

See [www.dtsc.ca.gov/hazardouswaste/perchlorate](http://www.dtsc.ca.gov/hazardouswaste/perchlorate).

## CAUTION

### Unit

- This unit utilizes a laser. Use of controls or adjustments or performance of procedures other than those specified herein may result in hazardous radiation exposure.
- Do not place sources of naked flames, such as lighted candles, on this unit.

### Placement

- To reduce the risk of fire, electric shock or product damage,
  - Do not install or place this unit in a bookcase, built-in cabinet or in another confined space. Ensure this unit is well ventilated.
  - Do not obstruct this unit's ventilation openings with newspapers, tablecloths, curtains, and similar items.

### Button-type battery (Lithium battery)

- Danger of explosion if battery is incorrectly replaced. Replace only with the type recommended by the manufacturer.
- When disposing the batteries, please contact your local authorities or dealer and ask for the correct method of disposal.
- Keep out of reach of children.
- Insert with poles aligned.
- Mishandling of batteries can cause electrolyte leakage and may cause a fire.
  - Remove batteries if you do not intend to use the remote control for a long period of time. Store in a cool, dark place.
  - Do not heat or expose to flame.
  - Do not leave the battery(ies) in a car exposed to direct sunlight for a long period of time with doors and windows closed.
  - Do not touch the terminals (+ and –) with metal objects.
  - Do not recharge, disassemble, remodel, heat or throw into fire.

**THE FOLLOWING APPLIES ONLY IN THE U.S.A.**

**FCC Note:**

This equipment has been tested and found to comply with the limits for a Class B digital device, pursuant to Part 15 of the FCC Rules.

These limits are designed to provide reasonable protection against harmful interference in a residential installation. This equipment generates, uses and can radiate radio frequency energy and, if not installed and used in accordance with the instructions, may cause harmful interference to radio communications. However, there is no guarantee that interference will not occur in a particular installation. If this equipment does cause harmful interference to radio or television reception, which can be determined by turning the equipment off and on, the user is encouraged to try to correct the interference by one or more of the following measures:

- Reorient or relocate the receiving antenna.
- Increase the separation between the equipment and receiver.
- Connect the equipment into an outlet on a circuit different from that to which the receiver is connected.
- Consult the dealer or an experienced radio/TV technician for help.

Any unauthorized changes or modifications to this equipment would void the user's authority to operate this device.

This device complies with Part 15 of the FCC Rules. Operation is subject to the following two conditions:  
 (1) This device may not cause harmful interference, and  
 (2) this device must accept any interference received, including interference that may cause undesired operation.

Responsible Party:  
 Panasonic Corporation of North America  
 One Panasonic Way  
 Secaucus, NJ 07094

Support Contact:  
 Panasonic Consumer Electronics Company  
 Telephone No.: 1-800-211-PANA (7262)

	<b>CAUTION</b> RISK OF ELECTRIC SHOCK DO NOT OPEN	
CAUTION : TO REDUCE THE RISK OF ELECTRIC SHOCK, DO NOT REMOVE SCREWS. NO USER-SERVICEABLE PARTS INSIDE. REFER SERVICING TO QUALIFIED SERVICE PERSONNEL.		




The lightning flash with arrowhead symbol, within an equilateral triangle, is intended to alert the user to the presence of uninsulated "dangerous voltage" within the product's enclosure that may be of sufficient magnitude to constitute a risk of electric shock to persons.



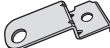
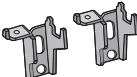
The exclamation point within an equilateral triangle is intended to alert the user to the presence of important operating and maintenance (servicing) instructions in the literature accompanying the appliance.

**Accessories**

Check the supplied accessories before using this unit.

- |   |  |
|---|--|
| <input type="checkbox"/> <b>1 Remote control (with a battery)</b><br>(N2QAYC000056) | <input type="checkbox"/> <b>1 FM indoor antenna</b><br>(RSAX0002)                  |
| <input type="checkbox"/> <b>1 AC power supply cord</b><br>(K2CB2YY00059)            |  |

**Wall mounting accessories**

- |   |   |
|---|---|
| <input type="checkbox"/> <b>1 Safety holder</b><br>(RGQ0660-K)                    | <input type="checkbox"/> <b>2 Wall mount brackets</b><br>(RMQX1082-K)             |
|  |  |
| <input type="checkbox"/> <b>1 Screw</b><br>(XTB3+8JFJK)                           |   |

(ONLY FOR CANADA)

The enclosed Canadian French label sheet corresponds to the English display on the top of the unit.



- Do not use AC power supply cord with other equipment.
- Product numbers provided in this Owner's Manual are correct as of December 2011. These may be subject to change.

**SC-HC57**

**THE FOLLOWING APPLIES IN THE U.S.A. AND CANADA**

This device complies with Part 15 of FCC Rules and RSS-Gen of IC Rules.

Operation is subject to the following two conditions:

- (1) This device may not cause interference, and
- (2) this device must accept any interference, including interference that may cause undesired operation of this device.

This transmitter must not be co-located or operated in conjunction with any other antenna or transmitter.

This equipment complies with FCC/IC radiation exposure limits set forth for an uncontrolled environment and meets the FCC radio frequency (RF) Exposure Guidelines in Supplement C to OET65 and RSS-102 of the IC radio frequency (RF) Exposure rules. This equipment has very low levels of RF energy that is deemed to comply without maximum permissive exposure evaluation (MPE). But it is desirable that it should be installed and operated keeping the radiator at least 20 cm (7 7/8") or more away from person's body (excluding extremities: hands, wrists, feet and ankles).

**SC-HC57**

**THE FOLLOWING APPLIES ONLY IN CANADA.**

This device complies with RSS-210 of the IC Rules.

Operation is subject to the following two conditions:

- (1) This device may not cause harmful interference,
- (2) This device must accept any interference received, including interference that may cause undesired operation of the device.

Product Identification Marking is located on the bottom of the unit.

## Table of contents

<b>IMPORTANT SAFETY INSTRUCTIONS</b> .....	2
<b>Accessories</b> .....	3
<b>Playable media</b> .....	4
<b>Control reference guide</b> .....	5
<b>Attaching the unit to a wall (optional)</b> .....	6
<b>Connections</b> .....	8
<b>Inserting or removing media</b> .....	8
<b>CD, iPod/iPhone playback operations</b> .....	9
<b>Listening to the radio</b> .....	10
<b>Internet Radio</b> .....	10
<b>Sound adjustment</b> .....	11
<b>Clock and Timer</b> .....	11
<b>SC-HC57 AirPlay</b> .....	12
<b>Others</b> .....	14
<b>Troubleshooting</b> .....	16
<b>Specifications</b> .....	18
<b>Unit and media care</b> .....	19
<b>Licenses</b> .....	19

### *Spanish Quick Reference / Referencia rápida en español*

<b>Conexiones</b> .....	20
<b>Insertar o sacar los medios</b> .....	20
<b>Las operaciones de reproducción de CD, iPod/iPhone</b> .....	20
<b>Radio</b> .....	21
<b>Reloj y temporizador</b> .....	21

<b>Limited Warranty (ONLY FOR U.S.A. AND PUERTO RICO)</b> .....	22
<b>Limited Warranty (ONLY FOR CANADA)</b> .....	23

## Playable media

### Compatible iPod/iPhone for docking

#### iPod touch

1st, 2nd, 3rd, and 4th generation

#### iPod nano

2nd, 3rd, 4th, 5th, and 6th generation

#### iPod classic

#### iPhone 4S / iPhone 4 / iPhone 3GS / iPhone 3G / iPhone

(as of December 2011)



- Compatibility depends on the software version. Update your iPod/iPhone to the latest software before using it with this unit.
- Depending on the model, it may be necessary to remove the iPod/iPhone and select the album, artist, etc. on the iPod/iPhone.
- Be sure to use a dock adapter that is compatible with your iPod/iPhone. To purchase a dock adapter, consult your iPod/iPhone dealer. If a dock adapter is not available, insert and remove the iPod/iPhone with care.
- Please be aware that Panasonic accepts no responsibility for the loss of data and/or information.

### Charging the iPod/iPhone

The iPod/iPhone will start being charged once connected to this unit.

- In standby mode, "IPOD CHARGING" is shown on the main unit's display.
- Check the iPod/iPhone to see if the battery is fully charged. (Once fully recharged, additional recharging will not occur.)

### Compatible CD

- A disc with the CD Logo.



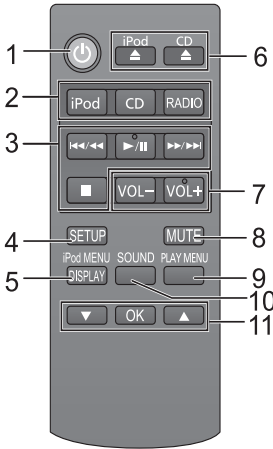
- This unit can play back discs that conform to the CD-DA format.
- The unit may not be able to play some discs due to the condition of the recording.
- This unit cannot play back MP3 files.

### Note about using a DualDisc

- The digital audio content side of a DualDisc does not meet the technical specifications of the Compact Disc Digital Audio (CD-DA) format so play may not be possible.
- Do not use a DualDisc in this unit as it may not be possible to insert it correctly and it may get scratched or scraped.

# Control reference guide

## Remote control



- 1 Turn this unit on or off
- 2 Select the audio source
- 3 Basic playback control buttons
- 4 Enter setup menu
- 5 Enter the iPod/iPhone menu / Change displayed information
- 6 Open/close the sliding door
- 7 Adjust the volume
- 8 Mute the sound  
Mutes the sound. Press again to cancel. "MUTE" is also canceled when the volume is adjusted or the unit is turned off.
- 9 Enter playback menu
- 10 Enter sound menu
- 11 Selection/OK

Keep the button-type battery out of reach of children to prevent swallowing.

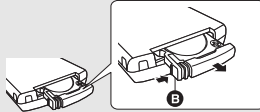
### Preparation

Remove the insulation sheet **A** before using.



### To replace a button-type battery

- 1 While pressing the stopper **B**, pull out the battery holder.
- 2 Set the button-type battery with its (+) mark facing upward and then put the battery holder back in place.

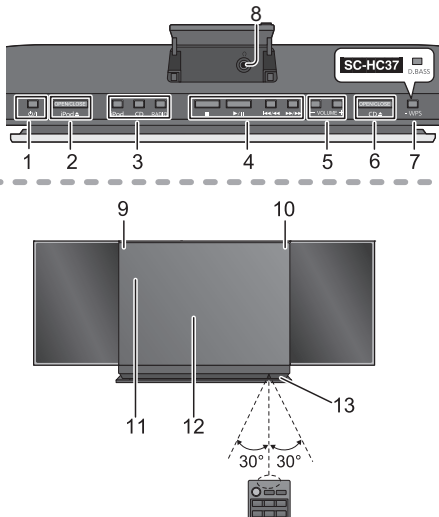


Battery type: CR2025 (Lithium battery)

- The battery should normally last about 1 year, however this depends on how frequently the unit is used.

## Main unit

### Top view



- 1 Standby/on switch [⏻/⏻]  
Press to switch the unit from on to standby mode or vice versa.  
In standby mode, the unit is still consuming a small amount of power.
- 2 Open/close the sliding door (for iPod/iPhone)
- 3 Select the audio source
- 4 Basic playback control buttons
- 5 Adjust the volume (0(min) to 50(max))
- 6 Open/close the sliding door (for discs)
- 7 **SC-HC57** WPS pairing button (⇒ 12)  
**SC-HC37** Dynamic Bass sound effect selector
- 8 Headphone jack  
Plug type:  $\varnothing 3.5$  mm (1/8") stereo
  - To prevent hearing damage, avoid listening for prolonged periods of time.  
Excessive sound pressure from earphones and headphones can cause hearing loss.
- 9 Standby indicator
- 10 **SC-HC57** Wi-Fi® status indicator
- 11 Display
- 12 Sliding door
- 13 Remote control signal sensor  
Distance:  
Within approx. 7 m (23 ft) directly in front.
  - To avoid interference, please do not put any objects in front of signal sensor.

# Attaching the unit to a wall (optional)

## Installation accessories

### ■ Supplied accessories

- 1 Safety holder
- 1 Screw
- 2 Wall mount brackets

### ■ Commercially available accessories (not supplied)

- 4 Wall mount bracket fixing screws
- 1 Safety holder fixing screw
- 1 Fall prevention cord
- 1 Screw eye

- Keep the safety holder out of reach of children to prevent swallowing.
- Keep the screws out of reach of children to prevent swallowing.
- Keep the wall mount brackets out of reach of children to prevent swallowing.



Use screws with a nominal diameter of  $\varnothing 4$  mm ( $5/32$ " ), which are suitable to the material of the wall (e.g., wood, steel, concrete, etc.)

## Safety precautions

**Professional installation is required. The installation should never be done by any other than a qualified installation specialist. PANASONIC DISCLAIMS ANY PROPERTY DAMAGE AND/OR SERIOUS INJURY, INCLUDING DEATH RESULTING FROM IMPROPER INSTALLATION OR INCORRECT HANDLING.**

- Be sure to install this unit as indicated within this Owner's Manual.

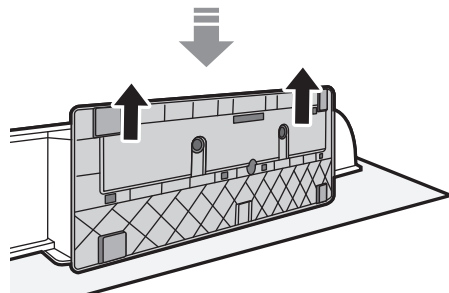
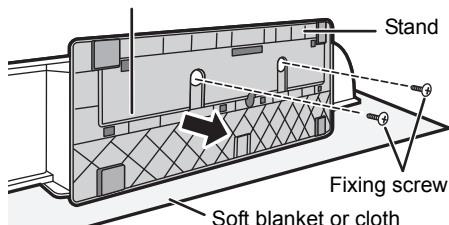
## Wall mount instructions

**Before installation, turn the unit off and disconnect the AC power supply cord from the AC outlet.**

### 1 Detach the stand from the unit.

- ↳ Unscrew the fixing screw (2 pieces) at the bottom of the unit.
- ↳ Gently pull the stand off the unit as illustrated.
- Keep the removed screws and stand in a safe place.

Bottom of main unit

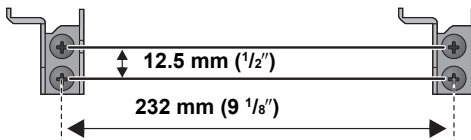


### 2 Measure and mark the position of the wall mount brackets (Both sides).

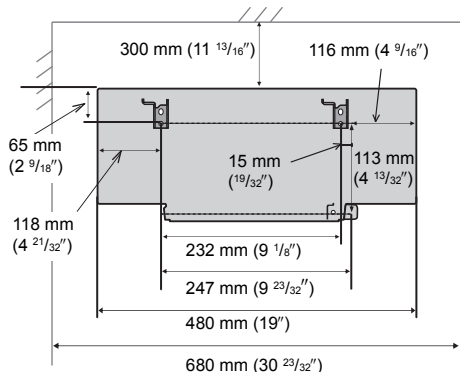
↳ Use figures below to identify the screwing positions.

**SC-HC57** Before deciding the location to place the unit, be sure to check that the Wi-Fi signal strength is sufficient. (⇒ 12, 15)

### The position to attach the wall mount brackets

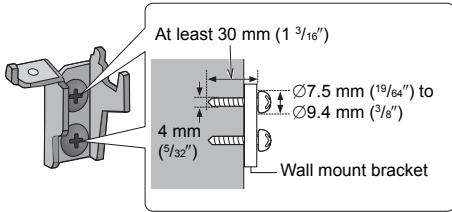


### Space required



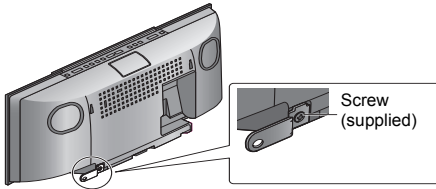
**3** Attach the wall mount bracket to the wall with 2 screws (not supplied). (Both sides)

- Use a spirit level to ensure both wall mount brackets are level.
- Make sure that the screw used and the wall are strong enough to support the weight of at least 33 kg (72.8 lbs).



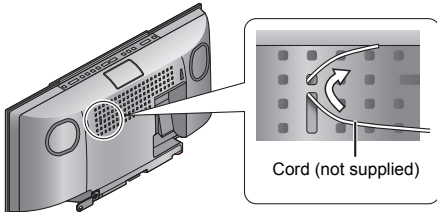
**4** Fix the safety holder onto the unit with the screw (supplied).

↳ Screw tightening torque: 50 N•cm (0.4 lbf•ft) to 70 N•cm (0.5 lbf•ft).



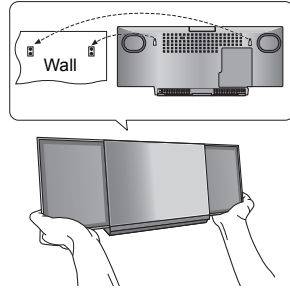
**5** Attach the fall prevention cord (not supplied) to this unit.

- Use a cord of less than ∅2.0 mm (<sup>5</sup>/<sub>64</sub>""), which is capable of supporting over 33 kg (72.8 lbs).



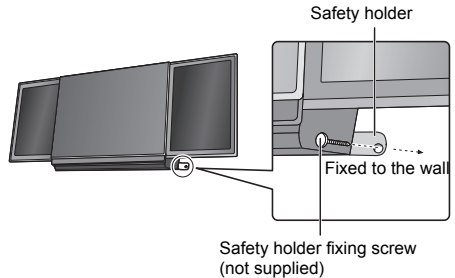
**6** Hook the unit securely onto the wall mount brackets with both hands.

- Connect the FM antenna and the AC power supply cord to the unit before hanging the unit onto the wall. (⇒ 8)
- After hanging the unit, release your hand carefully to confirm the unit sits securely on the wall.



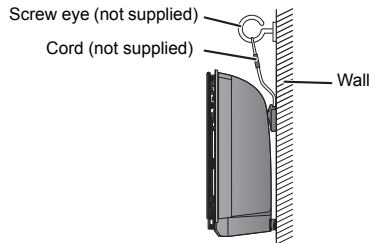
**7** Drive the safety holder fixing screw (not supplied) to secure the safety holder onto the wall.

- Make sure that the screw used and the wall are strong enough to support the weight of at least 33 kg (72.8 lbs).

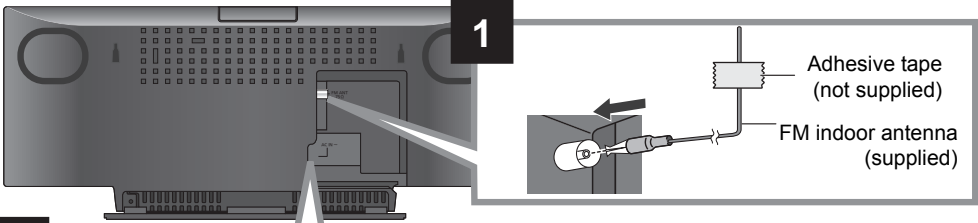


**8** Attach the fall prevention cord (not supplied) to the wall.

- Make sure that the screw used and the wall are strong enough to support the weight of at least 33 kg (72.8 lbs).



# Connections

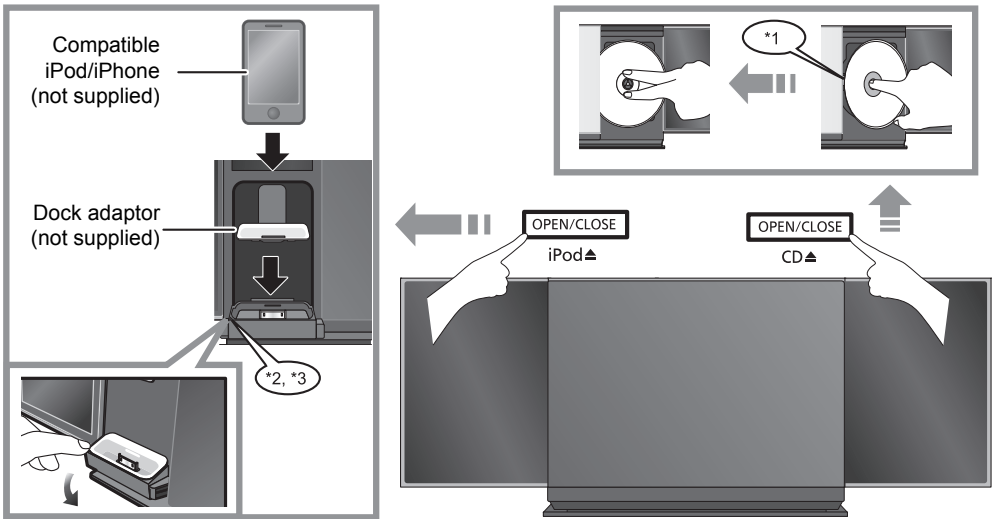


**2** **Connect the AC power supply cord after all other connections are complete.**  
 This unit consumes a small amount of AC power (⇒ 18) even when turned off.



- These speakers do not have magnetic shielding. Do not place them near a television, personal computer or other devices easily influenced by magnetism.
- Tape the antenna to a wall or column in a position with the least amount of interference. (Use an FM outdoor antenna if radio reception is poor.)

# Inserting or removing media



- \*1: Make sure to tilt the disc so as not to touch the sliding door.
- \*2: Do not push or pull the dock manually.
- \*3: When inserting or removing the iPod/iPhone, tilt the dock slightly by holding the corner of the dock.
- Make sure that the unit does not fall when inserting or removing media.
- Be sure to remove the iPod/iPhone from its case.
- When moving this unit, be sure to remove all media and turn this unit to standby mode.



## CD, iPod/iPhone playback operations

The following marks indicate the availability of the feature.

**CD**: CD audio in CD-DA format

**iPod**: Compatible iPod/iPhone (⇒ 4)

### Preparation

- Turn the unit on.
- Insert the media. (⇒ 8)
- Press [CD] or [iPod] to select the audio source.

### Basic play (**CD**, **iPod**)

<b>Play</b>	Press [▶/  ].
<b>Stop</b>	Press [■].
<b>Pause</b>	Press [▶/  ]. Press again to restart play.
<b>Skip</b>	Press [◀◀/◀◀] or [▶▶/▶▶] to skip track.
<b>Search</b>	During playback Press and hold [◀◀/◀◀] or [▶▶/▶▶]. <b>iPod</b> Backwards search is only within the current track.
<b>Volume</b>	Press [VOL -] or [VOL +] to adjust the volume.
<b>Mute</b>	Press [MUTE] to mute the sound.

### ■ **CD** To view the track number and remaining time

Press [DISPLAY] repeatedly during play or pause.

### ■ **iPod** To navigate through the iPod/iPhone menu

- [▲, ▼]: To navigate menu items.
- [OK]: To go to the next menu.
- [iPod MENU]: To return to the previous menu.



- To view the operation, open the sliding door.
- The operation may vary among iPod/iPhone models.

### Play modes (**CD**)

Select the playback mode.

- These modes can be combined with the repeat play feature.

- 1 Press [PLAY MENU] repeatedly to select "PLAYMODE".
- 2 Press [▲, ▼] to select the following mode and press [OK].

<b>OFF PLAYMODE</b>	Select to cancel the play mode setting.
<b>1-TRACK</b> ("1, 2" is displayed.)	Only plays the selected track. (Skip to the desired track (⇒ left))
<b>RANDOM</b> ("RND" is displayed.)	Plays a disc randomly.

- 3 Press [▶/||] to start play.



- When using iPod/iPhone, use the setting on the iPod/iPhone.
- During random play, you cannot skip to the previous track.
- The current play mode is cleared when you open the sliding door for discs.

### Repeat play (**CD**)

- 1 Press [PLAY MENU] repeatedly to select "REPEAT".
- 2 Press [▲, ▼] to select "ON REPEAT" and press [OK].
  - "↺" is displayed.



- When using iPod/iPhone, use the setting on the iPod/iPhone.
- To cancel repeat play, select "OFF REPEAT" in step 2. (The mode is also canceled when you open the sliding door for discs.)

---

## Listening to the radio

You can preset up to 30 channels.

### Preparation

Make sure that the FM antenna is connected. (⇒ 8)



A station previously stored is overwritten when another station is stored in the same channel preset.

### Presetting stations automatically

- 1 Press [RADIO] to select "FM".
- 2 Press [PLAY MENU] repeatedly to select "A.PRESET" and then press [OK].
- 3 Press [▲, ▼] to select "LOWEST" or "CURRENT" and then press [OK].

#### LOWEST:

To begin auto preset with the lowest frequency (FM 87.9 or FM 87.5).

#### CURRENT:

To begin auto preset with the current frequency.\*

\* To change the frequency, refer to "Manual tuning and presetting".

The tuner starts to preset all the stations it can receive into the channels in ascending order.

### Listening to a preset channel

#### Preparation

- 1 Press [RADIO] to select "FM".
- 2 Press [PLAY MENU] repeatedly to select "TUNEMODE" and then press [OK].
- 3 Press [▲, ▼] to select "PRESET" and then press [OK].

- 1 Press [RADIO] to select "FM".
- 2 Press [◀◀/◀◀] or [▶▶/▶▶] to select the channel.

#### Manual tuning and presetting

Select a radio broadcast.

- 1 Press [RADIO] to select "FM".
- 2 Press [PLAY MENU] repeatedly to select "TUNEMODE" and then press [OK].
- 3 Press [▲, ▼] to select "MANUAL" and then press [OK].
- 4 Press [◀◀/◀◀] or [▶▶/▶▶] to tune to the required station.
  - To start automatic tuning, press and hold [◀◀/◀◀], [▶▶/▶▶] until the frequency starts scrolling. Tuning stops when a station is found.

To preset the channel

- 5 While listening to the radio broadcast Press [OK].
- 6 Press [▲, ▼] to select the channel and then press [OK].

#### To improve FM sound quality

- 1 While receiving FM broadcasts, press [PLAY MENU] repeatedly to select "FM MODE" and then press [OK].
- 2 Press [▲, ▼] to select "MONO" and then press [OK].
  - This setting can be preset and memorized. To do so, continue to step 5 of "Manual tuning and presetting".



- Select "STEREO" in step 2 to return to stereo broadcasts.
- "MONO" is canceled if the frequency is changed.

#### To display the current output status

Press [DISPLAY].

"FM ST": The channel output is stereo.

"FM MONO": The channel output is monoral.

"FM": This unit is not tuned to a station.



- "STEREO" is displayed when this unit tunes to a stereo broadcast.

---

## Internet Radio

This unit can output Internet radio if "vTuner for Panasonic" is installed on your iPhone/iPod touch.

#### Preparation

- Install "vTuner for Panasonic" to your iPhone/iPod touch.
- Install iOS 5.0 or later.

- 1 Insert the iPhone/iPod touch to this unit.
- 2 Press [iPod] repeatedly to select "VTUNER".
  - ↳ "vTuner for Panasonic" starts.



- Visit the below website for the following information about "vTuner for Panasonic":  
<http://radio.vtuner.com/panasonic/en/>  
(Compatible iPhone/iPod touch models and software versions, purchasing, installation and operation details.)
- A pop-up screen may appear on your iPhone/iPod touch. Follow the indicated instructions.

## Sound adjustment

The following sound effects can be added to the audio output.

- 1 Press [SOUND] repeatedly to select the effect and then press [OK].
- 2 Press [▲, ▼] to select the setting and then press [OK].

Direct-Vocal Surround (D.SURROUND)	“LEVEL 1”, “LEVEL 2” or “OFF”. <ul style="list-style-type: none"><li>• The factory preset is “OFF”.</li></ul>
Preset EQ (PRESET EQ)	“HEAVY” (heavy), “SOFT” (soft), “CLEAR” (clear), “VOCAL” (vocal) or “FLAT” (flat/off). <ul style="list-style-type: none"><li>• The factory preset is “HEAVY”.</li></ul>
Bass (BASS) or Treble (TREBLE)	Adjust the level (–4 to +4).
Dynamic Bass*1 (D.BASS)	“ON D.BASS” or “OFF D.BASS”. <ul style="list-style-type: none"><li>• The factory preset is “ON D.BASS”.</li></ul>

\*1: **SC-HC37** This function can also be selected with the [D.BASS] button on the unit.

- You may experience a reduction in sound quality when these effects are used with some sources. If this occurs, turn the sound effects off.

## Clock and Timer

### Setting the clock

This is a 12-hour clock.

- 1 Press [SETUP] repeatedly to select “CLOCK” and then press [OK].
- 2 Press [▲, ▼] to set the time and then press [OK].



- To display the clock, press [SETUP] repeatedly to select “CLOCK” and then press [OK] once. The time is displayed for 10 seconds. (During standby, press [iPod MENU, DISPLAY] once.)
- The clock is reset when there is a power failure or when the AC power supply cord is removed.
- Reset the clock regularly to maintain accuracy.

### Play timer

You can set the timer so this unit turns on at a certain time every day.

#### Preparation

Set the clock (⇒ left).

#### ■ Setting the timer

- 1 Press [SETUP] repeatedly to select “TIMER ADJ” and then press [OK].
- 2 Press [▲, ▼] to set the starting time (“ON TIME”) and then press [OK].
- 3 Press [▲, ▼] to set the finishing time (“OFF TIME”) and then press [OK].



- To display the timer settings, press [SETUP] repeatedly to select “TIMER ADJ” and then press [OK] once. (During standby, press [iPod MENU, DISPLAY] twice.)
- The music source and volume will also be displayed if the timer is turned on. (⇒ below)

#### ■ Turn the timer on

- 1 Select the music source\*1 and set the desired volume.
- 2 Press [SETUP] repeatedly to select “TIMER SET” and then press [OK].
- 3 Press [▲, ▼] to select “SET” and then press [OK].
  - “⊙” is displayed.
- 4 Press [⏻] to turn the unit off.



- \*1: “CD”, “iPOD” and “FM” can be set as the music source.
- This unit can be used as normal after the timer is set, however:
  - Turn the unit to standby mode before the timer start time.
  - Even if the audio source or the volume is changed, the timer will still use the audio source and volume that was set when the timer was turned on.
- To turn the timer off, select “OFF” in step 3.
- The unit will turn on at the preset time, with the volume increasing gradually to the preset level.

### Sleep timer

The sleep timer can turn the unit off after a set time.

- 1 Press [SETUP] repeatedly to select “SLEEP” and then press [OK].
- 2 Press [▲, ▼] to set the time (in minutes) and then press [OK].

“SLEEP 30” ↔ “SLEEP 60” ↔ “SLEEP 90” ↔ “SLEEP 120”  
↑ ← OFF (Cancel) → ↑

- The remaining time is indicated on the unit’s display except when other operations are performed.
- The play timer and sleep timer can be used together. The sleep timer always has priority.

## SC-HC57 AirPlay

With this feature you can wirelessly stream music to this unit's speakers.

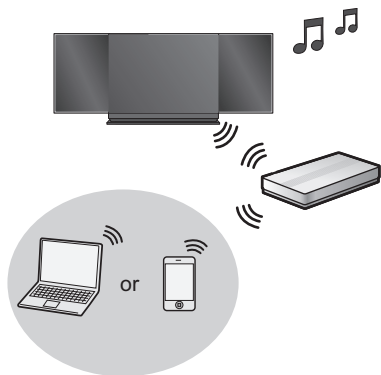
### Compatible devices (as of December 2011)

AirPlay works with;

- iOS 4.2 or later (iPod touch (2nd, 3rd, and 4th generation), iPhone 4S, iPhone 4, iPhone 3GS, iPad 2, iPad)
- iTunes 10.2 or later (Mac / PC)

### Network settings

To use the AirPlay function, this unit must join the same wireless network as the compatible device.



### Preparation

With this unit there are 2 methods to setup the wireless connection. Determine which type of wireless network router you are using and follow the method that matches your device.

- Refer to the operating instructions of the wireless network router for details.

If you do not know which type of wireless network router you are using, use "Method 2".

- Turn the unit on.

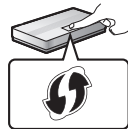


- When performing the network settings, place this unit close to the wireless router.
- Simultaneous use with a microwave, cordless telephone and other 2.4 GHz devices may result in connection interruptions.
- Immediately after this unit is turned on, the network setup may take longer to start.
- This unit cannot join a wireless network using WEP security settings with "Method 1". Use "Method 2" to join the wireless network.
- To cancel this setting in the middle, press (⏻) to turn off the unit.
- For up to date compatibility information on your Wireless router refer to <http://panasonic.jp/support/global/cs/> (This site is in English only.)

## Method 1

If your wireless network router supports WPS\*1.

### Using the WPS Push Button Configuration (PBC)



WPS Push Button Configuration (PBC) compatible wireless router may have this mark.

- 1 Press and hold [– WPS] on the unit.
  - ↳ "CONNECT" flashes on the display. (Wi-Fi status indicator blinks blue.)
  - Complete step 2 within 2 mins.
- 2 Press the WPS button on the wireless router.
  - ↳ When a link is established "LINKING" is indicated on this unit's display.
  - ↳ When the configuration is finished "SUCCESS" is indicated on this unit's display. (Wi-Fi status indicator lights blue.)
- 3 Press [OK] on the remote control to complete the setting.



- This unit can also be set using the WPS PIN code. Replace step 2 of "Method 1" with the following steps. (Before starting, refer to the wireless network router's operating instructions for details on how to enter the PIN code.)
  - 1 While "CONNECT" is flashing press and hold [– WPS] again to display the 8 digit PIN code. (Wi-Fi status indicator blinks purple.)
  - 2 Enter the PIN code into the wireless router.
- To edit this system's name it is necessary to use "Method 2".
- "FAIL" may be displayed if the connection was not made within the set time limit. Try the setting again. If "FAIL" is still displayed, try "Method 2".

## Method 2

If your wireless network router does not support WPS\*1.

With this method, you will access this unit's wireless network settings from the Internet browser of your compatible device.

- The illustrations and explanations are based on an iPhone. However, the word "iPhone" can be replaced with your compatible device.

### Preparation

- Check your **home wireless network name** (Network name (SSID)) and **password** for this network. This can often be found on the wireless router itself.
- Turn on your iPhone.

\*1: WPS stands for "Wi-Fi Protected Setup™".

- 1 Press [SETUP] on the remote control repeatedly to select "NET SETUP" and then press [OK].

↳ "SETTING" is indicated on the display. (Wi-Fi status indicator blinks purple.)

- 2 Connect your iPhone to this unit's wireless network called "Setup \_\_\_\_\_"\*1, 2.

- Once "Setup \_\_\_\_\_" is selected, the iPhone is connected with this unit.

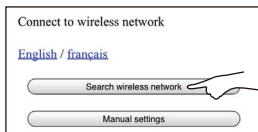


- 3 Start Safari on your iPhone and type "http://192.168.1.12" into the URL address field and display the page.

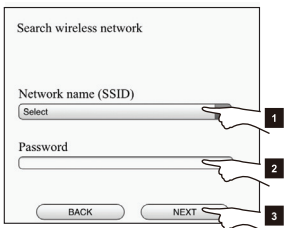


↳ This unit's setup window is displayed.

- 4 Select "Search wireless network".



- 5 Select and input the details.



- 1 Select your **home wireless network name**.\*3
- 2 Type the **password**.
- 3 Select "NEXT".

- 6 Perform the "Additional settings". (⇒ right)  
If they do not apply, continue to the next step.

- 7 Select "JOIN" to apply the settings.

- ↳ In the pop-up screen select "OK" to continue.
  - Select "CANCEL" to return to the setup window.
- ↳ The wireless status indicator lights blue.
  - You can now close the Safari browser.
- ↳ When the configuration is finished "SUCCESS" is indicated on this unit's display.

If "FAIL" is displayed press [OK]. Then check the wireless network password and other settings and start again from step 1.

- 8 Press [OK] on the remote control to complete the settings.

- 9 Connect your iPhone back to your home wireless network.

### Alternative settings

#### Instead of steps 4 and 5:

Select "Manual settings".

- 1 Type your **home wireless network name** into the "Network name (SSID)" field.
- 2 Select the **encryption method** from the "Security system" drop down list.
- 3 Type the **password** into the "Password" field and then select "NEXT".

### Additional settings

#### In step 6:

If your home wireless network has been setup to use specific IP Addresses, Subnet Mask, Default Gateway, Primary DNS, etc. Select "Advanced network settings".

↳ Input the required addresses into each field and select "OK".

- To change the settings back to DHCP, select "ON" from the "DHCP" drop down list.

If you want to change the name of this unit that is displayed as the AirPlay speakers. Select "Edit STEREO SYSTEM name".

↳ Only ASCII characters can be used.

- ↳ Type a new name into the "STEREO SYSTEM name" field and select "OK".



- Enable Java and Cookies in your browser settings.
- To cancel this setting in the middle, press [⏏] to turn off the unit.

(Continues to next page)

\*1: " \_ " stands for a digit that is unique to each set.

\*2: Make sure that DHCP is enabled for the network setting on the iPhone.

\*3: If you have set your wireless network to be invisible, select "BACK" and refer to "Alternative settings". (⇒ above)

## Using AirPlay with this unit's speakers


When this unit is on the same network as the compatible device, you can select this unit as the speakers.

### Preparation

- Connect this unit to the same network as the compatible device. (⇒ 12)
- Turn on the compatible device.

**1** Start iTunes on your Mac/PC or the Music App on your iOS device.

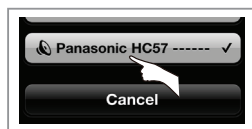
- If the Music App on your iOS device is used, select the file that is to be played.

**2** Select this unit from the AirPlay  icon at the bottom right-hand corner of the display.

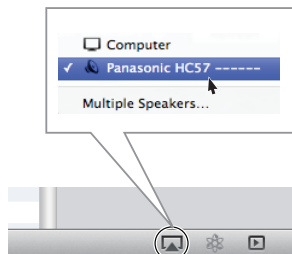
↳ Check the volume settings before starting the playback. (When AirPlay is used for the first time, the volume may be output at the maximum setting.)

- If you have not changed the name, this unit will be displayed as "Panasonic HC57 \_ \_ \_ \_ \_" \*1, 2.

e.g., iPhone iOS 5.0



e.g., iTunes 10.5  
(Bottom right)



**3** Start play.



- This unit can be set to turn on automatically when this unit is selected as the output speakers. (⇒ 15)
- Playback of other audio sources will stop and AirPlay output will have priority.
- Volume changes on the iOS device or iTunes will be applied to this unit. (Refer to the iTunes Help for the required settings in iTunes.)
- AirPlay will not work when playing back videos on iTunes.

\*1: “\_” stands for a digit that is unique to each set.

\*2: The name that is displayed for this unit can be changed from the “Edit STEREO SYSTEM name” settings in “Method 2”. (⇒ 12)

## Others

### Automatic standby

As a factory preset, this unit will always turn off automatically if there is no sound output and no operation for 30 minutes.

#### To cancel this function

- 1** Press [SETUP] repeatedly to select “AUTO OFF” and then press [OK].
- 2** Press [▲, ▼] to select “OFF” and then press [OK].



- To turn automatic standby on, select “ON” in step 2.
- This setting cannot be selected when “FM” is the source.

### Display brightness

The brightness of this unit's display can be changed.

- 1** Press [SETUP] repeatedly to select “DIMMER” and then press [OK].
- 2** Press [▲, ▼] to select “ON” and then press [OK].



To cancel the dimmer, select “OFF” in step 2.

### Changing the main unit and remote control code

When other Panasonic equipment responds to the supplied remote control, change the remote control code.

- 1** Press [CD] to select “CD”.
- 2** Press and hold [CD] on the main unit and [▲] on the remote control until the main unit's display shows “REMOTE 2”.
- 3** Press and hold [OK] and [▲] on the remote control for at least 4 seconds.



To change the mode back to “REMOTE 1”, repeat the steps above by replacing [▲] with [▼].

## SC-HC57 Software update

Occasionally, Panasonic may release updated software for this unit that may add or improve the way a feature operates. These updates are available free of charge.

### Preparation

Connect this unit to the wireless network. (⇒ 12)

- Make sure that the wireless network is connected to the Internet.
- 1 Press [SETUP] repeatedly to select "SW UPDATE" and then press [OK].
  - 2 Press [▲, ▼] to select "UPDATE? Y" and then press [OK] to start the update.
    - ↳ After the update has finished, "SUCCESS" is displayed.
  - 3 Disconnect the AC power supply cord and reconnect it after 3 minutes.
- **DO NOT DISCONNECT the AC power supply cord while one of the following messages is displayed.**
    - "LINKING", "UPDATING" or "□□□%" ("□" stands for a number.)



- If you do not want to update the unit, select "UPDATE? N" and then press [OK] in step 2.
- If there are no updates, "NO NEED" is displayed after step 2.
- During the update process, no other operations can be performed.
- **Downloading will require several minutes. It may take longer or may not work properly depending on the connection environment.**

### ■ Checking the software version

- 1 Press [SETUP] repeatedly to select "SW VER." and then press [OK].
  - ↳ The version of the installed software is displayed.
- 2 Press [OK] to exit.

## SC-HC57 Wi-Fi signal strength

To check the Wi-Fi signal strength where the unit is located.

### Preparation

Connect this unit to the wireless network. (⇒ 12)

- 1 Press [SETUP] repeatedly to select "SIG.LEVEL" and then press [OK].
  - The unit's display shows "LEVEL □". ("□" stands for a number.)
- 2 Press [OK] to exit this display mode.



- It is recommended to have a signal strength of "3". Change the position or angle of your wireless network router or the unit if the indication is "2" or "1" and see if the connection improves.
- If "LEVEL 0" is displayed, this unit cannot establish a link with the wireless network router. (⇒ 17)

## SC-HC57 Network standby

This unit can turn on automatically from standby mode when this unit is selected as the AirPlay speakers.

### Preparation

Connect this unit to the wireless network. (⇒ 12)

- 1 Press [SETUP] repeatedly to select "NET STNB Y" and then press [OK].
- 2 Press [▲, ▼] to select "ON" and then press [OK].



- To cancel this function, select "OFF" in step 2.
- The factory preset is "OFF". If this function is set to "ON" the standby power consumption will increase.

## SC-HC57 IP/MAC Address

To check the unit's IP/MAC address.

- 1 Press [CD] to select "CD".
- 2 Press and hold [- WPS] on the unit and [▼] on the remote control until the unit's display shows the IP address.
  - ↳ The IP address is partially displayed.
    - To display the MAC address on the unit, repeat the steps above by replacing [▼] with [▲].
- 3 Press [▲, ▼] on the remote control to show the rest of the IP address.



- Be sure to remove the disc from the disc tray when checking the address.
- The "-" displayed on the top or bottom left of the display indicate the first and last units respectively.

## SC-HC57 Using AirPlay without a wireless network router

It is possible to directly connect the AirPlay compatible device to this unit.

- 1 While this unit is turned off, press and hold [- WPS] and then also [⏻/⏪] on the main unit for more than 2 seconds.
  - ↳ "HC57 DIR \_\_\_\_\_"\*1 is displayed.
- 2 Connect your AirPlay compatible device to this unit's wireless network called "HC57 DIR \_\_\_\_\_"\*1.

- Refer to "Using AirPlay with this unit's speakers" (⇒ 14) and start the playback.

\*1: "-" stands for a digit that is unique to each set.



- This setting is reset when this unit is turned off.
- This unit will always turn off automatically if there is no sound output and no operation for 10 minutes.
- Functions other than AirPlay cannot be used while this feature is used.

## Troubleshooting

Before requesting service, make the following checks. If you are in doubt about some of the check points, or if the solutions indicated in the following guide do not solve the problem, refer to “Customer Services Directory (United States and Puerto Rico)” on page 22 if you reside in the U.S.A. or Puerto Rico, or refer to “Limited Warranty (ONLY FOR CANADA)” on page 23 if you reside in Canada.

### To return all settings to the factory preset

When the following situations occur, reset the memory:

- There is no response when buttons are pressed.
  - You want to clear and reset the memory contents.
- ① Disconnect the AC power supply cord. (Wait for at least 3 minutes before proceeding to step ②.)
  - ② While pressing and holding down [⏻/⏪] on the main unit, reconnect the AC power supply cord.
    - “-----” appears on the display.
  - ③ Release [⏻/⏪].



All the settings are returned to the factory preset. You will need to reset the memory items.

### SC-HC57 Do you have the latest software installed?

- Occasionally, Panasonic may release updated software for this unit that may add or improve the way a feature operates. (⇒ 15)

## Common problems

### Humming heard during play.

- An AC power supply cord or fluorescent light is near the cords. Keep other appliances and cords away from this unit's cables.

## Disc operations

### Incorrect display or play will not start.

- Make sure that the disc is compatible with this unit. (⇒ 4)
- There is moisture on the lens. Wait for about an hour and then try again.

## Radio

### A beat sound or noise is heard while receiving radio broadcast.

- Confirm the FM antenna is properly connected. (⇒ 8)
- Adjust the position of the antenna.
- Try to keep a certain amount of distance between the antenna and AC power supply cord.
- Try to use outdoor antenna if there are buildings or mountains nearby.

- Switch the television or other audio player off or separate it from the unit.
- Keep this unit away from mobile phones if the interference is apparent.

### Stations cannot be selected.

Change the FM frequency step.

- ① Press [RADIO] to select “FM”.
- ② Press and hold [RADIO] on the main unit.

After a few seconds the display changes to show the current lowest frequency. Continue to hold the button down. The lowest frequency changes and the step is changed.

## iPod/iPhone operations

### Cannot charge or operate.

- Check that the iPod/iPhone is connected firmly. (⇒ 8)
- The battery of the iPod/iPhone is depleted. Charge the iPod/iPhone, and then operate again.
- When unexpected operation occurs while using the iPod/iPhone, connect the iPod/iPhone again or try to restart the iPod/iPhone.

## SC-HC57 AirPlay operations

### Cannot connect to the network

- Confirm the network connection and settings. (⇒ 12)
- Your wireless network might be set to be invisible. In this case select “Manual settings” in “Method 2”. (⇒ 12)
- This unit cannot join a wireless network using WEP security settings with the WPS methods (“Method 1”). Use “Method 2” to join the wireless network. (⇒ 12)

### Cannot connect to the unit

- Make sure that this unit is on the same wireless network as the device you are trying to use. (⇒ 12)
- If “NET STNBY” is set to “OFF”, the AirPlay compatible device cannot be connected when this unit is off.
- Turn off the Wi-Fi setting on the AirPlay compatible device, set “NET STNBY” to “OFF” (⇒ 15) and then turn this unit off and on. Reconnect the compatible device to the Wi-Fi network and then select this unit as the AirPlay speakers again.
- Make sure that the multicast function on the wireless network router is set to on (enabled).

### My wireless network router is WPS PBC compatible, but the pairing does not work.

- If the network is set to be invisible, the push button configuration does not work. In this case, either make the wireless network visible while you set up the network for this unit or use “Method 2”. (⇒ 12)

### Playback does not start The sound is interrupted

- Simultaneous use with a microwave, cordless telephone and other 2.4 GHz devices may result in connection interruptions.
- If this unit is turned off and on during AirPlay playback, it may not be possible to output the sound from the speakers. Select a different device from the compatible device and then reselect this unit as the speakers.



## Remote control

### The remote control doesn't work properly.

- The remote control and this unit are using a different code. (⇒ right, "REMOTE □")

## Messages

### The following messages or service numbers may appear on the unit's display.

#### "--:--"

- You plugged the AC power supply cord in for the first time or there was a power failure recently. Set the time (⇒ 11).

#### "ADJUST CLOCK"

- Clock is not set. Adjust the clock accordingly.

#### "ADJUST TIMER"

- Play timer is not set. Adjust the play timer accordingly.

#### "AUTO OFF"

- The unit has been left unused for about 30 minutes and will shut down in a minute. Press any button to cancel it.

#### "CANNOT SET"

- Select an audio source other than "(SC-HC57) AIRPLAY" or "VTUNER".

#### "CHECKING CONNECTION"

- The unit is checking the connected iPod/iPhone. If this display keeps appearing, make sure that iPod/iPhone is inserted correctly and try again (⇒ 8).

#### "ERROR"

- Incorrect operation is performed. Read the instructions and try again.

#### "F61"

- There is a power supply problem. Consult the dealer.

#### "ILLEGAL OPEN"

- Sliding door is not in correct position. Turn the unit off and on again. If this display appears again, consult the dealer.

#### "NODEVICE"

- The iPod/iPhone device is not inserted correctly. Read the instructions and try again (⇒ 8).

#### "NO DISC"

- Insert the disc to be played (⇒ 8).

#### "NO PLAY"

- A CD that is not in CD-DA format is inserted. It cannot be played.

#### "NOT SUPPORTED"

- You have inserted an iPod/iPhone that cannot be played (⇒ 4).
- Insert correctly and try again if iPod/iPhone is compatible.

#### "READING"

- The unit is checking the CD information. After this display has disappeared, start operating.

#### "START ERROR"

- Check the iPhone/iPod touch.  
Visit the below website for more information:  
<http://radio.vtuner.com/panasonic/en/>

#### "REMOTE □" ("□" stands for a number.)

- The remote control and this unit are using different codes. Change the code on the remote control.
  - When "REMOTE 1" is displayed, press and hold [OK] and [▼] for more than 4 seconds.
  - When "REMOTE 2" is displayed, press and hold [OK] and [▲] for more than 4 seconds.

#### SC-HC57 "NOCONNECT"

- This unit cannot connect to the Internet.  
Check the Internet connection.

#### SC-HC57 "DL ERROR"

- The software download has failed. Press any button to exit. Please try again later.
- The server cannot be found. Press any button to exit. Make sure that the wireless network is connected to the Internet.

#### SC-HC57 "FAIL"

- Updating or setting has failed. Read the instructions and try again.

#### SC-HC57 "LEVEL 0"

- There is no link between this unit and the wireless network router.  
Try the following operations:
  - Check that the wireless network router is turned on.
  - Turn this unit off and on again.
  - Reset the wireless network settings. (⇒ 12)If the problem persists, consult your dealer.

# Specifications

## ■ GENERAL

Power consumption	<b>SC-HC57</b> 25 W
	<b>SC-HC37</b> 23 W
Power consumption in standby mode	Approx. 0.1 W
<b>SC-HC57</b> Power consumption in standby mode (When "NET STNBY" is "ON")	Approx. 5.6 W
Power supply	AC 120 V, 60 Hz

## Dimensions (W×H×D)

480 mm×197 mm×84 mm (19"×7 3/4"×3 1/2")  
(Depth without stand: 75 mm (3"))

## Mass (Weight)

**SC-HC57** Approx. 2.6 kg (5.7 lbs)

**SC-HC37** Approx. 2.5 kg (5.5 lbs)

## Operating temperature range

0 °C to +40 °C (+32 °F to +104 °F)

## Operating humidity range

35 % to 80 % RH (no condensation)

## ■ AMPLIFIER SECTION

### Output power:

#### RMS Output Power Stereo mode

##### Front Ch (both ch driven)

20 W per channel (6 Ω), 1 kHz, 10 % THD

##### Total RMS Stereo mode power

40 W

#### FTC Output Power Stereo mode

##### Front Ch (both ch driven)

15 W per channel (6 Ω),  
20 Hz to 20 kHz, 1 % THD

##### Total FTC Stereo mode power

30 W

## ■ TUNER SECTION

### Preset Memory

FM 30 stations

### Frequency Modulation (FM)

#### Frequency range

87.9 MHz to 107.9 MHz (200 kHz step)

87.5 MHz to 108.0 MHz (100 kHz step)

#### Antenna terminals

75 Ω (unbalanced)

## ■ DISC SECTION

### Disc played [8 cm (3") or 12 cm (5")]

CD, CD-R/RW (CD-DA)

### Pick up

#### Wavelength

790 nm (CD)

#### Laser power

For U.S.A. CLASS I  
For Canada CLASS 1

### Audio output (Disc)

#### Number of channels

2 ch (FL, FR)

## ■ SPEAKER SYSTEM SECTION

### Type

1 way, 1 speaker system (Passive Radiator)

### Speaker unit(s)

#### Full range

6.5 cm (2 1/2") Cone type×1 per channel

#### Passive Radiator

8 cm (3 1/8")×2 per channel

#### Impedance

6 Ω

## ■ **SC-HC57** Wi-Fi / AirPlay SECTION

### Wi-Fi

#### WLAN Standards

IEEE802.11b/g

#### Frequency Band

2.412 GHz to 2.472 GHz

#### Security

WEP, WPA™, WPA2™

#### WPS version

Version 2.0 (WEP not support)

## ■ TERMINAL SECTION

### iPod Connector

DC OUT 5 V 1.0 A MAX

### Phone jack

#### Terminal

Stereo, Ø3.5 mm (1/8") jack



- Specifications are subject to change without notice. Mass and dimensions are approximate.
- Total harmonic distortion is measured by a digital spectrum analyzer.

## Unit and media care

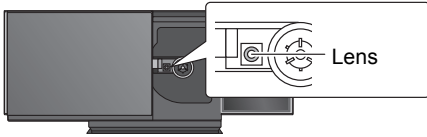
Pull out the AC power plug from the outlet before maintenance.

### ■ Clean this unit with a soft, dry cloth

- When dirt is heavy, wring a cloth moistened in water tightly to wipe the dirt, and then wipe it with a dry cloth.
- When cleaning the speaker covers, use a fine cloth. Do not use tissues or other materials (towels, etc.) that can fall apart. Small grains may get stuck inside the speaker cover.
- Never use alcohol, paint thinner or benzene to clean this unit.
- Before using chemically treated cloth, carefully read the instructions that came with the cloth.

### ■ Maintenance of the lens

- Clean the lens regularly to prevent malfunctions. Use a blower to remove dust and a cotton swab if it is extremely dirty.
- You cannot use a CD type lens cleaner.
- Do not leave the sliding door open for prolonged periods of time. This will cause the lens to get dirty.
- Be careful not to touch the lens with your fingers.



### ■ Clean discs

DO



DO NOT



Wipe with a damp cloth and then wipe dry.

### ■ Disc handling precautions

- Handle discs by the edges to avoid inadvertent scratches or fingerprints on the disc.
- Do not attach labels or stickers to discs.
- Do not use record cleaning sprays, benzene, thinner, static electricity prevention liquids or any other solvent.
- Do not use the following discs:
  - Discs with exposed adhesive from removed stickers or labels (rented discs etc.).
  - Discs that are badly warped or cracked.
  - Irregularly shaped discs, such as heart shapes.

### ■ To dispose or transfer this unit

The unit may keep the user settings information in the unit. If you discard this unit either by disposal or transfer, then follow the procedure to return all the settings to the factory presets to delete the user settings. (⇒ 16, "To return all settings to the factory preset")

- **SC-HC57** The operation history may be recorded in the memory of this unit.

## Licenses

SC-HC57



"Made for iPod", and "Made for iPhone" mean that an electronic accessory has been designed to connect specifically to iPod, or iPhone, respectively, and has been certified by the developer to meet Apple performance standards.

Apple is not responsible for the operation of this device or its compliance with safety and regulatory standards.

Please note that the use of this accessory with iPod, or iPhone may affect wireless performance.

AirPlay, the AirPlay logo, iPhone, iPod, iPod classic, iPod nano, and iPod touch are trademarks of Apple Inc., registered in the U.S. and other countries.

iPad is a trademark of Apple Inc.

SC-HC57

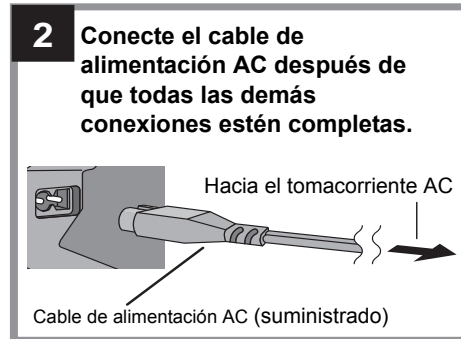
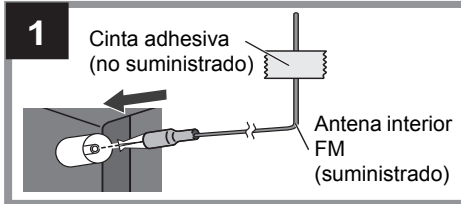


The Wi-Fi CERTIFIED Logo is a certification mark of the Wi-Fi Alliance.

The Wi-Fi Protected Setup Mark is a mark of the Wi-Fi Alliance.

"Wi-Fi", "Wi-Fi Protected Setup", "WPA" and "WPA2" are marks or registered marks of the Wi-Fi Alliance.

## Conexiones



- Consumo de energía en Standby (modo de espera): Aprox. 0,1 W

## Las operaciones de reproducción de CD, iPod/iPhone

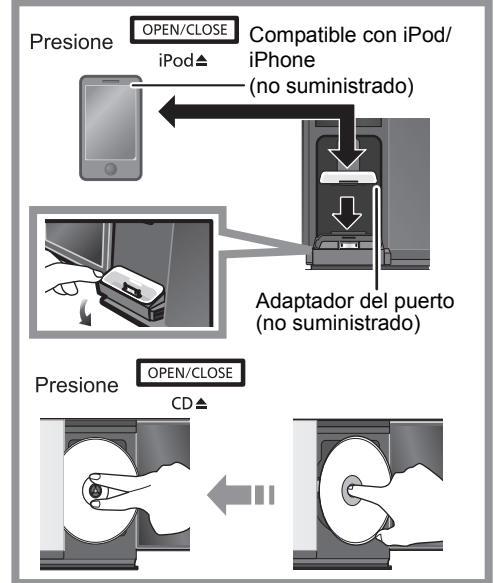
### Preparación

- Encienda la unidad.
- Inserte el medio. (⇒ arriba)
- Presione [CD] o [iPod] para seleccionar la fuente de audio.

### Reproducción básica (CD, iPod)

<b>Reproducir</b>	Presione [▶/  ].
<b>Detención</b>	Presione [■].
<b>Pausa</b>	Presione [▶/  ]. Presione nuevamente para reiniciar la reproducción.
<b>Saltear</b>	Presione [◀◀/◀◀] o [▶▶/▶▶] para saltar una pista.
<b>Búsqueda</b>	Durante la reproducción Mantenga presionado [◀◀/◀◀] o [▶▶/▶▶].
<b>Volumen</b>	Presione [VOL -] o [VOL +] para ajustar el volumen.
<b>Mute</b>	Presione [MUTE] para silenciar el sonido.

## Insertar o sacar los medios



### ■ iPod Para navegar por el menú de iPod/iPhone

- [▲, ▼]: Para navegar entre los elementos del menú.
- [OK]: Para ir al menú siguiente.
- [iPod MENU]: Para volver al menú anterior.



El funcionamiento puede variar entre los modelos de iPod/iPhone.

### Modos de reproducción (CD)

- 1 Presione [PLAY MENU] repetidamente para seleccionar "PLAYMODE".
- 2 Presione [▲, ▼] para seleccionar el modo siguiente y presione [OK].

<b>OFF PLAYMODE</b>	Selección para cancelar el ajuste del modo de reproducción.
<b>1-TRACK</b>	Solamente se reproduce la pista seleccionada. (Saltar a la pista deseada (⇒ izquierda))
<b>RANDOM</b>	Selección un disco para su reproducción de manera aleatoria.

- 3 Presione [▶/||] para comenzar a reproducir.

**Repetir la reproducción (CD)**

- 1 Presione [PLAY MENU] repetidamente para seleccionar "REPEAT".
- 2 Presione [▲, ▼] para seleccionar "ON REPEAT" y presione [OK].



- Cuando utiliza iPod/iPhone, use el ajuste en iPod/iPhone.
- Para detener la repetición de la reproducción, seleccione "OFF REPEAT" en el paso 2.

**Radio**

Puede predeterminar hasta 30 canales FM. Presione [RADIO] para seleccionar "FM".

**Preselección automática de las estaciones**

- 1 Presione [PLAY MENU] reiteradas veces para seleccionar "A.PRESET" y luego presione [OK].
- 2 Presione [▲, ▼] para seleccionar "LOWEST" y luego presione [OK].

**Escuchar una estación predeterminada**

- 1 Presione [PLAY MENU] reiteradas veces para seleccionar "TUNEMODE" y luego presione [OK].
- 2 Presione [▲, ▼] para seleccionar "PRESET" y luego presione [OK].
- 3 Presione [◀◀/▶▶] o [▶▶/▶▶] para seleccionar el canal.

**Reloj y temporizador**

**Ajuste del reloj**

Éste es un reloj de 12 horas.

- 1 Presione [SETUP] reiteradas veces para seleccionar "CLOCK" y luego presione [OK].
- 2 Presione [▲, ▼] para seleccionar la hora y luego presione [OK].

**Sincronizador de reproducción**

Puede fijar el temporizador para que esta unidad se encienda a una cierta hora.

**Preparación**

Fije el reloj (⇒ izquierda).

■ Ajuste del temporizador

- 1 Presione [SETUP] reiteradas veces para seleccionar "TIMER ADJ" y luego presione [OK].
- 2 Presione [▲, ▼] para seleccionar la hora de inicio y luego presione [OK].
- 3 Presione [▲, ▼] para seleccionar la hora de finalización y luego presione [OK].

■ Encienda el temporizador

- 1 Seleccione la fuente de música\*1 y fije el volumen deseado.
- 2 Presione [SETUP] reiteradas veces para seleccionar "TIMER SET" y luego presione [OK].
- 3 Presione [▲, ▼] para seleccionar "SET" y luego presione [OK].
  - Para apagar el temporizador, seleccione "OFF".
- 4 Presione [⏻] para apagar la unidad.



\*1: "CD", "IPOD" y "FM" se pueden fijar como la fuente de música.

**Apagado automático**

El apagado automático puede apagar la unidad después de una hora predefinida.

- 1 Presione [SETUP] reiteradas veces para seleccionar "SLEEP" y luego presione [OK].
- 2 Presione [▲, ▼] para seleccionar la hora y luego presione [OK].

"SLEEP 30" ↔ "SLEEP 60" ↔ "SLEEP 90" ↔ "SLEEP 120"  
 ↑    ↓  
   → OFF (Cancelar) ←  ↑

# Limited Warranty (ONLY FOR U.S.A. AND PUERTO RICO)

Panasonic Consumer Electronics Company,  
Division of Panasonic Corporation of North America  
One Panasonic Way, Secaucus, New Jersey 07094

## Panasonic Home Audio Products Limited Warranty

### Limited Warranty Coverage (For USA and Puerto Rico Only)

If your product does not work properly because of a defect in materials or workmanship, Panasonic Consumer Electronics Company (referred to as "the warrantor") will, for the length of the period indicated on the chart below, which starts with the date of original purchase ("warranty period"), at its option either (a) repair your product with new or refurbished parts, (b) replace it with a new or a refurbished equivalent value product, or (c) refund your purchase price. The decision to repair, replace or refund will be made by the warrantor.

Product or Part Name	Parts	Labor
Audio Products (except items below)	1 year	1 year
DVD Home Theater System	1 year	1 year
Home Theater Audio System	1 year	1 year
USB Reader-writer, PC Card Adapters (defective exchange)	1 year	Not Applicable
Accessories: Headphones, cartridges, Microphones, Adapters	90 days	90 days
Rechargeable Batteries, DVD-RAM Disc (defective exchange)	10 days	Not Applicable
SD Memory Cards, Rechargeable Battery Packs (defective exchange)	90 days	Not Applicable

During the "Labor" warranty period there will be no charge for labor. During the "Parts" warranty period, there will be no charge for parts. This Limited Warranty excludes both parts and labor for non-rechargeable batteries, antennas, and cosmetic parts (cabinet). This warranty only applies to products purchased and serviced in the United States or Puerto Rico. This warranty is extended only to the original purchaser of a new product which was not sold "as is".

### Carry-In or Mail-In Service

To find a service center please visit <http://www.panasonic.com/help> or call 1-800-211-PANA (7262).

When shipping the unit, carefully pack, include all accessories, and send it prepaid, adequately insured and preferably in the original carton. When shipping Lithium Ion batteries please visit our Web Site at [www.panasonic.com/BatteryHandling](http://www.panasonic.com/BatteryHandling) as Panasonic is committed to providing the most up to date information. Include a letter detailing the complaint, a return address and provide a daytime phone number where you can be reached. A valid registered receipt is required under the Limited Warranty.

**IF REPAIR IS NEEDED DURING THE WARRANTY PERIOD, THE PURCHASER WILL BE REQUIRED TO FURNISH A SALES RECEIPT/ PROOF OF PURCHASE INDICATING DATE OF PURCHASE, AMOUNT PAID AND PLACE OF PURCHASE. CUSTOMER WILL BE CHARGED FOR THE REPAIR OF ANY UNIT RECEIVED WITHOUT SUCH PROOF OF PURCHASE.**

### Limited Warranty Limits And Exclusions

This warranty ONLY COVERS failures due to defects in materials or workmanship, and DOES NOT COVER normal wear and tear or cosmetic damage. The warranty ALSO DOES NOT COVER damages which occurred in shipment, or failures which are caused by products not supplied by the warrantor, or failures which result from accidents, misuse, abuse, neglect, mishandling, misapplication, alteration, faulty installation,

set-up adjustments, misadjustment of consumer controls, improper maintenance, power line surge, lightning damage, modification, introduction of sand, humidity or liquids, commercial use such as hotel, office, restaurant, or other business or rental use of the product, or service by anyone other than a Factory Service Center or other Authorized Servicer, or damage that is attributable to acts of God.

**THERE ARE NO EXPRESS WARRANTIES EXCEPT AS LISTED UNDER "LIMITED WARRANTY COVERAGE".**

**THE WARRANTOR IS NOT LIABLE FOR INCIDENTAL OR CONSEQUENTIAL DAMAGES RESULTING FROM THE USE OF THIS PRODUCT, OR ARISING OUT OF ANY BREACH OF THIS WARRANTY.** (As examples, this excludes damages for lost time, travel to and from the servicer, loss of or damage to media or images, data or other memory or recorded content. The items listed are not exclusive, but for illustration only.)  
**ALL EXPRESS AND IMPLIED WARRANTIES, INCLUDING THE WARRANTY OF MERCHANTABILITY, ARE LIMITED TO THE PERIOD OF THE LIMITED WARRANTY.**

Some states do not allow the exclusion or limitation of incidental or consequential damages, or limitations on how long an implied warranty lasts, so the exclusions may not apply to you.

This warranty gives you specific legal rights and you may also have other rights which vary from state to state. If a problem with this product develops during or after the warranty period, you may contact your dealer or Service Center. If the problem is not handled to your satisfaction, then write to the warrantor's Consumer Affairs Department at the addresses listed for the warrantor.

**PARTS AND SERVICE, WHICH ARE NOT COVERED BY THIS LIMITED WARRANTY, ARE YOUR RESPONSIBILITY.**

### Customer Services Directory (United States and Puerto Rico)

**Obtain Product Information and Operating Assistance; locate your nearest Dealer or Service Center; purchase Parts and Accessories; or make Customer Service and Literature requests by visiting our Web Site at:**

<http://www.panasonic.com/help>  
or, contact us via the web at:  
<http://www.panasonic.com/contactinfo>

You may also contact us directly at:  
1-800-211-PANA (7262)  
Monday-Friday 9am-9pm,  
Saturday-Sunday 10am-7pm EST

**For hearing or speech impaired TTY users, TTY: 1-877-833-8855**

### Accessory Purchases (United States and Puerto Rico)

Purchase Parts, Accessories and Instruction Books online for all Panasonic Products by visiting our Web Site at:

<http://www.pstc.panasonic.com>  
Or, send your request by E-mail to:  
[npcparts@us.panasonic.com](mailto:npcparts@us.panasonic.com)

You may also contact us directly at:  
1-800-332-5368 (Phone) 1-800-237-9080 (Fax Only)  
(Monday-Friday 9am-9pm EST)

Panasonic Service and Technology Company  
20421 84th Avenue South, Kent, WA 98032  
(We accept Visa, MasterCard, Discover Card, American Express, and Personal Checks)

**For hearing or speech impaired TTY users, TTY: 1-866-605-1277**

As of December 2010

### User memo:

DATE OF PURCHASE	_____
DEALER NAME	_____
DEALER ADDRESS	_____
_____	_____
TELEPHONE NUMBER	_____

The model number and serial number of this product can be found on either the back or the bottom of the unit.

Please note them in the space provided below and keep for future reference.

MODEL NUMBER \_\_\_\_\_  
SERIAL NUMBER \_\_\_\_\_

# Limited Warranty (ONLY FOR CANADA)

Panasonic Canada Inc.  
5770 Ambler Drive, Mississauga, Ontario L4W 2T3

## PANASONIC PRODUCT - LIMITED WARRANTY EXCHANGE PROGRAM

Panasonic Canada Inc. warrants this product to be free from defects in material and workmanship under normal use and for a period as stated below from the date of original purchase agrees to, at its option either (a) repair your product with new or refurbished parts, (b) replace it with a new or a refurbished equivalent value product, or (c) refund your purchase price. The decision to repair, replace or refund will be made by Panasonic Canada Inc.

<b>Panasonic Portable / Clock Radio (without Tape, CD, MD)</b>	<b>One (1) year</b>
<b>Panasonic Audio Product</b>	<b>One (1) year</b>
<b>Panasonic DVD Product</b>	<b>One (1) year</b>
<b>Accessories including rechargeable batteries</b>	<b>Ninety (90) days</b>

This warranty is given only to the original purchaser, or the person for whom it was purchased as a gift, of a Panasonic brand product mentioned above sold by an authorized Panasonic dealer in Canada and purchased and used in Canada, which product was not sold "as is", and which product was delivered to you in new condition in the original packaging.

**IN ORDER TO BE ELIGIBLE TO RECEIVE WARRANTY SERVICE HEREUNDER, A PURCHASE RECEIPT OR OTHER PROOF OF DATE OF ORIGINAL PURCHASE, SHOWING AMOUNT PAID AND PLACE OF PURCHASE IS REQUIRED**

### LIMITATIONS AND EXCLUSIONS

This warranty ONLY COVERS failures due to defects in materials or workmanship, and DOES NOT COVER normal wear and tear or cosmetic damage. The warranty ALSO DOES NOT COVER damages which occurred in shipment, or failures which are caused by products not supplied by Panasonic Canada Inc., or failures which result from accidents, misuse, abuse, neglect, mishandling, misapplication, alteration, faulty installation, set-up adjustments, misadjustment of consumer controls, improper maintenance, power line surge, lightning damage, modification, introduction of sand, humidity or liquids, commercial use such as hotel, office, restaurant, or other business or rental use of the product, or service by anyone other than an Authorized Servicer, or damage that is attributable to acts of God.

Dry cell batteries are also excluded from coverage under this warranty.

THIS EXPRESS, LIMITED WARRANTY IS IN LIEU OF ALL OTHER WARRANTIES, EXPRESS OR IMPLIED, INCLUDING ANY IMPLIED WARRANTIES OF MERCHANTABILITY AND FITNESS FOR A PARTICULAR PURPOSE. IN NO EVENT WILL PANASONIC CANADA INC. BE LIABLE FOR ANY SPECIAL, INDIRECT OR CONSEQUENTIAL DAMAGES RESULTING FROM THE USE OF THIS PRODUCT OR ARISING OUT OF ANY BREACH OF ANY EXPRESS OR IMPLIED WARRANTY. (As examples, this warranty excludes damages for lost time, travel to and from the Authorized Servicer, loss of or damage to media or images, data or other memory or recorded content. This list of items is not exhaustive, but for illustration only.)

In certain instances, some jurisdictions do not allow the exclusion or limitation of incidental or consequential damages, or the exclusion of implied warranties, so the above limitations and exclusions may not be applicable. This warranty gives you specific legal rights and you may have other rights which vary depending on your province or territory.

### CONTACT INFORMATION

For product information and operation assistance, please contact:

Our Customer Care Centre: Telephone #: 1-800-561-5505  
Fax #: (905) 238-2360  
Email link: "Support → contact us → email" on [www.panasonic.ca](http://www.panasonic.ca)

For defective product exchange within the warranty period, please contact the original dealer or our Customer Care Centre.

<b>CAUTION -</b>	VISIBLE AND INVISIBLE LASER RADIATION WHEN OPEN - AND INTERLOCKS DEFEATED - DO NOT STARE INTO BEAM. FOR 21 (Class I) a)
<b>CAUTION -</b>	CLASS 1M VISIBLE AND INVISIBLE LASER RADIATION WHEN OPEN AND INTERLOCKS DEFEATED, DO NOT VIEW DIRECTLY WITH OPTICAL INSTRUMENTS. E60825-1 +42/ Class 1M
<b>ATTENTION -</b>	RAYONNEMENT LASER VISIBLE ET INVISIBLE. CLASSE 1M. EN CAS D'OUVERTURE ET LORSQUE LA SECURITE EST NEUTRALISEE, NE PAS REGARDER DIRECTEMENT A L'IDE D'INSTRUMENTS D'OPTIQUE.
<b>VARING -</b>	KLASSE 1M SYNLIG OCH OSYNLIG LASERSTRÅLING NÅR DENNA DEL ÄR ÖPPNAD OCH SPÄRREN ÅR URKOPPLAD, BETRÄKTA ELS STRÅLEN DIREKT GENOM OPTISKE INSTRUMENT.
<b>FORSIGTIG -</b>	SYNLIG OG USYNLIG LASERSTRÅLING KLASSE 1M. NÅR LÅGET ER ÅBENT OG SIKKERHEITS ÅBRYDERE ER UDE AF FUNKTION, LINDGÅ AT SE LIGE PÅ MED OPTISKE INSTRUMENTER.
<b>VAROI -</b>	AVATTARESSA JA SUOJALUKITUS OHTETTRESSA OLET ALTTIINA LUOKAN 1M NÄKYVÄÄ JA NÄKYMÄTÖNÄ LASERSTRÄLMIÄ, ALA KATSO OPTISIA LAITTEITA JA SUORAN KATSEEN.
<b>VORSICHT -</b>	SICHTBARE LASERSTRÄHLUNG KLASSE 1M. WEIN ABSCHEIDUNG GEÖFFNET UND SICHERHEITSVEREDELUNGEN ÜBERBRÜCKT, NICHT DIREKT MIT OPTISCHEN INSTRUMENTEN BETRACHTEN.
<b>PRECAUCION -</b>	RADIACION LASER VISIBLE E INVISIBLE CLASE 1M AL ESTAR ABIERTO Y CON LOS INTERRUPTORES DE BLOQUEO DESHABILADOS, NO MIRAR DIRECTAMENTE CON INSTRUMENTOS OPTICOS.
<b>注意 -</b>	打开时及脱光锁时有可能可见及不可见激光照射。避免光束照射。 B0LXST0304

(Inside of product)

**-If you see this symbol-**

**Information on Disposal in other Countries outside the European Union**



This symbol is only valid in the European Union. If you wish to discard this product, please contact your local authorities or dealer and ask for the correct method of disposal.

**Listening Caution**



Selecting fine audio equipment such as the unit you've just purchased is only the start of your musical enjoyment. Now it's time to consider how you can maximize the fun and excitement your equipment offers. This manufacturer and the Electronic Industries Association's Consumer Electronics Group want you to get the most out of your equipment by playing it at a safe level. One that lets the sound come through loud and clear without annoying blaring or distortion—and, most importantly, without affecting your sensitive hearing.

We recommend that you avoid prolonged exposure to excessive noise.

Sound can be deceiving. Over time your hearing "comfort level" adapts to higher volumes of sound. So what sounds "normal" can actually be loud and harmful to your hearing.

Guard against this by setting your equipment at a safe level BEFORE your hearing adapts.

To establish a safe level:

- Start your volume control at a low setting.
- Slowly increase the sound until you can hear it comfortably and clearly, and without distortion.

Once you have established a comfortable sound level:

- Leave it there.

Taking a minute to do this now will help to prevent hearing damage or loss in the future. After all, we want you listening for a lifetime.



As an ENERGY STAR® Partner,\* Panasonic has determined that this product meets the ENERGY STAR® guidelines for energy efficiency.

\*For Canada only: The word "Participant" is used in place of the word "Partner".

Panasonic Consumer Electronics Company,  
Division of Panasonic Corporation of North America  
One Panasonic Way, Secaucus,  
New Jersey 07094  
<http://www.panasonic.com>

Panasonic Canada Inc.  
5770 Ambler Drive  
Mississauga, Ontario  
L4W 2T3  
[www.panasonic.ca](http://www.panasonic.ca)

