



Owner's Manual Compact Speaker System

Model No. SC-MC07



Thank you for purchasing this product.
For optimum performance and safety, please read these instructions carefully.
Please keep this manual for future reference.

If you have any questions, contact:
U.S.A. and Puerto Rico : 1-800-211-PANA (7262)

P

Panasonic Consumer Marketing Company of North America,
Division of Panasonic Corporation of North America

En

One Panasonic Way, Secaucus,
New Jersey 07094
<http://www.panasonic.com>

© Panasonic Corporation 2012
Printed in China

Accessories

Check the supplied accessories before using this unit.

1 USB cable (RFE0242)

- Product numbers provided in these Operating Instructions correct as of February 2012. These may be subject to change.
- Do not use any other USB cables except the supplied one.

Control Reference Guide

Front

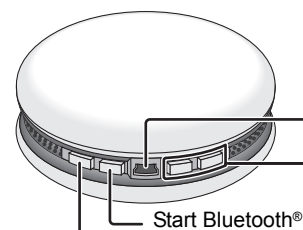
- When you listen to the sound, face the front side of the unit. (The speaker is built into the front side.)



Status Indicator

- Blue: Power on and Bluetooth® mode
- Red: Low battery

Rear



USB port

Adjust the volume

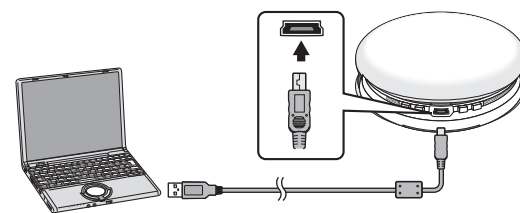
Start Bluetooth® pairing mode

Power on/off (⏻/⏻)

Power supply preparation

Please connect to a PC using the USB cable (supplied) or use batteries (not supplied).

Connecting the USB cable

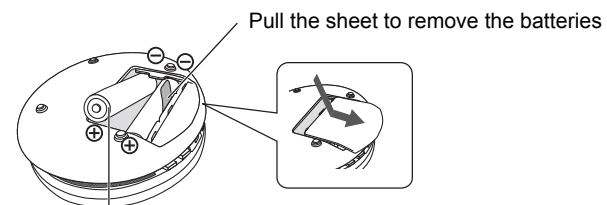


USB cable (supplied)

- Do not use any other USB cables except the supplied one. (Operation is not guaranteed.)
- Do not connect two or more USB devices to a PC. (Operation is not guaranteed.)

Inserting the batteries

Insert so the poles (+ and -) match those in this unit.



LR6, AA (Alkaline)
(not supplied)

- Use alkaline batteries.
- If the battery is low, the indicator will change from blue to red.

Note

- Connection to a USB port of a PC provides the unit with the power supply only; communication with the PC or charging of the unit does not work.
- USB is higher priority than battery, when this unit is connected to a PC and the battery is inserted at the same time.

Listening to audio from a Bluetooth® device

By using the Bluetooth® connection, you can listen to the sound from the Bluetooth® audio device with this unit wirelessly.

Preparation

Switch on the Bluetooth® feature of the device and put the device near this unit. Read the operating instructions of Bluetooth® audio device for its operation.

Pair with another device and listen to audio

- 1 Press [⏻/⏻] to turn this unit on.**
 - If using this unit for the first time, please go to Step 3.
- 2 Press and hold [⏻] for 2 seconds.**
 - The indicator will blink fast and the unit will enter pairing standby mode.
 - When this unit is operated on batteries, it functions as a battery check indicator. (See page 3)
- 3 In the Bluetooth® pairing settings of the Bluetooth® device, select to pair with "SC-MC07".**
 - Depending on the device, connection may take place automatically when pairing is selected. In this case, go to Step 5.
 - If prompted for a passkey, input "0000".
- 4 In the Bluetooth® connecting settings of the Bluetooth® device, select to connect with "SC-MC07".**
 - When the connection is made, the indicator on the unit lights up.
- 5 Start playback on the Bluetooth® device.**
 - Adjust the volume using the [- VOL +] buttons on the unit.
 - When the maximum or minimum volume is reached, you will be notified by a beep sound.

Disconnecting

- Switch off this unit or the device.
- Stop / disable the Bluetooth® transmission of the device.

Listening to audio from a paired device

When this unit is turned on, the indicator will blink slowly indicating that the unit is in connection standby mode. Please perform Steps 4 and 5.

- When the power is turned on, this unit is connected to the last-used Bluetooth® device. At this point, please perform Step 5.

Note

- This unit can only connect to one device at a time.
- You can pair up to 6 devices with this unit. If a 7th device is paired, the device with the oldest connection history will be replaced.
- Panasonic bears no responsibility for data and/or information that can possibly be compromised during a wireless transmission.

Switching transmission

You can change the transmission speed to prioritise transmission quality or sound quality.

1 Stop or disable the Bluetooth® transmission of the device.

- 2 Press [⏻].**
MODE 1 → MODE 2: The Beep sound twice
MODE 2 → MODE 1: The Beep sound once
 - **MODE 1:** For stable communication.
 - **MODE 2:** For good audio quality.

Note

- The default setting is MODE1.
- To listen to audio from this unit, please reconnect using Bluetooth®.

Auto Power Off

This unit automatically switches off if there is no audio input and you do not use it for approximately 10 minutes.

Maintenance

To clean this unit, wipe with a soft, dry cloth.

Note

- Never use alcohol, paint thinner or benzine to clean this unit.
- Before using chemically treated cloth, read the instructions that came with the cloth carefully.

Troubleshooting

Before requesting service, make the following checks.

If you are in doubt about some of the check points, or if the solutions indicated in the following guide do not solve the problem, consult your dealer for instructions.

The device cannot be connected.

- The pairing of the device was unsuccessful. Read the instructions and try again.
- The pairing of the device has been replaced. Do pairing again.
- Delete the pairing information for this unit from the Bluetooth® device, then perform the pairing operation again. (See page 1)
- Make sure that this unit is not connected to a different device.

The device is connected but audio cannot be heard through this unit.

- For some built-in Bluetooth® devices, you have to set the audio output to "SC-MC07" manually. Read the operating instructions of the device for details.

Sound from the device is cut off.

- Sound may be disrupted if signals are blocked. When you hold this unit, do not fully cover this unit with your palm, etc.
- The device is out of the 10 m communication range. Move the device nearer to this unit. (See page 9)
- Remove any obstacle between this unit and the device.
- Switch off any wireless LAN device.
- Select "MODE 1" for stable communication. (See page 1, Switching transmission)
- If the indicator lights up red, please replace the batteries. (See page 1)

The power supply of the unit cuts out or you hear a noise.

- If you turn the volume up too high when the unit is connected to your computer, you may find that the unit is turned off or you may hear a noise. In this case, please turn down the volume of the unit.

When you turn on the unit, audio is not output and the indicator blinks alternately in red and blue.

- A problem has occurred. Disconnect the USB cable from the speaker and remove the batteries. After waiting for a few moments, reconnect the USB cable or reinsert the batteries and turn on the power. If the problem continues, contact the dealer.

When the following situations occur, refer to the instructions below to reset the memory:

- There is no response when buttons are pressed.
- You want to clear and reset the memory.

- 1 Press [⏻/⏻] to turn the power on.
- 2 Press and hold [⏻/⏻] for about 10 seconds until the indicator turns off.
 - All the settings are set back to the factory preset.
 - The pairing device information will have been deleted by the reset, so it will be necessary to perform pairing again. Delete the pairing information for this unit from the Bluetooth® device, then perform the pairing operation again. (See page 1)

Specifications

Amplifier section	General
RMS output power:	Power supply:
2 W (8 Ω) 1 kHz, 5 % THD	Panasonic alkaline battery:
L ch: 1 W (8 Ω) 1 kHz, 5 % THD	LR6 × 2, DC 3.0 V
R ch: 1 W (8 Ω) 1 kHz, 5 % THD	USB power supply: DC 5.0 V
Total harmonic distortion: 0.15 % (1 kHz)	Operating temperature range:
S/N ratio: 87 dB (1 kHz, 20 kHz LPF)	0 °C to +40 °C
Speaker:	Operating humidity range:
φ 36 mm (8 Ω) × 2	20% to 80% RH (no condensation)

Dimensions (W x H x D):
103 mm x 41.9 mm x 103 mm

Bluetooth® section	Mass:
Bluetooth® system specification:	Approx. 216 g (with batteries)
Ver. 2.1 + EDR	Approx. 170 g (without batteries)
Wireless equipment classification:	
Class 2 (2.5 mW)	
Supported profiles:	
A2DP	
Frequency band:	
2402 - 2480 MHz	
(Adaptive Frequency Hopping)	
Driving distance:	
10 m Line of Sight	
(iPhone 4, at height 1 m, in "MODE 1")	

Battery duration time:
Approx. 4 hours
(Panasonic alkaline battery LR6 Type)

- Note**
- Specifications are subject to change without notice. Mass and dimensions are approximate.
 - Total harmonic distortion is measured by the digital spectrum analyzer.

Product identification marking is located on the bottom of the unit.

Notes on Speakers

- These speakers do not have magnetic shielding. Do not put them near devices easily influenced by magnetism.
- When you play at high levels for a long period, it can cause damage to the unit and decrease the life of the unit.
- Decrease the volume when you play distorted sound to prevent damage.

Safety precautions

WARNING

- To reduce the risk of fire, electric shock or product damage,
- Do not expose this unit to rain, moisture, dripping or splashing.
 - Do not place objects filled with liquids, such as vases, on this unit.
 - Use only the recommended accessories.
 - Do not remove covers.
 - Do not repair this unit by yourself. Refer servicing to qualified service personnel.

CAUTION

- Unit**
- Do not place sources of naked flames, such as lighted candles, on this unit.
 - This unit may receive radio interference caused by mobile telephones during use. If such interference occurs, please increase separation between this unit and the mobile telephone.

Batteries

- Danger of explosion if battery is incorrectly replaced. Replace only with the type recommended by the manufacturer.
- Mishandling of batteries can cause electrolyte leakage and may cause a fire.
 - Do not mix old and new batteries or different types at the same time.
 - Do not heat or expose to flame.
 - Do not leave the battery(ies) in a car exposed to direct sunlight for a long period of time with doors and windows closed.
 - Do not take apart or short circuit.
 - Do not recharge alkaline or manganese batteries.
 - Do not use batteries if the covering has been peeled off.
 - Remove batteries if you do not intend to use this unit for a long period of time. Store in a cool, dark place.
- When disposing the batteries, please contact your local authorities or dealer and ask for the correct method of disposal.

FCC Note:

This equipment has been tested and found to comply with the limits for a Class B digital device, pursuant to Part 15 of the FCC Rules. These limits are designed to provide reasonable protection against harmful interference in a residential installation. This equipment generates, uses, and can radiate radio frequency energy and, if not installed and used in accordance with the instructions, may cause harmful interference to radio communications. However, there is no guarantee that interference will not occur in a particular installation. If this equipment does cause harmful interference to radio or television reception, which can be determined by turning the equipment off and on, the user is encouraged to try to correct the interference by one or more of the following measures:

- Reorient or relocate the receiving antenna.
- Increase the separation between the equipment and receiver.
- Connect the equipment into an outlet on a circuit different from that to which the receiver is connected.
- Consult the dealer or an experienced radio/TV technician for help.

FCC Caution: To assure continued compliance, follow the attached installation instructions and use only shielded interface cables with ferrite core when connecting to computer or peripheral devices.

Any changes or modifications not expressly approved by the party responsible for compliance could void the user's authority to operate this equipment.

Declaration of Conformity
Trade Name: Panasonic
Model No.: SC-MC07

Responsible Party:
Panasonic Corporation of North America
One Panasonic Way, Secaucus, NJ 07094

Support Contact:
Panasonic Consumer Marketing Company of North America
[1-800-211-PANA \(7262\)](http://www.panasonic.com/help)

This device complies with Part 15 of the FCC Rules. Operation is subject to the following two conditions:

- This device may not cause harmful interference, and
- This device must accept any interference received, including interference that may cause undesired operation.

Limited Warranty (ONLY FOR U.S.A. AND PUERTO RICO)

Panasonic Consumer Marketing Company of North America,
Division of Panasonic Corporation of North America
One Panasonic Way, Secaucus, New Jersey 07094

Panasonic Home Audio Products Limited Warranty

Limited Warranty Coverage (For USA and Puerto Rico Only)

If your product does not work properly because of a defect in materials or workmanship, Panasonic Consumer Marketing Company of North America (referred to as "the warrantor") will, for the length of the period indicated on the chart below, which starts with the date of original purchase ("warranty period"), at its option either (a) repair your product with new or refurbished parts, (b) replace it with a new or a refurbished equivalent value product, or (c) refund your purchase price. The decision to repair, replace or refund will be made by the warrantor.

Product or Part Name	Parts	Labor
Audio Products (except items below)	1 year	1 year
DVD Home Theater System	1 year	1 year
Home Theater Audio System	1 year	1 year
SD Memory Cards, Rechargeable Battery Packs (defective exchange)	90 days	Not Applicable

During the "Labor" warranty period there will be no charge for labor. During the "Parts" warranty period, there will be no charge for parts. This Limited Warranty excludes both parts and labor for non-rechargeable batteries, antennas, and cosmetic parts (cabinet). This warranty only applies to products purchased and serviced in the United States or Puerto Rico. This warranty is extended only to the original purchaser of a new product which was not sold "as is."

Carry-In or Mail-In Service

To find a service center please visit <http://www.panasonic.com/help> or call 1-800-211-PANA (7262).

When shipping the unit, carefully pack, include all supplied accessories listed in the Owner's Manual, and send it prepaid, adequately insured and packed well in a carton box. When shipping Lithium Ion batteries please visit our Web Site at www.panasonic.com/BatteryHandling as Panasonic is committed to providing the most up to date information. Include a letter detailing the complaint, a return address and provide a daytime phone number where you can be reached. A valid registered receipt is required under the Limited Warranty.

IF REPAIR IS NEEDED DURING THE WARRANTY PERIOD, THE PURCHASER WILL BE REQUIRED TO FURNISH A SALES RECEIPT/PROOF OF PURCHASE INDICATING DATE OF PURCHASE, AMOUNT PAID, AND PLACE OF PURCHASE. CUSTOMER WILL BE CHARGED FOR THE REPAIR OF ANY UNIT RECEIVED WITHOUT SUCH PROOF OF PURCHASE.

Limited Warranty Limits And Exclusions

This warranty ONLY COVERS failures due to defects in materials or workmanship, and DOES NOT COVER normal wear and tear or cosmetic damage. The warranty ALSO DOES NOT COVER damages which occurred in shipment, or failures which are caused by products not supplied by the warrantor, or failures which result from accidents, misuse, abuse, neglect, mishandling, misapplication, alteration, faulty installation, set-up adjustments, misadjustment of consumer controls, improper maintenance, power line surge, lightning damage, modification, introduction of sand, humidity or liquids, commercial use such as hotel, office, restaurant, or other business or rental use of the product, or service by anyone other than a Factory Service Center or other Authorized Servicer, or damage that is attributable to acts of God.

THERE ARE NO EXPRESS WARRANTIES EXCEPT AS LISTED UNDER "LIMITED WARRANTY COVERAGE".

THE WARRANTOR IS NOT LIABLE FOR INCIDENTAL OR CONSEQUENTIAL DAMAGES RESULTING FROM THE USE OF THIS PRODUCT, OR ARISING OUT OF ANY BREACH OF THIS WARRANTY.

(As examples, this excludes damages for lost time, travel to and from the servicer, loss of or damage to media or images, data or other memory or recorded content. The items listed are not exclusive, but for illustration only.)

ALL EXPRESS AND IMPLIED WARRANTIES, INCLUDING THE WARRANTY OF MERCHANTABILITY, ARE LIMITED TO THE PERIOD OF THE LIMITED WARRANTY.

Some states do not allow the exclusion or limitation of incidental or consequential damages, or limitations on how long an implied warranty lasts, so the exclusions may not apply to you. This warranty gives you specific legal rights and you may also have other rights which vary from state to state. If a problem with this product develops during or after the warranty period, you may contact your dealer or Service Center. If the problem is not handled to your satisfaction, then write to the warrantor's Consumer Affairs Department at the addresses listed for the warrantor.

PARTS AND SERVICE, WHICH ARE NOT COVERED BY THIS LIMITED WARRANTY, ARE YOUR RESPONSIBILITY.

Customer Services Directory (United States and Puerto Rico)

Obtain Product Information and Operating Assistance; locate your nearest Dealer or Service Center; purchase Parts and Accessories; or make Customer Service and Literature requests by visiting our Web Site at:
<http://www.panasonic.com/help>
or, contact us via the web at:
<http://www.panasonic.com/contactinfo>
You may also contact us directly at:
1-800-211-PANA (7262)
Monday-Friday 9am-9pm,
Saturday-Sunday 10am-7pm EST

For hearing or speech impaired TTY users, TTY: 1-877-833-8855

Accessory Purchases (United States and Puerto Rico)

Purchase Parts, Accessories and Instruction Books online for all Panasonic Products by visiting our Web Site at:
<http://www.pslc.panasonic.com>
Or, send your request by E-mail to:
pslcparts@us.panasonic.com
You may also contact us directly at:
1-800-332-5368 (Phone) 1-800-237-9080 (Fax Only)
(Monday-Friday 9am-9pm EST)
Panasonic National Parts Center
20421 94th Ave. S., Kent, WA 98032
(We accept Visa, MasterCard, Discover Card, American Express)

For hearing or speech impaired TTY users, TTY: 1-866-605-1277

As of January 2012