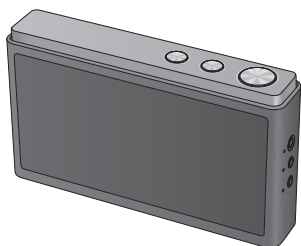


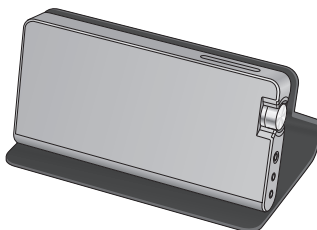
Panasonic®

Owner's Manual Wireless Speaker System

Model No. SC-NA30
SC-NA10



SC-NA30



SC-NA10



Thank you for purchasing this product.
Please read these instructions carefully before using this product, and save this manual for future use.

Register online at www.panasonic.com/register (U.S. customers only)

If you have any questions, contact:
U.S.A. and Puerto Rico : 1-800-211-PANA (7262)
Canada : 1-800-561-5505


P | PC

VQT5C36-1

Confidential until
2013/08/27

IMPORTANT SAFETY INSTRUCTIONS

Read these operating instructions carefully before using the unit. Follow the safety instructions on the unit and the applicable safety instructions listed below. Keep these operating instructions handy for future reference.

- 1 Read these instructions.
- 2 Keep these instructions.
- 3 Heed all warnings.
- 4 Follow all instructions.
- 5 Do not use this apparatus near water.
- 6 Clean only with dry cloth.
- 7 Do not block any ventilation openings. Install in accordance with the manufacturer's instructions.
- 8 Do not install near any heat sources such as radiators, heat registers, stoves, or other apparatus (including amplifiers) that produce heat.
- 9 Do not defeat the safety purpose of the polarized or grounding-type plug. A polarized plug has two blades with one wider than the other. A grounding-type plug has two blades and a third grounding prong. The wide blade or the third prong are provided for your safety. If the provided plug does not fit into your outlet, consult an electrician for replacement of the obsolete outlet.
- 10 Protect the power cord from being walked on or pinched particularly at plugs, convenience receptacles, and the point where they exit from the apparatus.
- 11 Only use attachments/accessories specified by the manufacturer.
- 12 Use only with the cart, stand, tripod, bracket, or table specified by the manufacturer, or sold with the apparatus. When a cart is used, use caution when moving the cart/apparatus combination to avoid injury from tip-over. 
- 13 Unplug this apparatus during lightning storms or when unused for long periods of time.
- 14 Refer all servicing to qualified service personnel. Servicing is required when the apparatus has been damaged in any way, such as power-supply cord or plug is damaged, liquid has been spilled or objects have fallen into the apparatus, the apparatus has been exposed to rain or moisture, does not operate normally, or has been dropped.

VQT5C36
2

Precautions

■ WARNING

Unit

To reduce the risk of fire, electric shock or product damage,

- Do not expose this unit to rain, moisture, dripping or splashing.
- Do not place objects filled with liquids, such as vases, on this unit.
- Use only the recommended accessories.
- Do not remove the cover except disassembling for discarding.
- Do not repair this unit by yourself. Refer servicing to qualified service personnel.

AC adaptor

The power plug is the disconnecting device. Install this unit so that the power plug can be unplugged from the socket outlet immediately.

■ CAUTION

Unit

- Do not throw.
- Do not hit this unit to anything. Do not apply strong pressure to this unit. External case may break when strong impact is applied, causing to damage or malfunction.
- Do not leave the unit in a car exposed to direct sunlight for a long period of time with doors and windows closed.
- Product identification marking is located on the bottom of the unit.
- Keep the volume knob out of reach of children to prevent swallowing.
- Do not use this unit continuously with high volume sound. This may deteriorate the sound quality of the speaker and severely shorten the life of the speaker.

AC adaptor

This AC adaptor operates on AC between 100 V and 240 V.

But

- In the U.S.A. and Canada, the AC adaptor must be connected to a 120 V AC power supply only.
- When connecting to an AC supply outside of the U.S.A. or Canada, use a plug adaptor to suit the AC outlet configuration.

Battery pack (Lithium ion battery pack)

This unit has a built-in battery.
The following is the caution for removing the battery when disposing of this unit (⇒ 18, 19).

- Do not heat or expose to flame.
- Do not short circuit.
- Do not disassemble, crush.
- Do not re-use.
- Do not place in microwave ovens.

THE FOLLOWING APPLIES IN THE U.S.A. AND CANADA

This device complies with Part 15 of FCC Rules and Industry Canada licence-exempt RSS standard(s).

Operation is subject to the following two conditions:

- (1) This device may not cause interference, and
- (2) this device must accept any interference, including interference that may cause undesired operation of this device.

SC-NA10

FCC ID:ACJ-SC-NA10

IC: 216A-SCNA10

SC-NA30

FCC ID:ACJ-SC-NA30

IC: 216A-SCNA30

This equipment complies with FCC/IC radiation exposure limits set forth for an uncontrolled environment and meets the FCC radio frequency (RF) Exposure Guidelines and RSS-102 of the IC radio frequency (RF) Exposure rules. This equipment has very low levels of RF energy that it deemed to comply without maximum permissive exposure evaluation (MPE). But it is desirable that it should be installed and operated keeping the radiator at least 20 cm or more away from person's body (excluding extremities: hands, wrists, feet and ankles).



A lithium ion battery that is recyclable powers the product you have purchased. Please call 1-800-8-BATTERY for information on how to recycle this battery.

THE FOLLOWING APPLIES ONLY IN THE U.S.A.**FCC Note:**

This equipment has been tested and found to comply with the limits for a Class B digital device, pursuant to Part 15 of the FCC Rules. These limits are designed to provide reasonable protection against harmful interference in a residential installation. This equipment generates, uses and can radiate radio frequency energy and, if not installed and used in accordance with the instructions, may cause harmful interference to radio communications. However, there is no guarantee that interference will not occur in a particular installation. If this equipment does cause harmful interference to radio or television reception, which can be determined by turning the equipment off and on, the user is encouraged to try to correct the interference by one or more of the following measures:

- Reorient or relocate the receiving antenna.
- Increase the separation between the equipment and receiver.
- Connect the equipment into an outlet on a circuit different from that to which the receiver is connected.
- Consult the dealer or an experienced radio/TV technician for help.

FCC Caution: To assure continued compliance, follow the attached installation instructions and use only shielded interface cables when connecting to peripheral devices.

Any changes or modifications not expressly approved by the party responsible for compliance could void the user's authority to operate this equipment.

This device complies with Part 15 of the FCC Rules. Operation is subject to the following two conditions:

- (1) This device may not cause harmful interference, and
- (2) this device must accept any interference received, including interference that may cause undesired operation.

Declaration of Conformity

Trade Name: Panasonic

Model No.: SC-NA10, SC-NA30

Responsible Party:

Panasonic Corporation of North America
Two Riverfront Plaza, Newark, NJ 07102-5490

Support Contact Telephone No.:
1-800-211-PANA (7262)

THE FOLLOWING APPLIES ONLY IN CANADA.

CAN ICES-3(B)/NMB-3(B)

About Bluetooth®

Panasonic bears no responsibility for data and/or information that is compromised during a wireless transmission.

Frequency band used

This unit uses the 2.4 GHz frequency band.

Certification of this device

- This unit conforms to frequency restrictions and has received certification based on frequency laws. Thus, a wireless permit is not necessary.
- The actions below are punishable by law in some countries:
 - Taking apart/modifying the unit.
 - Removing specification indications.

Restrictions of use

- Wireless transmission and/or usage with all Bluetooth® equipped devices is not guaranteed.
- All devices must conform to standards set by Bluetooth SIG, Inc.
- Depending on the specifications and settings of a device, it can fail to connect or some operations can be different.
- This system supports Bluetooth® security features. But depending on the operating environment and/or settings, this security is possibly not sufficient. Transmit data wirelessly to this system with caution.
- This system cannot transmit data to a Bluetooth® device.

Range of use

Use this device at a maximum range of 10 m (33 ft). The range can decrease depending on the environment, obstacles or interference.

Interference from other devices

- This unit may not function properly and troubles such as noise and sound jumps may arise due to radio wave interference if this unit is located too close to other Bluetooth® devices or the devices that use the 2.4 GHz band.
- This unit may not function properly if radio waves from a nearby broadcasting station, etc. is too strong.

Intended usage

- This unit is for normal, general use only.
- Do not use this system near an equipment or in an environment that is sensitive to radio frequency interference (example: airports, hospitals, laboratories, etc).

VQT5C36
4

Licenses

- Android and Google Play are trademarks of Google Inc.
- The Bluetooth® word mark and logos are owned by the Bluetooth SIG, Inc. and any use of such marks by Panasonic Corporation is under license. Other trademarks and trade names are those of their respective owners.
- aptX® software is copyright CSR plc or its group companies. All rights reserved. The aptX® mark and the aptX logo are trademarks of CSR plc or one of its group companies and may be registered in one or more jurisdictions.

Maintenance

Turn off the power of this unit and wipe with dry soft cloth. Disconnect the AC adaptor when the AC adaptor is used.

- When it get very dirty, wipe off dirt with a cloth immersed in water and wrung strongly, and then wipe with dry soft cloth.
- Solvents such as benzine, thinner, alcohol, oil, detergents, etc., may cause the external case to be altered or the coating may come off, so do not use them.
- Before using chemically treated cloth, read the instructions that came with the cloth carefully.

-If you see this symbol-

Information on Disposal in other Countries outside the European Union



This symbol is only valid in the European Union. If you wish to discard this product, please contact your local authorities or dealer and ask for the correct method of disposal.

Table of contents

IMPORTANT SAFETY INSTRUCTIONS.....	2
Precautions.....	2
About Bluetooth®.....	4
Licenses.....	4
Maintenance.....	4
Accessories.....	5
Control reference guide (SC-NA30).....	6
Control reference guide (SC-NA10).....	7
About the power of this unit.....	8
About the DC OUT terminal (USB).....	9
Listening to audio from a Bluetooth® device.....	10
Connecting via Bluetooth® menu.....	10
One-Touch Connection (Connecting by NFC).....	11
Switching the communication quality.....	12
Disconnecting Bluetooth®.....	12
Using LP Mode.....	13
Using the AUX input.....	13
Auto Power Off.....	13
Receiving a call hands-free.....	14
To return to the factory preset state.....	14
Troubleshooting.....	15
Specifications.....	16
To remove the battery when disposing of this unit.....	18
Limited Warranty	
(ONLY FOR U.S.A. AND PUERTO RICO).....	20
Limited Warranty (ONLY FOR CANADA).....	22

Accessories

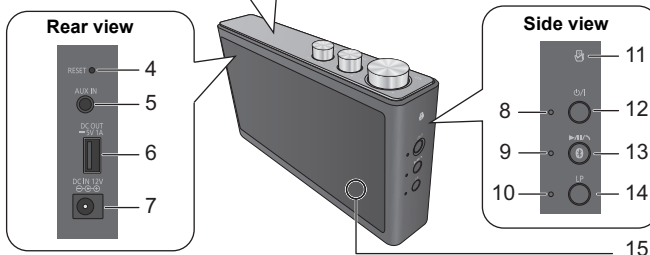
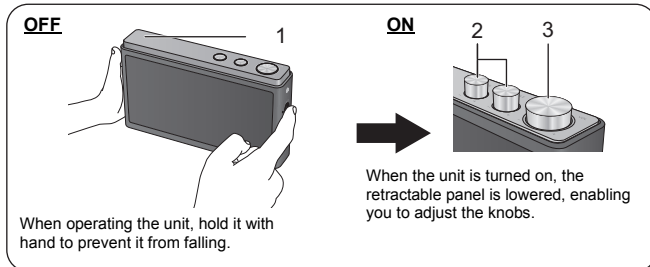
Check the supplied accessories before using this unit.

1 AC adaptor (RFEA228C-AG)

Note

- Product numbers provided in this Owner's Manual correct as of August 2013. These may be subject to change.
- Do not use AC adaptor with other equipment.
- (ONLY FOR CANADA) The enclosed Canadian French label sheet corresponds to the English display on the unit.

Control reference guide (SC-NA30)

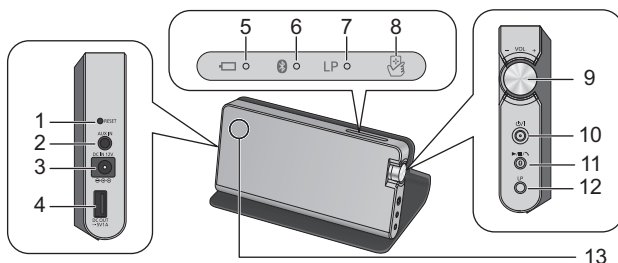
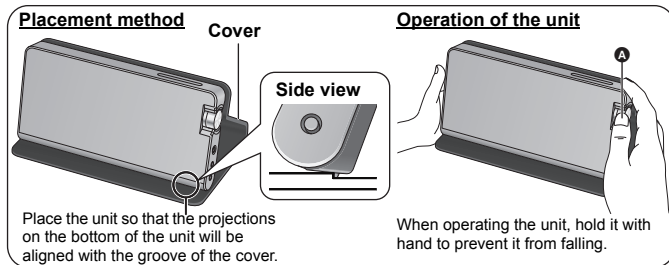


- | | |
|--|--|
| <p>1 Retractable panel</p> <p>2 BASS/TREBLE knob</p> <ul style="list-style-type: none"> • Adjusts low/high-pitched tones • Depending on the audio source being played or the volume being output, the effect may be limited. <p>3 Volume knob: Adjusts the volume</p> <ul style="list-style-type: none"> • When the maximum or minimum volume is reached, you will be notified by a beep sound. <p>4 RESET switch [RESET]</p> <ul style="list-style-type: none"> • Use a paper clip, etc., to press the switch if this unit does not operate correctly, like when you cannot turn off/on the power. <p>5 AUX IN jack (⇒ 13)</p> <p>6 DC OUT terminal</p> <ul style="list-style-type: none"> • When using this port, use a USB cable (commercially-available). (⇒ 9) <p>6 7 DC IN terminal</p> | <p>8 Battery indicator (red)</p> <p>9 Bluetooth® indicator (blue)</p> <p>10 LP Mode indicator (green)</p> <p>11 NFC touch area (⇒ 11)</p> <p>12 Standby/on switch [⏻/⏻]</p> <p>13 Bluetooth® pairing button (⇒ 10)/ Play button/Pause button/Call button (⇒ 14)</p> <p>14 LP button [LP]</p> <p>15 Microphone (⇒ 14)</p> |
|--|--|

VQT5C36

Control reference guide (SC-NA10)

■ Placement method and operation of the unit



- | | |
|---|--|
| <p>1 RESET switch [RESET]</p> <ul style="list-style-type: none"> • Use a paper clip, etc., to press the switch if this unit does not operate correctly, like when you cannot turn off/on the power. <p>2 AUX IN jack (⇒ 13)</p> <p>3 DC IN terminal</p> <p>4 DC OUT terminal</p> <ul style="list-style-type: none"> • When using this port, use a USB cable (commercially-available). (⇒ 9) <p>5 Battery indicator (red)</p> <p>6 Bluetooth® indicator (blue)</p> <p>7 LP Mode indicator (green)</p> <p>8 NFC touch area (⇒ 11)</p> | <p>9 Volume knob: Adjusts the volume</p> <ul style="list-style-type: none"> • To operate the knob, place your thumb on the knob as indicated by A, and turn it vertically. • When the maximum or minimum volume is reached, you will be notified by a beep sound. <p>10 Standby/on switch [⏻/⏻]</p> <p>11 Bluetooth® pairing button (⇒ 10)/ Play button/Pause button/Call button (⇒ 14)</p> <p>12 LP button [LP]</p> <p>13 Microphone (⇒ 14)</p> |
|---|--|

About the power of this unit

This unit has a built-in battery. Please charge the battery before using this unit for the first time.

■ Charging the battery

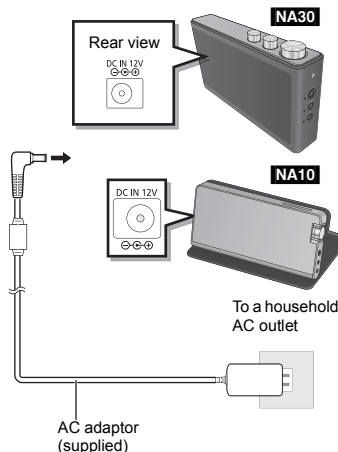
Connect the AC adaptor to the household AC outlet.

- If charging is necessary, the Battery indicator (red) lights. When charging is complete, the Battery indicator goes off.

About the battery status

Battery indicator (red) (⇒ 6, 7)	Battery status
Fast blinking (at approximately 1 second intervals)	About 5%*1
Slow blinking (at approximately 2 second intervals)	About 15%*1

*1 These battery statuses of the unit serve only as an approximation, and may vary according to the conditions of use.



Battery life in use/Battery charge time/Rechargeable times

	NA30	NA10
Battery life in use	Approx. 14 hours*2	Approx. 11 hours*2
Battery life in use (LP mode)	Approx. 20 hours*2	Approx. 20 hours*2
Battery Charge time	Approx. 3 hours*3	Approx. 3 hours*3
Rechargeable times	About 500 times	About 500 times

*2 Calculated by the test method established by the company [while connecting with Bluetooth®, using at the surrounding temperature of 25 °C (+77 °F)]

*3 When charging at the surrounding temperature of 25 °C (+77 °F) after the battery is depleted.

■ Using the unit by connecting it to a household AC outlet

Press [D/I] to turn on the unit. Connecting the AC adaptor before turning on the unit allows you to supply power from a household AC outlet during use.

- It takes longer to charge while this unit is turned on.

Note

- Do not use any other AC adaptors except the supplied one.
- When this unit is not used over a long period of time, charge the built-in battery at least once every six months to prevent it from deteriorating.
- Charging may not start if the battery level is sufficiently high even if it is not full.
- It is recommended to charge the battery in the temperature of between 10 °C and 35 °C (+50 °F to +95 °F). The Battery indicator (red) may flash and charging may not be possible when it is out of recommended temperature range.
- The battery may not charge when the temperature surrounding the battery is high during the operation or right after the operation even when it is within the recommended temperature range. In such case, stop the usage and let it cool down.
- To ensure safety, in the case of an excessive input signal, the system may be automatically interrupted and power is turned off.
- Use of the DC OUT terminal will reduce the operating time.

About the DC OUT terminal (USB)

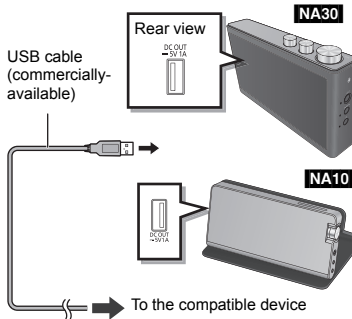
The DC OUT terminal of this unit is for supplying/charging power to a connected device (rated value: 5 V/1 A). Note that the port cannot be used for purposes other than supplying/charging power.

Note that when the unit is turned off, charging is not possible.

Preparation

Turn on the unit.

- 1 Using a USB cable (commercially-available), connect the unit and a compatible device.**
- 2 Once fully charged, remove the USB cable (commercially-available) from the DC OUT terminal.**



Note

- A cable compatible with your device is required. If a cable is supplied with your device, use the cable.
- Even if you connect a cable compatible with the DC OUT terminal of this unit, your device may not be charged. In that case, use a charger supplied with your device.
- Depending on your device, charging methods other than the specified one may not be allowed. Check the operating instructions of your device before use.
- Do not connect a device with a rated value higher than 5 V/1 A to this unit. Doing so may cause malfunction.
- To check if charging is complete, look at the screen of the connected device, etc.
- After charging, pull out the compatible cable.

Listening to audio from a Bluetooth® device

Preparation

Enable the Bluetooth® function of the device you want to connect to, and bring it closer to the unit.

- Use a Bluetooth® device within the approximate range of 10 m (33 ft.) from the unit.
- If you intend to use an NFC (Near Field Communication)-compatible Bluetooth® device, proceed to "One-Touch Connection (Connecting by NFC)" (⇒ 11).

Connecting via Bluetooth® menu

■ Pairing with Bluetooth® device

1 Press [⏻/⏻] to turn this unit on.

The Bluetooth® indicator (blue) blinks slowly.

- If this unit is being used for the first time (factory preset state):
The Bluetooth® indicator (blue) blinks fast. → The unit will enter pairing standby.
→ Skip to step 3.

2 Press and hold [⏻] until the Bluetooth® indicator (blue) blinks fast.

The unit will enter pairing standby.

3 Select "SC-NA30" or "SC-NA10" from the Bluetooth® device's Bluetooth® menu.

When the Bluetooth® device is paired and connected, the Bluetooth® indicator (blue) on the unit lights up.

- If prompted for a passkey, input "0000".
- If the Bluetooth® device need to operate the Bluetooth® pairing setting and the Bluetooth® connecting setting, operate both settings.

4 Start playing back music, a movie, etc. on your Bluetooth® device.

- The volume can be adjusted by rotating the volume knob of the unit.
When the maximum or minimum volume is reached, you will be notified by a beep sound.

■ Listening to audio from a paired device

When this unit is turned on, the Bluetooth® indicator (blue) will blink slowly indicating that the unit is in connection standby mode. Please perform Steps 3 and 4.

- When the power is turned on, this unit is connected to the last-used Bluetooth® device. At this point, please perform Step 4.

One-Touch Connection (Connecting by NFC)

For NFC-compatible Android™ devices only

Just placing an NFC (Near Field Communication)-compatible Bluetooth® device on the unit, you can complete all preparations, from registering a Bluetooth® device to establishing a connection.

Preparation

Enable the NFC function on the Bluetooth® device

- 1 Download the app “Panasonic Music Streaming” (free of charge) to your Bluetooth® device from Google Play™.**
 - Enter “Panasonic Music Streaming” in the search box of Google Play™ and search
→ select “Panasonic Music Streaming” to download the app
- 2 Start the app “Panasonic Music Streaming” on your Bluetooth® device.**
 - Follow on-screen instructions on your device.
 - Always use the latest version of the app.
- 3 Touch and hold your device on the NFC touch area of this unit.
(Until a pop-up window on your device indicates that the connection is established.)**

When the unit recognizes your device, a beep sound is emitted.

 - When the Bluetooth® device is paired and connected, the Bluetooth® indicator (blue) on the unit lights up. Once the registration and connection of the Bluetooth® device is complete, move the device away from the unit.
 - When the Bluetooth® indicator (blue) does not light up even if you have touched the NFC touch area, change the touching position.
- 4 Start playing back music, a movie, etc. on your Bluetooth® device.**

■ Connecting to another device

If you touch another device to this unit, you can update the Bluetooth® connection. The previously connected device will be disconnected automatically.

Switching the communication quality

You can change the transmission speed to prioritize sound quality or connectivity.

- The default setting is “Emphasis on sound quality”. When the sound is interrupted, select “Emphasis on connectivity”.

While pressing and holding [LP], press and hold [] for 4 seconds or more.

Emphasis on connectivity:

A beep sound is emitted once, and the Bluetooth® indicator (blue) and the LP mode indicator (green) flash once.

Emphasis on sound quality:

A beep sound is emitted twice, and the Bluetooth® indicator (blue) and the LP mode indicator (green) flash twice.

Note

- Press [LP], and within 2 seconds, press []. If [] is pressed after this time limit, the LP mode setting will be changed.

Disconnecting Bluetooth®

- Turn off this unit or the device.
- Stop / disable the Bluetooth® transmission of the device.
- (For NFC-compatible devices only)
Touch and hold your device to NFC touch area of this unit again.

Note

- This unit can only be connected to one device at a time.
- This unit can register up to 8 devices.
When the number of registered devices exceeds the maximum limit, a device that has not made a Bluetooth® connection for the longest time will be replaced. This will cancel the registration of the device. To use the device again, re-register it.
- If the unit connected to the AC adaptor is selected from a Bluetooth® device, the unit will turn on automatically even when it is turned off, establishing a Bluetooth® connection.
- If the image and sound are out of sync during playback, restart the playback app you are using. If the problem persists, connect the Bluetooth® device and this unit with an audio cable (commercially-available).
- The One-Touch Connection may not work properly depending on the type of device being used.
- Depending on the specifications and settings of a device, it can fail to connect or some operations can be different.
- Refer to the operating instructions of the Bluetooth® device for details.

Using LP mode

This mode minimizes power consumption of the battery by lowering the speaker output. (⇒ 8)

Press and hold [LP] for 2 seconds or more until the LP mode indicator (green) lights up.

The LP mode is enabled.

- Press and hold [LP] for 2 seconds or more again will return the setting back to the normal mode.


Note

- Even when the AC adaptor is connected, LP mode remains enabled.
- In LP mode, even when the volume knob is adjusted, the volume of the unit may not increase.
- Turning off the LP mode may cause the volume to jump up suddenly. Before turning off the LP mode, lower the volume.

Using the AUX input

You can listen to audio via the AUX IN jack (⇒ 6, 7) when this unit is connected to a device with an audio cable (commercially-available).

Note

- When using the AUX input, AUX input has priority than the Bluetooth® features and NFC features.
(It will be possible to receive a call hands-free by pressing [] when there is a call coming in on the device connected with Bluetooth®. ⇒ 14)
- The setting of the Bluetooth® is not changed even if the audio cable (commercially-available) is inserted into AUX IN jack.
- When using the AUX input, the volume may seem low depending on the connected device. In that case, check if the volume limit can be changed on the device. For details, refer to the manual of the device.
- If an audio cable (commercially-available) is inserted during audio playback with a Bluetooth® connection, noise may occur. In this case, stop the playback on the device connected via Bluetooth®.


Auto Power Off

This unit automatically turns off if there is no audio input and no operation is performed for approximately 10 minutes.

Note

- If the AUX IN jack is in use while the AC adaptor is connected, this function will not work.
- This function may operate even when the music is being played back if the volume of the connected device is low.
- This function may not operate depending on the connected device.
- When the DC OUT terminal is in use, this function will not work.

NA30

- The Auto Power Off function is activated, the retractable panel will remain lowered when the unit is turned off. To leave the retractable panel raised when the unit is turned off, press [] twice.


Receiving a call hands-free

If receiving a call on the mobile phone connected to this unit with Bluetooth®, you can make a hands-free call through this unit.

Preparation


Connect this unit and the mobile phone with Bluetooth®.

■ Receiving a call

Press [] when this unit rings.

- When receiving the call, the Bluetooth® indicator (blue) on the unit blinks.
- Talk into the microphone (⇒ 6, 7) on this unit.

■ Ending the call

Press [].

Note


- Adjust the volume during a call with volume knob on this unit.
- When the mobile phone and the unit are connected with Bluetooth®, even if you receive a call and have a conversation on the mobile phone, the unit may also output the incoming voice. To switch from a hands-free call using the unit to a call using only the mobile phone, operate the mobile phone.
- If a call is received during audio playback using a Bluetooth® connection, the sound will automatically switch to the ringtone.
If a call is received while the AUX IN jack is in use, the sound will switch to the ringtone of the mobile phone connected with Bluetooth®.
- If you touch other devices to the NFC touch area of this unit when receiving a call, Bluetooth® connection will not switch.
- To mute the ringtone, turn the volume knob of the unit to [- VOL] until no sound can be heard.
- Some apps for the mobile phone may not be available for hands-free.
- When the hands-free function is not available, set up a hands-free connection from the mobile phone to this unit.
- In a place with poor mobile phone reception, it may be harder to have a conversation. Use the mobile phone in a place with good reception.
- In a place where voices echo considerably, such as an area near a wall, it may be harder to have a conversation. Before using the unit, move it away from the wall or lower its volume.

To return to the factory preset state

Perform the following when you want to delete pairing device information, etc.

Preparation

Turn off the unit, and remove the AC adaptor.

Press and hold  for 10 seconds until Bluetooth® indicator (blue) and LP Mode indicator (green) blink twice.

The pairing device information will be deleted by the reset, so it will be necessary to perform pairing again. Delete the pairing information for this unit from the Bluetooth® device, then perform the pairing operation again. (⇒ 10, 11)

Troubleshooting

Before requesting service, make the following checks. If you are in doubt about some of the check points, or if the solutions indicated in the following guide do not solve the problem, refer to "Customer Services Directory (United States and Puerto Rico)" (⇒ 21) if you reside in the U.S.A. or Puerto Rico, or refer to "Limited Warranty (ONLY FOR CANADA)" (⇒ 22) if you reside in Canada.

NA30

The retractable panel is not operating correctly.

- The Auto Power Off function is activated, the retractable panel will remain lowered when the unit is turned off. To leave the retractable panel raised when the unit is turned off, press [D/I] twice.

Sound from the device is cut off.

- Simultaneous use with other 2.4 GHz devices, such as microwaves, cordless telephones, etc., may result in connection interruptions. Increase the distance between this system and these devices.
- Do not place the unit in a place where radio waves will be blocked, such as a metal cabinet.
- The device is out of the 10 m (33 ft.) communication range. Move the device nearer to this unit. (See "About Bluetooth®" ⇒ 4)
- Remove any obstacle between this unit and the device.
- Switch off any wireless LAN device.
- Select "Emphasis on connectivity" for stable communication. (See "Switching the communication quality" ⇒ 12)
- When a PC and the unit are connected with Bluetooth®, check the sound output destination setting of the PC. If the sound skips or is not output correctly in other ways, perform "To return to the factory preset state" (⇒ 14), and register the unit to the Bluetooth® device again. (⇒ 10, 11)
- Depending on the device connected to the unit, sound may be cut off or noise may be produced. When this happens, lower the volume of the device.

- When both the AUX IN jack and DC IN terminal are in use, noise may occur depending on the connected device. In this case, disconnect the AC adaptor.

The volume does not increase.

- Check the volume of the unit or the Bluetooth® device.
- In LP mode, even when the volume knob is adjusted, the volume of the unit may not increase. In this case, turn off the LP mode. (⇒ 13)

The sound is distorted.

- Depending on the device connected to this unit, when the bass or treble level is raised excessively with the device's sound quality control, the sound may become distorted. When this occurs, adjust the setting of the device.

The device cannot be connected.

- Refer to the operating instructions of the device, and perform the pairing operation again. (See "Pairing with Bluetooth® device" ⇒ 10)
- Make sure that this unit is not connected to a different device.
- The registration information of the unit may have been deleted from the Bluetooth® device. Register the unit again.
- Delete the registration information of the unit through the Bluetooth® menu, etc. on the Bluetooth® device first, and try to register the device again. (⇒ 14)

The device is connected but audio cannot be heard from this unit.

- For some built-in Bluetooth® devices, you have to set the audio output to "SC-NA30" or "SC-NA10" manually. Read the operating instructions of the device for details.
- When the AUX IN jack is in use, the jack takes priority over the Bluetooth® function or the NFC function.

This unit is not operating correctly. For example, this unit turns off all of a sudden or all indicator blink.

- Using a paper clip or similar material, press the [RESET]. (⇒ 6, 7)

The One-Touch Connection (NFC feature) is not working.

- Turn on the NFC feature of the device.

Volume is low when this unit is connected to a TV via Bluetooth®.

- Adjust the volume on the TV. The volume of headphone output may be coupled with the volume of the Bluetooth® output depending on the TV. In such case, adjust the volume of the headphone output on the TV.

Specifications

■ **Amplifier section**

RMS Output Power (AC Adaptor)	
Normal Mode	
NA30	10 % total harmonic distortion Front ch (each ch driven): 5 W per channel (1 kHz, 6 Ω) Subwoofer: 10 W per channel (100 Hz, 3 Ω) Total RMS output power: 20 W
NA10	10 % total harmonic distortion Front ch (both ch driven): 5 W per channel (1 kHz, 6 Ω) Total RMS output power: 10 W
RMS Output Power (Battery)	
Normal Mode	
NA30	10 % total harmonic distortion Front ch (each ch driven): 4 W per channel (1 kHz, 6 Ω) Subwoofer: 8 W per channel (100 Hz, 3 Ω) Total RMS output power: 16 W
NA10	10 % total harmonic distortion Front ch (both ch driven): 4 W per channel (1 kHz, 6 Ω) Total RMS output power: 8 W
RMS Output Power (AC Adaptor/Battery)	
Long Play Mode	
NA30	10 % total harmonic distortion Front ch (each ch driven): 2 W per channel (1 kHz, 6 Ω) Subwoofer: 4 W per channel (100 Hz, 3 Ω) Total RMS output power: 8 W

NA10	10 % total harmonic distortion Front ch (both ch driven): 0.5 W per channel (1 kHz, 6 Ω) Total RMS output power: 1 W
FTC Output Power (AC Adaptor)	
NA30	1.0 % total harmonic distortion Front ch (both ch driven): 250 Hz – 16 kHz 3.5 W per channel (6 Ω) Subwoofer: 70 Hz – 500 Hz 3 W (3 Ω) Total FTC power: 10 W
NA10	1.0 % total harmonic distortion Front ch (both ch driven): 250 Hz – 16 kHz 3.5 W per channel (6 Ω) Total FTC power: 7 W

■ **Speaker section**

Front Speaker (L/R)	
NA30	Type: 1 way 1 speaker system (Closed type) Unit(s): 5 cm × 2 (2" × 2) Impedance: 6 Ω
NA10	Type: 1 way 1 speaker system (passive radiator type) Unit(s): 4 cm × 2 (1 5/8" × 2) Impedance: 6 Ω
NA30 SUBWOOFER	
Type: 1 way 1 speaker system (passive radiator type) Unit(s): 8 cm × 1 (3 1/8" × 1) Impedance: 3 Ω	
Passive Radiator	
NA30	Unit: 8 cm × 2 (3 1/8" × 2)
NA10	Unit: 8 cm × 1 (3 1/8" × 1)

Bluetooth® section

Bluetooth® system specification
Ver. 3.0
Wireless equipment classification
Class 2 (2.5 mW)
Supported profiles
A2DP/AVRCP/HFP
Supported codec
aptX®, AAC, SBC
Frequency band
2.4 GHz band FH-SS
Operating distance
Approx. 10 m (33 ft.) Line of sight Prospective communication distance. Measurement environment: Height 1.0 m (3.3 ft.)

Microphone section

Type
Mono

Terminals section

DC IN
12 V 3 A
AUX input
Stereo ϕ 3.5 mm (1/8") jack
DC OUT (USB A type)
(5 V 1 A) Supply output only power-on

Accessories section

AC Adaptor
INPUT: AC 100 V to 240 V 50/60 Hz 800 mA
OUTPUT: DC 12 V 3 A

General

Power supply
NA30 DC 12 V 3 A Internal Battery: 7.2 V (Li-ion: 2900 mAh)
NA10 DC 12 V 3 A Internal Battery: 7.4 V (Li-ion: 1240 mAh)

Power consumption

NA30 Approx. 16 W
NA10 Approx. 12 W

Power consumption in standby mode

Approx. 0.4 W

Battery Life in Use (Bluetooth® : SBC mode)

NA30 Normal Mode: Approx. 14 h* LP Mode: Approx. 20 h*

NA10 Normal Mode: Approx. 11 h* LP Mode: Approx. 20 h*

Battery Charge Time (25 °C (77°F))

Approx. 3 h

Dimensions (W × H × D)

NA30: 244 mm × 144 mm × 48 mm (9 5/8" × 5 11/16" × 1 29/32")

NA10: 204 mm × 105 mm × 41 mm (With cover) (8 1/32" × 4 5/32" × 1 5/8") 200 mm × 99 mm × 29 mm (Without cover) (7 7/8" × 3 29/32" × 1 5/32")

Mass (Weight)

NA30 Approx. 930 g (2.05 lbs)

NA10 Approx. 520 g (1.15 lbs) (With cover) Approx. 415 g (0.92 lbs) (Without cover)
--

Operating temperature range

0 °C to +40 °C (+32 °F to +104 °F)

Charge temperature range

10 °C to +35 °C (+50 °F to +95 °F)

Operating humidity range

35% to 80% RH (no condensation)

Note

- Specifications are subject to change without notice.
- Mass and dimensions are approximate.
- Total harmonic distortion is measured by a digital spectrum analyzer.
- * By the measurement method prescribed in the provisions

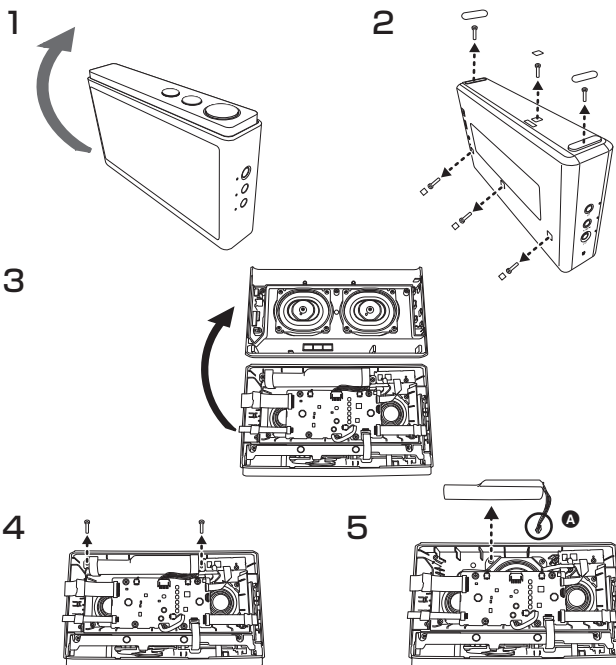
To remove the battery when disposing of this unit

The following instructions are not intended for repairing purposes but for the disposal of this unit. This unit is not restorable once disassembled.

When disposing of this unit, take out the battery installed in this unit and recycle it.

- Use up the battery before disassembling. (For Cautions of the battery → 3)
- Keep the sheets and the screws out of reach of children to prevent swallowing.

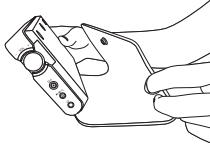
■ How to disassemble the SC-NA30



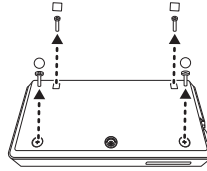
- Insulate the **A** with cellophane tape or similar.
- Do not disassemble the battery.

■ How to disassemble the SC-NA10

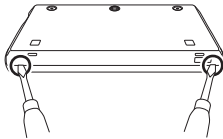
1



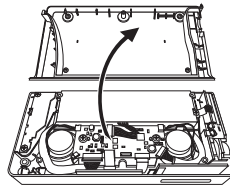
2



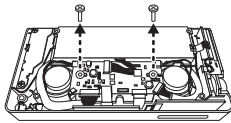
3



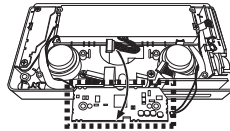
4



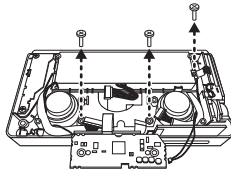
5



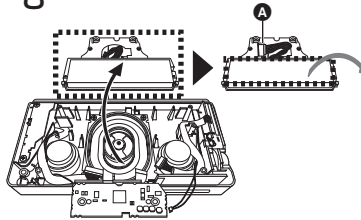
6



7



8



- Insulate the **A** with cellophane tape or similar.
- Do not disassemble the battery.

VQT5C36

Limited Warranty (ONLY FOR U.S.A. AND PUERTO RICO)

Panasonic Products Limited Warranty

Limited Warranty Coverage (For USA and Puerto Rico Only)

If your product does not work properly because of a defect in materials or workmanship, Panasonic Corporation of North America (referred to as "the warrantor") will, for the length of the period indicated on the chart below, which starts with the date of original purchase ("warranty period"), at its option either (a) repair your product with new or refurbished parts, (b) replace it with a new or a refurbished equivalent value product, or (c) refund your purchase price. The decision to repair, replace or refund will be made by the warrantor.

Product or Part Name	Parts	Labor
Wireless Speaker System	1 Year	1 Year
All included Accessories (Except Non-Rechargeable Batteries)	90 Days	Not Applicable
Only Non-Rechargeable Batteries	10 Days	Not Applicable

During the "Labor" warranty period there will be no charge for labor. During the "Parts" warranty period, there will be no charge for parts. This Limited Warranty excludes both parts and labor for non-rechargeable batteries, antennas, and cosmetic parts (cabinet). This warranty only applies to products purchased and serviced in the United States or Puerto Rico. This warranty is extended only to the original purchaser of a new product which was not sold "as is".

Mail-In Service--Online or Telephone Repair Request

Online Repair Request

To submit a new repair request and for quick repair status visit our Web Site at www.panasonic.com/repair.

Telephone Repair Request

You may contact us at: 1-800-211-PANA (7262)

When shipping the unit, carefully pack, include all supplied accessories listed in the Owner's Manual, and send it prepaid, adequately insured and packed well in a carton box. When shipping Lithium Ion batteries please visit our Web Site at www.panasonic.com/BatteryHandling as Panasonic is committed to providing the most up to date information. Include a letter detailing the complaint, a return address and provide a daytime phone number where you can be reached. A valid registered receipt is required under the Limited Warranty.

IF REPAIR IS NEEDED DURING THE WARRANTY PERIOD, THE PURCHASER WILL BE REQUIRED TO FURNISH A SALES RECEIPT/PROOF OF PURCHASE INDICATING DATE OF PURCHASE, AMOUNT PAID AND PLACE OF PURCHASE. CUSTOMER WILL BE CHARGED FOR THE REPAIR OF ANY UNIT RECEIVED WITHOUT SUCH PROOF OF PURCHASE.

Limited Warranty Limits And Exclusions

This warranty ONLY COVERS failures due to defects in materials or workmanship, and DOES NOT COVER normal wear and tear or cosmetic damage. The warranty ALSO DOES NOT COVER damages which occurred in shipment, or failures which are caused by products not supplied by the warrantor, or failures which result from accidents, misuse, abuse, neglect, mishandling, misapplication, alteration, faulty installation, set-up adjustments, misadjustment of consumer controls, improper maintenance, power line surge, lightning damage, modification, introduction of sand, humidity or liquids, commercial use such as hotel, office, restaurant, or other business or rental use of the product, or service by anyone other than a Factory Service Center or other Authorized Servicer, or damage that is attributable to acts of God.

THERE ARE NO EXPRESS WARRANTIES EXCEPT AS LISTED UNDER "LIMITED WARRANTY COVERAGE". THE WARRANTOR IS NOT LIABLE FOR INCIDENTAL OR CONSEQUENTIAL DAMAGES RESULTING FROM THE USE OF THIS PRODUCT, OR ARISING OUT OF ANY BREACH OF THIS WARRANTY.

(As examples, this excludes damages for lost time, travel to and from the servicer, loss of or damage to media or images, data or other memory or recorded content. The items listed are not exclusive, but for illustration only.)

ALL EXPRESS AND IMPLIED WARRANTIES, INCLUDING THE WARRANTY OF MERCHANTABILITY, ARE LIMITED TO THE PERIOD OF THE LIMITED WARRANTY.

Some states do not allow the exclusion or limitation of incidental or consequential damages, or limitations on how long an implied warranty lasts, so the exclusions may not apply to you.

This warranty gives you specific legal rights and you may also have other rights which vary from state to state. If a problem with this product develops during or after the warranty period, you may contact your dealer or Service Center. If the problem is not handled to your satisfaction, then write to the warrantor's Consumer Affairs Department at the addresses listed for the warrantor.

PARTS AND SERVICE, WHICH ARE NOT COVERED BY THIS LIMITED WARRANTY, ARE YOUR RESPONSIBILITY.

Customer Services Directory (United States and Puerto Rico)

Obtain Product Information and Operating Assistance; locate your nearest Dealer or Service Center; purchase Parts and Accessories; or make Customer Service and Literature requests by visiting our Web Site at:

<http://www.panasonic.com/help>

or, contact us via the web at:

<http://www.panasonic.com/contactinfo>

You may also contact us directly at:

1-800-211-PANA (7262)

Monday-Friday 9am-9pm,

Saturday-Sunday 10am-7pm EST

For hearing or speech impaired TTY users, TTY: 1-877-833-8855

Accessory Purchases (United States and Puerto Rico)

Purchase Parts, Accessories and Owner's Manual online for all Panasonic Products by visiting our Web Site at:

<http://www.pstc.panasonic.com>

Or, send your request by E-mail to:

npcparts@us.panasonic.com

You may also contact us directly at:

1-800-332-5368 (Phone) 1-800-237-9080

(Fax Only)

(Monday-Friday 9am-9pm EST)

Panasonic National Parts Center

20421 84th Ave S., Kent, WA 98032

(We accept Visa, MasterCard, Discover

Card, American Express)

For hearing or speech impaired TTY users, TTY: 1-866-605-1277

As of July 2013

The model number and serial number of this product can be found on either the back or the bottom of the unit.

Please note them in the space provided below and keep for future reference.

MODEL NUMBER SC-NA30
 MODEL NUMBER SC-NA10
 SERIAL NUMBER _____

User memo:

DATE OF PURCHASE _____
 DEALER NAME _____
 DEALER ADDRESS _____
 TELEPHONE NUMBER _____

VQT5C36

Limited Warranty (ONLY FOR CANADA)

Panasonic Canada Inc.
5770 Ambler Drive, Mississauga, Ontario L4W 2T3

PANASONIC PRODUCT - LIMITED WARRANTY EXCHANGE PROGRAM

Panasonic Canada Inc. warrants this product to be free from defects in material and workmanship under normal use and for a period as stated below from the date of original purchase agrees to, at its option either (a) repair your product with new or refurbished parts, (b) replace it with a new or a refurbished equivalent value product, or (c) refund your purchase price. The decision to repair, replace or refund will be made by Panasonic Canada Inc.

Panasonic Portable / Clock Radio (without Tape, CD, MD)	One (1) year
Panasonic Audio Product	One (1) year
Panasonic DVD Product	One (1) year
Accessories including rechargeable batteries	Ninety (90) days

This warranty is given only to the original purchaser, or the person for whom it was purchased as a gift, of a Panasonic brand product mentioned above sold by an authorized Panasonic dealer in Canada and purchased and used in Canada, which product was not sold "as is", and which product was delivered to you in new condition in the original packaging.

IN ORDER TO BE ELIGIBLE TO RECEIVE WARRANTY SERVICE HEREUNDER, A PURCHASE RECEIPT OR OTHER PROOF OF DATE OF ORIGINAL PURCHASE, SHOWING AMOUNT PAID AND PLACE OF PURCHASE IS REQUIRED

LIMITATIONS AND EXCLUSIONS

This warranty ONLY COVERS failures due to defects in materials or workmanship, and DOES NOT COVER normal wear and tear or cosmetic damage. The warranty ALSO DOES NOT COVER damages which occurred in shipment, or failures which are caused by products not supplied by Panasonic Canada Inc., or failures which result from accidents, misuse, abuse, neglect, mishandling, misapplication, alteration, faulty installation, set-up adjustments, misadjustment of consumer controls, improper maintenance, power line surge, lightning damage, modification, introduction of sand, humidity or liquids, commercial use such as hotel, office, restaurant, or other business or rental use of the product, or service by anyone other than an Authorized Servicer, or damage that is attributable to acts of God.

Dry cell batteries are also excluded from coverage under this warranty.

THIS EXPRESS, LIMITED WARRANTY IS IN LIEU OF ALL OTHER WARRANTIES, EXPRESS OR IMPLIED,

INCLUDING ANY IMPLIED WARRANTIES OF MERCHANTABILITY AND FITNESS FOR A PARTICULAR PURPOSE. IN NO EVENT WILL PANASONIC CANADA INC. BE LIABLE FOR ANY SPECIAL, INDIRECT OR CONSEQUENTIAL DAMAGES RESULTING FROM THE USE OF THIS PRODUCT OR ARISING OUT OF ANY BREACH OF ANY EXPRESS OR IMPLIED WARRANTY. (As examples, this warranty excludes damages for lost time, travel to and from the Authorized Servicer, loss of or damage to media or images, data or other memory or recorded content. This list of items is not exhaustive, but for illustration only.)

In certain instances, some jurisdictions do not allow the exclusion or limitation of incidental or consequential damages, or the exclusion of implied warranties, so the above limitations and exclusions may not be applicable. This warranty gives you specific legal rights and you may have other rights which vary depending on your province or territory.

CONTACT INFORMATION

For product information and operation assistance, please contact:

Our Customer Care Centre: Telephone #: 1-800-561-5505
Fax #: (905) 238-2360

For defective product exchange within the warranty period, please contact the original dealer or our Customer Care Centre.

Conforms to UL STD 60065
Certified to CAN/CSA STD C22.2 No.60065
Conforme à la norme CAN/CSA C22.2 No.60065

USA Only: Disposal may be regulated in your community due to environmental considerations. For disposal or recycling information, please visit Panasonic website:
<http://www.panasonic.com/environmental/>
or call 1-888-769-0149.

**Panasonic Corporation
of North America**

Two Riverfront Plaza, Newark,
NJ 07102-5490

<http://www.panasonic.com>

© Panasonic Corporation 2013
Printed in Malaysia

Panasonic Canada Inc.



5770 Ambler Drive
Mississauga, Ontario,
L4W 2T3

www.panasonic.ca

VQT5C36-1
F0813SB1103