

About Bluetooth®

Panasonic bears no responsibility for data and/or information that is compromised during a wireless transmission.

■ Frequency band used

- This system uses the 2.4 GHz frequency band.

■ Certification of this device

- This system conforms to frequency restrictions and has received certification based on frequency laws. Thus, a wireless permit is not necessary.
- The actions below are punishable by law in some countries:
 - Taking apart or modifying this system.
 - Removing specification indications.

■ Restrictions of use

- Wireless transmission and/or usage with all Bluetooth® equipped devices is not guaranteed.
- All devices must conform to standards set by Bluetooth SIG, Inc.
- Depending on the specifications and settings of a device, it can fail to connect or some operations can be different.
- This system supports Bluetooth® security features. But depending on the operating environment and/or settings, this security is possibly not sufficient. Transmit data wirelessly to this system with caution.
- This system cannot transmit data to a Bluetooth® device.

■ Range of use

- Use this device at a maximum range of 10 m (33 ft). The range can decrease depending on the environment, obstacles or interference.

■ Interference from other devices

- This system may not function properly and troubles such as noise and sound jumps may arise due to radio wave interference if this system is located too close to other Bluetooth® devices or the devices that use the 2.4 GHz band.
- This system may not function properly if radio waves from a nearby broadcasting station, etc. is too strong.

■ Intended usage


- This system is for normal, general use only.
- Do not use this system near an equipment or in an environment that is sensitive to radio frequency interference (example: airports, hospitals, laboratories, etc).

Media playback operations

The following marks indicate the availability of the feature.

- CD** : CD audio in CD-DA format (→ 5)
- iPod** : Compatible iPod/iPhone/iPad (→ 5)
- AirPlay** : When connected to an AirPlay compatible device. (→ 14)
- Bluetooth** : Connected Bluetooth® device (→ 16)

Preparation


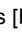


- Turn this system on.
- Insert the media (→ 9) or connect the Bluetooth® (→ 16) / AirPlay (→ 14) compatible device.
- Press [CD/RADIO], [iPod] or [, AUX] to select the audio source.



- When using iPod/iPhone/iPad, the operation may vary among those models.

Basic play

(**CD**, **iPod**, **AirPlay**, **Bluetooth**)

Play	Press [ /].
Stop	Press [■].
Pause	Press [ /]. Press again to restart play.
Skip	Press [ /◀◀] or [▶▶/▶▶]. to skip track.
Search (Except AirPlay)	During play or pause Press and hold [ /◀◀] or [▶▶/▶▶]. <ul style="list-style-type: none">• Point the remote control at the CD unit to operate.• iPod : Backwards search is only within the current track.

CD To display information

Press [DISPLAY, iPod MENU] repeatedly.



- To use this system's remote control with a Bluetooth® device, the Bluetooth® device must support AVRCP (Audio Video Remote Control Profile). Depending on the device or the status of the device, some operations may not work.
- Maximum number of displayable characters: approx. 30
- This system supports ver. 1.0, 1.1 and 2.3 ID3 tags. Text data that is not supported will not be displayed or shown differently.

■ **iPod** To navigate through the iPod/iPhone menu

- Open the Music App to use this feature with iPod touch/iPhone.
- [**▲**, **▼**] : To navigate menu items.
- [**OK**] : To go to the next menu.
- [**DISPLAY**, **iPod MENU**] : To return to the previous menu.



- Depending on the model (e.g., iPod nano 7th generation, etc.), it may be necessary to select the album, artist, etc. on the iPod/iPhone/iPad.

Playback modes (CD, AirPlay*1)

Select the playback mode.

- 1 Press [**PLAY MENU**] to select "REPEAT" or "RANDOM" / "SHUFFLE".
- 2 Press [**▲**, **▼**] to select the setting and then press [**OK**].

REPEAT

CD	
OFF	Select to cancel repeat playback.
1-TRACK	Only plays the selected track. <ul style="list-style-type: none"> • "1, ♪, ↻" is displayed. (Skip to the desired track.)
ALL	All tracks are repeated. <ul style="list-style-type: none"> • "↻" is displayed.

AirPlay

Refer to the connected device to verify the selected setting.

CD RANDOM

ON	Plays the contents randomly. <ul style="list-style-type: none"> • "RND" is displayed. • "RND" will not be displayed when "1-TRACK" is selected.
OFF	Random playback is turned off.

AirPlay SHUFFLE

Refer to the connected device to verify the selected setting.



- When using an iPod/iPhone/iPad or Bluetooth® device, use the setting on the device, if available.
- During random play, you cannot skip to the previous track.
- **CD** : The mode is canceled when you open the door for discs.

AirPlay : The applied settings will remain until it is changed.

*1: **AirPlay** : Perform the settings during playback.

Listening to the radio

You can preset up to 30 channels.

Preparation

- Make sure that the FM antenna is connected. (→ 8)
- Turn this system on.
- Press [CD/RADIO] to select "FM".



- A station previously stored is overwritten when another station is stored in the same channel preset.

Presetting stations automatically

1 Press [PLAY MENU] to select "A.PRESET".

2 Press [▲, ▼] to select "LOWEST" or "CURRENT" and then press [OK].

LOWEST:

To begin auto preset with the lowest frequency (FM 87.9 or FM 87.5).

CURRENT:

To begin auto preset with the current frequency.*

* To change the frequency, refer to "Manual tuning and presetting".

The tuner starts to preset all the stations it can receive into the channels in ascending order.

Listening to a preset channel

Preparation

- ① Press [PLAY MENU] repeatedly to select "TUNEMODE".
- ② Press [▲, ▼] to select "PRESET" and then press [OK].

Press [◀◀/▶▶] or [▶▶/▶▶] to select the channel.

Manual tuning and presetting

Select a radio broadcast.

- 1 Press [PLAY MENU] repeatedly to select "TUNEMODE".
- 2 Press [▲, ▼] to select "MANUAL" and then press [OK].
- 3 Press [◀◀/▶▶] or [▶▶/▶▶] to tune to the required station.
 - To start automatic tuning, press and hold [◀◀/▶▶], [▶▶/▶▶] until the frequency starts scrolling. Tuning stops when a station is found.

To preset the channel

- 4 While listening to the radio broadcast Press [OK].
- 5 Press [▲, ▼] to select the channel and then press [OK].

To improve FM sound quality

- 1 While receiving FM broadcasts, press [PLAY MENU] repeatedly to select "FM MODE".
 - 2 Press [▲, ▼] to select "MONO" and then press [OK].
- This setting can be preset and memorized. To do so, continue to step 4 of "Manual tuning and presetting".



- Select "STEREO" in step 2 to return to stereo broadcasts.
- "MONO" is canceled if the frequency is changed.
- If "MONO" is selected, regardless of the type of signal this system is receiving, "FM MONO" is displayed when [DISPLAY, iPod MENU] is pressed. (→ below)

To display the current signal status

Press [DISPLAY, iPod MENU].

"FM ST": The FM signal is in stereo.

"FM": The FM signal is in monaural.

- "FM" is also displayed even if this system is not tuned to a station.



- "STEREO" is displayed when this system tunes to a stereo broadcast.

Sound adjustment

The following sound effects can be added to the audio output.

- 1 Press [SOUND] repeatedly to select the effect.
- 2 Press [▲, ▼] to select the setting and then press [OK].

Direct-Vocal Surround (D.SURROUND)	“LEVEL 1”, “LEVEL 2” or “OFF”. <ul style="list-style-type: none">• The factory preset is “OFF”.
Preset EQ (PRESET EQ)	“HEAVY” (heavy), “SOFT” (soft), “CLEAR” (clear), “VOCAL” (vocal) or “FLAT” (flat/off). <ul style="list-style-type: none">• The factory preset is “HEAVY”.
Bass (BASS) or Treble (TREBLE)	Adjust the level (–4 to +4).
Dynamic Bass (D.BASS)	“ON D.BASS” or “OFF D.BASS”. <ul style="list-style-type: none">• The factory preset is “ON D.BASS”.

- You may experience a reduction in sound quality when these effects are used with some sources. If this occurs, turn the sound effects off.

Clock and Timer

To make this setting, point the remote control at the speaker unit.

Setting the clock

This is a 12-hour clock.

- 1 Press [SETUP] to select “CLOCK”.
- 2 Press [▲, ▼] to set the time and then press [OK].



- To display the clock, press [SETUP] to select “CLOCK” and then press [OK] once. The time is displayed for 10 seconds. (During standby, press [DISPLAY, iPod MENU] once.)
- The clock is reset when there is a power failure or when the AC power supply cord is removed.
- Reset the clock regularly to maintain accuracy.

Play timer

You can set the timer so this system turns on at a certain time every day.

Preparation

Set the clock (→ left).

Setting the timer

- 1 Press [SETUP] repeatedly to select “TIMER ADJ”.
- 2 Press [▲, ▼] to set the starting time (“ON TIME”) and then press [OK].
- 3 Press [▲, ▼] to set the finishing time (“OFF TIME”) and then press [OK].

Turn the timer on

- 1 Select the music source*1 and set the desired volume.
- 2 Press [SETUP] repeatedly to select “TIMER SET”.
- 3 Press [▲, ▼] to select “SET” and then press [OK].
 - “⊕” is displayed.
 - To turn the timer off, select “OFF”.
- 4 Press [⏻] to turn this system off.



- To display the timer settings, press [SETUP] repeatedly to select “TIMER ADJ” and then press [OK] once. The music source and volume will also be displayed if the timer is turned on.
- During standby, if the timer is turned on, press [DISPLAY, iPod MENU] twice to display the settings.
- This system can be used as normal after the timer is set, however:
 - Turn this system to standby mode before the timer start time.
 - Even if the audio source or the volume is changed, the timer will still use the audio source and volume that was set when the timer was turned on.
- If this system is having a wireless communication problem at the set time, an electronic sound may go off instead of the set music source.

*1: “CD”, “FM”, “AUX”, “IPOD_DOCK” and “IPOD_PORT” can be set as the music source.

Sleep timer

The sleep timer can turn this system off after a set time.

- 1 Press [SLEEP] repeatedly to set the time (in minutes) and then press [OK].

“SLEEP 30” → “SLEEP 60” → “SLEEP 90” → “SLEEP 120”
↑ “OFF” (Cancel) ↓

- The remaining time is indicated on this system’s display except when other operations are performed.
- The play timer and sleep timer can be used together. The sleep timer always has priority.

Others

Automatic standby

As a factory preset, this system will always turn off automatically if there is no sound output and no operation for approx. 30 minutes.

To cancel this function

- 1 Press [SETUP] repeatedly to select "AUTO OFF".
- 2 Press [▲, ▼] to select "OFF" and then press [OK].



- To turn automatic standby on, select "ON" in step 2.
- This setting cannot be selected when "FM" is the source.
- When connected to a Bluetooth® device, the automatic standby function does not work.

Changing the remote control code

When other Panasonic equipment responds to the supplied remote control, change the remote control code.

- 1 Press [⊗, AUX] to select "AUX".
- 2 While pressing and holding [SELECTOR] on the speaker unit, press and hold [CD/RADIO] on the remote control until this system's displays show "REMOTE 2".
- 3 Press and hold [OK] and [CD/RADIO] on the remote control for at least 4 seconds.



To change the mode back to "REMOTE 1", repeat the steps above but replace the button pressed on the remote control from [CD/RADIO] to [⊗, AUX].

Software update

Occasionally, Panasonic may release updated software for this system that may add or improve the way a feature operates. These updates are available free of charge.

The CD unit and the speaker unit need to be updated separately.

DO NOT DISCONNECT the AC power supply cord while one of the following messages is displayed.

- "LINKING", "UPDATING" or "□□□%"
(* □ " stands for a number.)
- During the update process, no other operations can be performed.

Preparation

- Turn this system on.
- Connect this system to the wireless network. (→ 10)
 - Make sure that the wireless network is connected to the Internet.
 - If "D.CONNECT" is set to "ON", change the setting to "OFF" and connect this system to a wireless network that is connected to the Internet.

Updating the CD unit

- 1 Download the latest firmware from the following website and burn it to a CD-R to update the firmware.
<http://panasonic.jp/support/global/cs/>
(This site is in English only.)
- 2 Insert the CD-R to the CD unit.
- 3 Press [CD/RADIO] repeatedly to select "CD".
- 4 Press [▲, ▼] to select "UPDATE? Y" and then press [OK] to start the update.
 - Select "UPDATE? N" to cancel the update.
 - ↳ After the update has finished, "SUCCESS" is displayed.
- 5 Disconnect the AC power supply cord and reconnect it after 3 minutes.

Updating the speaker unit

- 1 Press [SETUP] repeatedly to select "SW UPDATE" and then press [OK].
- 2 Press [▲, ▼] to select "UPDATE? Y" and then press [OK] to start the update.
 - Select "UPDATE? N" to cancel the update.
 - ↳ After the update has finished, "SUCCESS" is displayed.
- 3 Disconnect the AC power supply cord and reconnect it after 3 minutes.



- If there are no updates, "NO NEED" is displayed.
- **Downloading will require several minutes. It may take longer or may not work properly depending on the connection environment.**

Checking the software version

- 1 Press [SETUP] repeatedly to select "SW VER." and then press [OK].
 - ↳ The version of the installed software is displayed.
- 2 Press [OK] to exit.

Changing the communication mode

To change the wireless communication quality between the CD unit and the speaker unit. If the units are not wirelessly connected, or output sound is interrupted, select "C.MODE1" in step 2.

- 1 Press [SETUP] repeatedly to select "COM.MODE" and then press [OK].
- 2 Press [▲, ▼] to select "C.MODE1" or "C.MODE2" and then press [OK].

C.MODE1 : Priority is given to connectivity (229 bps)

C.MODE2 : Priority is given to sound quality (384 bps, default setting)

Wi-Fi® signal strength

To check the Wi-Fi signal strength where this system is located.

Preparation

Connect this system to the wireless network. (→ 10)

- 1 Press [SETUP] repeatedly to select "SIG.LEVEL" and then press [OK].
 - This system's displays show "LEVEL □". ("□" stands for a number.)
- 2 Press [OK] to exit this display mode.



- It is recommended to have a signal strength of "3". Change the position or angle of your wireless network router or this system if the indication is "2" or "1" and see if the connection improves.
- If "LEVEL 0" is displayed, this system cannot establish a link with the wireless network router. (→ 25)
- This function does not work when "D.CONNECT" is set to "ON".

Network standby

This system can turn on automatically from standby mode when this system is selected as the AirPlay speakers.

Preparation

Connect this system to the wireless network. (→ 10)

- 1 Press [SETUP] repeatedly to select "NET STNBY" and then press [OK].
- 2 Press [▲, ▼] to select "ON" and then press [OK].



- To cancel this function, select "OFF" in step 2.
- The factory preset is "OFF". If this function is set to "ON" the standby power consumption will increase.

Wireless network name (SSID)

Display the name for the connected wireless network (SSID).

- 1 Press and hold [– WPS] on the speaker unit and [OK] on the remote control until this system's displays show the SSID.
- 2 Press [OK] to exit.



- If "NOCONNECT" is displayed this system is not connected to a wireless network.
- All letters are displayed as capital letters, and characters that cannot be displayed are replaced with "*".

IP/MAC Address

To check this system's IP address or the Wi-Fi MAC address.

- 1 Press and hold [– WPS] on the speaker unit and [▼] on the remote control until this system's displays show the IP address.
 - ↳ The IP address is partially displayed.
 - To display the MAC address on this system, repeat the steps above by replacing [▼] with [▲].
- 2 Press [▲, ▼] on the remote control to show the rest of the IP address.



- To exit the setting, wait 20 sec.
- The "–" displayed on the top or bottom left of the display indicate the first and last units respectively.

Troubleshooting

Before requesting service, make the following checks. If you are in doubt about some of the check points, or if the solutions indicated in the following guide do not solve the problem, refer to "Customer Services Directory (United States and Puerto Rico)" on page 30 if you reside in the U.S.A. or Puerto Rico, or refer to "Limited Warranty (ONLY FOR CANADA)" on page 31 if you reside in Canada.

To return all settings to the factory preset

When the following situations occur, reset the memory of both the CD unit and the speaker unit:

- There is no response when buttons are pressed.
- You want to clear and reset the memory contents.

- ① Disconnect the AC power supply cord. (Wait for at least 3 minutes before proceeding to step ②.)
- ② While pressing and holding down [⏻/⏪] on the unit, reconnect the AC power supply cord.
 - Keep holding down [⏻/⏪] until "-----" appears on the display.
- ③ Release [⏻/⏪].



- All the settings are returned to the factory preset. You will need to reset the memory items.

Do you have the latest software installed?

- Occasionally, Panasonic may release updated software for this system that may add or improve the way a feature operates. (→ 21)

Common problems

The CD unit and the speaker unit are not wirelessly connected.

The sound is interrupted.

The standby/on indicator on the side of the CD unit lights red.

The display shows "NOCONNECT" or "CANNOT ACCEPT".

This system has a wireless communication problem, follow the instructions below.

- ① Check that the AC power supply cords are connected to the both units.
 - ② If the devices which use 2.4 GHz are being used near this system, turn them off temporarily.
 - ③ Move the both units closer together. A wireless connection will be automatically established.
- If a wireless connection is not established, set the communication mode to "C.MODE1". (→ 22)
 - If the problem persists, connect the units with cables. (→ 8)

Only the speaker unit's display turns on

- Press any button on the CD unit, or select "CD", "IPOD_DOCK", or "IPOD_PORT" as an audio source.

Humming heard during play.

- An AC power supply cord or fluorescent light is near the cords. Keep other appliances and cords away from this system's cables.

Bluetooth®

Pairing cannot be done.

- Check the Bluetooth® device condition.

The device cannot be connected.

- The pairing of the device was unsuccessful or the registration has been replaced. Try pairing the device again. (→ 16)
- This system might be connected to a different device. Disconnect the other device and try pairing the device again.

The device is connected but audio cannot be heard through the speaker unit.

- For some built-in Bluetooth® devices, you have to set the audio output to "SC-NE5" manually. Read the operating instructions for the device for details.

The sound is interrupted.

- The device is out of the 10 m (33 ft) communication range. Bring the Bluetooth® device closer to this system.
- Remove any obstacle between this system and the device.
- Other devices that use the 2.4 GHz frequency band (wireless router, microwaves, cordless phones, etc.) are interfering. Bring the Bluetooth® device closer to the speaker unit and distance it from the other devices.
- Select "MODE 1" for stable communication. (→ 16)

Disc operations

Incorrect display or play will not start.

- Make sure that the disc is compatible with this system. (→ 5)
- There is moisture on the lens. Wait for about an hour and then try again.

Radio

A beat sound or noise is heard while receiving radio broadcast.

- Confirm the FM antenna is properly connected. (→ 8)
- Adjust the position of the antenna.
- Try to keep a certain amount of distance between the antenna and AC power supply cord.
- Try using an outdoor antenna if there are buildings or mountains nearby.
- Switch the television or other audio player off or separate it from this system.
- Keep this system away from mobile phones if the interference is apparent.

Stations cannot be selected.

Change the FM frequency step.

- ① Press [CD/RADIO] to select "FM".
- ② Press and hold [SELECTOR] on the speaker unit.

After a few seconds the display changes to show the current lowest frequency. Continue to hold the button down. The lowest frequency changes and the step is changed.

iPod/iPhone/iPad operations

Cannot charge or operate.

- Have you selected the appropriate selector? Press [iPod] to select either "IPOD_DOCK" or "IPOD_PORT".
- Check that the iPod/iPhone/iPad is connected properly. (→ 9)
- The battery of the iPod/iPhone/iPad is depleted. Charge the iPod/iPhone/iPad, and then operate again.
- Connect the iPod/iPhone/iPad again or try to restart the iPod/iPhone/iPad.
- When this system is in standby mode, charging will not start when using the "IPOD_PORT" connection. Turn this system on and make sure the charging has started before switching this system to standby mode.

AirPlay operations

Cannot connect to the network.

- Confirm the network connection and settings. (→ 10)
- Your wireless network might be set to be invisible. In this case select "Manual settings" in "Method 4". (→ 13)
- This system cannot join a wireless network using WEP security settings with the WPS methods ("Method 1"). Use "Method 4" to join the wireless network. (→ 12)
- Make sure that the multicast function on the wireless network router is set to on (enabled).
- When "D.CONNECT" is used, if the password for "D.CONNECT" has been changed connect the other device to this system using the new password. (→ 14)

Cannot connect to this system.



- Display the wireless network name that this system is connected to and make sure that the device is connected to the same network. (→ 10, 22)
- If "NET STNBY" is set to "OFF", the AirPlay compatible device cannot be connected when this system is off.
- Turn off the Wi-Fi setting on the AirPlay compatible device, set "NET STNBY" to "OFF" (→ 22) and then turn this system off and on. Reconnect the compatible device to the Wi-Fi network and then select this system as the AirPlay speakers again.

My wireless network router is WPS PBC compatible, but the pairing does not work.

- If the network is set to be invisible, the push button configuration does not work. In this case, either make the wireless network visible while you set up the network for this system or use "Method 2", "Method 3" or "Method 4". (→ 11, 12)

Playback does not start.

The sound is interrupted.

- Simultaneous use with other 2.4 GHz devices, such as microwaves, cordless telephones, etc., may result in connection interruptions.
Increase the distance between this system and these devices.
- Do not place this system inside a metal cabinet, for it might block the Wi-Fi signal.
- Place this system closer to the wireless network router.
- If "D.CONNECT" is set to "ON", place the AirPlay compatible device closer to the speaker unit.
- If several wireless devices are simultaneously using the same wireless network as this system, try turning off the other devices or reducing their wireless network usage.
- If the playback stops, check the playback status on the iOS device or iTunes.
- If playback does not start (even though the Wi-Fi status indicator lights in blue and the AirPlay  icon is displayed), restart the wireless network router, turn the Wi-Fi connection on the iOS device or Mac/PC off and on, and then make sure that your home wireless network is selected.
- If the AirPlay  icon is not displayed even if Wi-Fi status indicator lights in blue, try restarting the wireless network router.
- With some iOS and iTunes versions, it may not be possible to restart the AirPlay playback if the selector is changed (e.g., "CD") or this system is turned off, during the AirPlay playback. In this case, select a different device from the AirPlay icon of the Music App or iTunes and then re-select this system as the output speakers. (→ 14)

Remote control

The remote control doesn't work properly.

- The remote control and this system are using a different code. (→ 25, "REMOTE □")
- Is the battery depleted or is the battery inserted incorrectly? (→ 7)

Messages

The following messages or service numbers may appear on this system's displays.

"--:--"

- You plugged the AC power supply cord in for the first time or there was a power failure recently. Set the time (→ 20).

"ADJUST CLOCK"

- Clock is not set. Adjust the clock accordingly.

"ADJUST TIMER"

- Play timer is not set. Adjust the play timer accordingly.

"AUTO OFF"

- This system has been left unused for about 30 minutes and will shut down within a minute. Press any button to cancel it.

"CANNOT ACCEPT"

- The remote control cannot be operated due to a wireless communication problem between the CD unit and the speaker unit. (→ 23)

"CANNOT SET"

- Select an audio source other than "AIRPLAY" or "BLUETOOTH".

“CHECKING CONNECTION”

- This system is checking the connected iPod/iPhone/iPad.
- If this display keeps appearing, make sure that the battery of the iPod/iPhone/iPad is not depleted and that the iPod/iPhone/iPad is turned on and connected correctly (→ 9).

“DIMMER”

- Appears 10 seconds after the volume is turned to “0”.

“DL ERROR”

- The software download has failed. Press any button to exit. Please try again later.
- The server cannot be found. Press any button to exit. Make sure that the wireless network is connected to the Internet.

“ERROR”

- Incorrect operation is performed. Read the instructions and try again.

“F □□” (“□□” stands for a number.)

- There is a problem with this system.
Note down the displayed number, disconnect the AC power supply cord and consult your dealer.

“FAIL”

- Updating or setting has failed. Read the instructions and try again.

“IPOD_DOCK OVER CURRENT ERROR”**“IPOD_PORT OVER CURRENT ERROR”**

- The iPod/iPhone/iPad is drawing too much power. Remove the iPod/iPhone/iPad and turn this system off and on again.

“LEVEL 0”

- There is no link between this system and the wireless network router.
Try the following operations:
 - Check that the wireless network router is turned on.
 - Turn this system off and on again.
 - Reset the wireless network settings. (→ 10)
 If the problem persists, consult your dealer.

“LEVEL –”

- When “D.CONNECT” is set to “ON” the Wi-Fi signal strength cannot be checked. To check the Wi-Fi signal strength from the wireless network router, set “D.CONNECT” to “OFF”. (→ 14)

“LINKING”

- This system is communicating with the wireless network router to complete the network settings.
Depending on the wireless network router this process may take a few minutes. Try moving this system closer to the wireless network router.

“NOCONNECT”

- This system cannot connect to the network.
Check the network connection. (→ 10)
- This system has a wireless communication problem between the CD unit and the speaker unit. (→ 23)

“NODEVICE”

- The iPod/iPhone/iPad device is not inserted correctly. Read the instructions and try again (→ 9).
- The battery of the iPod/iPhone/iPad is depleted. Charge the iPod/iPhone/iPad and turn it on before connecting.

“NO DISC”

- Insert the disc to be played (→ 9).

“NO PLAY”

- A CD that is not in CD-DA format is inserted. It cannot be played.

“NOT SUPPORTED”

- You have connected an iPod/iPhone/iPad that cannot be played (→ 5).
- If the iPod/iPhone/iPad is compatible, turn it on and connect it correctly.
- The connected iPod touch/iPhone/iPad is not connected to a wireless network. Connect it to a wireless network and try again. (→ 10)

“READING”

- This system is checking the CD information. After this display has disappeared, start operating.

“REMOTE □” (“□” stands for a number.)

- The remote control and this system are using different codes. Change the code on the remote control.
 - When “REMOTE 1” is displayed, press and hold [OK] and [Ⓜ, AUX] for more than 4 seconds.
 - When “REMOTE 2” is displayed, press and hold [OK] and [CD/RADIO] for more than 4 seconds.

“SET WI-FI”

- The connected iPod touch/iPhone/iPad is not connected to a wireless network. Connect it to a wireless network and try again. (→ 10)

Attaching the speaker unit to a wall (optional)

The speaker unit can be wall mounted using the supplied wall mount brackets, etc. Make sure that the screw used and the wall are strong enough to support the weight of at least 33 kg (72.8 lbs). The screws and other items are not supplied as the type and size will vary with each installation.

- Refer to step 2 of "Wall mount instructions" for details about the required screws.
- Be sure to attach the fall prevention cord as a secondary safety measure.

Installation accessories

Supplied accessories

- 1 Safety holder
- 1 Screw
- 2 Wall mount brackets

Additionally required accessories (commercially available)

- 4 Wall mount bracket fixing screws
- 1 Safety holder fixing screw
- 1 Fall prevention cord*
- 1 Screw eye

* Use a cord that is capable of supporting over 33 kg (72.8 lbs) (with a diameter of about 1.5 mm ($1/16''$)).

- Keep the safety holder out of reach of children to prevent swallowing.
- Keep the screws out of reach of children to prevent swallowing.
- Keep the wall mount brackets out of reach of children to prevent swallowing.

Safety precautions

Professional installation is required.
The installation should never be done by any other than a qualified installation specialist.
PANASONIC DISCLAIMS ANY PROPERTY DAMAGE AND/OR SERIOUS INJURY, INCLUDING DEATH RESULTING FROM IMPROPER INSTALLATION OR INCORRECT HANDLING.

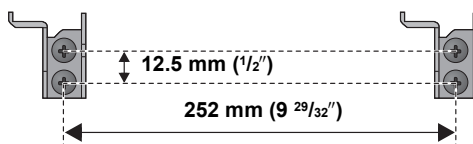
- Be sure to install this unit as indicated within this Owner's Manual.

Wall mount instructions

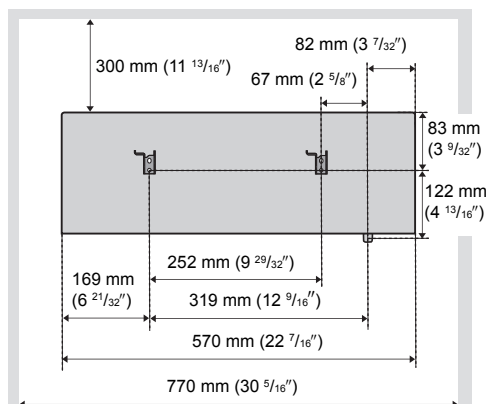
Before installation, turn the unit off and disconnect the AC power supply cord from the AC outlet.

- 1 Measure and mark the position of the wall mount brackets (Both sides).
↳ Use figures below to identify the screwing positions.

The position to attach the wall mount brackets

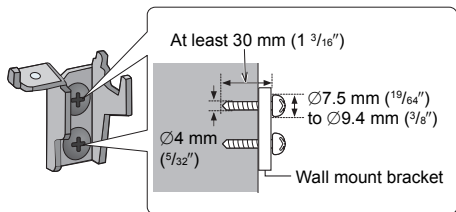


Space required



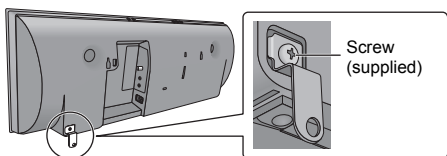
2 Attach the wall mount bracket to the wall with 2 screws (not supplied). (Both sides)

- Use a level to ensure both wall mount brackets are level.

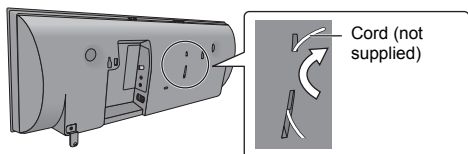


3 Fix the safety holder onto the unit with the screw (supplied).

- ↳ Screw tightening torque: 50 N•cm (0.4 lbf•ft) to 70 N•cm (0.5 lbf•ft).

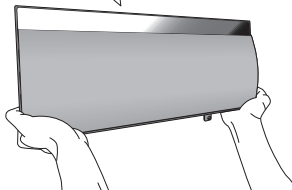
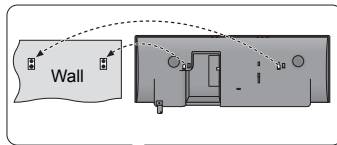


4 Attach the fall prevention cord (not supplied) to this unit.



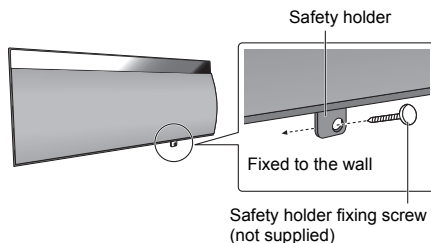
5 Hook the unit securely onto the wall mount brackets with both hands.

- Connect the FM antenna and the AC power supply cord to the unit before hanging the unit onto the wall. (→ 8)
- After hanging the unit, release your hands carefully to confirm the unit sits securely on the wall.



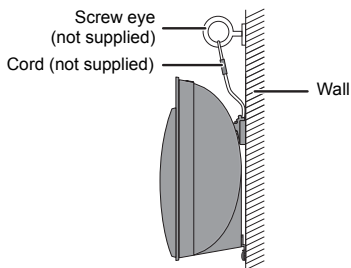
6 Drive the safety holder fixing screw (not supplied) to secure the safety holder onto the wall.

- Refer to step 2 for requirements before screwing.



7 Attach the fall prevention cord (not supplied) to the wall.

- Make sure that the slack of the cord is minimal.



Specifications

■ GENERAL

Power consumption	
CD unit	23 W
Speaker unit	14 W
Power consumption in standby mode*1	
CD unit	Approx. 0.2 W
Speaker unit	Approx. 0.2 W
Power consumption in standby mode*1 (When "NET STNBY" is "ON")	
Speaker unit	Approx. 4.0 W
Power supply	AC 120 V, 60 Hz

Dimensions (W×H×D)

CD unit	192 mm×206 mm×93 mm (7 9/16"×8 1/8"×3 11/16")
---------	--

Speaker unit	570 mm×206 mm×100 mm (22 7/16"×8 1/8"×3 15/16")
--------------	--

Mass

CD unit	Approx. 0.9 kg (2 lbs)
Speaker unit	Approx. 2.8 kg (6.17 lbs)

Operating temperature range

0 °C to +40 °C (+32 °F to +104 °F)

Operating humidity range

35 % to 80 % RH (no condensation)

■ AMPLIFIER SECTION

RMS Output Power Stereo mode

Front Ch (both ch driven)	20 W per channel (6 Ω), 1 kHz, 10 % THD
---------------------------	--

Total RMS Stereo mode power	40 W
------------------------------------	------

FTC Output Power Stereo mode

Front Ch (both ch driven)	15 W per channel (6 Ω), 20 Hz to 20 kHz, 1 % THD
---------------------------	---

Total FTC Stereo mode power	30 W
------------------------------------	------

■ TUNER SECTION

Frequency Modulation (FM)

Preset Memory FM 30 stations

Frequency range

87.9 MHz to 107.9 MHz (200 kHz step)

87.5 MHz to 108.0 MHz (100 kHz step)

Antenna terminals 75 Ω (unbalanced)

■ TERMINALS SECTION

iPod Port

USB Standard USB 2.0 full speed

USB device file system

FAT12, FAT16, FAT32

iPod port power DC OUT 5 V 2.1 A MAX

Lightning Connector DC OUT 5 V 1.0 A MAX

AUX Terminal Stereo, Ø3.5 mm (1/8") jack

■ DISC SECTION

Disc played (8 cm (3") or 12 cm (5"))

CD, CD-R/RW (CD-DA)

Pick up

Wavelength 790 nm (CD)

Laser power CLASS 1

Audio output (Disc)

Number of channels 2 ch (FL, FR)

■ SPEAKER SECTION

Type

2 way, 2 speaker system (Bass reflex)

Speaker unit(s)

1. Woofer 8 cm (3 1/8")×1 per channel

2. Tweeter 2.5 cm (1")×1 per channel

Impedance 6 Ω

Output sound pressure

83.5 dB/W (1 m (3.3 ft))

Frequency range 52 Hz to 25 kHz (−16 dB),

75 Hz to 22 kHz (−10 dB)

■ Wi-Fi/AirPlay SECTION

Wi-Fi

WLAN Standards IEEE802.11b/g

Frequency range 2.4 GHz band

Security WEP (64 bit/128 bit),
WPA™, WPA2™

WPS version Version 2.0 (WEP not support)

■ BLUETOOTH SECTION

Version Bluetooth® Ver.2.1 +EDR

Output Class 2 (2.5 mW)

Communication distance About 10 m (33 ft)*2

Communication method 2.4 GHz band FH-SS

Correspondence profile A2DP/ AVRCP



*1: When the iPod/iPhone is not charging.

*2: Prospective communication distance

Measurement environment:

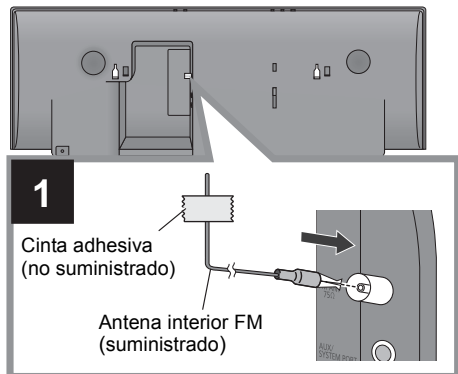
Temperature 25 °C (77 °F) / Height 1 m (3.3 ft)

Measure in "MODE 1"

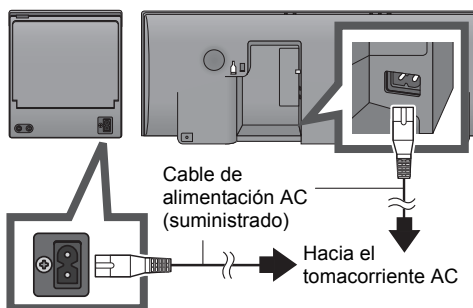
• Specifications are subject to change without notice.
Mass and dimensions are approximate.

• Total harmonic distortion is measured by a digital spectrum analyzer.

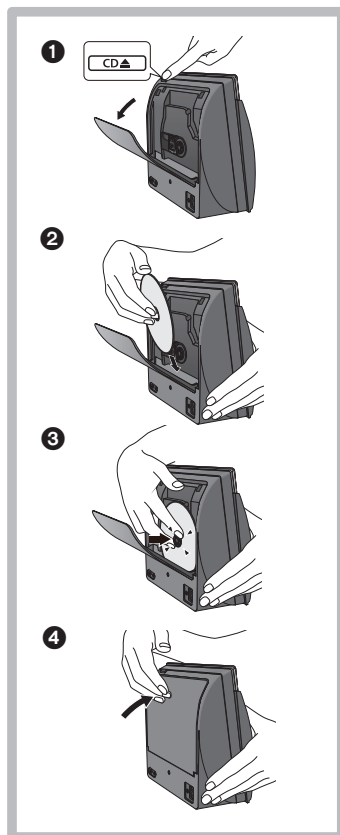
Conexiones



2 Conecte el cable de alimentación AC después de que todas las demás conexiones estén completas.



• Consumo de energía en Standby (modo de espera). (→ 28)



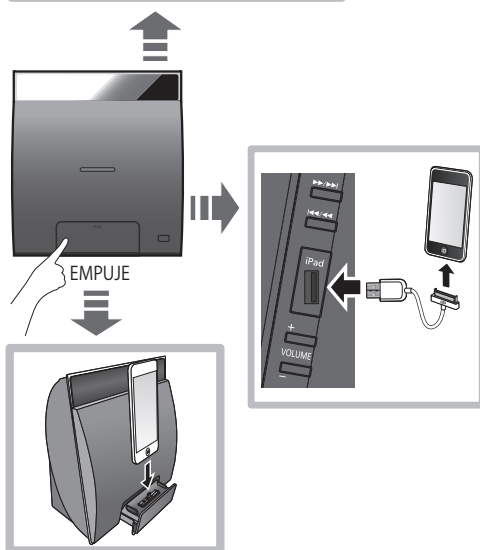
Operaciones de reproducción de medios

Preparación

- Encienda la unidad.
- Inserte el medio. (→ arriba)
- Presione [CD/RADIO] o [iPod] para seleccionar la fuente de audio.

Reproducción básica

Reproducir	Presione [▶/].
Detención	Presione [■].
Pausa	Presione [▶/]. Presione nuevamente para reiniciar la reproducción.
Saltear	Presione [◀◀/▶▶] o [▶▶/▶▶] para saltar una pista.
Búsqueda	Durante la reproducción o pausa Mantenga presionado [◀◀/▶▶] o [▶▶/▶▶].



Limited Warranty (ONLY FOR U.S.A. AND PUERTO RICO)

Panasonic Consumer Marketing Company of North America,
Division of Panasonic Corporation of North America
One Panasonic Way, Secaucus, New Jersey 07094

Panasonic Products Limited Warranty

Limited Warranty Coverage (For USA and Puerto Rico Only)

If your product does not work properly because of a defect in materials or workmanship, Panasonic Consumer Marketing Company of North America (referred to as "the warrantor") will, for the length of the period indicated on the chart below, which starts with the date of original purchase ("warranty period"), at its option either (a) repair your product with new or refurbished parts, (b) replace it with a new or a refurbished equivalent value product, or (c) refund your purchase price. The decision to repair, replace or refund will be made by the warrantor.

Product or Part Name	Parts	Labor
Wireless Speaker System	1 Year	1 Year
All included Accessories (Except Non-Rechargeable Batteries)	90 Days	Not Applicable
Only Non-Rechargeable Batteries	10 Days	Not Applicable

During the "Labor" warranty period there will be no charge for labor. During the "Parts" warranty period, there will be no charge for parts. This Limited Warranty excludes both parts and labor for non-rechargeable batteries, antennas, and cosmetic parts (cabinet). This warranty only applies to products purchased and serviced in the United States or Puerto Rico. This warranty is extended only to the original purchaser of a new product which was not sold "as is".

Mail-In Service

For assistance in the U.S.A. and Puerto Rico in obtaining repairs, please ship the product prepaid to:

Panasonic Exchange Center
4900 George McVay Drive
Suite B
McAllen, TX 78503
panacare@us.panasonic.com

Online Repair Request

To submit a new repair request and for quick repair status visit our Web Site at www.panasonic.com/repair.

When shipping the unit, carefully pack, include all supplied accessories listed in the Owner's Manual, and send it prepaid, adequately insured and packed well in a carton box. When shipping Lithium Ion batteries please visit our Web Site at www.panasonic.com/BatteryHandling as Panasonic is committed to providing the most up to date information. Include a letter detailing the complaint, a return address and provide a daytime phone number where you can be reached. A valid registered receipt is required under the Limited Warranty.

IF REPAIR IS NEEDED DURING THE WARRANTY PERIOD, THE PURCHASER WILL BE REQUIRED TO FURNISH A SALES RECEIPT/ PROOF OF PURCHASE INDICATING DATE OF PURCHASE, AMOUNT PAID AND PLACE OF PURCHASE. CUSTOMER WILL BE CHARGED FOR THE REPAIR OF ANY UNIT RECEIVED WITHOUT SUCH PROOF OF PURCHASE.

Limited Warranty Limits And Exclusions

This warranty ONLY COVERS failures due to defects in materials or workmanship, and DOES NOT COVER normal wear and tear or cosmetic damage. The warranty ALSO DOES NOT COVER damages which occurred in shipment, or failures which are caused by products not supplied by the warrantor, or failures which result from accidents, misuse, abuse, neglect,

mishandling, misapplication, alteration, faulty installation, set-up adjustments, misadjustment of consumer controls, improper maintenance, power line surge, lightning damage, modification, introduction of sand, humidity or liquids, commercial use such as hotel, office, restaurant, or other business or rental use of the product, or service by anyone other than a Factory Service Center or other Authorized Servicer, or damage that is attributable to acts of God.

THERE ARE NO EXPRESS WARRANTIES EXCEPT AS LISTED UNDER "LIMITED WARRANTY COVERAGE".

THE WARRANTOR IS NOT LIABLE FOR INCIDENTAL OR CONSEQUENTIAL DAMAGES RESULTING FROM THE USE OF THIS PRODUCT, OR ARISING OUT OF ANY BREACH OF THIS WARRANTY. (As examples, this excludes damages for lost time, travel to and from the servicer, loss of or damage to media or images, data or other memory or recorded content. The items listed are not exclusive, but for illustration only.) **ALL EXPRESS AND IMPLIED WARRANTIES, INCLUDING THE WARRANTY OF MERCHANTABILITY, ARE LIMITED TO THE PERIOD OF THE LIMITED WARRANTY.**

Some states do not allow the exclusion or limitation of incidental or consequential damages, or limitations on how long an implied warranty lasts, so the exclusions may not apply to you.

This warranty gives you specific legal rights and you may also have other rights which vary from state to state. If a problem with this product develops during or after the warranty period, you may contact your dealer or Service Center. If the problem is not handled to your satisfaction, then write to the warrantor's Consumer Affairs Department at the addresses listed for the warrantor.

PARTS AND SERVICE, WHICH ARE NOT COVERED BY THIS LIMITED WARRANTY, ARE YOUR RESPONSIBILITY.

Customer Services Directory (United States and Puerto Rico)

Obtain Product Information and Operating Assistance; locate your nearest Dealer or Service Center; purchase Parts and Accessories; or make Customer Service and Literature requests by visiting our Web Site at:

<http://www.panasonic.com/help>

or, contact us via the web at:

<http://www.panasonic.com/contactinfo>

You may also contact us directly at:

1-800-211-PANA (7262)

Monday-Friday 9am-9pm,

Saturday-Sunday 10am-7pm EST

For hearing or speech impaired TTY users, TTY: 1-877-833-8855

Accessory Purchases (United States and Puerto Rico)

Purchase Parts, Accessories and Instruction Books online for all Panasonic Products by visiting our Web Site at:

<http://www.pstc.panasonic.com>

Or, send your request by E-mail to:

npccparts@us.panasonic.com

You may also contact us directly at:

1-800-332-5368 (Phone) 1-800-237-9080 (Fax Only)

(Monday-Friday 9am-9pm EST)

Panasonic National Parts Center

20421 84th Ave S., Kent, WA 98032

(We accept Visa, MasterCard, Discover Card, American Express)

For hearing or speech impaired TTY users, TTY: 1-866-605-1277

As of October 2012

User memo:

DATE OF PURCHASE _____
DEALER NAME _____
DEALER ADDRESS _____
TELEPHONE NUMBER _____

The model number and serial number of this product can be found on either the back or the bottom of the unit. Please note them in the space provided below and keep for future reference.

MODEL NUMBER SC-NE5
SERIAL NUMBER _____

Limited Warranty (ONLY FOR CANADA)

Panasonic Canada Inc.
5770 Ambler Drive, Mississauga, Ontario L4W 2T3

PANASONIC PRODUCT - LIMITED WARRANTY EXCHANGE PROGRAM

Panasonic Canada Inc. warrants this product to be free from defects in material and workmanship under normal use and for a period as stated below from the date of original purchase agrees to, at its option either (a) repair your product with new or refurbished parts, (b) replace it with a new or a refurbished equivalent value product, or (c) refund your purchase price. The decision to repair, replace or refund will be made by Panasonic Canada Inc.

Panasonic Portable / Clock Radio (without Tape, CD, MD)	One (1) year
Panasonic Audio Product	One (1) year
Panasonic DVD Product	One (1) year
Accessories including rechargeable batteries	Ninety (90) days

This warranty is given only to the original purchaser, or the person for whom it was purchased as a gift, of a Panasonic brand product mentioned above sold by an authorized Panasonic dealer in Canada and purchased and used in Canada, which product was not sold "as is", and which product was delivered to you in new condition in the original packaging.

IN ORDER TO BE ELIGIBLE TO RECEIVE WARRANTY SERVICE HEREUNDER, A PURCHASE RECEIPT OR OTHER PROOF OF DATE OF ORIGINAL PURCHASE, SHOWING AMOUNT PAID AND PLACE OF PURCHASE IS REQUIRED

LIMITATIONS AND EXCLUSIONS

This warranty ONLY COVERS failures due to defects in materials or workmanship, and DOES NOT COVER normal wear and tear or cosmetic damage. The warranty ALSO DOES NOT COVER damages which occurred in shipment, or failures which are caused by products not supplied by Panasonic Canada Inc., or failures which result from accidents, misuse, abuse, neglect, mishandling, misapplication, alteration, faulty installation, set-up adjustments, misadjustment of consumer controls, improper maintenance, power line surge, lightning damage, modification, introduction of sand, humidity or liquids, commercial use such as hotel, office, restaurant, or other business or rental use of the product, or service by anyone other than an Authorized Servicer, or damage that is attributable to acts of God.

Dry cell batteries are also excluded from coverage under this warranty.

THIS EXPRESS, LIMITED WARRANTY IS IN LIEU OF ALL OTHER WARRANTIES, EXPRESS OR IMPLIED, INCLUDING ANY IMPLIED WARRANTIES OF MERCHANTABILITY AND FITNESS FOR A PARTICULAR PURPOSE. IN NO EVENT WILL PANASONIC CANADA INC. BE LIABLE FOR ANY SPECIAL, INDIRECT OR CONSEQUENTIAL DAMAGES RESULTING FROM THE USE OF THIS PRODUCT OR ARISING OUT OF ANY BREACH OF ANY EXPRESS OR IMPLIED WARRANTY. (As examples, this warranty excludes damages for lost time, travel to and from the Authorized Servicer, loss of or damage to media or images, data or other memory or recorded content. This list of items is not exhaustive, but for illustration only.)

In certain instances, some jurisdictions do not allow the exclusion or limitation of incidental or consequential damages, or the exclusion of implied warranties, so the above limitations and exclusions may not be applicable. This warranty gives you specific legal rights and you may have other rights which vary depending on your province or territory.

CONTACT INFORMATION

For product information and operation assistance, please contact:

Our Customer Care Centre: Telephone #: 1-800-561-5505
Fax #: (905) 238-2360

For defective product exchange within the warranty period, please contact the original dealer or our Customer Care Centre.

Made for



iPod



iPhone



iPad



"Made for iPod", "Made for iPhone", and "Made for iPad" mean that an electronic accessory has been designed to connect specifically to iPod, iPhone, or iPad, respectively, and has been certified by the developer to meet Apple performance standards. Apple is not responsible for the operation of this device or its compliance with safety and regulatory standards. Please note that the use of this accessory with iPod, iPhone, or iPad may affect wireless performance. AirPlay, the AirPlay logo, iPad, iPhone, iPod, iPod classic, iPod nano, and iPod touch are trademarks of Apple Inc., registered in the U.S. and other countries.

The Wi-Fi CERTIFIED Logo is a certification mark of the Wi-Fi Alliance. The Wi-Fi Protected Setup Mark is a mark of the Wi-Fi Alliance. "Wi-Fi", "Wi-Fi Protected Setup", "WPA" and "WPA2" are marks or registered marks of the Wi-Fi Alliance.



MPEG Layer-3 audio coding technology licensed from Fraunhofer IIS and Thomson.

The Bluetooth® word mark and logos are owned by the Bluetooth SIG, Inc. and any use of such marks by Panasonic Corporation is under license. Other trademarks and trade names are those of their respective owners.

Windows is a trademark or a registered trademark of Microsoft Corporation in the United States and other countries.

-If you see this symbol-

Information on Disposal in other Countries outside the European Union



This symbol is only valid in the European Union. If you wish to discard this product, please contact your local authorities or dealer and ask for the correct method of disposal.



As an ENERGY STAR® Partner,* Panasonic has determined that this product meets the ENERGY STAR® guidelines for energy efficiency.

*For Canada only: The word "Participant" is used in place of the word "Partner".



Panasonic Consumer Marketing
Company of North America,
Division of Panasonic Corporation of
North America
One Panasonic Way, Secaucus,
New Jersey 07094
<http://www.panasonic.com>

Panasonic Canada Inc.
5770 Ambler Drive
Mississauga, Ontario
L4W 2T3
www.panasonic.ca

