

## ImageCreator 1.5

---

(PT-P1SD series)

ImageCreator 1.5 is application software that is supplied for the user of the video projector “PT-P1SD series” via the following home page.

**Home page : <http://panasonic.co.jp/pavc/global/projector/>**

**ImageCreator 1.5 allows the user to :**

- Convert Microsoft PowerPoint files into JPEG files that comply with the DCF (Design rule for Camera File system) standard (see page 12).
- Convert JPEG files into JPEG files that comply with the DCF standard.
- Sort JPEG files.
- Write JPEG files into an SD memory card.

**Note for the user who has used ImageCreator 1.0A :**

- Use ImageCreator 1.5 for PT-P1SD series.
- Use ImageCreator 1.0A for PT-L735NT series, PT-L780NT series or PT-L730NT series.

# Contents

---

- System requirements ..... 3**
- Installation and Startup..... 4**
  - Installation ..... 4
  - Startup ..... 4
- Functions on the Operational Windows ..... 5**
  - Main window ..... 5
  - Convert & Save window ..... 6
- Using ImageCreator 1.5 ..... 7**
  - Setting a drive name and a destination folder number ..... 7
  - Capturing presentation files created with  
Microsoft PowerPoint 97/2000/2002 ..... 7
  - Capturing JPEG files ..... 8
  - Capturing files by drag-and-drop manner ..... 8
  - Sorting images ..... 9
  - Deleting images ..... 9
  - Adjusting the quality of the images to write into an SD memory card .. 10
  - Writing the captured images into an SD memory card ..... 11
- DCF Standard..... 12**
  - Folder (directory) name..... 12
  - File name ..... 12
  - File format ..... 12
  - Example of folder structure ..... 13
- Uninstall ..... 14**

**Note :**

- Unauthorized use or reproduction of part or all of this software and manuals is strictly prohibited.
- Panasonic cannot be held liable for any effects resulting from the use of this software and manuals.
- Panasonic reserves the right to revise this software specifications and manual contents without notice.

# System requirements

---

The computer must meet the following requirements in order to use this software.

OS : Windows 98SE (Second Edition) /Me (Millennium Edition)

/2000 Professional/XP Home Edition/XP Professional

CPU : Pentium III or faster or compatible processor

RAM : 128 MB or more (256 MB or more for Windows 2000/XP)

Empty hard disk capacity : 60 MB or more

Necessary software : Microsoft PowerPoint 97, 2000 or 2002 must be installed.

**Note :**

Note that operation is not guaranteed when used with system environments other than the above or on homemade computers.

**Operation is not guaranteed for all computers that meet the above conditions.**

- Windows and Microsoft PowerPoint are trademarks or registered trademarks of U.S. Microsoft Corporation in the U.S. and other countries.
- Other company names, product names or other names noted in this manual are trademarks or registered trademarks of the respective companies. Note that ® and TM marks are not indicated in the text of this manual.

# Installation and Startup

---

## ■ Installation

### Notes :

- Shut down all software currently active on Windows. Otherwise, installation may not be possible.
- Administrator authority is required for installation with Windows 2000/XP.

- 1 Access the Panasonic home page**  
(<http://panasonic.co.jp/pavc/global/projector/>) and click [Software].
- 2 Follow the instructions on the page to download and decompress the software.**
- 3 Double-click [setup.exe] in the decompressed folder.**  
The installer starts up.  
Follow the instructions on the screen to install the software.

## ■ Startup

Select [Start] → [(All) Programs] → [Panasonic] → [ImageCreator ver. 1.5] → [ImageCreator 1.5].

### To exit the program :

Click [EXIT] or [⊠] on the main window.

# Functions on the Operational Windows

## Main window

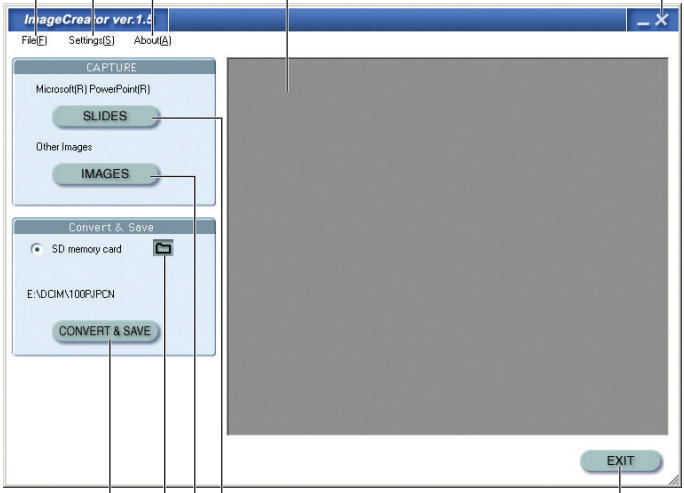
[Import slides], [Import file], [Convert and save] and [Close] are available in this menu.

The JPEG quality can be adjusted.

The version of this software can be checked.

The images captured into this software are displayed in reduced size. They can be sorted or deleted by right clicking with the mouse.

Clicking here exits the software.



The screenshot shows the 'ImageCreator ver.1.1' window. The title bar includes 'File(F)', 'Settings(S)', and 'About(A)'. The 'CAPTURE' section contains 'Microsoft(R) PowerPoint(R)' with a 'SLIDES' button and 'Other Images' with an 'IMAGES' button. The 'Convert & Save' section shows 'SD memory card' with a folder icon, the path 'E:\DCIM\100\PCDN', and a 'CONVERT & SAVE' button. An 'EXIT' button is located at the bottom right of the main window area.

Clicking here exits the software.

Clicking here exits the software.

Clicking here captures presentation files created with Microsoft PowerPoint.

Clicking here captures JPEG files.

Clicking here displays the window to set a destination drive name and a folder number.

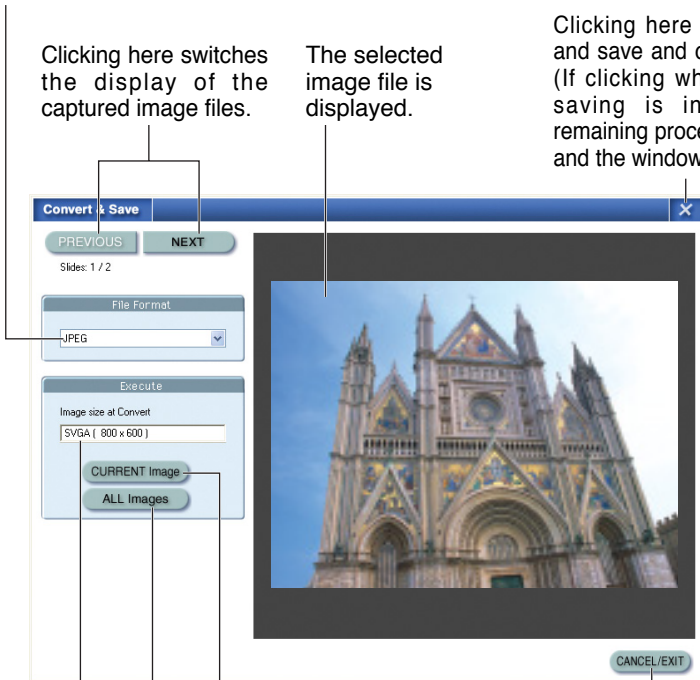
Clicking here displays the window to make format conversion (JPEG conversion) and size conversion of the captured files and to save them.

# Functions on the Operational Windows (continued)

## ■ Convert & Save window

Click [CONVERT & SAVE] on the main window to display this window.

This is the compression format of the files to be saved.



Clicking here switches the display of the captured image files.

The selected image file is displayed.

Clicking here stops conversion and save and closes the window. (If clicking while converting or saving is in progress, the remaining process will be stopped and the window will be closed.)

Clicking here saves the selected image file in the specified compression format and screen size into an SD memory card. The name of the saved file will be generated automatically (see page 12).

Clicking here stops conversion and save and closes the window. (If clicking while converting or saving is in progress, the remaining process will be stopped and the window will be closed.)


Clicking here saves all the captured image files in the specified compression format and screen size into an SD memory card. The name of the saved file will be generated automatically (see page 12).

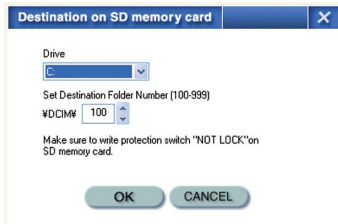
This is the screen size of the files to be saved.

# Using ImageCreator 1.5

---

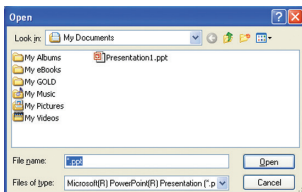
## ■ Setting a drive name and a destination folder number

Click [  ] on the main window and set a drive name and a destination folder number.



## ■ Capturing presentation files created with Microsoft PowerPoint 97/2000/2002

- 1 Click [SLIDES] on the main window.  
The following window appears.



- 2 Select a desired presentation file and click [Open].  
When completing the capture, the thumbnail is created.

### Note :

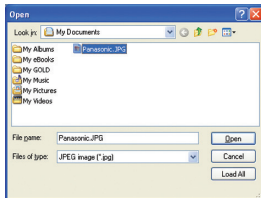
- To use this software, Microsoft PowerPoint 97, 2000 or 2002 must be installed on the computer.
- Only presentation files saved in PPT format (with a .ppt extension) can be captured. A file saved in other format (for example, a file with a .pps extension) must be opened with Microsoft PowerPoint and saved in PPT format.

# Using ImageCreator 1.5 (continued)

---

## ■ Capturing JPEG files

- 1** Click **[IMAGES]** on the main window.  
The following window appears.



- 2** Select a desired image file and click **[Open]** or **[Load All]**.

When completing the capture, the thumbnail is created.

**[Open]** :

Captures one each of files.

**[Load All]** :

Captures all the image files in the currently open folder.

## ■ Capturing files by drag-and-drop manner

Select a desired file and drag and drop it into the shortcut icon or the window of ImageCreator 1.5.

When performing it into the shortcut icon, ImageCreator 1.5 starts automatically and captures the file.

### **Note :**

The following images cannot be captured even if they are in JPEG format.

- Images with 10,000 dots or more vertically or horizontally
- JPEG images in CMYK (Cyan, Magenta, Yellow and Black)
- Images compressed in JPEG2000



# Using ImageCreator 1.5 (continued)

---

## ■ Sorting images

**Drag and drop a desired image onto a desired location on the thumbnail window.**

A vertical bold line appears on the location to be dropped between images.

**Note :**

Alternatively, the following steps may be taken.

- (1) Right-click on a desired image to display the submenu and select [Sort...].
- (2) Move the image on the [Shuffle image files] window.

## ■ Deleting images

### **1 Select images for deletion on the thumbnail window.**

**While pressing the [CTRL] key, repeat clicking :**

Two or more images can be selected.

**While pressing the [SHIFT] key, click :**

All the images between two images can be selected.

### **2 Right-click on the selected images to display the submenu and select [Delete slide].**

If selecting [Delete All], all the captured images will be deleted.

### **3 Click [OK] when the confirmation window appears.**

The images will be deleted from the thumbnail window.

**Note :**

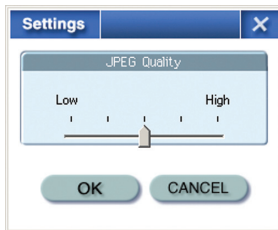
Even when the captured images are deleted, the original images will not be deleted.

# Using ImageCreator 1.5 (continued)

---

## ■ Adjusting the quality of the images to write into an SD memory card

- 1** Click [Preferences...] on the [Settings] menu of the main window.  
The following window appears.



- 2** Adjust the image quality with the slide bar and click [OK].  
If adjusting to a higher quality, the file size becomes larger and if adjusting to a lower quality, the file size becomes smaller. The size of the lowest quality file is approximately one fifth of that of the highest quality file.

**Note :**

The JPEG format is suitable for natural pictures such as photographs. For Presentation files created with Microsoft PowerPoint and illustrations created with graphic software, there may be significant loss of picture quality even if adjusting to a higher quality.

# Using ImageCreator 1.5 (continued)

---

## ■ Writing the captured images into an SD memory card

### 1 Click [CONVERT & SAVE] on the main window.

The [Convert & Save] window appears.

### 2 Click [CURRENT Image] or [ALL Images].

The file format is converted automatically into DCF format (see the next page).

**[CURRENT Image] :**

Writes one each of the files

**[ALL Images] :**

Writes all the captured JPEG files.

#### **Note :**

- When converting image formats using this software, folder and file names that comply with the DCF standard will be automatically assigned. (Folder names consist of three numerals followed by "PJPCN" and file names consist of "JPCN" followed by four numerals.)
- To stop the process while converting or writing files, click [CANCEL/EXIT].
- All the captured images are converted so that the aspect ratio will be 4:3. Images with other aspect ratio than 4:3 will not be reproduced in correct image.
- Some files created with Microsoft PowerPoint 97 may cause an error during their converting process. If this occurs, converting the files with a computer in which Microsoft PowerPoint 2000 has been installed can solve the problem.
- If image files are pasted in combined Microsoft PowerPoint 97 and Windows 98, normal conversion is not available.

# DCF Standard

---

For data recorded by digital cameras, folder and file names that comply with the DCF standard will be automatically assigned. The DCF standard has the following requirements. Files or folders that do not comply with these requirements cannot be recognized by the projector. If changing the folder and file names on computers, the projector may not recognize them correctly.

## ■ Folder (directory) name

- Folders are created as sub-folders of the DCIM folder on the SD memory card.
- Data located in folders other than the DCIM folder is not recognized.
- Folder names consist of three numerals (folder number) followed by five alphanumeric characters. (Example: 100ABCDE)
- Numbers between 100 and 999 can be used for the three numerals and the alphanumeric characters can be taken from the following set of 37 characters: 0123456789ABCDEFGHIJKLMNQRSTUUVWXYZ\_ (No distinction is made between upper-case and lower-case alphabetic characters. Double-byte characters cannot be used.)
- Multiple folders using the same three-digit combination (folder number) cannot be recognised correctly.
- Folder sub-hierarchies are not supported.

## ■ File name

- File names consist of four alphanumeric characters followed by four numerals (file number), followed by “.JPG” (extension). (Example: ABCD0001.JPG)
- The alphanumeric characters can be taken from the following set of 37 characters: 0123456789ABCDEFGHIJKLMNQRSTUUVWXYZ\_ and numbers between 0001 and 9999 can be used for the four numerals (No distinction is made between upper-case and lower-case alphabetic characters. Double-byte characters cannot be used.)
- Multiple files using the same four-digit combination (file number) cannot be recognized correctly.

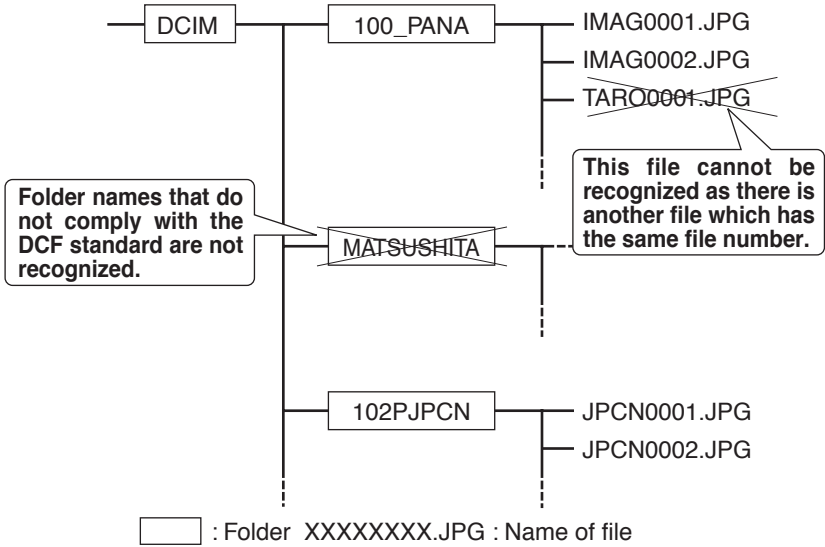
## ■ File format

- Only Exif2.2-compliant JPEG images are supported.

# DCF Standard (continued)

---

## Example of folder structure



# Uninstall

---

- 1** Select [Start] → [(All) Programs] → [Panasonic] → [ImageCreator ver. 1.5] → [Remove ImageCreator 1.5].
- 2** Follow the instructions on the screen to uninstall the software.

---

**Matsushita Electric Industrial Co., Ltd.**

Web Site: <http://www.panasonic.co.jp/global/>

© 2005 Matsushita Electric Industrial Co., Ltd. All Rights Reserved.

M1205-0