

Panasonic

Operating Instructions Part 1
Digital Cellular Phone

A 100
A 101
A 102



EB-A 100
EB-A 101
EB-A 102
Mobile Phone



*Before operating this equipment please read these instructions
(parts 1 and 2) completely.*

Contents

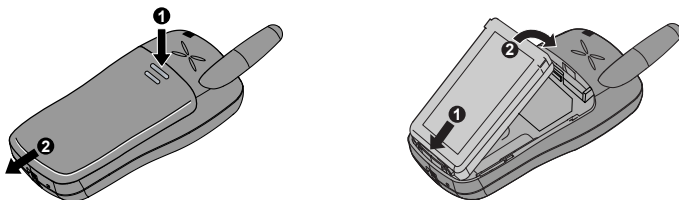
Getting Started	1	My Numbers	46
Fitting and removing the battery	1	Hotkey dial	47
Fitting and removing the SIM	4	My Contacts	47
Charging the battery	5	Calendar Menu	48
Battery level indicator	6	New event	48
Low battery power warning	6	View event	49
Your phone — A100	7	Key Guard Menu	50
Your phone — A101	8	Messages Menu	51
Your phone — A102	9	Create	52
Key functions	10	Inbox	55
Displays	12	Outbox	56
Basic Operations	15	Archive	57
Switching the phone on/off	15	User Messages	58
Making a call	15	Memory status	58
Ending a call	16	Settings	59
Answering a call	17	Cell Broadcast	61
In-call operations	18	Phone Menu	63
Incoming call while on a call	20	Call Service	64
DTMF	21	Call Diverts	68
Downloads	22	Security	69
Text entry	24	Network	72
Menu Display	27	Application Menu	73
Menu Structure	28	Clock	74
My Phone Menu	29	Calculator	76
Sounds	30	Currency	77
Display	31	Melody composer	78
Language	33	Phone menu	79
Alerts	33	Records Menu	80
Profiles	34	Last dialled/Answered/ Unanswered number	80
Auto answer	36	Delete all	81
Any key answer	36	Accessories	82
Defaults	36	How to Identify a Genuine Panasonic Accessory	82
Games Menu	37	Troubleshooting	83
Selecting games	37	Important Error Messages	85
Contacts Menu	40	Glossary of Terms	86
Browse	41	Index	87
Create	41		
Groups	45		
Memory status	46		

Getting Started

Fitting and removing the battery

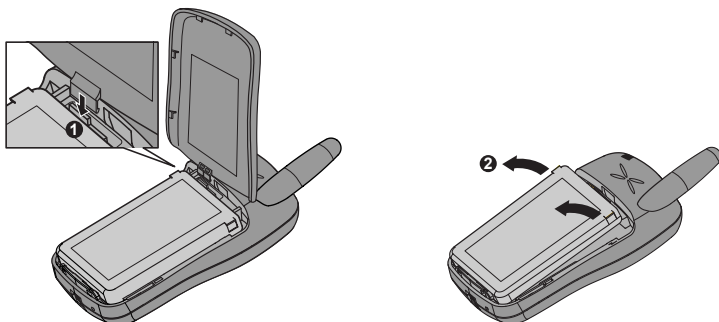
Before removing the battery, ensure that the phone is switched off and the charger is disconnected from the phone.

Fitting the battery — A100



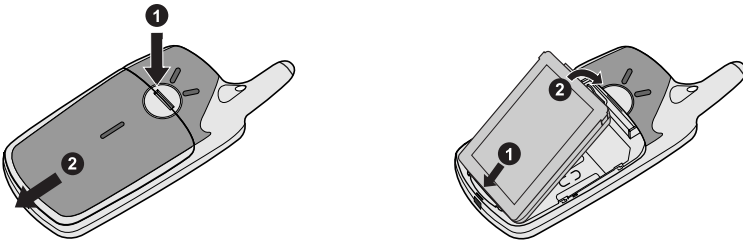
Remove the battery compartment cover. Insert the battery ensuring the 3 gold contacts align with the 3 gold pins in the phone. When replacing the cover, ensure to slide upward to the top of the phone.

Removing the battery — A100



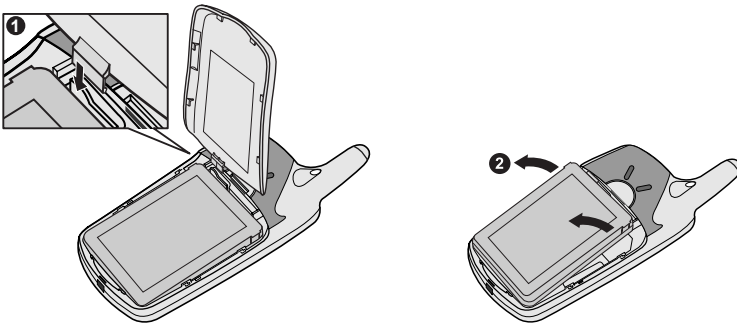
Push and hold the release latch **1** towards the top of the phone using the cover clip, then lift the battery out **2**.

Fitting the battery — A101



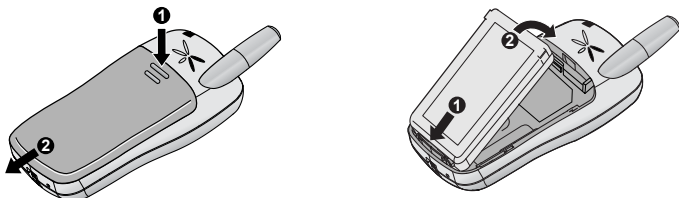
Remove the battery compartment cover. Insert the battery ensuring the 3 gold contacts align with the 3 gold pins in the phone. When replacing the cover, ensure to slide upward to the top of the phone.

Removing the battery — A101



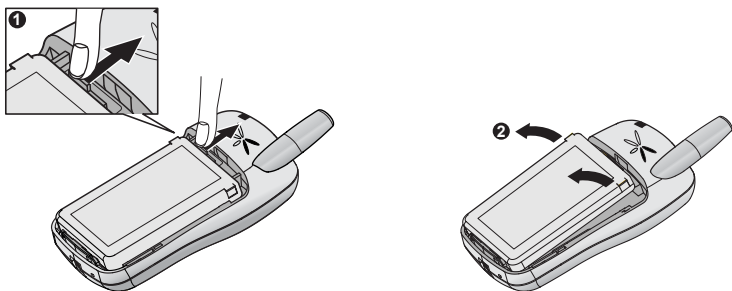
Push and hold the release latch **1** towards the top of the phone using the cover clip, then lift the battery out **2**.

Fitting the battery — A102



Remove the battery compartment cover. Insert the battery ensuring the 3 gold contacts align with the 3 gold pins in the phone. When replacing the cover, ensure to slide upward to the top of the phone.

Removing the battery — A102

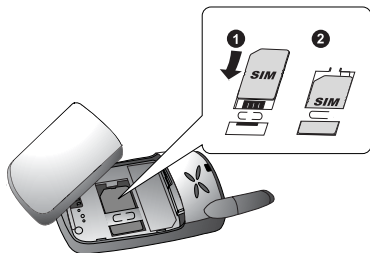


Push and hold the release latch **1** towards the top of the phone, then lift the battery out **2**.

Fitting and removing the SIM

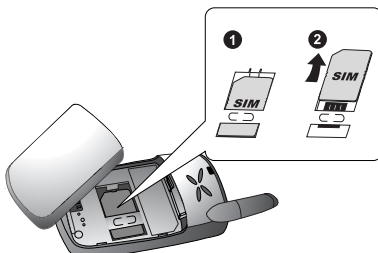
The SIM is located under the battery.

Fitting the SIM — A100



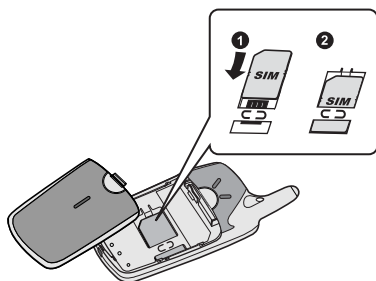
Ensure the gold contacts are facing downwards before sliding the SIM into the SIM holder.

Removing the SIM — A100



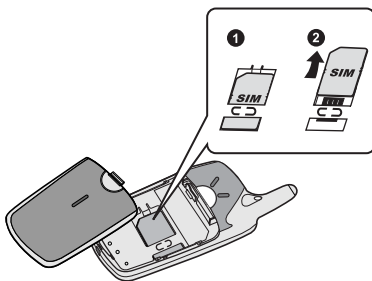
While holding the tab down, slide the SIM out.

Fitting the SIM — A101



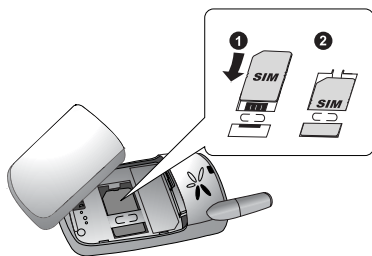
Ensure the gold contacts are facing downwards before sliding the SIM into the SIM holder.

Removing the SIM — A101



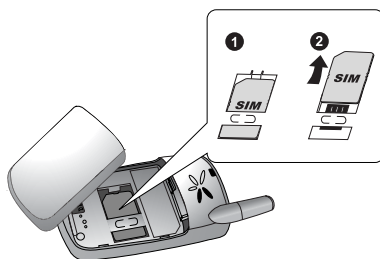
While holding the tab down, slide the SIM out.

Fitting the SIM — A102



Ensure the gold contacts are facing downwards before sliding the SIM into the SIM holder.

Removing the SIM — A102



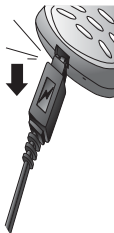
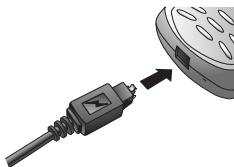
While holding the tab down, slide the SIM out.

Charging the battery

Connecting and disconnecting the Travel Charger





The battery must be fitted in the phone before the charger is connected. Insert the Charging Connector into the socket at the base of the phone before connecting the charger to the mains outlet. Once connected, the Battery level indicator will start scrolling (see “Battery level indicator” on page 6). It is recommended to charge the battery for a minimum of 4 hours before first use.

NOTE: DO NOT force the connector as this may damage the phone and/or the charger. If the battery has been deeply discharged, it may take several minutes before the Battery level indicator is displayed.



When charging is complete, disconnect the charger from the outlet before removing the plug from the phone.

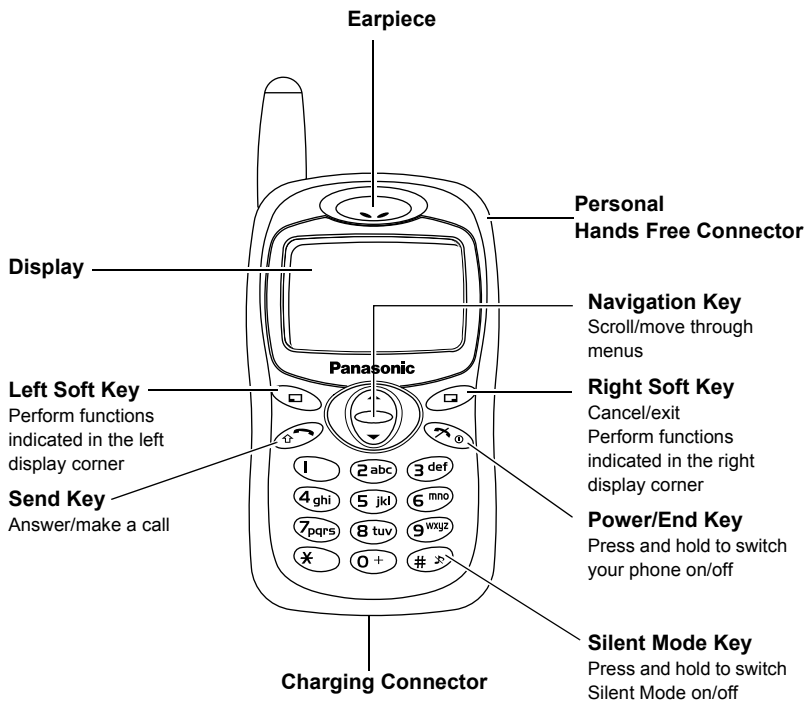
Battery level indicator

	While charging	Charging complete
Phone on		
Phone off		

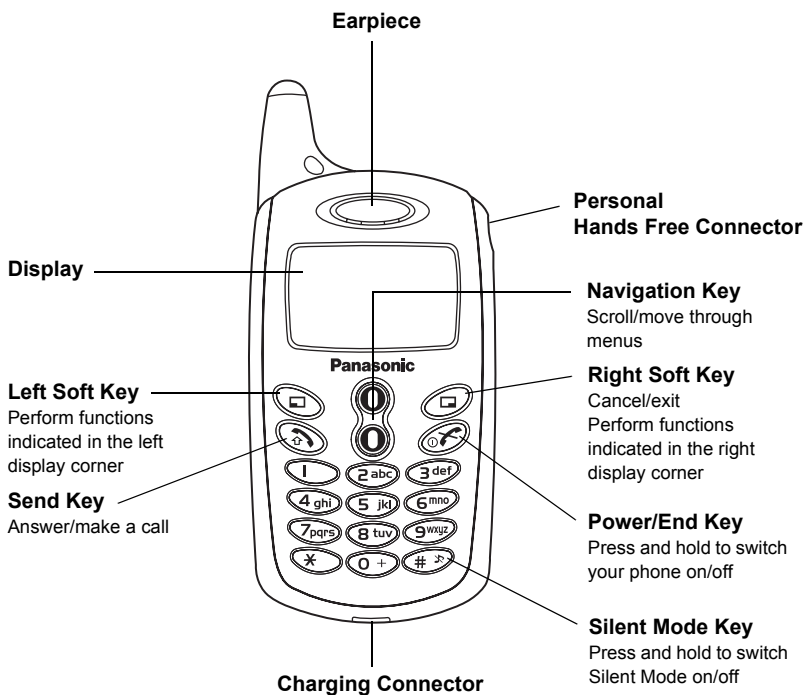
Low battery power warning

When the battery power is low, a “Battery is Low” message will be displayed. If this occurs during conversation, finish your call immediately. The power will automatically switch off after the warning tone. Fully recharge the battery. See “Charging the battery” on page 5. (Calls can be made and received while the phone is charging.)

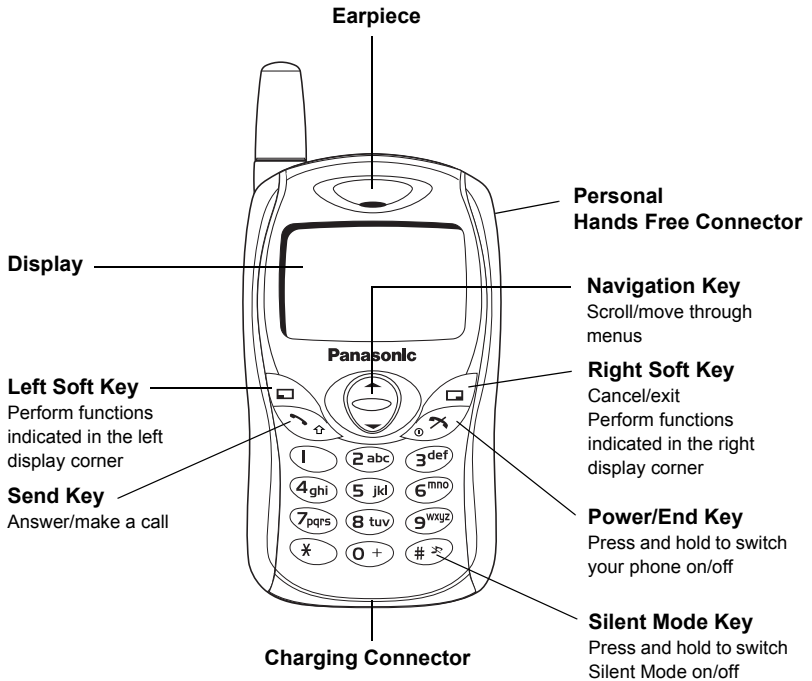
Your phone — A100












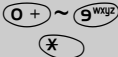
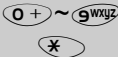




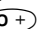



Your phone — A101



Your phone — A102



Key functions

A100 Key	A101 Key	A102 Key	Function
			Navigation Key: Scroll or move through menus, text and phone numbers. In idle mode, press to display the “Contacts” menu.
			Left Soft Key: Perform the functions displayed in the lower left corner. In idle mode, press to activate the “Menu” display, or press and hold to activate the “Profiles” menu.
			Right Soft Key/Cancel or Exit Key: Perform the functions displayed in the lower right corner. Mainly used to cancel and return to the previous menu level. In text entry mode, press to delete text. In idle mode, press and hold to activate the “Messages” menu. When receiving a call, press to mute the ringtone.
			Numeric Keys: Enter numbers. Press and hold one of the keys from  to  for Hotkey dialling. Press and hold  to enter a “+” (international access code) or “P” (extension number code). To dial an extension number, dial the phone number first, press and hold  to add a “P”, then enter the extension number. In text entry mode, enter text, numbers and characters.
			Send Key: Make a call or answer a call. In idle mode, press to check the last dialled list. In text entry mode, press to switch between input methods.

A100 Key	A101 Key	A102 Key	Function
			Power/End Key: End/reject a call. During key operation, press to return to the previous display. Press and hold to return to idle mode. In idle mode, press and hold to switch phone on/off.
			Silent Mode Key: In idle mode, press and hold to switch the Silent Mode (Vibrator on/Ring off) on and off. In text entry mode, press to switch T9 smart English input mode on/off, or press and hold to enter symbols.

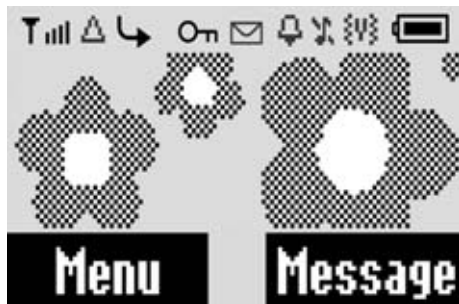
During a call

Minimal menu options are available during a call by pressing the following key options.

A100 Key	A101 Key	A102 Key	Function
			Activate Hands free, Conference call, Call transfer, Contacts list, Messages menu, Call status.
			Swap between two calls. Put the call on hold.
			Increase the volume while on a call.
			Decrease the volume while on a call.
			Display the last dialed records list. Answer another call. If a phone number is entered, hold the active call and call the number.
			Send DTMF. Press and hold to switch the Hands free speaker on/off

Display

Idle display



10:02

The clock appears on the display one minute after you press the last key.

The clock position changes every minute.









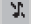

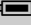
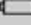
NOTE: All screen images in this manual are simulated.

NOTE: Some services described in this manual are network dependent or may only be available on a subscription basis. Some functions are SIM dependent.










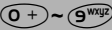
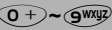







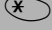
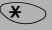

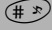
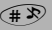

For more information, contact your service provider.

Status icons

The status icons are displayed or animated according to the currently activated functions. The Antenna, Signal and Battery icons are displayed when the handset is switched on and connected to a network. If there is no connection with the network, the Signal icon will not be displayed.

Icon	Meaning
	Antenna and signal strength
	Registered to a non-home network – roaming
	Call Diverts is on
	Key Guard is enabled
	Message area is full
 (Flashing)	Unread message is stored
	Voice mail indicator (voice mail has been received)
	Alarm is set
	All tones or ring volume is off
	Vibrator is on
	Battery charge level
	Low battery



Symbols in the Manual

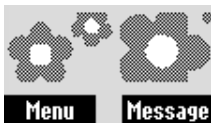
A100 Symbols	A101 Symbols	A102 Symbols	Meaning
			Press the Navigation Key in the direction indicated by the arrow
			Press Left Soft Key
			Press Right Soft Key
			Press numeric Keys
			Press Send Key
			Press Power/End Key
			Press Asterisk Key
			Press Silent Mode Key

Symbols used throughout the manual are based on the A100.

Basic Operations

Switching the phone on/off

1. Press and hold  for 2 to 3 seconds
2. The phone starts in idle mode
3. Press and hold  again to switch the power off




Making a call


Ensure that the signal strength meter shows network coverage is available in the current area.

➤ To make a call, start in idle mode.




Standard dialling

1. Enter the area code and phone number 
➤ The dialled number is displayed
2. When the other party answers, talk into the Microphone




Earpiece Volume:

During a call,  to adjust the earpiece volume

Using the contacts list

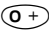

1.  **Contacts**
2.  required name or phone number 

Last number dialling

1. 
2.  required name or phone number 


International dialling

The international access code (+) and the destination country/region code should be entered, followed by the area code and phone number.


1. Press and hold  until “+” is displayed, then enter the country / region code
2. Enter the area code and phone number 

NOTE: Many countries/regions include an initial “0” in the area code. This should, in most cases, be omitted when dialling international numbers. If you have difficulties making international calls, contact your service provider.

Emergency call

To make an emergency call, the antenna () must be present

When SIM is inserted:

Enter the emergency number 112 

When SIM is not inserted:


Enter the emergency number 112 

OR

 (SOS) > “**Emergency call**”  (Yes)

NOTE: Most countries support the international emergency number 112. If you find the number does not work on your phone, please call your service provider. Emergency calls without a SIM is country or network operator dependent.

Ending a call

To hang up, 

- The duration of the call will be displayed.
- When the “Max cost” is on, the remaining units will be displayed.

For setting the “Max cost”, see “Maximum cost:” on page 67.

Answering a call



OR

If “**Any key answer**” is on,

From idle mode

press any key except .

(See “Any key answer” on page 36.)

Volume:

From **My Phone**

1. **Sounds >Volume** (Select)
2. Adjust the volume level (OK)

Quick touch silent mode:

To quickly set the ringtone off () and the vibrator on (), press and hold .

To resume, press and hold again.

One click mute on incoming call:

To set the ring tone off,

(Mute)



•If you want to reply to the call, (Reply)

•If you want to reject the call, (Reject).

Reject incoming call:



In-call operations

During a call, the following options are available by pressing  (Menu) or  (Hold)

Hands free/Hand held

You can switch the phone between hands free and hand held.

During a call:






1.  (Menu)
2.  **Hands free / Hand held**  (Select)

Contacts

You can access your Contacts list that is stored in SIM in your phone.

During a call:






1.  (Menu)
2.  **Contacts**  (Select)

Messages

You can create, check, or send a message while on a call. See "Messages Menu" on page 51.

During a call:




1.  (Menu)
2.  **Messages**  (Select)


Hold

You can put a call on hold.

During a call:

 (Hold)

To resume:

 (Back)

10:02
+7036626262


Menu

Hold

NOTE: This function is network dependent.

Making a second call

During a call:





1. Enter the second phone number or select a phone number from the Contacts list (see “Contacts” on page 18).
2.  The first call is put on hold

NOTE: This function is network dependent.

Incoming call while on a call

NOTE: Call waiting must be on – see “Call waiting” on page 64
This function is network dependent.




During a call, you may receive another call.

1. To answer another call,  (First call is placed on hold.)
To disconnect another call,  (Reject)
2. During a conversation with a second caller,  (Swap) or  (Menu) and select one of the following options:

Conference

You can make a conference call with up to 5 parties

During a call:




1.  (Menu)
2.  **Conference**  (Select)

NOTE: This function is network dependent.

Call transfer

Call transfer connects the active calling party to the other party on hold, then disconnects your line, leaving the two callers in the conversation.

During a call:

1.  (Menu)
2.  **Call transfer**  (Select)

NOTE: This function is network dependent.

Call status

Call status allows you to disconnect the line or put a call on hold with the active party.

During a call:

1.  (Menu)
2.  **Call status**  (Select)



Swap


Call held
7036626262

Menu

Swap

When you are connected to two calls, you can switch to the other calls.

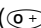


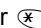
During a call:

 (Swap) to change to the other call.

DTMF

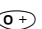

DTMF can be sent during a conversation. These are often used to access voice mail, paging and computerised home banking. For example, you may need to enter a number to remotely access voice mail messages. A phone number may be stored in the Contacts together with a DTMF sequence, allowing the number to be dialled upon recall and the DTMF number to be sent automatically.

Send DTMF during a call:

Enter digits ( ~ ,  or .

Pause dial

Using pauses allows you to send DTMF automatically.



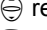


1. Enter the phone number
 2. Press and hold  until a "P" is displayed at the end of the phone number entered
 3. Enter DTMF digits after the pause, e.g. enter the number to access voice mail messages
 4. 
- When the call is connected the DTMF sequence will be sent after 3 seconds.

Downloads

Ringtones


Ringtones can be downloaded to your phone via the SMS service. When a message is received containing a ringtone, notification appears on the idle screen.

When a ringtone message appears on the idle display:

1.  (View) to check the downloaded ringtone title
2.  (Save)
3.  required slot  (Select)
4.  (OK)

➤ To save the downloaded ringtone into an empty slot, select "**Download 1**" or "**Download 2**" in step 3.

Downloaded ringtones can also overwrite pre-defined ringtones.



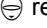


➤ To reject downloaded ringtones, select  (Reject) in step 2.


NOTE: This function is country and operator dependent.

Wallpapers

Wallpapers can be downloaded to your phone via the SMS service. When a message is received containing a wallpaper, notification appears on the idle screen.

When a wallpaper message appears on the idle display:

1.  (View) to check the downloaded wallpaper
2.  (Save)
3.  required slot  (Select)
4.  (OK)

- To save the downloaded wallpaper into an empty slot, select **“Wallpaper 1”** or **“Wallpaper 2”** in step 3. Downloaded wallpapers can also overwrite pre-defined wallpapers.
- To reject downloaded wallpapers, select  (Reject) in step 2.

NOTE: This function is country and operator dependent.


Text entry

You can use alphanumeric characters to enter details into the Contacts list, to create text, etc.

Key	Text mode		Numeric (0 ~ 9)	
	T9®(T9Abc, T9abc, T9ABC) (Input language: English)	Multi tap (Input mode indicator: Abc, abc or ABC)		
	Space 0. , ? ! + - = : ; ' " ' ; _		0	
	1 / () < > [] { } % ~ £ & (1 / () < > [] { } % ~ £ &)		1	
	A B C 2 –	(a b c 2 –)	A B C 2 Ä (a b c 2 ä à ç)	2
	D E F 3 –	(d e f 3 –)	D E F 3 É (d e f 3 é è)	3
	G H I 4 –	(g h i 4 –)	G H I 4 (g h i 4 i)	4
	J K L 5 –	(j k l 5 –)	J K L 5 (j k l 5)	5
	M N O 6 –	(m n o 6 –)	M N O 6 Ö Ñ (m n o 6 ö ñ ò)	6
	P Q R S 7 –	(p q r s 7 –)	P Q R S 7 (p q r s 7 ß)	7
	T U V 8 –	(t u v 8 –)	T U V 8 Ü (t u v 8 ü ù)	8
	W X Y Z 9 –	(w x y z 9 –)	W X Y Z 9 Æ Ø Å (w x y z 9 æ ø å)	9
	Shift mode			
	* Γ Δ Θ Λ Ξ Π Σ Φ Ψ Ω		*	
	(Hold) Space # £ \$ ¥ ¢ @ \ \$ ^ ↵		#	

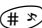
NOTE: Displayed characters in the T9® mode vary depending on the selected input language. Use to toggle T9® On/Off. If the combination of letters typed has produced a word which is not the one you require, press repeatedly until the correct word is displayed. Then continue to the next word. When “–” is reached, press to spell the word you require.

Shift mode change

In text entry mode, you can change mode by pressing and holding .

Multi tap	Tegic
Abc -> abc -> ABC -> 123	T9Abc -> T9abc -> T9ABC -> 123

Text Input mode change

In text entry mode, to switch T9[®] mode On/Off, press .

Auto capital change


Auto capital affects Abc and T9Abc.

When Input mode is changed to Abc or T9Abc, the first character is input as upper case and subsequent letters as lower case.

When one of the following characters [. (Period) or ! or ?] is input before a space, the next character is input as upper case.







T9[®] Text Input

Using this mode of text input dramatically reduces the required number of key presses.

Press a key once for any letter you require on that key. The desired letter may not be displayed. Continue pressing other keys until the end of a word is reached, then check that the word has been typed correctly before continuing on to the next word. If the combination of letters typed has produced a word which is not the one you require, press  repeatedly until the correct word is displayed. Then continue to the next word.

Example of Text Input in T9® Mode

To type a new message, follow these steps:

1. At the beginning of a new message press and hold  (Clear) to delete previous text, if necessary
2. Press  to change letter case, if necessary
3. Press     “Call” is displayed

Note that the displayed words change as you type. Always type to the end of the word before editing.

T9® Languages can be selected from T9 Input – see “T9 Input” on page 33.

If the word you require is not in the internal dictionary, then it should be entered using the Multi tap (ABC) mode.

Other text modes

Multi tap mode (Abc, abc or ABC):

Each time a key is pressed in quick succession, the next character available on that key is displayed. Releasing the key or pressing another key enters the character displayed. The cursor moves to the next position.

In T9 (Abc) or Multi tap (Abc) mode, the first entered letter in a sentence is in upper case.


Menu Display



NOTE: Menu display contents are dependent on your SIM.

The menu system provides the means for accessing the functions which do not have their own dedicated buttons on the keypad.

From idle mode

1.  (Menu)

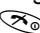

The main menu display has 9 menu options
(See “Menu Structure” on page 28.)

2.  required menu  (Select)

OR

press a number next to a menu icon to access a menu option directly.

To go back to the Menu display,

 or  repeatedly until to the Menu display returns.

Menu Structure

The 9 main menus are as follows:



My Phone
Sounds
Display
Language
Alerts
Profiles
Auto answer
Any key answer
Defaults



Games
Hit Mouse
Memory



Contacts
Browse
Create
Groups
Memory status
My Numbers
Hotkey dial
My Contacts



Calendar



Key Guard



Messages
Create
Inbox
Outbox
Archive
User Messages
Memory status
Settings
Cell Broadcast



**Phone Menu
(or STK)***
Call Service
Call Diverts
Security
Network



Application
Clock
Calculator
Currency
Melody composer
(Phone Menu)*



Records
Last dialled
Answered
Unanswered
Delete all

*STK(SIM Tool Kit) is SIM dependent.

My Phone Menu

My Phone



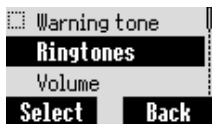
Sounds	Ringtones 30
	Volume 30
	Key tone 30
	Warning tone 31
Display	Wallpaper 31
	Greeting 31
	Animation 32
	Contrast 32
	Backlight 32
Language	T9 Input 33
	Display Languages 33
Alerts	Ring only 33
	None 33
	Ring & Vibrate 33
	Vibrate only 33
	Ring once 33
Profiles	Normal 34
	Quiet 34
	Outdoor 34
	Headset 34
Auto answer 36
Any key answer 36
Defaults 36

Sounds

Ringtones

You can change the ringtones for specific events such as incoming calls, messages, or alarms. To customise the ringtone, select the event first, then modify the ringtone.

From **My Phone**



1. **Sounds** (Select)
2. **Ringtones** (Select)
3. **Any call, Group calls, Alarm or Messages** (Select)
4. **Predefine, Compose or Download** (OK)
5. required ringtone (Select)

NOTE: The function in step 4 is country and operator dependent.

Volume

From **My Phone**



1. **Sounds** (Select)
2. **Volume** (Select)
3. Adjust the volume level (OK)

Key tone

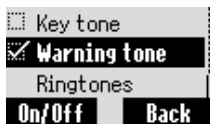
From **My Phone**

1. **Sounds** (Select)
2. **Key tone** (On/Off)

Warning tone

The warning tone informs you of low battery.

From **My Phone**



1.  **Sounds**  (Select)
2.  **Warning tone**  (On/Off)










Display

Wallpaper

You can change the wallpaper on the idle display. Idle mode can also change to the clock.

From **My Phone**



1.  **Display**  (Select)
2.  Wallpaper  (Select)
3.  **Predefine** or **Download**  (Select)
4.  required wallpaper  (Select)
5.  (On/Off)







NOTE: The function in step 3 is country and operator dependent.

Greeting

You can create a greeting message that is displayed each time the phone is switched on.

From **My Phone**



1.  **Display**  (Select)
2.  **Greeting**  (Edit)
3. Enter the greeting  (OK)
4.  (On/Off)

Animation

You can change the animation on the display when the phone is powered up.

From **My Phone**

1. ⌂ **Display** (Select)
2. ⌂ **Animation** (Select)
3. ⌂ required animation (Select)

Contrast

You can adjust the contrast of the display.

From **My Phone**

1. ⌂ **Display** (Select)
2. ⌂ **Contrast** (Select)
3. ⌂ Adjust the contrast (OK)



Backlight

You can select the backlight On/Off.

From **My Phone**

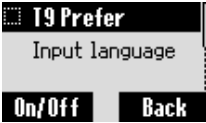
1. ⌂ **Display** (Select)
2. ⌂ **Backlight** (On/Off)

Language

T9 Input

When you create text, this function dramatically reduces the number of key presses.

From **My Phone**



1. **Language** (Select)
2. **T9 Input** (Select)
3. required input type (On/Off)

Display languages

It is possible to change the display language on your phone.

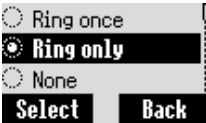
From **My Phone**

1. **Language** (Select)
2. **Display languages** (Select)
3. required language (Select)

Alerts

You can set your phone to ring and/or vibrate when you receive a call or message.

From **My Phone**



1. **Alerts** (Select)
2. required alert (Select)

The following options are available when a call is received:

- **Ring only**
- **None**
- **Ring & Vibrate**
- **Vibrate only**
- **Ring once**

Profiles

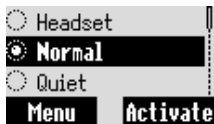
Activating a profile

You can switch between four profiles in your phone, each with a distinct combination of alert method, ringtone, etc. Profiles are set up for use in different environments.

From **My Phone**

1. **Profiles** (Select)
2. required profile (Menu)
3. **Activate** (Select)

You can set up the following different profiles.



Normal	Suitable for everyday settings
Quiet	With a ringtone, appropriate for formal occasions
Outdoor	Suitable when in noisy environments
Headset	Appropriate with vibrator when it is difficult to hear the ringtone

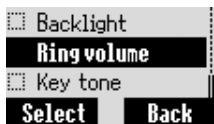
Setting a profile

You can customise a profile by changing the ring volume, key tone, warning tone, vibrator, and/or backlight.

Ring volume:

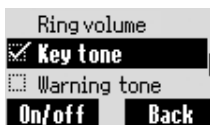
From **My Phone**









1. **Profiles** (Select)
2. required profile (Menu)
3. **Change settings** (Select)
4. **Ring volume** (Select)
5. Adjust the volume level (OK)



Key tone:

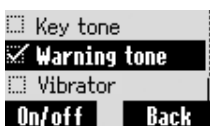
From **My Phone**



1.  **Profiles**  (Select)
2.  required profile  (Menu)
3.  **Change settings**  (Select)
4.  **Key tone**  (On/Off)

Warning tone:

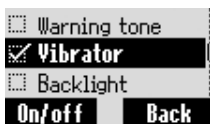
From **My Phone**











1.  **Profiles**  (Select)
2.  required profile  (Menu)
3.  **Change settings**  (Select)
4.  **Warning tone**  (On/Off)

Vibrator:

From **My Phone**



1.  **Profiles**  (Select)
2.  required profile  (Menu)
3.  **Change settings**  (Select)
4.  **Vibrator**  (On/Off)

Backlight:

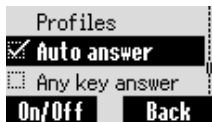
From **My Phone**



1.  **Profiles**  (Select)
2.  required profile  (Menu)
3.  **Change settings**  (Select)
4.  **Backlight**  (On/Off)

Auto answer

Auto answer can be set. To use this function, the personal hands free earpiece needs to be connected to the phone.

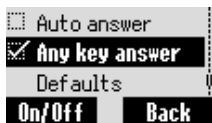


From **My Phone**

Auto answer (On/Off)

Any key answer

Calls can be answered by pressing any key (except).



From **My Phone**

Any key answer (On/Off)

Defaults

All personal settings are returned to their factory default settings.

From **My Phone**

1. **Defaults** (Select)
2. **"Restore factory settings?"** (Yes) or (No)

Games Menu

Games



Hit Mouse 37

Memory 39

Selecting games

From **Games** menu

 **Hit Mouse** or **Memory**  (Select).

NOTE: Once the power is switched off, High scores or Best scores may be lost.

Hit Mouse



When you see the mouse, press any button from 1 to 9 as quickly as possible to hit it. Keep in mind that the cat is not your target.

Example: If you press 5, you will hit the object hidden in the 5th hole. This game will end automatically and you will be given a score. This score might be the highest one! Good luck!






Key operation:

Press  ~ .






Starting games:

Select New by pressing  (New).




To change settings:

1.  (Menu)
2.  **Change settings**  (Select)
3.  required setting  (On/Off)




To start the game on a level of your choice:

1.  (Menu)
2.  **Level**  (Select)
3.  required level  (Select)

To see the top score:

1.  (Menu)
2.  **Top score**  (Select)

To see the instructions:

1.  (Menu)
2.  **Instructions**  (Select)



Memory

Match cards to find pairs with as few tries as you can, and make all cards visible. You can press keys 2, 4, 6, and 8 to move the cursor as you wish, and key 5 to select cards. When all cards are visible, you can get a score or maybe top score. Good luck!






Key operation:

Press **2** abc, **4** ghi, **5** jkl, **6** mno, **8** tuv.






Starting Games:

Select New by pressing  (New).




To change settings:

1.  (Menu)
2.  **Change settings**  (Select)
3.  required setting  (On/Off)




To start the game on a level of your choice:

1.  (Menu)
2.  **Level**  (Select)
3.  required level  (Select)

To see the top score:

1.  (Menu)
2.  **Top score**  (Select)

To see the instructions:

1.  (Menu)
2.  **Instructions**  (Select)

Contacts Menu

Contacts



Browse	SIM41 Phone41
Create	SIM 41 Phone 42
Groups	Friends45 Colleagues45 Family45 Others45 VIP45
Memory status46
My Numbers46
Hotkey dial47
My Contacts	SIM47 Phone47

Browse

Viewing the Contacts list in your SIM/Phone

You can search for an entry in the Contacts list.

From **Contacts**

1. **Browse** > **SIM** or **Phone** (Select)
 2. required contact entry (Menu)
 3. **View** (Select)
- If you press a letter key in step 2, you can jump to the first entry starting with the letter.

Create

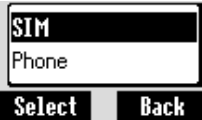
Creating a Contacts list in SIM

Phone numbers can be stored in your SIM.

You can store names, phone numbers, locations and record numbers in the SIM.

From **Contacts**

1. **Create** (Select)
2. **SIM** (Select)
3. Enter the name
4. Enter the phone number
5. (Save)
6. **“Saved in SIM”** is displayed



NOTE: The length and amount of data are SIM dependent.

Creating a Contacts list in Phone

You can store name, phone numbers, groups and melodies in your phone.

From **Contacts**

1. **Create** (Select)
 2. **Phone** (Select)
 3. Enter the name
 4. Enter the phone number
 5. (Set) required group (Select)
 6. (Set) required melody (Select)
 7. When entries are completed, (Save)
 8. **"Saved in Phone"** is displayed.
- The entries are grouped together and are retained even if you damage your SIM.

Storing a fixed dial number in FDN

The Fixed dial feature allows you to limit your outgoing calls to a certain set of numbers saved in FDN, which is located in your SIM. When this function is on, only the Fixed dial numbers can be dialled, and any attempt to call any other numbers will fail.

To activate this function, you need to set Fixed Dial on. See page 71.

From **Contacts**

1. **Create** (Select)
 2. **SIM** (Select)
 3. Enter the name
 4. Enter the phone number
 5. (Set) **FDN** (Select)
 6. (Save)
 7. Enter PIN2 code > (OK)
 8. **"Saved in SIM"** is displayed.
- To store a Fixed dial number, you need to enter your PIN2 code.



Options

Edit:

You can edit the selected Contacts entry.

From **Contacts**



1. **Browse > SIM or Phone** (Select)
2. required phone number or name (Menu)
3. **Edit** (Select)
4. (Save)

Delete:

You can delete the selected Contacts entry.

From **Contacts**

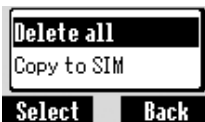


1. **Browse > SIM or Phone** (Select)
2. required phone number or name (Menu)
3. **Delete** (Select)
4. "Delete this contact entry ?" (Yes) or (No)

Delete all:

You can delete all the Contacts entries.

From **Contacts**

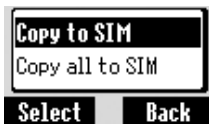


1. **Browse > SIM or Phone** (Select)
2. required phone number or name (Menu)
3. **Delete all** (Select)
4. "Delete all entries ?" (Yes) or (No)

Copy to Phone/SIM:

You can copy the selected Contacts entry to the phone or your SIM.

From **Contacts**



1. ⌕ **Browse > SIM or Phone** (Select)
2. ⌕ required phone number or name (Menu)
3. ⌕ **Copy to Phone/SIM** (Select)
4. “Copy entry to Phone/SIM ?” (Yes) or (No)

Copy all to Phone/SIM:

You can copy all the Contacts entries to the phone or SIM.

From **Contacts**



1. ⌕ **Browse > SIM or Phone** (Select)
2. ⌕ required phone number or name (Menu)
3. ⌕ **Copy all to Phone/SIM** (Select)
4. “Copy all entries to Phone/SIM ?” (Yes) or (No)

Search:

You can search for a name in the Contacts list.

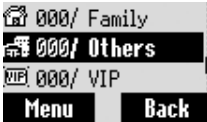
From **Contacts**

1. ⌕ **Browse > SIM or Phone** (Select)
2. ⌕ (Menu)
3. ⌕ **Search** (Select)
4. Enter the first letter of the required name (Select)

Groups

You can categorise the items stored in your phone into 5 groups: Friends, Colleagues, Family, Others and VIP. You can select a particular ringtone for each group to identify the incoming call.

From **Contacts**




1.  **Groups**  (Select)
2.  required Group  (Menu)

The following options are available :

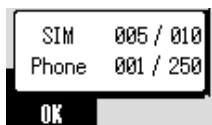
View	View the Contacts entries in the selected group
Set ringtone	Set the required ringtone
Remove entries	Delete all the Contacts entries in the selected group

If there is no entry stored in the selected group, "**List empty**" is displayed.

The following options are available by pressing  (Menu) after you select an entry from the selected group:

View	View the selected Contacts entry
Edit	Edit the selected Contacts entry
Delete	Delete the selected Contacts entry
Search	Search for a desired item in the selected group by entering the name.

Memory status



Memory status shows how many locations are available in the Contacts list.

Maximum memory capacity:

- **Phone 250 locations**
- **SIM (SIM dependent)**

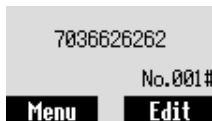
From **Contacts**

☰ **Memory status** (Select)

My Numbers

My Numbers is a handy phonebook where names and phone numbers can be stored and viewed.

From **Contacts**



1. ☰ **My Numbers** (Select)
2. ☰ required entry (Menu)
3. ☰ **Edit** (Select)
4. Enter your phone number ☰
5. Enter your name (Save)

The following options are available by pressing (Menu) after you select the required entry:

View	View the selected My Numbers entry
Edit	Edit the selected My Numbers entry
Delete	Delete the selected My Numbers entry

Hotkey dial

Setting Hotkey dial



You can quickly dial phone numbers stored at locations 001 - 009 in the Contacts list.

From **Contacts**

⊖ **Hotkey dial** (On/Off)

NOTE: This function is SIM dependent.

Making a call by using Hotkey dial

From idle mode

1. Press and hold a numeric key (1 ~ 9*)
2. Press

My Contacts

You can select SIM or Phone so that the Contacts list directly accessed from idle mode is set to the SIM or Phone Contacts list.

From **Contacts**



1. ⊖ **My Contacts** (Select)

2. ⊖ **SIM or Phone** (Select)

Calendar Menu

Calendar














New event

You can organise your Calendar to remind you of a personal event, such as a holiday period or birthday.

You need to set the clock, day and time before entering anything in the Calendar.

From **Calendar**



1.  to select Week or Month format
2. To select a day, press numeric keys 2, 8, 4 and 6 to move the cursor \uparrow , \downarrow , \leftarrow and \rightarrow respectively, to set the desired day.  (Agenda)
3. **<New entry>**  (Select)
4.  (Set) to select a type of event from **Memo** and **Meeting**  (Select)
5.  to enter Description
6.  to enter Start date
7.  to enter Start time
8.  to enter End date
9.  to enter End time  (Save).

Ensure that Calendar settings will not contravene any regulations by switching on automatically when in an aircraft, medical facility, etc. – (see “Operating Instructions Part 2”.)

View event



From Calendar

1. to select Week or Month format
2. When Month format is selected:
 Select a day by using the numeric keys (, , 2, 4, 6 and 8) (Agenda)
 When Week format is selected:
 Schedule icon(s) will be shown corresponding to a period of time selected by pressing .
 (Period of time : 4=0:00-3:59, 8=4:00-7:59, 12=8:00-11:59, 16=12:00-15:59, 20=16:00-19:59, 24=20:00-23:59)
 Select a day by using the numeric keys (2,4,6 and 8) (Agenda)
3. required schedule (Menu)
4. **View** (Select)
5. To return to the previous display, (OK)
 To edit (Edit), edit the required information (Save).

<Example>

Agenda: 2004/02/10 Start 0:00~End 3:00

Scheduled day

Scheduled time period

Schedule icon

- 4** = 0:00~ 3:59
- 8** = 4:00~ 7:59
- 12** = 8:00~11:59
- 16** = 12:00~15:59
- 20** = 16:00~19:59
- 24** = 20:00~23:59

* Press to change the schedule icon into different periods of time.



Key Guard Menu


Key Guard



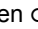


The Key Guard function is used to prevent any keys from being accidentally pressed, e.g. when the phone is being carried.

From **Key Guard**

1.  (Yes) or  (No)

- When Key Guard is enabled,  appears on the display.
- Emergency calls are still possible.
- When a call is received, Key Guard will be disabled temporarily, and you can answer the call

NOTE: When making emergency calls with the “Key Guard” enabled, there will be no visual indication that the number is being dialled.

When  appears on the display,  (Free) > **“Press ok to free keypad”**  (OK) .

Messages Menu

Messages



Create	52
Inbox	55
Outbox	56
Archive	Inbox 57 Outbox 57
User Messages	58
Memory status	58
Settings	Message centre 59 Protocol 59 Validity period 60 Delivery report 60
Cell Broadcast	Topic list 61 Read Messages 61 Languages 62 Auto display 62

Create

Message centre

It is possible to receive, display, edit and/or send text messages of up to 1520 characters in 10 messages (depending on the language), to the network that has a roaming agreement (depending on the recipient's phone options). Before sending a message, you need to enter the Message centre number into Settings.

From **Messages**



1.  **Settings > Message centre**  (Select)
 2. Enter the message centre number in the international dial format (see “International dialling” on page 16)
-  (OK)

NOTE: Your network operator may have pre-programmed this number. Do not change this number as it may cause the failure of SMS Messaging.

Creating a message

From Messages



1. **Create** (Select)
2. Create your text message – max. 1520 characters (see “Text entry” on page 24) (Menu)
3. **Send** (Select)
4. Enter the destination phone number (OK)
OR
Recall a number from **Contacts** (Names) >
(required name) (Select) > (OK)

When you create a text, these options are available by pressing (Menu):

Send	Send text as a Short Text message
Save	Save text in the Outbox in your SIM
Save and send	Save text in the Outbox in your SIM and send it
Picture & sound	Add a picture and/or sound to the text. See page 54.
User Messages	Use a short message stored in the phone For editing the User Message, see “User Messages” on page 58.

➤ You can switch T9® mode On/Off by pressing (#*).








EMS (Enhanced Message Service)

You can add a picture and sound to an SMS.

Picture:

From **Messages**











1.  **Create**  (Select)
2. Create your text message  (Menu)
3.  **Picture & sound**  (Select)
4.  required picture  (Select)

Sound

From **Messages**



1.  **Create**  (Select)
2. Create your text message  (Menu)
3.  **Picture & sound**  (Select)
4.  (Sound)
5.  required sound  (Select)

Inbox

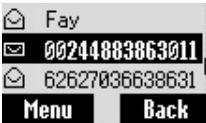
Viewing a received message

When a Short Text Message is received, the message indicator will flash on the display and a user preset audible alert will sound. If you are on a call you will be alerted by the vibrator.

✉ flashes when an unread message is received in the Inbox. When the Inbox is full, ✉ will remain until old messages are deleted.

From Messages

1. ☺ **Inbox** ☺ (Select)
2. ☺ required message ☺ (Menu)
3. ☺ **View** ☺ (Select)



NOTE: If the message indicator is displayed constantly (does not flash), this means that the message area is full, and you need to delete old messages in order to receive new messages.

When reading messages, the following options are available by pressing ☺ (Menu):

Delete	Delete a message
Reply	Create an SMS reply
Forward	Forward a message to another phone
Edit	Edit a message and save and/or send it to somebody else
Delete all	Delete all messages in Inbox
Extract Number	Extract numbers in messages and save in Contacts
Move to Archive	Move a message to Archive Inbox

Outbox

Viewing a sent message

A list of sent messages is stored in your SIM. You can select a message from the list and view it.

From Messages

JJaques
2004.02.26 11:25
62627036638631
Menu **Back**

1. **Outbox** (Select)
2. required message (Menu)
3. **View** (Select)

While you are reading a message, the following options are available by pressing (Menu):

Delete	Delete a message
Edit	Edit a message and save and/or send it to somebody else
Send	Send an SMS message after entering a recipient number
Delete all	Delete all messages in Outbox
Extract Number	Extract numbers in messages and save in Contacts
Move to Archive	Move a message to Archive Outbox

Archive

Viewing a stored message

To view the list of messages which are stored in Archive.

- **Inbox:** When a message saved in the Inbox is moved into Archive, the message will be saved in the Archive Inbox.
- **Outbox:** When a message saved in the Outbox is moved into Archive, the message will be saved in the Archive Outbox.

From Messages



1. **Archive** (Select)
2. **Inbox or Outbox** (Select)
3. required message (Menu)
4. **View** (Select)

When reading a message, the following options are available by pressing (Menu):








Send (Outbox)	Send a message to another phone
Edit	Edit a message and save and/or send it to somebody else
Delete	Delete a message
Forward (Inbox)	Forward a message to another phone
Delete all	Delete all messages in Archive Inbox/Outbox

User Messages

You can edit the preset User Messages, then save them for later use

From **Messages**



1.  **User Messages**  (Select)
2.  required message  (Select)
3. Edit the message  (Menu)
4.  **Save and send** or **Save**  (Select)

NOTE: If the text is wider than the screen display, the text will scroll.

Memory status

Memory status shows how many locations are left to store messages in the Inbox.

From **Messages**



 **Memory status**  (Select)

The maximum memory capacity:

- **SIM (SIM dependent – max. 100 locations)**
- **Phone 50 locations**
- **Archive 50 locations**

Settings

Message centre

Before sending any messages, you need to enter your Message centre number. This number is provided by your service provider.

From **Messages**

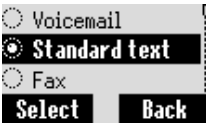


1. **Settings** (Select)
2. **Message centre** (Select)
3. Enter your Message centre number

Protocol

The Message centre is able to convert your message to the format specified by the selected protocol.

From **Messages**

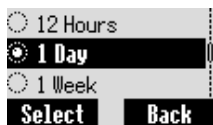


1. **Settings** (Select)
2. **Protocol** (Set)
3. Select required setting from **Standard text, Fax, X.400, Paging, E-mail, ERMES, or Voicemail** (Select)

Validity period

You can set the duration that your message is stored at the Message centre.

From **Messages**



1. ⌂ **Settings** (Select)
2. ⌂ **Validity period** (Set)
3. ⌂ Select required setting from **Maximum, 1 Hour, 12 Hours, 1 Day, or 1 Week** (Select)

Delivery report

You can request a delivery report regarding the status of a sent message.

From **Messages**



1. ⌂ **Settings** (Select)
2. ⌂ **Delivery report** (On/Off)

Cell Broadcast

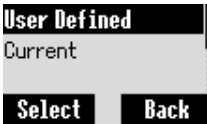
Topic list

You can receive your favourite information regularly from your service provider.

You need to specify the “topic(s)” of information and the language in which you wish to receive this information.

To receive the broadcasts, “Cell Broadcast” must be on.

From **Messages**



1. **Cell Broadcast > Topic list > Current** (Select)
2. **< Add topic >** (Select)
OR
 > (Menu) **>** **Add** (Select)
3. required Topic (Select)

User defined topic

From **Messages**



1. **Cell Broadcast > Topic list > User defined > <New entry>** (Select)
2. Enter msg ID (OK)
3. Enter the name (OK)
4. **Current** (Select)
5. **< Add topic >** (Select)
6. required Topic (Select)

Reading a message

From **Messages**



1. **Cell Broadcast** (Select)
2. **Read Messages** (Select)
3. (Next) to select the required topic

NOTE: This function will depend on your network service operator.

Language

You can set the language of the message you receive.

From **Messages**



1. **Cell Broadcast** (Select)
 2. **Language** (Select)
 3. required language above which you wish to insert a new language (Select)
 4. **Insert** (Select)
 5. required language (Select)
- The added language is displayed above the language you selected in step 3.
 - If you wish to add a new language to the end of the list, select "Add to end" in step 4.
 - To resume a language, select "Delete" in step 4.

Auto display

In idle mode, the latest Info Message is displayed on your phone automatically.

From **Messages**



1. **Cell Broadcast** (Select)
2. **Auto display** (On/Off)

Phone Menu

Phone Menu (or STK)*



Call Service

Time/Charges	64
Call waiting	64
Withhold ID	65
Caller's ID	65
Charge settings	66

Call Diverts

All voice calls	68
Not reachable	68
No reply	68
Busy	68
Status check	68
Cancel all	68

Security

Call bar	69
Codes	70
Fixed dial	71
SIM lock	72

Network

Auto network	72
New network	72
Network list	72
Band	72



*STK (SIM Tool Kit) is SIM dependent.

NOTE: If SIM card provides SIM Tool Kit services (STK), this menu will become the STK Menu. You can still access Phone Menu from Application.

Call Service

Viewing time/charges

From **Phone Menu**

1. **Call Service** > **Time/Charges** (Select)
2. **Last call, All voice calls** or **Cost left** (Select)



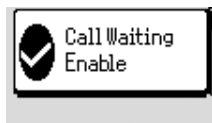
Last call	Display the duration of last call
All voice calls	Display the total duration for all voice calls
Cost left	If Max cost is on, display the remaining units. For setting the Max cost, see page 67.

Call waiting

If Call waiting is switched on, a second call can be received. Turn this function on before making a multiparty (conference) call.

From **Phone Menu**

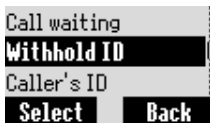
1. **Call Service** > **Call waiting** (Select)
2. **Set, Clear** or **Check status** (Select)



Withhold ID

Withhold ID allows you to prevent showing your name and/or number to the calling party.

From **Phone Menu**



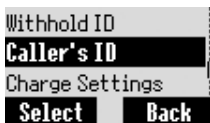
1.  **Call Service**  (Select)
2.  **Withhold ID**  (Select)

NOTE: When checking the status, the phone must be registered to a network.

Caller's ID

Caller's ID allows you to display the Caller's name and/or number on your display.

From **Phone Menu**



1.  **Call Service**  (Select)
2.  **Caller's ID**  (Select)

NOTE: When checking the status, the phone must be registered to a network.

Charge settings








NOTE: The duration of one unit may vary between peak and off-peak times. Call charges can be calculated accordingly. However, the actual tariffs charged by your service provider may not be reflected in the calculation.

Currency:

Firstly, Personal rate must be entered. This is the cost that the service provider charges for one unit of call time. See "Personal rate" below.

From **Phone Menu**

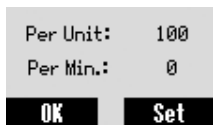







1.  **Call Service > Charge settings**  (Select)
2.  **Currency**  (Select)
 > Current setting is displayed
3.  (Set) > Enter PIN2 code  (OK)
4. Enter currency units (max. 3 characters)  (OK)

NOTE: This function is SIM dependent

Personal rate:

From **Phone Menu**



1.  **Call Service > Charge settings > Personal rate**  (Select)
2.  (Set)
3. Enter PIN2 code  (OK)
4. Enter your personal rate  (OK)

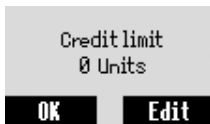
NOTE: When you set the unit price, you are asked to enter your PIN2.

NOTE: This function is SIM dependent

Maximum cost:

You can set the maximum cost of calls allowed.

From **Phone Menu**



1. **Call Service** > **Charge settings** (Select)
2. **Max cost** (Set)
> Current setting is displayed.
3. (Edit) > Enter PIN2 code (OK)
4. (Set) > **On** (Select)
5. Enter Credit limit > (OK)

NOTE: This function is SIM dependent

Auto display:

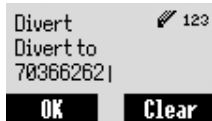
In idle mode, the cost of the latest Incoming call is displayed on your phone automatically.

From **Phone Menu**



1. **Call Service** > **Charge settings** (Select)
2. **Auto display** (On/Off)

Call Diverts



From Phone Menu

1. **Call Diverts** (Select)
2. Select the circumstances to initiate the divert (Select)
3. **Set, Clear, or Check status** (Select)
4. Enter the phone number to divert to
 - Enter the voice mail centre number if you wish incoming voice calls to be diverted to the voice mail centre.
 - When a divert situation is enabled, the divert icon () is displayed.
 - When updating or checking the status of Call Divert, the phone must be registered to a network. ()

All voice calls	Divert all incoming voice calls
Not reachable	When you are not in a coverage area, divert incoming voice calls
No reply	If you do not answer the phone, divert incoming voice calls
Busy	When a call is in progress, divert incoming voice calls
Status check	Check the current Call Diverts status
Cancel all	Cancel all Call Diverts settings

- Voice calls can be diverted to voicemail box or to a number that you specify.

Security

Call bar

Call barring restricts certain outgoing and/or incoming calls using a password supplied by your service provider. When updating/checking the status of Call bar, the phone must be registered to a network.

From Phone Menu



1. **Security > Call bar** (Select)
2. required setting from the table shown below (Set) or (Select)
3. required operation from **Set, Clear or Check status** (Select)
4. Enter required password (Select)

All outgoing	All outgoing calls are barred
Outgo int'l.	International outgoing calls are barred
Out. int'l. x home	International outgoing calls except to your home country are barred
All incoming	All incoming calls are barred
When roaming	All international incoming calls when roaming outside the home PLMN are barred
Status check	Call bar status is displayed
Cancel all	Cancel all Call bar settings
Password	Change Call bar password

Codes

Change phonecode:

The Phonecode is used for the SIM lock, which protects the phone from being used with a SIM other than yours.

From **Phone Menu**

1. **Security > Codes** (Select)
2. **Change phonecode** (Select)
3. Enter a new phonecode (OK)
4. Enter the new phonecode to verify (OK)

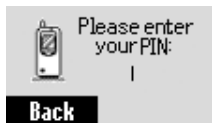
NOTE: Your phonecode must be 4 to 8 digits. You are advised to write down your phonecode. If the phonecode is entered incorrectly 3 times, the phone will cease to operate permanently. If you change the phonecode from the second time on, you must enter the previous phonecode first, then enter the new phonecode twice.

PIN control:

The PIN protects your SIM against unauthorised use. If you enable the PIN, every time the phone is switched on you will be prompted to enter the PIN.

From **Phone Menu**

1. **Security > Codes** (Select)
2. **PIN Control**
3. Enter PIN number (OK)
4. Set to either enable or disable the PIN (Set).
5. (OK)



Changing PIN/PIN2:

From **Phone Menu**



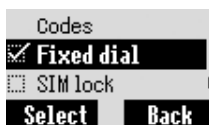
1. **Security > Codes** (Select)
2. **Change PIN or Change PIN2** (Select)
3. Enter the current code (OK)
4. Enter the new code (OK)
5. Enter the new code to verify (OK)

NOTE: To enter the PUK code for your PIN, enter ****05#**. You will then be prompted to enter the PUK code. Follow the on-screen instructions. To enter the PUK2 code for PIN2, enter ****052#**. You will then be prompted to enter the PUK2 code. Follow the on-screen instructions. If the PUK/PUK2 code is entered incorrectly 10 times, the phone will cease to operate permanently. All information stored in the SIM will be lost and the SIM will need to be replaced. Contact the service provider for more details.

Fixed dial:

The Fixed dial feature allows you to limit your outgoing calls to a certain set of numbers saved in FDN, which is located in your SIM. When this function is on, only the Fixed dial numbers can be dialed, and any attempt to call any other number will fail.

From **Phone Menu**



1. **Security** (Select)
2. **Fixed dial** (Select)
3. Enter PIN2 code (OK)
4. (Set)
5. (OK)








- When Fixed dial is on, any manually dialed phone numbers must be the same as the numbers in the Fixed Dial Store, otherwise the call cannot be made.
- A phone number may be stored, edited or deleted. You will be prompted for your PIN2 code.

SIM lock:

Once you enable the SIM lock, you will be prompted to enter your phonecode when you switch on the phone with a different SIM inserted.

From **Phone Menu**



1.  **Security**  (Select)
2.  **SIM lock**  (Select)
3. Enter phonecode  (OK)
4.  (Set) to set the SIM lock on/off
5.  (OK)

NOTE: Your phonecode must be 4 to 8 digits. You are advised to write down your phonecode. If the phonecode is entered incorrectly 3 times, the phone will cease to operate permanently.






Network

Setting:

From **Phone Menu**

You can select a network that is available in your current location.



1.  **Network**  (Select)
2.  Select one of the settings below  (On/Off) or  (Select)

Auto network	Set Auto network on or off.
New network	When Auto Network is on, search an available network automatically. When Auto network is off, you must select a network manually.
Network list	Create and edit a network list according to your preferences.
Band	Choose a network band: 900/1800, 900/1900, 900, 1800, 1900 MHz.

NOTE: This function is SIM dependent

Application Menu

Application



Clock	Settings	74
	Alarm	75
	Power off time	76
Calculator	76
Currency	77
Melody composer	78
(Phone Menu)	79

Clock

Settings

Time zone:

From **Application**



1. ⌂ **Clock > Settings > Time zone** (Select)
2. ⌂ required region (Select)
3. **“Daylight saving?”** (Yes) or (No)
4. **“Set this zone to local”** (OK)
5. **“Success!”** (OK)

Time & date:

From **Application**



1. ⌂ **Clock > Settings > Time & date** (Select)
2. (Set) (to enter the date and the time) (OK)

Date format:

You can select the desired display format for the time and date.

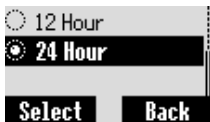
From **Application**



1. ⌂ **Clock > Settings > Date format** (Set)
2. ⌂ required format (Select)

Time format:

From **Application**



1. **Clock > Settings > Time format** (Set)
2. required format (Select)

Display time:

You can show the time and date on the display in idle mode.

From **Application**

1. **Clock > Settings** (Select)
2. **Display time** (On/Off)

Alarm:

From **Application**



1. **Clock > Alarm** (Set)
2. (Set) > Enter the time (24 hour clock) (OK)
3. **Repeat daily, Once or Disabled** (Select)
4. **"Alarm time has been updated!"** (OK)

➤ The alarm set indicator appears on the idle display.

➤ When the set time is reached, the alarm will sound.

If you are on a call, the phone will vibrate without sound.

To stop the alarm:

Press any key or (Off)

OR

(Pause) to pause the alarm and start again after 5 minutes

NOTE: Even if the phone is switched off, when the Alarm is set on, the phone will switch on automatically and start the alarm.

Power off time

The phone can be set to turn itself off automatically at a specified time using the Power off feature.

From **Application**

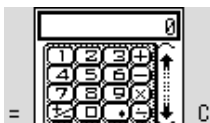


1. ☰ **Clock > Power off time** (Set)
2. Enter the time (24 hour clock) (OK)
3. ☰ **Repeat daily, Once or Disabled** (Select)
4. **“Power off time setting updated!”** (OK)

Calculator

You can use the 4 function calculator (addition, subtraction, multiplication and division) to make simple arithmetic calculations.

From **Application**



1. ☰ **Calculator** (Select)
2. Enter a number (max. 9 digits). It will be displayed on the upper right of the display. If a decimal point is required, press **#**, when a minus sign is needed press *****.
3. ☰ to select the arithmetic operation
4. Enter a number (max. 9 digits). It will be displayed next to the operation symbol.
If ☰ is used to select another arithmetical operation to perform, an intermediate calculation will be performed and the result will be displayed.
5. (=) to calculate

Currency

Rate setting

The currency convertor enables you to convert from/to a home currency using a conversion rate that you enter. Before beginning conversions, choose a base currency and enter the conversion rate. The base currency rate is set to 1.

From Application



1. **Currency** (Select)
2. **Rate setting** (Select)
3. Enter the conversion rate next to the pencil icon (OK)
4. (Save)
 - You can change the base currency by pressing
 - If a decimal point is required, press

Rate computing

From Application

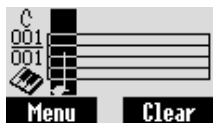


1. **Currency** (Select)
2. **Rate computing** (Select)
3. Enter the amount of your currency to convert into the other currency (Convert)
 - You can change the base currency by pressing
 - If a decimal point is required, press

Melody composer

Composing a melody

From **Application**



1. **Melody composer** (Select)
2. required My Music (Select)
3. **Melody edit** (Select)
4. required track (Select)
5. Compose your melody - See the notes chart below
 (Menu)
6. **Save** (Select)

Using the following table as a reference, enter notes (from the choice of low, middle and high), rests, and duration of each, to generate your composition. Main Track and Sub Tracks are played together when you play the composed music.

Key						
Func	C	D	E	F	G	A
Key						
Func	B	Repeat	Dotted note	Rest	Duration	Low, Low #, Middle, Middle #, High, High #

Play


To play the composed melody before saving:

- (Menu) > **Play** (Select)

Tempo

Before you save the composed melody, you can change the tempo, and/or the instrument to play the melody.

To arrange the tempo of the composed melody:

1.  (Menu) >  **Tempo**  (Select)
2.  required tempo  (Select)

Select instrument

You can select the instrument to play the composed melody:

 (Menu) >  **Select instrument**  (Select)

Phone menu

This menu is available under the Application Menu if your SIM card provides STK services.

To use this menu, see “Phone Menu” on page 63.

Records Menu

Records



Last dialled 80

Answered 80

Unanswered 80

Delete all 81


Last dialled/Answered/Unanswered number

Recently dialled phone numbers will be stored in Last dialled. (max. 50)


If an incoming call with Caller's ID is answered, the number will be stored in Answered (max. 50).

If an incoming call with Caller's ID is not answered, the number will be stored in Unanswered (max 20).

From **Records**

1. ☰ Choose one menu from **Last dialled**, **Answered** or **Unanswered**  (Select)

OR

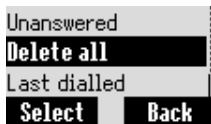
In idle mode,  to view the last dialled numbers directly

2. ☰ required phone number (or name) you wish to redial



Delete all

From **Records**



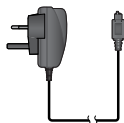
1. **Delete all** (Select)
2. “Delete all calls?” (No) or (Yes)

Li-Ion Battery (EB-BSA10)



Double your talk time by having a spare battery.

Rapid Charger (EB-CAD55UK)



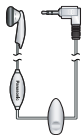
Carry a lightweight portable charger wherever you go to ensure you always have power to talk.

Rapid Charger (EB-CAD55EU)



Carry a lightweight portable charger wherever you go to ensure you always have power to talk.

Personal handsfree (EB-EMG70)



Talk and move while keeping your hands free, by using a personal handsfree. Put the ear piece in your ear and the adaptor in the side of the handset, and talk.


How to Identify a Genuine Panasonic Accessory

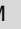
Panasonic produces some of the most advanced mobile phones available. So, as you'd expect from this class leader, the range of accessories are second to none. Most genuine Panasonic accessories will have a label showing an "EB-XXX00" model number.

NOTE: Accessories are subject to change without notice.

Troubleshooting

Should any problem persist, contact your dealer.

Problem	Cause	Remedy
Phone will not switch on.		Check that the battery is fully charged and correctly connected to the phone.
Extremely short battery life for a new battery.	The network you are using and the condition of the battery can affect battery life.	
Short battery life for an old battery.	The battery has worn out.	Replace with a new fully charged battery.
The charging indicator does not light, the battery level indicator does not appear and the phone cannot be switched on when charging.	The battery is not attached to the phone, or when the battery has been deeply discharged, the phone will take a short time until the indicator lights.	Leave the phone charging the battery for a few minutes before the indicator lights and your attempt to switch the phone on.
Battery fails to charge.	The battery is not attached to the phone.	Ensure the battery is fitted to the phone prior to commencing charging.
	Battery was connected to the phone after the Fast Travel Charger was switched on.	
	 indicates abnormal charging. Battery is defective or of the wrong type.	Replace with a new battery.
	Battery temperature exceeds the charging temperature range (too hot or too cold).	Use the battery at room temperature.

Problem	Cause	Remedy
Calls cannot be made.	The phone is locked.	Unlock the phone.
	Outgoing calls are barred.	Disable outgoing call barring or barred dialling.
	The phone is not registered to a network.	Move to a coverage area and operate your phone after it has registered with a network.
Calls cannot be made from Fixed Dial Store.		Check whether your SIM supports Fixed dial. Check if Fixed dial is switched on. Check whether the phone number is stored in Fixed Dial.
Calls cannot be received.	The phone is not switched on.	Switch the phone on.
	Incoming calls are barred.	Disable incoming call barring.
	The phone is not registered to a network.	Move to a coverage area and operate your phone after it has registered with a network.
Emergency calls cannot be made.	You are not in a GSM coverage area.	Check that the antenna symbol () is displayed – move to a coverage area and operate your phone when the antenna symbol is displayed.
Phone numbers cannot be recalled from Contacts list.	The phone is locked.	Unlock the phone.
	Phone number has been restricted.	Switch off restriction.

Important Error Messages

These are some of the most important error messages which may be displayed:

New codes not same	When you change your password, you must enter the new password twice to confirm. The two codes you entered are not the same. Enter the same code twice.
Password invalid	The password that you entered is not valid. Enter the correct password.
New PIN not accepted	Your new PIN code was not accepted. Please try again.
New PIN2 not accepted	Your new PIN2 code was not accepted. Please try again.
Incorrect entry!	You entered your PIN or PIN2 code incorrectly. Enter the code correctly.
Entries do not match!	When you change your password, you must enter the new password twice to confirm. The two codes you entered are not the same. Enter the same code twice.
Invalid password	The reply message from network when you activate call barring with the incorrect password. Enter the correct password.
Service not supported	The function you selected is not supported by your service provider. Please contact your service provider.
Insufficient space! Continue?	The SIM storage area is full. If you continue, data may be lost. Please delete old records.
Not enough space! Continue?	The message storage area is full. If you continue, data may be lost. Please delete old records.
Failure to authorize	Your SIM card is not registered with your service provider. Please contact your service provider.
Blocked	Your SIM card is blocked. Please contact your service provider.

Glossary of Terms

DTMF	Dual Tone Multi-Frequency tones allow you to communicate with computerised phone systems, voice mailboxes, etc.
FDN	Fixed Dial Number. Used to restrict outgoing calls to a certain set of numbers.
GSM	Global System for Mobile communications. The name given to the advanced digital technology that your phone uses.
Network Operator	The organisation responsible for operating a GSM network.
Password	Used for the control of Call Bar.
PIN	Personal Identification Number used for SIM security. Supplied by your service provider. If the PIN is entered incorrectly 3 times, the PIN will be blocked.
PIN2	Personal Identification Number used for the control of Fixed Dial Store and Call Charge metering. Supplied by your service provider. If the PIN2 is entered incorrectly 3 times, the PIN2 will be blocked.
PLMN	Public Land Mobile Network. A network that provides land mobile telecommunications services.
PUK/PUK2	PIN/PIN2 Unblocking Key. Used to unblock the PIN/PIN2 code. Supplied by your service provider. If the PUK/PUK2 is entered incorrectly 10 times, the PUK/PUK2 will be blocked.
Registration	The act of logging on to a GSM/GPRS network. This is usually performed automatically by your phone.
Roaming	The ability to use your phone on networks other than your home network.
Service Provider	The organisation responsible for providing access to the GSM/GPRS network.
SIM	Subscriber Identity Module. A small smart-card which stores unique subscriber and user-entered information such as Contacts entries and short messages. Supplied by your service provider.
SMS	Short Message Service. A basic mail system used for cellular phones. This service allows sending/receiving of short text messages.

Index

- A**
- Accessories 82
 - Li-Ion Battery 82
 - Personal handsfree 82
 - Rapid Charger 82
- Alarm 75
- Alerts 33
- Animation 32
- Answer 36
 - Any key answer 36
 - Auto answer 36
- Application Menu 73
- Archive 57
- Auto capital change 25
- B**
- Backlight 32
- Battery 1
 - Charging 5
 - Fitting and removing 1
- C**
- Calculator 76
- Calendar 48
 - Create 48
 - View 49
- Call
 - Answering a call 17
 - During a call 11
 - Ending 16
 - Incoming call while on a call 20
 - Making 15
 - Making a second call 19
 - Mute 17
 - Reject 17
- Call bar 69
- Call Diverts 68
- Call Service 64
- Call status 20
- Call transfer 20
- Call waiting 64
- Caller's ID 65
- Cell Broadcast 61
- Charge settings 66
 - Auto display 67
 - Viewing time/charges 64
- Clock 74
 - Date format 74
 - Display time 75
 - Power off time 76
 - Time & date 74
 - Time format 75
 - Time zone 74
- Conference call 20
- Contacts list 41
 - Copy 44
 - Creating in Phone 42
 - Creating in SIM 41
 - Delete 43
 - Edit 43
 - Search 44
 - Viewing 41
- Contacts Menu 40
- Contrast 32
- Currency 77
 - Rate computing 77
 - Rate setting 77
- D**
- Defaults 36
- Dialling 15
 - Last number dialling 15
- Display 12, 31
- Downloads
 - Ringtones 22
 - Wallpapers 22
- DTMF 21
- E**
- Emergency call 16
- EMS 54

F	
FDN	42
Fixed dial	71
G	
Games Menu	37
Glossary of Terms	86
Greeting	31
Groups	45
H	
Hit Mouse	37
Hotkey dial	47
I	
Idle display	12
Important Error Messages	85
Inbox	55
In-call operations	18
Hand held	18
Hands free	18
K	
Key functions	10
Key Guard	50
Key tone	30
L	
Language	33
Display Languages	33
M	
Maximum cost	67
Melody composer	78
Memory	39
Memory status	46, 58
Menu Display	27
Menu Structure	28
Message centre	52
Messages	51
Creating	53
Settings	59
Messages Menu	51
Multi tap mode	26
My Contacts	47
My Numbers	46
My Phone Menu	29
N	
Network	72
O	
Outbox	56
P	
Phone	15
Switching on/off	15
Phone Menu	63, 79
PIN control	70
PIN/PIN2	71
Profiles	34
R	
Records Menu	80
Ringtones	30
S	
Security	69
Shift mode change	25
SIM	4
Fitting and removing	4
SMS	52
Sounds	30
Status icons	13
Symbols	14
T	
T9® Input	33
T9® Text Input	25
Text entry	24
Text Input mode change	25
Troubleshooting	83
U	
User Messages	58

V

Volume 30

W

Wallpaper 31

Warning tone 31

Withhold ID 65

