



P2 HD 5-YEAR WARRANTY PROGRAM

(5-Year Warranty = 1 year Regular Warranty + 4 Year Extended Warranty)

Register Now: http://panasonic.biz/sav/pass_e

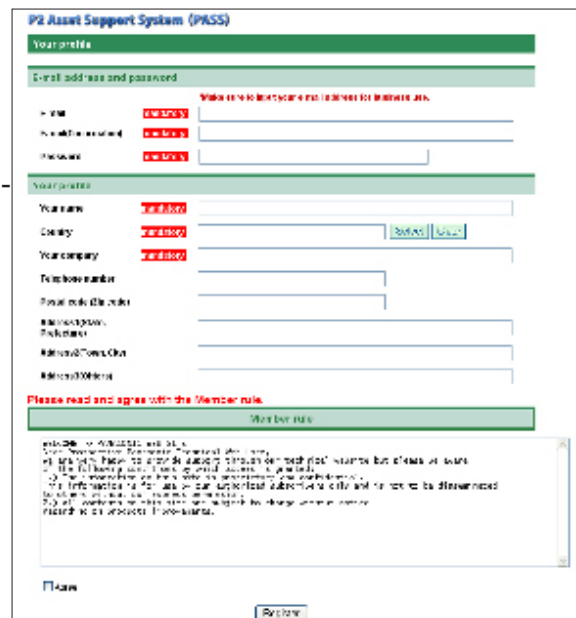
To qualify, you must register within 30 days from date of purchase.

REGISTRATION

To be eligible for the AVCCAM 5-Year Warranty Program, you simply register your P2 HD product at http://panasonic.biz/sav/pass_e and complete the on-line customer profile and product information requested. Once registered, you will receive registration confirmation via e-mail. In addition, you will also receive via e-mail the 4-year Extended Warranty* certificate from Panasonic Broadcast & Television Systems Company describing the coverage for your P2 HD product. You must register within 30 days of purchase.

BENEFITS

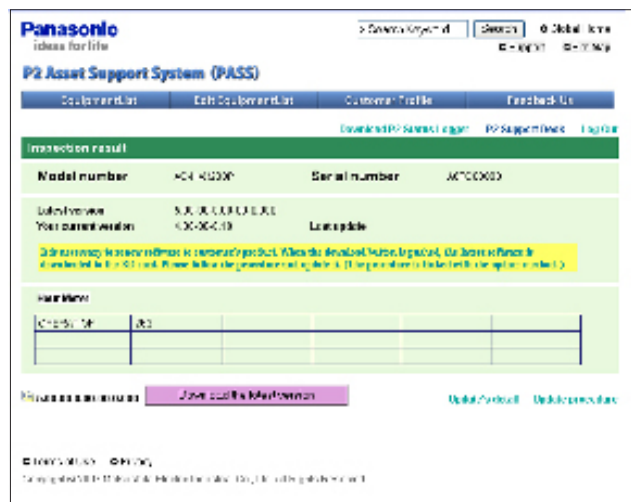
1. Receive FREE 4 year Extended Warranty
2. Identification of your P2HD current software levels and advisory of necessary software updates is easy by connecting your P2 HD product to your laptop or PC via USB 2.0 port and then connecting to http://panasonic.biz/sav/pass_e
3. Free Update Software can be downloaded to your PC and copied to your P2 HD via an SD Memory Card.
4. Manage all your P2 HD units using the Panasonic PASS (P2 Asset Support System)
5. Check hour meter and service history of each unit.



Current Applicable Models:

- AG-HPX500 full-size P2 HD Camcorder
- AJ-HPM100 P2 Mobile Recorder/Player
- AJ-HPX2000 full-size P2 HD Camcorder
- AJ-HPX3000 full-size P2 HD Camcorder
- AJ-HPG10 P2 Gear Player/Viewer/Recorder
- AJ-HPX170 HandHeld Camcorder
- AJ-HPX2700 full-size VFR P2 HD Camcorder
- AJ-HPX3700 full-size VFR P2 HD Camcorder
- AJ-HPM110 P2 Mobile Recorder/Player

Additional models may be added as they are introduced.



BENEFITS OF PASS (P2 ASSET SUPPORT SYSTEM)

Extended Limited Warranty, without additional charge, during years two through five, per the Terms and Conditions and Limitations and Exclusions below.

Identification of user's P2HD unit current software levels and advisory of necessary software updates by easily connecting P2 HD product to laptop or PC via USB 2.0 port and then accessing website http://panasonic.biz/sav/pass_e

Free Software Updates are available from Panasonic's designated website to be downloaded to PC and copied to P2 HD equipment via SD Memory Card.

Management of each registered P2 HD unit using the PASS.

Ability to check hour meter and service history of each registered unit.

TERMS AND CONDITIONS OF THE EXTENDED WARRANTY

Panasonic Broadcast & Television Systems Company (referred to as "the Warrantor") will repair this product with new or refurbished parts, free of charge in the USA in the event of a defect in materials or workmanship as follows:

Labor – Carry-in or mail-in service ONLY during the second through fifth years following the date of original purchase, or up to the number of operational hours as listed below **, whichever comes first.

Parts - Defective parts will be replaced with new or rebuilt parts within the same period of time as listed above. This extended warranty does not cover CCD block*, LCD panel, fan, handle, cases, viewfinder, VF mount, and consumable and cosmetic parts such as the ones made of rubber beyond regular warranty. This extended warranty does not cover accessories such as batteries, AC adapter, P2 cards, viewfinder or cables. Free Software Updates are available from Panasonic's designated website; and therefore installation of such updates is not covered by this extended warranty. This extended warranty does not provide for any loaner units during the period of the repair.

Carry-in or mail-in service in the USA may be obtained during the extended warranty period by contacting Panasonic Broadcast & Television Systems Company Factory Service Centers or by calling toll free 1-800-524-1448 to locate an Authorized Service Center. Customer is responsible for shipping charges both ways.

This extended warranty is non transferable and is extended only to the original purchaser purchasing unit from Panasonic Broadcast & Television Systems Company or one of its authorized resellers. Products originally sold in other countries, and imported into USA by third parties, are not covered by this extended warranty. Products not registered within 30 days of original purchase may not be covered by this extended warranty. Whenever the date of original purchase can not be satisfactorily determined, the date of manufacture will be considered as the warranty effective date. The Warrantor reserves the right to audit any claim and to nullify any claim that cannot be substantiated. A copy of a receipt or other proof of the date of original purchase may be required before warranty service is rendered.

This extended warranty only covers failures due to defects in materials or workmanship, which occur during normal use. This extended warranty does not cover damage which may occur in shipment, or failures which are caused by products not supplied by the Warrantor, or failures which result from accident, misuse, abuse, neglect, mishandling, misapplication, alteration, modification, faulty installation, set-up adjustments, maladjustment of consumer controls, improper operation, power line surge, improper voltage supply, lighting damage, or service performed by anyone other than a Panasonic P2HD authorized repair facility, or damage that is attributable to acts of God or force majeure.

LIMITATIONS AND EXCLUSIONS OF THE EXTENDED WARRANTY

There are no express warranties except as listed above.

THE WARRANTOR SHALL NOT BE LIABLE FOR INCIDENTAL OR CONSEQUENTIAL DAMAGES (INCLUDING, WITHOUT LIMITATION, DAMAGE TO SD OR P2 CARD) RESULTING FROM THE USE OF THIS PRODUCT, OR ARISING OUT OF ANY BREACH OF THE WARRANTY. ALL EXPRESS AND IMPLIED WARRANTIES, INCLUDING THE WARRANTIES OF MERCHANTABILITY AND FITNESS FOR PARTICULAR PURPOSE, ARE LIMITED TO THE APPLICABLE WARRANTY PERIOD SET FORTH ABOVE

Some states do not allow the exclusion or limitation of incidental or consequential damages, or limitations on how long an implied warranty lasts, so the above exclusions or limitations may not apply to you. This warranty gives you specific legal rights and you may also have other rights, which vary from state to state.

If you have a problem with this product that is not handled to your satisfaction, then write to the Consumer Affairs Department at the Company address indicated above.

* The extended warranty covers the CCD block only during the second year following the original purchase date.

** P2 HD Camcorders - 10,000 operational hours (including hours of use during the first year)

P2 HD Mobile - 20,000 operational hours (including hours of use during the first year)

P2 HD Studio - 45,000 operational hours (including hours of use during the first year)

In the USA
FOR THE NEAREST SERVICE CENTER
VISIT WEBSITE:
<http://www.panasonic.com/support/>