

Panda Wireless N600 Dual Band Wireless N USB Adapter

PAU09

User Manual



Many thanks for purchasing a product. Please read the following user manual carefully to ensure that the device you have purchased will give you many years of pleasure.

1 Scope of delivery

- USB 2.0 WLAN adapter
- 2x WLAN antenna
- Driver CD
- User manual

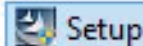
2 Technical specifications

Port	USB 2.0 Hi-Speed
Data rate	<ul style="list-style-type: none">• IEEE 802.11n: bis zu 300Mbit/s*• IEEE 802.11g: bis zu 54Mbit/s*• IEEE 802.11b: bis zu 11Mbit/s*• IEEE 802.11a: bis zu 54Mbit/s* <p><i>*The transmission rate depends on distance and outside differences</i></p>
Chipset	Ralink RT5572
Frequency range	2,4 GHz / 5 GHz
Features	WPS PBC – configuration via button

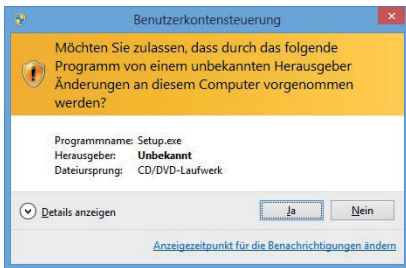
3 Driver installations

Insert the driver CD into your CD-ROM drive and plug the wireless adapter into a free USB 2.0 port (or higher) on your computer. Call up the contents of the driver CD and navigate to the subfolder “Drivers”. Open the folder “Windows”.

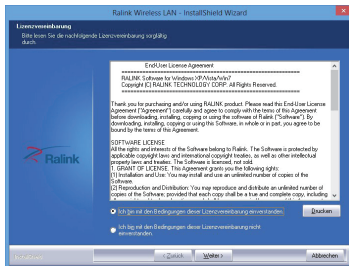
Please answer the security question with “Yes”.



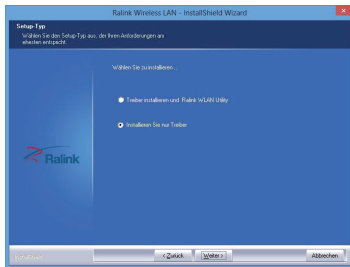
The installation assistant is running now. To start the installation, you have to agree with the terms of the license agreement. Then press the button “Next”.



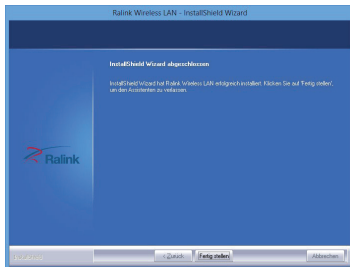
In the following window, a prompt asks if you want to install the software “Ralink Wireless Utility”.



Windows system already provides and allows all basic functions so that the installation of additional software is not required.



Click on “Next” and in it the following installation section on “Install”. The installation will begin. After successful installation please click on the button “Finish”.



The wireless adapter is now ready for use.

4 Safety instructions and disclaimer

Never try to open the device to carry out repairs or conversions. Avoid contact with mains voltages. Do not short-circuit the product. The device is not certified for use in the open air; only use it in dry conditions. Protect it from high humidity, water and snow. Keep it away from high temperatures. Do not subject the device to sudden changes in temperature or heavy vibration as this might damage electronic components.

Examine the device for damage before using it. The unit should not be used if it has received an impact or has been damaged in any other way. Please observe national regulations and restrictions. Do not use the device for purposes other than those described in the instructions. This product is not a toy. Keep it out of the reach of children or mentally impaired persons. Any repair or alteration to the device not carried out by the original supplier, will invalidate the warranty or guarantee. The product may only be used by persons who have read and understood these instructions. The device specifications may change without any separate prior notice to this effect.

5 Disposal instructions

Electrical and electronic devices may only be disposed of in accordance with the European WEEE Directive and not with household rubbish. Components must be disposed of or recycled separately as dangerous, toxic elements can inflict sustained damage on the environment if they are disposed of incorrectly. As a consumer, you are bound by the Electrical and Electronic Devices Act (ElektroG) to return electrical and electronic goods free of charge at the end of their useful life to the manufacturer, the place of purchase or to specially set up, public collection points. The details in each case are governed by national law. The symbol on the product, the operating instructions and/or the packaging refers to these regulations. By separating materials in this way, recycling and disposing of old devices, you are making an important contribution towards protecting our environment.

FCC Warning:

This equipment has been tested and found to comply with the limits for a Class B digital device, pursuant to part 15 of the FCC Rules. These limits are designed to provide reasonable protection against harmful interference in a residential installation. This equipment generates, uses and can radiate radio frequency energy and, if not installed and used in accordance with the instructions, may cause harmful interference to radio communications. However, there is no guarantee that interference will not occur in a particular installation. If this equipment does cause harmful interference to radio or television reception, which can be determined by turning the equipment off and on, the user is encouraged to try to correct the interference by one or more of the following measures:

- Reorient or relocate the receiving antenna.
- Increase the separation between the equipment and receiver.
- Connect the equipment into an outlet on a circuit different from that to which the receiver is connected.
- Consult the dealer or an experienced radio/TV technician for help.

Caution: Any changes or modifications to this device not explicitly approved by manufacturer could void your authority to operate this equipment.

This device complies with part 15 of the FCC Rules. Operation is subject to the following two conditions: (1) This device may not cause harmful interference, and (2) this device must accept any interference received, including interference that may cause undesired operation.

This **Panda Wireless N600 Dual Band Wireless N USB Adapter** meets the government's requirements for exposure to radio waves. The guidelines are based on standards that were developed by independent scientific organizations through periodic and thorough evaluation of scientific studies. The standards include a substantial safety margin designed to assure the safety of all persons regardless of age or health.

FCC RF Exposure Information and Statement The SAR limit of USA (FCC) is 1.6 W/kg averaged over one gram of tissue. Device types: **Panda Wireless N600 Dual Band Wireless N USB Adapter (FCC ID: 2ADUTLGP AU09)** has also been tested against this SAR limit. This device was tested for typical body-worn operations with the edge of the **Panda Wireless N600 Dual Band Wireless N USB Adapter** kept **5mm** from the **body**. To maintain compliance with FCC RF exposure requirements, use accessories that maintain a **5mm** separation distance between the user's **body** and the edge of the **Panda Wireless N600 Dual Band Wireless N USB Adapter**.