

PRODUCT USER MANUAL

802.11 Wireless Wi-Fi Adapter

**150M/300M/433Mbps
802.11 Wireless Wi-Fi Adapter**

User Manual


Version: V1.1

All rights reserved

All information contained in this sheet may not be changed without permission

1. Installation Steps

Installation steps of adapter driver program is same when it is installed in different operation system. Here takes the steps under Windows 7 for example to explain the installation process.

1. Double click the icon of installation package  to start the installation.



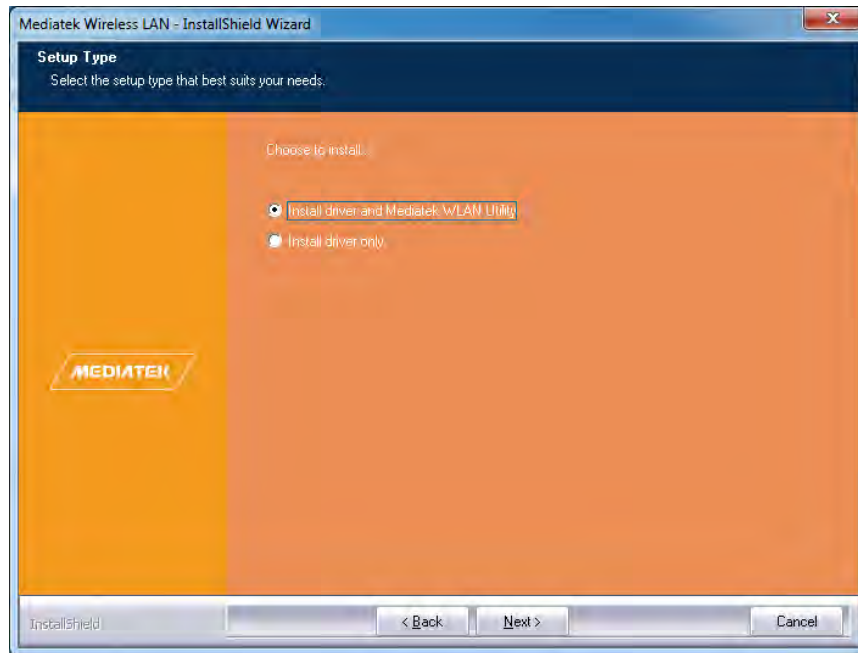
2. Choose "I accept the terms of the license agreement" and click "Next".



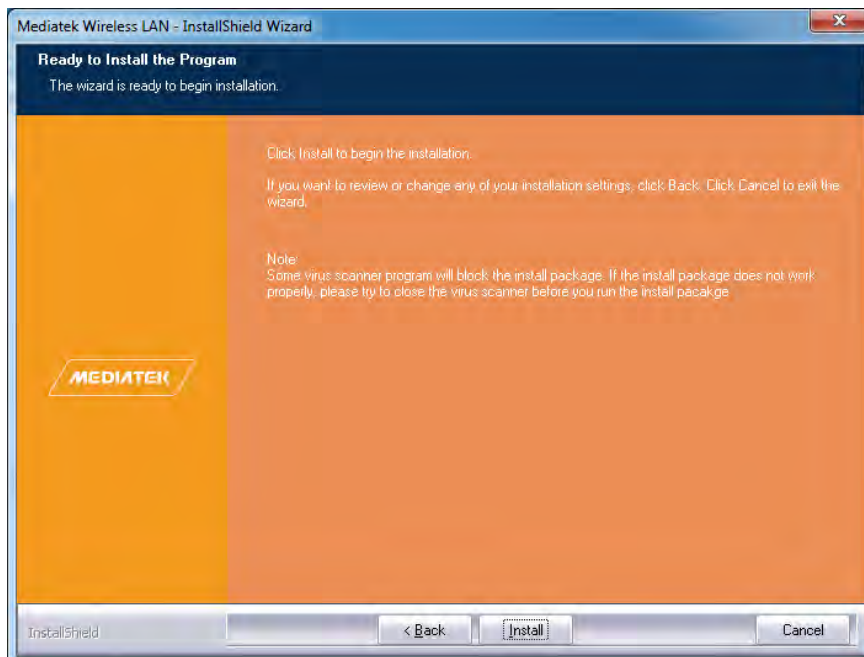
PRODUCT USER MANUAL

802.11 Wireless Wi-Fi Adapter

3. Users can choose the installation type for the actual needs. "Install driver and Mediatek WLAN Utility" is our recommended choice.



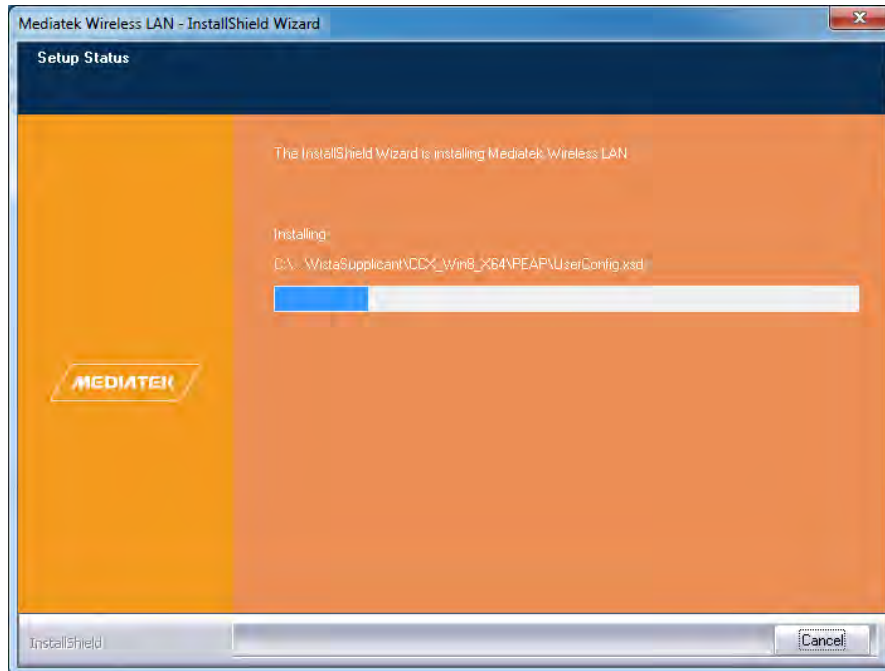
4. An UI will pop up to prompt that the system is ready for the installation, then click "Install".



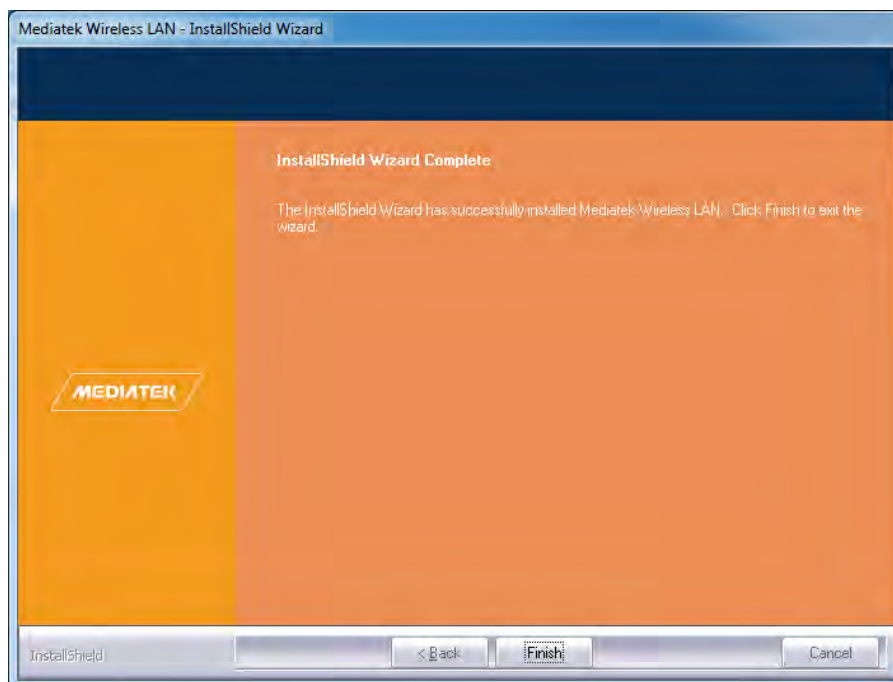
PRODUCT USER MANUAL

802.11 Wireless Wi-Fi Adapter

5. The system will show the installation processing bar. After the installation, another interface will show up.



6. When installation process is done, system will remind this information. Click "Finish" will accomplish the installation and log out from installation wizard automatically.





Notice: If you want to change the installation setup, please click "Back" to return to previous page to set it up again. If you want to quit the installation, please click "Cancel".

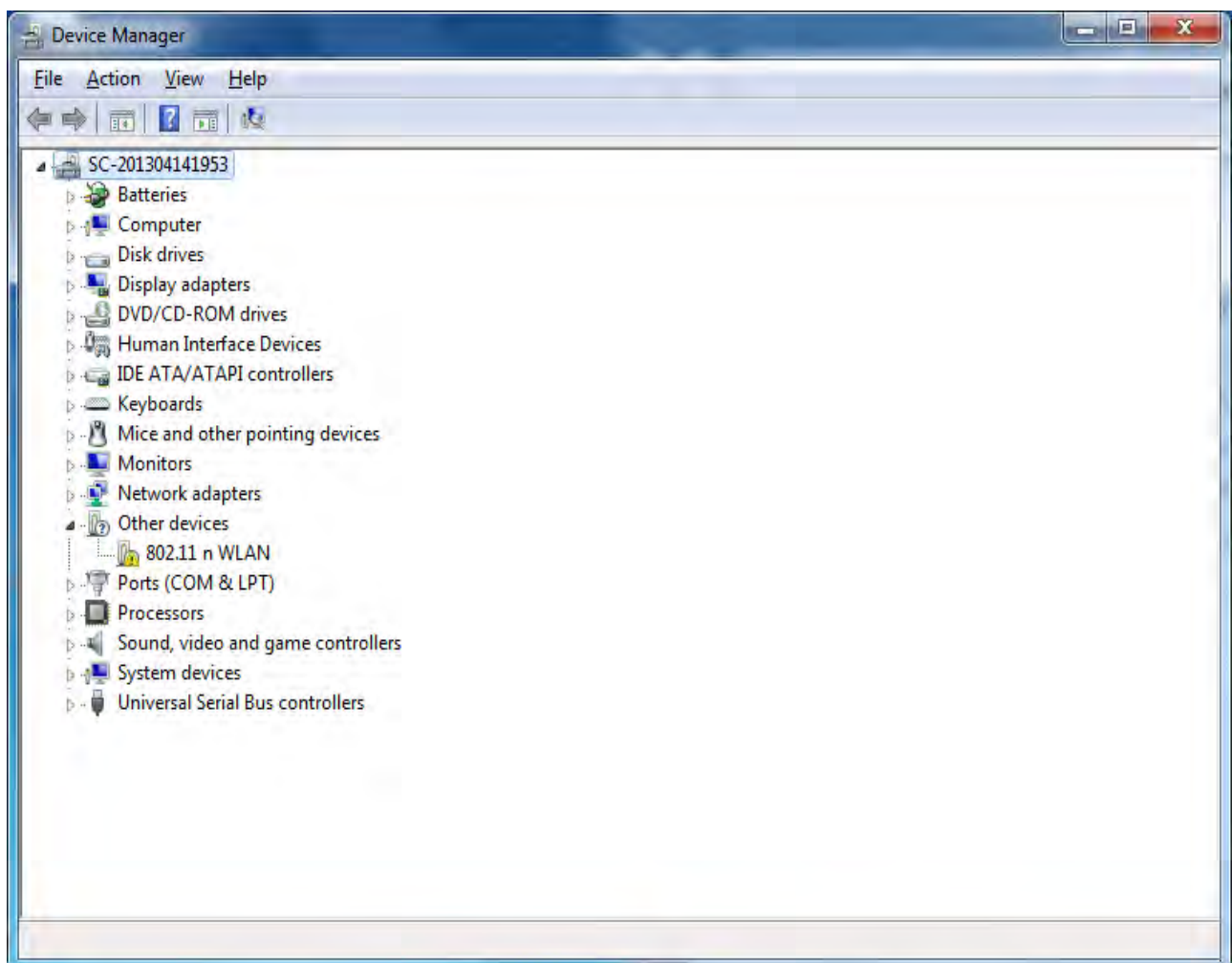
2. System Connection

2.1 Check Device Condition

After finishing the installation, users can find an icon  on the task bar, this icon has the information that our product is not existed. Therefore, users need to plug our adapter into the target USB2.0 port.

After plugging in, blue LED indicator on adapter will turn on. At the same time, icon  will turn to  to inform users that device is available but waiting for connecting.

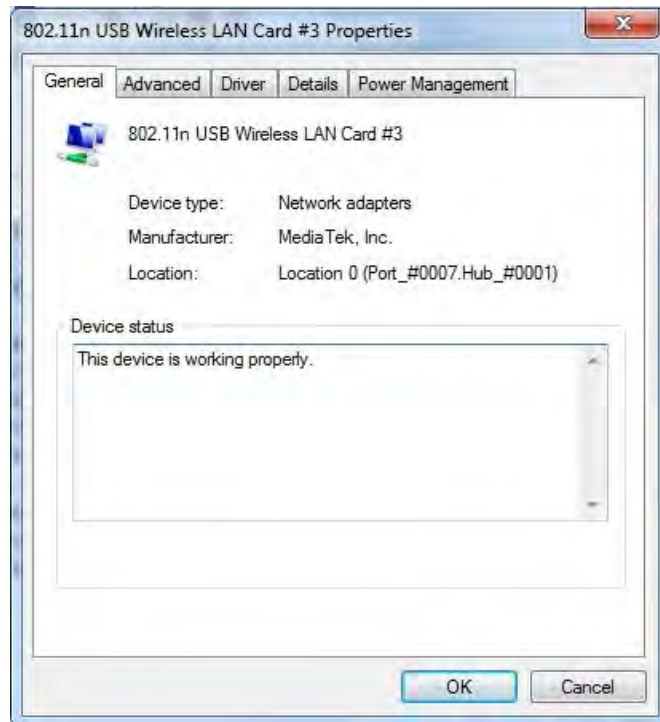
Users can check its condition in Device Manager.



PRODUCT USER MANUAL


802.11 Wireless Wi-Fi Adapter

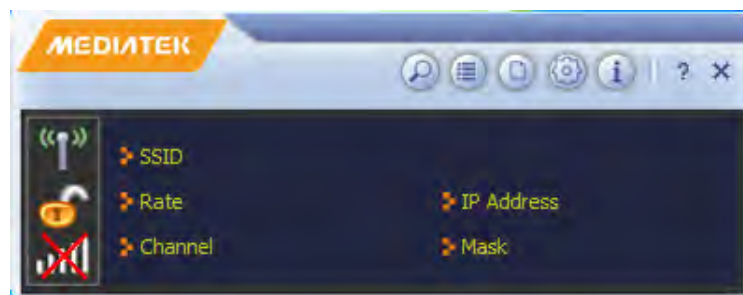
Double click device name "802.11ac Wireless LAN Card" can check its condition, and the condition will be shown like the below:



Click "OK" can finish this step.


2.2 Device Connection

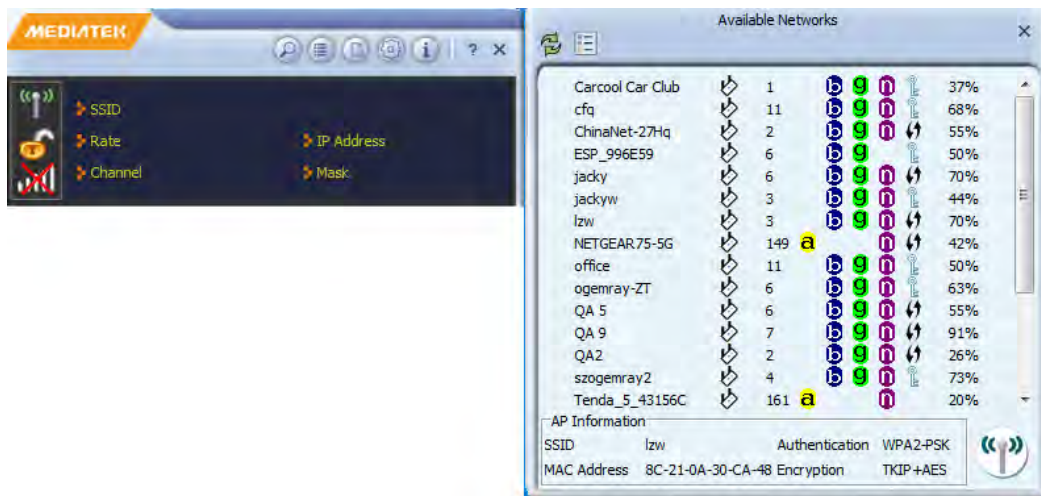
1. When device is working properly, please double click , or right click it and choose "Launch Config Utility", users will find an UI like the following picture shows:



PRODUCT USER MANUAL

802.11 Wireless Wi-Fi Adapter

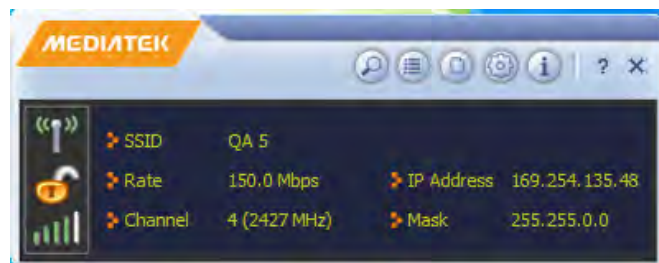
2. Click , users can check all available wireless networks:




3. Choose the desired wireless network name, the AP information of that network will be shown at the bottom for

reference. Click  will start the connection.

a) If the encryption pattern is NONE, system will start auto-connection, and the basic information of that network will be seen on home page.



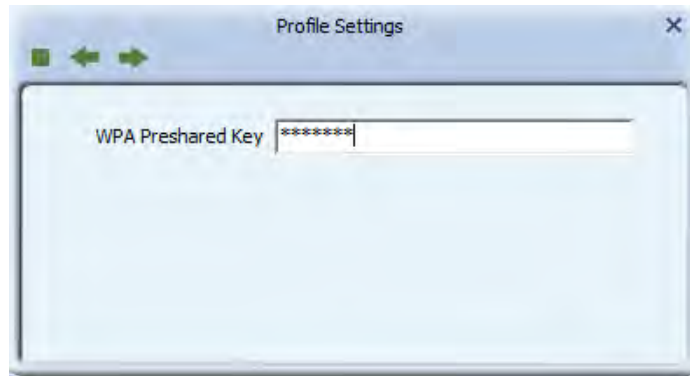
b) If the encryption pattern is not NONE, users will enter "Profile Settings" page when click  to connect this wireless network. Authentication pattern and encryption pattern can be revealed in this page.



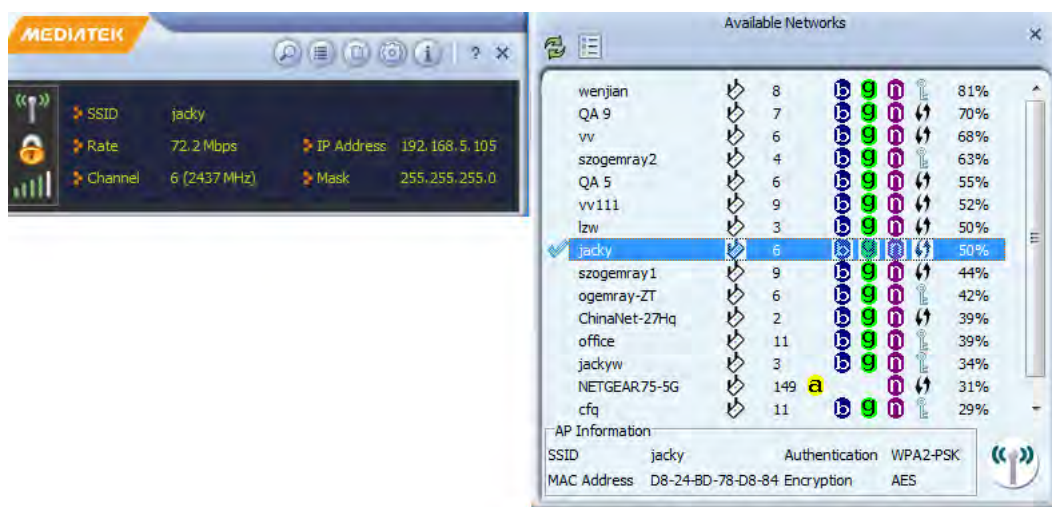
PRODUCT USER MANUAL


802.11 Wireless Wi-Fi Adapter


c) Click  to go to next step to input WPA preshared key.




d) Click  to go to next step. If users input the correct key number, the connection will be done successfully.




Left part is the basic informaton of the connected network. On the right part,  is used to remark the connected one.

4. When the connection is established, LED indicator on device will keep blinking, and users can enjoy the connected network environment.  on task bar is for knowing the connection situation.

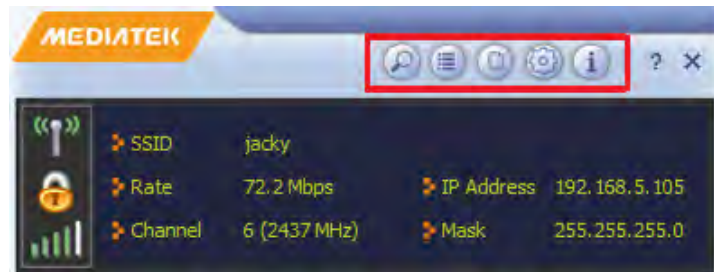
Notice:

1. Among the available network selections, 1-14 means the network of 2.4G band, 36-165 means the network of 5G band. If the network is marked as , then it is a 5G network for easy recognition.


2. Click  on home page, or right click the related icon on task bar to choose "Exit", network connction will be disconnected.

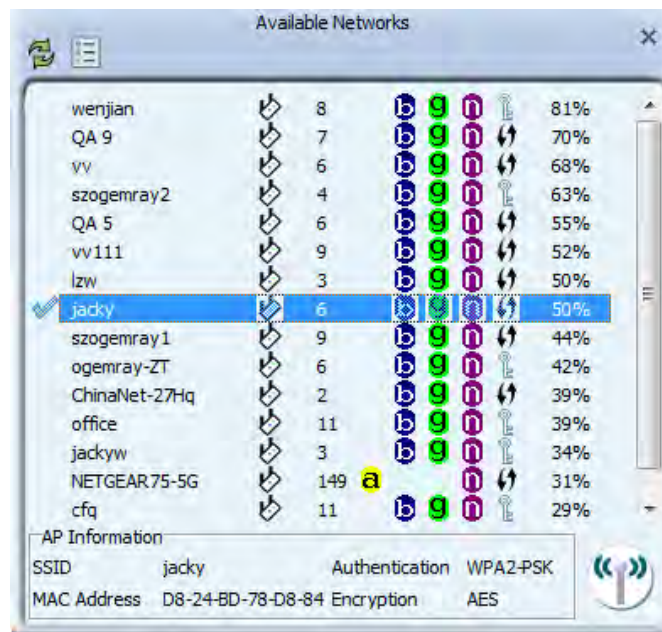
3. Home Page Introduction

Home page will display some basic information of the connected network, such as SSID, IP address, communication rate, channel, and subnet mask.





We will explain the usage of those functional buttons in the red square from left to right.

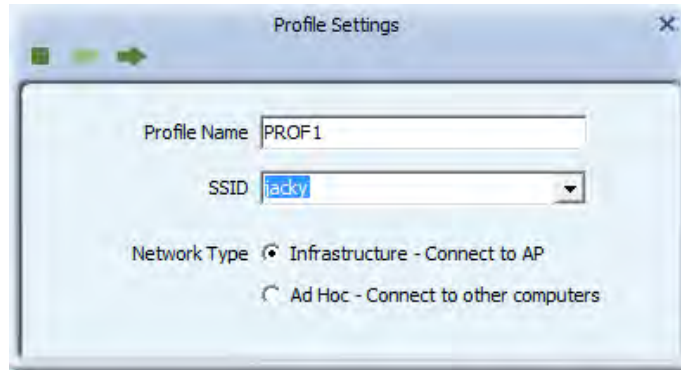
1.  button: This button is for searching all usable wireless networks. By clicking it, a page will show all networks that users can use for check.



PRODUCT USER MANUAL

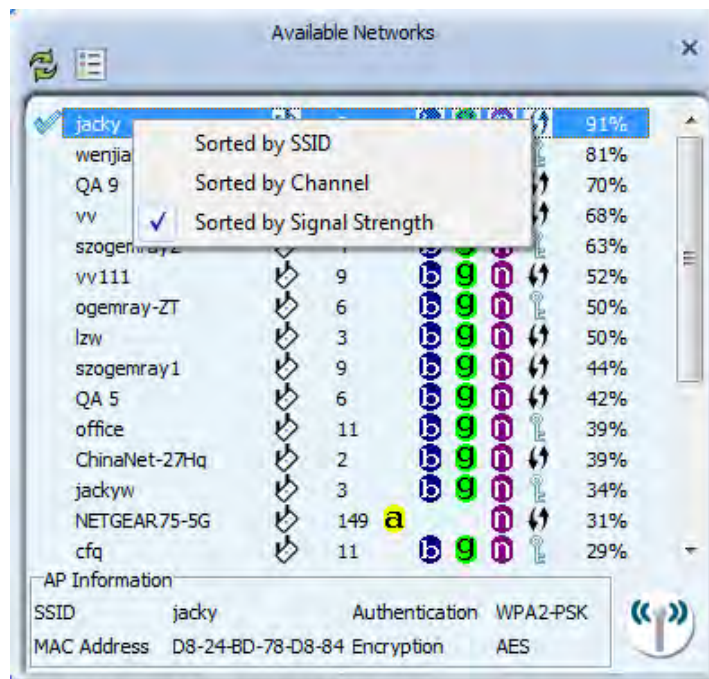
802.11 Wireless Wi-Fi Adapter


Click  can refresh the list information, click  will guide users to "Profile Settings" page for the connection setup of desired network.



Follow and guide and click  to finish the connection setup.


Right click the selected network, users can get the 3 ways of network sequencing. Users can choose the preferred one to sequence the list for convenient check.

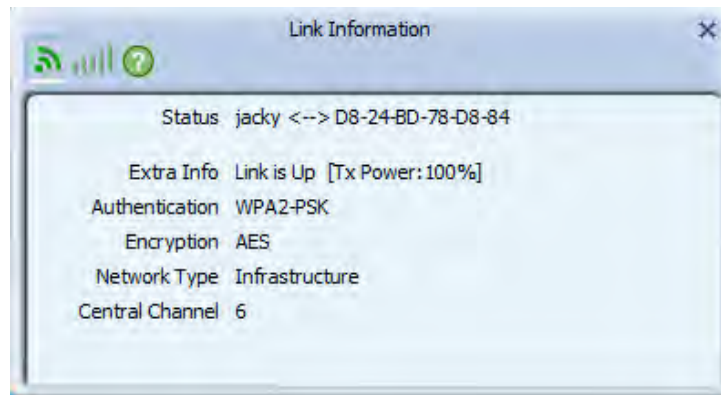




Click  can connect to network and enter the page of "Profile Settings" directly.

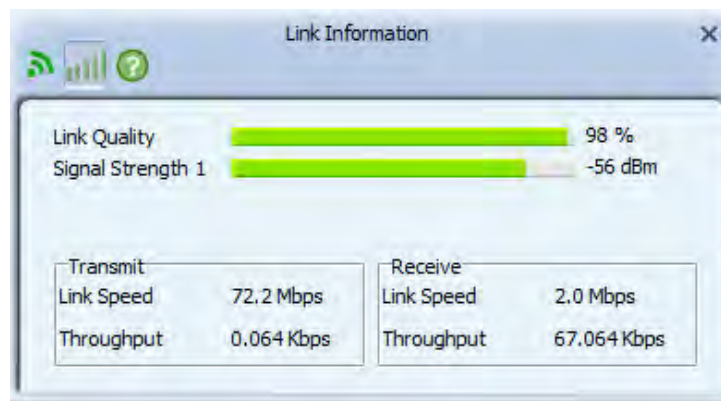
PRODUCT USER MANUAL


802.11 Wireless Wi-Fi Adapter

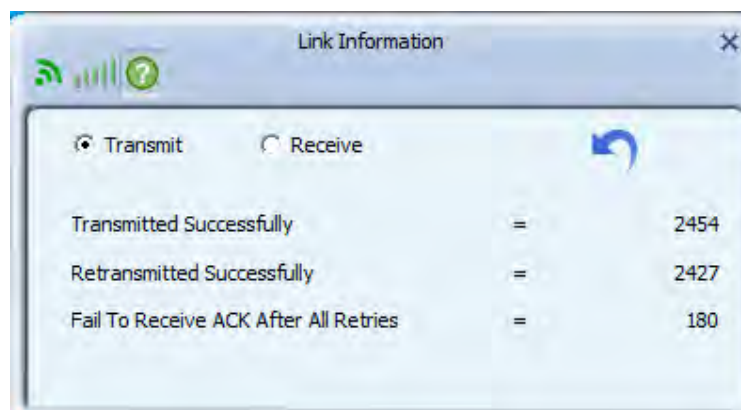
2.  button: Click this button can gain network link information.



-  button: Showing the link information just like the page above s hows.
-  button: giving some link data information, such like link quality, signal strength, transmit rate and receive rate.



-  button: Providing some data information about some statistic information about transmitting and receiving.










Remark: WPS function needs device (WiFi adapter) support for WPS button.

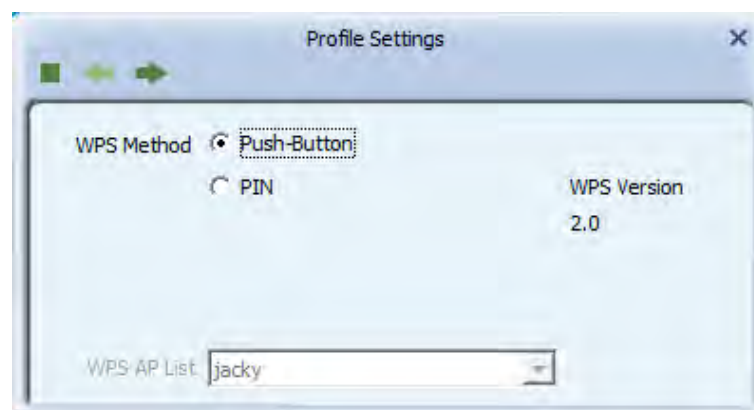
PRODUCT USER MANUAL

802.11 Wireless Wi-Fi Adapter

3.  button: Users can enter "Profile List" page by clicking it.



- Click  button, can add a network connection into system, users can refer to chapter 3.2 for detailed information.
- Click  button, can delete the chosen network connection.
- Click  button can do edit operation.
- Click  button, can import some files into system.
- Click  button, can export some files out from system.
- Click  button can add a WPS profile. When finish the related setup, please click  to follow the adding guide and finish it.

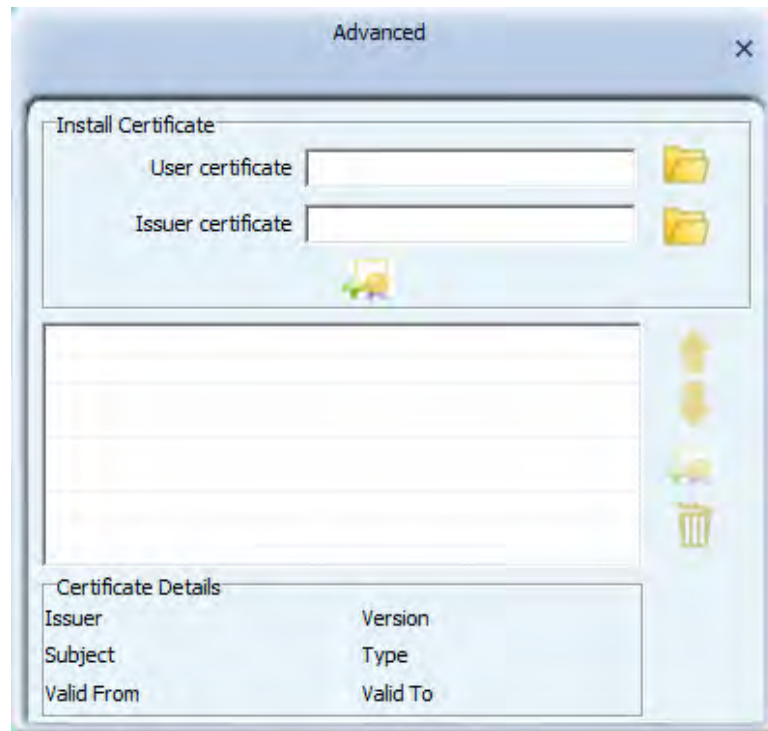



Remark: WPS function needs device (WiFi adapter) support for WPS button.

PRODUCT USER MANUAL

802.11 Wireless Wi-Fi Adapter

4.  button: This button is for advanced setup.



5.  button: This button is for checking product version, MAC address information.



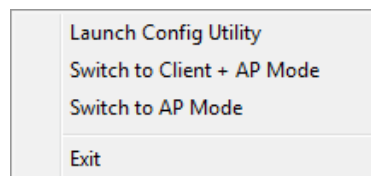
4. Device Mode Switch

Here are 2 extra work modes for users to choose according to their actual needs and real situation: Client+AP mode and AP mode.

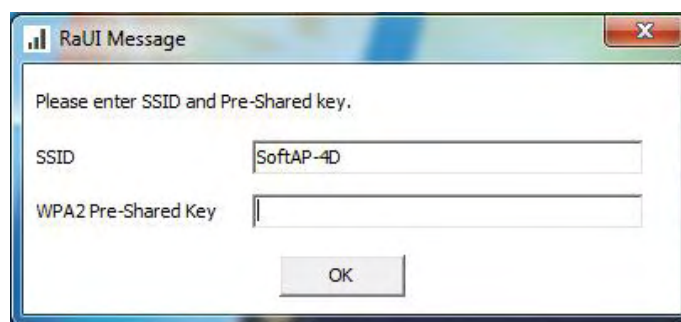
Client+AP mode can make device connect WLAN and use itself as a Wi-Fi hotspot simultaneously; AP mode is for access point mode.

4.1 Client+AP Mode

Right click the device icon on task bar, users can see a pop-up list:



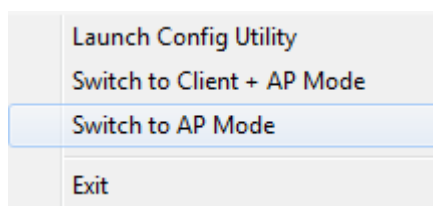
Click "Switch to Client+AP Mode", users can see the following page:




Input SSID and pre-shared key and click "OK", then follow the guide to switch the work mode successfully.

4.2 AP Mode

Right click the device icon on task bar, users can see a pop-up list:



Click "Switch to AP Mode", the configuration utility will be activated and the home operation page will pop up.

The device icon will turn to , and the operation method is described in chapter 4.

Notice: If users want to turn back to client mode, just right click device icon and choose "Switch to Client Mode".

5. Disclaimer

This **DATA SHEET** document is the guidance of the installation and tentative usage of our products. Before operating the product, please read this data sheet carefully.

All rights reserved. Any reproduction, translation or simplification of this data sheet in whole or in part is strictly prohibited without written permission from our company.

We do not provide any guarantee about this data sheet, software or other relevant information. We solemnly state that there is no implied business warranty or commercial contract assurance in the sheet, software or other related information. The data sheet is only for operation guidance and reference; it cannot be used as basis or supplement of any other contract or duty.

FCC Statement

This equipment has been tested and found to comply with the limits for a Class B digital device, pursuant to Part 15 of the FCC Rules. These limits are designed to provide reasonable protection against harmful interference in a residential installation. This equipment generates uses and can radiate radio frequency energy and, if not installed and used in accordance with the instructions, may cause harmful interference to radio communications. However, there is no guarantee that interference will not occur in a particular installation. If this equipment does cause harmful interference to radio or television reception, which can be determined by turning the equipment off and on, the user is encouraged to try to correct the interference by one or more of the following measures:

- Reorient or relocate the receiving antenna.
- Increase the separation between the equipment and receiver.
- Connect the equipment into an outlet on a circuit different from that to which the receiver is connected.
- Consult the dealer or an experienced radio/TV technician for help.

This device complies with part 15 of the FCC Rules. Operation is subject to the following two conditions:(1) This device may not cause harmful interference, and (2) this device must accept any interference received, including interference that may cause undesired operation.

Changes or modifications not expressly approved by the party responsible for compliance could void the user's authority to operate the equipment.

For 5180-5240MHz, the device indoor used only.

The device has been evaluated to meet general RF exposure requirement.

The device can be used in portable exposure condition without restriction.