

User Manual

Panda Wireless AC600 Dual Band Wireless AC USB Adapter With 5dBi Antenna

Trade Mark: Panda Wireless

Model: PAU0B

Panda Wireless, Inc.

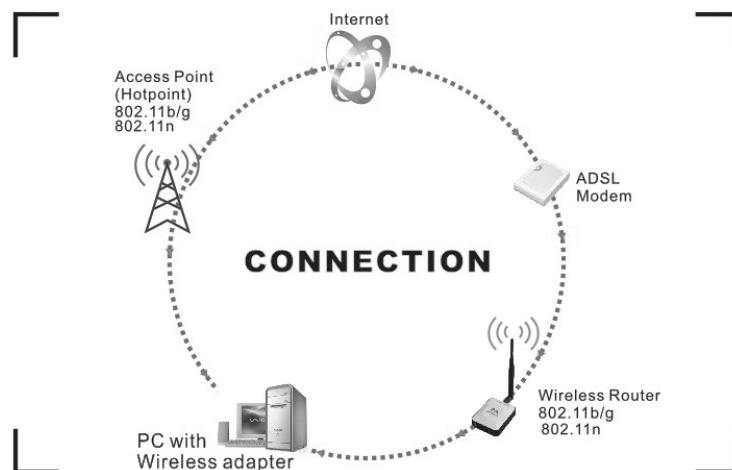
Address: 15559 Union Ave, Suite 300, Los Gatos, CA 95032

Panda Wireless User's Manual

1. Introduction

Thank you for purchasing the Panda Wireless® PAU0B AC600 Dual Band Wireless AC USB Adapter. Panda Wireless® PAU0B Adapter is easy to use and set up. If you are tired of dealing with all those messy wires to connect a laptop or PC to your office or home network, this Wireless adapter is an ideal access solution for wireless Internet connection.

A typical Internet access application for the USB wireless adapter is shown in the following diagram:



There are two different ways to access Internet:

1. With a wireless adapter, you can receive and transfer signal via a wireless router, then pass to a Cable/DSL modem, then to local ISP (Internet service supplier) through a telephone line.
2. With a wireless adapter, you can receive and transfer signal via local AP (Access Point) or so called WiFi Hotspot directly.

2. Package Contents:

- Panda Wireless® PAU0B AC600 Wireless AC USB Adapter with 5dBi Antenna
- Installation CD
- User's Manual

Product Warranty

Panda Wireless warrants to the end user ("Customer") that this adapter will be free from defects in workmanship and materials, under normal use and service, for twelve (12) months from the date of purchase from its authorized reseller. Information in this document is subject to change without prior notice.

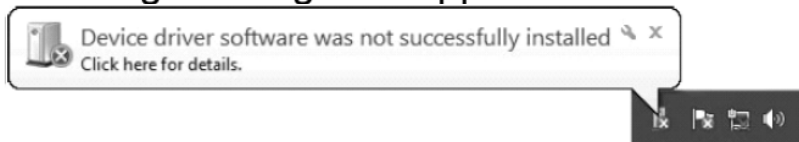
3. Driver Installation

To install the driver of the USB adapter, please log into a user account with the administrator's privilege before you follow the installation instructions below:

Tips: Please upgrade your Windows computer to the latest Service Pack from Microsoft. For example, the latest Service Pack for Windows 7 is Service Pack 1. . Please send an email to support@pandawireless.com if you don't know how to do it.

For Windows 7:

Once the wireless USB adapter is plugged into an USB port, the following message will appear on screen .



For Windows 10:

Need to install the driver for the Panda adapter to access both 2.4 GHz and 5GHz networks.

Please insert the CD into your CD-ROM drive. The Windows Installer will run automatically or Go to the "Windows" folder on the CD and double click on WinInstallerPandaUSBAdapterV1.x.exe

Notes:

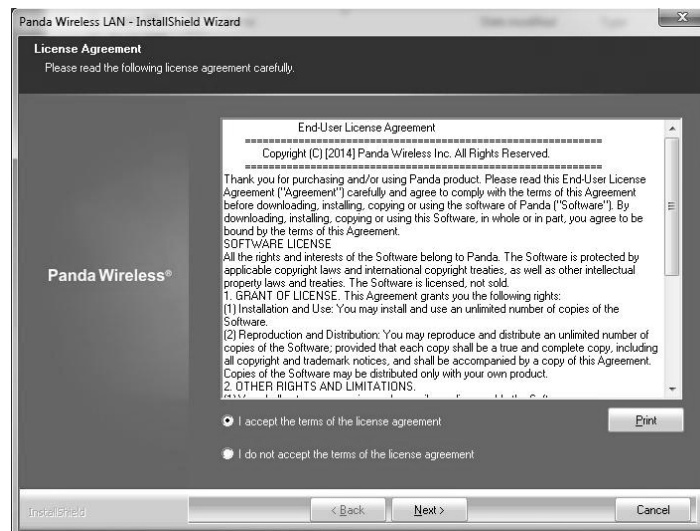
a) Due to frequent updates, the contents in the CD are probably outdated upon receipt. You can get the latest drivers and manuals on the Panda Wireless web site: www.pandawireless.com.

Panda Wireless User's Manual

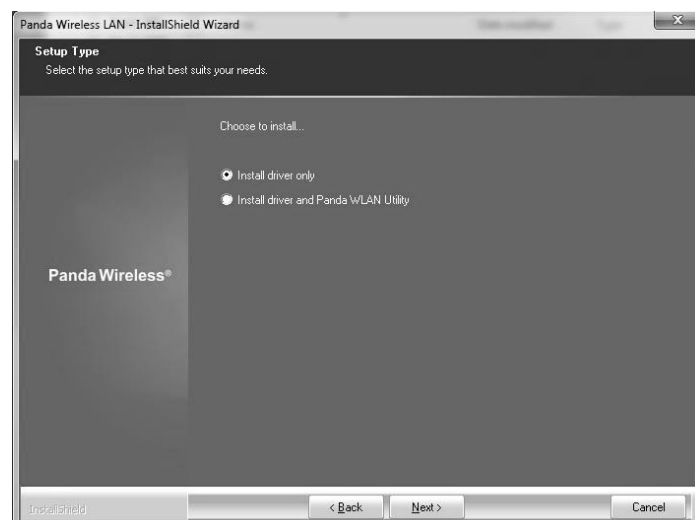
b) Some anti-virus/firewall software block Windows to load the drivers for the Panda adapter. i.e. Zone Alarm, AVG, AVast, Kaspersky, Bit Defender, etc. You need to uninstall the software before you install a driver for the Panda adapter.

1) Follow the instructions and prompts of the “**Install Shield Wizard**” to finish the driver installation:

a. Select the “**I accept the terms of the license agreement**” and then click the “**Next**”.



b. Select “**Install Driver Only**” and click “**Next**”.



Panda Wireless User's Manual

Note: Select “Install driver and WLAN Utility” if you want to set up your computer as a WiFi Hotspot/WiFi repeater with the Panda adapter.

c. Click the “**Install**” to confirm the installation and then wait a while.



d. Click “**Finish**” to finish the driver installation.

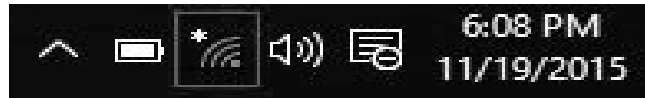


4. How to connect to your own wireless network

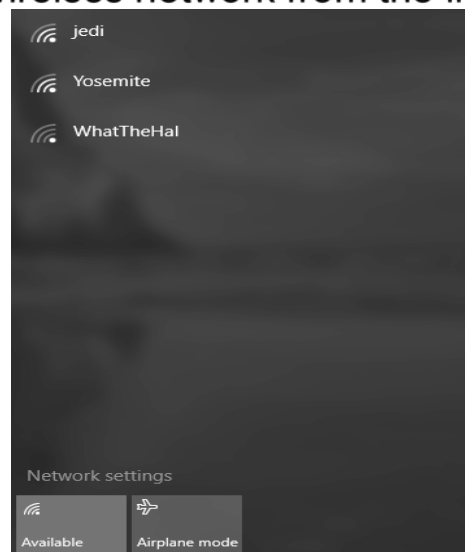
Plug the Panda adapter into one of the USB ports of your computer

For Windows 10:

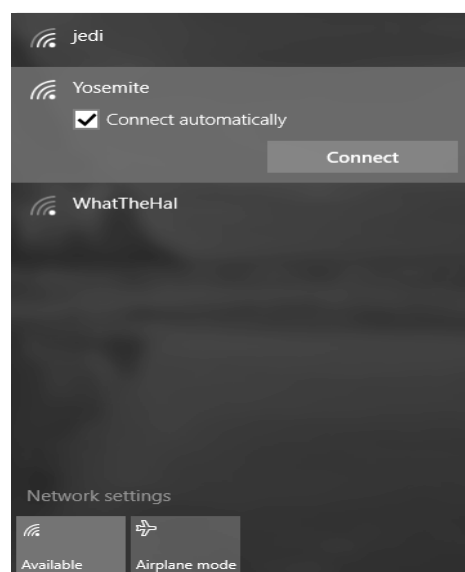
1) You move the mouse to the lower right hand corner of the screen. Select the wireless icon in the red rectangle



and select your wireless network from the list.

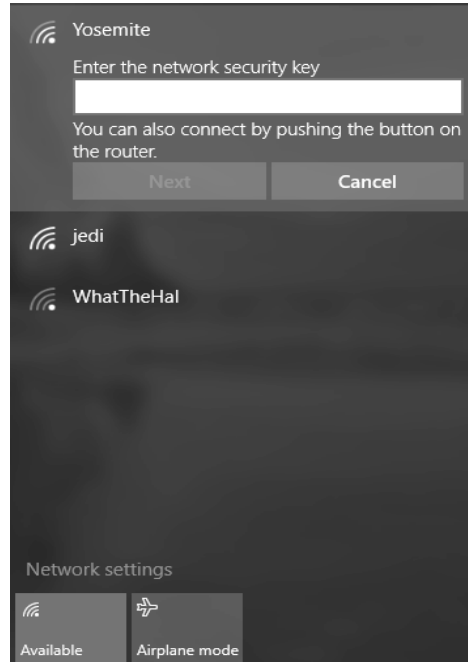


2) Click the “Connect” button to connect to your wireless network.

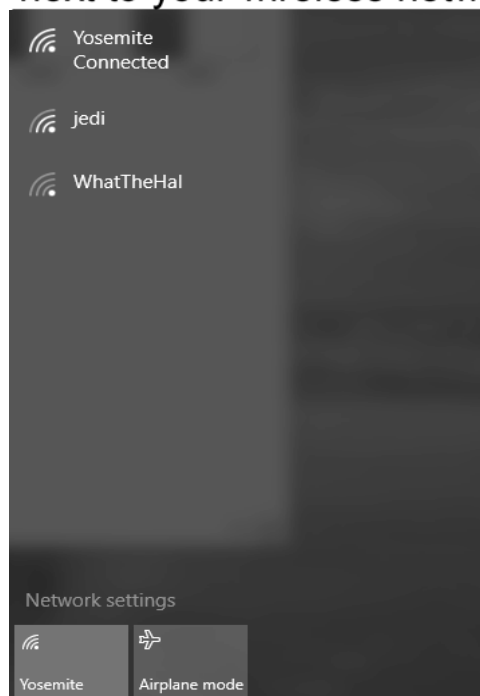


Panda Wireless User's Manual

3) If your wireless network has configured with wireless security, enter the network password. The following is an example for password protected network.




4) Your computer is connected to your wireless network if you see "Connected" next to your wireless network.

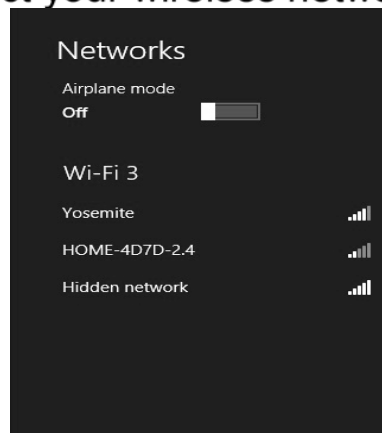


Panda Wireless User's Manual

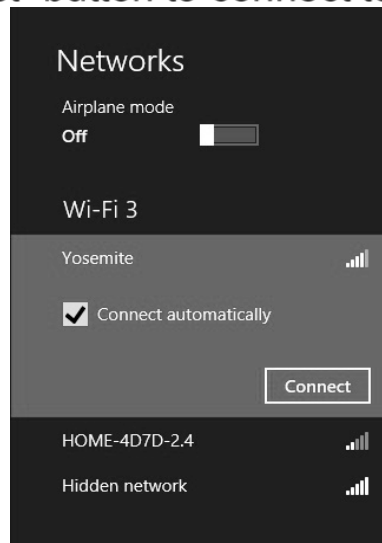
For Windows 8/8.1:

1) You move the mouse to the bottom or top right corner of the screen and select the cog icon labeled Settings. Select the wireless

icon  and select your wireless network from the list.

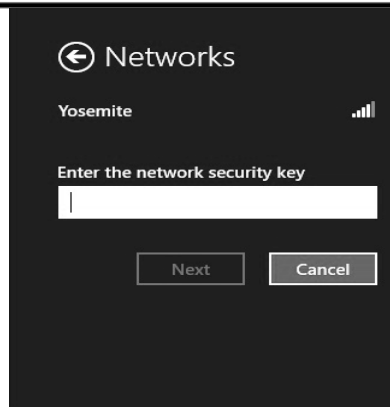


2) Click the “Connect” button to connect to your wireless network.

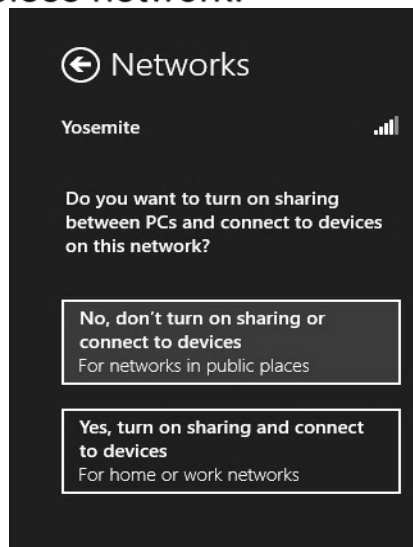


3) If your wireless network has configured with wireless security, enter the network password. The following is an example for password protected network.

Panda Wireless User's Manual




4) You can select to turn on/off sharing before your computer is connected to your wireless network.

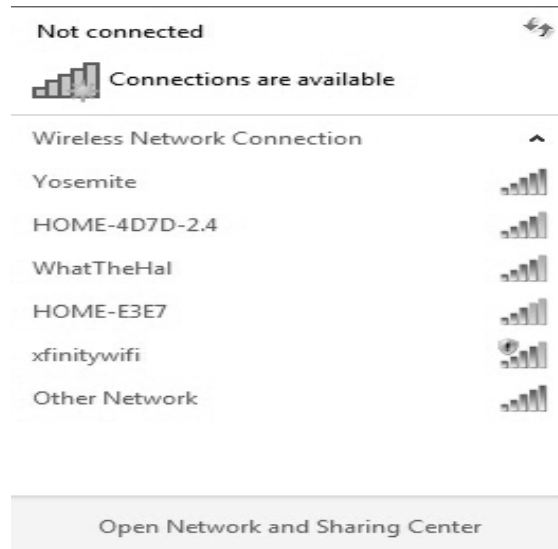


5) Your computer is connected to your wireless network if you see "Connected" next to your wireless network.



For Windows 7:

1) Click on the wireless icon  in the taskbar in the lower right hand corner of your screen to display the available wireless networks.



2) Select your wireless network, click "Connect" button, and enter the network password to connect to your wireless network.



Panda Wireless User's Manual

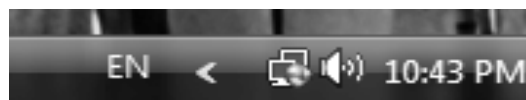


4) Your computer is connected to your wireless network if you see “Connected” next to your wireless network.



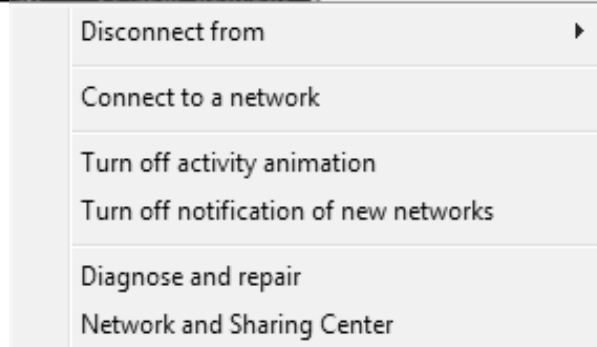
For Windows Vista:

Windows Vista shows a double computer icon in the Windows system tray, which is located in the bottom-right corner of your computer screen.



Right click the icon and then select “Connect to a network” to launch the Connect to a network window.

Panda Wireless User's Manual



Select your wireless network, click “Connect” and enter the network password to connect to your wireless network.

For Windows XP:

Windows XP shows a computer icon in the Windows system tray, which locates in the bottom-right corner of your computer screen.



Right click the icon and then select “View Available Wireless Networks” to launch the Wireless Network Connection window which displays all the available wireless networks.



Select your wireless network, click “Connect” and enter the network password to connect to your wireless network.

Tips: If you want to connect to a free/paid WiFi Hotspot in a public area, simply select it from the available wireless networks and then click “Connect”. Your default internet browser will be launched automatically—you will be connected to the Internet after you enter the necessary information to access to the WiFi Hotspot.

5. How to use the Wireless Utility

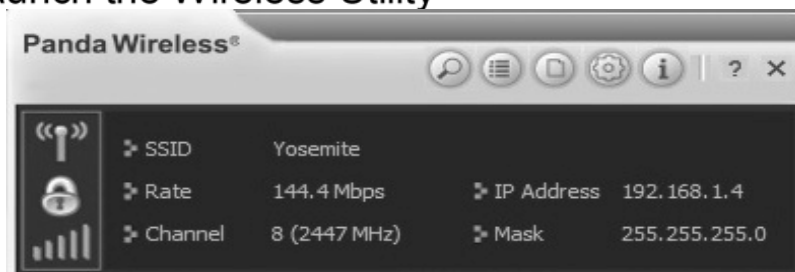
The Wireless Utility software can operate in any of the three modes: Client, AP and Client+AP. The last mode is only available in Windows 7 or higher.

If you select “Install driver and Wireless Utility” during the software installation process, the system will show a wireless icon like the signal bars in the Windows system tray, which is located in the bottom-right corner of your computer screen.

The wireless icon will change colors according to the signal strength after you plug the Panda adapter into your computer.

✧ **Client Mode:** Your computer can connect to your wireless router or AP via the Panda adapter.

1) Right click the wireless icon and then select “Launch Config Utility” to launch the Wireless Utility



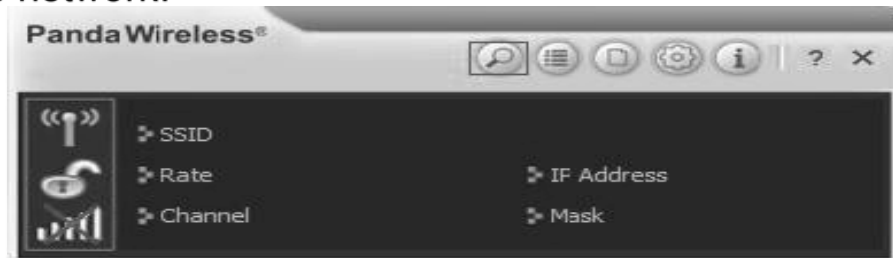
The Wireless Utility starts in compact mode as shown above, which includes “Available Networks”, “Link Information”, “Profile Settings”, “Advanced”, “About” and “Help” buttons at the upper right hand corner.

2) Below are the steps to connect to a wireless network using the Wireless Utility.

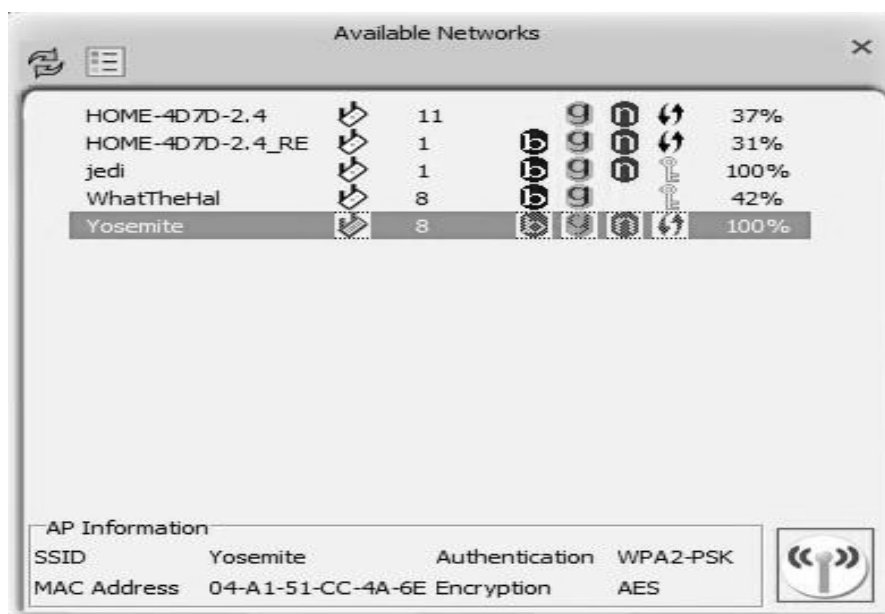
a. The Wireless Utility will connect to an open wireless network automatically by default. Go to (b) if you want to connect to your wireless network.

Panda Wireless User's Manual

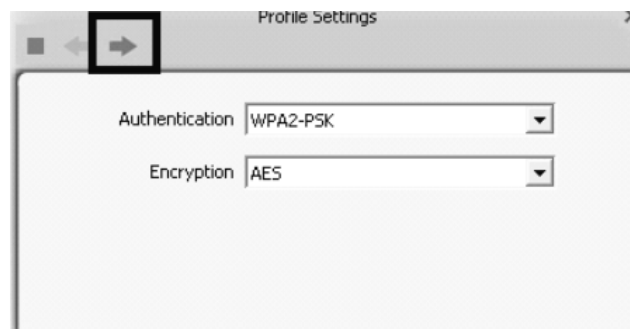
b. Click the “Available Networks” button to connect to your wireless network.



c. Select your wireless network and then click the “connect” icon

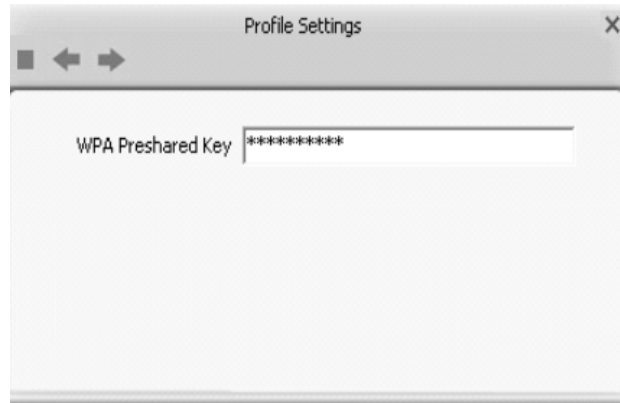


d. The Wireless Utility automatically detects the security settings of the network to which you are connecting in the Profile Settings window. The Profile Settings window shows that WPA2-PSK and AES are detected as shown below, Click the right arrow to go to next screen.

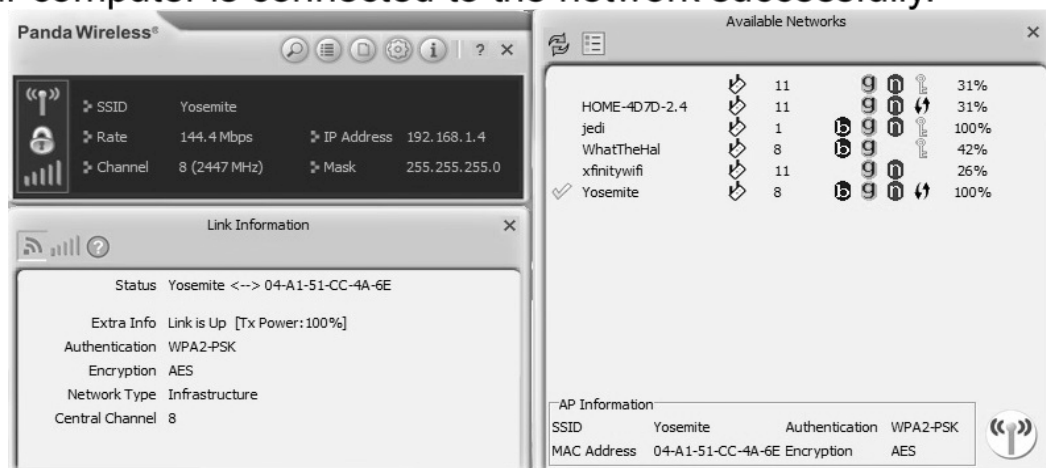


Panda Wireless User's Manual

f. You enter the network password in the 'WPA Pre shared Key' field for your wireless network. Click the right arrow to save your settings and connect to the network.



g. You will see a check mark next to your wireless network if your computer is connected to the network successfully.



✧ **AP Mode:** You can set up the Panda adapter as an AP, which allows other users to connect to Internet through your computer. Before using this mode, your computer needs to have an existing Internet connection via Ethernet connection or 3G wireless connection.

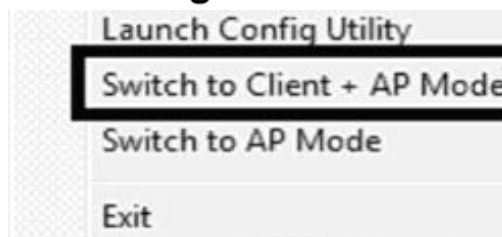
Right click the wireless icon and select "Switch to AP Mode" to launch the Wireless Utility as shown below:

Panda Wireless User's Manual

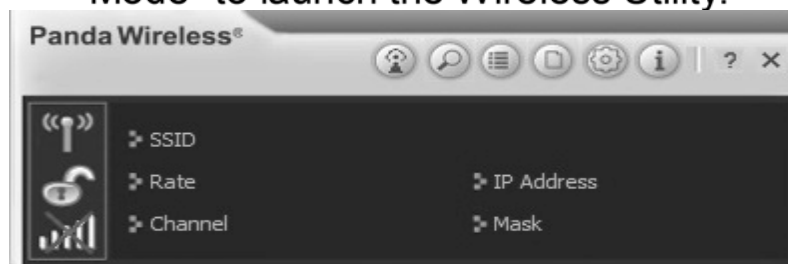


The Wireless Utility includes “AP Setup”, “Access Control List”, “Connected Devices”, “About” and “Help” buttons in the upper right hand corner. Click the “AP Setup” button to create a new wireless network.

✧ **Client + AP Mode:** You can set up your computer as a WiFi repeater via the Panda adapter in this mode. ***It is only available in Windows 7 or higher.***



Right click on the wireless icon and select “Switch to Client + AP Mode” to launch the Wireless Utility.



The Wireless Utility includes “AP Setup”, “Available Networks”, “Link Info”, “Profile Settings”, “Advanced”, “About” and “Help” buttons in the upper right hand corner.

In this mode, your computer is connected to a wireless network which is connected to the internet and broadcasts wireless signals to create another wireless network simultaneously. All your wireless devices can share the wireless internet connection to get on the internet via the Panda adapter.

FCC Warning:

This equipment has been tested and found to comply with the limits for a Class B digital device, pursuant to part 15 of the FCC Rules. These limits are designed to provide reasonable protection against harmful interference in a residential installation. This equipment generates, uses and can radiate radio frequency energy and, if not installed and used in accordance with the instructions, may cause harmful interference to radio communications. However, there is no guarantee that interference will not occur in a particular installation. If this equipment does cause harmful interference to radio or television reception, which can be determined by turning the equipment off and on, the user is encouraged to try to correct the interference by one or more of the following measures:

- Reorient or relocate the receiving antenna.
- Increase the separation between the equipment and receiver.
- Connect the equipment into an outlet on a circuit different from that to which the receiver is connected.
- Consult the dealer or an experienced radio/TV technician for help.

Caution: Any changes or modifications to this device not explicitly approved by manufacturer could void your authority to operate this equipment.

This device complies with part 15 of the FCC Rules. Operation is subject to the following two conditions: (1) This device may not cause harmful interference, and (2) this device must accept any interference received, including interference that may cause undesired operation.



Specific Absorption Rate (SAR) information:

This device meets the government's requirements for exposure to radio waves. The guidelines are based on standards that were developed by independent scientific organizations through periodic and thorough evaluation of scientific studies. The standards include a substantial safety margin designed to assure the safety of all persons regardless of age or health. FCC RF Exposure Information and Statement the SAR limit of USA (FCC) is 1.6 W/kg averaged over one gram of tissue. Device types: Panda Wireless AC600 Dual Band Wireless AC USB Adapter With 5dBi Antenna (FCC ID: 2ADUTLGPAU0B) has also been tested against this SAR limit. This device was tested for typical body-worn operations with the back of the device kept 0.5cm from the body. To maintain compliance with FCC RF exposure requirements, use accessories that maintain a 0.5cm separation distance between the user's body and the back of the device. The use of belt clips, holsters and similar accessories should not contain metallic components in its assembly. The use of accessories that do not satisfy these requirements may not comply with FCC RF exposure requirements, and should be avoided.