

Panda Wireless®

Version 4.0 (BLE + EDR)

Bluetooth USB Adapter

Quick Start Guide

Model number: PBU40

FCC ID:2ADUTLGPBU40

Panda Wireless is a trademark of Panda Wireless, Inc. All product names are the trademarks and registered trademarks of the respective owners. The Bluetooth word, mark and logos are owned by the Bluetooth SIG, Inc. This manual may not be copied in any media or form without the written consent of Panda Wireless.

TABLE OF CONTENTS

Introduction.....	1
Features.....	1
System Requirements.....	1
Install Wireless Software Stack.....	2

Introduction

Panda Wireless' BT 4.0 dongle features the latest version 4.0(B LE + EDR)specification, the PBU40 Bluetooth USB dongle provides wireless links between your computer and other Bluetooth devices at speed up to 25 Mbps. The Panda Wireless BT 4.0 dongle is compatible with all Bluetooth certified devices.

Features

- In compliance with Bluetooth standard version 4.0(BLE+EDR)
- Work on machine running Windows XP/Vista/7/8, Mac OS X, Linux
- No need to install driver under Windows XP/Vista/7/8, Mac OS X, Linux
- Wireless data exchange between your computer and other Bluetooth devices
- Ultra low power consumption

System Requirements

- Processor: Intel/AMD CPUs (clock frequency >1GHz recommended)
- Operating System: Microsoft Windows XP/Vista/7/8, Mac OS X, Linux
- System memory: 1GB minimum
- Hard disk free space: 500 MB

For Windows Users: Panda BT 4.0 is a Plug and Play device for any machine running Windows XP/Vista/7/8. You need to install the Wireless Software Stack in order to utilize the full capabilities of the Panda BT4.0 dongle.

Wireless Software Stack Installation for Windows Users Only

What are included in the Wireless Software Stack?

- a) Generic Bluetooth Radio
- b) Bluetooth Device (RFCOMM Protocol TDI)
- c) Microsoft Bluetooth Enumerator
- d) Bluetooth Device (Personal Area Network)
- e) CSR Bluetooth Radio
- f) Bluetooth Personal Area Network Device
- g) Bluetooth SPP Driver

For Mac and Linux Users: Panda BT4.0 dongle is a Plug and Play device for any machine running Mac OS X and Linux. You need to run Mac OS X 10.6 or higher and the latest Linux distributions (i.e. Ubuntu, Mint, Fedora...etc.) in order to utilize the full capabilities of the Panda BT4.0 dongle

Install Wireless Software Stack

Please see below for the instructions to install the Wireless Software Stack on Windows XP/Vista/7/8.

Step 0: Please remove any previous version of the Wireless Software Stack that exists in your systems.

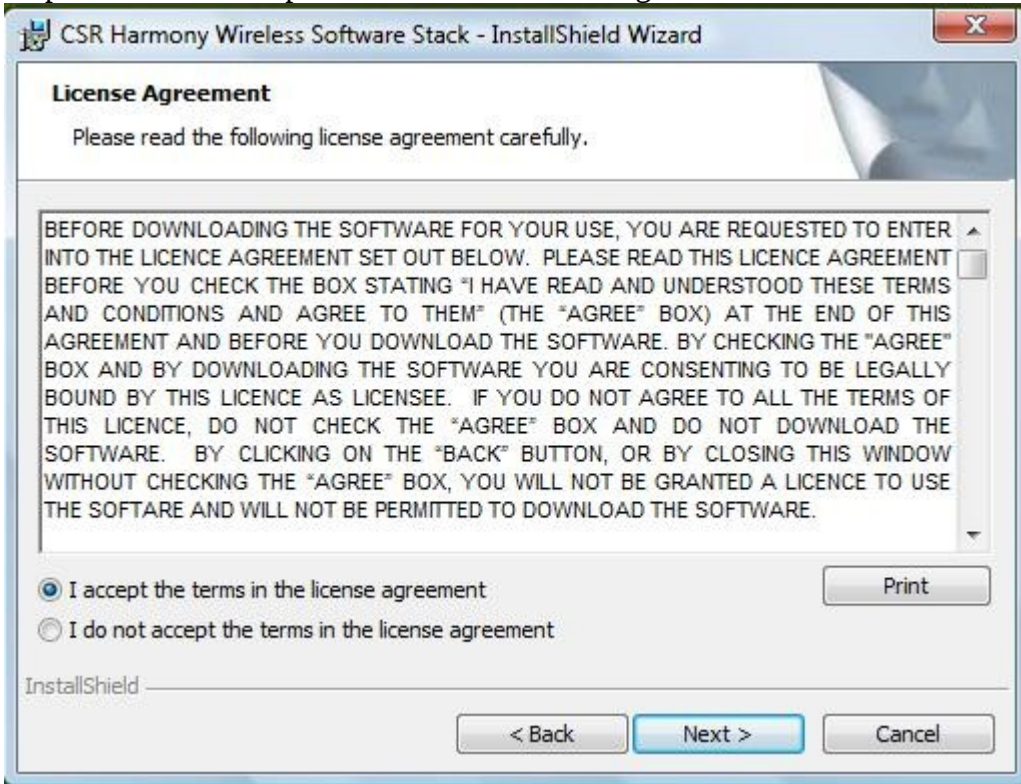
Step 1: Insert the installation CD into CD drive of your computer. The auto-installation program will guide you to complete the installation. Just click “Run setup.exe” to start the installation.



Step 1: Click “Next” to continue.



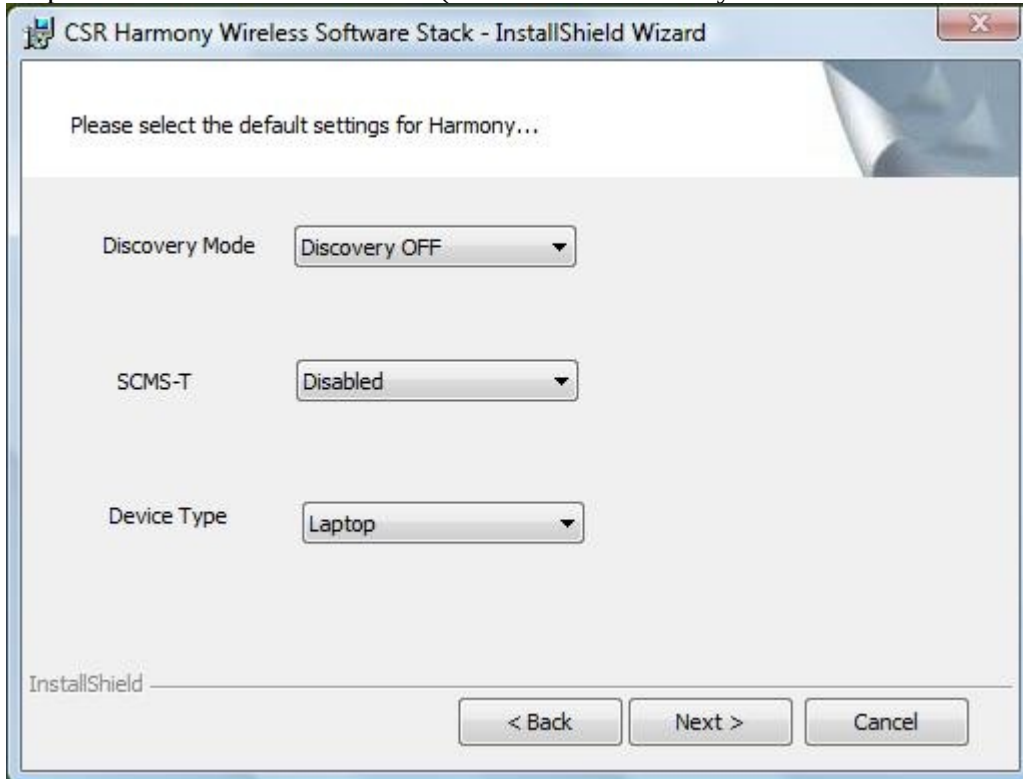
Step 2 : Select “I accept the terms in the license agreement” and click “Next” to continue.



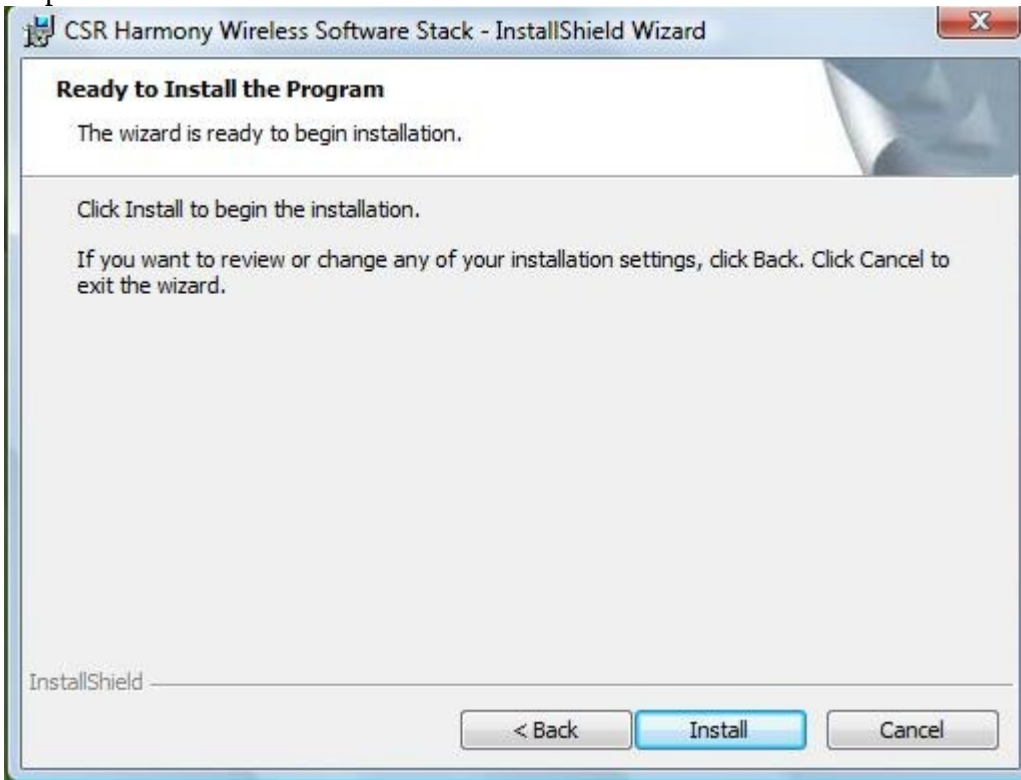
Step 3: Click “Next” to continue. (We recommend that you use the default path)



Step 4: Click “Next” to continue. (We recommend that you use the default settings)



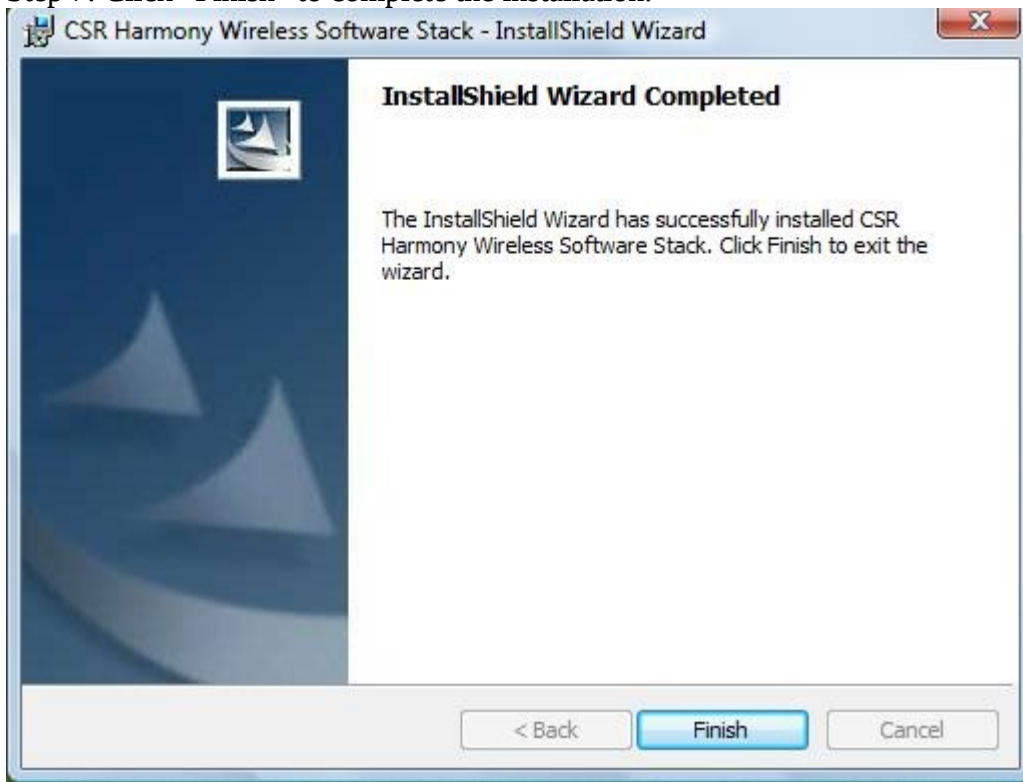
Step 5: Click “Install” to install the Wireless Software Stack.



Step 6: Wait for the files to be automatically installed on your computer.



Step 7: Click “Finish” to complete the installation.



NOTE: This equipment has been tested and found to comply with the limits for a Class B digital device, pursuant to part 15 of the FCC Rules. These limits are designed to provide reasonable protection against harmful interference in a residential installation. This equipment generates, uses and can radiate radio frequency energy and, if not installed and used in accordance with the instructions, may cause harmful interference to radio communications. However, there is no guarantee that interference will not occur in a particular installation. If this equipment does cause harmful interference to radio or television reception, which can be determined by turning the equipment off and on, the user is encouraged to try to correct the interference by one or more of the following measures:

- Reorient or relocate the receiving antenna.
- Increase the separation between the equipment and receiver.
- Connect the equipment into an outlet on a circuit different from that to which the receiver is connected.
- Consult the dealer or an experienced radio/TV technician for help.

This device complies with part 15 of the FCC rules. Operation is subject to the following two conditions:

- (1) this device may not cause harmful interference, and
- (2) this device must accept any interference received, including interference that may cause undesired operation.

Changes or modifications to this unit not expressly approved by the party responsible for compliance could void the user's authority to operate the equipment.