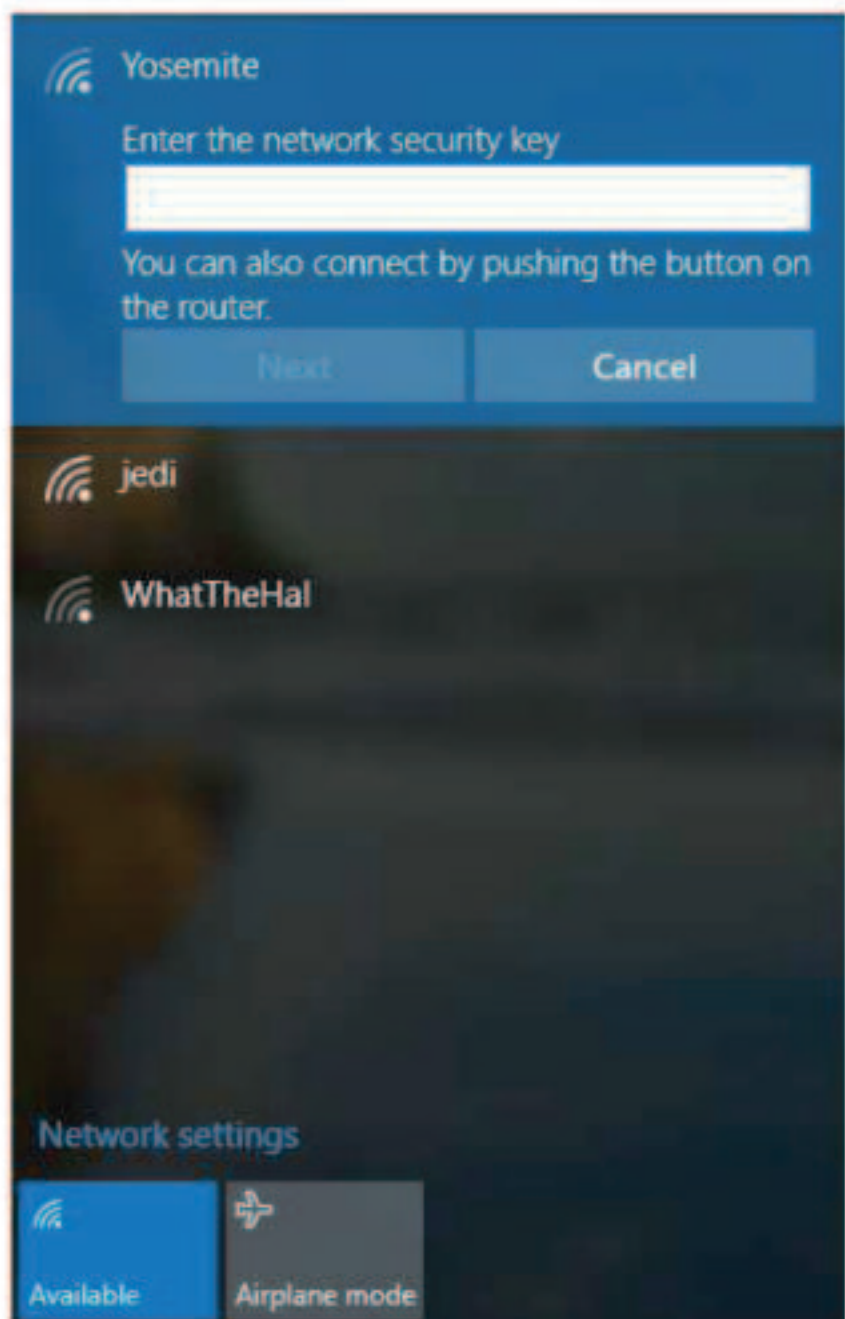
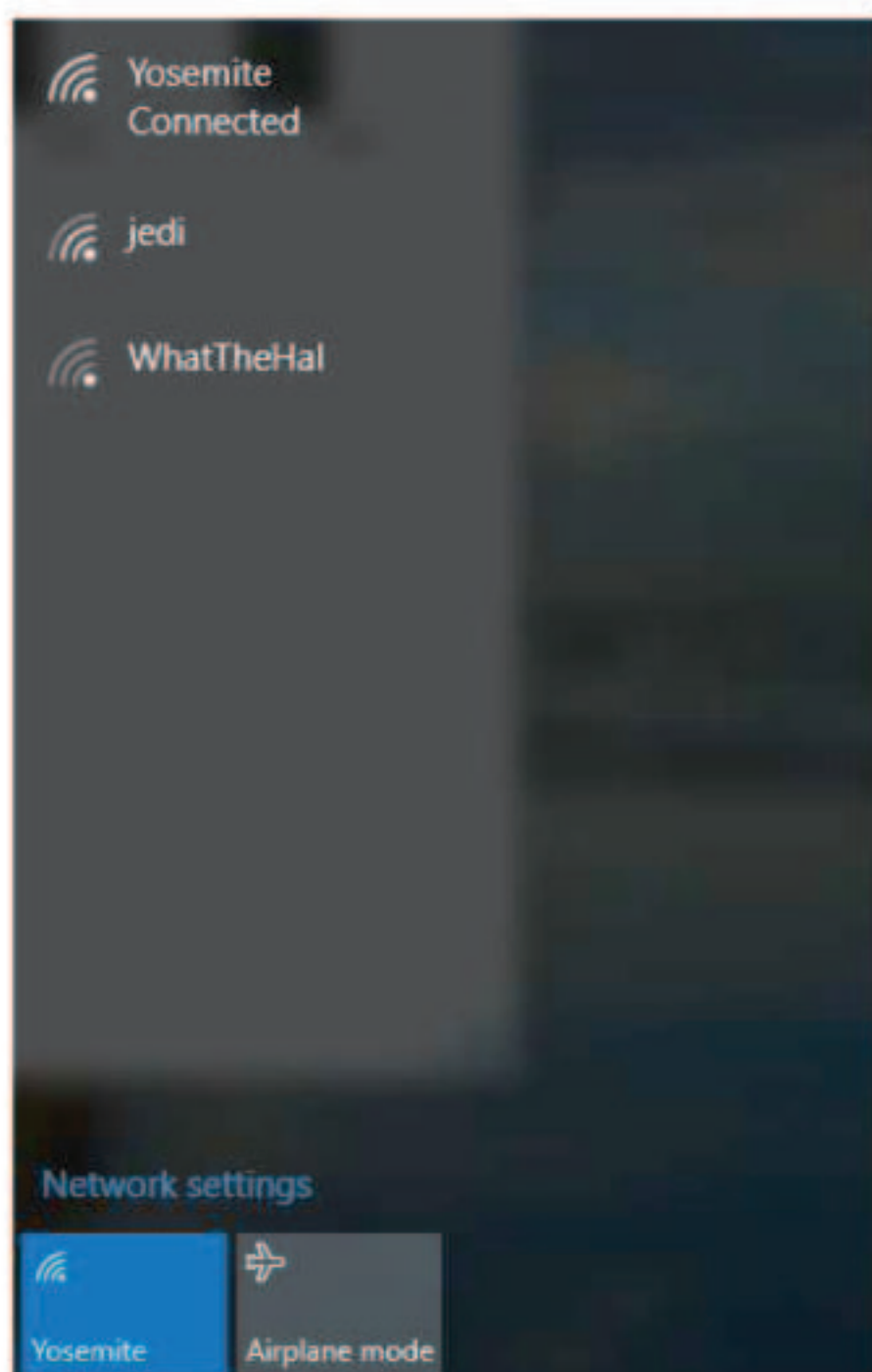


7

3) If your wireless network has configured with wireless security, enter the network password. The following is an example for password protected network.




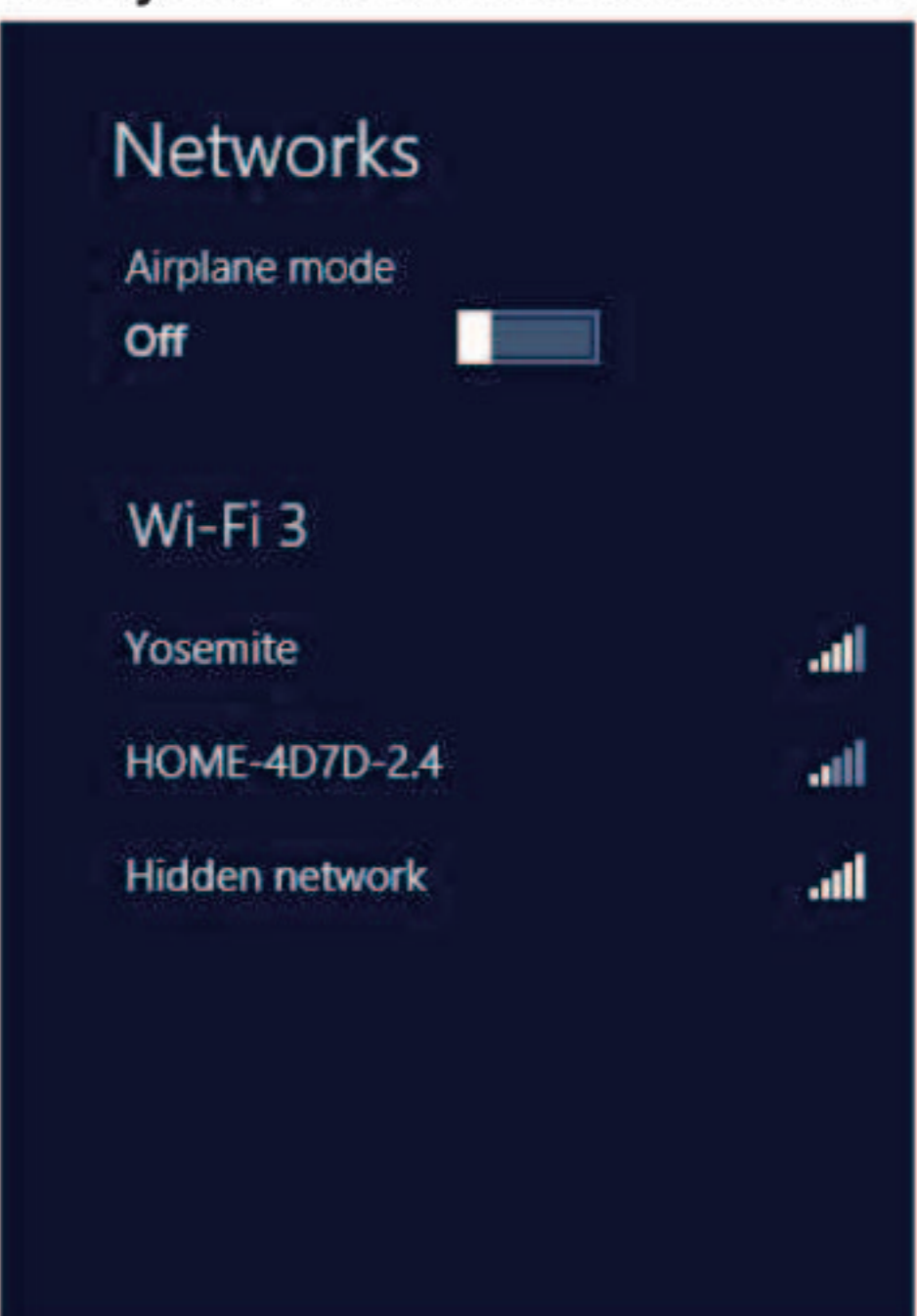
4) Your computer is connected to your wireless network if you see **"Connected"** next to your wireless network.



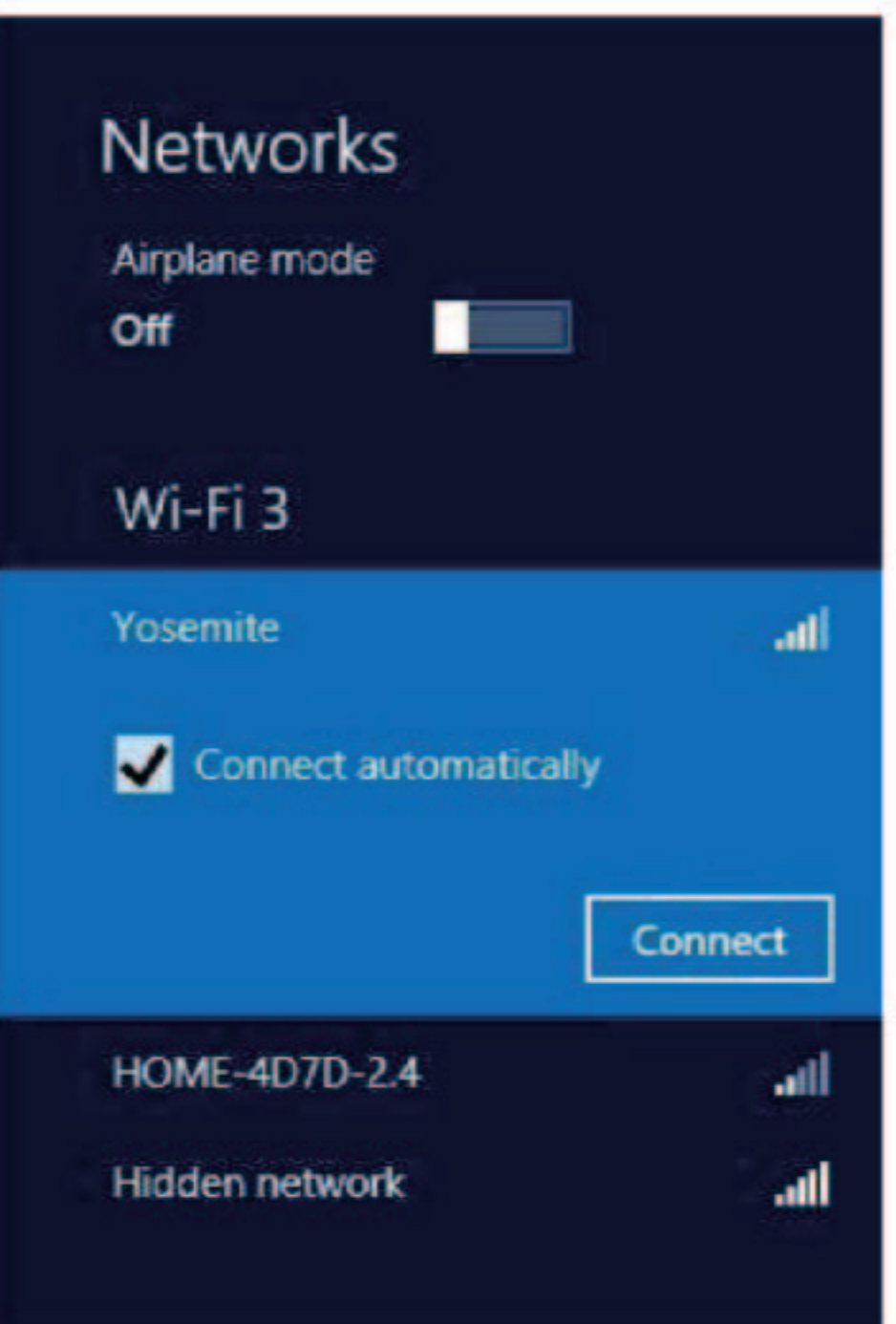
For Windows 8/8.1:

8

1) You move the mouse to the bottom or top right corner of the screen and select the cog icon  labeled Settings. Select the wireless icon and select your wireless network from the list.

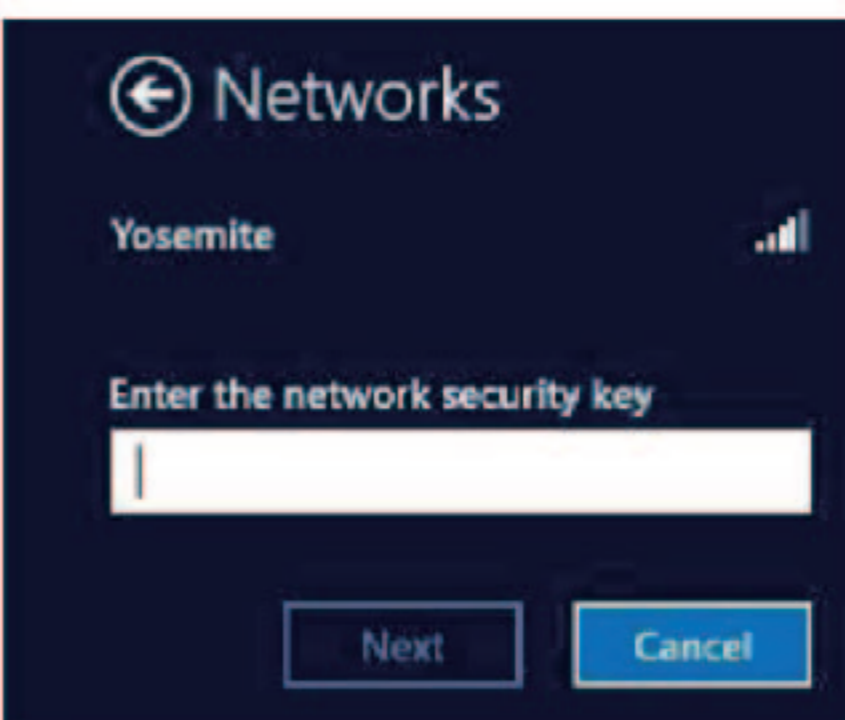


2) Click the **"Connect"** button to connect to your wireless network.

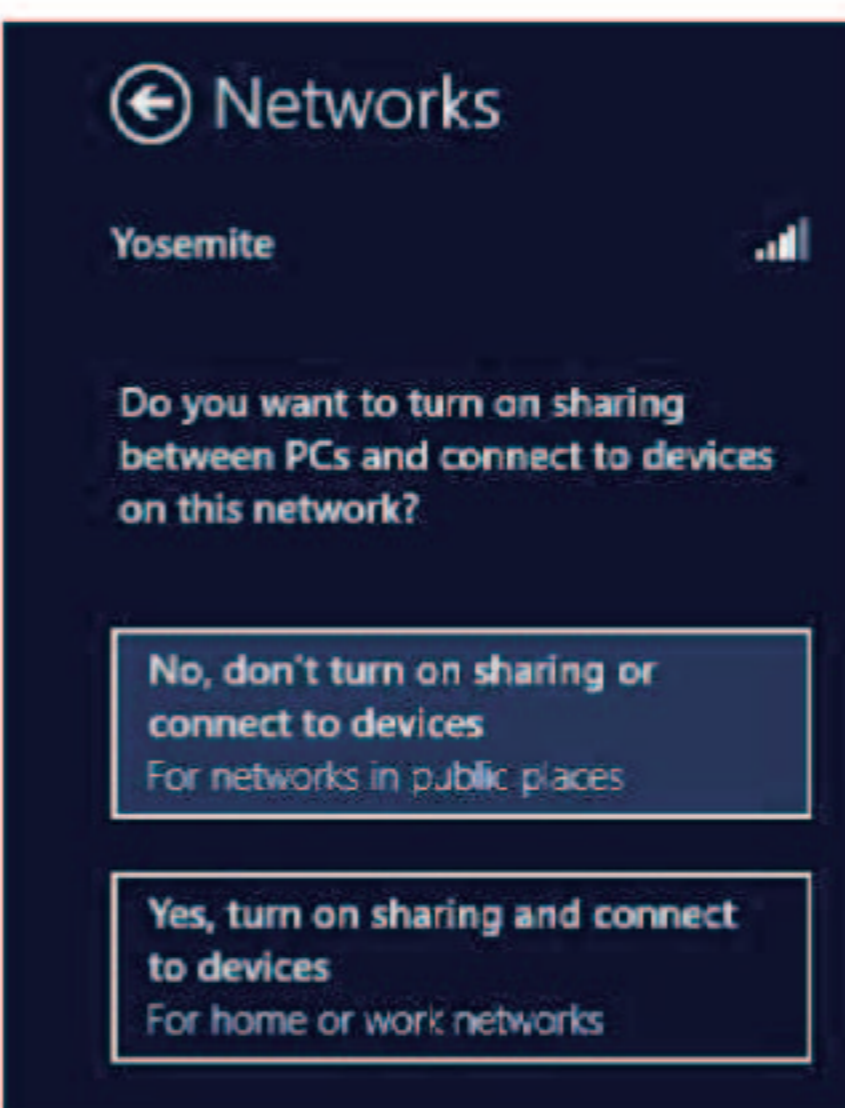


9

3) If your wireless network has configured with wireless security, enter the network password. The following is an example for password protected network.



4) You can select to turn on/off sharing before your computer is connected to your wireless network.



5) Your computer is connected to your wireless network if you see **"Connected"** next to your wireless network.



10

For Windows 7:

1) Click on the wireless icon  in the taskbar in the lower right hand corner of your screen to display the available wireless networks.

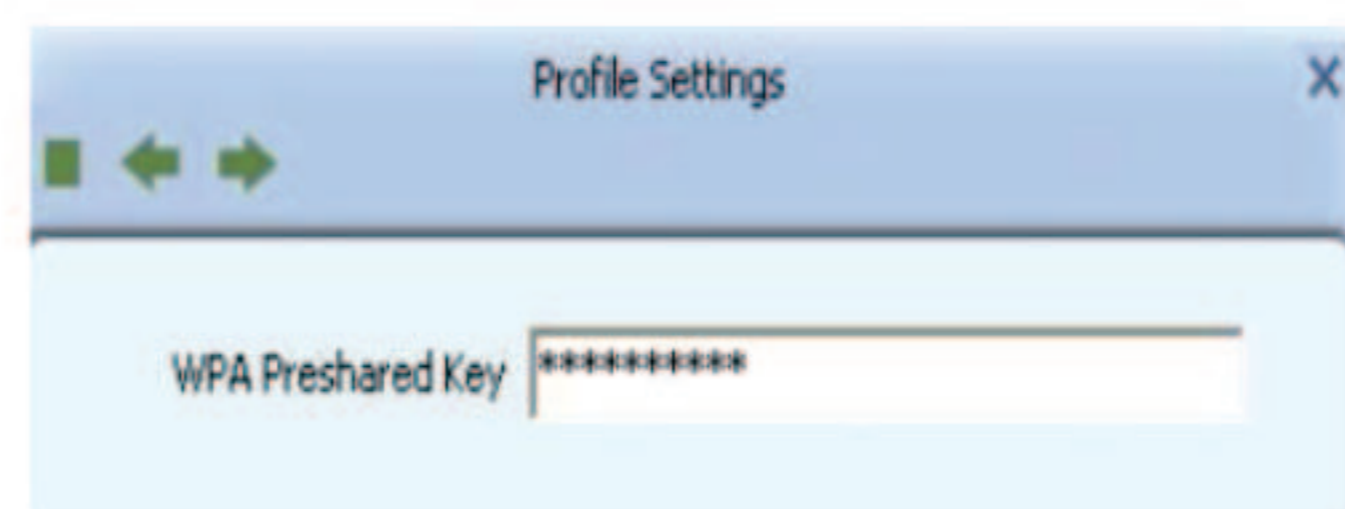


2) Select your wireless network, click **"Connect"** button, and enter the network password to connect to your wireless network.

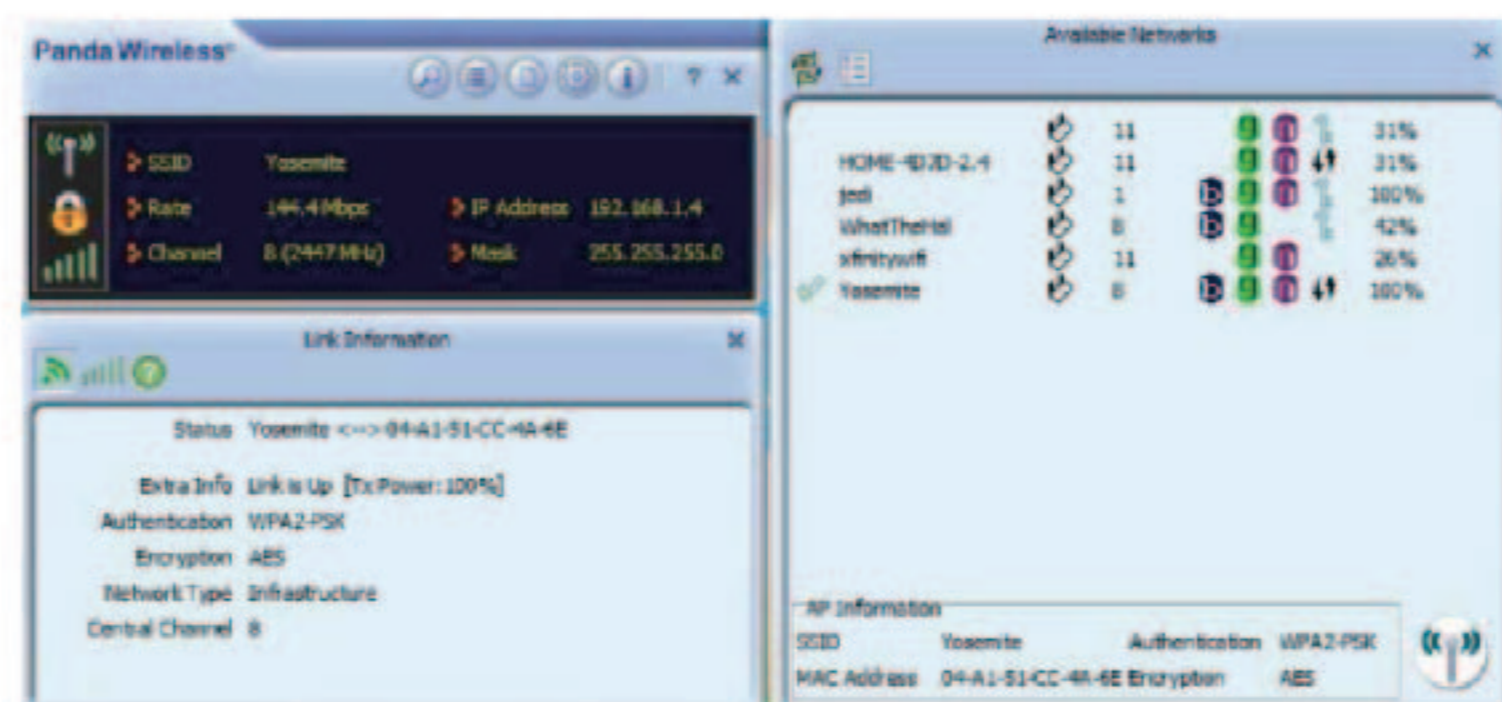


15

f. You enter the network password in the **'WPA Pre shared Key'** field for your wireless network. Click the right arrow to save your settings and connect to the network.



g. You will see a check mark next to your wireless network if your computer is connected to the network successfully.



★ **AP Mode:** You can set up the Panda adapter as an AP, which allows other users to connect to Internet through your computer. Before using this mode, your computer needs to have an existing Internet connection via Ethernet connection or 3G wireless connection.

Right click the wireless icon and select **"Switch to AP Mode"** to launch the Wireless Utility as shown below.



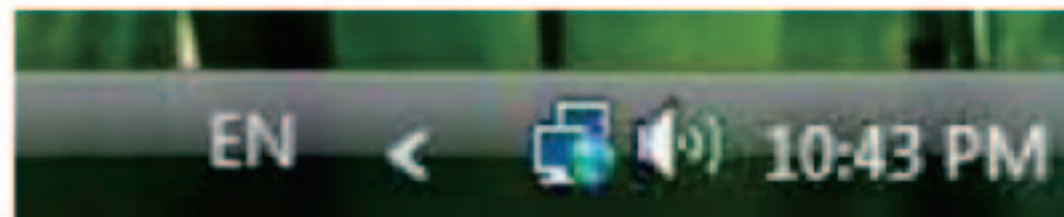
11

3) Your computer is connected to your wireless network if you see **"Connected"** next to your wireless network.

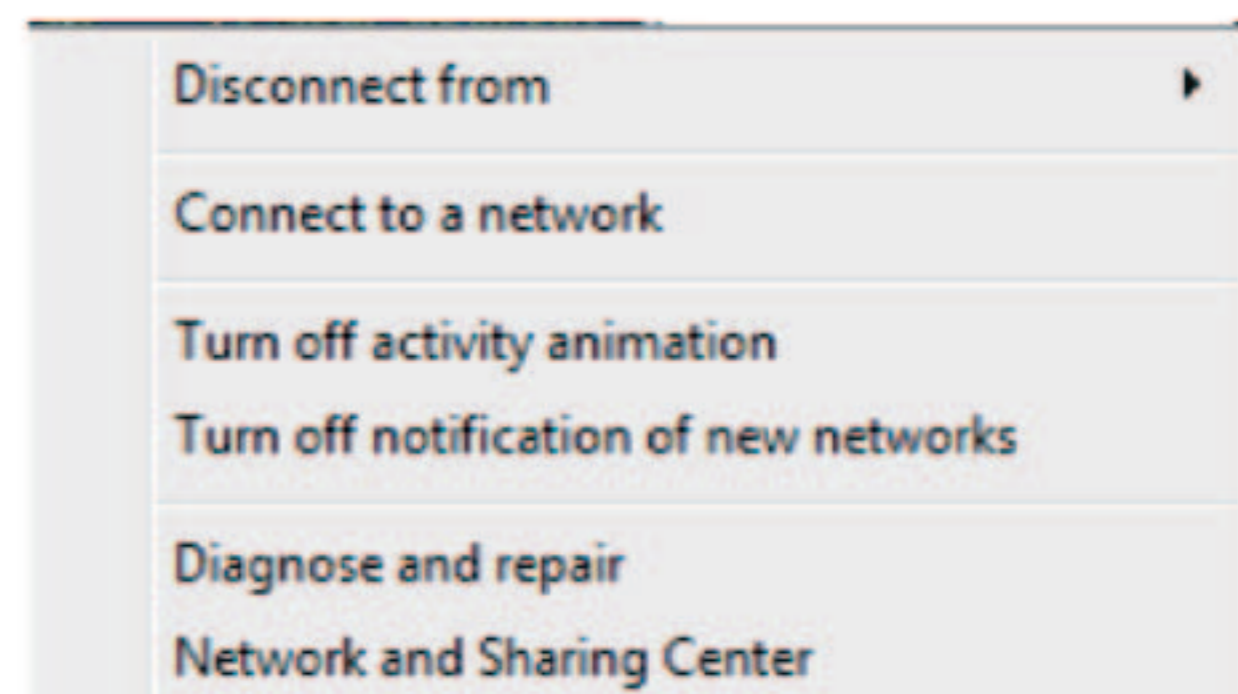


For Windows Vista:

Windows Vista shows a double computer icon in the Windows system tray, which is located in the bottom-right corner of your computer screen.

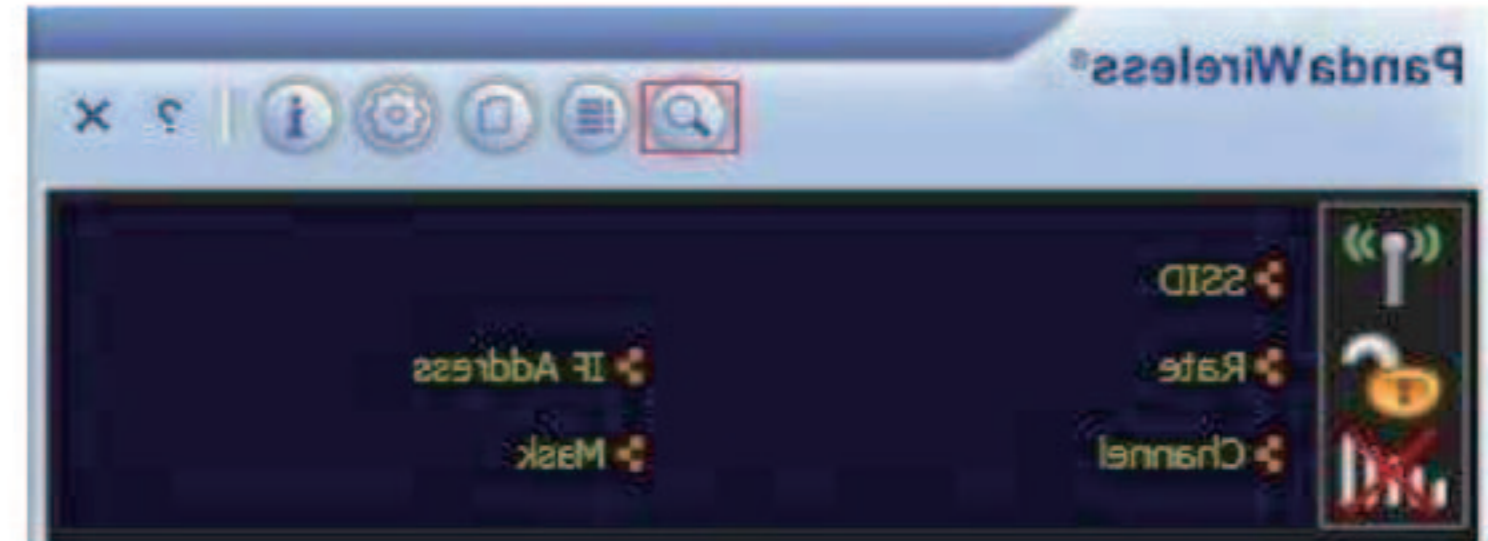


Right click the icon and then select **"Connect to a network"** to launch the Connect to a network window.

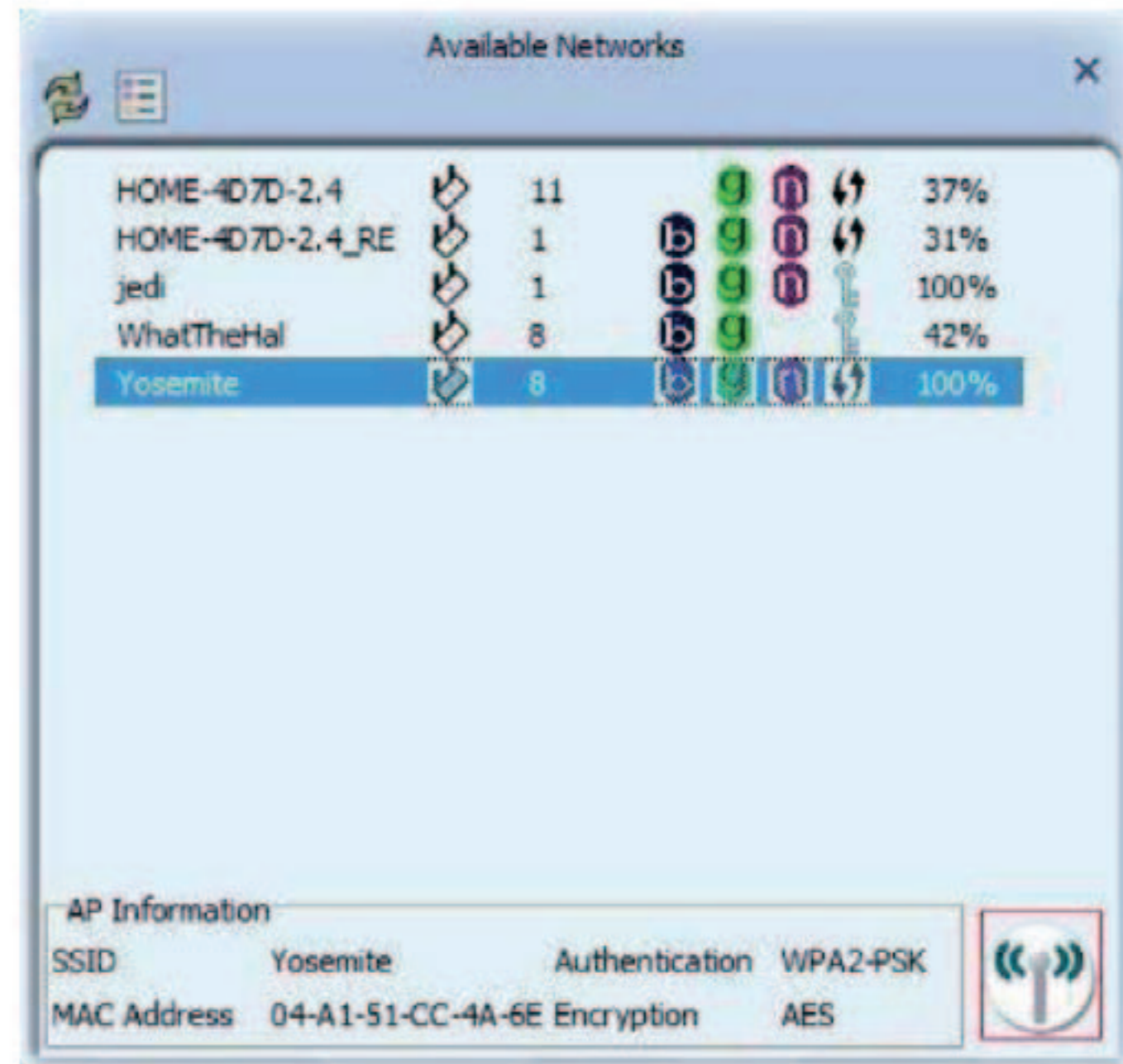


14

b. Click the **"Available Networks"** button to connect to your wireless network.



c. Select your wireless network and then click the **"connect"**  icon



d. The Wireless Utility automatically detects the security settings of the network to which you are connecting in the Profile Settings window. The Profile Settings window shows that WPA2-PSK and AES are detected as shown below. Click the right arrow to go to next screen.



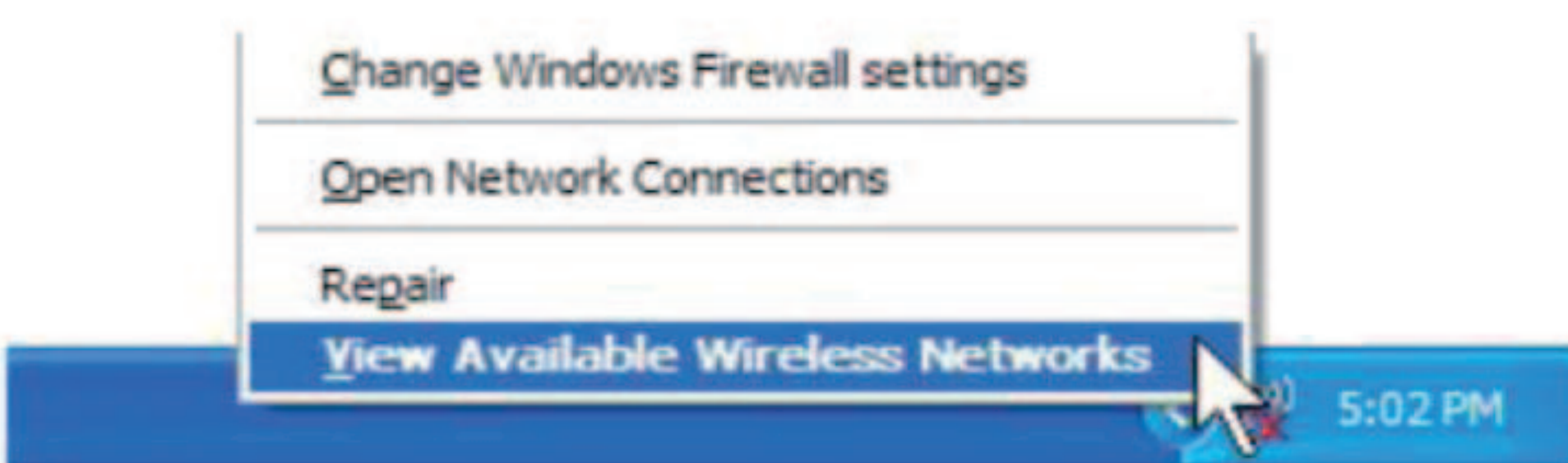
12

For Windows XP:

Windows XP shows a computer icon in the Windows system tray, which locates in the bottom-right corner of your computer screen.



Right click the icon and then select **"View Available Wireless Networks"** to launch the Wireless Network Connection window which displays all the available wireless networks.



Select your wireless network, click **"Connect"** and enter the network password to connect to your wireless network.

**Tips:** If you want to connect to a free/paid WiFi Hotspot in a public area, simply select it from the available wireless networks and then click **"Connect"**. Your default internet browser will be launched automatically—you will be connected to the Internet after you enter the necessary information to access to the WiFi Hotspot.

18

WiFi Hotspot, it's always a good idea to be proactive and to employ security measures of your own.

## 9. Terminology

**Wi-Fi:** Short for "wireless fidelity," a generic label that refers to wireless networks or networking.

**WiFi Hotspot:** A specific geographic location in which an access point provides public wireless broadband network services to mobile visitors through a WLAN through the use of a router connected to a link to an internet service provider.

**WiFi Repeater:** A WiFi repeater takes an existing signal from a wireless router or wireless access point and rebroadcasts it to create a second network.

**Throughput:** The amount of data transmitted in a set amount of time.

**Bandwidth:** the amount of data that can be carried from one point to another in a given time period (usually a second).

**Tx Power:** The transmit power measured at the terminal without antenna be considered. Should the antenna gain be considered, the EIRP value is mentioned.

**Dual Band:** Normally means 802.11b/g/n works in 2.4GHz frequency band or 802.11a/ac/n works in 5GHz frequency band.

17

## 6. Tips for WiFi Users

With a Wi-Fi connection, you can roam about 150 m around the access point (depending on varying environment). So find a spot where you can work without any interruption, then see how much work you can do, such as:

- Easily and quickly receive and transmit files within your local network (you should have no problem to transfer big files).
- Access your email, stream video, surf the web with the same speed as when connected with cable networks.
- Synchronize data between devices.
- Take advantage of wireless printing — send files directly from your laptop PC to a wireless printer over Wi-Fi connection.

## 7. WiFi Power Consumption

Wi-Fi offers greater speed and range than Bluetooth, but it drains your portable device batteries a lot faster than Bluetooth does. In fact, if you use a Wi-Fi connection regularly on your laptop PC, you'll undoubtedly notice that you need to recharge the battery more often. If you need to conserve battery life — on a long trip for example — turn off your Wi-Fi connection when you don't actually need it.

## 8. Wireless Network Security

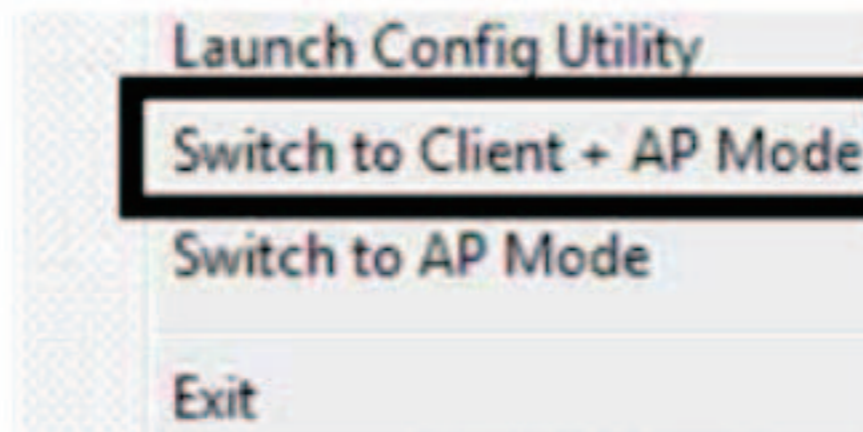
Because wireless networks rely on radio signals to transmit data, they are not as secure as wire network. Wireless networks are susceptible to viruses and breaches like eavesdropping and need to be protected in order to be secure.

There are many security measures to safeguard wireless networks, protect the data, and keep unauthorized users out of WiFi Hotspots. It may be found that some paid WiFi Hotspots administered by service providers offer some level of security. However, when using a

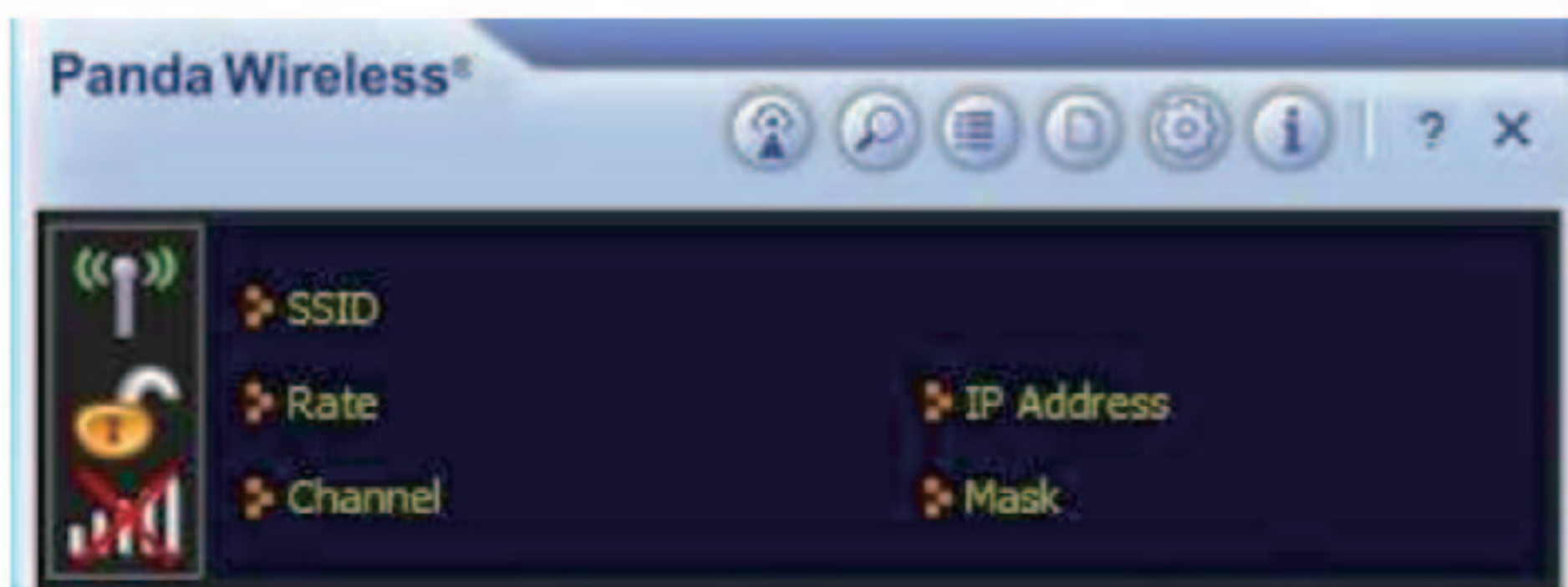
16

The Wireless Utility includes **"AP Setup"**, **"Access Control List"**, **"Connected Devices"**, **"About"** and **"Help"** buttons in the upper right hand corner. Click the **"AP Setup"** button to create a new wireless network.

★ **Client + AP Mode:** You can set up your computer as a WiFi repeater via the Panda adapter in this mode. It is only available in Windows 7 or higher.



Right click on the wireless icon and select **"Switch to Client + AP Mode"** to launch the Wireless Utility.



The Wireless Utility includes **"AP Setup"**, **"Available Networks"**, **"Link Info"**, **"Profile Settings"**, **"Advanced"**, **"About"** and **"Help"** buttons in the upper right hand corner.

In this mode, your computer is connected to a wireless network which is connected to the internet and broadcasts wireless signals to create another wireless network simultaneously. All your wireless devices can share the wireless internet connection to get on the internet via the Panda adapter.

## FCC Statement

This equipment has been tested and found to comply with the limits for a Class B digital device, pursuant to part 15 of the FCC Rules. These limits are designed to provide reasonable protection against harmful interference in a residential installation. This equipment generates, uses and can radiate radio frequency energy and, if not installed and used in accordance with the instructions, may cause harmful interference to radio communications. However, there is no guarantee that interference will not occur in a particular installation. If this equipment does cause harmful interference to radio or television reception, which can be determined by turning the equipment off and on, the user is encouraged to try to correct the interference by one or more of the following measures:

- Reorient or relocate the receiving antenna.
- Increase the separation between the equipment and receiver.
- Connect the equipment into an outlet on a circuit different from that to which the receiver is connected.
- Consult the dealer or an experienced radio/TV technician for help.

Caution: Any changes or modifications to this device not explicitly approved by manufacturer could void your authority to operate this equipment.

This device complies with part 15 of the FCC Rules. Operation is subject to the following two conditions: (1) This device may not cause harmful interference, and (2) this device must accept any interference received, including interference that may cause undesired operation.

### Specific Absorption Rate (SAR) information:

This Communicator meets the government's requirements for exposure to radio waves. The guidelines are based on standards that were developed by independent scientific organizations through periodic and thorough evaluation of scientific studies. The standards include a substantial safety margin designed to assure the safety of all persons regardless of age or health. FCC RF Exposure Information and Statement the SAR limit of USA (FCC) is 1.6 W/kg averaged over one gram of tissue. Device types: Communicator has also been tested against this SAR limit. This device was tested for typical body-worn operations with the back of the dongle kept 5mm and 10mm from the body. To maintain compliance with FCC RF exposure requirements, use accessories that maintain an 0mm separation distance between the user's body and the back of the phone. The use of belt clips, holsters and similar accessories should not contain metallic components in its assembly. The use of accessories that do not satisfy these requirements may not comply with FCC RF exposure requirements, and should be avoided.