

VERIZON WIRELESS VZACCESS MANAGER

PX-100 *User's Manual*



CONTENTS

| | |
|---|----|
| 1. BEFORE USING PC5740 | 1 |
| 1.1 About this User's Manual | 1 |
| 1.2 Product Overview | 1 |
| 1.3 What's Inside the Product Package | 1 |
| 1.4 Introduction to Verizon Wireless PC5740 PC Card | 1 |
| 1.5 Product Features | 2 |
| 1.6 Product handling | 3 |
| 1.7 Configuration | 3 |
| 2. INSTALLING PC5740 | 4 |
| 2.1 Precautions | 4 |
| 2.2 Recommended System Requirements | 4 |
| 2.3 Installing Software | 5 |
| 2.3.1 Installation | 5 |
| 2.3.2 Warnings | 5 |
| 2.3.3 Notes | 5 |
| 2.3.4 Firmware upgrade | 6 |
| 2.3.5 Unplugging or ejecting the card | 6 |
| 3. REGULATORY AND SAFETY INFORMATION | 8 |
| 3.1 Regulatory notices | 8 |
| 3.2 Operating Conditions | 8 |
| 3.3 Warnings and Cautions | 8 |
| 3.4 Safety precautions | 9 |
| 4. LIMITED WARRANTY | 11 |

CONTENTS

1. BEFORE USING PC5740

1.1 About this User's Manual

You will find all the information you need to install and use the PC5740 in this user's manual. Before using PC5740, you must properly install the PC5740 by closely following the installation instructions.

1.1.1 Instructions

- Install the PC5740 software before inserting the PC5740 card into your laptop. The installation software is included in the product package. Insert the CD into your CD-ROM drive. Installation may take a few minutes.
- It is highly recommended that you read the safety precautions described in this manual before using the PC5740.

1.2 Product Overview

Thank you for purchasing Verizon Wireless PC5740 PC Card. The PC5740 is a 3G wireless card that enables high-speed wireless communication from your laptop. PC5740 is simple to install and use.

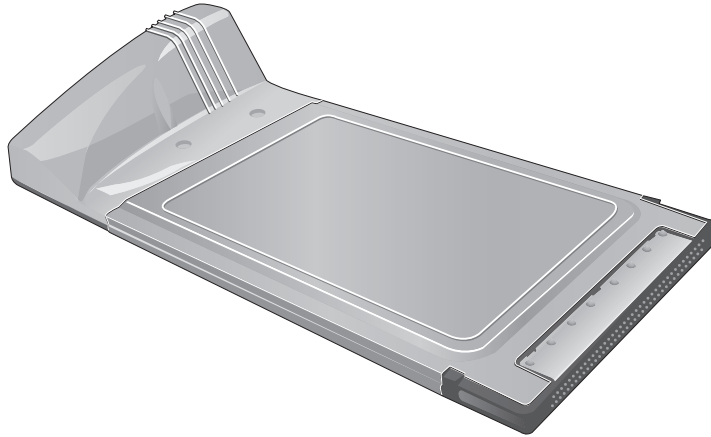
1.3 What's Inside the Product Package

Following items are included in the product package. If any of the items listed below is missing, please contact the retail location where you purchased the product.

- PC5740 Wireless PC Card Modem
- Installation CD that contains software and this user's manual

1.4 Introduction to Verizon Wireless PC5740 PC Card

The Verizon Wireless PC5740 is designed for type II PC card slot, which is available in most laptop models. PC5740 can be used to access the Internet, your company's intranet, or you can use it to send and receive email. It is extremely useful when you are away from the office, on the road, or where ever a wireline Internet access is not readily available.



1.5 Product Features

- Power management: PC5740 utilizes power management and system overhead reduction functions provided by the standard 32-bit CardBus electrical interface for maximum power savings.
- Antenna design: Efficient, innovative design optimizes data transfer rate and sensitivity to network signals.
- Type II PCMCIA format that supports CardBus I/O interface.
- Supports North American PCS (1900 MHz) and Cellular (800 MHz) bands.
- Utilizes QUALCOMM MSM6500 chip set.
- Supports 3G network technologies.
- Optimized data rate: Maximum 2 Mbps receiving speed and maximum 144 kbps sending speed.
- Supports Win98SE, ME, 2000 and XP systems with installed host software and driver.
- Provides Verizon Wireless BroadbandAccess and NationalAccess network service.

1.6 Product handling

- 1) Do not put any adhesive label on the PC5740 card. It may leave a sticky residue that can cause problems inside the laptop PC card slot.
- 2) PC5740 card should easily slide into the PC card slot.
Do not force the PC5740 into the slot as it may cause damage to the card and/or the slot.
- 3) Keep PC5740 in a dry and clean place.
(Storage temperature: - 30° to 65°C [86° to 149°F]). Keep your card away from liquids, dust and excessive heat.

1.7 Configuration

To use the PC5740, you should install the software included in the installation CD and configure the PC5740 card. See the next section for more information on software installation and PC card configuration.

2. INSTALLING PC5740

2.1 Precautions

- 1) Do not insert the PC5740 before installing the software in laptop computer. When you complete the software installation, the system will prompt you to insert the PC5740 into the Type II PC card slot.
- 2) Once the card has been inserted into the laptop, do not remove it from your laptop without first completing the unplugging/ejection process. (See page 6 for more information on this process.)

2.2 Recommended System Requirements

To successfully install and use the PC5740 card in your laptop, the following system specifications are required.

| Item | Required Specification |
|---------------------------|---|
| Operating system | Windows® 98SE / Windows® Me / Windows® XP / Windows® 2000 |
| Card slots | Type II PC Card slot (CardBus) |
| Processor | Pentium 150MHz or faster |
| Disk drive | CD-ROM |
| Memory | 32 MB |
| Disk space | 14MB |
| Dial-up networking | DUN bound to TCP/IP |

* PC5740 is not designed for hand-held or Pocket PC. SMS or voice service is not also supported.

2.3 Installing Software

2.3.1 Installation

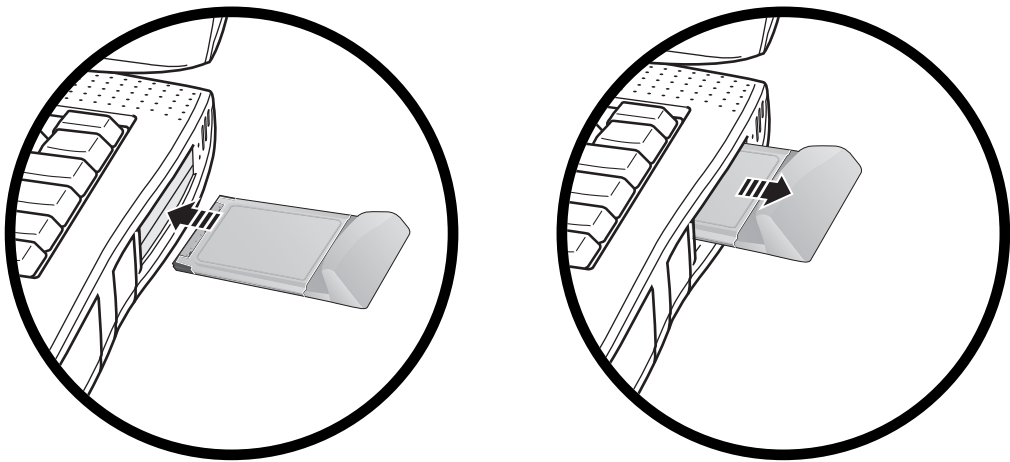
- Insert the PC5740 into your laptop PC card slot. The label side should be facing up.
If you use the product in any other configuration may cause it to exceed FCC RF exposure limit.
- If the card is inserted properly, the Windows operation system will automatically detect the card.

2.3.2 Warnings

- Make sure to complete the unplugging/ejection process before removing the PC5740. If you remove the card improperly, the product may be damaged.
- Before inserting the PC5740 into your laptop's PC Card slot, remove the Installation CD from the CD-ROM drive.

2.3.3 Notes

- If you have inserted the card properly, Windows will inform you of the new hardware. Wait for a while until Windows completes "Found New Hardware" task. In Windows 98SE/2000/ME, several windows similar to "Found New Hardware" window can appear and disappear automatically. In Windows XP, several tool tips similar to the "Found New Hardware" function will appear and disappear in the system tray automatically. Once hardware detection is complete, you will be prompted to start activation.
- You hear a short beep sound each time you insert or remove the PC5740, which is quite normal. It is an audible notification that your laptop recognizes the new hardware.



2.3.4 Firmware upgrade

- Firmware is the software that is written to the PC card. When you insert the PC card, the application decides whether the firmware version is up-to-date with the version of software you have installed. If the firmware is out-of-date, the application prompts, “The firmware on your PC Card is currently out of date. Would you like to upgrade the firmware at this time (recommended)?” Select “Yes” to launch the upgrade or “No” if you do not wish to upgrade the firmware.

If you don't upgrade the firmware, the application may not function reliably. You must not eject the card while firmware upgrade is in progress. This can cause the card can break down.

2.3.5 Unplugging or ejecting the card

- Make sure to complete the unplug/eject process before removing the PC5740. If you remove the card improperly, the product can become damaged.
- Double click the Unplug/Eject Hardware icon in the system tray.



Windows 2000 & ME

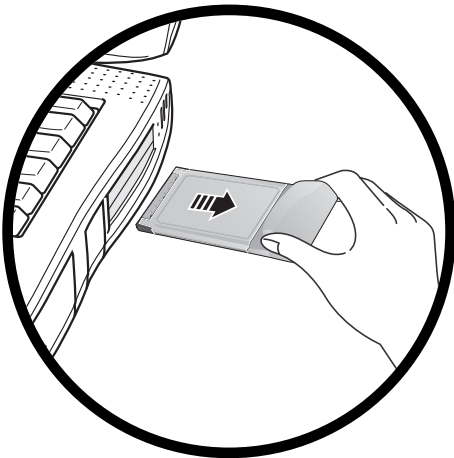


Windows 98

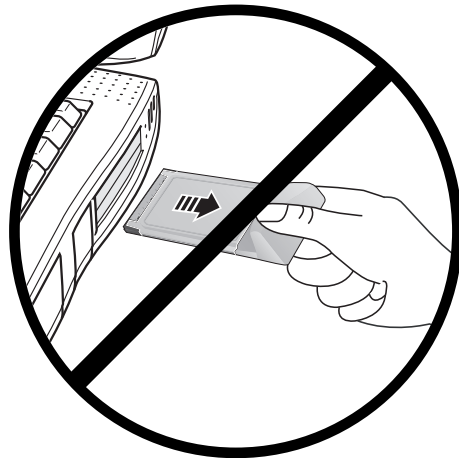


Windows XP

- Select “NEC PCI to USB Open Host Controller” (Windows XP) from the “Safely Remove Hardware” window. Then, click STOP.
- Select “NEC PCI to USB Open Host Controller” (Windows XP) from the “Stop a Hardware drive” window and click OK.
- The “Safe to Remove Hardware” message will appear. Click OK.
- Now, you can remove the PC5740 from your laptop. When removing the PC5740, always grip the either sides of the card rather than the top and bottom of the card. Gripping the top and bottom of the cards and pulling the card and put pressure on the antenna and cause damage. Use the Card Ejector tool on your laptop, if it is available.



When Inserting and removing the PC Card, grip both sides.



Do not handle or remove the PC Card by pulling on the antenna.

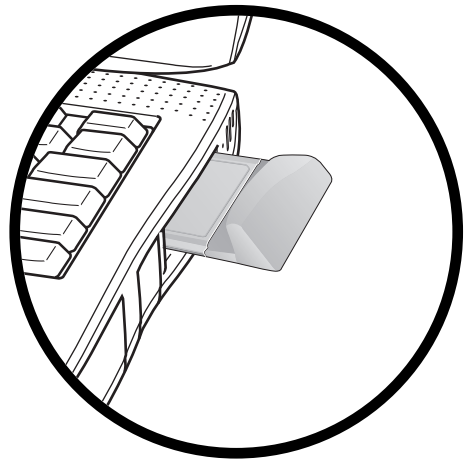
3. REGULATORY AND SAFETY INFORMATION

3.1 Regulatory notices

PC5740 complies with Parts 15, 22, and 24 of the FCC rules. It has been tested with the typical laptop computer with the side loading PCMCIA bay. This PC card must not be co-located or operated in conjunction with any other antenna or transmitter. If you use this PC card in any other configuration, the FCC RF Exposure compliance limit can be exceeded.

3.2 Operating Conditions

- 1) This device may not cause harmful interference, and this device must accept any interference received, including interference that may cause undesirable operations.
- 2) The manufacturer stipulates that the antenna should be more than 1.5 cm (0.60") from by-standers and 1.0cm (0.39") from the user.



3.3 Warnings and Cautions

- 1) Modifying or changing this PC card without express authorization can nullify compliance with RF exposure guidelines.
- 2) This PC card has been tested and found to comply with the limits pursuant to Part 15, 22, and 24 of the FCC Rules. These limits are designed to provide reasonable protection against harmful interference when appropriately installed. This PC card generates, uses, and can radiate radio frequency and, if not installed and used according to the instructions provided, it may cause harmful interference to radio communication. However, there is no guarantee that interference will not occur in any particular installation.

- 3) If this PC card does cause harmful interference with radio or television signals (determine this by turning the PC card off and on), attempt to correct the interference by trying one or more of the following:
- Reorient or relocate the antenna.
 - Increase the separation between the PC card and receiver.
 - Connect the PC card into an outlet on a circuit different from that to which the receiver is connected.
 - Consult the dealer or an experienced radio/TV technician for help.
- 4) This PC card does not exceed the Class B limits for radio noise emissions from digital apparatus as set out in the interference causing equipment standard entitled “Digital Apparatus”, ICES-003 of the Department of Communications.
- 5) If you have purchased this product under a United States Government contract, it shall be subject to restrictions as set forth in subparagraph (C)(1)(ii) of Defense Federal Acquisitions Regulations (DFARs) Section 252.227-7013 for Department of Defense contracts, and as set forth in Federal Acquisitions Regulations (FARs) Section 52.227-19 for civilian agency contracts or any successor regulations. If further government regulations apply, it is your responsibility to ensure compliance with such regulations.

3.4 Safety precautions

- 1) Data transmission and reception cannot be guaranteed because of the nature of wireless communications. Data can be delayed, corrupted or lost during transmission. Even though it is quite rare that significant data delay or loss occurs if the PC card is used in a normal manner, this PC card should not be used in cases that data transmission or reception failure could result in damage of any kind to the user or another party, including but not limited to personal injury, death or loss of personal property. Audiovox bears no responsibility for damages or losses of any kind resulting from delays or errors in data transmission using the PC card, or for failure of the PC card to transmit or receive such data.

- 2) Do not use this PC card in areas where blasting is in progress, where explosive atmospheres may be present, near medical equipment, life support equipment, or any equipment which may be susceptible to any form of radio interference. Turn off this PC card in these areas, since it can transmit signals that could interfere with this equipment.
- 3) Do not use this PC card in any aircraft whether the aircraft is on the ground or in flight. Make sure to turn off this PC card in aircraft. If used in aircraft, it can transmit signals that could interfere with various aircraft systems.
- 4) Do not use this PC card while driving a car, since it can distract driver's driving. In some area, using the communication device while driving a car is illegal.

4. LIMITED WARRANTY

- 1) Audiovox (the “Company”) warrants to the original retail purchaser of this PC card that should this product or any part thereof during normal consumer usage and conditions, be proven defective in material or workmanship that results in product failure within the first twelve (12) month period from the date of purchase, such defect(s) will be repaired or replaced (with new or rebuilt parts) at the Company’s option, without charge for parts or labor directly related to the defect(s).
- 2) This Warranty extends only to consumers who purchase the product in the United States or Canada. This Warranty cannot be transferred or assigned to the third party.
- 3) This Warranty shall not be applicable to;
 - Product subjected to abnormal use or conditions, accident, mishandling, neglect, unauthorized alteration, misuse, improper installation or repair or improper storage;
 - Product whose mechanical serial number or electronic serial number has been removed, altered or defaced;
 - Damage from exposure to moisture, humidity, excessive temperatures or extreme environmental conditions;
 - Damage resulting from connection to, or use of any accessory or other product not approved or authorized by the Company;
 - Defects in appearance, cosmetic, decorative or structural items such as framing and non-operative parts;
 - Damage from external causes such as fire, flooding, dirt, sand, weather conditions, battery leakage, blown fuse, theft or improper usage of any electrical source.

- 4) The Company disclaims liability for removal or reinstallation of the product, for geographic coverage, for inadequate signal reception by the antenna or for communications range or operation of the cellular system as a whole. To obtain repairs or replacement within the terms of this Warranty, the product should be delivered with proof of Warranty coverage (e.g. dated bill of sale), the consumer's return address, daytime phone number and/or fax number and complete description of the problem, transportation prepaid, to the Company at the address shown below or to the place of purchase for repair or replacement processing. In addition, for reference to an authorized Warranty station in your area, you may telephone in the United States (800) 229-1235.

- 5) The extent of the Company's liability under this Warranty is limited to the repair or replacement provided above and, in no event, shall the Company's liability exceed the purchase price paid by purchaser or the product.
Any implied warranties, including any implied warranty of merchantability or fitness for a particular purpose, shall be limited to the duration of this written Warranty. Any action for breach of any warranty must be brought within a period of 18 months from date of original purchase. In no case shall the Company be liable for any special consequential or incidental damages for breach of this or any other warranty, express or implied, what so ever. The Company shall not be liable for the delay in rendering service under this Warranty or loss of use during the time the product is being repair or replaced.

- 6) No person or representative is authorized to assume for the Company any liability other than expressed herein in connection with the sale of this product.

- 7) Some states or provinces do not allow limitations on how long an implied warranty lasts or the exclusion or limitation of incidental or consequential damage so the above limitation or exclusions may not apply to you. This Warranty gives you specific legal rights, and you may also have other rights which vary from state to state or province to province.

IN USA: **AUDIOVOX COMMUNICATIONS CORP.**
555 Wireless Blvd.
Hauppauge, NY 11788
(800) 229-1235

IN CANADA: **AUDIOVOX COMMUNICATIONS CANADA CO.**
5155 Spectrum Way, Unit #5
Mississauga, Ontario L4W 5A1
(800) 465-9672

Safety Information

1 . SAFETY INFORMATION FOR FIXED WIRELESS TERMINALS

.POTENTIALLY EXPLOSIVE ATMOSPHERES

Turn your phone OFF when in any area with a potentially explosive atmosphere and obey all signs and instructions. Sparks in such areas could cause an explosion or fire resulting in bodily injury or even death.

INTERFERENCE TO MEDICAL DEVICES

Certain electronic equipment may be shielded against RF signal from your wireless phone. (pacemakers, Hearing Aids, and so on) Turn your phone OFF in health care facilities when any regulations posted in these areas instruct you to do so.

RF signals may affect improperly installed or inadequately shielded electronic system in motor vehicles.

.EXPOSURE TO RF ENERGY

Use only the supplied or an approved replacement antenna.

Do not touch the antenna unnecessarily when the phone is in use.

Do not move the antenna close to, or touching any exposed part of the body when making a call.

SAR INFORMATION

THIS MODEL PHONE MEETS THE GOVERNMENT'S
REQUIREMENTS FOR EXPOSURE TO RADIO WAVES.

Your PC wireless card is a radio transmitter and receiver. It is designed and manufactured not to exceed the emission limits for exposure to radiofrequency (RF) energy set by the Federal Communications Commission of the U.S. Government. These limits are part of comprehensive guidelines and establish permitted levels of RF energy for the general population. The guidelines are based on standards that were developed by independent scientific organizations through periodic and thorough evaluation of scientific studies. The standards include a substantial safety margin designed to assure the safety of all persons, regardless of age and health. The exposure standard for wireless mobile phones employs a unit of measurement known as the Specific Absorption Rate, or SAR. The SAR limit set by the FCC is 1.6 W/kg. * Tests for SAR are conducted with the phone transmitting at its highest certified power level in all tested frequency bands. Although the SAR is determined at the highest certified power level, the actual SAR level of the phone while operating can be well below the maximum value. This is because the phone is designed to operate at multiple power levels so as to use only the power required to reach the network. In general, the closer you are to a wireless base station antenna, the lower the power output. Before a phone model is available for sale to the public, it must be tested and certified to the FCC that it does not exceed the limit established by the government adopted requirement for safe exposure. The tests are performed in positions and locations (e.g., at the ear and worn on the body) as required by the FCC for each model. The highest SAR value for this model when tested for use at the when worn on the body, as described in this user guide, is 1.26W/Kg. (Body-worn measurements differ among models, depending upon available accessories and FCC requirements). While there may be differences between the SAR levels of various and at various positions, they all meet the government requirement for safe exposure. The FCC has granted an Equipment Authorization for this model with all reported SAR levels evaluated as in compliance with the FCC RF exposure guidelines. SAR information on this model is on file with the FCC and can be found under the Display Grant section of <http://www.fcc.gov/oet/fccid> after searching on FCC ID: PP4PX-100.

Additional information on Specific Absorption Rates (SAR) can be found on the Cellular Telecommunications Industry Association (CTIA) web-site at <http://www.wow-com.com>.

* In the United States and Canada, the SAR limit for mobile phones used by the public is 1.6 watts/kg (W/kg) averaged over one gram of tissue. The standard incorporates a sub-stantial margin of safety to give additional protection for the public and to account for any variations in measurements.

SAFETY INFORMATION FOR RF EXPOSURE

Body worn operation

This device was tested for typical body-worn operations with the back of the PC-CARD kept 20mm. from the body. To maintain compliance with FCC RF exposure requirements, use only belt-clips, holsters or similar accessories that maintain a 20mm. separation distance between the user's body and the back of the PC-CARD, including the antenna. The use of belt-clips, holsters and similar accessories should not contain metallic components in its assembly. The use of accessories that do not satisfy these requirements may not comply with FCC RF exposure requirements, and should be avoided.

FCC Compliance Information

This device complies with Part 15 of FCC Rules.

Operation is subject to the following two conditions:

- (1) This device may not cause harmful interference, and
- (2) This device must accept any interference received.

Including interference that may cause undesired operation.

U.S.A.

U.S.FEDERAL COMMUNICATIONS COMMISSION

RADIO FREQUENCY INTERFERENCE STATEMENT

INFORMATION TO THE USER

NOTE : This equipment has been tested and found to comply with the limits for a Class B digital device pursuant to Part 15 of the FCC Rules.

These limits are designed to provide reasonable protection against harmful Interference in a residential installation This equipment generates, uses, and can radiate radio frequency energy and, if Not installed and used in accordance with the instructions, may cause harmful Interference to radio communications. However, there is no guarantee that interference will not occur in a particular Installation. If this equipment does cause harmful interference to radio or television reception, which can be determined by turning the equipment off and on, the user is encouraged to try to correct the interference by one or more of the following measures:

- Reorient or relocate the receiving antenna.
- Increase the separation between the equipment and receiver.
- Connect the equipment into an outlet of a circuit different from that to which the receiver is connected.
- Consult the dealer or an experienced radio/TV technician for assistance.

Changes or modification not expressly approved by the party responsible for Compliance could void the user's authority to operate the equipment. Connecting of peripherals requires the use of grounded shielded signal cables.