

# Wireless Bluetooth Flexible keyboard User's Guide

## Package Contents

- A wireless Bluetooth keyboard.
- A copy of manual.
- A USB cable( Just for charging)
- A CD.

## Main Features

### Use Broadcom 2042 Chipset with wireless Bluetooth 2.0 interface

Come with particular power managing software, indicates the power capacity in Microsoft Windows System automatically

**The ultrathin design offers an easy typing without stress of your fingers and wrists.**

The silent design avoid disturbance for other's rest . (Especially suitable for dormitory)

The keyboard is antipollution, **acid & alkali resistant**, dustproof and waterproof but only mean the part of silicone.

Use the Bluetooth industry leading software solutions, WIDCOMM BTW (Microsoft officially designated software) Bluetooth software.

Supports both computer and commercial mobile phone, bring you great convenience in working.

Workable environment: -20°C to 55°C

Humidity:20%-50%

Use the built - in Li - ion battery design, saving due to frequent changing battery consumption.

## Specification Parameter

**Executive Standard: Bluetooth V2.0**

Operation distance: 10m

**modulation system: 2.4G FHSS**

**Transmission power: Class 2**

Working volt: 1.9-3.3V

working current: <10mA

**standby current:<2mA**

dormancy Current

Size: **long**315mm\***wide**113mm\* **high** 11mm

## System Requirements

**Operation of Computer system requirements:**

Work with Windows 98, ME, 2000,XP,Vista , WIN7 , and Apple operating system.

**Operation of mobile system requirements:**

Work with the second edition mobile of Sybian6.0,such as Nokia 3230, 6260, 6630, 6670, 6680, 6681, N70, N72, N90 ;

And Work with windows mobile 6.0 and the edition above windows mobile 6.0.Such as Dopod and Samsung mobile. Can also work with Android system, such as Google Mobile.

Can work with Iphone.

**Attention: When you use the Bluetooth to match a mobile ,the related mobile Bluetooth background software should be installed .**

## Installation Guide

**Install to Computer:**

**Step1. Keyboard and computer matching steps :**

Open power switches

(1)As the **diagram shows**, Turn on the power switch, **The red light flashes once**, that's indicate your keyboard is boot,



Power off/on



Matching push button


(2) . Presses the code button one time , the red LED flashes , **Tip your keyboard have entered the right code state.**

## Step2. Connecting the Keyboard to the Dongle.

Insert the attached USB Bluetooth adapter ( If your keyboard is not equipped with a Bluetooth adapter or your Bluetooth adapter has been lost, please have your local mall to buy electronic products Bluetooth Adapter ) to the computer USB Connector. (The computer have built in Bluetooth function do not need Bluetooth Dongle), then the computer will install Dongle drivers automatically ( If the Dongle is with CD that the installation should be required by hand).

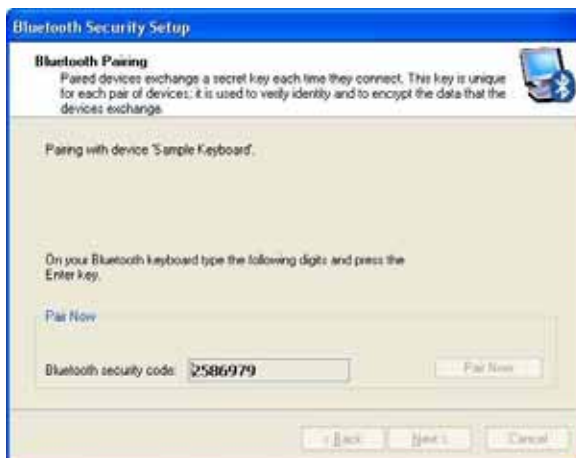
## Match Procedure

### A: Match on Widcomm (recommended)

1. Double click the Icon again  , “My Bluetooth Place” pops up; select “Bluetooth ---Add Bluetooth facility”. Click “Next” button In the Setup Guild window.



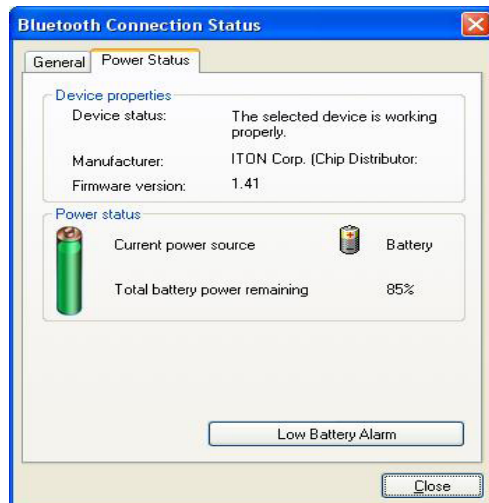
2. When the system finds the Keyboard, select it and click “Next”.  
3. Input the stochastic Match Code, and Confirm.



4. Now you can use your keyboard at ease.

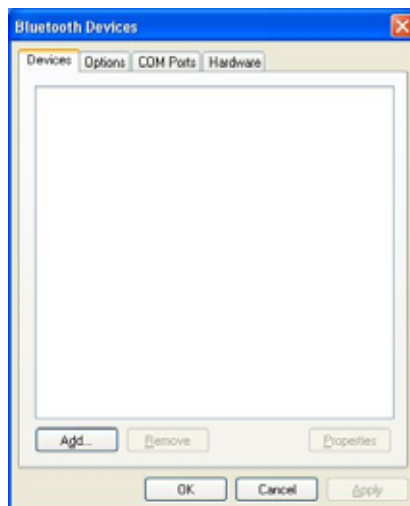
**Tips:**

If you are using the Widcomm Bluetooth Software, select the keyboard icon and click the right button of the keyboard and select “Status”, then you can check the power status of the batteries and setup alarm for shortage of battery.

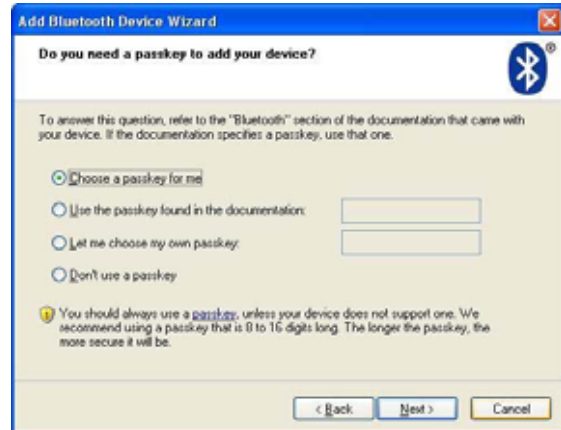
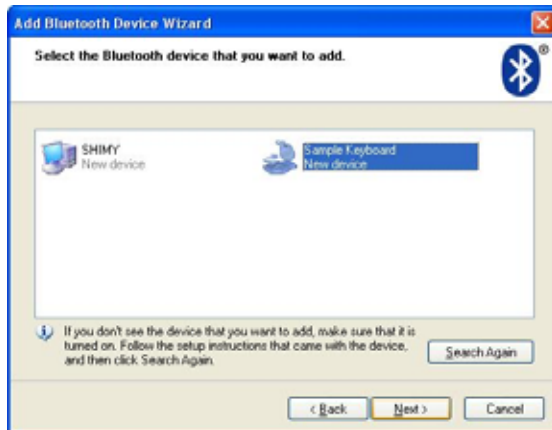


**B. Match on Microsoft built-in software**

1. Make sure that the Bluetooth Function has been activated. Double click the Bluetooth Icon on the Task Bar or in the Control Panel, open the “Bluetooth Management” window, click “Add”, tick off “facility is ready for searching”, click “Next”.

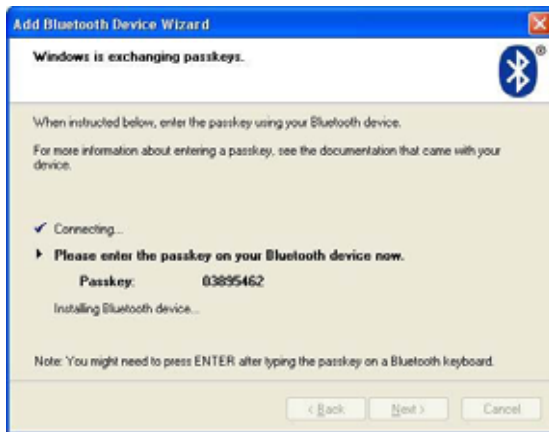


2. Wait till the keyboard is found, select keyboard and click “Next”



3. Select "Choose a pass key for me", click "Next".

4. Input the pass key and press "Enter", click "Next", the system will finish the installation of the new facility automatically.



### C. Match on IVT Software

1. Make sure that the Bluetooth function is active. Double click the Bluetooth Icon, open the Management window, select "Search for Bluetooth facilities" or click the Round Ball in the middle of the window.



2. Click the Bluetooth Keyboard founded, click the right button for "Refresh Service".

3. Select the Bluetooth Keyboard again, click the right button for "Connect-Bluetooth Input Service", input the stochastic pass key, the system will auto install the HID facility. After that you can use your Bluetooth Keyboard at ease.

## 2. Install To Mobile :

- (1) Put CD into computer, copy the Bluetooth background software to your mobile then you can install the Bluetooth software to your mobile.
- (2).Put batteries on the bottom of keyboard and Close the Battery Cabinet, press the match button..
- (3).Open Bluetooth from mobile and search ,after Bluetooth keyboard is found, please follow the steps in user's guide of mobile, connect mobile and keyboard,(there is no point out when you enter the password, so please make sure the right operation and then press "enter" key.)

Charge

When you using the keyboard , if the red light flashes on the keyboard, that's indicate your keyboard is lack of power, you should give your keyboard to recharge. Charging steps are as follows



Insufficient power indicator light

- (1). Put one end of the USB cable into the Adapter , the other end into the keyboard charge interface, As follow shown:



Charging interface

Charging Indicator

(2)When the keyboard is charging, the green light is often bright. When the green light off, that's means the keyboard is full charged.(the charging time is 2 hours)

## Storage

(1) When you are finished using your keyboard or you will be required after the keyboard to carry , so don't forget to set aside the keyboard to switch the source OFF Office, turn off the keyboard's power to extend battery life

## Attentions:

1. Keep away from sharp objects.
2. Do not put **heavy object on keyboard too long.**
3. Do not heating it in microwave oven.
4. Do not strength or twist . Do not strength or twist .
5. Keep away from oil or any other organic liquid.
6. Do not press the keyboard when it is in folding state.

**You can wash the silicone parts by water, alcohol or disinfectant, but only can scrub the parts of plastics.**

## FAQ:

1. If unable to connect the Bluetooth Keyboard to the computer, or the Keyboard work unconventionally, please try the steps below:

- (1) Before you install your Bluetooth Keyboard, please make sure you have done the Bluetooth Dongle installation procedure, and the Bluetooth facility is turned on.
- (2) Press and release the connect button on the bottom of Bluetooth Keyboard. The red led light will change into a flashing mode.
- (3) Make sure that the keyboard is within the effective range---10M.
- (4) Make sure that there's no change of the Bluetooth facility. If anything changed, please kindly rematch.
- (5) If your Bluetooth facility is connected to other Bluetooth products, please kindly confirm that the speed of the Bluetooth facility is enough.
- (6) Please kindly check the batteries. If they are short of power, replace them for new ones.
- (7) Please make sure that your Bluetooth Dongle is damaged or not .

**2. Every time you turn off the keyboard power and afer trun on it or reboot the computer shuts down , if it is no response**

(1) After the keyboard and the computer power , re-install back, the keyboard and the computer needs to re-invent code, which may take 23 seconds of your time, if you shut down and then boot, or keyboard, disconnect the power re-opened, please you press any key on the keyboard, and then wait three seconds, your keyboard can be properly used.

**TIPS: When your battery is low, low-voltage lights on the keyboard will blink, and you should give your keyboard charging, so as not to affect your work.**

**Federal Communication Commission Interference Statement**

This equipment has been tested and found to comply with the limits for a Class B digital device. Pursuant to Part 15 of the FCC Rules. These limits are designed to provide reasonable protection against harmful interference in a residential installation. This equipment generates uses and can radiate radio frequency energy and, if no installed and used in accordance with the instructions, may cause harmful interference to radio or television reception, which can be determined by turning the equipment off and on, the user is encouraged to try to correct the interference by one of the following measures:

Reorient or relocate the receiving antenna

Increase the separation between the equipment and receiver.

Connect the equipment into an outlet on a circuit different from that to which the receiver is connected

Consult the dealer or an experienced radio/TV technician for help.

FCC Caution: Any change or modifications no expressly approved by the party responsible for compliance could void the user’s authority to operate this equipment.

**IMPORTANT NOTE:**

**FCC Radiation Exposure Statement:**

1. This equipment complies with FCC radiation exposure limits ser forth for an uncontrolled environment. End users must follow the specific operating instructions for satisfying RF exposure compliance.
2. This transmitter must not be co-located or operating in conjunction with any other antenna or transmitter.

This device complies with Part 15 of the FCC Rules. Operation is subject to the following two conditions (1) This device may not cause harmful interference, and (2) this device must accept any interference received, including interference that may cause undesired operation.