

BL-BKB76D Bluetooth Keyboard Manual

Content

•Product Content	(1)
•Product Features.....	(1)
•Specifications	(1)
•Important Notes	(2)
•Keyboard and iPad connection.....	(8)
•Charging.....	(11)
•Keyboard and iPad hotkeys specifies.....	(13)
•Storage.....	(14)
•Troubleshooting	(15)

Contents

- 1、 Bluetooth Keyboard
- 2、 Manual
- 3、 Protective Case
- 4、 Charging Cable

Specifications

- 1、 Use Broadcom20730 main control chip, have Bluetooth 3.0 interface.
- 2、 Built-in power management software, can be in Microsoft's Windows system automatically usable capacity.;
- 3、 Unique design: effectively avoid noise pollution.
- 4、 Waterproof ,dustproof, anti-pollution, anti-acid design, waterproof for silicone pary, can wash it directly by water.
- 5、 Caps lock signal helps in capital letters writing.
- 6、 Support business and communications.
- 7、 Built-in lithium battery design can uses at lest 300 times repeatedly.
- 8、 More iPad support Angle, can effectively relieve eye fatigue.
- 9、 Compatible with Windows 2000 and above, MAC, IOS4.0 and Android3.0 above system.

Specifications

- 1、 executive standard: bluetooth : V3.0
- 2、 maximum operating distance: 10 meters
- 3 、 modulation mode: 2.4 G straight sequence fh (FHSS)
- 4、 transmit power: scale-up 2 levels
- 5、 working voltage: 3.7
- 6、 working current: < 3.0 MA
- 7、 standby current: < 1.5 MA
- 8、 sleep current: < 52UA

- 9、 charging current: > 100MA
- 10、 and standby time: 360 days
- 11、 heoretical use time: 37 days
- 12、 continuous uninterrupted use time: 150 hours
- 13、 theoretical charging time: 4-4.5 hours
- 14、 lithium battery capacity: minimum: 450MAH
- 15、 lithium battery life: three years
- 16、 the lithium battery type: 4.5 * 24 * 47MM
- 17、 the key dynamics: 60 ± 10g
- 18、 buttons life: 500 million times
- 19、 operation temperature: -20-60 °C
- 20、 storage temperature: - 40-70 °C

Important Notes

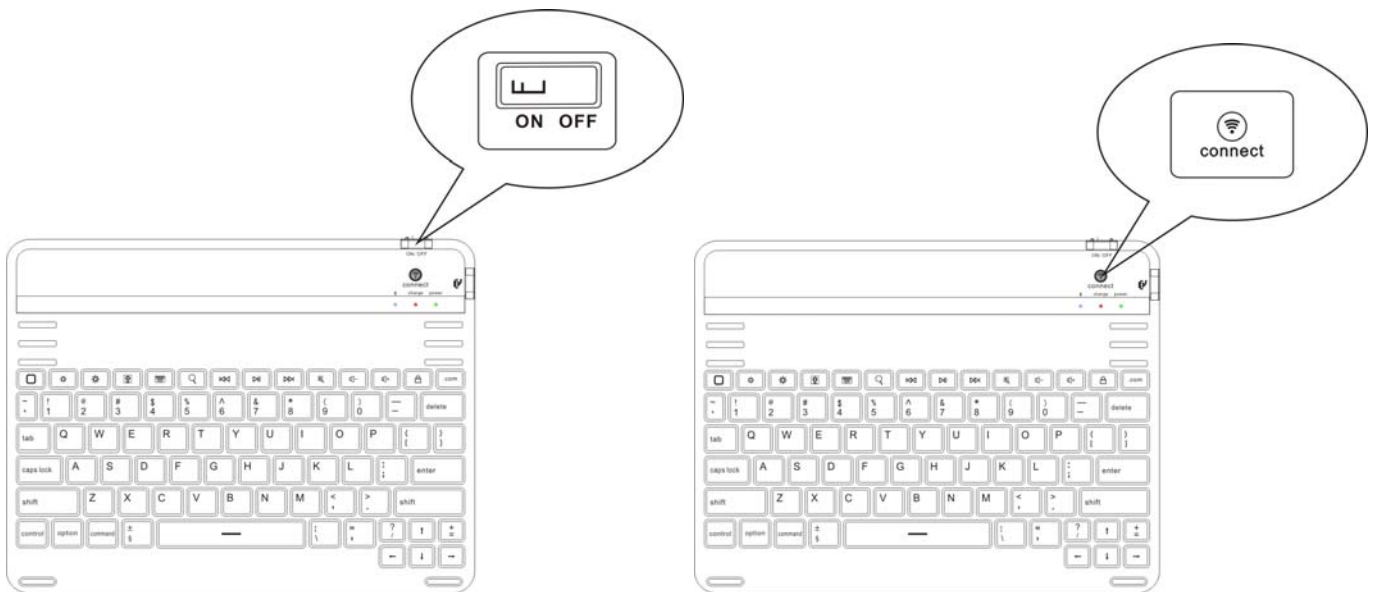
1、 Before installation the keyboard before its first use when you turn on the POWER switch, Bluetooth keyboard POWER indicator in 3 seconds later instructed parade at the keyboard is not bright, paired with any equipment, when LED light after 5 seconds do not connect to the keyboard detected any device with Bluetooth keyboard POWER indicator into sleep will extinguish (instructions state). If you use a later, in the second turning the keyboard can connect to equipment, then POWER indicator light wouldn't extinguished, and Bluetooth on the finish link device automatically put out.

2、 When you use Bluetooth keyboard in the process, if no action, halfway through the keyboard after 15 minutes keyboard will automatically entered the sleep state, while POWER indicator will also put out, when you come back will continue to use the keyboard, then you just press any buttons on a keyboard, wait for about 3 seconds, the keyboard will connected to the device automatically to Bluetooth connection, the process of the connection will light, complete the connection automatically extinguished, and stay Bluetooth keyboard again after lights extinguished, when POWER indicator use long bright.

Keyboard and iPad connection

(1)、As shown in figure, will turn to switch ON keyboard Power in three seconds, Bluetooth indicator lights and Power after long bright 5 seconds, and then extinguished, right now the keyboard has work.

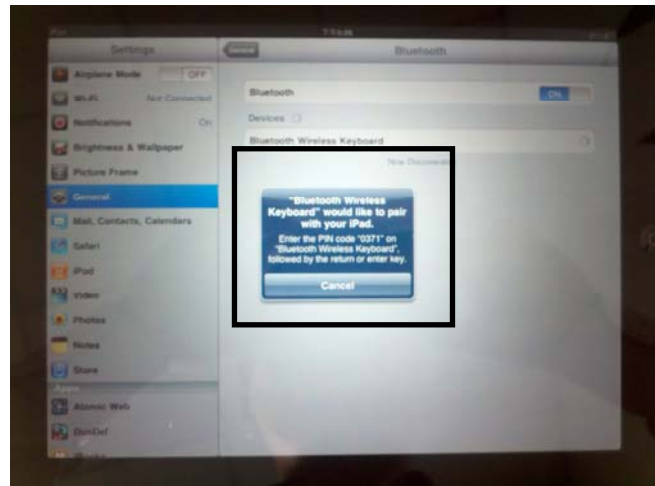
(2)、According to a keyboard to Connect (Bluetooth) yards keys, flashing, Power indicator lights, hints your keyboard long bright has entered into the working condition of yards.



(3)、Click Settings button on the iPad, iPad into settings area; Then select options, and then select before Bluetooth. Bluetooth option will open at iPad into Bluetooth search state, looking for Bluetooth devices.



(4)、iPad into search state, looking for Bluetooth devices and search to Bluetooth keyboard (shown below), search to Bluetooth keyboard, iPad will show you on the keyboard input password and iPad connection



(5)、 According to the iPad tip of corresponding pairing code input, note: no hint, please input to determine the correct and press the return key.

(6)、 After the success of the iPad and the keyboard connections, Power indicator light, says the keyboard to long success, Power indicator code is to remind you long bright keyboard not in use when closed keyboard Power, at the keyboard use process if found Power indicator light flashing, says the keyboard electricity shortage, please charge.

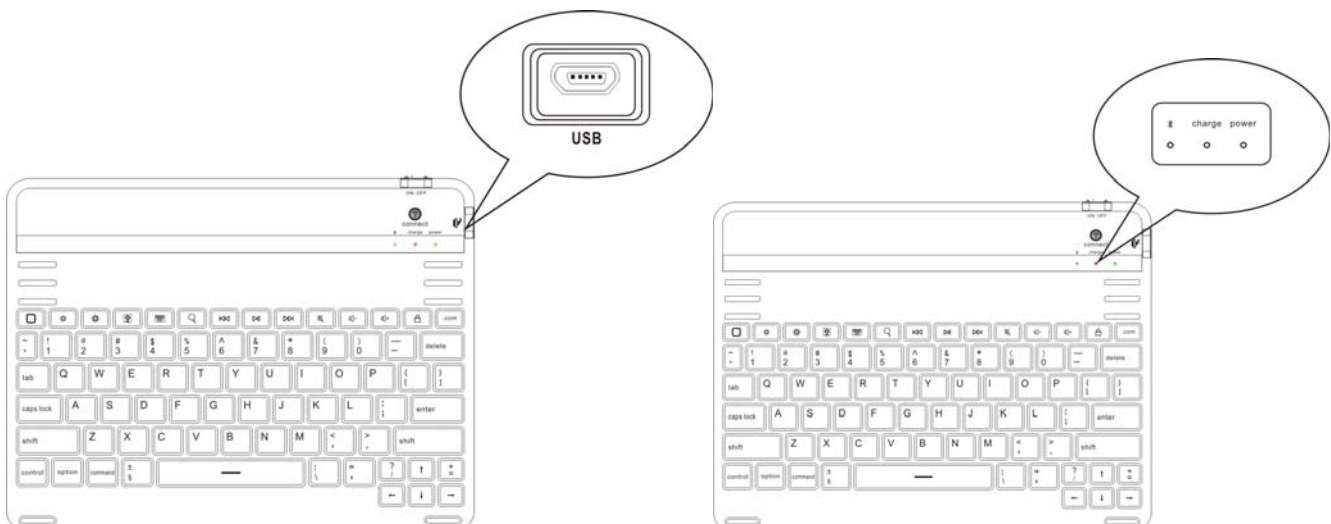
Charging

When you use the keyboard in the process, the keyboard of POWER (POWER) instructions parade into rapid flashes state, right now you keyboard's electricity shortage, you should give your keyboard charging, charging steps as follows: :

(1)、 Will take charge line attached to the USB male seat end insert computer USB interface or USB interface of the iPad charger, the other side is inserted into the USB charging interface, MINI5PIN keyboard as below:

(2)、 At this time will indicator (shown below), when the batteries will be destroyed after indicator.

(theory charging time for 4 hours)

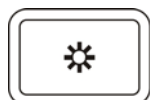


Tips: when your battery voltage, the keyboard of Power blink, right now you should give your keyboard charging, lest affect your work.

Keyboard and iPad hotkeys specifies



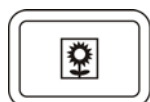
Press this button can return home page.



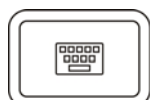
Press this button can control iPad screen brightness drop.



Press this button can control iPad screen brightness increases.



iPad locked in on this key, iPad into the screen saver pictures interface.



When in use iPad edit the document by this button to call up and hidden iPad virtual keyboard.



iPad in boot state, press this button can enter the IPAD search page.



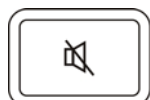
When the iPad in music broadcast, click this button can control music upgrade.



iPad in boot state, press this button can control the play/pause music.



When the IPAD in music broadcast, click this button can control music downwards.



Press this button can be mute, click again.



Press this button can to reduce the volume.



Press this button can increase the volume.



Press this button can lock iPad screen.



In the input of the web site, hold . Com can realize functions.

Storage

(1)、 When you have finished using your keyboard or you need to carry the keyboard, please don't forget when the keyboard source switch to OFF place, closed keyboard power, to extend battery life.

(2)、 When you need long time battery storage for your keyboard, please don't forget to put a battery power charger to a half, about charging 2 hour, then store your keyboard, this can help the lithium-ion batteries live longer.

Note:

- 1、 Cannot use sharp objects blow;
- 2、 Will not clog is pressed above;
- 3、 And when not in use please shut off the power;
- 4、 Keyboard batteries release as soon as possible after charging, the battery can't be long time are without power, otherwise may damage to the battery state.

Troubleshooting

1、 Keyboard and iPad cannot establish connections:

- (1)、 Please check your iPad Bluetooth device is already open and went in search of state.
- (2)、 Hold and release the keyboard after Bluetooth keyboard pairing button, a flashing lights state.
- (3)、 Keyboard and iPad connected in 10 metres from working range.
- (4)、 iPad Bluetooth devices have change, if there is a need to match again.
- (5)、 Your iPad Bluetooth device is also connected to the other bluetooth terminal and confirm iPad Bluetooth device speed.
- (6)、 Check your battery, if there is electricity shortage, please charge.

2、 Rechargeable lights not bright when charging:

- (1)、 Check the charger or if you are using computer USB port have voltage output, recommend replacing charger or computer USB port.
- (2)、 Check whether the two ends of the charging line connected.
- (3)、 Batteries have been filled, temporary not need to recharge.
- (4)、 Sent to the designated thrusters for repair.

The FCC, the federal communications commission interference statements:

This equipment has been tested and found to comply with the limits for a Class B digital device, pursuant to Part 15 of the FCC Rules. These limits are designed to provide reasonable protection against harmful interference in a residential installation.

This equipment generates, uses and can radiate radio frequency energy and, if not installed and used in accordance with the instructions, may cause harmful interference to radio communications. However, there is no guarantee that interference will not occur in a particular installation. If this equipment does cause harmful interference to radio or television reception, which can be determined by turning the equipment off and on, the user is encouraged to try to correct the interference by one or more of the following measures:

- Reorient or relocate the receiving antenna.
- Increase the separation between the equipment and receiver.
- Connect the equipment into an outlet on a circuit different from that to which the receiver is connected.
- Consult the dealer or an experienced radio/TV technician for help.

This device complies with Part 15 of the FCC Rules.

Operation is subject to the following two conditions:

1. This device may not cause harmful interference, and
2. This device must accept any interference received, including interference that may cause undesired operation.

FCC Caution

Any changes or modifications not expressly approved by the party responsible for compliance could void the user's authority to operate this equipment.