

Parrot 3400 LS-GPS with ETEN Glofish X600 and TomTom Navigator 6



Teste with ROM : 030 WWE



**ETEN Glofish X600
with TomTom Navigator 6**



Parrot 3400 LS-GPS



SETUP PROCEDURES

Features

- I/ 3400 LS-GPS Pairing Procedure
- II/ GPS Connection
- III/ TomTom Navigator 6 Setup Procedure
- IV/ Plan a Route



Features

- Two Bluetooth connections at the same time : GPS and Handsfree.
- Voice navigation instructions through PDA headspeakers ONLY
- Voice navigation instructions are NOT played DURING a call
- **Automatic** switch between GPS software and phone applications when using red and green carkits buttons (especially on “Incoming” and “Outgoing” Call)
- **Manual** return in navigation after: hanging up with the phone a call, picking up by the phone an “Incoming” call (then discrete mode)
- Automatic GPS connection (if option activated into Settings/GPS/Settings/“Connection on Start Up”)

Mandatory : **Valid GPS signal** is needed to establish stable “GPS connection” between **Parrot 3400 LS-GPS with ETEN Glofish X600** (otherwise there are GPS disconnections)



Step I

-

3400 LS-GPS Pairing Procedure for Hansfree Connexion

Step I – 3400 LS-GPS Pairing Procedure



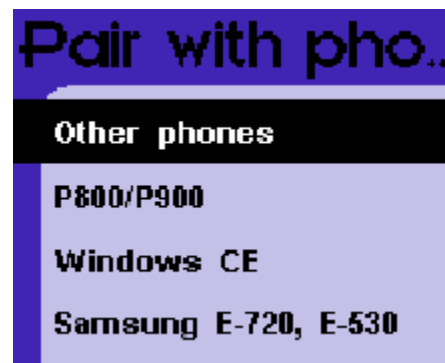
Parrot 3400 LS-GPS
"Idle Mode" with Valid
GPS signal



Please go into the menu
"SETTINGS" of the carkit



Step I – 3400 LS-GPS Pairing Procedure



Then, go into the menu
"PAIR WITH PHONE \ OTHERS PHONES". The
carkit will display a random PIN code.

Parrot 3400 LS-GPS with ETEN Glofish X600 and TomTom Navigator 6



Step I – 3400 LS-GPS Pairing Procedure



From the Smartphone Idle screen, please select the "START" menu. Select the Configuration Manager



Please make sure that the Bluetooth is 'ON'

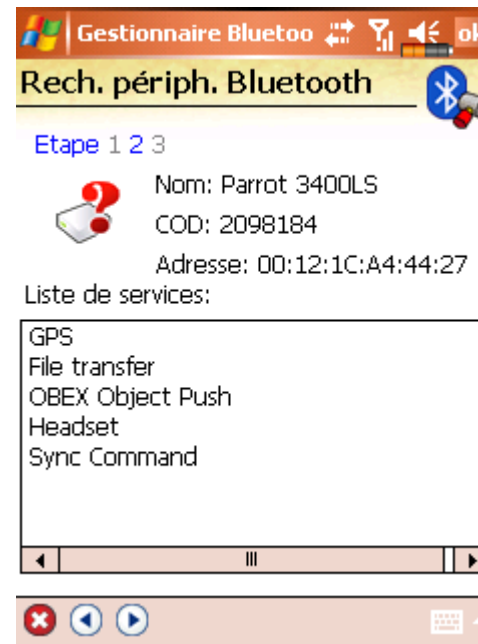


Step I – 3400 LS-GPS Pairing Procedure



Then tap on "Search DEVICES" – A search is made

ETEN Glofish X600 searches for Bluetooth devices



Select your Parrot 3400 LS-GPS

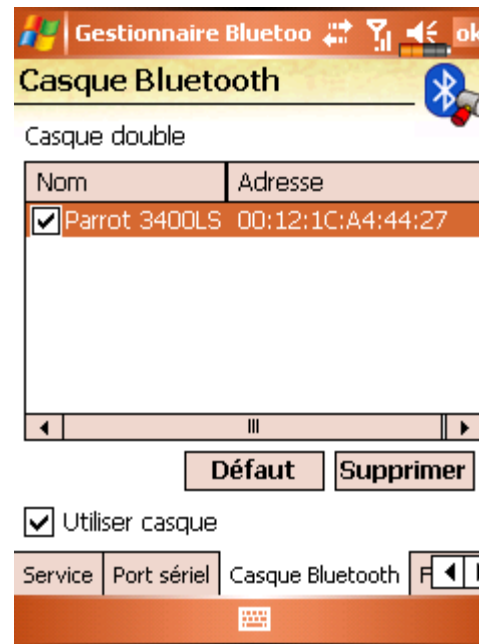
Parrot 3400 LS-GPS with ETEN Glofish X600 and TomTom Navigator 6



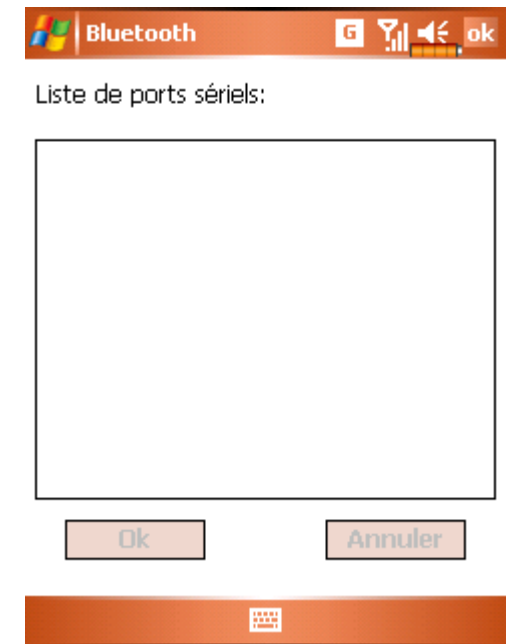
Step I – 3400 LS-GPS Pairing Procedure



Position your Parrot into the mode "Settings / Pair a phone / Other phones"
Enter the "PIN CODE"
displayed by the car kit



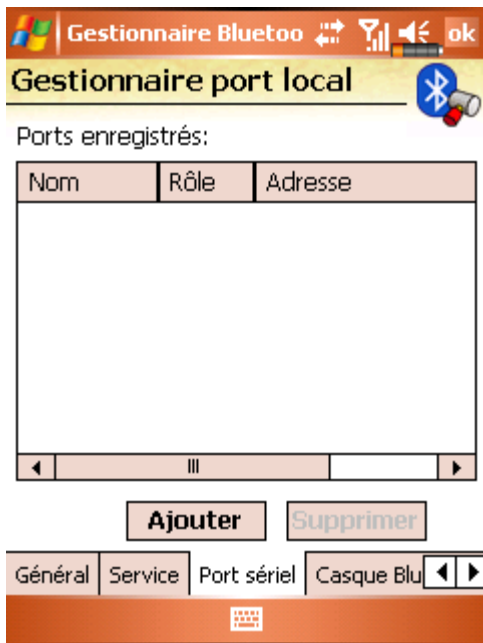
Activate the HandsFree - Handsfree Pairing is done, a connection will be done automatically



For the moment, there is no Serial Port services.



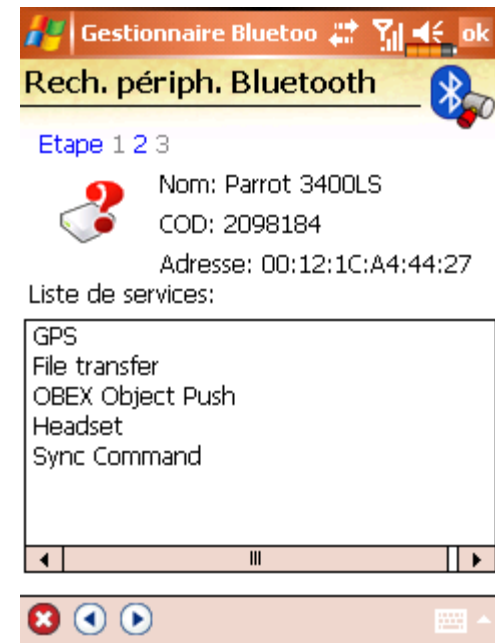
Step I – 3400 LS-GPS Pairing Procedure



On the “COM PORTS” tab, please select the “NEW OUTGOING PORT” command



Select your Parrot 3400 LS-GPS among the diverse devices found.





Step I – 3400 LS-GPS Pairing Procedure

The first screenshot shows the 'Rech. périph. Bluetooth' window. It includes a keyboard and a numeric keypad. The 'Nom dispos:' field contains 'Parrot 3400LS'.

The second screenshot shows the 'Nouveau port sériel' window. The 'Port sériel enregistré:' section has the following values:
Nom: COM
Rôle: Client
Index: 6
Below this, it says: 'Vous enregistrez nom '<COM6>'Port sériel Bluetooth.'

The third screenshot shows the 'Gestionnaire port local' window. It displays a table of registered ports:

Nom	Rôle	Adresse
COM6:	Client	00:00:00:00:00:00

Below the table are 'Ajouter' and 'Supprimer' buttons. At the bottom, there are tabs for 'Général', 'Service', 'Port sériel', and 'Casque Blu'. A small dialog box in the middle of the second and third screenshots says 'Enregistrement réussi!' with a warning icon.

Select the “COMx OUTGOING PORT” (preferentially COM6 or COM7 if possible)

An Outgoing COM port has been created



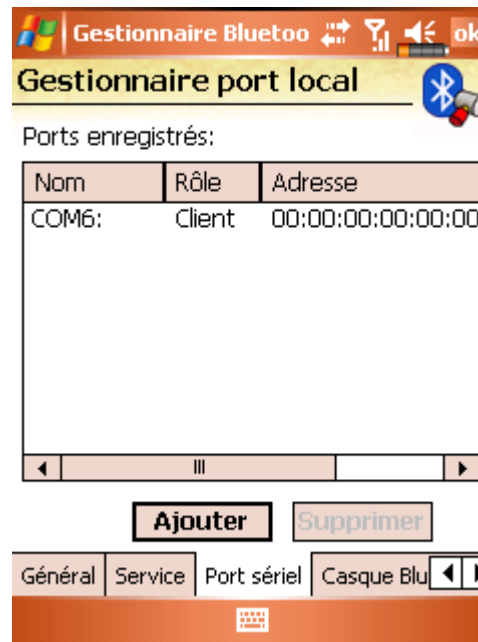
Step II

-

**Pairing Procedure for GPS Connexion on the
3400 LS-GPS side**



Step II – GPS Connection



HandsFree connection is established. Now, let us operate the GPS connection.

Step II – GPS Connection



Navigate to the Parrot 3400 LS-GPS menu (the fourth one from the idle mode)



Go into the "ACTIVATE / DEACTIVATE" menu of the Parrot 3400 LS-GPS



Make sure the GPS feature is "Activated"



Step II – GPS Connection

Press the carkit's RED BUTTON for at least three seconds. Your carkit and your mobile phone will be disconnected and a pop-up "Please connect GPS" appears on the Parrot 3400 LS-GPS



Step III

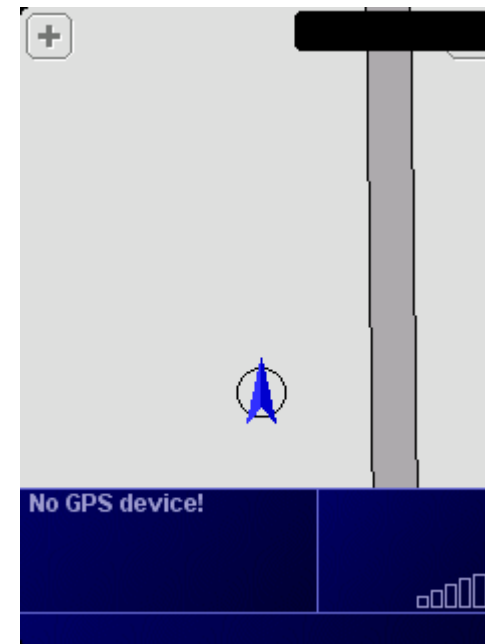
-

Pairing Procedure for GPS Connexion on the phone side

Step III – TomTom Navigator 6 Setup Procedure



Please start your “TomTom Navigator 6” software in the menu “Programmes”



“TomTom Navigator 6” start screen without GPS signal: you need to configure GPS reception – please tap on the screen



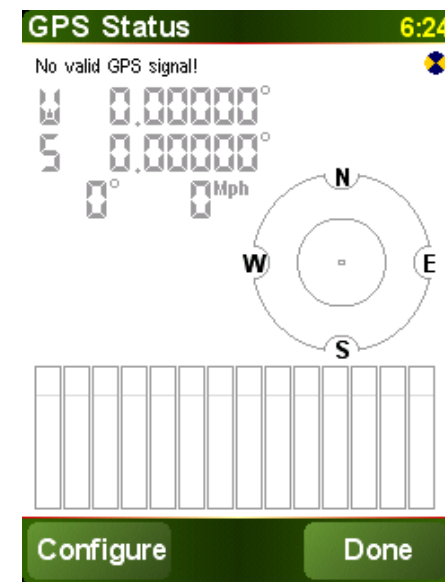
Step III – TomTom Navigator 6 Setup Procedure



Tap on "Change Preference"



Select the "GPS Status" icon



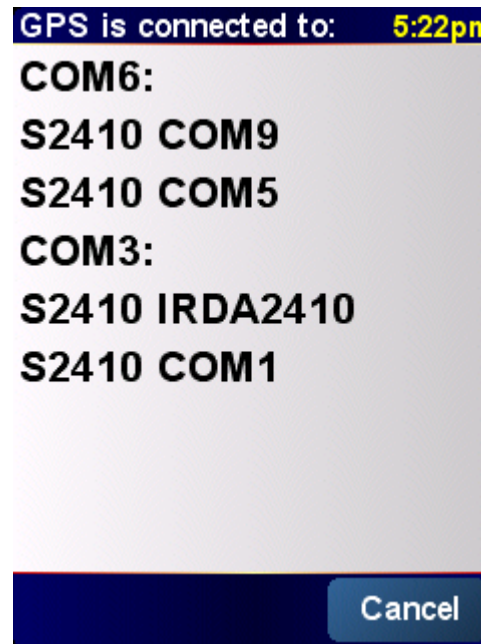
Choose the "Configure" option and validate



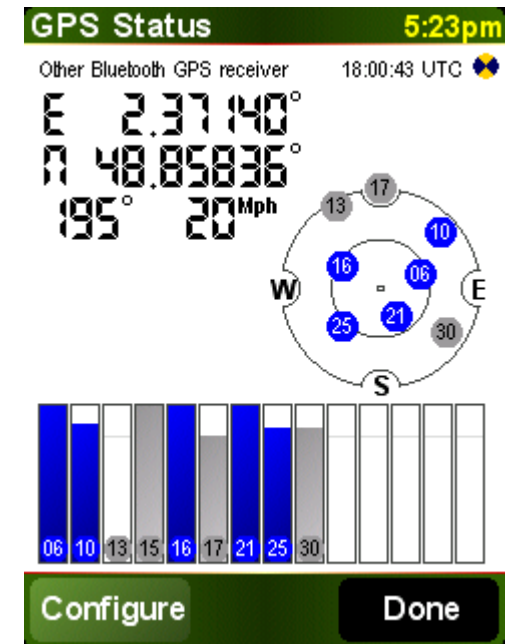
Step III – TomTom Navigator 6 Setup Procedure



Please select "Other Bluetooth receiver" – then press on "continue"



Select the port you have just defined as the GPS channel beforehand ("COM0" for our example)



Your Parrot 3400 LS-GPS is now defined as the source of GPS signal for TomTom



Step IV

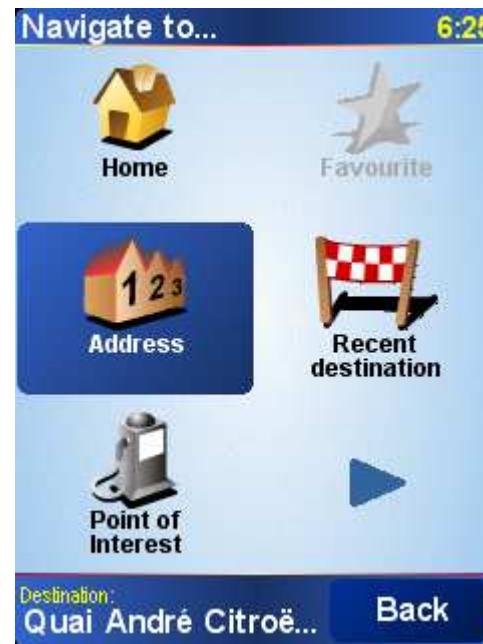
-

Use the GPS Connexion to navigate

Step IV – Plan a route



On the HOME screen, tap on the "Navigate to" icon



You have different options available to define your destination.



Option #1: Choose "Address" and select "City Center" to define your destination the most simple way.



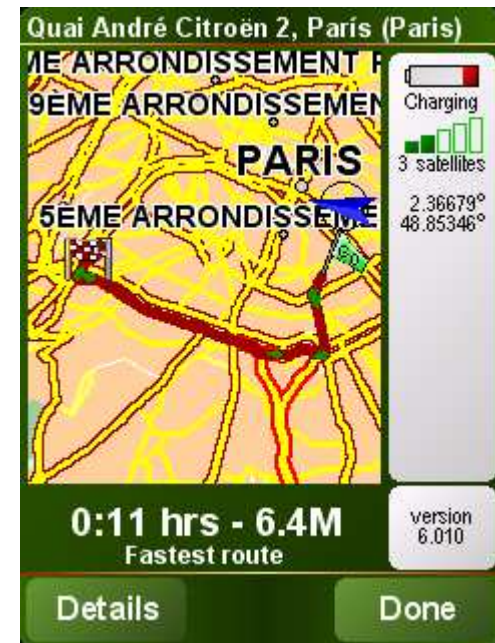
Step IV – Plan a route



Option #2: Choose "Advanced Planning", meaning you need to define depart and destination points



Option #2: Choose "Street and house number" for each of these points



Option #2: enter the precise address. Define the City, then the Street, then the number of your destination

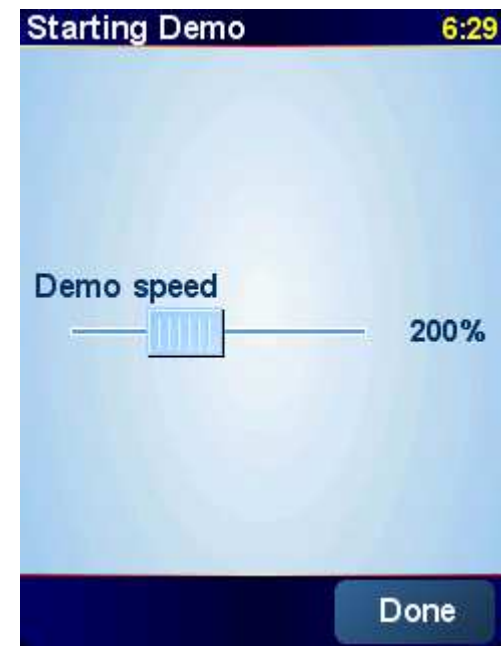
Step IV – Plan a route



The TomTom software calculates the journey to the destination you entered



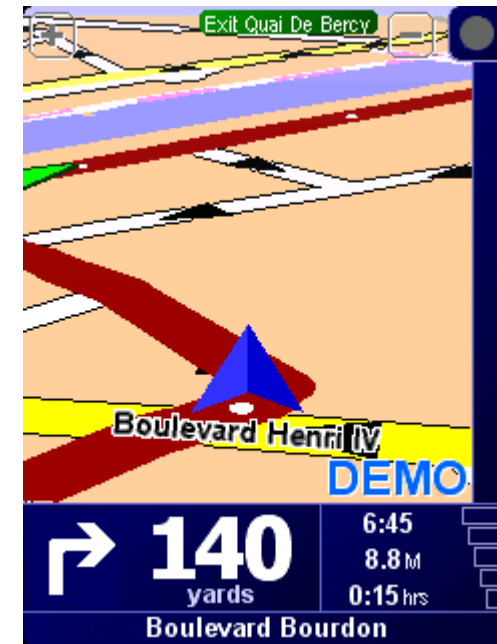
Tap on Details to simulate your itinerary, then "Display a demo of the itinerary", then select the speed of demo (200%)



The simulation is launched



Step IV – Plan a route



Navigation with "TomTom Navigator 6"