

*** USER'S MANUAL ***

FCC ID : NDPM1POS

The Federal Communication Commission Statement

This equipment has been tested and found to comply with the limits for a Class B Digital Device, pursuant to Part 15 of the FCC rules. These limits are designed to provide reasonable protection against harmful interference in a residential installation. This equipment generates, uses and can radiate radio frequency energy and, if not installed and used in accordance with the instruction, may cause harmful interference to radio communication. However, there is no guarantee that interference will not occur in a particular installation. If this equipment does cause harmful interference to radio or television reception, which can be determined by turning the equipment off and on, the user is encouraged to try to correct the interference by one of more of the following measures: -

- **Reorient or relocate the receiving antenna.**
- **Increase the separation between the equipment and receiver.**
- **Connect the equipment into an outlet on a circuit different from that to which the receiver is connected.**
- **Consult the dealer or an experienced Radio/TV technician for help.**

Use only shielded cables to connect I/O devices to this equipment. You are cautioned that change or modifications not expressly approved by the party responsible for compliance could void your authority to operate the equipment.

THIS DEVICE COMPLIES WITH PART 15 OF THE FCC RULES. OPERATION IS SUBJECT TO THE FOLLOWING TWO CONDITIONS: (1) THIS DEVICE MAY NOT CAUSE HARMFUL INTERFERENCE, AND (2) THIS DEVICE MUST ACCEPT ANY INTERFERECE RECEIVED, INCLUDING INTERFERENCE THAT MAY CAUSE UNDESIREED OPERATION.

1. This device may not cause harmful interference and
2. This device must accept any interference received, including interference that may cause undesired operation.

User Guide & Copyright

The information in this document is provided “as is” without warranty of any kind, including, but not limited to, the implied warranties of merchantability and fitness for a particular purpose, and is subject to change without notice for improvement of the product.

This document contains proprietary information that is protected by copyright. No part of this document may be photocopied, reproduced, or translated to another language without the prior written consent of Partner Tech Corp.

This User Guide is basically available for those who are familiar with Windows OS. You can refer to your PC manual or User guide for further information on PC operation.

Programs included in the product are protected by copyright. No programs may be produced, remade, or translated to another language without the prior written consent of Partner Tech Corp.

Microsoft, ActiveSync, Windows, the Windows logo and Windows CE logo are either registered trademarks or trademarks of Microsoft Corporation in the United States and /or other countries. License of Microsoft Products OEM is offered by Microsoft Licensing Inc.

All other product names mentioned herein may be trademarks of their respective companies.

©2006 PARTNER TECH CORP. CO.,LTD

Tel: 886-2-2918-8500

Contents

1. Contents of the Box
2. Getting Started
3. Precautions
4. Printer
5. Card Reader
6. Bar-code Reader
7. Wireless LAN
8. Connection to a Computer
9. Setting and Optimizing

1. Contents of the Box

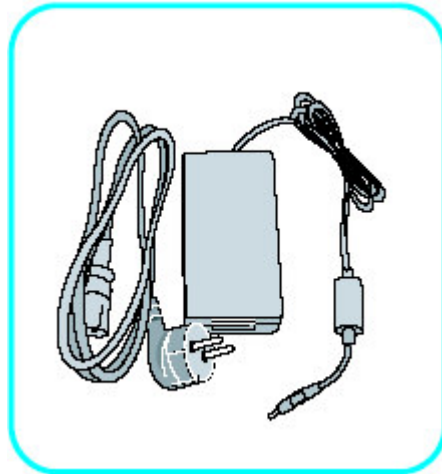
1-1. Components and Peripherals

Confirm that the main component and peripherals are all included.

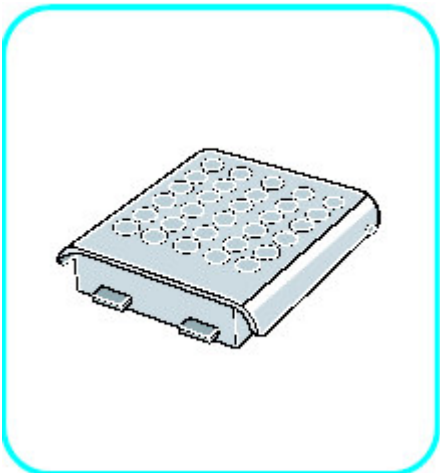
[Basic Units]



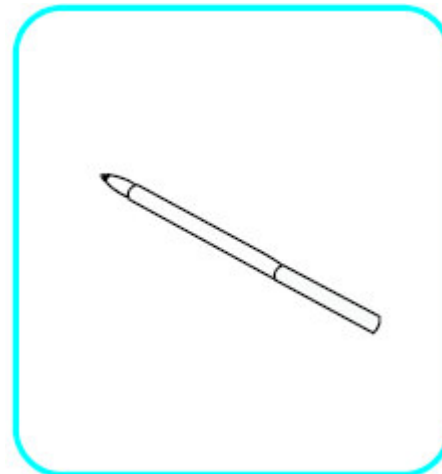
M1-POS (main component)



AC Adapter

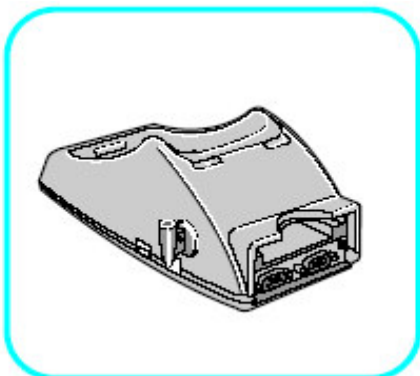


Battery

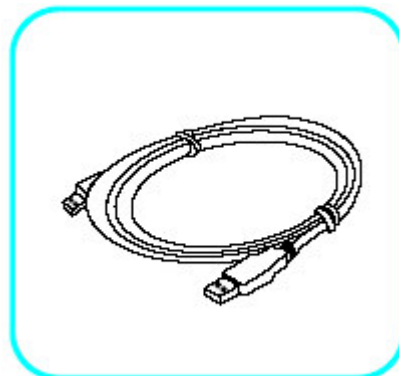


Stylus pen

[OPTION]



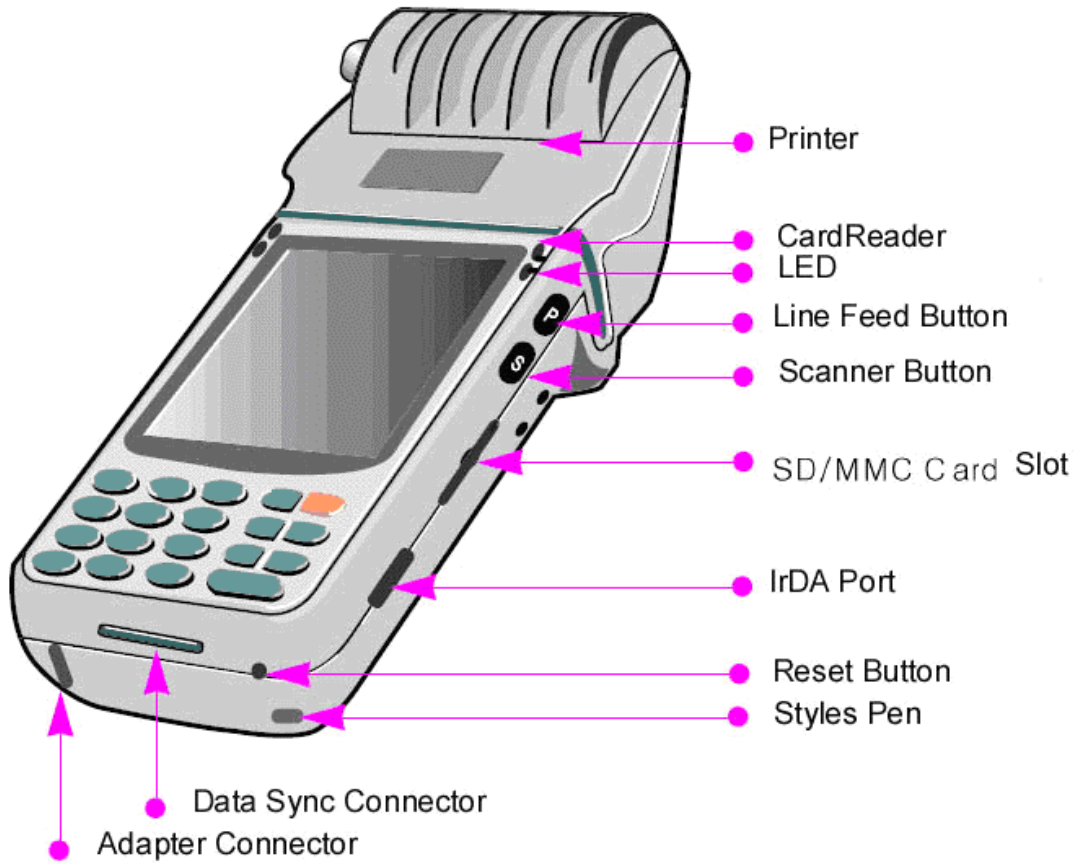
Universal Cradle

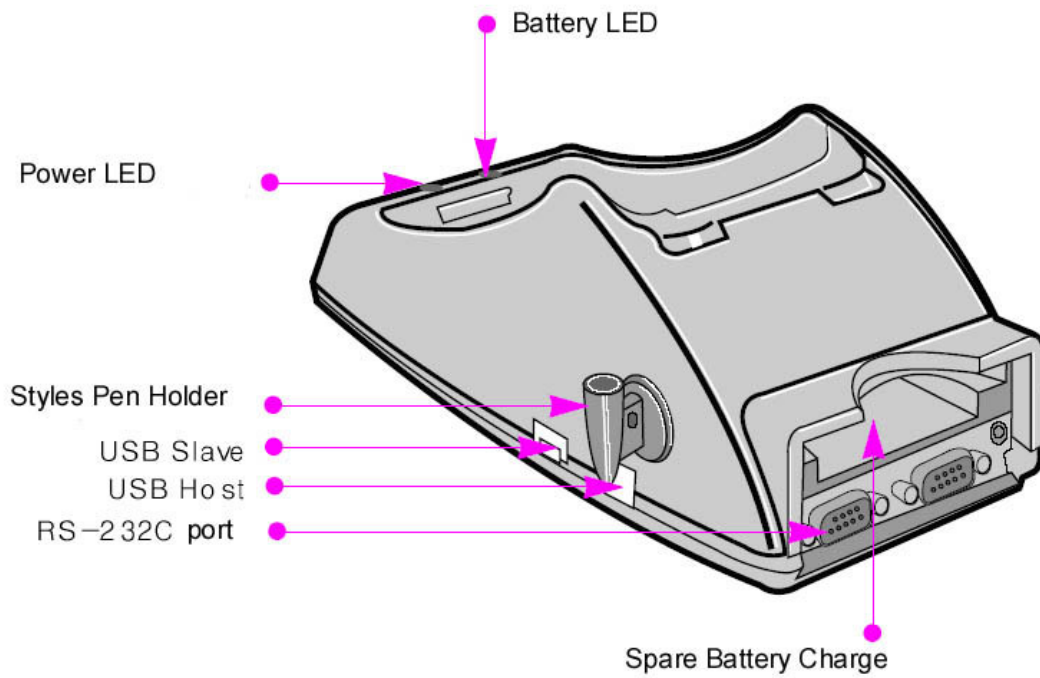
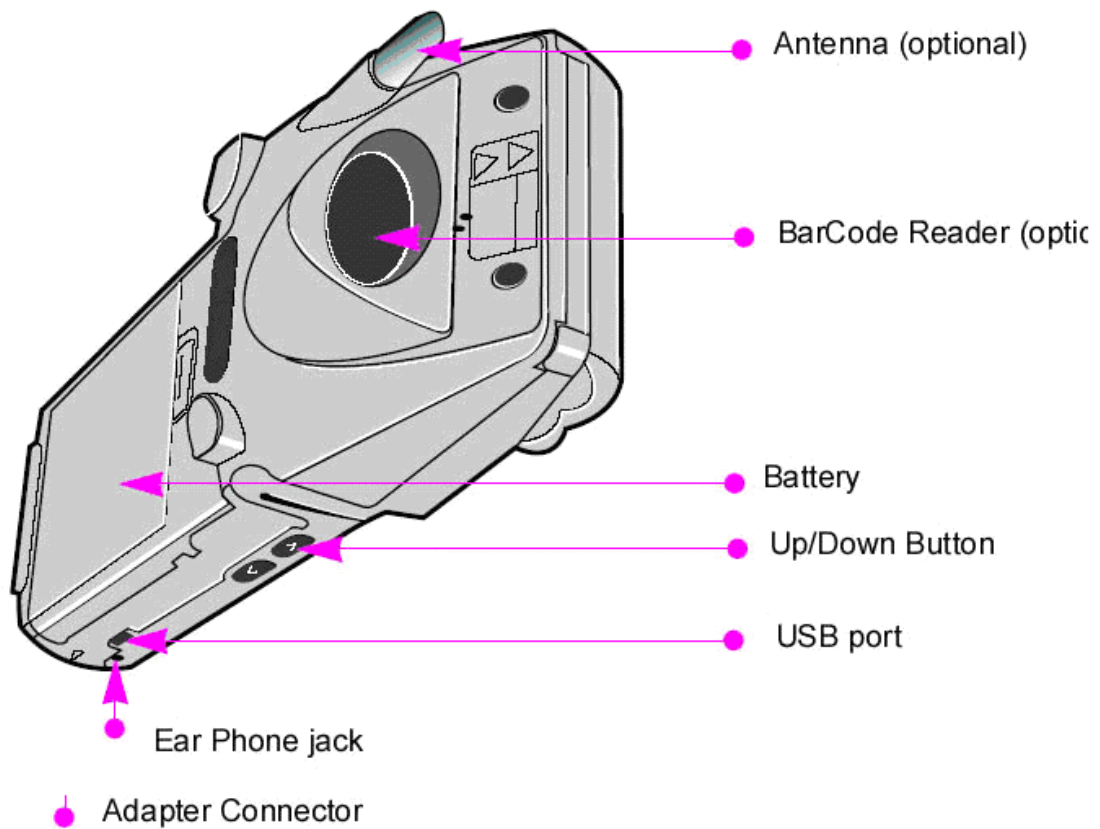


USB cable

1-2. Overview

See pictures below and check how it works.





1-3. Hardware Specifications

System Feature	M1-POS
OS	Microsoft Windows CE 5.0
CPU	Intel PXA270 520MHz
Memory	32MB NOR / 64MB NAND / 64MB, 128MB SDRAM
Display	320x240, 3.5" 260K color TFT-LCD with Touch Screen
Battery	1850mAh(7.4v) Li-ion rechargeable (Detachable)
Keys	12 numeric key & Functional keys with LED Lighting
Indication	4 LEDs (GPRS/GSM, Charging, Printer) & Buzzer
I/O	USB/Serial, IrDA, Speaker, Stereo Ear-mic jack, DC jack
Dimension	76.2(max. 88.1) x 222 x 33.3(max. 49.7) mm
Weight	400g
Communication	802.11b Wireless LAN built-in / GPRS/GSM 1x optional
Card reader	Track 1, 2, 3 support / multi direction
Printer	2 inch Thermal Printer built-in
Barcode Scanner(option)	Class 2 Laser product

※ LED indicators

Upper left: GPRS/GSM communication

Down left: WLAN communication

Upper right: Power & Charge indicator

Down right: Printer active

Cradle right: Power & Charge indicator

Cradle left: Battery Charge Indicator

2 Getting Started

2-1 Power ON/OFF

Push 'Power' to turn power on.

While power is on, press and hold power button to turn off backlight.

2-2. Battery Charge

A. Install/Remove

Install the battery: While hold up 'Release latch', gently push battery to the slot.

Remove the battery: While hold up 'Release latch', hold grooves both sides with fingers and pull to remove the battery.

B. Charge the Battery

Charging with the battery installed

- ① Plug the A/C adapter into the power connector.
- ② Place the device on the universal cradle.

Charging the battery alone

- Place the battery downward to the charging connector on the Re-charger.

Battery indicator shows you three states of the battery below.



Charging



Fully Charged



Low Battery Indicator

Caution!

- Do not force to plug the device to I/O connector. It can be damaged.
- Charging with the battery installed: The battery indicator shows the battery status.

<LED indication>

Charging: red

Fully charged: green

2-3. RESET & HARD RESET

When system does not work properly, or does not response, press RESET button by the stylus pen. You will lose unsaved files and every programs opened will closed. It is same as RESET on Desktop. It is called 'RESET'.

Press RESET button with pressing and holding down-left button and down-right button. Then release RESET button and release others. Your device turns back to the default setting. Your device loses every program, documents, and options saved in RAM. It is called 'HARD RESET'.

Before HARD RESET, you should try RESET to recover your device. Do not try HARD RESET indiscreetly. HARD RESET does not delete files and documents in FileBox folder. Back up important data to FileBox folder. When FileBox folder is full, you can buy additional SD/MMC Cards for back-up.

3. Precautions(Guidelines for Safe and Efficient Use)

3-1. Product precautions

- 1). Fully be aware of User Guide and Safety directions before use your product.
- 2). Only use included or recommended accessories. Partner Tech Corp. is not responsible for using not authorized accessories.
- 3). Stay away your eyes from Bar-code reader.
- 4). Turn off your mobile phone before removing the battery.
- 5). Do not attempt to disassemble or modify your product. It can cause fire, injury, electric shock and other damages to you and your product.
- 6). Do not use your product in an area where a potentially explosive atmosphere exists.
- 7). Do not use when it storms or lightning.
- 8). Do not use in the pool, bathroom or where are wet. And do not deal with it with wet hands not to be gotten electric shock.
- 9). Do not leave your product in hot or cold places, such as in a car. Direct rays of the sun can also cause harmful influences on your product.
- 10). Keep out of pets and children's reach.
- 11). Use only designated battery charger. Other chargers may not be designed to the same safety and performance standards.
- 12). Do not use your product near medical equipment, when in, or around aircraft, and when you driving.
- 13). Do not expose your product to the security inspection in the airport.
- 14). Do not use it in high and humid temperature. It can harm your device severely.
- 15). Do not drop, throw or try to bend your product. It can cause serious damages. Use the leather case for protection.
- 16). Charge the battery fully before the initial use.

3-2. Directions for ActiveSync

A. At Initial Use

- ① Delete existing ActiveSync.
- ② Install Active Sync 3.8 or later version.

B. Appearing "unknown device" dialogue with USB port plugged.

- ① It can happen when you turn on your device with it is docked on the cradle.
- ② Undock your device from the cradle and dock it again.

C. Stopping at 'Connecting' status

- ① Undock your device from the cradle.
- ② Tap File -> Connection settings. Uncheck "Allow USB connection with this desktop computer" and then tap OK.
- ③ Tap File -> Connection Settings. Re-check "Allow USB connection with this desktop computer" and then tap OK.
- ④ Dock your device on the cradle.

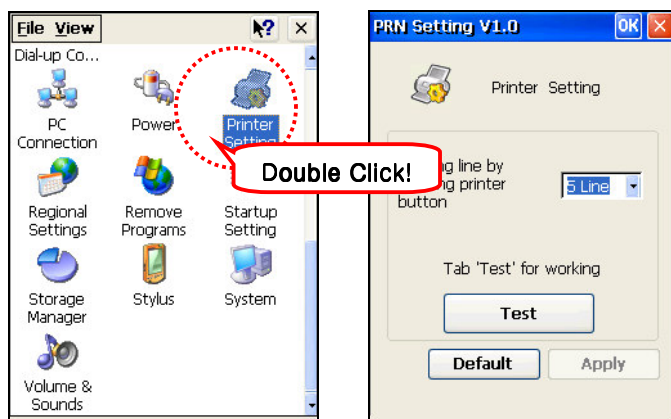
D. Several failure and 'Unknown Hardware Device' icon in PC tray.

- ① Undock your device from the cradle and reboot your PC. Then dock your device again.

4. Printer

4-1. Printer Setting

Start > Setting > Printer Setting



4-2. Printer Test

A. Printer Test Process

Tap **Test** to check the operation on setting window

B. Paper Inserting

Open the paper cover and insert papers

C. Paper Feeding

Press and hold Print button to feed paper without printing.

D. LED

Printing: Blue lighting

Paper Deficiency/Error: Blinking

※ In case of using other programs, please ask the production company of each programs.

5. Card Reader

5-1. Card Reader Setting

Start > Setting > MSR setting



5-2. Card Reader Test

Card Reader Test Process

- ① Open new memo in Word Pad.
- ② Read the magnetic stripe of a card to the end of it. Any direction is OK.
- ③ The result will be shown on new memo.

※ In case of using other programs, please ask the production company of each programs.

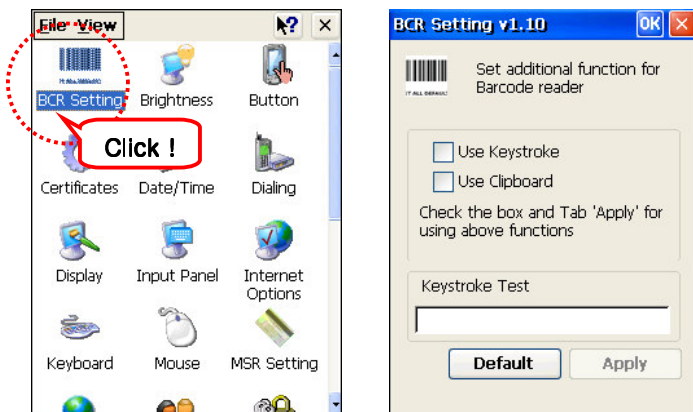
6. Bar-code Reader

6. Bar-code Reader

This is optional function. There can be products that have no Bar-code reader.

6-1. Bar-code Reader Setting

Start > Setting > BCR Setting



6-2. Bar-code Reader Test

Bar-code Reader Test Process

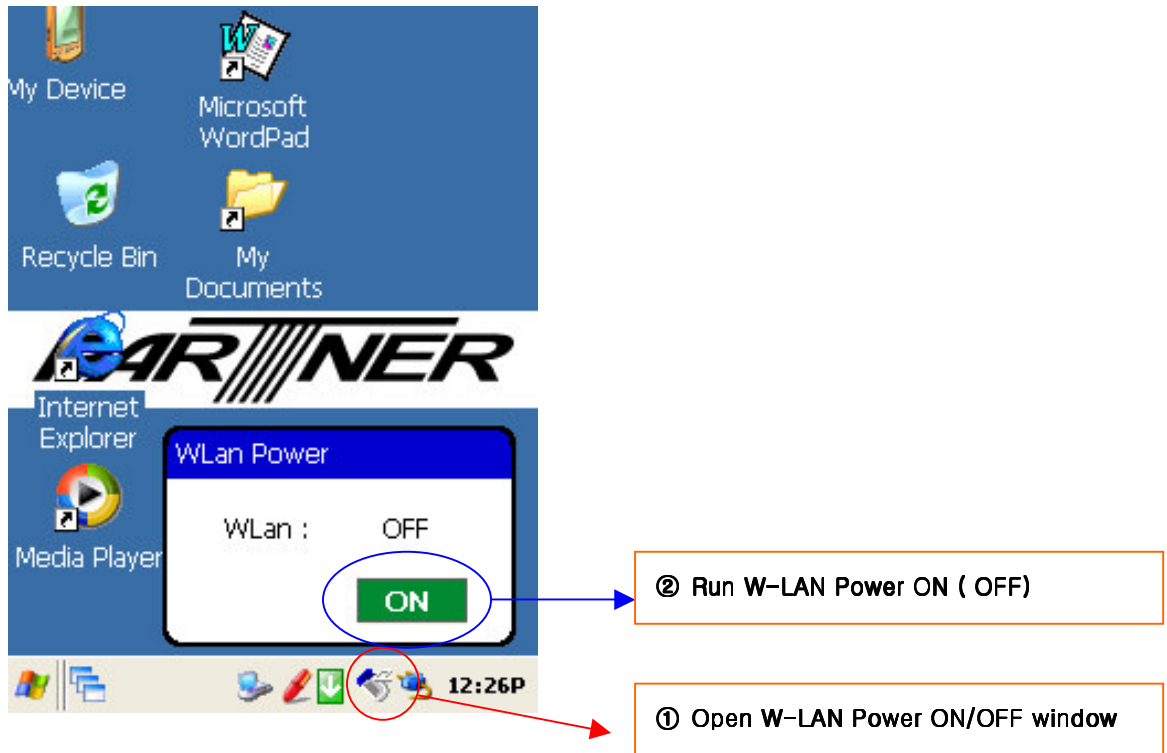
- ① Open Word pad
- ② Open new memo
- ③ Press Bar-code button to scan Bar-code.
- ④ The result will be shown on new memo.

※ In case of using other programs, please ask the production company of each programs.

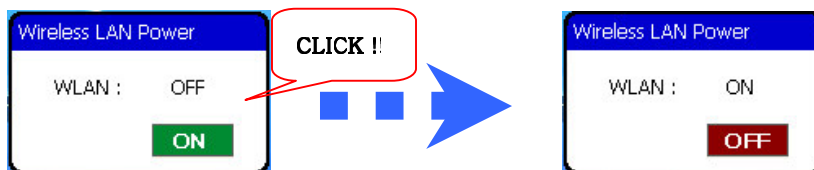
7. M1-POS W-LAN Setting Manual

✓ M1-POS W-LAN setting manual is described based on Full O.S Version.

1. Boot the M1-POS and start setting W-LAN.



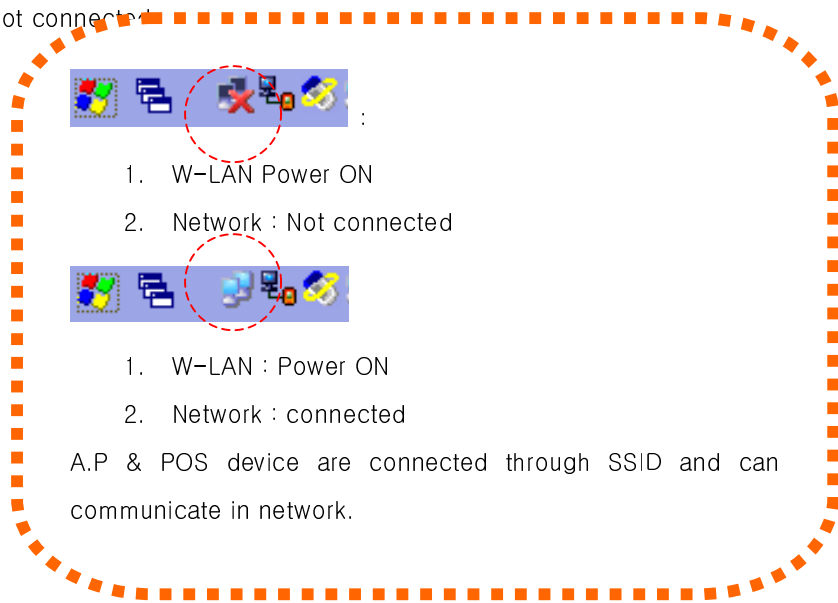
2. Click WLAN icon (①).
3. Click "ON" in "Wireless LAN Power" (②).
4. WLAN is now "ON".



- If W-LAN is applied to O.S, it automatically turns on the W-LAN Power. (Optional)
- Otherwise, turn on W-LAN Power described as above for proper use.

5. If W-LAN Power is ON, Zero-Config Icon (③) is created and W-LAN is available.

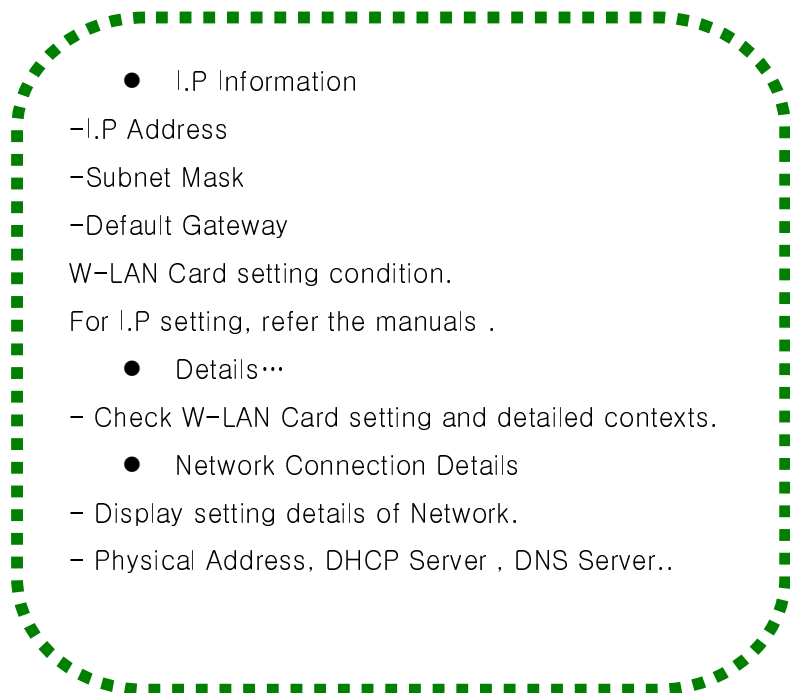
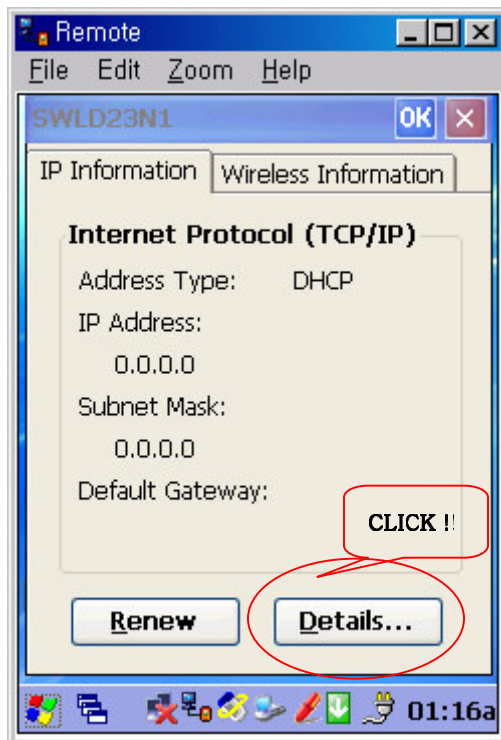
W-LAN Power is "ON", but "Network" is not connected.



A.P & POS device are connected through SSID and can communicate in network.

③ Zero-Config icon: W-LAN Power is "ON", but "Network" is not connected.

6. Double-click Zero-Config icon (③) and go to "SWLD23NI" setting window.



7. In "Wireless Information" menu, check "A.P Environment" for A.P connection," "Advanced setting", and "Network LOG".



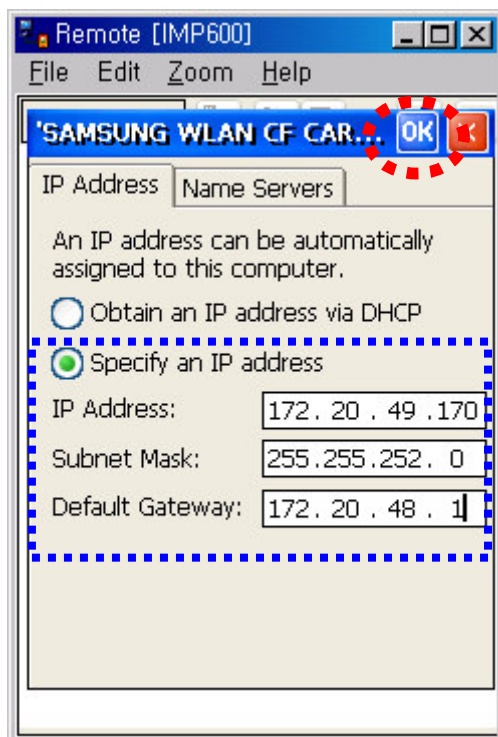
8. Wireless Information Menu Descriptions

- ✓ **Add New...** : Display available AP Lists in Network.
- ✓ **Status** : AP connection status in Network.
- ✓ **Signal Strength** : Display RF signal strength
Signal strength is divided into 6 steps from Strongest to weakest.
- ✓ **Notify when new networks available:**
When checking the Check Box, new available Network is shown in AP lists.
Although Wireless Information window is closed, if new AP is available, wireless information runs.
- ✓ **Connect** : connect to the AP
- ✓ **Advanced** : “ Advanced Wireless Settings “
Delete AP in Network or use advanced setting menu.
- ✓ **LOG** : “Wireless Network LOG “ A.P in Network or check logged MAC Address.

9. Choose Setting> Network and Dial-up Connections for IP Setting of W-LAN Card.

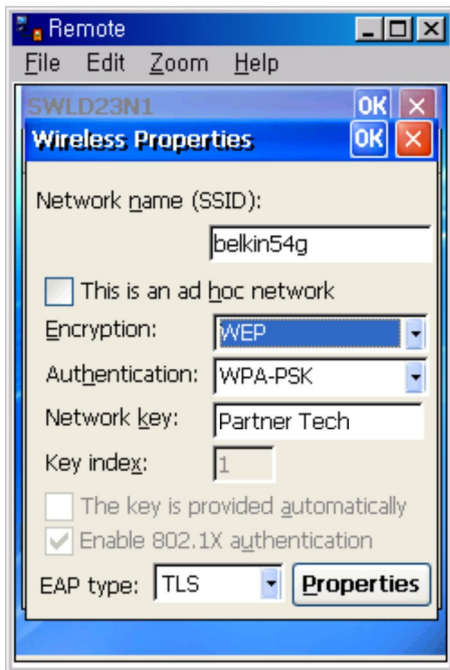


10. Select SWLD23N1 to go to I.P or Server I.P setting window.



- Obtain an I.P Address via DHCP:
 - For DHCP setting
 - DHCP (Dynamic Host Configuration Protocol)
- **Specify an IP Address :**
 - Set assigned I.P address
 - Set Subnet Mask in the Network
 - Set Default Gateway
- Click “ OK”, and finish IP setting.
- “Name Server “
 - DNS (domain name system) Setting
 - WINS (Windows Internet Naming Service) Setting

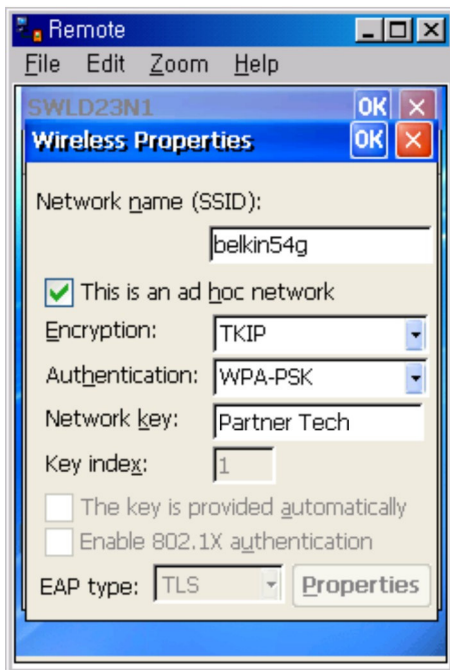
11. Network Certification Key setting window: Set if Network certification server is not used



- Network Key Setting
 - this is an ad hoc network: Check Box- not checking
 - encryption: WEP setting
 - Authentication: WPA-PSK setting
 - Network Key: Characters or numbers setting

- Network Key A.P Setting
 - Set certification key usage in AP
 - Check certification key usage for each AP

12. Network Certification Key Use setting Window: set if Network certification server is used



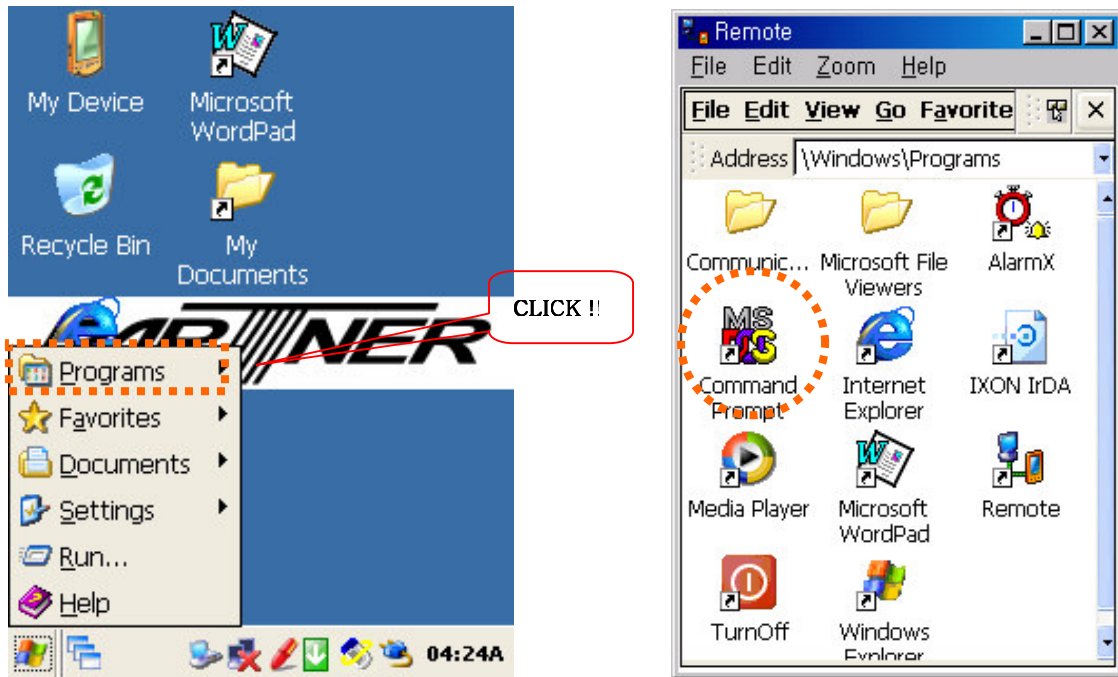
- Network Certification Server Setting
 - this is an ad hoc network: Check Box - checking
 - encryption: WEP Setting
 - If WPA-PSK is set, it is changed to TKIP automatically
 - Authentication: WPA-PSK Setting
 - Network Key : Characters or numbers setting

- Network Key A.P Setting
 - Set certification key usage in AP
 - Check certification key usage for each AP

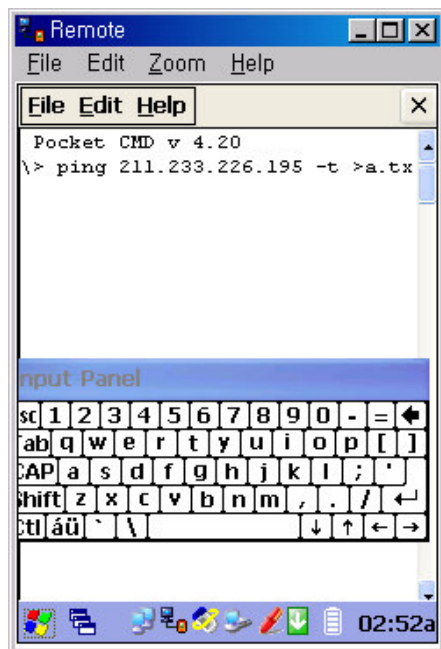
- Network Certification Key Use improves security by encryption.
- When using Network Certification Key, it reduces system errors from external interference of W-LAN.

13. Network Connection Test can be done through IP Ping Test.

Select Start > Programs > Command Prompt.



14. In Command Prompt, type I.P Address for ping test.



- Ping Test
 - ping 211.233.226.195 -t >a.txt
- ping 211.233.226.195 : I.P for test
 - A.P , POS Server ,VAN Server, IIS Server ..etc
- -t : for continuous test
 - To stop Ping Test: "CTRL" +"C"
- >a.txt : store ping test results to text file
 - a.txt file is in my computer and can be checked with WORDPAD.
- Ping Test results are used for "RF" pause in network, or network status for AP or server.

15. Network status check with Internet Explorer

- After Network setting, Internet explorer can be used to check Networking status
- Fixed I.P: type assigned PDA I.P address, Network key and connect
- DHCP: set DHCP and connect. (if Network key uses, type it and connect)
- If Internet explorer is not exist, do Ping Test for Networking status
- For page reload, window pause or change delay depends on the network environment or numbers of W-LAN in AP

- For each A.P, Proper W-LAN numbers are below 13 EA (check environment for A.P model)
- At least 2 EA AP setting environment is needed for roaming from one AP to the other.

16. Normal internet explorer window



17. W-LAN Network Environment

If the PDA is used W-LAN environment, environmental factors are very important on A.P Setting condition (Channel Power, Roaming condition) or Network Server (IIS Server, VAN Server). When applying fields in PDA, you should set the network environment at the same time.

8. Connection to a Computer

Using Microsoft ActiveSync, you can synchronize the information on your personal computer with information on your M1-POS. Synchronization compares the data on your PDA with your personal computer and updates both devices with the most recent information

To establish a partnership with a PC, you need to install Microsoft ActiveSync on your PC.

Minimum Requirements for Microsoft ActiveSync 3.8 (or 4.2 version) Installation

- ✓ Microsoft Windows XP, 2000, ME, Windows NT Workstation 4.0 with SP6 or later, or Windows 98
- ✓ Microsoft Outlook 98 or later required for synchronization to the desktop or portable computer of e-mail, calendar, contacts, tasks, and notes. (Outlook 2003 is recommended)
- ✓ Microsoft Internet Explorer 4.01 SP1 or later
- ✓ Hard-disk drive with 12 to 65 MB of available hard-disk space (actual requirements will vary based on selection of features and user's current system configuration)
- ✓ Available 9- or 25-pin communications port (adaptor required for 25-pin communications port), infrared port, or USB port (available for Windows 98, Windows Me, Windows 2000, and Windows XP only)
- ✓ VGA graphics card or compatible video graphics adapter at 256 color or later
- ✓ Keyboard
- ✓ Microsoft Mouse or compatible input device

Microsoft ActiveSync 3.8 (or 4.2) Installation Environment and Necessary Files

- ✓ Microsoft ActiveSync 3.8 install file : MSASYNC380_E.EXE

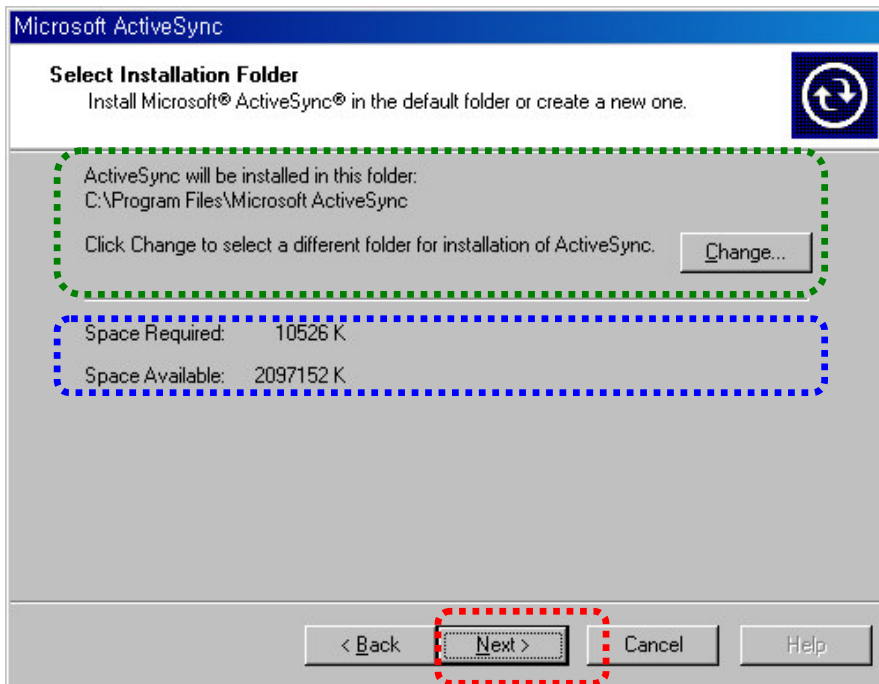
- Download URL :

https://www.microsoft.com/windowsmobile/downloads/eula_activesync38_1033.msp?productid=2

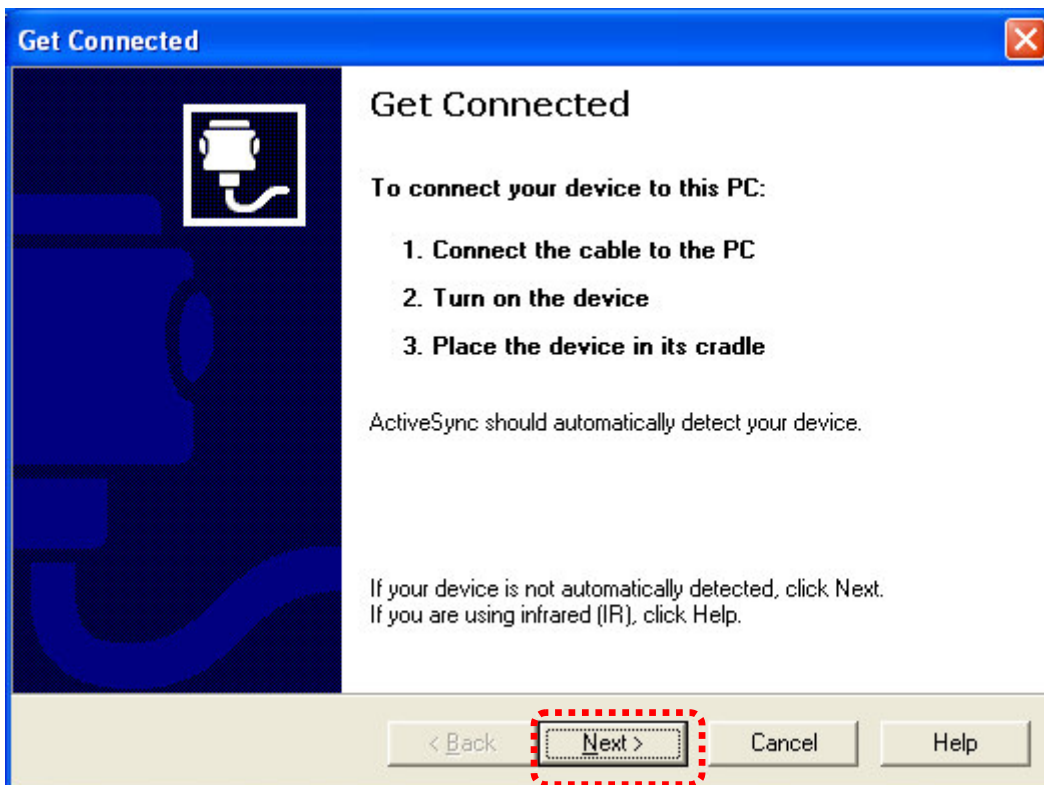
- ✓ PC OS : Microsoft Windows XP Professional Version 2002 Service Pack 2



1. Click the "Next"



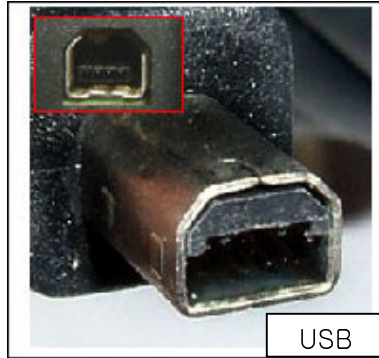
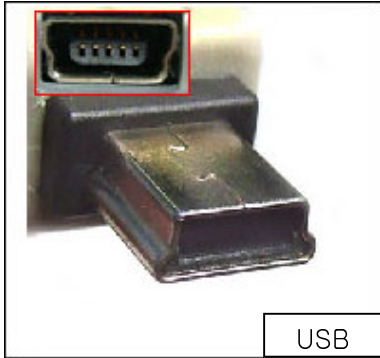
2. ActiveSync will be installed in the folder, and it displays required space and available space. You can specify the different folder by selecting Change button. And click "Next > " to go next step.



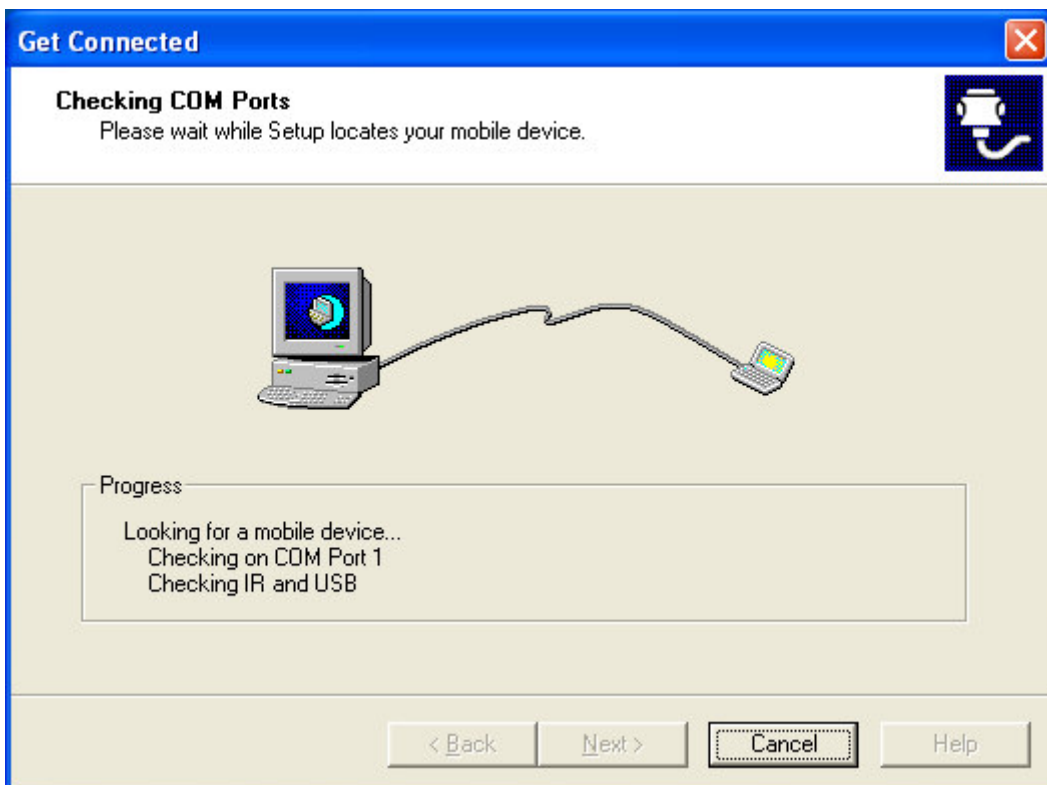
3. Connect the M1-POS with USB cable -> connect USB cable to PC -> turn on M1-POS, and click "Next".

How to connect the M1-POS with the USB cable

- ① Connect the M1-POS Mini USB Port to the USB 1 Cable
- ② Connect the M1-POS to the Cradle, and connect the Cradle USB Port to the USB 2 Cable



√ color of USB Cable may be changed.

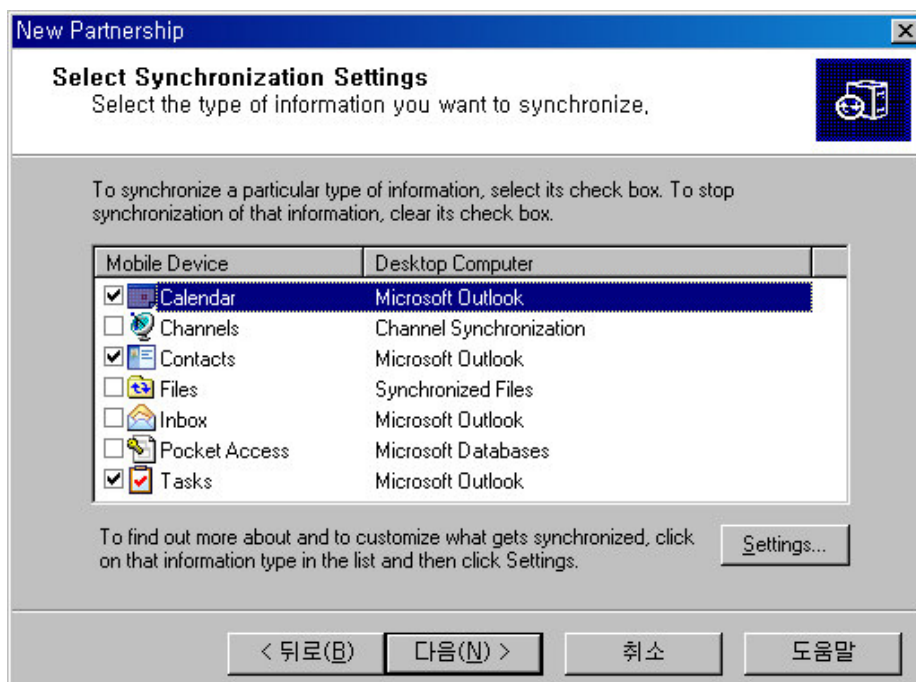
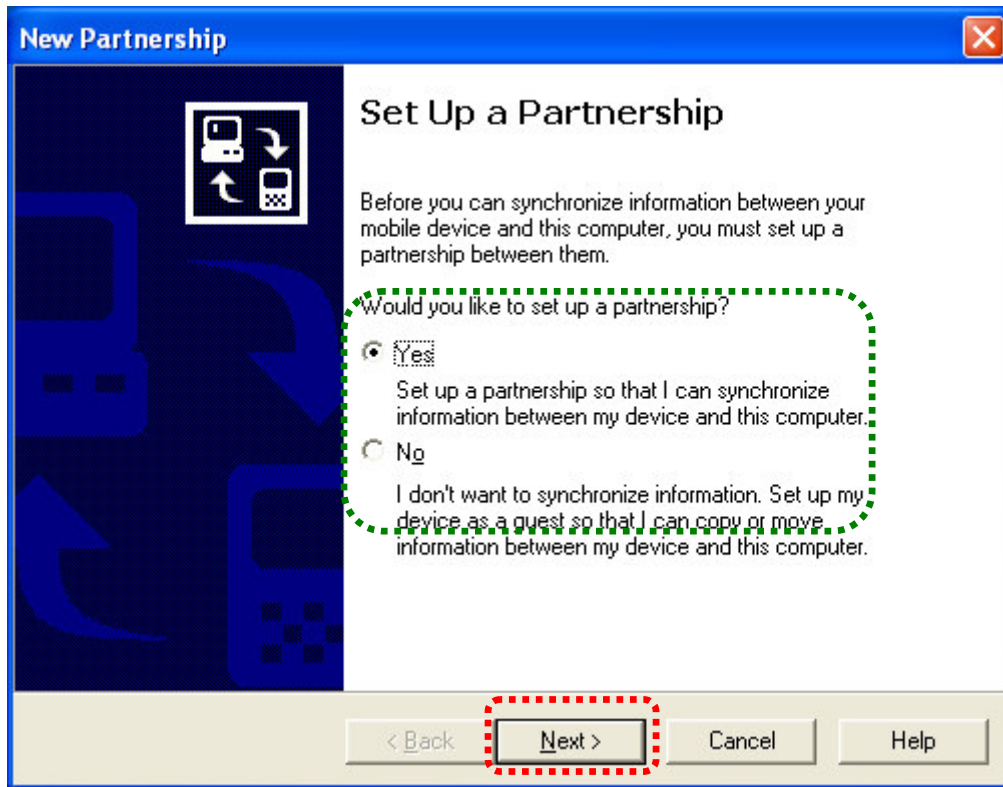


4. Checking the Port to recognize the M1-POS. click "Next" to proceed.

√ If connection failed between the M1-POS and PC, follow the steps below.

- Copy wceusbsh.inf, wceusbsh.sys files from C:\WProgram Files\Microsoft ActiveSync\Wdrivers, and paste them in C:\WWINDOWS\system32 and C:\WWINDOWS\system32\Wdrivers.

If changed the specified folder by using "change" button during installation, the files will exist in user-defined folder in Wdriver



5. Select “Yes” or “No” for setting up a partnership between PC and M1-POS, click “Next” to go to next.

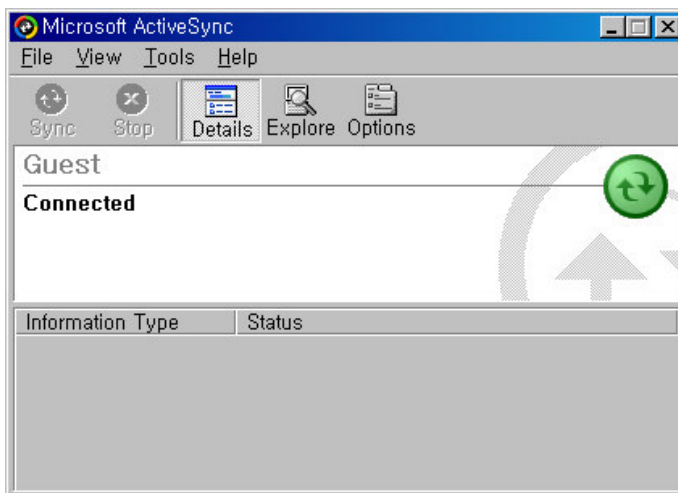
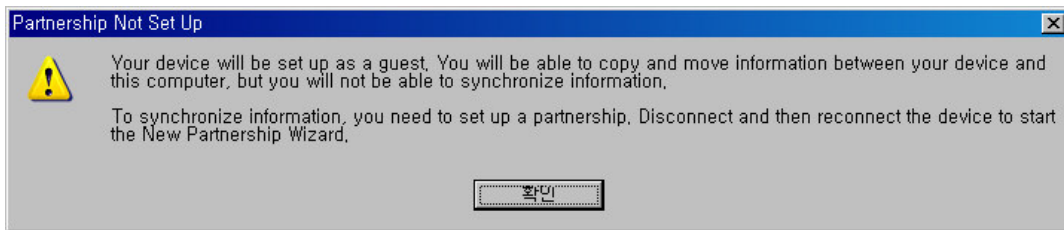
If selected “Yes”.

- Synchronization will be made between M1-POS and PC, so that can keep up to date for Outlook Data such as Calendar, Contacts, Mail etc, and user usually sets up a partnership with her or his main PC.

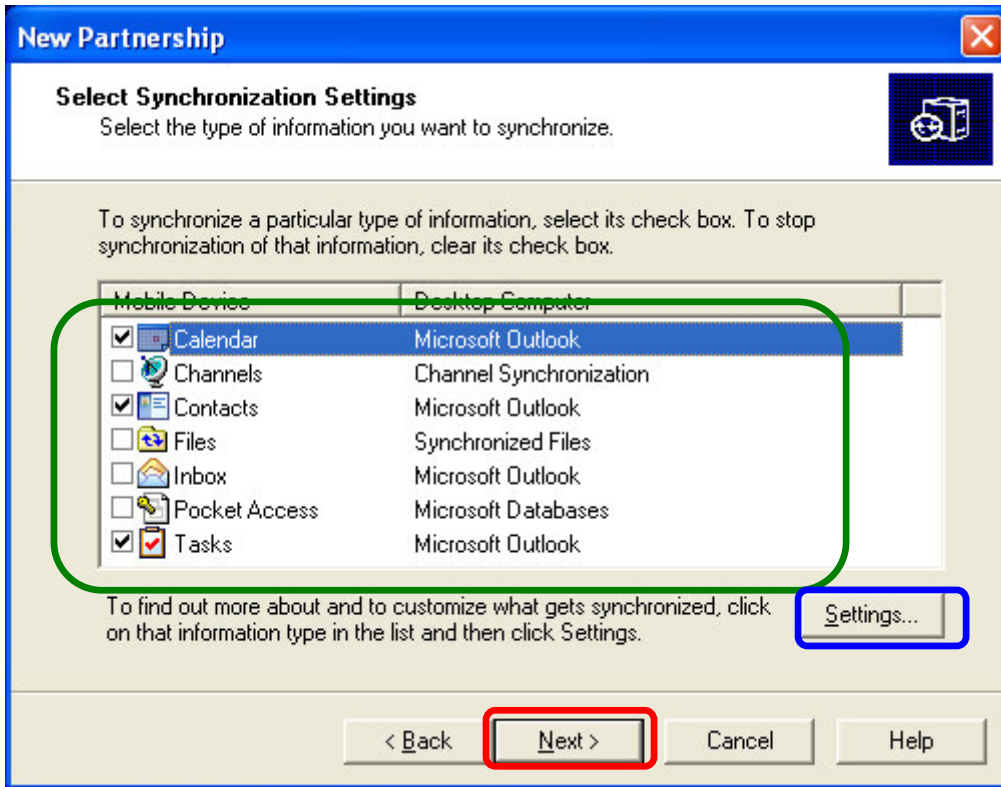
If selected “No”.

- Program add/remove and file copy/move are only allowed between M1-POS and PC.

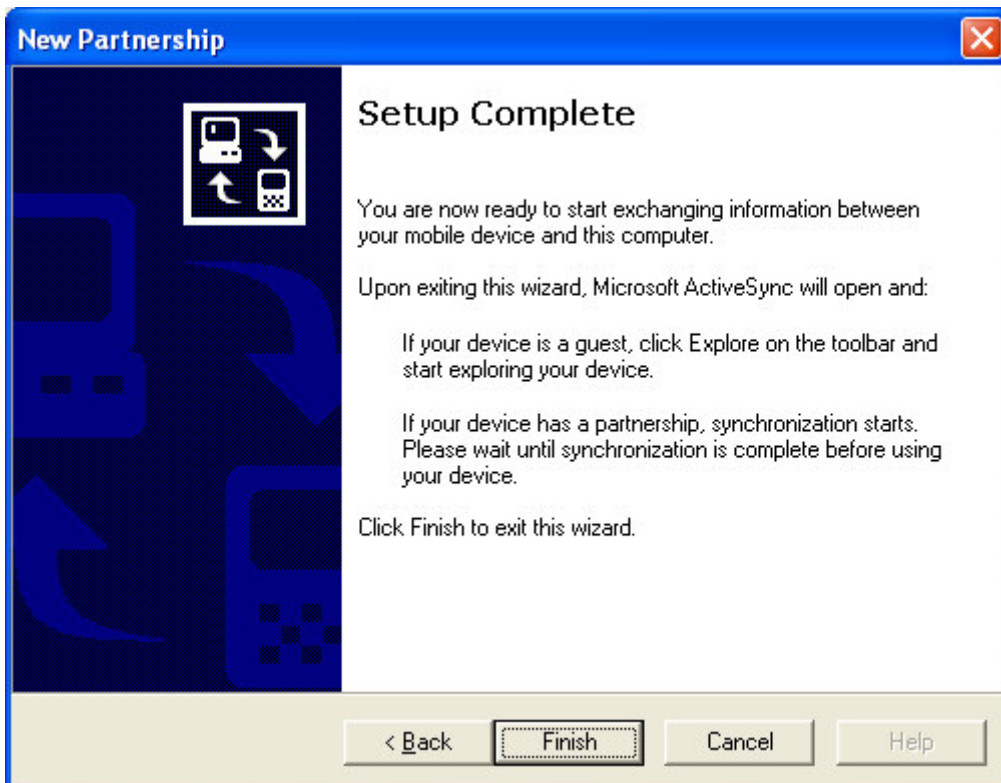
If selected “No”, warning screen pops up and connected with a Guest, therefore, select “Yes” to explain further.



✓ Connected screen with not setting up the partnership



6. Synchronization setting options appeared; you can select “Settings” to set it for detailed synchronization. Or you can make it later, and click “Next” to go on.



7. ActiveSync setup completed. Select “Finished” button and ActiveSync will be started, and

synchronization with items selected above will be performed.

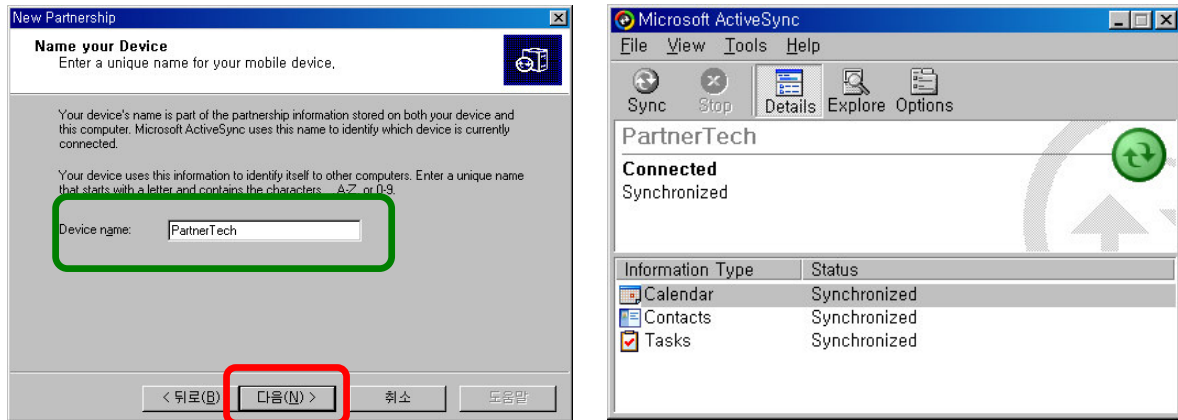
8. ActiveSync process is done and screen is displayed.

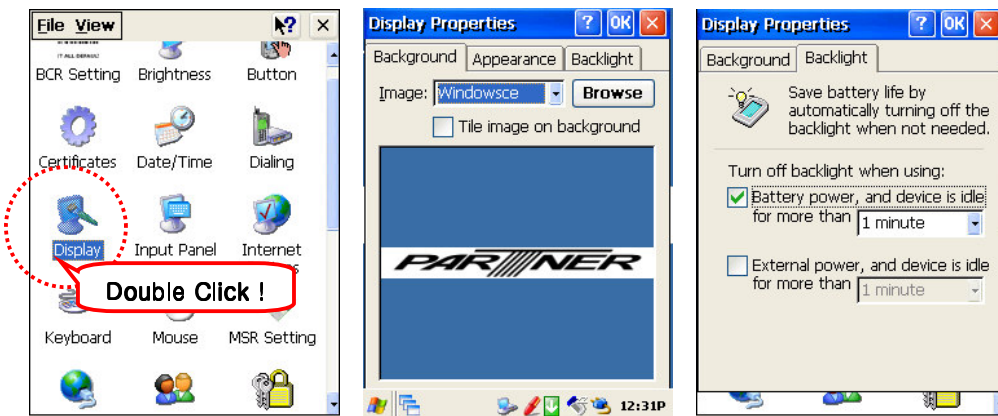
- If it is the first synchronization, follow the process described above and use it. If existing partnership is gone or wants to have new partnership, the following screen will be appeared

The name of M1-POS is already existed as Mobile device, therefore, provide new name and press "Next", then synchronization will be done with new name.

9. Device Setting and Optimizing

9-1. Display

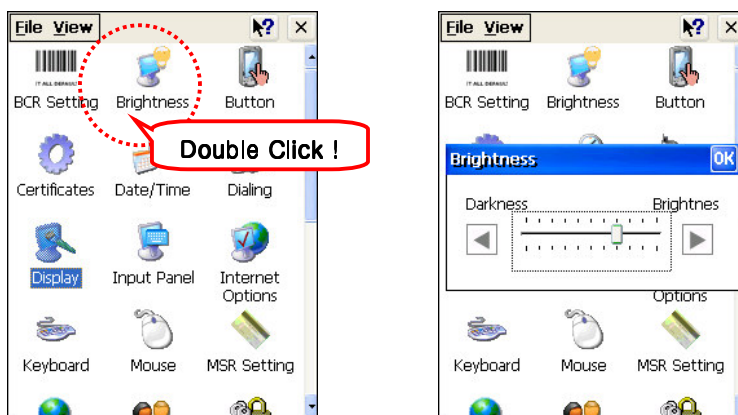




Background image

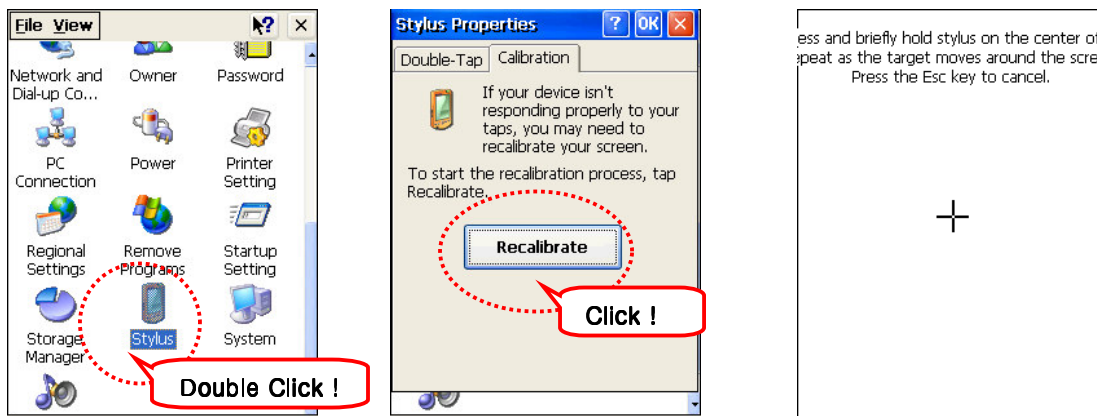
Backlight time-out

9-2. Brightness level



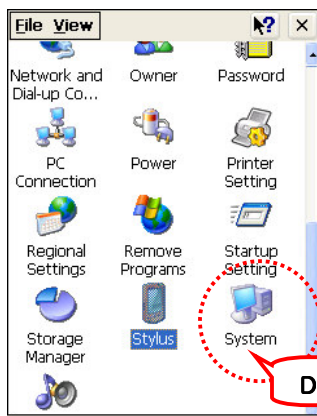
9-3. Stylus Setting

When stylus does not operate correctly, you can tap Re-Align to revise the coordinates.



Tap Align for revision.

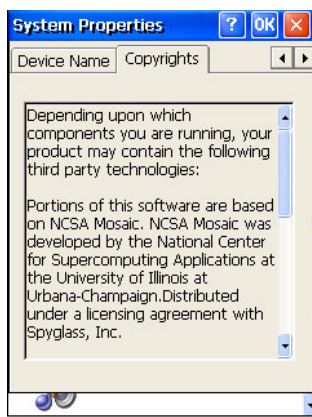
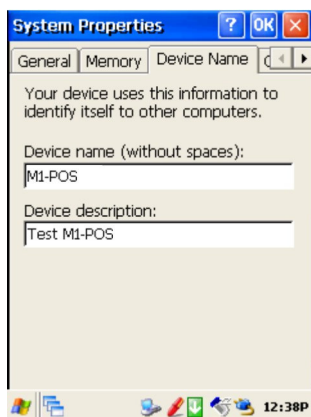
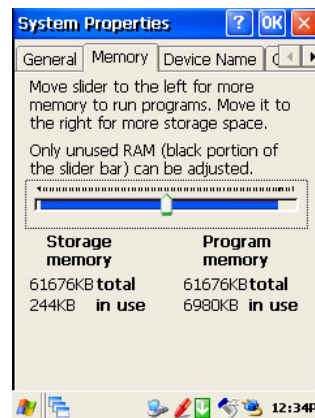
9-4. System



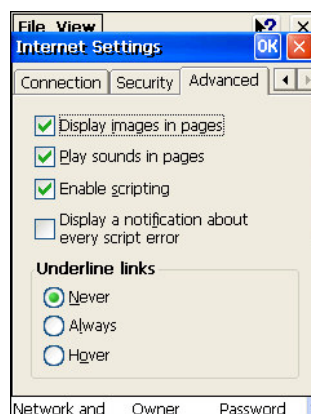
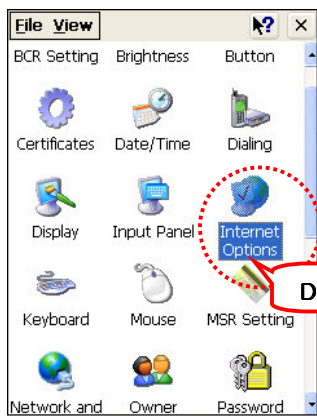
Basic system information



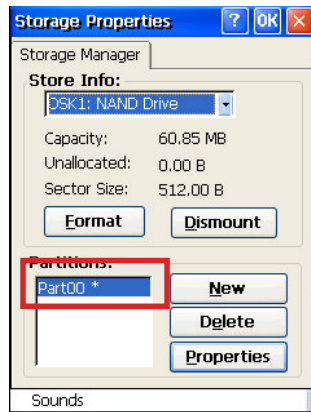
Storage memory & Program memory setting



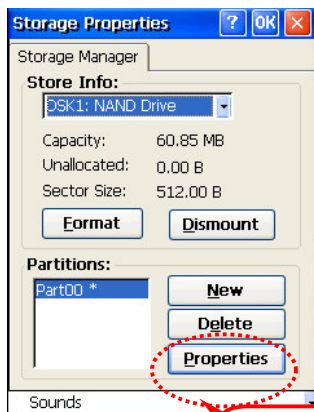
9-5. Internet Option



9-6. Storage management (SD/MMC formatting)

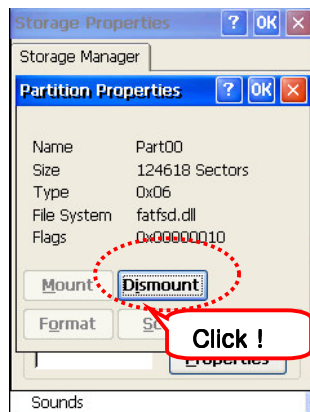


PART00 * : '*' means that SD/MMC is mounted on the system. To format the storage, you need to isolate it. Loaded SD/MMC disjunction



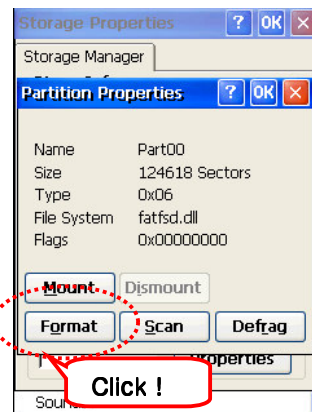
Tap Property

Click !



Tap Isolation

Click !



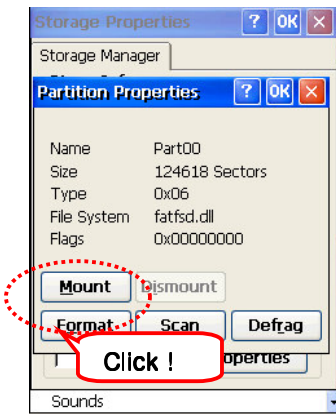
Click !



Check !

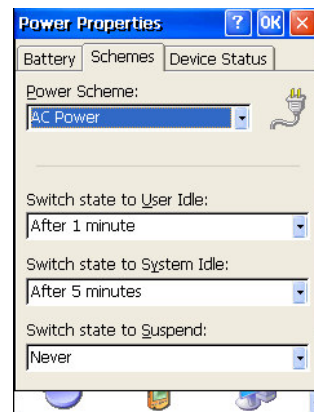
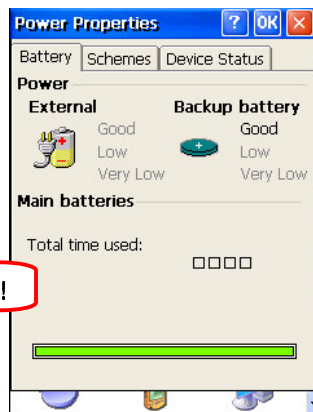
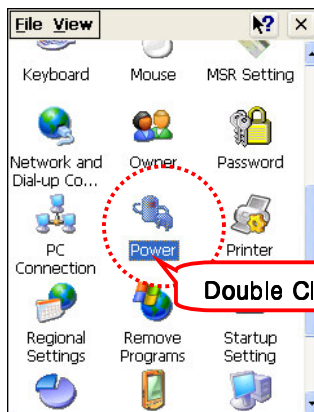
Click !

Option is needless to change. Tap Start to start formatting. Check 'Quick format' to format quickly.

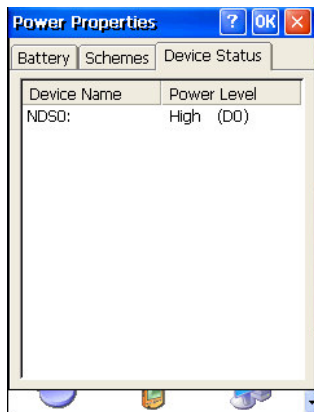


Tap Mount. (Otherwise, you cannot see it in File explorer.)

9-7. Power



Choosing Sleep status.



Showing Device status

9-8. Memory

You can use two kinds of memory for M1-POS(Built-in RAM and SD Card).

1) Built-in RAM(Random-Access Memory)

RAM is volatile memory divided into Storage memory and Program memory and OS assigns the proportion. But, OS may not control memories in case there's not enough memory space. If you encounter the message Storage or Program memory shortage, follow directions below.

※ How to free Storage memory?

- Move needless files and programs to Web folder. Files in the folder do not use storage memory.
- Buy additional SD Card and move files to a SD Card.
- Delete unnecessary files.
- Delete temporary internet files for the Offline browsing in File Explorer.
- Remove programs you no longer use.

※ How to free Program memory

- Stop programs you are not currently using. Most programs are automatically closed but it often does not work.
- As explained above, free storage memory. Empty storage memory can be assigned as program memory.
- Undock the device from the cradle and remove SD Card.

2) SD(Secure Digital) Card

SD Card is a small and removable flash memory that allows you to store more data. You can back-up important data and transfer big-sized data to other devices. SD Card is available in many electronic product shops.