

# Instructions For Using The Wireless Desktop



## Compatible Equipment

Compatible with all IBM-compatible PCs running MS Windows and equipped with PS/2 interface.


## Compatible with Windows Operating Systems:

Windows XP, 2000, ME, 98SE, 98, 95, and NT4.0

### Please Review this Checklist

#### Your System Includes:

- Wireless keyboard — 1 unit
- Receiver — 1 unit
- Wireless mouse — 1 unit
- AAA size batteries — 4 units
- Device Driver (on CD-ROM) — 1 unit
- Instruction manual — 1 unit

 Please read the instructions for use prior to installing, operating, or using the wireless desktop system.

## Please Note the Following:






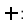
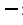
This product should not be used aboard aircraft as its electromagnetic signals may interfere with aircraft instruments.  
Please do not touch product wires during thunderstorms as airborne electrical charges greatly increase the sensitivity of system reception. Touching the wires may cause an electric shock. Avoid removing the top or bottom shell of this product as this may cause damage to the product. To avoid damage, please make sure your hands are dry prior to using this product.  
To avoid damage, please do not allow the product to come into contact with liquids or metal objects. To avoid damage, please do not shake or otherwise agitate this product.  
Please do not store or use this product in high temperature, high humidity, or dusty environments. Do not leave exposed to direct sunlight.  
Do not stack or place other objects on the product.  
Do not put the product in a position where it is liable to fall or is not secure.  
When connecting this product's receiving device to your PC, take care not to use force when making the physical connection to ensure a stable connection.  
Do not pull on the receiver wire with undue force in order to prevent loss of contact.  
The manufacturer cannot accept responsibility for loss of data or damage to application programs due to use of this product in a manner contrary to that described in the user's manual. Please use this product in accordance with instructions.  
Please do not clean the surface of this product with volatile cleaning compounds.  
This product was not designed for use in specialized environments, such as where medical, nuclear power generation, aircraft, power transmission, or other life services-related equipment is being used. The manufacturer will not accept responsibility for harm to human life or social services / activities resulting from use of this product in such environments.

## Proper Use of This Product

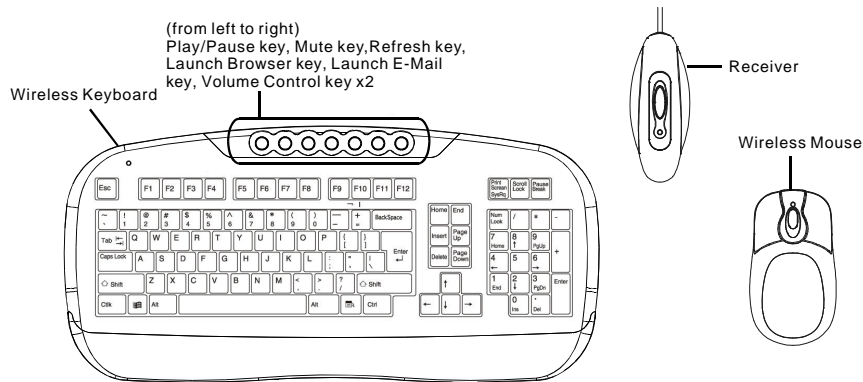
When using this product, fully extend your wrists and maintain your fingers in a curved, natural position.  
Extend your hands fully over the keyboard. Correct typing posture requires that hands be kept at a minimum 70-degree angle to the keyboard.  
Rest for 1 to 2 minutes after every 15 minutes of use.  
To avoid hand discomfort resulting from extended use, we recommend the use of an additional hand rest pad.  
Please adjust your chair to the most appropriate height both for viewing the computer monitor and to ensure the most comfortable working environment.  
The use of a PC monitor filter is strongly recommended for viewing comfort.  
The base of the keyboard incorporates extendable props, which may be used to adjust the height of the keyboard. Please adjust these to meet our individual preferences.

## Product Features:

### PS/2 Standard Keyboard Hotkey Functions

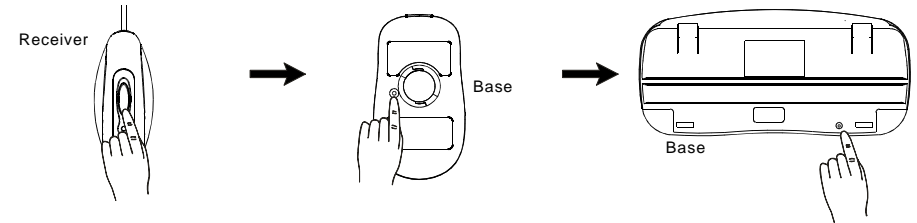
-  :Multimedia Application Play / Pause Function
-  :Mute (sound off)
-  :Launch E-Mail Application
-  :Launch Internet Browser Application
-  :Refresh Screen
-  :Increase Volume Level
-  :Reduce Volume Level

Extendable props on the keyboard may be adjusted in two stages to optimize the position for the user.



### Connect the wireless mouse & keyboard to your computer:

1. Press the button located on the receiver
2. Next, bring the wireless mouse into close proximity to the receiver and press the "Reset" button located on the base of the mouse unit.
3. Next, bring the wireless keyboard into close proximity to the receiver and press the "Connection" button located on the keyboard panel.



All process within 30 sec.

Under normal conditions, the LED light located on the receiver module should come on automatically when either the keyboard or mouse are used.

### Normal expected battery life for the keyboard and mouse units:

Battery life is greatly affected by the length of time these units are in use. Under "normal" usage conditions, you may expect unit batteries to last between three and six months. The environment within which the units are used will also affect the length of battery life.



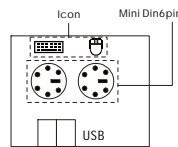
### ⚠ Please Note!

- Please use the receiver module at a minimum distance of 20 cm away from both the computer and monitor.
- Wireless keyboard and mouse function best when units are used in relatively close proximity to the receiver module.
- A desktop made of iron will negatively impact wireless keyboard and mouse operations.
- Special hotkey commands (e.g., screen brightness control) built into notebook or PC keyboards will not be accessible using the wireless keyboard

## Configuring Your Keyboard and Mouse

### Connecting the keyboard and mouse

1. Firstly, please turn off the power to your computer.
2. Properly install batteries into the keyboard and mouse (make sure positive and negative poles are correctly oriented).
3. Please confirm the position of your computer's keyboard port (Mini Din5pin, also known as the PS/2 port) and mouse port (mini Din6pin, also known as the PS/2 port). Many computer manufacturers attach a diagram of keyboard and mouse ports to the back of their computers.



**NOT:** Keyboard and mouse ports look similar and may be easily confused. Please take care to differentiate using their color and schematic diagram.

4. Please connect the connector port on this product (Mini Din6pin) to the keyboard and mouse ports on your computer.
5. Restore power to your computer.
6. Once your computer has booted up, open the Windows control panel, click on System and open the Installation Manager dialogue box. Click on "confirm".

## Procedures to Install and Uninstall Operating Software

### NOTE

Prior to installing device driver onto your computer, we recommend removing other mouse or keyboard device driver presently installed on your computer to avoid system conflicts and associated problems.

Users of WindowsXP, 2000, and ME do not need to install any additional driver software to operate the wireless units properly. Users of Windows98SE, 98, 95, and NT4.0 must install the included software driver in order for the wireless units to function properly.

### ■ Software driver installation procedures:

1. Please insert the CD-ROM provided into your computer's CD-ROM drive. The installation program should begin automatically. If not, click on the "Start" menu located on your Windows desktop, choose "Run", and enter the following into the Run dialogue box: D:\Disk1\Setup.exe. If your CD-ROM drive is designated as something other than "D", enter the correct letter instead.
2. Click on the "Next" button.
3. Click the "Yes" button.



4. Enter your name and your company name (if applicable).



7. Choose the target directory.

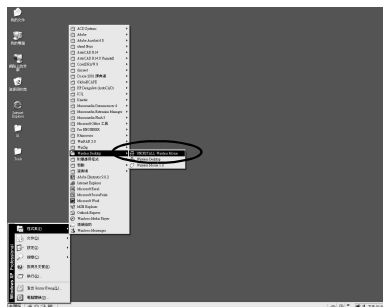


9. Click the "Next" button.



To Remove / Uninstall Driver Software:  
Please do the following

1. From the "Start" menu, select the "Program" directory. Click on "Wireless Desktop", then "Uninstall Wireless Mouse".



5. Installation of the keyboard driver is complete. Click to install the wireless mouse driver.



6. Start installation of the mouse driver.



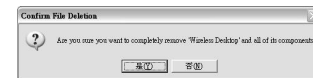
8. Select or create a target folder for the installed driver program.



10. Re-Boot Windows



2. Request for Confirmation. Click the "Yes" button.



3. Uninstallation complete. Press the "OK" button.



## Product Specifications:

Item	Specification		
	Keyboard	Mouse	Receiver
Dimensions( L X W X H )	459x219x30 mm	125x70x40 mm	105x42x67 mm
Weight	900 g	100 g	110 g
Interface	PS/2		
Battery Type / Units	2 AAA	2 AAA	—
Frequency	26.96-27.28Mhz	27.195-27.045Mhz	—
Security ID	256 sets	256 sets	—
Distance	1.5 m	1.2 m	—
OS	Windows 98/NT/2000/ME/XP		
Agency Approval	FCC,CE		

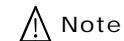
## Maintaining your hardware and resolving basic problems

Should the ball on the mouse not roll smoothly, open the ball enclosure, remove the ball and wipe it thoroughly using a clean, lint-free cloth. With a cotton swab slightly moistened with industrial alcohol, clean the three roller contacts located inside the enclosure. When finished, return the ball to the enclosure and replace the cover.

If using this product in an environment with one or more other wireless mouse or keyboard devices affects normal functions, try switching the operating channel to avoid transmission frequency conflicts.

### FEDERAL COMMUNICATIONS COMMISSION

This device complies with Part 15 of the FCC Rules. Operation is subject to the following two conditions: (1) this device may not cause harmful interference, and (2) this device must accept any interference received, including interference that may cause undesired operation.



This equipment has been tested and found to comply with the limits for a Class B digital device, pursuant to Part 15 of the FCC Rules. These limits are designed to provide reasonable protection. This equipment generates, uses and can radiate radio frequency energy and, if not installed and used in accordance with the instructions, may cause harmful interference to radio communications. However, there is no guarantee that interference will not occur in a particular installation. If this equipment does cause harmful interference to radio or television reception, which can be determined by turning the equipment off and on, the user is encouraged to try to correct the interference by one or more of the following measures:

- Reorient or relocate the receiving antenna.
- Increase the separation between the equipment and receiver.
- Connect the equipment into an outlet on a circuit different from that to which the receiver is connected.
- Consult the dealer or an experienced radio/TV technician for help.

Shielded interface cables must be used in order to comply with emission limits.

Changes or modifications not expressly approved by the party responsible for compliance could void the user's authority to operate the equipment.

## Warranty

Name :			
Tel		Fax	
E-mail :			
Address :			
Model number		Serial number	
Retailer Stamp			
Purchase Date : Y M D			

## 保證書

客戶名稱 :			
電話 :		傳真 :	
E-mail :			
地址 :			
型號 :		序號 :	
經銷商蓋章處			
購買日期 : 年 月 日			

# Wireless Desktop User Manual



User Manual

中文使用說明書