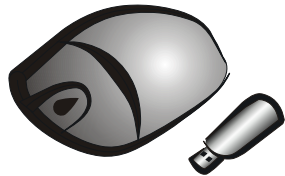


8 CM

Wireless Travel Mouse



User Manual

PT-2002-Y
PT-2002-Y1
PT-2002-Y2
PT-2003-A
PT-2003-D

FEDERAL COMMUNICATIONS

This device complies with Part 15 of the FCC Rules. Operation is subject to the following two conditions: (1) this device may not cause harmful interference, and (2) this device must accept any interference received, including interference that may cause undesired operation.

Note

This equipment has been tested and found to comply with the limits for a Class B digital device, pursuant to Part 15 of the FCC Rules. These limits are designed to provide reasonable protection. This equipment generates, uses and can radiate radio frequency energy and, if not installed and used in accordance with the instructions, may cause harmful interference to radio communications. However, there is no guarantee that interference will not occur in particular installation if this equipment does cause harmful interference to radio or television, which can be determined by turning the equipment off and on, the user is encouraged to try to correct the interference by one or more of the following measures:

- Reorient or relocate the receiving antenna.
- Increase the separation between the equipment and receiver.
- Connect the equipment into an outlet on a circuit different from that to which the receiver is connected
- Consult the dealer or an experienced radio/TV technician of help.

Shielded interface cables must be used in order to comply with emission limits.

Changes or modifications not expressly approved by the party responsible for compliance could void the user's authority to operate the equipment.

1

- **Compatible Equipment**
Compatible with all IBM-compatible PCs and equipped with USB interface.

- **Compatible with Windows Operating Systems:**
Windows XP, 2000, ME, 98SE

If the travel mouse is not functional for compatibility problem, please up date your operation system.

Please Review this Checklist

Your System Includes:

- Receiver _____ 1
- Wireless mouse _____ 1
- AAA size batteries _____ 2
- Instruction manual _____ 1

Please read the instruction for installing, operating, and using the wireless Travel Mouse.

- **Features of Travel Mouse**
 - Compact and ergonomic design
 - Easy to carry for users to travel around
 - USB interface to enable Plug and Play
 - Low power indication

Product Number	
• Wireless mouse	PT-2002-MV PT-2002-MY PT-2002-MZ PT-2003-MA PT-2003-MC
• Receiver	PT-2002-RSUK

2

Maintaining your hardware and resolving basic problems

If the mouse doesn't work smoothly and properly, please try to do the following improvements:

- Check the battery and replace with a new one when the LED of the mouse turns from green to red.
- Adjust the angle of the external antenna to get better performance.
- If your cursor is controlled by another Travel Mouse in an office or multi-user environment, please proceed "Switching Security ID of Travel Mouse" procedure accordingly.
- Please check the USB plug of the receiver is properly installed into the USB socket of your Notebook / Laptop.
- Please keep iron-made office partitions, computer chassis, monitors, zip-drives, speakers, and switching power supply, 20 cm at least away from the mouse and receiver.
- If the above points don't improve your utility, please move the mouse closer to the receiver to avoid any unidentified interferences.

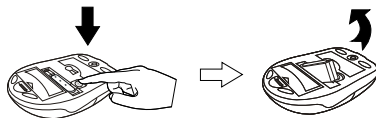
3

M/N :

Quick Installation Guide.

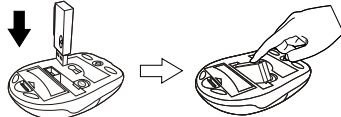
Taking the receiver out of mouse

Press the reject button on the bottom of the mouse
Take the receiver out of the compartment



Storing the receiver into mouse

1. Place the receiver 90° to the compartment. 2. Press the receiver into the compartment



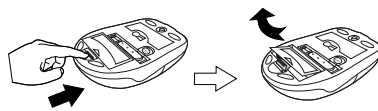
when the receiver is in the compartment of the mouse, power supply is automatically off to stop power consumption



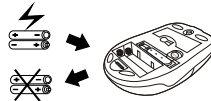
4

Battery replacement

1. Open the battery cover of mouse.



2. Take out the exhausted battery and replace with a new one.



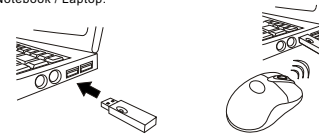
The LED of Travel Mouse will turn red when its battery is low.



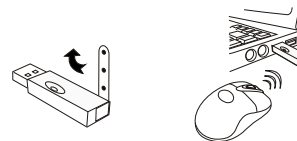
5

How to install Travel Mouse to your Notebook / Laptop

1. Take out the receiver from the mouse compartment. 2. Move it and enjoy the freedom. Plug it into USB port of your Notebook / Laptop.



If your Travel Mouse doesn't work smoothly, please adjust the angle of the antenna stick on the side the receiver to improve it.



6

Switching security ID of Travel Mouse to avoid different users interference under multi-users environment.

1. Press the connection button on the upper side of receiver. 2. Press the reset button on the bottom of mouse.



3. Waiting for 5 seconds and enjoy it again.



ID code will be renewed to default one each time when power is on.

When your notebook is under sleeping mode or stand-by mode, your USB ports might not remain power-on, which lead to replace by default ID. Please repeat above steps



7