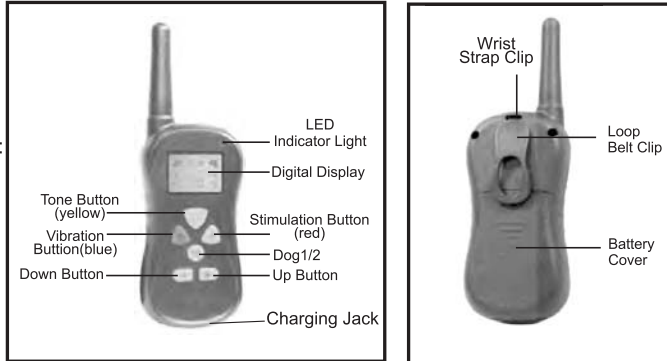


Key Definitions

Remote Transmitter: Transmits the signal to the Receiver Collar.

Tone Only Button (Yellow): Sends an audible tone to the collar. No stimulation is delivered.

Stimulation Only Button (Red)/Vibration Only Button (Blue): Delivers stimulation/vibration through the Contact Points on the Receiver Collar at the level shown on the Digital Display. When held down for 10 consecutive seconds, the Transmitter will “time-out”, and stimulation/vibration cannot be delivered for 5 seconds. You must release and press the button again after the 5 second time-out period, before additional stimulation/vibration can be delivered.



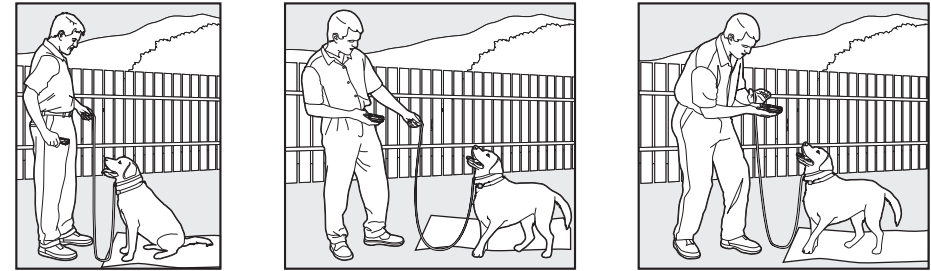
Stim/Vibra Down Button (-): Decreases Stimulation/Vibration Level by 1.

Stim/Vibra Up Button (+): Increases Stimulation/Vibration Level by 1.

Digital Display: Indicates which function the Transmitter is currently performing, Stimulation/Vibration Level, pairing mode, dog channel 1/2 and battery status. See Prepare the Remote Transmitter section for more details.

Transmitter Indicator Light: Red indicates Transmitter is performing the current chosen function.

Charging Jack: For connecting the charger.



Eliminating Unwanted Behavior

Jumping Up

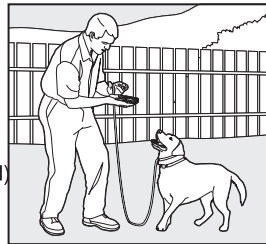
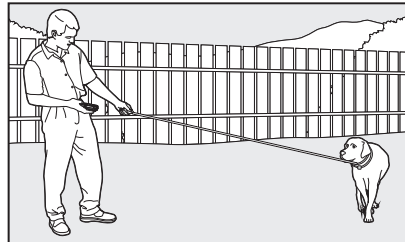
Pets typically jump up to get attention. If you do not want your pet to jump on you, then friends or members of the family should not encourage this behavior. That means every time your pet jumps on someone, he should be reprimanded or redirected to an alternate and acceptable behavior, for which he can receive praise.

Note: It is best if your pet first understands the “Sit” command.

1. Choose your pet’s Recognition Level.
2. As soon as your pet lifts his paws off the ground to jump on you, press the Stimulation/Vibration Button and give the command “Sit.”
3. Release the Stimulation/Vibration Button immediately once your pet is sitting, and verbally praise him.
4. If your pet ignores the stimulation/vibration, increase the Intensity Level by 1.
5. Practice this exercise in several different areas and use different people for distractions.



3. Wait for your pet to walk away from you. Using the Recognition Level for your pet, press and hold the Stimulation/Vibration Button on your Remote Transmitter.
4. Immediately give the command "Come" while continuing to hold the Stimulation/Vibration Button.
5. Using the leash, gently guide your pet toward you until he begins to come in your direction.
6. Immediately release the Button as soon as your pet steps towards you, and praise him enthusiastically.
7. Quickly move backwards as your pet begins to come back to you, praising him the entire time.
8. Praise your pet when he returns to you.
9. Repeat Steps 3 through 8.
10. Once your pet responds readily to the "Come" command several times, back away from him without giving a command. When your pet turns toward you, give the command "Come" (WITHOUT STIMULATION/VIBRATION) and praise him while you continue to back up. Praise your pet when he returns to you.
11. Use your leash to prevent your pet from running past you. If your pet manages to run past you, repeat Steps 3 through 8.



The "Stay" Command

1. Put a separate, non-metallic collar on your pet's neck ABOVE the Receiver Collar, and attach a leash. Note: Be sure the extra collar does not put pressure on the Contact Points.
2. Put your pet on his bed. Hold your leash in one hand and the Remote Transmitter in the other.
3. Staying within one meter, walk the perimeter of the bed. Do not say anything to your pet.
4. If your pet tries to leave the bed, press and hold the Stimulation/Vibration Button and give the "Stay" command. Continue to hold the button until your pet is back on his bed. If necessary, use the leash to guide your pet onto his place.
5. Praise your pet when he is back on his bed.
6. Once your pet has settled for a few seconds, release him and play calmly.
7. Repeat steps 1 through 5.

Receiver Collar: Delivers stimulation, vibration or tone on a signal from the Remote Transmitter. It is waterproof.

On/Off Button: Momentarily pressing and holding this button turns the Receiver Collar on and off.

Contact Points: Deliver stimulation/vibration to your pet from the Remote Transmitter.

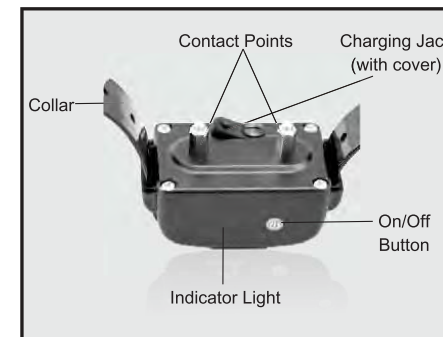
Receiver Indicator Light: Indicates when the Receiver Collar has been turned on or off or a button is pressed.

Red LED: Indicates low battery or in charging condition and when static stimulation or vibration button is pressed.

Green LED: Indicates good battery and when tone button is pressed. Also indicates when pairing mode or charging is completed.

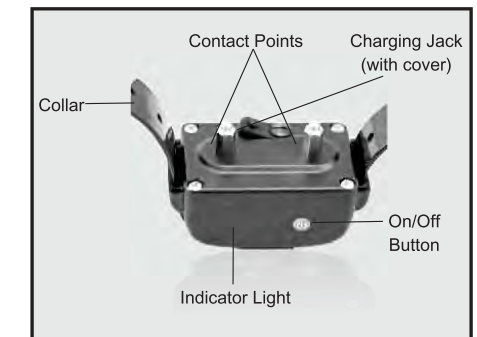
Dog 1 Receiver Collar

PTS-018



Dog 2 Receiver Collar

PTS-018



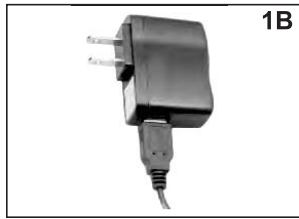
Charging Jack: For connecting the charger. Although the Receiver Collar is waterproof without the charger cover, keep the cover in place when not charging to keep debris out of the openings.

Operating Guide

Step 1 Prepare the Remote Transmitter

Charge the Remote Transmitter

1. Connect one of the charger connectors to the Remote Transmitter Charging Jack (1A).
2. Connect the USB port to the Charging Adapter (1B).
3. Plug the charger into a standard wall outlet (1C).
4. Charge the Remote Transmitter for 4 hours for the first charge. Recharges take only 2-3 hours. Note: The Battery Indicator will scroll and the LED Indicator light in solid red while charging; and the Battery Indicator will become solid, LED Indicator Light flashes when fully charged.
5. When charging is completed, remove the charger connector.



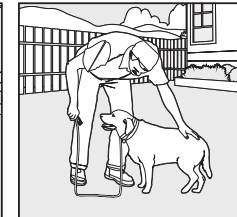
Turn ON the Transmitter

Power up the Transmitter by pressing any button. You will see the display turn on when you press any button.

Teaching Basic Obedience

The "Sit" Command

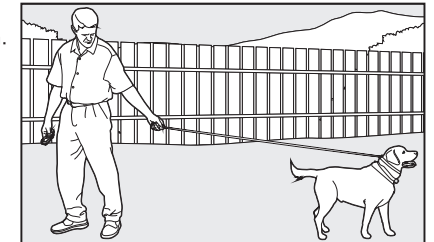
1. Put a separate, non-metallic collar on your pet's neck ABOVE the Receiver Collar, and attach a leash. Note: Be sure the extra collar does not put pressure on the Contact Points.
2. Hold the leash and the Remote Transmitter in one hand. Keep your other hand free to guide your pet into a "Sit" position.
3. Press and hold the Stimulation/Vibration Button, starting at your pet's Recognition Level.
4. Immediately give the "Sit" command while continuing to hold the Stimulation Button.
5. Release the Stimulation/Vibration Button as soon as your pet is in position, and praise him.
6. Release your pet from the "Sit" command and play.
7. Repeat Steps 2 through 6.



Note: If your pet breaks the "Sit" command, repeat steps 3 through 6. Keep your pet close to you while teaching the "Sit" command.

The "Come" Command

1. Put a separate, non-metallic collar on your pet's neck ABOVE the Receiver Collar, and attach a 3-meter leash. Note: Be sure the extra collar does not put pressure on the Contact Points.
2. Hold your leash in one hand and the Remote Transmitter in the other.



Find the Best Stimulation/Vibration Level for Your Pet

Important: Always start at the lowest level and work your way up.

The Remote Training Collar has 16 Stimulation/Vibration Levels. This allows you to choose the Stimulation/Vibration that is best for your pet.

Once you have placed the Receiver Collar on your pet, it is time to find the Stimulation/Vibration Level that is best for him. This is called the Recognition Level.

A slight change in your pet's behavior, such as looking around in curiosity, scratching at his collar, or flicking his ears, indicates the Recognition Level that is best for him.









Follow the steps below to find your pet's Recognition Level:

- Starting at Level 1 on the Digital Display, press the Stimulation Button (red) or Vibration Button (blue) continuously for 1 to 2 seconds, Note: When the Stimulation/Vibration Button is held down for 10 consecutive seconds, the Transmitter will "time-out", and you must release and press the button again before additional stimulation/vibration can be delivered.
- If your pet shows no reaction, repeat the Stimulation/Vibration Level several times before moving up to the next level.
- YOUR PET SHOULD NOT VOCALIZE OR PANIC WHEN RECEIVING STIMULATION/VIBRATION. IF THIS HAPPENS, THE STIMULATION/VIBRATION LEVEL IS TOO HIGH AND YOU NEED TO GO BACK TO THE PREVIOUS LEVEL AND REPEAT THE PROCESS.**
- Move up through the Stimulation/Vibration Levels until your pet reliably responds to the stimulation/vibration.
- If your pet continues to show no response at Level 16, check the fit of the Receiver Collar. If this still does not yield any results, your pet's hair will need to be trimmed around the Contact Points.

If, after completing all of these steps, your dog still does not indicate he is feeling the stimulation/vibration, please contact us for Customer Service.

Transmitter Digital Display

The display stays on for approximately 30 seconds after a button press. After 30 seconds with no button press, the blue backlight shuts off first, and if no button press with another five minutes, the display shuts off and the Transmitter goes into battery conservation mode. Pressing any button will turn the display back on. The symbols on the display are explained below.

	Indicates stimulation/vibration levels ranging from 1-16, and appears in the lower middle part.		Stimulation mode symbol indicate Stimulation button press on transmitter.
	Indicates the active dog receiver and appears in the upper left and right corners next to the battery indicator.		Vibration mode symbol indicate Vibration button press on transmitter.
	Indicates battery's power level. Note: The battery indicator will flash every second to indicate low battery.		Tone mode symbol indicate Tone button press on transmitter.
	Indicates Transmitter is ready to pair with Receiver Collar. Press button for 3 seconds to display and begin pairing.		Indicates sending signal to Receiver Collar when - and + buttons are held simultaneously.

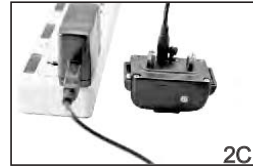
Transmitter LED Indicator Light – Function and Response

Button	Button Function	Transmitter Indicator Light Response
Tone (yellow)	Delivers audible tone to collar	Red LED on for length of button press
Stimulation (red)	Delivers stimulation to collar based on current level shown on Digital Display (stimulation will time-out for 5 seconds if pressed continuously for 10 seconds and will reset after timeout period)	Red LED on for length of button press
Vibration (blue)	Delivers vibration to collar based on current level shown on Digital Display (vibration will also time-out after button is held for 10 continuous seconds)	Red LED on for length of button press
+ and - Buttons held simultaneously	Transmits Pairing command to Receiver Collar when P is visible on Digital Display	Red LED on for length of button press

Step 2 Prepare the Receiver Collar

Charge the Receiver Collar

1. Lift the rubber cover protecting the Receiver Collar Charging Jack.
2. Connect one of the charger connectors to the Receiver Collar Charging Jack (**2A**).
3. Connect the USB port to the Charging Adapter (**2B**).
4. Plug the charger into a standard wall outlet (**2C**).
5. Charge the Receiver Collar for 4 hours for the first charge. Recharges take only 2-3 hours.
Note: The Indicator light will be in solid red while charging and green light turned on when fully charged.
6. When charging is completed, remove the charger connector.



To turn Receiver Collar On

1. Press and hold the On/Off Button until the Green LED light comes on.
(This takes approximately one second.)
2. Release the On/Off Button.
In normal mode, the Green LED will flash once every 5 seconds, indicating the Receiver Collar is on and ready to receive a signal from the Handheld Transmitter.

To turn Receiver Collar Off

1. Press and hold the On/Off Button until the Red LED light shuts off.
(This takes approximately three seconds.)
2. Release the On/Off Button. Note: To extend the life of the batteries, turn the Receiver Collar off when it is not in use.

Training Guide

General Tips

- Eliminate one misbehavior or teach one obedience command at a time. If you move too fast with training, your pet may become confused.
- Be consistent. Correct your pet every time he misbehaves.
- Unless you can supervise him, it is recommended that you restrict your pet from situations in which he has a history of misbehaving. However, setting up a situation as a training session can dramatically improve your chances of success.
- If your pet reacts to the tones by hiding or acting fearful, redirect his attention to a simple and appropriate behavior, such as the "sit" command.
- Pets should be at least 6 months old before using the Training Collar.
- Only let responsible family members use the Training Collar. It is not a toy!
- Other pets in hearing range will be affected by the training tones. Therefore, training sessions should be conducted out of hearing range of other pets.

⚠ WARNING Never use the Rechargeable Remote Training Collar to correct or eliminate any form of aggressive behavior. We recommend you contact your local veterinarian or professional trainer to determine if your pet might be aggressive. See page 2 for more information.

Teaching Your Pet the Positive Tone

Before using the Training Collar to correct your pet, spend 10 to 15 minutes per day for 2 or 3 days helping him create the association of the tone with reward and praise. To accomplish this:

1. Push the Tone Button (yellow) for 2 consecutive seconds.
 2. Release the button and immediately reward your pet with verbal praise, petting, or a small food reward.
Spend 3 to 5 seconds on your rewarding.
 3. Wait a few minutes and repeat holding the Tone Button for 2 seconds following with praise.
- Vary the reward to prevent your pet from anticipating a specific type. This stage of training is complete when your pet obviously anticipates a reward when he hears the positive tone.

Step 4 To Pair the Remote Transmitter and Receiver Collar

If your Receiver Collar does not beep when the Tone Button of the Remote Transmitter is pressed, or if you feel the Receiver Collar is not responding to the Remote Transmitter, follow these steps to pair:

1. Place the transmitter into pairing mode by pressing the 1/2 Button for 3-5 seconds until the Digital Display shows P.
2. With the Receiver Collar off your pet, turn the Receiver Collar Off. Restart, press and hold the On/Off Button until the Green LED turns off. Release the On/Off Button and the Green LED will flash every second on the Receiver Collar. This continues for 16 seconds, within which pairing should be completed.
3. Press and hold the up (+) and down (-) Buttons simultaneously until the Green LED flashes rapidly for 5 times on the Receiver Collar, indicating it has learned the Transmitter ID.
4. Press and hold the 1/2 Button again to complete and exit Pairing.
5. Press any of the Stimulation/Vibration/Tone Buttons on the transmitter. The Receiver Collar should respond accordingly, verifying that it is paired with the transmitter.



Receiver Indicator Light – Function and Response

Receiver Collar Function	Green LED Response
Power on	Flashes once
Normal operation - Good battery	1 flash every 5 seconds
Training tone	On length of button press
In pairing position	Flashes once every second within 16 seconds
Pairing Complete	Flashes rapidly for five times
Charging Complete	On length of charging

Receiver Collar Function	Red LED Response
Power off	On for 3 seconds
Normal operation - Low battery	Flashes rapidly
Static stimulation/Vibration	On length of button press
Charging	On length of charging within 2-3 hours

Two Dog System

Note: If you wish to add another receiver collar to the training system, extra Receiver Collars are available where you bought your Remote Training Collar.

To Add Dog 2 (PTS-018B)

Remote Transmitter

1. Press 1/2 Button and change to the other Channel for Dog 2.
2. Turn on the Receiver Collar for Dog 2, press any Mode Buttons to verify function.
3. If Dog 2 Receiver Collar does not respond. Pairing may be needed. Repeat Steps in To Pair the Remote Transmitter and Receiver Collar above.

Rechargeable Batteries

- The rechargeable Lithium Ion batteries are not memory sensitive and do not require depletion before charging.
- The batteries come partially charged from the factory, but will require a full charge (3-4 hours) before the first use.
- Remember—always keep batteries away from flame.
- When storing the unit for long periods, remember to regularly give batteries a full charge (2-3 hours). This should be done once every 4 to 6 weeks.
- The Training Collars are equipped with a safety feature to prevent over charging.
- If your equipment has not been charged for an extended period, you may experience a decrease in battery life the first few uses. Afterwards, the battery life will return to previous capacity levels.
- You should expect hundreds of recharge cycles from your batteries. However, all rechargeable batteries lose capacity over time relative to the number of recharge cycles they experience. This is normal. If your operating time drops to half of the original life, contact the Customer Care Center.

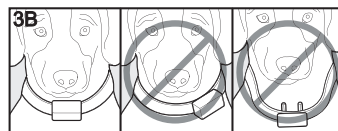
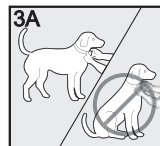
Step 3

Fit the Receiver Collar

Important: The proper fit and placement of your Receiver Collar is important for effective training. The Contact Points must have direct contact with your pet's skin on the underside of his neck.

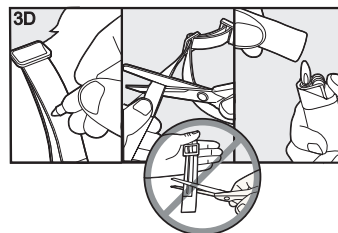
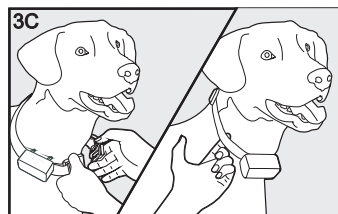
To assure a proper fit, please follow these steps:

1. Make sure that the Receiver Collar is turned off.
2. Have your pet standing comfortably (3A).
3. Place the Receiver Collar on your dog's neck close to the ears. Center the Contact Points underneath your dog's neck, touching the skin. Note: It is sometimes necessary to trim the hair around the Contact Points to make sure that contact is consistent (3B).



CAUTION Do not shave the pet's neck as this may increase the risk of skin irritation.

4. The Receiver Collar should fit snugly, yet loose enough to allow one finger to fit between the strap and your pet's neck (3C).
5. Allow your pet to wear the collar for several minutes then recheck the fit. Check the fit again as your pet becomes more comfortable with the Receiver Collar.
6. Trim the collar as follows (3D):
 - a. Mark the desired length of the collar with a pen. Allow for growth if your pet is young or grows a thick winter coat.
 - b. Remove the Receiver Collar from your pet and cut off the excess.
 - c. Before placing the Receiver Collar back onto your pet, seal the edge of the cut collar by applying a flame along the frayed edge.

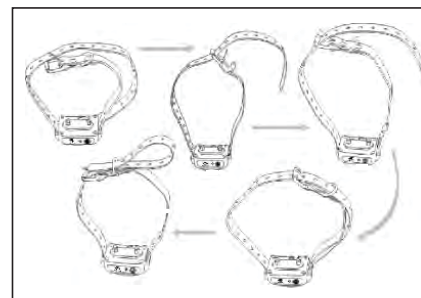


CAUTION Risk of skin damage. For comfort, safety and effectiveness of this product, please ensure that you check the fit of your pet's collar frequently. If any skin irritation is observed, discontinue the use of the collar for a few days. If the condition persists beyond 48 hours, see your veterinarian.

Do not attach a leash to the Remote Training Collar. This can result in pulling the Contact Points too tightly against your pet's neck. You may put a separate non-metallic collar on your dog's neck and attach a leash. Do use a harness for attaching a leash and/or tags while using the Remote Training Collar.

Please refer to page 2 for additional information.

To Re-Thread the Collar



The slide buckle prevents the collar from becoming loose around your pet's neck.

The ridges must be facing up; the collar will slip if it is not properly threaded.