

Ins-30208-US Net2 Entry - Vandal Resistant Panel

Technical Support



1.800.672.7298



supportUS@paxton-access.com

Technical help is available: Monday - Friday from 02:00 AM - 8:00 PM (EST)

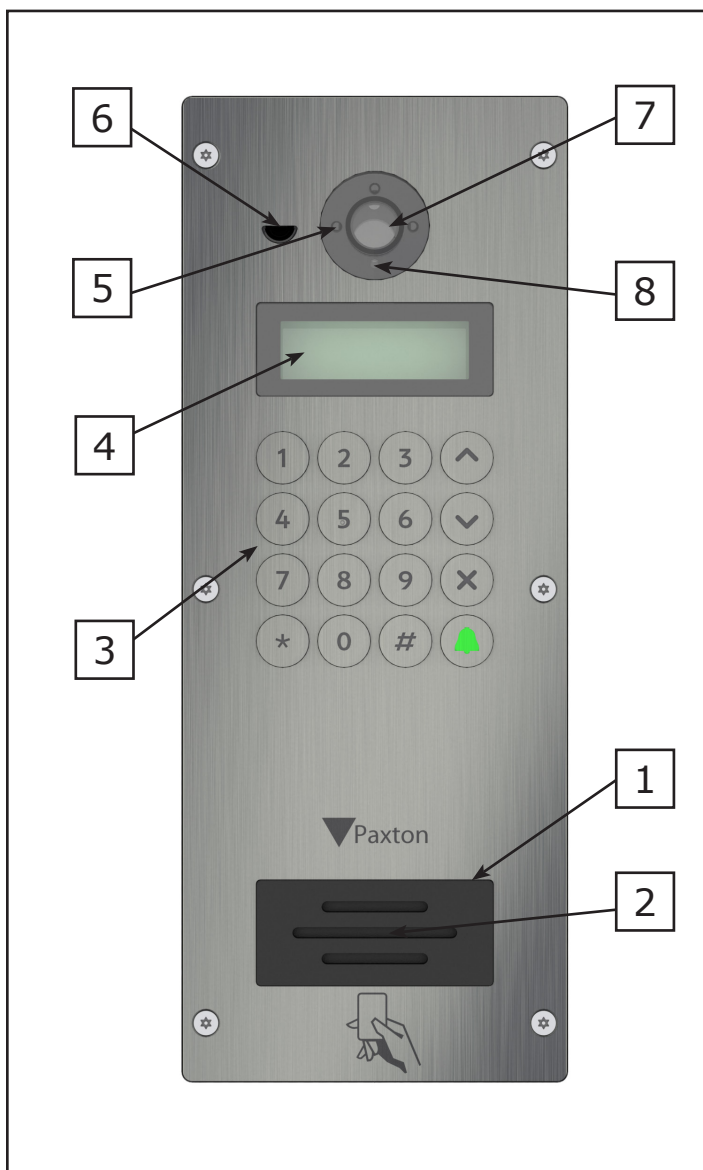
Documentation on all Paxton products can be found on our web site - <http://www.paxton-access.com/>

Description of product

The Net2 Entry panel is a robust door entry panel incorporating both door entry and access control functions. It is powered using power over Ethernet (PoE) and communicates with the other elements of the system using IPv6, providing 'plug and play' installation. Each panel is associated with a Net2 Entry control unit which is the interface to the door hardware.

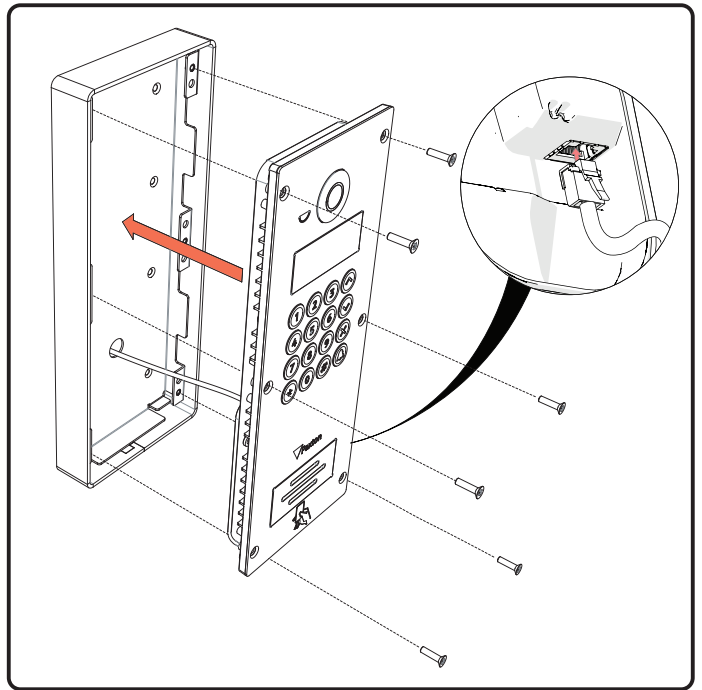
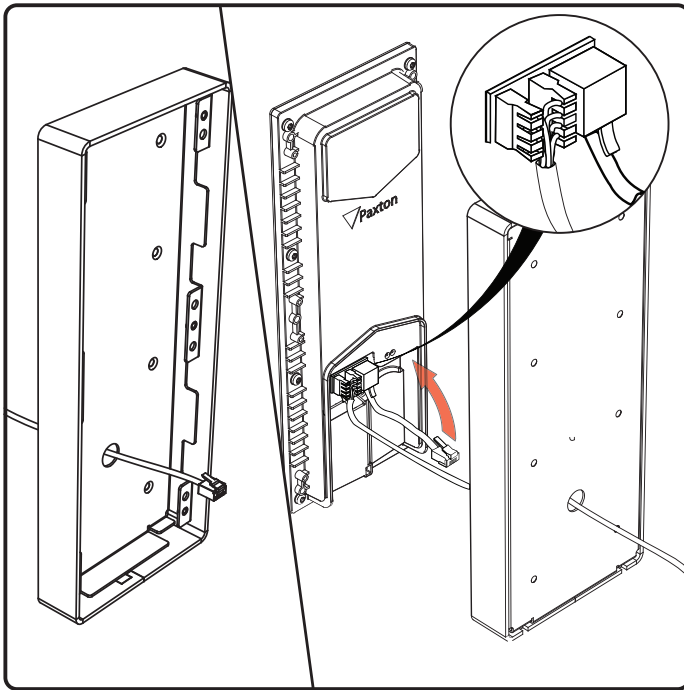
The panel is equipped with a keypad and a proximity token reader. A resident can use either the keypad or a token to gain entry. Installers gain access to the menu options using an engineer code or an engineer token.

Net2 software is used to administer the access control functions. It must be v4.25 or a later version.

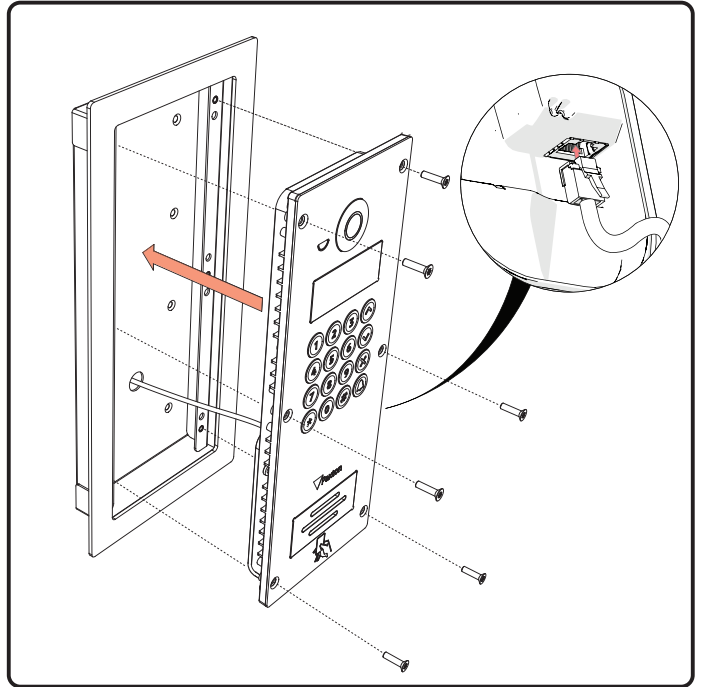
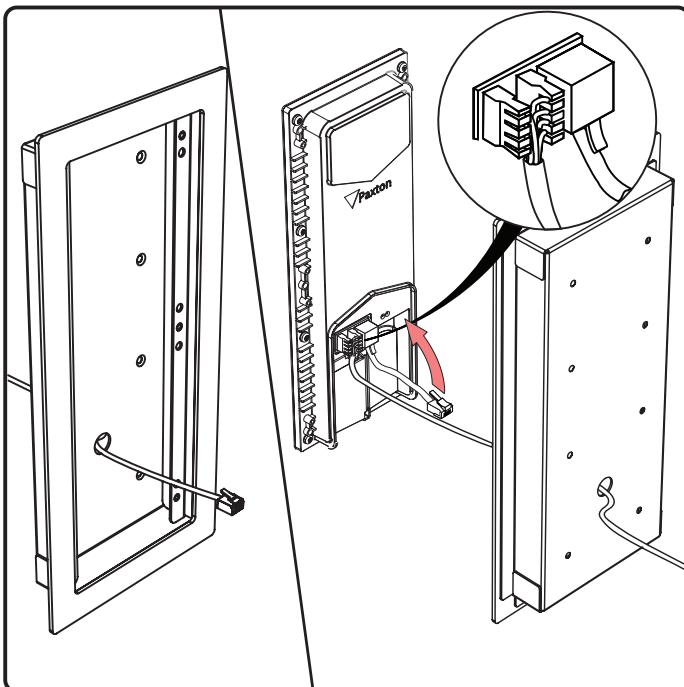


1. Speaker
2. Proximity reader
3. Keypad
4. LCD display
5. IR LEDS for night time operation
6. Microphone
7. Color camera
8. Light sensor

SURFACE MOUNT



FLUSH MOUNT



Use the up and down arrows on the panel to view all the menu options.

Use the  key to Cancel

Initializing a new system

The first time the system is powered up the panel will request that the Language to be used is confirmed.

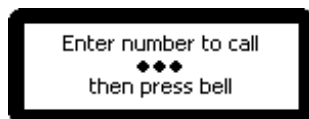
It then asks for an Engineer code to be set up. Enter the required code and press the bell key. Confirm the code and press bell to complete the process.



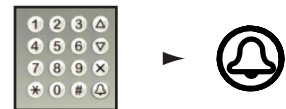
The Net2 Entry system uses a separate control unit to operate the door. To associate a panel with its control unit, the Serial Number of the control unit must be entered.

Only one panel can be associated with a control unit. Multiple panel installations require a control unit for each panel.

Calling a Monitor unit



As Monitor units are added to the system, they will automatically become active. To call a monitor type in the monitor ID and press the Bell button.



Single Occupancy

When only one monitor ID is in use, pressing the Bell button will call the monitor.



How an Occupant gains entry

For access control, a Net2 system is required for administration. Once set up, a user can gain entry by presenting their token to the panel. For PIN or Code entry, the # key must be pressed first before pressing the numbers on the panel.



Using the Engineer menu

To access the Engineer menu from the default screen press *, enter the Engineer code and press the Bell button.

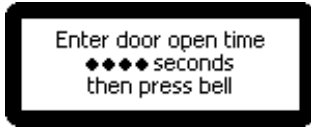


Use the up and down arrows on the panel to view all the menu options.

Use the  key to Cancel

1. Door open time

from the Engineer menu - Press key 1.



This is the time period that the lock will stay released once the open door button has been pressed on a monitor. This value may only be changed when not administered by Net2.

2. Volume settings

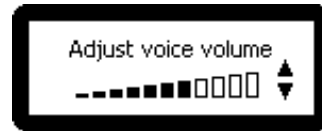
from the Engineer menu - Press key 2

1. Set voice volume

from Volume settings menu - Press key 1

This sets the volume of the entry panel speaker.

Use the up and down arrow buttons to adjust then press Bell.



2. Set keypress tone

from Volume settings menu - Press key 2

This sets the tone that the entry panel will make when a key is pressed.

Press 1. Click
Press 2. Beep
Press 3. Silent

3. Set door open tone

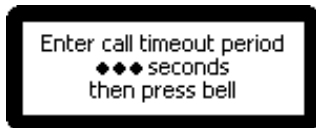
from Volume settings menu - Press key 3

This sets the tone that the entry panel will make while the lock is released.

Press 1. Beep
Press 2. Buzz
Press 3. Silent

3. Call timeout

from the Engineer menu - Press key 3



This is the maximum time period that one call can last. This ensures that the entry panel is not held busy if a call is not terminated correctly.

4. View options

from the Engineer menu - Press key 4

1. Allow video without being called

from View options menu - Press key 1

This allows the camera to be viewed at any time even when not being used to grant access.

Press 1. Yes
Press 2. No

2. Allow audio without being called

from View options menu - Press key 2

This allows the microphone to be turned on at any time even when not being used to grant access.

Press 1. Yes
Press 2. No

3. Open the Door without being called

from View options menu - Press key 3

This allows the 'Unlock door' button to be used while viewing with the camera. The visitor does not need to initiate the call.

Press 1. Yes
Press 2. No

5. Panel settings

from the Engineer menu - Press key 5

1. Set control unit from Panel settings menu - Press key 1

This sets the control unit that the Net2 Entry panel is associated with. Enter the Serial Number of the control unit and then press Bell.

2. Factory reset from Panel settings menu - Press key 2

This returns the Entry panel to Factory settings

Press 1. Yes
Press 2. No

3. Backlight from Panel settings menu - Press key 3

This sets when the Entry panel backlight will be on.

Press 1. Always on
Press 2. Never on
Press 3. Only on in low light

4. Video quality from Panel settings menu - Press key 4

This option slows the video rate to reduce the load on busy networks.

Press 1. Low - busy networks
Press 2. Med - small networks
Press 3. High - private wiring

6. Operating Mode

from the Engineer menu - Press key 6

1. Number only from Set Operating mode menu - Press key 1

This requires the visitor to enter the number without the assistance of a list.



2. Numbered list from Set Operating mode menu - Press key 2

This displays the monitor IDs to the visitor as a numeric list with its name which they can scroll or enter the number.



Menu will also respond to numeric input.

3. Text selection from Set Operating mode menu - Press key 3

This displays the monitor names to the visitor in alphabetical order which they can scroll through and select.



7. Engineer Access from the Engineer menu - Press key 7

1. Set Engineer Code from Engineer Access menu - Press key 1

This allows the Engineer to change the Engineer code

2. Change Engineer Token from Engineer Access menu - Press key 2

This allows the engineer to add / change the Engineer token

The engineer can create a token that can be presented to the proximity reader instead of using the engineer code to gain access to the Engineer Menu.

8. Language from the Engineer menu - Press key 8

This displays the language options available for this monitor.

9. About from the Engineer menu - Press key 9

This displays information about the panel. (e.g. the current version number)

Specifications			
Dimensions	Width	Height	Depth
	4 inch	11 inch	1 1/4 inch
Electrical	Min	Max	
Power over Ethernet (POE) power rating		12.95W	IEEE 802.3af class 0
Communication			
Ethernet bandwidth requirement	100kb/s multicast	1Mb/s multicast	per panel during call
Panels per system		100	
Features	Min	Max	
Camera system			Full color
I/R illumination			Yes
Audio system			Two way
Display			Backlit LCD
Proximity reader		125k/Hz	Paxton Access tokens
Environment	Min	Max	
Operating temperature	- 20 °C (- 4 °F)	50 °C (122 °F)	
IP Rating	IP55		External use
Vandal resistance			High

Product compliance and limitations

Wiring methods shall be in accordance with the National Electrical Code (ANSI/NFPA70), local codes, and the authorities having jurisdiction.

This device complies with Industry Canada licence-exempt RSS standard(s). Operation is subject to the following two conditions: (1) this device may not cause interference, and (2) this device must accept any interference, including interference that may cause undesired operation of the device.

This device complies with Part 15 of the FCC Rules. Operation is subject to the following two conditions:
 (1) this device may not cause harmful interference, and (2) this device must accept any interference received, including interference that may cause undesired operation. Changes or modifications not expressly approved by the party responsible for compliance could void the user's authority to operate the equipment.