


## Technical Support

 1 800 672 PAXT



[support@paxton-access.co.uk](mailto:support@paxton-access.co.uk)

Technical help is available: **Monday - Friday from 5am - 5pm PST / 8am - 8pm EST**

Other documentation on Net2 can be found on our web site - <http://www.paxton-access.com/>

## Suitability

Security sensitive doors



Wet environments



Mounted on metal surface



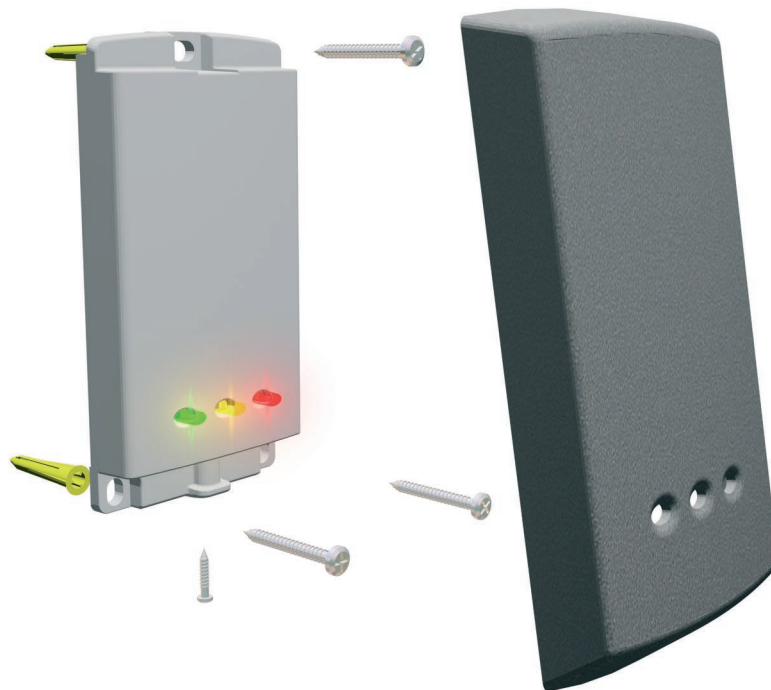
Readers mounted together

**300mm**  
between readers

## Quickstart guide

This supplement is a brief guide to installing a P series compact system. Advanced features such as card zoning are not covered in this guide. For further information, a full installation manual is available on the website.

## Fitting

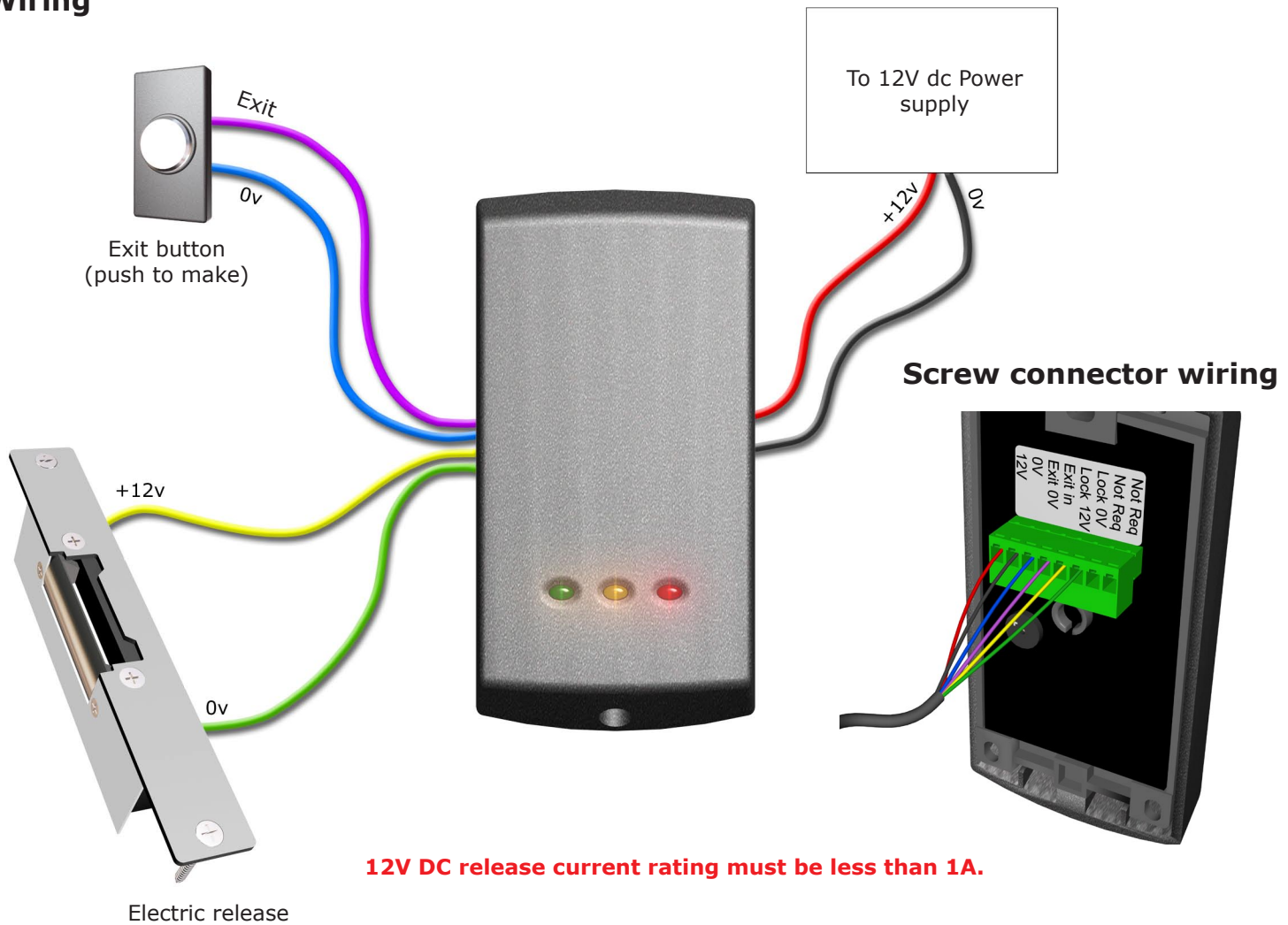


## Reader covers

Additional covers are available in black, white, grey, blue and silver. Registered installers can order these free of charge by logging onto the secure installer extranet: <https://extranet.paxton-access.co.uk/index.asp>

If you are not a registered installer please call us on **+44 (0)845 838 1716** for more information.

## Wiring



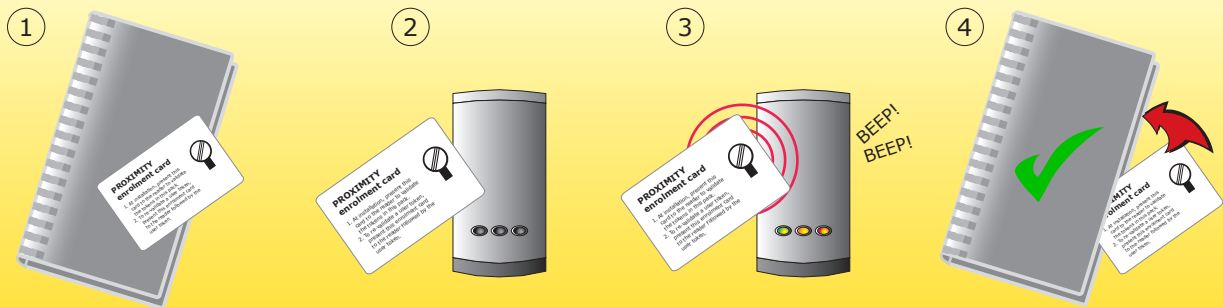
## Wire outputs



### Reset - Use 1 method, not both

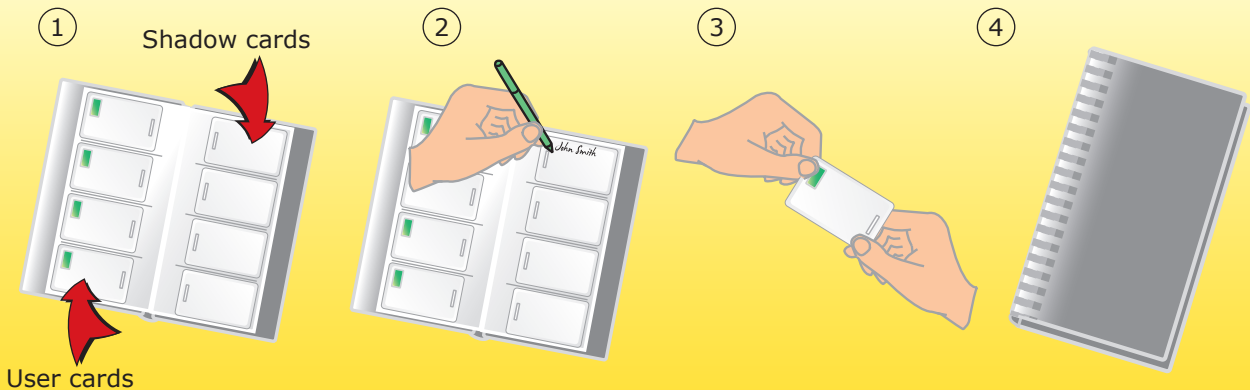
1. Power down the unit
  2. Press and hold the exit button
  3. Power up the unit - wait for beep/red LED to go out
  4. Release and press the exit button a further 2 times (within 3 seconds)
  5. The reader will beep 6 times
- OR
1. Present Enrolment card
  2. Present Door open time card twice
  3. Present Enrolment card
  4. Present Door open time card twice
  5. WAIT FOR 5 SECONDS!

## Enrolment Card - must be presented when the system is first powered on



1. Take the enrolment card from the new pack of user cards
2. Present/swipe the enrolment card to the reader
3. The reader beeps and the LED's become lit as the enrolment card is acknowledged
4. All cards in the pack are now valid. The enrolment card can now be returned to it's pack. To add extra packs see card pack instructions

## Issuing tokens



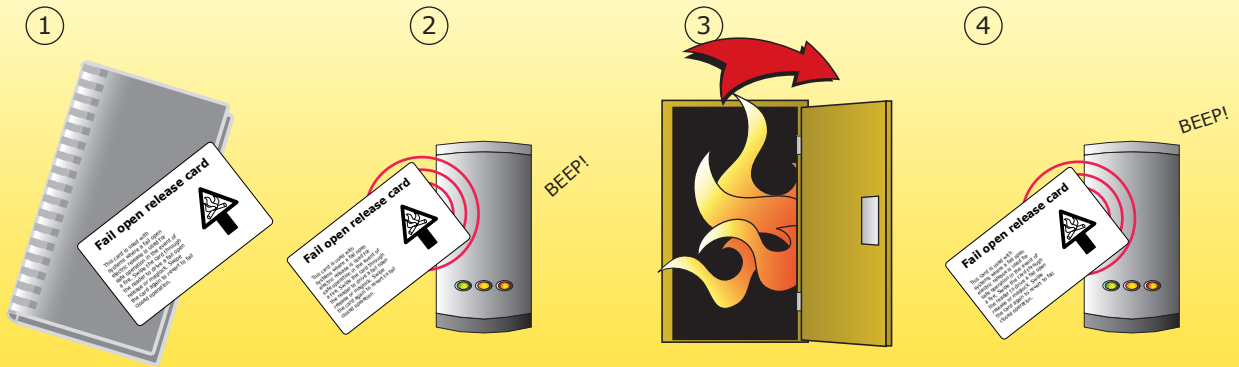
1. On each page there are 4 'pairs' of cards - a 'User card' and a corresponding 'Shadow card'
2. Write the name of the user on the shadow card
3. Take the user card from the opposite pouch and issue to the user
4. Keep the card pack containing the shadow cards in a safe place

## Bar a user



1. When a card is lost or stolen it is important to bar the card from your system to avoid unauthorized access
2. To bar a card or token take it's corresponding shadow card from the card pack
3. Swipe the shadow card through the reader. This will remove the lost card or token from your system
4. A barred card can re-validated by swiping the enrolment card followed by the user card through the reader

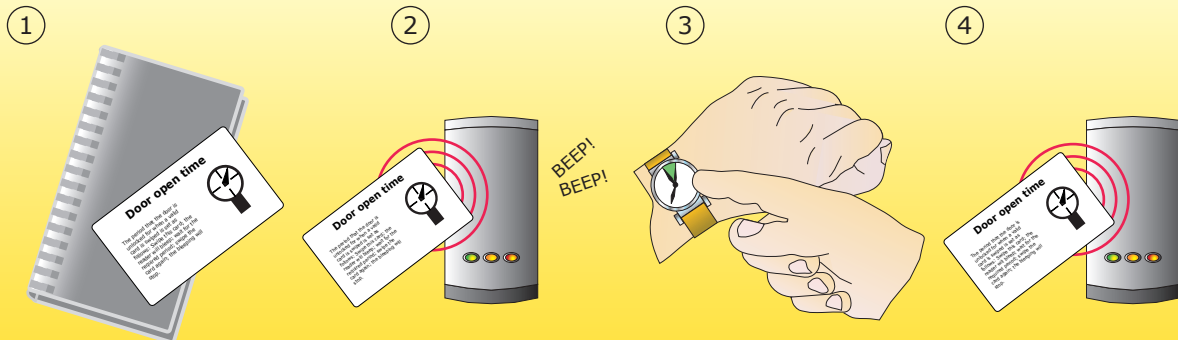
## Fail open release card - Compact systems are fail closed as default



NOTE: THIS CARD CAN ONLY BE USED WITH A FAIL OPEN LOCK

1. Take the fail open release function card from the starter pack
2. Swipe the card through the reader. The reader will beep for about a second
3. The reader is now set to fail open mode. This allows safe operation of the door in case of fire: The lock will release when the power is cut
4. To revert to fail closed mode, swipe the card again and the reader will beep once more.

## Door open time (seconds)



1. Take the door open time function card from the starter pack
2. Present/swipe the card to the reader. The reader will start beeping
3. Wait for the required period you wish the door to remain open
4. Present/swipe the card again at the end of the period to set the open time. The beeping will stop

## Silent operation



1. Take the silent operation function card from the starter pack
2. Present/swipe the card to the reader. The reader will beep
3. The reader is now in silent operation mode
4. Present/swipe the card again to disable silent operation mode. The reader will beep twice

<b>Specifications</b>			
	<b>Min</b>	<b>Max</b>	
<b>Features</b>			
Number of Users	1	10,000	
Number of Packs	1	100	
Door open time	1 sec	60 secs	
Time zones (with additional time clock)	1	2	
Access levels (Colour Zones)	1	3	
Silent operation			yes
Can be used with fail OPEN locks			yes
Can be used with fail CLOSED locks			yes
Exit button input			yes
<b>Electrical</b>			
Voltage	11v DC	14v DC	
Current		30mA	
Switchable current		1A	
<b>Environment</b>			
Operating temperature	-20 °C (-4 °F)	+55 °C (+131 °F)	
Waterproof	IPX7		Outdoor Use
<b>Dimensions</b>			
	<b>Width</b>	<b>Height</b>	<b>Depth</b>
P38	1 1/2 inch	3 inch	1/2 inch
P50	2 inch	4 inch	5/8 inch
P75	3 inch	5 1/2 inch	5/8 inch

### **FCC Compliance**

This device complies with Part 15 of the FCC Rules. Operation is subject to the following two conditions: (1) this device may not cause harmful interference, and (2) this device must accept any interference received, including interference that may cause undesired operation.

Changes or modifications not expressly approved by the party responsible for compliance could void the user's authority to operate the equipment.