



Technical Support

☎ +44(0)845 8381716



support@paxton-access.co.uk

Technical help is available Monday - Friday from **07:00 - 19:00**.

Other documentation on Net2 can be found on our web site - <http://www.paxton-access.co.uk/>

Suitability

Security sensitive doors



Wet environments



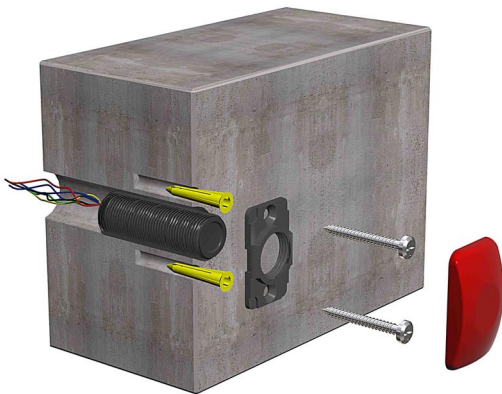
Mounted on metal surface



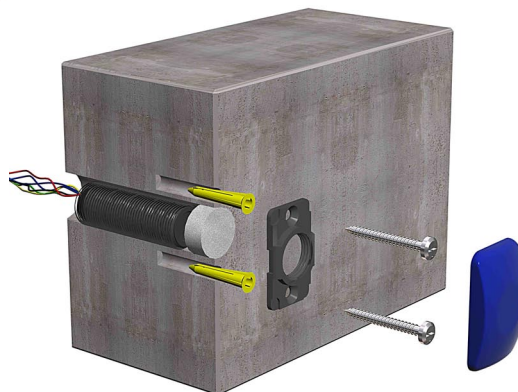
Readers mounted together

500mm
between readers

Fitting



Open hole - medium vandal resistance

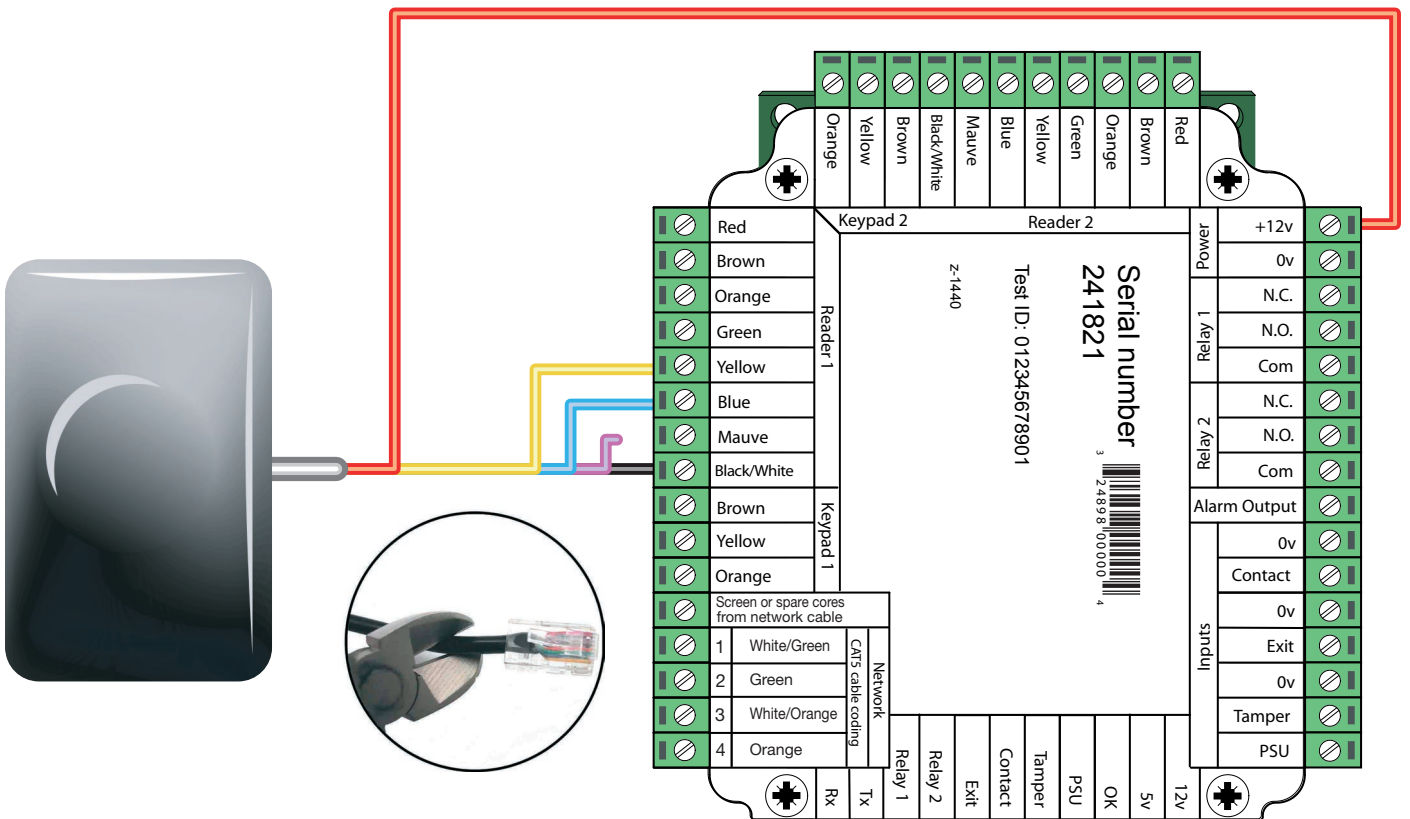
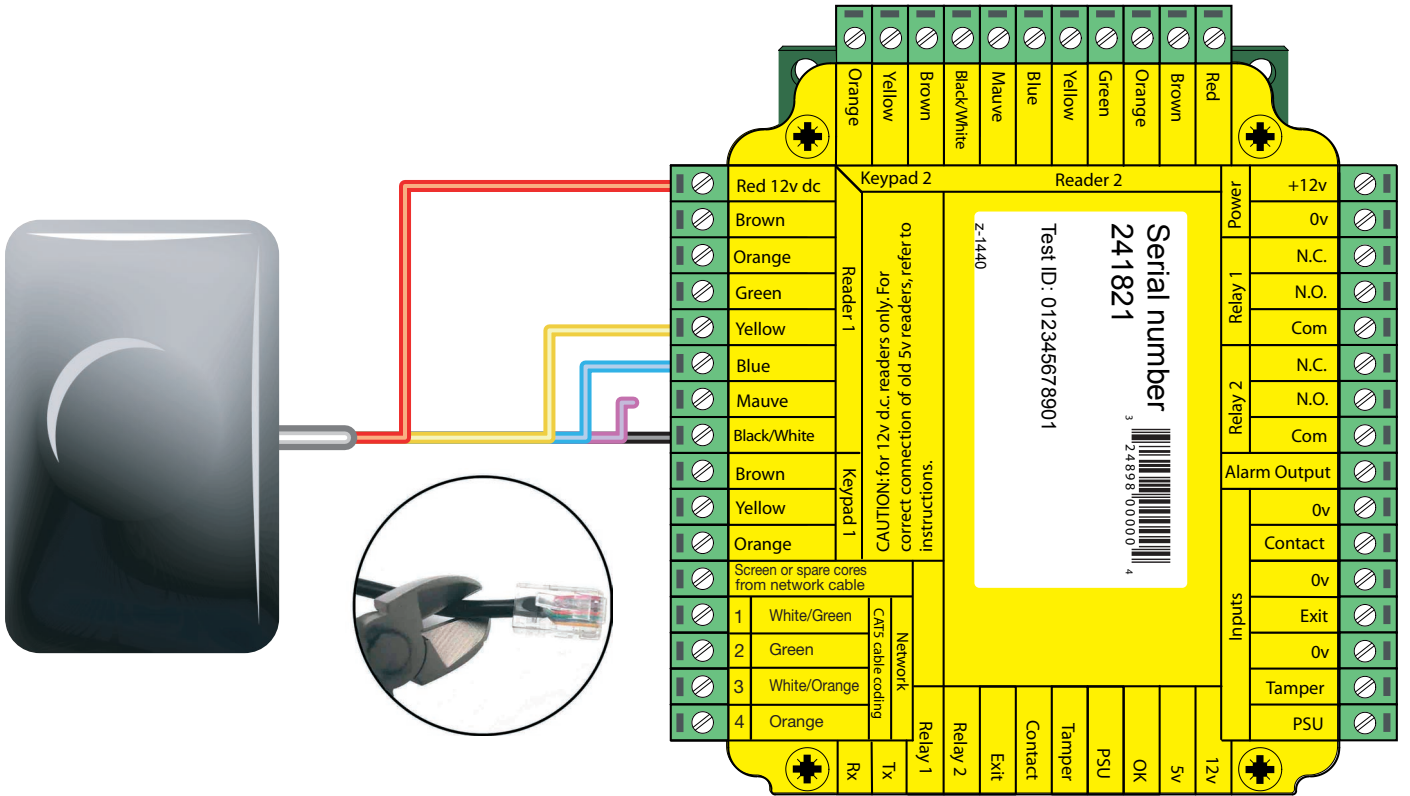


Cement plug - high
vandal resistance



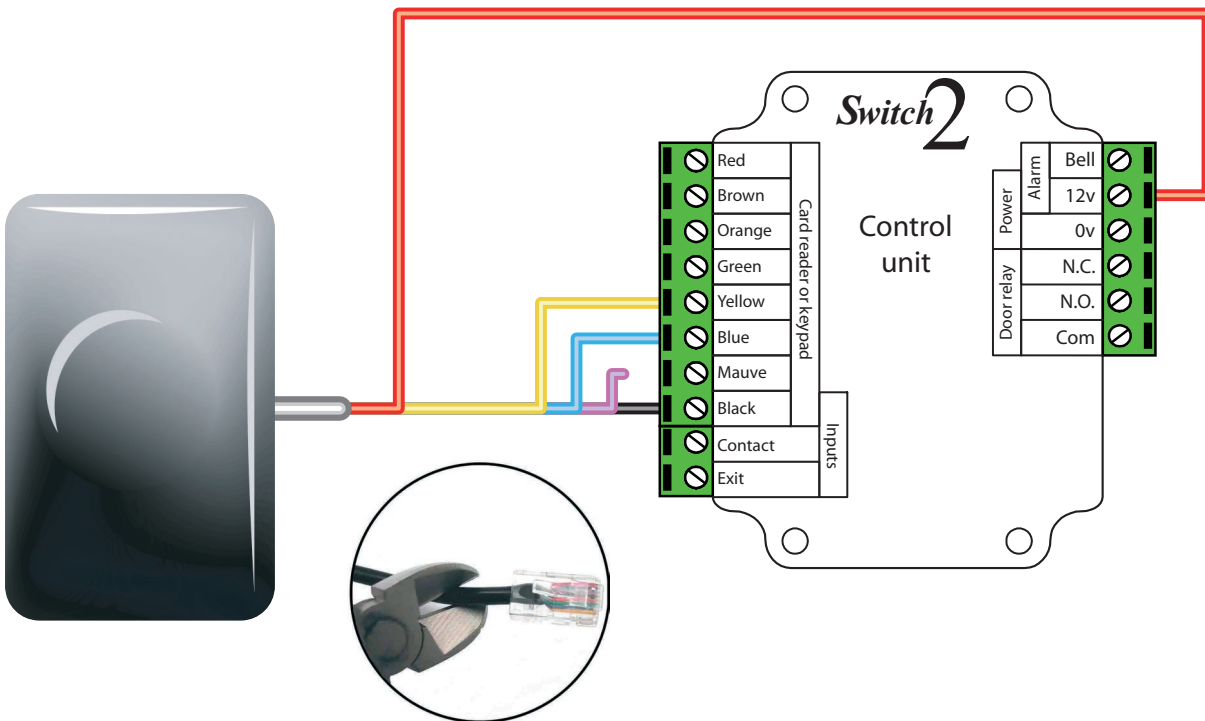
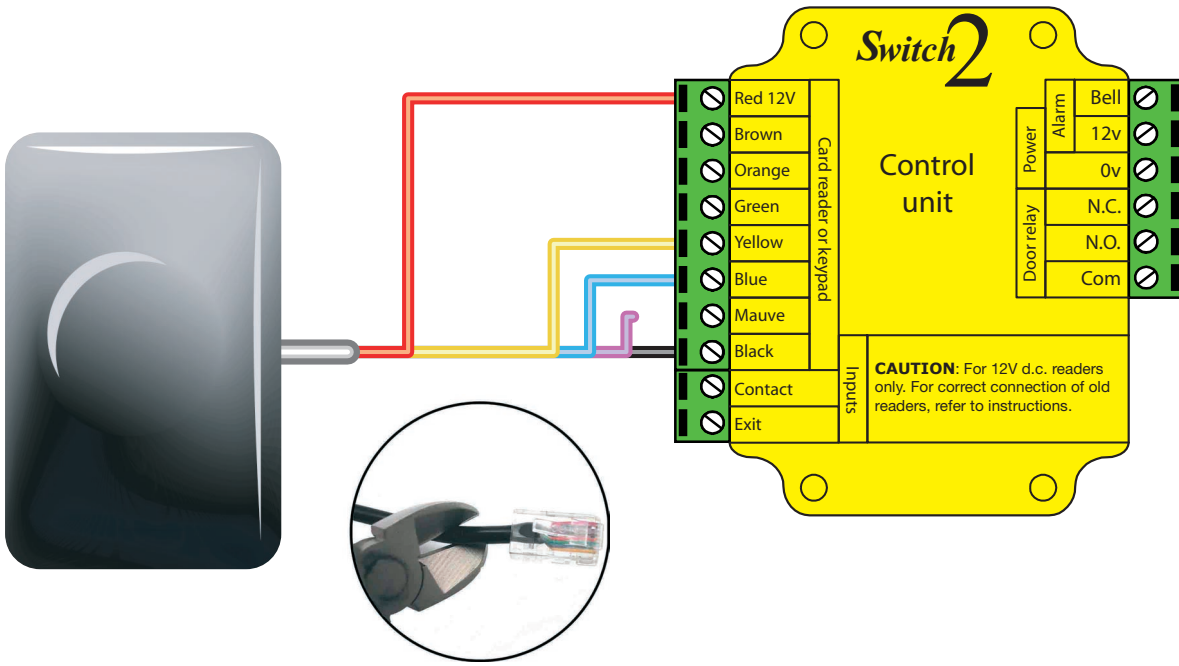
Blind hole - very high vandal resistance

Wiring



Cable extensions

Readers can be extended using Belden CR9540 10-core overall screened cable. The maximum cable length between reader and control unit is **100m**.



Specifications

Vandal proof reader - tube	19 dia	60 d		mm
Vandal proof reader - cover cap	48 h	30 w		mm
Panel mounting studs - position (in a square around the center of the reader)	49			mm
Electrical				
Operating voltage	9	12	14	V d.c.
Current consumption	50 min	120 max		mA
Carrier frequency		125		kHz
Clock & data bit period		600		us
Product specific information				
Water resistance		IPX7		
Vandal resistance		Very high		
Max read range: cards			100	mm
Max read range: keyfobs			55	mm
Security		High		
Width		30		mm
Height		48		mm
Depth		9		mm
Diameter		19		mm
Length		59		mm
Cable type - for extension		Belden 8 core CR9538		
Max cable extension from control unit		100		m
Cable length		5		m
Token reads		Not limited		

FCC Compliance

This device complies with Part 15 of the FCC Rules. Operation is subject to the following two conditions: (1) this device may not cause harmful interference, and (2) this device must accept any interference received, including interference that may cause undesired operation.

Changes or modifications not expressly approved by the party responsible for compliance could void the user's authority to operate the equipment.