


Technical Support

 1 800 672 PAXT

support@paxton-access.co.uk

Technical help is available: Monday - Friday from 5am - 5pm PST / 8am - 8pm EST

Other documentation on Net2 can be found on our web site - <http://www.paxton-access.com/>

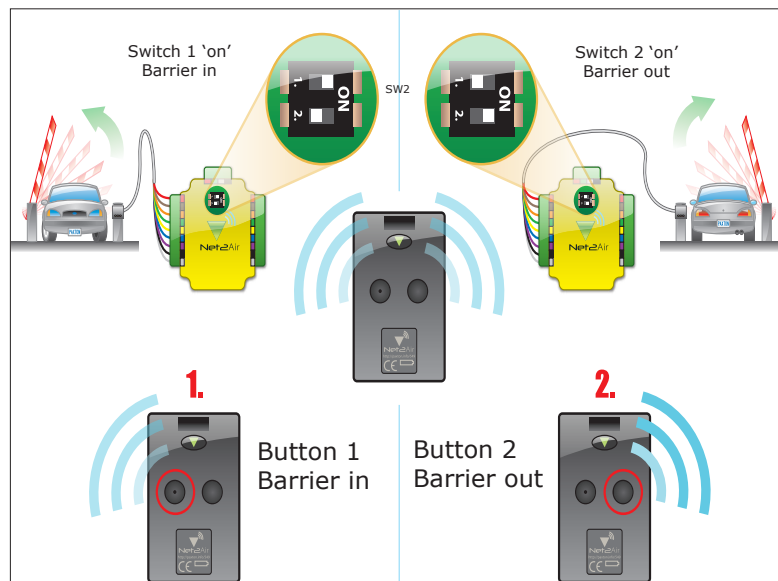
What is Net2Air?

The Net2Air system comprises of a Net2Air Hands Free Interface, a compatible reader (see specification table) and Net2Air keycards or keyfobs. The hands free system operates by using the field being transmitted by the reader to wake up the token. This then communicates with the interface which contains a long range receiver.

The Net2 keycard increases this effective read range to a maximum of 50 yards. This is achieved by activating the system manually instead of using the reader field (maximum 2.7 yards.)

Net2Air keycards also include a standard proximity ID chip and can therefore be presented to any Paxton proximity reader whether they are using the Net2Air interface or not.

The keycard has been designed with features to extend battery life, these include a two second timeout once access has been granted and a capability to prevent repeated access to the same door whilst the keyfob remains in the field of the reader. Leaving the keycard in the field of a reader will reduce battery life.



Interface Settings

To initialise the button functions of a Keycard the interface needs to be configured.

The Net2Air Interface has a pair of switches labelled SW2. When switch one is set to 'on' the interface will respond when button 1 is pressed. When switch two is set to 'on' the interface will respond when button 2 is pressed.

To configure keycard buttons the keycard must first be read by the reader without pressing buttons. The keycard automatically stores the details of the interface and will activate the door using the button specified by the SW2 setting.

Battery replacement

Remove the screw on the back of the card. Open the case by inserting a flat head screw driver in the slot at the bottom of the card and gently prising the case open. Remove the circuit board and replace the batteries. Replace the circuit board, casing cover, screw and label.

Data Reset

The keycard can store up to 14 doors, seven for each button.

To clear the stored gate information from the keycard hold down both buttons for 3 seconds.

Specifications

Dimensions

Length	3 3/8"
Width	2 1/8"
Depth	3/8"

System Specifications

Wake up frequency	125 kHz
Communications frequency	2.4 GHz
Operating temperature	0 °C - 50 °C (Battery Specification)
Typical battery life	5 years
Battery type	1 x CR2430

Read range with Net2Air Keycard


With button - all readers	up to 50 yards
P38	3 feet
P50	4 feet
P75	5 feet
P200	8 feet
P200 metal mount	6 feet

FCC Compliance

This device complies with Part 15 of the FCC Rules. Operation is subject to the following two conditions: (1) this device may not cause harmful interference, and (2) this device must accept any interference received, including interference that may cause undesired operation.

Changes or modifications not expressly approved by the party responsible for compliance could void the user's authority to operate the equipment.

Technical Support

 1 800 672 PAXT

support@paxton-access.co.uk

Technical help is available: Monday - Friday from 5am - 5pm PST / 8am - 8pm EST

Other documentation on Net2 can be found on our web site - <http://www.paxton-access.com/>

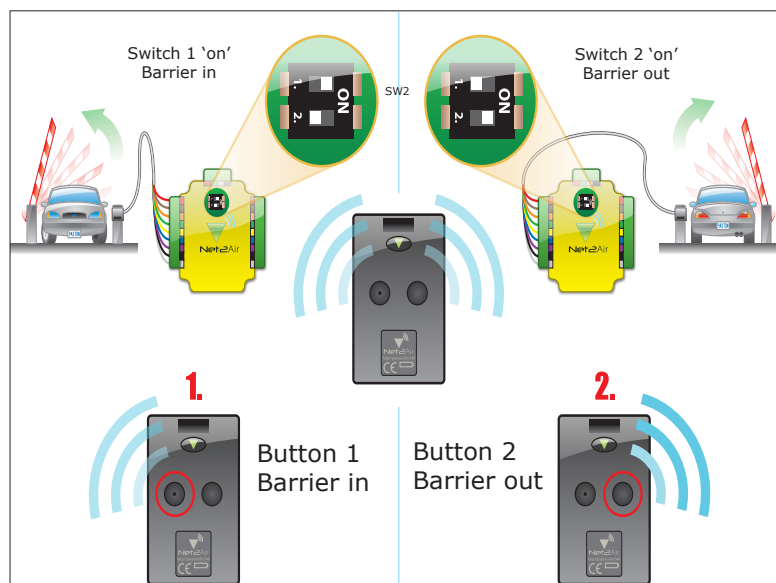
What is Net2Air?

The Net2Air system comprises of a Net2Air Hands Free Interface, a compatible reader (see specification table) and Net2Air keycards or keyfobs. The hands free system operates by using the field being transmitted by the reader to wake up the token. This then communicates with the interface which contains a long range receiver.

The Net2 keycard increases this effective read range to a maximum of 50 yards. This is achieved by activating the system manually instead of using the reader field (maximum 2.7 yards.)

Net2Air keycards also include a standard proximity ID chip and can therefore be presented to any Paxton proximity reader whether they are using the Net2Air interface or not.

The keycard has been designed with features to extend battery life, these include a two second timeout once access has been granted and a capability to prevent repeated access to the same door whilst the keyfob remains in the field of the reader. Leaving the keycard in the field of a reader will reduce battery life.



Interface Settings

To initialise the button functions of a Keycard the interface needs to be configured.

The Net2Air Interface has a pair of switches labelled SW2. When switch one is set to 'on' the interface will respond when button 1 is pressed. When switch two is set to 'on' the interface will respond when button 2 is pressed.

To configure keycard buttons the keycard must first be read by the reader without pressing buttons. The keycard automatically stores the details of the interface and will activate the door using the button specified by the SW2 setting.

Battery replacement

Remove the screw on the back of the card. Open the case by inserting a flat head screw driver in the slot at the bottom of the card and gently prising the case open. Remove the circuit board and replace the batteries. Replace the circuit board, casing cover, screw and label.

Data Reset

The keycard can store up to 14 doors, seven for each button.

To clear the stored gate information from the keycard hold down both buttons for 3 seconds.

Specifications

Dimensions

Length	3 3/8 "
Width	2 1/8 "
Depth	3/8 "

System Specifications

Wake up frequency	125 kHz
Communications frequency	2.4 GHz
Operating temperature	0 °C - 50 °C (Battery Specification)
Typical battery life	5 years
Battery type	1 x CR2430

Read range with Net2Air Keycard

With button - all readers	up to 50 yards
P38	3 feet
P50	4 feet
P75	5 feet
P200	8 feet
P200 metal mount	6 feet

FCC Compliance

This device complies with Part 15 of the FCC Rules. Operation is subject to the following two conditions: (1) this device may not cause harmful interference, and (2) this device must accept any interference received, including interference that may cause undesired operation.

Changes or modifications not expressly approved by the party responsible for compliance could void the user's authority to operate the equipment.