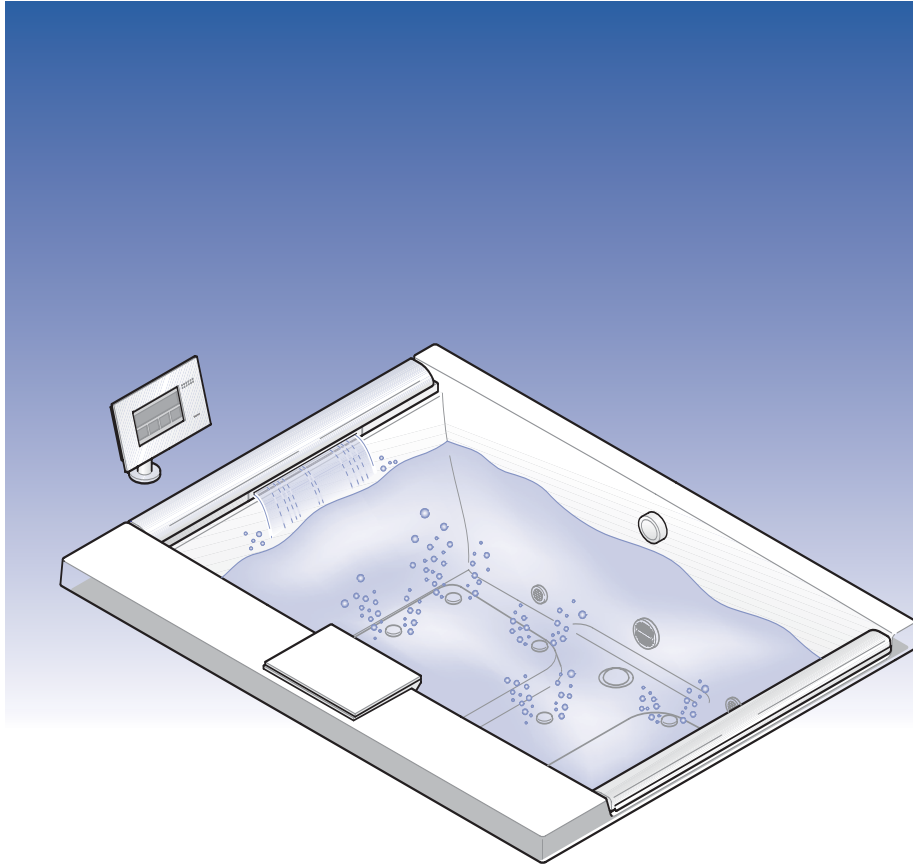


**NEOREST® AIRBATH™**



**NEOREST**

|  |    |                         |
|--|----|-------------------------|
| Important safety instructions.....                 | 2  | <b>Introduction</b>     |
| Operational instructions.....                      | 5  |                         |
| The controller.....                                | 7  |                         |
| Names of parts.....                                | 9  |                         |
| Before using it for the first time.....            | 11 |                         |
| Drain plug.....                                    | 13 | <b>Operation</b>        |
| Cleaning the tub.....                              | 14 |                         |
| Controller stand.....                              | 15 |                         |
| Filling the tub with hot water.....                | 16 |                         |
| Air blower operation.....                          | 17 |                         |
| Cascade water flow operation.....                  | 18 |                         |
| Using the underwater lighting.....                 | 19 |                         |
| Lowering the bath temperature (Cooling water)..... | 20 |                         |
| Raising the bath temperature (Heating water).....  | 21 |                         |
| Adding more hot water (Add water).....             | 22 |                         |
| Using the preference buttons.....                  | 23 | <b>Maintenance</b>      |
| Changing the settings.....                         | 25 |                         |
| Care and cleaning.....                             | 26 |                         |
| Purging/draining the AIRBATH™.....                 | 27 |                         |
| Air nozzle cap.....                                | 29 |                         |
| Lighting modules.....                              | 30 |                         |
| Controller.....                                    | 30 |                         |
| Head rest.....                                     | 31 | <b>Trouble-shooting</b> |
| Sanitizing the tub.....                            | 32 |                         |
| Function module.....                               | 33 |                         |
| Long periods of disuse.....                        | 35 | <b>Limited Warranty</b> |
| When you think something might be wrong.....       | 37 |                         |
| Specifications.....                                | 42 |                         |
| Limited Warranty.....                              | 44 |                         |

Thank you for your recent purchase of the NEOREST® AIRBATH™.  
Please read the enclosed information to ensure the safe use of your product.

# Important safety instructions



**READ AND FOLLOW ALL INSTRUCTIONS.  
SAVE THIS INSTRUCTION with your installation manual.**

Use this unit only for its intended use as described in this manual. Do not use attachments not recommended by TOTO USA, Inc.





Failure to follow the important safety instructions will void the warranty.

If you move, please give this "Instruction Manual" to the person who will occupy your home after you.

This "Instruction Manual" includes various symbols indicating how to use the product safely and properly, how to avoid injury to you and to others and how to avoid damage to property. These symbols and their meanings are described below.

| Symbol   | Meaning   |
|--|---|
|  <b>Warning</b> | This indicates the possibility of a fatality or a serious personal injury if the symbol is ignored and the product is mishandled.   |
|  <b>Caution</b> | This indicates the possibility of a personal injury or only physical damage if the symbol is ignored and the product is mishandled. |

The symbols shown below are displayed in the "Instruction Manual" or on the product so that consumers will be able to use the product safely and properly. Please study the content closely and use the product properly and in accordance with this Instruction Manual.

| Symbol  | Meaning                                     |
|---|---|
|   | "Prohibited" activity that must be avoided. |
|  | Do not disassemble.                         |
|  | "Mandatory" activity that must be done.     |
|  | Please be sure to connect to ground.        |

When using water heaters or other equipment with this product, please follow the applicable handling instructions for that equipment. Mistaken or improper handling can cause unforeseen accidents or breakdowns.

## Warning



Do not take apart

**Do not, under any circumstances, disassemble, repair or modify.**

Otherwise, abnormal operation, injury, fire or electric shock could result. Additionally, leaking water could contaminate or ruin household property.



Prohibited

**Do not use with any voltage but the one specified (120 VAC, 60Hz).**

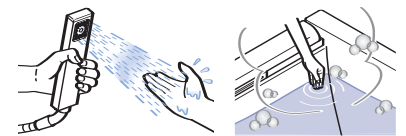
Otherwise, a fire could result.



High temperature warning

**Water temperature in excess of 38°C may be injurious to your health.**

Check and adjust water temperature before use. Risk of hyperthermia and possible drowning.



Prohibited

**Do not use a AIRBATH™ unless all suction guards are installed to prevent body and hair entrapment.**

Risk of accidental injury or drowning.



Prohibited

**Children should not use a AIRBATH™ without adult supervision.**

Risk of accidental injury or drowning.

## Warning



**Do not use kerosene, gasoline, benzene or other flammable substances around the equipment.**  
Otherwise, a fire could result which could cause a burn.

Prohibited



Connect to ground

**Confirm that the grounding (D-type grounding) work has been completed.**

Electric shock or breakdown could result if the product has not been grounded. Please ask your local installer about grounding your product.



Prohibited

**Do not bend, handle the power cords roughly or place heavy objects on them.**

Otherwise, a fire or electric shock could result.



Always do this.

**Ask your retailer, contractor or specialist about installation or moving your equipment.**

If you try to install or move it yourself and something has not been done properly, fire or electrical shock could result. Additionally, leaking water could contaminate or ruin household property.



Prohibited

**Do not look directly into the lighting element of the underwater lights.**

Otherwise, eye injury might result.



Prohibited

**Do not drain the tub while bathing.**

Otherwise, your hands, legs or hair might be drawn into the drain, with the possibility of injury or drowning.



Prohibited

**Do not stand on the edge of the AIRBATH™.**

Otherwise, you may slip and hurt yourself.



Prohibited

**Do not submerge yourself or thrash around in the tub.**

Otherwise, injury or drowning may result.



Always do this.

**To avoid injury, exercise care when entering or exiting a AIRBATH™.**



Prohibited

**Do not grasp the headrest when entering the tub.**

There is a chance that the headrest will come off and injury or drowning will result.



Prohibited

**Do not supply water with a temperature any higher than 158°F (70°C) to the equipment.**

Otherwise, there is a chance of reduced equipment life, damage, scalding or leakage that could wet and cause damage to household property. Also, do not supply water with a temperature lower than 113°F (45°C) for your safety.



Always do this.

**When using the shower, always turn on the cold water first and then slowly turn on the hot water, adjusting to your preferred temperature.**

Otherwise, there is a risk of scalding from very hot water if the hot water is turned on first or quickly.



Always do this.

**When turning off the shower, be sure to turn the hot water off first.**

Otherwise, there is a risk of scalding the next time the shower is used from hot water still remaining in the pipes.



Always do this.

**Let the cold water run for a while after using high-temperature hot water in the shower.**

Otherwise, there is a risk of scalding the next time the shower is used from hot water still remaining in the pipes.



Prohibited

**Do not run hot water over 120°F (49°C) through the shower.**

Otherwise, there is a chance of damage to the shower head, scalding or injury. Please check local code.



Always do this.

**Always keep the cold water supply pressure higher than the hot water supply pressure but not by more than 14.5 psi (0.1MPa).**

If the hot water supply pressure is higher than the cold water supply pressure, there will be a risk of being unable to adjust the water temperature normally or of scalding.



Always do this.

**Check for leaks and loose fittings around the product and piping.**

There is a chance that deterioration, wear and the like will damage parts, leading to scalding, injury or leaks that could damage household property.



Do not touch

**When using high-temperature hot water, do not touch the spout or the shower hose directly.**

A hot spout or shower hose could cause a burn.

 **Warning**


**The check valve needs to be exchanged regularly for security.**

If the check valve doesn't function normal, it can cause the water to back up. It can cause water leaks and other unexpected accidents.

Always do this



**Install to permit access for servicing, install this unit in accordance with the National Electrical Code (NEC) NFPA 70 and Canadian Electrical Code, Part 1.**

Always do this



**Do not permit electric appliances (such as a hair dryer, lamp, telephone, radio, or television) within 1.5 m of this AIRBATH™.**

Prohibited



**The electrical circuit supplied for the AIRBATH™ must include a suitable ground fault circuit interrupter (GFCI) as required by NEC article 680.70. The unit must be connected only to a supply circuit that is protected by a ground fault circuit interrupter (GFCI). Such GFCI should be provided by the installer and should be tested on a routine basis. To test the GFCI, push the reset button. Power should be restored. If the GFCI fails to operate in this manner, the GFCI is defective. If the GFCI interrupts power without the test button being pushed there is a ground current flowing, indicating the possibility of electric shock. Do not use this AIRBATH™. Disconnect the AIRBATH™ and have the problem corrected by a qualified service representative before using.**

Always do this

Risk of electric shock.



**For permanently connected units, a green colored terminal (or wire connector marked “G”, “GR”, or “Ground”, or “Grounding”) is provided within the terminal compartment. To reduce the risk of electric shock, connect this terminal or connector to the grounding terminal of your electric service or supply panel with a conductor equivalent in size to the circuit conductors supplying the equipment.**

Connect to ground



**The suction fitting in this AIRBATH™ is sized to match the specific water flow created by the pump. Should the need arise to replace the suction fitting or the pump, be sure that the flow rates are compatible. Never operate the unit if the suction fitting are broken or missing. Never replace a suction fitting with one rated less than the flow rate marked on the original suction fitting.**

Prohibited



**Install at least 5 feet (1.5m) from all metal surfaces. As an alternative, the AIRBATH™ may be installed within 5 feet of metal surfaces if each metal surface is permanently connected (bonded) by a minimum No. 8 AWG (8.4 mm sq.) solid copper conductor attached to the wire connector on the grounding lug inside the controller on the terminal box.**

Always do this



**At least two lugs marked “bonding lugs” are provided on the external surface or on the inside of the supply terminal box/compartment. To reduce the risk of electric shock, connect the local common bonding grid in the area of the AIRBATH™ to these terminals with an insulated or bare copper conductor not smaller than No. 6 (10 mm sq.).**

Always do this



**Do not use drugs or alcohol before or during the use of an AIRBATH™ equipped with heater to avoid unconsciousness and possible drowning.**

Prohibited

Risk of accidental injury or drowning.  
The use of alcohol, drugs, or medication can greatly increase the risk of fatal hyperthermia.



**People with infectious diseases should not use an AIRBATH™.**

Prohibited



**Persons using medications should consult a physician before using the AIRBATH™ since some medication may induce drowsiness, while other medication may affect heart rate, blood pressure and circulation.**

Always do this

The use of alcohol, drugs, or medication can greatly increase the risk of fatal hyperthermia.



**Pregnant or possibly pregnant women should consult a physician before using the AIRBATH™.**

Always do this



**Do not use the AIRBATH™ immediately following strenuous exercise.**

Prohibited



**Prolonged immersion in the AIRBATH™ may be injurious to your health.**

Prohibited

## Caution



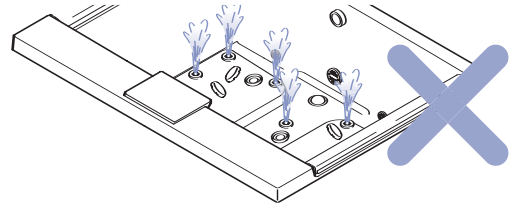
Prohibited

**Do not aim the air bubbles directly at the eyes, nose or ears.**  
Doing so could lead to an infection.



Prohibited

**Do not run the AIRBATH™ with the air bubbler caps removed.**  
Water remaining in the pipes could splash up into the eyes or mouth, risking injury, when draining the tub or if the tub is run while empty. Please replace the air bubbler caps properly before operating the AIRBATH™.



Prohibited

**Do not use when there is a possibility of freezing.**  
If this is done, the pipes could rupture and water could contaminate or ruin household property.



Prohibited

**Do not drop things into the tub or use undue force.**  
**Never drop or insert any object into any opening.**  
Doing so could cause cracking and leaks.



Prohibited

**Do not hit or drop the plated parts.**  
Doing so could crack the plated surfaces, leading to injury. If the plated surfaces should ever crack, please replace the cracked part immediately with a new part.



Prohibited

**Do not let hot water splash outside the AIRBATH™.**  
Water splashing out of the AIRBATH™ could cause flooding outside the bathing area and problems in other rooms (mold, peeling wallpaper, flooring damage, etc.)



Prohibited

**Do not pour paint thinner, other solvents or chemicals down the drain.**  
Doing so could damage or dissolve the drain path, leading to leaks.



Prohibited

**Do not use bath oils. Do not use bath salts containing sulfur, salts, or acids.**  
Doing so could discolor the bathtub; damage the pipes or pumps, leading to leaks.



Prohibited

**Do not use foaming, chlorine-based or anti-mold cleansers.**  
The gases that are produced in reactions with water or moisture can corrode or degrade the stainless steel or other metals.

### **When cleaning, do not use the following cleansers or tools.**

Doing so could cause product problems or an adverse reaction in people, depending upon how they are used.

- **Cleansers labeled "acidic"**

These could cause discoloration or staining of the surface.

- **Cleansers labeled "alkaline"**

These could cause discoloration or staining of the surface.

- **Paint thinner, acetone or other solvents**

These could cause discoloration or staining of the surface. Additionally, there is also a chance of damaging the drain path and subsequent leakage.

- **Chemicals**

These could cause discoloration or staining of the surface. Additionally, there is also a chance of damaging the drain path and subsequent leakage.

- **Cleansers containing chlorine**

These could cause discoloration or staining of the surface. Additionally, the drain plug and plated surfaces could become corroded.

- **Metal scrubbers**

These will scratch and damage the surface of the bathing area and bathtub.

- **Cleansers or polishing powders**

These will cause scratching.

- **Nylon scrubbers**

These will scratch and damage the surface of the bathing area and bathtub.



Prohibited



Always do this

**After using a cleanser, rinse the area well within five minutes.**

If the surface is left with cleanser in place, the bathtub could become discolored or cracks could develop.



## Caution



Prohibited

**Do not expose to fire or flame.**

Please do not approach the bathing area with lit cigarettes or other burning material. Doing so could cause a fire or burns.



Prohibited

**Do not leave items out that rust easily.**

Leaving hairpins, razors or other items that rust easily in the bathing area could leave rust marks on the surface.



Always do this

**If cosmetics or similar substances get on the product, wash it with water immediately.**

Leaving cleansing lotions, hair treatment, hair coloring or similar agents on the surface could cause discoloration.



Prohibited

**Do not sit on or climb onto the function module, shower lid, pillow, or controller stand.**Doing so could cause a fall or injury.  
Components may deform and/or break.

Always do this

**When not using the product for long periods, turn off the breaker.**

This could prevent an unforeseen accident.



Prohibited

**Avoid powerful forces and impacts.**

Damage could lead to leaks, which could lead to water damage of household property.



Always do this

**When not using for long periods, shut off the water main or the plumbing fixtures completely.**

Otherwise, leaks or other unforeseen accidents could result.



Always do this

**Operate the shower handle slowly.**

Turning it off rapidly can cause a loud "boom" (water hammer), which will have an impact on the plumbing fixtures, which could lead to leaks and water damage to household property. Water hammer arrestors are recommended to be installed in the plumbing system to minimize water hammer.



Prohibited

**Do not put controller near ears.**

It sometimes produces loud noises and could contribute to hearing damage.



Prohibited

**Do not apply grease to the hinge part of the shower lid.**

It can affect the open/close function of the lid. It can get heavier or lighter, close suddenly and catch your finger.



Prohibited

**Do not remove the shower lid.**

You may be injured or the shower lid may be damaged. If it is removed, please re-attach it.

# Operational instructions

## Please observe the following.

**Do not allow an excess of water in the shower box.**

There is a drainage tray inside, but an overflow can cause water leaks.

**Be careful with the shower lid when it's open.**

The corner of the lid can cause you injury.

**Do not close the shower lid if the shower head is not inside.**

It may damage the shower.

**In the event of lightning storms, immediately turn off the product or shut off the circuit breaker.**

Lightning can cause temporary current surges, which may cause damage.

**Use only genuine parts with this product.**

Otherwise, an unforeseen accident could result.

**Keep the area around the product neat.**

If the area is messy, with weeds, sawdust, boxes or other debris, you may find cockroaches or spiders' nests inside the equipment, which could cause damage or fire.

**Keep the AIRBATH™ neat and clean.**

If there is bath water residue, trace amounts of copper ions in the water could react with the fatty acids in the soap, causing a bluish tinge.

**Clean out the AIRBATH™ intake filter carefully.**

This is to prevent pump damage.

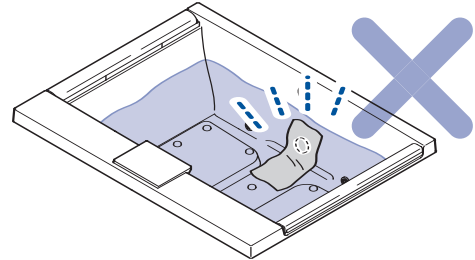
**Do not intentionally pour water over the controller.**

It is water resistant, but large amounts of water can cause damage.

**Do not cover the AIRBATH™ intake with a towel or washcloth.**

**Do not put things in the intake.**

This can cause damage to the equipment.

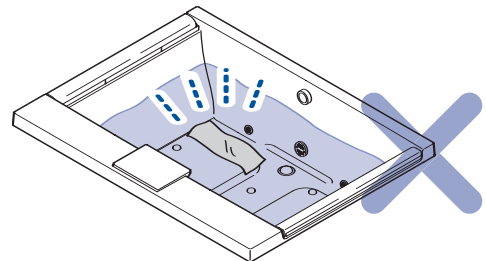


**Do not use with water from a hot spring, well water or ground water.**

Depending on the water quality, foreign matter could adhere to the plumbing fixtures in the equipment, causing corrosion or leakage.

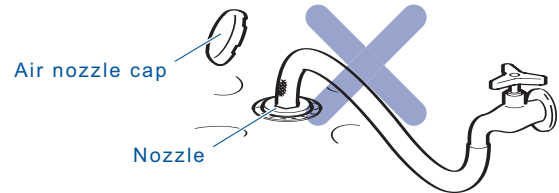
**Do not block the nozzle or air nozzle cap.**

Doing so could cause problems.



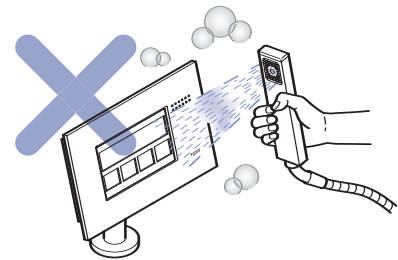
**Do not apply pressure inside the nozzle or run water through it.**

Water could get inside the air pump and break it.



**Do not pour hot water over the controller or subject it to impact.**

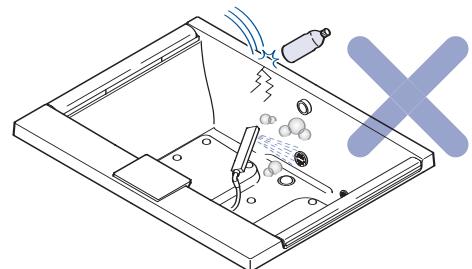
Doing so could break it.



**Do not pour hot water over the AIRBATH™ intake port or other fittings or subject them to impact.**

Direct contact between the AIRBATH™ surface and hot water in excess of 140°F (60°C) can damage the surface.

Dropping or striking the tub with makeup bottles or other hard objects can cause scratches.



**Do not use emulsion-type bath additives.**

White powder may remain inside the pump or plumbing fittings, causing cloudy water to spray out when using the air blower or shoulder warmer.

For other types of bath additives, please read the instructions carefully and use them properly.

**When using bath bubbles, do not run the air blower or shoulder warmer.**

Doing so will generate a large amount of bubbles and the bubbles could remain in the pump or in the plumbing fittings.

# The controller

## NEOREST Setting the language

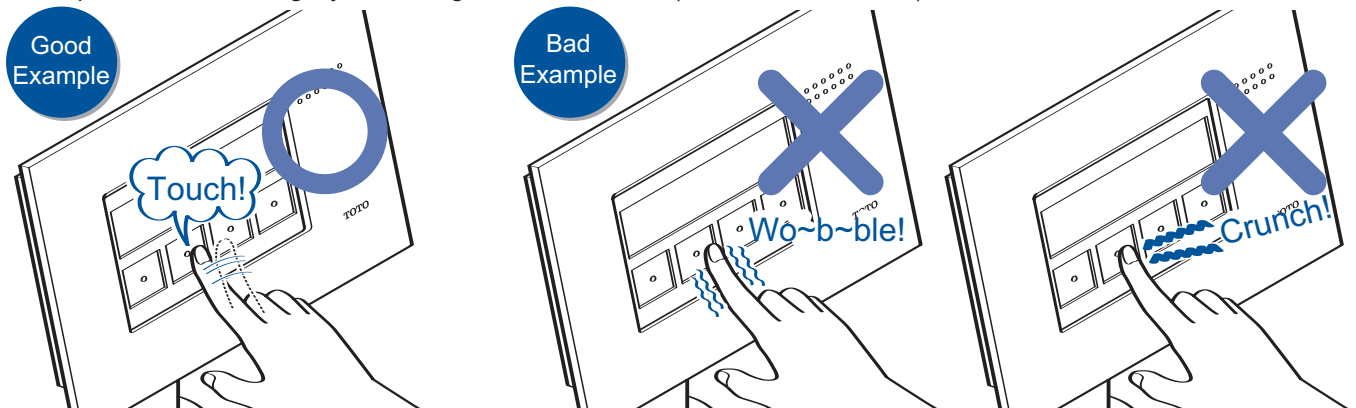
The controller can be set to the following languages. >>> P. 25

- English (Initial Setting)
- Chinese (Simplified)
- Chinese (Traditional)
- Thai

\* This owner's manual explains how to operate the controller screens when they are set to English. When referring to the owner's manual, please set the language to English.

## NEOREST Pushing the buttons

Please press the buttons lightly with a finger near the center (the small raised area).



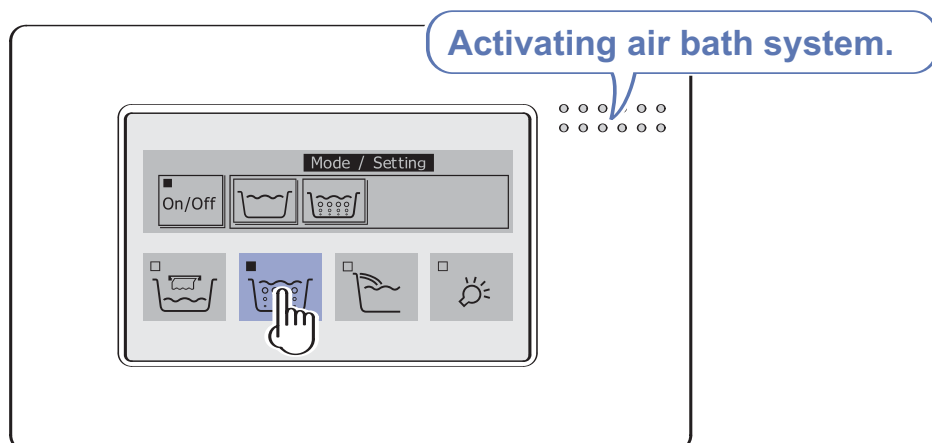
- Each button may have its own feel, but this is normal.
- The buttons may not work if they are not pressed near the center.
- It will not work to press two or more buttons at the same time.
- The buttons may not work when pressed while wearing gloves.

\* Please do not place objects near the controller or cover it with towels. It may stop working.

## NEOREST Audio guide functions

Audio description of operations.

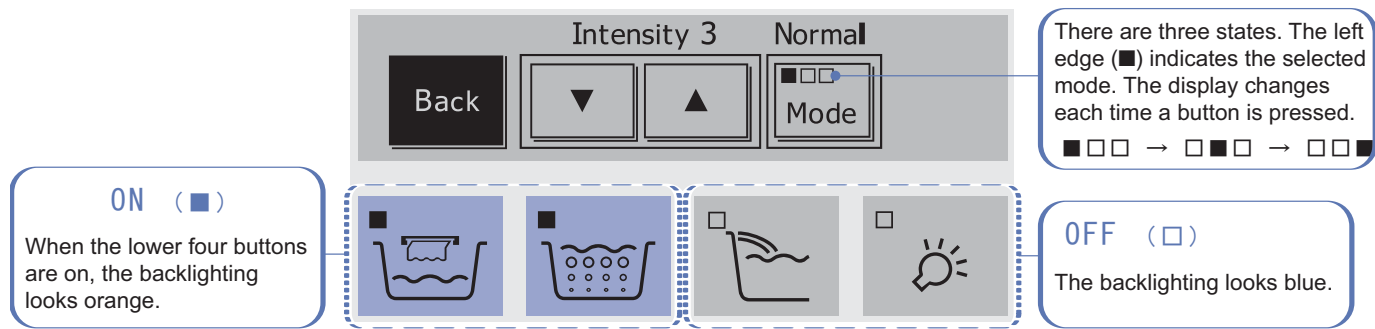
\* When the speaker is emitting sound, there may be some noise (sounds like rushing air), but this is normal. If the sound bothers you, turn down the volume or turn off the audio guide. >>> P. 25





## NEOREST Button status

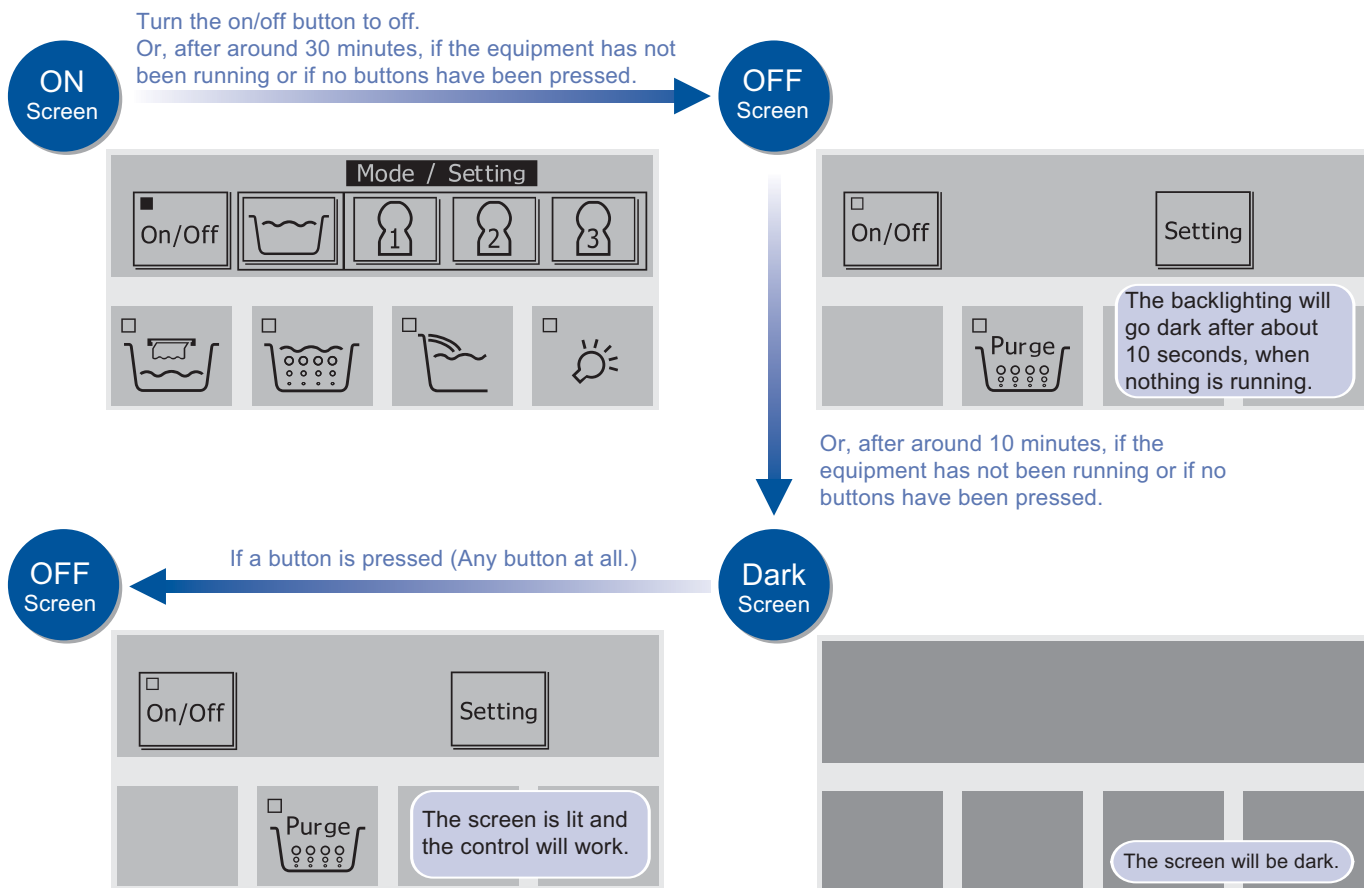
Buttons displaying a  or a  indicate their operating mode or the fact that they are on or off.



## NEOREST Turning off the display

If a specific amount of time passes without any controller operations after all operations have stopped, then the screen will go out by itself.

Pressing a button (there is no display) will turn the screen on and make operation possible.



## NEOREST Other

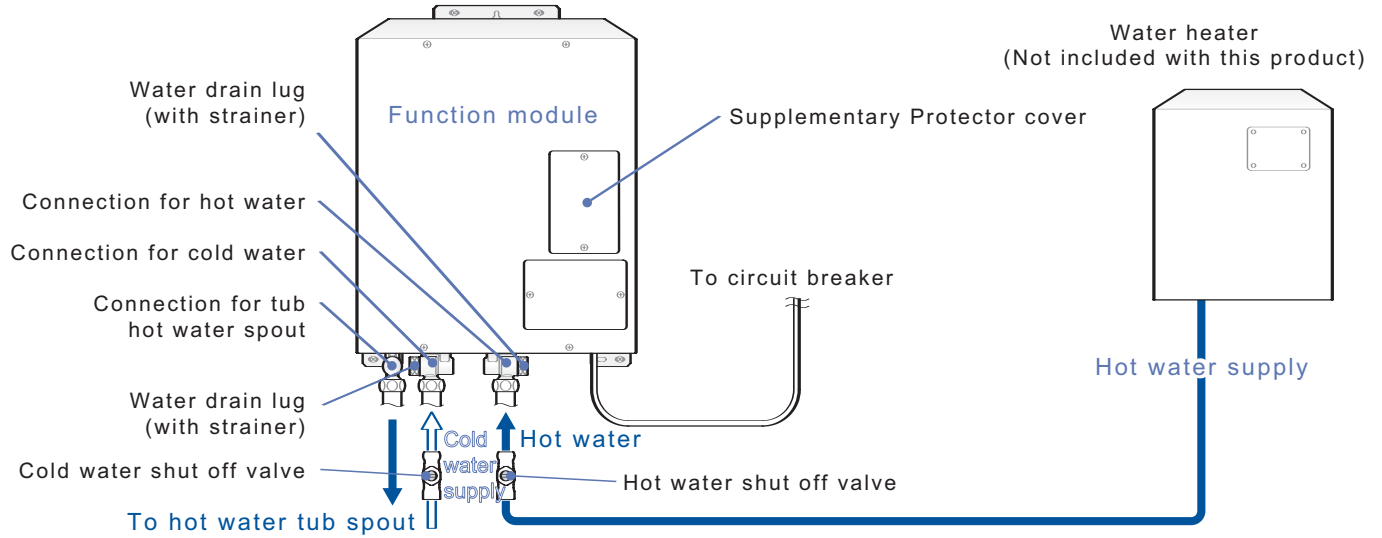
There may be times when the display flashes or when there are streaks of color or brightness in the backlighting, but these are not things that will affect the operation of the controller. Please be aware of that in advance.

There may be times when the controller will stop working in close proximity (around 20 inches (50 cm)) to an incandescent light or in direct sunlight. Please adjust the angle of the controller stand or darken the surroundings before continuing.

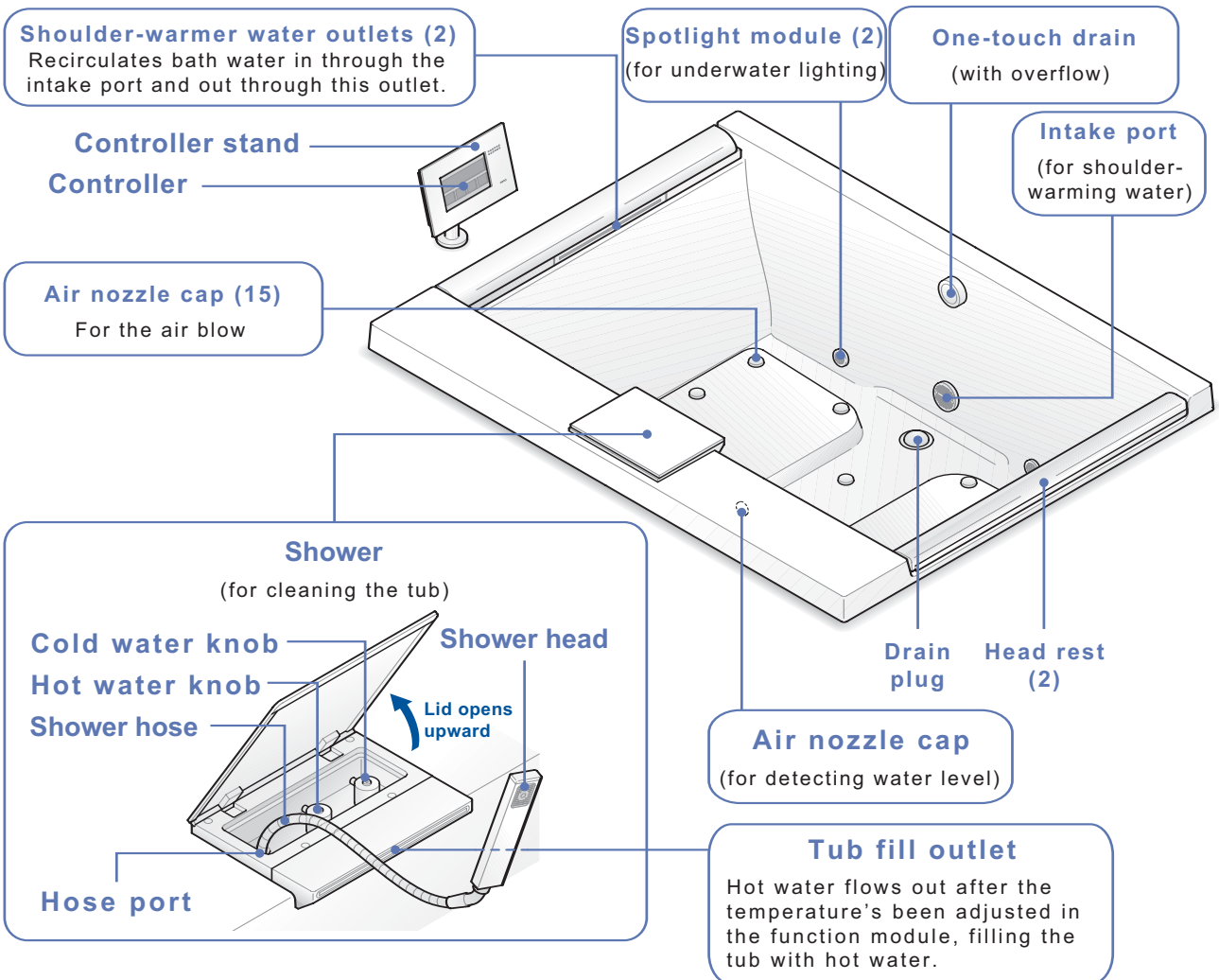
# Names of parts

## NEOREST Function module

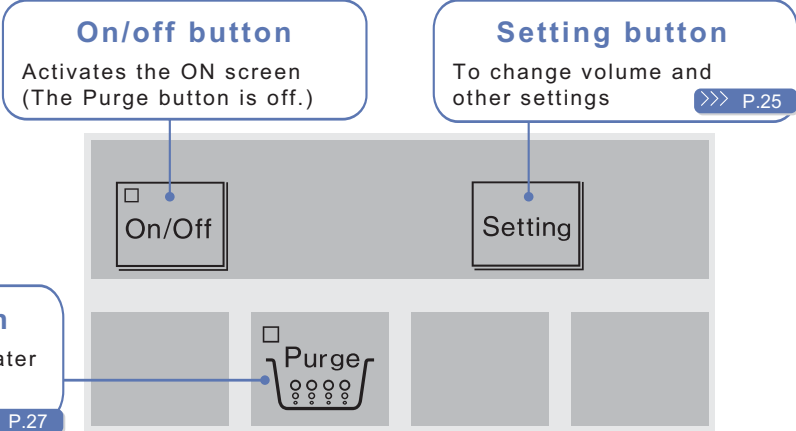
\* The diagram shows a sample installation



## NEOREST Bathtub

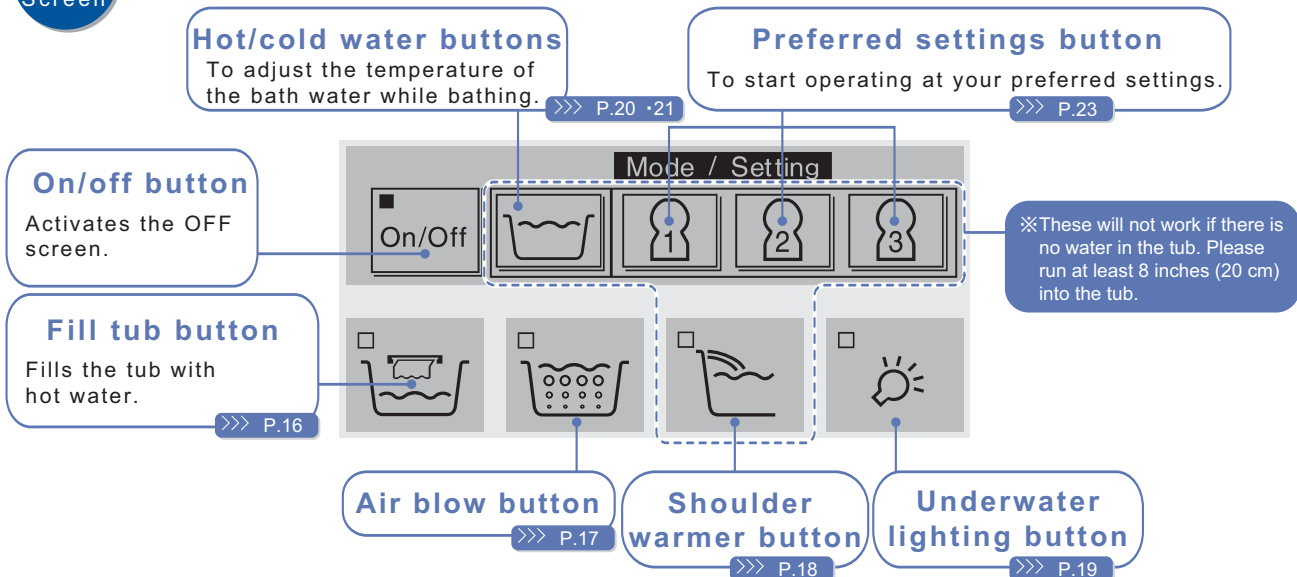


**OFF**  
Screen



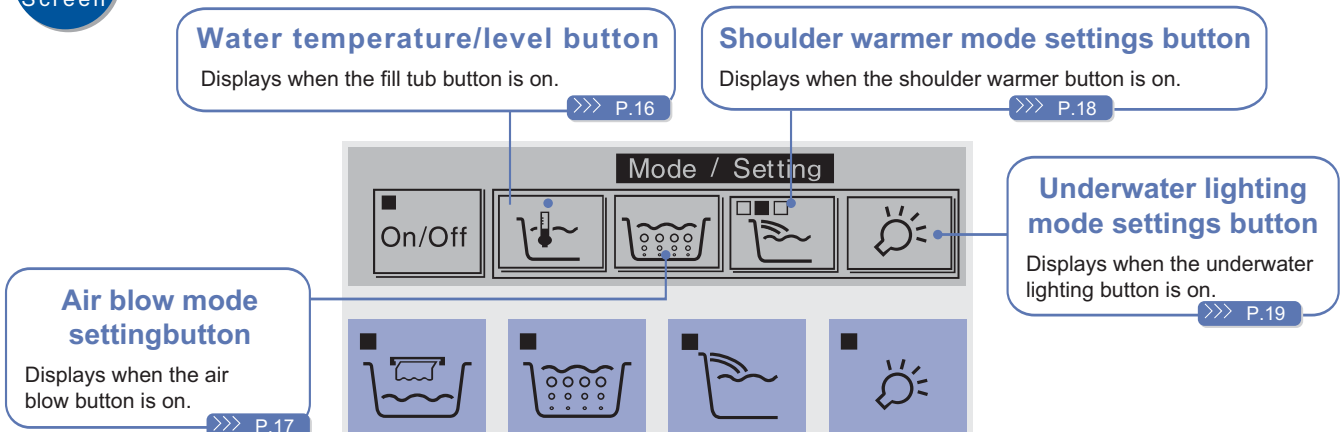
**ON**  
Screen

Example: When the four lower buttons are all off.



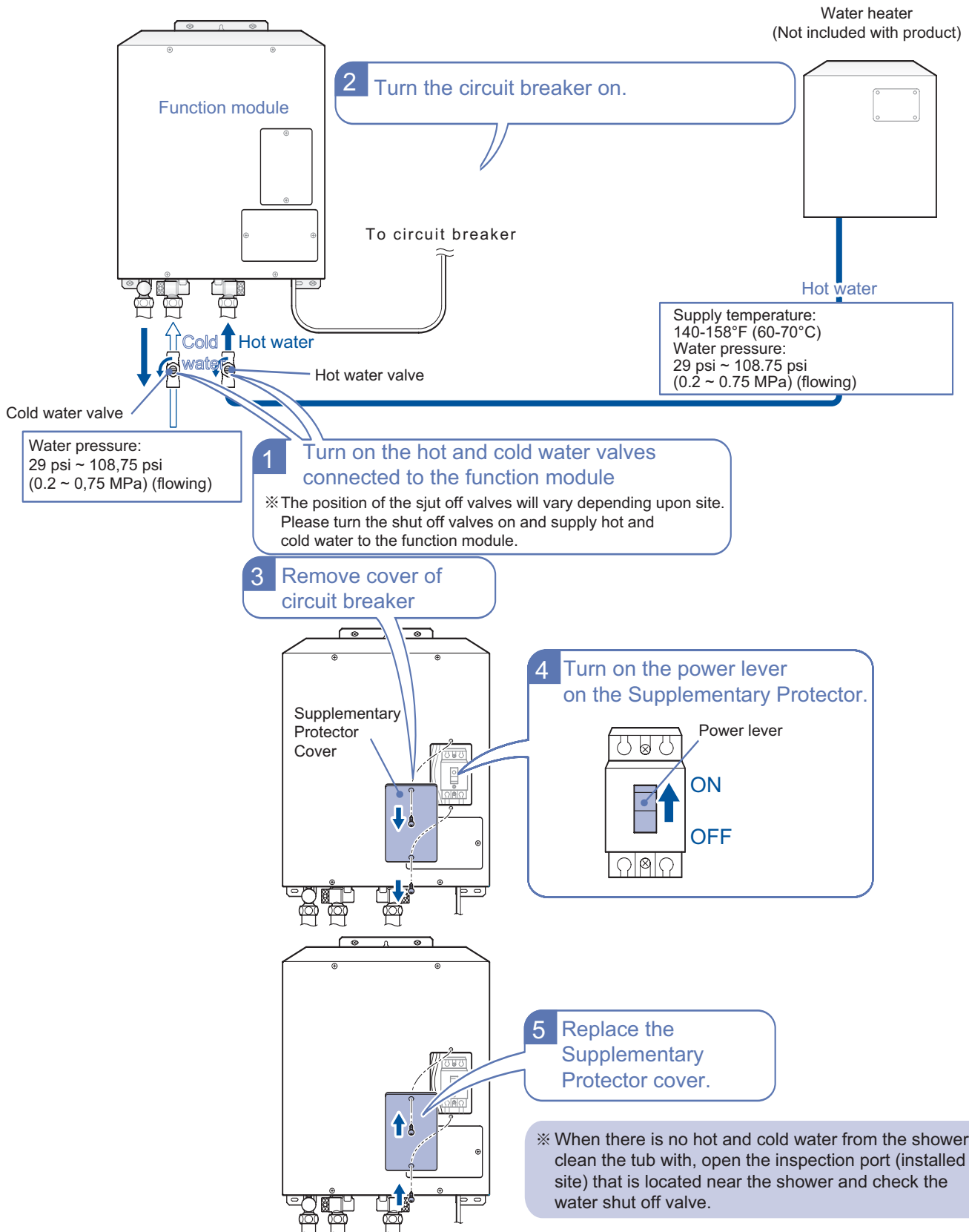
**ON**  
Screen

Example: When the four lower buttons are all on.



# Before using it for the first time

## NEOREST Procedure for first-time use



**The temperature of the hot water into the function module must be at least 140°F (60°C). (158°F (70°C) or less).**

If the temperature of the hot water supply is low, it won't be possible to fill the tub with water at the temperature set using the controller. The function module mixes the hot and cold water, releasing it from the outlet to fill the tub with warm water, so the temperature of the water coming from the outlet is always lower than that of the hot water supply.

**The hot and cold water pressure to the function module must be at least 29 psi (0.2 MPa) (when flowing). (less than 108.75 psi (0.2 ~ 0.75 MPa)).**

Always keep the cold water supply pressure higher than the hot water supply pressure but not by more than 14.5 psi (0.1 MPa). If the pressure is low, the water will not flow like a waterfall. Also, it will take a long time to fill the tub.

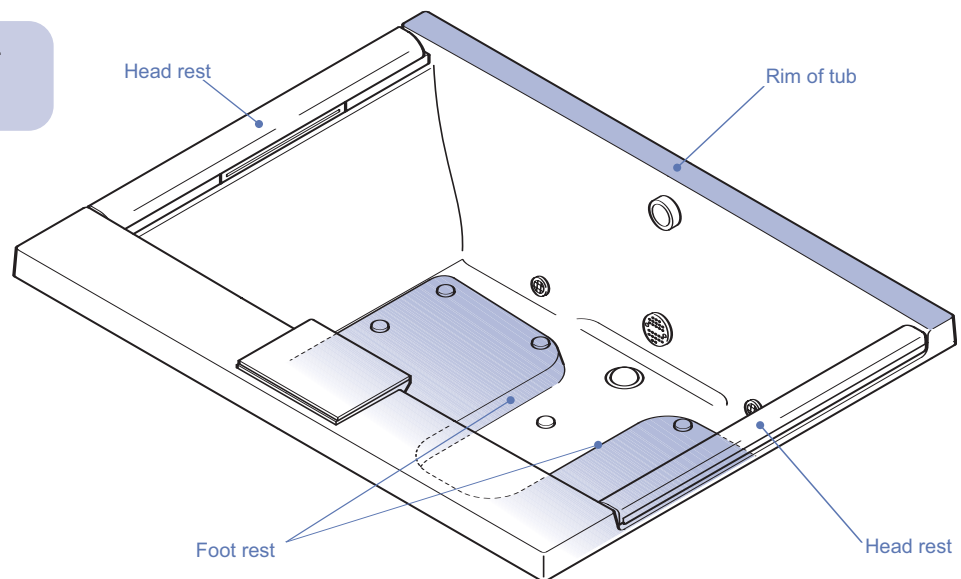
**Please keep about 8 inches (20 cm) of water in the tub while bathing.**

If the water level is low, there may be some functions that don't work, like the shoulder warmer.

**The tub has foot rests for your feet for maintaining a proper bathing position in the tub.**

Please avoid sliding into the tub by keeping your hands on the rim of the tub or your feet on the foot rests.

※ Please do not grasp the head rests.  
They could come out, and injury or drowning could result.

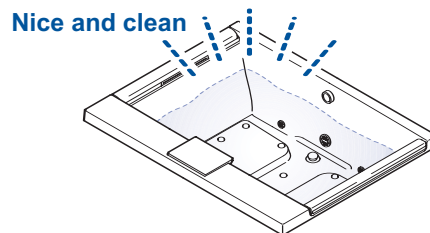


**For a pleasant bathing experience, please change the water in the tub daily.**

**We also recommend draining the water out of the tub soon after bathing.**

**When draining the tub, run the water draining function to remove the residual water from the pipes. >>> P. 27**

If the water is frequently left in the tub until the next day or if the tub is drained but the residual water not removed, residue could build up in the pipes, causing an offensive odor.

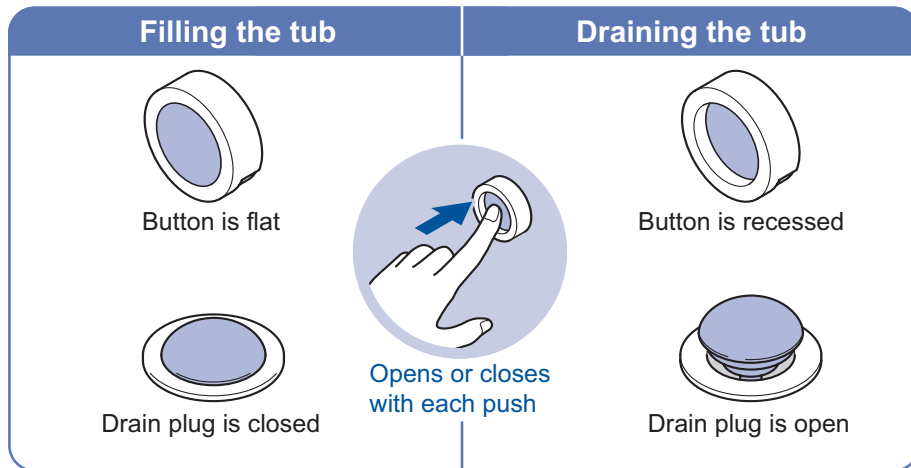
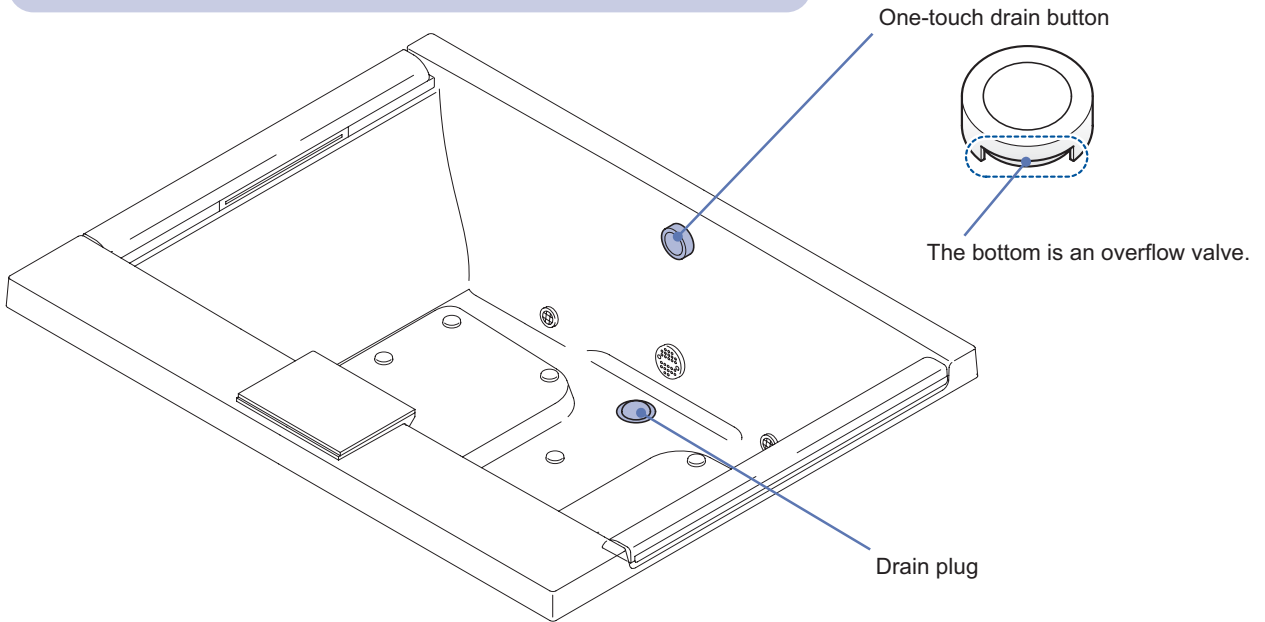


# Drain plug

## NEOREST One-touch drain

This is a drain plug that can be opened and closed with the single touch of a button.

※Please press the button slowly.  
If it is pressed too quickly, it could pop the drain plug out of place.

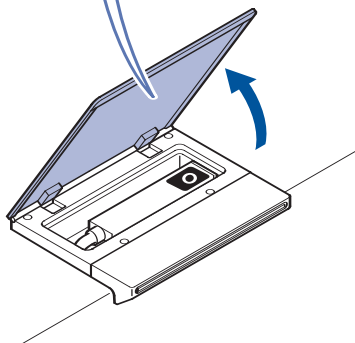


# Cleaning the tub

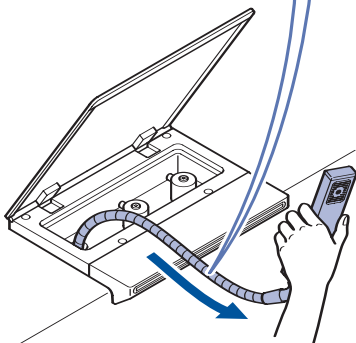
The shower for cleaning the tub is stored in the outlet module that fills the tub.

## NEOREST Running the water

**1** Open the lid on top of the tub filling outlet.

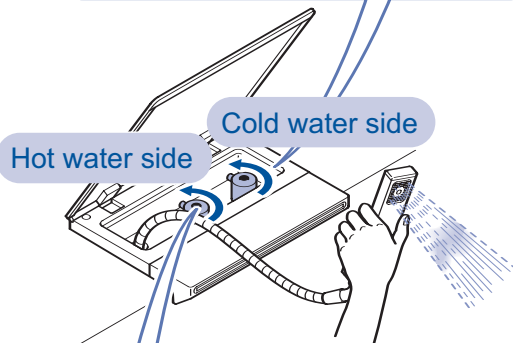


**2** Pull out the shower hose.  
 ※ Please do not use undue force. Otherwise, leaks or damage could result.

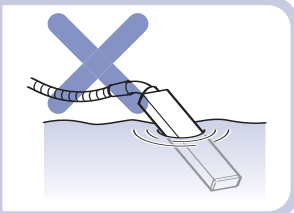


**3** Turn the cold water side knob counterclockwise.

※ Starting with the hot water will result in only hot water coming out, which could cause scalding.



※ Please do not immerse the shower head under water during use. When there is no water pressure (such as when the water has been shut off), there is a chance that the bath water will be drawn back inside the water pipes.

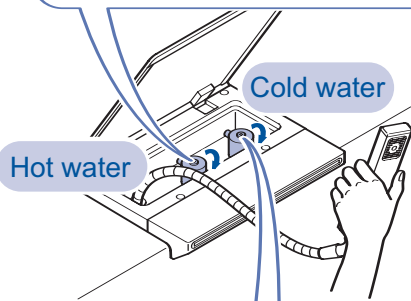


**4** Turn the hot water knob counterclockwise and adjust the water flow and temperature.

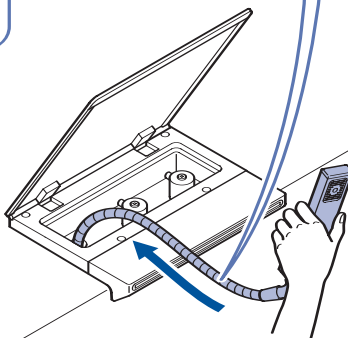
## NEOREST Turning off the water

※ Please turn the knob slowly. Turning it off rapidly can cause a loud “boom” (water hammer), which will have an impact on the plumbing fixtures, which could lead to leaks and water damage to household property.

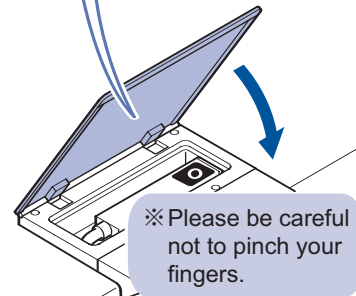
**1** Be sure to start with the hot water and turn the knob clockwise.  
 ※ Starting with the cold water would leave just the hot water running, which could cause scalding.



**3** Reinsert the shower hose.



**4** Close the lid



**2** Turn the cold water knob clockwise.

Caution: Do not insert the shower head downward. It may be damaged.

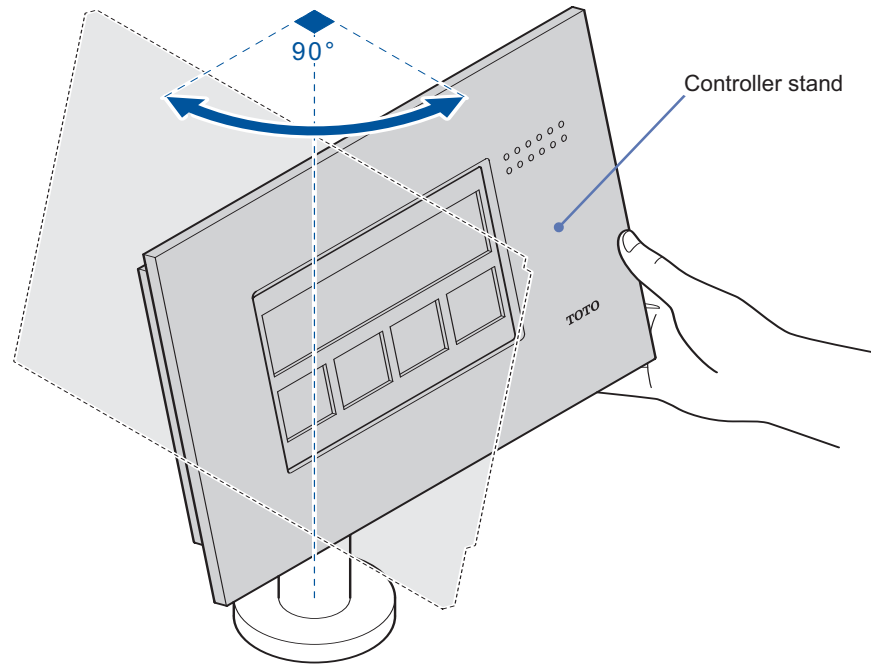
※ After cleaning the tub, please press the purge button on the controller and drain the water. >>> P.27

# Controller stand

The controller stand rotates 90°.

Please rotate it so that it is easy to use.

- \* Please do not apply too much force, otherwise it could break.
- \* The controller stand may seem harder to rotate after it has been used for a while compared with when it was new. This is because the inner parts adjust with use and become more settled. The controller is not broken.
- \* The room temperature must be under 122°F (50°C). Otherwise, damage may result.






# Filling the tub with hot water

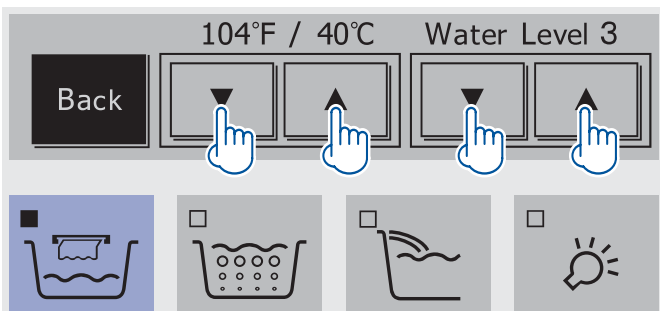
The tub is filled with water at a preset temperature. The process stops automatically when the preset water level is reached.


**1** Close the drain plug and turn the On/Off button to on.

**2** Turn on the 

▶ After around 10 seconds (but at most 30 seconds), warm water will begin to flow from the outlet.

**3** Setting the tub water temperature and level.



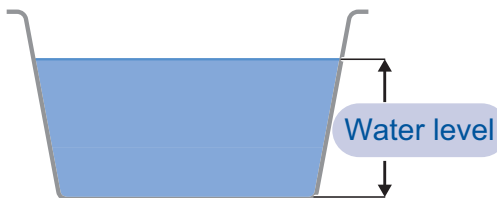
※ When the remote control screen does not appear on the display at left, please press the 

| Temperature (Guide) |    |
|---------------------|----|
| °F                  | °C |
| 113                 | 45 |
| 111                 | 44 |
| 109                 | 43 |
| 108                 | 42 |
| 106                 | 41 |
| 104                 | 40 |
| 102                 | 39 |
| 100                 | 38 |
| 99                  | 37 |
| 97                  | 36 |
| 95                  | 35 |
| Low (cold)          |    |

| Water level |                                     |
|-------------|-------------------------------------|
| Setting     | Guide                               |
| 5           | ≈ 143 gal. (550 L); ≈ 15.5" (39 cm) |
| 4           | ≈ 130 gal. (500 L); ≈ 14.5" (36 cm) |
| 3           | ≈ 117 gal. (450 L); ≈ 13" (33 cm)   |
| 2           | ≈ 104 gal. (400 L); ≈ 12" (30 cm)   |
| 1           | ≈ 91 gal. (350 L); ≈ 11" (27 cm)    |

Initial Setting

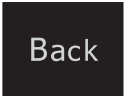
Initial Setting



※ The temperature of the water coming from the outlet that fills the tub and the temperature settings will not necessarily match due to such factors as ambient temperature and water pipe length. Please use these as a guide.

※ The water level is a guide for filling the tub when empty. If there is water still in the tub, the water level will vary. >>> P.22

※ The temperature and level of the water for filling the tub will be stored in memory.

**4** Press the 

▶ If the remote control is not used, the system returns to auto after around one minute.

● When the tub has been filled, a melody will be played and then stop.

● When you want to stop filling the tub, turn the  to off.

(The water flow will stop after about 10 seconds.)

# Air blower operation

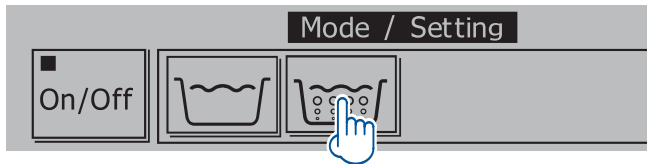
1 Fill the tub with water >>> P.16

2 Turn the 

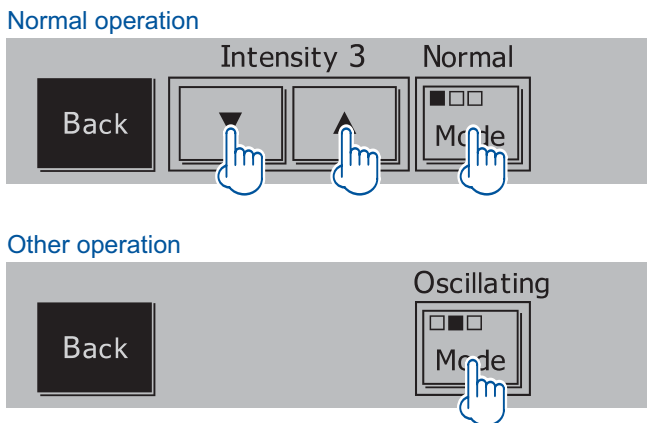
※Turn the On/Off button to on.

▶ Air will come out of the air nozzle cap.

3 Change the screen.



4 Set the operating mode and the bubble intensity.




| Mode        | Bubble intensity     | Description of operations  |
|-------------|----------------------|--|
| Normal      | 5                    | Runs at the bubble intensity settings.                           |
|             | 4                    |  |
|             | 3 (Initial settings) |  |
|             | 2                    |  |
|             | 1                    |  |
| Oscillating | Cannot be set        | The bubble intensity changes as follows:<br>5→4→...→1→2→...→5... |
| Pulsating   | Cannot be set        | The bubble intensity is varied suddenly as follows: 5→1→5→1→...  |

※The operating mode and bubble intensity settings are stored in memory.


5 Press 

▶ If the remote control is not used, the system returns to auto after around one minute.

- After starting operations 2 or 4, the system will automatically stop after approximately 15 minutes has gone by on the time.
- The time settings on the timer can be set to approximately 30 minutes. >>> P.25
- When you want to stop the air blower, press the  to off.

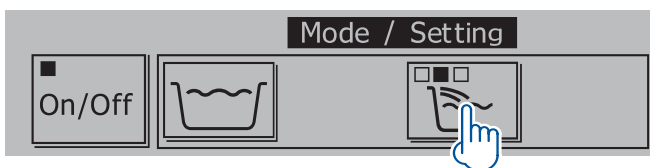
# Cascade water flow operation

1 Fill the tub with water. >>> P.16

2 Press the  to on.

- ※ Do this with the On/Off button pressed on.
- ※ The bathtub won't function unless it has water in it. Please put at least 8 inches (20 cm) of water in the tub.
- ※ Please be forewarned that tepid water that is inside the pipes will first flow from the outlet during initial operation. The system can also be set so that the shoulder warmer goes through a warm-up operation automatically once the tub fills up. >>> P.25


3 Set the operating mode.



| Operating mode                      |                                     |  |
|-------------------------------------|-------------------------------------|--|
| <input type="checkbox"/>            | <input type="checkbox"/>            | Weak   |
| <input checked="" type="checkbox"/> | <input checked="" type="checkbox"/> | Medium <span style="color: blue;">Initial setting</span> |
| <input type="checkbox"/>            | <input type="checkbox"/>            | Strong   |

※ The operating mode setting is stored.

Operation

- After starting operations 2 or 3, the system will automatically stop after approximately 15 minutes has gone by on the time.
- The time settings on the timer can be set to approximately 30 minutes. >>> P.25
- When you want to stop the shoulder warmer, press the  to off.

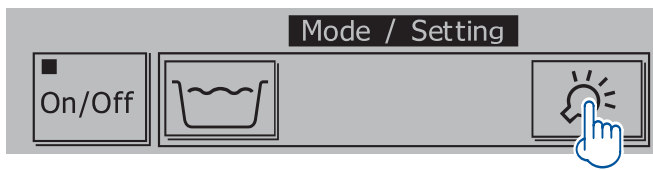
# Using the underwater lighting

1 Fill the tub with water. >>> P.16

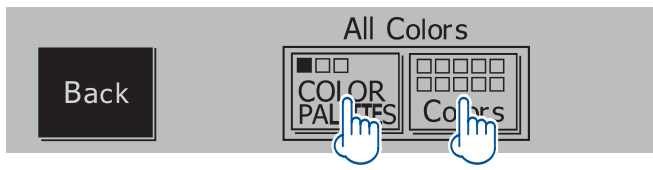
2 Press the  to on.

※Do this with the On/Off button pressed on.  
▶ The underwater spot lights will go on.  
It is effective to darken the bathing area to enjoy a light show.

3 Change the screen.



4 Set the operating mode.




| Operating Mode |                               | Description of Operation        |
|----------------|-------------------------------|---------------------------------|
| COLOR PALETTES | All colors (Initial Settings) | All colors go on in order.      |
|                | Cool Colors                   | The cool colors go on in order. |
|                | Warm Colors                   | The warm colors go on in order. |
| Colors         | Light Blue                    | The specified color goes on.    |
|                | Blue                          |                                 |
|                | Blue Green                    |                                 |
|                | Light Green                   |                                 |
|                | Green                         |                                 |
|                | Orange                        |                                 |
|                | Red                           |                                 |
|                | Pink                          |                                 |
|                | Purple                        |                                 |
|                | White                         |                                 |

※ The operating mode setting is stored.

5 Press 

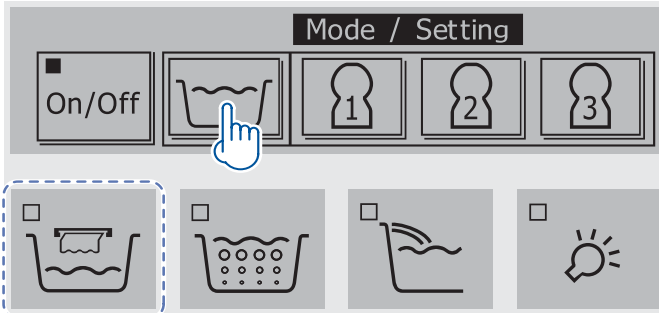
▶ If the remote control is not used, the system returns to auto after around one minute.

- After starting operations 2 or 4, the system will automatically stop after approximately 15 minutes has gone by on the time.
- The time settings on the timer can be set to approximately 30 minutes. >>> P.25
- When you want to stop the underwater lighting, press the  to off.

# Lowering the bath temperature (Cooling water)

This adds cold water to lower the temperature of the bath water.

## 1 Switch screens



※Turn this button off.

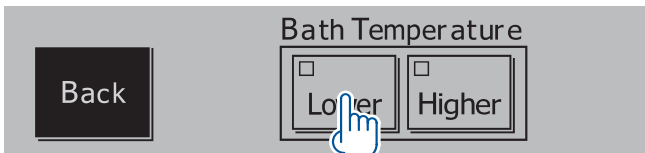


Or, check to see that it is set.

※Please set the On/Off button to on

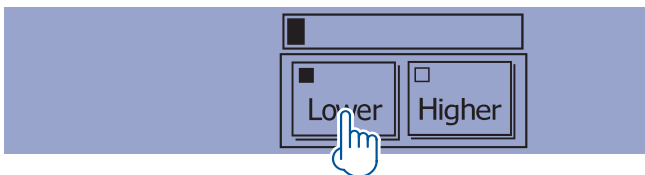
※This won't work unless there is water in the Air Tub.  
Put water in the Air Tub. >>> P.16

## 2 Turn the Lower button on.



▶ After about 10 seconds (but at most 30 seconds), cold water will flow from the Fill-Tub outlet.

## 3 When the bath water has reached the desired temperature, turn off the Lower button.



▶ The water flow will stop after about 10 seconds. When the horizontal gauge (approximate 26 gal (100L)) on the screen reaches the end, it will stop automatically.

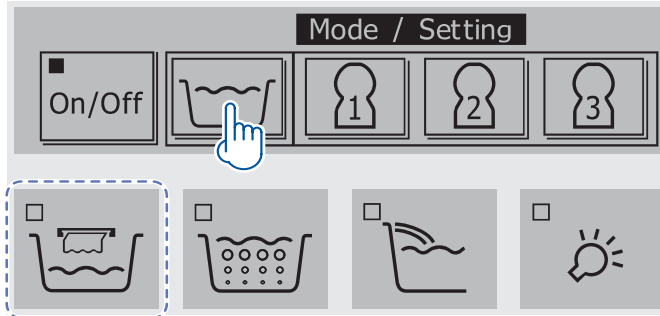
## 4 Press

※ This won't work if the Lower button or the Higher button is on.

# Raising the bath temperature (Heating water)

This adds hot water to raise the temperature of the bath water.

## 1 Switch screens



※Turn this button off.

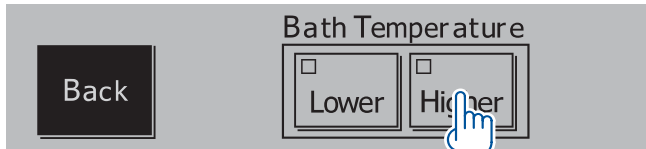


Or, check to see that it is set.

※Please set the On/Off button to on.

※This won't work unless there is water in the Air Tub.  
Put water in the Air Tub. >>> P.16

## 2 Turn the Higher button on for one second.

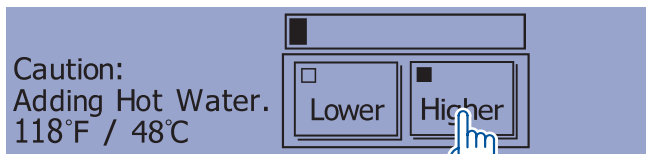


※ Press for one second

▶ Please press for one second.  
The water flow will start after about 10 seconds (but at most 30 seconds).

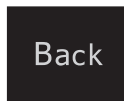
※Water that is 118°F/48°C will flow from the Fill-Tub outlet. Please be careful of the high temperature.

## 3 When the bath water has reached the desired temperature, turn off the Higher button.



▶ When the horizontal gauge (approximate 26 gal (100L)) on the screen reaches the end, it will stop automatically. The water flow will stop after about 10 seconds.

## 4 Press Back



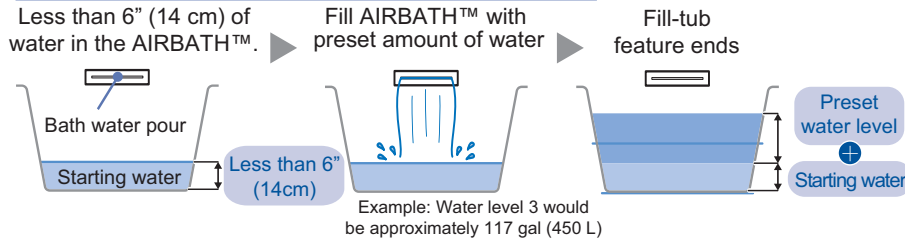
※This won't work if the Lower button or the Higher button is on.

# Adding more water (Add water)

※ The method is the same as for filling the AIRBATH™ >>> P.16 Water at the preset temperature will be added to the Air Tub.

The amount of water in the tub after using the Fill-Tub feature will vary with the amount of water that was in the tub to begin with.

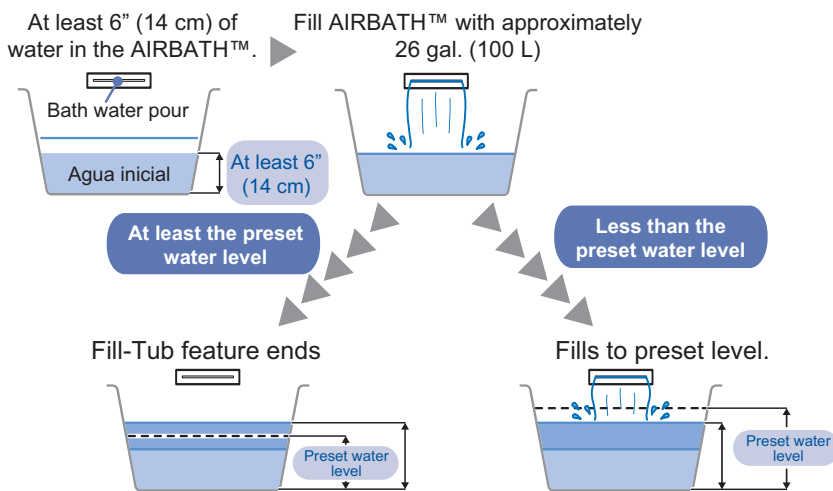
## When starting with less than 6 inches (14 cm) of water in the tub.



▶ The water level will increase by the amount of starting water.

※ The guide shows a depth of less than 6 inches (14 cm) of starting water.

## When starting with at least 6 inches (14 cm) of water in the tub.



▶ Approximately 26 gal. (100 L) of water will be added. If the preset water level is not reached, the AIRBATH™ will fill to the preset level.

※ The guide shows a depth of at least 6 inches (14 cm) of starting water.

※ The amount of water in the tub will vary.

1 Turn on the 

※ Please set the On/Off button to on.

▶ After about 10 seconds (but at most 30 seconds), water will flow from the fill-tub outlet.

2 If changing the Fill-Tub temperature or water level, please do so.

※ Put water in the AIRBATH™. >>> P.16

3 Press 

▶ The remote control will automatically go back after about one minute without operation.

4 When the desired water level has been reached turn the

 off.

▶ When approximate 26 gal. (100 L) has been added to the AIRBATH™ or the preset water level has been reached, there will be music and the filling will stop automatically. The water flow will stop after about 10 seconds.

# Using the preference buttons

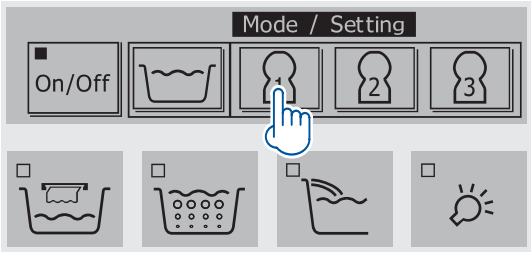
The preference buttons can be set to your preferred operations (air blower, shoulder warmer, underwater lighting). Up to three patterns can be set using the preference buttons.

## NEOREST Configuring the settings

1 Put water in the AIRBATH™. >> P.16

2 With water in the AIRBATH™, press one of the three preference buttons.

※In this example, we press preference button 1.

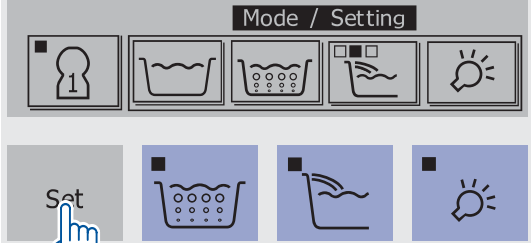


※Please set the On/Off button to on.  
 ※This won't work unless there is water in the AIRBATH™. Please have at least 8 inches (20 cm) of water in the AIRBATH™.  
 ※When the preference button does not display, please set all four of the lower buttons to off.

3 Operating the air blower, shoulder warmer or underwater lighting at your preferred settings.

▶ Operating the air blower >>> P.17  
 ▶ Operating the shoulder warmer >>> P.18  
 ▶ Operating the underwater lighting >>> P.19


4 When you have configured your preferred settings, press the set button and the settings will be complete.



▶ When the settings have been configured, the display colors of the numeral on the preference button will be reversed.



※Settings are stored.

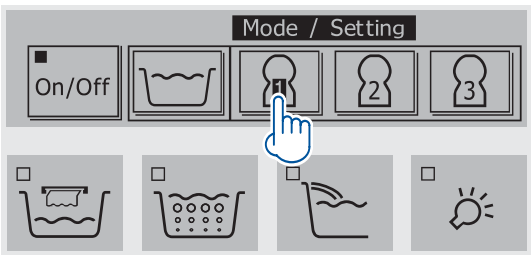
5 To end operation with the preference button, press the  again.

## NEOREST Operation using the preference buttons

1 Put water in the AIRBATH™. >>> P.16

2 Press one of the three configured (numeral display colors reversed) preference buttons (1 ~ 3) and begin operation.

※In this example, we press preference button 1.



※Please set the On/Off button to on.  
 ※This won't work unless there is water in the AIRBATH™. Please have at least 8 inches (20 cm) of water in the AIRBATH™.  
 ※When the preference button does not display, please set all four of the lower buttons to off.



**3 To end operation with the preference button, press**

the



- After approximate 15 minutes, the air blower, shoulder warmer or underwater lighting will turn off automatically.

To restart, please turn one of the



on.

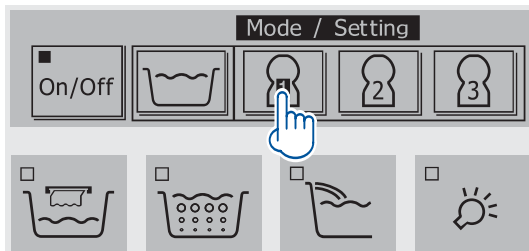
- The timer can be set for up to about 30 minutes. >>> P.25

## NEOREST Changing or deleting settings

**1 Put water in the AIRBATH™.** >>> P.16

**2 Press one of the three configured (numeral display colors reversed) preference buttons (1 ~ 3) and begin operation.**

※In this example, we press preference button 1.



※Please set the On/Off button to on.

※This won't work unless there is water in the AIRBATH™. Please have at least 8 inches (20 cm) of water in the AIRBATH™.

※When the preference button does not display, please set all four of the lower buttons to off.

**3 Operating the air blower, shoulder warmer or underwater lighting at your preferred settings.**

The three lower buttons are turned off when these settings are canceled.



▶ Operating the air blower >>> P.17

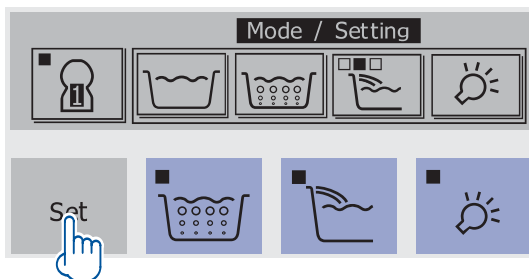
▶ Operating the shoulder warmer

>>> P.18

▶ Operating the underwater lighting

>>> P.19

**4 When you have configured your preferred settings, press the set button and the settings will be complete.**



▶ When the settings have been configured, the display colors of the numeral on the preference button will be reversed.



※Settings are stored.

**5 To end operation with the preference button, press the**



or

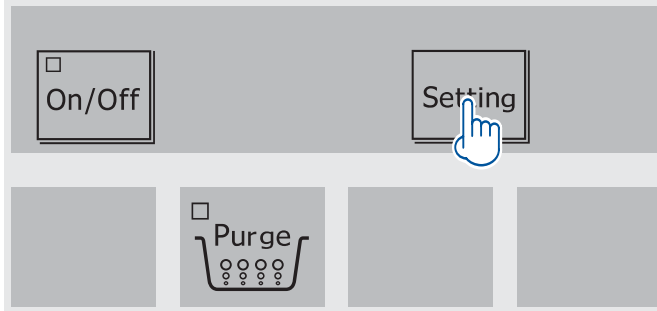


for operation.

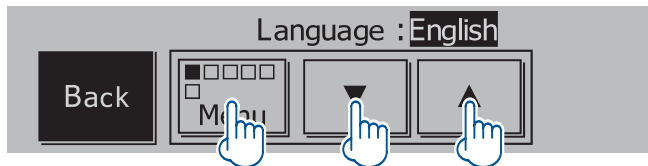
# Changing the settings

1 Set the On/Off button to off.

2 Press the setting button



3 Select the menu using the menu buttons and the up/down buttons to change the settings.

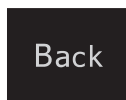


| Menu             | Settings  | Comments              |
|------------------|-----------|-----------------------|
| ■ □ □ □ □ □<br>□ | English   |                       |
|                  | 中文 ( 简体 ) | Chinese (simplified)  |
|                  | 中文 ( 繁體 ) | Chinese (traditional) |
|                  | ภาษาไทย   | Thai language *1      |
| □ ■ □ □ □ □<br>□ | 3         |                       |
|                  | 2         |                       |
|                  | 1         |                       |
| □ □ ■ □ □ □<br>□ | On        |                       |
|                  | Off       |                       |
| □ □ □ □ ■ □<br>□ | 5         |                       |
|                  | 4         |                       |
|                  | 3         |                       |
|                  | 2         |                       |
|                  | 1         |                       |
| □ □ □ □ ■ □<br>□ | 30min     | ※2                    |
|                  | 15min     |                       |
| □ □ □ □ □ □<br>■ | On        | ※3                    |
|                  | Off       |                       |

 : Blue outline = initial setting

- ※ 1 The voice guide is in English and part of the display is in English.
- ※ 2 Timer settings for the air blower, the shoulder warmer and the underwater lighting.
- ※ 3 Shoulder warmer warm-up operation settings.  
When starting shoulder warmer operation, cool water inside the shoulder warmer pipes will come out of the shoulder warmer outlet, so this function circulates bath water through the shoulder warmer pipes until the bath is entered. When starting with an empty AIRBATH™ (water level less than 6 inches (14 cm)) and the Fill-Tub button is pressed the shoulder warmer warm-up operation will begin automatically once the AIRBATH™ has filled up. The feature will operate until the shoulder warmer button is pressed. It will also stop automatically after about 60 minutes.

4 Press the



▶ The remote control will automatically go back after about one minute without operation.

# Care and cleaning

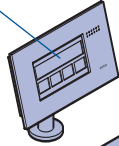
## Cleaning the various parts

### Cleaning the plated parts

To remove dirt and debris, please soak a soft cloth in warm or cold water and wring it well. When badly soiled, please use the same cleaning methods as for the AIRBATH™.



### Cleaning the controller >>> P.30



To remove dirt and debris (which will cause a crack in the water fall) use a thin plastic stick.

### Cleaning the lighting module >>> P.30

### Cleaning the AIRBATH™

Dirt gets harder to remove the longer it stays in one place. Cleaning the tub after bathing while the AIRBATH™ is still wet makes cleaning up easy. To keep your AIRBATH™ fresh and clean at all times, please be good about cleaning. After applying a bathtub detergent that says "Neutral" on the label with a sponge or cloth, wash, rinse with water within 5 minutes and then wipe dry.



### Cleaning the head rest >>> P.31

### Sanitizing the tub. >>> P.32

### Cleaning the intake port

If hair or residue blocks the intake ports, the shoulder warmer will have less force and won't function fully. It could also cause the pump to break down. Please clean it at least once a week.

※ Please do not remove the intake port. Hands, feet or hair might become drawn in, causing injury or drowning.

### Cleaning the air nozzle cap >>> P.29

※ After cleaning the AIRBATH™, please press the purge button on the controller and purge the AIRBATH™. >>> P.27

## Care and cleaning precautions

Please do not use the following sorts of detergent or tools when cleaning.

There is a chance that doing so could cause problems with the product or affect someone physically.

#### Detergents with "acidic" in the label.

These can discolor or stain the surface.

#### Detergents with "alkaline" in the label.

These can discolor or stain the surface.

#### Detergents containing "chlorine."

These can discolor or stain the surface. Also, they can corrode the plating on the plug and elsewhere.

#### Chemicals

These can discolor or stain the surface. Also, they can damage the drain and lead to leaks.

#### Solvents like paint thinner or acetone.

These can discolor or stain the surface. Also, they can damage the drain and lead to leaks.

#### Sponges with non-woven fabric, sponges with aluminum, sponges with netting, sponges containing polish, metal scrubbers, Nylon scrubbers

These can leave scratches and cause damage to the surface.

#### Cleansers and polishing powders

These can cause scratching.



Prohibited



Always do this

Rinse within five minutes of using a cleaning agent.

If detergent is left on the surface, the AIRBATH™ might discolor or develop cracks.

## Tips

### Metal soap

White residue may form on the AIRBATH™. This is called "metal soap" and once in place, it cannot be removed chemically. "Metal soap" forms in a reaction between the soap, the fats of the body and calcium or other metals in the water.

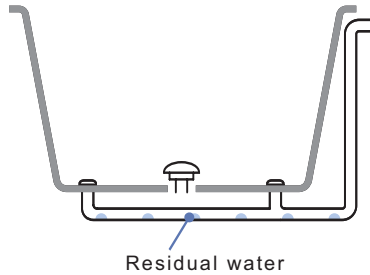
### Spontaneous rust

If red rust appears on the AIRBATH™, please remove it using tooth powder or other agent on a cloth. Red rust is not formed from the AIRBATH™, but from the trace amounts of iron found in tap water, well-water and around construction projects. It is called "spontaneous rust."

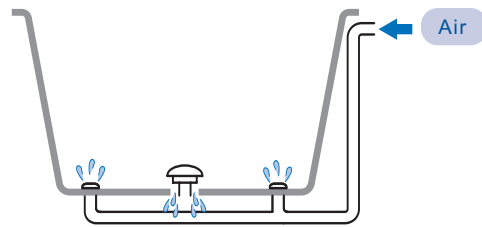
# Purging/draining the AIRBATH™

Please purge the AIRBATH™ after draining or cleaning it and remove residual water from inside the pipes. There are two types of purge operations: automatic and manual.

Even when the AIRBATH™ has been emptied, there may be some remaining water.



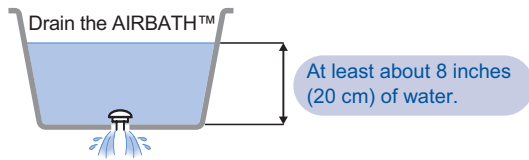
Purging the AIRBATH™ removes residual water from inside the pipes.



## Automatic purge operation

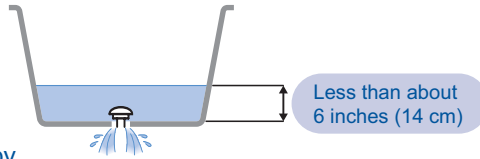
When there is at least 8 inches (20 cm) of water remaining in the AIRBATH™, the purge operation will take place automatically when the water is drained from the AIRBATH™.

**1** Set the On/Off button to off and open the drain plug.



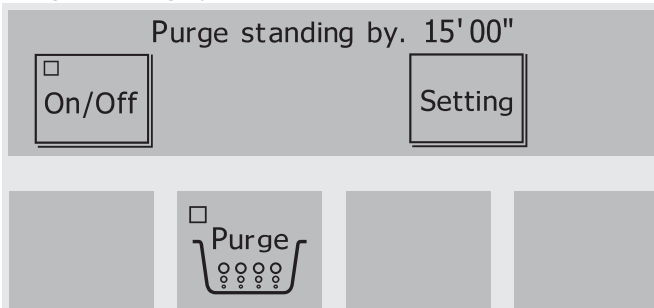
※ When there is not at least 8 inches (20 cm) of water standing in the tub, please run the purge operation manually. >>> P.28

**2** When the AIRBATH™ has been drained to less than about 6 inches (14 cm) of water, the purge operation will go into standby.



※ Set the On/Off button to off

Purge standing by

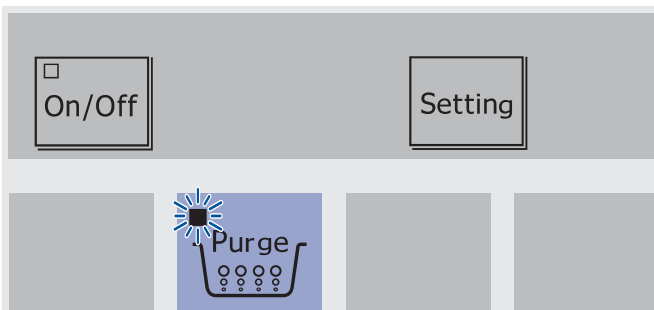


▶ When the On/Off button and setting configuration button are pressed, the standby time will revert to 15 minutes.

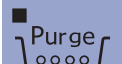
▶ Setting the Purge button to on will start the purge operation in Step 3

※ Please leave the drain plug open and empty the AIRBATH™.

**3** After fifteen minutes of standby, the system will automatically run the purge operation for two minutes.



※ Water will flow out of the shoulder warmer outlet from the pump during a purge operation because the circulation pump is also operating.

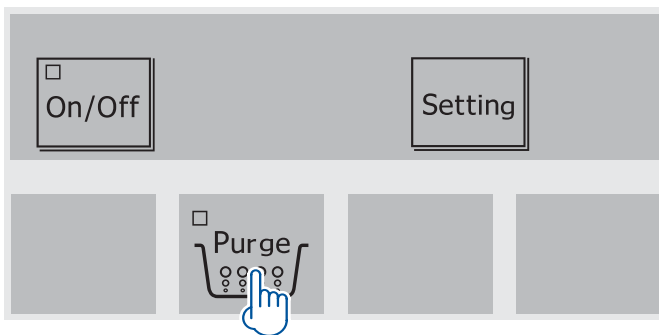
- The purge operation will end automatically after about two minutes.
- When you want to stop a purge operation, set the  to off.

## Manual purge operation

After cleaning the AIRBATH™ with the shower or when there is less than 8 inches (20 cm) of water remaining in the AIRBATH™, the purge operation is carried out manually.

1 Set the On/Off button to off, open the drain plug and empty the AIRBATH™.

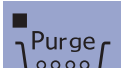
2 Set the Purge button to on.



※ Set the On/Off button to off.

※ Leave the drain plug open and run the operation for an empty AIRBATH™.

※ The circulation pump in the shoulder warming feature also runs when the draining feature is operating, so water in the pump will come out of the shoulder-warming outlet.

- The purge operation will end automatically after around two minutes.
- When you want to stop the purge operation early, set the  to off.

# Air nozzle cap

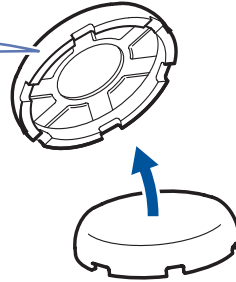
When residue blocks the air nozzle cap, the air blower will have less power and will not be able to function sufficiently.

If you find that the air blower has less power, please clean it.

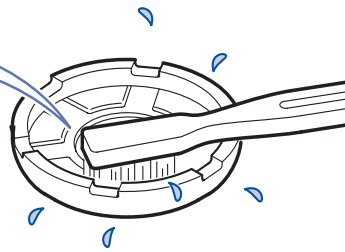
**1** Drain all of the water out of the AIRBATH™.

**2** Remove the air nozzle cap

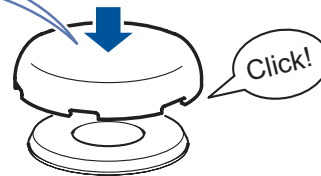
※Please use a smooth plastic tool or similar object to remove the air nozzle cap. (Using your finger to remove it could hurt your finger or fingernail.)



**3** Remove any debris or residue on the back.



**4** Return the air nozzle cap to where it was.



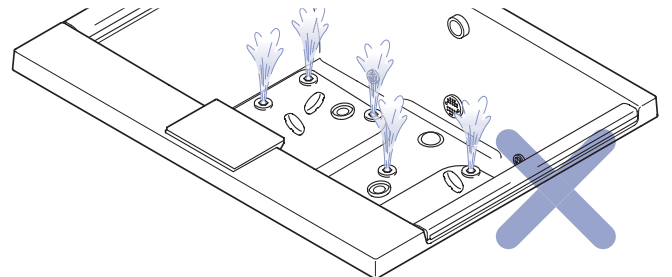
## Caution



Prohibited

Do not operate the AIRBATH™ with the air nozzle caps removed. Operation of the AIRBATH™ when it is empty will cause water remaining in the pipes to shoot upward and could be dangerous if it gets in the eyes or mouth.

Please keep the air nozzle caps properly attached during operation.



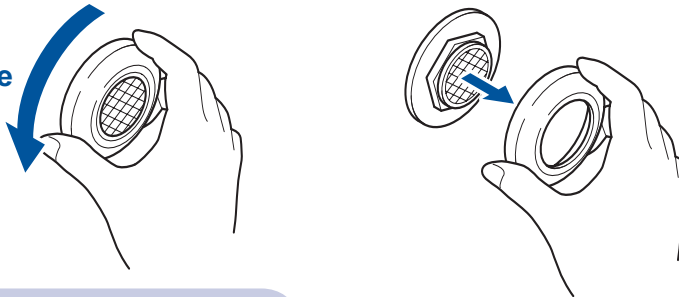
# Lighting Modules

Normally, you need only wipe the dirt away with a dry cloth.  
If they are badly soiled, use a suitable amount of diluted, neutral detergent on a cloth or sponge to wipe them clean.

## Cleaning the lighting module covers

When the space between the lighting module covers and the AIRBATH™ is badly soiled, remove the cover with your hand and use a suitable amount of diluted, neutral detergent on a cloth or sponge to wipe it clean.

Turn counterclockwise



※ To reattach them, please follow the process in reverse.

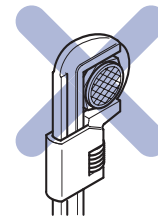
## Caution



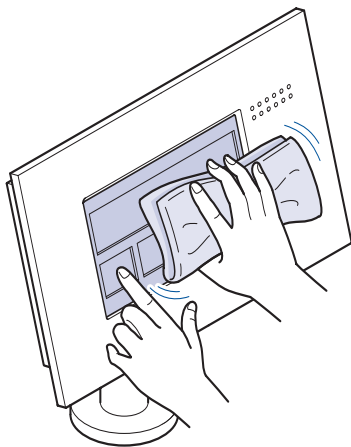
Prohibited

Do not use any tools when removing the lighting module covers.  
It might cause damage or leaks.

Never remove any parts other than the lighting module covers.  
It might cause leaks.



# Controller



- ✦ Please use a soft, slightly damp cloth to wipe the unit.
- ✦ If it is badly soiled, use a suitable amount of diluted, neutral detergent on a cloth or sponge to wipe it clean.
- ✦ When cleaning, if the buttons react, please press on one button and wipe the other sections. The buttons are designed not to react when two or more are pressed.

※ The product is made of plastic, so please do not wipe it with a dry cloth or sponge. Doing so could cause scratches.

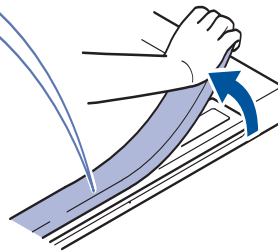
# Head rest

Clean the head rest twice a month or more, depending upon usage. Use mild soap and water on a clean, soft cloth for routine cleaning. To clean stubborn stains, remove the head rest and the base plate.

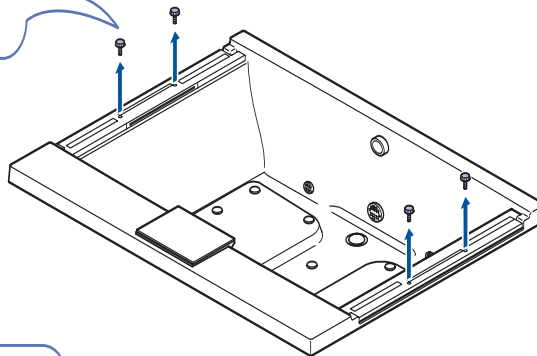
After removal, clean each of the parts and the shoulder warmer outlet as well.

When badly soiled, put some high-quality cleaner recommended for vinyl on a soft cloth or sponge, wash the area, rinse with water within five minutes and then buff dry.

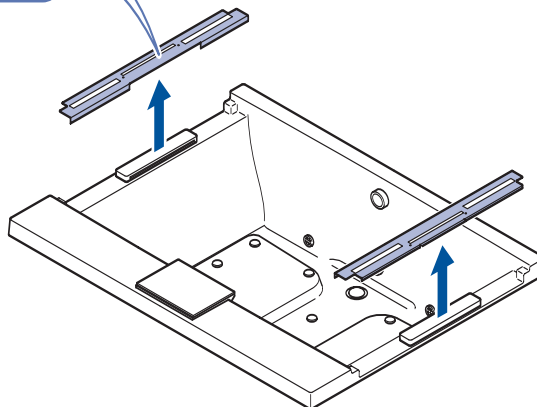
1 Remove the head rest.



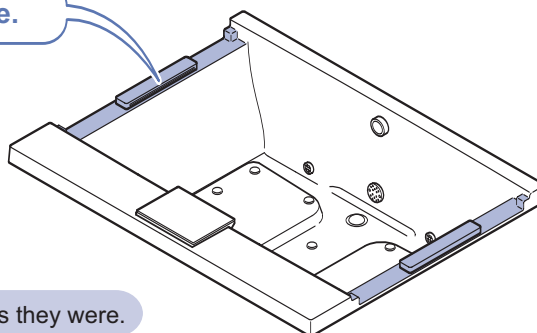
2 Remove the two screws holding the base plate.



3 Remove the base plate



4 Clean here.



※After cleaning, please reattach the pieces as they were.



# Sanitizing the tub

Flush your system at least once a month. Use the following sequence.

Fill the bath with warm water just above the intake port or leave water in the bath after using.

Add 10 ounces (296 ml) of household bleach (5% - 6% sodium hypochlorite) to the water.

Run the air bath for 5 to 10 minutes. Turn off the air bath and drain.

Rinse the bath surfaces with water (from the shower).

Rinse the surfaces of the jets, filler, overflow cover, drain, etc. and wipe dry with a soft cloth.

# Function module

## Outside enclosure

Please wipe dirt off of the function module enclosure with a damp cloth and then buff dry. When badly soiled, please use a neutral detergent.

## Supplementary Protector

Please check the function of the Supplementary Protector two to three times a year. You risk electric shock if you use the AIRBATH™ while the Supplementary Protector is broken,

- 1 Check to see that power is being supplied.**  
※It is if you can operate the controller.
- 2 Remove the Supplementary Protector cover.**
- 3 Push the test button on the Supplementary Protector**  
※ It is functioning normally if the power lever goes from on to off.
- 4 After the inspection, turn the power supply lever back on.**
- 5 Reattach the Supplementary Protector cover as it was.**

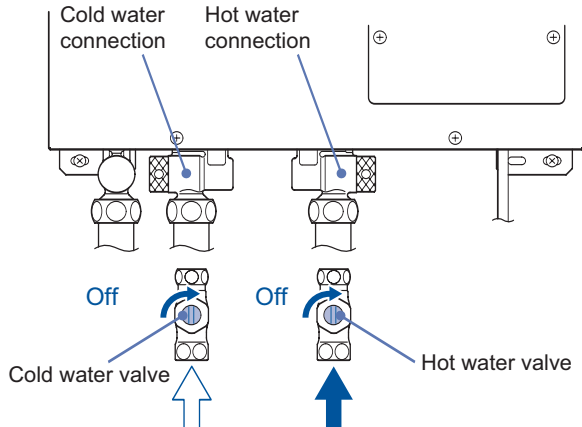
## Water drain lug (with strainer)

When debris and other things block the strainers in the water drain plugs, the following will happen, so please keep them clean.

- The volume of water flowing out will fall and it will take a long time to fill the AIRBATH™.
- The water will not flow out like a waterfall.
- The temperature of the water will be unsatisfactory.


※After hot water has been run into the air tub from the fill-tub spout, the water remaining in the function module will be very hot. To prevent scalds, please wait until after the equipment has cooled.  
 ※Since hot and cold water will come out of the water drain valve, please place a bucket or other container below the function module to catch any water.

- 1 Turn off the hot and cold water shut-off valves connected to the connecting port.**



※The positioning of the shut-off valves will vary by site.

2

Set the  on the controller to on and wait for about 20 seconds.

※ Please operate with the On/Off button set to on.

3

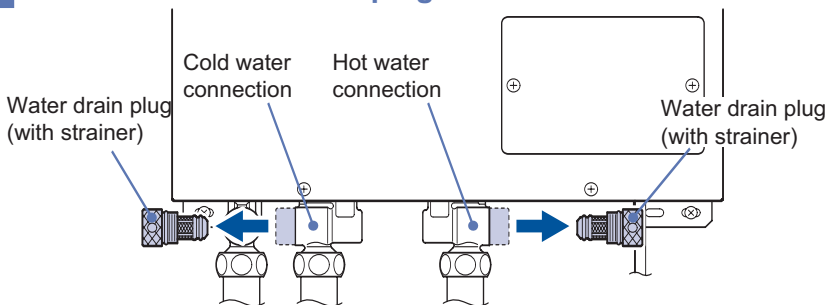
Check to see that water is not flowing from the Fill-Tub outlet and then set the On/Off button to off.

▶ If the water continues to flow, set the On/Off button to off once again and then start at Step 1

▶ Occasionally, the controller will display error code 572. This is a water shut-off notice. After resetting the error >>> P.37, please set the On/Off button to off and proceed to Step 4

4

Remove the water drain plugs.

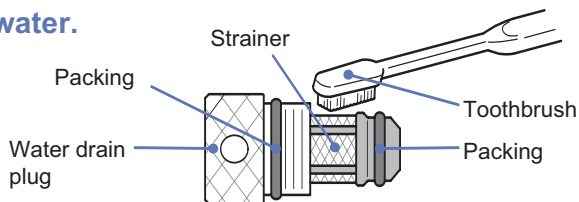


※ Please be aware that water in the function module will flow out when removing the water drain plugs.

※ If you are unable to turn the water drain plugs and remove them manually, please insert a screwdriver or similar tool into the hole in the water drain plug and turn it with the tool.

5

Use a toothbrush or similar tool to rinse the strainer with water.



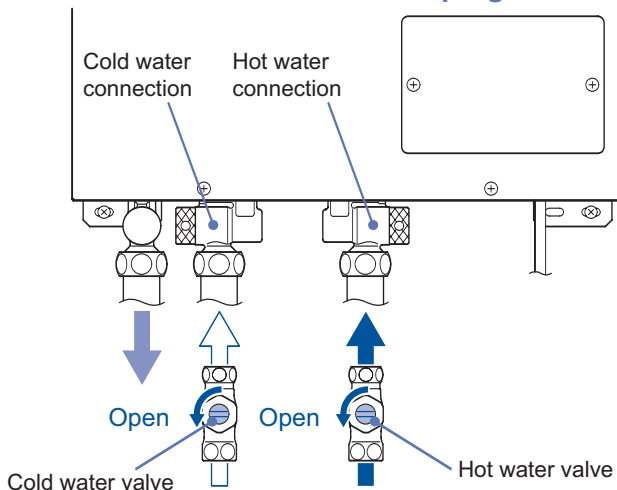
※ Please keep from scratching or letting debris get on the packing. Otherwise, leaks could develop or debris could get inside the function module and cause problems.

6

Reattach the water drain plugs to the hot and cold water connections as they were.

7

Turn on the hot and cold water drain plugs and check to see that no water leaks from around the plugs.



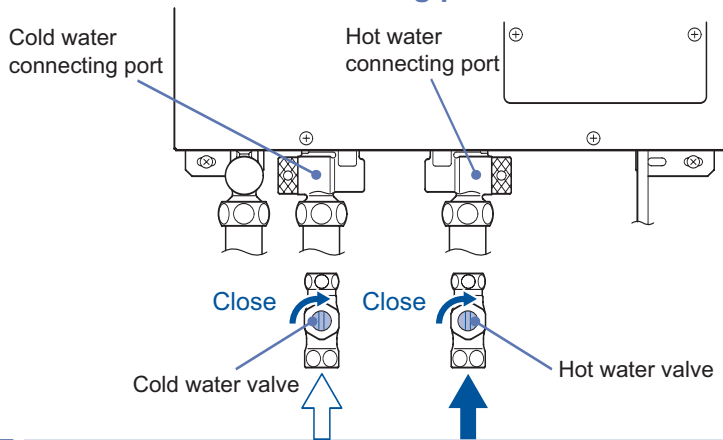
# Long periods of disuse


When the product will not be used for a long period of time, remove the water from the function module and shut off the power.

- ※After the water flows out of the Fill-Tub, the water in the function module will be quite hot. In order to prevent scalding, please wait until the equipment has cooled off.
- ※Hot and cold water will flow out of the water drain plugs, so please place a bucket or other container below the function module to catch the water.

**Preparation:** Drain the water out of the AIRBATH™ and empty it.

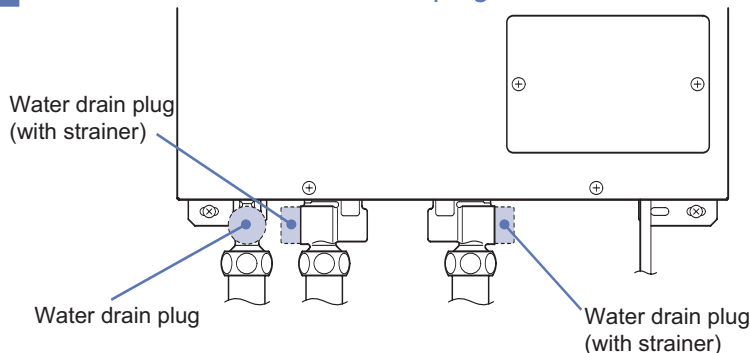
**1** Turn of the hot and cold shut-off valves of the pipes connected to the connecting ports.



**2** Set the  on the controller to on and wait for about 20 seconds.

**3** Check to see that water is not flowing from the Fill-Tub outlet and then set the On/Off button to off.

**4** Remove the three water drain plugs



※Please leave the water drain open.

※The positioning of the shut-off valves will vary by site.

※Please operate with the On/Off button set to on.

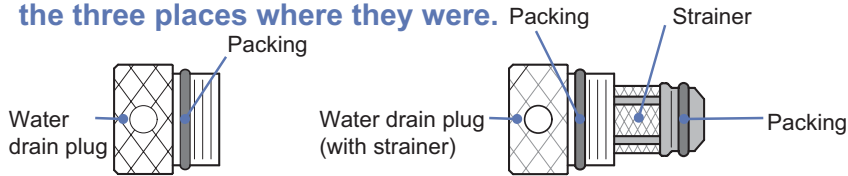
▶ If the water continues to flow, set the On/Off button to off once again and then start at Step 1

▶ Occasionally, the controller will display error code 572. This is a water shut-off notice. After resetting the error >>> P.37, please set the On/Off button to off and proceed to Step 4


※Please be aware that water in the function module will flow out when removing the water drain plugs.

※If you are unable to turn the water drain plugs and remove them manually, please insert a screwdriver or similar tool into the hole in the water drain plug and turn it with the tool.

**5** After removing the water, reattach the water drain plugs to the three places where they were.

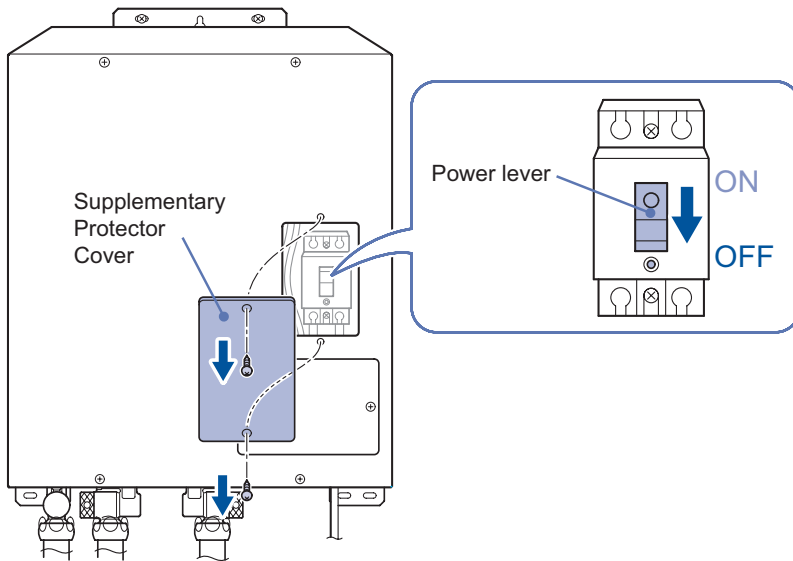


- ※ Please keep from scratching or letting debris get on the packing. Otherwise, leaks could develop or debris could get inside the function module and cause problems.
- ※ Please attach the water drain lug without a strainer to the connection port on the far left.

**6** Turn the  on the controller to on and wait until the water draining operation ends.

- ※ Please run this with the On/Off button set to off.
- ※ After around two minutes, the water draining operation will end.

**7** Remove the cover from the Supplementary Protector on the function module and turn the power lever on the Supplementary Protector to off.



**8** Reattach the Supplementary Protector cover as it was.

**9** Turn off the circuit breaker.

※ For the shower used to clean the AIRBATH™, please open the inspection door, which is located near the shower (built on site) and turn off the water shut-off valves.

※ Please follow the procedure in "Before using it for the first time". ( >>> P.11 ) when you want to use it again.

# When you think something might be wrong

Please read this before requesting any repairs.

If you still have a problem, or if there are no applicable categories, please request repairs.

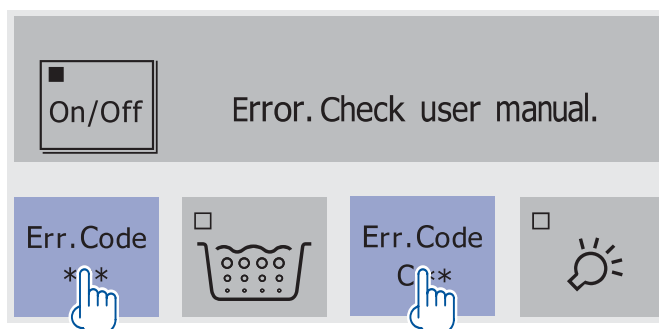
## NEOREST When error codes are displayed.



| Error Code | Cause                                 | Procedure  |
|------------|---------------------------------------|--|
| 032        | Open AIRBATH™ drain                   | <ul style="list-style-type: none"> <li>* Is the AIRBATH™ drain closed?</li> <li>* Empty the tub, push the purge button and operate the drain. Then re-try filling.</li> </ul>  |
| 079        | No hot water                          | <ul style="list-style-type: none"> <li>* Is there enough hot water coming from the water heater?</li> <li>• Please check the temperature and operating settings on the water heater.</li> </ul>  |
| 152        | Abnormal incoming water temperature   | <ul style="list-style-type: none"> <li>* Is hot water being supplied to the function module's cold water connection?</li> <li>• Please check the plumbing connections to the water heater.</li> <li>• It could be that high-temperature hot water is flowing through, so please stop using the equipment.</li> </ul> |
| 165        | Unusual temperature when filling      | <ul style="list-style-type: none"> <li>* Are the main valve and stop valve open?</li> <li>* Is the strainer of the water connection clean? Please clean.</li> <li>* Is there ample water supply pressure?</li> </ul>   |
| 572        | No water                              | <ul style="list-style-type: none"> <li>* Is the water main or shut off valve turned off?</li> <li>* Has the water company turned off the water?</li> <li>* Could the plumbing be frozen?</li> </ul>  |
| C04        | Abnormal rpm in shoulder warming pump | <ul style="list-style-type: none"> <li>* Is there enough water in the AIRBATH™?</li> <li>* Is there any debris trapped in the intake port?</li> <li>• Please clean it out.</li> <li>* Is an intake port blocked?</li> </ul>  |
| Other      | —                                     | Please try it again, after resetting the error.  |

## NEOREST Error reset methods

You can reset errors by pressing the button that has displayed an error code.



## NEOREST Shower

### The water won't turn off.

- Are the hot and cold water knobs turned completely off?
- Water dripping from the shower can be from residual water flowing inside the shower head. It is not broken.

### The hot/cold water doesn't work. There isn't enough flow.

- Are the water main and the shut off valves turned on far enough?
- Are the knobs turned on far enough?
- Has the water been shut off or could it be frozen?

### The water's always cold.

- Does the water heater produce enough hot water? → Please check the temperature and operating settings on the water heater.
- Is the hot water knob turned on?

### The water's always hot.

- Is the cold water knob turned on?

## NEOREST Filling the AIRBATH™

### There isn't enough water flowing out.

- Is there debris trapped in the strainers in the hot or cold water connections in the function module? → Please clean them. >>> P. 33
- Is there enough hot water from the water heater?
  - Please check the temperature and operating settings on the water heater.
  - Please set the hot water supply temperature to 140 ~ 158°F (60 ~ 70°C).
- Are the water main and the shut-off valves turned on?
- Is there water pressure? >>> P. 12

### The water is luke warm.

- Is the temperature setting on the controller low? → Please increase the setting. >>> P. 16
- Is it adding cold water?
- Is there enough hot water coming from the water heater?
  - Please check the temperature and operating settings on the water heater.
  - Please set the hot water supply temperature to 140 ~ 158°F (60 ~ 70°C).
- Is there debris trapped in the strainers in the hot water connections in the function module? → Please clean them. >>> P. 33
- Is there water pressure? >>> P. 12

### The water is too hot.

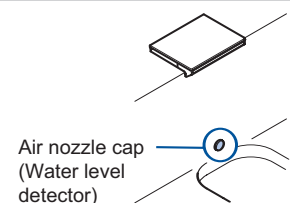
- Is the Fill-Tub temperature setting too high? → Please lower the setting. >>> P. 16
- Is it adding hot water? → Hot water is added at 118.5°F (48°C).
- Is there debris trapped in the strainers in the cold water connections in the function module? → Please clean them. >>> P. 33
- Is there water pressure? >>> P. 12

### It stops filling.

- It stops filling automatically when it has filled the AIRBATH™ with around 26 gallons (100 L) or reached the set water level. >>> P. 22

### The water level varies.

- When the AIRBATH™ is filled and there is already water in the AIRBATH™, the water level will vary by the amount of water that was in the AIRBATH™. >>> P. 22
- Please empty the AIRBATH™ and then drain all of the water out using the purge button. Please try refilling the AIRBATH™ after that.
- Is there debris or residue trapped in the air nozzle caps (for water level detection) on the inside surface of the AIRBATH™?
  - Please clean them out referring to the cleaning method for air nozzle caps. >>> P. 29



## NEOREST Adding cooling water

### I can't add cooling water.

- Is the fill AIRBATH™ button set to on? → Cooling water cannot be added while filling the AIRBATH™.
- Is the water level in the AIRBATH™ low? → It won't work if the water level is low. Please fill the AIRBATH™ to at least 8 inches (20 cm).

### This feature shuts off on its own.

- It stops automatically after approximately 26 gallons (100 L) have flowed out. >>> P. 20

## NEOREST Adding warming water

### I can't add warming water.

- Did you press the button for at least 1 second? → As a safety feature, the button must be pressed for at least 1 second. Please press the button for at least 1 second.
- Is the fill-AIRBATH™ button set to on? → Heating water cannot be added while filling the AIRBATH™.
- Is the water level in the AIRBATH™ low? → It won't work if the water level is low. Please fill the AIRBATH™ to at least 8 inches (20 cm).

### The water is luke warm.

- Is there enough hot water coming from the water heater?
  - Please check the temperature and operating settings on the water heater.
  - Please set the hot water supply temperature to 140 ~ 158°F (60 ~ 70°C).
  - Because the function module blends the incoming hot and cold water, the temperature of the water flowing out is lower than that of the hot water supply. Example: When the temperature of the hot water to the function module is 118.5°F (48°C), the temperature of the water that flows out will be less than 118.5°F (48°C).
- Is there debris trapped in the strainers in the hot or cold water connections in the function module? → Please clean them. >>> P. 33
- Is there water pressure? >>> P. 12

### This feature shuts off on its own.

- It stops automatically after approximately 26 gallons (100 L) have flowed out. >>> P. 21

## NEOREST Air blower

### I can't add warming water.

- Is there debris or residue trapped in the air nozzle caps → Please clean the air nozzle caps. >>> P. 29
- One of the air nozzle caps on the side (not the bottom) of the AIRBATH™ is for detecting the water level. It doesn't produce air bubbles.
- A safety device will turn off the air pump when the temperature rises. Please wait for a while and try again.

### This feature shuts off on its own.

- It stops automatically after the time on the time has elapsed. >>> P. 17

### This feature starts up on its own.

- Is the automatic draining operation running to drain the AIRBATH™? >>> P. 27

### Cold water or air bubbles come out of the caps.

- Right after the feature starts, cold water that had been in the pipes might come out.
- The air bubbles near the air nozzle caps on the bottom of the AIRBATH™ feel cool. Please adjust your bathing position.

### The water in the AIRBATH™ goes cold too soon.

- When using the air blower, the water in the AIRBATH™ tends to cool off quickly.

### There is debris or residue around the air nozzle caps.

- It is not broken. The blower has spread debris or residue from the air nozzle caps. → It needs to be cleaned. >>> P. 29



## NEOREST AIRBATH™ draining feature

### The automatic AIRBATH™ draining feature doesn't work, even when I let the water out of the AIRBATH™.

- Is the water level at least 8 inches (20 cm) when draining the AIRBATH™?  
→ When the AIRBATH™ is drained and the water level is low, the automatic AIRBATH™ draining feature won't work. Please press the purge button to drain the AIRBATH™.
- Is the On/Off button set to off? → The automatic draining feature won't work if it is on. Please set it to off.
- Please run the AIRBATH™ draining feature with the purge button after the AIRBATH™ is empty,  
→ Please check the automatic AIRBATH™ draining feature the next time you drain the AIRBATH™.

### Water comes out of the shoulder warming outlet when draining the AIRBATH™.

- The circulation pump in the shoulder warming feature also runs when the draining feature is operating, so water in the pump will come out of the shoulder-warming outlet.

## NEOREST Shoulder-warming feature

### It doesn't work.

- Is the water level in the AIRBATH™ low? → It won't work if the water level is low. Please keep at least 8 inches (20 cm) of water in the AIRBATH™.

### This feature shuts off on its own.

- It shuts off automatically when the time on the timer has elapsed. >>> P. 18
- Operation may stop when the water level is low. → Please add water and increase the water level in the AIRBATH™.

### When filling the AIRBATH™, the shoulder-warming feature turns itself on.

- Is the shoulder-warming warm-up feature set to on? >>> P. 25

### The display for the shoulder-warming feature went out.

- When interference or noise keeps the detector from sensing the water level in the AIRBATH™, the button display may go out. → Please wait for a while.

### There isn't much water flow volume.

- Is the intake port blocked? → Please clean it. >>> P. 26
- Has the operation mode been changed? → Please check the operation mode. >>> P. 18

## NEOREST Underwater lighting

### This feature turns itself off.

- It shuts off automatically when the time on the timer has elapsed. >>> P. 19

## NEOREST Controller

### The lights on the controller don't work.

- Is the circuit breaker for the power supply turned off?
- Has there been a power outage?
- Is the circuit breaker inside the function module turned off? >>> P. 11
- Have the display lights been turned off? >>> P. 2 → Pressing the buttons will turn the lights on.

### There seem to be black holes in the button display modules.

- This is not abnormal. They are the button sensors.

**The display or backlighting have streaks of color or flash.**

- This is not abnormal.
  - There may be times when the color streaks or flashes.
  - When sound comes out of the speaker, the backlighting may flash.

**There is background noise when the voice guide or sound is on.**

- This is not abnormal. → When noise is a problem, please turn down the volume or shut off the voice guide. >>> P. 25

**The screen display or backlighting went out at some point.**

- Has the screen been turned off? >>> P. 2 → It will go on when the buttons are pressed.

**The buttons won't work.**

- Please refer to button pressing methods. >>> P. 1
- Are you pressing them slowly or adding too much force after you touch them?
  - Press the buttons lightly in the center to make them work.
- Are you pressing the button along the edge or in a corner? → Please press near the little raised symbol.
- If you press more than one button at a time, they won't respond.
  - For example, when you are pushing a button with your index finger and your little finger is near another button, the button might not respond.
- Are you leaving your finger down, pressing the buttons continuously?
  - Please lift your finger off of the button for a moment, even if are pressing the same button more than once.
- The buttons may not respond if you are wearing gloves.
- Is there dirt or debris on the button? Is there something nearby, a towel for example that is interfering with the operation?
  - Please clean the buttons.
  - When the buttons won't work even after moving objects out of the way, Please wait about two minutes before trying again.
- Is there too much surrounding light, such as direct sunlight?
  - The buttons sometimes won't operate in direct sunlight or near incandescent lights (20 inches (50 cm) or so).
  - Please change the angle of the controller or darken the room.
- Please turn the circuit breaker in the function module off once, back on and then try again.

**I can't operate the preference buttons.**

- Is the water level in the AIRBATH™ low? → The product won't run if the water level is low. Please keep at least 8 inches (20 cm) of water in the AIRBATH™.

**The preference buttons won't display.**

- Is equipment (like the air blower or underwater lighting) running?
  - The preference buttons won't display while the equipment is running. Please turn off the equipment.
- When interference or noise keeps the detector from sensing the water level in the AIRBATH™, but button display may go out. → Please wait for a while.

# Specifications

|   |                              |   |  |  |
|---|------------------------------|---|--|--|
| <b>AIRBATH™</b>                               | Dimensions x 1               |   | 70 7/8" x 55 1/2" x 28 1/2" (1800 mm W, 1410 mm D, 725 mm H)                         |  |
|   | Weight                       |   | 353 lbs. (160 kg)  |  |
|   | Capacity                     |   | 161 Gallons (610 L) to overflow line   |  |
|   | Material                     |   | Acrylic synthetic marble   |  |
|   | AIRBATH™ filling             | Outflow ports   | One  |  |
|   |                              | AIRBATH™ filling flow rate  | Max. 9.1 gal/min (35 L/min) (controlled by function module)                          |  |
|   | Air blower                   | Number of blowers   | 15 on the bottom of the AIRBATH™   |  |
|   |                              | Volume of air   | Max 153 gal/min (580 L/min) (15 Total, controlled by the function module)            |  |
|   | Shoulder warmer (cascade)    | Intake ports  | One  |  |
|   |                              | Outflow ports   | Two  |  |
|   |                              | Flow rate   | Max 10 gal/min (38L/min) (2 Total, controlled by the function module)                |  |
|   | Underwater lighting          | Lighting modules  | Two  |  |
|   |                              | Colors  | Three pattern types, 10 individual colors (controlled by the function module)        |  |
|   | Shower (Two knobs)           | Uses  | Cleaning the AIRBATH™  |  |
|   |                              | Water pressure  | 11.6 ~ 108.75 psi (0.08 ~ 0.75 MPa)  |  |
|   |                              | Inlet water temperature   | Hot  | Please confirm local code (below 158°F (70°C)) |
| Cold  |                              |   | 32 ~ 86°F (0 ~ 30°C) (No freezing)   |  |
| Connecting diameter, threads                  |                              | Hot   | NPT 1/2  |  |
|   | Cold                         | NPT 1/2   |  |  |
| AIRBATH™ filling connection diameter, threads |                              |   | NPT 3/4  |  |
| <b>Controller stand</b>                       | Dimensions                   |   | 9 5/8" x 4 1/2" x 10" (246 mm W, 113 mm D, 255 mm H)                                 |  |
|   | Weight                       |   | 6.2 lbs. (2.8 kg) (including the controller)   |  |
|   | Adjustable arc.              |   | 90°  |  |
| <b>Function module</b>                        | Dimensions x 2               |   | 16 5/8" x 7 1/8" x 18 3/4" (422 mm W, 180 mm D, 476 mm H)                            |  |
|   | Weight                       |   | 37.5 lbs. (17 kg)  |  |
|   | Rated voltage                |   | 120 VAC  |  |
|   | Rated frequency              |   | 60 Hz  |  |
|   | Rated current                |   | 5.9A   |  |
|   | Horse power                  |   | 1/6 HP   |  |
|   | Rated power consumption      |   | 710W   |  |
|   | Standby power consumption    |   | 5.6W   |  |
|   | Installation locations       |   | Indoors (Function module only, locations without condensation, dampness or freezing) |  |
|   | Water pressure               |   | 29 ~ 108.75 psi (0.20 ~ 0.75 MPa)  |  |
|   | Inlet water temperature      | Hot   | 140 ~ 158°F (60 ~ 70°C)  |  |
|   |                              | Cold  | 32 ~ 86°F (0 ~ 30°C) (No freezing)   |  |
|   | Connection diameter, threads | Hot   | NPT 3/4  |  |
|   |                              | Cold  | NPT 3/4  |  |
| Fill AIRBATH™                                 |                              | NPT 3/4   |  |  |
| Safety device                                 |                              | Continuous operation prevention device, overcurrent protection device, ground-fault circuit interrupter (GFCI). |  |  |

※ 1: The height of the AIRBATH™ includes the frame that supports the AIRBATH™.  
 ※ 2: The function modules external height excludes the connection ports.

# MEMO

# Limited Warranty

## Five Year Limited Warranty – Acrylic Shell

## One Year Limited Warranty – Parts and Components

1. TOTO® USA, Inc (TOTO®) warrants its Acrylic Bathtub (excluding components) to be free from manufacturing defects under normal use and service for a period of Five (5) Years from the date of purchase. This warranty is extended only to be ORIGINAL PURCHASER.

TOTO® USA, Inc (TOTO®) warrants the Air Bath component parts, which include all components of the Acrylic Bathtub other than the acrylic shell, to be free from manufacturing defects under normal use and service for a period of One (1) Year from the date of purchase. This warranty is extended only to the ORIGINAL PURCHASER.

TOTO's® obligations under this warranty are limited to repair or replacement, at TOTO's® option, of products or parts found to be defective, provided that such products were properly installed and used in accordance with all safety, use and installation instructions published by TOTO®. **FAILURE TO FOLLOW ANY OF THOSE INSTRUCTIONS WILL VOID THE WARRANTY.** This warranty does not cover normal wear or tear, which includes, but is not limited to, scratching, gloss reduction, staining or alkaline etching of the finish over time.

**Warning!** TOTO® shall not be responsible or liable for any failure of or damage to, this plumbing product or product components caused by either chloramines in the treatment of public water supply or cleaners containing chlorine (calcium hypochlorite). The use of a high concentrate of chlorine or chlorine related products can seriously damage the water tight seals. This damage can cause leakage and serious property damage. Use of chlorine or chlorine related products will void the warranty.

2. In addition to the foregoing, this warranty does not apply to the following:
  - a. Damage or loss sustained in a natural calamity such as fire, earthquake, flood, thunder and/or electrical storm, etc.
  - b. Damage or loss resulting from any unreasonable use, misuse, abuse, negligence, or improper maintenance of the product.
  - c. Damage or loss from disassembly, removal, improper repair, or modification of the product.
  - d. Damage or loss resulting from sediments or foreign matter contained in a water system.
  - e. Damage or loss resulting from improper installation or from installation of the product in a harsh and/or hazardous environment.
  - g. Damage or loss resulting from use of bleach or alkali or acid cleaners or dry (powder) cleaner or any cleaner that has abrasives.
  - h. Damage or loss resulting from use of nylon or metal scrubbers to clean the tub.
  - i. Damage or loss resulting from failure to use factory equipped cord and plug or use of a loose or faulty electrical outlet or use of a current or socket other than a 120V, 60Hz electrical current from a GFI (ground, fused) socket.
3. This warranty applies only to the tub and the tub components. This warranty applies only to TOTO® products purchased and installed in the United States and Canada. TOTO® reserves the right to make such inspections as may be necessary in order to determine the cause of the defect. TOTO® will not charge for labor or parts in connection with warranty repairs or replacements. TOTO® is not responsible for the cost of removal, return and/or reinstallation of products.
4. To obtain warranty repair service under this warranty, you must take the defective product or deliver it prepaid (shipping and handling) to an authorized TOTO® USA, INC service center. To find the closest authorized dealer, please call 1-800-350-TOTO (8686). If the tub is already installed, call TOTO® Tech Support at 888-295-8134.
5. In order for this limited warranty to be valid, TOTO® USA, INC. must receive the completed attached warranty registration card and your proof of purchase within 30 days of the original purchase date.
6. If the danger label which has been placed over the seams on the back of the product's blower motor is broken or otherwise not intact, this limited warranty is void.

This written warranty is the only warranty made by TOTO®. Repair or replacement as provided under this warranty shall be the exclusive remedy available to the purchaser. TOTO® shall not be responsible for loss of the product or for other incidental, special or consequential damages or expenses incurred by the purchaser, or for labor or other costs due to installation or removal, or costs of repairs by others, or for any other expense not specifically stated above. TO THE EXTENT PERMITTED BY LAW, TOTO® DISCLAIMS ALL OTHER IMPLIED WARRANTIES INCLUDING THAT OF MERCHANTABILITY AND FITNESS FOR A PARTICULAR PURPOSE. TOTO® ALSO DISCLAIMS ANY LIABILITY FOR SPECIAL, INCIDENTAL, OR CONSEQUENTIAL DAMAGES. Some states do not allow limitation of how long an implied warranty lasts or the exclusion or limitation of special, incidental or consequential damages, so these limitations and exclusions may not apply to you. This warranty gives the consumer specific legal rights. You may also have other rights that vary from state to state. This warranty is to the original purchaser only, and excludes product damage due to installation error, product abuse, or product misuse, whether performed by a contractor, service company, or the consumer.

THIS IS OUR EXCLUSIVE WRITTEN WARRANTY.



TOTO USA INC. 1155 Southern Road, Morrow, GA 30260  
Tel : (888) 295-8134 • Fax : (800)699-4889  
[www.totousa.com](http://www.totousa.com)  
Printed in USA © TOTO USA Inc.

0GU5073  
11-12-07