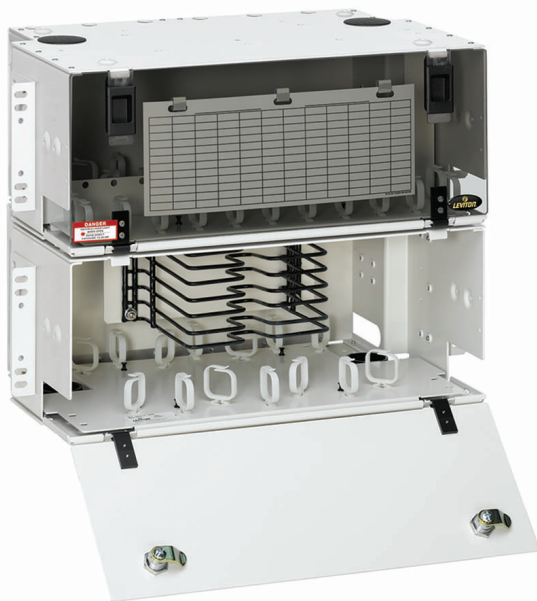


LightSpace® DPC Series Optical Distribution & Splice Enclosure

APPLICATION

Leviton LightSpace DPC Series Optical Distribution and Splice Enclosures are designed to protect, manage, and organize fiber terminations and splices in a rack-mount environment. LGX® compatibility allows users to fill and expand legacy systems. Enclosures may be combined to provide splicing and termination in a single, factory-assembled unit. Enclosures are available with pre-loaded pigtail and splice trays for fast and simple setup.



SPECIFICATION

Optical distribution and splice enclosures shall protect, manage, and organize fiber terminations and splices in a rack-mount environment. Units shall be LGX compatible and support legacy systems. Units shall be available in sizes large enough to support up to twelve 12-pack panels. Units shall be available with adapters, pigtails, or pre-connectorized cable stubs. Splices and terminations shall be housed in separate sections of the enclosure.

FEATURES

- Accepts Leviton standard 12 pack (DPC-105) adapter plates
- Accepts LGX compatible 6- or 8-pack adapter plates
- Accepts Leviton standard splice trays
- 19-inch and 23-inch rack mounting
- Removable hinged front doors and hinged rear door
- Flip card for connector identification
- Large cable management rings for enhanced jumper routing
- Metal door and key lock options for increased security
- Pigtails routed internally for maximum protection
- Cable clamp kits for additional cable strain relief
- Grounding kit available

DESIGN CONSIDERATIONS

- Used to protect, manage, and organize fiber terminations and splices in a rack-mount environment
- Constructed of high-strength aluminum
- LGX compatible

STANDARDS COMPLIANCE

NEBS GR-63

PHYSICAL SPECIFICATIONS

Dimensions: See page two

COUNTRY OF ORIGIN

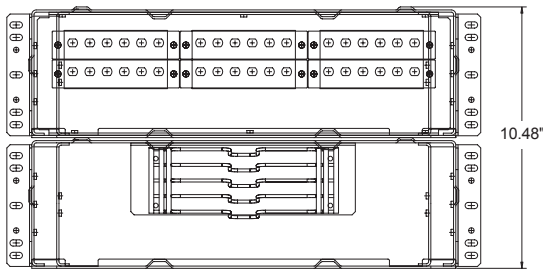
USA

WARRANTY INFORMATION

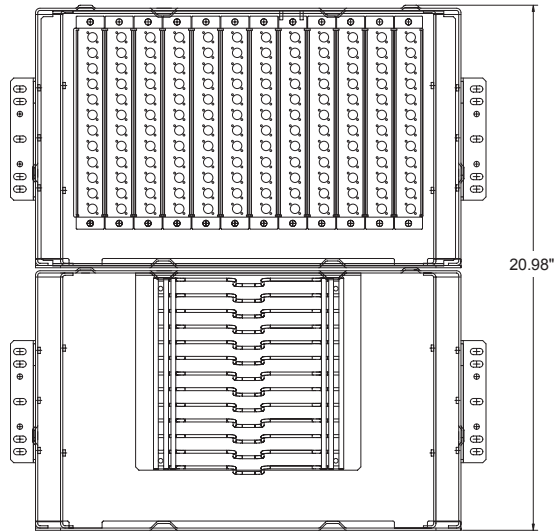
For a copy of Leviton product warranties, visit www.leviton.com/warranty.

ELECTRONIC FILES

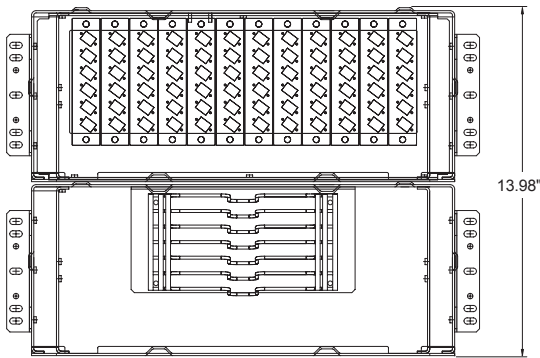
For CAD files, typical specs, or technical drawings (.DXF, .DWG), visit www.leviton.com.



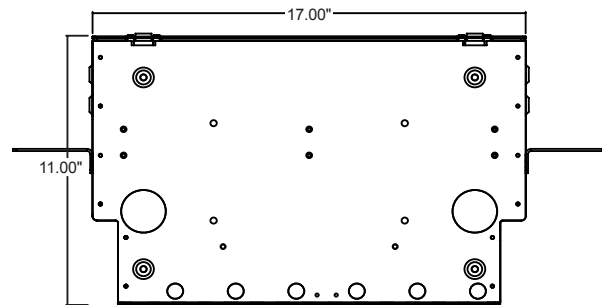
DPC-525



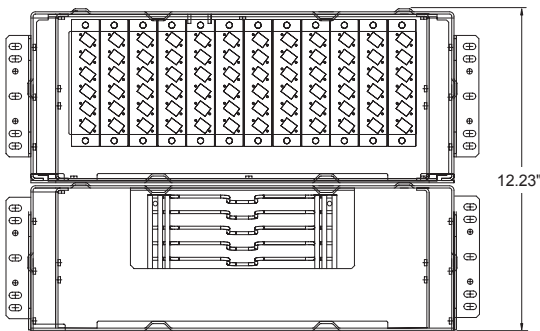
DPC-105



DPC-700



Top View



DPC-752

Make to order!

LIGHTSPACE® DPC SERIES OPTICAL DISTRIBUTION & SPLICE ENCLOSURES

MODEL	ADAPTER PLATE	NUMBER OF PLATES	FIBER TYPE	ADAPTER TYPE	SPLICE TRAY STYLES	NUMBER OF SPLICE TRAYS	SECURITY OPTIONS	GROUNDING KIT	CABLE CLAMP KIT
<ul style="list-style-type: none"> • 525 6RU • 752 7RU • 700 8RU • 105 12RU 	<ul style="list-style-type: none"> • 6 Fibers (ST, SC) • 8 Fibers (ST, SC) • 12 Fibers (SC, LC) • 16 Fibers (LC) • 24 Fibers (LC) 	<ul style="list-style-type: none"> • 1-24 	<ul style="list-style-type: none"> • OM1 • OM2 • OM3 • OS2 	<ul style="list-style-type: none"> • ST • SC • LC • SC/APC • LC/APC • ST + Pigtails • SC + Pigtails • LC + Pigtails • SC/APC + Pigtails • LC/APC + Pigtails 	<ul style="list-style-type: none"> • Heat Shrink, Foam, 1-12F • Heat Shrink, Plastic, 1-12F • Bare Fusion Plastic, 1-12F • Heat Shrink, Foam, 1-24F • Heat Shrink, Plastic, 1-24F • Bare Fusion Plastic, 1-24F • None 	<ul style="list-style-type: none"> • 1-12 • None 	<ul style="list-style-type: none"> • Latches Only • Locking Door, Rear • Locking Door, Front • Locking Door, Both Sides 	<ul style="list-style-type: none"> • Yes • No 	<ul style="list-style-type: none"> • Yes • No



DPCxU-xxx, DPC12-066

DPC-525

Holds up to 6 Adapter Plates & 4 Splice Trays

6-pack ST or SC	Up to 36 fibers
8-pack ST or SC	Up to 48 fibers
6-pack duplex SC or LC	Up to 72 fibers
6-pack Quad LC	Up to 144 fibers

DPC-700

Holds up to 12 Adapter Plates & 6 Splice Trays

6-pack ST or SC	Up to 72 fibers
8-pack ST or SC	Up to 96 fibers
6-pack duplex SC or LC	Up to 144 fibers
6-pack Quad LC	Up to 288 fibers

DPC-752

Holds up to 12 Adapter Plates & 4 Splice Trays

6-pack ST or SC	Up to 72 fibers
8-pack ST or SC	Up to 96 fibers
6-pack duplex SC or LC	Up to 144 fibers
6-pack Quad LC	Up to 288 fibers

DPC-105

Holds up to 12 Adapter Plates & 12 Splice Trays

12-pack ST or SC	Up to 144 fibers
12-pack duplex LC	Up to 288 fibers

PART NUMBERS

Description	Part No.
LightSpace® DPC-525 Optical Distribution & Splice Enclosure	DPC6U-033
LightSpace DPC-752 Optical Distribution & Splice Enclosure	DPC7U-043
LightSpace DPC-700 Optical Distribution & Splice Enclosure	DPC8U-STD
LightSpace DPC-105 Optical Distribution & Splice Enclosure	DPC12-066
Grounding Kit	DPGRD-KIT
Key Lock Kit	DPLOK-KIT
Universal Cable Clamp Lit (.25"-1.2" diameter)	DPCMP-UNV



Leviton Network Solutions
 2222 - 222nd St. SE
 Bothell, WA 98021-4416

Asia / Pacific
 T +1.631.812.6228
 E infoasean@leviton.com

Canada
 T +1.514.954.1840
 E pcservice@leviton.com

Caribbean
 T +1.954.593.1896
 E info@caribbean@leviton.com

China
 T +852.2774.9876
 E infochina@leviton.com

Colombia
 T +57.1.743.6045
 E infocolombia@leviton.com

tel 1-800-824-3005
 tel +1-425-486-2222
 appeng@leviton.com
 www.leviton.com

Europe
 T +33.6.8869.1380
 E infoeurope@leviton.com

India / SAARC
 T +971.4.886.4722
 E infoindia@leviton.com

Mexico
 T +52.55.5082.1040
 E lsamarketing@leviton.com

Middle East & Africa
 T +971.4.886.4722
 E lmeinfo@leviton.com

South Korea
 T +82.2.3273.9963
 E infokorea@leviton.com