

FEATURES & SPECIFICATIONS

INTENDED USE — Square straight steel pole for up to 39-foot mounting height.

CONSTRUCTION — Weldable-grade, hot-rolled, commercial-quality carbon steel tubing with a minimum yield of 55,000 psi (11-gauge), or 50,000 psi (7-gauge). Uniform wall thickness of .1196" or .1793". Shaft is one-piece with a full-length longitudinal high-frequency electric resistance weld. Uniformly square in cross-section with flat sides, small corner radii and excellent torsional qualities. Available shaft widths are 4, 5 and 6 inches.

Anchor base is fabricated from hot-rolled carbon steel plate conforming to ASTM A36, that meets or exceeds a minimum-yield strength of 36,000 psi. Base plate and shaft are circumferentially welded top and bottom. Base cover is finished to match pole.

A handhole having nominal dimensions of 3" x 5" for all shafts. Included is a cover with attachment screws.

Top cap provided with all drill-mount and open top "PT" poles.

Fasteners are high-strength galvanized, zinc-plated or stainless steel.

Finish: Must specify finish.

Grounding: Provision located immediately inside handhole rim. Grounding hardware is not included (provided by others).

Anchor bolts: Top portion of anchor bolt is galvanized per ASTM A-153. Made of steel rod having a minimum yield strength of 55,000 psi.

Note: Specifications subject to change without notice.

Actual performance may differ as a result of end-user environment and application.

Catalog Number
Notes
Type



Anchor Base Poles

SSS

SQUARE STRAIGHT STEEL

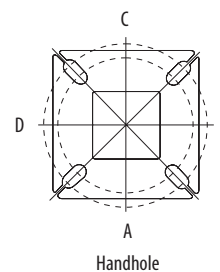
ORDERING INFORMATION Lead times will vary depending on options selected. Consult with your sales representative. **Example: SSS 20 5C DM19 DDB**

SSS Series	Nominal fixture mounting height	Nominal shaft base size/wall thickness	Mounting ¹	Options	Finish ¹⁰	
SSS	10 – 39 feet (See back page.)	(See back page.)	<p><u>Tenon mounting</u></p> <p>PT Open top (includes top cap)</p> <p>T20 2-3/8" O.D. (2" NPS)</p> <p>T25 2-7/8" O.D. (2-1/2" NPS)</p> <p>T30 3-1/2" O.D. (3" NPS)</p> <p>T35 4" O.D. (3-1/2" NPS)</p> <p><u>Drill mounting²</u></p> <p>DM19 1 at 90°</p> <p>DM28 2 at 180°</p> <p>DM28 PL 2 at 180° with one side plugged</p> <p>DM29 2 at 90°</p> <p>DM39 3 at 90°</p> <p>DM49 4 at 90°</p> <p><u>CSX/DSX/AERIS™/OMERO™ Drill mounting²</u></p> <p>DM19AS 1 at 90°</p> <p>DM28AS 2 at 180°</p> <p>DM29AS 2 at 90°</p> <p>DM39AS 3 at 90°</p> <p>DM49AS 4 at 90°</p>	<p><u>AERIS™ Suspend drill mounting^{2,3}</u></p> <p>DM19AST_ 1 at 90°</p> <p>DM28AST_ 2 at 180°</p> <p>DM29AST_ 2 at 90°</p> <p>DM39AST_ 3 at 90°</p> <p>DM49AST_ 4 at 90°</p> <p><u>OMERO™ Suspend drill mounting^{2,3}</u></p> <p>DM19MRT_ 1 at 90°</p> <p>DM28MRT_ 2 at 180°</p> <p>DM29MRT_ 2 at 90°</p> <p>DM39MRT_ 3 at 90°</p> <p>DM49MRT_ 4 at 90°</p>	<p><u>Shipped installed</u></p> <p>L/AB Less anchor bolts</p> <p>VD Vibration damper</p> <p>TP Tamper proof</p> <p>H1-18Sxx Horizontal arm bracket (1 fixture)^{4,5}</p> <p>FDLxx Festoon outlet less electrical⁴</p> <p>CPL12xx 1/2" coupling⁴</p> <p>CPL34xx 3/4" coupling⁴</p> <p>CPL1xx 1" coupling⁴</p> <p>NPL12xx 1/2" threaded nipple⁴</p> <p>NPL34xx 3/4" threaded nipple⁴</p> <p>NPL1xx 1" threaded nipple⁴</p> <p>EHHxx Extra handhole^{4,6}</p> <p>MAEX Match existing⁷</p> <p>USPOM United States point of manufacture⁸</p> <p>IC Interior coating⁹</p>	<p><u>Standard colors</u></p> <p>DDB Dark bronze</p> <p>DWH White</p> <p>DBL Black</p> <p>DMB Medium bronze</p> <p>DNA Natural aluminum</p> <p><u>Classic colors</u></p> <p>DSS Sandstone</p> <p>DGC Charcoal gray</p> <p>DTG Tennis green</p> <p>DBR Bright red</p> <p>DSB Steel blue</p> <p><u>Architectural colors (powder finish)¹⁰</u></p>

NOTES:

- PT open top poles include top cap. When ordering tenon mounting and drill mounting for the same pole, follow this example: DM28/T20. The combination includes a required extra handhole.
- The drilling template to be used for a particular luminaire depends on the luminaire that is used. Refer to the Technical Data Section of the Outdoor Binder for Drilling Templates.
- Insert "1" or "2" to designate fixture size; e.g. DM19AST2.
- Specify location and orientation when ordering option.
For 1st "x": Specify the height in feet above base of pole.
Example: 5ft = 5 and 20ft = 20
For 2nd "x": Specify orientation from handhole (A,B,C,D)
Refer to the Handhole Orientation diagram above.
- Horizontal arm is 18" x 2-3/8" O.D. tenon standard.
- Combination of tenon-top and drill mount includes extra handhole.
- Must add original order number
- Use when mill certifications are required.
- Provides enhanced corrosion resistance.
- Additional colors available; see www.lithonia.com/archcolors or Architectural Colors brochure (Form No. 794.3). Powder finish standard.

HANDHOLE ORIENTATION



IMPORTANT INSTALLATION NOTES:

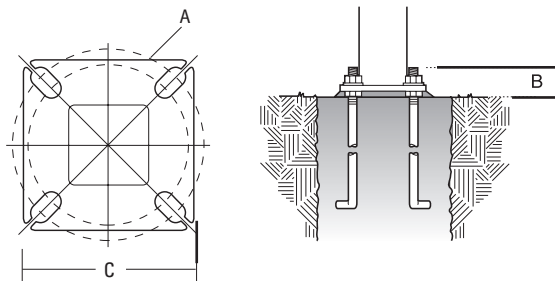
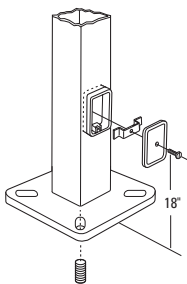
- Do not erect poles without having fixtures installed.
- Factory-supplied templates must be used when setting anchor bolts. Lithonia Lighting will not accept claim for incorrect anchorage placement due to failure to use Lithonia Lighting factory templates.
- If poles are stored outside, all protective wrapping must be removed immediately upon delivery to prevent finish damage.
- Lithonia Lighting is not responsible for the foundation design.

SSS Square Straight Steel Poles

TECHNICAL INFORMATION

Catalog Number	Nominal mount ht. (ft)	Pole Shaft Size (in x ft)	Wall Thickness (in)	Gauge	EPA (ft ²) with 1.3 gust						Bolt Circle (in)	Bolt Size (in x in x in)	Approximate ship (lbs)
					80 mph	Max. weight	90 mph	Max. weight	100 mph	Max. weight			
SSS 10 4C	10	4.0 x 10.0	0.1196	11	30.6	765	23.8	595	18.9	473	8--9	3/4 x 18 x 3	75
SSS 12 4C	12	4.0 x 12.0	0.1196	11	24.4	610	18.8	470	14.8	370	8--9	3/4 x 18 x 3	90
SSS 14 4C	14	4.0 x 14.0	0.1196	11	19.9	498	15.1	378	11.7	293	8--9	3/4 x 18 x 3	100
SSS 16 4C	16	4.0 x 16.0	0.1196	11	15.9	398	11.8	295	8.9	223	8--9	3/4 x 18 x 3	115
SSS 18 4C	18	4.0 x 18.0	0.1196	11	12.6	315	9.2	230	6.7	168	8--9	3/4 x 18 x 3	125
SSS 20 4C	20	4.0 x 20.0	0.1196	11	9.6	240	6.7	167	4.5	150	8--9	3/4 x 18 x 3	140
SSS 20 4G	20	4.0 x 20.0	0.1793	7	14	350	11	275	8	200	8--9	3/4 x 30 x 3	198
SSS 20 5C	20	5.0 x 20.0	0.1196	11	17.7	443	12.7	343	9.4	235	10--12	1 x 36 x 4	185
SSS 20 5G	20	5.0 x 20.0	0.1793	7	28.1	703	21.4	535	16.2	405	10--12	1 x 36 x 4	265
SSS 25 4C	25	4.0 x 25.0	0.1196	11	4.8	150	2.6	100	1	50	8--9	3/4 x 18 x 3	170
SSS 25 4G	25	4.0 x 25.0	0.1793	7	10.8	270	7.7	188	5.4	135	8--9	3/4 x 30 x 3	245
SSS 25 5C	25	5.0 x 25.0	0.1196	11	9.8	245	6.3	157	3.7	150	10--12	1 x 36 x 4	225
SSS 25 5G	25	5.0 x 25.0	0.1793	7	18.5	463	13.3	333	9.5	238	10--12	1 x 36 x 4	360
SSS 30 4G	30	4.0 x 30.0	0.1793	7	6.7	168	4.4	110	2.6	65	8--9	3/4 x 30 x 3	295
SSS 30 5C	30	5.0 x 30.0	0.1196	11	4.7	150	2	50	--	--	10--12	1 x 36 x 4	265
SSS 30 5G	30	5.0 x 30.0	0.1793	7	10.7	267	6.7	167	3.9	100	10--12	1 x 36 x 4	380
SSS 30 6G	30	6.0 x 30.0	0.1793	7	19	475	13.2	330	9	225	11--13	1 x 36 x 4	520
SSS 35 5G	35	5.0 x 35.0	0.1793	7	5.9	150	2.5	100	--	--	10--12	1 x 36 x 4	440
SSS 35 6G	35	6.0 x 35.0	0.1793	7	12.4	310	7.6	190	4.2	105	11--13	1 x 36 x 4	540
SSS 39 6G	39	6.0 x 39.0	0.1793	7	7.2	180	3	75	--	--	11--13	1 x 36 x 4	605

BASE DETAIL



POLE DATA

Shaft base size	Bolt circle A	Bolt projection B	Base square C	Template description	Anchor bolt description	Anchor bolt and template number
4"C	8-1/2"	2-3/4"-4"	8"	ABTEMPLATE PJ50004	AB18-0	ABSSS-4C
4"G	8-1/2"	2-3/4"-4"	8"	ABTEMPLATE PJ50004	AB30-0	ABSSS-4G
5"	10"-12"	3-3/8"-4"	11"	ABTEMPLATE PJ50010	AB36-0	ABSSS-5
6"	11"-13"	3-3/8"-4"	12-1/2"	ABTEMPLATE PJ50011	AB36-0	N/A

IMPORTANT:

• These specifications are intended for general purposes only. Lithonia reserves the right to change material or design, without prior notice, in a continuing effort to upgrade its products.