

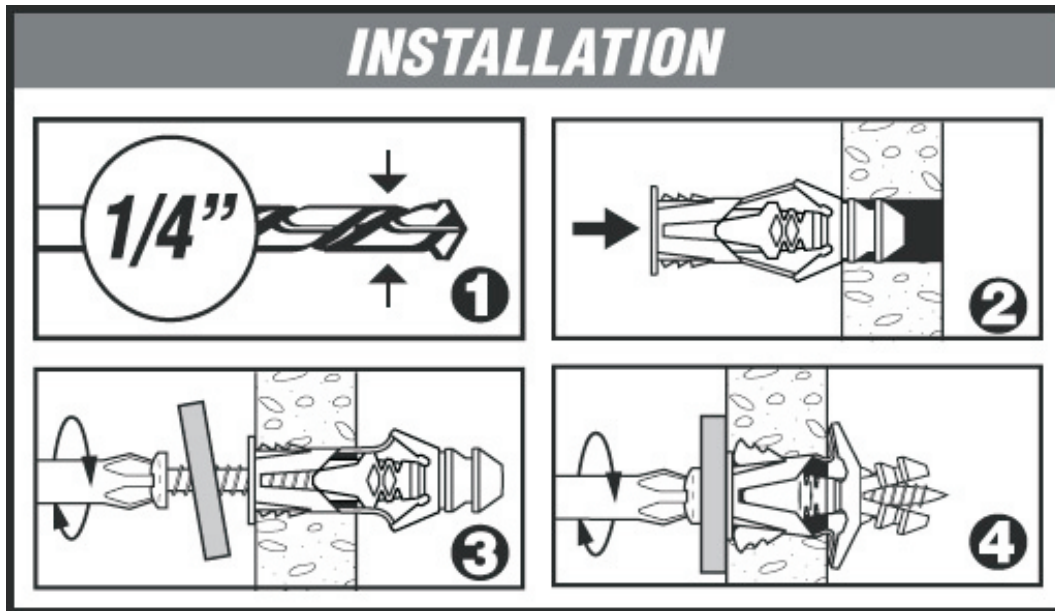
# Multi Grip



## Installation Instructions

6•8•10•12•TG10KTP•TG6KTP•TG12KTP•TG10KHXTTP

\*Not Recommended for use in overhead applications



Size	Drill Size
# 6 (Beige) - 3.5mm	1/4"
# 8 (Grey) - 4mm	1/4"
# 10 (Blue) - 5mm	5/16"
# 12 (Green) - 6mm	3/8"