



Brady Safety Solutions for the **Mining Industry**

Creating the Right Conditions at Your Mining Site



Safety is the top priority in mining today. Whether above ground or below, accurate identification helps keep employees out of harms way. It also keeps costly MSHA violation fines at bay and your operation running smoothly.

Combined with an aging workforce and the resulting knowledge loss, it's more important than ever to implement solutions around your mining site that increase productivity and efficiency – and ultimately profitability.

Brady's complete solutions include visual information products like: signs and labels, safety devices for lockout/tagout programs, and smart technology like printers and software that help you bridge the experience gap left by a retiring workforce.

Coupling our innovative products and professional workshops and services, you'll be able to create the perfect conditions at your unique mining site.



Mining At-A-Glance

- US mines employ more than 380,000 miners
- Roughly 155,000 citations and orders are issued each year
- Top violations include:
 - lockout/tagout
 - slips, trips & falls
 - signs & labels
- Average annual cost of citations is \$10,800 USD per mine





Lockout/Tagout

Keep your most valuable resource safe from hazardous energy at your mining site by implementing a lockout/tagout program for your employees. With both fatal and non-fatal electrical accidents being reported as a main MSHA violation, it's important to make sure circuits are locked, grounded, and tagged prior to any maintenance work being performed.

! Regulations

The following MSHA regulations protect your employees:

- **§ 56.12016 & § 57.12016** Work on electrically powered equipment
- **§ 57.509 & § 77.500** Danger signs at electrical installations



All Purpose Cable Lockout

- Compact, lightweight body made of rugged Isoplast can be used in a variety of applications
- Available with two types of cables: nonconductive nylon and sheathed metal

Catalog #	Description
50943	Lockout w/ 8' sheathed metal cable
50941	Lockout w/ 8' non-conductive nylon cable
50944	Lockout without cable



Gate Valve Lockouts

- Made of rugged injection-molded polypropylene
- Available in 5 sizes, and additional colors including yellow, green, and blue

Fits Valve Handles Dia.	Red
1" to 2-1/2"	65560
2-1/2" to 5"	65561
5" to 6-1/2"	65562
6-1/2" to 10"	65563
10" to 13"	65564



Prinzing Ball Valve Lockout

- Small lockout locks out pipes 1/2" to 2 1/2" in diameter, Large lockout locks out pipes 2" to 8" in diameter
- Also available in yellow, green, and blue"

Size	Red
Small	BS07A
Large	BS08A



Compact & Safety Padlocks

- Superior temperature, chemical and corrosion resistance
- Body is nonconductive and comes with key retaining feature
- Ideal for your lockout/tagout program

Color	Keyed Different 1/Pack	Keyed Different 6/Pack	Keyed Alike 3/Pack	Keyed Alike 6/Pack
Compact Safety Padlocks				
Red	143150	118926	118953	118954
Green	143152	118927	118955	118956
Blue	143156	118929	118959	118960
Yellow	143158	118930	118961	118962
Safety Padlocks				
Red	99552	51339	105886	105890
Green	99564	51345	105889	105893
Blue	99556	51344	105887	105891
Yellow	99570	51346	105888	105892

*Brady offers additional colors as well as steel padlocks, and aluminum padlocks - including custom options. When keyed alike, all locks in a set can be opened with the same key. This option is beneficial when multiple locks are assigned to a single employee.



Steel Group Lockout Hasps

- Constructed of vinyl-coated high tensile steel w/ rust resistant plating
- Lock holes: 3/8" diameter

Catalog #	Description	Qty.
65375	1" Diameter Jaws	12
65376	1-1/2" Diameter Jaws	12



Portable Metal Group Lockout Boxes

- Made of heavy duty steel, powder-coated for extra rust resistance
- Essential for group lockout situations

Catalog #	Description	Size
65699	Red - Standard	6"H x 9"W x 3-1/2"D
51171	Red - XL	6"H x 7-3/8"W x 9-1/2"D

* Padlocks sold separately.

Standard Lockout Tags

- Communicate safety and lockout information at the point of need with the wide selection of Lockout/Tagout tags.

Catalog #	Reverse Legend	Qty.
Heavy Duty Polyester 5-1/2" x 3"		
65502	Side B	25
65670	Side G	25
Economy Polyester 5-3/4" x 3"		
66050	Side B	25
66052	Side G	25
Cardstock 5-3/4" x 3"		
65407	Side B	25
65440	Side G	25



Electrical Lockout

- Extremely versatile - work on a wide range of breaker sizes and types!
- View Brady's Circuit Breaker Lockout Reference Guide to find out which device is right for your breaker



Catalog #	Description	Qty.
65396	120/277V Clamp-On Breaker Lockout	1
65397	480/600V Clamp-On Breaker Lockout	1
66321	Universal Multi-Pole Breaker Lockout	1
65329	Oversized Breaker Lockout	1

Arc Flash Labels

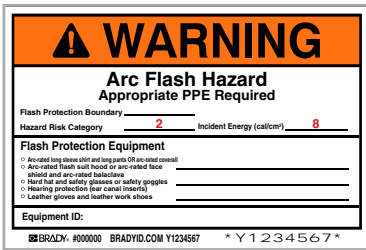
To increase safety and ensure compliance throughout your site – and avoid equipment damage – it’s critical to learn and identify arc flash hazards, train employees in safe work practices, and use labels and other awareness aids to keep the message front and center.

Brady offers a variety of stock label formats, our basic warning and danger labels meet all MSHA and NFPA requirements. For more detailed accident prevention use our write-on labels that allow you to fill in the appropriate hazard and safety information.

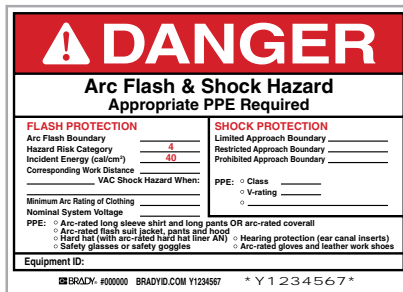


Arc Flash Labels with Pre-printed Hazard Categories

- Labels come with the hazard category and PPE requirements preprinted
- Write-in areas for specifics such as min arc rating, flash protection boundary, etc.
- B-7569 Vinyl can be written on with pen or marker.



4" x 6" Arc flash hazard



5" x 7" Arc flash & shock hazard

Catalog #	Header	Hazard	Size	Quantity
121095	Warning	0	4" x 6"	5/pack
121097	Warning	1	4" x 6"	5/pack
121099	Warning	2	4" x 6"	5/pack
121101	Warning	3	4" x 6"	5/pack
121103	Warning	4	4" x 6"	5/pack
121096	Danger	0	4" x 6"	5/pack
121098	Danger	1	4" x 6"	5/pack
121100	Danger	2	4" x 6"	5/pack
121102	Danger	3	4" x 6"	5/pack
121104	Danger	4	4" x 6"	5/pack

Catalog #	Header	Hazard	Size	Quantity
121083	Warning	0	5" x 7"	5/pack
121085	Warning	1	5" x 7"	5/pack
121087	Warning	2	5" x 7"	5/pack
121091	Warning	3	5" x 7"	5/pack
121093	Warning	4	5" x 7"	5/pack
121084	Danger	0	5" x 7"	5/pack
121086	Danger	1	5" x 7"	5/pack
121088	Danger	2	5" x 7"	5/pack
121092	Danger	3	5" x 7"	5/pack
121094	Danger	4	5" x 7"	5/pack

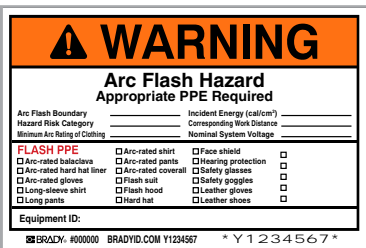
! Regulations

The following MSHA regulations protect your employees:

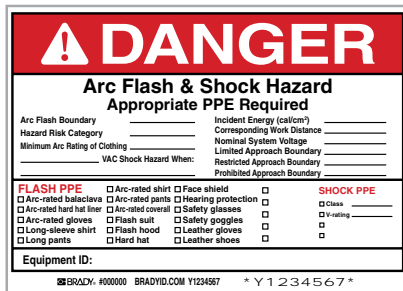
- **§ 56.12021 & § 57.12021** Danger signs at electrical installations
- **§ 77511** Danger signs at electrical installations

Write-On Arc Flash Labels

- Write-in areas for equipment-specific information like flash protection boundary, hazard category, and required PPE.
- B-7569 Vinyl can be written on with pen or marker.



4" x 6" Arc flash hazard



5" x 7" Arc flash & shock hazard

Catalog #	Header	Size	Quantity
121079	Warning	4" x 6"	5/pack
121080	Danger	4" x 6"	5/pack

Catalog #	Header	Size	Quantity
121077	Warning	5" x 7"	5/pack
121078	Danger	5" x 7"	5/pack



Protective Overlaminate for Write-on Labels

- 1.5 mil clear polyester overlaminate sheets help protect handwritten data on vinyl labels from chemicals and abrasion. Sheets have an acrylic layflat liner.

Catalog #	Size	Quantity
99272	4.5" x 6.5"	25/pack
99276	5.5" x 7.5"	25/pack



Absorbents

Slips, trips, and falls account for 20 percent of reportable incidents in the mining industry. By complying with MSHA and EPA regulations around spill control, you can provide your employees with conditions that allow for the greatest productivity and least amount of downtime in your mine.

For more than 30 years, Brady's absorbents have helped customers protect against leaks, drips, and spills that create safety hazards in the workplace. Choose from our chemical, oil only, or universal options to meet your needs.



BattleMat® Absorbents

- Ideal for areas with moderate foot traffic or as single use absorbents
- Camouflage patterned, universal 2-ply construction with a durable, abrasion-resistant upper layer

Catalog #	Type	Size	Qty.
BattleMat Pads			
BM100	Heavy Wt.*	15"x19"	100
BattleMat Rolls			
BM30	Heavy Wt.*	30"x150'	1
BM15	Heavy Wt.*	15"x150'	1

* Perforated



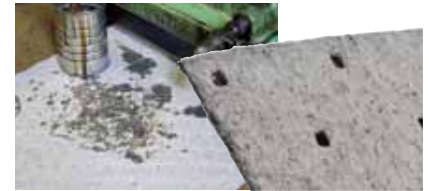
Oil Plus Oil Absorbents

- Dimpled and perforated absorbent for general everyday use and emergency spill clean-up.
- 3-ply (MMM) Meltblown Polypropylene construction

Catalog #	Type	Size	Qty.
Oil Plus Pads			
OP100	Heavy Wt.*	15"x19"	100
OP300	Medium Wt.*	15"x19"	100
Oil Plus Rolls			
OP30DP	Heavy Wt.*	30"x150'	1
OP30P	Heavy Wt.*	30"x150'	1
OP30	Heavy Wt.	30"x150'	1
OP15P	Heavy Wt.*	15"x150'	1
OP15	Heavy Wt.	15"x150'	1

* Perforated

*OP150DND has Dispense-n-Dispose™ System



MRO Plus® Absorbents

- All-purpose maintenance absorbent
- 3-ply (MMM) Meltblown Polypropylene makes it durable and reduces lint

Catalog #	Type	Size	Qty.
MRO Plus Pads			
MRO100	Heavy Wt.*	15"x19"	100
MRO300	Medium Wt.*	15"x19"	100
MRO Plus Rolls			
MRO30DP	Heavy Wt.*	30"x150'	1
MRO30P	Heavy Wt.*	30"x150'	1
MRO15P	Heavy Wt.*	15"x150'	1
MRO350DP	Medium Wt.*	30"x150'	1
MRO315P	Medium Wt.*	15"x150'	1

* Perforated

*MRO150DND has Dispense-n-Dispose™ System



Universal Plus Absorbents

- Dimpled and perforated green universal absorbent is chemically inert making it ideal for use with aggressive fluids
- Universal Meltblown Polypropylene
- 3-ply construction makes it stronger, more durable and reduces lint

Catalog #	Type	Size	Qty.
Universal Plus Pads			
SPCUN1719	Medium Wt.*	15"x19"	100
SPCUN1113	Medium Wt.	12"x12"	200
Universal Plus Rolls			
SPCUN1019	Medium Wt.*	15"x150'	2

* Perforated



SPC® Oil Absorbents

- Dimpled and perforated absorbent made with MAXX® Technology - greater performance without the extra weight
- Convenient and cost-effective single-ply Oil Only Meltblown Polypropylene

Catalog #	Type	Size	Qty.
SPC Oil Pads			
SPC100	Heavy Wt.*	15"x19"	100
SPC300	Medium Wt.*	15"x19"	100
SPC200	Light Wt.*	15"x19"	200
SPC Oil Rolls			
SPC150	Heavy Wt.	38"x144'	1

* Perforated

! Regulations

The following MSHA regulations protect your employees:

- **§ 56.20003 & § 57.20003** Housekeeping
- **§ 75.1903** Underground diesel fuel storage facilities and areas

Printers & Software

Brady's industrial printers and label makers offer reliable, on-demand labeling solutions for the mining industry. Designed with thermal transfer printing capabilities, our printers create clear, professional-looking labels, signs, and tags – with the durability to withstand even the harshest environments.



Regulations

The following MSHA regulations protect your employees:

- **§ 47.41** Requirement for container labels
- **§ 56.12018 & § 57.12018** Identification of power switches
- **§ 75.809 & § 77.904** Identification of circuit breakers and disconnecting switches

GLOBAL MARK² INDUSTRIAL LABEL MAKER



Catalog #	Description
76801	GlobalMark ² Color & Cut*
76800	GlobalMark ² MultiColor *

* Includes with keyboard, power cord, cleaning kit, USB cable and Brady File Management Utility.

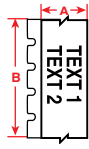


Figure 33

Reflective B-584 Tape

- Permanent adhesive/outdoor grade
- Shines back at viewer brightly when light shines on label
- Not recommended for plotter cutting

Diagram	Catalog #	B#	Color	Label Width A Inch (mm)	Label Height B Inch (mm)	Labels Per Roll
Fig. 33	76705	B-584	Silver	4.000 (101.6)	50ft. (15.2m)	1 Roll (cont.)
Fig. 33	76706	B-584	Silver	2.250 (57.5)	50ft. (15.2m)	1 Roll (cont.)
Fig. 33	76707	B-584	Silver	1.375 (34.9)	50ft. (15.2m)	1 Roll (cont.)
Fig. 33	96060	B-584	Yellow	4.000 (101.6)	50ft. (15.2m)	1 Roll (cont.)
Fig. 33	96061	B-584	Yellow	2.250 (57.5)	50ft. (15.2m)	1 Roll (cont.)
Fig. 33	96062	B-584	Yellow	1.375 (34.9)	50ft. (15.2m)	1 Roll (cont.)
Fig. 33	99219	B-584	Orange	4.000 (101.6)	50ft. (15.2m)	1 Roll (cont.)
Fig. 33	99220	B-584	Orange	2.250 (57.5)	50ft. (15.2m)	1 Roll (cont.)
Fig. 33	99221	B-584	Orange	1.375 (34.9)	50ft. (15.2m)	1 Roll (cont.)

Single Color Print Ribbons

Catalog #	Color	Size Inch (mm)	Length
76739	Black	4.110 (104.4)	200 ft. (60.9 m)
76741	White	4.110 (104.4)	200 ft. (60.9 m)
76743	Red	4.110 (104.4)	200 ft. (60.9 m)

Four Color Print Ribbons (Not Available for MonoColor)

Catalog #	Color	Size Inch (mm)	Length
4.110" x 8.000" Panels - Typical yield: Fifty 8" labels from 8" paneled ribbon			
76795	Cyan/Magenta/Yellow/Blk	4.110 x 8.000 Panels	200 ft. (60.9 m)
4.110" x 16.000" Panels - Typical yield: Thirty 16" labels from 16" paneled ribbon			
76794	Cyan/Magenta/Yellow/Blk	4.110 x 16.000 Panels	200 ft. (60.9 m)



Markware™ Facility Identification Software

All your mine safety and facility needs in one powerful package. Markware™ Software provides you with a label printing solution that lets you create and print your own safety and identification signage.



- Use your pc to quickly design professional-looking signs and labels
- Print directly to your Brady printer system
- Pre-formatted templates, or customized layouts to your own specs
- Import logos and photos or create barcodes
- Contains built-in library with more than 1,000 symbols & pictograms

Catalog #	Description
20700	MarkWare™ Label Software



Figure 33

Indoor/Outdoor Grade Vinyl Tape (B-595 Material)

- Low-shrink vinyl minimizes the amount of unsightly dust and grime buildup often found around the edges of other vinyl labeling supplies
- 8-10 year average outdoor durability in temperatures from -40°F to 180°F (-40°C to 82°C). Labels can be applied in temperatures from 0°F to 180°F
- Patent Number D481.414

Diagram	Catalog #	B#	Color	Label Width A Inch (mm)	Label Height B Inch (mm)	Labels Per Roll
Fig. 33	113109	B-595	White	4.000 (101.6)	100ft. (30.5m)	1 Roll (cont.)
Fig. 33	113110	B-595	White	3.000 (76.2)	100ft. (30.5m)	1 Roll (cont.)
Fig. 33	113111	B-595	White	2.250 (57.5)	100ft. (30.5m)	1 Roll (cont.)
Fig. 33	113112	B-595	White	1.125 (28.6)	100ft. (30.5m)	1 Roll (cont.)
Fig. 33	113113	B-595	White	0.500 (12.7)	100ft. (30.5m)	1 Roll (cont.)
Fig. 33	113114	B-595	Yellow	4.000 (101.6)	100ft. (30.5m)	1 Roll (cont.)
Fig. 33	113115	B-595	Yellow	3.000 (76.2)	100ft. (30.5m)	1 Roll (cont.)
Fig. 33	113116	B-595	Yellow	2.250 (57.5)	100ft. (30.5m)	1 Roll (cont.)
Fig. 33	113117	B-595	Yellow	1.125 (28.6)	100ft. (30.5m)	1 Roll (cont.)
Fig. 33	113118	B-595	Yellow	0.500 (12.7)	100ft. (30.5m)	1 Roll (cont.)
Fig. 33	113119	B-595	Red	4.000 (101.6)	100ft. (30.5m)	1 Roll (cont.)
Fig. 33	113120	B-595	Red	2.250 (57.5)	100ft. (30.5m)	1 Roll (cont.)
Fig. 33	113121	B-595	Red	1.125 (28.6)	100ft. (30.5m)	1 Roll (cont.)
Fig. 33	113151	B-595	Orange	4.000 (101.6)	100ft. (30.5m)	1 Roll (cont.)
Fig. 33	113152	B-595	Orange	2.250 (57.5)	100ft. (30.5m)	1 Roll (cont.)
Fig. 33	113153	B-595	Orange	1.125 (28.6)	100ft. (30.5m)	1 Roll (cont.)
Fig. 33	113154	B-595	Orange	0.500 (12.7)	100ft. (30.5m)	1 Roll (cont.)
Fig. 33	113105	B-595	Clear	4.000 (101.6)	100ft. (30.5m)	1 Roll (cont.)
Fig. 33	113106	B-595	Clear	2.250 (57.5)	100ft. (30.5m)	1 Roll (cont.)
Fig. 33	113107	B-595	Clear	1.125 (28.6)	100ft. (30.5m)	1 Roll (cont.)
Fig. 33	113108	B-595	Clear	0.500 (12.7)	100ft. (30.5m)	1 Roll (cont.)



BMP®71 LABEL PRINTER

Catalog #	Description
BMP71	BMP71 Printer*
BMP71-MW	BMP71 Printer* w/ Markware Lean Software

*Printer ships with Hardcase, Charger/AC Adapter, (1) Roll of M71-31-423 White Die Cut Labels, (1) M71-R6000 Black Ribbon Cartridge, Media Adapter, Rechargeable Battery, USB Cable, Quickstart Guide, drivers CD, Users Guide, Tutorial and 1 year Limited Warranty.

BMP®71 Printer Ribbons

Catalog #	Color	Size
M71-R6000	Black	150' (45.7 m)
M71-R4400-WT	White	150' (45.7 m)

Note: Black Ribbon M71-R6000 included with BMP71 printer purchase.

Reflective / Low Light Applications

Great for egress and other critical pieces of information.

- **B-582 BradyGlo™ Phosphorescent Polyester** - Light absorbing and will glow for 10 hrs.
- **B-584 Reflective Tape** - Highly reflective and shines back brightly when struck by light.



Figure 33

Diagram	Catalog #	B#	Material	Color	Label Width A Inch (mm)	Label Height B Inch (mm)	Labels Per Roll	Rec. Ribbon
B-582 BradyGlo™ Phosphorescent Polyester								
Fig. 33	BM71C-1000-582*	B-582	Phosphorescent	Phosphorescent	1.000 (25.4)	75 ft. (22.8 m)	1 Roll (cont.)	M71-R6000
Fig. 33	BM71C-2000-582*	B-582	Phosphorescent	Phosphorescent	2.000 (50.8)	75 ft. (22.8 m)	1 Roll (cont.)	M71-R6000
B-584 Reflective Tape								
Fig. 33	BM71C-1000-584-OR*	B-584	Reflective Tape	Orange	1.000 (25.4)	75 ft. (22.8 m)	1 Roll (cont.)	M71-R6000
Fig. 33	BM71C-1000-584-WT*	B-584	Reflective Tape	Silver	1.000 (25.4)	75 ft. (22.8 m)	1 Roll (cont.)	M71-R6000
Fig. 33	BM71C-1000-584-YL*	B-584	Reflective Tape	Yellow	1.000 (25.4)	75 ft. (22.8 m)	1 Roll (cont.)	M71-R6000
Fig. 33	BM71C-2000-584-OR*	B-584	Reflective Tape	Orange	2.000 (50.8)	75 ft. (22.8 m)	1 Roll (cont.)	M71-R6000
Fig. 33	BM71C-2000-584-WT*	B-584	Reflective Tape	Silver	2.000 (50.8)	75 ft. (22.8 m)	1 Roll (cont.)	M71-R6000
Fig. 33	BM71C-2000-584-YL*	B-584	Reflective Tape	Yellow	2.000 (50.8)	75 ft. (22.8 m)	1 Roll (cont.)	M71-R6000

* Bulk roll.

Push Button Raised Panel Labels

- **B-593 Foam Backed Polyester Label** - Customized legend plates with less hassle and wasted time than engraved plates. RoHS compliant and UL approved. Available with both 22 and 30 mm hole diameters.

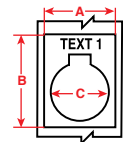


Figure 49



Diagram	Catalog #	B#	Material	Color	Label Width A Inch (mm)	Label Height B Inch (mm)	Hole Diameter C Inch (mm)	Labels Per Roll	Rec. Ribbon
B-593 Foam Backed Polyester Label									
Fig. 49	M71EP-167-593	B-593	Polyester	White	1.200 (30.480)	1.500 (38.1)	0.890 (22.5)	100	M71-R6000
Fig. 49	M71EP-167-593-BK	B-593	Polyester	Black	1.200 (30.480)	1.500 (38.1)	0.890 (22.5)	100	M71-R4400-WT
Fig. 49	M71EP-167-593-GN	B-593	Polyester	Green	1.200 (30.480)	1.500 (38.1)	0.890 (22.5)	100	M71-R4400-WT
Fig. 49	M71EP-167-593-RD	B-593	Polyester	Red	1.200 (30.480)	1.500 (38.1)	0.890 (22.5)	100	M71-R4400-WT
Fig. 49	M71EP-168-593-BK	B-593	Polyester	Black	1.200 (30.480)	1.900 (48.3)	0.890 (22.5)	100	M71-R4400-WT
Fig. 49	M71EP-168-593-GN	B-593	Polyester	Green	1.200 (30.480)	1.900 (48.3)	0.890 (22.5)	100	M71-R4400-WT
Fig. 49	M71EP-168-593-RD	B-593	Polyester	Red	1.200 (30.480)	1.900 (48.3)	0.890 (22.5)	100	M71-R4400-WT
Fig. 49	M71EP-169-593	B-593	Polyester	White	1.800 (45.720)	1.800 (45.7)	1.200 (30.5)	100	M71-R6000
Fig. 49	M71EP-169-593-BK	B-593	Polyester	Black	1.800 (45.720)	1.800 (45.7)	1.200 (30.5)	100	M71-R4400-WT
Fig. 49	M71EP-169-593-GN	B-593	Polyester	Green	1.800 (45.720)	1.800 (45.7)	1.200 (30.5)	100	M71-R4400-WT
Fig. 49	M71EP-169-593-RD	B-593	Polyester	Red	1.800 (45.720)	1.800 (45.7)	1.200 (30.5)	100	M71-R4400-WT

Indoor/Outdoor Labels for General Industrial, Lean & Safety ID

- **B-595 Indoor/Outdoor Vinyl Film** - Aggressive permanent adhesive, very pliable, conforms to rough surfaces, excellent resistance to oils, detergents, dirt, and many solvents.
- **B-529 Economy Polypropylene Tape** - For use indoors on smooth, flat surfaces.

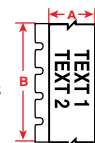


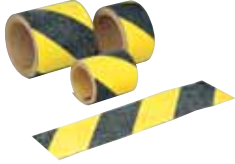
Figure 33



Diagram	Catalog #	B#	Material	Color	Label Width A Inch (mm)	Label Height B Inch (mm)	Labels Per Roll	Rec. Ribbon
B-595 Indoor/Outdoor Vinyl Film								
Fig. 33	M71C-500-595-CL	B-595	Vinyl	Clear	0.500 (12.7)	50 ft. (15.2 m)	1 Roll (cont.)	M71-R6000
Fig. 33	M71C-1000-595-CL	B-595	Vinyl	Clear	1.000 (25.4)	50 ft. (15.2 m)	1 Roll (cont.)	M71-R6000
Fig. 33	M71C-2000-595-CL	B-595	Vinyl	Clear	2.000 (50.8)	50 ft. (15.2 m)	1 Roll (cont.)	M71-R6000
Fig. 33	M71C-500-595-OR	B-595	Vinyl	Orange	0.500 (12.7)	50 ft. (15.2 m)	1 Roll (cont.)	M71-R6000
Fig. 33	M71C-1000-595-OR	B-595	Vinyl	Orange	1.000 (25.4)	50 ft. (15.2 m)	1 Roll (cont.)	M71-R6000
Fig. 33	M71C-2000-595-OR	B-595	Vinyl	Orange	2.000 (50.8)	50 ft. (15.2 m)	1 Roll (cont.)	M71-R6000
Fig. 33	M71C-500-595-RD	B-595	Vinyl	Red	0.500 (12.7)	50 ft. (15.2 m)	1 Roll (cont.)	M71-R4400-WT
Fig. 33	M71C-1000-595-RD	B-595	Vinyl	Red	1.000 (25.4)	50 ft. (15.2 m)	1 Roll (cont.)	M71-R4400-WT
Fig. 33	M71C-2000-595-RD	B-595	Vinyl	Red	2.000 (50.8)	50 ft. (15.2 m)	1 Roll (cont.)	M71-R4400-WT
Fig. 33	M71C-500-595-WT	B-595	Vinyl	White	0.500 (12.7)	50 ft. (15.2 m)	1 Roll (cont.)	M71-R6000
Fig. 33	M71C-1000-595-WT	B-595	Vinyl	White	1.000 (25.4)	50 ft. (15.2 m)	1 Roll (cont.)	M71-R6000
Fig. 33	M71C-2000-595-WT	B-595	Vinyl	White	2.000 (50.8)	50 ft. (15.2 m)	1 Roll (cont.)	M71-R6000
Fig. 33	M71C-500-595-YL	B-595	Vinyl	Yellow	0.500 (12.7)	50 ft. (15.2 m)	1 Roll (cont.)	M71-R6000
Fig. 33	M71C-1000-595-YL	B-595	Vinyl	Yellow	1.000 (25.4)	50 ft. (15.2 m)	1 Roll (cont.)	M71-R6000
Fig. 33	M71C-2000-595-YL	B-595	Vinyl	Yellow	2.000 (50.8)	50 ft. (15.2 m)	1 Roll (cont.)	M71-R6000

Visual Warnings

Mark your facility at each point-of-need with our high performance visual warning products. They help make sure your safety message is communicated effectively – keeping your employees and visitors safe from harm.



Stripe Anti-Skid Tape

- Rugged B-916 adhesive-backed polyester tape coated with durable aluminum oxide grit is ideal for indoor and outdoor use
- Bonds permanently to clean, dry floors and withstands grease and oil

Catalog #	Size	Color
78146	1" x 60'	Black & Yellow
78147	2" x 60'	Black & Yellow
78148	3" x 60'	Black & Yellow
78149	4" x 60'	Black & Yellow
78150	6" x 60'	Black & Yellow



Heavy Duty Anti-Skid Tapes

- Aggressive adhesive withstands harsh elements such as oil, fuel and grease
- Durable "high slip resistance" with deeply textured silicon carbide grit
- Ideal for machinery, forklifts, loading docks, ramps, platforms and more

Catalog #	Size	Color
110020	2" x 60'	Black
110019	4" x 60'	Black
110018	6" x 60'	Black
110017	12" x 60'	Black



Pennant Barricade Tape

- Tough and durable flag barricade can be used repeatedly
- Pennants are 18" x 18" triangles spaced evenly across tape

Catalog #	Legend
58388	83' Tape with 15 Pennants
58389	113' Tape with 25 Pennants



Reinforced Barricade Tape

- Provides fast, on-the-spot warning
- Standard package: one roll
- 250 lbs tensile strength

Catalog #	Legend	Size	Color
91100	Caution	3" x 500'	Blk/Ylw
91102	Caution Do Not Enter	3" x 500'	Blk/Ylw
91104	Striped	3" x 500'	Blk/Ylw



Barricade Tape

- Non-adhesive B-912 Polyethylene tapes provides fast, on-the-spot warning

Catalog #	Legend	Size	Color
91212	Caution	3" x 200'	Blk/Ylw
91224	Caution Do Not Enter	3" x 200'	Blk/Ylw
91256	Confined Space Do Not Enter	3" x 200'	Blk/Ylw
91200	Danger	3" x 200'	Blk/Red
91450	Caution	3" x 1000'	Blk/Ylw
91451	Caution Do Not Enter	3" x 1000'	Blk/Ylw
91455	Danger	3" x 1000'	Blk/Ylw
91257	Confined Space Do Not Enter	3" x 1000'	Blk/Ylw
91201	Danger	3" x 1000'	Blk/Red
102824	Do Not Enter	3" x 1000'	Blk/Red



Warning Tape

- B-950 vinyl with permanent adhesive stands up to tough indoor conditions
- Colors sealed beneath protective layer of abrasion resistant clear vinyl

Catalog #	Size	Color
Striped		
55300	1" x 18 yd.	Black/Yellow
55301	1-1/2" x 18 yd.	Black/Yellow
55312	1-1/2" x 18 yd.	Magenta/Yellow
55302	2" x 18 yd.	Black/Yellow
55296	2" x 18 yd.	Red/White
55292	2" x 18 yd.	Black/White
90019	2" x 18 yd.	Green/White
55313	2" x 18 yd.	Magenta/Yellow
55303	3" x 18 yd.	Black/Yellow
55297	3" x 18 yd.	Red/White
55293	3" x 18 yd.	Black/White
55314	3" x 18 yd.	Magenta/Yellow
Checked		
76317	2" x 18 yd.	Black/Yellow
76316	2" x 18 yd.	Black/White



Anti-Skid Floor Tape

- B-916 adhesive-backed polyester tape coated with durable aluminum oxide grit
- Bonds permanently to clean, dry floors both indoors and outdoors

Catalog #	Size	Color
78189	1" x 60'	Black
78190	2" x 60'	Black
78198	2" x 60'	Red
78091	2" x 60'	Yellow
78188	2" x 60'	Clear
78191	4" x 60'	Black
78092	4" x 60'	Yellow
78193	6" x 60'	Black
78194	12" x 60'	Black

Regulations

The following MSHA regulations protect your employees:

- **§ 57.11009** Walkways along conveyors
- **§ 77.205** Travelways at surface installations
- **§ 56.110027** Walkways scaffolds and working platforms



B-514 Toughstripe Floor Marking Polyester

ToughStripe products are ideal for marking aisles, passageways and storage locations, and pointing out important safety equipment and egress paths.

- Exceeds safety standards for clean, dry non-slip surfaces per ANSI A1264.2-2006
- 2 mil thickness and service temperature range of 0°F – 129°F
- Resists harsh chemicals
- Custom colors available



Floor Marking Tape

	2" x 100'	3" x 100'	4" x 100'
Black	104310	104340	104370
White	104311	104341	104371
Red	104313	104343	104373
Green	104315	104345	104375
Blue	104314	104344	104374
Orange	104316	104346	104376
Yellow	104312	104342	104372
Black/Yellow Striped	104317	104347	104377
Red/White Striped	104318	104348	104378
Black/White Striped	104319	104349	104379
Black/White Checkered	121913	121914	121915
Red/White Checkered	121916	121917	121918

Pre-Spaced Shapes

	3.5" x 100' 55 dots/18" apart	2" x 5" x 100' 52 arrows/18" apart	2" x 8" x 100' 46 dashes/18" apart
Black	104525	104554	142178
White	104522	104555	142177
Red	104521	104526	142179
Green	104520	104527	142181
Blue	104524	104528	142180
Yellow	104523	104529	104556

Online Video - How to Apply Pre-Spaced Tape
www.BradyID.com/toughstripe



Dots

	3.5" Dia. 350/roll
Black	104404
White	104405
Red	104400
Green	104401
Blue	104402
Yellow	104403



Arrows

	2" x 5" 100/pack	3" x 8" 100/pack	4" x 10" 100/pack
Black	104416	104422	104428
White	104417	104423	104429
Red	104412	104418	104424
Green	104413	104419	104425
Blue	104414	104420	104426
Yellow	104415	104421	104427



Footprints

	10' x 3.5" 5 right & 5 left/pack
Black	104410
White	104411
Red	104406
Green	104407
Blue	104408
Yellow	104409



Corner "L" Marks

	2" x 5" 20/pack	3" x 8" 20/pack	4" x 10" 20/pack
Black	104434	104446	104458
White	104435	104447	104459
Red	104430	104442	104454
Green	104431	104443	104455
Blue	104432	104444	104456
Yellow	104433	104445	104457



Center "+" Marks

	2" x 5" 20/pack	3" x 8" 20/pack	4" x 10" 20/pack
Black	104470	104476	104482
White	104471	104477	104483
Red	104466	104472	104478
Green	104467	104473	104479
Blue	104468	104474	104480
Yellow	104469	104475	104481



Divider "T" Marks

	2" x 5" 20/pack	3" x 8" 20/pack	4" x 10" 20/pack
Black	104440	104452	104464
White	104441	104453	104465
Red	104436	104448	104460
Green	104437	104449	104461
Blue	104438	104450	104462
Yellow	104439	104451	104463

Signs

Signs are an essential way to communicate with employees at your busy mining site. Keep your team visually informed with Brady's complete selection of fully-compliant signs to match any need.

Our signs feature bright colors, bold text, and intuitive pictograms to ensure the communication is highly visible and easily understood. We also have a material for every application and environment – whether used indoors or outdoors, or in mild or harsh conditions.

Some of our most popular sign materials include:

- **B-120** Premium Fiberglass is guaranteed for 15 years
- **B-555** Aluminum lasts up to 8 years outdoors
- **B-401** Plastic has a 1 to 2 year outdoor life
- **B-302** High Performance Polyester lasts up to 8 years outdoors



Admittance Signs



70220	10" x 14"	B-120
84175	7" x 10"	B-302
84176	10" x 14"	B-302
22177	7" x 10"	B-401
22178	10" x 14"	B-401
40741	7" x 10"	B-555
40742	10" x 14"	B-555



73451	10" x 14"	B-120
95401	7" x 10"	B-302
60571	10" x 14"	B-302
25804	10" x 14"	B-401
43381	10" x 14"	B-555



71565	7" x 10"	B-120
47005	10" x 14"	B-120
84876	7" x 10"	B-302
84877	10" x 14"	B-302
25532	7" x 10"	B-401
25533	10" x 14"	B-401
43109	7" x 10"	B-555
43110	10" x 14"	B-555



45470	7" x 10"	B-120
45471	10" x 14"	B-120
45472	14" x 20"	B-120
89174	3-1/4" x 4-1/2"	B-302
84082	3-1/2" x 5"	B-302
84083	7" x 10"	B-302
84084	10" x 14"	B-302
22103	7" x 10"	B-401
22104	10" x 14"	B-401
40667	7" x 10"	B-555
40668	10" x 14"	B-555

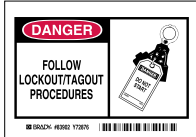


95356	7" x 10"	B-120
75478	14" x 20"	B-120
47008	10" x 14"	B-120
87759	3-1/2" x 5"	B-302
84095	7" x 10"	B-302
84096	10" x 14"	B-302
22111	7" x 10"	B-401
22112	10" x 14"	B-401
40675	7" x 10"	B-555
40676	10" x 14"	B-555

Alert Signs



62827	10" x 14"	B-120
83943	3-1/2" x 5"	B-302
83768	7" x 10"	B-302
21815	7" x 10"	B-401
26590	10" x 14"	B-401
46491	7" x 10"	B-555
46768	10" x 14"	B-555



62436	7" x 10"	B-120
83902	3-1/2" x 5"	B-302
83681	7" x 10"	B-302
21729	7" x 10"	B-401
26549	10" x 14"	B-401
46647	7" x 10"	B-555
46691	10" x 14"	B-555

ANSI Z535 Signs



45023	10" x 7"	B-120
45024	14" x 10"	B-120
45159	10" x 7"	B-302
45091	10" x 7"	B-401
45092	14" x 10"	B-401
49011	10" x 7"	B-555



44981	10" x 7"	B-120
44982	14" x 10"	B-120
45117	10" x 7"	B-302
45118	14" x 10"	B-302
45050	14" x 10"	B-401

First Aid Signs



47044	14" x 10"	B-120
85323	10" x 7"	B-302
85324	14" x 10"	B-302
22644	10" x 7"	B-401
22645	14" x 10"	B-401
41208	10" x 7"	B-555
41209	14" x 10"	B-555



75962	10" x 7"	B-120
75963	14" x 10"	B-120
85325	10" x 7"	B-302
85326	14" x 10"	B-302
22646	10" x 7"	B-401
22647	14" x 10"	B-401
41210	10" x 7"	B-555
41211	14" x 10"	B-555

Chemical & Hazardous Materials Signs



47206	10" x 14"	B-120
84327	10" x 14"	B-302
84326	7" x 10"	B-302
22295	10" x 14"	B-401
40859	10" x 14"	B-555
40858	7" x 10"	B-555



70240	10" x 14"	B-120
84352	10" x 14"	B-302
84351	7" x 10"	B-302
22312	10" x 14"	B-401
22311	7" x 10"	B-401
40876	10" x 14"	B-555



70266	10" x 14"	B-120
70267	14" x 20"	B-120
84376	10" x 14"	B-302
87763	3-1/2" x 5"	B-302
84375	7" x 10"	B-302
25429	10" x 14"	B-401
25428	7" x 10"	B-401
43006	10" x 14"	B-555



75639	10" x 14"	B-120
85168	10" x 14"	B-302
85167	7" x 10"	B-302
25655	10" x 14"	B-401
25654	7" x 10"	B-401
43232	10" x 14"	B-555
43231	7" x 10"	B-555



72230	10" x 14"	B-120
85176	10" x 14"	B-302
87764	3-1/2" x 5"	B-302
85175	7" x 10"	B-302
25661	10" x 14"	B-401
43238	10" x 14"	B-555
43237	7" x 10"	B-555



84320	10" x 14"	B-302
84319	7" x 10"	B-302
22289	10" x 14"	B-401
40853	10" x 14"	B-555
40852	7" x 10"	B-555

Confined Space Signs



47050	10" x 14"	B-120
47061	7" x 10"	B-120
84530	10" x 14"	B-302
87769	3-1/2" x 5"	B-302
84529	7" x 10"	B-302
22400	10" x 14"	B-401
40964	10" x 14"	B-555



84534	10" x 14"	B-302
87770	3-1/2" x 5"	B-302
84533	7" x 10"	B-302
22404	10" x 14"	B-401
22403	7" x 10"	B-401
40968	10" x 14"	B-555
40967	7" x 10"	B-555



74581	10" x 14"	B-120
87771	3-1/2" x 5"	B-302
84536	10" x 14"	B-302
84535	7" x 10"	B-302
22406	10" x 14"	B-401
40970	10" x 14"	B-555



47018	10" x 14"	B-120
75914	14" x 20"	B-120
47064	7" x 10"	B-120
84538	10" x 14"	B-302
87772	3-1/2" x 5"	B-302
84537	7" x 10"	B-302
22408	10" x 14"	B-401
22407	7" x 10"	B-401
40972	10" x 14"	B-555
40971	7" x 10"	B-555



73470	10" x 14"	B-120
84546	10" x 14"	B-302
84545	7" x 10"	B-302
22416	10" x 14"	B-401
22415	7" x 10"	B-401
40980	10" x 14"	B-555



82596	10" x 14"	B-302
82595	7" x 10"	B-302
20028	10" x 14"	B-401
20027	7" x 10"	B-401
49070	10" x 14"	B-555
49069	7" x 10"	B-555
60241	10" x 14"	B-120

Machine & Operational Signs



73009	10" x 14"	B-120
85920	10" x 14"	B-302
85919	7" x 10"	B-302
22946	10" x 14"	B-401
22945	7" x 10"	B-401
42469	10" x 14"	B-555
42468	7" x 10"	B-555



73052	14" x 20"	B-120
85924	10" x 14"	B-302
85923	7" x 10"	B-302
22950	10" x 14"	B-401
22949	7" x 10"	B-401
42473	10" x 14"	B-555
42472	7" x 10"	B-555



70315	7" x 10"	B-120
88288	7" x 10"	B-302
25045	10" x 14"	B-401
25044	7" x 10"	B-401
42622	10" x 14"	B-555
42621	7" x 10"	B-555



70340	10" x 14"	B-120
85990	10" x 14"	B-302
85989	7" x 10"	B-302
22978	10" x 14"	B-401
22977	7" x 10"	B-401
42501	10" x 14"	B-555
42500	7" x 10"	B-555



88124	10" x 14"	B-302
88123	7" x 10"	B-302
22996	10" x 14"	B-401
22995	7" x 10"	B-401
42519	10" x 14"	B-555
42518	7" x 10"	B-555



74270	10" x 14"	B-120
85859	10" x 14"	B-302
87790	3-1/2" x 5"	B-302
85858	7" x 10"	B-302
22918	10" x 14"	B-401
22917	7" x 10"	B-401
42441	10" x 14"	B-555
42440	7" x 10"	B-555

Exit & Directional Signs



70470	10" x 14"	B-120
85871	10" x 14"	B-302
85870	7" x 10"	B-302
22924	10" x 14"	B-401
22923	7" x 10"	B-401
42447	10" x 14"	B-555



88194	10" x 14"	B-302
88193	7" x 10"	B-302
23048	10" x 14"	B-401
23047	7" x 10"	B-401
42571	10" x 14"	B-555
42570	7" x 10"	B-555



47288	10" x 14"	B-120
84674	10" x 14"	B-302
84673	7" x 10"	B-302
22490	10" x 14"	B-401
22489	7" x 10"	B-401



84686	10" x 14"	B-302
84685	7" x 10"	B-302
22500	10" x 14"	B-401
22499	7" x 10"	B-401
41064	10" x 14"	B-555
41058	7" x 10"	B-555
41063	7" x 10"	B-555

Fall Protection Signs



74455	10" x 14"	B-120
85098	10" x 14"	B-302
87782	3-1/2" x 5"	B-302
85097	7" x 10"	B-302
25611	10" x 14"	B-401
25610	7" x 10"	B-401
43188	10" x 14"	B-555
43187	7" x 10"	B-555



74299	7" x 10"	B-120
85116	10" x 14"	B-302
85115	7" x 10"	B-302
25619	10" x 14"	B-401
25618	7" x 10"	B-401
43196	10" x 14"	B-555
43195	7" x 10"	B-555

Miscellaneous Signs



70442	10" x 14"	B-120
85645	10" x 14"	B-302
85644	7" x 10"	B-302
22803	10" x 14"	B-401
22802	7" x 10"	B-401
41367	10" x 14"	B-555
41366	7" x 10"	B-555



95500	10" x 14"	B-401
-------	-----------	-------



73440	10" x 14"	B-120
86034	10" x 14"	B-302
86033	7" x 10"	B-302
23216	10" x 14"	B-401
23215	7" x 10"	B-401
41890	10" x 14"	B-555
41889	7" x 10"	B-555



65571	10" x 7"	B-120
22909	10" x 7"	B-401
65570	14" x 10"	B-120
85848	10" x 7"	B-302
85849	14" x 10"	B-302
85846	5" x 3-1/2"	B-302
85847	7" x 5"	B-302
22910	14" x 10"	B-401
42432	10" x 7"	B-555
42433	14" x 10"	B-555

Regulations

The following MSHA regulations protect your employees:

- § 56.4101 Warning signs
- § 75.363 Hazardous conditions; posting, correcting and recording
- § 56.20011 & § 57.20011 Barricades and warning signs

Visit www.BradyID.com to view our full selection of signs.

Lean & Compliance Consulting Services



Visual Management Workshop

Brady's Visual Management Workshop is a hands-on learning experience that engages your team members in the visual transformation of your facility. Visual workshops teach your team how to reinforce standards, highlight abnormalities, and sustain improvements. Key benefits include:

- Increased efficiency and productivity
- Improved safety compliance
- Reduced maintenance costs, errors and downtime
- Engaged employees



Visual Lockout Procedures Service

This on-site service guarantees your mine has a program that complies with lockout regulations. Brady engineers will come to your facility and create visually-instructive, machine-specific procedures and place them directly onto your equipment. An effective lockout program can:

- Eliminate MSHA lockout fines
- Reduce worker compensation claims
- Significantly reduce insurance premiums
- And more!

Visit www.BradyID.com/services for more information.



For more information on
Brady's product offerings
visit www.BradyID.com

USA

Customer Service: 1-888-272-3946
Inside Sales: 1-888-311-0775
www.BradyID.com

Canada

Customer Service: 1-800-263-6179
www.BradyCanada.ca

Mexico

1-800-262-7777
Inside Sales: 1-800-262-7777 ext 177
www.BradyLatinAmerica.com

