

# Entertainment Products

 **JOHNS. HYATT**  
and associates inc

CUSTOM THEATRICAL SOLUTIONS

SALES • RENTALS • CONSULTING

[WWW.JSHAA.COM](http://WWW.JSHAA.COM)



Leviton brings innovative design and simplicity to the world of lighting control solutions with system design, product selection and service. The result—great aesthetics, flexibility and superior lighting design. Only Leviton integrates all your lighting needs into one cohesive system for lighting control that does exactly what you want it to do.

**PRODUCTS FOR EVERY LIGHTING CONTROL APPLICATION**

Whether your venue is a place to educate, entertain, worship, broadcast or hold conventions, Leviton has proven lighting solutions. Our team of experienced in-house engineering and application specialists support rapid product development, offering our customers a top-quality selection of easy-to-install lighting controls.

**INNOVATIVE TECHNOLOGY**

Leviton’s innovative controls combine durable construction, universal ease-of-use features, and overall superior performance. For the design professional, this means more options for delivering the ideal energy efficient control solution for each application.

**WORLD-CLASS QUALITY STANDARDS**

Leviton continuously sets new energy and quality standards in the lighting industry. Backed by a longstanding tradition in quality and ISO 9001 certification, Leviton applies the highest quality standards to the development and manufacture of all our lighting products. Our in-house labs test all products to ensure they meet or exceed the most rigorous industry standards to deliver reliability and performance.

**SUPERIOR VALUE**

Your customers deserve products and systems that delivery reliability energy efficiency, convenience and top performance. Leviton architectural lighting control products offer these benefits plus ease of use, elegant styling and exceptionally long service life.

**WE GET IT RIGHT**

Leviton’s team of customer service representatives anticipate and respond to your needs. Whether you have a technical question or complex shipping instructions, our people will get it right the first time.

For more than 100 years, your satisfaction has been our primary mission ... and cutting-edge lighting has been our passion.

Entertainment Lighting Controls .....4-11

Architectural Lighting Controls..... 12-27

Systems Management ..... 28-31

Dimming ..... 32-43

Fixtures..... 44-49

Distribution Equipment ..... 50

Connectors .....51



David L. Lawrence Convention Center, Architect: Rafael Viñoly Architects, Lighting Design: LAM Partners Pittsburgh, Pennsylvania

## 3000

The 3000 series of consoles is the perfect economical choice in lighting control product when a basic feature set is required. Designed to be easy to operate—the most often used features are documented on the bottom of the console with connector pin outs permanently screened next to the connector. When basic economical control is required, the 3000 series is the perfect choice.

- DMX512 output
- 4 or 8 dimming control channels
- 4 or 8 recordable scene memory
- Chaser functions:
  - (2) selectable chases
  - Speed control
  - Direction control
  - Audio input
- Bump buttons for each channel or scene
- Master output fader



**3004** *n3004-00d*

- 4 Control Channels
- 4 Scenes

**3008** *n3008-00d*

- 8 Control Channels
- 8 Scenes

## MC 7000

The MC 7000 series lighting consoles are simple and flexible with three operating modes. The MC 7000 series is particularly well-suited to small theaters, stage performances and rental inventories. These products are so easy to program and operate, the instructions are printed right on the consoles.

- Individual Control Channels
- 2-Scene or 1-Scene (wide mode)
- User Programmable Memory Scenes
- User Programmable Chase Functions
- Chase Rate Control (tap button)
- Grand Master
- Blackout Function
- NSI Micro-Plex Control Signal
- DMX512 Digital Control on all units



**MC 7008** *n7008-d00*

- 8 Individual Control Channels,
- 8 Memory Scenes

**MC 7016** *n7016-d00*

- 16 Individual Control Channels,
- 16 Memory Scenes

**MC 7024** *n7024-d00*

- 24 Individual Control Channels,
- 24 Memory Scenes

## MC 7500

Catering to the advanced lighting designer, the 7500 Series features operational modes such as cue stacking, level sensitive chasing and memory scene capability. The encoder wheel and LCD readout make onboard editing quick and easy.

- 2-Scene or 1-Scene Preset or (wide mode)
- Dual Split Dipless Manual Crossfaders
- Soft patching
- Auto Faders
- Live or Blind Mode
- Audio Sync to Chase Effects Mode
- Cue Stacking
- NSI Microplex Control Signal
- DMX512 Digital Control on all units
- MIDI In/Out/Through
- 512 Memory Scenes
- 16/24/32 Chase Effects



**MC 7516** *n7516-000*

- 16/32 Individual Control Channels
- 256 Memory Scenes
- w/37-pin 0-10VDC Output *n7516-0a1*

**MC 7524** *n7524-000*

- 24/48 Individual Control Channels
- 384 Memory Scenes
- w/37-pin 0-10VDC Output *n7524-0a1*
- w/(2) 37-pin 0-10VDC Output *n7516-0a1*

**MC 7532** *n7532-000*

- 32/64 Individual Control Channels
- 512 Memory Scenes
- w/37-pin 0-10VDC Output *n7532-0a1*
- w/(2) 37-pin 0-10VDC Output *n7532-0a2*

## 1000

In its simplest application, this product can be used for recall of recorded scenes. Channel levels are set via the sub-masters in channel mode, or direct via the keypad. Additionally, scenes can record the channel levels per the incoming DMX control signal. In a more complex application, the 1000 series console can be used as both a scene controller and a backup console, offering immediate recall of a stored scene upon loss of DMX input control signal.

- (6) Sub-masters & (1) Master Fader
- (40) Scene Memory
- Scene Memories can be assigned to Sub-Masters
- Access to all (512) DMX control channels from keypad
- Backup Console Mode - Scene fade and activation upon sudden loss of incoming DMX signal
- Simple to use and easy to carry
- Silver finish
- Operates from included re-chargeable battery or from included power supply
- Supports DMX Snapshot
- 19" EIA Rack mount option
- LCD Power Save mode



**1000** *n1000-006*

- 19" EIA Rack Mount Ears for 1000 Series *n1rkt-006*

## PICCOLO

Functions easily as a standard manual/memory board with traditional channel capacities and simple user interface components. Plus, offers real cue-list support, full cue based attributes, additional effect combination and basic automated device support and the ability to add a monitor.

- 12/48 console - 2 rows of 12 faders support 48 maximum channels.
- Three operating modes - single scene, two scene, sub-master "theater" mode. Clear indication of operating mode and masters - multi-purpose. 10 pages.
- Cues - 10,000 x (8) attributes allows complex cue timings and relationships.
- 99 cues, group, or channel effects, 6 attributes, can be played back from masters for a wide variety of effects and effect options.
- All programming and configuration can be performed from on-board 240 x 64 display. Monitor not required.
- Optional monitor lets you view more show information at once.
- Full keypad for rapid data entry support.
- Track functions with Alpha-numeric labeled cues, masters, groups, effects, etc.
- Off-line editor for pre-programming and configuration.
- Wireless remote.
- 32 attribute channels for automated devices. Full access to all channels via faders.
- Ethernet supported for future proof and easy DMX distribution
- Capture support - both off and on-line visualization.
- 10 Sub-Master Pages
- 32 Attributes
- 512 DMX Channels
- 10,000 (0.0-999.9) Cues
- 99 Effects
- Unlimited Max Shows
- 1 DMX Output
- 1 DMX Input



**12/48\*** *ppico-012*

- 48 Channels
- 12 Subs
- 24 Handles
- w/Video Option\*

**24/96\*** *ppico-024*

- 96 Channels
- 24 Subs
- 48 Handles
- w/Video Option\*

**36/144\*** *ppico-036*

- 144 Channels
- 36 Subs
- 72 Handles
- w/Video Option\*

**48/192\*** *ppico-048*

- 192 Channels
- 48 Subs
- 96 Handles
- w/Video Option\*

**Accessories** *ppico-vid*

- Video option for installation *7-2052*
- Work light *tamon-f17*
- 17" LCD monitor *tamdc-f17*
- Dustcover for 19" LCD monitor *tamdc-f19*
- 19" LCD Flat Screen Monitor *tamon-f19*

\* Power supply & dustcover included.

## MC 1616

The MC 1616 lighting console delivers complete flexibility in entertainment lighting applications with 16 individual control channels and 16 pattern memory buttons. Any of 16 memories are programmable for chase effects or static scenes.

- 16 Individual Control Channels
- Grand Master
- 16 User Programmable Patterns or Static Scenes
- 400 Step Pattern Memory
- Audio Sync
- Tap Sync Pattern Rate Control
- NSI 128 Channel Microplex Optional DMX512 Digital Control
- MIDI In/Out/Through

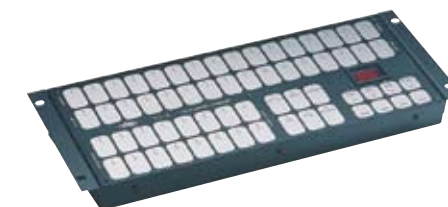


*n1616-d00*

## TLC 16

The unique TLC16 touch pad console offers retro styling yet full memory features with the basic compliment of effects.

- Touch Pad Control Panel
- Add Button for Pile-On of Patterns
- Non-Volatile Memory
- MIDI In/Out/Through
- NSI 128 Channel Micro-Plex
- DMX512 Digital Control
- Blackout Control
- 16 Individual Control Channels
- 16 Memory Sequence Programmable
- Touch Control Panels with Independent Channel Bump and Latch Controls



*ntc16-000*

## MC 6300

Leviton's MC 6300 memory lighting console offers an excellent entry point to multiple memory/preset operation yet still allowing the flexibility of constant manual fade time adjustment.

- Audio Sync to Chase or Channel Intensity
- MIDI In/Out/Through
- 128 User-Programmable Memory Scenes
- 32-step Chase Effects
- 128 Channel Softpatch Table
- NSI 128 Channel Microplex
- Manual Scene Preset with 16 Individual Slide Controls
- Chase Rate Control



*n6300-d00*

## FOOT CONTROLLERS

When hand's on isn't an option, Leviton's Foot Controllers offer hands-free operation to lighting control - fully user programmable scenes and effects are easily created or changed at the touch of a button.

- Push Button Scene Crossfade and Fadeout Controls
- Multimode Chase Includes Normal, Scene and Program Chase Effects
- Scene Freeze for Pile-On Effects
- Audio Synchronization
- NSI 128 Channel Micro-Plex
- Variable Chase Rate
- LED Indicators for Scene Select, Chase, Audio and Freeze Effects
- Blackout Control



**NCM 508** *n0508-000*

- 8 Channels
- 4 Programmable Scenes
- 1 Manual Scene

**NCM 5128** *n5128-000*

- 16 Channels
- 128 Programmable Scenes
- Non-Volatile EEPROM Memory

## INNOVATOR

Precise lighting control can be the difference between a good show and a spectacular event. The Innovator series of lighting consoles gives you the powerful unification of advanced theatrical functions with sophisticated, intelligent control for capabilities never before available at such an economical price. Just as the graphical user interface revolutionized computers, so the Innovator series revolutionizes the lighting industry. Easy-to-use display and control features seamlessly link intelligent and standard light fixtures to help you create any look you desire.

- Dual independent auto crossfaders address discrete cue lists
- Up to 128 simultaneous crossfades may be executed
- 256x64 pixel liquid crystal display with CFL back light provides intelligent device attribute values
- Supports up to 256 automated devices (512 channels total of intelligent light attributes)
- Ethernet based Colornet® standard on all consoles provides DMX512 distribution, remote video and networked Hand Held Remote. (Innovator only)
- Up to 2,000 Macros
- 24 Submasters with up to 8 Pages
- 7 Encoder Wheels for Individual Trait Control of Motorized Devices for Pan, Tilt and Level Control
- Trackball
- Stage, Preview, Device, Cue Sheet, Track Sheet, Playback, Patch and Setup Display Screens
- Cue Numbering from .1 to 999.9 via Numeric Keypad
- Link to Cue or Macro
- Selective Cue Recording
- Multi-Part Cues
- Split Up/Down Fade Times
- Overlapping Inhibitive or Pile-On Functions
- Programmable Up/Dwell/Down Times
- Master Fader
- Blackout Button
- Hold/Back Buttons
- Optional 2nd Video Card
- 384 Stage Lighting Channels



**Innovator 24/48** *ctp-7-0048*  
 - 24 channel two-scene operation  
 - 48 channel single scene

**Innovator 48/96** *ctp-7-0096*  
 - 48 channel two-scene operation  
 - 96 channel single scene

**Innovator 72/144** *ctp-7-0144*  
 - 72 channel two-scene operation  
 - 144 channel single scene

**Innovator 600** *ctp-7-0600*  
 - 600 stage lighting channels  
 - 512 intelligent lighting channels

**MC 24/48** *n2448-000*  
 - No network support  
 - 600 max cues  
 - 1024 max dimmers  
 - 24 channel two-scene operation  
 - 48 channel single scene  
 - w/Video Option *n2448-00v*

## 8700

The 8700 Series lighting control consoles are everything the sophisticated lighting professional needs with enhanced features which make creating your design, programming your show, and executing your masterpiece easy and rewarding. The console delivers all the power you need offering features like a slide out key board, touch screen and outputs for all your possible connections. Rugged and available in multiple models and capacities, the 8700 series are the consoles for your leading edge creation.



- **24 or 48 Submasters** — depending on model. Submasters can activate a scene, cue list, effect, effect rate, attribute or channel
- **Conventional Lighting** — full support for conventional lighting and traditional cue list control
- **Automated Devices** — position control via trackball, attribute control via touchscreen (GX series) or encoders (all models)
- **Cues** — support for up to 20,000 cues, each with up to nine parts. Jumps, loops, follows, split fade times and more
- **Visualization & Design** — visualization and design assistance provided with the included Capture software package (PC required)
- **Full Tracking Backup** — full tracking backup capability both to secondary console or connected PC
- **Effects Generation** — effects for rapid creation of chases, patterns, shapes, operating modes offering easy live modification
- **Capacities** — 20,000 cues, 2000 groups, 2000 macros, 2000 effects, 2000 pages, 99 libraries
- **Response Curves** — custom curves for most channel parameters
- **Off & On Line Editing** — from the comfort of your PC
- **Touring models** — built-in monitor and attaché style case

	Part Number	Sub-Masters	Channels	DMX Outputs	VGA Outputs
<b>GX Series with integral touch screen and keyboard</b>	p8724-gx	24	2048	4	4
	p8748-gx	48			
	p8724-gxt (touring)	24			
<b>GS Series with integral keyboard</b>	p8724-gs	24	1024	2	2
	p8748-gs	48			
	p8724-gst (touring)	24			
<b>GL Series</b>	p8724-gl p8724-glt (touring)	24	512	1	1

## MLC 16

The MLC 16 accommodates any DMX512-capable device in the world. This versatility means that in addition to moving lights, you can easily control dimmers, relays and fog machines.

- Controls 16 Intelligent Devices
- 512 Control Channels
- Up to 800 Step Memory
- 96 Total Programmable Memory Patterns
- 24 Scene Access Buttons
- Two Line by 40 Character Liquid Crystal Display
- 4 Pages of Pattern Memory
- Control Joystick
- Addresses Multiple Personalities at Once
- MIDI with Editing Capability
- 3.5" Disk Drive
- DMX512 Digital Control (5-pin XLR)
- RS232 Input/Output Port
- DMX input
- 24 Shows



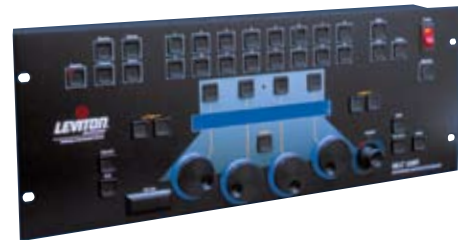
*nmlc1-6do*



## MLC 128R

Onboard joystick and encoder wheels make show design a snap with the ingeniously organized MLC 128R's front panel and pre-established library of lighting fixtures.

- Control up to 128 Individual Intelligent Devices
- 512 Control Channels
- Extensive Memory Capacity that Provides up to 256 Device Patterns and 256 Shows
- Pre-focus Memories that Provide Fast Standard Show Set-up Times with Minimal Editing
- Control of Similar Traits in Multiple Devices
- Two-line by 40-character LCD Display
- Four Encoder Wheels for Fast-Action Access and Easy Modification of Device Trait information
- Joystick Provides Real Time Pan and Tilt Control
- Audio Synchronization for Triggering from a Remote Line-level Audio Source such as a Compact Disc Player or Audio Mixing Console
- DMX512 Output (3 pin XLR)
- Micro-Plex Output (3 pin XLR)
- MIDI In/Out/Through
- Up to 1,024 User Programmable Scenes
- Back up via RS232 Port



*nmlc1-28r*

## AXIS

**POWER. VERSATILITY. CREATIVITY.** Leviton Axis™ Lighting Controller makes show production faster and easier than ever before, with point-and-click advanced programming and effects generation features built right in. Shows that used to take hours of skilled programming time now come together in just minutes, allowing you to produce more dazzling performances than you ever thought possible.

- 3D Visualizer
- Dynamic shape generator with advanced StepShift technology
- Multiple masters
- Preset Palettes
- Area limits feature
- Live control
- One-touch synchronization
- SOLO mode
- DMX Input



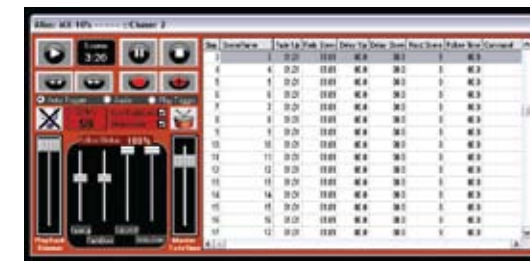
Palette View



Playback View



Shortcuts



Advanced Cue List Control

### AXIS Basic

*axkbo-x1d*

- 512 Channels
- 16 Playbacks
- Expansion for multiple identical outputs

### AXIS Pro

*axkpo-x1d*

- 512 Channels per Interface
- DMX Input
- Time Clock
- Scheduler
- Unlimited Playbacks
- RF Remote Support
- DMX Record
- Expansions used for additional 512 channels or multiple identical outputs

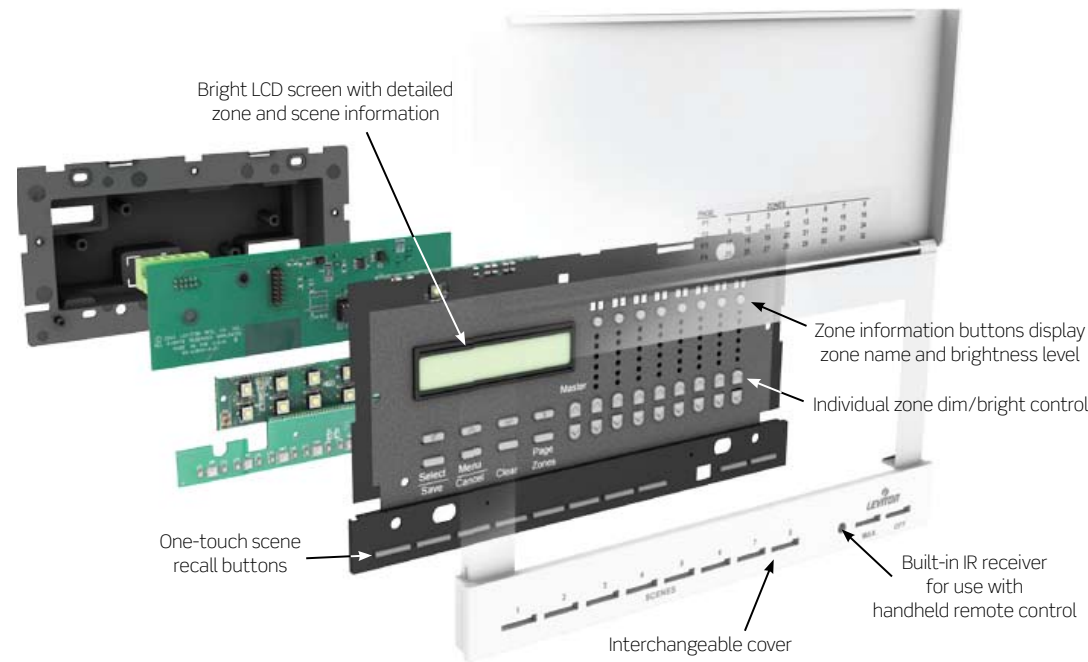
### AXIS Expansion Kit

*axkeo-x1d*

- 512 Additional DMX Channels
- Requires (1) Pro Kit per System

## DIMENSIONS® D4000 ARCHITECTURAL LIGHTING CONTROLS

The Dimensions D4000 system combines ease of operation, configuration, and installation, with a wide range of entry stations and accessories to provide a powerful and flexible lighting control solution. The product offering includes scalable products for every need from stand alone systems through complete network environments. The D4000 system is sophistication made simple, without the guesswork.



- Up to (32) Zones/Channels of Control
- Up to (6) Internal Network Dimmers
  - 120V
    - Max 1,000W per Dimmer
    - Max 1,920W per unit (continuous)
    - Max 1,200W per side
  - 230V
    - Max 800W per Dimmer
    - Max 2,420W per unit (continuous)
    - Max 1,200W per side
- Load Types: Incandescent, Advance Mark 10®, Lutron Tu-Wire®, Magnetic Low Voltage\*
- (16 + 2) Scene Memory
- Fade Times for each scene
- Room Partition Control
- Remote Dimmer Configuration

- Lockout
- Sequencer
- Complete multi-event scheduler
- Integrated astronomical time clock
- Individual raise/lower buttons for each zone
- Master raise/lower buttons for changing all zone light levels at the same time
- LED light-level indicators
- Built-in IR Receiver
- Mounts in 4-gang gangbox with 4-gang device cover

### APPLICATIONS

- Ballrooms • Cafeterias • Auditoriums • Lecture Halls
- Conference Rooms • Hotel Suites • Restaurants
- Museums • Houses of Worship

\*Mark 10® is a registered trademark of Advance Transformer Company. Lutron Tu-Wire® is a registered trademark of Lutron Electronics, Inc.

## STAND ALONE SYSTEMS

- Compatible with Entry Stations
- Compatible with Room Combine stations
- Used when integration with other products is not required
- (4) or (6) Channels & Dimmers
- UL Listed
- All units 50/60Hz



D4106 (D4104 similar)

- 120V, 4 Channels/Dimmers,
- 230V, 4 Channels/Dimmers
- 120V, 6 Channels/Dimmers
- 230V, 6 Channels/Dimmers

d4104-1lw  
d4104-2lw  
d4106-1lw  
d4106-2lw

## NETWORK CONTROLLER W/DIMMERS

- Full network and device compatibility
- (32) Control Channels
- Used to control other dimmers or relays on the Luma-Net network
- (6) Internal Dimmers
  - Dimmers assignable to any network channel
  - Dimmers controllable by local controller and any network control device
- UL Listed
- All units 50/60Hz



Shown with black/white cover

- 120V, 6 Channels/Dimmers
- 230V, 6 Channels/Dimmers

d4206-1lw  
d4206-2lw

## NETWORK CONTROLLER

- Full network compatibility
- (32) Control Channels
- Used to control other dimmers or relays on the Luma-Net network



D4200 (D4206 similar)

- Network Controller

d4200-00w

## REMOTE DIMMER

- Full network compatibility
- Controllable by any network controller
- Start channel & Network ID (address) set from front panel
- Full configuration from any connected D4200 or D4206
- (6) Internal Dimmers
  - Dimmers assignable to any network channel
  - Dimmers controllable by local controller and any network control device
- UL Listed
- All units 50/60Hz



D4006

- 120V, 6 Channels/Dimmers
- 230V, 6 Channels/Dimmers

d4006-1lw  
d4006-2lw

## REMOTE STATIONS

The Dimensions D4000 line includes Remote Entrance and Command stations that extend many of the functions of a D4000 unit to remote locations. Several remote stations can be combined in one location to provide the exact control functions required. Rooms with multiple entrances may use different remote stations at each entry, providing control of the functions that are best suited to that location. Remote location control can be as complex or as simple as needed, depending on the remote stations selected.

### Entrance Stations

- Connect to controller via Luma-Net network
- Used to remotely control scenes and zones on a master station
- Available in 11 configurations - most have built-in IR receiver for use with handheld remote control
- Backlighting and tactile clicking indicate scene selection
- Wired via Luma-Net to D4200 Controller
- Mount in single-gang deep switchbox
- Attractive styling accepts Decora wallplates or Decora Plus screwless wallplates

- Scene 1, OFF
- Master Raise, Master Lower
- MAX, OFF
- MAX, Scene 1, OFF
- MAX, Master Raise, Master Lower, OFF
- Scene 1 - 4, OFF
- MAX, Master Raise, Scene 1 Master Lower, OFF
- Scene 1 - 4, MAX, Master Raise, Master Lower, OFF
- Scene 9 - 16
- Scene 1 - 8, MAX, OFF
- Scene 9 - 16, Master Raise, Master Lower

- d42p1-00w*
- d42rl-00w*
- d42mo-00w*
- d42p1-m0w*
- d42mo-rlw*
- d42p4-00w*
- d42p1-rlw*
- d42p4-rlw*
- d42p9-16w*
- d42p8-00w*
- d53p9-rlw*

### Command Stations

- Connect to controller via Luma-Net network
- Used to execute commands on a master station
- Available in 4 configurations - most have built-in IR receiver for use with handheld remote control
- Backlighting and tactile clicking indicate scene selection
- Wired via Luma-Net to D4200 Controller
- Mount in single-gang deep switchbox
- Attractive styling accepts Decora wallplates or Decora Plus screwless wallplates

- Sequencer/ON-OFF - starts or stops the sequence
- Event Timer/ON-OFF - starts or stops the event
- Link - joins or separates the controls on 2 adjacent rooms that have a movable partition between them
- Lock Station - locks or unlocks a control station at a remote location

- d42sq-00w*
- d42et-00w*
- d42li-nkw*
- d42lo-ckw*



Entrance Stations



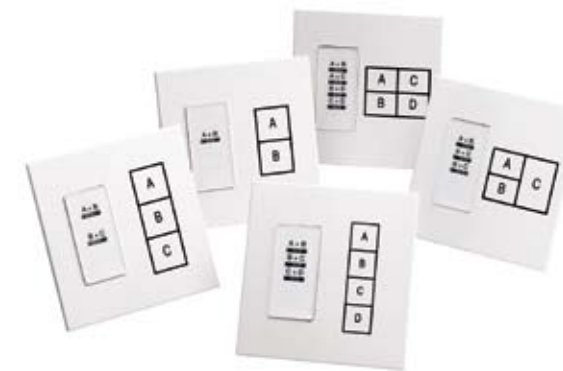
Command Stations

## ROOM COMBINE STATIONS

Room Combine stations coordinate lighting in up to four rooms with up to four movable walls. Five different models address common room configurations, and each feature an easy-to-understand graphic of the room layout. Each button is clearly labeled with its room combination function, and illuminates when the rooms are combined. Pressing the button again returns the rooms to independent operation and the button is no longer illuminated, confirming that the spaces are no longer joined.

- Connect to controller via Luma-Net network
- Requires (1) Master station in each room, addressed 10 for room 1, 20 for room 2, etc.
- Other room combine options available, contact your local Leviton sales agent for more information
- Accommodates room partitions by combining and separating lighting controls
- Wired via Luma-Net to D4200 Controller
- Minimal programming required
- Comes with snap-on Monet-style wallplate with silk-screened room configuration
- Customizable
- Only 1-Gang Device Backbox required

- Combines 2 rooms with 1 movable wall *d42cs-01w*
- Combines 3 rooms with 2 movable walls *d42cs-02w*
- Combines 3 rooms with 3 movable walls *d42cs-3aw*
- Combines 4 rooms with 3 movable walls *d42cs-03w*
- Combines 4 rooms with 4 movable walls *d42cs-04w*



Room Combine Stations

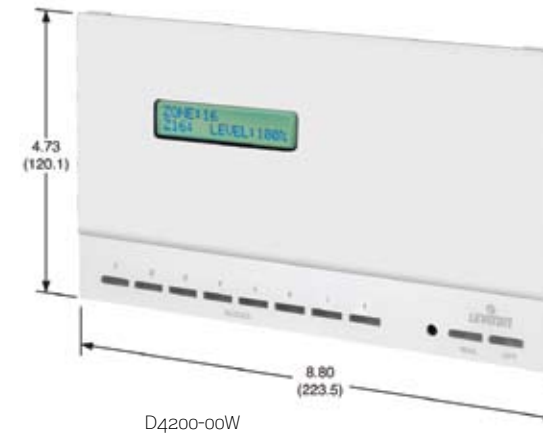


PRODUCT COMPATIBILITY CHART - PRODUCTS BEING CONTROLLED

	D4200 Entrance Stations	D4200 Partition Stations	iSeries e a-2000 MDS	Z-MAX Network Panels	NPC	D4104/D4106	D4200	D4206	D4006	Closure Input/Output	AV
<b>D4104/D4106</b>	Yes	Yes	-	-	-	-	-	-	-	Yes	Yes
<b>D4200</b>	Yes	Yes	Yes	Yes	Yes	-	-	Yes	Yes	Yes	Yes
<b>D4206</b>	Yes	Yes	Yes	Yes	Yes	Yes	-	Yes	Yes	Yes	Yes
<b>D8000</b>	-	-	Yes	Yes	Yes	Yes	-	Yes	Yes	Yes	Yes
<b>Luma-Graphics</b>	-	-	Yes	Yes	Yes	Yes	-	Yes	Yes	Yes	Yes

CONTROLLERS

The Dimensions D4000 line puts total lighting control at your fingertips. This single panel can create and save lighting scenes, switch lights and scenes instantly or with gradual fades, and provide complete control of your lighting applications.



**Standard Doors**

- Cover: White Door & White Frame
- Cover: Ivory Door & Ivory Frame
- Cover: Almond Door & Almond Frame
- Cover: Grey Door & Grey Frame
- Cover: Black Door & Black Frame
- Cover: Smoke Door & White Frame
- Cover: Light Almond Door & Light Almond Frame
- Cover: Smoke Door & Black Frame

- d32ck-0ww*
- d32ck-0ii*
- d32ck-0aa*
- d32ck-0gg*
- d32ck-0ee*
- d32ck-0sw*
- d32ck-0at*
- d32ck-0se*

**Doors with LCD Readout Hole**

- Cover: White Door & White Frame
- Cover: Ivory Door & Ivory Frame
- Cover: Almond Door & Almond Frame
- Cover: Grey Door & Grey Frame
- Cover: Black Door & Black Frame
- Cover: Smoke Door & White Frame
- Cover: Light Almond Door & Light Almond Frame
- Cover: Smoke Door & Black Frame

- d32ck-hww*
- d32ck-hii*
- d32ck-haa*
- d32ck-hgg*
- d32ck-hee*
- d32ck-hsw*
- d32ck-hat*
- d32ck-hse*

**White Custom Label**

- White Conversion Kit with 1-Button Switch
- White Conversion Kit with 2-Button Switch
- White Conversion Kit with 3-Button Switch
- White Conversion Kit with 4-Button Switch
- White Conversion Kit with 6-Button Switch
- White Conversion Kit with 8-Button Switch
- White Conversion Kit with 10-Button Switch

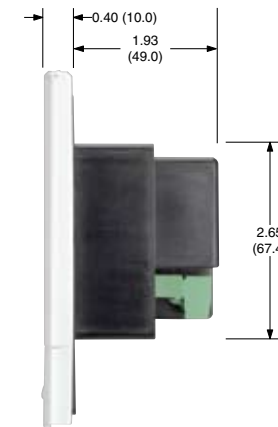
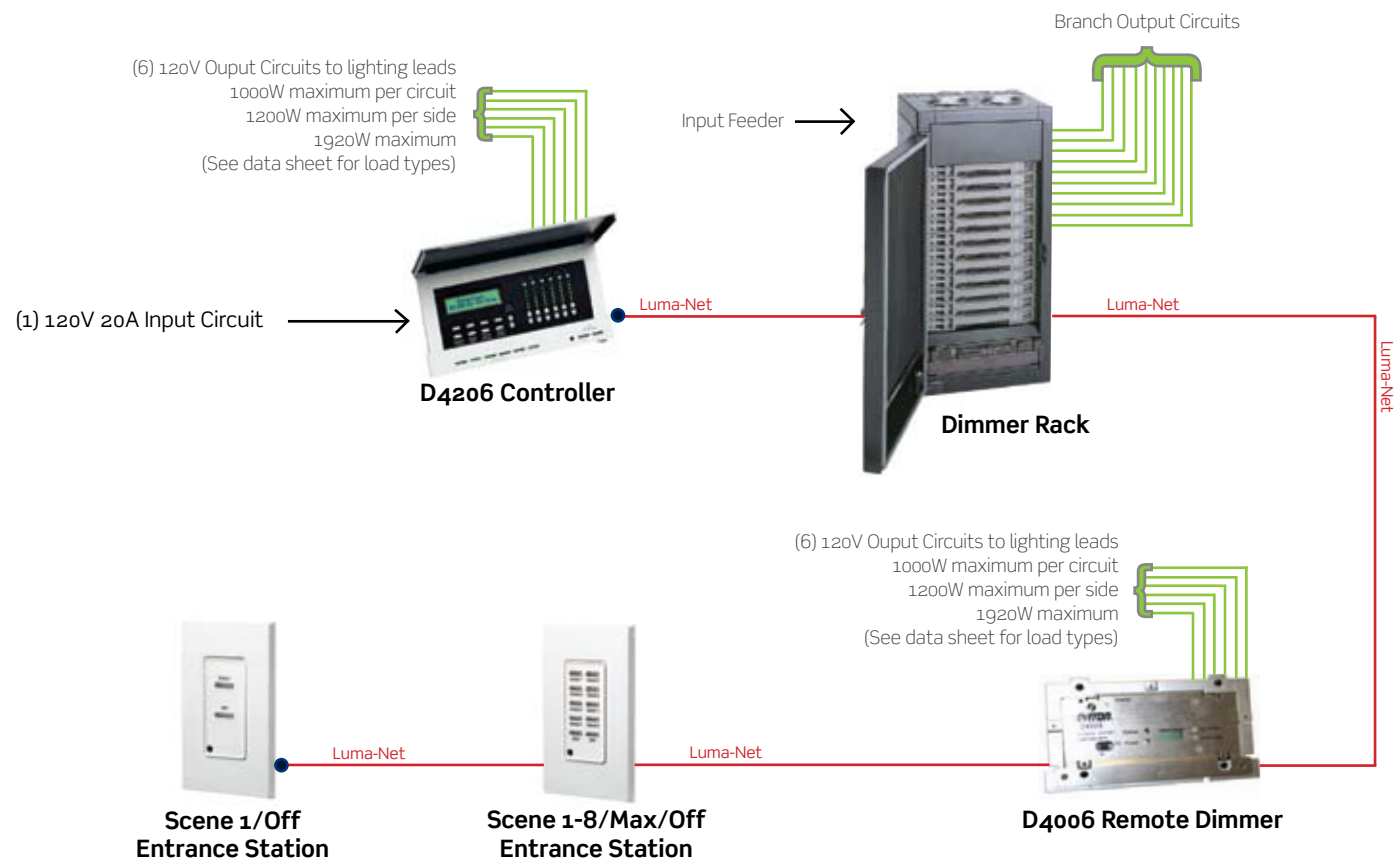
- d42cl-01w*
- d42cl-02w*
- d42cl-03w*
- d42cl-04w*
- d42cl-06w*
- d42cl-08w*
- d42cl-10w*

**Accessories**

- Infrared Remote Control, Scenes 1-4, Raise, Lower, Max & Off
- Infrared Remote Control, Scenes 1-8, Raise, Lower, Max & Off
- Infrared Remote Control, Scenes 1-16, Raise, Lower, Max & Off
- 4-Gang Gang Box
- 4-Gang Raised Device Wall Plate
- 500 ft. Spool of Belden #1502R for Luma-Net Wire Runs

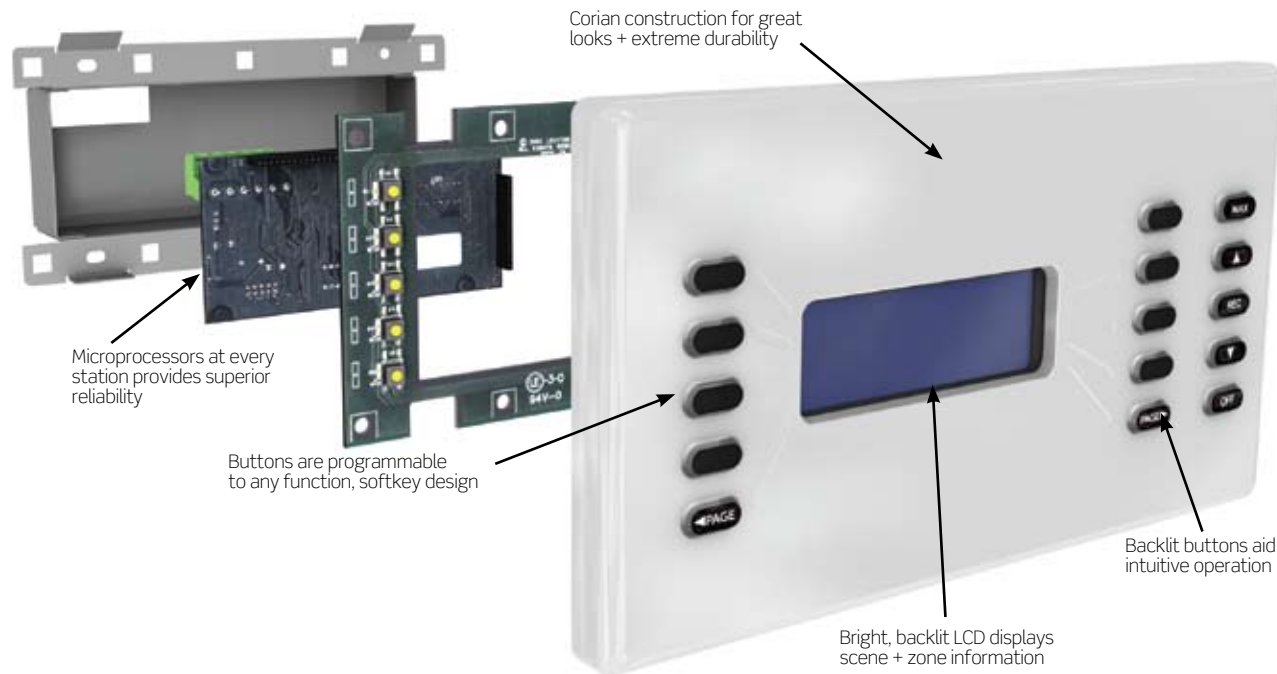
- d42ir-04l*
- d42ir-08l*
- d42ir-16l*
- bbg04-000*
- wpg04-d00*
- wirln-500*

D4206 TYPICAL SYSTEM



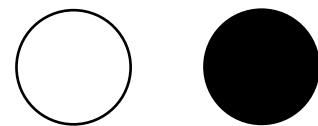
## DIMENSIONS® D8000 ARCHITECTURAL LIGHTING CONTROL SYSTEM

Dimensions® D8000 is an advanced line of lighting controls with distributed processing and network topology that brings the power, flexibility and reliability of networked computing to the lighting realm. A complete D8000 system may include LCD, pushbutton and slider stations; theatrical lighting consoles; dimming racks; relay cabinets; photocells; and occupancy sensors. The D8000 can accommodate large-scale, complex projects that integrate theatrical, architectural and energy management lighting control systems, as well as small applications that may benefit from its intuitive operations, flexibility and design-friendly aesthetics.



- LCD station comes in wall-mount and portable console models
- Programmable functions include: fade-to level and rate, personality change, scene change, partitioning, scene record mode, group raise/lower, maximum bright, and lockout
- Optional handheld remote control can be used with most stations
- Networks with up to 32,640 stations (127 per sub-network) over a Luma-Net® network
- Controls up to 2,048 zones per network
- Interfaces with HVAC, emergency, time clock, and load shed auxiliary systems
- Stations retain programming during power outages
- All wall stations fit in 3.5 in. deep, 4-gang wall box
- Optional customized faceplate including full range of Corian colors, engraving, and fabrication from alternative materials
- Optional custom button legends

### Available Colors



Glacier White Nocturne Black

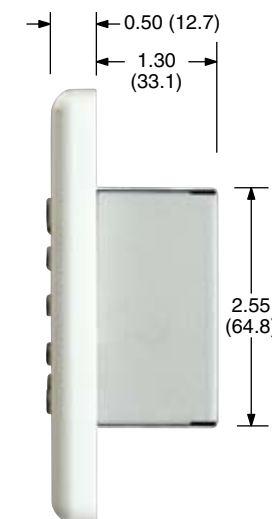
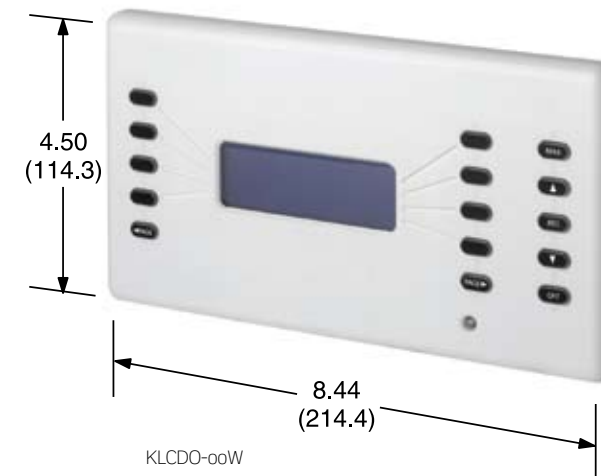
Additional Corian colors (and other materials) are available per special order.

Note: Dimensions in parenthesis are millimeters; all other dimensions are in inches.

## D8000 LCD WALL STATIONS

This advanced lighting control station is part of a highly scalable system that is suited not only to sophisticated, large-scale commercial applications but also to single-station installations. The station comes in two versions: one that sits on a tabletop and the other for wall mounting. The D8000 LCD Station features menus for easy programming and lighting control, an IR receiver for use with a handheld remote control, and a comprehensive suite of functionality including event scheduling, partitioning and networkability.

- All buttons are programmable and can execute any system function
- Buttons are mechanically-captured to prevent vandalism
- Multiple levels of passwords and a lock-out feature prevent unwanted changes
- Programming via LumaEdit™ (for system setup)
- Built-in IR receiver enables station to be accessed via handheld remote



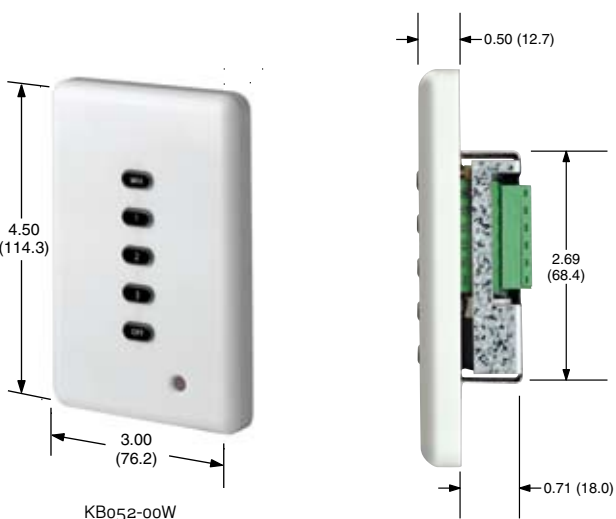
- With standard buttons *klcd0-00x*
- With custom buttons *klcd0-00x*
- Portable Console with standard buttons *klcdp-00x*
- Portable Console with custom buttons *klcdp-00x*

\* Add letter to end of catalog number suffix as follows for color selection: Corian Glacier White (W), Corian Nocturne Black (B).

For a custom Corian color or otherwise customized faceplate, contact your Leviton sales representative.

## D8000 PUSH BUTTON STATIONS

- Six different single-gang stations in 1-, 2-, 3-, 5-, 10- and 15-button configurations
- All buttons are programmable and can execute any system function
- Buttons are mechanically-captured to prevent vandalism
- Stations with raise/lower feature enable scene light level adjustment without changing programmed preset levels
- Programming via LumaEdit™ (for system setup)
- Built-in IR receiver enables station to be accessed via handheld remote



### 1-Button Pushbutton Station\*

- Blank *kb010-00x*
- MAX *kb011-00x*
- PRESET *kb012-00x*
- ON *kb013-00x*
- PANIC *kb014-00x*
- Custom *kb01c-00x*

### 2-Button Pushbutton Station\*

- Blank *kb020-00x*
- MAX, OFF *kb021-00x*
- PRESET, OFF *kb022-00x*
- Raise, Lower *kb023-00x*
- ON, OFF *kb024-00x*
- Custom *kb02c-00x*

### 3-Button Pushbutton Station\*

- Blank *kb030-00x*
- Raise, Lower, OFF *kb031-00x*
- 1, 2, OFF *kb032-00x*
- Custom *kb03c-00x*

### 5-Button Pushbutton Station\*

- Blank *kb050-00x*
- 1 - 4, OFF *kb051-00x*
- MAX, 1 - 3, OFF *kb052-00x*
- Custom *kb05c-00x*

### 10-Button Pushbutton Station\*

- Blank *kb100-00x*
- 1 - 8, MAX, OFF *kb101-00x*
- 1 - 5, MAX, Raise, RECOrd, Lower, OFF *kb102-00x*
- Custom *kb10c-00x*

### 15-Button Pushbutton Station\*

- Blank *kb150-00x*
- 1 - 12, MAX, WORK, OFF *kb151-00x*
- 1 - 10, MAX, Raise, RECOrd, Lower, OFF *kb152-00x*
- Custom *kb15c-00x*

\*Add letter to end of catalog number suffix as follows for color selection: Corian Glacier White (W) or Corian Nocturne Black (B).

For custom button legend selection, add "C" before the color code.

For a custom Corian color or otherwise customized face-plate, contact your local Leviton sales representative.

## D8000 DIGITAL SLIDER STATIONS

- 6-button configurations provide 3-scene recall, manual override, maximum brightness, and off
- 11-button configurations provide 5-scene recall, manual override, multiple scene record modes, maximum brightness, and off
- All buttons are programmable and can execute any system function (buttons are mechanically-captured to prevent vandalism)
- Programming via LumaEdit™ (for system setup)
- Built-in IR receiver enables station to be accessed via handheld remote



## 6-Button Slider Stations & Labels\*

- 2-gang, 3-slider *ks035-00x*
- 3-gang, 4-slider *ns045-00x*
- 3-gang, 6-slider *ks065-00x*
- 4-gang, 9-slider *ks095-00x*
- 5-gang, 12-slider *ks125-00x*
- 6-gang, 15-slider *ks155-00x*

## 11-Button Slider Stations & Labels\*

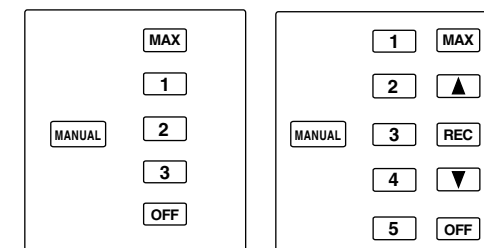
- 2-gang, 3-slider *ks031-00x*
- 3-gang, 6-slider *ks061-00x*
- 4-gang, 9-slider *ks091-00x*
- 5-gang, 12-slider *ks121-00x*
- 6-gang, 15-slider *ks151-00x*

\*Add letter to end of catalog number suffix as follows for color selection: Corian Glacier White (W) or Corian Nocturne Black (B).

For custom button legend selection, add "C" before the color code.

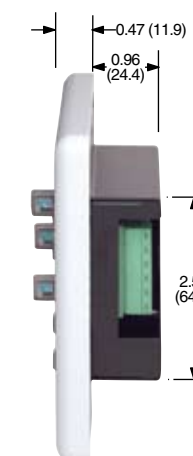
For a custom Corian color or otherwise customized face-plate, contact your local Leviton sales representative.

## STANDARD BUTTON LEGENDS



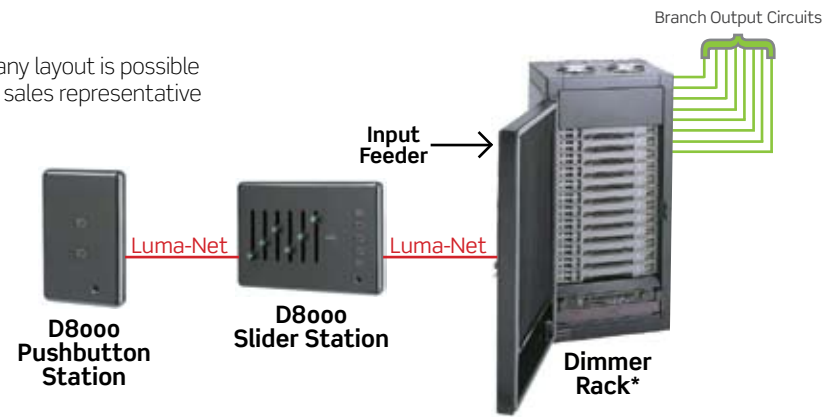
## D8000 Slider Stations - Width x Height

- 2 Gang 4.81 (12.2cm) x 4.50 (11.4cm)
- 3 Gang 6.62 (16.8cm) x 4.50 (11.4cm)
- 4 Gang 8.44 (21.4cm) x 4.50 (11.4cm)
- 5 Gang 10.25 (26.0cm) x 4.50 (11.4cm)
- 6 Gang 12.06 (30.6cm) x 4.50 (11.4cm)

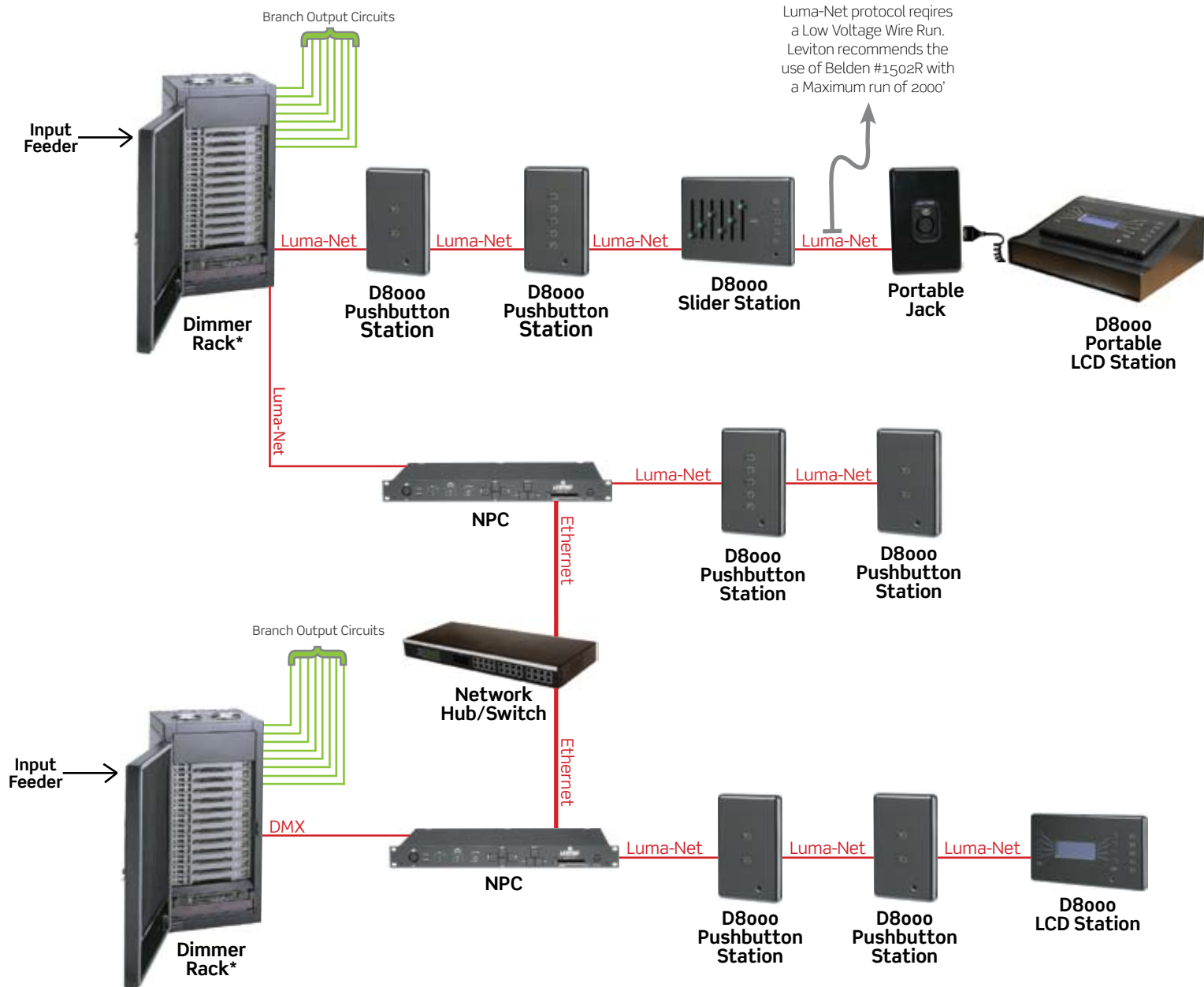


## BASIC SYSTEM

D8000 is a flexible system with very few prerequisites. Almost any layout is possible with most functionality easily achievable. Contact your Leviton sales representative for assistance with system planning.



## ADVANCED SYSTEM



\*Leviton offers an extensive line of high density dimming systems for architectural or entertainment applications. Visit [www.leviton.com/LMS](http://www.leviton.com/LMS) for more information.

## PRODUCT COMPATIBILITY CHART - PRODUCTS BEING CONTROLLED

CONTROLLERS

	D4200 Entrance Stations	D4200 Partition Stations	iSeries e a-2000 MDS	Z-MAX Network Panels	NPC	D4104/D4106	D4200	D4206	D4006	Closure Input/Output	AV
D4104/D4106	Yes	Yes	-	-	-	-	-	-	-	Yes	Yes
D4200	Yes	Yes	Yes	Yes	Yes	-	-	Yes	Yes	Yes	Yes
D4206	Yes	Yes	Yes	Yes	Yes	Yes	-	Yes	Yes	Yes	Yes
D8000	-	-	Yes	Yes	Yes	Yes	-	Yes	Yes	Yes	Yes
Luma-Graphics	-	-	Yes	Yes	Yes	Yes	-	Yes	Yes	Yes	Yes



Minneapolis Convention Center, Architect: Arvid Elness Architects, Inc., Lighting Design: Schuler & Shook Minneapolis, Minnesota

### D8000 ACCESSORY STATIONS & REMOTE CONTROL

#### Accessory Stations

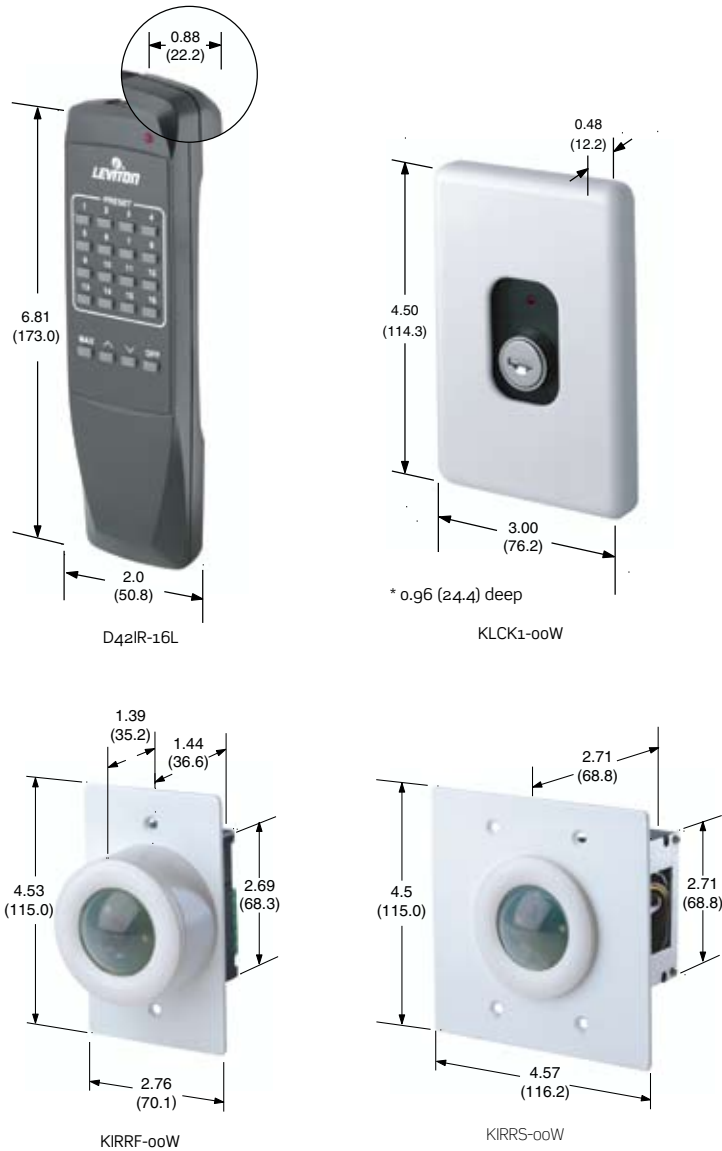
- All stations must be wired via Luma-Net®
- All fit inside 3.5-inch-deep, single-gang wallbox
- Optional, customized faceplate including full range of Corian colors, engraving, and fabrication from alternative materials

#### Handheld Remote Control

- Features 4-, 8- or 16-scene presets plus maximum brightness and off
- Point at any IR-receiving D8000 station or at auxiliary IR receiver to select scene, select maximum brightness, or turn off
- Operates at 56kHz frequency at 30- to 50-foot range

#### Auxiliary Infrared Receivers

- Available in flush- and surface-mount versions
- Must be programmed to work with IR-receiving D8000 Station
- Installs in a 3.5-inch-deep backbox



### Single-Gang Accessory Stations\*

- Key Switch Station—key operated lockout station that can be programmed to lock out any number of stations in the D8000 network
- Remote Portal Connection—for connecting a Consolette LCD, button or slider station
- PC Interface for LumaEdit™ Programming 9-pin female connector
- A/V Serial Interface 9-pin female connector, enables D8000 network to receive RS232 signals from personal computers and A/V equipment

klck1-00x

kifc1-00x

kifc2-00x

kifc3-00x

### Handheld Infrared Remote Controls

- 4 scene selections
- 8 scene selections
- 16 scene selections

d42ir-04l

d42ir-08l

d42ir-16l

### Auxiliary IR Receivers

- Flush-mounting IR Receiver (2-gang backbox)
- Surface-mounting IR Receiver (single-gang backbox)

kirrf-00w

kirrs-00w

### Contact Closures

- MechoShade® Interface—Dimensions contact closure output for use with MechoShade devices. Three Luma-Net channels to 2 standard MechoShade (5 position) and 1 blackout (2 position)
- Dimensions Contact Closure Output Board - LumaNet to 8 low-voltage contact closure relay outputs, each rated for up to 24V, 0.5A
- Combine Closure Card
- 8-Port Luma-Net Hub

dcmsd-021

dcout-008

kclcm-000

lhub8-000

\* Add suffix to catalog number as follows for color selection: Corian Glacier White (-00W), Corian Nocturne Black (-00B). For a custom Corian color or otherwise customized faceplate, contact your Leviton sales representative.



Morongo Casino Resort and Spa  
West Springs, California



David L. Lawrence Convention Center  
Pittsburgh, Pennsylvania

### REMEMBRANCE

Leviton's Remembrance line provides a straightforward, economical solution for smaller systems with both programmable and manual control for flexible lighting options that meet the needs for every mood the user looks to create. An economical solution for smaller systems, Remembrance offers "snapshot" function for easy programming in digital or analog. This system provides the greatest flexibility in control for applications where lighting needs are constantly changing and cannot be met with a series of pre-designed looks.

- Integrates with DMX512 or 0-10VDC analog for complete control of theatrical and architectural lighting
- Completely programmable buttons and sliders
- Wide variety of stations, including LCD buttons and sliders
- Available in DMX or analog versions
- Simple, powerful preset storage and recall
- DMX version controls up to 512 channels on up to 12 faders



#### Remembrance Analog Control Stations

- (1) Slider, (2) Gang *rmb81-001*
- (2) Sliders, (2) Gang *rmb81-002*
- (3) Sliders, (4) Gang *rmb81-003*
- (4) Sliders, (4) Gang *rmb81-004*
- (5) Sliders, (5) Gang *rmb81-005*
- (6) Sliders, (5) Gang *rmb81-006*
- (7) Sliders, (6) Gang *rmb81-007*
- (8) Sliders, (6) Gang *rmb81-008*
- (10) Sliders, (7) Gang *rmb81-010*
- (12) Sliders, (8) Gang *rmb81-012*
- (4) Sliders, (4) Presets, (6) Gang *rmb81-044*
- (4) Sliders, (8) Presets, (6) Gang *rmb81-048*
- (8) Sliders, (8) Presets, (8) Gang *rmb81-088*

#### Remembrance Entry Stations

- Entry Station, On/Off, (1) Gang *rmb81-021*
- Panic Station, On/Off, (1) Gang *rmb81-022*
- (4) Presets, iSeries e & Quad, (2) Gang *rmb81-024*
- (8) Presets, iSeries e & Quad, (2) Gang *rmb81-028*

#### Remembrance DMX Control Stations

- Master, (4) Sliders, (4) Gang *rmb81-104*
- Master, (6) Sliders, (5) Gang *rmb81-106*
- Master, (12) Sliders, (8) Gang *rmb81-112*
- Master, (4) Sliders, (6) Gang *rmb81-144*
- Master, (4) Sliders, (6) Gang *rmb81-148*
- Master, (8) Sliders, (8) Gang *rmb81-188*
- Master, (4) Sliders, Portable *rmb81-204*
- Master, (6) Sliders, Portable *rmb81-206*
- Master, (12) Sliders, Portable *rmb81-212*

### LUMA-NET CP STATIONS

These cost-effective, flexible architectural lighting control systems are excellent for churches, schools, and universities offering common features like integration of house and stage lighting for total control over the entire facility. The CP Station is a very flexible lighting control device with different models to cover zone and scene controls. Fader equipped models are very durable and will hold up to heavy usage in commercial applications.

#### 400 Series

- Programmable Fade Times
- Programmable Master/Slave Operation
- Control Lockout Function
- Front Panel Programmable or from PC with Optional Luma-Net Software and Interface I/F 501
- Mounts in Standard 2-Gang Electrical Box
- Works with any Luma-Net Product
- Compatible with DMX Dimmers or Micro-plex Dimmers when used with I/F 501

#### 800 Series

- Programmable Preset Buttons
- Programmable Fade Times
- All Off Button
- Each Slide Control Programmable for up to 100 Dimmer Channels
- Control Lockout Function
- Programmable with Luma-Net Software and Interface I/F 501 Only
- Mounts In Standard 2/3-Gang Electrical Box
- Works with any Luma-Net Product

**400 CP** *n0400-cpo*  
- 4 Programmable Zones  
- Controls 512 Dimmer Channels

**404 CP** *n0404-cpo*  
- 4 Programmable Zones  
- Controls 100 Dimmer Channels

**408 CP** *n0408-cpo*  
- 8 Programmable Scenes  
- Controls 100 Dimmer Channels

**804 CP** *n0804-cpo*  
- 4 Programmable Slide Controls  
- Controls 100 Dimmer Channels

**808 CP** *n0808-cpo*  
- 8 Programmable Slide Controls  
- Controls 500 Dimmer Channels



**DMX BATTERY OPERATED TESTER**

The DMX Tester is a portable DMX tester in a box so compact it can fit in a briefcase. This powerhouse tester combines multiple input and output modes for receiving DMX signal information as well as generating DMX output signals. Extending the already complete functionality, this battery operated tester can also be used as a DMX cable tester.

- View DMX input channel levels
- Generate DMX output channel levels
- “Auto-fade” automated output level generator
- Channel chase output mode
- Intelligent lighting equipment testing
- Display channel levels in percent (%) or hex
- LCD background lighting reduces power when not used and saves power to extend battery life
- Connection to scope with synch to any DMX channel
- Sleep mode - automatically enters sleep mode if idle for 5 minutes to extend battery life



**DMX 16**

16 channel de-multiplex from microplex to 0-10V for interface to any analog device.

- Adapts NSI 128 Channel Micro-Plex to any 0-10 V Dimmer Packs
- 16 Independent Control Channels
- Automatic Lamp Test Function
- AC Power On Indicator
- Allows Interface of NSI Microprocessor Memory Controllers
- LED Operation/Intensity Indicators
- Expands Easily
- User Programmable for Assignment of any of a Possible 128 Channels
- 19” Rack Mountable Chassis



**DMX Tester**

DMX Tester dmxml-tst

**DMX 16**

16 Channel De-multiplexer, 120V n0016-000  
 16 Channel De-multiplexer, 240V n0016-009

**DMX OPTICALLY ISOLATED SPLITTER/REPEATER**

The DMXSM-H18 splits a single DMX 512 channel DMX input into (8) completely isolated 512 channel DMX outputs. Perfect for segregating automated devices from conventional lighting or when an alternative to the traditional daisy-chained signal routing is desired.

- 1 Input
- 8 Outputs
- 100% optically isolated outputs
- Outputs rated to withstand max +48Vdc
- DMX-512A Compliant
- Built-in Power Switch
- 2-part terminals at rear, series wired, for permanent install



**DMX INPUT MERGER**

A DMX merger is used when multiple control inputs must communicate to the same device. A DMX merger helps to completely rid a system of complex, error-prone, multi-location DMX input wiring schemes. This merger combines all (8) inputs, using a highest level takes precedence (HTP) philosophy into a single 512 channel DMX output. All inputs are optically isolated from each other to ensure the protection of sensitive equipment. For further extension of the DMX signal, the merger can be combined with Leviton's DMXSM-H18 DMX splitter for an (8) input/(8) output DMX powerhouse.

- 8 Inputs
- 1 Output
- Inputs merge in highest level takes precedence (HTP) mode
- 100% optically isolated inputs
- Inputs rated to withstand max +48Vdc
- DMX-512A Compliant
- Built-in Power Switch
- 2-part terminals at rear, series wired, for permanent install



**DMX Optically Isolated Splitter/Repeater**

Optically Isolated Splitter/Repeater (1 In, 8 Out) dmxml-h18

**DMX Input Merger**

(8) Input Merger (8 In, 1 Out) dmxml-h81

**NPC**

Leviton's Network Protocol Converter (NPC) products provide exceptional convenience and flexibility as an interface between devices on differing networks. In all cases, 10/100BaseT Ethernet speaking the Colornet 3 protocol is standard. In addition, each model has it's own unique I/O making it a valuable part of the product line. NPC is required for interface to dimmers without Luma-Net 3 Ports.

**NPC XP**

- Dual Remote Video Display (Console & Dimmers)
- Simple Universe-Based DMX patching
- DMX Channel Patching (Channel by Channel)
- 19" EIA Rack Mount or Desktop Units
- (3) DMX Inputs, (3) DMX Outputs
- (2) Luma-Net Ports
- (16) Analog Inputs (0-10 VDC & Contact Closure)



**NPC DHV**

- Dual Remote Video Display (Console & Dimmers)
- Simple Universe-Based DMX patching
- DMX Channel Patching (Channel by Channel)
- 19" EIA Rack Mount or Desktop Units
- (3) DMX Inputs, (3) DMX Outputs



**NPC DLR**

- Simple Universe-Based DMX patching
- DMX Channel Patching (Channel by Channel)
- Desktop, Surface Mount, or 4 Gang Backbox (internal receptacles) mounting
- (1) DMX Input, (1) DMX Output
- (1) Luma-Net Port



**NPC 2D**

- Simple Universe-Based DMX patching
- DMX Channel Patching (Channel by Channel)
- Basic configuration from 8700 series console
- 2 Gang Backbox with internal Ethernet, External DMX
- Portable unit with C-Clamp for mounting
- (2) DMX Inputs, (2) DMX Outputs, or one of each.
- Power over ethernet supply



**NPC 4D**

- Simple Universe-Based DMX patching
- DMX Channel Patching (Channel by Channel)
- Basic configuration from 8700 series console
- 19" EIA Rack mount
- (4) DMX Inputs or Outputs on terminals
- (8) Universes of data conversion supporting most standard ethernet protocols

NPC XP, Desktop  
 NPC XP, Rack Mount  
 Memory Card, ATA, 16MB (for NPC XP)  
 NPC DHV, Desktop  
 NPC DHV, Rack Mount  
 NPC DLR, with BacNET  
 NPC DLR, Desktop or Surface Mount

npoxp-00d  
 npoxp-00r  
 npoxp-m16  
 npdhv-00d  
 npdhv-00r  
 npbac-000  
 npdlr-000

**I/F 501**

The I/F 501 is a very flexible protocol interface device with a host of different in/out combinations of the following protocols: DMX512, CMX, AMX, Micro-Plex, Luma-Net™, MIDI, RS232 and 0-10V analog.

- A precision 20 cue sequence with fade and wait times from 0.1 seconds to 50 minutes may be programmed into the non-volatile memory via the RS-232 port and triggered remotely.
- DMX / AMX / CMX / MPX Conversion
- 8 pre-programmed auto sequence chases for stand-alone operation
- Interface between a computer and the Luma-Net network for programming Luma-Net stations
- Trigger Luma-Net pre-sets with external contact closures



I/F 501 interface required for most dimmers.

**DMX CABLE**

- 3 pin-3, 10, 25, 50, or 100 foot DMX Cable
- 5 pin-3, 10, 25, 50, or 100 foot DMX Cable



**DMX ADAPTERS**

- 3 Pin Female to 5 pin Female Adapter
- 3 Pin Female to 5 pin Male Adapter
- 3 Pin Male to 5 pin Female Adapter
- 3 Pin Male to 5 pin Male Adapter
- 5 Pin Female to 5 pin Female Adapter
- 5 Pin Female to 5 pin Male Adapter



**I/F 501**

I/F 501, DMX512, Luma-Net 1	n0501-000
I/F 501, CMX to DMX	n0501-001
I/F 501, MPX/DMX to CMX	n0501-002
I/F 501, AMX to DMX	n0501-003
I/F 501, AMX Output	n0501-004

**DMX Cable**

3-Pin, 3ft	dmx3p-003
3-Pin, 10ft	dmx3p-010
3-Pin, 25ft	dmx3p-025
3-Pin, 50ft	dmx3p-050
3-Pin, 100ft	dmx3p-100
5-Pin, 3ft	dmx5p-003
5-Pin, 10ft	dmx5p-010
5-Pin, 25ft	dmx5p-025
5-Pin, 50ft	dmx5p-050
5-Pin, 100ft	dmx5p-100
DMX/CMX Control Cable, Custom (Quote Required)	dmx5p-cus

**DMX Adapters**

5-Pin Female to 5-Pin Female XLR	0a5ff-000
5-Pin Female to 5-Pin Male XLR	0a5fm-000
5-Pin Male to 5-Pin Male XLR	0a5mm-000
3-Pin Female to 5-Pin Female XLR	a3f5f-000
3-Pin Female to 5-Pin Male XLR	a3f5m-000
3-Pin Male to 5-Pin Female XLR	a3m5f-000
3-Pin Male to 5-Pin Male XLR	a3m5m-000



**D4DMX**

Leviton combines cutting edge technology and performance along with both DMX and Microplex control in the 4-channel Programmable D4DMX Dimmer Pack. It boasts the latest convenience features: Resettable circuit breakers in lieu of fuses and one-button setup of digital DMX addressing via a user-friendly LED panel, eliminating dip-switch settings. Its sturdy metal chassis makes this rugged pack ideal for both stationary and portable applications. In addition to multi-channel DMX and Microplex dimming control, these units can also provide a stand-alone chaser function with 16 preprogrammed patterns.

- Microplex and DMX512 protocols
- Available with DMX on 3-pin or 5-pin XLR receptacles
- Data “in” and “out” provided for easy daisy-chaining of devices
- Resettable circuit breakers (no fuses to change)
- Simple pushbutton DMX addressing makes setup a snap
- Bright LED display for easy, menu-driven programming
- Versatile output channel selector lets you choose the exact number of channels you need
- Clear operation instructions printed on back of unit for ease of use
- 16 Pre-programmed chase patterns with chase speed and chase output level controls.
- Input: 120V, 60Hz (15A Edison Plug)
- Output: 120V, 60Hz, 1200W per channel, 2400W Maximum
- Built-in mounting bracket
- Housed in rugged metal protective chassis



**D4DMX**  
D4DMX with 5-Pin DMX, 120V d4dmx-md5  
D4DMX with 3-Pin DMX, 120V d4dmx-md3

**ND 4600**  
ND 4600, 120V n4600-000  
ND 4600, 240V n4600-009

**ND 4600**

- 4 Channel Programmable Satellite Dimmer System
- Channel Address Switch
- Dual SCR Circuit Design
- Two Outputs per Channel
- NSI Micro-Plex Input and Through Ports
- Power On LED Indicator
- Control Signal Status Indicator LEDs
- Toroidal filtering reduces audio interference and extends lamp life
- 600 Watts per Channel
- 2400 Watts Maximum Power
- 60 Micro-Second Rise Time



**DDS**

DDS digital dimming systems combine portability with high caliber rugged performance for a variety of applications. The DDS series provides Leviton Micro-Plex system connect technology along with 0-10VDC analog control capability, with DMX512 always an available option. The DDS products may be assigned by channel to act as dimmers or as a relay switch for on/off operation of lights or motorized devices. The DDS series of digital dimming systems are offered in a variety of capacity and power configurations to meet every individual need.

- 4 Individual Dimmer/Relay Channels
- Dual SCR Circuit Design
- 512 Channel Address Capable
- External Fusing for Each Individual Channel
- User Select for Dimmer/Relay Operation
- User Select for Soft Start Operation to Increase Lamp Life
- Internal Jumpers Activate 8 Auto Sequence Control Programs
- Power On LED Indicator
- Control Status Indicator LED
- Individual Channel Function LEDs
- NSI 128 Channel Micro-Plex (3-pin XLR)
- Optional DMX512 Digital Control (5-pin XLR )
- Available with Either 15 or 20 Amp Power Supply Cords



**DDS 5600**  
- 600 Watts per Channel  
- 2400 Watts Maximum Power  
- 160 Micro-Second Rise Time  
- Integral Hanging Bracket

**DDS 6000**  
- 1200 Watts per Channel  
- 2400 Watts Maximum Power  
- 400 Micro-Second Rise Time  
- Optional Screw Terminal Outputs

**DDS 6000+**  
- 1200 Watts per Channel  
- 4800 Watts Maximum Power  
- 2 Power Supply Cords  
- 400 Micro-Second Rise Time  
- Optional Screw Terminal Outputs



	Number Dimmers	Max Load per Dimmer	Max Load per Pack	Feeder Plug	Non-Dim Mode	Rise Time (µs)	Standard Control	Optional Control
D4DMX	4	1200W	2400W	5-15P	Yes	-	DMX/MPX	-
ND4600	4	600W	2400W	5-15P	No	160	NSI MPX	-
DDS5600	4	600W	2400W	5-15P	Yes	160	NSI MPX	DMX
DDS6000	4	1200W	2400W	2* 5-15 or 20P	Yes	400	NSI MPX	DMX
DDS6000+	4	1200W	4800W	2* 5-15 or 20P	Yes	400	NSI MPX	DMX

- DDS 5600**
- DDS 5600, 15A Power Supply Cord, 120V n5600-000
  - DDS 5600, DMX Installed, 15A Power Supply Cord, 120V n5600-d00
  - DDS 5600, 20A Power Supply Cord, 120V n5600-020
  - DDS 5600, DMX Installed, 20A Power Supply Cord, 120V n5600-d20
  - DDS 5600, 15A Power Supply Cord, 240V n5600-009
  - DDS 5600, DMX Installed, 15A Power Supply Cord, 240V n5600-d09

- DDS 6000 & 6000+**
- DDS 6000, 15A Power Supply Cord, 120V n6000-000
  - DDS 6000, DMX Installed, 15A Power Supply Cord, 120V n6000-d00
  - DDS 6000, 20A Power Supply Cord, 120V n6000-020
  - DDS 6000, DMX Installed, 20A Power Supply Cord, 120V n6000-d20
  - DDS 6000, 15A Power Supply Cord, 120V n6000-009
  - DDS 6000, DMX Installed, 15A Power Supply Cord, 240V n6000-d09
  - DDS 6000+, Dual 15A Power Supply Cords, 120V n600p-000
  - DDS 6000+, DMX Installed, Dual 15A Power Supply Cords, 120V n600p-d00
  - DDS 6000+, Dual 20A Power Supply Cords, 120V n600p-020
  - DDS 6000+, Knockout, 120V n600p-02k
  - DDS 6000+, DMX Installed, Dual 20A Power Supply Cords, 120V n600p-d20
  - DDS 6000+, DMX Installed, Knockout, 120V n600p-d2k
  - DDS 6000+, Dual 15A Power Supply Cords, 240V n600p-009
  - DDS 6000+, Knockout, 240V n600p-0k9
  - DDS 6000+, DMX Installed, 240V n600p-d09
  - DDS 6000+, DMX Installed, Knockout, 240V n600p-dk9

Model	Number Dimmers	Max Load per Dimmer	Max Load per Pack	1-Phase Max Feed	3-Phase Max Feed	Non-Dim Mode	RiseTime (µs)	Standard Control	Optional Control
NRD 8000	8	1200W	9600W	-	-	No	400	MPX	-
DDS 8600	6	1200W	7200W	30A	20A	Yes	300	MPX	DMX
DDS 8800	8	1200W	9600W	40A	-	Yes	300	MPX	DMX
DDS 9600	6	2400W	14,400W	60A	40A	Yes	400	MPX	DMX
DDS 9800	8	2400W	19,200W	80A	-	Yes	400	MPX	DMX
DS 8/12	8	1200W	9600W	40A	-	Yes	350	DMX, MPX, LN1, 0-10Vdc	-
DS 8/24	8	2400W	19,200W	80A	-	Yes	350		
DS 12/12	12	1200W	14,400W	60A	40A	Yes	350		
DS 12/24	12	2400W	28,800W	120A	80A	Yes	350		

**NRD 8000**

- 8 Channel Programmable Satellite Dimmer System
- 120/240 Volt Single-Phase Power Operation
- Dual SCR Circuit Design
- Individual Channel Circuit Breaker Protection
- NSI Micro-Plex Input and Through Jacks
- Automatic Lamp Test Function
- Status Indicator LEDs
- Toroidal filtering reduces audio interference and extends lamp life
- 19" Rack Mountable Chassis



- 1200 Watts per Channel
- 9600 Watts Maximum Power
- 400 Micro-Second Rise Time

NRD 8000, (8) Channel, Edison, Output, 120V	n8000-0e0
NRD 8000, (8) Channel, Knockout Panel, 120V	n8000-0ko
NRD 8000, (8) Channel, Edison, Output, 230V	n8000-0e9
NRD 8000, (8) Channel, Knockout Panel, 230V	n8000-0k9

**DS MODULAR DIMMER**

Leviton's DS digital dimmer systems combine convenient mobility with a rugged design and high caliber performance for a variety of lighting application demands. The DS dimmers include a sixteen character liquid crystal display and front panel keypad for intuitive access to features like presets with time fades, soft patch of DMX and Leviton's Micro-Plex control signals, 0-10VDC analog input control, and module temperature data. LED's on the front panel also provide status to a host of functions like dimmer control level, active power sources, active DMX512 and NSI Micro-Plex control signals, and temperature conditions. A DMX512 termination switch is provided on the front panel. All of these performance features combined with the highest power density on the market makes this dimmer an unbeatable value.

- Fully Modular Design
- Dimmer and Control Modules are Easily Serviced Using Removable Front Panel While Dimmer Remains in Rack
- 8 & 12 Channel Versions
- 1200 kW & 2400 kW Per Channel Versions
- 16 Character X 2 Line Backlit Liquid Crystal Display
- 20 Button Function Keypad
- Non-Volatile EEPROM Preset and Softpatch Storage
- Softpatch Capable
- Programmable Time Fade Presets
- Programmable Bump Buttons
- Front Panel Accessible DMX512 Termination Switch
- Magnetic Circuit Breakers
- Voltage Regulation
- DMX512 Control Input (5 pin XLR)
- NSI Micro-Plex Control Input (3 pin XLR)
- NSI Luma-Net® Architectural Control Input
- 0-10VDC Analog Control Inputs
- 120V Input Power- Single Phase & Three Phase Available
- 15V RMS Preheat Range
- Full On Test/Focus
- Over Voltage and Over Temperature Protection
- Valid DMX Signal Indicator
- Valid NSI Micro-Plex Signal Indicator
- Line Power Indicator LEDs
- Temperature Status LED
- 350 Micro-Second Rise Time



**DS 8-12**

- 8 - 1200 Watt Dimmer / Relay Channels
- 9,600 Watts Maximum Power Capability
- Single Phase Power Operation
- 2 pole 40 Amps Input Feed



**DS 8-24**

- 8 - 2400 Watt Dimmer / Relay Channels
- 19,200 Watts Maximum Power Capability
- Single Phase Power Operation
- 2 pole 80 Amps Input Feed



**DS 12-12**

- 12 - 1200 Watt Dimmer / Relay Channels
- 14,400 Watts Maximum Power Capability
- Single / Three Phase Power Operation
- 2 pole 60 Amps / 3 pole 40 Amps Input Feed



**DS 12-24**

- 12 - 2400 Watt Dimmer / Relay Channels
- 28,800 Watts Maximum Power Capability
- Single / Three Phase Power Operation
- 2 pole 120 Amps / 3 Pole 80 Amps Input Feed

DS 8-12 Dimmer Pack, Edison, 5-20 Outputs	nds08-1e0
DS 8-12 Dimmer Pack, Knockout Panel	nds08-1ko
DS 8-12 Dimmer Pack, Stage Pin Panel	nds08-1so
DS 8-24 Dimmer Pack, Edison 5-20R Outputs	nds08-2e0
DS 8-24 Dimmer Pack, Knockout Panel	nds08-2ko
DS 8-24 Dimmer Pack, Stage Pin Panel	nds08-2so
DS 12-12 Dimmer Pack, Edison 5-20R Outputs	nds12-1e0
DS 12-12 Dimmer Pack, Knockout Panel	nds12-1ko
DS 12-12 Dimmer Pack, Stage Pin Panel	nds12-1so
DS 12-12 Dimmer Pack, Edison 5-20R Outputs	nds12-2e0
DS 12-24 Dimmer Pack, Knockout Panel	nds12-2ko
DS 12-24 Dimmer Pack, Stage Pin Panel	nds12-2so

**TOPAZ**

From theatrical to architectural environments, these compact and ruggedly designed dimming cabinets are ideal for permanent installation in a wide array of facilities. They feature high density dimming in small footprint packages for versatile, powerful, yet cost-effective performance. These heavy duty Leviton cabinets provide true theatrical grade performance for everything from churches to theaters and more. For your most demanding dimming applications Leviton products meet the challenge.

- Plug-in Dimmer Modules
- Plug-in Electronic Control Module
- Lightweight
- Single or Three Phase Power
- Locking Door Prevents Unauthorized Access
- 120 or 230 Voltage
- User Programmable Panic Switches
- Low Noise Fans
- Terminals Provided and Labeled for All Control Circuits



- Topaz 12 Wall Pack**
- Houses 6 Plug-in Dimmer Modules (12 channels)
  - Available with Semi-recessed Mounting Kit
  - 120 and 240 Volt Versions
  - Bus Strapping is Arranged for Easy Conversion from 3 Phase to 1 Phase
  - Ultra Low Noise Operation



- Topaz 12 Portable**
- Houses 6 Plug-in Dimmer Modules (12 channels)
  - Less than 44 lbs. in Weight
  - Stackable Design, Extremely Compact
  - 120 Volt Only
  - Robust Enclosure - Built to Endure the Demands of the Road
  - Optional Cam-type Inputs and Main Circuit Breaker



- Topaz 24**
- Houses 12 plug-in Dimmer Modules (24 channels)
  - Plug-in Dimmer and Control Modules (order separately)
  - Wall Mount
  - 120 Volt and 240 Volt Versions
  - Lateral Busing Kit (connects 2 racks for a total of 48 channels)
  - Single Phase or Three Phase Input Power



- Topaz 96**
- Houses 48 Plug-in Dimmer Modules (96 channels)
  - 120 Volt and 240 Volt Versions
  - Lateral Busing Kit (connects 2 racks for a total of 192 channels)
  - Single Phase or Three Phase Input Power



**Topaz Dimmer Modules**

- Available in 1.8kW and 2.4kW 120 Volt and 2.5kW 240 Volt Versions
- Filler Module also Available
- 350 Micro-Second Rise Time
- Enclosed Two-piece Engineering Grade, "Rynite" FR530 Chassis
- All Heat Generating Components Have Separate Ambient Air Intakes to Eliminate Heat Build Up
- Compact Design, Each Module is 1.25"H x 12.0"W x 4.0"D, Weighing just 2.5 lbs.



**Topaz Control Modules**

- Digital/Analog and 120/240 Volt
- Completely Digital Circuitry Including a High-Speed Microprocessor
- Indicator LEDs Show That Power is Present and the System is Functioning Properly
- User-selectable Rack Number Thumbwheel
- DMX or Analog Input
- Non-dim Switches for Each Dimmer

**Topaz 12 Wall Pack**

Topaz 12 Wall Dimmer Pack, 120V  
Topaz 12 Wall Dimmer Pack, 230V

tz012-000  
tz012-240

**Topaz 12 Portable**

(24) 20A Stage Pin Outputs  
(12) 20A Edison Duplex Outputs (NEMA 5-20RD)  
(12) Locking Connectors L5-20 Outputs  
(12) 15A Edison Duplex Outputs (NEMA 5-15RD)  
(24) 15A Stage Pin Outputs, 230V  
(12) 20A Locking Connectors with 15A Dimmers, 230V

tz12p-00s  
tz12p-02e  
tz12p-00l  
tz12p-01e  
tz12p-24s  
tz12p-24l

**Topaz 24**

24 Channel Dimmer Rack, 120V  
Topaz 48 2-Topaz 24 Channel Racks with Interconnect  
Topaz 24 Channel Dimmer Rack, 230V

tz024-000  
tz024-24d  
tz024-240

**Topaz 96**

Topaz 96 Channel Dimmer Rack, 120V  
Topaz 96 Channel Dimmer Rack, 230V

tz096-000  
tz096-240

**Topaz Dimmer Modules**

Airflow Module tzmod-fil  
Dual 1.8kW, 15A, 120V, Dimmer Module tzmod-018  
Dual 2.4kW, 20A, 120V, Dimmer Module tzmod-024  
Dual 120V, 20A Constant Module tzmod-ocm  
Dual 2.5kW, 15A, 230V, Universal Dimmer Module tzmod-224  
Dual 2.4kW, 20A, 120V, Dimmer Module with Thermal Magnetic Breakers tzmod-t24  
Dual 230V, 25A Dimmer Module tzmod-260

**Topaz Control Modules**

96 Rack Control Module Wired 1-1, 120V Phase Balanced Rack Control Module (Topaz 96, 2 required per Rack) tzcmd-g61  
12 or 24 Dimmer Control Module tzcmd-g6p  
Remote Control Module tzcmd-unv  
96 Rack Control Module Wired 1-1, 230V tzcmd-dmx  
96 Rack Control for 230V Racks Module - Phase Balanced (2 per Rack) tzcmd-291  
Universal Control Module for 12 and 24 230V Racks tzcmd-29p  
Remote Control Module for 230V Racks tzcmd-2un  
tzcmd-2dX

iSERIES

The Leviton iSeries line of dimmer products is a cost effective line with the same, robust mechanical design approach as the standard iSeries. The series features racks, which accommodate from 24 to 96 individual dimmers. The Leviton i48 Quad features double the dimming capacity (48 dimmers) as the i24 in the same, basic cabinet.

- All rack configuration data is stored in rack electronics
- Hot-swappable modules require no programming
- Stores 100 timed backup looks; 12 looks for house or stage
- Optional handheld terminal provides feedback and control at each rack or remotely
- Optional redundant control module provides seamless backup for each rack

	<i>iSeries</i>	<i>iSeries</i> QUAD	<i>iSeries</i> e
<b>No. Modules</b>	12, 24 or 48	12	12, 24 or 48
<b>No. Circuits</b>	up to 96	4 per module, 48 per cabinet	up to 96
<b>Mounting</b>	12-module cabinet is wall mountable; others free standing	wall mountable	12-module cabinet is wall mountable; others free standing
<b>Load Types</b>	Supported by custom profiles: <ul style="list-style-type: none"> <li>• Incandescent</li> <li>• Magnetic Low Voltage</li> <li>• 2-Wire Fluorescent - Advance Mark 10® and Lutron Tu-Wire®*</li> <li>• Solid State Low Voltage</li> </ul>	Supported by built-in profiles: <ul style="list-style-type: none"> <li>• Incandescent</li> <li>• Magnetic Low Voltage</li> <li>• 2-Wire Fluorescent - Advance Mark 10® and Lutron Tu-Wire®*</li> <li>• 3-Wire Fluorescent - Hi-Lume® and Eco-10™*</li> <li>• Solid State Low Voltage</li> </ul>	Supported by built-in profiles: <ul style="list-style-type: none"> <li>• Incandescent</li> <li>• Magnetic Low Voltage</li> <li>• 2-Wire Fluorescent - Advance Mark 10® and Lutron Tu-Wire®*</li> <li>• 3-Wire Fluorescent - Hi-Lume® and Eco-10™*</li> <li>• Solid State Low Voltage</li> </ul>
<b>Voltage Rating</b>	US & International	US & International	US & International
<b>Voltage</b>	+/- 1 Voltage Regulation	+/- 1 Voltage Regulation	+/- 1 Voltage Regulation
<b>Wattage Ratings</b>	1.8 to 10kW	1.8 to 2.4kW (4.0kW International)	1.8 to 10kW
<b>Reporting</b>	<ul style="list-style-type: none"> <li>• Overtemp Warning</li> <li>• Overtemp Shutdown</li> <li>• Phase Voltage Anomaly</li> <li>• Data Signal Anomaly</li> <li>• Active Load</li> <li>• Active Voltage</li> <li>• Error Conditions</li> <li>• Deviation from Recorded Load</li> <li>• Tripped Breaker</li> <li>• Panic Condition</li> <li>• Incorrect Module for Rack Position</li> </ul>	<ul style="list-style-type: none"> <li>• Overtemp Warning</li> <li>• Overtemp Shutdown</li> <li>• Phase Voltage Anomaly</li> <li>• Data Signal Anomaly</li> </ul>	<ul style="list-style-type: none"> <li>• Overtemp Warning</li> <li>• Overtemp Shutdown</li> <li>• Phase Voltage Anomaly</li> <li>• Data Signal Anomaly</li> </ul>
<b>Additional Features</b>	<ul style="list-style-type: none"> <li>• Remote Programming and Status Reporting</li> <li>• Optional Electronic Noise Reduction</li> <li>• Programmable to Numerous Parameters</li> </ul>	<ul style="list-style-type: none"> <li>• Remote Programming and Status Reporting</li> </ul>	<ul style="list-style-type: none"> <li>• Remote Programming and Status Reporting</li> </ul>
<b>Interfaces</b>	<ul style="list-style-type: none"> <li>• DMX</li> <li>• Ethernet</li> </ul>	<ul style="list-style-type: none"> <li>• DMX</li> <li>• Luma-Net</li> <li>• Analog</li> </ul>	<ul style="list-style-type: none"> <li>• DMX</li> <li>• Luma-Net</li> <li>• Analog</li> </ul>



24 Circuit Rack (48 Circuit Quad)



48 Circuit Rack



96 Circuit Rack

iSERIES DIMMER MODULES

- Contain 2 discrete dimmed circuits (i48 Quad has 4 circuits)
- Floating load and line connectors for smooth insertion and removal of module and integrity of all power and control contacts
- Built-in panic function for each dimmer
- Power regulation provides smooth consistent power output despite fluctuations in power input
- LED on face offers immediate, local feedback at the rack
- Individual module over-temp warning and shutdown feature (i Series module only)
- Failure of single module will not affect rack operations
- Ultra-smooth dimming (in 4000 steps)
- Optically isolated control signal to 4000 volts
- Available in U.S. and international voltages



iSeries e Dimmer Module



iSeries Quad Dimmer Module



iSeries Control Module



iSeries e/Quad Control Module



iSeries Handheld Terminal



iSeries e/Quad Handheld Terminal

iSERIES CONTROL MODULES

- Provide seamless backup for each rack plus control signal mapping

iSERIES HANDHELD TERMINAL

- For remote monitoring and programming of dimmer operating parameters

\*Module for iSeries contains additional circuitry for monitoring and feedback

\*Mark 10® is a registered trademark of Advance Transformer Company. Eco-10™ is a trademark and Tu-Wire® and Hi-lume® are registered trademarks of Lutron Electronics, Inc.

**iSeries 24 Circuit Rack (48 Circuit Quad)\***

i24 Standard, Dual 1.8/2.4kW, Phase Balanced	ctp-4-0131
i24 Standard, Dual 2.5kW, Phase Balanced	ctp-4-0171
12 Module 230V i24 Phase Balanced Dimmer Rack	ctp-4-0175

**iSeries e Rack\***

24 Module iSeries e Dimmer Rack, Standard Configuration	ctp-4-0122e
24 Module iSeries e Dimmer Rack, 230V, Dual 2.5kW, Sequential or Phase Balanced	ctp-4-0162e
24 Module 230V i48e Dimmer Configured for Dual 5kw Dimmer Modules	ctp-4-0166e

**iSeries Quad Rack\***

48 Rack, 120V, Quad 1.8/2.4kW, Sequential/Phase Balanced	ctp-4-1132
48 Rack, 230V, Quad 4.0kW, Sequential/Phase Balanced	ctp-4-1176

**iSeries 48 Circuit Rack\***

i48 Standard, Dual 1.8/2.4kW, Phase Balanced	ctp-4-0121
i48 Standard, Dual 2.5kW, Phase Balanced	ctp-4-0161
i48 Standard, Dual 5.0kW, Phase Balanced	ctp-4-0165

**iSeries e Rack\***

48 Module 120V i96e Dimmer Rack, Standard Configuration	ctp-4-0112e
48 Module iSeries e Dimmer Rack, 230V, Dual 2.5kW, Sequential/Phase Balanced	ctp-4-0152e
48 Module Dimmer Rack, 230V, Configured for Dual 5kw Dimmer Modules	ctp-4-0156e

**iSeries g6 Circuit Rack\***

ig6 Standard, Dual 1.8/2.4kW, Phase Balanced	ctp-4-0111
ig6 Standard, Dual 2.5kW, Phase Balanced	ctp-4-0151
ig6 Standard, Dual 5.0kW, Phase Balanced	ctp-4-0155

**iSeries e Dimmer Module**

2.4kW Single Dimmer Module, 120V	ied18-120
6.0kW Single Dimmer Module, 120V	ied13-150
1.8kW Dual Dimmer Module, 120V	ied23-115
2.4kW Dual Dimmer Module, 120V	ied23-120
5.0kW Single Dimmer Module, 230V	ied15-220
2.5kW Dual Dimmer Module, 230V	ied23-210
5.0kW Dual Dimmer Module, 230V	ied23-220

**iSeries Quad Dimmer Module**

1.8kW, Quad Dimmer Module, 120V	ied43-115
2.4kW, Quad Dimmer Module, 120V	ied43-120
15A Constant Module, 120V	iec40-115
20A Constant Module, 120V	iec40-120
4.0kW, Quad Dimmer Module, 230V	iec43-215

**iSeries Control Module**

HHT/Control Module Adapter Cable for i24	ctp-4-0305
iSeries Control Module (ICM), 120V	ctp-4-0311
iSeries Control Module (ICM), 230V	ctp-4-0312

**iSeries e/Quad Control Module**

iSeries i48E/g6E Quad Control Module	ctp-4-0311e
--------------------------------------	-------------

**iSeries Hand Held Terminal**

iSeries Hand Held Terminal (HHT)	ctp-4-0301
----------------------------------	------------

**iSeries e/Quad Hand Held Terminal**

iSeries e/Quad Hand Held Terminal (HHT)	tahhr-oie
---	-----------

\* Consult factory for additional configurations. Sequential option available.

**2408 CD**

The 2408 CD takes the limits off traditional dimming packs, offering a simple solution to both architectural and entertainment lighting needs. The 2408 CD is the height of versatility, providing Microplex, DMX512, and 0-10 Volt analog inputs, as well as Luma-Net® control capability. It's robust, conservative design means this dimmer is built to provide years of dependable service.

- 8 Individual Dimmer/Relay Channels
- 2,400 Watts per Channel, 19,200 Watts Maximum
- Dual SCR Circuit Design
- Toroidal filtering reduces audio interference and extends lamp life
- Microprocessor Controlled
- 8 Fully Magnetic Circuit Breakers
- 120/240 Volt Operation
- 512 Channel Address Capable
- Channel Address Select Switch
- Extruded Aluminum Passive Heat Dispersion
- NSI Micro-Plex, DMX512 and 0-10 Volt Analog Inputs
- Luma-Net® Architectural Control Capable
- Pressure Screw Terminals for Hardwire Inputs/Outputs
- Compatible with 0-10V and Mark 10 Ballasts
- 400 Micro-Second RiseTime
- Single Phase Power
- 2 Pole 80 Amps
- 2404 CD 4-Channel Model Also Available
- 2408 CR Relay Model Also Available



2408 CD Commercial Dimmer Pack with (8) Channels  
 2408 CD Commercial Dimmer Pack with (8) Channels  
 2408 CR Commercial Relay Pack with (8) Channels  
 2408 CR Commercial Relay Pack with (8) Channels

n2408-cdo  
 n2408-cdg  
 n2408-cro  
 n2408-crg

### POWER EXTENDERS

Leviton power extenders allow higher and different types of loads to be controlled by dimmers and architectural dimming systems than would otherwise be possible. A variety of models are available for all types of lighting loads.



- Emulate characteristics of connected dimmers in terms of dimming range and resolution
- Available low-end trim for setting minimum brightness level
- Most models can be surface- or flush-mounted
- UL Listed

Note: dimensions in parenthesis are millimeters; all other dimensions are inches.

#### DESCRIPTION

Extends dimming zone capacity for incandescent, magnetic low-voltage, halogen, or neon/cold cathode lighting

#### CAT. NO.

pe100-10w

#### RATING

Input Voltage: 120V 50/60Hz\*  
Load Rating: 1920W/VA  
Dimmer Input: 120V 50/60Hz

#### COLOR

White

Extends dimming zone capacity for Mark 10® Powerline™, Hi-lume®, Lutron Tu-Wire® or equivalent dimmable fluorescent ballasts

pe200-10w

Input Voltage: 120V 50/60Hz\*  
Load Rating: 1920VA  
Dimmer Input: 120V 50/60Hz

White

Extends dimming zone capacity for Mark 10® Powerline™, Hi-lume, Lutron Tu-Wire® or equivalent dimmable fluorescent ballasts

pe200-70w

Input Voltage: 277V 50/60Hz\*  
Load Rating: 3000VA  
Dimmer Input: 120V 50/60Hz

White

Extends dimming zone capacity for Mark 7™ 0-10V, Lutron 0-10V, OSRAM Sylvania Quicktronic® Helios™, or equivalent ballasts

pe300-dow

Input Voltage: 120-277VAC 60Hz\*  
Load Rating: 20A-2400VA  
@ 120VAC, 5500VA @ 277VAC  
Power Consumption: 6W @ 120VAC, 18W @ 277VAC  
Output Ballast Control: 0-10VDC  
Dimmer Input: 120V 60Hz

Metallic Silver

Extends dimming zone capacity for electronic low voltage or incandescent lighting

pe400-10w

Input Voltage: 120VAC 50/60Hz\*  
Load Rating: 1000W/VA  
Dimmer Input: 120V 60Hz

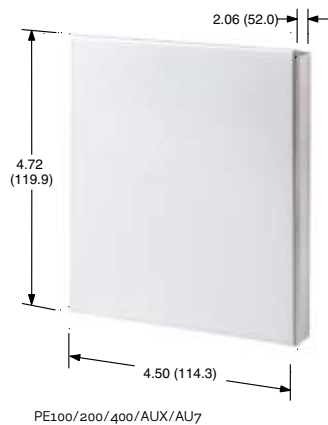
White

Extends dimming zone capacity for Mark 7®, OSRAM Sylvania Quicktronic® Helios™, or equivalent to 0-10VDC electronic ballast

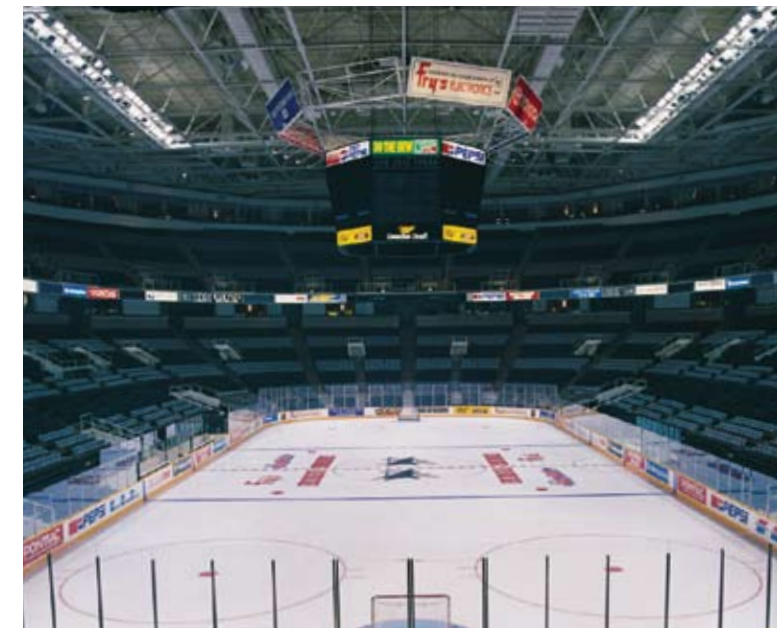
peau7-m1w

Input Voltage: 120-230VAC 50/60Hz\*  
Load Rating: 1920W/VA @ 120VAC, 2300W/VA @ 230VAC  
Dimmer Input: 120V 50/60Hz

White



Sun Dial Restaurant at the Westin Peachtree Plaza Hotel, Architect: John Portman  
Atlanta, Georgia



San Jose Arena Ice Rink, Architect: Sink Combs Dethlefs  
San Jose, California

\*Load output power is phase independent of control device.

**LEO**

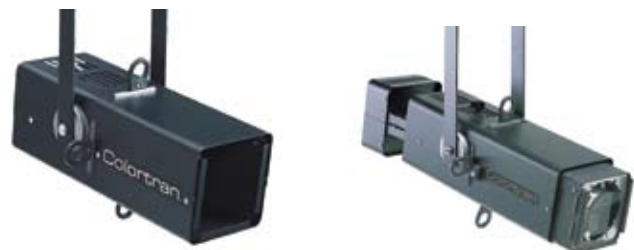
Leviton's Enhanced Optics ellipsoidal spotlight breaks through the barriers and pitfalls commonly associated with new generation ellipsoidal reflector spotlights. LEO offers exceptional performance with a highly engineered optical system resulting in increased efficiency and more light where you need it.

- 15°, 19°, 26°, 36°, & 50° field angles
- Continuous body & barrel on-axis rotation (Greater than 360°)
- Up to 750W lamp
- 115-240V
- Cosine (Flat) & Peak focus with all recommend lamps & beam angles
- Soft Focus
- 30-second lamp replacement
- Field adjustable lenses to change field angle
- Cool Grip handles for all common adjustments
- Supports popular HX series of lamps



**MINI ELLIPSE**

- Three field angles (50°, 40°, 30°) in one unit, providing maximum versatility
- Unsurpassed photometric performance. Delivers more light than any competitive unit
- Wide range of long-life lamps allow for economical and reliable operation
- "Joy-Stick" design allows fast, precise filament alignment without tools
- Built-in pattern slot
- Each framing shutter travels in its own plane, eliminating interference



**FRESNEL**

- Lightweight rugged aluminum construction
- High intensity spot with a smooth even field
- Fully insulated handles
- Smooth focus operation
- Superior Ventilation System
- Available in 6" 1KW or 8" 2KW models
- Theater Models have medium or pre-focus socket
- Television Models have medium or mogul split bi-post socket



**PAR CANS**

- Available in PAR 38, 56, & 64 models
- Rigid, rolled edge frame for extra strength
- Solid Steel Clutch Mechanism on PAR 56 & 64
- Includes color frame at no extra cost
- Black, White, & Chrome finishes available



Par 64

Par 56

Par 38

**SET LIGHT**

The compact size of these instruments makes them ideal for mounting in tight places. A one-piece reflector—either symmetrical or asymmetrical—is designed to illuminate large surfaces such as cycs, backings and charts, and are ideal for location or small-studio requirements. Integral barndoor provides for shaping and sharp cutoffs.



- Compact light producing asymmetric pattern
- Used for small cycs, backdrops, charts, etc.
- One piece high-efficiency reflector for high output
- Barn doors provide sharp cutoff

**CYC STRIP**

Cyc Strip is a portable and efficient way to light cycloramas or large drops. The unit accepts 500, 750 or 1000 watt lamps. It mounts in any position with trunion or yoke and is wired for one through four color circuits.



- 1-9 light models, 1-3 ckt continuous strip producing an asymmetric pattern
- Useful for near-cyc even illumination of a cyc is required
- One-piece high output reflector
- Wide variety of support lamps

**FAR CYC**

Ideal for uniform, energy-efficient lighting of large cycloramas, Far Cyc lights will uniformly illuminate 40 vertical feet of cyc on 12' centers 10' from cyc. Color frame design permits uniform radiation over color media. Uneven fading is eliminated and color effects filter life is increased by 50 percent. 1kW, 1.5kW and 2kW lamps are available for maximum versatility.



- The premium incandescent cyc light
- Uniformly illuminates 40 vertical feet on 10-12 ft. centers
- 1K - 2K lamps available
- Designed for 20A circuits with pass-thru
- 1, 2, 3, or 4 circuit models

**LEO**

LEO, 15° Beam Angle, Bare Leads	lel15-00b
LEO, 15° Beam Angle Stage Pin Plug, Black	lel15-0sb
LEO, 15° Beam Angle 5-15 Plug, Black	lel15-0pb
LEO, 15° Beam Angle 5-20 Plug, Black	lel15-0tb
LEO, 19° Beam Angle Bare Leads, Black	lel19-00b
LEO, 19° Beam Angle Stage Pin Plug, Black	lel19-0sb
LEO, 19° Beam Angle 5-15 Plug, Black	lel19-0pb
LEO, 19° Beam Angle 5-20 Plug, Black	lel19-0tb
LEO, 26° Beam Angle Bare Leads, Black	lel26-00b
LEO, 26° Beam Angle Stage Pin Plug, Black	lel26-0sb
LEO, 26° Beam Angle 5-15 Plug, Black	lel26-0pb
LEO, 26° Beam Angle 5-20 Plug, Black	lel26-0tb
LEO, 36° Beam Angle Bare Leads, Black	lel36-00b
LEO, 36° Beam Angle Stage Pin Plug, Black	lel36-0sb
LEO, 36° Beam Angle 5-15 Plug, Black	lel36-0pb
LEO, 36° Beam Angle 5-20 Plug, Black	lel36-0tb
LEO, 50° Beam Angle Bare Leads, Black	lel50-00b
LEO, 50° Beam Angle Stage Pin Plug, Black	lel50-0sb
LEO, 50° Beam Angle 5-15 Plug, Black	lel50-0pb
LEO, 50° Beam Angle 5-20 Plug, Black	lel50-0tb

**Mini Ellipse**

Mini Ellipse 30/40/50°, Bare Wire	000me-50b
Mini Ellipse 30/40/50°, Stage Pine Connector	000me-22b
Mini Ellipse 30/40/50°, Edison Connector	000me-42b
Mini Ellipse 30/40/50°, Locking Receptacle Connector	000me-62b

**Fresnel - Television**

6" Television Fresnel with Bare Leads	fr1tv-50b
6" Television Fresnel with Stage Pin Connector	fr1tv-22b
6" Television Fresnel with Edison Connector	fr1tv-42b
6" Television Fresnel with Locking Receptacle Connector	fr1tv-62b
8" Television Fresnel with Bare Leads	fr2tv-50b
8" Television Fresnel with Stage Pin Connector	fr2tv-22b
8" Television Fresnel with Edison Connector	fr2tv-42b
8" Television Fresnel with Locking Receptacle Connector	fr2tv-62b

**Fresnel - Theater**

6" Theater Fresnel, Bare Wire	fr1th-50b
6" Theater Fresnel, 20A Male Stage Pin Installed	fr1th-22b
6" Theater Fresnel, 15A Edison Plug Installed	fr1th-42b
6" Theater Fresnel, 20A Locking Plug Installed	fr1th-62b
8" Theater Fresnel, Bare Wire	fr2th-50b
8" Theater Fresnel, 20A Male Stage Pin Installed	fr2th-22b
8" Theater Fresnel, 15A Edison Pug Installed	fr2th-42b
8" Theater Fresnel, 20A Locking Plug Installed	fr2th-62b

**Par Cans**

Par 38 Fixture with 3ft Cable, Black	par38-obl
Par 38 Fixture with 3ft Cable, Polished	par38-ocr
Par 56 Fixture with 3ft Cable, Black	par56-obl
Par 56 Fixture with 3ft Cable, Polished	par56-ocr
Par 56 Fixture with 3ft Cable, White	par56-owh
Par 64 Fixture with 3 ft Cable, Black	par64-obl
Par 64 Fixture with 3 ft Cable, Polished	par64-ocr
Par 64 Fixture with 3ft Cable, White	par64-owh

**Set Light**

Set Light with Bare Wire	000sl-50b
Set Light with Stage Pin	000sl-22b
Set Light with Edison	000sl-42b
Set Light with Locking Receptacle	000sl-62b

**Cyc Strip**

1 Cell, 1 Circuit, with Feed Thru	CS1C1-50b
1 Cell, 1 Circuit, with 2-3' Cords Terminated with Stage Pin	CS1C1-22b
1 Cell, 1 Circuit, with 2-3' Cords Terminated with Edison	CS1C1-42b
1 Cell, 1 Circuit, with 2-3' Cords Terminated with Locking Receptacle	CS1C1-62b
2 Cell, 1 Circuit, with Bare Leads	CS2C1-50b
2 Cell, 1 Circuit, with 2-3' Cords Terminated with Stage pin	CS2C1-22b
2 Cell, 1 Circuit, with 2-3' Cords Terminated with Edison	CS2C1-42b
2 Cell, 1 Circuit, with 2-3' Cords Terminated with Locking Receptacle	CS2C1-62b
2 Cell, 2 Circuit, with Feed Thru and Bare Leads	CS2C2-50b
2 Cell, 2 Circuit, with 4 - 3' Cords Terminated with Stage Pin	CS2C2-22b
2 Cell, 2 Circuit, with 4 - 3' Cords Terminated with Edison	CS2C2-42b
2 Cell, 2 Circuit, with 4 - 3' Cords Terminated with Locking Receptacle	CS2C2-62b
3 Cell, 3 Circuit, with Feed Thru and Bare Leads	CS3C3-50b
3 Cell, 3 Circuit, with 6 - 3' Cords Terminated with Stage Pin	CS3C3-22b
3 Cell, 3 Circuit, with 6 - 3' Cords Terminated with Edison	CS3C3-42b
3 Cell, 3 Circuit, with 6 - 3' Cords Terminated with Locking Receptacle	CS3C3-62b
4 Cell, 4 Circuit, with Feed Thru and Bare Leads	CS4C4-50b
4 Cell, 4 Circuit, with 6-3' Cords Terminated with Stage Pin	CS4C4-22b
4 Cell, 4 Circuit, with 6-3' Cords Terminated with Edison	CS4C4-42b
4 Cell, 4 Circuit, with 6-3' Cords Terminated with Locking Receptacle	CS4C4-62b
6 Cell, 3 Circuit, with Feed Thru and Bare Leads	CS6C3-50b
6 Cell, 3 Circuit, with 6 - 3' Cords Terminated with Stage Pin	CS6C3-22b
6 Cell, 3 Circuit, with 6 - 3' Cords Terminated with Edison	CS6C3-42b
6 Cell, 3 Circuit, with 6 - 3' Cords Terminated with Locking Receptacle	CS6C3-62b
8 Cell, 4 Circuit, with Bare Leads	CS8C4-50b
9 Cell, 3 Circuit, with Feed Thru and Bare Leads	CS9C3-50b

**Far Cyc**

1 Cell, with "C" Clamp, Bare Ends, 120V	1fc1v-50b
1 Cell, with "C" Clamp, Stage Pin Connector, 120V	1fc1v-22b
1 Cell, with "C" Clamp, 5-15P Connector, 120V	1fc1v-42b
1 Cell, with "C" Clamp, Locking Receptacle (L5-20P) Connector, 120V	1fc1v-62b
1 Cell, with "C" Clamp, Bare Ends, 220V	1fc2v-50b
2 Cell, with "C" Clamp, Bare Ends, 120V	2fc1v-50b
2 Cell, with "C" Clamp, Stage Pin Connector, 120V	2fc1v-22b
2 Cell, with "C" Clamp, 5-15P Connector, 120V	2fc1v-42b
2 Cell, with "C" Clamp, Locking Receptacle (L5-20P) Connector, 120V	2fc1v-62b
2 Cell, with "C" Clamp, Bare Ends, 220V	2fc2v-50b
3 Cell, with "C" Clamp, Bare Ends, 120V	3fc1v-50b
3 Cell, with "C" Clamp, Stage Pin Connector, 120V	3fc1v-22b
3 Cell, with "C" Clamp, 5-15P Connector, 120V	3fc1v-42b
3 Cell, with "C" Clamp, Locking Receptacle (L5-20P) Connector, 120V	3fc1v-62b
3 Cell, with "C" Clamp, Bare Ends, 220V	3fc2v-50b
4 Cell, with "C" Clamp, Bare Ends, 120V	4fc1v-50b
4 Cell, with "C" Clamp, Stage Pin Connector, 120V	4fc1v-22b
4 Cell, with "C" Clamp, 5-15P Connector, 120V	4fc1v-42b
4 Cell, with "C" Clamp, Locking Receptacle (L5-20P) Connector, 120V	4fc1v-62b
4 Cell, with "C" Clamp, Locking Receptacle (L5-20P) Connector, 220V	4fc2v-50b



## ENTERTAINMENT PACKAGED SYSTEMS

### ENTERTAINMENT PACKAGED SYSTEMS

Leviton's complete lighting systems provide everything you need to bring your performance to light. From the lamps to the color frames and gels, these are true turn-key systems. With several control packages, there is sure to be a system that's right for you. Need an eight-light configuration? Just add an expansion kit to your base system and you're set. It's the easy, cost-effective way to build just the system you need, when you need it.

- Easily Expandable by Adding More of Your Own Dimmers and Lights
- Three Kits to Choose from
- Color Frame Included at No Extra Cost
- Rolled Edges for Extra Strength
- Solid Steel Clutch on Par 56 Cans
- Black Finish

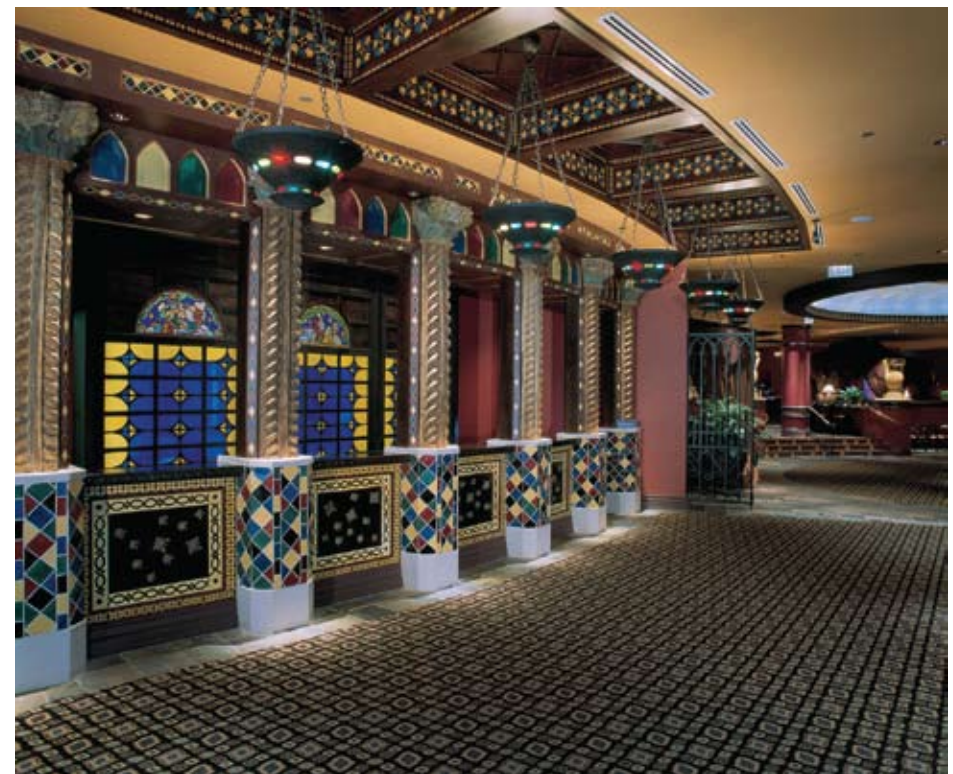


- |                     |           |
|---------------------|-----------|
| PAR56 Expansion Kit | honek-056 |
| PAR38 Expansion Kit | honek-038 |
| PAR56 Mini Kit      | honmk-056 |
| PAR56 Mini Kit      | honmk-038 |
| PAR56 Standard Kit  | honsk-056 |
| PAR38 Standard Kit  | honsk-038 |



	Mini	Standard	Expansion
Par 38 or 56	4	4	4
3004 Console	1	-	-
3008 Console	-	1	-
D4DMX	1	1	1

All systems include: stand, control cable, 4 color gels, 4 color frames and 4 lamps.



House of Blues, Architect: Lawrence B. Berkley & Associates  
Chicago, Illinois



Minneapolis Convention Center, Architect: Avid Elness Architects, Inc., Lighting Design: Schuler & Shook  
Minneapolis, Minnesota

**SKYHOOK**

The Skyhook is a unique retractable lighting support device designed specifically to support theatrical lighting instruments.

- Revolutionary hide-away retractable lighting support
- 1,000 pound load limit
- All wiring housed inside
- Discrete 4.5" x 4.5" plate is the only visible part
- ETL Listed
- Available with most receptacle types
- Optional Data I/O



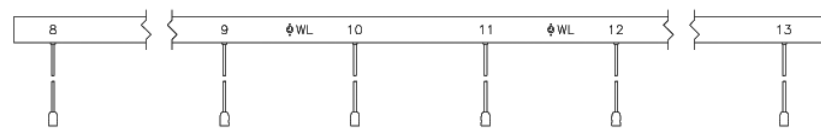
**Skyhook\***

w/(2) 15A PGB	sh000-020
w/(3) 15A PGB	sh000-030
w/(4) 15A PGB	sh000-040
w/(4) 20A Stage Pin	sh000-400
w/(4) 20A Locking Receptacles	sh000-004
w/(2) 15A PBG, (1) 5-Pin DMX Output	shd00-020
w/(3) 15A PBG, (1) 5-Pin DMX Output, (1) 5-Pin DMX Input	shdis-030
w/(1) 15A PBG, (1) 5-Pin DMX Output, (2) 20A Stage Pin	shd00-210
w/(3) 20A Locking Receptacles, (1) 5-Pin DMX Output, (1) 5-Pin DMX Input	shdis-003
w/(4) User Installed Receptacles	sh000-000
w/(3) User Installed Receptacles, (1) 5-Pin DMX Output	shd00-000
w/(3) User Installed Receptacles, (1) 5-Pin DMX Output, (1) 5-Pin DMX Input	shdis-000
w/(2) 15A PBG, (2) User Installed Receptacles	shxx0-020
w/(3) 15A PBG, (2) User Installed Receptacles	shxx0-030
w/(4) 15A PBG, (2) User Installed Receptacles	shxx0-040
w/(4) 20A Locking Receptacles, (2) User Installed Receptacles	shxx0-004

\* Consult factory for additional configurations. Sequential option available.

**DISTRIBUTION EQUIPMENT**

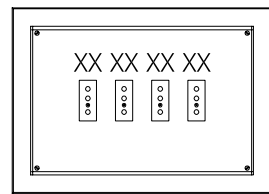
Leviton's distribution equipment is designed for use in theaters, television studios and other spaces where the distribution of power to lighting circuits is required. Providing ease of installation, ease of use, and robust durability, Leviton's distribution equipment is available in standard and complete custom options for any configuration.



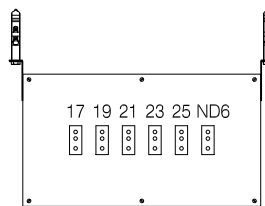
Connector Strip



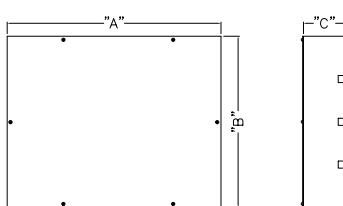
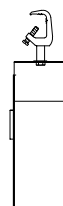
Floor Pockets



Wall Pocket (other sizes available)



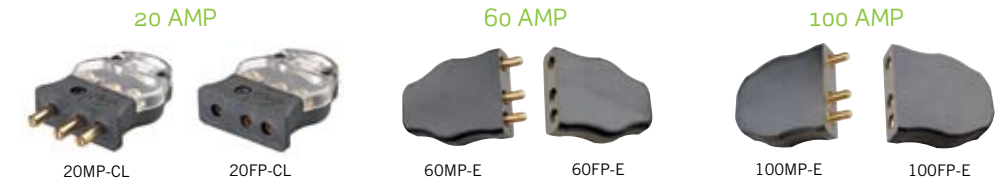
Plug Boxes (other styles available)



Gridiron Junction Boxes

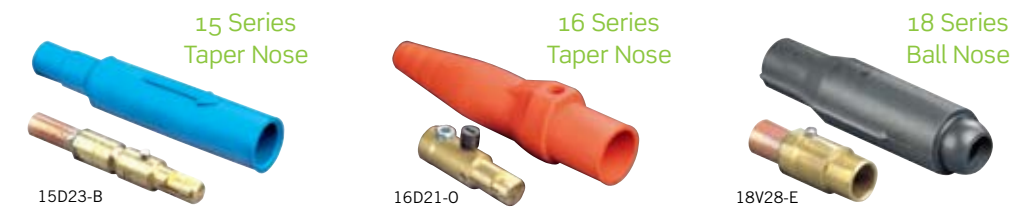
**ECT™ STAGE PIN DEVICES**

- Rugged Phenolic Housings
- One-Piece Brass Blades/Contacts for Superior Current Flow
- Slit In Male Pin Provides Spring Action — Compensates for Wear
- Made in the USA
- Intermateable and Compatible with Competitive Pin-Type Products



**ECT™ SINGLE POLE CAM DEVICES**

- Santoprene Insulator — Shatter and Crack Proof
- Slit and Cam Male Contact Design — Compensates for Wear
- Color-Coded Insulators for Easy Phase Identification



**NEMA & IEC CONNECTION DEVICES**

**NEMA - All Black**

- 15A & 20A Straight Blade
- 15A, 20A & 30A Locking
- PowerLight™ Available
- Super Tough Nylon
- One-Piece Connector Contacts
- Fast-Threading Combination Screws
- Solid Brass Plug Blades



2313-PLB & 2311-PLB

**NEMA Watertight Wetguard®**

- IP67 Watertight Industrial Connections
- 15A & 20A Straight Blade
- 15A, 20A & 30A Locking
- EPTR High Abuse Rubber
- Nickel-Plated Brass Blades and Contacts
- Watertight Cord Strain Relief System
- Double-Combo Screws



26W47-B & 27W47-B

**IEC Pin & Sleeve**

- 20A-100A Watertight & Splash Proof - Plugs & Connectors - Receptacles - Inlets
- 20A -100A Switches - Mechanical Interlock - Non-Fused & Fused
- Valox® Back Boxes
- Replacement Components



4100P-12W & 4100C-12W

Valox® is a registered trademark of GE.

**PORTABLE POWER & GFCI DEVICES**

**GFCI Cord Sets**

- 15A & 20A 125V; 15A & 20A 240V
- Automatic and Manual Reset Types
- Orange Power Status Indicator
- Yellow Cord 14/3 SJT
- Resistant to Surge, Noise & Corrosion
- Per 2003 UL Requirements



66591-25C

**Panel Mount GFCI with 16" Leads**

- 20A 125V
- Orange LED Indicator Light
- Weather-Resistant Housing & Test/Reset Buttons
- Resistant to Surge, Noise & Corrosion
- DIN-Rail Mountable GFCI Receptacles Also Available



36596



**"THE BOX"™ Portable Power Center**

- 6 GFCI Protected 20A 125V Straight Blade or Locking Receptacles
- GFCI Protected 30A 250V Locking Receptacle
- 50A 125/250V Non-NEMA Power Connections
- Meets OSHA Regulation 20, Subpart K Standards



PB101-SGF





**Leviton Manufacturing Co., Inc.**

20497 SW Teton Avenue, Tualatin, OR 97062

Telephone: 1-800-736-6682 • FAX: 503-404-5594 • Tech Line (6:00AM-4:00PM P.S.T. Monday-Friday): 1-800-959-6004

**Leviton Manufacturing of Canada, Ltd.**

165 Hymus Boulevard, Pointe Claire, Quebec H9R 1E9 • Telephone: 1-800-469-7890 • FAX: 1-800-563-1853

**Leviton S. de R.L. de C.V.**

Lago Tana 43, Mexico DF, Mexico CP 11290 • Tel. (+52) 55-5082-1040 • [www.leviton.com.mx](http://www.leviton.com.mx)

**Visit our Website at [www.leviton.com](http://www.leviton.com)**

© 2009 Leviton Manufacturing Co., Inc. All rights reserved. Subject to change without notice.

C-738A/J9-ak  
REV OCT 2009