



Cooper Lighting by Eaton offers a full line of steel and aluminum poles designed to support single or multiple luminaire configurations for commercial, architectural and utility applications.

Poles



Cooper Lighting by Eaton poles meet functional and aesthetic requirements for a wide array of outdoor lighting applications. From architectural features to structural enhancements, they provide the engineer or specifier with all of the options needed to meet project requirements.

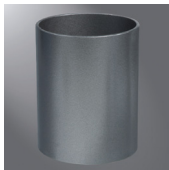


Water Feature | Photography: Guy Welch, Studio Burns
Commercial Site | Photography: Charles Plant, Creative Services
Private Residence | Photography: Charles Plant, Creative Services

STEEL



RSS Round Straight
Steel
Page 17-4



RTS Round Tapered
Steel
Page 17-5



SSS Square Straight
Steel
Page 17-6



STS Square Tapered
Steel
Page 17-7



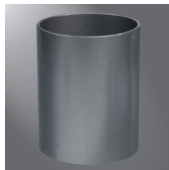
FTS Fluted Tapered
Steel
Page 17-8



HTS Hinged Tapered
Steel
Page 17-9



SSA Square Straight
Aluminum
Page 17-10



RSA Round Straight
Aluminum
Page 17-11

DECORATIVE



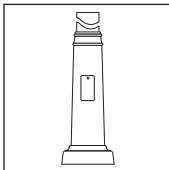
RTA Round Tapered
Aluminum
Page 17-12



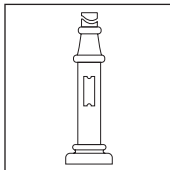
RTA Round Tapered
Aluminum with Elliptical
Arms
Page 17-13



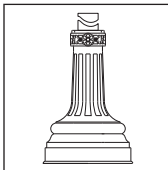
CFA Cruciform
Page 17-14



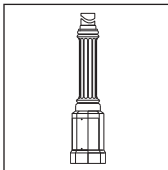
ASP Aspen
Page 17-15



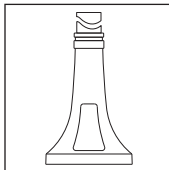
BWR Broadway
Page 17-15



CHI Charleston
Page 17-15

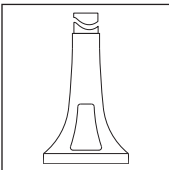


CPR Chesapeake
Page 17-15

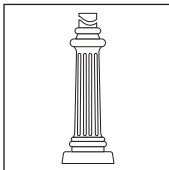


STL Seattle
Page 17-16

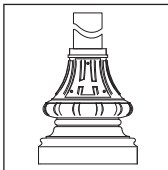
BRACKETS AND ADAPTER



TAM Tampa
Page 17-16



UBN Utica
Page 17-16

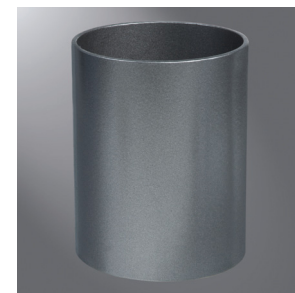
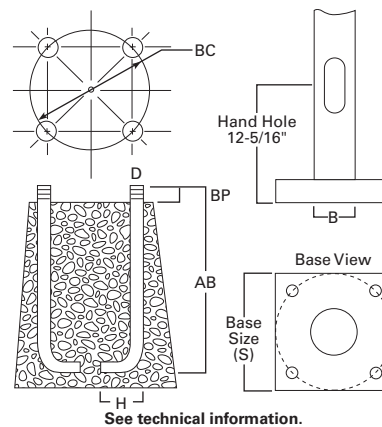


WA3 Washington
Page 17-16

Tenon and Adapters	17-17	Drill Patterns	17-27
Steel Pole Top Brackets	17-18	How-to-Order and Installation Instructions...	17-28
Internal Square Steel Slipfitter Brackets	17-19	Warranty and Product Use	17-29
Steel Spoke and Upsweep Brackets.....	17-21		
Aluminum Pole Top Brackets (Round Poles) ..	17-22		
Aluminum Pole Top Brackets (Square Poles) ..	17-23		
Wood Pole Top Brackets	17-24		
Wood and Concrete Pole Top Brackets	17-25		

FEATURES

- ASTM Grade steel base plate with ASTM A366 base cover
- Hand hole assembly 3" x 5" on 5" and 6" poles, 2" x 4" on 4" poles
- 10'-30' mounting heights
- Drilled or tenon (specify)



**RSS ROUND
STRAIGHT STEEL**

See technical information.

ORDERING INFORMATION

SAMPLE NUMBER: RSS4A20SF2XG

Product Family	Shaft Size (Inches) ¹	Wall Thickness (Inches)	Mounting Height (Feet)	Base Type	Finish
RSS=Round Straight Steel	4=4" 5=5" 6=6"	A=0.120" M=0.188"	10=10' 15=15' 20=20' 25=25' 30=30'	S=Square Steel Base	F=Dark Bronze G=Galvanized Steel J=Summit White K=Carbon Bronze L=Dark Platinum P=Primer Powder Coat R=Hartford Green S=Silver T=Graphite Metallic V=Grey W=White X=Custom Color Y=Black
Mounting Type			Number and Location of Arms	Options (Add as Suffix)	
2=2-3/8" O.D. Tenon (4" Long) 3=3-1/2" O.D. Tenon (5" Long) 4=4" O.D. Tenon (6" Long) 5=3" O.D. Tenon (4" Long) 6=2-3/8" O.D. Tenon (6" Long) 7=4" O.D. Tenon (10" Long) A=Type A Drilling C=Type C Drilling E=Type E Drilling			1=Single 2=2 at 180° 3=Triple ² 4=4 at 90° 5=2 at 90° 6=3 at 90° 7=2 at 120° X=None	A=1/2" Tapped Hub (Specify location desired) B=3/4" Tapped Hub (Specify location desired) C=Convenience Outlet ³ E=GFCI Convenience Outlet ³ G=Ground Lug H=Additional Hand Hole ⁴ L=Drilled for Bumper Glitter V=Vibration Dampener	
F=Type F Drilling G=Type G Drilling J=Type J Drilling K=Type K Drilling M=Type M Drilling R=Type R Drilling S=Standard Upsweep Arm Z=Type Z Drilling					

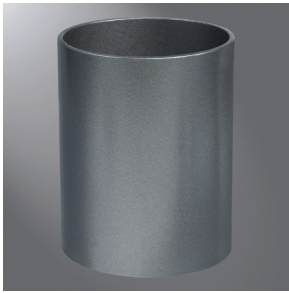
NOTES: 1. All shaft sizes nominal. 2. Square poles are 3 at 90°, round poles are 3 at 120°. 3. Outlet is located 4' above base and on same side of pole as hand hole, unless specified otherwise. Receptacle not included, provision only. 4. Additional hand hole is located 12" below pole top and 90° from standard hand hole location, unless otherwise specified.

TECHNICAL INFORMATION

Mounting Height (Feet)	Catalog Number	Wall Thickness (Inches)	Base Square (Inches)	Bolt Circle Diameter (Inches)	Bolt Projection (Inches)	Shaft Diameter at Base (Inches)	Anchor Bolt Diameter x Length x Hook	Net Weight (Pounds)
MH			S	BC	BP	B	D x AB x H	
10	RSS4A10S	0.120	10-1/2	11	4-1/2	4	3/4 x 25 x 3	82
15	RSS4A15S	0.120	10-1/2	11	4-1/2	4	3/4 x 25 x 3	113
20	RSS4A20S	0.120	10-1/2	11	4-1/2	4	3/4 x 25 x 3	144
20	RSS5M20S	0.188	10-1/2	11	4-1/2	5	3/4 x 25 x 3	26
25	RSS5M25S	0.188	10-1/2	11	4-1/2	5	3/4 x 25 x 3	288
30	RSS6M30S	0.188	12-1/2	12-1/2	5	6	1 x 36 x 4	419

WARNING: The use of unauthorized accessories such as banners, signs, cameras or pennants for which the pole was not designed voids the pole warranty from Eaton's Cooper Lighting business and may result in pole failure causing serious injury or property damage. Upon request, Eaton's Cooper Lighting business will supply information regarding total loading capacity. The pole warranty from Eaton's Cooper Lighting business is void unless poles are used and installed as a complete pole/luminaire combination. This warranty specifically excludes failure as the result of a third party act or omission, misuse, unanticipated uses, fatigue failure or similar phenomena resulting from induced vibration, harmonic oscillation or resonance associated with movement of air currents around the product.

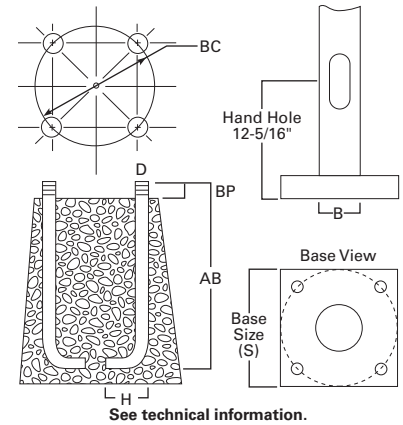
Specifications and dimensions subject to change without notice. Consult your Cooper Lighting representative or visit www.cooperlighting.com for available options, accessories and ordering information.



RTS ROUND TAPERED STEEL

FEATURES

- ASTM Grade steel base plate with ASTM A366 base cover
- Hand hole assembly 3" x 5" on RTS poles
- 20'-50' mounting heights
- Drilled or tenon (specify)



ORDERING INFORMATION

SAMPLE NUMBER: RTS8A30SF2XXG

Product Family	Shaft Size (Inches) ¹	Wall Thickness (Inches)	Mounting Height (Feet)	Base Type	Finish
RTS=Round Tapered Steel	6=6" 7=7" 8=8" 9=9" Steel; 6-3/4" Aluminum 0=10"	A=0.120" D=0.180"	20=20' 25=25' 30=30' 35=35' 39=39' 45=45' 50=50'	S=Square Steel Base	F=Dark Bronze G=Galvanized Steel J=Summit White K=Carbon Bronze L=Dark Platinum P=Primer Powder Coat R=Hartford Green S=Silver T=Graphite Metallic V=Grey W=White X=Custom Color Y=Black
Mounting Type		Number and Location of Arms		Arm Lengths (Feet)	Options (Add as Suffix)
2=2-3/8" O.D. Tenon (4" Long) 3=3-1/2" O.D. Tenon (5" Long) 4=4" O.D. Tenon (6" Long) 5=3" O.D. Tenon (4" Long) 6=2-3/8" O.D. Tenon (6" Long) 7=4" O.D. Tenon (10" Long) A=Type A Drilling C=Type C Drilling E=Type E Drilling		1=Single 2=2 at 180° 3=Triple ² 4=4 at 90° 5=2 at 90° 6=3 at 90° 7=2 at 120° X=None		X=None	A=1/2" Tapped Hub (Specify location desired) B=3/4" Tapped Hub (Specify location desired) C=Convenience Outlet ³ E=GFCI Convenience Outlet ³ G=Ground Lug H=Additional Hand Hole ⁴ L=Drilled for Bumper Glitter V=Vibration Dampener
F=Type F Drilling G=Type G Drilling J=Type J Drilling K=Type K Drilling M=Type M Drilling R=Type R Drilling S=Standard Upsweep Arm Z=Type Z Drilling					

NOTES: 1. All shaft sizes nominal. 2. Square poles are 3 at 90°, round poles are 3 at 120°. 3. Outlet is located 4' above base and on same side of pole as hand hole, unless specified otherwise. Receptacle not included, provision only. 4. Additional hand hole is located 12" below pole top and 90° from standard hand hole location, unless otherwise specified.

TECHNICAL INFORMATION

Mounting Height (Feet)	Catalog Number	Wall Thickness (Inches)	Base Square (Inches)	Bolt Circle Diameter (Inches)	Bolt Projection (Inches)	Shaft Diameter at Base (Inches)	Shaft Diameter at Top (Inches)	Anchor Bolt Diameter x Length x Hook	Net Weight (Pounds)
			S	BC	BP	B		D x AB x H	
20	RTS6A20S	0.120	10-1/2	11	4-1/2	6.3	3.5	3/4 x 25 x 3	173
25	RTS7A25S	0.120	10-1/2	11	4-1/2	7	3.5	3/4 x 25 x 3	214
30	RTS8A30S	0.120	12-1/2	12-1/2	5	7.7	3.5	1 x 36 x 4	290
35	RTS8A35S	0.120	12-1/2	12-1/2	5	8.4	3.5	1 x 36 x 4	342
35	RTS9D35S	0.180	12-1/2	12-1/2	5	8.4	3.5	1 x 36 x 4	482
39	RTS9A39S	0.120	12-1/2	12-1/2	5	8.9	3.5	1 x 36 x 4	341
39	RTS9D39S	0.180	12-1/2	12-1/2	5	8.9	3.5	1 x 36 x 4	536
45	RTS0A45S*	0.120	13-1/2	13-1/2	5	10.2	4.2	1 x 36 x 4	546
45	RTS0D45S*	0.180	13-1/2	13-1/2	6	10.2	4.2	1-1/4 x 42 x 6	682
50	RTS0A50S*	0.120	13-1/2	13-1/2	5	10.2	3.5	1 x 36 x 4	550
50	RTS0D50S*	0.180	13-1/2	13-1/2	6	10.2	3.5	1-1/4 x 42 x 6	719

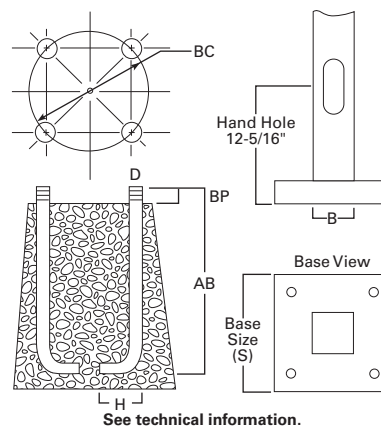
NOTE: * 2 piece pole.

WARNING: The use of unauthorized accessories such as banners, signs, cameras or pennants for which the pole was not designed voids the pole warranty from Eaton's Cooper Lighting business and may result in pole failure causing serious injury or property damage. Upon request, Eaton's Cooper Lighting business will supply information regarding total loading capacity. The pole warranty from Eaton's Cooper Lighting business is void unless poles are used and installed as a complete pole/luminaire combination. This warranty specifically excludes failure as the result of a third party act or omission, misuse, unanticipated uses, fatigue failure or similar phenomena resulting from induced vibration, harmonic oscillation or resonance associated with movement of air currents around the product.

Specifications and dimensions subject to change without notice. Consult your Cooper Lighting representative or visit www.cooperlighting.com for available options, accessories and ordering information.

FEATURES

- ASTM Grade steel base plate with ASTM A366 base cover
- Hand hole assembly 3" x 5" on 5" and 6" pole; and 2" x 4" on 4" pole
- 10'-39' mounting heights
- Drilled or tenon (specify)



**SSS SQUARE
STRAIGHT STEEL**

See technical information.

ORDERING INFORMATION

SAMPLE NUMBER: SSS5A20SFM1XG

Product Family	Shaft Size (Inches) ¹	Wall Thickness (Inches)	Mounting Height (Feet)	Base Type	Finish
SSS=Square Straight Steel	4=4" 5=5" 6=6"	A=0.120" M=0.188" X=0.250"	10=10' 15=15' 20=20' 25=25' 30=30' 35=35' 39=39'	S=Square Steel Base	F=Dark Bronze G=Galvanized Steel J=Summit White K=Carbon Bronze L=Dark Platinum P=Primer Powder Coat R=Hartford Green S=Silver T=Graphite Metallic V=Grey W=White X=Custom Color Y=Black
Mounting Type		Number and Location of Arms		Arm Lengths (Feet)	Options (Add as Suffix)
2=2-3/8" O.D. Tenon (4" Long) 3=3-1/2" O.D. Tenon (5" Long) 4=4" O.D. Tenon (6" Long) 5=3" O.D. Tenon (4" Long) 6=2-3/8" O.D. Tenon (6" Long) 7=4" O.D. Tenon (10" Long) A=Type A Drilling C=Type C Drilling		1=Single 2=2 at 180° 3=Triple ² 4=4 at 90° 5=2 at 90° X=None		X=None	A=1/2" Tapped Hub (Specify location desired) B=3/4" Tapped Hub (Specify location desired) C=Convenience Outlet ³ E=GFCI Convenience Outlet ³ G=Ground Lug H=Additional Hand Hole ⁴ L=Drilled for Bumper Glitter V=Vibration Dampener

NOTES: 1. All shaft sizes nominal. 2. Square poles are 3 at 90°, round poles are 3 at 120°. 3. Outlet is located 4' above base and on same side of pole as hand hole, unless specified otherwise. Receptacle not included, provision only. 4. Additional hand hole is located 12" below pole top and 90° from standard hand hole location, unless otherwise specified.

TECHNICAL INFORMATION

Mounting Height (Feet)	Catalog Number	Wall Thickness (Inches)	Base Square (Inches)	Bolt Circle Diameter (Inches)	Bolt Projection (Inches)	Shaft Size (Inches)	Anchor Bolt Diameter x Length x Hook	Net Weight (Pounds)
MH			S	BC	BP	B	D x AB x H	
10	SSS4A10S	0.120	10-1/2	11	4-1/2	4	3/4 x 25 x 3	96
15	SSS4A15S	0.120	10-1/2	11	4-1/2	4	3/4 x 25 x 3	133
20	SSS4A20S	0.120	10-1/2	11	4-1/2	4	3/4 x 25 x 3	152
25	SSS4A25S	0.120	10-1/2	11	4-1/2	4	3/4 x 25 x 3	208
20	SSS5A20S	0.120	10-1/2	11	4-1/2	5	3/4 x 25 x 3	202
25	SSS5A25S	0.120	10-1/2	11	4-1/2	5	3/4 x 25 x 3	248
30	SSS5A30S	0.120	10-1/2	11	4-1/2	5	3/4 x 25 x 3	293
35	SSS5M35S	0.188	10-1/2	11	4-1/2	5	3/4 x 25 x 3	480
25	SSS6A25S	0.120	12-1/2	12-1/2	5	6	1 x 36 x 4	295
30	SSS6A30S	0.120	12-1/2	12-1/2	5	6	1 x 36 x 4	347
30	SSS6M30S	0.188	12-1/2	12-1/2	5	6	1 x 36 x 4	505
35	SSS6M35S	0.188	12-1/2	12-1/2	5	6	1 x 36 x 4	584
35	SSS6X35S	0.250	12-1/2	12-1/2	5	6	1 x 36 x 4	696
39	SSS6M39S	0.188	12-1/2	12-1/2	5	6	1 x 36 x 4	647
39	SSS6X39S	0.250	12-1/2	12-1/2	5	6	1 x 36 x 4	822

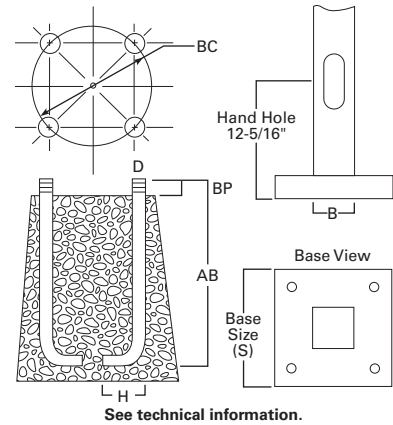
WARNING: The use of unauthorized accessories such as banners, signs, cameras or pennants for which the pole was not designed voids the pole warranty from Eaton's Cooper Lighting business and may result in pole failure causing serious injury or property damage. Upon request, Eaton's Cooper Lighting business will supply information regarding total loading capacity. The pole warranty from Eaton's Cooper Lighting business is void unless poles are used and installed as a complete pole/luminaire combination. This warranty specifically excludes failure as the result of a third party act or omission, misuse, unanticipated uses, fatigue failure or similar phenomena resulting from induced vibration, harmonic oscillation or resonance associated with movement of air currents around the product.

Specifications and dimensions subject to change without notice. Consult your Cooper Lighting representative or visit www.cooperlighting.com for available options, accessories and ordering information.



STS SQUARE
TAPERED STEEL

- FEATURES**
- ASTM Grade steel base plate with ASTM A366 base cover
 - Hand hole assembly 3" x 5" on STS poles
 - 20'-50' mounting heights
 - Drilled or tenon (specify)



ORDERING INFORMATION

SAMPLE NUMBER: STS5A20SF21XE

Product Family	Shaft Size (Inches) ¹	Wall Thickness (Inches)	Mounting Height (Feet)	Base Type	Finish
STS=Square Tapered Steel	5=5" 6=6" 7=7" 8=8" 9=9" Steel; 6-3/4" Aluminum	A=0.120" D=0.180"	20=20' 25=25' 30=30' 35=35' 39=39' 45=45' 50=50'	S=Square Steel Base	F=Dark Bronze G=Galvanized Steel J=Summit White K=Carbon Bronze L=Dark Platinum P=Primer Powder Coat R=Hartford Green S=Silver T=Graphite Metallic V=Grey W=White X=Custom Color Y=Black
Mounting Type		Number and Location of Arms		Arm Lengths (Feet)	Options (Add as Suffix)
2=2-3/8" O.D. Tenon (4" Long) 3=3-1/2" O.D. Tenon (5" Long) 4=4" O.D. Tenon (6" Long) 5=3" O.D. Tenon (4" Long) 6=2-3/8" O.D. Tenon (6" Long) 7=4" O.D. Tenon (10" Long) A=Type A Drilling C=Type C Drilling		E=Type E Drilling F=Type F Drilling G=Type G Drilling J=Type J Drilling K=Type K Drilling M=Type M Drilling R=Type R Drilling Z=Type Z Drilling		1=Single 2=2 at 180° 3=Triple ² 4=4 at 90° 5=2 at 90° X=None	X=None
					A=1/2" Tapped Hub (Specify location desired) B=3/4" Tapped Hub (Specify location desired) C=Convenience Outlet ³ E=GFCI Convenience Outlet ³ G=Ground Lug H=Additional Hand Hole ⁴ L=Drilled for Bumper Glitter V=Vibration Damper

NOTES: 1. All shaft sizes nominal. 2. Square poles are 3 at 90°, round poles are 3 at 120°. 3. Outlet is located 4' above base and on same side of pole as hand hole, unless specified otherwise. Receptacle not included, provision only. 4. Additional hand hole is located 12" below pole top and 90° from standard hand hole location, unless otherwise specified.

TECHNICAL INFORMATION

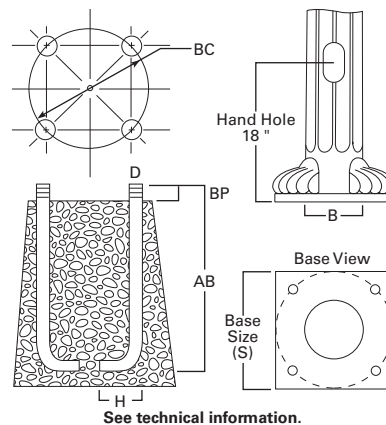
Mounting Height (Feet)	Catalog Number	Wall Thickness (Inches)	Base Square (Inches)	Bolt Circle Diameter (Inches)	Bolt Projection (Inches)	Shaft Diameter at Base (Inches)	Shaft Taper (Inches/Feet)	Anchor Bolt Diameter x Length x Hook	Net Weight (Pounds)
MH			S	BC	BP	B		D x AB x H	
20	STS5A20S	0.120	10-3/4	10-3/4	4	5.25	0.11	1 x 36 x 4	155
25	STS6A25S	0.120	11-1/2	12	4-1/8	6.00	0.11	1 x 36 x 4	205
30	STS6A30S	0.120	11-7/8	12-1/2	4-1/8	6.41	0.11	1 x 36 x 4	260
30	STS7D30S	0.180	12-5/8	13-1/2	4-1/2	7.13	0.11	1 x 36 x 4	431
35	STS7A35S	0.120	12-1/4	13	4-1/8	6.81	0.11	1 x 36 x 4	305
35	STS7D35S	0.180	12-5/8	13-1/2	4-1/2	7.13	0.11	1 x 36 x 4	475
39	STS7A39S	0.120	12-5/8	13-1/2	4-1/8	7.18	0.11	1 x 36 x 4	345
39	STS7D39S	0.180	12-5/8	13-1/2	4-1/2	7.13	0.11	1 x 36 x 4	500
45	STS8D45S	0.180	13-3/8	14-1/2	4-1/2	7.88	0.11	1 x 36 x 4	620
50	STS9D50S	0.180	15-1/2	16	5	8.81	0.11	1-1/4 x 42 x 6	780

WARNING: The use of unauthorized accessories such as banners, signs, cameras or pennants for which the pole was not designed voids the pole warranty from Eaton's Cooper Lighting business and may result in pole failure causing serious injury or property damage. Upon request, Eaton's Cooper Lighting business will supply information regarding total loading capacity. The pole warranty from Eaton's Cooper Lighting business is void unless poles are used and installed as a complete pole/luminaire combination. This warranty specifically excludes failure as the result of a third party act or omission, misuse, unanticipated uses, fatigue failure or similar phenomena resulting from induced vibration, harmonic oscillation or resonance associated with movement of air currents around the product.

Specifications and dimensions subject to change without notice. Consult your Cooper Lighting representative or visit www.cooperlighting.com for available options, accessories and ordering information.

FEATURES

- ASTM Grade steel base plate with decorative cast aluminum nut covers
- ASTM 595 steel fluted shaft
- Hand hole assembly 4" x 6"
- Decorative cast aluminum pole cap attached using three set screws
- Luminaire arm is 2-3/8" tubing available in 4', 6' and 8' lengths
- 21'-41' mounting heights



See technical information.

**FTS FLUTED
TAPERED STEEL****ORDERING INFORMATION**

SAMPLE NUMBER: FTS8A31SFP14V

Product Family	Shaft Size (Inches) ¹	Wall Thickness (Inches)	Mounting Height (Feet)	Base Type	Finish
FTS=Fluted Tapered Steel	6=6" 8=8" 9=9" Steel; 6-3/4" Aluminum	A=0.120" D=0.180"	21=21' 31=31' 41=41'	S=Square Steel Base	F=Dark Bronze G=Galvanized Steel L=Dark Platinum P=Primer Powder Coat R=Hartford Green S=Silver T=Graphite Metallic V=Grey W=White X=Custom Color Y=Black
Mounting Type	Number and Location of Arms		Arm Lengths (Feet)	Options (Add as Suffix)	
P=Scroll Arm S=Standard Upsweep Arm	1=Single 2=2 at 180° 3=Triple ² 4=4 at 90°	5=2 at 90° 6=3 at 90° 7=2 at 120° X=None	4=4' 6=6' 8=8' X=None	A=1/2" Tapped Hub (Specify location desired) B=3/4" Tapped Hub (Specify location desired) C=Convenience Outlet ³ E=GFCI Convenience Outlet ³	G=Ground Lug H=Additional Hand Hole ⁴ L=Drilled for Bumper Glitter V=Vibration Dampener

NOTES: 1. All shaft sizes nominal. 2. Square poles are 3 at 90°, round poles are 3 at 120°. 3. Outlet is located 4' above base and on same side of pole as hand hole, unless specified otherwise. Receptacle not included, provision only. 4. Additional hand hole is located 12" below pole top and 90° from standard hand hole location, unless otherwise specified.

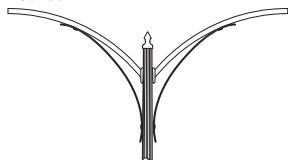
TECHNICAL INFORMATION

Mounting Height (Feet)	Catalog Number	Base Square (Inches)	Bolt Circle Diameter (Inches)	Bolt Projection (Inches)	Shaft Diameter at Base (Inches)	Anchor Bolt Diameter x Length x Hook	Net Weight (Pounds)	Arm Length (Feet)
MH		S	BC	BP	B	D x AB x H		
21	FTS6A21SFP14	10	9-1/2	3-3/4	6-1/2	1 x 36 x 4	180	4
31	FTS8A31SFP14	11-1/2	11	4	8	1 x 36 x 4	295	4
31	FTS8A31SFP18	11-1/2	11	4	8	1 x 36 x 4	335	8
31	FTS8D31SFP24	11-1/2	11	4	8	1 x 36 x 4	335	4
31	FTS8A31SFP26	11-1/2	11	4	8	1 x 36 x 4	355	6
31	FTS8D31SFP26	11-1/2	11	4	8	1 x 36 x 4	355	6
31	FTS8A31SFP28	11-1/2	11	4	8	1 x 36 x 4	375	8
31	FTS8D31SFP28	11-1/2	11	4	8	1 x 36 x 4	375	8
41	FTS9A41SFP14	13	13	5-1/4	9-1/2	1-1/4 x 42 x 6	395	4
41	FTS9D41SFP14	13	13	5-1/4	9-1/2	1-1/4 x 42 x 6	395	4
41	FTS9A41SFP16	13	13	5-1/4	9-1/2	1-1/4 x 42 x 6	415	6
41	FTS9D41SFP16	13	13	5-1/4	9-1/2	1-1/4 x 42 x 6	415	6
41	FTS9A41SFP18	13	13	5-1/4	9-1/2	1-1/4 x 42 x 6	435	8
41	FTS9D41SFP18	13	13	5-1/4	9-1/2	1-1/4 x 42 x 6	435	8
41	FTS9A41SFP24	13	13	5-1/4	9-1/2	1-1/4 x 42 x 6	420	4
41	FTS9D41SFP24	13	13	5-1/4	9-1/2	1-1/4 x 42 x 6	420	4
41	FTS9A41SFP26	13	13	5-1/4	9-1/2	1-1/4 x 42 x 6	440	6
41	FTS9D41SFP26	13	13	5-1/4	9-1/2	1-1/4 x 42 x 6	440	6

ARMS

(Configurations available on request.
Consult factory.)

2 at 180°



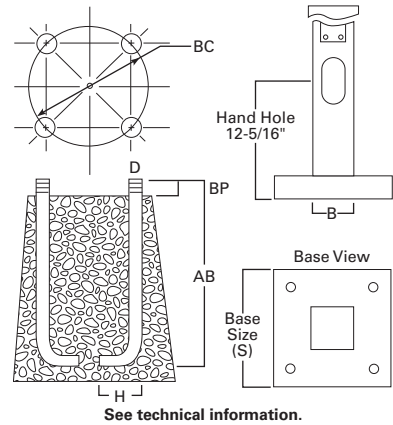
WARNING: The use of unauthorized accessories such as banners, signs, cameras or pennants for which the pole was not designed voids the pole warranty from Eaton's Cooper Lighting business and may result in pole failure causing serious injury or property damage. Upon request, Eaton's Cooper Lighting business will supply information regarding total loading capacity. The pole warranty from Eaton's Cooper Lighting business is void unless poles are used and installed as a complete pole/luminaire combination. This warranty specifically excludes failure as the result of a third party act or omission, misuse, unanticipated uses, fatigue failure or similar phenomena resulting from induced vibration, harmonic oscillation or resonance associated with movement of air currents around the product.

Specifications and dimensions subject to change without notice. Consult your Cooper Lighting representative or visit www.cooperlighting.com for available options, accessories and ordering information.



HTS HINGED
TAPERED STEEL

- FEATURES**
- ASTM Grade steel base plate with ASTM A366 base cover
 - Hand hole assembly 3" x 5" on all HTS poles
 - 20'-39' mounting heights
 - Drilled or tenon (specify)



See technical information.

ORDERING INFORMATION

SAMPLE NUMBER: HTS6A25SF21XE

Product Family	Shaft Size (Inches) ¹	Wall Thickness (Inches)	Mounting Height (Feet)	Base Type	Finish
HTS=Hinged Tapered Steel	6=6" 7=7"	A=0.120" D=0.180"	20=20' 25=25' 30=30' 35=35' 39=39'	S=Square Steel Base	F=Dark Bronze G=Galvanized Steel J=Summit White K=Carbon Bronze L=Dark Platinum P=Primer Powder Coat R=Hartford Green T=Graphite Metallic V=Grey W=White X=Custom Color Y=Black
Mounting Type		Number and Location of Arms		Arm Lengths (Feet)	Options (Add as Suffix)
2=2-3/8" O.D. Tenon (4" Long) 3=3-1/2" O.D. Tenon (5" Long) 4=4" O.D. Tenon (6" Long) 5=3" O.D. Tenon (4" Long) 6=2-3/8" O.D. Tenon (6" Long) 7=4" O.D. Tenon (10" Long) A=Type A Drilling C=Type C Drilling		E=Type E Drilling F=Type F Drilling G=Type G Drilling J=Type J Drilling K=Type K Drilling M=Type M Drilling R=Type R Drilling Z=Type Z Drilling		1=Single 2=2 at 180° 3=Triple ² 4=4 at 90° 5=2 at 90° X=None	X=None A=1/2" Tapped Hub (Specify location desired) B=3/4" Tapped Hub (Specify location desired) C=Convenience Outlet ³ E=GFCI Convenience Outlet ³ G=Ground Lug H=Additional Hand Hole ⁴ HSSLDW=Lowering Device L=Drilled for Bumper Glitter (Specify location desired) V=Vibration Dampener

NOTES: 1. All shaft sizes nominal. 2. Square poles are 3 at 90°, round poles are 3 at 120°. 3. Outlet is located 4' above base and on same side of pole as hand hole, unless specified otherwise. Receptacle not included, provision only. 4. Additional hand hole is located 12" below pole top and 90° from standard hand hole location, unless otherwise specified.

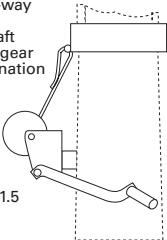
TECHNICAL INFORMATION

Mounting Height (Feet)	Catalog Number	Wall Thickness (Inches)	Base Square (Inches)	Bolt Circle Diameter (Inches)	Bolt Projection (Inches)	Shaft Size at Base (Inches)	Shaft Taper (Inches/Feet)	Anchor Bolt Diameter x Length x Hook	Net Weight (Pounds)
MH			S	BC	BP	B		D x AB x H	
25	HTS6A25S	0.120	11-7/8	12-1/2	4-1/8	6.41	0.11	1 x 36 x 4	355
30	HTS6A30S	0.120	11-7/8	12-1/2	4-1/8	6.41	0.11	1 x 36 x 4	440
35	HTS7A35S	0.120	12-5/8	13-1/2	4-1/8	7.18	0.11	1 x 36 x 4	540
35	HTS7D35S	0.180	12-5/8	13-1/2	4-1/2	7.13	0.11	1 x 36 x 4	700
39	HTS7A39S	0.120	12-5/8	13-1/2	4-1/8	7.18	0.11	1 x 36 x 4	555
39	HTS7D39S	0.180	12-5/8	13-1/2	4-1/2	7.13	0.11	1 x 36 x 4	740

LOWERING DEVICE

HSSLDW
Lowering Device No. HSSLDW is required for use with all hinged poles from Eaton's Cooper Lighting business. This device consists of a winch, arm and a rotating steel drum with a two-way ratchet lock and 35' of stranded flexible aircraft cable. The drum has a gear ratio of 51 to 1. Combination arm, gear and lever provide a mechanical advantage of 30 to 1 and permits a direct load lift of up to 1300 pounds.

Net Weight (pounds) 11.5

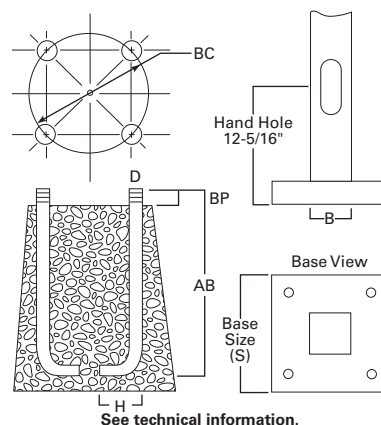


WARNING: The use of unauthorized accessories such as banners, signs, cameras or pennants for which the pole was not designed voids the pole warranty from Eaton's Cooper Lighting business and may result in pole failure causing serious injury or property damage. Upon request, Eaton's Cooper Lighting business will supply information regarding total loading capacity. The pole warranty from Eaton's Cooper Lighting business is void unless poles are used and installed as a complete pole/luminaire combination. This warranty specifically excludes failure as the result of a third party act or omission, misuse, unanticipated uses, fatigue failure or similar phenomena resulting from induced vibration, harmonic oscillation or resonance associated with movement of air currents around the product.

Specifications and dimensions subject to change without notice. Consult your Cooper Lighting representative or visit www.cooperlighting.com for available options, accessories and ordering information.

FEATURES

- Straight square shaft 6005-T6 aluminum alloy polished
- 356-T6 cast aluminum alloy base with aluminum knock-in bolt covers
- 8'-35' mounting heights
- Drilled or tenon (specify)



**SSA SQUARE
STRAIGHT
ALUMINUM**

ORDERING INFORMATION

SAMPLE NUMBER: SSA4T08WXM1G

Product Family	Shaft Size (Inches) ¹	Wall Thickness (Inches)	Mounting Height (Feet)	Base Type	Finish
SSA=Square Straight Aluminum	4=4" 5=5" 6=6" 9=9" Steel; 6-3/4" Aluminum	T=0.125" M=0.188" X=0.250"	08=8' 10=10' 12=12' 15=15' 18=18' 20=20' 25=25' 30=30' 35=35'	W=Aluminum (Square and Cruciform Poles)	A=Satin Brushed Aluminum B=Clear Anodized C=Dark Bronze Anodized D=Black Anodized E=Medium Bronze Anodized F=Dark Bronze J=Summit White K=Carbon Bronze L=Dark Platinum P=Primer Powder Coat R=Hartford Green S=Silver T=Graphite Metallic V=Grey W=White X=Custom Color Y=Black
Mounting Type		Number and Location of Arms		Options (Add as Suffix)	
2=2-3/8" O.D. Tenon (4" Long) 3=3-1/2" O.D. Tenon (5" Long) 4=4" O.D. Tenon (6" Long) 5=3" O.D. Tenon (4" Long) 6=2-3/8" O.D. Tenon (6" Long) 7=4" O.D. Tenon (10" Long) A=Type A Drilling C=Type C Drilling		E=Type E Drilling F=Type F Drilling G=Type G Drilling J=Type J Drilling K=Type K Drilling M=Type M Drilling R=Type R Drilling		1=Single 2=2 at 180° 3=Triple ² 4=4 at 90° 5=2 at 90° X=None	
				A=1/2" Tapped Hub (Specify location desired) B=3/4" Tapped Hub (Specify location desired) C=Convenience Outlet ³ E=GFCI Convenience Outlet ³ F=Vibration Pad G=Ground Lug H=Additional Hand Hole ⁴ L=Drilled for Bumper Glitter (Specify location desired) V=Vibration Dampener	

NOTES: 1. All shaft sizes nominal. 2. Square poles are 3 at 90°, round poles are 3 at 120°. 3. Outlet is located 4' above base and on same side of pole as hand hole, unless specified otherwise. Receptacle not included, provision only. 4. Additional hand hole is located 12" below pole top and 90° from standard hand hole location, unless otherwise specified.

TECHNICAL INFORMATION

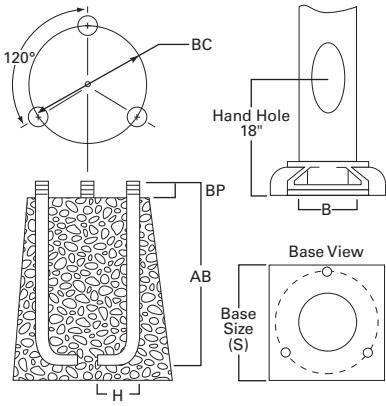
Mounting Height (Feet)	Catalog Number	Wall Thickness (Inches)	Base Square (Inches)	Bolt Circle Diameter (Inches)	Bolt Projection (Inches)	Shaft Size (Inches)	Anchor Bolt Diameter x Length x Hook	Net Weight (Pounds)
MH			S	BC	BP	B	D x AB x H	
8	SSA4T08W	0.125	10	9	3-1/8	4	3/4 x 17 x 3	23
12	SSA4T12W	0.125	10	9	3-1/8	4	3/4 x 17 x 3	32
15	SSA4T15W	0.125	10	9	3-1/8	4	3/4 x 17 x 3	39
15	SSA4M15W	0.188	10	9	3-1/8	4	3/4 x 17 x 3	55
15	SSA5T15W	0.125	11-9/16	11	3-1/4	5	3/4 x 17 x 3	52
18	SSA4T18W	0.125	10	9	3-1/8	4	3/4 x 17 x 3	46
18	SSA4M18W	0.188	10	9	3-1/8	4	3/4 x 17 x 3	66
18	SSA5T18W	0.125	11-9/16	11	3-1/4	5	3/4 x 17 x 3	61
18	SSA5M18W	0.188	11-9/16	11	3-1/4	5	3/4 x 17 x 3	85
20	SSA4M20W	0.188	10	9	3-1/8	4	3/4 x 17 x 3	72
20	SSA5T20W	0.125	11-9/16	11	3-1/4	5	3/4 x 17 x 3	66
20	SSA5M20W	0.188	11-9/16	11-1/8	3-1/4	5	3/4 x 17 x 3	94
25	SSA5M25W	0.188	11-1/2	11	3-1/4	5	3/4 x 17 x 3	115
25	SSA6M25W	0.188	12-3/4	12-1/2	4	6	1 x 36 x 4	140
30	SSA6X30W	0.250	12-3/4	12-1/2	4	6	1 x 36 x 4	215
30	SSA9X30W	0.250	15-1/8	14-5/8	4-1/8	6-3/4	1 x 36 x 4	237
35	SSA9X35W	0.250	15-1/8	14-5/8	4-1/8	6-3/4	1 x 36 x 4	274

WARNING: The use of unauthorized accessories such as banners, signs, cameras or pennants for which the pole was not designed voids the pole warranty from Eaton's Cooper Lighting business and may result in pole failure causing serious injury or property damage. Upon request, Eaton's Cooper Lighting business will supply information regarding total loading capacity. The pole warranty from Eaton's Cooper Lighting business is void unless poles are used and installed as a complete pole/luminaire combination. This warranty specifically excludes failure as the result of a third party act or omission, misuse, unanticipated uses, fatigue failure or similar phenomena resulting from induced vibration, harmonic oscillation or resonance associated with movement of air currents around the product.

Specifications and dimensions subject to change without notice. Consult your Cooper Lighting representative or visit www.cooperlighting.com for available options, accessories and ordering information.



- FEATURES**
- Straight round shaft 6063-T6 aluminum alloy polished
 - Cast aluminum alloy base with aluminum bolt covers
 - Anchor bolt per ASTM A576
 - 8'-20' mounting heights
 - Drilled or tenon (specify)



See technical information.

RSA ROUND
STRAIGHT
ALUMINUM

ORDERING INFORMATION

SAMPLE NUMBER: RSA4T08NAA1V

Product Family	Shaft Size (Inches) ¹	Wall Thickness (Inches)	Mounting Height (Feet)	Base Type	Finish	
RSA=Round Straight Aluminum	4=4" 5=5"	T=0.125" M=0.188"	08=8' 10=10' 12=12' 15=15' 18=18' 20=20'	A=Aluminum (4-Bolt) ² N=Aluminum (3-Bolt)	A=Satin Brushed Aluminum B=Clear Anodized C=Dark Bronze Anodized D=Black Anodized E=Medium Bronze Anodized F=Dark Bronze J=Summit White K=Carbon Bronze L=Dark Platinum	P=Primer Powder Coat R=Hartford Green S=Silver T=Graphite Metallic V=Grey W=White X=Custom Color Y=Black
Mounting Type		Number and Location of Arms		Options (Add as Suffix)		
2=2-3/8" O.D. Tenon (4" Long) 3=3-1/2" O.D. Tenon (5" Long) 4=4" O.D. Tenon (6" Long) 5=3" O.D. Tenon (4" Long) 6=2-3/8" O.D. Tenon (6" Long) 7=4" O.D. Tenon (10" Long) A=Type A Drilling C=Type C Drilling E=Type E Drilling		F=Type F Drilling G=Type G Drilling J=Type J Drilling K=Type K Drilling M=Type M Drilling R=Type R Drilling S=Standard Upsweep Arm W=Truss Arm (Clamp Mounted) Z=Type Z Drilling		1=Single 2=2 at 180° 3=Triple ³ 4=4 at 90° 5=2 at 90° 6=3 at 90° 7=2 at 120° X=None		
				A=1/2" Tapped Hub (Specify location desired) B=3/4" Tapped Hub (Specify location desired) C=Convenience Outlet ⁴ E=GFCI Convenience Outlet ⁴ F=Vibration Pad G=Ground Lug H=Additional Hand Hole ⁵ L=Drilled for Bumper Glitter V=Vibration Dampener		

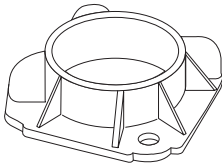
NOTES: 1. All shaft sizes nominal. 2. Base cover not included (order as option). 3. Square poles are 3 at 90°, round poles are 3 at 120°. 4. Outlet is located 4' above base and on same side of pole as hand hole, unless specified otherwise. Receptacle not included, provision only. 5. Additional hand hole is located 12" below pole top and 90° from standard hand hole location, unless otherwise specified.

TECHNICAL INFORMATION

Mounting Height (Feet)	Catalog Number	Wall Thickness (Inches)	Bolt Circle Diameter (Inches)	Bolt Projection (Inches)	Shaft Size (Inches)	Anchor Bolt Diameter x Length x Hook	Net Weight (Pounds)
MH			BC	BP	B	D x AB x H	
8	RSA4T08N	0.125	6-3/4	3-1/4	4	3/4 x 17 x 3	20
10	RSA4T10N	0.125	6-3/4	3-1/4	4	3/4 x 17 x 3	24
12	RSA4T12N	0.125	6-3/4	3-1/4	4	3/4 x 17 x 3	27
12	RSA5T12N	0.125	7-3/4	3-1/4	5	3/4 x 17 x 3	33
15	RSA4T15N	0.125	6-3/4	3-1/4	4	3/4 x 17 x 3	33
15	RSA5T15N	0.125	7-3/4	3-1/4	5	3/4 x 17 x 3	40
18	RSA4M18N	0.188	6-3/4	3-1/4	4	3/4 x 17 x 3	54
18	RSA5M18N	0.188	7-3/4	3-1/4	5	3/4 x 17 x 3	66
20	RSA5M20N	0.188	7-3/4	3-1/4	5	3/4 x 17 x 3	73

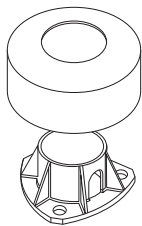
STANDARD BASE
(Round aluminum poles only.)

TYPE "A"
6", 7", 8" or 10"



STANDARD BASE
(Round aluminum poles only.)

TYPE "N"
(Standard with base cover.)
4", 5" or 6"

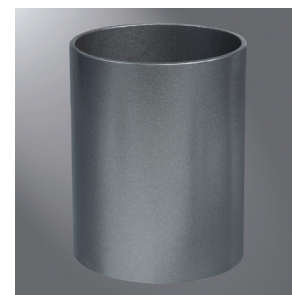
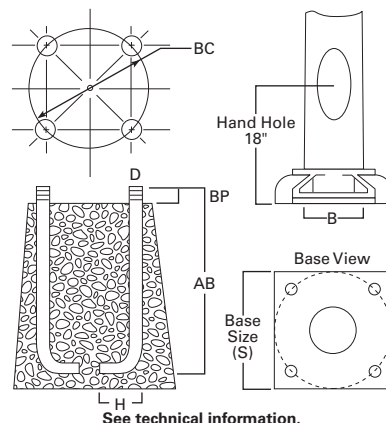


WARNING: The use of unauthorized accessories such as banners, signs, cameras or pennants for which the pole was not designed voids the pole warranty from Eaton's Cooper Lighting business and may result in pole failure causing serious injury or property damage. Upon request, Eaton's Cooper Lighting business will supply information regarding total loading capacity. The pole warranty from Eaton's Cooper Lighting business is void unless poles are used and installed as a complete pole/luminaire combination. This warranty specifically excludes failure as the result of a third party act or omission, misuse, unanticipated uses, fatigue failure or similar phenomena resulting from induced vibration, harmonic oscillation or resonance associated with movement of air currents around the product.

Specifications and dimensions subject to change without notice. Consult your Cooper Lighting representative or visit www.cooperlighting.com for available options, accessories and ordering information.

FEATURES

- Tapered aluminum shaft with polished finish
- Anchor bolt per ASTM A576 with (1) nut, (1) flat washer
- Cast aluminum alloy base with aluminum bolt covers
- Three-bolt and four-bolt anchorage configurations
- 10'-45' mounting heights
- Drilled or tenon (specify)



**RTA ROUND
TAPERED
ALUMINUM**

See technical information.

ORDERING INFORMATION

SAMPLE NUMBER: RTA5T20NAG1V

Product Family	Shaft Size (Inches) ¹	Wall Thickness (Inches)	Mounting Height (Feet)	Base Type	Finish
RTA=Round Tapered Aluminum	4=4" 5=5" 6=6" 7=7" 8=8" 0=10"	T=0.125" L=0.156" M=0.188" X=0.250"	10=10' 12=12' 15=15' 18=18' 20=20'	A=Aluminum (4-Bolt) ² N=Aluminum (3-Bolt)	A=Satin Brushed Aluminum B=Clear Anodized C=Dark Bronze Anodized D=Black Anodized E=Medium Bronze Anodized F=Dark Bronze J=Summit White K=Carbon Bronze L=Dark Platinum P=Primer Powder Coat R=Hartford Green S=Silver T=Graphite Metallic V=Grey W=White X=Custom Color Y=Black
Mounting Type	Number and Location of Arms		Options (Add as Suffix)		
2=2-3/8" O.D. Tenon (4" Long) 3=3-1/2" O.D. Tenon (5" Long) 4=4" O.D. Tenon (6" Long) 5=3" O.D. Tenon (4" Long) 6=2-3/8" O.D. Tenon (6" Long) 7=4" O.D. Tenon (10" Long)	A=Type A Drilling C=Type C Drilling E=Type E Drilling F=Type F Drilling G=Type G Drilling	J=Type J Drilling K=Type K Drilling M=Type M Drilling R=Type R Drilling Z=Type Z Drilling	1=Single 2=2 at 180° 3=Triple ³ 4=4 at 90°	5=2 at 90° 6=3 at 90° 7=2 at 120° X=None	A=1/2" Tapped Hub (Specify location desired) B=3/4" Tapped Hub (Specify location desired) C=Convenience Outlet ⁴ D=Base Cover for "A" Base E=GFCI Convenience Outlet ⁴ F=Vibration Pad G=Ground Lug H=Additional Hand Hole ⁵ L=Drilled for Bumper Glitter V=Vibration Dampener

NOTES: 1. All shaft sizes nominal. 2. Base cover not included (order as option). 3. Square poles are 3 at 90°, round poles are 3 at 120°. 4. Outlet is located 4" above base and on same side of pole as hand hole, unless specified otherwise. Receptacle not included, provision only. 5. Additional hand hole is located 12" below pole top and 90° from standard hand hole location, unless otherwise specified.

TECHNICAL INFORMATION

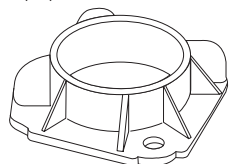
Mounting Height (Feet)	Catalog Number	Wall Thickness (Inches)	Base Square (Inches)	Bolt Circle Diameter (Inches)	Bolt Projection (Inches)	Shaft Diameter at Base (Inches)	Shaft Diameter at Top (Inches)	Anchor Bolt Diameter x Length x Hook	Net Weight (Pounds)
MH			S	BC	BP	B		D x AB x H	
10	RTA4T10N	0.125	9-1/4	6-3/4	3-1/4	4	3	3/4 x 17 x 3	22
12	RTA4T12N	0.125	9-1/4	6-3/4	3-1/4	4	3	3/4 x 17 x 3	25
15	RTA4T15N	0.125	9-1/4	6-3/4	3-1/4	4	3	3/4 x 17 x 3	30
15	RTA5T15N	0.125	10-1/2	7-3/4	3-1/4	5	3	3/4 x 17 x 3	33
18	RTA5T18N	0.125	10-1/2	7-3/4	3-1/4	5	3	3/4 x 17 x 3	39
18	RTA6L18A	0.156	10-5/16	9-3/8	3-1/2	6	4	3/4 x 17 x 3	57
20	RTA5T20N	0.125	10-1/2	7-3/4	3-1/4	5	3	3/4 x 17 x 3	43
20	RTA6L20A	0.156	10-5/16	9-3/8	3-1/2	6	4	3/4 x 17 x 3	64
25	RTA6L25A	0.156	10-5/16	9-3/8	3-1/2	6	4	3/4 x 17 x 3	81
25	RTA8L25A	0.156	12-1/16	11-1/2	4-1/8	8	4-1/2	1 x 36 x 4	106
30	RTA7L30A	0.156	11-1/4	10-1/2	4-1/8	7	4	1 x 36 x 4	108
30	RTA8L30A	0.156	12-1/16	11-1/2	4-1/8	8	4-1/2	1 x 36 x 4	117
30	RTA0L30A	0.156	13-3/16	14-1/2	4-3/4	10	6	1 x 36 x 4	152
35	RTA8L35A	0.156	12-1/16	11-1/2	4-1/8	8	4-1/2	1 x 36 x 4	140
35	RTA0L35A	0.156	13-3/16	14-1/2	4-3/4	10	6	1 x 36 x 4	180
40	RTA8M40A	0.188	12-1/16	11-1/2	4-1/8	8	4-1/2	1 x 36 x 4	210
40	RTA0L40A	0.156	13-3/16	14-1/2	4-3/4	10	6	1 x 36 x 4	209
45	RTA0L45A	0.156	13-3/16	14-1/2	4-3/4	10	6	1 x 36 x 4	247
45	RTA0X45A	0.250	14	14-1/2	5-1/4	10	6	1-1/4 x 42 x 6	350

STANDARD BASE

(Round aluminum poles only.)

TYPE "A"

6", 7", 8" or 10"

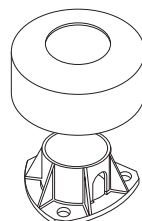
**STANDARD BASE**

(Round aluminum poles only.)

TYPE "N"

(Standard with base cover.)

4", 5" or 6"



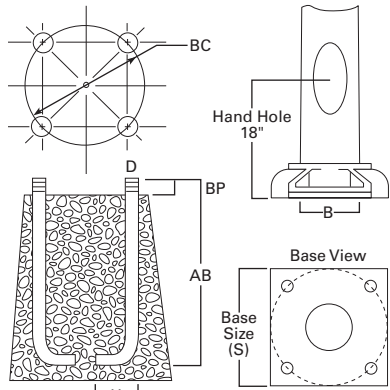
WARNING: The use of unauthorized accessories such as banners, signs, cameras or pennants for which the pole was not designed voids the pole warranty from Eaton's Cooper Lighting business and may result in pole failure causing serious injury or property damage. Upon request, Eaton's Cooper Lighting business will supply information regarding total loading capacity. The pole warranty from Eaton's Cooper Lighting business is void unless poles are used and installed as a complete pole/luminaire combination. This warranty specifically excludes failure as the result of a third party act or omission, misuse, unanticipated uses, fatigue failure or similar phenomena resulting from induced vibration, harmonic oscillation or resonance associated with movement of air currents around the product.

Specifications and dimensions subject to change without notice. Consult your Cooper Lighting representative or visit www.cooperlighting.com for available options, accessories and ordering information.



RTA ROUND
TAPERED
ALUMINUM WITH
ELLIPTICAL ARMS

- FEATURES**
- Cast aluminum alloy base with aluminum bolt covers
 - Flush, internally reinforced hand hole assembly
 - 10'-45' mounting heights
 - Drilled or tenon (specify)



See technical information.

ORDERING INFORMATION

SAMPLE NUMBER: RTA6L20AAS24V

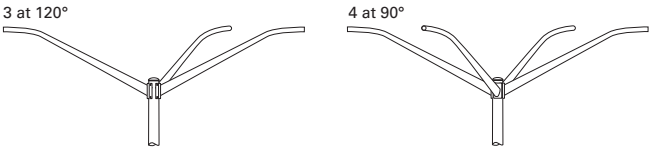
Product Family	Shaft Size (Inches) ¹	Wall Thickness (Inches)	Mounting Height (Feet)		Base Type	Finish	
RTA=Round Tapered Aluminum (With Round Elliptical Arms)	6=6"	T=0.125"	10=10'	25=25'	A=Aluminum (4-Bolt) ²	A=Satin Brushed Aluminum	P=Primer Powder Coat
	7=7"	L=0.156"	12=12'	30=30'		B=Clear Anodized	R=Hartford Green
	8=8"	M=0.188"	15=15'	35=35'		C=Dark Bronze Anodized	S=Silver
	0=10"	X=0.250"	18=18'	40=40'		D=Black Anodized	T=Graphite Metallic
			20=20'	45=45'		E=Medium Bronze Anodized	V=Grey
						F=Dark Bronze	W=White
						J=Summit White	X=Custom Color
						K=Carbon Bronze	Y=Black
						L=Dark Platinum	
Mounting Type	Number and Location of Arms		Arm Lengths (Feet)		Options (Add as Suffix)		
S=Standard Upsweep Arm	1=Single	4=4' 6=6' 8=8"			A=1/2" Tapped Hub (Specify location desired)	F=Vibration Pad	
	2=2 at 180°				B=3/4" Tapped Hub (Specify location desired)	G=Ground Lug	
	3=Triple ³				C=Convenience Outlet ⁴	H=Additional Hand Hole ⁵	
	4=4 at 90°				D=Base Cover for "A" Base	V=Vibration Dampener	
					E=GFCI Convenience Outlet ⁴		

NOTES: 1. All shaft sizes nominal. 2. Base cover not included (order as option). 3. Square poles are 3 at 90°, round poles are 3 at 120°. 4. Outlet is located 4' above base and on same side of pole as hand hole, unless specified otherwise. Receptacle not included, provision only. 5. Additional hand hole is located 12" below pole top and 90° from standard hand hole location, unless otherwise specified.

TECHNICAL INFORMATION

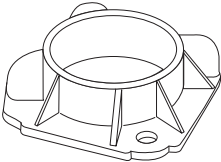
Mounting Height (Feet)	Catalog Number	Wall Thickness (Inches)	Base Square (Inches)	Bolt Circle Diameter (Inches)	Bolt Projection (Inches)	Shaft Diameter at Base (Inches)	Shaft Diameter at Top (Inches)	Anchor Bolt Diameter x Length x Hook	Net Weight (Pounds)	Arm Length (Feet)
MH			S	BC	BP	B		D x AB x H		
20	RTA6L20AAS14	0.156	10-5/16	9-3/8	3-1/2	6	4	3/4 x 17 x 3	94	4
20	RTA6L20AAS18	0.156	10-5/16	9-3/8	3-1/2	6	4	3/4 x 17 x 3	100	8
20	RTA6L20AAS24	0.156	10-5/16	9-3/8	3-1/2	6	4	3/4 x 17 x 3	97	4
20	RTA7L20AAS26	0.156	11-1/4	10-1/2	4-1/8	7	4	1 x 36 x 4	150	6
25	RTA6L25AAS14	0.156	10-5/16	9-3/8	3-1/2	6	4	3/4 x 17 x 3	117	4
25	RTA6L25AAS16	0.156	10-5/16	9-3/8	3-1/2	6	4	3/4 x 17 x 3	120	6
25	RTA7L25AAS16	0.156	11-1/4	10-1/2	4-1/8	7	4	1 x 36 x 4	152	6
25	RTA7L25AAS18	0.156	11-1/4	10-1/2	4-1/8	7	4	1 x 36 x 4	154	8
25	RTA8L25AAS24	0.156	12-1/16	11-1/2	4-1/8	8	4-1/2	1 x 36 x 4	171	4
25	RTA7L25AAS26	0.156	11-1/4	10-1/2	4-1/8	7	4	1 x 36 x 4	170	6
30	RTA7L30AAS14	0.156	11-1/4	10-1/2	4-1/8	7	4	1 x 36 x 4	169	4
30	RTA7L30AAS16	0.156	11-1/4	10-1/2	4-1/8	7	4	1 x 36 x 4	175	6
30	RTA8L30AAS16	0.156	12-1/16	11-1/2	4-1/8	8	4-1/2	1 x 36 x 4	182	6
30	RTA8L30AAS18	0.156	12-1/16	11-1/2	4-1/8	8	4-1/2	1 x 36 x 4	184	8
30	RTA8M30AAS24	0.188	12-1/16	11-1/2	4-1/8	8	4-1/2	1 x 36 x 4	215	4
30	RTA8L30AAS26	0.156	12-1/16	11-1/2	4-1/8	8	4-1/2	1 x 36 x 4	194	6
40	RTA0L40AAS16	0.156	13-3/16	14-1/2	4-3/4	10	6	1 x 36 x 4	282	6
40	RTA0X40AAS28	0.250	14	14-1/2	5-1/4	10	6	1-1/4 x 42 x 6	420	8

ARMS
(Configurations available on request.
Consult factory.)



STANDARD BASE
(Round aluminum poles only.)

TYPE "A"
6", 7", 8" or 10"

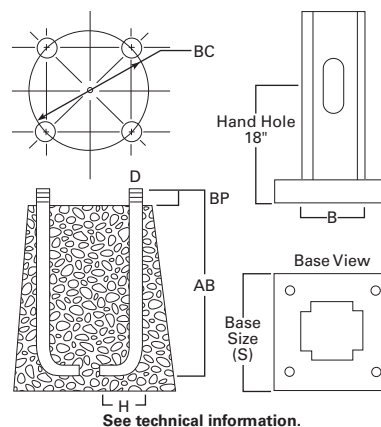


WARNING: The use of unauthorized accessories such as banners, signs, cameras or pennants for which the pole was not designed voids the pole warranty from Eaton's Cooper Lighting business and may result in pole failure causing serious injury or property damage. Upon request, Eaton's Cooper Lighting business will supply information regarding total loading capacity. The pole warranty from Eaton's Cooper Lighting business is void unless poles are used and installed as a complete pole/luminaire combination. This warranty specifically excludes failure as the result of a third party act or omission, misuse, unanticipated uses, fatigue failure or similar phenomena resulting from induced vibration, harmonic oscillation or resonance associated with movement of air currents around the product.

Specifications and dimensions subject to change without notice. Consult your Cooper Lighting representative or visit www.cooperlighting.com for available options, accessories and ordering information.

FEATURES

- 356-T6 cast aluminum alloy base with aluminum knock-in bolt covers
- 8'-30' mounting height
- Drilled or tenon (specify)

**CFA CRUCIFORM****ORDERING INFORMATION**

SAMPLE NUMBER: CFA4M12WBM1G

Product Family	Shaft Size (Inches) ¹	Wall Thickness (Inches)	Mounting Height (Feet)	Base Type	Finish
CFA=Cruciform	4=4" 6=6"	M=0.188" X=0.250"	08=8' 10=10' 12=12' 15=15' 18=18' 20=20' 25=25' 30=30'	W=Aluminum (Square and Cruciform Poles)	A=Satin Brushed Aluminum B=Clear Anodized C=Dark Bronze Anodized D=Black Anodized E=Medium Bronze Anodized F=Dark Bronze J=Summit White K=Carbon Bronze L=Dark Platinum P=Primer Powder Coat R=Hartford Green S=Silver T=Graphite Metallic V=Grey W=White X=Custom Color Y=Black
Mounting Type			Number and Location of Arms	Options (Add as Suffix)	
2=2-3/8" O.D. Tenon (4" Long) 3=3-1/2" O.D. Tenon (5" Long) 4=4" O.D. Tenon (6" Long) 5=3" O.D. Tenon (4" Long) 6=2-3/8" O.D. Tenon (6" Long) 7=4" O.D. Tenon (10" Long) A=Type A Drilling C=Type C Drilling			1=Single 2=2 at 180° 3=Triple ² 4=4 at 90° 5=2 at 90° X=None	A=1/2" Tapped Hub (Specify location desired) B=3/4" Tapped Hub (Specify location desired) C=Convenience Outlet ³ E=GFCI Convenience Outlet ³ F=Vibration Pad G=Ground Lug H=Additional Hand Hole ⁴ L=Drilled for Bumper Glitter V=Vibration Dampener	

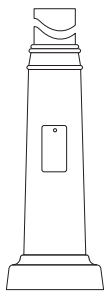
NOTES: 1. All shaft sizes nominal. 2. Square poles are 3 at 90°, round poles are 3 at 120°. 3. Outlet is located 4' above base and on same side of pole as hand hole, unless specified otherwise. Receptacle not included, provision only. 4. Additional hand hole is located 12" below pole top and 90° from standard hand hole location, unless otherwise specified.

TECHNICAL INFORMATION

Mounting Height (Feet)	Catalog Number	Wall Thickness (Inches)	Base Square (Inches)	Bolt Circle Diameter (Inches)	Bolt Projection (Inches)	Shaft Size (Inches)	Anchor Bolt Diameter x Length x Hook	Net Weight (Pounds)
MH			S	BC	BP	B	D x AB x H	
8	CFA4M08W	0.188	9-15/16	9	3-1/8	4	3/4 x 17 x 3	32
10	CFA4M10W	0.188	9-15/16	9	3-1/8	4	3/4 x 17 x 3	39
12	CFA4M12W	0.188	9-15/16	9	3-1/8	4	3/4 x 17 x 3	45
15	CFA4M15W	0.188	9-15/16	9	3-1/8	4	3/4 x 17 x 3	55
18	CFA4M18W	0.188	9-15/16	9	3-1/8	4	3/4 x 17 x 3	66
18	CFA6M18W	0.188	12-3/4	12-1/2	4	6	1 x 36 x 4	104
20	CFA4M20W	0.188	9-15/16	9	3-1/8	4	3/4 x 17 x 3	72
20	CFA6M20W	0.188	12-3/4	12-1/2	4	6	1 x 36 x 4	115
25	CFA6M25W	0.188	12-3/4	12-1/2	4	6	1 x 36 x 4	140
30	CFA6M30W	0.188	12-3/4	12-1/2	4	6	1 x 36 x 4	215

WARNING: The use of unauthorized accessories such as banners, signs, cameras or pennants for which the pole was not designed voids the pole warranty from Eaton's Cooper Lighting business and may result in pole failure causing serious injury or property damage. Upon request, Eaton's Cooper Lighting business will supply information regarding total loading capacity. The pole warranty from Eaton's Cooper Lighting business is void unless poles are used and installed as a complete pole/luminaire combination. This warranty specifically excludes failure as the result of a third party act or omission, misuse, unanticipated uses, fatigue failure or similar phenomena resulting from induced vibration, harmonic oscillation or resonance associated with movement of air currents around the product.

Specifications and dimensions subject to change without notice. Consult your Cooper Lighting representative or visit www.cooperlighting.com for available options, accessories and ordering information.



ASP ASPEN

ORDERING INFORMATION

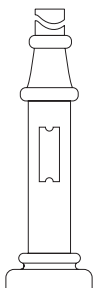
SAMPLE NUMBER: ASP0840RS5BK

Base Type	Mounting Height (Feet)	Shaft Size at Base (Inches)	Wall Thickness (Inches)	Shaft Type	Luminaire	Color	Options (Add as Suffix)
ASP=Aspen	08=8' 10=10' 12=12' 14=14' 16=16' 18=18'	5=5"	2=0.188" 3=0.250"	RS=Round Straight SF=Straight Fluted	4=4" O.D. Tenon ¹ 5=3" O.D. Tenon	AP=Grey BK=Black BZ=Bronze DP=Dark Platinum GM=Graphite Metallic GN=Hartford Green WH=White	WH=White C=Provision for Convenience Outlet E=GFI Convenience Outlet G=Ground Lug

NOTES: 1. Provides 4" tenon on 5" shafts or no tenon on 4" shafts allowing slip over of Epic Collection, Slide and Flite arm accessories. See individual product specifications for additional information.

BASE HEIGHT: 40"

BOLT CIRCLE: 15"



BWR BROADWAY

ORDERING INFORMATION

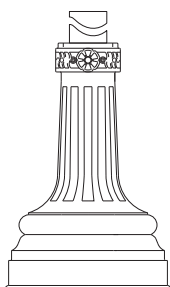
SAMPLE NUMBER: BWR0841RS5BK

Base Type	Mounting Height (Feet)	Shaft Size at Base (Inches)	Wall Thickness (Inches)	Shaft Type	Luminaire	Color	Options (Add as Suffix)
BWR=Broadway	08=8' 18=18' 10=10' 20=20' 12=12' 25=25' 14=14' 30=30' 16=16'	8=8" ¹	1=0.156 2=0.188" 3=0.250"	RT=Round Tapered	5=3" O.D. Tenon	AP=Grey BK=Black BZ=Bronze DP=Dark Platinum GM=Graphite Metallic GN=Hartford Green WH=White	C=Provision for Convenience Outlet E=GFI Convenience Outlet G=Ground Lug

NOTES: 1. Pole tapers to 4" at pole top.

BASE HEIGHT: 42"

BOLT CIRCLE: 12"



CHI CHARLESTON

ORDERING INFORMATION

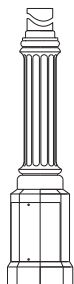
SAMPLE NUMBER: CHI0840RS5BK

Base Type	Mounting Height (Feet)	Shaft Size at Base (Inches) ¹	Wall Thickness (Inches)	Shaft Type	Luminaire	Color	Options (Add as Suffix)
CHI=Charleston	08=8' 14=14' 10=10' 16=16' 12=12' 18=18'	4=4" 5=5" 6=6"	0=0.125" 2=0.188"	RS=Round Straight SF=Straight Fluted	4=4" O.D. Tenon ² 5=3" O.D. Tenon	AP=Grey BK=Black BZ=Bronze DP=Dark Platinum GM=Graphite Metallic GN=Hartford Green WH=White	C=Provision for Convenience Outlet E=GFI Convenience Outlet G=Ground Lug

NOTES: 1. 4" shaft size available in 8', 10' and 12' mounting heights. 5" shaft size available in 8', 10', 12', 14' and 16' mounting heights. 6" shaft size available in 12', 14', 16' and 18' mounting heights. 2. Provides 4" tenon on 5" shafts or no tenon on 4" shafts allowing slip over of Epic Collection, Slide and Flite arm accessories. See individual product specifications for additional information.

BASE HEIGHT: 32"

BOLT CIRCLE: 10-3/4"



CPR CHESAPEAKE

ORDERING INFORMATION

SAMPLE NUMBER: CPR0840RS5BK

Base Type	Mounting Height (Feet)	Shaft Size at Base (Inches)	Wall Thickness (Inches)	Shaft Type	Luminaire	Color	Options (Add as Suffix)
CPR=Chesapeake	08=8' 10=10' 12=12' 14=14'	4=4" 5=5"	0=0.125" 2=0.188"	RS=Round Straight SF=Straight Fluted	4=4" O.D. Tenon ¹ 5=3" O.D. Tenon	AP=Grey BK=Black BZ=Bronze DP=Dark Platinum GM=Graphite Metallic GN=Hartford Green WH=White	C=Provision for Convenience Outlet E=GFI Convenience Outlet G=Ground Lug

NOTES: 1. Provides 4" tenon on 5" shafts or no tenon on 4" shafts allowing slip over of Epic Collection, Slide and Flite arm accessories. See individual product specifications for additional information.

BASE HEIGHT: 46-5/8"

BOLT CIRCLE: 13-1/4"

WARNING: The use of unauthorized accessories such as banners, signs, cameras or pennants for which the pole was not designed voids the pole warranty from Eaton's Cooper Lighting business and may result in pole failure causing serious injury or property damage. Upon request, Eaton's Cooper Lighting business will supply information regarding total loading capacity. The pole warranty from Eaton's Cooper Lighting business is void unless poles are used and installed as a complete pole/luminaire combination. This warranty specifically excludes failure as the result of a third party act or omission, misuse, unanticipated uses, fatigue failure or similar phenomena resulting from induced vibration, harmonic oscillation or resonance associated with movement of air currents around the product.

Specifications and dimensions subject to change without notice. Consult your Cooper Lighting representative or visit www.cooperlighting.com for available options, accessories and ordering information.

ORDERING INFORMATION

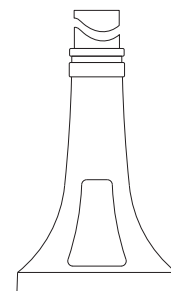
SAMPLE NUMBER: STL0842RS5BK

Base Type	Mounting Height (Feet)	Shaft Size at Base (Inches)	Wall Thickness (Inches)	Shaft Type	Luminaire	Color	Options (Add as Suffix)
STL=Seattle	08=8' 10=10' 12=12' 14=14' 16=16'	5=5"	2=0.188" 3=0.250"	RS=Round Straight SF=Straight Fluted	4=4" O.D. Tenon ¹ 5=3" O.D. Tenon	AP=Grey BK=Black BZ=Bronze DP=Dark Platinum GM=Graphite Metallic GN=Hartford Green WH=White	C=Provision for Convenience Outlet E=GFI Convenience Outlet G=Ground Lug

NOTES: 1. Provides 4" tenon on 5" shafts or no tenon on 4" shafts allowing slip over of Epic Collection, Slide and Flite arm accessories. See individual product specifications for additional information.

BASE HEIGHT: 23"

BOLT CIRCLE: 8"



STL SEATTLE

ORDERING INFORMATION

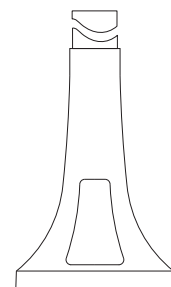
SAMPLE NUMBER: TAM1041RS5BK

Base Type	Mounting Height (Feet)	Shaft Size at Base (Inches)	Wall Thickness (Inches)	Shaft Type	Luminaire	Color	Options (Add as Suffix)
TAM=Tampa	10=10' 12=12' 14=14' 16=16' 18=18'	5=5"	1=0.156 2=0.188"	RS=Round Straight SF=Straight Fluted	4=4" O.D. Tenon ¹ 5=3" O.D. Tenon	AP=Grey BK=Black BZ=Bronze DP=Dark Platinum GM=Graphite Metallic GN=Hartford Green WH=White	C=Provision for Convenience Outlet E=GFI Convenience Outlet G=Ground Lug

NOTES: 1. Provides 4" tenon on 5" shafts or no tenon on 4" shafts allowing slip over of Epic Collection, Slide and Flite arm accessories. See individual product specifications for additional information.

BASE HEIGHT: 30"

BOLT CIRCLE: 8-1/2"



TAM TAMPA

ORDERING INFORMATION

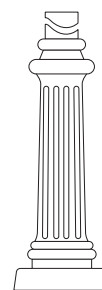
SAMPLE NUMBER: UBN0840RS5BK

Base Type	Mounting Height (Feet)	Shaft Size at Base (Inches)	Wall Thickness (Inches)	Shaft Type	Luminaire	Color	Options (Add as Suffix)
UBN=Utica	08=8' 10=10' 12=12'	4=4" 5=5"	0=0.125" 2=0.188"	RS=Round Straight SF=Straight Fluted	4=4" O.D. Tenon ¹ 5=3" O.D. Tenon	AP=Grey BK=Black BZ=Bronze DP=Dark Platinum GM=Graphite Metallic GN=Hartford Green WH=White	C=Provision for Convenience Outlet E=GFI Convenience Outlet G=Ground Lug

NOTES: 1. Provides 4" tenon on 5" shafts or no tenon on 4" shafts allowing slip over of Epic Collection, Slide and Flite arm accessories. See individual product specifications for additional information.

BASE HEIGHT: 31-3/8"

BOLT CIRCLE: 12-1/2"



UBN UTICA

ORDERING INFORMATION

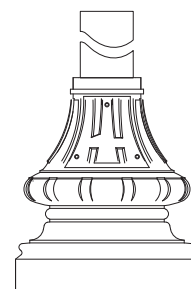
SAMPLE NUMBER: WA30840RS5BK

Base Type	Mounting Height (Feet)	Shaft Size at Base (Inches) ¹	Wall Thickness (Inches)	Shaft Type	Luminaire	Color	Options (Add as Suffix)
WA3=Washington 3	08=8' 10=10' 12=12' 14=14' 16=16' 18=18'	4=4" 5=5" 6=6"	0=0.125" 2=0.188"	RS=Round Straight SF=Straight Fluted	4=4" O.D. Tenon ² 5=3" O.D. Tenon	AP=Grey BK=Black BZ=Bronze DP=Dark Platinum GM=Graphite Metallic GN=Hartford Green WH=White	C=Provision for Convenience Outlet E=GFI Convenience Outlet G=Ground Lug

NOTES: 1. 4" shaft size available in 8', 10' and 12' mounting heights. 5" shaft size available in 8', 10', 12', 14' and 16' mounting heights. 6" shaft size available in 12', 14', 16' and 18' mounting heights. 2. Provides 4" tenon on 5" shafts or no tenon on 4" shafts allowing slip over of Epic Collection, Slide and Flite arm accessories. See individual product specifications for additional information.

BASE HEIGHT: 21"

BOLT CIRCLE: 10-3/4"

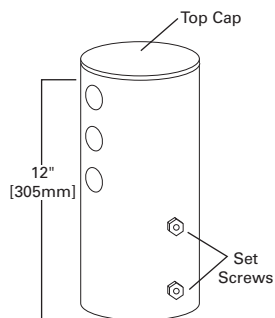
WA3
WASHINGTON

WARNING: The use of unauthorized accessories such as banners, signs, cameras or pennants for which the pole was not designed voids the pole warranty from Eaton's Cooper Lighting business and may result in pole failure causing serious injury or property damage. Upon request, Eaton's Cooper Lighting business will supply information regarding total loading capacity. The pole warranty from Eaton's Cooper Lighting business is void unless poles are used and installed as a complete pole/luminaire combination. This warranty specifically excludes failure as the result of a third party act or omission, misuse, unanticipated uses, fatigue failure or similar phenomena resulting from induced vibration, harmonic oscillation or resonance associated with movement of air currents around the product.

Specifications and dimensions subject to change without notice. Consult your Cooper Lighting representative or visit www.cooperlighting.com for available options, accessories and ordering information.

TENONS AND ADAPTERS

TYPE "M" DRILLING



DIRECT MOUNT TENON ADAPTER (2" or 3")

Tenon Size (Inches)	Fixture Configuration	Type "M" Drill Pattern	Type "E" Drill Pattern	Type "C" Drill Pattern	Type "A" Drill Pattern
2-3/8" O.D.	1 Fixture	MA1017	MA1101	VA1033	VA1019
2-3/8" O.D.	2 Fixtures at 180°	MA1018	MA1102	VA1034	VA1020
2-3/8" O.D.	3 Fixtures at 120°	MA1019	MA1103	VA1035	VA1021
2-3/8" O.D.	4 Fixtures at 90°	MA1045	MA1104	VA1036	VA1022
2-3/8" O.D.	2 Fixtures at 90°	MA1048	MA1105	VA1037	VA1023
2-3/8" O.D.	3 Fixtures at 90°	MA1049	MA1106	VA1038	VA1024
2-3/8" O.D.	2 Fixtures at 120°	MA1107	MA1116	VA1039	VA1025
3" O.D.	1 Fixture	MA1020			
3" O.D.	2 Fixtures at 180°	MA1034			
3" O.D.	4 Fixtures at 90°	MA1043			
3-1/2" O.D.	1 Fixture	MA1010	MA1108	VA1040	VA1026
3-1/2" O.D.	2 Fixtures at 180°	MA1011	MA1109	VA1041	VA1027
3-1/2" O.D.	3 Fixtures at 120°	MA1012	MA1110	VA1042	VA1028
3-1/2" O.D.	4 Fixtures at 90°	MA1013	MA1111	VA1043	VA1029
3-1/2" O.D.	2 Fixtures at 90°	MA1014	MA1112	VA1044	VA1030
3-1/2" O.D.	3 Fixtures at 90°	MA1016	MA1113	VA1045	VA1031
3-1/2" O.D.	2 Fixtures at 120°	MA1015	MA1114	VA1046	VA1032

NOTES: Fitters for other tenon sizes available. Consult your Eaton's Cooper Lighting business representative. Tenon adapter for thru-bolt mounted luminaires.

TENON REDUCER

Catalog Number ¹	Size (Inches)
TR30-2	3" O.D. to 2-3/8" O.D.
TR35-2	3-1/2" O.D. to 2-3/8" O.D.
TR35-3	3-1/2" O.D. to 3" O.D.
TR40-2	4" O.D. to 2-3/8" O.D.
TR40-3	4" O.D. to 3" O.D.
TR40-3.5	4" O.D. to 3-1/2" O.D.

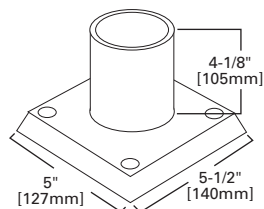
NOTES: 1 Standard adapter is bronze painted steel. Mounting hardware included.

REMOVABLE TENON FOR SQUARE STEEL POLE

Catalog Number ¹	Pole Size (Inches)	Tenon Size (Inches)
TASQ-4-2	4"	2-3/8" O.D.
TASQ-4-3	4"	3" O.D.
TASQ-5-2	5"	2-3/8" O.D.
TASQ-5-3	5"	3" O.D.
TASQ-6-2	6"	2-3/8" O.D.
TASQ-6-3	6"	3" O.D.
TASQ-4-3.5	4"	3-1/2" O.D.
TASQ-5-3.5	5"	3-1/2" O.D.
TASQ-6-3.5	6"	3-1/2" O.D.

NOTES: Includes thru bolts. Fits internally. Standard bronze painted.

SURFACE MOUNT BRACKETS



PARAPET BRACKET

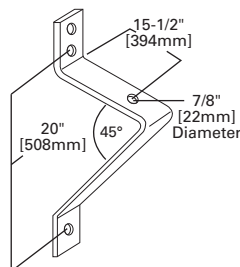
Catalog Number ¹	Tenon Size (Inches)	Fixture Configuration
FA63	3" O.D.	Single Parapet Mount

STEEL ANGLE BRACKET

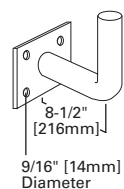
Catalog Number

SAB

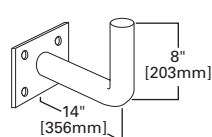
NOTES: Standard finish is hot dip galvanize. Mounting hardware not included.



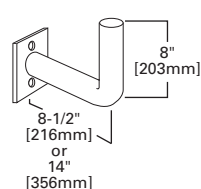
RAB



RABV



RABX / RABX14



RIGHT ANGLE BRACKETS

Catalog Number ¹	Tenon Size (Inches)	Bracket Length (Inches)
RAB	2-3/8" O.D.	8"
RAB-V	2-3/8" O.D.	14"
RABX ²	2-3/8" O.D.	8"
RABX14 ²	2-3/8" O.D.	14"

NOTES: 1 Standard finish is primed. Add suffix "G" for hot dip galvanize. Mounting hardware not included. Two Steel pole mounting.

WARNING: The use of unauthorized accessories such as banners, signs, cameras or pennants for which the pole was not designed voids the pole warranty from Eaton's Cooper Lighting business and may result in pole failure causing serious injury or property damage. Upon request, Eaton's Cooper Lighting business will supply information regarding total loading capacity. The pole warranty from Eaton's Cooper Lighting business is void unless poles are used and installed as a complete pole/luminaire combination. This warranty specifically excludes failure as the result of a third party act or omission, misuse, unanticipated uses, fatigue failure or similar phenomena resulting from induced vibration, harmonic oscillation or resonance associated with movement of air currents around the product.

Specifications and dimensions subject to change without notice. Consult your Cooper Lighting representative or visit www.cooperlighting.com for available options, accessories and ordering information.

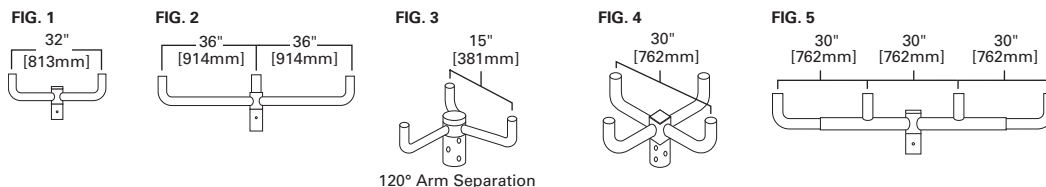
STEEL POLE TOP BRACKETS

Series 101 steel brackets are designed for floodlights with 2" slipfitters. Unthreaded pole fitter of brackets slips 3-1/2" O.D. pole top tenons. Top fitter is unthreaded and capped. All brackets are finished with bronze paint. Galvanized brackets are available. Consult your Eaton's Cooper Lighting business representative for ordering information.

SERIES 101 STEEL POLE MOUNTING BRACKETS

Catalog Number ¹	Number of Stubs ²	Figure	Bracket EPA (Square Feet)	Bracket Weight (Pounds)	Maximum Floodlight EPA Per Stub (Square Feet)	
					75 mph	100 mph
101-A13 ³	1	--	--	8	--	--
101-A23 ⁴	2	FIG. 1	.60	20	9.0	4.5
101-J33 ⁴	3	FIG. 2	.80	28	6.0	3.0
101-Y33 ⁴	3	FIG. 3	.59	32	6.0	3.0
101-W43	4	FIG. 4	.53	36	9.0	4.5
101-J43	4	FIG. 5	1.11	47	9.0	4.5

NOTES: 1 Brackets are designed for floodlights with 2" slipfitters. 2 Consult your Eaton's Cooper Lighting business representative regarding availability of brackets designed for more than four luminaires. Maximum floodlight weight allowed per stub is 100 Pounds. 3 May be used to connect 3-1/2" O.D. tenon to a 2-3/8" O.D. tenon. 4 To slip 2-3/8" O.D. pole top tenon, change last digit from "3" to "2".

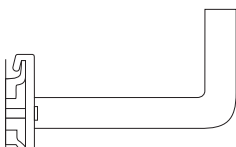


These steel pole brackets are used for mounting with 2" slipfitters on round or square steel poles. Poles must be specified with a simplex fitting and hardware which allows the bracket to be bolted direct to the fitting on the steel pole at the job site. Location of the bracket with respect to the base of the pole and the hand hole must be specified on the order for the pole. All brackets are finished with bronze paint.

SERIES 109 STEEL POLE MOUNTING BRACKETS

Catalog Number	Arm Length (Inches)	Maximum Fixture Weight (Pounds)	Bracket EPA (Square Feet)	Net. Weight (Pounds)
109W14	16"	75	.40	10
109W22	22"	65	.53	12

NOTES: Must be ordered with pole.



WARNING: The use of unauthorized accessories such as banners, signs, cameras or pennants for which the pole was not designed voids the pole warranty from Eaton's Cooper Lighting business and may result in pole failure causing serious injury or property damage. Upon request, Eaton's Cooper Lighting business will supply information regarding total loading capacity. The pole warranty from Eaton's Cooper Lighting business is void unless poles are used and installed as a complete pole/luminaire combination. This warranty specifically excludes failure as the result of a third party act or omission, misuse, unanticipated uses, fatigue failure or similar phenomena resulting from induced vibration, harmonic oscillation or resonance associated with movement of air currents around the product.

Specifications and dimensions subject to change without notice. Consult your Cooper Lighting representative or visit www.cooperlighting.com for available options, accessories and ordering information.

INTERNAL SQUARE STEEL SLIPFITTER BRACKETS (Square Steel Poles Only)

STEEL POLE TOP MOUNT BRACKETS (ISBD/ISBT)

ISBD/ISBT (ISBD—Direct Mount and ISBT—Tenon Mount) Internal square slipfitter brackets are designed for floodlights with tenons or area luminaires with arms. Brackets slip into a 4", 5" or 6" square pole top. Brackets provided with stainless steel hardware and readily adapts to poles from Eaton's Cooper Lighting business utilizing the M4 drill pattern without any modification. 4" brackets supplied with removable end caps for access to wireway.

FIG. 1
ISBD-4-2L, ISBD-5-2L or ISBD-6-2L
Two Arm Mountings

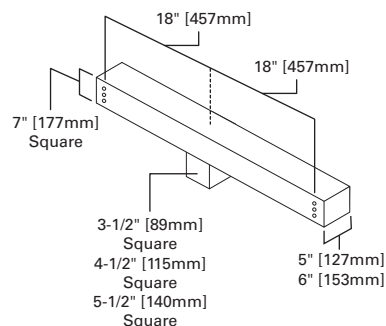


FIG. 2
ISBD-4-3L, ISBD-5-3L or ISBD-6-3L
Three Arm Mountings

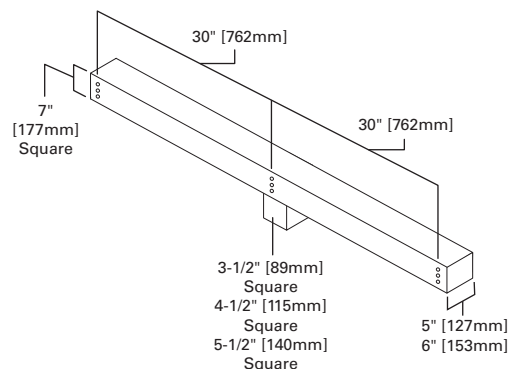


FIG. 3
ISBT-4-2L, ISBT-5-2L or ISBT-6-2L
Two Tenon Mountings

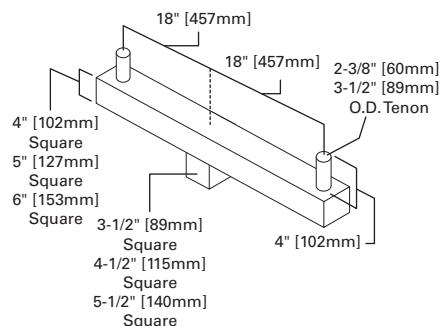


FIG. 4
ISBT-4-3L, ISBT-5-3L or ISBT-6-3L
Three Tenon Mountings

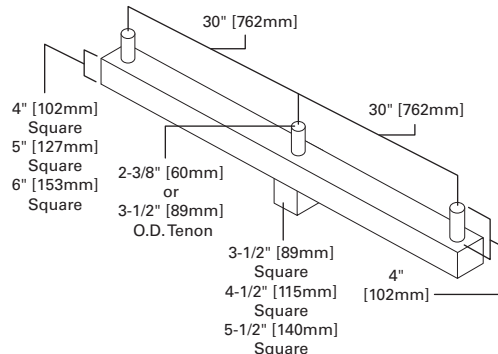


FIG. 5
ISBT-4-4Q, ISBT-5-4Q or ISBT-6-4Q
Four Tenon Mountings

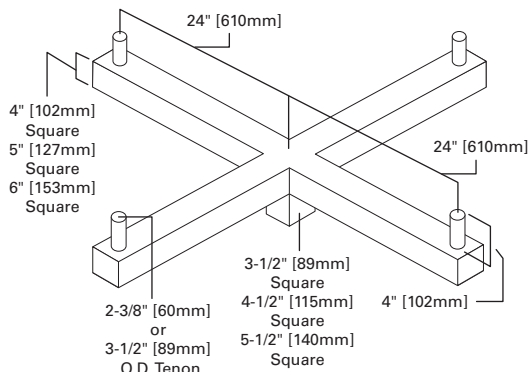
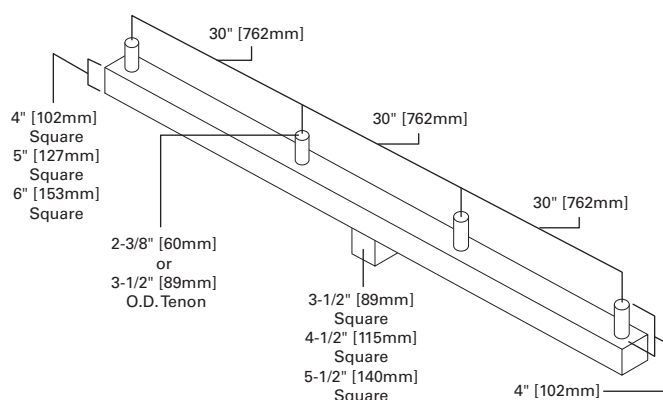


FIG. 6
ISBT-4-4L, ISBT-5-4L or ISBT-6-4L
Four Tenon Mountings



WARNING: The use of unauthorized accessories such as banners, signs, cameras or pennants for which the pole was not designed voids the pole warranty from Eaton's Cooper Lighting business and may result in pole failure causing serious injury or property damage. Upon request, Eaton's Cooper Lighting business will supply information regarding total loading capacity. The pole warranty from Eaton's Cooper Lighting business is void unless poles are used and installed as a complete pole/luminaire combination. This warranty specifically excludes failure as the result of a third party act or omission, misuse, unanticipated uses, fatigue failure or similar phenomena resulting from induced vibration, harmonic oscillation or resonance associated with movement of air currents around the product.

Specifications and dimensions subject to change without notice. Consult your Cooper Lighting representative or visit www.cooperlighting.com for available options, accessories and ordering information.

INTERNAL SQUARE STEEL SLIPFITTER BRACKETS (Square Steel Poles Only)

ORDERING INFORMATION

Product Family	Pole Dimension (Inches)	Mounting Configuration	Tenon Size / Drill Pattern (Inches)	Color
ISBD=Internal Square Slipfitter/Direct Mount ¹ ISBT=Internal Square Slipfitter/Tenon Mount	4=4" Square Pole 5=5" Square Pole 6=6" Square Pole	2L=2 In-Line 3L=3 In-Line 4L=4 In-Line 4Q=4 at 90°	2=2-3/8" O.D. Tenon 3=3-1/2" O.D. Tenon M=Type M Drilling	BK=Black AP=Grey BZ=Bronze WH=White DP=Dark Platinum GM=Graphite Metallic

NOTES: 1 Only available in 2L and 3L configurations.

TENON MOUNT

Catalog Number ¹	Figure	Pole Dimension (Inches)	Mounting Configuration	Tenon Size / Drill Pattern (Inches)	EPA	Net Weight (Pounds)
ISBT-4-2L-2-XX	3	4"	2 In-Line	2-3/8" O.D.	1.33	39
ISBT-5-2L-2-XX	3	5"	2 In-Line	2-3/8" O.D.	1.67	48
ISBT-6-2L-2-XX	3	6"	2 In-Line	2-3/8" O.D.	2.00	60
ISBT-4-3L-2-XX	4	4"	3 In-Line	2-3/8" O.D.	2.13	60
ISBT-5-3L-2-XX	4	5"	3 In-Line	2-3/8" O.D.	2.67	77
ISBT-6-3L-2-XX	4	6"	3 In-Line	2-3/8" O.D.	3.20	93
ISBT-4-4L-2-XX	6	4"	4 In-Line	2-3/8" O.D.	3.12	87
ISBT-5-4L-2-XX	6	5"	4 In-Line	2-3/8" O.D.	3.92	110
ISBT-6-4L-2-XX	6	6"	4 In-Line	2-3/8" O.D.	4.70	133
ISBT-4-4Q-2-XX	5	4"	4 at 90°	2-3/8" O.D.	1.73	98
ISBT-5-4Q-2-XX	5	5"	4 at 90°	2-3/8" O.D.	2.17	123
ISBT-6-4Q-2-XX	5	6"	4 at 90°	2-3/8" O.D.	2.60	149
ISBT-4-2L-3-XX	3	4"	2 In-Line	3-1/2" O.D.	1.33	39
ISBT-5-2L-3-XX	3	5"	2 In-Line	3-1/2" O.D.	1.67	50
ISBT-6-2L-3-XX	3	6"	2 In-Line	3-1/2" O.D.	2.00	60
ISBT-4-3L-3-XX	4	4"	3 In-Line	3-1/2" O.D.	2.13	60
ISBT-5-3L-3-XX	4	5"	3 In-Line	3-1/2" O.D.	2.67	77
ISBT-6-3L-3-XX	4	6"	3 In-Line	3-1/2" O.D.	3.20	93
ISBT-4-4L-3-XX	6	4"	4 In-Line	3-1/2" O.D.	3.13	87
ISBT-5-4L-3-XX	6	5"	4 In-Line	3-1/2" O.D.	3.92	110
ISBT-6-4L-3-XX	6	6"	4 In-Line	3-1/2" O.D.	4.70	133
ISBT-4-4Q-3-XX	5	4"	4 at 90°	3-1/2" O.D.	1.73	98
ISBT-5-4Q-3-XX	5	5"	4 at 90°	3-1/2" O.D.	2.17	123
ISBT-6-4Q-3-XX	5	6"	4 at 90°	3-1/2" O.D.	2.60	148

DIRECT MOUNT

Catalog Number ¹	Figure	Pole Dimension (Inches)	Mounting Configuration	Drill Pattern	EPA	Net Weight (Pounds)
ISBD-4-2L-M-XX	1	4"	2 In-Line	M	1.98	50
ISBD-5-2L-M-XX	1	5"	2 In-Line	M	1.98	52
ISBD-6-2L-M-XX	1	6"	2 In-Line	M	1.98	70
ISBD-4-3L-M-XX	2	4"	3 In-Line	M	3.72	87
ISBD-5-3L-M-XX	2	5"	3 In-Line	M	3.72	89
ISBD-6-3L-M-XX	2	6"	3 In-Line	M	3.72	95

WARNING: The use of unauthorized accessories such as banners, signs, cameras or pennants for which the pole was not designed voids the pole warranty from Eaton's Cooper Lighting business and may result in pole failure causing serious injury or property damage. Upon request, Eaton's Cooper Lighting business will supply information regarding total loading capacity. The pole warranty from Eaton's Cooper Lighting business is void unless poles are used and installed as a complete pole/luminaire combination. This warranty specifically excludes failure as the result of a third party act or omission, misuse, unanticipated uses, fatigue failure or similar phenomena resulting from induced vibration, harmonic oscillation or resonance associated with movement of air currents around the product.

Specifications and dimensions subject to change without notice. Consult your Cooper Lighting representative or visit www.cooperlighting.com for available options, accessories and ordering information.

STEEL SPOKE AND UPSWEEP BRACKETS

FIG. 1

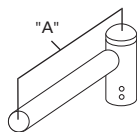


FIG. 2

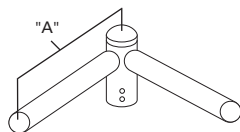


FIG. 3

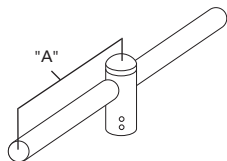


FIG. 4

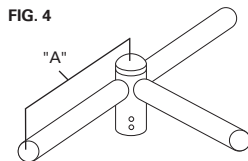


FIG. 5

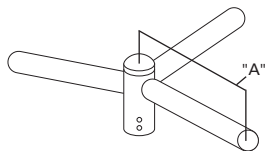
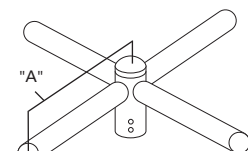


FIG. 6



SPOKE BRACKETS

Catalog Number	Figure	Number of Tenons	Arm Length "A" (Inches)	Maximum Weight (Pounds)
SB-100-08-2	1	1	8"	6
SB-100-12-2	1	1	12"	6
SB-100-15-2	1	1	15"	7
SB-100-24-2	1	1	24"	11
SB-100-30-2	1	1	30"	13
SB-100-36-2	1	1	36"	15
SB-290-08-2	2	2 at 90°	8"	9
SB-290-12-2	2	2 at 90°	12"	11
SB-290-15-2	2	2 at 90°	15"	13
SB-290-24-2	2	2 at 90°	24"	18
SB-290-30-2	2	2 at 90°	30"	22
SB-290-36-2	2	2 at 90°	36"	26
SB-218-08-2	3	2 at 180°	8"	9
SB-218-12-2	3	2 at 180°	12"	11
SB-218-15-2	3	2 at 180°	15"	13
SB-218-24-2	3	2 at 180°	24"	18
SB-218-30-2	3	2 at 180°	30"	22
SB-218-36-2	3	2 at 180°	36"	26
SB-390-08-2	4	3 at 90°	8"	11
SB-390-12-2	4	3 at 90°	12"	15
SB-390-15-2	4	3 at 90°	15"	17
SB-390-24-2	4	3 at 90°	24"	25
SB-390-30-2	4	3 at 90°	30"	30
SB-390-36-2	4	3 at 90°	36"	36
SB-312-08-2	5	3 at 120°	8"	11
SB-312-12-2	5	3 at 120°	12"	15
SB-312-15-2	5	3 at 120°	15"	17
SB-312-24-2	5	3 at 120°	24"	25
SB-312-30-2	5	3 at 120°	30"	30
SB-312-36-2	5	3 at 120°	36"	36
SB-490-08-2	6	4 at 90°	8"	13
SB-490-12-2	6	4 at 90°	12"	17
SB-490-15-2	6	4 at 90°	15"	21
SB-490-24-2	6	4 at 90°	24"	32
SB-490-30-2	6	4 at 90°	30"	39
SB-490-36-2	6	4 at 90°	36"	47

NOTES: Shipped with removable cap and mounting hardware assembled. Slipfitter fits 2 3/8" O.D. tenon. For hot dipped galvanized, add "G" to end of catalog number. Standard finish is bronze. Other finish colors available. Consult your Cooper Lighting Representative.

UPSWEEP BRACKETS

Catalog Number	Figure	Number of Tenons	Arm Length "A" (Inches)	Pole Tenon Size (O.D.)	Maximum Weight (Pounds)
UB1-4-2	7	1	48"	2-3/8"	21
UB1-6-2	7	1	72"	2-3/8"	28
UB1-8-2	7	1	96"	2-3/8"	41
UB2-4-2	8	2 at 180°	48"	2-3/8"	38
UB2-6-2	8	2 at 180°	72"	2-3/8"	52
UB2-8-2	8	2 at 180°	96"	2-3/8"	69

NOTES: Shipped with removable cap and mounting hardware assembled. For hot dipped galvanized, add "G" to end of catalog number. Standard finish is bronze. Other finish colors available. Consult your Eaton's Cooper Lighting business representative.

FIG. 7

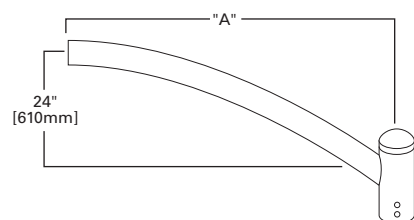
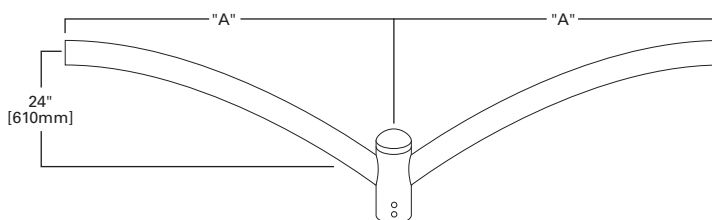


FIG. 8



WARNING: The use of unauthorized accessories such as banners, signs, cameras or pennants for which the pole was not designed voids the pole warranty from Eaton's Cooper Lighting business and may result in pole failure causing serious injury or property damage. Upon request, Eaton's Cooper Lighting business will supply information regarding total loading capacity. The pole warranty from Eaton's Cooper Lighting business is void unless poles are used and installed as a complete pole/luminaire combination. This warranty specifically excludes failure as the result of a third party act or omission, misuse, unanticipated uses, fatigue failure or similar phenomena resulting from induced vibration, harmonic oscillation or resonance associated with movement of air currents around the product.

Specifications and dimensions subject to change without notice. Consult your Cooper Lighting representative or visit www.cooperlighting.com for available options, accessories and ordering information.

ALUMINUM POLE TOP BRACKETS (Round Poles Only)

TENON BRACKETS

Catalog Number	Figure	Number of Stubs	For Pole Top (Inches)	Net Weight (Pounds)
T2A-4	2	2	4"	9
T2B-4	1	2	4"	8
T3A-4	3	3	4"	16
T3B-4	4	3	4"	14
T3C-4	5	3	4"	15
T4A-4	8	4	4"	21
T4C-4	6	4	4"	19
T4D-4	7	4	4"	19
T2A-4.5	2	2	4-1/2"	9
T2B-4.5	1	2	4-1/2"	8
T3A-4.5	3	3	4-1/2"	16
T3B-4.5	4	3	4-1/2"	14
T3C-4.5	5	3	4-1/2"	15
T4A-4.5	8	4	4-1/2"	21
T4C-4.5	6	4	4-1/2"	19
T4D-4.5	7	4	4-1/2"	19
T2A-6	2	2	6"	12
T2B-6	1	2	6"	11
T3A-6	3	3	6"	19
T3B-6	4	3	6"	17
T3C-6	5	3	6"	18
T4A-6	8	4	6"	24
T4C-6	6	4	6"	22
T4D-6	7	4	6"	22

NOTES: Standard finish is Brushed Aluminum. Other finish colors available. Consult your Eaton's Cooper Lighting business representative.

FIG. 1

T2B (Tenons in-line with uprights)

Capacity Per Tenon:

EPA 5.3; Maximum Weight Load Per Tenon 100 Pounds

Bracket EPA: 0.78

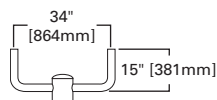


FIG. 2

T2A (Two Tenons at 180°, no uprights)

Capacity Per Tenon:

EPA 6.0; Maximum Weight Load Per Tenon 100 Pounds

Bracket EPA: 0.65

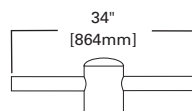


FIG. 3

T3A (Three Tenons in-line with uprights)

Capacity Per Tenon:

EPA 4.4; Maximum Weight Load Per Tenon 100 Pounds

Bracket EPA: 1.21

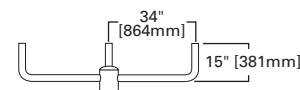


FIG. 4

T3B (Three Tenons at 120°, no uprights)

Capacity Per Tenon:

EPA 6.0; Maximum Weight Load Per Tenon 100 Pounds

Bracket EPA: 0.62

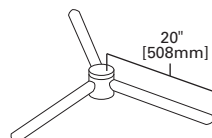


FIG. 5

T3C (Three Tenons at 120°, with uprights)

Capacity Per Tenon:

EPA 4.8; Maximum Weight Load Per Tenon 100 Pounds

Bracket EPA: 0.88

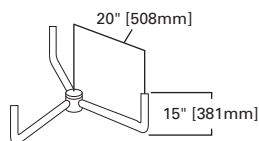


FIG. 6

T4C (Four Tenons at 90°, no uprights)

Capacity Per Tenon:

EPA 6.0; Maximum Weight Load Per Tenon 100 Pounds

Bracket EPA: 0.9

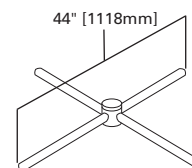


FIG. 7

T4D (Four Tenons at 90°, with uprights)

Capacity Per Tenon:

EPA 4.8; Maximum Weight Load Per Tenon 100 Pounds

Bracket EPA: 1.00

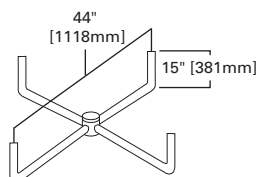


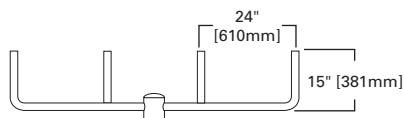
FIG. 8

T4A (Four Tenons in-line with uprights)

Capacity Per Tenon:

EPA 2.2; Maximum Weight Load Per Tenon 100 Pounds

Bracket EPA: 1.76



WARNING: The use of unauthorized accessories such as banners, signs, cameras or pennants for which the pole was not designed voids the pole warranty from Eaton's Cooper Lighting business and may result in pole failure causing serious injury or property damage. Upon request, Eaton's Cooper Lighting business will supply information regarding total loading capacity. The pole warranty from Eaton's Cooper Lighting business is void unless poles are used and installed as a complete pole/luminaire combination. This warranty specifically excludes failure as the result of a third party act or omission, misuse, unanticipated uses, fatigue failure or similar phenomena resulting from induced vibration, harmonic oscillation or resonance associated with movement of air currents around the product.

Specifications and dimensions subject to change without notice. Consult your Cooper Lighting representative or visit www.cooperlighting.com for available options, accessories and ordering information.

ALUMINUM POLE TOP BRACKETS (Square Poles Only)

TENON BRACKETS

Catalog Number ^{1,2}	Figure	Number of Stubs	Pole Diameter (Inches) ³	Net Weight (Pounds)
S1A	1	1	Specify	3.5
S2A	2	2	Specify	8
S4A	3	4	Specify	15
S2B	4	2	Specify	9
S3B	5	3	Specify	12
S4B	6	4	Specify	17
S4C	7	4	Specify	17
S2D	8	2	Specify	9

NOTES: 1 Standard bracket has 2-3/8" O.D. tenon. Other sizes available. Consult your Eaton's Cooper Lighting business representative. 2 Standard finish is Brushed Aluminum. Other finish colors available. Consult your Eaton's Cooper Lighting business representative. 3 Brackets flush mount on 4", 5", 6", 6-3/4" square poles. Must specify when ordering [Example: S1A-4]

FIG. 1

S1A (One Tenon at 180°, no uprights)

Capacity Per Tenon:

EPA 6.0; Maximum Weight Load Per Tenon 100 Pounds

Bracket EPA: 0.3

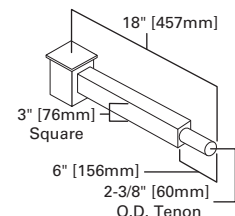


FIG. 2

S2A (Two Tenons at 180° in-line with no uprights)

Capacity Per Tenon:

EPA 6.0; Maximum Weight Load Per Tenon 100 Pounds

Bracket EPA: 0.6

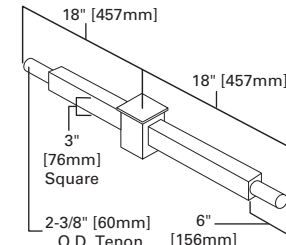


FIG. 3

S4A (Four Tenons at 90°, no uprights)

Capacity Per Tenon:

EPA 6.0; Maximum Weight Load Per Tenon 100 Pounds

Bracket EPA: 0.71

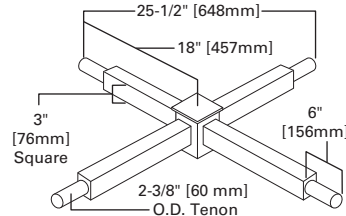


FIG. 4

S2B (Two Tenons at 180°, with uprights)

Capacity Per Tenon:

EPA 6.0; Maximum Weight Load Per Tenon 100 Pounds

Bracket EPA: .90

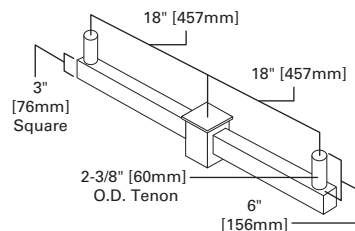


FIG. 5

S3B (Three Tenons at 180°, in-line with uprights)

Capacity Per Tenon:

EPA 6.0; Maximum Weight Load Per Tenon 100 Pounds

Bracket EPA: 1.50

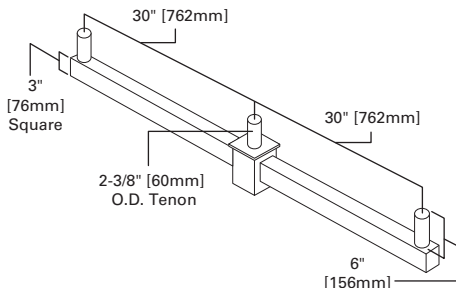


FIG. 6

S4B (Four Tenons at 180°, in-line with uprights)

Capacity Per Tenon:

EPA 4.0; Maximum Weight Load Per Tenon 75 Pounds

Bracket EPA: 2.25

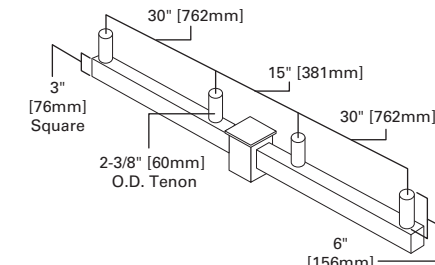


FIG. 7

S4C (Four Tenons at 90°, with uprights)

Capacity Per Tenon:

EPA 6.0; Maximum Weight Load Per Tenon 100 Pounds

Bracket EPA: 1.7

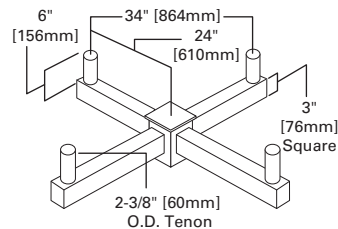


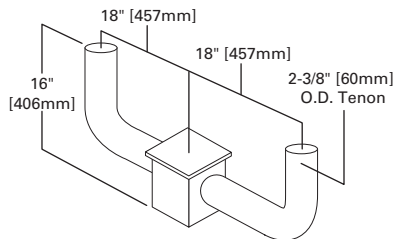
FIG. 8

S2D (Two Tenons in-line with uprights)

Capacity Per Tenon:

EPA 5.3; Maximum Weight Load Per Tenon 100 Pounds

Bracket EPA: .80



WARNING: The use of unauthorized accessories such as banners, signs, cameras or pennants for which the pole was not designed voids the pole warranty from Eaton's Cooper Lighting business and may result in pole failure causing serious injury or property damage. Upon request, Eaton's Cooper Lighting business will supply information regarding total loading capacity. The pole warranty from Eaton's Cooper Lighting business is void unless poles are used and installed as a complete pole/luminaire combination. This warranty specifically excludes failure as the result of a third party act or omission, misuse, unanticipated uses, fatigue failure or similar phenomena resulting from induced vibration, harmonic oscillation or resonance associated with movement of air currents around the product.

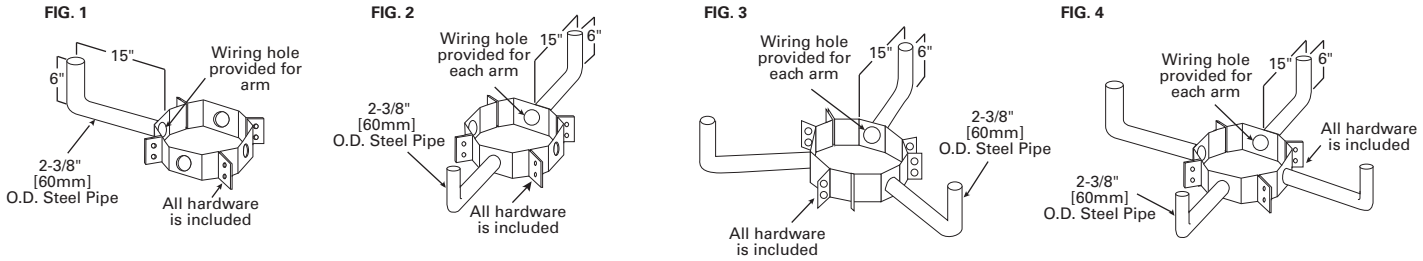
Specifications and dimensions subject to change without notice. Consult your Cooper Lighting representative or visit www.cooperlighting.com for available options, accessories and ordering information.

WOOD POLE TOP BRACKETS (Wood Poles Only)

WRAP AROUND ADAPTERS

Catalog Number	Pole Diameter (Inches)	Figure
W1P710	7-10"	1
W2P710	7-10"	2
W3P710	7-10"	3
W4P710	7-10"	4

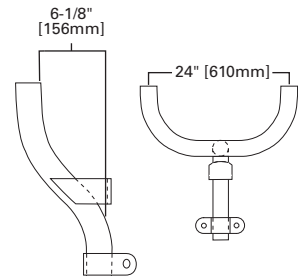
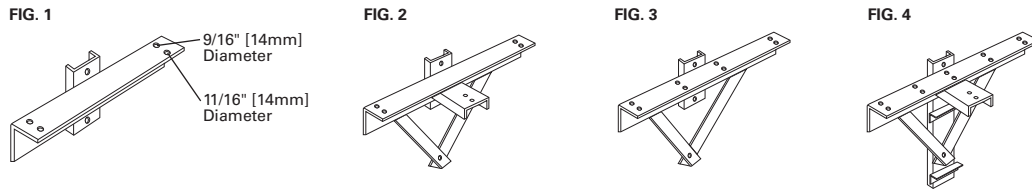
NOTES: If galvanized is desired, substitute "G" for "P". For pole sizes from 10" to 13" in diameter, substitute "1013" for "710".



CROSS ARM STEEL BRACKET FOR WOOD POLES (Not for use with steel or aluminum. See notes)

Catalog Number	Pole Diameter (Inches)	Fixture Configuration	EPA	Figure
S2C2WP	1"	2 In-Line	0.9	1
S3C3WPM	3"	3 In-Line / Offset	3.6	2
S4C4WP	4"	4 In-Line	4.5	3
S5C5WP	5"	5 In-Line	5.5	4

NOTES: If galvanized is desired, substitute "G" for "P". Mounting hardware not included. Fixture mounting holes are 30" on center. Modified versions are available for steel or aluminum pole applications. Consult your Eaton's Cooper Lighting business representative.



WOOD POLE FLOODLIGHT BRACKET

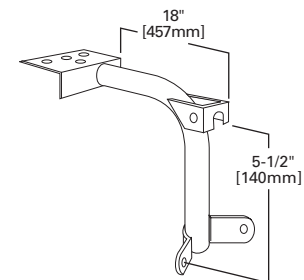
Catalog Number	Configuration	Tenon Size (Inches)	Net. Weight (Pounds)
06469	Single Mount	2-3/8" O.D.	13
06517	Twin Mount	2-3/8" O.D.	20

NOTES: Standard finish is primed. Add suffix "G" for hot-dip galvanized. Mounting hardware not included.

POLE MOUNTED FLOODLIGHT BRACKET FOR WOOD POLES

Catalog Number
OA1009

NOTES: Standard finish is hot-dip galvanized. Mounting hardware not included.



WARNING: The use of unauthorized accessories such as banners, signs, cameras or pennants for which the pole was not designed voids the pole warranty from Eaton's Cooper Lighting business and may result in pole failure causing serious injury or property damage. Upon request, Eaton's Cooper Lighting business will supply information regarding total loading capacity. The pole warranty from Eaton's Cooper Lighting business is void unless poles are used and installed as a complete pole/luminaire combination. This warranty specifically excludes failure as the result of a third party act or omission, misuse, unanticipated uses, fatigue failure or similar phenomena resulting from induced vibration, harmonic oscillation or resonance associated with movement of air currents around the product.

Specifications and dimensions subject to change without notice. Consult your Cooper Lighting representative or visit www.cooperlighting.com for available options, accessories and ordering information.

WOOD AND CONCRETE POLE TOP BRACKETS

FIG. 1

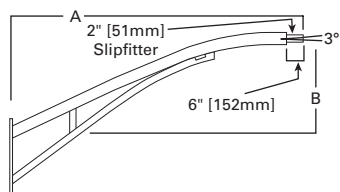


FIG. 2

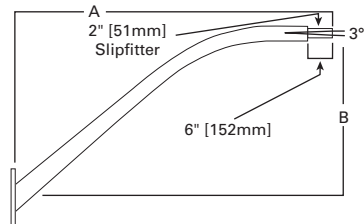


FIG. 3

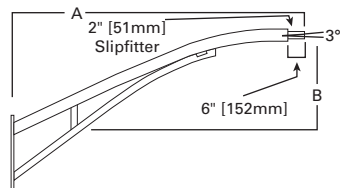


FIG. 4

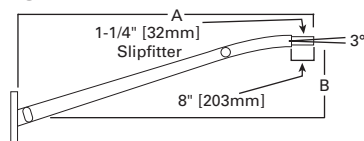


FIG. 5

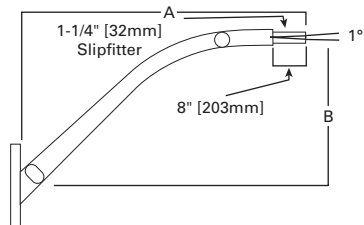
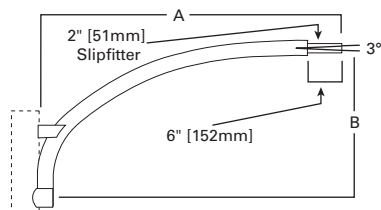


FIG. 6



WOOD POLES

Catalog Number	Figure	Arm Length "A" (Feet)	Arm Rise "B" (Feet)	Bracket Net. Weight (Pounds)	Maximum Luminaire Weight (Pounds)	Maximum Luminaire EPA (Square Feet)
WE424	2	4'	2'	10	60	3.0
WE636	2	6'	2'	12	60	3.0
WEH836	2	8'	2'	16	60	3.0
WEHT636	1	6'	2'	25	60	3.0
WEHT836	1	8'	2'	29	60	3.0
WEHT1036	1	10'	2'	33	60	3.0
WEHT1236	1	12'	2'	37	60	3.0
WEHT1536	1	15'	2'	52	60	3.0
WP218	6	2'	1'	7	60	3.0
WP424	6	4'	2'	10	60	3.0
WP624	6	6'	2'	14	60	3.0

CONCRETE ROUND / SQUARE POLES

Catalog Number	Figure	Arm Length "A" (Feet)	Arm Rise "B" (Feet)	Bracket Net. Weight (Pounds)	Maximum Luminaire Weight (Pounds)	Maximum Luminaire EPA (Square Feet)
CE424	2	4'	2'	12	60	3.0
CE636	2	6'	3'	14	60	3.0
CEH836	2	8'	3'	18	60	3.0
CEHT636	3	6'	3'	29	60	3.0
CEHT836	3	8'	3'	33	60	3.0
CEHT1036	3	10'	3'	37	60	3.0
CEHT1236	3	12'	3'	41	60	3.0
CEHT1536	3	15'	3'	56	60	3.0

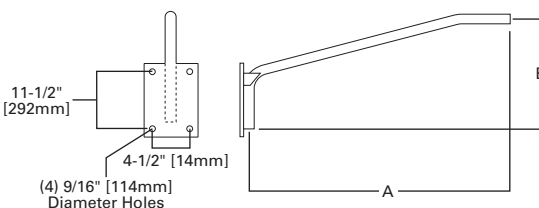
WOOD AND/OR CONCRETE POLES

Catalog Number	Figure	Arm Length "A" (Feet)	Arm Rise "B" (Feet)	Bracket Net. Weight (Pounds)	Maximum Luminaire Weight (Pounds)	Maximum Luminaire EPA (Square Feet)
WCE424	5	4'	2'	10	75	3.0
WCE636	4	6'	2'	12	75	3.0
WCE836	4	8'	2'	29	75	3.0
WCE1036	4	10'	2'	31	75	3.0
WCE1236	4	12'	2'	37	75	3.0

"W" SERIES GALVANIZED BRACKETS FOR CONCRETE POLES (FIG. 7)

Catalog Number	Pipe Size (Inches)	Arm Length "A" (Feet)	Arm Rise "B" (Feet)	Bracket Net. Weight (Pounds)	Maximum Luminaire Weight (Pounds)	Maximum Luminaire EPA (Square Feet)
W125C040	1-1/4"	4'	25'	16	70	3.1
W200C060	2"	6'	34'	29	90	4.0
W200C080	2"	8'	34'	48	45	2.4

FIG. 7

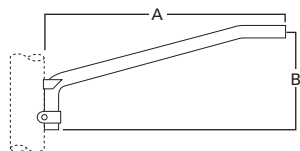


Notes: Mounting hardware not included. Available primer painted - consult your Eaton's Cooper Lighting business representative.

WARNING: The use of unauthorized accessories such as banners, signs, cameras or pennants for which the pole was not designed voids the pole warranty from Eaton's Cooper Lighting business and may result in pole failure causing serious injury or property damage. Upon request, Eaton's Cooper Lighting business will supply information regarding total loading capacity. The pole warranty from Eaton's Cooper Lighting business is void unless poles are used and installed as a complete pole/luminaire combination. This warranty specifically excludes failure as the result of a third party act or omission, misuse, unanticipated uses, fatigue failure or similar phenomena resulting from induced vibration, harmonic oscillation or resonance associated with movement of air currents around the product.

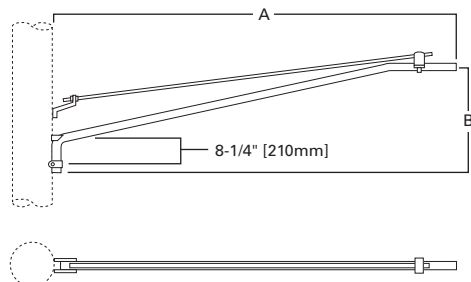
Specifications and dimensions subject to change without notice. Consult your Cooper Lighting representative or visit www.cooperlighting.com for available options, accessories and ordering information.

WOOD AND CONCRETE POLE TOP BRACKETS AND DECORATING ARMS

**"P" SERIES STEEL BRACKETS FOR WOOD POLES** (Hot dip galvanized)

Catalog Number	Pipe Size (Inches)	Arm Length "A" (Feet)	Arm Rise "B" (Feet)	Bracket Net. Weight (Pounds)	Maximum Luminaire Weight (Pounds)	Maximum Luminaire EPA (Square Feet)
P125S020	1-1/4"	2.0'	13'	7	90	5.0
P125S026	1-1/4"	2.5'	15'	8	80	2.4
P125S040	1-1/4"	4.0'	19'	1	80	2.4
P125S060	1-1/4"	6.0'	24'	15	80	2.4
P125S080	1-1/4"	8.0'	30'	19	35	1.2
P200S020	2"	2.0'	13'	10	90	5.0
P200S026	2"	2.5'	15'	12	80	2.4
P200S040	2"	4.0'	19'	13	80	2.4
P200S060	2"	6.0'	24'	23	80	2.4
P200S080	2"	8.0'	30'	28	70	1.8

NOTES: Mounting hardware not included.

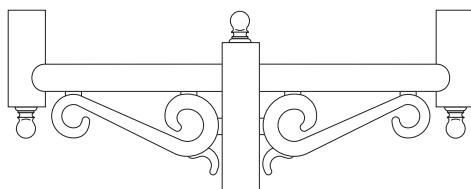
**"S" SERIES SINGLE GUY ROD GALVANIZED STEEL BRACKETS FOR WOOD POLES**

Catalog Number	Pipe Size (Inches)	Arm Length "A" (Feet)	Arm Rise "B" (Feet)	Bracket Net. Weight (Pounds)	Maximum Luminaire Weight (Pounds)	Maximum Luminaire EPA (Square Feet)
SINGLE GUY WIRE						
S125S060	1-1/4"	6'	24'	20	80	2.4
S125S060	1-1/4"	8'	30'	25	70	1.8
S125S100	1-1/4"	10'	35'	30	50	1.5
SINGLE GUY WIRE						
D200S060	2"	6'	24'	28	80	2.4
D200S080	2"	8'	30'	36	80	2.4
D200S100	2"	10'	35'	43	80	2.4
D200S120	2"	12'	40'	50	80	2.4

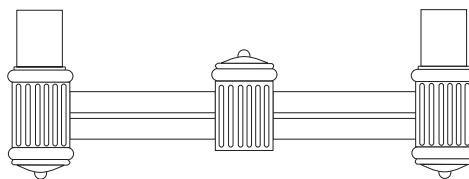
NOTES: Mounting hardware not included.

DECORATIVE POLE MOUNT ACCESSORIES

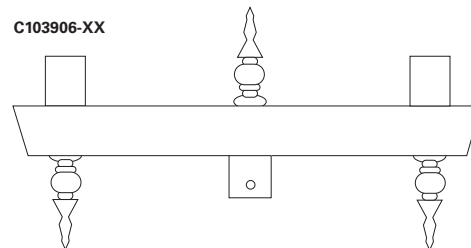
C108506-XX



G100808-XX

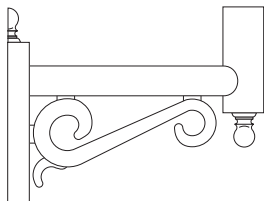


C103906-XX



DECORATIVE WALL MOUNT ACCESSORIES

CA108506-XX

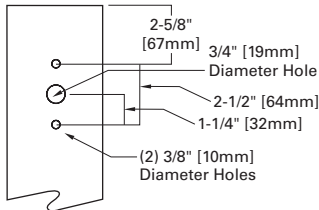


WARNING: The use of unauthorized accessories such as banners, signs, cameras or pennants for which the pole was not designed voids the pole warranty from Eaton's Cooper Lighting business and may result in pole failure causing serious injury or property damage. Upon request, Eaton's Cooper Lighting business will supply information regarding total loading capacity. The pole warranty from Eaton's Cooper Lighting business is void unless poles are used and installed as a complete pole/luminaire combination. This warranty specifically excludes failure as the result of a third party act or omission, misuse, unanticipated uses, fatigue failure or similar phenomena resulting from induced vibration, harmonic oscillation or resonance associated with movement of air currents around the product.

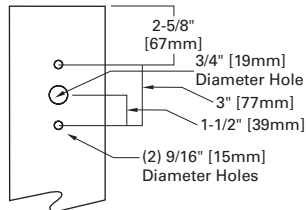
Specifications and dimensions subject to change without notice. Consult your Cooper Lighting representative or visit www.cooperlighting.com for available options, accessories and ordering information.

DRILL PATTERNS

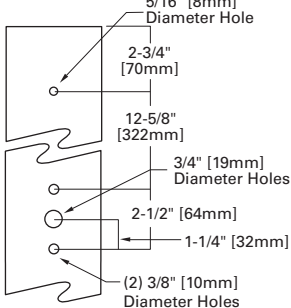
TYPE "A"



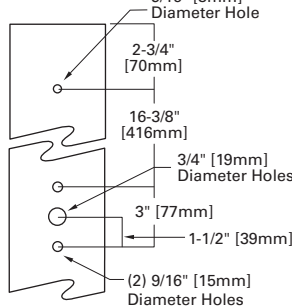
TYPE "C"



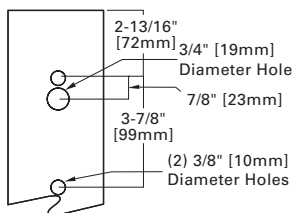
TYPE "J"



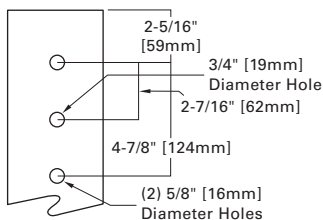
TYPE "K"



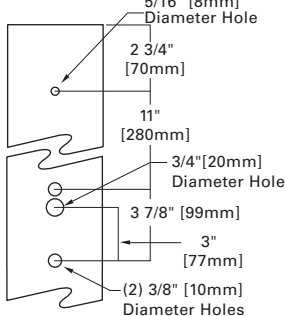
TYPE "E"



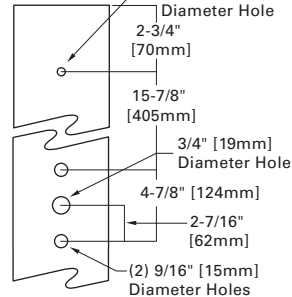
TYPE "M"



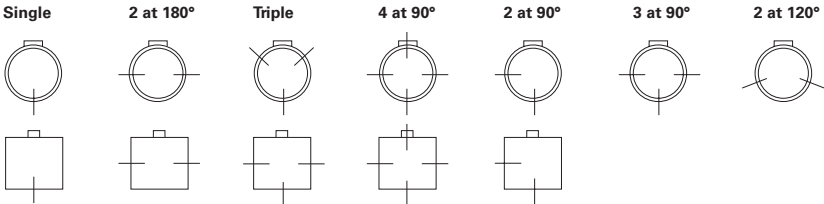
TYPE "F"



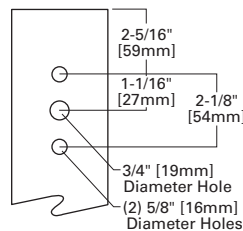
TYPE "G"



FIXTURE DRILLING OPTIONS (Note hand hole position relative to drill locations)



TYPE "R"



WARNING: The use of unauthorized accessories such as banners, signs, cameras or pennants for which the pole was not designed voids the pole warranty from Eaton's Cooper Lighting business and may result in pole failure causing serious injury or property damage. Upon request, Eaton's Cooper Lighting business will supply information regarding total loading capacity. The pole warranty from Eaton's Cooper Lighting business is void unless poles are used and installed as a complete pole/luminaire combination. This warranty specifically excludes failure as the result of a third party act or omission, misuse, unanticipated uses, fatigue failure or similar phenomena resulting from induced vibration, harmonic oscillation or resonance associated with movement of air currents around the product.

Specifications and dimensions subject to change without notice. Consult your Cooper Lighting representative or visit www.cooperlighting.com for available options, accessories and ordering information.

**FOR MORE INFORMATION CONTACT YOUR LOCAL EATON'S COOPER LIGHTING BUSINESS REPRESENTATIVE
OR VISIT WWW.COOPERINDUSTRIES.COM/CONTENT/PUBLIC/EN/LIGHTING.HTML**

Eaton's Cooper Lighting business offers a wide range of poles, luminaire mounting brackets and accessories. The information cataloged, including comprehensive Wind Loading Capacity Charts, found on our online spec sheets, provides for easy design of almost any pole-bracket-fixture combination.

HOW TO ORDER

1. Calculate the total effective projected area (EPA) of the desired luminaire(s) and mounting bracket(s) from the respective cataloged data.
2. Select the type of pole, pole material, and mounting height.
3. Determine the maximum wind velocity in your local area as shown on the National Wind Speed Chart.
4. Next, determine the specific pole you can use to mount your luminaire(s) and bracket(s) by utilizing the Wind Loading Capacity Charts found in our online spec sheets for the type of pole you desire. The total wind loading rating for the desired pole must be greater than the total EPA of the fixtures and brackets.
5. Double check to make sure pole tenon or bracket matches slipfitter of luminaire or floodlight.

POLE FINISHES

Custom colors available. Consult your Eaton's Cooper Lighting business representative.

Installation Instructions

Anchor Bolts

1. Only bolt and nut kits supplied by Eaton's Cooper Lighting business should be used.
2. Existing anchor bolts or bolt adapters supplied by other than Eaton's Cooper Lighting business should not be used. If they are, Eaton's Cooper Lighting business assumes no responsibility in case of bolt or adapter failure.
3. Anchor bolt and nuts from other sources should be used only on the advice of a Structural Engineer. Fasteners not suitable for this application can result in bolt and/or thread failure and consequent collapse of the pole.

CAUTION: Nuts from other manufacturers used with bolts from Eaton's Cooper Lighting business may result in thread failure caused by improper thread fit.

4. In addition to electrical conduit and other equipment necessary to the installation, the foundation bolts should be cast into concrete, in conformance with the template drawing supplied with the anchor bolts for each particular pole.

CAUTION:

- A. Check all templates for dimensional accuracy before using them to locate bolt position in the foundation.
- B. Be certain that anchor bolts are properly located to provide the desired directional orientation of the pole.
- C. Be certain that the anchor bolts are plumbed vertically, and they extend above the finished surface of the foundation to the extent called for on the bolt template drawing.

FOUNDATIONS

Since local soil and frost conditions vary widely a Civil Engineer familiar with these conditions should be consulted regarding dimensions and depths of foundations.

POLE ERECTION AND FIXTURE INSTALLATION

1. All steel poles from Eaton's Cooper Lighting business are to be installed using two nuts on each anchor bolt. The first nuts are to be run down on the thread to the top of the foundation and be checked using a hand level to ensure that the top surfaces of all these nuts are the same height. The pole should then be installed with its base plate holes over the bolts and the second nut screwed down to a moderate degree of tightness.

The pole then should be checked and adjustments made to ensure that the pole is plumb. When this is satisfactory, tighten the top nuts to the proper torque values as shown using torque wrench.

BOLT DIAMETER (Inches)	3/4	1	1-3/4	1-1/2
Recommended Foot Pounds of Torque When Nuts and Bolts are not Lubricated	105	250	500	870
Recommended Ft. Pounds of Torque When Nuts and Bolts are Lubricated	78	190	380	650

2. When the installation is complete and confirmed to be correct, the void that appears between the base plate and concrete foundation is to be filled using a non-shrinking mortar grout. Then shape and finish to a neat appearance.
3. With the exception of the instructions presented on this page, the procedures for fixture installation and pole erection are the responsibility of the installation contractor.

CAUTION:

All poles from Eaton's Cooper Lighting business have been designed to support only the luminaires and equipment originally intended. Miscellaneous items such as pennants, signs, cameras and decorations may cause pole failure due to overloading. Addition of these items voids warranty. Eaton's Cooper Lighting business will however, supply information on total loading EPA on request. Poles from Eaton's Cooper Lighting business are guaranteed only when used in a pole/luminaire or floodlight combination. Any other application of poles, including application without a luminaire or floodlight, voids warranty.

GROUNDING

Poles must be grounded in accordance with requirements in the National Electrical Code and applicable Local Electrical Codes.

VIBRATION

Many isolated wind conditions exist that can be devastating to poles and luminaires. Although rare, vibrations severe enough to cause damage can occur in structures of all types influenced by many interacting variables. Vibrations are generally unpredictable. Constant winds in the 10-30 mph range can severely damage certain poles by vibration and there is no single cure that will assure the prevention of all modes of vibration. Many factors may contribute to the development of a vibration problem. It is not, however, the result of defective material or workmanship and therefore not covered by the warranty. Vibration dampers that can help alleviate this condition can be supplied by Eaton's Cooper Lighting business either factory installed or for field installation. Eaton's Cooper Lighting business recommends that vibration dampers be considered when any of the following conditions exist:

1. Poles installed on a bridge structure, overpass, or parking ramp structure.
2. Pole having a fixture epa load of less than 0.5.
3. Camera support poles.
4. Locations that experience prevailing constant winds in the 10 to 30 mph range.
5. Any site that has history of vibration problems.
6. Areas specified as special wind zones (consult local authorities).
7. Locations near an airport, mountain foothills, great lakes, large open areas of flat ground or any other unique locations that may experience abnormal wind conditions. The user's maintenance program should

WARNING: The use of unauthorized accessories such as banners, signs, cameras or pennants for which the pole was not designed voids the pole warranty from Eaton's Cooper Lighting business and may result in pole failure causing serious injury or property damage. Upon request, Eaton's Cooper Lighting business will supply information regarding total loading capacity. The pole warranty from Eaton's Cooper Lighting business is void unless poles are used and installed as a complete pole/luminaire combination. This warranty specifically excludes failure as the result of a third party act or omission, misuse, unanticipated uses, fatigue failure or similar phenomena resulting from induced vibration, harmonic oscillation or resonance associated with movement of air currents around the product.

Specifications and dimensions subject to change without notice. Consult your Cooper Lighting representative or visit www.cooperlighting.com for available options, accessories and ordering information.

FOR MORE INFORMATION CONTACT YOUR LOCAL EATON'S COOPER LIGHTING BUSINESS REPRESENTATIVE.

THE FOLLOWING WARRANTY IS EXCLUSIVE AND IN LIEU OF ALL OTHER WARRANTIES, WHETHER EXPRESS, IMPLIED OR STATUTORY INCLUDING BUT NOT BY LIMITATION, ANY WARRANTY OF MERCHANTABILITY OR FITNESS FOR ANY PARTICULAR USE.

Eaton's Cooper Lighting business warrants to the customer for resale only that poles from Eaton's Cooper Lighting business are free from defects in materials and workmanship. The obligation of Eaton's Cooper Lighting business under this warranty is expressly limited to repair or replacement without charge, at the sole option of Eaton's Cooper Lighting business, of defective products within a period of one year from date of shipment of products and only after Eaton's Cooper Lighting business has issued a Return Materials Authorization to customer for the products. This warranty does not apply to products from Eaton's Cooper Lighting business which have been altered or repaired or which have been subjected to neglect, abuse, misuse or accident (including shipping damages). THIS WARRANTY DOES NOT APPLY TO PRODUCTS NOT MANUFACTURED BY EATON'S COOPER LIGHTING BUSINESS, WHICH HAVE BEEN INSTALLED AND/OR USED IN CONJUNCTION WITH PRODUCTS FROM EATON'S COOPER LIGHTING BUSINESS.

This warranty specifically excludes failure as the result of a third party act or omission, misuse, unanticipated uses, fatigue failure or similar phenomena resulting from induced vibration, harmonic oscillation or resonance associated with movement of air currents around the product.

This warranty also specifically excludes poles installed without the luminaires or with unapproved devices such as banners, pennants, cameras or signs for which the pole was not designed. Use of such unauthorized accessories may result in pole failure causing serious injury, death, or property damage.

MAINTAINING YOUR POLES FROM EATON'S COOPER LIGHTING BUSINESS

Your foundation design should assure that the accumulation of moisture cannot occur at the bottom of the pole structure. Proper drainage should be considered for naturally occurring condensation within the pole as well.

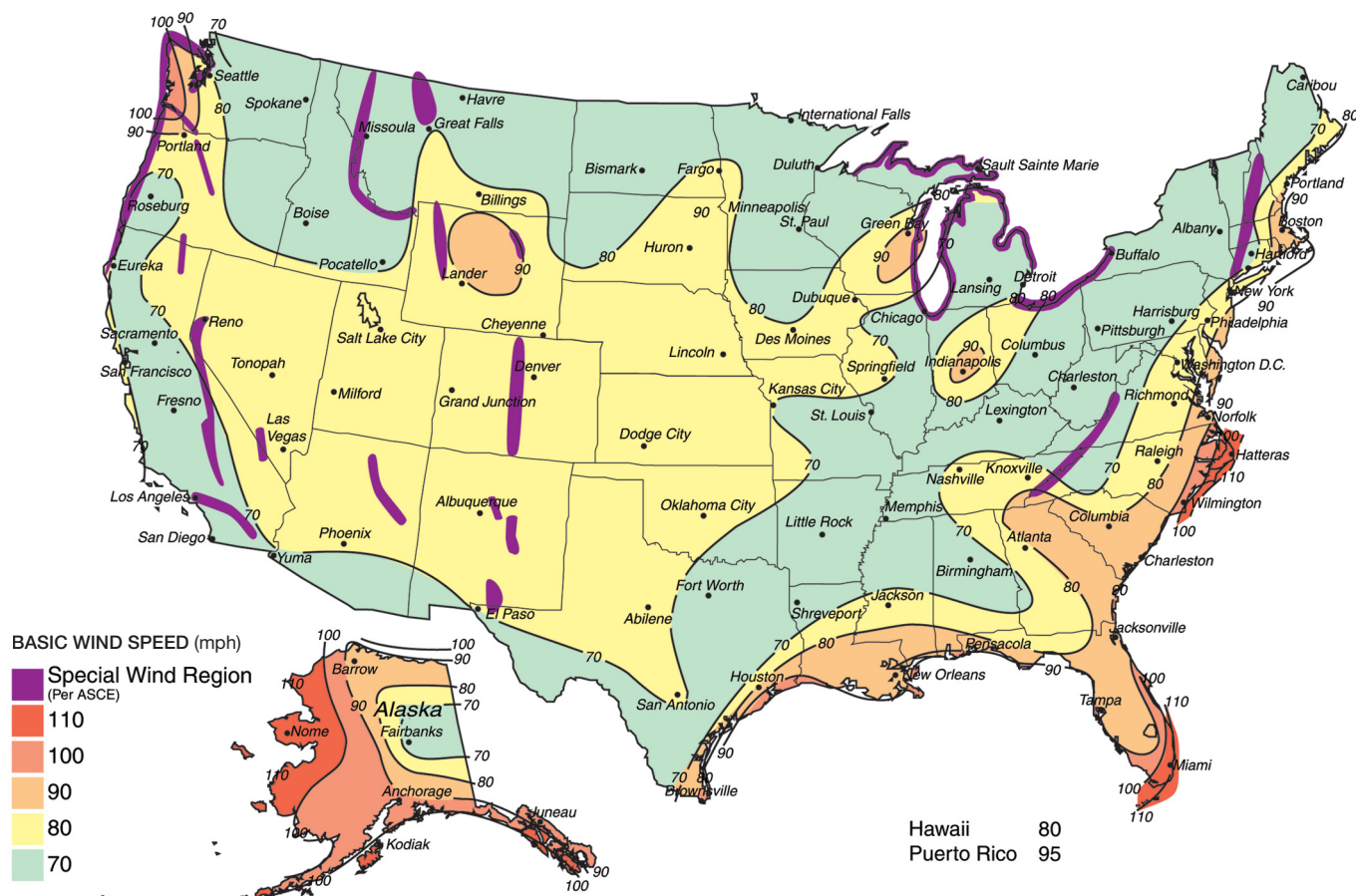
All steel and aluminum poles from Eaton's Cooper Lighting business are provided with a durable polyester powder coat finish to resist corrosion. Note that all finishes are subject to deterioration over time and poles subject to more corrosive environments that include salt or heavy rains or condensation may be subject to quicker deterioration.

An ongoing maintenance program should be established to include periodic inspections of the structure. Inspections should review the tightness of the associated anchorage as well as the structural integrity of the pole. Any noted corrosion should be corrected immediately to prevent deterioration of the pole's strength. Failure to maintain a regular inspection program could lead to pole failure that could result in property damage and serious injury.

NOTE: For shipments outside the United States and Canada contact our Customer First Center for applicable terms and conditions.


1994 AASHTO ISOTACH WIND MAP

The 50-year mean recurrence Isotach wind map has been included in this catalog in order to aid in the selection of a pole with regard to its geographic location. Although a less stringent 25-year mean recurrence map is sometimes used by other pole suppliers, it is our belief that the added measure of assurance offered in the use of this map deems it more desirable. Where unusual wind conditions exist [mountains, natural terrains acting as funnels, hurricane regions (shown as 110 mph regions)] it is advisable to contact your Eaton's Cooper Lighting business representative for further consultation.



WARNING: The use of unauthorized accessories such as banners, signs, cameras or pennants for which the pole was not designed voids the pole warranty from Eaton's Cooper Lighting business and may result in pole failure causing serious injury or property damage. Upon request, Eaton's Cooper Lighting business will supply information regarding total loading capacity. The pole warranty from Eaton's Cooper Lighting business is void unless poles are used and installed as a complete pole/luminaire combination. This warranty specifically excludes failure as the result of a third party act or omission, misuse, unanticipated uses, fatigue failure or similar phenomena resulting from induced vibration, harmonic oscillation or resonance associated with movement of air currents around the product.

Specifications and dimensions subject to change without notice. Consult your Cooper Lighting representative or visit www.cooperlighting.com for available options, accessories and ordering information.

A photograph of a modern landscape at night. In the foreground, a rectangular water feature is filled with smooth, light-colored stones. A series of seven dark, rectangular stone steps lead from the bottom edge of the frame into the water, receding towards the background. The water is illuminated from below, creating a warm, golden glow. The water feature is bordered by a dark, low wall. To the left and right of the water feature, there are lush green plants and trees, some of which are illuminated by warm, golden lights. In the background, a large, dark, rectangular stone structure is visible. The overall scene is a blend of natural elements and modern design, with a focus on lighting.

Pyramid Road Residence, Aspen, CO

Lighting Design: Robert Singer & Associates, Inc.,
Basalt, CO

Photography: Nick Tininenko Photography

Cooper Lighting SOURCE Awards Winner

Innovation you can rely on