

Catalog Number	
Notes	Type

FEATURES & SPECIFICATIONS

INTENDED USE

For applications that require medium to high light levels such as manufacturing, warehousing, storage, retail or task lighting. Ideal for mounting heights up to 25'.

ATTRIBUTES

Heavy-duty design for demanding industrial environments. Pressure-lock lampholders enclosed in snap-in turret housing. Available in 4' or 8' lengths. 6" lamp spacing of 2-lamp models, 3" lamp spacing on 3-lamp models. Solid top, 10% or 20% upright reflectors available, painted after fabrication.

CONSTRUCTION

Die-embossed reflector constructed of heavy gauge cold-rolled steel. White enamel reflector finish standard, porcelain finish optional.

FINISH

Five-stage iron-phosphate pretreatment ensures superior paint adhesion and rust resistance. Finish is high-gloss baked white enamel.

ELECTRICAL SYSTEM

Thermally protected, resetting, Class P, HPF, UL listed, CSA Certified ballast is standard. Energy saving and electronic ballasts are sound rated A.

Fixture is suitable for damp locations. AWM, TFN or THHN wire used throughout, rated for required temperatures.

INSTALLATION

For surface or suspended mounting, unit or row installation.

LISTING

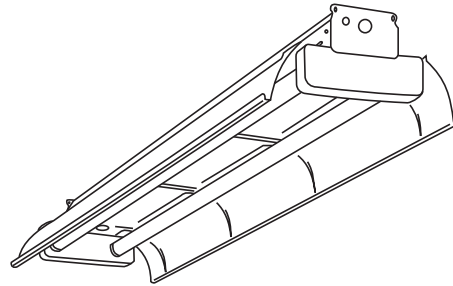
120V, 277V and MVOLT are UL Listed and CSA Certified (standard). 347V is CSA Certified (see Options). NOM Certified (see Options).

WARRANTY

Guaranteed for one year against mechanical defects in manufacture.

Heavy-Duty Turret Industrial

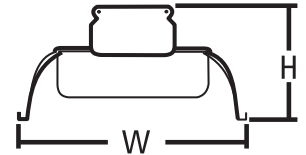
AF



Rapid Start
4' or 8' lengths
1, 2, 3 or 4 lamps

Specifications

Length: 49-13/16 (1265) or 99-5/8 (2530)
Width: 13-3/8 (340)
Height: 6-5/8 (168)



All dimensions are inches (millimeters).

Specifications subject to change without notice.

ORDERING INFORMATION

For shortest lead times, configure product using **standard options (shown in bold)**.

Example: AF 3 32 277 1/3 GEB10IS

Series	Lamps	Lamp type	Voltage	Options
--------	-------	-----------	---------	---------

AFST Solid reflector
AF10 10% upright apertured reflector
AF 20% upright apertured reflector

1
2
3
4
Not included.

32 32W T8 (48")

120
277
347
MVOLT²

Shipped installed in fixture

1/3 One 3-lamp ballast (32 watt electronic ballast only)
1/4 One 4-lamp ballast (32 watt electronic ballast only)

GEB T8 electronic ballast, ≤20% THD
GEB10IS T8 electronic ballast, ≤10% THD, instant start¹
GEB10RS T8 electronic ballasts, 10% THD, rapid start

EL Emergency battery pack (nominal 300 lumens), see Life Safety Section

GLR Internal fast-blow fusing (add X for external)
GMF Internal slow-blow fusing (add X for external)
PLF_ Plug-in wiring, Specify 1, 2 or 3 branch circuits & hot wires (A = black, B = red, C = blue, AB or AC)
TILW Tandem in-line wiring
PO White porcelain reflector finish
CSA CSA Certified (347V only)
NOM NOM Certified
BDP Ballast disconnect³

For tandem double-length unit, add prefix T.
Example: TAF10

Accessories

Order as separate catalog number.

ACEP Full-depth endplates (1 pair)
HRUN Hooker® T-bar hanger for 5" channel (flush to ceiling)
HRUN1 Hooker® T-bar hanger for 5" channel (1-1/2" from ceiling)
SQ_ Swivel stem hanger (specify length in 2" increments)
1B Ceiling spacer (1-1/2" to 2-1/2" from ceiling)
HC36 Chain hangers (1 pair, 36" long)
THUN Tong hanger for 5" channel
WGAFPV Wireguard, 4' white (order 2 for 8' fixtures)⁴
DLAF ME 4' 30° x 30° metal eggcrate louver⁴
DLAF A12 4' framed acrylic prismatic lens⁴

NOTES:

- Available only with 32 lamp type.
- Electronic ballast 120 through 277 volt only. Available with 32 watt T8 only. MVOLT must specify GEB10IS.
- Meets codes that require in fixture disconnect.
- Order 2 for 8' fixtures.

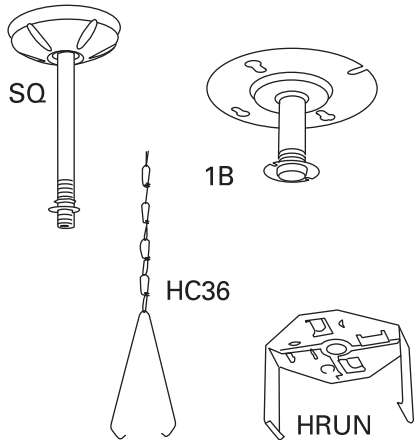
AF Rapid Start

MOUNTING DATA

For unit or row installation. Surface or stem mounting.¹

UNIT INSTALLATION — Minimum of two hangers required.

ROW INSTALLATION — One hanger per fixture plus one per row required.



DIMENSIONS

A = 1/4 x 1/2 (64 x 13) Oval Hole

C = 7/8 (22) Dia. K.O.

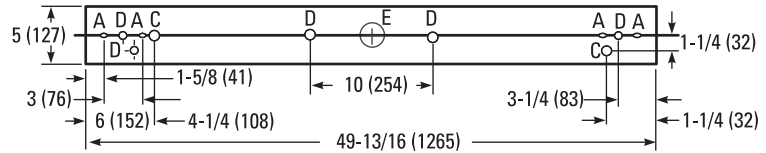
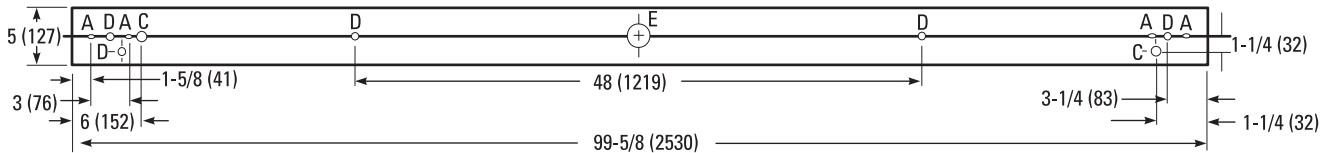
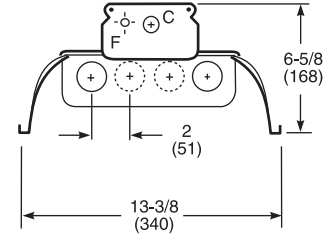
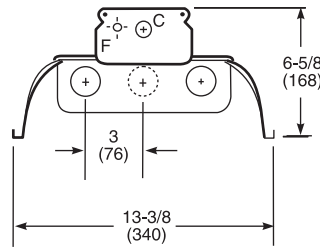
D = 11/16 (17) Dia. K.O.

E = 2 (51) Dia. K.O.

F = 7/16 (111) Dia. K.O.

All dimensions are inches (millimeters).

Specifications subject to change without notice.



Energy (Calculated in accordance with NEMA standard LE-5)

LER.FW	ANNUAL ENERGY COST*	LAMP DESCRIPTION	LAMP LUMENS	BALLAST FACTOR	WATTS
74	\$3.24	(2) F32T8	2800	.88	60

*Calculated in accordance with NEMA Standards LE-5.

PHOTOMETRICS

Calculated using the zonal cavity method in accordance with IESNA LM41 procedure. Floor reflectances are 20%. Lamp configurations shown are typical. All data based on 25°C. Full photometric data on these and other configurations available upon request.

AF 2 32

Report ITL 5711

S/MH 1.4

Coefficient of Utilization

Ceiling	80%			70%			50%		
	70%	50%	30%	70%	50%	30%	50%	30%	10%
1	94	90	86	90	86	83	79	76	74
2	86	79	73	82	75	70	69	65	61
3	78	69	62	74	66	60	61	56	52
4	72	61	54	68	59	52	54	48	44
5	65	54	46	62	52	44	48	41	37
10	43	31	24	41	30	23	28	22	18

Zonal Lumens Summary

Zone	Lumens	%Lamp	%Fixture
0-30	998	17.2	19.0
0-40	1677	28.9	31.9
0-60	3126	53.9	59.6
0-90	4074	70.2	77.6
90-180	1175	20.3	22.4
0-180	5249	90.5	100.0



An AcuityBrands Company

Lithonia Lighting

Industrial

One Lithonia Way, Conyers, GA 30012

Phone: 770-922-9000 Fax: 770-981-8141

www.lithonia.com