

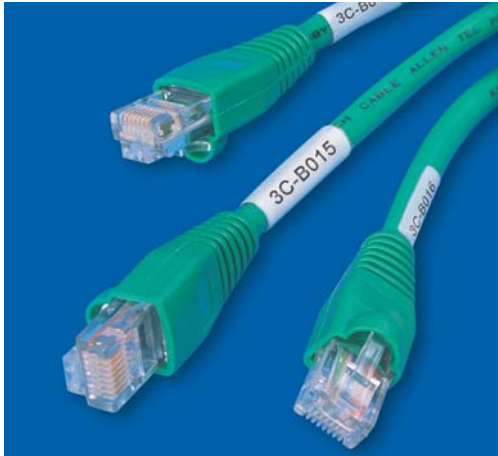


# Voice / Data Identification

THE LEADER IN COMMUNICATIONS LABELING ■ [WWW.BRADYID.COM/DATACOMM](http://WWW.BRADYID.COM/DATACOMM) 2004/2005

ANSI/TIA/EIA 606-A COMPLIANT SOLUTIONS

## Communications Cabling Labels



▶ 4 pair cables with *PTL-31-427*



▶ *PTLFP-01-425*



▶ *PTL-64-427*

Brady offers a wide range of sizes to fit voice, data and video cabling applications. Our proprietary adhesive never loses its grip, even on the most slick Plenum cabling.

Application	TLS 2200® Labels	IDXPERT™ Labels	LaserTab Labels	Benchtop Thermal Transfer Labels
<b>4 PAIR UTP, CAT 5, CAT 5E, CAT 6, SILVER SATIN</b>	PTL-31-427*	XSL-31-427	LAT-18-361 / <b>ELAT-18-361**</b>	THT-9-427
<b>4 PAIR STP, 25 PAIR COPPER</b>	PTL-21-427*	XSL-21-427	LAT-19-361 / <b>ELAT-19-361**</b>	THT-75-427
<b>50 PAIR COPPER</b>	PTL-33-427*	XSL-33-427	-	THT-10-427
<b>100 PAIR COPPER</b>	PTL-34-427*	XSL-34-427	-	THT-10-427
<b>FIBER STRAND</b>	PTLFT-01-425/ PTLFP-01-425	-	-	-
<b>FIBER/COAX</b>	PTL-64-427	-	-	-
<b>2 PAIR FIBER</b>	PTL-19-427*	XSL-19-427	LAT-17-361	THT-56-427
<b>4-12 PAIR FIBER</b>	PTL-21-427*	XSL-21-427	LAT-19-361 / <b>ELAT-19-361**</b>	THT-75-427
<b>RG-6 COAX, RG-59 COAX</b>	PTL-31-427*	XSL-31-427	LAT-18-361 / <b>ELAT-18-361**</b>	THT-9-427
<b>BACKBONE CABLE</b>	PTL-23-427	XSL-23-427	-	-
	PTL-66-427	-	-	-
<b>CABLE BUNDLES</b>	PTL-12-109	-	-	-

\* These labels are available in Blue (BL), Brown (BR), Gray (GY), Green (GN), Orange (OR), Purple (PL), Red (RD) and Yellow (YL). All PTL label sizes are also available in a Plenum rated version (PTL-XX-642) in white only.

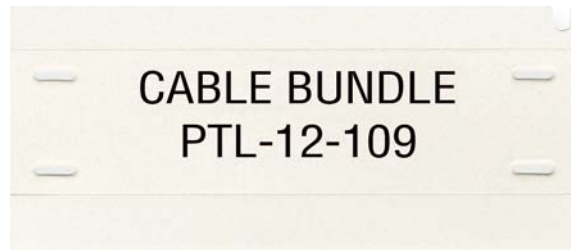
\*\* ELAT sheets are A4 size for European use.

Brady also offers cable labels for inkjet printers, including JET-30-117 for 4 pair copper. Other sizes for smaller and larger cables are available.

Cable sizes vary by manufacturer, so it is always recommended to try a particular size for your application.



▶ Cable labels are available in colors. *PTL-29-427-BL*



▶ Tags for identifying cable bundles. *PTL-12-109*



▶ Tags for small diameter cables. *PTLFT-01-425*



## Power and Ground Cable Labels

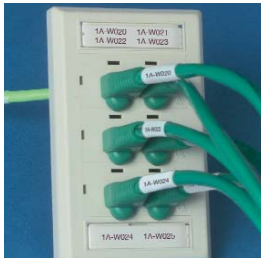
*Print Directly on the Tag!*



► PTL-110-145-GY

Application	TLS 2200® Labels	Size - Inch (mm)
<b>145C TAG</b>	PTL-111-145-GY	1.750 x 1.000 (44.45 x 25.40)
<b>145P TAG</b>	PTL-110-145-GY	1.206 x 0.758 (19.25 x 30.36)
<b>NON-ADHESIVE CABLE TAGS</b>	PTL-12-109	0.750 x 3.000 (19.05 x 76.20)
	PTL-36-109	1.750 x 1.125 (44.45 x 28.57)

## Workstation Labels



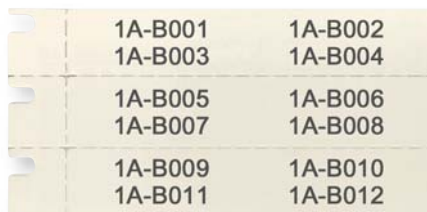
► Faceplate with PTL-40-412

Brady offers larger location labels for the entire faceplate and smaller labels to identify each individual port. Our proprietary adhesives stay attached to the textured plastics widely used in the industry.

Application	TLS 2200® Labels	IDXPERT™ Labels	LaserTab Labels	Benchtop Thermal Transfer Labels
<b>DESI-STRIP INSERTS</b>				
1.938 x 0.375 (48.26 x 9.52) white	PTL-40-412	-	LAT-176-124	THT-150-412
<b>LOCATION ID</b>				
1.000 x 0.375 (25.40 x 9.52) white	PTL-16-422	-	LAT-8-707	THT-3-422
1.000 x 0.375 (25.40 x 9.52) clear	PTL-16-430	-	LAT-8-712	THT-3-430
1.000 x 0.500 (25.40 x 12.70) white	PTL-17-422	X-17-422	LAT-7-707	THT-5-422
1.000 x 0.500 (25.40 x 12.70) clear	PTL-17-430	-	LAT-7-712	-
1.500 x 0.375 (38.10 x 9.52) white	PTL-45-422	-	LAT-47-707	THT-147-422
1.500 x 0.375 (38.10 x 9.52) clear	PTL-45-430	-	LAT-47-712	THT-147-430
1.500 x 0.500 (38.10 x 12.70) white	PTL-29-422	X-29-422	LAT-41-707	THT-37-422
1.500 x 0.500 (38.10 x 12.70) clear	PTL-29-430	-	LAT-41-712	THT-37-430
<b>OUTLET / JACK ID</b>				
0.500 x 0.375 (12.70 x 9.52) white	PTL-44-422	-	LAT-45-707	THT-148-422
0.500 x 0.375 (12.70 x 9.52) clear	PTL-44-430	-	LAT-45-712	THT-148-430
0.500 x 0.500 (12.70 x 12.70) white	PTL-7-422	X-7-422	LAT-46-707	THT-149-422
0.500 x 0.500 (12.70 x 12.70) clear	PTL-7-430	-	LAT-46-712	THT-149-430
<b>GENERAL USE</b>				
0.375 (9.52) cont. white	PTL-46-422	XC-375-422	-	-
0.375 (9.52) cont. clear	PTL-46-430	-	-	-



► Communication symbols make labeling easier. PTL-7-422



► Desi-strip inserts are cut to size, saving time and money. PTL-40-412

## Closet Hardware Labels



► Patch Panel with *LAT-46-707*



► Labels sized for patch panels and faceplate ports. *PTL-39-422*

1	5	6	11	16	21
26	31	36	41	46	

- Our LabelMark™/WIN software automatically spaces for 3, 4, 5 pairs and serializes backbone and horizontal for 110 block labeling. *LAT-177-124-BL*

Application	TLS 2200® Labels	IDXPRT™ Labels	LaserTab Labels	Benchtop Thermal Transfer Labels	Benchtop Thermal Size - Inch (mm)
<b>PATCH PANEL - 4 PORT</b>					
2.800 x 0.375 (71.12 x 9.52)	PTL-39-422	-	LAT-43-707	THT-16-423	3.000 x 0.250 (76.20 x 6.35)
<b>PATCH PANEL - 6 PORT</b>					
3.600 x 0.375 (91.44 x 9.52)	PTL-39-422	-	LAT-44-707	-	
<b>PATCH PANEL - ID PORT</b>					
0.500 x 0.375 (12.70 x 9.52) white	PTL-44-422	-	LAT-45-707	THT-148-422	0.500 x 0.375 (12.70 x 9.50)
0.500 x 0.375 (12.70 x 9.52) clear	PTL-44-430	-	LAT-45-712	THT-148-422	0.500 x 0.375 (12.70 x 9.50)
0.500 x 0.500 (12.70 x 12.70) white	PTL-7-422	X-7-422	LAT-46-707	THT-149-422	0.500 x 0.500 (12.70 x 12.70)
0.500 x 0.500 (12.70 x 12.70) clear	PTL-7-430	-	LAT-46-712	-	
0.500 x 0.750 (12.70 x 19.05) clear	PTL-11-432	-	-	-	
0.750 x 0.250 (19.05 x 6.35) white	PTL-10-423	-	-	-	
0.750 x 0.250 (19.05 x 6.35) clear	PTL-10-432	-	-	-	
<b>PATCH PANEL / CONTINUOUS TAPES</b>					
0.250 (6.35) x continuous clear	PTL-101-432	-	-	-	
0.250 (6.35) x continuous white	PTL-101-483	-	-	-	
0.250 (6.35) x continuous white	PTL-101-489	-	-	-	
0.375 (9.52) x continuous white	PTL-46-422	XC-375-422			
0.375 (9.52) x continuous clear	PTL-46-430	-			
<b>110 BLOCKS*</b>					
7.900 x 0.475 (200.66 x 12.07)	-	-	LAT-177-124*	-	
<b>BIX BLOCKS*</b>					
6.625 x 0.625 (168.28 x 15.87)	-	-	LAT-178-759*	-	
<b>LUCENT PATCHMAX*</b>					
3.000 x 0.500 (76.20 x 12.70)	-	-	LAT-175-124*	-	

\* These labels are available in Blue (BL), Brown (BR), Gray (GY), Green (GN), Orange (OR), Purple (PL), Red (RD) and Yellow (YL) to comply with TIA/EIA 606-A.

### ► LASERTAB LANPAK

Brady offers a LAT-LANPAK, which features 10 sheets of all of the label sizes below. These sizes represent our more popular label sizes:

Part Number	Application	Size Inch (mm)	Part Number	Application	Size Inch (mm)
LAT-8-707	Faceplate	1.000 x 0.375 (25.40 x 9.53)	LAT-47-707	Faceplate/Patch Panel	1.500 x 0.500 (38.10 x 12.70)
LAT-18-361	4 Pair Cable	1.000 x 1.330 (25.40 x 33.78)	LAT-176-124	Faceplate Desi-Strips	1.980 x 0.380 (50.29 x 9.65)
LAT-44-707	6 Port Grouping on Patch Panel	3.600 x 0.375 (91.44 x 9.53)	LAT-177-124-WH	110 Blocks, in White	7.910 x 0.480 (200.91 x 12.19)
LAT-45-707	Faceplate/Patch Panel	0.500 x 0.375 (12.70 x 9.53)	LAT-177-124-BL	110 Blocks, in Blue	7.910 x 0.480 (200.91 x 12.19)

## Racks, Panels, Frames and Miscellaneous Applications



Brady offers a wide range of label sizes for racks, shelves, telecomm main grounding bus bars, firestopping locations, pathways and general equipment marking in the telecommunications closet.

Application	TLS 2200® Labels	LaserTab Labels	LaserTab Size - Inch (mm)	Benchtop Thermal Transfer Labels	Benchtop Thermal Transfer Labels Size - Inch (mm)
<b>GENERAL ID</b>					
0.500 x 2.000 (12.70 x 50.80)	PTL-61-483	-	-	-	-
0.750 x 4.000 (19.05 x 101.60)	PTL-62-483	-	-	THT-107-483	4.000 x 300 ft (101.60 x 9144 m)
0.750 x 8.000 (19.05 x 203.20)	PTL-63-483	-	-	-	-
1.375 x 1.000 (34.93 x 25.40)	PTL-65-483	-	-	-	-
1.000 x 1.500 (25.40 x 38.10)	PTL-31-483	-	-	-	-
1.500 x 0.750 (38.10 x 19.05)	PTL-30-483	-	-	-	-
1.500 x 1.500 (38.10 x 38.10)	PTL-32-483	-	-	-	-
2.000 x 1.000 (50.80 x 25.40)	PTL-20-422	LAT-13-707	1.875 x 0.833 (47.63 x 21.16)	THT-17-483	2.000 x 1.000 (50.80 x 25.40)
2.000 x 1.000 (50.80 x 25.40)	PTL-20-483	-	-	THT-17-483	2.000 x 1.000 (50.80 x 25.40)
3.000 x 1.000 (76.20 x 25.40)	PTL-22-422	LAT-24-747	1.750 x 1.000 (44.45 x 25.40)	THT-18-483	3.000 x 1.000 (76.20 x 25.40)
3.000 x 1.900 (76.20 x 48.26)	PTL-37-422	LAT-32-747	3.000 x 0.900 (76.20 x 22.86)	THT-19-483	3.000 x 2.000 (76.20 x 50.80)
3.000 x 1.900 (76.20 x 48.26)	PTL-37-483	-	-	THT-19-483	3.000 x 2.000 (76.20 x 50.80)
4.000 x 1.000 (101.60 x 25.40)	PTL-23-422	LAT-33-707	2.000 x 1.437 (50.80 x 36.50)	THT-107-483	4.000 x 300 ft (101.60 x 9144 m)
4.000 x 1.000 (101.60 x 25.40)	PTL-23-483	-	-	THT-107-483	4.000 x 300 ft (101.60 x 9144 m)
4.000 x 1.900 (101.60 x 25.40)	PTL-38-422	LAT-34-707	3.000 x 1.437 (76.20 x 36.50)	THT-55-483	4.000 x 2.000 (101.60 x 50.80)
4.000 x 1.900 (101.60 x 48.26)	PTL-38-483	-	-	THT-55-483	4.000 x 2.000 (101.60 x 50.80)

### ▶ CONTINUOUS TAPES FOR TLS 2200® AND IDXPERT™

Application	TLS 2200® Labels	IDXPERT™ Labels
<b>PATCH PANEL / GENERAL ID</b>		
0.250 (6.35) x continuous clear	PTL-101-432	-
0.250 (6.35) x continuous white	PTL-101-483	-
0.250 (6.35) x continuous white	PTL-101-489	-
0.375 (9.52) x continuous white	PTL-46-422	XC-375-422
0.375 (9.52) x continuous clear	PTL-46-430	-
0.500 (12.70) x continuous white	PTL-8-422	-
0.500 (12.70) x continuous clear	PTL-8-430	-
0.500 (12.70) x continuous clear	PTL-8-432	-
0.500 (12.70) x continuous white	PTL-8-439•	-
0.500 (12.70) x continuous white	PTL-8-483	-
0.500 (12.70) x continuous white	PTL-8-489	-
1.000 (25.40) x continuous white	PTL-42-439•	-
1.000 (25.40) x continuous clear	PTL-42-432**	-
1.000 (25.40) x continuous white	PTL-42-483	XC-1000-483/XC-1000-422
1.000 (25.40) x continuous white	PTL-42-489	-
1.300 (33.02) x continuous clear	PTL-100-432***	-
1.300 (33.02) x continuous white	PTL-100-483***	-
1.300 (33.02) x continuous white	PTL-100-489***	-
1.900 (48.26) x continuous clear	PTL-43-432	-
1.900 (48.26) x continuous white	PTL-43-489	-
1.900 (48.26) x continuous white	PTL-43-483	-
1.900 (48.26) x continuous white	PTL-43-439•	-

\*\* B-432 material available in additional label sizes. Red, white and blue ribbon colors also available.

\*\*\* This is the minimum width continuous tape needed to print a 3/4" font.

- Available in color.



## Brady PC-Based and Portable Labeling Systems



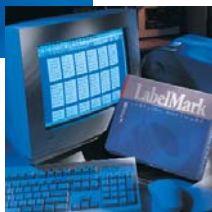
### IDXPERT™ HANDHELD LABELER

Here is the newest 300 dpi thermal, handheld labeling system that has everything it takes to make you an Identification Expert!. Label patch panels, outlet faceplates and cables. Identify racks, bays, frames, public network and data centers all with one versatile tool. The IDXPert is the first handheld cartridge based labeling system that can print die-cut labels, self-laminating labels and sleeves as well as continuous tapes. Visit [www.bradyid.com/idxpert](http://www.bradyid.com/idxpert) for all the details.

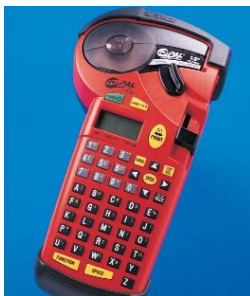


### TLS2200® THERMAL LABELING SYSTEM

Designed from the ground up for the communications industry, the portable TLS 2200® Thermal Labeling System and the desktop TLS PC Link™ Thermal Labeling System are light-weight, easy-to-use and allow you to print labels whenever and wherever you need them. Both printers provide clean, dark text on die-cut labels that don't fall off. No more cutting office labeler tapes to size!



Optional LabelMark™ software allows you to easily format cable, faceplate and closet labels. You can download information from spreadsheets and cable management software packages to save time. The software includes templates for all the Brady labels designed for your application, and has built in templates to automatically format 110 block and patch panels. You can then print directly to the TLS 2200 or TLS PC Link printer using its PC connectivity feature. LabelMark software is included with the purchase of a TLS PC Link printer.



### ID PAL™ LABELING TOOL

ID Pal™ is an affordable, handheld label printer designed for wire, cable, faceplate and industrial labeling applications. The ID Pal is the ideal solution for the low volume label printing associated with Moves, Adds and Changes (MACs). With its low price, you can afford to equip everyone on your crew with an ID Pal.

#### IDPAL™ LABEL CARTRIDGE SELECTION CHART

Application	Material/Color	Max. Service Temperature	Part Number 0.375" (9.53 mm)	Part Number 0.500" (12.70 mm)	Part Number 0.750" (19.05 mm)	Roll Length Feet (m)
☐ □ ● ■■	Nylon Cloth B-499 / Black on White	194 (90) 30 days	PAL-375-499	PAL-500-499	PAL-750-499	19' (5.79 m)
☐ □ ● ■■	Vinyl B-439 / Black on White	104 (40) 30 days	PAL-375-439	PAL-500-439	PAL-750-439	21' (6.40 m)
☐ □ ● ■■	Vinyl B-439 / Black on Yellow	104 (40) 30 days	PAL-375-439-YL	PAL-500-439-YL	PAL-750-439-YL	21' (6.40 m)
☐ □ ● ■■	Vinyl B-439 / Black on Red	104 (40) 30 days	PAL-375-439-RD	PAL-500-439-RD	PAL-750-439-RD	21' (6.40 m)
☐ □ ● ■■	Vinyl B-439 / Black on Orange	104 (40) 30 days	PAL-375-439-OR	PAL-500-439-OR	PAL-750-439-OR	21' (6.40 m)
☐ □ ● ■■	Vinyl B-439 / Black on Green	104 (40) 30 days	PAL-375-439-GR	PAL-500-439-GR	PAL-750-439-GR	21' (6.40 m)
☐ □ ● ■■	Vinyl B-439 / Black on Blue	104 (40) 30 days	PAL-375-439-BL	PAL-500-439-BL	PAL-750-439-BL	21' (6.40 m)
☐ □ ● ■■	Polyester B-430 / Black on Clear	212 (100) 30 days	PAL-375-430	PAL-500-430	PAL-750-430	21' (6.40 m)
☐ □ ● ■■	Polyester B-423 / Black on White	248 (120) 30 days	PAL-375-423	PAL-500-423	PAL-750-423	21' (6.40 m)

Plus... each cartridge comes preloaded with its own application-specific ribbon.

#### Application Key

☐	Smooth/Flat Surface	■■■	Textured Surface
□	Wire/Cable/Curved Surface	■■■■	Highly Textured Surface

## Voice/Data Identification Materials Chart

Brady Material #	Print Technology	Properties & Applications
B-109	TLS 2200	Durable, tear resistant tag
B-124	Laser	A paper tag stock designed for desi-strip inserts and laser printing
B-145	TLS 2200	Tear-resistant 2-side printable tag material
B-361	Laser	Low-profile self-laminating laser printable material
B-412	TLS 2200	Durable tagstock for desi-strip inserts
B-422	TLS 2200 / IDXPERT	White label with an aggressive adhesive for textured plastics
B-423	TLS 2200 / IDXPERT / ID Pal	Electronic PCB ID and component bar code label and rating plate, outlet and patch panel identification
B-425	TLS 2200	Tough, flexible label for flagging small fiber strands
B-427	TLS 2200 / IDXPERT	Self-laminating material for cable marking
B-430	TLS 2200 / ID Pal	Clear polyester material
B-432	TLS 2200	Clear polyester with an aggressive adhesive for texture plastics
B-439	TLS 2200 / ID Pal	Vinyl label available in white, yellow, orange, red and other colors
B-483	TLS 2200 / IDXPERT	Ultra aggressive glossy polyester label for powder coated surfaces
B-489	TLS 2200	Ultra aggressive matte polyester label for powder coated surfaces
B-499	TLS 2200 / ID Pal	Low-profile through-conduit wire marking, component and general labeling
B-642	TLS 2200	Low-smoke and flame spread label for Plenum applications
B-707	Laser	White label with an aggressive adhesive for textured plastics
B-712	Laser	Clear label with an aggressive adhesive for textured plastics
B-747	Laser	White polyester label

## ANSI/TIA/EIA 606-A Standard

### OVERVIEW

The ANSI/TIA/EIA 606-A Standard specifies administration for a generic telecommunications cabling system that will support a multi-product, multi-vendor environment. It provides a uniform administration approach that is independent of applications, which may change several times throughout the life of the telecommunications infrastructure. It establishes guidelines for owners, end users, manufacturers, consultants, contractors, designers, installers and facilities administrators involved in the administration of the telecommunications infrastructure.

Use of this Standard is intended to increase the value of the system owner's investment in the infrastructure by reducing the labor expense of maintaining the system, extending the useful economic life of the system and providing effective service to users.

### CLASSES OF ADMINISTRATION

There are four classes of administration that all cabling systems fall within:

**Class 1** is for systems within a single building having only one Telecommunications Room (TR) that all workstation cabling runs to. The TR, Horizontal Links (HL's) and Telecommunications Main Grounding Busbar (TMGB) are required to be labeled and administered. If the system owner wishes to document pathways or firestopping locations, Class 2 administration should be used.

**Class 2** is for systems within a single building that are served by multiple TR's. Class 2 includes administration for backbone cabling, multi-element grounding and bonding, firestopping as well as all the items within Class 1.

**Class 3** is for systems spanning multiple buildings, known as a campus environment. Class 3 includes administration for buildings and inter-building cabling as well as all elements of Class 2. Administration of Pathways, Spaces and Outside Plant elements is recommended.

**Class 4** is for systems spanning multiple campuses, known as multi-site system. Class 4 included administration for each site as well as all elements of Class 3. Administration of Pathways, Spaces and Wide area network connections is recommended.

# ANSI/TIA/EIA 606-A Standard

## IDENTIFIERS

A unique identifier is associated with each element of the infrastructure to be identified and serves as the key to finding the recorded information within the administration system selected.

Identifier	Description of Identifier	Class of Administration				Identifier	Description of Identifier	Class of Administration			
		1	2	3	4			1	2	3	4
fs	telecommunications space (TS)	R	R	R	R	[b1-fs1]/[b2-fs2]-n.d	interbuilding backbone pair or optical fiber			R	R
fs-an	horizontal link	R	R	R	R	b	building			R	R
fs-TMGB	telecommunications main grounding busbar	R <sup>1</sup>	R <sup>1</sup>	R <sup>1</sup>	R <sup>1</sup>	c	campus or site				R
fs-TGB	telecommunications grounding busbar	R <sup>1</sup>	R <sup>1</sup>	R <sup>1</sup>	R <sup>1</sup>	fs-UUU.n.d(q)	intrabuilding backbone pathway element	0	0	0	0
fs1/fs2-n	intrabuilding backbone cable		R	R	R	fs1/fs2-UUU.n.d(q)	intrabuilding backbone pathway between two TSs or areas	0	0	0	0
fs1/fs2-n.d	intrabuilding backbone pair or optical fiber		R	R	R	[b1-fs1]/[b2-fs2]-UUU.n.d(q)	interbuilding pathway or element			0	0
f-FSLn(h)	firestop location		R	R	R						
[b1-fs1]/[b2-fs2]-n	interbuilding backbone cable		R	R	R						

R = Required O = Optional

## REQUIRED IDENTIFIERS & RECORDS

The following is a list of the required records for each of the four classes of administration. An administration system shall provide a method to find the record associated with any specific identifier. The administration system may be managed using a paper-based system, general-purpose spreadsheet software, or special-purpose cable management software.

**Class 1 systems require the identifiers and records for the following:**

- TS identifier
- Horizontal Links
- Telecommunications Main Grounding Busbar (TMGB)
- Telecommunications Grounding Busbar (TGB)

**Class 2 systems require the identifiers and records for the following:**

- All class 1 elements
- Intra-building Backbone Cable
- Intra-building Backbone pair or strand
- Firestopping

**Class 3 systems require the identifiers and records for the following:**

- All class 2 elements
- Intra-building Backbone Cable
- Intra-building Backbone pair or strand
- Building

**Class 4 systems require the identifiers and records for the following:**

- All class 3 elements
- Site or Campus

## LABELING VISIBILITY AND DURABILITY

The size, color and contrast of all labels should be selected to ensure that the identifiers are easily read. Labels should be visible during the installation of and normal maintenance of the infrastructure. Labels should be resistant to the environmental conditions at the point of installation (such as moisture, heat or ultraviolet light) and should have a design life equal to or greater than that of the labeled component.

### Mechanical generation

To maximize legibility, all labels shall be printed or generated by a mechanical device and shall not be written by hand.

Visit [www.bradyid.com/datacomm](http://www.bradyid.com/datacomm) for more information.

- ▶ Download a free demo copy of labeling software
- ▶ View the Brady Label Finder, a complete list of labels for major hardware vendors

DISTRIBUTED BY:

# Voice / Data Identification 2004/2005



6555 West Good Hope Road, Milwaukee, WI 53223 U.S.A.  
CUSTOMER SERVICE ▶ PH: 1-888-BRADYGO (1-888-272-3946) ▶ FX: 1-800-292-2289  
TECHNICAL SUPPORT ▶ PH: 1-800-643-8766 ▶ FX: 1-800-358-6767

56 Leek Crescent, Richmond Hill, Ontario L4B 1H1 CANADA  
CUSTOMER SERVICE ▶ PH: 1-800-263-6179 ▶ FX: 1-800-387-4935  
TECHNICAL SUPPORT ▶ PH: 1-888-262-7576



▶ [www.bradyid.com](http://www.bradyid.com) ▶ [www.bradycorp.com](http://www.bradycorp.com) for worldwide locations

AN ISO-9001 REGISTERED FIRM ©2004 BRADY Corporation, Printed in U.S.A. All rights reserved. Specifications subject to change without notice. MS100216 10-KK-04-1.2