

15kV	200A Loadbreak Feed-Thru Insert	1602A3R
------	---------------------------------	---------



Note: Red PBT Interface Shield available soon

Features:

- 15kV, 200 Amp Loadbreak Rated
- Transform radial feed transformer into loop-feed unit
- Provide extra tap for elbow arrester connection
- Peroxide-cured insulation and jacket
- Provision for groundwire connection
- Includes bail assembly
- Full 360° positioning

1602A3R Loadbreak Feed-Thru Insert

Applications:

The Elastimold® 1602A3R bushing insert is fully rated with two 15kV class, 200 Amp load break bushing interfaces. The feed-thru bushing insert fits a standard ANSI bushing well interface and provides the capability of creating a tap position in an existing apparatus installation and transforming a radial-feed transformer into a loop-feed unit. It may be used as the bushing interface for connecting shielded cable to the following:

- Sub-surface transformers
- Generators
- Pad mounted transformers
- Switchgear
- Regulators
- Reclosers

Designed for use as an apparatus bushing interface and provide extra tap connection, the 1602A3R is easily installed in an Elastimold® universal bushing well and mated with an appropriate Elastimold® product.

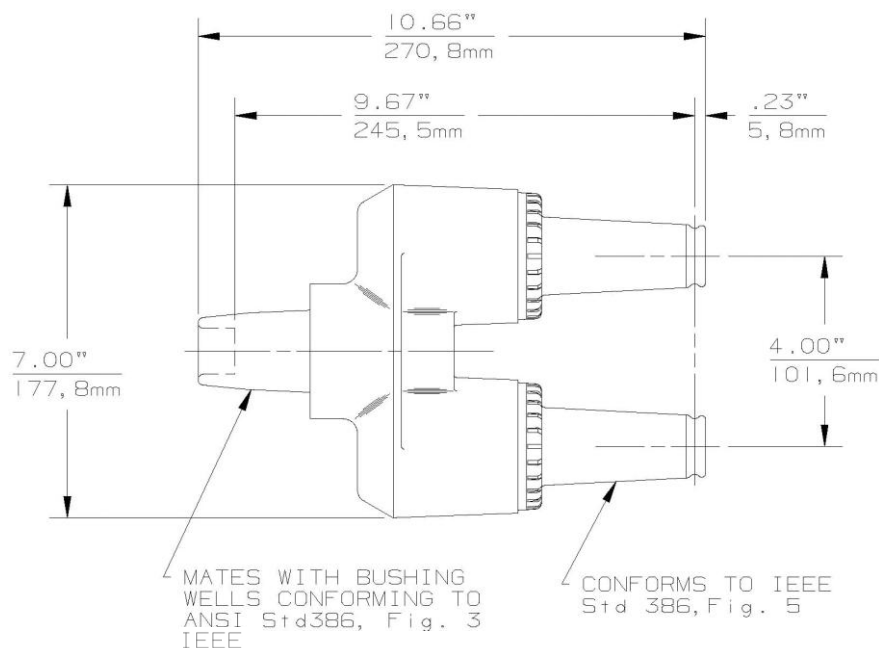
Ratings:

Meets ANSI/IEEE Standard 386, Latest Revision

For 15kV Voltage Class:

8.3kV Max Phase-to-Ground – Operating Voltage
14.4kV Max Phase-to-Phase
95kV BIL – Impulse Withstand (1.2 x 50 microsecond wave)
34kV AC – One minute withstand
53kV DC – 15 minutes withstand
11kV AC – Corona Extinction @ 3pC sensitivity
200 Amp – Continuous and Loadbreak
10kA Sym – 10 Cycles Momentary & Fault Close

15kV	200A Loadbreak Feed-Thru Insert	1602A3R
------	---------------------------------	---------



Ordering Instructions:

To order, specify number **1602A3R** bushing insert.

Each kit contains the following:

1	Bushing Insert	1602A3R
2	Protective shipping cap	1601-APC-1
3	Lubricant	82-08
1	Installation Instruction	IS-0063
1	Bail assembly	2702-16

Notes:

Full 360° positioning. Includes bail assembly to secure feed-thru insert to bushing well.