

ETERNA

LIGHTING





# ETERNA

---

## L I G H T I N G

### ***Our Mission:***

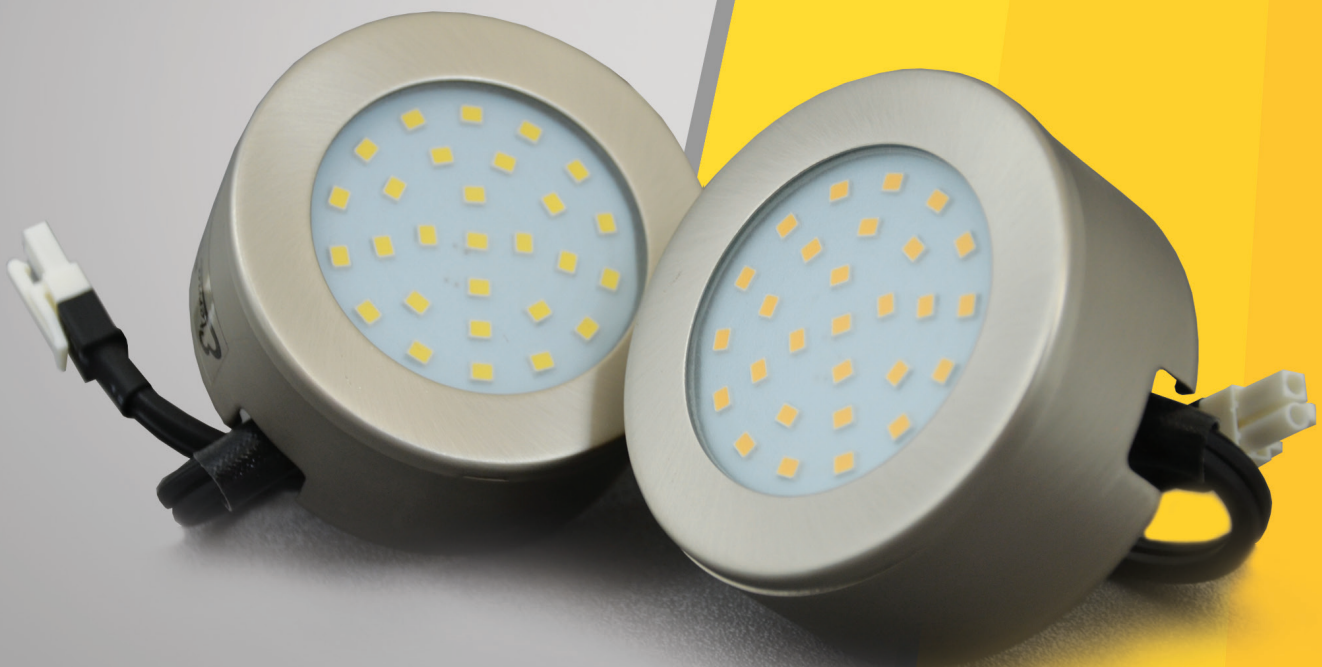
*Eterna Lighting caters the highest quality lighting and detailed service to the woodworking, store fixture, and display industries. You can depend on us to provide you with a product line that adjusts to all your needs including being energy-conscious and conforming to UL and ETL standards. Additionally, we guarantee that our brand is thoroughly tested for superior quality and maximum efficiency.*

*Since Eterna Lighting is family-owned, we especially value your experience with our company. Therefore, we train our staff to be knowledgeable, dependable, and dedicated to customer service. You may rest assured that if you have any questions or doubts regarding your lighting application, we will be able to inform and guide you through the entire process.*

*Through innovation, experience, and new and improved technology, we are pleased to offer you a specification driven product line that will ensure the right application for your lighting needs.*

*Thank you for choosing Eterna Lighting and we will continue to work hard to maintain a leading product line that you can count on each and every time.*

### ***Eterna Lighting***



**Table of Contents**

*120V 3" Mini Collection* ..... 1

*120V 3" Mini Collection Round*..... 3

*120V 3" Mini Collection Square* ..... 4

*120V GU-10 LED Spring Loaded Series* ..... 6

*120V / 12V MMSQ and MSQ Spring Loaded Series* ..... 7

*120V / 12V SQHL and SHL Spring Loaded Series* ..... 8

*120V XHL-LED Infinity Puck Ligh* ..... 10

*12V X3D-LED Puck Light Series* ..... 11

*12V XFHL-LED Puck Light Series* ..... 12

*12V LED Mini Lighting Series* ..... 14

*24V LED BAR Series* ..... 16

*24V LED BAR Accessories and Transformers* ..... 17

*24V LED BAR Accessories and Transformers* ..... 18

*12V / 24V LED Tape Light Series* ..... 20

*12V / 24V LED Tape 3528 Series* ..... 22

*12V / 24V LED Tape 3528 Wet Series* ..... 24

*12V / 24V LED Tape 5050 RGB Series* ..... 26

*LED Tape Extrusions* ..... 28

*Custom Lighting Services* ..... 29

*LED Tape Accessories* ..... 30

*LED Tape Accessories* ..... 31

*LED Tape Accessories* ..... 32

*120V Slim Line LED Series* ..... 33

*C3i Comptible Accessories* ..... 34



<i>T4 Slim Line Fluorescents Series</i> .....	35
<i>SL T5 Slim Line Fluorescents Series</i> .....	36
<i>12V / 24V Electronic LED Power Supplies</i> .....	37
<i>12V / 24V Electronic LED Power Supplies</i> .....	38
<i>12V / 24V Transformers Series</i> .....	39
<i>12V / 24V Transformers Series</i> .....	40
<i>12V Plug and Play Electronic Transformer</i> .....	41
<i>12V Hard Wire Electronic Transformer</i> .....	42
<i>LED Millwork Lighting Accessories</i> .....	43
<i>LED Millwork Lighting Accessories</i> .....	44
<i>Dimmers and Switches</i> .....	45
<i>12V/24VDC In-Line Dimmers and Switches</i> .....	46
<i>LUTRON Skylark Series</i> .....	47
<i>LUTRON Diva / Maestro Series</i> .....	48
<i>LUTRON Claro Series</i> .....	49
<i>SORAA Bulb Series</i> .....	50
<i>LED Bulbs</i> .....	51
<i>LED Bulbs</i> .....	52
<i>Fluorescent Bulbs</i> .....	53
<i>Fluorescent Bulbs</i> .....	54
<i>Halogen and Xenon Bulbs</i> .....	55
<i>Definitions</i> .....	56
<i>Terms and Conditions</i> .....	57





**Product Description:**

A highly anticipated shallow recessed fixture available in remodel, new construction, or IC rated applications where insulated ceiling are a factor. This fixture is 120V-GU10 based and can use both standard knockout connectors and our C3I interconnecting system to link fixtures in series. 6 Different stylized adjustable and non-adjustable round and square trims will accept halogen or LED bulbs while also being able to hold a diffuser, eggcrate louver, or spread lens. Available in White and Brushed Nickel.

**Specifications:**

- Construction – Housing is made of Aluminum and Steel
- Die Cast Trims
- Power - 120V – May be used with MC Cable, Romex, Greenfield, and or C3I Interconnecting cables
- Light Source – Replaceable 120V Halogen or LED Bulb
- Low Profile Design
- Remodel or New Construction
- IC rated can available
- Vapor Proof trims available



**GU-3RH-C3I-120V**  
**GU-3RH-KO-120V**



**GU-3NC-HANGER**

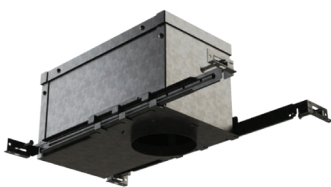
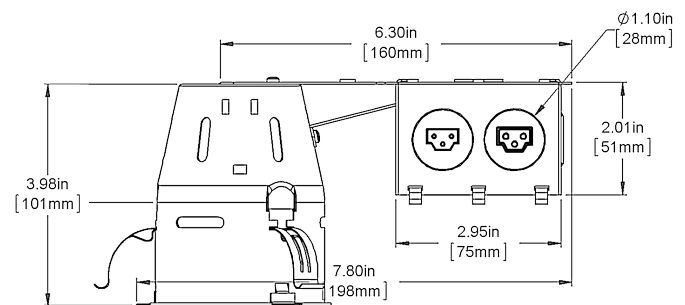


**GU-3NC-C3I-120V**  
**GU-3NC-KO-120V**



**Grounded Flexible Interconnecting Cables**

SLE-06G	6" Interconnecting cable
SLE-12G	12" Interconnecting cable
SLE-24G	24" Interconnecting cable
SLE-36G	36" Interconnecting cable
SLE-48G	48" Interconnecting cable
SLE-72G	72" Interconnecting cable
SLG-PC	72" Grounded power cord
SLG-PC90	90° 72" Grounded power cord



**GU-3IC-CAN**



**GU-3FKO**



**SLG-PC**

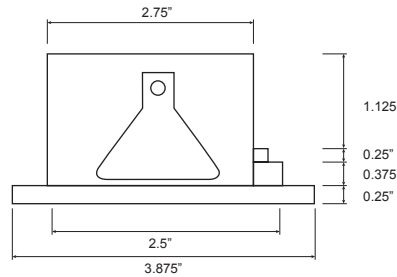


**SLE-06G**





**GU-3RA-WH • GU-3RA-BN**



**Product Description:**

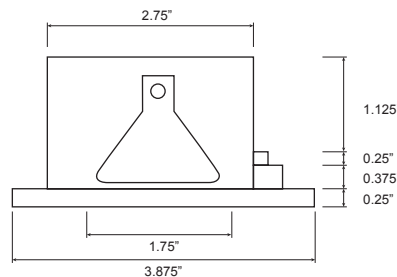
Minimum profile adjustable trim

**Specifications:**

- Die cast aluminum construction
- For use with 3" housing
- Utilizes one GU-10 or MR-16 Bulb
- Available in White (WH) and Brush Nickel (BN)
- 15° adjustability



**GU-3RP-WH • GU-3RP-BN**



**Product Description:**

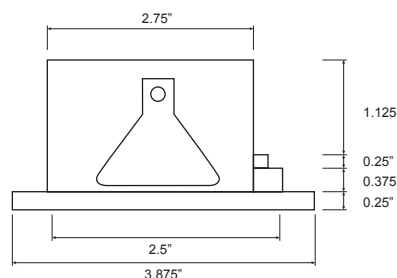
Minimum profile downlight trim

**Specifications:**

- Die cast aluminum construction
- For use with 3" housing
- Utilizes one GU-10 or MR-16 Bulb
- Available in White (WH) and Brush Nickel (BN)



**GU-3RRS-WH • GU-3RRS-BN**



**Product Description:**

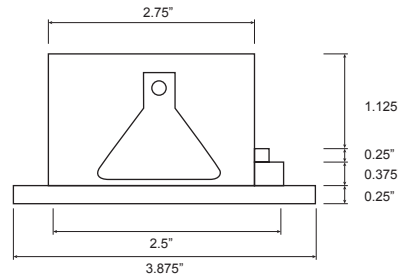
Minimum profile downlight vapor proof wet location trim

**Specifications:**

- Die cast aluminum construction with frosted glass
- For use with 3" housing
- Utilizes one GU-10 or MR-16 Bulb
- Available in White (WH) and Brush Nickel (BN)



GU-3SQA-BN • GU-3SQA-WH



**Product Description:**

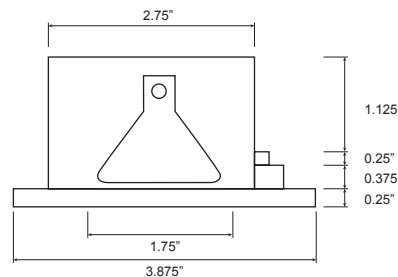
Minimum profile adjustable trim

**Specifications:**

- Die cast aluminum construction
- Utilizes one GU-10 or MR-16 Bulb
- Available in White (WH) and Brush Nickel (BN)
- 15° adjustability



GU-3SQP-BN • GU-3SQP-WH



**Product Description:**

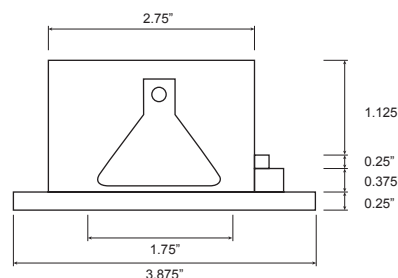
Minimum profile downlight trim

**Specifications:**

- Die cast aluminum construction
- For use with 3" housing
- Utilizes one GU-10 or MR-16 Bulb
- Available in White (WH) and Brush Nickel (BN)



GU-3SQSS-BN • GU-3SQSS-WH



**Product Description:**

Minimum profile downlight vapor proof wet location trim

**Specifications:**

- Die cast aluminum construction with frosted glass
- For use with 3" housing
- Utilizes one GU-10 or MR-16 Bulb
- Available in White (WH) and Brush Nickel (BN)



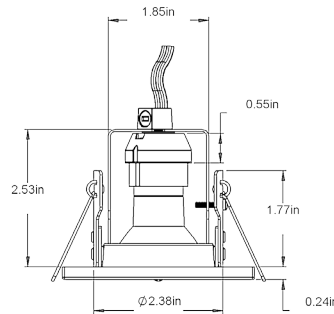




**SQUARE GU-10-LED**

**Specifications:**

- Single Swivel Light
- Does not require a transformer
- Fully assembled and ready to plug in
- Includes a replaceable LED 8W GU-10 bulb
- Has 6 Ft. male polarized power cord
- Spring loaded
- 90 degree capability
- Fully dimmable with incandescent dimmer
- Available in 2700K, 3000K, 4000K and 6000K color temperature
- Also available in other wattages
- Available in Brushed Chrome, Black, White and Chrome

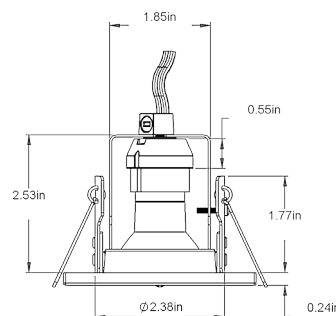


**GUSQ-LED-BC**

**ROUND GU-10-LED**

**Specifications:**

- Single Swivel Light
- Does not require a transformer
- Fully assembled and ready to plug in
- Includes a replaceable LED 8W GU-10 bulb
- Has 6 Ft. male polarized power cord
- Spring loaded
- 90 degree capability
- Fully dimmable with incandescent dimmer
- Available in 2700K, 3000K, 4000K and 6000K color temperature
- Also available in other wattages
- Available in Brushed Chrome, Black, White and Chrome



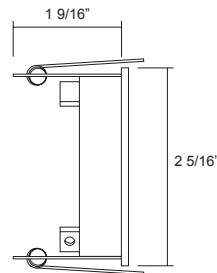
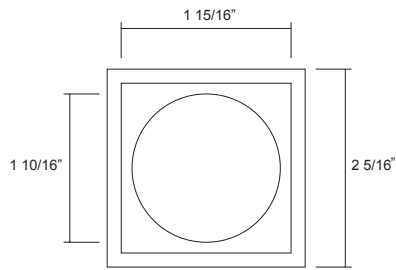
**GURD-LED-WH**



### MMSQ-LED-16

#### Specifications:

- Square miniature trim
- Low voltage and energy efficient
- Spring loaded
- Includes 12V LED 8W MR-16 or 120V LED 8W GU-10 bulb
- Fully dimmable with incandescent dimmer for 120V or ELV dimmer for 12V
- Available in 3000K, 4000K and 6000K color temperature
- Available in other wattages and beam spreads
- Includes MR-DC socket for 12V or a GU-6FSA for 120V
- Die cast aluminum
- For use with our 12V LED power supply
- Available in Matte White (MW) or Silver Gray (SG)
- Marine Grade (MG) Available upon request
- Can be used in 2, 3, 4 and 5 light adaptors



**MMSQ-LED-16-WH**

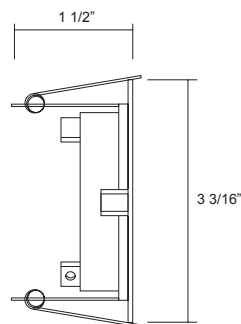
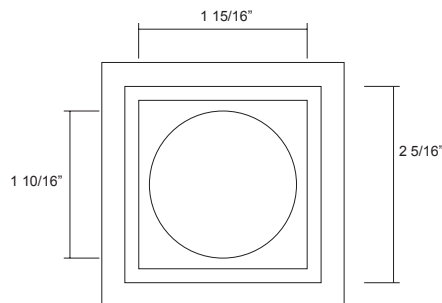


**MR-DC**

### MSQ-LED-16

#### Specifications:

- Square trim
- Low voltage and energy efficient
- Spring loaded
- Includes 12V LED 8W MR-16 or 120V LED 8W GU-10 bulb
- Fully dimmable with incandescent dimmer for 120V or ELV dimmer for 12V
- Available in 3000K, 4000K and 6000K color temperature
- Available in other wattages and beam spreads
- Includes MR-DC socket for 12V or a GU-6FSA for 120V
- Die cast aluminum
- For use with our 12V LED power supply
- Available in Matte White (MW) or Silver Gray (SG)
- Marine Grade (MG) Available upon request
- Can be used in 2, 3, 4 and 5 light adaptors



**MSQ-LED-16-SG**



**LED-DRIVER-12V**



**LED-2MDC-12**



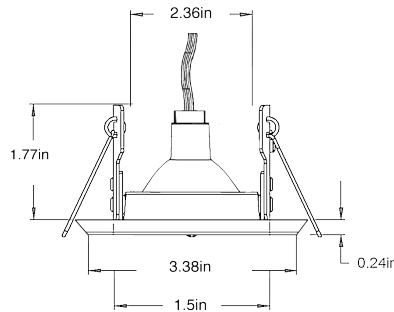
**GU-6FSA**



**SQUARE SQHL-LED**

**Specifications:**

- Single square swivel light
- Low voltage and energy efficient
- Spring loaded
- Includes 12V LED 8W MR-16 or 120V LED 8W GU-10 bulb
- 90 degree capability
- Fully dimmable with incandescent dimmer for 120V or ELV dimmer for 12V
- Available in 2700K, 3000K, 4000K and 6000K color temperature
- Available in other wattages and beam spreads
- Includes MR-DC socket for 12V or a GU-6FSA for 120V
- For use with our 12V LED power supply
- Available in Brushed Chrome, Black, White and Chrome
- Can be used in 2, 3, 4 and 5 light adaptors



**SQHL-LED-BC**

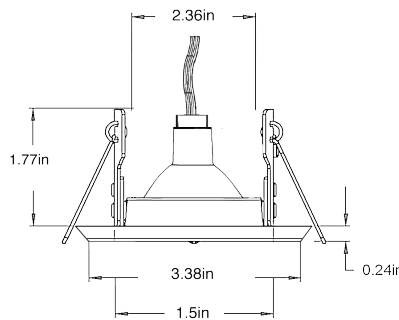


**MR-DC**

**ROUND SHL-LED**

**Specifications:**

- Single round swivel light
- Low voltage and energy efficient
- Spring loaded
- Includes 12V LED 8W MR-16 or 120V LED 8W GU-10 bulb
- 90 degree capability
- Fully dimmable with incandescent dimmer for 120V or ELV dimmer for 12V
- Available in 2700K, 3000K, 4000K and 6000K color temperature
- Available in other wattages and beam spreads
- Includes MR-DC socket for 12V or a GU-6FSA for 120V
- For use with our 12V LED power supply
- Available in Brushed Chrome, Black, White and Chrome
- Can be used in 2, 3, 4 and 5 light adaptors



**SHL-LED-WH**



**LED-DRIVER-12V**



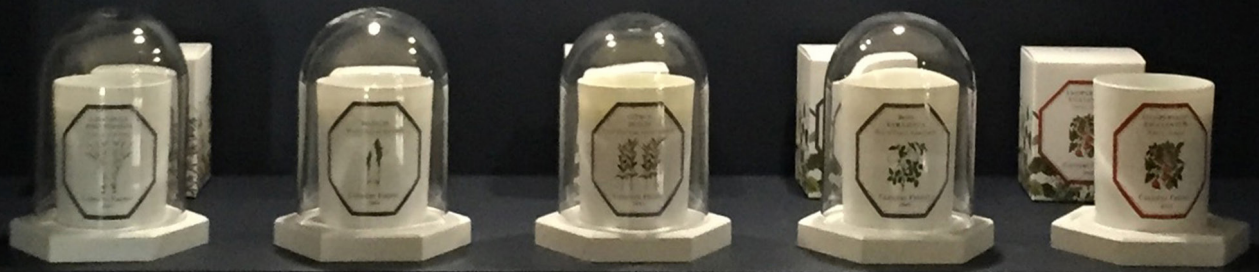
**LED-2MDC-12**



**GU-6FSA**

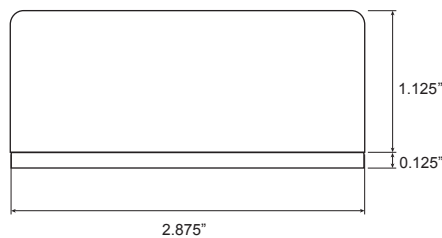




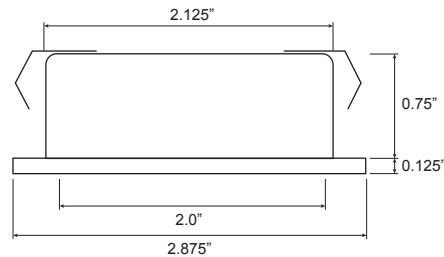




**XHL-LED-BC**



**Surface Mounted**



**Recessed Mounted**

**Product Description:**

Fully assembled and ready to plug in LED puck light. This low profile light is ideal for kitchen cabinets, wall units, store fixtures and furniture. It has dual mounting options which allows you to install either recessed or surface mounted. Their ability to interconnect in series up to 50 fixtures with one power cord allows for cleaner and more efficient installations.

**Specifications:**

- 3W LED SMD 230 Lumens
- Does not require a transformer
- Fully assembled and ready to plug in
- Has a protective frosted diffuser glass
- Fully dimmable with ELV Dimmer
- All metal fixture
- Able to interconnect in series
- Available in 3000K and 5000K
- Available in Brushed Chrome, Black, White and Chrome
- 6' Power cord sold separately



**XHL-LED-24-CC**



**XHL-LED-PC**



**X3D- LED**

**Product Description:**

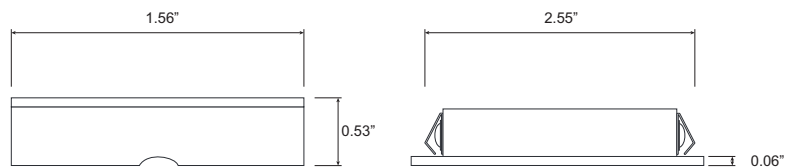
Low profile ideal for kitchen cabinets, wall units, furniture, etc. Dual mounting option. Able to interconnect with 3 - 5 light harness.

**Specifications:**

- 12VDC Constant voltage power consumption/FT.
- 3.92W
- Beam angle: 120°
- Surface or recess mount (suitable for recess mount only inside cabinet/shelf)
- 36 in. female DC plug
- 22/2 AWG
- Fully Dimmable
- Available in Brushed Aluminum (BA), White (W) and Black (B)
- 1 Year Eterna Lighting product warranty



**X3D-LED-BA**



**LED Y ADAPTOR**

**Specifications:**

- Female DC connectors to 2 male connectors
- For use with LED-BAR and Tape



**LED-2MDC-12  
LED-3MDC-12  
LED-4MDC-12  
LED-5MDC-12**

**ELECTRONIC PLUG IN  
AND DESKTOP POWER SUPPLIES**

**Specifications:**

- Input Voltage 100 - 240V
- Output Voltage 12V
- Available in 12W, 24W, 36W, 48W, 60W



**LED-DRIVER-60W-12V**



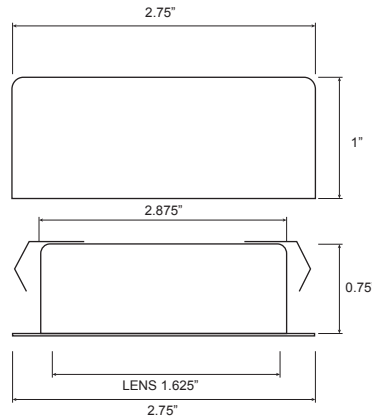
## XFHL-LED

### Product Description:

Low profile ideal for kitchen cabinets, wall units, furniture, etc. Dual mounting option. Able to interconnect with 2, 3, 4 and 5 light harness.

### Specifications:

- Requires an LED-DRIVER-12V transformer
- Fully assembled and ready to plug in
- Fully dimmable
- Dual mounting options (recessed or surface mounted)
- Has a protected frosted diffuser glass
- All metal fixture
- Available in warm white, cool white and day light
- Available in Brushed Chrome, Black, White and Chrome
- 1 Year Eterna Lighting product warranty

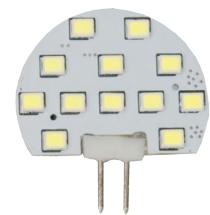


XFHL-LED

## JC-G4 LED Bulb

### Specifications:

- SMD Bulb type
- 2.2 Watts
- 12 Volts
- 30 000 Hours average life
- Output 200 Lumens
- Available in 3K, 4K and 5K

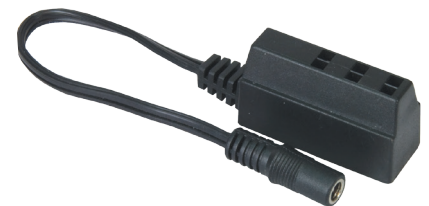


LED-SMD-JCG4-3K

## LED THREE LIGHT DISTRIBUTION HUB

### Specifications:

- For use with model XFHL series
- DC female



LED-DIS3-DC  
LED-DIS6-DC

## ELECTRONIC PLUG IN AND DESKTOP POWER SUPPLIES

### Specifications:

- Input Voltage 100 - 240V
- Output Voltage 12V
- Available in 12W, 24W, 36W, 48W, 60W



Class  
2

LED-DRIVER-60W-12V





### LPL-12 Single LED Mini Down Light

#### Product Description:

Size: Hole Size - 2 1/8"  
Fixture Height - 1"  
Fixture Diameter - 2 1/2"

#### Specifications:

- Features a 12 point LED board with a total consumption of 1.25Watts
- Has a protective clear diffuser glass
- Has dual mounting options; may be recessed or surface mounted
- All metal and includes a metal surface mount
- Can be interconnected (up to 9 – 1.25W individual units using supplied 96" total lead cable with female mox connectors in conjunction with our UL listed 12W plug-in transformer model # TR-LPL-12W
- Electrical standard: Input 100-240V, 50-60Hz, 450mA / output 12V, 1000mA
- Available in multiple color temperatures(Warm White 3000K, Cool White 5000K or Day Light 6400K)
- Available in Gold (G), Chrome (C), Black (B), White (W), Brushed Chrome (BB), Brushed Brass (BB) and Antique Brass (AB)



LPL-12

### LPL-21 Single LED Mini Down Light

#### Product Description:

Size: Hole Size - 2 1/8"  
Fixture Height - 1"  
Fixture Diameter - 2 1/2"

#### Specifications:

- Features a 21 point LED board with a total consumption of 1.25Watts
- Has a protective clear diffuser glass
- Has dual mounting options; may be recessed or surface mounted
- All metal and includes a metal surface mount
- Can be interconnected (up to 6 – 1.8W individual units using supplied 96" total lead cable with female mox connectors in conjunction with our UL listed 12W plug-in transformer model # TR-LPL-12W
- Electrical standard: Input 100-240V, 50-60Hz, 450mA / output 12V, 1000mA
- Available in multiple color temperatures(Warm White 3000K, Cool White 5000K or Day Light 6400K)
- Available in Gold (G), Chrome (C), Black (B), White (W), Brushed Chrome (BB), Brushed Brass (BB) and Antique Brass (AB)



LPL-21

### TR-LPL-12W Transformer

#### Specifications:

- Sets include 2, 3, or 5 ready to plug-in LED mini down lights with supplied
- UL listed 12W TR Series Transformer



TR-LPL-12W







**LED LIGHT BAR**

**Product Description:**

New aluminum L.E.D. light bar, the perfect low consumption super bright led slim line solution for low profile applications. Used widely in edge lighting, ceilings, light boxes and the store fixture display industries. This practical and easy to use light bar can be used to bring light to a variety of architectural applications and is very consumer friendly.

**Specifications:**

- Samsung 5730 LED
- 560 Lumens per foot
- Available in 5 sizes: 6 ,12 ,24 ,36 and 48"
- Available frosted in 2700K
- Aluminum Profile with diffuser
- Can be interconnected without additional wiring
- 24v system for longer runs
- Available in 2700K, 3000K, 4000K and 5000K
- Includes mounting clips for easy installation
- Individual sizes include mounting clips and 6" connector cables
- Fully dimmable



LED-BAR-48-27K-24V-FR  
LED-BAR-48-3K-24V  
LED-BAR-48-4K-24V  
LED-BAR-48-5K-24V

LED-BAR-36-27K-24V-FR  
LED-BAR-36-3K-24V  
LED-BAR-36-4K-24V  
LED-BAR-36-5K-24V

LED-BAR-24-27K-24V-FR  
LED-BAR-24-3K-24V  
LED-BAR-24-4K-24V  
LED-BAR-24-5K-24V

LED-BAR-12-27K-24V-FR  
LED-BAR-12-3K-24V  
LED-BAR-12-4K-24V  
LED-BAR-12-5K-24V

LED-BAR-6-27K-24V-FR  
LED-BAR-6-3K-24V  
LED-BAR-6-4K-24V  
LED-BAR-6-5K-24V

PART #	LENGTH	CURRENT	WATTAGE	LM	DIODES
LED-BAR-6-24V	6"	100MA	2.4W	280LM	7
LED-BAR-12-24V	12"	200MA	4.8W	560LM	14
LED-BAR-24-24V	24"	400MA	9.6W	1120LM	28
LED-BAR-36-24V	36"	600MA	14.4W	1680LM	42
LED-BAR-48-24V	48"	800MA	19.2W	2240LM	56



\*Also available with frosted lens

**HW-T54/84 HARDWIRE JUNCTION BOX FOR C3I SERIES**

**Specifications:**

- Multi tap durable plastic housing
- On/Off master switch
- Easy installation with supplied mounting screws
- Grounded modular female outlet for interconnecting LED-BAR series
- Grounded convenience outlet for any type of under counter lighting not exceeding 5 amps
- Electrical standard 120V AC – 600W -5A

Length - 3 3/4"  
Height - 1 1/4"  
Width - 2 1/4"



**LED-BAR-HW-BOX**

**LED Y ADAPTOR**

**Specifications:**

- Female DC connectors to 2 male connectors
- For use with Model LED-BAR, LED Tape and other DC products



**LED-2MDC-12  
LED-3MDC-12  
LED-4MDC-12  
LED-5MDC-12**

**MALE TO FEMALE DC EXTENSION**

**Specifications:**

- Female DC connectors to 1 male connectors
- For use with Model LED-BAR, LED Tape and other DC products



**LED-1MDC-12  
LED-1MDC-24  
LED-1MDC-36  
LED-1MDC-48**

**FEMALE DC POWER FEED**

**Specifications:**

- Female DC 6" power feed
- For use with Model LED-BAR products
- Also available in 36"



**LED-BAR-PF-DC  
LED-BAR-PF-DC-36**

**FEMALE HARDWIRE POWER FEED**

**Specifications:**

- Female 6" power feed
- For use with Model LED-BAR products
- Also available in 36"



**LED-BAR-HW-PF  
LED-BAR-HW-PF-36**



### TOUCH PANEL

#### Specifications:

- Input Voltage 12 - 24VDC
- Load current 4A x 3CH Max 12A
- Grey scale level 4096
- Dimming range 5% - 100%
- Max output power 144W / 288W (12V/24V)



LED-D1-W

### ELECTRONIC DESKTOP POWER SUPPLY

#### Specifications:

- Input Voltage 100 - 240V
- Output Voltage 12 - 24V
- Available in 36W, 48W, 60W, 72W



LED-DRIVER-48W-24V

### ELECTRONIC PLUG IN POWER SUPPLY

#### Specifications:

- Input Voltage 100 - 240V
- Output Voltage 12 - 24V
- Available in 12W, 24W



LED-DRIVER-24W-24V  
LED-DRIVER-12W-24V

### LED BAR EXTENSION

#### Specifications:

- Can be used to join fixtures
- Allows easy installation for different angles
- Available in 12", 24", 36" and 48"

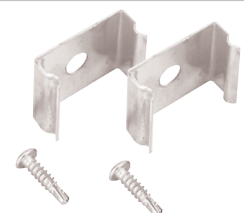


LED-BAR-6-EXT

### LED BAR MOUNTING HARDWARE

#### Specifications:

- Aluminum "U" channel clips
- For use with model LED-BAR products



U CHANNEL CLIP





## **12V / 24V LED Tape Light Series**

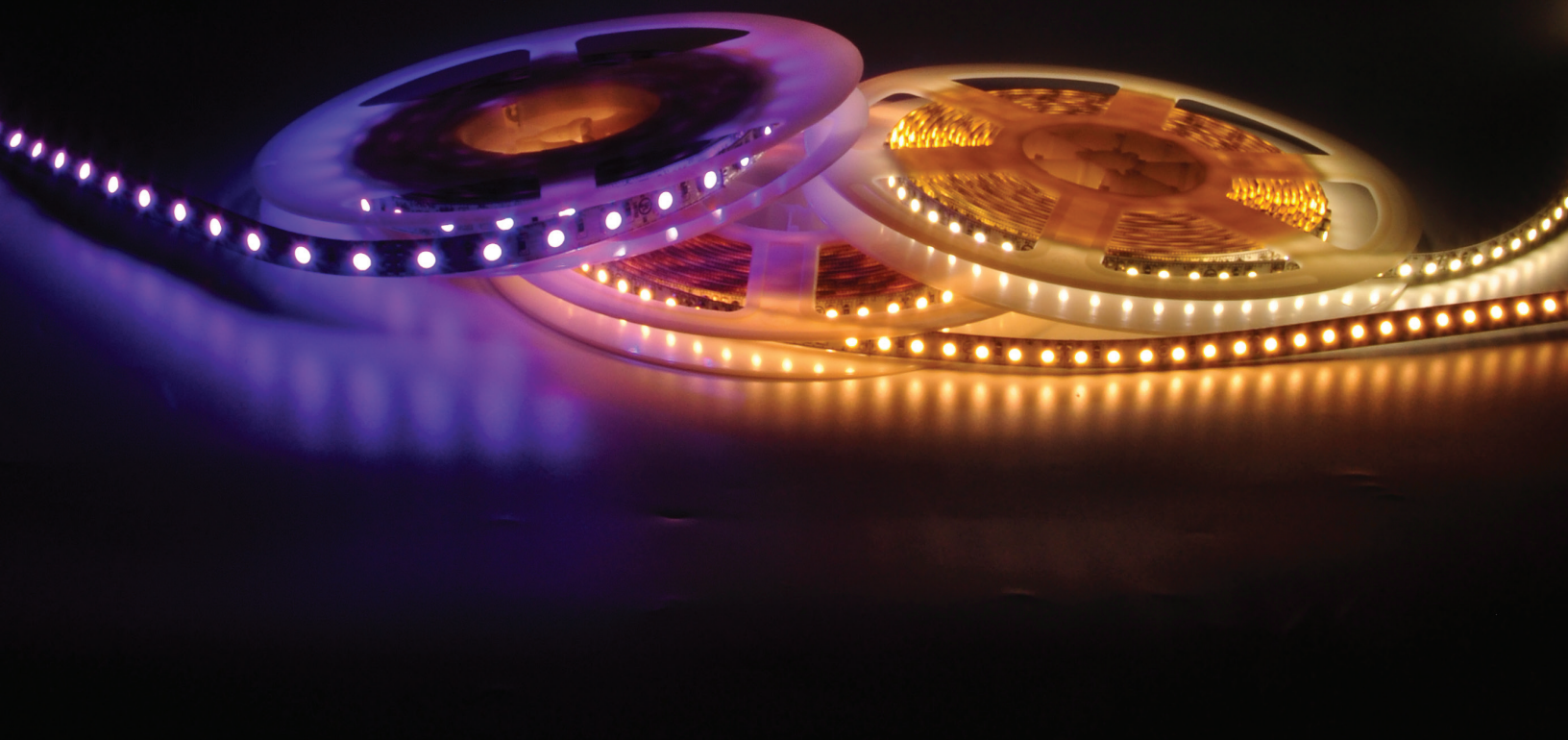
### **ETERNA LED TAPE LIGHT SERIES**

LED is now one of the most versatile light sources because of flexible LED tape. You find the greatest variation in this form of LED because the tape can be used under cabinets, desks, and shelves for easy indirect lighting or to create cove lighting.

Our packaging process for LED tape ensures the right color temperature and lumen output for you every time. We achieve this by using a small controlled “binning process”. Binning sorts each LED diode into the right color category. Naturally, the color temperature of the LED diodes ranges from warmer whites in the 2000K to cooler whites in the 6400K range. With our binning method, you are guaranteed LED product within 100K of your desired color temperature.

In addition to providing you with a great variety of color temperatures, we also cater two alternate product dimensions which are 2.8 x 3.5 mm and 3.5 x 2.8 (read as “2835” and “3528”). The 2835 LED allows higher amounts of current, generates greater luminous flux, and emits even less heat because of a convenient heat sink attached to the back of the tape.

We are confident that our LED tape will conform to your lighting demands for each of your unique designs.









**Product Description:**

**Construction:** Flexible ribbon strip with heavy-duty peel off 3M tape

**Roll Length:** 5m (16.4FT)

**Tape Width:** 8mm

**Current:** 300 (12V) or 180 (24V)

**Wattage:** 3W/FT

**Voltage:** 12V or 24V

**Field Cuttable Length:** Every 2"

**Output:** 220 Lumens/ft 85CRI

**Max Run:** 32.8FT in 24V and 16.4 in 12V



LED-FLEX-3528

**Specifications:**

- Low profile LED Tape is ideal for kitchen cabinets, wall units, furniture, coves, accent lighting, walls, and ceilings
- Easy installation with 3M backing
- Install straight or bend to nearly any custom shape
- 50,000 hour average lifespan
- 3W per foot
- No harmful UV or IR
- Available in 12V and 24V
- Produces virtually no heat
- Fully dimmable with our dimmable transformers
- Field-cuttable at specified markers with a scissor
- Available in weatherproof (IP67)
- CUL Listed
- 120 Diodes / Meter
- Available in several color temperatures

Model #	Volts	Color Temperature	Diodes
LED-FLEX-3528	12V	2400K	60
	24V	2700K	120
		3000K	
		4000K	
		5000K	
		6000K	
		Amber	



LED-DRIVER-12V  
LED-DRIVER-24V



LED-2MDC-12



ETE-PRO-B









**Product Description:**

**Construction:** Flexible ribbon strip with silicon jacket  
**Roll Lenth:** 5m (16.4FT)  
**Tape Width:** 8mm  
**Current:** 300 (12V) or 180 (24V)  
**Wattage:** 3W/FT  
**Voltage:** 24V  
**Field Cuttable Length:** Every 2"  
**Output:** 220 Lumens/FT 85CRI  
**Max Run:** 32.8FT in 24V and 16.4 in 12V

**Specifications:**

- Low profile wet location LED Tape is ideal for kitchen cabinets, bathrooms and outdoor steps
- Easy installation
- Install straight or bend to nearly any custom shape
- 50,000 hour average lifespan
- 3W per foot
- No harmful UV or IR
- Available in 24V
- Produces virtually no heat
- Fully dimmable with our dimmable transformers
- Field-cuttable at specified markers with a scissor
- Weatherproof (IP67)
- CUL Listed
- 120 Diodes / Meter
- Available in several color temperature



**LED-FLEX-3528W**

Model #	Volts	Color Temperature	Diodes
LED-FLEX-3528W	24V	3000K	60
		6000K	120
		Amber	



**TR-LED-MAG-96-24**

**Class 2**



**ETE-LED-WET-CLIP**



**ETE-LED-WET-PF**



**ETE-PRO-B**









## Product Description:

24V RGB LED tape light is often used to dynamically change any environment into a beautiful themed space. With the right RGB DMX controller, you can transform the look with over 16 million color options.

**Construction:** Flexible ribbon strip with heavy-duty peel off 3M tape.

**Roll Lenth:** 5m (16.4FT)

**Tape Width:** 10mm

**Current:** 300 (12V) or 180 (24V)

**Wattage:** 4.4W/FT

**Voltage:** 12V or 24V

**Field Cuttable Length:** Every 4"

**Max Run:** 32.8FT in 24V and 16.4 in 12V

## Specifications:

- Low profile RGB LED Tape is ideal for kitchen cabinets, wall units, furniture, coves, accent lighting, walls, and ceilings
- Easy installation with 3M backing
- Install straight or bend to nearly any custom shape
- 50,000 hour average lifespan
- 4.4W per foot
- No harmful UV or IR
- Available in 12V and 24V
- Produces virtually no heat
- Fully dimmable with our dimmable transformers
- Field-cuttable at specified markers with a scissor
- Available in weatherproof (IP67)
- CUL Listed
- 60 Diodes / Meter



ETE-LED-FLEX-RGB



ETE-LED-FLEX-RGB+W

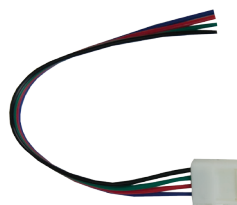
Model #	Volts	Color Temperature	Diodes
LED-FLEX-RGB	12V	RGB	60
	24V	RGB	60
LED-FLEX-RGB+W	24V	RGB+W-3K	30/30



TR-LED-100-24



TR-DMXS12



ETE-RGB10W1



ETE-PRO-B

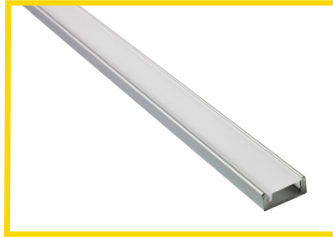
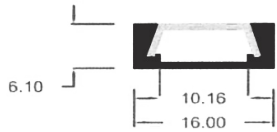




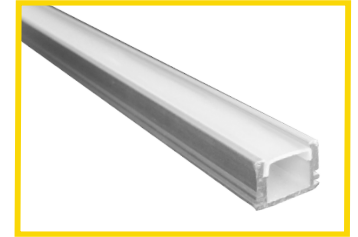
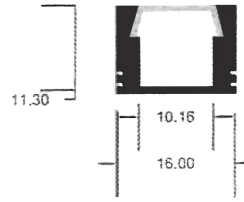


## Product Description:

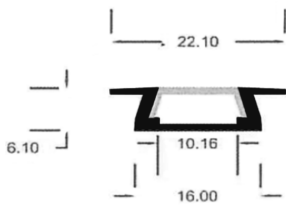
LED Aluminum profiles are the proper way of installing LED tape lighting. LED Aluminum profiles act as a protective housing for LED strips and are instrumental as a heat sink to keep the tape cool. Recessed versions are also designed to achieve many beautiful lighting design elements such as recessing in walls, ceilings, and tiles.



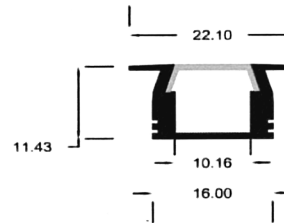
**ETE-PRO-A**



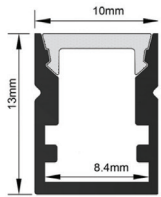
**ETE-PRO-B**



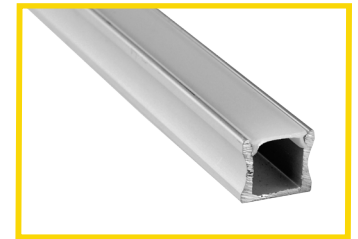
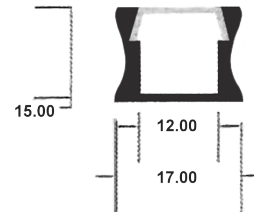
**ETE-PRO-C**



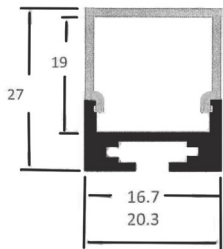
**ETE-PRO-D**



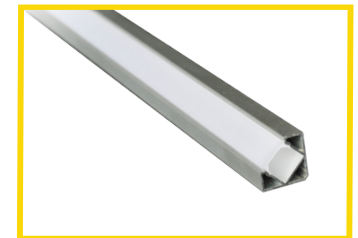
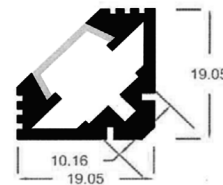
**ETE-PRO-E**



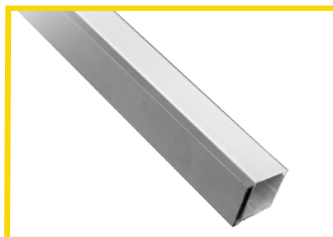
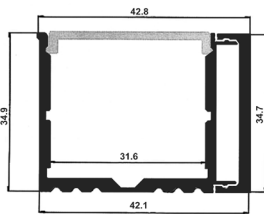
**ETE-PRO-F**



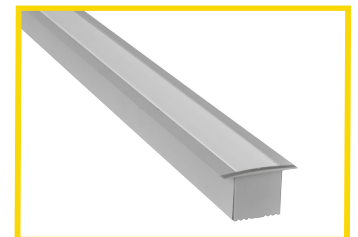
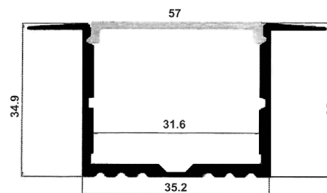
**ETE-PRO-P**



**ETE-PRO-H**



**ETE-PRO-X**



**ETE-PRO-Y**

\*All sizes are specified in millimeters



## **Custom Lighting Services**

*Allow us to simplify your future projects.*

*We offer solutions that tailor to all your lighting needs.*

### **Benefits of Custom Lighting**

Achieving your ideal lighting may be a challenge if you take on the task alone. Give us the opportunity to facilitate the lighting process by:

- Cutting costs
- Diminishing stress
- Reducing installation time

With all these factors off your plate, you will be able to focus your energy on other key elements of your project.

### **What We Can Do for You**

Our custom services include:

- Cutting extrusions to desired length
- Soldering and prepping LED product
- Equipping you with a custom array of color temperatures

If what you need is not listed above, our knowledgeable staff is ready to conform to your individual needs. Contact us for more information.



**LED 3528 90 HARDWIRE POWER FEED**

**Specifications:**

- For use with 8mm LED Tape



**ETE-SF18W**

**DC FEMALE CONNECTABLE POWER FEED 6"**

**Specifications:**

- For use with 8mm LED Tape



**ETE-SF18W-DC**

**LED 3528 90 FLEXIBLE JOINER**

**Specifications:**

- For use with 8mm LED Tape



**ETE-SF28W**

**LED 3528 DIRECT JOINER**

**Specifications:**

- For use with 8mm LED Tape

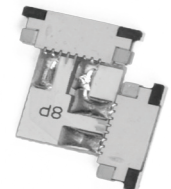


**ETE-SF28MM**

**LED 3528 90 DEGREE JOINER**

**Specifications:**

- For use with 8mm LED Tape

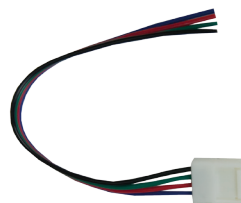


**ETE-S8W2**

**LED RGB 5050 HARDWIRE POWER FEED**

**Specifications:**

- For use with 10mm RGB LED Tape

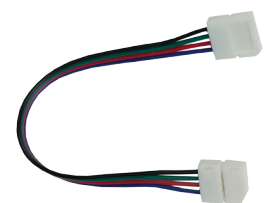


**ETE-RGB10W2**

**LED RGB 5050 FLEXIBLE JOINER**

**Specifications:**

- For use with 10mm RGB LED Tape



**ETE-RGB10W1**

**LED HARDWIRE DC MALE POWER FEED**

**Specifications:**

- Male DC connectors to hardwire lead
- For use with LED Tape and other DC products



**LED-HW-DCM**

**LED HARDWIRE DC POWER FEED**

**Specifications:**

- Female DC connector with hardwire lead
- For use with LED Tape and other DC products



**LED-HW-DC-PF**



**LED Y ADAPTOR**

**Specifications:**

- Female DC connectors to 2 male connectors
- For use with Model LED-BAR, LED Tape and other DC products



**LED-2MDC-12**

**LED 3 Y ADAPTOR**

**Specifications:**

- Female DC connectors to 3 male connectors
- For use with Model LED-BAR, LED Tape and other DC products



**LED-3MDC-12**

**LED 4 Y ADAPTOR**

**Specifications:**

- Female DC connectors to 4 male connectors
- For use with Model LED-BAR, LED Tape and other DC products



**LED-4MDC-12**

**LED 5 Y ADAPTOR**

**Specifications:**

- Female DC connectors to 5 male connectors
- For use with LED-BAR, LED Tape and other DC products



**LED-5MDC-12**

**RF BASE RGB CONTROLLER**

**Specifications:**

- Wireless RF remote
- Voltage DC 5-24V
- 3 Channel Controller



**E-RF-RGB-3CH**

**WI-FI APP BASE RGB CONTROLLER**

**Specifications:**

- Wireless remote and downloadable app or IOS device or Android
- Voltage DC 5-24V
- 3 Channel Controller



**E-WIFI-5V-2.4G**

**TOUCH PANEL**

**Specifications:**

- Input Voltage 12 - 24VDC
- Load current 4A x 4CH Max 16A
- Max output power 192W / 384W (12V/24V)



**LED-D4-RGB**

**TOUCH PANEL**

**Specifications:**

- Sleek glass design which sits 11mm from the wall
- Color / dimmer / speed palette
- Color temperature mixing & Multi-zone microSD memory
- Multi-room control with 500 scenes, 10 zones 1024 DMX channels
- USB & Ethernet connectivity for programming and RS232 control



**STICK-DE3**

**RGB SIGNAL AMPLIFIER FOR LONG DISTANCE INSTALLATIONS**

**Specifications:**

- RGB amplifier used to connect multiple color changing LEDs end to end
- 12-24 Volts DC, 12 Amp max
- Use with color changing RGB strips, bulbs & modules
- 3 signal input & output, +RGB



**LED-RGB-AMP**

**SUNLITE SUITE 2 RGB CONTROLLER**

**Specifications:**

- DMX S12 Decoder
- Can be controlled with DMX console or stand alone
- Voltage DC 24V
- 4 Channel Controller
- 12V / 192W - 24V / 384W



**TR-DMXS12**

**SUNLITE SUITE 2 RGB CONTROLLER**

**Specifications:**

- WiFi downloadable app or IOS device or Android software
- Can be controlled with DMX console or stand alone
- Voltage DC 5-24V
- Infra Red
- Midi, DMX-512



**DMX-RJ45**



**SUN-DMX-S2**





**Product Description:**

Aluminum LED Light Bar is the perfect low consumption super bright led slim line solution for multiple applications such as coves, under cabinet, show cases.

**Specifications:**

- Easy installation
- 50,000 hour average lifespan
- Can be interconnected without additional wiring
- Available in 2700K, 3000K, 4000K and 5000K
- Includes mounting clips and 6" connector cables
- Aluminum construction
- Dimmable with CFL and adaptative phase dimmer

LENGTH	VOLTAGE	WATTAGE	BEAM SPREAD	CRI	COLOR TEMP	LUMENS	DIODES	LENS
12"	120V	4.5W	120°	82 +	27K, 3K, 4K, 5K	98.99LPW	42 PCS	FROST
22"	120V	7.1W	120°	82 +	27K, 3K, 4K, 5K	105.34LPW	88 PCS	FROST
34"	120V	11.3W	120°	82 +	27K, 3K, 4K, 5K	108.28LPW	114 PCS	FROST
46"	120V	15.2W	120°	82 +	27K, 3K, 4K, 5K	111.59LPW	192 PCS	FROST

**ORDER NUMBER**

Model #	Size	Color Temperature	Volts
SL-LED	12"	2700K	120V
	22"	3000K	
	34"	4000K	
	46"	5000K	



**HW-T54/84 HARDWARE JUNCTION BOX FOR C3I SERIES**

Length - 3 3/4"  
Height - 1 1/4"  
Width - 2 1/4"

**Specifications:**

- Multi tap durable plastic housing
- On/Off master switch
- Easy installation with supplied mounting screws
- Grounded modular female outlet for interconnecting C3i series
- Grounded convenience outlet for any type of under counter lighting not exceeding 5 amps
- Electrical standard 120V AC – 600W -5A

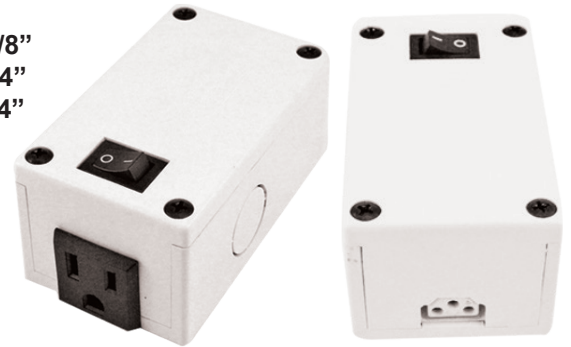


**HW-T54**

**T4 & T5 GROUNDED FLEXIBLE INTERCONNECTING CABLES**

Length - 3 5/8"  
Height - 1 3/4"  
Width - 2 1/4"

- |          |                             |
|----------|-----------------------------|
| SLE-06G  | 6" Interconnecting cable    |
| SLE-12G  | 12" Interconnecting cable   |
| SLE-24G  | 24" Interconnecting cable   |
| SLE-36G  | 36" Interconnecting cable   |
| SLE-48G  | 48" Interconnecting cable   |
| SLE-72G  | 72" Interconnecting cable   |
| SLG-PC   | 72" Grounded power cord     |
| SLG-PC90 | 90° 72" Grounded power cord |



**HW-T84**



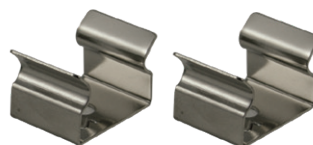
**SLE-06G**



**SLG-PC**



**SLC-C**



**SLC-U**

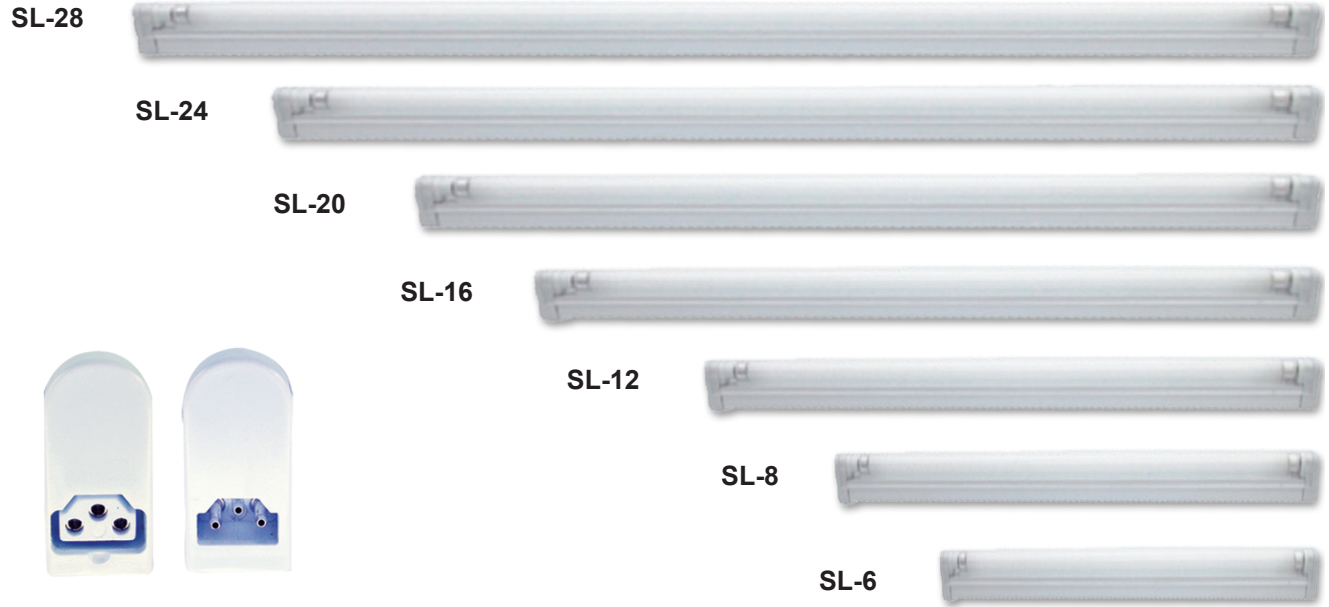


**SLC-L**





AVAILABLE IN 22W & 26W



MODEL # TYPE	LAMP TYPE	LAMP WATTS	LUMENS	L x W x H
SL-6 MG	F6T4	6W	300	10 3/8" x 3/4" x 1 9/16"
SL-8 MG	F8T4	8W	400	14 3/4" x 3/4" x 1 9/16"
SL-12MG	F12T4	12W	600	18 1/2" x 3/4" x 1 9/16"
SL-16MG	F16T4	16W	900	20 1/4" x 3/4" x 1 9/16"
SL-20MG	F20T4	20W	1250	22" x 3/4" x 1 9/16"
SL-22MG	F22T4	22W	1350	30" x 3/4" x 1 9/16"
SL-24MG	F24T4	24W	1800	35 1/2" x 3/4" x 1 9/16"
SL-26MG	F26T4	26W	2500	42" x 3/4" x 1 9/16"
SL-28MG	F28T4	28W	2900	47 1/4" x 3/4" x 1 9/16"

### Specifications:

- Has a slim all metal design
- Available in 9 sizes and wattages
- Includes a 6 FT grounded C3I modular power cord
- Includes a replaceable T-4 Lamp, available in 3000K(WW), 4100K(CW), 6400K(DX)
- Includes a protective plastic diffuser
- Includes (2) metal mounting brackets and screws
- Can be interconnected without additional wiring by using our 6" grounded flexible connector and direct connector
- C3I allows for the T4 Slim Line Series to be interconnected with the T-5 Slim Line Series
- Can be hardwired with our hard wire box (model # HW-T54 & HW-T84 note HW-T84 also has a convenience outlet)
- Fixture has a slim design ideal for cove lighting, under kitchen cabinets, store fixtures and display.
- Fixture has no RF interference
- Additional C3I accessories are available
- Electrical standard 120V AC 50-60Hz





MODEL # TYPE	LAMP TYPE	LAMP WATTS	LUMENS	L x W x H
SL-6 T5	F6T5	6W	300	10 3/8" x 3/4" x 2"
SL-8 T5	F8T5	8W	400	13 3/8" x 3/4" x 2"
SL-13T5	F13T5	13W	600	22 3/8" x 3/4" x 2"
SL-14T5	F14T5	14W	900	23" x 3/4" x 2"
SL-21T5	F21T5	21W	1250	35 1/2" x 3/4" x 2"
SL-28T5	F28T5	28W	2900	47 1/4" x 3/4" x 2"
SL-35T5	F35T5	35W	3650	59" x 3/4" x 2"

**Specifications:**

- Has a slim all metal design
- Available in 7 sizes and wattages
- Includes a 6 FT grounded C3I modular power cord
- Includes a replaceable T-5 lamp, available in 3000K(WW), 4100K(CW), 6400K(DX)
- Includes a protective plastic diffuser
- Includes (2) metal mounting brackets and screws
- Can be interconnected without additional wiring by using our 6" grounded flexible connector and direct connector
- C3I allows for the T5 Slim Line Series to be interconnected with the T-4 Slim Line Series
- Can be hardwired with our hard wire box (model # HW-T54 & HW-T84 note HW-T84 also has a convenience outlet)
- Fixture has a slim design ideal for cove lighting, under kitchen cabinets, store fixtures and display
- Has no RF interference
- Additional C3I accessories are available
- Electrical standard 120V AC 50-60Hz





**A/C LED POWER**

**Specifications:**

- Input voltage 120V AC
- Output voltage 12V AC
- UL1310 compliant
- Fully dimmable
- No minimum load



TR-RS12-60M-LED

**CONSTANT CURRENT POWER SUPPLY**

**Specifications:**

- Input voltage 90 - 246V AC
- Output voltage 3 - 9VDC
- Output current 350mA
- Output power 1 - 3W



TR-LCA003-RL-UNI

**CONSTANT CURRENT POWER SUPPLY**

**Specifications:**

- Input voltage 90 - 264V AC
- Output voltage 2 - 59V DC
- Output current 350mA
- Output power 18W



HAT-LCA018-UNI

**CONSTANT CURRENT POWER SUPPLY**

**Specifications:**

- Input voltage 120 - 277V AC
- Output voltage 24 - 72V DC
- Output current 350mA
- Output power 350mA - 25W



TR-LC25-0350Z-UNV

**CONSTANT CURRENT POWER SUPPLY**

**Specifications:**

- Input voltage 90 - 135V AC
- Output voltage 22 - 45V DC
- Output current 500mA
- Output power 22W



TR-MCC-22-0500

## ELECTRONIC POWER SUPPLY

### Specifications:

- Input Voltage 100 - 240V
- Available in 12V and 24V



TR-LED-70-12  
TR-LED-70-24

## ELECTRONIC POWER SUPPLY

### Specifications:

- Input Voltage 100 - 240V
- Available in 12V and 24V



TR-LED-100-12  
TR-LED-100-24

## ELECTRONIC POWER SUPPLY

### Specifications:

- Input Voltage 100 - 240V
- Available in 12V and 24V



TR-LED-150-12  
TR-LED-150-24

## ELECTRONIC POWER SUPPLY

### Specifications:

- Input Voltage 120V AC
- Output 12V DC
- Dimmable with any standard MLV/ Incandescent TRIAC-(Leading edge) dimmer
- Class 2
- Dimensions: 6.7" x 2.67" x 1.26"



TR-E20L12DC-KO  
TR-E40L12DC-KO  
TR-E60L12DC-KO

## ELECTRONIC POWER SUPPLY

### Specifications:

- Input Voltage 120V AC
- Output 24V DC
- Dimmable with any standard MLV/ Incandescent TRIAC-(Leading edge) dimmer
- Class 2
- Dimensions: 6.7" x 2.67" x 1.26"



TR-E20L24DC-KO  
TR-E40L24DC-KO  
TR-E60L24DC-KO  
TR-E96L24DC-KO



**ELECTRONIC POWER SUPPLY**

**Specifications:**

- Input Voltage 100 - 240V
- Output Voltage 24V
- Available in 100W



TR-LPV-100-24

**ELECTRONIC DESKTOP POWER SUPPLY**

**Specifications:**

- Input Voltage 100 - 240V
- Output Voltage 12 - 24V
- Available in 36W, 48W, 60W, 72W



LED-DRIVER-12V-48  
LED-DRIVER-24V-48

**ELECTRONIC PLUG IN POWER SUPPLY**

**Specifications:**

- Input Voltage 100 - 240V
- Output Voltage 12 - 24V
- Available in 12W, 24W



LED-DRIVER-12W-12  
LED-DRIVER-12W-24

**ELECTRONIC PLUG IN POWER SUPPLY**

**Specifications:**

- Input: 100-240V 50~60Hz / Output: 12V/12W
- Max. Load: 12W / Min. Load: 1W
- Secondary Volt: 11.6VAC 20 Khz / Weight: 4 oz.
- Input Current: 450mA / Output Current: 1000mA
- Plug-in style transformer
- Transformer can be used to connect up to 4 - 3W fixtures
- For use with our 12V SHL or SQHL LED lights only



TRM-SHL-12W

**ELECTRONIC PLUG IN POWER SUPPLY**

**Specifications:**

- Input: 100-240V 50~60Hz / Output: 12V/12W
- Max. Load: 12W / Min. Load: 1W
- Secondary Volt: 11.6VAC 20 Khz / Weight: 4 oz.
- Input Current: 450mA / Output Current: 1000mA
- Plug-in style transformer
- Transformer can be used to connect up to 9 - 1.25W fixtures
- For use with our 12V LPL lights only



TRM-LPL-12W

**LED DRIVER**

**Specifications:**

- Dimmable with any standard MLVTRIAC dimmer
- Dual protection - primary and secondary auto-reset circuit breakers
- Nema 3R Enclosure - Indoor/Outdoor
- Class 2
- ETL Listed
- Certified to CSA Standard



**Class 2**

**TR-LED-MAG-40-24**  
**TR-LED-MAG-40-12**

**LED DRIVER**

**Specifications:**

- Dimmable with any standard MLVTRIAC dimmer
- Dual protection - primary and secondary auto-reset circuit breakers
- Nema 3R Enclosure - Indoor/Outdoor
- Class 2
- ETL Listed
- Certified to CSA Standard



**Class 2**

**TR-LED-MAG-60-24**  
**TR-LED-MAG-60-12**

**LED DRIVER**

**Specifications:**

- Dimmable with any standard MLVTRIAC dimmer
- Dual protection - primary and secondary auto-reset circuit breakers
- Nema 3R Enclosure - Indoor/Outdoor
- Class 2 on 24V only
- Certified to CSA Standard



**Class 2**

**TR-LED-MAG-96-24**  
**TR-LED-MAG-100-12**

**LED DRIVER**

**Specifications:**

- Dimmable with any standard MLVTRIAC dimmer
- Dual protection - primary and secondary auto-reset circuit breakers
- Nema 3R Enclosure - Indoor/Outdoor
- Certified to CSA Standard



**TR-LED-MAG-150-24**  
**TR-LED-MAG-150-12**

**LED DRIVER**

**Specifications:**

- Dimmable with any standard MLVTRIAC dimmer
- Dual protection - primary and secondary auto-reset circuit breakers
- Nema 3R Enclosure - Indoor/Outdoor
- Certified to CSA Standard



**TR-LED-MAG-300-24**  
**TR-LED-MAG-300-12**





**Electronic 60W Transformer**

**Input:** 120V 50~60Hz  
**Output:** 12V/60W  
**Max. Load:** 60W  
**Min. Load:** 10W  
**Secondary Volt:** 11.6VAC 20 Khz  
**Input Current:** 0.5 Amps  
**Output Current:** 5 Amps

**Specifications:**

- UL recognized components
- Fuse protected
- For use with 12V halogen lights only
- Fully dimmable with a standard incandescent dimmer



**TR-60A1**

**Electronic 80W Transformer**

**Input:** 120V 50~60Hz  
**Output:** 12V/80W  
**Max. Load:** 80W  
**Min. Load:** 10W  
**Secondary Volt:** 11.5VAC 20 Khz  
**Input Current:** 0.66 Amps  
**Output Current:** 6.25 Amps

**Specifications:**

- UL recognized components
- Fuse protected
- For use with 12V halogen lights only
- Fully dimmable with a standard incandescent dimmer



**TR-80A3**

**Electronic 105W Transformer**

**Input:** 120V 50~60Hz  
**Output:** 12V/105W  
**Max. Load:** 105W  
**Min. Load:** 20W  
**Secondary Volt:** 11.6VAC 20 Khz  
**Input Current:** 0.8 Amps  
**Output Current:** 9.2 Amps

**Specifications:**

- UL recognized components
- Auto reset, soft start, short circuit and overload protected
- For use with 12V halogen lights only
- Fully dimmable with a standard incandescent dimmer



**TR-105A5**

**Electronic 150W Transformer**

**Input:** 120V 50~60Hz  
**Output:** 12V/150W  
**Max. Load:** 150W  
**Min. Load:** 20W  
**Secondary Volt:** 11.6VAC 20 Khz  
**Input Current:** 1.2 Amps  
**Output Current:** 12.9 Amps

**Specifications:**

- UL recognized components
- Auto reset, soft start, short circuit and overload protected
- For use with 12V halogen lights only
- Fully dimmable with a standard incandescent dimmer



**TR-150A3**

**Electronic 150W Transformer**

**Input:** 120V 50~60Hz  
**Output:** 12V/150W  
**Max. Load:** 150W  
**Min. Load:** 20W  
**Secondary Volt:** 11.6VAC 20 Khz  
**Input Current:** 1.2 Amps  
**Output Current:** 12.9 Amps

**Specifications:**

- UL recognized components
- Auto reset, soft start, short circuit and overload protected
- For use with 12V halogen lights only
- Fully dimmable with a standard incandescent dimmer



**TR-150A7**

## Electronic 60W Hardwire Transformer

**Input:** 120V 50~60Hz  
**Output:** 12V/60W  
**Max. Load:** 60W  
**Min. Load:** 10W  
**Secondary Volt:** 11.6VAC 20 KHz  
**Input Current:** 0.5 Amps  
**Output Current:** 5 Amps

### Specifications:

- UL recognized components
- Fuse protected
- For use with 12V halogen lights only
- Fully dimmable with a standard incandescent dimmer



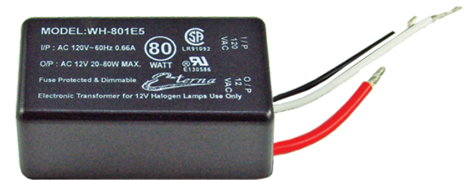
**TR-60HW**

## Electronic 80W Hardwire Transformer

**Input:** 120V 50~60Hz  
**Output:** 12V/80W  
**Max. Load:** 80W  
**Min. Load:** 10W  
**Secondary Volt:** 11.5VAC 20 KHz  
**Input Current:** 0.66 Amps  
**Output Current:** 6.25 Amps

### Specifications:

- UL recognized components
- Fuse protected
- For use with 12V halogen lights only
- Fully dimmable with a standard incandescent dimmer



**TR-80HW**

## Electronic 105W Hardwire Transformer

**Input:** 120V 50~60Hz  
**Output:** 12V/105W  
**Max. Load:** 105W  
**Min. Load:** 20W  
**Secondary Volt:** 11.6VAC 20 KHz  
**Input Current:** 0.8 Amps  
**Output Current:** 9.2 Amps

### Specifications:

- UL recognized components
- Auto reset, soft start, short circuit and overload protected
- For use with 12V halogen lights only
- Fully dimmable with a standard incandescent dimmer



**TR-105HW**

## Electronic 150W Hardwire Transformer

**Input:** 120V 50~60Hz  
**Output:** 12V/150W  
**Max. Load:** 150W  
**Min. Load:** 20W  
**Secondary Volt:** 11.6VAC 20 KHz  
**Input Current:** 1.2 Amps  
**Output Current:** 12.9 Amps

### Specifications:

- UL recognized components
- Auto reset, soft start, short circuit and overload protected
- For use with 12V halogen lights only
- Fully dimmable with a standard incandescent dimmer



**TR-150HW**

## Electronic 150W Hardwire Transformer

**Input:** 120V 50~60Hz  
**Output:** 12V/150W  
**Max. Load:** 150W  
**Min. Load:** 20W  
**Secondary Volt:** 11.6VAC 20 KHz  
**Input Current:** 1.2 Amps  
**Output Current:** 12.9 Amps

### Specifications:

- UL recognized components
- Auto reset, soft start, short circuit and overload protected
- For use with 12V halogen lights only
- Fully dimmable with a standard incandescent dimmer



**TR-150HW**



**10" CERAMIC SOCKET**

**Specifications:**

- Male molex connector allows you to convert almost every available trim to our plug-in style transformer system
- For use with 12V MR-11 or MR-16 bulbs



**MR-SC**

**SPT-1 FIVE LIGHT HARNESS**

**Specifications:**

- 1 Male and 5 Female molex connectors connectors allows you to connect up to 5 LED MR-16's
- For use with Model SHL-LED in conjunction with transformer TRM-LPL-12W



**5LH-M2F**

**SPT-1 TRANSFORMER EXTENSION CORD**

**Specifications:**

- Male and female molex connectors allow you to go 6FT from transformer to light
- For use with Model HL/SHL/MRL/SQHL in conjunction with transformer TR-60/80/105/150



**EXT-6FC**

**LED THREE LIGHT DISTRIBUTION HUB**

**Specifications:**

- Female 3 light DC connector allows you to go 6FT from transformer to light fixture
- For use with Model XFHL LED Series



**LED-DIS3-DC**

**LED SIX LIGHT DISTRIBUTION HUB**

**Specifications:**

- Female 6 light DC connector allows you to go 6FT from hub to light fixture
- For use with Model XFHL LED Series



**LED-DIS6-DC**

**DC MALE TO MINI MALE MOLEX**

**Specifications:**

- 6" DC mini male molex
- For use with 3 light and 6 light distribution hub



**LED-DCM-MM**

**MALE MOLEX TO MINI MALE MOLEX**

**Specifications:**

- 6" mini male molex
- For use with 3 light and 6 light distribution hub



**LED-M-MM**

**DC TO FEMALE MOLEX**

**Specifications:**

- 6" DC female molex
- For use with 5LH-M2F



**LED-DCF-FM**

**MALE MOLEX TO DC MALE**

**Specifications:**

- 6" DC male molex
- For use with 5LH-M2F



**LED-DCM-M**

**10" CERAMIC SOCKET**

**Specifications:**

- Female DC connector allows you to convert almost every available trim to our plug-in style transformer system
- For use with 12V MR-11 or MR-16 bulbs



**MR-DC**

**GU-6FSA**

**Specifications:**

- 6 FT. male polarized power cord with a 120V ceramic GU-10 based socket.
- Allows you to convert almost every available trim to our 120V GU-10 LED bulbs.
- Can be used in conjunction with our SHL and SQHL, MMSQ, MSQ series, and 3" trim collection.

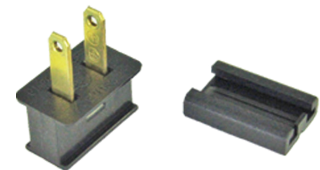


**GU-6FSA**

**SPT-1 MALE**

**Specifications:**

- Male attachment plugs are used to create extensions cords, power cords, and hardwiring lighting fixtures



**33L-B MALE PLUG**

**SPT-1 FEMALE**

**Specifications:**

- Female attachment plugs are used to create extensions cords, power cords, and hardwiring lighting fixtures



**77P-B POLARIZED FEMALE OUTLET**

**18/2 SPT-1 250 FT SPOOL**

**Specifications:**

- 105 Degrees - 300 Volts
- UL Listed



**SPT-1W**

**SPT-1B**



**SINGLE CIRCUIT METAL PUSH BUTTON SWITCH WITH 6" LEADS**

**Specifications:**

- 3 Amps 250V AC - 6 Amps 125V AC
- 1" shaft with adjustable ring
- On/Off sequence
- Available in gold (EX-107SG) and chrome (EX-107SC)



EX-107SC

EX-107SG

**SINGLE CIRCUIT GOLD METAL PUSH BUTTON SWITCH BOX**

**Specifications:**

- 120V AC 60Hz - 300W
- 10' SPT-2 power cord with 3' female polarized connector with 3 outlets
- 1" shaft with adjustable ring
- On/Off sequence



PW-300

**SINGLE CIRCUIT BLACK METAL DOOR SWITCH BOX**

**Specifications:**

- 120V AC 60Hz - 200W
- 10' SPT-2 power cord with 3' female polarized connector
- Ideal for kitchen cabinets, wall units, store fixtures and furniture
- Light on when door open, light off when door closed



PWDS-200

**THREE STAGE TOUCH DIMMER WITH 5' TOUCH SENSOR LEAD**

**Specifications:**

- 120V AC 60Hz - 200W
- 10' SPT-2 power cord with 3' female polarized connector with 3 outlets
- Touch plate is 2" in diameter, self adhesive and has a 10' lead
- Available in black finish
- For use with incandescent or halogen fixtures



TDM-300

**FULL RANGE ROTARY DIMMER**

**Specifications:**

- Designed with 1 1/2" threaded stem that can be used in used in woodwork up to 3/4" thick
- 120V AC 60Hz - 200W 10' SPT-2 power cord with 3' female outlet connectors
- Knobs are available in gold or black finish
- For use with incandescent or halogen fixtures



DS-S-12/24

**MAGNETIC DOOR SWITCH**

**Specifications:**

- DC 12V 50W Max
- DC 24V 100W Max



ETE-MDS-BZ

## IN-LINE DC RECESSED 4 STAGE TOUCH DIMMER SWITCH

### Specifications:

- 4-step touch (1 low light, 2 medium light, 3 high light, 4 turn off)
- Size 5/8" x 7/8" Diameter
- Drill hole size 18mm (11/16")
- 12V 24W
- 24V 48W



ETE-4ST-DC12V

## IN-LINE DC ON/OFF 12V/24V LED ROCKER SWITCH

### Specifications:

- Black color
- L 2 1/4", W 1", H 3/4"
- 3A/6A



ETE-SW-DC12-24V

## IN-LINE DC 12V/24V LED ROTARY DIMMER SWITCH

### Specifications:

- Black color
- Use with constant voltage DC drivers
- 12V/24W Max - 24V/48W Max



ETE-RD-DC12-24V

## IN-LINE DC 12V/24V LED SENSOR DIMMER

### Specifications:

- Black color
- Use with constant voltage DC drivers
- 12V/24W Max - 24V/48W Max



ETE-SN-DC12-24V

## 3 STAGE TOUCH DIMMER

### Specifications

- DC 12V/24V
- 72W at 12V - 144W at 24V



LED-ITOUCH-DC

## INFRA RED TOUCH DIMMER

### Specifications

- DC 12V/24V
- 72W at 12V - 144W at 24V



LED-ITOUCH-IR-DC

**SKYLARK SERIES INCANDESCENT**

**Slide-to-Off Dimmers**

Single Pole 600W S-600-WH



**S-600-WH**

**Preset Dimmers with On/Off Switch**

Single Pole 600W S-600P-WH  
 Single Pole 1000W S-10P-WH  
 3-Way 600W S-603P-WH



**S-600P-WH**



**S-600PNL-WH**

**Preset Dimmers with Night Light**

Single Pole 600W S-600PNL-WH

**Dual Slide-to-Off Dimmers**

2 Single Pole 300W S2-L-WH



**S2-L-WH**

**LED / CFL Dimmer**

**Preset Dimmers with On/Off Switch**

Single Pole 600W SCL-153P-WH  
 3-Way



**SCL-153P-WH**

**Electronic Low Voltage**

**Preset Dimmers with On/Off Switch**

Single Pole 300W SELV-300P-WH  
 3-Way 300W SELV-303P-WH



**SELV-300P-WH**

**Magnetic Low Voltage**

**Preset Dimmers with On/Off Switch**

Single Pole 600VA (450W) SLV-600P-WH  
 3-Way 600VA (450W) SLV-603P-WH



**SLV-600P-WH**



**DIVA Series Incandescent**

**Slide-to-Off Dimmers**

Single Pole 600W DV-600P-WH

**Preset Dimmers with On/Off Switch & Night Light**

Single Pole 1000W DV-10P-WH  
3-Way 600W DV-603P-WH



**DV-600P-WH**

**Electronic Low Voltage**

**Preset Dimmers with On/Off Switch**

Single Pole 300W DVELV-300P-WH  
3-Way 300W DVELV-303P-WH



**DVELV-300P-WH**

**Magnetic Low Voltage**

**Preset Dimmers with On/Off Switch**

Single Pole 600VA (450W) DVLV-600P-WH  
Single Pole 1000VA (800W) DVLV-10P-WH  
3-Way 600VA (450W) DVLV-603P-WH



**DVLV-600P-WH**

**LED / CFL Dimmer**

**Preset Dimmers with On/Off Switch**

Single Pole 600W DVCL-153P-WH  
3-Way



**DVCL-153P-WH**

**Maestro Series Incandescent**

**Preset Smart Dimmers**

Single Pole/Multi Location 600W MA-600-WH  
Single Pole/Multi Location 1000W MA-1000-WH



**MA-600-WH**

**LED / CFL Dimmer**

**Preset Dimmers with On/Off Switch**

Single Pole 600W MACL-153P-WH  
3-Way



**MACL-153P-WH**

**Electronic Low Voltage**

**Preset Smart Dimmers**

Single Pole/Multi Location 600W MAELV-600-WH



**MAELV-600-WH**

**Magnetic Low Voltage**

**Preset Dimmers with On/Off Switch**

Preset Smart Dimmers  
Single Pole 600VA (450W) MALV-600-WH  
Single Pole 1000VA (800W) MALV-1000-WH



**MALV-600-WH**

**Phase Adaptative Dimmer**

**Preset Dimmers with On/Off Switch**

Preset Smart Dimmers  
Single Pole 600VA (450W) RRD-6NA  
Slave Accessory Dimmer 600VA (450W) MA-R-WH



**RRD-6NA-WH**



**MA-R-WH**

\*\*\*Wattage indicates maximum lamp load. \*\*\*Derating required if ganged.  
\*\*\*Maestro Dimmers are not for use with 3-way or 4-way switches.

**ACCESSORIES AND DECORA SREWLESS WALLPLATES**

**Switches**

Single Pole	15A	CA-1PS-WH
3-Way	15A	CA-3PS-WH
4-Way	15A	CA-4PS-WH



**CA-1PS-WH**

**Tamper Resistant Receptacles**

Duplex Receptacle	15A, 125V	CAR-15H-WH
GFCI Receptacle Self Testing	15A, 125V	CAR-15-GFST-WH



**CARS-15H-TR-WH**



**CAR-15-GFST-WH**

**Tamper Resistant USB**

Duplex Receptacle with USB	15A, 125V	CAR-15-UBTR-WH
-------------------------------	-----------	----------------



**CAR-15-UBTR-WH**

**Single Phone Jack**

6-conductor, RJ11	CA-PJH-WH	<b>Cable Television Jack</b>
-------------------	-----------	------------------------------



**CA-PJH-WH**



**CA-CJH-WH**

**Single Cable Jack**

F-style, 75-Ohm Coaxial Cable	CA-CJH-WH
-------------------------------	-----------

**WALL PLATES**

1 Gang through 6 gang screwless wall plate



**CW-1-WH**

\*Colors available upon request



Soraa's MR16 revolutionized the market for this compact lamp, a critical tool for accent lighting in restaurants, homes, and hospitality applications.

For the first time, an LED lamp achieved the single source, perfect color quality, and high CBCP of a halogen lamp.

The VIVID SERIES: Our full-spectrum series brings you both VP3 VIVID COLOR (CRI-95, R9-95) and VP3 NATURAL WHITE Technology, with market-leading CBCP.

The PREMIUM SERIES: Our highest CBCP series, which also features VP3 NATURAL WHITE technology.

#### **ALL SORAA LAMPS FEATURE**

##### **Specifications:**

- GaN on GaN™ technology for small, bright point sources
- POINT SOURCE OPTICS for uniform and high intensity beams
- VP3 technology for perfect and consistent rendering of colors and whites
- SORAA SNAP SYSTEM compatibility opens up infinite design possibilities
- Enclosed fixture compatibility allows operation in damp or outdoor locations
- Rated life of 35,000 hours



**SOR-00967**

---

#### **FEATURES AND BENEFITS OF SORAA'S GU10**

##### **Specifications:**

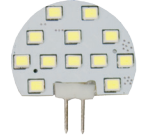
- Narrow spot CBCPs of 6000Cd at 95CRI and 7750Cd at 80CRI, not offered anywhere else in the market
- DIMMABLE, and tested with a wide range of dimmers
- Available in 120V and 230V configurations
- Standard GU10 form factor, IEC compliant
- Available in 2700K, 3000K, 4000K, 5000K, in beam angles of 10d, 25d, 36d and 60d



**SOR-02509**



WATTS	VOLTS	TYPE	FINISH	AVG.HRS	LUMENS	KELVIN
2.2W	12V	JC-G4	SMD	30000	200	3K,4K,5K



**LED-SMD-JCG4-3K**

WATTS	VOLTS	TYPE	BEAM	AVG.HRS	LUMENS	KELVIN
6W	120V	GU-10	40°	30000	550	3K,4K,5K



**LED-COB-GU-6W-3K**

WATTS	VOLTS	TYPE	BEAM	AVG.HRS	LUMENS	KELVIN
6W	12V	MR-16	40°	30000	550	3K,4K,5K



**LED-COB-MR-6W-3K**

WATTS	VOLTS	TYPE	BEAM	AVG.HRS	LUMENS	KELVIN
5W	120V	GU-10	40°	30000	400	3K,4K,5K



**E-GU-LED-5W-3K**

WATTS	VOLTS	TYPE	BEAM	AVG.HRS	LUMENS	KELVIN
5W	12V	MR-16	40°	30000	400	3K,4K,5K



**E-MR-LED-5W-3K**

WATTS	VOLTS	TYPE	BEAM	AVG.HRS	LUMENS	KELVIN
8W	120V	GU-10	40°	30000	550	3K,4K,5K



**E-GU-LED-8W-3K**

WATTS	VOLTS	TYPE	BEAM	AVG.HRS	LUMENS	KELVIN
8W	12V	MR-16	40°	30000	550	3K,4K,5K



**E-MR-LED-6W-3K**

WATTS	VOLTS	TYPE	BEAM	AVG.HRS	LUMENS	KELVIN
3	12V	MR-16	40°	30000	250	3000K



LED-SMD-JCG4-3K

WATTS	VOLTS	TYPE	BEAM	AVG.HRS	LUMENS	KELVIN
7	12V	MR-16	35°	30000	450	3000K



PHI-LEDMR-7W-WW

WATTS	VOLTS	TYPE	BEAM	AVG.HRS	LUMENS	KELVIN
1.25	12V	MR-16	30°	50000	120	2700K



E-MR-16-LED

WATTS	VOLTS	TYPE	BEAM	AVG.HRS	LUMENS	KELVIN
1.25	12V	GU-10	30°	50000	120	2700K



E-GU-LED

WATTS	VOLTS	TYPE	BEAM	AVG.HRS	LUMENS	KELVIN
4	12V	MR-16	30°	50000	330	RGB+3K



HAL-MR-RGB-W

WATTS	VOLTS	TYPE	BEAM	AVG.HRS	LUMENS	KELVIN
4	120V	GU-10	60°	50000	330	RGB+3K



HAL-GU-RGB-W



**GUCFL-7W**

Watts	Volts	Type	Color Temp	Avg.Hrs	Lumens
7W	120V	T-4	27K/41K/64K	15000	600



**GUCFL-11W**

Watts	Volts	Type	Color Temp	Avg.Hrs	Lumens
11W	120V	T-4	41K/64K	15000	800





**T-4**

Watts	Volts	Type	Color Temp	Avg.Hrs	Lumens	Length
6W	120V	T-4	3000K	10000	375	8 7/8
6W	120V	T-4	4100K	10000	375	8 7/8
6W	120V	T-4	6400K	10000	375	8 7/8
8W	120V	T-4	3000K	10000	450	13 1/8
8W	120V	T-4	4100K	10000	450	13 1/8
8W	120V	T-4	6400K	10000	450	13 1/8
12W	120V	T-4	3000K	10000	700	17 1/8
12W	120V	T-4	4100K	10000	700	17 1/8
12W	120V	T-4	6400K	10000	700	17 1/8
16W	120V	T-4	3000K	10000	1000	18 3/4
16W	120V	T-4	4100K	10000	1000	18 3/4
16W	120V	T-4	6400K	10000	1000	18 3/4
20W	120V	T-4	3000K	10000	1350	20 1/4
20W	120V	T-4	4100K	10000	1350	20 1/4
20W	120V	T-4	6400K	10000	1350	20 1/4
22W	120V	T-4	3000K	10000	1650	29
22W	120V	T-4	4100K	10000	1650	29
22W	120V	T-4	6400K	10000	1650	29
24W	120V	T-4	3000K	10000	2150	33 7/8
24W	120V	T-4	4100K	10000	2150	33 7/8
24W	120V	T-4	6400K	10000	2150	33 7/8
26W	120V	T-4	3000K	10000	2450	40
26W	120V	T-4	4100K	10000	2450	40
26W	120V	T-4	6400K	10000	2450	40
28W	120V	T-4	3000K	10000	2900	45 3/4
28W	120V	T-4	4100K	10000	2900	45 3/4
28W	120V	T-4	6400K	10000	2900	45 3/4

\*Also available in 30" (22W) and 42" (26W)



	Watts	Volts	Type	Color Temp	Avg. Hrs	Lumens	Length
 T-5	6W	120V	T-5	3000K	10000	290	8 7/8
	6W	120V	T-5	4100K	10000	290	8 7/8
	6W	120V	T-5	6400K	10000	290	8 7/8
	8W	120V	T-5	3000K	10000	470	11 7/8
	8W	120V	T-5	4100K	10000	470	11 7/8
	8W	120V	T-5	6400K	10000	470	11 7/8
	13W	120V	T-5	3000K	10000	700	20 7/8
	13W	120V	T-5	4100K	10000	700	20 7/8
	13W	120V	T-5	6400K	10000	700	20 7/8
	14W	120V	T-5	3000K	10000	1350	22 1/8
	14W	120V	T-5	4100K	10000	1350	22 1/8
	14W	120V	T-5	6400K	10000	1350	22 1/8
	21W	120V	T-5	3000K	10000	2100	33 7/8
	21W	120V	T-5	4100K	10000	2100	33 7/8
	21W	120V	T-5	6400K	10000	2100	33 7/8
	28W	120V	T-5	3000K	10000	2900	45 3/4
	28W	120V	T-5	4100K	10000	2900	45 3/4
	28W	120V	T-5	6400K	10000	2900	45 3/4
35W	120V	T-5	3000K	10000	3650	57 1/2	
35W	120V	T-5	4100K	10000	3650	57 1/2	
35W	120V	T-5	6400K	10000	3650	57 1/2	
 T-8	15W	120V	T-8	3000K	10000	840	17 3/4
	15W	120V	T-8	4100K	10000	840	17 3/4
	15W	120V	T-8	6400K	10000	840	17 3/4
	17W	120V	T-8	3000K	10000	1325	23 3/8
	17W	120V	T-8	4100K	10000	1325	23 3/8
	17W	120V	T-8	6400K	10000	1325	23 3/8
	25W	120V	T-8	3000K	10000	2050	35 3/8
	25W	120V	T-8	4100K	10000	2050	35 3/8
	25W	120V	T-8	6400K	10000	2050	35 3/8
	32W	120V	T-8	3000K	10000	2800	47 3/4
	32W	120V	T-8	4100K	10000	2800	47 3/4
	32W	120V	T-8	6400K	10000	2800	47 3/4

WATTS	VOLTS	TYPE	FINISH	AVG.HRS	LUMENS
10W	12V	JC	CLEAR	10000	140
20W	12V	JC	CLEAR	10000	330



**XE-JC-G4**

WATTS	VOLTS	TYPE	FINISH	AVG.HRS	LUMENS
20W	12V	MR	CLEAR	5000	300
35W	12V	MR	CLEAR	5000	450
50W	12V	MR	CLEAR	5000	600



**XE-MR-16**

WATTS	VOLTS	TYPE	FINISH	AVG.HRS	LUMENS
20W	12V	MR-16	CLEAR	5000	300
35W	12V	MR-16	CLEAR	5000	620
50W	12V	MR-16	CLEAR	5000	870



**OSR-IRC-MR-16**

WATTS	VOLTS	TYPE	FINISH	AVG.HRS	LUMENS
20W	120V	GU-10	CLEAR	2000	300
35W	120V	GU-10	CLEAR	2000	450
50W	120V	GU-10	CLEAR	2000	550



**E-GU-10**

WATTS	VOLTS	TYPE	FINISH	AVG.HRS	LUMENS
20W	120V	E17	CLEAR	2000	200
35W	120V	E17	CLEAR	2000	300
50W	120V	E17	CLEAR	2000	500



**E-JDR-E17**

WATTS	VOLTS	TYPE	FINISH	AVG.HRS	LUMENS
20W	120V	G8	CLEAR	2000	300



**XE-JC-G8**

**Incandescent:** common source of light, mostly referred to as “the light bulb”

**Halogen:** a tungsten filament incandescent lamp filled with halogen gas, with a lamp envelope made of quartz to withstand the high temperature. Increased lamp life and enhanced lumen output. This lamp contains a certain proportion of halogens, namely iodine, chlorine, bromine, and fluorine that slows down the evaporation of the tungsten. Also commonly referred to as the quartz lamp

**Xenon:** a colorless, odorless gas used in certain photographic flash lamps, in high-intensity arc lamps for motion picture production, and in high pressure arc lamps to produce ultraviolet light

**L.E.D. (Light Emitting Diode):** small semi-conductor devices that convert electrical energy into intense bright light. An alternative light source that is energy efficient, low maintenance, and emits relatively no heat

**Fluorescent:** a linear light source consisting of a tube filled with gas. When electrical current is applied, the resulting arc emits ultraviolet light that excites the phosphors on the inside of the lamp wall, causing them to radiate visible light

**Compact Fluorescent:** twin-tube fluorescent lamp used in some emergency lighting, down lighting, and fluorescent products. The lamp life is about 10 times that of incandescent lamps and uses less power. Also referred to as “PL”, “Twin-Tube”, or BIAx lamps.

**MR-16:** low-voltage quartz lamp, only 2” in diameter that directs a sharp, precise beam of light

**Watt (W):** the unit for measuring electrical power. It defines the energy consumed by an electrical device when it is in operation. The energy cost of operating an electrical device is determined by the watts it consumes multiplied by the hours of use. It is related to volts and amps by the formula: Volts x Amps = Watts

**Voltage:** the potential difference between two points of an electrical circuit

**Low-Voltage Lamp:** a lamp that provides both intensity and good color rendition. Lamps operates at 12V and requires the use of a transformer. Popular lamps are MR16 and PAR36

**Line-Voltage or 120V:** Regular household/business voltage in the U.S. directly powered by electrical panel

**Transformer:** a device designed to transfer energy from one circuit to another by electromagnetic induction. Transformers are typically used to increase (step up) or decrease (step down) the voltage from one circuit to another. The turns, ratio, or number of windings on the primary and secondary sides of the transformer will affect the amount of increase/decrease of voltage i.e. 120V to 12V

**Hardwire:** a term used to describe when all connectors/plugs are removed from electrical devices in order for them to be connected directly, wire to wire. Usually done by certified electricians only

**Plug-n-Play:** a term that describes a user-friendly and easy to use method of connecting electrical devices through the use of male/female connectors specifically designed for compatible units

**Lamp Efficacy:** a metric used to compare light output to energy consumption. The ratio of lumens per watt

**Lamp Life:** the number of burning hours at which 50% of any large group of installed lamps are still operational

**Illuminance/Lumens:** a photometric term which quantifies light striking a surface or plane at a point. It is expressed either in lumens per square foot, footcandles (the English metric) or lumens per square meter, lux (the metric unit). 1 footcandle = 10.76 lux

**Color Temperatures/Kelvin (K):** the measurement or characteristic of the white balance of a light source. Low temperature implies warmer or more yellow/red, moving up the scale to whiter and brighter tones. Measured using a standard unit of color temperature called the Kelvin (K)

**Beam:** the angles at which light emits from a device (bulb or lighting unit) when compared to the distance at which it is designed to illuminate. Measured in “degrees”

**ETL:** abbreviation for Electrical Testing Laboratories, an independent organization whose responsibilities include rigorous testing of electrical products. ETL has been particularly active in the testing of fluorescent ballasts and is affiliated with CMB (Certified Ballast Manufacturers). Comparable and as acceptable as UL Listing (see below)

**U.L.:** an independent organization whose responsibilities include rigorous testing of electrical products. When products pass these tests, they can be labeled (and advertised) as “UL listed”. UL tests for product safety only.



1. New Accounts – There is no minimum order amount to establish a new account with Eterna, however accounts will be deactivated after 6 months of inactivity. Immediate activation with an order requires a credit card purchase (all major cards accepted). A credit application is required to establish terms.
2. Terms / Credit – Methods of payment that are accepted are company check, Visa, MasterCard, Discover, American Express, or cash (local customers only). Our terms are 30days-net.
3. Minimum Invoice – We will be happy to place your order for any amount, however to avoid additional fees (see item #5a) our minimum order is \$100.00.
4. Freight / Shipping Policy – Warehouse Shipments:
  - a. We can ship your merchandise any way necessary. Our “free freight” policy is effective on orders as follows: \$1500 to So.FL; \$2000 to LA, MS, AL, GA, SC, No.FL; \$3000 to TX, NM, CO, NE, KS, OK, IA, MO, AR, IL, IN, OH, KY, TN, NC, VA, WV, PA, NY, DC; \$3800 to All Other Areas of the US and Canada.
5. Additional Fees –
  - a. Minimum Order Fee – a \$15.00 fee will be charged for your order that is less than \$100.00
  - b. COD Fee: Original COD orders carry a minimum \$10.00 COD fee. COD fees can be avoided by using accepted Credit Cards (see terms/credit).
  - c. NSF Fees – a \$40.00 fee will be charged, in addition to any bank or associated charges, for any check that comes back to us as un-payable.
6. Shipping – Eterna Lighting maintains a local (Miami FL) delivery fleet for local deliveries. Where appropriate Eterna will ship via UPS or other forms of transportation to deliver your order in a timely manner.
7. Local Pick-Up – During normal business hours we can allow limited pick-up at our warehouse location in Miami FL; pick-ups will be exempt from our normal Minimum Order Fee (see #5a).
8. Delivery Dates – Normally we can provide next-day delivery upon request, and if order is received before 12 noon. All shipping dates however are estimates and should not be deemed to represent a fixed or guaranteed timeframe for delivery.
9. Claims – Goods in transit travel at the risk of the purchaser. Damage and/or shortage must be noted upon receipt and be countersigned by the delivering carrier’s agent. We will not responsible for loss or damage in transit.
10. Credit Requests / Returned Goods – All goods come with a one year warranty. Returns of damaged or defective goods are accepted so long as all parts/items available are returned to our warehouse. You can request a RGA from our office; a full or applicable credit will be charged back to your account once the part/item(s) has been received, less a 25% restocking fee (excluding shipping charges).
11. Taxes – Applicable state and local taxes on merchandise will be charged
12. Samples – We would be happy to provide you with a sample(s) of our product(s). You will be charged the normal price of the item, plus shipping charges, with the stipulation that you have 30 days to return the item, in it’s original packaging, to us for a refund of your purchase price, less shipping fee. After 30 days there will be no refund available. Note: our minimum order fee will be waived on sample orders.
13. Ordering – Place your order by any of these convenient methods
  - a. Phone: 888.513.3346 or 305.513.3336
  - b. Fax: 305.513.3662 or 888.513.3662
  - c. Email: sales@eternalighting.com
14. Stock – Our policy is to maintain adequate stock of all products offered, however we cannot guarantee availability of any particular inventory at any given time.
15. Invoicing – Eterna Lighting can invoice you using standard procedures, summaries, by credit card, via email, US Mail or Fax.
16. Contacts –
  - a. Our Address: 5065 NW 74th Ave Bay 8, Miami FL 33166
  - b. Our Telephone contacts : 305.513.3336 or 888.513.3346 or fax 305.513.3662 or 888.513.3662









305 513 3336 • [eternalighting.com](http://eternalighting.com)