

UNDERCABINET LIGHTING



Juno[®]

Standard length fixtures
for linear lighting applications





chopping

toasting

cleaning



cooking

measuring

blending



typing

thinking

reading

Form and Function



Lighting where you need it; highlighting where you want it. Juno's undercabinet and shelf lighting products offer the perfect balance of form and function. Slim, small, sleek. Easy, efficient, economical. Optimal illumination for labors of life and works of art.

Juno undercabinet and shelf lighting provide versatile solutions for any budget and application.

Table of Contents

	Pro-Halogen The choice of professionals. Uses efficient 12-volt halogen lamps for precise white light and long life. Premium construction provides maximum installation flexibility and low mounting surface contact temperatures.	2-3
	Line Voltage Halogen Provides economical, attractive halogen lighting using 120-volt halogen lamps.	4
	Pro-Xenon Professional grade 12-volt xenon fixtures. Premium construction provides maximum installation flexibility with long-life xenon lamps.	5
	Economy Xenon Provides economical illumination using long-life 12-volt xenon lamps.	6
	Fluorescent Creates bright, uniform task lighting from an economical, Energy Star qualified, easy-to-conceal fixture. Offers maximum energy efficiency and lamp life.	 7
	Trac 12 With its miniature size and ability to be field cut to length, Trac 12 provides total flexibility in achieving dramatic lighting for undercabinet, overcabinet, in-cabinet, kick-space, and cove lighting.	8-9
	Application Guide	10-11
	Product Index	13



The Pro-Halogen modular series with integral electronic transformer operates 12-volt halogen lamps to deliver the best color rendering with maximum light output and lamp life. The efficient operation of low-voltage lamps, in combination with a unique housing/reflector system, reduces mounting surface temperatures to well below what is typical for halogen undercabinet fixtures. Pro-Halogen fixtures are optimized for fast, permanent installation, mounting either flush to the rear backsplash or to the front lip of cabinetry to suit project conditions and homeowner preference.

Cabinet Bottom Contact Temperatures

Typical Halogen Fixture
Between 70 – 90°C

Causes cabinetry discoloration/delaminating and drying out of perishables stored on shelf above



Pro-Halogen Fixture
Under 60°C

Safe for most cabinet laminates and minimizes thermal transfer to shelf above



Optional jumper cord accessory for turning corners or spanning cabinet frames.



Straight-joiner-supplied for plug-together row mounting of multiple fixtures.

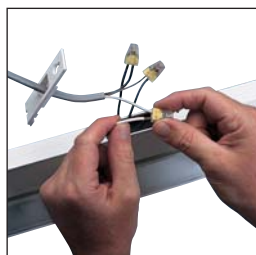


Hinged lens for simplified relamping without tools; Spring-loaded retention bar prevents lens from accidentally being bumped loose.

Pro-Halogen 5-minute Direct-Wire Installation



Step 1 Attach supply wires to rear access cover.



Step 2 Connect supply wires to fixture leads using push-in connectors.

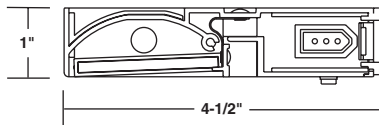


Step 3 Mount fixture to cabinet bottom using captive mounting screws.

Pro-Halogen Series

Features

- 12-volt halogen lamps for maximum efficiency, best color rendition, and long 6,000+ hour lamp life*
- Modular system for installation flexibility
- Integral reflector increases light output and helps reduce fixture housing temperature
- Slim 1" profile
- Premium prismatic clear glass lens for uniform light distribution, maximum light transmission, and wipe-down cleaning
- Lens is reverse-angled to minimize perceived brightness from normal viewing angles
- Dimmable using fixture-mounted high/low/off rocker switch or wall-mounted dimmers
- Rear-access cover and push-in electrical connectors for quick installation using non-metallic cable or 3/8" flexible metal conduit
- Extra off-center knockouts and feed thru wiring capability
- Captive external screws for quick mounting
- Designer finishes include black, brushed bronze, brushed silver and white to match interior decor



Fixtures

ULH109

9" 1-Lamp Pro-Halogen

Supplied with joiner connector, mounting hardware and (1) T3 12V 20W bi-pin halogen lamp. 9-1/2"L x 4-1/2"D x 1"H

Finish: BL-Black, BZ-Brushed Bronze, SL-Brushed Silver, WH-Designer White



ULH214

14" 2-Lamp Pro-Halogen

Supplied with joiner connector, mounting hardware and (2) T3 12V 20W bi-pin halogen lamps. 14"L x 4-1/2"D x 1"H

Finish: BL-Black, BZ-Brushed Bronze, SL-Brushed Silver, WH-Designer White



ULH322

22" 3-Lamp Pro-Halogen

Supplied with joiner connector, mounting hardware and (3) T3 12V 20W bi-pin halogen lamps. 22"L x 4-1/2"D x 1"H

Finish: BL-Black, BZ-Brushed Bronze, SL-Brushed Silver, WH-Designer White



ULH430

30" 4-Lamp Pro-Halogen

Supplied with joiner connector, mounting hardware and (4) T3 12V 20W bi-pin halogen lamps. 30"L x 4-1/2"D x 1"H

Finish: BL-Black, BZ-Brushed Bronze, SL-Brushed Silver, WH-Designer White



Accessories

JC3-8

JC3-17

JC3-26

8", 17" & 26"

Jumper Cords

3-wire Jumper Cord to electrically join fixtures when spaced apart, turning corners, or spanning cabinet frames.

Finish: BL-Black, WH-Designer White



ULH-CP

6' Cord and Plug

3-wire grounded cord and plug accessory for portable plug-in installation.

Finish: BL-Black, WH-Designer White



ULH-DWM

Direct Wire Module

Facilitates code-complaint installation of fixture at front edge of cabinet. Includes wiring enclosure and 36" field-shortenable jumper cord that plugs into the right or left side of the fixture. 3"L x 3"D x 1"H

Finish: BL-Black, WH-Designer White



ULH-CONN

3/8" Miniature Die-Cast Electrical Connector

Accessory for use when loop wiring with Romex or BX.



Finishes



Black



Brushed Bronze



Brushed Silver



Designer White

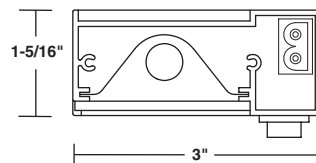
*projected life based on actual fixture operating voltage



Line-Voltage Halogen luminaires provide economical halogen lighting by utilizing 120-volt halogen lamps which do not require a transformer.

Features

- Economical design using 120-volt 25-watt halogen lamps with a somewhat warmer tone than low voltage halogen
- Modular design for simple plug-in portable installation and plug-together connection of multiple fixtures
- May be permanently wired using optional Direct Wire Module
- Narrow profile 3"D x 1-5/16"H
- Dimmable using fixture mounted high/low/off switch or wall-mounted dimmers
- 2,000 hour rated lamp life
- Designer White finish



Fixtures

UH106-WH 6" 1-Lamp

Line Voltage Halogen

Supplied with field-shortenable 6' cord and plug, joiner connector, (1) G8 120V 25W bi-pin halogen lamp, and mounting hardware.
6-1/8"L x 3"D x 1-5/16"H
(Add 2" to length for side entry of power cord.)
Finish: Designer White



UH212-WH 12" 2-Lamp

Line Voltage Halogen

Supplied with field-shortenable 6' cord and plug, joiner connector, (2) G8 120V 25W bi-pin halogen lamps, and mounting hardware.
12-1/8"L x 3"D x 1-5/16"H
(Add 2" to length for side entry of power cord.)
Finish: Designer White



UH318-WH 18" 3-Lamp

Line Voltage Halogen

Supplied with field-shortenable 6' cord and plug, joiner connector, (3) G8 120V 25W bi-pin halogen lamps, and mounting hardware.
17-3/4"L x 3"D x 1-5/16"H
(Add 2" to length for side entry of power cord.)
Finish: Designer White



Accessories

DWM1-WH

Direct Wire Module

Required for permanent wiring of Line Voltage Halogen fixtures. Includes wiring enclosure and 36" field-shortenable jumper cord to bring power to right or left side of the fixture
3"L x 3"D x 1"H
Finish: Designer White



JC2-8-WH

JC2-17-WH

JC2-26-WH

8", 17" & 26"

Jumper Cords

2-wire Jumper Cord to electrically join fixtures when spaced apart, turning corners, or spanning cabinet frames.
Finish: Designer White



T925

Replacement Lamp

G8 120V 25W
Bi-pin halogen lamp



Line Voltage Halogen Installation Options



Portable Installation



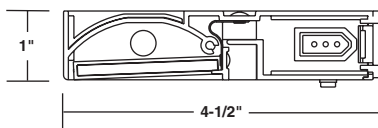
Direct Wire Installation



Joining Multiple Fixtures

Features

- 12-volt 20W bi-pin high-output xenon lamp with 10,000 hours life
- Modular system for installation flexibility
- Integral reflector increases light output and helps reduce fixture housing temperature
- Slim 1" profile
- Integral 12-volt electronic transformer
- Premium prismatic clear glass lens for uniform light distribution, maximum light transmission, and wipe-down cleaning
- Lens is reverse-angled to minimize perceived brightness from normal viewing angles
- Dimmable using fixture-mounted high/low/off rocker switch or wall-mounted dimmers
- Rear-access cover and push-in electrical connectors for quick installation using non-metallic cable or 3/8" flexible metal conduit
- Extra off-center knockouts and feed thru wiring capability
- Captive external screws for quick mounting
- Designer finishes include, brushed bronze, brushed silver and white to match



Fixtures

UPX109

9" 1-Lamp

Pro-Xenon

Supplied with joiner connector, mounting hardware and (1) 12V 20W bi-pin high output xenon lamp. 9-1/2"L x 4-1/2"D x 1"H

Finish: BZ-Brushed Bronze, SL-Brushed Silver, WH-Designer White



UPX214

14" 2-Lamp

Pro-Xenon

Supplied with joiner connector, mounting hardware and (2) 12V 20W bi-pin high output xenon lamps. 14"L x 4-1/2"D x 1"H

Finish: BZ-Brushed Bronze, SL-Brushed Silver, WH-Designer White



UPX322

22" 3-Lamp

Pro-Xenon

Supplied with joiner connector, mounting hardware and (3) 12V 20W bi-pin high output xenon lamps. 22"L x 4-1/2"D x 1"H

Finish: BZ-Brushed Bronze, SL-Brushed Silver, WH-Designer White



UPX430

30" 4-Lamp

Pro-Xenon

Supplied with joiner connector, mounting hardware and (4) 12V 20W bi-pin high output xenon lamps. 30"L x 4-1/2"D x 1"H

Finish: BZ-Brushed Bronze, SL-Brushed Silver, WH-Designer White



Accessories

JC3-8

JC3-17

JC3-26

8", 17" & 26"

Jumper Cords

3-wire Jumper Cord to electrically join fixtures when spaced apart, turning corners, or spanning cabinet frames.

Finish: BL-Black, WH-Designer White



ULH-CP

6' Cord and Plug

3-wire grounded cord and plug accessory for portable plug-in installation.

Finish: BL-Black, WH-Designer White



ULH-DWM

Direct Wire Module

Facilitates code-complaint installation of fixture at front edge of cabinet. Includes wiring enclosure and 36" field-shortenable jumper cord that plugs into the right or left side of the fixture.

Finish: BL-Black, WH-Designer White



ULH-CONN

3/8" Miniature Die-Cast Electrical Connector

Accessory for use when loop wiring with Romex or BX.



UPX-LAMP

12V 20W bi-pin, high-output xenon Replacement lamp.



Finishes



Brushed Bronze



Brushed Silver



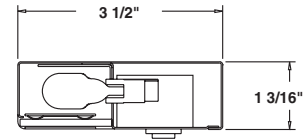
Designer White



Xenon luminaries with integral electronic 12-volt transformer offer an economical direct-wire sheet metal undercabinet alternative using long-life 12-volt xenon lamps.

Features

- Economical sheet metal design using 12-volt 18W xenon lamps
- Direct wire installation with multiple electrical knockouts in back and sides
- Compact profile 3-1/2"D x 1-3/16"H
- Dimmable using fixture-mounted high/low/off rocker switch or wall-mounted dimmers
- 10,000 hour rated lamp life
- Appliance White finish



Fixtures

ULX109-WH
9" Direct Wire
1-Lamp Xenon
 Supplied with 1-18W T5 wedge base xenon lamp, mounting hardware and 3/8" miniature die-cast electrical connector.
 9-1/2"L x 3-1/2"D x 1 3/16"H
Finish: Appliance White



ULX212-WH
12" Direct Wire
2-Lamp Xenon
 Supplied with 2-18W T5 wedge base xenon lamps, mounting hardware and 3/8" miniature die-cast electrical connector.
 12"L x 3-1/2"D x 1 3/16"H
Finish: Appliance White



ULX318-WH
18" Direct Wire
3-Lamp Xenon
 Supplied with 3-18W T5 wedge base xenon lamps, mounting hardware and 3/8" miniature die-cast electrical connector.
 18"L x 3-1/2"D x 1 3/16"H
Finish: Appliance White



ULX424-WH
24" Direct Wire
4-Lamp Xenon
 Supplied with 4-18W T5 wedge base xenon lamps, mounting hardware and 3/8" miniature die-cast electrical connector.
 24"L x 3-1/2"D x 1 3/16"H
Finish: Appliance White



Accessories

ULH-CP
6' Cord and Plug
 3-wire grounded cord and plug accessory for portable plug-in installation.
Finish: WH-Designer White, BL-Black



ULH-CONN
3/8" Miniature Die-Cast Electrical Connector
 Accessory for use when loop wiring with Romex or BX.

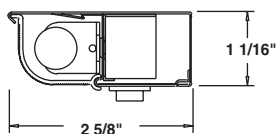


Fluorescent

Direct Wire Fluorescent luminaires offer highly efficient illumination in a shallow, easy-to-conceal profile. Ideal for undercabinet, undershelf, and task lighting, where maximum energy efficiency, long lamp life, and cool operation are desired.

Features

- Energy Star qualified, cool operating fluorescent lighting
- State-of-the-art electronic ballast operates without flicker or hum and instantly starts lamps
- Latest generation of high-efficiency, high color rendering 3000K T5 tri-phosphor fluorescent lamps
- 10,000-hour rated lamp life
- Cool-to-touch operation
- Shallow profile 2 5/8" D x 1-1/16" H
- High-quality acrylic diffuser stays pliable and clear
- Direct wire installation with multiple electrical knockouts in back and sides
- Maximum energy efficiency:
8 watts = 40 watts halogen
14 watts = 75 watts halogen
21 watts = 100 watts halogen
28 watts = 150 watts halogen



Fixtures

UFL12
12" 8W T5 Direct Wire Fluorescent
Supplied with 8W T5 3000K tri-phosphor lamp, mounting hardware and 3/8" miniature die-cast electrical connector.
12-7/16"L x 2 5/8"D x 1-1/16"H
Finish: WH-Appliance White, SL-Silver



UFL22
22" 14W T5 Direct Wire Fluorescent
Supplied with 14W T5 HE 3000K tri-phosphor lamp, mounting hardware and 3/8" miniature die-cast electrical connector.
22-3/4"L x 2 5/8"D x 1-1/16"H
Finish: WH-Appliance White, SL-Silver



UFL34
34" 21W T5 Direct Wire Fluorescent
Supplied with 21W T5 HE 3000K tri-phosphor lamp, mounting hardware and 3/8" miniature die-cast electrical connector.
34-1/2"L x 2 5/8"D x 1-1/16"H
Finish: WH-Appliance White, SL-Silver



UFL46
46" 28W T5 Direct Wire Fluorescent
Supplied with 28W T5 HE 3000K tri-phosphor lamp, mounting hardware and 3/8" miniature die-cast electrical connector.
46-5/16"L x 2 5/8"D x 1-1/16"H
Finish: WH-Appliance White, SL-Silver



Accessories

ULH-CP
6' Cord and Plug
3-wire grounded cord and plug accessory for portable plug-in installation.
Finish: WH-Designer White, BL-Black



ULH-CONN
3/8" Miniature Die-Cast Electrical Connector
Accessory for use when loop wiring with Romex or BX.



Finishes



Silver



Appliance White



With its small size and ability to configure on the job site, Trac 12 offers a unique capability to create a multitude of custom lighting effects. Miniature xenon lampholders can be spaced as required for undercabinet task lighting, undershelf accent lighting, toe-kick lighting, internally illuminating glass-front cabinets, and indirect lighting over cabinetry and in architectural coves. Trac 12 installations are powered from a remotely located 12 or 24-volt transformer.

Features

- Easy-to-conceal, ultra-miniature profile
- 10,000+ hour xenon lamps approximate the color of halogen lighting
- Dimmable
- Multitude of effects attainable with xenon lamps from 3-10 watts and variable lamp-holder spacing from 2" – 12"
- Low-profile halogen flood and spotlight available for more focused accent lighting



Trac Section

Trac

Each trac section contains two solid copper 12 AWG conductors and is supplied with an endfeed connector, dead end, and mounting hardware.



Height: 3/8"

TL2

2' Trac Section, 20-5/8". WH-White, BL-Black

TL4

4' Trac Section, 44-5/8". WH-White, BL-Black

TL6

6' Trac Section, 68-5/8". WH-White, BL-Black

TL8

8' Trac Section, 92-5/8". WH-White, BL-Black

Electrical Feeds & Joiners

TL34

Conduit Feed

For surface wiring or top feed using 1/2" electrical connectors.

WH-White, BL-Black



TL24

Right Angle Joiner

Joins two trac sections to form a 90° corner.

WH-White, BL-Black



TL20

Adjustable Joiner

Electrically joins two trac sections at variable angles.

WH-White, BL-Black



TL38

Endfeed Connector/ Dead End

For use with field cut-off trac sections.

WH-White, BL-Black



Lamp Holders

TL201 (Single Lamp)

TL202 (Double Lamp)

Xenon Lampholder

With polished aluminum reflector.

WH-White, BL-Black



Height: 5/8"

Lamps T3-1/4"

(Wedge Base)

TL900 3W 12V

TL901 5W 12V

TL903 10W 12V

TL905-24V 5W 24V*

TL910-24V 10W 24V*

*Frosted



Height: 5/8"

TL211

Rigid Loop

Xenon Lampholder

WH-White, BL-Black



Height: 1"

Lamps

(Xenon T3 Rigid Loop)

TL950CL 5W 12V

TL951CL 10W 12V

TL952CL 5W 24V

TL953CL 10W 24V

(CL-Clear, FR-Frosted)

TL950FR 5W 12V

TL951FR 10W 12V

TL952FR-24V 5W 24V

TL953FR-24V 10W 24V

TL103

Halogen Flood

WH-White, BL-Black



Height: 1-1/4"

Lamp

(T3 Halogen Bi-Pin Capsule)

TL922 10W 12V

TL923 20W 12V

TL924-24V 20W 24V

Transformers

Remote Magnetic Transformers

Resettable circuit breaker and dual tap primary to adjust for voltage drop. Vertical mount only.



12-Volt Transformers

TL554 (1) 150VA circuit for 50 to 150 watts. Dimensions: 8"H x 3-5/8"W x 3-1/2"D.

BL-Black

TL549 (1) 240VA circuit for 120 to 240 watts. Dimensions: 7-7/8"H x 4-3/8"W x 4"D.

BL-Black

TL550 (2) 240VA circuits, each for 120 to 240 watts. Dimensions: 11-13/8"H x 5"W x 4-3/4"D.

BL-Black

24-Volt Transformers

TL553-24V (1) 250VA circuit for 100 to 250 watts.

Dimensions: 8"H x 4-1/4"W x 4"D.

BL-Black

TL551-24V (1) 480VA circuit for 240 to 480 watts.

Dimensions: 11-3/8"H x 5"W x 4-7/8"D.

BL-Black

TL552-24V (2) 480VA circuits, each for 240 to 480 watts.

Dimensions: 12-1/2"H x 6-1/8"W x 5-7/8"D.

BL-Black

TL547

150VA Surface Transformer

Low-profile electronic 12-volt transformer with on/off switch for trac runs between 50 and 150 watts.

Can be installed in-line with trac or remote up to 5' from trac. 120V supply can be fed into end or top using standard 1/2" electrical connectors.

Dimensions: 1-5/8"H x 2-1/2"W x 7"L.

WH-White, BL-Black



TL548

60VA Plug-In Transformer

Economy plug-in 12-volt transformer for trac runs up to 60 watts. Supplied with 10' of 2-wire cord and on/off line cord switch. Dimensions: 3-1/8"H x 1-1/2"W x 1-3/8"L.

WH-White, BL-Black



Task Lighting

Juno undercabinet luminaires place bright lighting onto the work surface from a source that is located in close proximity to the task being performed. This placement is optimal, as general lighting is often blocked by a body shadow or a shadow from upper cabinets. In addition, undercabinet lighting provides the increased light levels required to accurately, quickly, and safely perform tasks.

Recommended Illuminance Levels 20–50 footcandles is generally perceived as adequate to perform kitchen undercabinet tasks such as food preparation or paying bills. More detailed tasks such as sewing or craftwork require 50–100 footcandles. Tasks that are very small, have intricate detail, or involve very dark surfaces may require even higher illumination levels.

Accent Lighting

Cabinets and shelves create dark cavities that can detract from the aesthetics of a room. Juno undercabinet fixtures illuminate these cavities, to create visual interest and a sense of spaciousness, and/or to highlight objects of interest.

Recommended Illuminance Levels Accent lighting usually requires 20 footcandles or less.

Cove Lighting

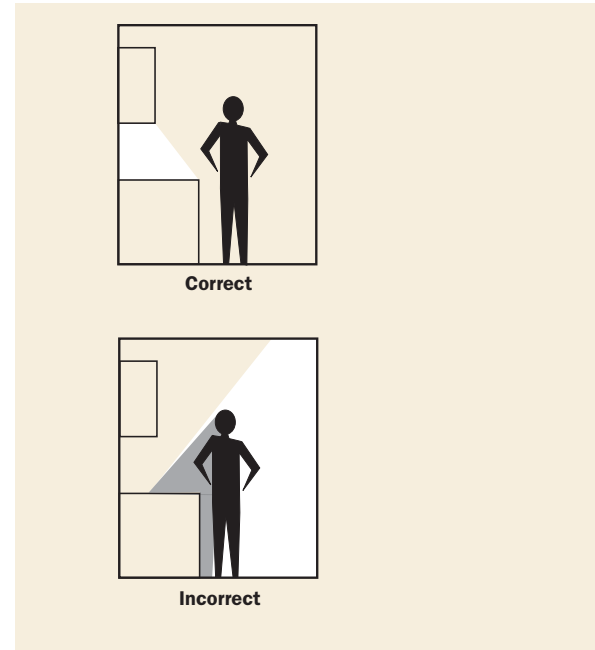
Indirectly lighting over cabinets or in architectural coves can increase the sense of spaciousness and add drama and pleasing warmth to an interior.

Recommended Illuminance Levels Cove lighting usually requires 20 footcandles or less.

Special Design Considerations

Dark Interior Finishes The amount of perceived light from undercabinet, accent, and cove lighting will vary greatly depending on the reflectance value of surrounding surfaces. A dark countertop and backsplash will absorb light from undercabinet fixtures and diminish the appearance of the counter being illuminated. Likewise, indirectly illuminating a dark wood paneled ceiling from an architectural cove will be much less dramatic than illuminating a white ceiling. Allowing for increased levels of illumination can partially offset light absorption of dark surfaces.

High Ambient Light Levels The apparent brightness of a lighted countertop, cabinet interior, or cove will also vary depending on the amount of general room illumination. If the general ambient lighting is 30 footcandles, than a cabinet interior illuminated to only 20 footcandles will not appear illuminated. Conversely, in a darkened room, 20 footcandles will appear brilliant. A minimum 3:1 ratio between the focus area and background is recommended to have visual impact.



Age As age increases, so does our need for light. A typical 65-year-old needs 10 to 15 times more light than a teenager to experience equal visual acuity.

Shiny Work Surfaces For high-gloss countertops and backsplashes, place the fixture at the front edge of the cabinet to minimize glare reflecting back into the eyes of someone working at the counter. Keep in mind that shiny dark surfaces act like a mirror, and will reflect any source of light that is placed above them. How the reflected image of one fixture appears vs. another is subjective.

Selecting the Best Type of Lamp for Your Application

Fluorescent The diffuse quality of fluorescent lamps, as used in the Fluorescent series, make them ideal for providing shadow-free task illumination in kitchens, home offices, and other work areas. Long life, very low energy consumption, and cool operating temperatures are important considerations for applications with long burning hours. The Fluorescent series uses the latest generation of high efficiency, high color rendering T5 lamps which approximates the color of halogen and has a 10,000 hour rated life. These fixtures have earned the Energy Star certification.

Halogen and Xenon The specular “point-source” nature of both halogen and xenon lamps creates sparkle and highlights texture, color, and 3-dimensional definition of displayed objects. These lamps are excellent choices for task and accent lighting. In addition, they may be dimmed to create a warmer appearance and/or lower-level mood or night lighting.

■ 12-volt halogen lamps, as used in the Pro-Halogen series, produce the whitest and brightest illumination with best color rendering using less energy and producing less heat.

■ 120-volt halogen lamps, as used in the Line Voltage Halogen series, produce a warmer tone than low voltage halogen, and offer lower initial fixtures cost, as they do not require a step-down transformer to operate.

■ 12-volt xenon lamps, as used in both Xenon series, produce a slightly warmer light than low voltage halogen. They also have a long 10,000-hour lamp life.

■ 12- or 24-volt xenon lamps, as used in Trac 12, have a slightly warmer color temperature than halogen, and offer the most flexibility to achieve custom lighting effects such as undershelf, internal cabinet, and indirect cove lighting. Like fluorescents, they also have a long 10,000-hour life when operated at the recommended 11.5 volts.

Undercabinet Lighting Application Guide

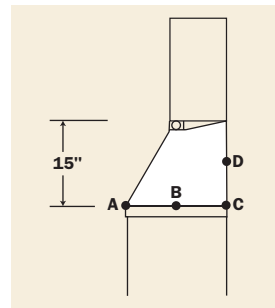
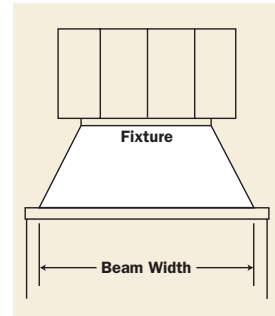
Footcandles on Horizontal Work Surface

Fixture	Cat #	Lamp	Beam Width*	Footcandles***			
				A	B	C	D
Pro-Halogen	ULH109	(1) 20-watt Halogen	19"	10	30	31	36
	ULH214	(2) 20-watt Halogen	24"	19	63	62	60
	ULH322	(3) 20-watt Halogen	32"	31	84	79	69
	ULH430	(4) 20-watt Halogen	36"	23	74	69	67
Line Volt Halogen	UH106	(1) 25-watt Halogen	12"	8	33	19	18
	UH212	(2) 25-watt Halogen	22"	12	60	35	35
	UH318	(3) 25-watt Halogen	28"	19	93	51	48
Pro-Xenon	UPX109	(1) 20-watt High-Output Xenon	21"	9	31	28	35
	UPX214	(2) 20-watt High-Output Xenon	23"	15	53	48	54
	UPX322	(3) 20-watt High-Output Xenon	31"	24	72	65	62
	UPX430	(4) 20-watt High-Output Xenon	36"	23	75	69	64
Economy Xenon	ULX109	(1) 18-watt Xenon	21"	14	25	20	25
	ULX212	(2) 18-watt Xenon	24"	30	52	42	49
	ULX318	(3) 18-watt Xenon	28"	40	72	55	59
	ULX424	(4) 18-watt Xenon	32"	44	75	64	61
Fluorescent	UFL12	8-watt Fluorescent	24"	32	77	68	93
	UFL22	14-watt Fluorescent	31"	64	135	130	157
	UFL34	21-watt Fluorescent	41"	66	140	131	140
	UFL46	28-watt Fluorescent	50"	83	171	166	170
Trac 12	TL201	5-watt Xenon, 3" On Center	**	10	31	20	22
	TL202	10-watt Xenon, 12" On Center	**	12	36	23	25
	TL211	10-watt Xenon, Rigid Loop, 6" On Center	**	14	43	28	30
	TL103	20-watt Halogen, 12" On Center	**	16	66	56	60

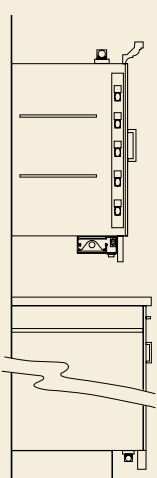
* Beam width defined as 50% of maximum footcandles.

** Assumes continuous lighting, so beam width is same as counter width. Rear wall reflectance 50%. Counter surface reflectance 20%.

*** Except for Trac 12, all data is for a single fixture.



Cabinetry Lighting Guidelines



Over Cabinets Trac 12, using 10-watt lamps spaced 6" on center, generally provides excellent indirect lighting. For lower-level mood lighting, use 3- or 5-watt lamps with slightly closer spacing. Juno Fluorescent fixtures may also be used where energy efficiency is a primary consideration, or higher light levels are required. Placing the fixture at the front edge of the cabinet top will project light into the space and illuminate any displayed objects.

Inside Cabinets Running Trac 12 vertical on the front inside of cabinets avoids the need to put trac on each shelf. 3-watt xenon lamps 3" on center will generally provide adequate lighting inside a cabinet.

Under Cabinets Placing Juno undercabinet fixtures at the front lip of the cabinet conceals the fixture from view, minimizes veiling reflections, and provides maximum light on the working area of the countertop.

Kick Spaces 3-watt xenon lamps spaced on 4" centers provide adequate kick-space lighting. Wider spacings can be used when the distance from trac to floor is greater than 4" or when even illumination is not required.

Note: Shiny flooring may cause objectionable lamp image reflections.



INDEX

Catalog Number Page

Pro-Halogen Series

ULH109-BL,-BZ,-SL,-WH 2-3
ULH214-BL,-BZ,-SL,-WH 2-3
ULH322-BL,-BZ,-SL,-WH 2-3
ULH430-BL,-BZ,-SL,-WH 2-3

Line Voltage Halogen

UH106-WH 4
UH212-WH 4
UH318-WH 4

Pro-Xenon Series

UPX109-WH, SL, BZ 5
UPX214-WH, SL, BZ 5
UPX322-WH, SL, BZ 5
UPX430-WH, SL, BZ 5

Economy Xenon

ULX109-WH 6
ULX212-WH 6
ULX318-WH 6
ULX424-WH 6

Direct Wire Fluorescent

UFL12-WH,-SL 7
UFL22-WH,-SL 7
UFL34-WH,-SL 7
UFL46-WH,-SL 7

Accessories

DWM1-WH 4
JC2-8/17/26-WH 4
JC3-8/17/26-WH,-BL 3,5
T925 6
ULH-CP-WH,-BL 3,5,6,7
ULH-DWM-WH,-BL 3,5
ULH-CONN 3,5,6,7

Catalog Number Page

Trac 12

Trac Section

TL2 9
TL4 9
TL6 9
TL8 9

Electrical Feeds & Joiners

TL20 9
TL24 9
TL34 9
TL38 9

Lampholders & Lamps

TL103 9
TL201 9
TL202 9
TL211 9
TL900 9
TL901 9
TL903 9
TL905-24V 9
TL910-24V 9
TL922 9
TL923 9
TL924-24V 9
TL950 9
TL951 9
TL952 9
TL953 9
UPX-LAMP 5

Transformers

TL547 9
TL548 9
TL549 9
TL550 9
TL551-24V 9
TL552-24V 9
TL553-24V 9
TL554 9



juno[®]
Recessed and Trac Lighting

indy[™]
Architectural Recessed Lighting

Alfa
Decorative Lighting Systems

AccuLite[™]
Commercial and Industrial Lighting

Elate[™]
Commercial Recessed Lighting

ModuLight[®]
Innovative Fluorescent Lighting System

AcuLux[™]
Precision Recessed Lighting

Navilite[®]
Exit and Emergency Lighting

DanaLite
Architectural Linear Lighting

1300 South Wolf Road • P.O. Box 5065 • Des Plaines, Illinois 60017-5065
PHONE (847) 827-9880 • FAX (847) 827-2925 • junolightinggroup.com

Regional Offices & Warehouses:
Atlanta, Dallas, Los Angeles, Philadelphia, Toronto



CREDITS
All Product Photography: Peter Bosy.
Application Photography: Barbara Karant;
Ira Montgomery; Dan Forer;
Insignia Kitchen and Bath,
Barrington, Illinois; Carr-Cialdella

Juno is a registered trademark of Juno Lighting, Inc.
Products shown in this brochure are covered by U.S. and
international patents and patents pending.
Specifications subject to change without notice.
© 2005 JUNO LIGHTING INC.

Printed in the U.S.A. LIT-UC 8/06 Rev. 1