

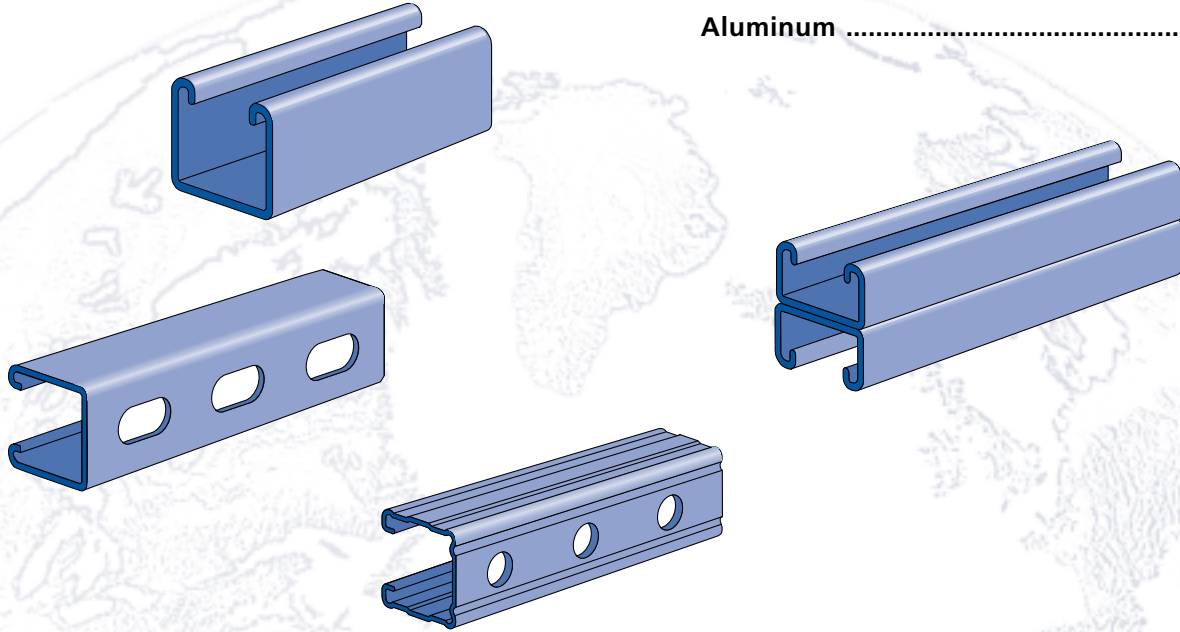


**UNISTRUT®**

# SPECIAL METALS

**Stainless Steel ..... 263**

**Aluminum ..... 266**



## MATERIAL

### Stainless Steel

Channels: ASTM A 240 (Type 304)

Sintered nuts: ASTM B783 (Type 316N2-33)

Fittings:

ASTM A240 (Type 304) or ASTM A276 (Type 304)

Type 316 stainless also available for most products.  
Contact factory for specific material availability.

### Aluminum

Channels (Extruded): ASTM B221 (Type 6063-T6)

Fittings: ASTM B209 (Type 1100F or Type 5052-H32)

Nuts: ASTM B221 (Type 6063-T5)

## LOAD DATA (BEAM & COLUMN)

To determine maximum allowable beam and column loading for channels in this section, multiply the load data in the appropriate mild steel channel sections of this catalog by the following factors:

CHANNEL MATERIAL	BEAM LOAD % FACTOR	COLUMN LOAD % FACTOR
EXTRUDED ALUMINUM	33.0%	33.0%
STAINLESS STEEL	100.0%	100.0%

## LOAD DATA (SLIP & PULL OUT)

### Extruded Aluminum

To determine nut slip resistance, multiply load data for appropriate nut by 75%. To determine nut pull-out load, multiply load data for appropriate nut by 50%.

### Stainless Steel

For design assistance, consult Unistrut customer engineering.

## PRODUCT AVAILABILITY

Most fittings and channels shown in this catalog, are available in aluminum or stainless steel. Consult factory for ordering information.

## DIMENSIONS

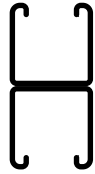
Imperial dimensions are illustrated in inches. Metric dimensions are shown in parenthesis or as noted. Unless noted, all metric dimensions are in millimeters and rounded to one decimal place.



**P1000 Series (12 gauge)**



P1000 SS  
Pg 263

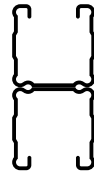


P1001 SS  
Pg 263

**P1100 Series (14 gauge)**



P1100 SS  
Pg 263



P1101 SS  
Pg 263

**P3000 Series (12 gauge)**



P3000 SS  
Pg 263

**P3300 Series (12 gauge)**



P3300 SS  
Pg 263



P3301 SS  
Pg 263

**P4000 Series (16 gauge)**



P4000 SS  
Pg 264

**P6000 Series (19 gauge)**



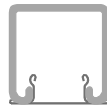
P6000 SS  
Pg 264

**P7000 Series (19 gauge)**



P7000 SS  
Pg 264

**Closure Strips and End Caps**



P1184 SS  
Pg 264



P3184 EA  
Pg 268



P1280 EA, P4280 EA,  
P5580 EA Pg 268

**Stainless Steel Channel Nuts**



P1006 U - P1010U  
Pg 265



P4006 U - P4010U  
Pg 265



P5506 U - P5510U  
Pg 265



P4010 UT  
Pg 265



A1006 SS, A1008 SS  
Pg 265



A4006 SS, A4008 SS  
Pg 265

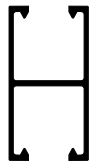


A5506 SS, A5508 SS  
Pg 265

**Extruded Aluminum Channels**



P1000 EA  
Pg 266



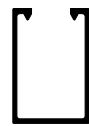
P1001 EA  
Pg 266



P4000 EA  
Pg 266



P4001 EA  
Pg 266



P5500 EA  
Pg 266



A1000 EA  
Pg 267



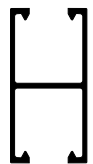
A4000 EA  
Pg 267



A4001 EA  
Pg 267



P6000 EA  
Pg 267



P6001 EA  
Pg 267



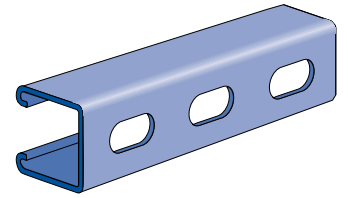
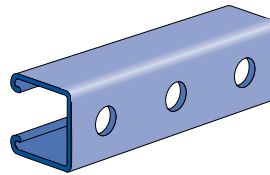
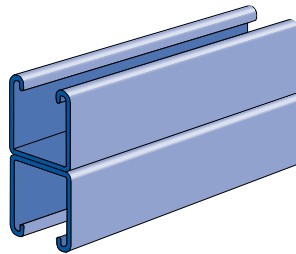
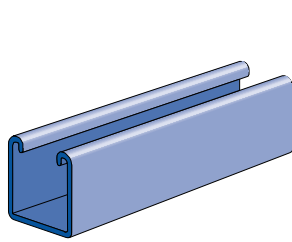
P7000 EA  
Pg 268



P7001 EA  
Pg 268

1 5/8" Channel  
 Telestrut System  
 Nuts & Hardware  
 General Fittings  
 Pipe/Conduit Supports  
 Electrical Fittings  
 Concrete Inserts  
 1 1/4" Framing System  
 1 3/16" Framing System  
 Fiberglass System  
 Special Metals  
 PrimeAngle System  
 Product Index

**P1000 Series**



**P1000 SS**

Wt/100 Ft: 190 Lbs  
(283 kg/100m)

**P1001 SS**

Wt/100 Ft: 380 Lbs  
(566 kg/100m)

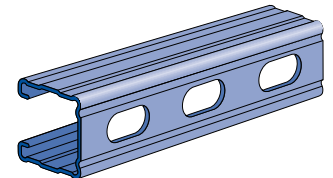
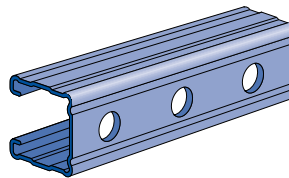
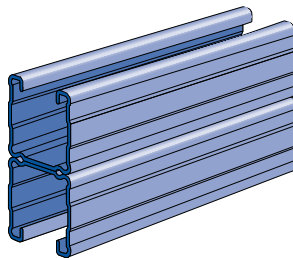
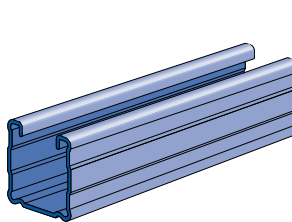
**P1000HS SS**

Wt/100 Ft: 185 Lbs  
(275 kg/100m)

**P1000T SS**

Wt/100 Ft: 185 Lbs  
(275 kg/100m)

**P1100 Series**



**P1100 SS**

Wt/100 Ft :142 Lbs  
(211 kg/100m)

**P1101 SS**

Wt/100 Ft : 284 Lbs  
(422 kg/100m)

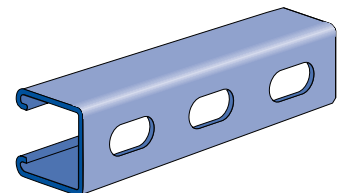
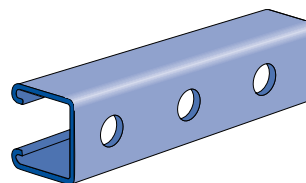
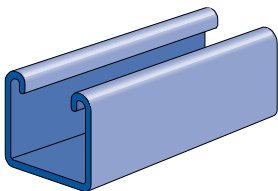
**P1100HS SS**

Wt/100 Ft : 136 Lbs  
(202 kg/100m)

**P1100T SS**

Wt/100 Ft: 136 Lbs  
(202 kg/100m)

**P3000 Series**



**P3000 SS**

Wt/100 Ft: 170 Lbs  
(253 kg/100m)

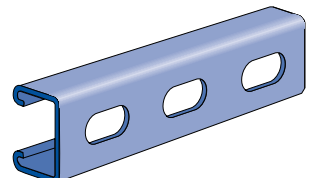
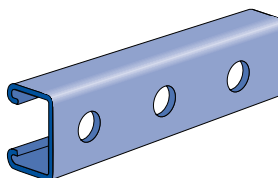
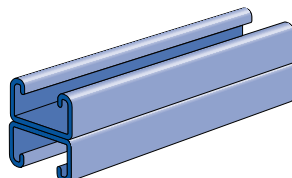
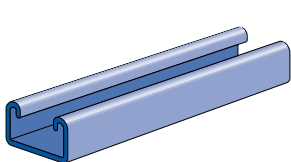
**P3000HS SS**

Wt/100 Ft: 165 Lbs  
(112 kg/100m)

**P3000T SS**

Wt/100 Ft: 165 Lbs  
(112 kg/100m)

**P3300 Series**



**P3300 SS**

Wt/100 Ft: 135 Lbs  
(201 kg/100m)

**P3301 SS**

Wt/100 Ft: 270 Lbs  
(402 kg/100m)

**P3300HS SS**

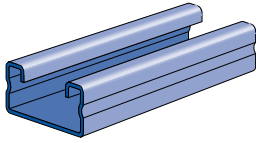
Wt/100 Ft: 130 Lbs  
(193 kg/100m)

**P3300T SS**

Wt/100 Ft: 130 Lbs  
(193 kg/100m)

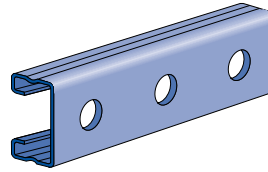


**P4000 Series**



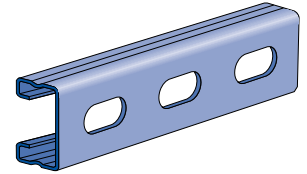
**P4000 SS**

Wt/100 Ft: 82 Lbs (122 kg/100m)



**P4000HS SS**

Wt/100 Ft: 79 Lbs (110 kg/100m)



**P4000T SS**

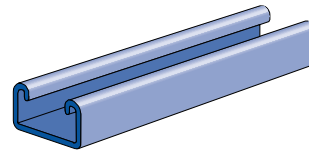
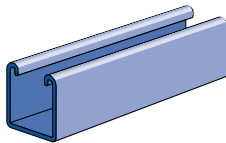
Wt/100 Ft: 79 Lbs (110 kg/100m)

**P6000 SS**

Wt/100 Ft: 37 Lbs (55 kg/100m)

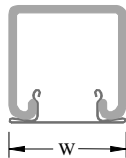
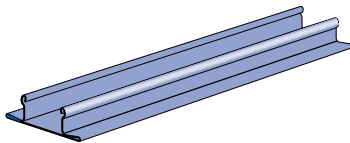
**P7000 SS**

Wt/100 Ft: 36 Lbs (54 kg/100m)



**P1184 SS, P6184 SS**

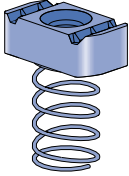
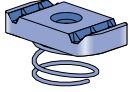
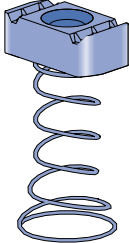
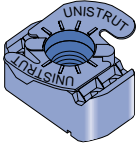
**Closure Strip**

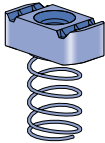
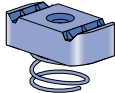
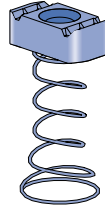


Part Number	Use With Channel	"W" In (mm)	Wt/100 Ft Lbs (kg/m)
P1184 SS	P1000		
	P1100	1 5/8	27
	P3300	41.3	40.2
	P4000		
P6184 SS	P6000	1 3/16	10
	P7000	20.6	14.9

Standard length 10 Ft.  
Material: Stainless steel type 304.

1 5/8" Channel  
 Telestrut System  
 Nuts & Hardware  
 General Fittings  
 Pipe/Conduit Supports  
 Electrical Fittings  
 Concrete Inserts  
 1 1/4" Framing System  
 1 3/16" Framing System  
 Fiberglass System  
 Special Metals  
 PrimeAngle System  
 Product Index

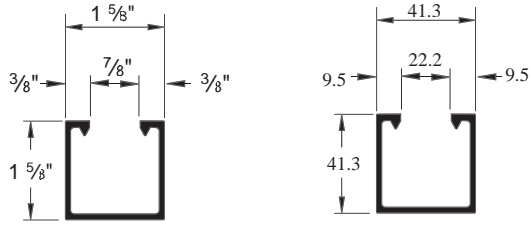
	Channel nut Part number	Nut Size -Thread	Wt/100 pcs Lbs (kg)	For Use With 1 5/8" Channel		
				P1000, P1100, P2000, P3000	P3300, P4000 P4100	P5500
	P1006U-1420	1/4" -20	7 3.2	■	-	-
	P1008U	3/8" -16	10 4.5	■	-	-
	P1010U	1/2" -13	12 5.4	■	-	-
	Material: Sintered type 316 stainless steel with pre-galvanized spring.					
	P4006U-1420	1/4" -20	7 3.2	-	■	-
	P4008U	3/8" -16	9 4.1	-	■	-
	P4010U	1/2" -13	9 4.1	-	■	-
	Material: Sintered type 316 stainless steel with pre-galvanized spring.					
	P5506U-1420	1/4" -20	7 3.2	-	-	■
	P5508U	3/8" -16	10 4.5	-	-	■
	P5510U	1/2" -13	10 4.5	-	-	■
	Material: Sintered type 316 stainless steel with pre-galvanized spring.					
	P4006-1420T SS	1/4" -20	7 3.2	■	-	■
	P4008UT	1/2" -13	12 5.4	■	-	■
	P4010UT	1/2" -13	8 3.6	-	■	-

	Channel nut Part number	Nut Size -Thread	Wt/100 pcs Lbs (kg)	For Use With Channel		
				A1000	P3300, P4000 A4100	A5000
	A1006-1420 SS	1/4" -20	6 2.7	■	-	-
	A1008 SS	3/8" -16	6 2.7	■	-	-
	Material: Sintered type 304 stainless steel with pre-galvanized spring.					
	A4006-1420 SS	1/4" -20	5 2.3	-	■	-
	A4008 SS	3/8" -16	5 2.3	-	■	-
	Material: Sintered type 304 stainless steel with pre-galvanized spring.					
	A5506-1420 SS	1/4" -20	6 2.7	-	-	■
	A5508 SS	3/8" -16	6 2.7	-	-	■
	Material: Wrought type 304 stainless steel with pre-galvanized spring.					

**Note**  
 Most fittings, as shown in this catalog are available in stainless steel or aluminum. It is recommended that stainless steel channel nuts be used with aluminum channels.

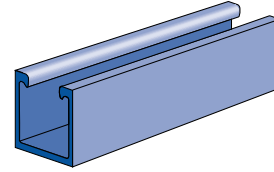


**P1000 EA**

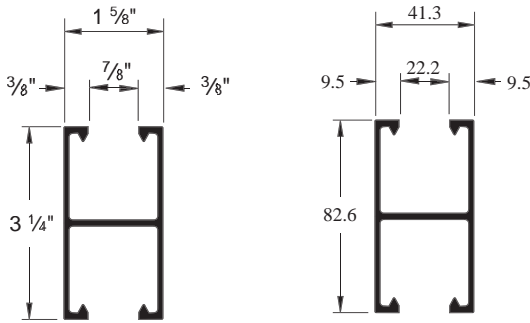


When used with P3184 EA.

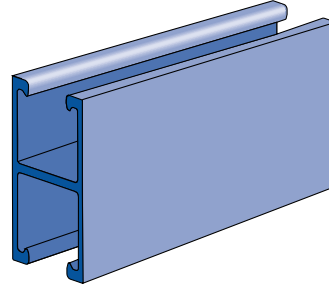
Wt/100 Ft: 76 Lbs (113 kg/100 m)  
Aluminum Type 6063-T6  
Nominal Thickness .109" (2.8mm)



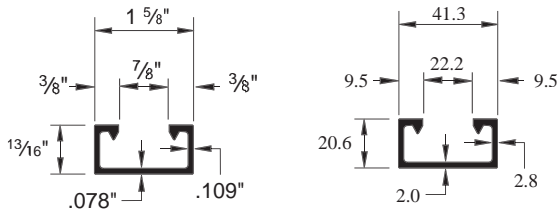
**P1001 EA**



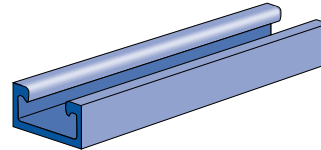
Wt/100 Ft: 134 Lbs (199 kg/100 m)  
Aluminum Type 6063-T6  
12 Gauge Nominal Thickness .109" (2.8mm)



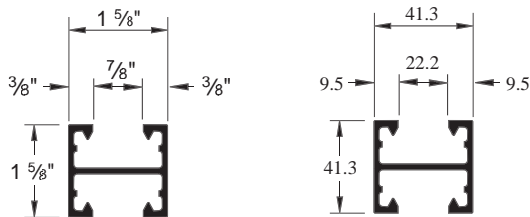
**P4000 EA**



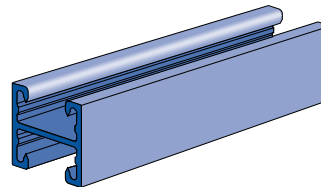
Wt/100 Ft: 45 Lbs (67 kg/100 m)  
Aluminum Type 6063-T6  
Nominal Thickness .078" (2.0mm)



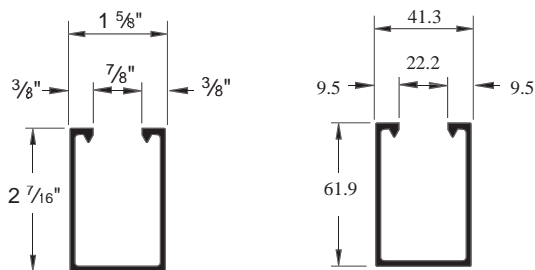
**P4001 EA**



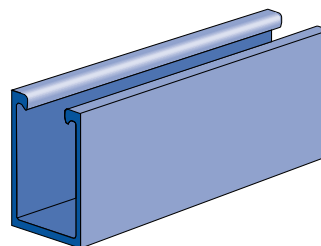
Wt/100 Ft: 66 Lbs (98 kg/100 m)  
Aluminum Type 6063-T6  
Nominal Thickness .078" (2.0mm)



**P5500 EA**



Wt/100 Ft: 97 Lbs (144 kg/100 m)  
Aluminum Type 6063-T6  
Nominal Thickness .109" (2.8mm)



1 5/8" Channel

Telestrut System

Nuts & Hardware

General Fittings

Pipe/Conduit Supports

Electrical Fittings

Concrete Inserts

1 1/4" Framing System

1 3/16" Framing System

Fiberglass System

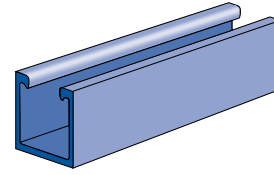
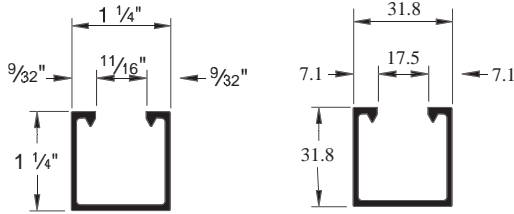
Special Metals

PrimeAngle System

Product Index

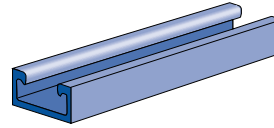
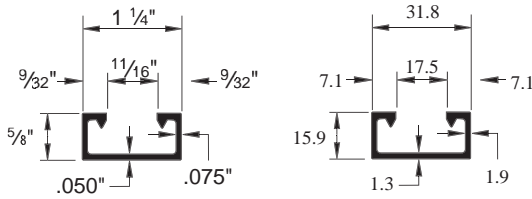
**A1000 EA**

Wt/100 Ft: 40 Lbs (60 kg/100 m)  
 Aluminum Type 6063-T6  
 Nominal Thickness .075" (1.9mm)



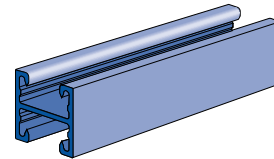
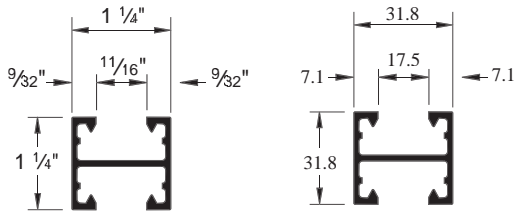
**A4000 EA**

Wt/100 Ft: 25 Lbs (37 kg/100 m)  
 Aluminum Type 6063-T6  
 12 Gauge Nominal Thickness .050" (1.3mm)  
 Standard Length 16 Ft.



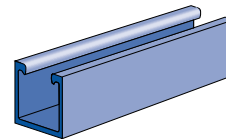
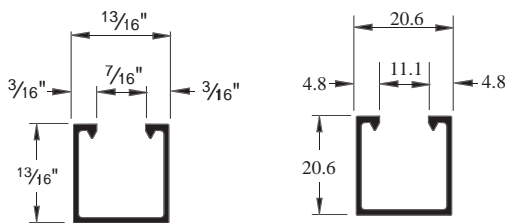
**A4001 EA**

Wt/100 Ft: 40 Lbs (60 kg/100 m)  
 Aluminum Type 6063-T6  
 Nominal Thickness .078" (2.0mm)  
 Standard Length 16 Ft.



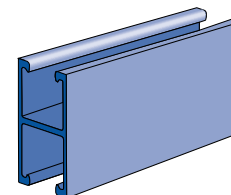
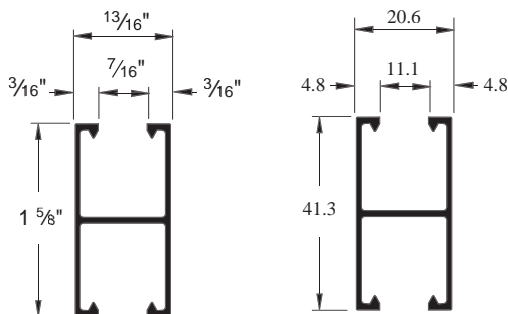
**P6000 EA**

Wt/100 Ft: 12 Lbs (18 kg/100 m)  
 Aluminum Type 6063-T6  
 Nominal Thickness .040" (1.0mm)  
 Standard Length 16 Ft.



**P6001 EA**

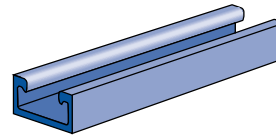
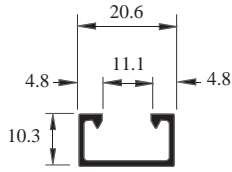
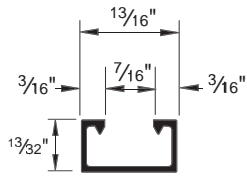
Wt/100 Ft: 20 Lbs (30 kg/100 m)  
 Aluminum Type 6063-T6  
 Nominal Thickness .040" (1.0mm)  
 Standard Length 16 Ft.





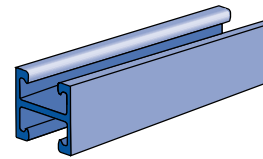
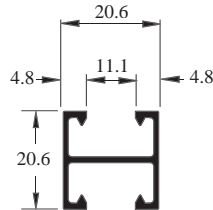
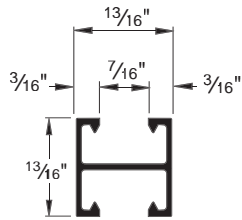
**P7000 EA**

Wt/100 Ft: 9 Lbs (13 kg/100 m)  
 Aluminum Type 6063-T6  
 Nominal Thickness .040" (1.0mm)  
 Standard Length 10 Ft.



**P7001 EA**

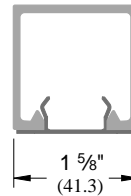
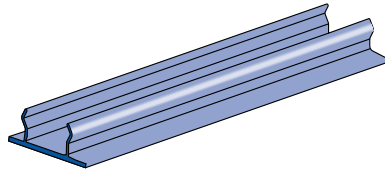
Wt/100 Ft: 17 Lbs (25 kg/100 m)  
 Aluminum Type 6063-T6  
 12 Gauge Nominal Thickness .040" (1.0mm)  
 Standard Length 10 Ft



**P3184 EA**

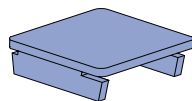
**Closure Strip**

Wt/100 Ft: 21 Lbs (31 kg/100 m)  
 Aluminum Type 6063-T6  
 Standard Length 10 Ft



**P1280 EA, P4280 EA, P5580 EA**

**End Caps**



Part Number	Use With Channel	Wt/100 Ft Lbs(kg/m)
P1280 EA	P1000 EA	3.5 1.6
P4280 EA	P4000 EA	1.5 0.7
P5500 EA	P5500 EA	4.9 2.2

1 5/8" Channel  
 Telesruct System  
 Nuts & Hardware  
 General Fittings  
 Pipe/Conduit Supports  
 Electrical Fittings  
 Concrete Inserts  
 1 1/4" Framing System  
 1 3/16" Framing System  
 Fiberglass System  
 Special Metals  
 PrimeAngle System  
 Product Index