

Conduit Outlet Boxes

For Rigid Conduit & IMC

Type GUA

With internally threaded bodies
(Cover threads into box)

Use:

To provide access to conductors for pulling, splicing, maintenance and future changes/upgrades. Allows connection of straight conduit runs, branch conduit runs and 90° bends.

Features:

- O-Ring gasket provided to assure NEMA 4 rating.
- Smooth hub bushings protect insulation when pulling conductors.
- Cast-in brackets on cover for use with breaker-bar tools for tightening/loosening.
- Tapered threaded hubs (NPT)
- Threaded for Rigid Conduit or IMC
- For additional covers, see Pages BA24-28.
- Functions as a 25% fill sealing fitting when used with GUASC sealing covers on page BA26. (Splices and taps are not allowed in sealing fittings.)

Material/Finish:

½" - 1" Copper-free Aluminum cover with Malleable Iron body/Zinc Electroplated Aluminum Enamel
1¼" - 2" Malleable Iron cover and body/Zinc Electroplated Aluminum Enamel

Optional Material:

½" - 1" Malleable Iron cover available. Add suffix "MC" - see table.
For Aluminum cover and body, see page BB2.

Optional Finish:

Hot Dip or Mechanical Galvanize. Add Suffix "G" to Malleable Iron catalog number. Example: GUAT-50MCG. Contact your local representative for pricing and availability.

Third Party Certification:



UL Listed: E-30513

Listed for:

Class I, Div. 1, 2, Groups C, D
Class I, Zone 1, 2, Groups IIA, IIB
Class II, Div. 1, 2, Groups E, F, G
Class III
NEMA 4, 7CD, 9EFG



CSA Certified: 020945

Applicable Third Party Standards:

UL Standard: 886
CSA: C22.2 No. 30
NEC Articles 500-503 & 505
Mil. Spec: Mil-F-28675
Fed. Spec: A-A-50563

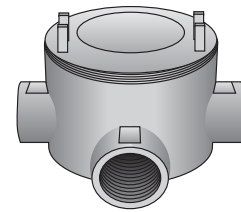
Trade Size (inches)	Aluminum Cover/ Malleable Iron Body	Malleable Iron Cover/Body	Malleable Iron Cover/Body UL/CSA/FM Certified with Ground Screw/Lug
½	GUAT-50	GUAT-50MC	GUAT-50CS
¾	GUAT-75	GUAT-75MC	GUAT-75CS
1	GUAT-100	GUAT-100MC	GUAT-100CS
1¼		GUAT-125	GUAT-125CS
1½		GUAT-150	GUAT-150CS
2		GUAT-200	GUAT-200CS
½	GUAE-50	GUAE-50MC	GUAE-50CS
¾	GUAE-75	GUAE-75MC	GUAE-75CS
1	GUAE-100	GUAE-100MC	GUAE-100CS
½	GUAL-50	GUAL-50MC	GUAL-50CS
¾	GUAL-75	GUAL-75MC	GUAL-75CS
1	GUAL-100	GUAL-100MC	GUAL-100CS
1¼		GUAL-125	GUAL-125CS
1½		GUAL-150	GUAL-150CS
2		GUAL-200	GUAL-200CS
½	GUAC-50	GUAC-50MC	GUAC-50CS
¾	GUAC-75	GUAC-75MC	GUAC-75CS
1	GUAC-100	GUAC-100MC	GUAC-100CS
1¼		GUAC-125	GUAC-125CS
1½		GUAC-150	GUAC-150CS
2		GUAC-200	GUAC-200CS
½	GUALB-50	GUALB-50MC	GUALB-50CS
¾	GUALB-75	GUALB-75MC	GUALB-75CS
1	GUALB-100	GUALB-100MC	GUALB-100CS
1¼		GUALB-125	GUALB-125CS
1½		GUALB-150	GUALB-150CS
2		GUALB-200	GUALB-200CS
½	GUAX-50	GUAX-50MC	GUAX-50CS
¾	GUAX-75	GUAX-75MC	GUAX-75CS
1	GUAX-100	GUAX-100MC	GUAX-100CS
1¼		GUAX-125	GUAX-125CS
1½		GUAX-150	GUAX-150CS
2		GUAX-200	GUAX-200CS

Suggested Specifications:

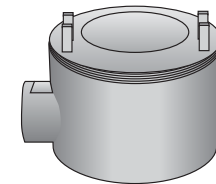
Hazardous location conduit outlet boxes shall be used in hazardous locations to provide for change in conduit direction, access to conductors, and as pull and splice boxes. They shall be malleable iron, with internally threaded bodies and cast in brackets on the cover. The boxes shall be UL Listed and suitable for wet locations. Hazardous location conduit outlet boxes shall be O-Z/Gedney Type GUA.

Dimensional Data:

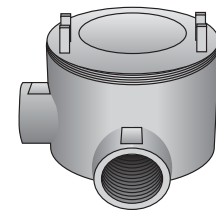
See Pages BA19 and BA20.



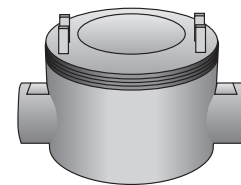
Type GUAT



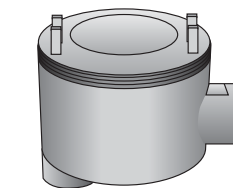
Type GUAE



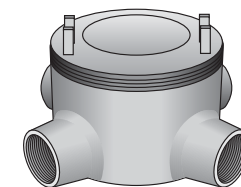
Type GUAL



Type GUAC



Type GUALB



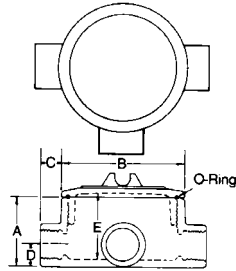
Type GUAX

Conduit Outlet Boxes

For Rigid Conduit & IMC

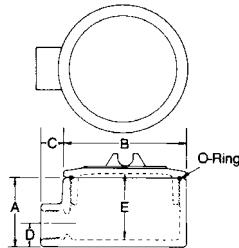
Dimensional Data:

Type GUAT



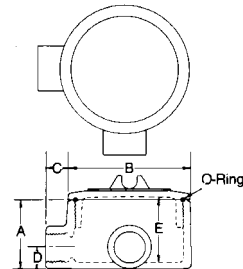
Catalog Number	Trade Size	Dimensions in Inches					Cover Opening	Volume Cu. In.
		A	B	C	D	E		
GUAT-50	1/2	2	3 5/8	3/4	5/8	2	3	13.5
GUAT-75	3/4	2 1/4	3 3/8	3/4	3/4	2 1/8	3	15.0
GUAT-100	1	2 1/2	3 3/8	7/8	7/8	2 3/8	3	17.0
GUAT-125	1 1/4	3 3/8	4 1/4	1 1/8	1 1/8	3	3 3/4	30.0
GUAT-150	1 1/2	3 3/4	5 3/8	1 1/8	1 1/4	3 3/4	5 1/8	70.0
GUAT-200	2	4 1/8	5 3/8	7/8	7/8	4 1/8	5 1/8	75.0

Type GUAE



Catalog Number	Trade Size	Dimensions in Inches					Cover Opening	Volume Cu. In.
		A	B	C	D	E		
GUAE-50	1/2	2	3 5/8	3/4	5/8	2	3	13.5
GUAE-75	3/4	2 1/4	3 3/8	3/4	3/4	2 1/8	3	15.0
GUAE-100	1	2 1/2	3 3/8	7/8	7/8	2 3/8	3	17.0

Type GUAL



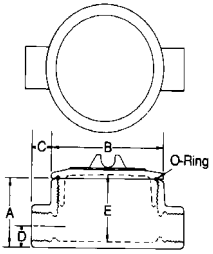
Catalog Number	Trade Size	Dimensions in Inches					Cover Opening	Volume Cu. In.
		A	B	C	D	E		
GUAL-50	1/2	2	3 5/8	3/4	5/8	2	3	13.5
GUAL-75	3/4	2 1/4	3 3/8	3/4	3/4	2 1/8	3	15.0
GUAL-100	1	2 1/2	3 3/8	7/8	7/8	2 3/8	3	17.0
GUAL-125	1 1/4	3 3/8	4 1/4	1 1/8	1 1/8	3	3 3/4	30.0
GUAL-150	1 1/2	3 3/4	5 3/8	1 1/8	1 1/4	3 3/4	5 1/8	70.0
GUAL-200	2	4 1/8	5 3/8	7/8	7/8	4 1/8	5 1/8	75.0

Conduit Outlet Boxes

For Rigid Conduit & IMC

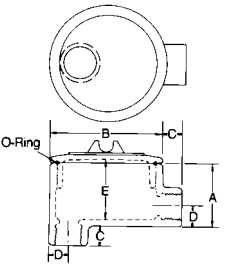
Dimensional Data:

Type GUAC



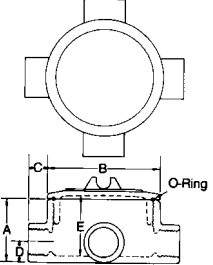
Catalog Number	Trade Size	Dimensions in Inches					Cover Opening	Volume Cu. In.
		A	B	C	D	E		
GUAC-50	1/2	2	3 5/8	3/4	5/8	2	3	13.5
GUAC-75	3/4	2 1/4	3 3/8	3/4	3/4	2 1/8	3	15.0
GUAC-100	1	2 1/2	3 3/8	7/8	7/8	2 3/8	3	17.0
GUAC-125	1 1/4	3 3/8	4 1/4	1 1/8	1 1/8	3	3 3/4	30.0
GUAC-150	1 1/2	3 3/4	5 3/8	1 1/8	1 1/4	3 3/4	5 1/8	70.0
GUAC-200	2	4 1/8	5 3/8	7/8	7/8	4 1/8	5 1/8	75.0

Type GUALB



Catalog Number	Trade Size	Dimensions in Inches					Cover Opening	Volume Cu. In.
		A	B	C	D	E		
GUALB-50	1/2	2	3 3/8	3/4	5/8	2	3	13.5
GUALB-75	3/4	2 1/4	3 3/8	3/4	3/4	2 1/8	3	15.0
GUALB-100	1	2 1/2	3 3/8	7/8	7/8	2 3/8	3	17.0
GUALB-125	1 1/4	3 3/8	4 1/4	1 1/8	1 1/8	3	3 3/4	30.0
GUALB-150	1 1/2	3 3/4	5 3/8	1 1/8	1 1/4	3 3/4	5 1/8	70.0
GUALB-200	2	4 1/8	5 3/8	7/8	7/8	4 1/8	5 1/8	75.0

Type GUAX



Catalog Number	Trade Size	Dimensions in Inches					Cover Opening	Volume Cu. In.
		A	B	C	D	E		
GUAX-50	1/2	2	3 5/8	3/4	5/8	2	3	13.5
GUAX-75	3/4	2 1/4	3 3/8	3/4	3/4	2 1/8	3	15.0
GUAX-100	1	2 1/2	3 3/8	7/8	7/8	2 3/8	3	17.0
GUAX-125	1 1/4	3 3/8	4 1/4	1 1/8	1 1/8	3	3 3/4	30.0
GUAX-150	1 1/2	3 3/4	5 3/8	1 1/8	1 1/4	3 3/4	5 1/8	70.0
GUAX-200	2	4 1/8	5 3/8	7/8	7/8	4 1/8	5 1/8	75.0

Hub Covers

For GUA Outlet Boxes

Type GUAHC

Use:

Provides NPT thread hub for mounting pendant light fixtures (luminaires) on ½", ¾" and 1" trade size Type GUA outlet boxes.

Features:

- O-Ring gasket provided to assure watertightness.
- Tapered threaded hub (NPT)
- Provided with anti-rotation set-screws.
- Maximum weight capacity: 50 lbs. per NEC Section 314-27(B).


Material/Finish:

Malleable Iron/Zinc Electroplated
Steel Set Screws
Buna-N O-Ring

Optional Finish:

Hot Dip or Mechanical Galvanized.
Add suffix "G" to standard catalog number.
Contact your local representative for pricing and availability.

Third Party Certification:

-  UL Listed: E-97032
Class I, Div. 1, 2, Groups C, D
Class I, Zone 1, 2, Groups IIA, IIB
Class II, Div. 1, 2, Groups E, F, G
Class III
Suitable for wet locations

-  CSA Certified: 020945

Applicable Third Party Standards:

UL Standard: 886
CSA Standard: C22.2 No. 30
NEC Articles 500-503 & 505
Mil. Spec: Mil-F-28675
Fed. Spec: A-A-50563

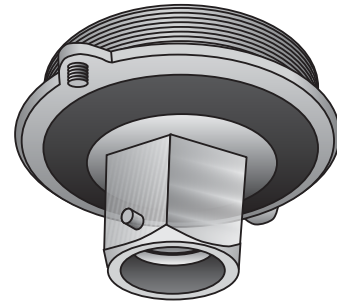
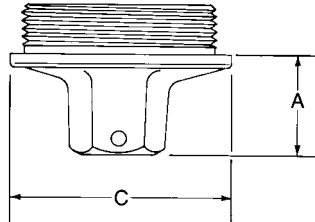
Suggested Specifications:

Where accessory covers for hazardous location outlet boxes are required for sealing, increasing volume or mounting pendant lighting fixtures (luminaires), they shall be malleable iron construction and UL Listed. These accessory covers shall be O-Z/Gedney Type GUASC, GUATE, GUADC, GUAFC or GUAHC.

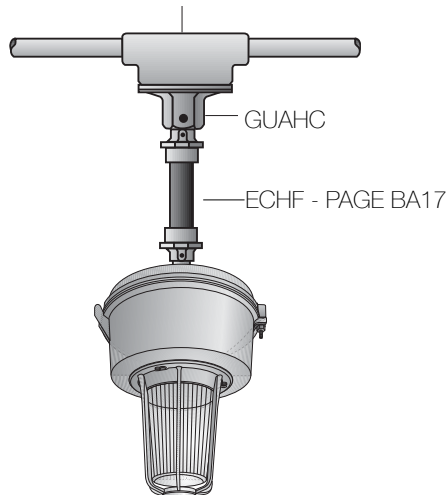
Note:

GUAHE-50 and GUAHC-75 are suitable for use with ½", ¾" and 1" trade size Type GUA malleable iron outlet boxes only. See page BA18.

Hub Trade Size (inches)	Catalog Number	Dimensions in Inches	
		Max. Dia. C	A
½"	GUAHC-50	3½"	1⅝"
¾"	GUAHC-75	3½"	1⅝"



TYPE GUA OUTLET BOX - PAGE BA18



Fixture Canopy

For GUA Outlet Boxes

Type GUAFC

Use:

Provides additional wiring space and NPT threaded hub for mounting pendant light fixtures (luminaires) on 1/2", 3/4" and 1" trade size Type GUA Outlet Boxes.

Features:

- Increases internal wiring volume (12.5 cu. in.)
- Side port allows access to conductors after fixture is mounted.
- O-Ring gasket provided to assure watertightness.
- Provided with anti-rotation set-screws.
- Maximum weight capacity: 50 lbs. per NEC Section 314-27(B).

Material/Finish:

Malleable Iron/Zinc Electroplated
Steel Set Screws
Buna-N O-Ring

Optional Finish:

Hot Dip or Mechanical Galvanized.
Add suffix "G" to standard catalog number.
Contact your local representative for pricing and availability.



Third Party Certification:

UL Listed: E-97032
Class I, Div. 1, 2, Groups C, D
Class I, Zone 1, 2, Groups IIA, IIB
Class II, Div. 1, 2, Groups E, F, G
Class III
Suitable for wet locations



CSA Certified: 020945

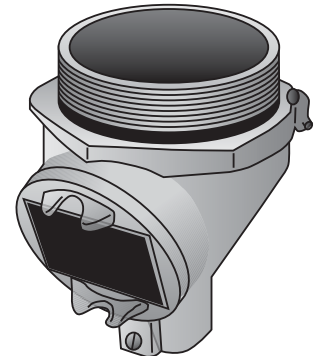
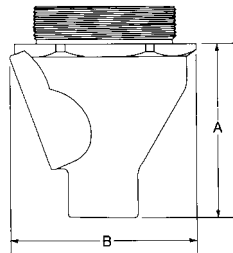
Applicable Third Party Standards:

UL Standards: 886
CSA Standard: C22.2 No. 30
NEC Articles 500-503 & 505
Mil. Spec: Mil-F-28675
Fed. Spec: A-A-50563

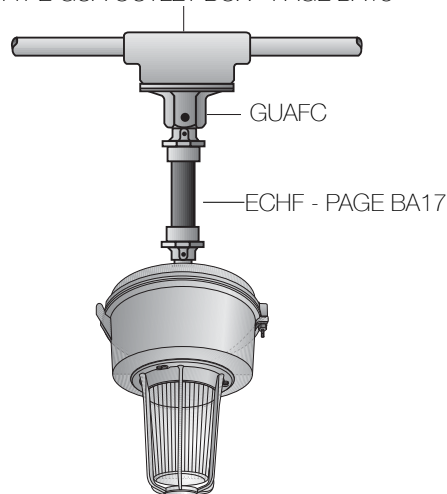
Suggested Specifications:

Where accessory covers for hazardous location outlet boxes are required for sealing, increasing volume or mounting pendant lighting fixtures, they shall be malleable iron construction and UL Listed. These accessory covers shall be O-Z/Gedney Type GUASC, GUATE, GUADC, GUAFC or GUAHC.

Hub Trade Size (inches)	Catalog Number	Dimensions in Inches	
		A	B
1/2	GUAFC-50	3 3/4"	3 1/2"
3/4	GUAFC-75	3 3/4"	3 1/2"



TYPE GUA OUTLET BOX - PAGE BA18



Note:

GUAFC-50 and GUAFC-75 are suitable for use with 1/2", 3/4" and 1" trade size Type GUA malleable iron outlet boxes only. See page BA18.

Sealing Cover

For GUA Outlet Boxes

Type GUASC

Use:

Converts ½", ¾" and 1" trade size Type GUA malleable iron outlet boxes into 25% fill sealing fittings.

Features:

- Removable plug for pouring sealing compound.
- O-Ring gasket provided to assure watertightness.
- Can be used with O-Z/Gedney EYC sealing compound.

Material/Finish:

Malleable Iron/Zinc Electroplated
Steel Set Screws
Buna-N O-Ring

Optional Finish:

Hot Dip or Mechanical Galvanized.
Add suffix "G" to standard catalog number.
Contact your local representative for pricing and availability.

Third Party Certification:



UL Listed: E-97032
Class I, Div. 1, 2, Groups C, D
Class I, Zone 1, 2, Groups IIA, IIB
Class II, Div. 1, 2, Groups E, F, G
Class III
Suitable for wet locations



CSA Certified: 020945

Applicable Third Party Standards:

UL Standard: 886
CSA Standard: C22.2 No. 30
NEC Articles 500-503 & 505
Mil. Spec: Mil-F-28675
Fed. Spec: A-A-50563

Suggested Specifications:

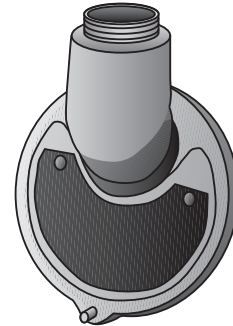
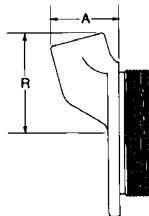
Where accessory covers for hazardous location outlet boxes are required for sealing, increasing volume or mounting pendant lighting fixtures, they shall be malleable iron construction and UL Listed. These accessory covers shall be O-Z/Gedney Type GUASC, GUATE, GUADC, GUAFC or GUAHC.

Note:

1 GUASC-1 is suitable for use with ½", ¾" and 1" trade size Type GUA malleable iron outlet boxes only. See page BA18.

2 Splices and taps not allowed in sealing fittings per NEC Article 501.

Catalog Number	Turning Radius "R"	Maximum Body Height "A"
GUASC-1	2½"	1¾"



Threaded Extension

For GUA & GUJ Outlet Boxes

Type GUADC

For GUA style boxes

Type GUJDC

For GUJ style boxes

Use:

Provides for increased internal wiring volume in ½", ¾" and 1" trade size in Type GUA or Type GUJ malleable iron outlet boxes.

Features – GUADC:

- O-Ring gasket provided to assure watertightness.
- Cast-in brackets for use with breaker bar tools.
- Increases internal wiring volume by 11 cu. in.

Features – GUJDC:

- Suitable for wet locations when mounted in the upright position
- Cast-in brackets for use with breaker bar tools.
- Increases internal wiring volume by 20 cu. in.

Material/Finish:

Malleable Iron/Zinc Electroplated
Buna-N O-Ring

Optional Finish:

Hot Dip or Mechanical Galvanized.
Add suffix "G" to standard catalog number.
Contact your local representative for pricing and availability.

Third Party Certification:



UL Listed: E-97032
Class I, Div. 1, 2, Groups C, D
Class I, Zone 1, 2, Groups IIA, IIB
Class II, Div. 1, 2, Groups E, F, G
Class III
Suitable for wet locations

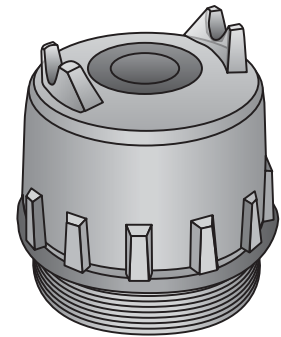
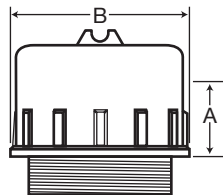


CSA Certified: 043437

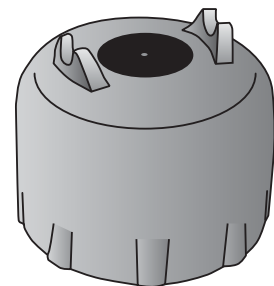
Applicable Third Party Standards:

UL Standard: 886
CSA Standard: C22.2 No. 30
NEC Articles 500-503 & 505
Mil. Spec: Mil-F-28675
Fed. Spec: A-A-50563

Catalog Number	Dimensions in Inches		Volume Cu. In.
	A	Max. Dia. B	
GUADC-1	2¾"	3½"	11
GUJDC-1	2¾"	4⅞"	20



Type GUADC



Type GUJDC

Suggested Specifications:

Where accessory covers for hazardous location outlet boxes are required for sealing, increasing volume or mounting pendant lighting fixtures, they shall be malleable iron construction and UL Listed. These accessory covers shall be O-Z/Gedney Type GUASC, GUATE, GUADC, GUJDC, GUAFC or GUAHC.

Note:

GUADC-1 and GUJDC-1 are suitable for use with ½", ¾" and 1" trade size Type GUA/J malleable iron outlet boxes only.
GUA- see page BA18
GUJ - see page BA21