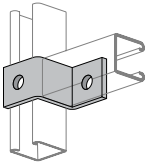


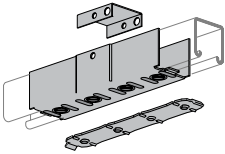
<b>POWER-STRUT®</b>	Part No. & Length	Fin.	Std Qty	Wt./ 100	List Price per 100 pcs
---------------------	----------------------	------	------------	-------------	---------------------------

**PS 647**  
Zee Connector  
1 7/8" Offset Zee Connection  
Use With PS 200, and PS 210



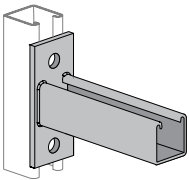
PS 647	EG	25	55	\$659.85
PS 647	GR	25	55	\$659.85

**PS 649**  
Raceway Splice Plate  
U.L. Listed Use With PS 200, and PS 210



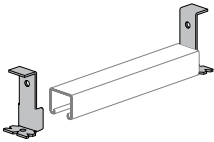
PS 649	EG	50	100	\$1125.14
PS 649	GR	50	100	\$1125.14

**PS 651**  
Reversible Strut Bracket



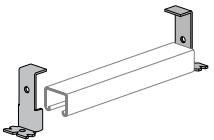
PS 651 6	EG	Bulk	185	\$2408.84
PS 651 6	GR	Bulk	185	\$2408.84
PS 651 12	EG	Bulk	293	\$2760.36
PS 651 12	GR	Bulk	293	\$2760.36
PS 651 18	EG	Bulk	401	\$3061.76
PS 651 18	GR	Bulk	401	\$3061.76
PS 651 24	EG	Bulk	509	\$4037.41
PS 651 24	GR	Bulk	509	\$4037.41

**PS 653**  
Type "B" End Cap  
Use With PS 349 Insert



PS 653	PG	100	14	\$211.67
--------	----	-----	----	----------

**PS 654**  
Type "B" End Cap  
Use With PS 449 Insert



PS 654	PG	50	12	\$240.03
--------	----	----	----	----------

**PS 655, PS 656**  
Type "A" End Cap  
Use PS 655 With PS 200 Channel  
Use PS 656 With PS 300 Channel and PS 349 Concrete Insert  
U.L. Listed



PS 655	PG	100	11	\$90.67
PS 656	PG	100	15	\$94.50

<b>POWER-STRUT®</b>	Part No. & Length	Fin.	Std Qty	Wt./ 100	List Price per 100 pcs
---------------------	----------------------	------	------------	-------------	---------------------------

**PS 658**  
Channel Hanger  
Use With PS 200, PS 210, and PS 300  
U.L. Listed



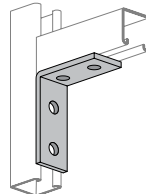
PS 658	EG	50	30	\$677.22
--------	----	----	----	----------

**PS 659**  
Channel Hanger  
Use With PS 400 and PS 500  
U.L. Listed



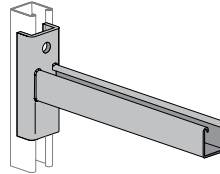
PS 659	EG	25	28	\$751.89
--------	----	----	----	----------

**PS 660**  
Four Hole Corner Angle



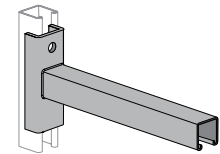
PS 660	EG	25	78	\$557.62
PS 660	GR	25	78	\$557.62

**PS 661 T1**  
Strut Bracket (Slot Up)



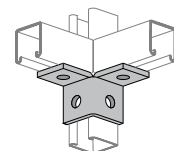
PS 661 T1 6	GR	Bulk	191	\$2376.95
PS 661 T1 12	GR	Bulk	292	\$2937.80
PS 661 T1 18	GR	Bulk	436	\$3661.19
PS 661 T1 24	GR	Bulk	536	\$4393.40

**PS 661 T2**  
Strut Bracket (Slot Down)



PS 661 T2 6	GR	Bulk	191	\$2376.95
PS 661 T2 12	GR	Bulk	292	\$2937.80
PS 661 T2 18	GR	Bulk	436	\$3661.19
PS 661 T2 24	GR	Bulk	536	\$4393.40

**PS 665**  
Four Hole Double Corner Connector



PS 665	EG	25	76	\$992.62
PS 665	GR	25	76	\$992.62