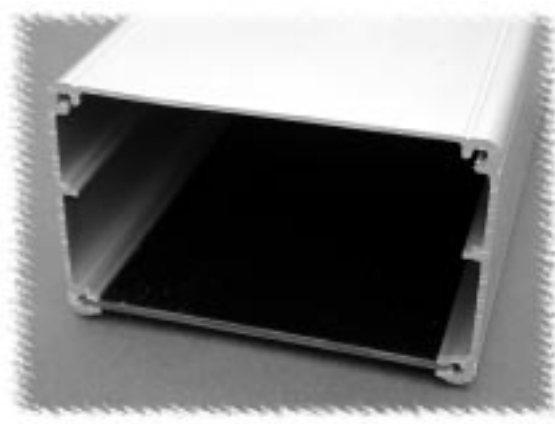
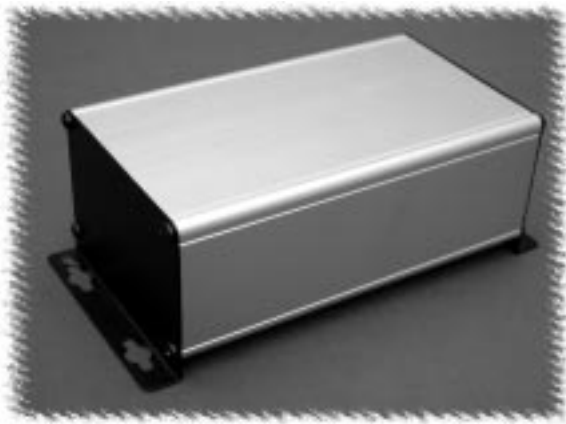


Aluminum Instrument (1455 & 1456 Series)



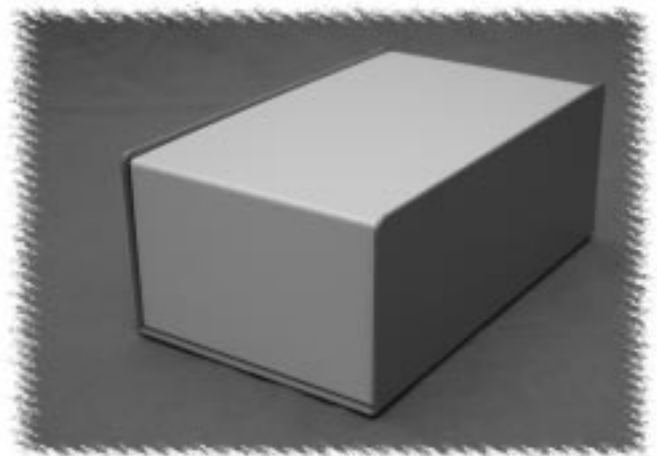
KEY FEATURES

- Designed to house electronics or for equipment interfacing where shelf or wall mounting is required.
- Consists an aluminum "U" shaped extrusion and a slide-in flat aluminum bottom plate. Steel foot "L" brackets are attached to each end. "L" brackets are punched with 0.31" (7.9 mm) diameter keyholes for easy mounting of enclosure.
- Visit our web site for drawings and complete detail by part number.
- Rugged body constructed from extruded aluminum, minimum thickness of .06" (1.5 mm).
- Available in clear or black anodized finish. The bottom slide-in plate is finished to match. The "L" brackets are finished in a textured black powder paint.
- All assembly hardware is included.

| Part Number | | Units | Dimensions | | |
|----------------|----------------|------------|-------------|--------------|------------|
| Clear Anodized | Black Anodized | | A | B | C |
| 1455ZT1601 | 1455ZT1601BK | inch mm | 6.30 160 | 3.50 88.9 | 2.20 56 |
| 1455ZT2201 | 1455ZT2201BK | inch mm | 8.66 220 | 3.50 88.9 | 2.20 56 |

KEY FEATURES

- Aluminum cases 0.081" (2 mm) thick aluminum.
- Aluminum top panel is 0.064" thick aluminum.
- Sold pre-assembled with a textured blue case and a choice of an contempora grey **or** a black top panel.
- Comes with self adhesive rubber feet and required mounting hardware.
- Replacement screws **1421J6** (Pkg. of 6, 6-32 Philips head screws).



| Part Number | | Units | Case Dimensions | | | Panel Dimensions | | |
|-----------------------------|-------------------------|------------|-----------------|------------|------------|------------------|------------|-----------|
| Off White Top and Blue Case | Black Top and Blue Case | | Length | Width | Height | Length | Width | Height |
| 1456NEK4WHBU | 1456NEK4BKBU | inch mm | 10.0 254 | 6.0 152 | 4.0 102 | 9.75 248 | 5.8 147 | 3.8 97 |

Metal

10° Sloped Instrument Consoles (1456 Series)



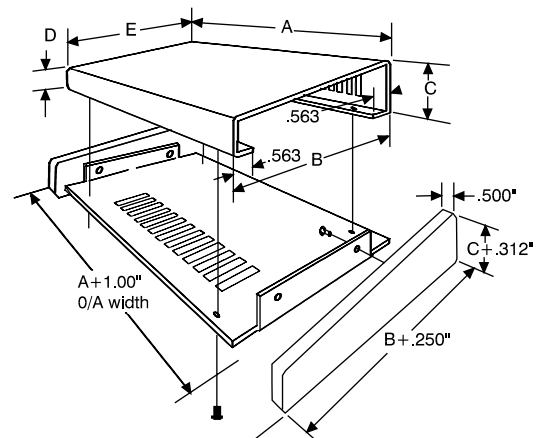
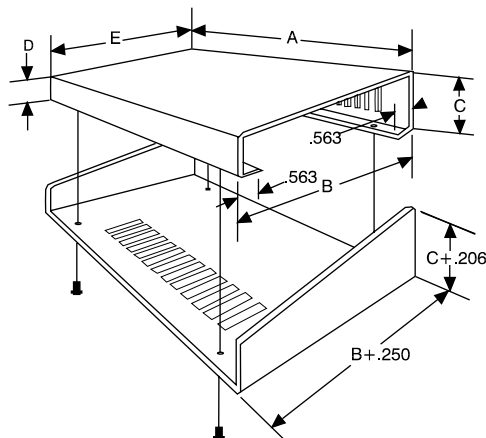
KEY FEATURES (Aluminum Top and Case)

- Aluminum cases 0.081" (2 mm) thick aluminum.
- Aluminum top panel sizes to 14" wide are 0.064" thick aluminum. Larger sizes are 0.081" thick.
- Sold pre-assembled with a textured blue case and a choice of an contempora grey or a black top panel.
- Comes with self adhesive rubber feet and required mounting hardware.
- Replacement screws **1421J6** (Pkg. of 6, 6-32 Philips head screws).

KEY FEATURES (Aluminum Top and Walnut Case)

- Solid oiled walnut sides on a black, ventilated steel base with contempora grey aluminum top panel.
- Aluminum top panel sizes to 14" wide are 0.064" thick aluminum. Larger sizes are 0.081" thick.
- Comes with self adhesive rubber feet and required mounting hardware.
- Replacement screws **1421J6** (Pkg. of 6, 6-32 Philips head screws).

| Part Number | | | Units | Dimensions | | | | | |
|-----------------------------|-------------------------|-------------------------------|------------|------------|-------------|-----------|-----------|-------------|------------|
| Off White Top and Blue Case | Black Top and Blue Case | Off White Top and Walnut Case | | A | B | C | D | E | F |
| 1456FE1WHBU | 1456FE1BKBU | | inch mm | 6.5 165 | 5.5 140 | 2.5 64 | 1.5 38 | 5.6 142 | n/a n/a |
| 1456PH1WHBU | 1456PH1BKBU | 1456PH1WHCWW | inch mm | 14 356 | 8.3 211 | 3 76 | 1.5 38 | 8.5 216 | n/a n/a |
| 1456RL1WHBU | 1456RL1BKBU | | inch mm | 17 432 | 11.3 287 | 3.5 89 | 1.5 38 | 11.5 292 | n/a n/a |
| 1456WL1WHBU | 1456WL1BKBU | | inch mm | 20 508 | 11.3 287 | 3.5 89 | 1.5 38 | 11.5 292 | n/a n/a |



Metal

15° Sloped Instrument Consoles (1456 Series)



KEY FEATURES

Aluminum Top and Case

Same as 10° series (see page 59)

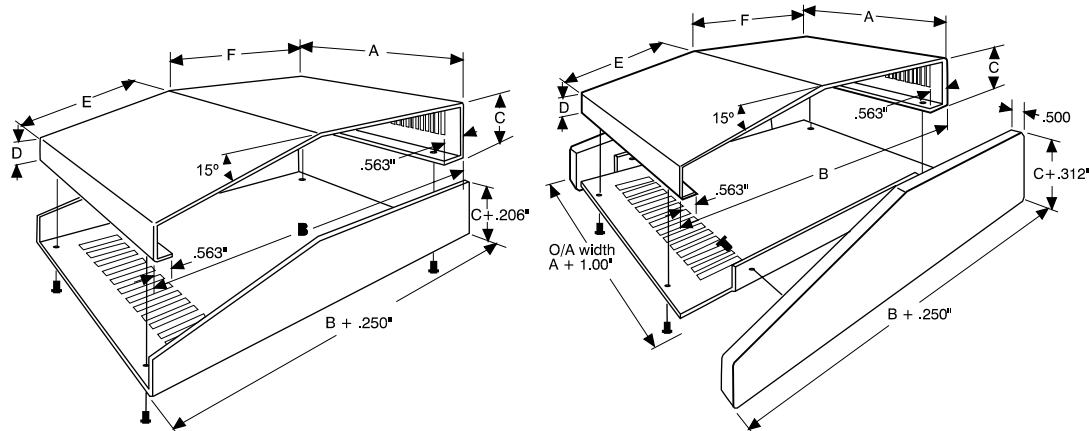
KEY FEATURES

Aluminum Top and Walnut Case

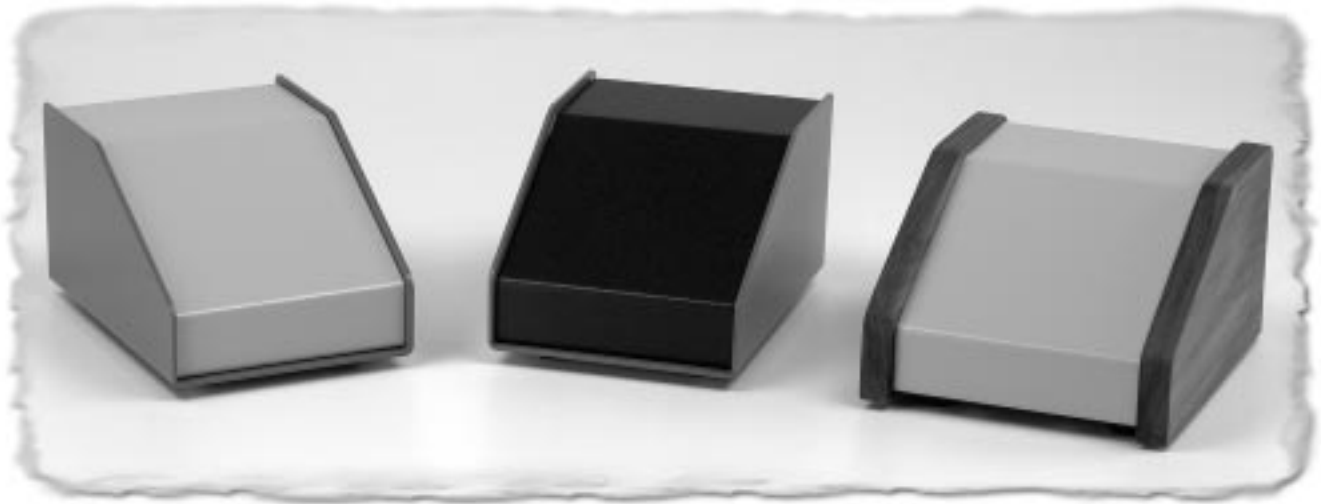
Same as 10° series (see page 59)

| Part Number | | | Units | Dimensions | | | | | |
|-----------------------------|-------------------------|-------------------------------|------------|------------|-------------|---------|-----------|------------|------------|
| Off White Top and Blue Case | Black Top and Blue Case | Off White Top and Walnut Case | | A | B | C | D | E | F |
| 1456CE2WHBU | 1456CE2BKBU | 1456CE2WHCWW | inch mm | 4 102 | 5.5 140 | 2 51 | 1.1 28 | 3.3 84 | 2.2 56 |
| 1456FE2WHBU | 1456FE2BKBU | | inch mm | 6.5 165 | 5.5 140 | 2 51 | 1.1 28 | 3.3 84 | 2.2 56 |
| 1456FH3WHBU | 1456FH3BKBU | | inch mm | 6.5 165 | 8.3 211 | 3 76 | 1.3 33 | 6.3 160 | 2.2 56 |
| 1456FH2WHBU | 1456FH2BKBU | 1456FH2WHCWW | inch mm | 6.5 165 | 8.5 216 | 2 51 | 1.1 28 | 3.3 84 | 5.2 132 |
| 1456KH3WHBU | 1456KH3BKBU | 1456KH3WHCWW | inch mm | 10 254 | 8.3 211 | 3 76 | 1.3 33 | 6.3 160 | 2.2 56 |
| 1456KL3WHBU | 1456KL3BKBU | | inch mm | 10 254 | 11.3 287 | 3 76 | 1.3 33 | 6.3 160 | 5.2 132 |
| 1456PH3WHBU | 1456PH3BKBU | 1456PH3WHCWW | inch mm | 14 356 | 8.3 211 | 3 76 | 1.3 33 | 6.3 160 | 2.2 56 |
| 1456PL3WHBU | 1456PL3BKBU | 1456PL3WHCWW | inch mm | 14 356 | 11.3 287 | 3 76 | 1.3 33 | 6.3 160 | 5.2 132 |
| 1456RH3WHBU | 1456RH3BKBU | | inch mm | 17 432 | 8.3 211 | 3 76 | 1.3 33 | 6.3 160 | 2.2 56 |
| 1456RL3WHBU | 1456RL3BKBU | | inch mm | 17 432 | 11.3 287 | 3 76 | 1.3 33 | 6.3 160 | 5.2 132 |
| 1456WH3WHBU | 1456WH3BKBU | | inch mm | 20 508 | 8.3 211 | 3 76 | 1.3 33 | 6.3 160 | 2.2 56 |
| 1456WL3WHBU | 1456WL3BKBU | | inch mm | 20 508 | 11.3 287 | 3 76 | 1.3 33 | 6.3 160 | 5.2 132 |

Metal



30° Sloped Instrument Consoles (1456 Series)



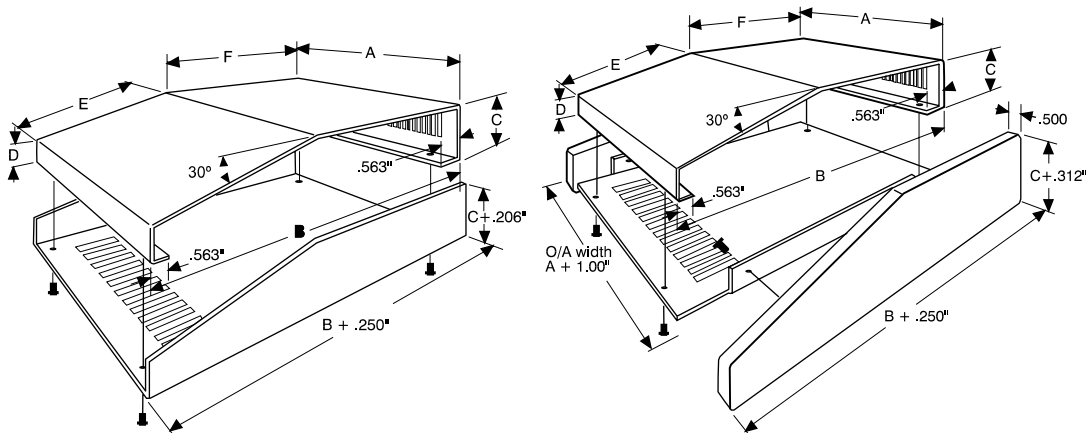
KEY FEATURES

Aluminum Top and Case
Same as 10° series (see page 59)

KEY FEATURES

Aluminum Top and Walnut Case
Same as 10° series (see page 59)

| Part Number | | | Units | Dimensions | | | | | |
|-----------------------------|-------------------------|-------------------------------|------------|------------|-------------|----------|-----------|------------|------------|
| Off White Top and Blue Case | Black Top and Blue Case | Off White Top and Walnut Case | | A | B | C | D | E | F |
| 1456CE3WHBU | 1456CE3BKBU | 1456CE3WHCWW | inch mm | 4 102 | 5.5 140 | 3 76 | 1.1 28 | 3.7 94 | 2.2 56 |
| 1456FE3WHBU | 1456FE3BKBU | | inch mm | 6.5 165 | 5.5 140 | 3 76 | 1.1 28 | 3.7 94 | 2.2 56 |
| 1456FG4WHBU | 1456FG4BKBU | | inch mm | 6.5 165 | 7.2 183 | 4 102 | 1.1 28 | 5.7 145 | 2.2 56 |
| 1456KE3WHBU | 1456KE3BKBU | | inch mm | 10 254 | 5.5 140 | 3 76 | 1.1 28 | 3.7 94 | 2.2 56 |
| 1456KG4WHBU | 1456KG4BKBU | | inch mm | 10 254 | 7.2 183 | 4 102 | 1.1 28 | 5.7 145 | 2.2 56 |
| 1456KK4WHBU | 1456KK4BKBU | 1456KK4WHCWW | inch mm | 10 254 | 10.2 259 | 4 102 | 1.1 28 | 5.7 145 | 5.2 132 |
| 1456PG4WHBU | 1456PG4BKBU | | inch mm | 14 356 | 7.2 183 | 4 102 | 1.1 28 | 5.7 145 | 2.2 56 |
| 1456PK4WHBU | 1456PK4BKBU | 1456PK4WHCWW | inch mm | 14 356 | 10.2 259 | 4 102 | 1.1 28 | 5.7 145 | 5.2 132 |
| 1456RK4WHBU | 1456RK4BKBU | | inch mm | 17 432 | 10.2 259 | 4 102 | 1.1 28 | 5.7 145 | 5.2 132 |
| 1456WK4WHBU | 1456WK4BKBU | | inch mm | 20 508 | 10.2 259 | 4 102 | 1.1 28 | 5.7 145 | 5.2 132 |



Metal



Hammond Manufacturing Co. Ltd.
394 Edinburgh Rd. North
Guelph, Ontario N1H 1E5 CANADA
© Phone: 519-822-2960 Fax: 519-822-0715



Hammond Manufacturing Co. Inc.
256 Sonwil Dr.
Cheektowaga, NY 14225 USA
Phone: 716-651-0086 Fax: 716-651-0726