

INDUSTRY FIRST

Panduit Lithium-Ion Powered Crimping Tools

Panduit offers a broad range of crimping tools featuring Milwaukee Electric Tool's M18™ XC high capacity lithium-ion batteries. First in the industry with this battery technology, Panduit crimping tools significantly improve productivity and save labor cost by delivering extended runtime per charge and a faster crimp cycle with less weight than comparable tools with NiCd or NiMH batteries. Panduit lithium-ion powered crimping tools are compatible with Panduit crimping dies and together provide UL Listed and CSA Certified connections with Panduit compression connectors for maximum reliability and safety in the physical infrastructure, contributing to lower total cost of ownership.



Key Features

Benefits

Supplied with two rechargeable 18 volt Milwaukee® M18™ XC high capacity lithium-ion batteries and battery charger	Significantly improve productivity – up to 135% more crimps per battery charge and up to a 30% faster crimp cycle time than tools with NiCd or NiMH batteries – reducing labor time and cost
LED fuel gauge	Visual indicator displays remaining power for well-timed battery changeover
Ergonomic, lightweight tool designs	Allow for one-hand operation and reduce operator fatigue to enhance workplace safety
Provide terminations with Panduit connectors, meeting the requirements of UL, CSA, NEBS Level 3, American Bureau of Shipping, and IEEE Std 837™-2002	Meet industry standards for safety, operability, and reliability
Compatible with Panduit crimping dies	Works with existing dies to save cost
Crimping dies hold position when trigger is released	Allows operator to align dies to connector prior to crimping for a consistent, reliable crimp
Controlled cycle crimping	Pressure pop-off valve indicates crimp completion to ensure a reliable crimp
In-line crimping action and rotating heads	Provide versatility for use in restricted spaces to increase productivity
Self-contained units	Completely portable for convenience in remote locations
CE approved tools with 230 volt chargers	Provide flexibility for global use

CT-3001 Die Type, Lithium-Ion Powered Hydraulic, 6 Ton, In-Line Crimping Tool

Terminates a wide range of Panduit compression connectors:



Copper lugs and splices for #8 AWG – 500 kcmil code conductor
 Copper lugs for #8 AWG – 373 kcmil flex conductor
 Copper lugs and splices for 10mm² – 240mm² class 2R conductor



Copper CTAPF taps for #10 – 3/0 AWG code conductor



Copper CTAP taps for #8 – #2 AWG code conductor

Tool Features

- Up to 90% more crimps per charge than tools with NiCd or NiMH batteries (up to 389 crimps with a Panduit 500 kcmil lug)
- ~2.9 second crimp cycle time, 26% faster than most comparable tools
- Lightweight, only 7.15 lbs. with battery
- Enclosed crimp head rotates 180°
- Ergonomic, in-line tool design ideal for limited space applications



CT-3001 and CT-3001/E





FREE!
 Heavy-Duty
 Soft Sided
 Tool Bag
 Included



PTB-HO (sold separately)



Part Number	Charger Voltage	Part Description	Specifications	Std. Pkg. Qty.
CT-3001	120 VAC 	Tool includes: • Two Milwaukee® M18™ XC high capacity lithium-ion 18VDC rechargeable batteries • One Milwaukee® battery charger • Heavy-duty bag with storage for tool, batteries, charger and crimping dies; includes 58 pockets and a shoulder strap for added convenience; 18"L x 7"W x 14"H*	Output: 6 tons (54 Kn) Jaw opening: 1.8" (45.7mm) Weight: 7.15 lbs. (3.2 kg) with battery Length: 19.5" (495.3mm) Height: 4.5" (114.3mm) Width: 2.88" (73mm) Warranty: 3 years on tool, 5 years on batteries and charger	1
CT-3001/E	230 VAC 			1
PTB-HO	—	Streamlined holster for CT-3001 Series tools. Can be secured to installer's tool belt or ladder/fixture with quick connect hooks provided.	—	1

Compatible with CD-2001 and CDM-2001 crimping dies, sold separately, see page 5.

*Tool bag also sold separately, see part number PTB-GP on page 11.

CT-2001/L Die Type, Lithium-Ion Powered Hydraulic, 6 Ton, Crimping Tool with Closed Head

Terminates a wide range of Panduit compression connectors:



Copper lugs and splices for #8 AWG – 500 kcmil code conductor
 Copper lugs for #8 AWG – 373 kcmil flex conductor
 Copper lugs and splices for 10mm² – 240mm² class 2R conductor



Copper CTAPF taps for #10 – 3/0 AWG code conductor





Copper CTAP taps for #8 – #2 AWG code conductor

Tool Features



- Up to 126% more crimps per charge than tools with NiCd or NiMH batteries (up to 224 crimps with a Panduit 500 kcmil lug)
- ~4.5 second crimp cycle time, 14% faster than most comparable tools
- Ergonomically balanced and lightweight, only 8.90 lbs. with battery
- Enclosed crimp head rotates 180°



Part Number	Charger Voltage	Part Description	Specifications	Std. Pkg. Qty.
CT-2001/L	120 VAC 	Tool includes: • Two Milwaukee® M18™ XC high capacity lithium-ion 18VDC rechargeable batteries • One Milwaukee® battery charger • One shoulder strap	Output: 6 tons (54 Kn) Jaw opening: 1.8" (45.7mm) Weight: 8.90 lbs. (3.9 kg) with battery Length: 13.13" (333.5mm) Height: 12.75" (323.9mm) Width: 3" (76.2mm)	1
CT-2001/LE	230 VAC 	• Heavy-duty bag with storage for tool, batteries, charger, and crimping dies; includes 58 pockets and a shoulder strap for added convenience; 18"L x 7"W x 14"H* • Tool incorporates D3 die pocket	Warranty: 3 years on tool, 5 years on batteries and charger	1

Compatible with CD-2001 and CDM-2001 crimping dies, sold separately, see page 5.

*Tool bag also sold separately, see part number PTB-GP on page 11.

CT-2002/L Die Type, Lithium-Ion Powered Hydraulic, 6 Ton, Crimping Tool with Open "C-Head"

Terminates a wide range of Panduit compression connectors:



Copper lugs and splices for #8 AWG – 500 kcmil code conductor
 Copper lugs and splices for #8 AWG – 373 kcmil flex conductor
 Copper lugs and splices for 10mm² – 240mm² class 2R conductor



Copper CTAPF taps for #10 – 3/0 AWG code conductor



Copper CTAP taps for #8 – #2 AWG code conductor


Tool Features



- Up to 120% more crimps per charge than tools with NiCd or NiMH batteries (up to 260 crimps with a Panduit 500 kcmil lug)
- ~3.1 second crimp cycle time, 18% faster than most comparable tools
- Open "C-head" provides easy loading of crimping dies and rotates 180°

FREE!
 Heavy-Duty
 Soft Sided
 Tool Bag
 Included



Part Number	Charger Voltage	Part Description	Specifications	Std. Pkg. Qty.
CT-2002/L	120 VAC 	Tool includes: <ul style="list-style-type: none"> • Two Milwaukee® M18™ XC high capacity lithium-ion 18VDC rechargeable batteries • One Milwaukee® battery charger • One shoulder strap • Heavy-duty bag with storage for tool, batteries, charger, and crimping dies; includes 58 pockets and a shoulder strap for added convenience; 18"L x 7"W x 14"H* • Tool incorporates D3 die pocket 	Output: 6 tons (54 Kn) Jaw opening: .95" (24.1mm) Weight: 11.75 lbs. (5.3 kg) with battery Length: 13.5" (334mm) Height: 15" (381mm) Width: 3" (76.2mm) Warranty: 5 years on tool, batteries and charger	1

Compatible with CD-2001 and CDM-2001 crimping dies, sold separately, see page 5.
 *Tool bag also sold separately, see part number PTB-GP on page 11.

For use with Panduit crimping tools:



CT-3001 Series



CT-2001 Series



CT-2002 Series

- Color-coded to provide easy matching to color-coding marked on connectors
- Embosses die index number on connector barrels to provide post crimp inspection
- Dies installed using spring loaded die retention pins, no need for tools
- Part number permanently marked on crimping die for easy identification
- Provide circumferential crimp results in terminations with premium electrical and mechanical performance



CD-2001

Part Number	Used to Install Panduit Compression Lug and Splice Sizes				Std. Pkg. Qty.
	Copper Die Color and Die No.	Copper Code Conductor Size	Copper Code and Flex Conductor Size for LCAX, LCBX, LCDX, LCCX	Copper Metric Class 2R Conductor Size	
CD-2001-8	Red P21	#8 AWG	#8 AWG	10mm ²	1
CD-2001-6	Blue P24	#6 AWG	#6 AWG	16mm ²	1
CD-2001-4	Gray P29	#4 AWG STR #3 AWG STR #2 AWG SOL	#4 AWG #5, #4, #3 AWG DLO flex	25mm ² 35mm ²	1
CD-2001-2	Brown P33	#2 AWG	#2 AWG	—	1
CD-2001-1	Green P37	#1 AWG	#1 AWG	50mm ²	1
CD-2001-1/0	Pink P42	1/0 AWG	1/0 AWG	—	1
CD-2001-2/0	Black P45	2/0 AWG	2/0 AWG	70mm ²	1
CD-2001-3/0	Orange P50	3/0 AWG	3/0 AWG	—	1
CD-2001-4/0	Purple P54	4/0 AWG	4/0 AWG	95mm ²	1
CD-2001-250	Yellow P62	250 kcmil	250 kcmil flex 262 kcmil flex	120mm ²	1
CD-2001-300	White P66	300 kcmil	—	150mm ²	1
CD-2001-350	Red P71	350 kcmil	300 kcmil flex 313 kcmil flex	—	1
CD-2001-400	Blue P76	400 kcmil	350 kcmil flex 373 kcmil flex	185mm ²	1
CD-2001-500	Brown P87	500 kcmil	—	240mm ²	1



CDM-2001

Part Number	Used to Install Panduit Tap Part Numbers			Std. Pkg. Qty.
	Copper Die Color and Die No.	Copper Tap	No. of Crimps	
CD-2001-8	Red P21	CTAPF10-16-C	1	1
CD-2001-6	Blue P24	CTAPF8-12-C	1	1
CD-2001-4	Gray P29	CTAPF6-12-C	1	1
CD-2001-2	Brown P33	CTAPF4-12-C	2	1
CD-2001-1	Green P37	CTAPF3-12-C	2	1
CD-2001-1/0	Pink P42	CTAPF2-12-C	2	1
CD-2001-2/0	Black P45	CTAPF1-12-C	3	1
CD-2001-3/0	Orange P50	CTAPF1/0-12-L	3	1
CD-2001-4/0	Purple P54	CTAPF2/0-12-Q	3	1
CD-2001-250	Yellow P62	CTAPF3/0-12-Q	3	1
CD-2001-BG	PBG	CTAP4-8-L	1	1
	PBG	CTAP4-6-L	1	
	PBG	CTAP4-4-L	1	
CD-2001-C	P-C	CTAP2-4-Q	2	1
	P-C	CTAP2-2-X	2	

Multi-Crimp Dies – Multiple Crimps in One Tool Cycle

CDM-2001-2	Brown P33M	CTAPF4-12-C	1	1
CDM-2001-1	Green P37M	CTAPF3-12-C	1	1
CDM-2001-1/0	Pink P42M	CTAPF2-12-C	1	1
CDM-2001-2/0	Black P45M	CTAPF1-12-C	2	1
CDM-2001-3/0	Orange P50M	CTAPF1/0-12-L	2	1

CT-2930/L Die Type, Lithium-Ion Powered Hydraulic, 14 Ton, Crimping Tool

Terminates a wide range of Panduit compression connectors:



Copper lugs and splices for #8 AWG – 750 kcmil code conductor
 Copper lugs and splices for #8 AWG – 600 kcmil flex conductor
 Copper lugs and splices for 10mm² – 400mm² class 2R conductor

StructuredGround™ Direct Burial Grounding Connectors for #6 AWG – 250 kcmil code conductor

Copper CTAPF taps for #10 – 3/0 AWG code conductor

Copper CTAP taps for #8 – 4/0 AWG code conductor

Copper HTCT taps for #14 AWG – 250 kcmil code conductor
 Copper HTCT taps for #14 – 4/0 AWG flex conductor



Aluminum lugs and splices for #6 AWG – 600 kcmil code conductor

Tool Features



- Up to 63% more crimps per charge than tools with NiCd or NiMH batteries (up to 78 crimps with a Panduit 500 kcmil lug)
- ~9.6 second crimp cycle time, 30% faster than most comparable tools
- Open “C-head” provides easy loading of crimping dies and rotates 180°



Part Number	Charger Voltage	Part Description	Specifications	Std. Pkg. Qty.
CT-2930/L	120 VAC 	Tool includes: • Two Milwaukee® M18™ XC high capacity lithium-ion 18VDC rechargeable batteries • One Milwaukee® battery charger • One shoulder strap	Output: 14 tons (124.5 Kn) Jaw opening: 1.65" (41.9mm) Weight: 17.9 lbs. (8.1 kg) with battery Length: 14.5" (368.3mm) Height: 16.5" (419.1mm) Width: 3.25" (82.6mm)	1
CT-2930/LE	230 VAC 	• Heavy-duty bag with storage for tool, batteries, charger, and crimping dies; includes 58 pockets and a shoulder strap for added convenience; 18"L x 7"W x 14"H*	Warranty: 5 years on tool, batteries and charger	1

Compatible with CD-920, CDM-920, and CD-930 crimping dies, sold separately, see page 7.
 *Tool bag also sold separately, see part number PTB-GP on page 11.

CD-920, CDM-920 and CD-930 Crimping Dies

For use with Panduit crimping tool:



CT-2930 Series



CD-920

- Color-coded to provide easy matching to color-coding marked on connectors
- Embosses die index number on connector barrels to provide post crimp inspection
- Dies installed using spring loaded die retention pins, no need for tools
- Part number permanently marked on crimping die for easy identification
- Provides circumferential crimp results in terminations with premium electrical and mechanical performance

Part Number	Used to Install Panduit Compression Lug and Splice Sizes							Std. Pkg. Qty.
	Copper Die Color and Die No.	Copper Code Conductor Size	Copper Code and Flex Conductor Size for LCAX, LCBX LCDX, LCCX	Copper Flex Conductor Size for LCAF, LCCF, SCSF	Copper Metric Class 2R Conductor Size	Aluminum Die Color and Die No.	Aluminum Code Conductor Size	
CD-920-8	Red P21	#8 AWG	#8 AWG	#8 AWG	10mm ²	—	—	1
CD-920-6	Blue P24	#6 AWG	#6 AWG	#6 AWG	16mm ²	—	—	1
CD-920-4	Gray P29	#4 AWG STR #3 AWG STR #2 AWG SOL	#4 AWG #5, #4, #3 AWG DLO flex	#4 AWG	25mm ² 35mm ²	Gray P29	#6 AWG	1
CD-920-2	Brown P33	#2 AWG	#2 AWG	#2 AWG	—	—	—	1
CD-920-1	Green P37	#1 AWG	#1 AWG	—	50mm ²	Green P37	#4 AWG	1
CD-920-1/0	Pink P42	1/0 AWG	1/0 AWG	#1 AWG	—	Pink P42	#2 AWG	1
CD-920-2/0	Black P45	2/0 AWG	2/0 AWG	1/0 AWG	70mm ²	Gold P45	#1 AWG	1
CD-920-3/0	Orange P50	3/0 AWG	3/0 AWG	2/0 AWG	—	Tan P50	1/0 AWG	1
CD-920-4/0	Purple P54	4/0 AWG	4/0 AWG	3/0 AWG	95mm ²	Olive P54	2/0 AWG	1
CD-920-250	Yellow P62	250 kcmil	250 kcmil flex 262 kcmil flex	4/0 AWG	120mm ²	Ruby P62	3/0 AWG	1
CD-920-300	White P66	300 kcmil	—	250 kcmil 262 kcmil	150mm ²	White P66	4/0 AWG	1
CD-920-350	Red P71	350 kcmil	300 kcmil flex 313 kcmil flex	300 kcmil 313 kcmil	—	Red P71	250 kcmil	1
CD-920-400	Blue P76	400 kcmil	350 kcmil flex 373 kcmil flex	350 kcmil 373 kcmil	185mm ²	Blue P76	300 kcmil	1
CD-920-500	Brown P87	500 kcmil	444 kcmil flex 450 kcmil flex	444 kcmil 450 kcmil	240mm ²	Brown P87	350 kcmil	1
CD-920-600	Green P94	600 kcmil	—	—	300mm ²	Green P94	400 kcmil	1
CD-920-500A	Pink P99	500 kcmil	500 kcmil flex 535 kcmil flex 600 kcmil flex	500 kcmil 535 kcmil	—	Pink P99	500 kcmil	1
CD-920-750	Black P106	750 kcmil	—	646 kcmil	400mm ²	Black P106	600 kcmil	1



CD-930H



CDM-920



CD-930G

Part Number	Used to Install Panduit Tap Part Numbers			Std. Pkg. Qty.
	Copper Die Color and Die No.	Copper Tap	No. of Crimps	
CD-920H-6	Orange PH6	HTCT6X-6X-1	1	1
CD-920H-2	Brown PH2	HTCT2-2-1	1	1
CD-930H-250	Purple PH25	HTCT250-2-1, HTCT250-250-1	1	1
CD-920-BG	PBG	CTAP4-8-L, CTAP4-6-L, CTAP4-4-L	1	1
CD-920-C	PC	CTAP2-4-Q, CTAP2-2-X	1	1
CD-920-D3	PD3	CTAP4/0-2-X, CTAP4/0-2/0-X, CTAP4/0-4/0-X	1	1
CD-920-O	PO	CTAP2/0-2-X, CTAP2/0-2/0-X	1	1

Multiple Crimp Dies – Multiple Crimps in One Tool Cycle

CDM-920-2	Brown P33M	CTAPF4-12-C	1	1
CDM-920-1	Green P37M	CTAPF3-12-C	1	1
CDM-920-1/0	Pink P42M	CTAPF2-12-C	1	1
CDM-920-2/0	Black P45M	CTAPF1-12-C	1	1
CDM-920-3/0	Orange P50M	CTAPF1/0-12-L	1	1
CDM-920-4/0	Purple P54M	CTAPF2/0-12-Q	1	1
CDM-920-250	Yellow P62M	CTAPF3/0-12-Q	1	1

Part Number	Used to Install StructuredGround™ Direct Burial Grounding Connector Part Numbers		Std. Pkg. Qty.
	Copper Die Color and Die No.	Copper Tap	
CD-930G-1/0	Red PG10	GCE1/0-1/0, GCC6X61/0-1/0	1
CD-930G-250	Black PG25	GCE250-1/0, GCE250-250, GCC6X6250-1/0, GCC6X6250-250, GPC4H250-2	1
CD-930G-500	Blue PG50	GCE500-1/0, GCE500-250, GCC6X6500-1/0, GCC6X6500-250	1

CT-2940/L Die Type, Lithium-Ion Powered Hydraulic, 15 Ton, Crimping Tool

Terminates a wide range of Panduit compression connectors:



Copper lugs and splices for #8 AWG – 1000 kcmil code conductor
 Copper lugs and splices for #8 AWG – 777.7 kcmil flex conductor
 Copper lugs and splices for 10mm² – 630mm² class 2R conductor

StructuredGround™ Direct Burial Grounding Connectors for #6 AWG – 250 kcmil code conductor

Copper CTAPF taps for #10 – 3/0 AWG code conductor

Copper CTAP taps for #8 – 4/0 AWG code conductor

Copper HTCT taps for #14 AWG – 250 kcmil code conductor
 Copper HTCT taps for #14 – 4/0 AWG flex conductor



Aluminum lugs and splices for #6 AWG – 1000 kcmil code conductor

Tool Features



- Up to 43% more crimps per charge than tools with NiCd or NiMH batteries (up to 63 crimps with a Panduit 500 kcmil lug)
- ~8.8 second crimp cycle time, 27% faster than most comparable tools
- Flip-top crimp head rotates 180°



Part Number	Charger Voltage	Part Description	Specifications	Std. Pkg. Qty.
CT-2940/L	120 VAC 	Tool includes: • Two Milwaukee® M18™ XC high capacity lithium-ion 18VDC rechargeable batteries • One Milwaukee® battery charger • One shoulder strap	Output: 15 tons (136 Kn) Jaw opening: 2" (50.8mm) Weight: 24.35 lbs. (11.0 kg) with battery Length: 22" (558.8mm) Height: 10.75" (273.1mm) Width: 3.75" (95.3mm) Warranty: 5 years on tool, batteries and charger	1
CT-2940/LE	230 VAC 	• Plastic tool case with storage for tool, batteries, charger, shoulder strap and crimping dies		1

Compatible with CD-940 crimping dies, sold separately, see page 9.

Also works with CD-920, CDM-920, and CD-930 crimping dies, on page 7 with CD-940-DA die adapter, sold separately, see page 9.

For use with Panduit crimping tool:



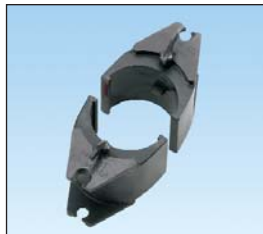
CT-2940 Series



CD-940

- Color-coded for easy matching to color-coding marked on connectors
- Embosses die index number on connector barrels for post crimp inspection
- Dies installed using spring loaded die retention pins, no need for tools
- Part number permanently marked on crimping die for easy identification
- Provides circumferential crimp results in terminations with premium electrical and mechanical performance

Part Number	Used to Install Panduit Compression Lug and Splice Sizes							Std. Pkg. Qty.
	Copper Die Color and Die No.	Copper Code Conductor Size	Copper Code and Flex Conductor Size for LCAX, LCBX LCDX, LCCX	Copper Flex Conductor Size for LCAF, LCCF, SCSF	Copper Metric Class 2R Conductor Size	Aluminum Die Color and Die No.	Aluminum Code Conductor Size	
CD-940-750	Black P106	750 kcmil	—	646 kcmil	400mm ²	—	—	1
CD-940-800	Orange P107	800 kcmil	—	777 kcmil	—	—	—	1
CD-940-1000	White P125	1000 kcmil	—	—	500mm ² 630mm ²	—	—	1
CD-940-750X	Yellow P115	—	777.7 kcmil flex	—	—	—	—	1
CD-940-750A	—	—	—	—	—	Red P125	750 kcmil	1
CD-940-800A	—	—	—	—	—	Gray P140	800 kcmil	1
CD-940-1000A	—	—	—	—	—	Brown P161	1000 kcmil	1



CD-940-DA

Part Number	Part Description	Std. Pkg. Qty.
CD-940-DA	Die adapter for use with Panduit CT-940CH and CT-2940 crimping tools required for installation of Panduit CD-920, CDM-920, and CD-930 crimping dies in these tools.	1

See page 7 for CD-920, CDM-920 and CD-930 die part selection.

CT-2980/L Uni-Die™ Dieless, Lithium-Ion Powered Hydraulic, 6.2 Ton, Crimping Tool

Terminates a wide range of Panduit compression connectors:



Dieless crimping tool design provides UL Listed and CSA Certified wire range-taking capability with Panduit copper lugs and splices for #4 AWG – 750 kcmil code conductor



Tool Features



- Up to 135% more crimps per charge than tools with NiCd or NiMH batteries (up to 183 crimps with a Panduit 500 kcmil lug)
- ~3.5 second crimp cycle time, 25% faster than most comparable tools
- Ergonomically balanced and lightweight, only 11.75 lbs. with battery
- Aluminum alloy flip-top crimp head rotates 360°
- Dieless crimping tool design provides wire range-taking capability with Panduit copper compression connectors

FREE!
Heavy-Duty
Soft Sided
Tool Bag
Included



Part Number	Charger Voltage	Part Description	Specifications	Std. Pkg. Qty.
CT-2980/L	120 VAC 	Tool includes: • Two Milwaukee® M18™ XC high capacity lithium-ion 18VDC rechargeable batteries • One Milwaukee® battery charger • One shoulder strap	Output: 6.2 tons (56 Kn) Jaw opening: 1.5" (38.1mm) Weight: 11.75 lbs. (8.32 kg) with battery Length: 14.75" (374.7mm) Height: 15" (381mm) Width: 3" (76.2mm)	1
CT-2980/LE	230 VAC 	• Heavy-duty bag with storage for tool, batteries, and charger; includes 58 pockets and a shoulder strap for added convenience; 18"L x 7"W x 14"H*	Warranty: 5 years on tool, batteries and charger	1

*Tool bag also sold separately, see part number PTB-GP on page 11.



PTB-GP



CT-LIBCKIT



CT-LIBA

Part Number	Part Description	Std. Pkg. Qty.
PTB-GP	Heavy duty bag for crimping tools and accessories. Includes 58 pockets and a shoulder strap for added convenience. 18"L x 7"W x 14"H.	1
CT-LIBCKIT	Kit to convert Panduit CT-2001, CT-2002, CT-2930, CT-2940, and CT-2980 NiCd tools to lithium-ion powered. Kit includes one Panduit CT-LIBA battery adapter, two Milwaukee® M18™ XC high capacity lithium-ion 18VDC rechargeable batteries, and one 120 VAC Milwaukee® battery charger.	1
CT-LIBA	Lithium-ion battery adapter to convert Panduit CT-2001, CT-2002, CT-2930, CT-2940 and CT-2980 NiCd tools to Milwaukee® M18™ XC high capacity lithium-ion batteries (48-11-1828).	1

Cable Cutters and Stripper

NEW!



CCT-500

NEW!



CCT-320



CST114-157



Part Number	Part Description	Std. Pkg. Qty.
CCT-500	Ratchet cable cutting tool cuts both copper and aluminum solid code and stranded flex cables up to 2 -1/32" (52mm) diameter. Warranty: 1 year.	1
CCT-320	Ratchet cable cutting tool cuts both copper and aluminum solid code cables from 1/4" (6mm) to 1" (25mm) and stranded flex cables from 1/4" (6mm) to 1-1/4" (32mm) diameter. Warranty: 1 year.	1
CST114-157	Cable stripping tool for stripping insulation from cables 3/16" (4.8mm) to 1 9/16" (39.6mm) diameter. Includes replacement cutting blade. Warranty: 90 days.	1

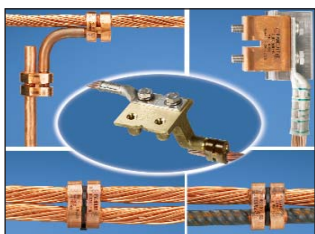
Complete Solutions From Panduit

Panduit power connectors and crimping tools help you achieve faster, more reliable terminations and a safer working environment.



- **Meet your application needs and project schedules** – Over 3,500 standard part numbers readily available
- **Ensure safe and reliable terminations with maximum flexibility** – Panduit compression connectors are UL and CSA approved with both Panduit and specified competitor crimping tools and dies
- **Save labor time and reduce injuries** – Full line of battery powered, dieless, pneumatic and manual crimping tools feature ergonomic designs, controlled cycle mechanisms, and quick crimp cycle times for less stress on shoulders, hands and wrists

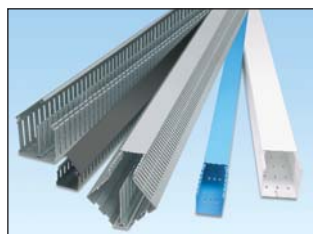
Panduit offers comprehensive, innovative solutions to optimize the connecting, routing, bundling, protecting and identification of the physical infrastructure for lower total cost of ownership.



Grounding Solutions



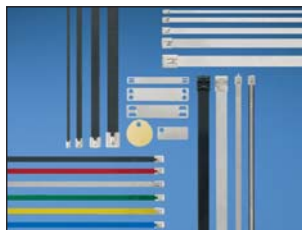
Terminals and Ferrules



Wiring Duct



Cable Ties



Stainless Steel System



Abrasion Protection



Identification and Safety

WORLDWIDE SUBSIDIARIES AND SALES OFFICES

PANDUIT CANADA
Markham, Ontario
cs-cdn@panduit.com
Phone: 800.777.3300

PANDUIT EUROPE LTD.
London, UK
cs-emea@panduit.com
Phone: 44.20.8601.7200

PANDUIT SINGAPORE PTE. LTD.
Republic of Singapore
cs-ap@panduit.com
Phone: 65.6305.7575

PANDUIT JAPAN
Tokyo, Japan
cs-japan@panduit.com
Phone: 81.3.6863.6000

PANDUIT LATIN AMERICA
Jalisco, Mexico
cs-la@panduit.com
Phone: 52.33.3777.6000

PANDUIT AUSTRALIA PTY. LTD.
Victoria, Australia
cs-aus@panduit.com
Phone: 61.3.9794.9020

For a copy of Panduit product warranties, log on to www.panduit.com/warranty

For more information

Visit us at www.panduit.com

Contact Customer Service by email: cs@panduit.com
or by phone: 800-777-3300 and reference PCCB12

PANDUIT[®]

©2010 Panduit Corp.
ALL RIGHTS RESERVED.
Printed in the U.S.A.
Product Bulletin Number **SA-PCCB12**
Replaces SA-PCCB11
8/2010