

GANG BOXES

1-5/8" AND 2-1/2" DEEP

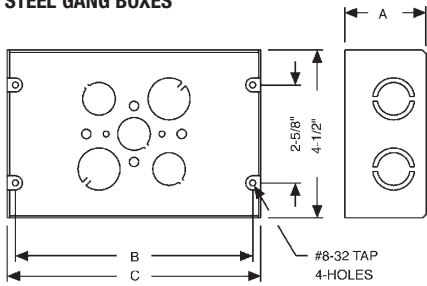
Application

- Gang boxes are used where a number of wiring devices are to be centrally located

Product Features

- Gang boxes save time in installation, no need to gang boxes together
- Have 1/2" and 3/4" concentric KO's for use with a wide variety of wiring methods
- Bottom KO pattern, 3-1/2" and 2-3/4" at either end of box
- Accept two styles of covers, flat and 3/4" raised device cover
- Device covers also fit next smaller box, i.e. three-gang cover fits two or three-gang box
- Use low voltage partitions #974 or #949

STEEL GANG BOXES



Compliance

- UL – File E195978



941 through 945



951 through 958

RACO STEEL BOXES & COVERS

ORDERING INFORMATION - DIMENSIONS

GANG BOXES – 1-5/8" & 2-1/2" DEEP – WELDED WITH CONDUIT KO'S							
CATALOG NUMBER	NO. OF GANGS	KNOCKOUTS			CU. IN.	STD. PKG.	UPC BAR CODE
		TOP &* BOTTOM	SIDES*	BACK			
941	2	4-3/4", 4-conc.	4-conc.	3-1/2", 2-3/4"	70.0	5	
942	3	8-3/4", 2-conc.	4-conc.	6-1/2", 4-3/4"	90.0	5	
943	4	4-3/4", 4-conc.	4-conc.	6-1/2", 4-3/4"	110.0	5	
944	5	6-3/4", 4-conc.	4-conc.	6-1/2", 4-3/4"	130.0	5	
945	6	6-3/4", 6-conc.	4-conc.	6-1/2", 4-3/4"	150.0	1	
951	2	8-conc.	4-conc.	3-1/2", 2-3/4"	47.0	5	—
952	3	10-conc.	4-conc.	6-1/2", 4-3/4"	60.0	5	
953	4	12-conc.	4-conc.	6-1/2", 4-3/4"	72.8	5	
954	5	14-conc.	4-conc.	6-1/2", 4-3/4"	85.8	5	—
955	6	16-conc.	4-conc.	6-1/2", 4-3/4"	98.5	1	—
956	7	18-conc.	4-conc.	6-1/2", 4-3/4"	111.5	1	—
957	8	20-conc.	4-conc.	6-1/2", 4-3/4"	124.5	1	—
958	9	22-conc.	4-conc.	6-1/2", 4-3/4"	137.3	1	—

*1-5/8" deep boxes, concentric KO's are 1/2" & 3/4" *2-1/2" deep boxes, concentric KO's are 3/4" & 1"

DIMENSIONS				
CATALOG NUMBER	NO. OF GANGS	A	B	C
941	2	2-1/2"	6-3/8"	6-13/16"
942	3	2-1/2"	8-3/16"	8-5/8"
943	4	2-1/2"	10"	10-7/16"
944	5	2-1/2"	11-13/16"	12-1/4"
945	6	2-1/2"	13-5/8"	14-1/16"
951	2	1-5/8"	6-3/8"	6-13/16"
952	3	1-5/8"	8-3/16"	8-5/8"
953	4	1-5/8"	10"	10-7/16"
954	5	1-5/8"	11-13/16"	12-1/4"
955	6	1-5/8"	13-5/8"	14-1/16"
956	7	1-5/8"	15-7/16"	15-7/8"
957	8	1-5/8"	17-1/4"	17-11/16"
958	9	1-5/8"	19-1/16"	19-1/2"

4714, THE INSIDER® will secure nonmetallic sheathed cable in 1/2" KO (See pg. B87)




A50**COVERS AND PARTITIONS****Application**

- Gang box covers permit the mounting of devices

Product Feature

- Device covers also fit next smaller box, i.e. three gang cover fits two or three gang box

Compliance

-  – File E195978 (Cat. #974 and 949 not UL Listed)



846



823



974



949

ORDERING INFORMATION - DIMENSIONS

FLAT, BLANK COVERS FOR GANG BOXES					
CATALOG NUMBER	NO. OF GANGS	WIDTH	CU. IN.	STD. PKG.	UPC BAR CODE
844	2	7-1/16"	—	5	—
845	3	8-7/8"	—	5	—
846	4	10-11/16"	—	5	—
847	5	12-1/2"	—	1	—
848	6	14-5/16"	—	1	—
849	7	16-1/8"	—	1	—
850	8	17-15/16"	—	1	—
851	9	19-3/4"	—	1	—

DEVICE COVERS FOR GANG BOXES RAISED 3/4"					
CATALOG NUMBER	NO. OF GANGS	WIDTH	CU. IN.	STD. PKG.	UPC BAR CODE
821	2	7-1/16"	10.0	5	—
822	3	8-7/8"	15.3	5	
823	4	10-11/16"	20.3	5	
824	5	12-1/2"	25.5	5	—
825	6	14-5/16"	30.5	1	—
826	7	16-1/8"	35.5	1	—
827	8	17-15/16"	40.8	1	—
828	9	19-3/4"	45.8	1	—

LOW VOLTAGE PARTITION FOR GANG BOXES			
CATALOG NUMBER	DESCRIPTION	STD. PKG.	UPC BAR CODE
974	For 1-5/8" Deep	25	—
949	For 2-1/2" Deep	25	—

STEEL CONCRETE RINGS

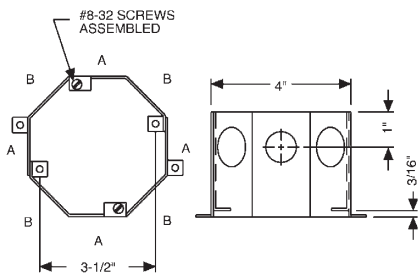
Applications

- Concrete rings are used with poured deck (floor) in high-rise construction
- These boxes are installed on wooden or steel concrete forms. After the forms are removed, the box is flush with the concrete
- RACO® Ceiling Fan Concrete Ring 284 is listed for support of ceiling fans

Product Features

- Flat sides provide excellent contact for locknuts
- External ears are used to nail the ring to the wood form
- The top cover is removable for before-pour work
- Ears on inside of box are for fixtures
- Waxed fixture ears prevent concrete from interfering with the threads
- Variety of cover plates are available
- Cover plate must be ordered separately with all (except 280 which includes a 891 cover) RACO® concrete rings

STEEL CONCRETE RINGS



Compliance

- – File E195978



270RAC, 271, 272, 273, 274, 275, 276, 277, 278, 279



284 GORILLA-RING™



*280 shown with 918 BARS



890



891



892



893

RACO STEEL BOXES & COVERS

ORDERING INFORMATION - DIMENSIONS

CONCRETE RINGS									
CATALOG NUMBER	DEPTH	KO SIZES	NO. ROWS KO'S	CU. IN.	STD. PKG.	UPC BAR CODE	RECOMMENDED MAX. SUPPORT LOAD		
							CEILING FAN (DYNAMIC) LBS.	FIXTURE (STATIC) LBS.	
270RAC	2"	1/2" & 3/4"	Single	24.5	25	—	No	50	
271	2-1/2"	1/2" & 3/4"	Single	30.8	25	—	No	50	
272	3"	1/2" & 3/4"	Single	37.0	25	—	No	50	
277	3"	3/4" & 1"	Single	37.0	25	—	No	50	
273	3-1/2"	1/2" & 3/4"	Double	43.0	20	—	No	50	
278	3-1/2"	3/4" & 1"	Single	43.0	20	—	No	50	
274	4"	1/2" & 3/4"	Double	49.3	20	—	No	50	
279	4"	3/4" & 1"	Double	49.3	20	—	No	50	
275	5"	1/2" & 3/4"	Double	61.5	10	—	No	50	
276	6"	1/2" & 3/4"	Double	74.0	10	—	No	50	
284*	4"	1/2" & 3/4"	Double	49.3	6	—	35	75	

*Ceiling Fan Support Box

HUNG CEILING BOX – 3-1/2" DEEP				
CATALOG NUMBER	DESCRIPTION	CU. IN.	STD. PKG.	UPC BAR CODE
280	3/8" x 1/2" Long stud, 8-1/2", 8-3/4" KO's*	43.0	20	—
918	30" Long bars for hung ceiling box	—	40	—

*Order bars separately

CONCRETE RING – BACK PLATES/COVERS AND ADAPTER RING					
CATALOG NUMBER	DESCRIPTION	KNOCKOUTS	O.D. DIAM.	STD. PKG.	UPC BAR CODE
890	—	3-1/2", 2-3/4"	4-1/2"	25	—
891	3/8" Stud	2-1/2", 2-3/4"	4-1/2"	25	—
892	Flat, blank	—	4-1/2"	25	—
893	Joins Oct. Ext. ring to concrete ring Includes two retained screws	—	4-1/2"	50	—

KNOCKOUT LOCATIONS		
KNOCKOUT SIZE	A	B
1/2" and 3/4" KOs	1/2"	3/4"
3/4" and 1" KOs	3/4"	1"



A52

MASONRY BOXES AND PARTITIONS

2-1/2" AND 3-1/2" DEEP

RACO STEEL BOXES & COVERS

Applications

- Masonry boxes are designed to accommodate the mounting of switches or other devices in masonry walls
- Gangable masonry boxes offer the option of constructing a box to hold two or more devices
- 2-1/2" deep boxes are used in 4" block walls, 3-1/2" deep boxes are used in 6" or 8" block walls


Non-Gangable Product Features

- Rugged welded construction does not fall apart during construction
- Available from one to six gang configurations in both 2-1/2" and 3-1/2" depths
- Rectangular shape fits square cuts in block
- Large volume design allows for additional work room inside the box
- Standard 1/2" and 3/4" concentric knockouts
- Device ears are formed inside the box, preventing mortar from getting in the device holes
- Steel low voltage partition: 971 fits all 2-1/2" or 3-1/2" depths (non-gangable versions only)
- Standard wall plates cover the box

Gangable Product Features

- Rugged design does not fall apart during construction
- Gangable design allows installer to build unlimited number of gangs to hold multiple devices
- Rectangular shape fits square cuts in block
- Standard 1/2" - 3/4" TKO® knockouts
- Device ears are formed inside the box, preventing mortar from getting in the device holes
- Steel low voltage partitions: 675 fits 2-1/2" deep box, 676 fits 3-1/2" deep box
- Forward mounted grounding provision allows for easy installation of grounding pigtail
- Standard wall plates cover the box

Compliance

-  – File E195978 (Cat. #971 not UL Listed)



ORDERING INFORMATION - DIMENSIONS

MASONRY BOXES – 2-1/2" DEEP – NONGANGABLE WITH CONDUIT KO'S								
CATALOG NUMBER	NO. OF GANGS	WIDTH (B)	KNOCKOUTS			CU. IN.	STD. PKG.	UPC BAR CODE
			ENDS	BOTTOM	SIDES			
690	1	1-31/32"	2 conc.	2 conc.	4 conc.	16.0	25	—
691	2	3-25/32"	4 conc.	4 conc.	4 conc.	31.8	25	—
692	3	5-19/32"	6 conc.	3 conc.	4 conc.	47.8	10	—
693	4	7-13/32"	8 conc.	4 conc.	4 conc.	63.5	10	—
694	5	9-7/32"	10 conc.	5 conc.	4 conc.	79.5	10	—
960	6	11-1/32"	12 conc.	6 conc.	4 conc.	95.3	1	—

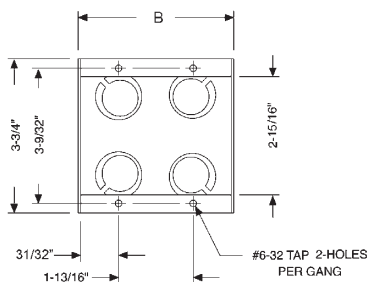
MASONRY BOXES – 3-1/2" DEEP – NONGANGABLE WITH CONDUIT KO'S								
CATALOG NUMBER	NO. OF GANGS	WIDTH (B)	KNOCKOUTS			CU. IN.	STD. PKG.	UPC BAR CODE
			ENDS	BOTTOM	SIDES			
695	1	1-31/32"	4 conc.	2 conc.	4 conc.	22.5	25	—
8695	1	1-31/32"	4 conc.	2 conc.	4 conc.	22.5	25	
696	2	3-25/32"	8 conc.	4 conc.	4 conc.	45.0	25	
697	3	5-19/32"	12 conc.	3 conc.	4 conc.	67.3	10	
698	4	7-13/32"	16 conc.	4 conc.	4 conc.	89.8	10	—
699	5	9-7/32"	20 conc.	5 conc.	4 conc.	112.3	10	—
965	6	11-1/32"	24 conc.	6 conc.	4 conc.	134.8	1	—

MASONRY BOXES – GANGABLE WITH CONDUIT KO'S									
CATALOG NUMBER	NO. OF GANGS	DEPTH	WIDTH (B)	KNOCKOUTS			CU. IN.	STD. PKG.	UPC BAR CODE
				ENDS	BOTTOM	SIDES			
688	1	2-1/2"	1-15/16"	2 TKO®	2 TKO®	4 TKO®	15.5	20	
689	1	3-1/2"	1-15/16"	4 TKO®	2 TKO®	4 TKO®	22.5	20	

LOW VOLTAGE PARTITION FOR MASONRY BOXES			
CATALOG NUMBER	DESCRIPTION	STD. PKG.	UPC BAR CODE
FOR NON-GANGABLE MASONRY BOXES			
971	For 2-1/2" or 3-1/2" deep boxes	25	
FOR GANGABLE MASONRY BOXES			
675	For 2-1/2" deep boxes	20	
676	For 3-1/2" deep boxes	20	

 4714, THE INSIDER® will secure nonmetallic sheathed cable in 1/2" KO (See pg. B87)

STEEL MASONRY BOXES 691, 696



UNIVERSAL PROTECTOR PLATES

FOR USE WITH MUDRINGS - POWER

Applications

- Eliminates drywall compound, debris, paint, and drywall router bit from entering box or damaging conductors or devices
- Available in raised or flat versions — **Raised** covers all Decora™, duplex and switch wiring devices
Flat close off mudring opening and protect wires from drywall's router bit tools

Product Features

- Covers entire opening of mudring
- No hardware required for use - simply snaps on and off standard mudring
- Durable steel construction allows cover to be used multiple times
- Holes in cover allow for use of screws to prevent theft and add additional security (screws not included)
- Recessed tab allows cover to be easily removed using pliers, side cutters or flat screw driver

Reference Data

- Patent 7,102,079



RACO STEEL BOXES & COVERS

ORDERING INFORMATION - DIMENSIONS

RAISED 3/4" FOR DEVICE AND WIRE PROTECTION

CATALOG NUMBER	DESCRIPTION	STD. PKG.	UPC BAR CODE
701R	To protect 1 device / for 1 device mudring*	24	—
702R	To protect 2 devices / for 2 device mudring*	24	—

*For protection of switch, GFCI, or duplex receptacles

FLAT FOR WIRE PROTECTION

CATALOG NUMBER	DESCRIPTION	STD. PKG.	UPC BAR CODE
701F	To protect 1 device opening / for 1 device mudring	100	—
702F	To protect 2 device opening / for 2 device mudring	50	—
700F	To protect round opening for fixture mudring with 2-3/4" O.C. device ears	50	—

FLAT FOR WIRE PROTECTION (GANGABLE)

CATALOG NUMBER	DESCRIPTION	STD. PKG.	UPC BAR CODE
701FG	Gangable for RACO 686, 687, and RACO non-gangable masonry boxes	100	—

CATALOG NUMBER	SINGLE DEVICE MUDRING	TWO DEVICE MUDRING	ROUND MUDRING	RACO® 686 & 687 & NONGANGABLE MASONRY BOXES	CADDY® MP1S™	CADDY® MP2S™
701R	X	—	—	—	—	—
702R	—	X	—	—	—	—
701F	X	—	—	—	S	—
702F	—	X	—	—	—	S
700F	—	—	X	—	—	—
701FG	—	—	—	X	—	—

S = Secondary Use



A54

UNIVERSAL PROTECTOR PLATES

FOR LOW VOLTAGE MOUNTING RINGS/BRACKETS - DATA

RACO STEEL BOXES & COVERS

Applications

- Eliminates drywall compound, debris, paint, and drywall router bit from entering box or damaging conductors or devices
- Available in raised or flat versions —
Raised covers all Decora™, duplex and switch wiring devices
Flat close off mudring opening and protect wires from drywall's router bit tools

Product Features

- Covers entire opening of low voltage plate
- Features patented wire retrieval loop that allows data cable to be attached to cover — NO MORE LOST CABLES IN THE WALL!
- No hardware required for use - simply snaps on and off standard mudring
- Durable steel construction allows cover to be used multiple times
- Finger pull bail allows cover to be easily removed from ring
- Allows for multi access to work area for multi stage jobs
- Holes in cover allow for use of screws to prevent theft and add additional security (screws not included)

Reference Data

- Patent 7,102,079



ORDERING INFORMATION - DIMENSIONS

RAISED 3/4" FOR CONTROL DEVICE AND WIRE PROTECTION			
CATALOG NUMBER	DESCRIPTION	STD. PKG.	UPC BAR CODE
701RD	To protect 1 device, for Caddy® Ring / low voltage mounting bracket MP1S™*	24	—
702RD	To protect 2 device, for Caddy® Ring / low voltage mounting bracket MP2S™*	24	—

*For protection of control devices, cable jacks, most Decora® style inserts and similar devices

FLAT FOR LOW VOLTAGE WIRE PROTECTION			
CATALOG NUMBER	DESCRIPTION	STD. PKG.	UPC BAR CODE
701FD	To protect 1 device opening, for Caddy® Ring / low voltage mounting bracket MP1S™*	50	—
702FD	To protect 2 device opening, for Caddy® Ring / low voltage mounting bracket MP2S™*	25	—

*Can also be used on most steel single gang mudrings

CATALOG NUMBER	SINGLE DEVICE MUDRING	TWO DEVICE MUDRING	ROUND MUDRING	RACO® 686 & 687 & NONGANGABLE MASONRY BOXES	CADDY® MP1S™	CADDY® MP2S™
701FD	X	—	—	—	S	—
702FD	—	X	—	—	—	S
701RD	X	—	—	—	S	—
702RD	—	X	—	—	—	S

S = Secondary Use



BOX SUPPORT PRODUCTS

BRACES AND EXTENDERS

Applications (9003 - 9006, 9012 - 9015)

- For metal or wood stud box positioning

Features

- Available for 1-1/2" or 2-1/8" deep boxes
- Locator dimples on face of bar allows for exact positioning of single or multiple boxes
- Dimple feature provides quick start of screws, and reinforcement to prevent box mounting screws from stripping out when box is mounted
- Design of adjustable brace allows ground screw to clear when box is mounted
- Boxes attach easily with self-tapping screws

Compliances

-  

Applications (9016)

- Extension for leg to accommodate 6" deep studs

Features

- To be used with the following RACO® SKU's: 9001, 9002, 9009, 9010, 9011
- Simple snap-on design

Compliances

-  



9003 - 9006



9012 - 9015

ORDERING INFORMATION - DIMENSIONS

NON-ADJUSTABLE BOX MOUNTING BRACE FOR 4" AND 4-11/16" SQUARE BOX			
CATALOG NUMBER	DESCRIPTION	STD. PKG.	UPC BAR CODE
9003	For 16" stud spacing, 1-1/2" deep box	50	—
9004	For 16" stud spacing, 2-1/8" deep box	50	—
9005	For 24" stud spacing, 1-1/2" deep box	50	—
9006	For 24" stud spacing, 2-1/8" deep box	50	—

ADJUSTABLE BOX MOUNTING BRACE FOR 4" AND 4-11/16" SQUARE BOX			
CATALOG NUMBER	DESCRIPTION	STD. PKG.	UPC BAR CODE
9012	Adjusts from 10-3/8" to 18", 1-1/2" deep box	50	—
9013	Adjusts from 10-3/8" to 18", 2-1/8" deep box	50	—
9014	Adjusts from 15" to 26", 1-1/2" deep box	50	—
9015	Adjusts from 15" to 26", 2-1/8" deep box	50	—



9016

ORDERING INFORMATION - DIMENSIONS

LEG EXTENDER			
CATALOG NUMBER	DESCRIPTION	STD. PKG.	UPC BAR CODE
9016	To be used for 6" stud size	100	—

RACO STEEL BOXES & COVERS

A56

BOX SUPPORT PRODUCTS

BRACKETS

RACO STEEL BOXES & COVERS

Applications (9007, 9018)

- Supports electrical boxes when mounted to a stud

Features

- Dual-point mounting ensures a secure, stable installation
- When properly mounted, the leg cannot be bent by other trades during the construction process
- Mounts 4" or 4-11/16" sq. box to 2-1/2", 3-1/2", 4" and 6" studs
- Box can be mounted on bracket without raised cover to save time by providing maximum work area in box
- When mounted, drywall ring is brought to within 1/16" of drywall every time and will not bulge or break out drywall

Compliance

-  

Applications (9001, 9002)

- Positions electrical boxes, plaster rings, and low voltage devices between studs

Features

- Fold-back stabilizer leg prevents bracket from being pushed back in wall cavity during drywall installation
- Designed for 2-1/2" or 3-1/2" studs. Add RACO® 9016 to leg to accommodate 6" depth studs
- Mounts 4" or 4-11/16" sq. boxes
- Box can be mounted on ring without raised cover to save time by providing maximum work area inside box
- When mounted, raised cover is brought to within 1/16" of drywall every time and will not bulge or break out drywall

Compliances

-  



9007



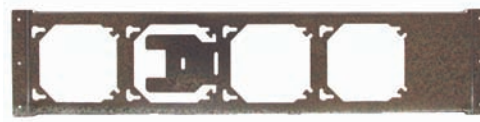
9018

ORDERING INFORMATION - DIMENSIONS

TWO-POINT BOX MOUNTING BRACKETS			
CATALOG NUMBER	DESCRIPTION	STD. PKG.	UPC BAR CODE
9007	Right side stud mount	100	—
9018	Left or right side stud mount	100	—



9001



9002

ORDERING INFORMATION - DIMENSIONS

FIXED POSITION BOX MOUNTING BRACKETS			
CATALOG NUMBER	DESCRIPTION	STD. PKG.	UPC BAR CODE
9001	3 - box, for 16" on center studs	50	—
9002	4 - box, for 24" on center studs	50	—

BOX SUPPORT PRODUCTS

BRACKETS AND BOX SUPPORTS

Applications (9011)

- Supports 3" x 2" switch boxes when mounted to stud

Features

- Accommodates all 3" x 2" switch boxes with one or two screw plaster ears
- Bracket can be ganged on same side of stud allowing for increased flexibility
- Bracket can be mounted on both sides of stud for double mounting
- Will not bulge or break out drywall when mounted

Compliances

- UL US SR

Applications (9008, 9017)

- Mounts standard low voltage wall plates, old work (existing walls) or new work (wood or metal studs)

Features

- For use on low voltage Class 2 circuits only where electrical boxes are not required
- Can be used to mount telephone jacks, computer outlets, security/sound systems, television antennas, etc.
- Fast, precise mounting of low voltage wall plates to walls or studs

Compliances

- UL US SR

Applications (9009, 9010)

- Supports electrical boxes from floor or concrete forms

Features

- Fold-back stabilizer prevents bracket from being pushed back in wall cavity during drywall installation
- Designed for mounting sq. boxes 12" or 18" above floor. Mounts to metal or wood plate
- Mounts 4" or 4-11/16" sq. boxes
- Box can be mounted on support without drywall ring to save time by providing maximum working area in box
- When mounted, raised cover is brought to within 1/16" of drywall every time. Will not bulge or break out drywall

Compliances

- UL US SR



9011



9008 - 9017

ORDERING INFORMATION - DIMENSIONS

BOX MOUNTING BRACKET FOR 3" X 2" SWITCH BOXES

CATALOG NUMBER	DESCRIPTION	STD. PKG.	UPC BAR CODE
9011	For 2-1/2" or 3-1/2" metal studs	100	—

LOW VOLTAGE MOUNTING BRACKET

CATALOG NUMBER	DESCRIPTION	STD. PKG.	UPC BAR CODE
9008	New or old work, single-gang	100	—
9017	New or old work, single-gang	20 bags*	

*2 brackets per poly-bag



9009



9010

ORDERING INFORMATION - DIMENSIONS

FLOOR MOUNTED BOX SUPPORT

CATALOG NUMBER	DESCRIPTION	STD. PKG.	UPC BAR CODE
9009	12" tall bracket	25	—
9010	18" tall bracket	25	—

A58**ACCESSORIES FOR STEEL BOXES**RACO STEEL BOXES
& COVERS**Application (920, 922)**

- Adjustable bar hanger allows box to be placed between ceiling joists or wall studs quickly and easily

Product Features

- Both RACO® 920 and 922 bar fixture hangers allow box to be located anywhere along length of bar
- RACO® 920 includes 3/8" trade size stud to accommodate fixture stem
- 922 Clip installs in 1/2" knockout located in bottom (back) of box
- RACO® box must be ordered separately

Box Installation

- Bar hangers attach to octagon or square boxes through center 1/2" knockouts
- Remove the knockout
- Remove the screw and fixture stud (or clip) from bar hanger
- Place the stud inside the box and replace the screw
- When box is located accurately between the joists, tighten the screw securely

Compliance

- UL – File E195973

BOX-LOC® Application (980)

- Allows any box to be attached to either side of a metal stud quickly and easily

BOX-LOC® Product Features

- Patented spring steel design
- Installs in seconds without tools
- Mounts on either side of stud
- Repositions easily
- Bracket may be added to any RACO® 4" or 4-11/16" square steel box - simply tap the bracket with a hammer and the barbed hooks hold it in place
- BOX-LOC® is a snap to install. Place the bracket on the open side of the stud first. Slots in the bracket engage the lip of the stud and actually crimp it as you press the bracket on the stud. Barbed hooks dig into the flat side of the stud, locking it in place

Far Side Box Support Application (978)

- Prevents installed box from "floating" in wall cavity

Far Side Box Support Features

- Snaps into hole in back of box
- Easy to cut to fit depth of cavity

**ORDERING INFORMATION - DIMENSIONS****ADJUSTABLE BAR HANGERS**

CATALOG NUMBER	DESCRIPTION	STD. PKG.	UPC BAR CODE	RECOMMENDED MAX. SUPPORT LOAD	
				CEILING FAN (DYNAMIC) LBS.	FIXTURE (STATIC) LBS.
920*	3/8" Stud, adj. 14-1/4" to 22-1/2"	50		No	50
922*	Clip, adj. 14-1/4" to 22-1/2"	50		No	50

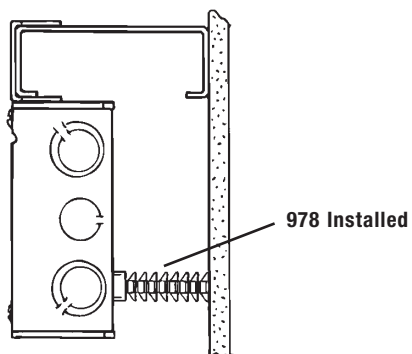
*UL Rated at 16" span on center

BOX-LOC® METAL STUD CLIP

CATALOG NUMBER	DESCRIPTION	STD. PKG.	UPC BAR CODE
980	Spring-steel bracket	50	

FAR SIDE BOX SUPPORT

CATALOG NUMBER	DESCRIPTION	STD. PKG.	UPC BAR CODE
978	1-7/8" Rigid, plastic support	50	—



ACCESSORIES FOR STEEL BOXES

“Old Work Saddle” Application (970RAC)

- The “Old Work Saddle” #970 is designed to be used with 2-1/2" deep switch boxes that have plaster ears

“Old Work Saddle” Product Feature

- #970RAC installs into the 1/2" bottom conduit knockout

GRIP-LOK™ Application (977, 8977, 8977-5)

- The GRIP-LOK™ support is designed to be used with any deep switch box that has plaster ears

GRIP-LOK™ Product Feature

- Simply slip GRIP-LOK™ between box and wall, then bend tabs into the box

Add-A-Depth Applications (976)

- Add-A-Depth ring or “goof-ring” is designed to act as a barrier between combustible wall surfaces and the wiring system
- For single and two-gang device boxes
- There is no UL standard for this product
- Subject to acceptance by an electric inspector


The NEC Code States: 314.20 in Wall or Ceiling

- In walls or ceilings of concrete, tile, or other non-combustible material, boxes shall be installed so that the front edge of the box will not set back of the finished surface more than 1/4 inch (6.35 mm). In walls and ceilings constructed of wood or other combustible material, boxes shall be flush with the finished surface or project there from

Nailing Spur Applications (2709, 2710)

- Protects nonmetallic sheathed cable or raceway type wires running through wood members from accidental nail, screw or drill penetration
- No nails required

Compliance

-  – File E195973, E195968 (not 970RAC)

Applications (969)

- Old work box support clips convert standard switch box to old work type

Product Feature

- Old work switch box clips for use with 1/2" thick standard drywall
- One pair per box



ORDERING INFORMATION - DIMENSIONS

SWITCH BOX SUPPORT “OLD WORK SADDLE”			
CATALOG NUMBER	DESCRIPTION	STD. PKG.	UPC BAR CODE
970RAC	Mounts switch boxes with plaster ears in hollow walls or ceilings	10	

GRIP-LOK™ “OLD WORK” SWITCH BOX SUPPORT			
CATALOG NUMBER	DESCRIPTION	STD. PKG.	UPC BAR CODE
977	Supplied as a pair. Use pair to mount switch box with plaster ears in hollow wall, 1-7/8" long legs	100 pairs	—
8977	Supplied as a pair. Use pair to mount switch box with plaster ears in hollow wall, 1-7/8" long legs	50 pairs	
8977-5	Supplied as a pair. Use pair to mount switch box with plaster ears in hollow wall, 1-7/8" long legs	100 pairs*	

*4 Bundles of 25

SWITCH BOX ACCESSORIES				
CATALOG NUMBER	DESCRIPTION	FOR RACO SWITCH BOXES	STD. PKG.	UPC BAR CODE
961	Plaster Ears - Open Style w/screws	410, 420, 440, 445, 500, 503, 506, 508, 526, 545, 560, 565, 567, 570RAC, 590, 600, 601	100	
962	Plaster Ears - Clipped Style w/screws	150, 400, 591	100	
963	Plaster Ears - 1 Screw Style w/screws	471, 487, 517, 518, 519, 523	100	
964	Old Work Griptite Clip w/screws	523	100	
966	Old Work Tigergrip Clip w/screws	487, 506, 517	100	

OLD WORK SWITCH BOX CLIPS			
CATALOG NUMBER	DESCRIPTION	STD. PKG.	UPC BAR CODE
969	Old work clips for switch box	50	

ADD-A-DEPTH RING EXTENDS SWITCH BOX SET TOO DEEP IN WALL			
CATALOG NUMBER	DESCRIPTION	STD. PKG.	UPC BAR CODE
976	Adjustment range 1/4"-1", Two 1-1/8" screws included	25	

CABLE PROTECTOR			
CATALOG NUMBER	DESCRIPTION	STD. PKG.	UPC BAR CODE
2709	Nailing spurs, 2-9/16" H. x 1-1/2" W. x 1/16" TH. 1/2" Spike	100	
2710	Nailing spurs, 2-9/16" H. x 1-1/2" W. x 1/16" TH. 1/2" Spike	200	—
2709-9	Nailing spurs, 2-9/16" H. x 1-1/2" W. x 1/16" TH. 1/2" Spike	100	—

A60

ACCESSORIES FOR STEEL BOXES

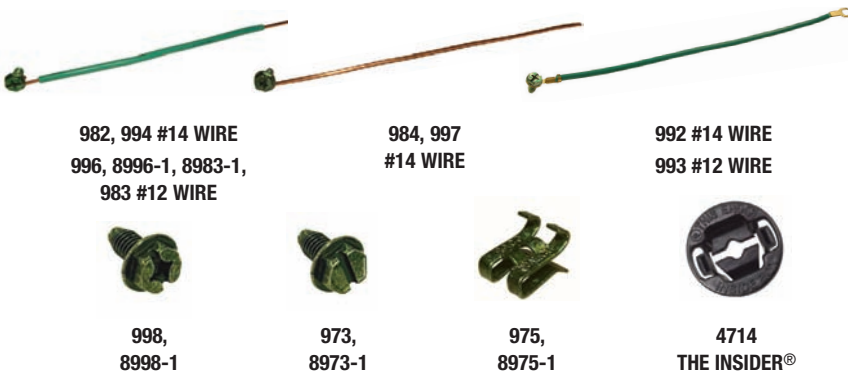
RACO STEEL BOXES & COVERS

Grounding Applications

- Grounding accessories provide a safe electrical path to ground to help prevent shock
- Grounding screws thread into the box and provide a means of fastening the ground conductor
- Ground wires fasten to the box and are then connected to wiring system or wiring device
- RACO® 6" and 8" ground pigtails feature 4-way (slotted, phillips, hex-head) combo 10-32 captive screw
- Ground clips provide a quick method of fastening a ground conductor to the edge of a steel outlet box
- Ground clips are designed for use with solid No. 14, 12, and 10 gauge copper conductor or No. 12 and 10 gauge aluminum conductor
- Only one solid ground wire to be installed per ground clip

Compliance

-  – File E195975 (975, 8975-1)



982, 994 #14 WIRE
996, 8996-1, 8983-1,
983 #12 WIRE

984, 997
#14 WIRE

992 #14 WIRE
993 #12 WIRE



998,
8998-1



973,
8973-1



975,
8975-1



4714
THE INSIDER®

ORDERING INFORMATION - DIMENSIONS

GROUNDING PIGTAILS					
CATALOG NUMBER	DESCRIPTION			STD. PKG.	UPC BAR CODE
	WIRE LENGTH				
	6"	8"			
982	994	#14 Solid insulated copper wire, captive 4-way combo head green dye finish ground screw one end (25 pc. bundles)		1000	—
983	996	#12 Solid insulated copper wire, captive 4-way combo head green dye finish ground screw one end (25 pc. bundles)		1000	—
8983-1	8996-1	#12 Solid insulated copper wire, captive 4-way combo head green dye finish ground screw one end, poly bag (10 pcs per poly bag)		40 bags*	
984	997	#14 Solid bare copper wire, captive 4-way combo head green dye finish ground screw one end (25 pc. bundles)		1000	—
—	992	#14 Stranded insulated copper wire, captive 4-way combo head green dye finish ground screw one end, spade terminal one end (100 pc. bundles)		500	—
—	993	#12 Stranded insulated copper wire, captive 4-way combo head green dye finish ground screw one end, spade terminal one end (100 pc. bundles)		500	—

GROUNDING SCREWS AND CLIPS					
CATALOG NUMBER	DESCRIPTION			STD. PKG.	UPC BAR CODE
998	4-Way combo head green dye finish 3/8" ground screw for 10-32 tapped hole, clam shell package (100 pcs per clam shell)			1000	
8998-1	4-Way combo head green dye finish 3/8" ground screw for 10-32 tapped hole, poly bag (10 pcs. per bag)			50 bags*	
973	Slotted head green dye finish 3/8" ground screw for 10-32 tapped hole, clam shell package (100 pcs per clam shell)			1000	
8973-1	Slotted head green dye finish 3/8" ground screw for 10-32 tapped hole, poly bag (10 pcs. per bag)			50 bags*	
975	Green dye finish ground clip for #14-#10 AWG copper, clam shell package (100 pcs per clam shell)			1000	
8975-1	Green dye finish ground clip for #14-#10 AWG copper, poly bag (10 pcs. per bag)			50 bags*	

*Order standard package bag quantities only, not per piece

 4714, THE INSIDER® will secure nonmetallic sheathed cable in 1/2" KO (See pg. B87)

