

# Liquidtight Conduit Fittings

## Liquidtight Fittings Accessories

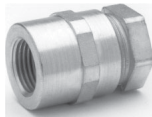
### SELF RETAINING PVC GASKET WITH STEEL RING

UL File no. E-22133



Cat. #	Conduit Size	Unit Qty.	Wt. Lbs. Per 100
SG1	3/8" - 1/2"	100	1
SG2	3/4"	50	2
SG3	1"	50	2
SG4	1 1/4"	25	2
SG5	1 1/2"	25	4
SG6	2"	25	3
SG7	2 1/2"	10	5
SG8	3"	10	10
SG9	3 1/2"	10	12
SG10	4"	10	10
SG11	5"	5	15
SG12	6"	5	22

### COMBINATION COUPLINGS FOR COUPLING LIQUIDTIGHT TO THREADED RIGID/IMC CONDUIT



Cat. #	Conduit Size	Unit Qty.	Wt. Lbs. Per 100
LTR38*	3/8"	25	17
LTR50	1/2"	25	29
LTR75	3/4"	25	33
LTR100	1"	5	59
LTR125	1 1/4"	2	105
LTR150	1 1/2"	2	105
LTR200	2"	1	160

\*For 3/8" Liquidtight to 1/2" Rigid/IMC

### COMBINATION COUPLINGS FOR COUPLING LIQUIDTIGHT TO THREADED RIGID/IMC - GROUNDING TYPE - ALUMINUM LUG

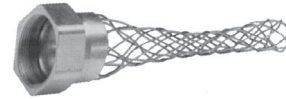


Cat. #	Conduit Size	Lug Size	Unit Qty.	Wt. Lbs. Per 100
LTR38G*	3/8"	#4 - #14	25	24
LTR50G	1/2"	#4 - #14	25	30
LTR75G	3/4"	#4 - #14	25	35
LTR100G	1"	#4 - #14	5	59
LTR125G	1 1/4"	#4 - #14	5	81
LTR150G	1 1/2"	#4 - #14	2	107
LTR200G	2"	#4 - #14	1	162

\*For 3/8" Liquidtight to 1/2" Rigid/IMC

**Note:** For other connector and lug combinations, consult factory.  
Copper lugs are available also. Consult factory for details.

### WIRE MESH GRIPS FOR LIQUIDTIGHT METALLIC CONDUIT FITTINGS



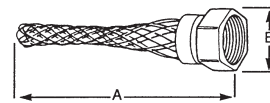
#### Applications:

- Wire mesh grips are used with malleable iron Liquidator liquidtight conduit fittings to prevent conduit pullout due to stress, tension, strain, vibration, or movement.
- Typical applications include the wiring of machine tools, motors, transformers, food processing, equipment, robotics, or any application that requires a flexible liquidtight conduit connection.

#### Materials:

- Nut - Malleable iron, Ring - Aluminum, Mesh - Stainless steel

#### Wire Mesh Grip - Dimensions



Cat. #	Conduit Size	Dimensions		Unit Qty.	Wt. Lbs. Per 100
		A	B		
WMG38	3/8"	6 7/16"	1 1/4"	10	10
WMG50	1/2"	6 1/8"	1 7/16"	10	12
WMG75	3/4"	6 15/16"	1 5/8"	10	17
WMG100	1"	8 7/16"	1 15/16"	10	21
WMG125	1 1/4"	10 3/4"	2 3/8"	2	37
WMG150	1 1/2"	11 13/16"	2 3/4"	2	56
WMG200	2"	14 7/16"	3 5/16"	1	79

For use with malleable iron Liquidator liquidtight conduit fittings.

### REPLACEMENT LIQUIDTIGHT FERRULES

#### For Liquidator Liquidtight Fittings Only



Cat. #	Conduit Size	Unit Qty.
FEA38	3/8"	100
FEA50	1/2"	100
FEA75	3/4"	100
FEA100	1"	100
FEA125	1 1/4"	50
FEA150	1 1/2"	50
FEA200	2"	10
FEA250	2 1/2"	10
FEA300	3"	10
FEA350	3 1/2"	10
FEA400	4"	10