



NEW!

Catalog



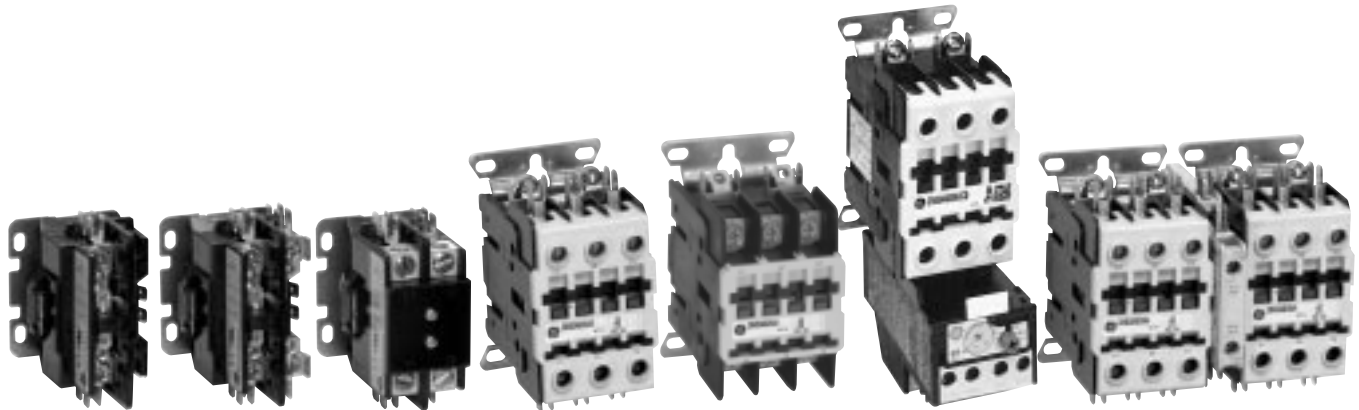
More choices than ever!

GE Definite Purpose Controls

- ***Contactors 20A-150A***
- ***Starters 25A-60A***
- ***2-Speed Controllers 25A-90A***



GE Definite Purpose Controls



Check out these useful DP-related tools on the web!

Find out how GE's new DP contactors can save you time and money while increasing your productivity!

<http://www.geindustrial.com/cwc/products?id=c-dp&type=Product+Information>

Configure a DP contactor, starter or 2-speed controller for your specific application.

Contactor: <http://www.GEindustrial.com/industrialsystems/wizards/dpcontactor/home.htm>

Starter: <http://www.GEindustrial.com/industrialsystems/wizards/dpstarter/home.htm>

2-speed Controller: <http://www.GEindustrial.com/industrialsystems/wizards/dpcontroller/home.htm>

Find the CR453 equivalent of a competitive catalog number (either directly through this address or through EliteNet). <http://catalog.GEindustrial.com/xref.jsp>



Contents

Introduction2

Standard Forms

- DP Contactors, 1-3 poles4
- DP Contactors, 4 poles7
- DP Starters & 2-Speed Controllers8

Factory Modified Forms

- DP Contactors, 1-3 poles
 - CR453C, 20A-40A, Compact 1 & 2 poles12
 - CR453A, 25A-40A, 2 & 3 poles14
 - CR353, 50A-90A, 2 & 3 poles16
 - CR353, 120A-150A, 2 & 3 poles17
- DP Contactors, 4 poles18
- DP Starters & 2-Speed Controllers
 - CR454, 25A-40A19
 - CR354F, 50A-60A21
 - CR455, 25A-40A22

Field Installation Kits24

Replacement Parts26

Technical Data27

Heater Selection29

Outline Drawings30

Bulk Pack Data37

GE's definite purpose controls deliver definite advantages

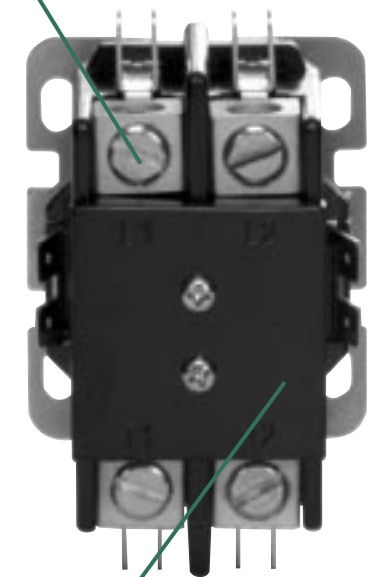
CR453C Compact

20A-40A, 1-pole, 1-pole + shunt & 2-pole

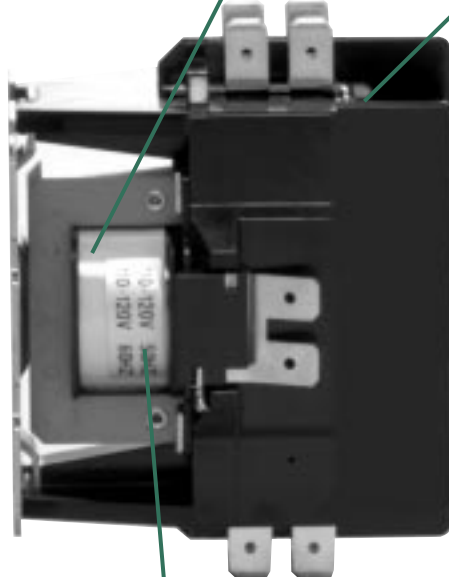
Multiple terminal configurations on line and load terminals allow selection of the right terminals for the job. Choose from hex head screw terminals with slotted/Phillips head or box lug terminals, all with or without quick connect accessory terminals.

Wide array of coil voltages and frequencies allows the compact DP contactors to be adapted to a wide array of applications.

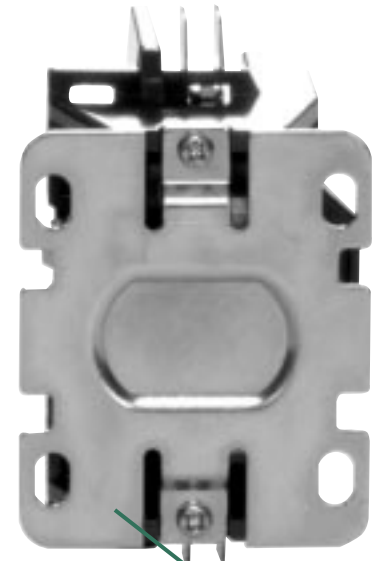
Large silver alloy contacts offer superior life and resistance to welding.



Cover (standard on 40A, optional on 25A-30A) offers increased protection from contaminants.



Low VA "no burn" coil design allows minimum CPT requirement and failsafe reliability during brownout conditions. Features standard 1/4" dual quick connect angled terminals for ease of wiring. Coils are tape wrapped for superior durability and protection from damage.



Universal mounting plate with multiple elongated holes allows the compact contactors to be used with the same mounting holes as existing designs – allowing easy replacement or simple substitution.

Outstanding performance meets all pertinent standards: UL Component Recognized, CSA, CE and ARI 780 – insuring long service life and suitability in the application. All ratings meet 6x, 5x, 4x locked rotor amp rating at 240, 480 and 600V respectively.

Tested for endurance per ARI 780, all contactors meet or exceed for 500,000 mechanical and 200,000 electrical operations.

CR453A

2-pole & 3-pole, 25A-40A

Cover permits visual on/off status indication. Short covers are standard for contactors with all screw terminals. Other contactors feature a standard long cover.

The use of advanced thermoplastics increases contactor performance, allows better appearance, enhances the overall quality and improves the clarity of the terminal markings.

Multiple terminal configurations on line and load terminals allow selection of the right terminals for the job. Choose from hex head screw terminals with slotted/Phillips head or box lug terminals, all with or without quick connect accessory terminals.

Quick connects are integral to the terminal to provide strength and reliability. Silver alloy contacts are strip welded for a superior bond, resulting in long life and weld resistance.

Coils can be replaced without tools and are enclosed for protection from outside contaminants. Their reversible design permits top or bottom wiring without inverting the contactor.

Contactor components form a *pokayoke* assembly. They are keyed so that it is impossible to put them together incorrectly. This makes for easy, foolproof assembly.

New contactors are 20% smaller but still deliver 100% of the performance and quality.

Toolless, snap on accessories make factory and field modifications simple and easy while delivering time savings and late point flexibility.

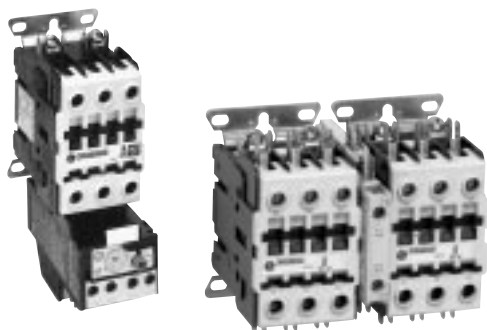
Class 20 and Class 10 overloads are available.

Low VA “no burn” coil design allows minimum CPT sizing requirement and failsafe reliability during brownout conditions. Features standard slotted/Phillips screw with 1/4” dual quick connect terminals for ease of wiring.

Universal mounting plate with multiple elongated holes allow contactors to be used in same mounting holes as existing designs – allowing easy replacement or simple substitution. DIN rail mount is available.

Outstanding performance meets all pertinent standards: UL Component Recognized, CSA, CE and ARI 780 – insuring long service life and suitability in the application. All ratings meet 6x, 5x, 4x locked rotor amp rating at 240, 480 and 600V respectively.

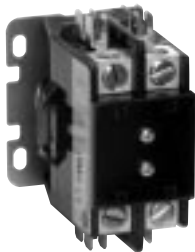
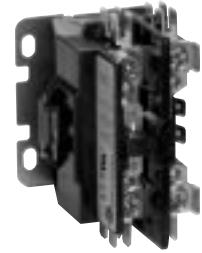
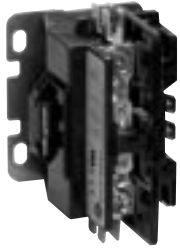
Tested for endurance per ARI 780, all contactors meet or exceed 500,000 mechanical and 200,000 electrical operations.



Definite Purpose Contactors, 1-3 poles

Standard Forms

On standard CR453C contactors, the coil and each power pole are supplied with two 1/4" quick connect terminals. Standard 20-35FLA contactors feature hex screws with #2 Phillips/slotted heads. Standard 40FLA contactors come with box lugs.



CR453C Compact, 20A-40A, 1-pole, 1-pole plus shunted pole & 2-pole

| Full Load Amps | Resistive Amps Per Pole | Locked Rotor Amps, Single Phase, 50/60 Hz | | | Poles | Catalog Number | List Price, GO-10DP |
|----------------|-------------------------|---|------|------|----------------|----------------|---------------------|
| | | 240/277V | 480V | 600V | | | |
| 20 | 30 | 120 | 100 | 80 | 1 | CR453CA1*AA | \$24.00 |
| | | | | | 1 + Shunt | CR453CA3*AA | 29.00 |
| | | | | | 2 | CR453CA2*AA | 32.00 |
| 25 | 35 | 150 | 125 | 100 | 1 | CR453CB1*AA | 30.00 |
| | | | | | 1 + Shunt | CR453CB3*AA | 36.00 |
| | | | | | 2 | CR453CB2*AA | 40.00 |
| 30 | 40 | 180 | 150 | 120 | 1 | CR453CC1*AA | 32.00 |
| | | | | | 1 + Shunt | CR453CC3*AA | 38.00 |
| | | | | | 2 | CR453CC2*AA | 42.00 |
| 35 | 50 | 180 | 150 | 120 | 1 | CR453CD1*AA | 35.00 |
| | | | | | 1 + Shunt | CR453CD3*AA | 44.00 |
| | | 210 | 175 | 140 | 2 [Ⓢ] | CR453CD2*AA | 46.00 |
| 40 | 50 | 240 | 200 | 160 | 2 [Ⓢ] | CR453CE2*BB | 57.00 |

Ⓢ Ratings shown are for 1-phase, 2-pole. See page 24 for 1-phase, 1-pole ratings.

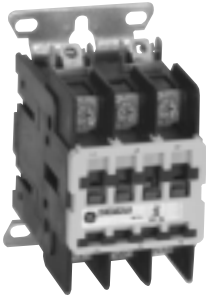
CR453C Compact Coil Selection (Replace * in catalog number with appropriate coil digit)

| Coil Voltage | | Catalog Number Digit |
|--------------|---------|----------------------|
| 60 Hz | 50 Hz | |
| 24 | 24 | H |
| 110-120 | 110 | A |
| 208-240 | 208-220 | B |
| 277 | - | F |

Factory Modified Forms p. 12
 Field Installation Kits p. 24
 Technical Data p. 27
 Outline Drawings p. 30

www.GEindustrial.com

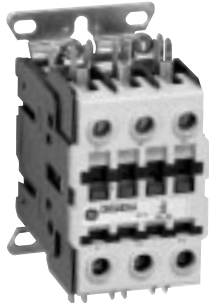
On standard CR453A contactors, the coil and each power pole are supplied with two 1/4" quick connect terminals. Standard 25FLA and 30FLA contactors feature hex screws with #2 Phillips/slotted heads and short covers. Standard 40FLA contactors come with box lugs and long covers.



25A-30A
with screw terminals
and short cover

CR453A, 25A-40A, 2-pole & 3-pole

| Full Load Amps | Resistive Amps Per Pole | Three Phase, 50/60 Hz | | | | | | Single Phase HP, 50/60 Hz | | Poles | Catalog Number | List Price, GO-10DP |
|----------------|-------------------------|-----------------------|-----|------|-----|------|-----|---------------------------|------|-------|----------------|---------------------|
| | | 240V | | 480V | | 600V | | 120V | 240V | | | |
| | | HP | LRA | HP | LRA | HP | LRA | | | | | |
| 25 | 35 | 7.5 | 150 | 10 | 125 | 10 | 100 | 2 | 3 | 2 | CR453AB2*AA | \$47.00 |
| | | | | | | | | | | 3 | CR453AB3*AA | 53.00 |
| 30 | 40 | 10 | 180 | 15 | 150 | 15 | 120 | 2 | 5 | 2 | CR453AC2*AA | 53.00 |
| | | | | | | | | | | 3 | CR453AC3*AA | 59.00 |
| 40 | 50 | 10 | 240 | 20 | 200 | 20 | 160 | 3 | 7.5 | 2 | CR453AD2*BB | 64.00 |
| | | | | | | | | | | 3 | CR453AD3*BB | 71.00 |



40A
with box lugs
and long cover

CR453A Coil Selection (Replace * in catalog number with appropriate coil digit)

| Coil Voltage | | Catalog Number Digit |
|--------------|---------|----------------------|
| 60 Hz | 50 Hz | |
| 12 | 12 | E |
| 24 | 24 | H |
| 110-120 | 110-120 | A |
| 208-240 | 208-240 | B |
| 277 | - | F |
| 440-480 | 380-415 | C |
| 550-600 | 550-600 | D |

Definite Purpose Contactors, 1-3 poles

Standard CR353 contactors in the 50-120FLA ratings are supplied with box lug terminals. Power poles in the 50-90FLA size are supplied with two 1/4" quick connect terminals. Contactors in the 120-150FLA size include control power accessory screws on L1 and L2. Coils are provided with screw connections with a single 1/4" quick connect terminal on the 50 and 60FLA size and two 1/4" quick connect terminals on the 75 and 90 amp size.



CR353, 50-150A 2-pole & 3-pole

| Full Load Amps | Resistive Amps Per Pole | Locked Rotor Amps, Three Phase, 50/60 Hz | | | Poles | Catalog Number | List Price, GO-10DP |
|----------------|-------------------------|--|------|------|-------|----------------|---------------------|
| | | 240V | 480V | 600V | | | |
| 50 | 62 | 300 | 250 | 200 | 2 | CR353FE2B*1 | \$121.00 |
| | | | | | 3 | CR353FE3B*1 | 134.00 |
| 60 | 75 | 360 | 300 | 240 | 2 | CR353FF2B*1 | 141.00 |
| | | | | | 3 | CR353FF3B*1 | 157.00 |
| 75 | 90 | 450 | 375 | 300 | 2 | CR353EG2B*1 | 203.00 |
| | | | | | 3 | CR353EG3B*1 | 225.00 |
| 90 | 90 | 540 | 450 | 360 | 2 | CR353EH2B*1 | 290.00 |
| | | | | | 3 | CR353EH3B*1 | 322.00 |
| 120 | 120 | 720 | 600 | 480 | 2 | CR353GJ2A*1 | 423.00 |
| | | | | | 3 | CR353GJ3A*1 | 460.00 |
| 150 | 150 | 900 | 750 | 600 | 2 | CR353GK2A*1 | 816.00 |
| | | | | | 3 | CR353GK3A*1 | 900.00 |

CR353F, E, G Coil Selection (Replace * in catalog number with appropriate coil digit)

AC Coils

| CR353F, E Coil Voltage | | CR353G Coil Voltage | | Catalog Number Digit |
|------------------------|---------|---------------------|-------|----------------------|
| 60 Hz | 50 Hz | 60 Hz | 50 Hz | |
| 24 | 24 | — | — | H |
| 110-120 | 110-120 | 115-120 | 110 | A |
| 208-240 | 208-240 | 230-240 | 220 | B |
| 277 | — | 277 | — | F |
| 460-480 | 440 | 460-480 | 440 | C |
| 575-600 | 550 | 575-600 | 550 | D |

DC Coils

| CR353F Coil Voltage | CR353E Coil Voltage | Catalog Number Digit | List Price Adder, GO-10DP |
|---------------------|---------------------|----------------------|---------------------------|
| 12 | 12 | P | \$36.00 |
| 24-28 | 24-28 | R | 36.00 |
| 110-125 | 110-125 | S | 36.00 |
| — | 48 | T | 36.00 |

Factory Modified Forms p. 14
 Field Installation Kits p. 24
 Technical Data p. 27
 Outline Drawings p. 30

www.GEindustrial.com

Definite Purpose Contactors, 4 poles

Standard Forms



CR353, 25-40A 4-pole

| Full Load Amps | Resistive Per Pole | Locked Rotor Amps, Three Phase, 50/60 Hz | | | Poles | Catalog Number | List Price, GO-10DP |
|----------------|--------------------|--|------|------|-------|----------------|---------------------|
| | | 240V | 480V | 600V | | | |
| 25 | 35 | 150 | 125 | 100 | 4 | CR353AB4A✖1 | \$71.00 |
| 30 | 40 | 180 | 150 | 120 | 4 | CR353AC4A✖1 | 77.00 |
| 40 | 50 | 240 | 200 | 160 | 4 | CR353AD4B✖1 | 95.00 |

CR353A Coil Selection (Replace ✖ in catalog number with appropriate coil digit)

AC Coils

| Coil Voltage | | Catalog Number Digit |
|--------------|---------|----------------------|
| 60 Hz | 50 Hz | |
| 24 | 24 | H |
| 110-120 | 110-120 | A |
| 208-240 | 208-240 | B |
| 277 | — | F |
| 415-480 | 415-480 | C |
| 575-600 | 550 | D |

DC Coils

| Voltage DC | Catalog Number Digit | List Price Adder, GO-10DP |
|------------|----------------------|---------------------------|
| 12 | P | \$36.00 |
| 24-28 | R | 36.00 |
| 125 | S | 36.00 |

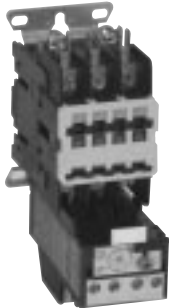
Factory Modified Forms p. 18
 Field Installation Kits p. 24
 Technical Data p. 27
 Outline Drawings p. 30

www.GEindustrial.com

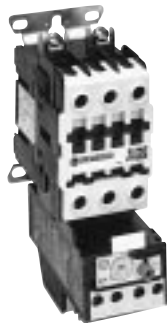
Definite Purpose Starters

Standard Forms

Standard CR454A starters consist of contactors and overload relays (for starters with holding interlocks, see factory modified forms on page 19). The coil and each power pole are supplied with two 1/4" quick connect terminals. Standard 25FLA and 30FLA starters feature hex screws with #2 Phillips/slotted heads and short covers. Standard 40FLA starters come with box lugs and long covers.



25A-30A
with screw terminals
and short cover



40A
with box lugs
and long cover

CR454, 25-40A, 3-pole

| Full Load Amps | Resistive Per Pole | Three Phase, 50/60 Hz | | | | | | Single Phase HP ① | | Poles | Catalog Number | List Price, GO-10DPA |
|----------------|--------------------|-----------------------|-----|------|-----|------|-----|-------------------|------|-------|----------------|----------------------|
| | | 240V | | 480V | | 600V | | 115V | 230V | | | |
| | | HP | LRA | HP | LRA | HP | LRA | | | | | |
| 25 | 35 | 7.5 | 150 | 10 | 125 | 10 | 100 | 2 | 3 | 3 | CR454AB3*A# | \$78.00 |
| 30 | 40 | 10 | 180 | 15 | 150 | 15 | 120 | 2 | 5 | 3 | CR454AC3*A# | 84.00 |
| 40 | 50 | 10 | 240 | 20 | 200 | 20 | 160 | 3 | 7.5 | 3 | CR454AD3*B# | 96.00 |

① For single-phase starters, wire 2 poles in series.

CR454 Coil Selection (Replace * in catalog number with appropriate coil digit)

| Coil Voltage | | Catalog Number Digit |
|--------------|---------|----------------------|
| 60 Hz | 50 Hz | |
| 12 | 12 | E |
| 24 | 24 | H |
| 110-120 | 110-120 | A |
| 208-240 | 208-240 | B |
| 277 | - | F |
| 440-480 | 380-415 | C |
| 550-600 | 550-600 | D |

Overload Selection (Replace # in catalog number with appropriate overload digit). Select range corresponding to full load amps. Overloads are Class 20, ambient compensated. For starters with lower overload amp ranges, see page 19.

| Overload Amp Range | Catalog Number Digit | List Price Adder, GO-10DPA | Overload Amp Range | Catalog Number Digit | List Price Adder, GO-10DPA |
|--------------------|----------------------|----------------------------|--------------------|----------------------|----------------------------|
| 2.5-4.1 | K | \$55.00 | 14.5-18 | S | \$57.00 |
| 4-6.3 | L | 55.00 | 17.5-22 | T | 57.00 |
| 5.5-8.5 | M | 57.00 | 21-26 | U | 57.00 |
| 8-12 | N | 57.00 | 25-32 | V | 63.00 |
| 10-16 | P | 57.00 | 30-40 | W | 78.00 |

Factory Modified Forms p. 19
Field Installation Kits p. 24
Technical Data p. 27
Outline Drawings p. 30

www.GEindustrial.com



CR354, 50A-60A, 2-pole & 3-pole

| Full Load Amps | Locked Rotor Amps | | | Phase | Poles | Overload Heaters | NO Aux. Contact (10A, 250Vac) | Standard Overload ^① | List Price, GO-10DPA | Ambient Compensated Overload ^① | List Price, GO-10DPA |
|----------------|-------------------|------|------|-------|-------|------------------|-------------------------------|--------------------------------|----------------------|---|----------------------|
| | 240V | 480V | 600V | | | | | | | | |
| 50 | 300 | 250 | 200 | 1 | 2 | 1 | — | CR354FE2B*3 | \$242.00 | CR354FE2B*4 | \$258.00 |
| | | | | | | | 1 | CR354FE2B*3B | 254.00 | CR354FE2B*4B | 270.00 |
| | | | | 3 | 3 | 3 | — | CR354FE3B*3 | 336.00 | CR354FE3B*4 | 352.00 |
| | | | | | | | 1 | CR354FE3B*3B | 348.00 | CR354FE3B*4B | 364.00 |
| 60 | 360 | 300 | 240 | 1 | 2 | 1 | — | CR354FF2B*3 | 282.00 | CR354FF2B*4 | 298.00 |
| | | | | | | | 1 | CR354FF2B*3B | 294.00 | CR354FF2B*4B | 310.00 |
| | | | | 3 | 3 | 3 | — | CR354FF3B*3 | 393.00 | CR354FF3B*4 | 409.00 |
| | | | | | | | 1 | CR354FF3B*3B | 405.00 | CR354FF3B*4B | 421.00 |

① For heater selection, see page 29.

CR354 Coil Selection (Replace * in catalog number with appropriate coil digit)

| Coil Voltage | | Catalog Number Digit |
|--------------|---------|----------------------|
| 60 Hz | 50 Hz | |
| 24 | 24 | H |
| 110-120 | 110-120 | A |
| 208-240 | 208-240 | B |
| 277 | — | F |
| 415-480 | 415-480 | C |
| 575-600 | 550 | D |

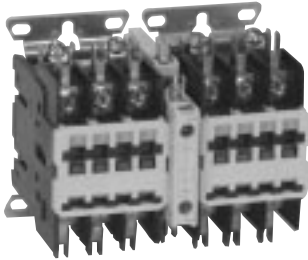
Factory Modified Forms p. 19
 Field Installation Kits p. 24
 Technical Data p. 27
 Heaters p. 29
 Outline Drawings p. 30

Definite Purpose 2-Speed Controllers

Standard Forms

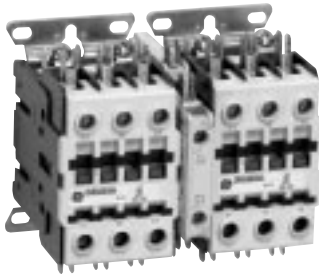
Standard CR455A 2-speed controllers consist of two contactors, a mechanical interlock and partially wired cross-electrical interlocks. The coil and each power pole are supplied with two 1/4" quick connect terminals. Standard 25FLA and 30FLA 2-speed controllers feature hex screws with #2 Phillips/slotted heads and short covers. Standard 40FLA 2-speed controllers come with box lugs and long covers.

CR455, 25-40A, 2-pole & 3-pole



25A-30A
with screw terminals
and short covers

| Full Load Amps | Three Phase, 50/60 Hz | | | | | | Single Phase HP, 50/60Hz | | Poles | Catalog Number | List Price, GO-10DPA |
|----------------|-----------------------|-----|------|-----|------|-----|--------------------------|------|-------|---------------------------|----------------------|
| | 240V | | 480V | | 600V | | 120V | 240V | | | |
| | HP | LRA | HP | LRA | HP | LRA | | | | | |
| 25 | 7.5 | 150 | 10 | 125 | 10 | 100 | 2 | 3 | 2-3 | CR455AB2* A AD | \$190.00 |
| | | | | | | | | | 3-3 | CR455AB3* A AD | 202.00 |
| 30 | 10 | 180 | 15 | 150 | 15 | 120 | 2 | 5 | 2-3 | CR455AC2* A AD | 202.00 |
| | | | | | | | | | 3-3 | CR455AC3* A AD | 214.00 |
| 40 | 10 | 240 | 20 | 200 | 20 | 160 | 3 | 7.5 | 2-3 | CR455AD2* B BD | 225.00 |
| | | | | | | | | | 3-3 | CR455AD3* B BD | 239.00 |

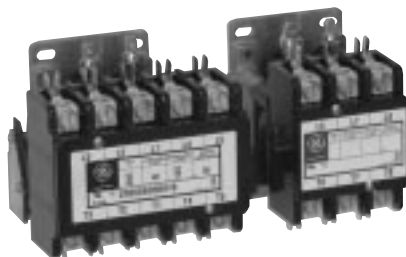


40A
with box lugs
and long covers

CR455 Coil Selection (Replace * in catalog number with appropriate coil digit)

| Coil Voltage | | Catalog Number Digit |
|--------------|---------|----------------------|
| 60 Hz | 50 Hz | |
| 12 | 12 | E |
| 24 | 24 | H |
| 110-120 | 110-120 | A |
| 208-240 | 208-240 | B |
| 277 | - | F |
| 440-480 | 380-415 | C |
| 550-600 | 550-600 | D |

CR355 Two-Speed Controllers, 25A-40A, 4-4 & 5-3 pole

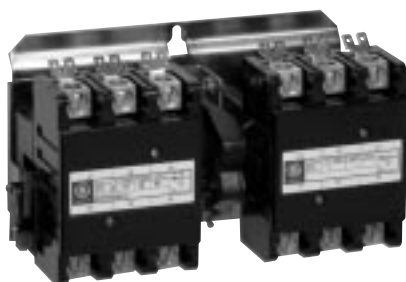


| Full Load Amps | Locked Rotor Amps | | | Poles | Catalog Number | List Price, GO-10DPA |
|----------------|-------------------|------|------|-------|----------------|----------------------|
| | 240V | 480V | 600V | | | |
| 25 | 150 | 125 | 100 | 4-4 | CR355AB4A*1B | \$232.00 |
| | | | | 5-3 | CR355AB5A*1B | 232.00 |
| 30 | 180 | 150 | 120 | 4-4 | CR355AC4A*1B | 245.00 |
| | | | | 5-3 | CR355AC5A*1B | 245.00 |
| 40 | 240 | 200 | 160 | 4-4 | CR355AD4B*1B | 279.00 |
| | | | | 5-3 | CR355AD5B*1B | 279.00 |

CR355 Coil Selection (Replace * in catalog number with appropriate coil digit)

| Coil Voltage | | Catalog Number Digit |
|--------------|---------|----------------------|
| 60 Hz | 50 Hz | |
| 24 | 24 | H |
| 110-120 | 110-120 | A |
| 208-240 | 208-240 | B |

CR355 Two-Speed Controllers, 50A-90A



| Full Load Amps | Locked Rotor Amps | | | Poles | Catalog Number | List Price, GO-10DPA |
|----------------|-------------------|------|------|-------|----------------|----------------------|
| | 240V | 480V | 600V | | | |
| 50 | 300 | 250 | 200 | 2-3 | CR355EE2B*1C | \$295.00 |
| | | | | 3-3 | CR355EE3B*1C | 309.00 |
| 60 | 360 | 300 | 240 | 2-3 | CR355EF2B*1C | 338.00 |
| | | | | 3-3 | CR355EF3B*1C | 354.00 |
| 75 | 450 | 375 | 300 | 2-3 | CR355EG2B*1C | 467.00 |
| | | | | 3-3 | CR355EG3B*1C | 490.00 |
| 90 | 540 | 450 | 360 | 2-3 | CR355EH2B*1C | 652.00 |
| | | | | 3-3 | CR355EH3B*1C | 684.00 |

CR355 Coil Selection (Replace * in catalog number with appropriate coil digit)

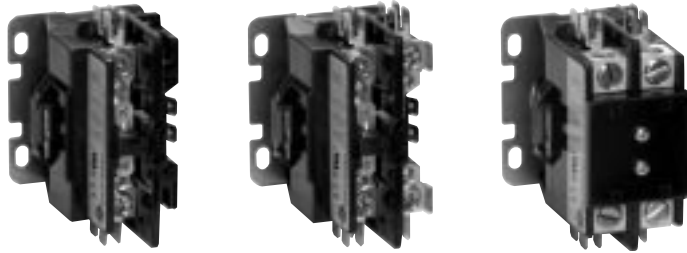
| CR355EE, EF Coil Voltage | | CR355EG, EH Coil Voltage | | Catalog Number Digit |
|--------------------------|---------|--------------------------|---------|----------------------|
| 60 Hz | 50 Hz | 60 Hz | 50 Hz | |
| 24 | 24 | 24 | 24 | H |
| 110-120 | 110-120 | 110-120 | 110-120 | A |
| 208-240 | 208-240 | 208-240 | 208-240 | B |

Field Installation Kits p. 24
 Technical Data p. 27
 Outline Drawings p. 30

Definite Purpose Contactors, 1-3 poles

Factory Modified Forms

CR453C Definite Purpose Contactors, 20A-40A, 1-pole & 2-pole Compact Design



Select contactor from the main table and complete the catalog number by inserting the digits corresponding to required and optional specifications from the tables below. *All factory modified forms require a minimum order of 200 and additional multiples of 20. See page 37 for bulk pack details.*

1-pole & 1-pole plus shunted pole

| Full Load Amps | Resistive Amps Per Pole | Locked Rotor Amps (1 Phase - Per Pole) | | | Poles | Catalog Number (Complete by adding digits from tables below*) | | | | | | | | | | | | | | List Price, GO-10DP | |
|----------------|-------------------------|--|------|------|-----------|---|---|---|---|---|---|---|---|---|----|----|---------|----|----|---------------------|---------|
| | | 240V/277V | 480V | 600V | | Required Digits | | | | | | | | | | | Options | | | | |
| | | | | | | 1 | 2 | 3 | 4 | 5 | 6 | 7 | 8 | 9 | 10 | 11 | 12 | 13 | 14 | | |
| 20 | 30 | 120 | 100 | 80 | 1 | C | R | 4 | 5 | 3 | C | A | 1 | | | | | | | | \$24.00 |
| | | | | | 1 + Shunt | C | R | 4 | 5 | 3 | C | A | 3 | | | | | | | | |
| 25 | 35 | 150 | 125 | 100 | 1 | C | R | 4 | 5 | 3 | C | B | 1 | | | | | | | | 30.00 |
| | | | | | 1 + Shunt | C | R | 4 | 5 | 3 | C | B | 3 | | | | | | | | |
| 30 | 40 | 180 | 150 | 120 | 1 | C | R | 4 | 5 | 3 | C | C | 1 | | | | | | | | 32.00 |
| | | | | | 1 + Shunt | C | R | 4 | 5 | 3 | C | C | 3 | | | | | | | | |
| 35 | 50 | 180 | 150 | 120 | 1 | C | R | 4 | 5 | 3 | C | D | 1 | | | | | | | | 35.00 |
| | | | | | 1 + Shunt | C | R | 4 | 5 | 3 | C | D | 3 | | | | | | | | |

*If no options are required, catalog number is complete after 11 digits.

2-pole

| Full Load Amps | Resistive Amps Per Pole | Locked Rotor Amps (1 Phase - 2 Pole) / (1 Phase - Per Pole) | | | Poles | Catalog Number (Complete by adding digits from tables below*) | | | | | | | | | | | | | | List Price, GO-10DP |
|----------------|-------------------------|---|---------|---------|-------|---|---|---|---|---|---|---|---|---|----|----|---------|----|----|---------------------|
| | | 240V/277V | 480V | 600V | | Required Digits | | | | | | | | | | | Options | | | |
| | | | | | | 1 | 2 | 3 | 4 | 5 | 6 | 7 | 8 | 9 | 10 | 11 | 12 | 13 | 14 | |
| 20 | 30 | 120/120 | 100/100 | 80/80 | C | R | 4 | 5 | 3 | C | A | 2 | | | | | | | | \$32.00 |
| 25 | 35 | 150/150 | 125/125 | 100/100 | C | R | 4 | 5 | 3 | C | B | 2 | | | | | | | | 40.00 |
| 30 | 40 | 180/180 | 150/150 | 120/120 | C | R | 4 | 5 | 3 | C | C | 2 | | | | | | | | 42.00 |
| 35 | 50 | 210/180 | 175/150 | 140/120 | C | R | 4 | 5 | 3 | C | D | 2 | | | | | | | | 46.00 |
| 40 | 50 | 240/180 | 200/150 | 160/120 | C | R | 4 | 5 | 3 | C | E | 2 | | | | | | | | 51.00 |

*If no options are required, catalog number is complete after 11 digits.

Standard Forms p. 4
 Field Installation Kits p. 24
 Technical Data p. 27
 Outline Drawings p. 30

Note: All factory modified forms require a minimum order of 200 and additional multiples of 20.
See page 37 for bulk pack details.

Digit 9 Coil Selection

| Coil Voltage | | Catalog Number Digit 9 |
|--------------|---------|---------------------------|
| 60 Hz | 50 Hz | |
| 24 | 24 | H |
| 110-120 | 110 | A |
| 208-240 | 208-220 | B |
| 277 | – | F |

Digit 10 Line Terminals

| Catalog Number Digit 10 | Terminal Type | List Price Adder, GO-10DP | |
|----------------------------|---------------------------------------|---------------------------|------------------------|
| | | 1-pole | 1-pole + shunt, 2-pole |
| A | Screw w/ 1/4" Quick Connect | \$0.00 | \$0.00 |
| B | Lug w/ 1/4" Quick Connect | 1.50 | 3.00 |
| C | Screw without Quick Connect terminals | 0.00 | 0.00 |
| D | Lug without Quick Connect terminals | 1.50 | 3.00 |
| L | Sems Clamp w/ 1/4" Quick Connect | 1.00 | 2.00 |
| M | Sems Clamp | 1.00 | 2.00 |

Digit 11 Load Terminals

| Catalog Number Digit 11 | Terminal Type | List Price Adder, GO-10DP | |
|----------------------------|---------------------------------------|---------------------------|------------------------|
| | | 1-pole | 1-pole + shunt, 2-pole |
| A | Screw w/ 1/4" Quick Connect | \$0.00 | \$0.00 |
| B | Lug w/ 1/4" Quick Connect | 1.50 | 3.00 |
| C | Screw without Quick Connect terminals | 0.00 | 0.00 |
| D | Lug without Quick Connect terminals | 1.50 | 3.00 |
| L | Sems Clamp w/ 1/4" Quick Connect | 1.00 | 2.00 |
| M | Sems Clamp | 1.00 | 2.00 |

Digit 12 Cover

| Catalog Number Digit 12 | Cover option | List Price Adder, GO-10DP |
|-------------------------|---------------------------------------|---------------------------|
| A* | Standard (cover on 40FLA is standard) | \$0.00 |
| C | Add cover to 20-35FLA | 2.00 |

Digit 13 Nameplate Marking

For special nameplate markings, contact factory.

| Catalog Number Digit 13 | Nameplate Marking | List Price Adder, GO-10DP |
|-------------------------|---------------------------------------|---------------------------|
| A* | Standard (cover on 40FLA is standard) | \$0.00 |

Digit 14 Packaging

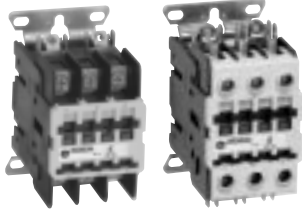
| Catalog Number Digit 14 | Cover option | List Price Adder, GO-10DP |
|-------------------------|--|---------------------------|
| Blank | Single Pack | \$0.00 |
| P | Bulk Pack (available in multiples of 200; contact factory for delivery schedules; see page 37 for bulk pack details) | 0.00 |

* If this will be the final digit in your selection, omit from catalog number.

| | |
|-------------------------|-------|
| Standard Forms | p. 4 |
| Field Installation Kits | p. 24 |
| Technical Data | p. 27 |
| Outline Drawings | p. 30 |

Definite Purpose Contactors, 1-3 poles

Factory Modified Forms



Unless otherwise modified in Digit 15, contactors with line and load screw terminals will be supplied with short covers, and all others will be supplied with long covers.

CR453A Definite Purpose Contactors, 25A-40A, 2-pole & 3-pole

Select contactor from the main table and complete the catalog number by inserting the digits corresponding to required and optional specifications from the tables below. *Factory modified forms require minimum orders/additional multiples. See page 37 for bulk pack details.*

| Full Load Amps | Resistive Amps Per Pole | Three Phase, 50/60 Hz | | | | | | Single Phase HP, 50/60 Hz | | Poles | Catalog Number (Complete by adding digits from tables below*) | | | | | | | | | | | | | | | | | List Price, GO-10DP | | | |
|----------------|-------------------------|-----------------------|-----|------|-----|------|-----|---------------------------|------|-------|--|---|---|---|---|---|---|---------|---|----|----|----|----|----|----|----|----|---------------------|--|---------|-------|
| | | 240V | | 480V | | 600V | | 120V | 240V | | Required Digits | | | | | | | Options | | | | | | | | | | | | | |
| | | HP | LRA | HP | LRA | HP | LRA | | | | 1 | 2 | 3 | 4 | 5 | 6 | 7 | 8 | 9 | 10 | 11 | 12 | 13 | 14 | 15 | 16 | 17 | | | | |
| 25 | 35 | 7.5 | 150 | 10 | 125 | 10 | 100 | 2 | 3 | 2 | C | R | 4 | 5 | 3 | A | B | 2 | | | | | | | | | | | | \$47.00 | |
| | | | | | | | | | | 3 | C | R | 4 | 5 | 3 | A | B | 3 | | | | | | | | | | | | | |
| 30 | 40 | 10 | 180 | 15 | 150 | 15 | 120 | 2 | 5 | 2 | C | R | 4 | 5 | 3 | A | C | 2 | | | | | | | | | | | | | 53.00 |
| | | | | | | | | | | 3 | C | R | 4 | 5 | 3 | A | C | 3 | | | | | | | | | | | | | |
| 40 | 50 | 10 | 240 | 20 | 200 | 20 | 160 | 3 | 7.5 | 2 | C | R | 4 | 5 | 3 | A | D | 2 | | | | | | | | | | | | | 61.00 |
| | | | | | | | | | | 3 | C | R | 4 | 5 | 3 | A | D | 3 | | | | | | | | | | | | | |

*If no options are required, catalog number is complete after 11 digits.

Digit 9 Coil Selection

| Coil Voltage | | Catalog Number Digit 9 |
|--------------|---------|------------------------|
| 60 Hz | 50 Hz | |
| 12 | 12 | E |
| 24 | 24 | H |
| 110-120 | 110-120 | A |
| 208-240 | 208-240 | B |
| 277 | - | F |
| 440-480 | 380-415 | C |
| 550-600 | 550-600 | D |

Digit 10 Line Terminals

| Catalog Number Digit 10 | Terminal Type | List Price Adder, GO-10DP | | | |
|-------------------------|---------------------------------------|---------------------------|--------------|-----------------|--------------|
| | | 2-pole, 25-30FLA | 2-pole 40FLA | 3-pole 25-30FLA | 3-pole 40FLA |
| A | Screw w/ 1/4" Quick Connect | \$0.00 | \$1.50 | \$0.00 | \$2.25 |
| B | Lug w/ 1/4" Quick Connect | 1.50 | 1.50 | 2.25 | 2.25 |
| C | Screw without Quick Connect terminals | 0.00 | 1.50 | 0.00 | 2.25 |
| D | Lug without Quick Connect terminals | 1.50 | 1.50 | 2.25 | 2.25 |
| L | Sems Clamp w/ 1/4" Quick Connect | 2.50 | 2.50 | 3.75 | 3.75 |
| M | Sems Clamp | 2.00 | 2.00 | 3.00 | 3.00 |

Digit 11 Load Terminals

| Catalog Number Digit 11 | Terminal Type | List Price Adder, GO-10DP | | | |
|-------------------------|---------------------------------------|---------------------------|--------------|-----------------|--------------|
| | | 2-pole, 25-30FLA | 2-pole 40FLA | 3-pole 25-30FLA | 3-pole 40FLA |
| A | Screw w/ 1/4" Quick Connect | \$0.00 | \$1.50 | \$0.00 | \$2.25 |
| B | Lug w/ 1/4" Quick Connect | 1.50 | 1.50 | 2.25 | 2.25 |
| C | Screw without Quick Connect terminals | 0.00 | 1.50 | 0.00 | 2.25 |
| D | Lug without Quick Connect terminals | 1.50 | 1.50 | 2.25 | 2.25 |
| L | Sems Clamp w/ 1/4" Quick Connect | 2.50 | 2.50 | 3.75 | 3.75 |
| M | Sems Clamp | 2.00 | 2.00 | 3.00 | 3.00 |

Standard Forms p. 5
 Field Installation Kits p. 24
 Technical Data p. 27
 Outline Drawings p. 30

Factory modified forms require minimum orders/additional multiples.
See page 37 for bulk pack details.

Digit 12 Terminal Identification

| Catalog Number Digit 12 | Special Mark | List Price Adder, GO-10DP |
|-------------------------|---|---------------------------|
| A* | Standard Top: L1, L2, L3 Bottom: T1, T2, T3 | \$0.00 |
| B | Inverse Top: T1, T2, T3 Bottom: L1, L2, L3 | 1.00 |
| C | Reverse Top: L3, L2, L1 Bottom: T3, T2, T1 | 1.00 |
| D | No markings | 1.00 |

Digits 13 & 14 Auxiliary Contacts

| Volts | Catalog Number Digits 13 & 14 | Contacts | List Price Adder, GO-10DP |
|-------|-------------------------------|--------------------------|---------------------------|
| 250 | 00* | None (standard) | \$0.00 |
| | 1L | 1 SPDT Left | 16.00 |
| | 1R | 1 SPDT Right | 16.00 |
| | 2L | 2 SPDT Left | 30.00 |
| | 2R | 2 SPDT Right | 30.00 |
| | 2S | 1 SPDT Left & Right | 32.00 |
| 600 | 4S | 2 SPDT Left & Right | 60.00 |
| | 10 | 1 NO-NC Left | 40.00 |
| | 01 | 1 NO-NC Right | 40.00 |
| | 11 | 1 NO-NC Left & Right | 80.00 |
| | 12 | 1 NO-NC Left, 2 NO Right | 80.00 |
| | 20 | 2 NO Left | 40.00 |
| | 02 | 2 NO Right | 40.00 |
| | 22 | 2 NO Left & Right | 80.00 |
| 21 | 2 NO Left, 1 NO-NC Right | 80.00 | |

Digit 15 Modifications

| Catalog Number Digit 15 | Modification | List Price Adder, GO-10DP |
|-------------------------|---|---------------------------|
| A* | None | \$0.00 |
| B | Coil rotated (terminals on loadside) | 2.00 |
| C | DIN rail clip option | 7.00 |
| D | No cover (not available on box lug forms) | 0.00 |
| G | Coil rotated & DIN rail clip option | 9.00 |
| J | Long cover on screw terminal forms | 2.00 |
| K | Short cover on Sems clamp forms | 1.00 |

Digit 16 Nameplate Marking

For special nameplate markings, contact factory.

| Catalog Number Digit 16 | Specials | List Price Adder, GO-10DP |
|-------------------------|-----------------|---------------------------|
| A* | None (standard) | \$0.00 |

Digit 17 Packaging

| Catalog Number Digit 17 | Specials | List Price Adder, GO-10DP |
|-------------------------|--|---------------------------|
| Blank | Single | \$0.00 |
| P | Bulk pack (requires minimum order quantities; see page 37 for details) | 0.00 |

| | |
|-------------------------|-------|
| Standard Forms | p. 5 |
| Field Installation Kits | p. 24 |
| Technical Data | p. 27 |
| Outline Drawings | p. 30 |

* If this will be the final digit(s) in your selection, omit from catalog number.

Definite Purpose Contactors, 1-3 poles

Factory Modified Forms



CR353 Definite Purpose Contactors, 50A-90A, 2-pole & 3-pole

Select contactor from the main table and complete the catalog number by inserting the digits corresponding to required and optional specifications from the tables below. *Note: minimum order quantities apply to all factory modified forms. Contact factory for details.*

| Full Load Amps | Resistive Amps Per Pole | Locked Rotor Amps, Three Phase, 50/60 Hz | | | Poles | Catalog Number (Complete by adding digits from tables below*) | | | | | | | | | | | | | List Price, GO-10DP |
|----------------|-------------------------|--|------|------|-------|--|---|---|---|---|---|---|---|---|----|---------|----|----|---------------------|
| | | 240V | 480V | 600V | | Required Digits | | | | | | | | | | Options | | | |
| | | | | | | 1 | 2 | 3 | 4 | 5 | 6 | 7 | 8 | 9 | 10 | 11 | 12 | 13 | |
| 50 | 62 | 300 | 250 | 200 | 2 | C | R | 3 | 5 | 3 | F | E | 2 | | | | | | \$121.00 |
| | | | | | 3 | C | R | 3 | 5 | 3 | F | E | 3 | | | | | | |
| 60 | 75 | 360 | 300 | 240 | 2 | C | R | 3 | 5 | 3 | F | F | 2 | | | | | | 141.00 |
| | | | | | 3 | C | R | 3 | 5 | 3 | F | F | 3 | | | | | | |
| 75 | 90 | 450 | 375 | 300 | 2 | C | R | 3 | 5 | 3 | E | G | 2 | | | | | | 203.00 |
| | | | | | 3 | C | R | 3 | 5 | 3 | E | G | 3 | | | | | | |
| 90 | 90 | 540 | 450 | 360 | 2 | C | R | 3 | 5 | 3 | E | H | 2 | | | | | | 290.00 |
| | | | | | 3 | C | R | 3 | 5 | 3 | E | H | 3 | | | | | | |

*If no options are required, catalog number is complete after 10 digits.

Digit 9 Line and Load Terminals

| Catalog Number Digit 9 | Terminal Type | List Price Adder, GO-10DP |
|------------------------|-------------------------------------|---------------------------|
| A | Screw w/ Quick Connect | \$0.00 |
| B | Box Lug w/ Quick Connect (standard) | 0.00 |
| C | Screw | 0.00 |
| D | Lug | 0.00 |

Digit 10 Coil Selection

AC Coils

| Coil Voltage | | Catalog Number Digit 10 |
|--------------|---------|-------------------------|
| 60 Hz | 50 Hz | |
| 24 | 24 | H |
| 110-120 | 110-120 | A |
| 208-240 | 208-240 | B |
| 277 | — | F |
| 460-480 | 440 | C |
| 575-600 | 550 | D |

DC Coils

| CR353F Coil Voltage | CR353E Coil Voltage | Catalog Number Digit 10 | List Price Adder, GO-10DP |
|---------------------|---------------------|-------------------------|---------------------------|
| — | 12 | P | \$36.00 |
| 24-28 | 24-28 | R | 36.00 |
| — | 115 | S | 36.00 |
| — | 48 | T | 36.00 |

* If this will be the final digit(s) in your selection, omit from catalog number.

Digit 11 Terminal Markings

| Catalog Number Digit 11 | Terminal Markings | List Price Adder, GO-10DP |
|-------------------------|--|---------------------------|
| 0* | No terminal markings | \$1.00 |
| 1 | Line (L) at top, Load (T) at bottom (Standard) | 0.00 |
| 2 | Load (T) at top, Line (L) at bottom (Inverted) | 1.00 |

Digit 12 Auxiliary Contacts

| Catalog Number Digit 12 | Auxiliary Contacts | List Price Adder, GO-10DP |
|-------------------------|-------------------------------------|---------------------------|
| A* | None (standard) | \$0.00 |
| B | 10FLA, 250Vac SPDT on left side | 16.00 |
| C | 10FLA, 250Vac, SPDT left & right | 32.00 |
| D ² | 10FLA, 600Vac, 1NO-1NC on left side | 36.00 |

² Not available on CR353F

Digit 13 Nameplate Markings

For special nameplate markings, contact factory.

| Catalog Number Digit 13 | Specials | List Price Adder, GO-10DP |
|-------------------------|-----------------|---------------------------|
| Blank | None (standard) | \$0.00 |

Standard Forms p. 6
 Field Installation Kits p. 24
 Technical Data p. 27
 Outline Drawings p. 30



CR353 Definite Purpose Contactors, 120A-150A, 2-pole & 3-pole

Select contactor from the main table and complete the catalog number by inserting the digits corresponding to required and optional specifications from the tables below. *Note: minimum order quantities apply to all factory modified forms. Contact factory for details.*

| Full Load Amps | Resistive Amps Per Pole | Locked Rotor Amps, Three Phase, 50/60 Hz | | | Poles | Catalog Number (Complete by adding digits from tables below*) | | | | | | | | | | | | | List Price, GO-10DP |
|----------------|-------------------------|--|------|------|-------|--|---|---|---|---|---|---|---|---|----|----|---------|----|---------------------|
| | | 240V | 480V | 600V | | Required Digits | | | | | | | | | | | Options | | |
| | | | | | | 1 | 2 | 3 | 4 | 5 | 6 | 7 | 8 | 9 | 10 | 11 | 12 | 13 | |
| 120 | 120 | 720 | 600 | 480 | 2 | C | R | 3 | 5 | 3 | G | J | 2 | A | | 1 | | | \$423.00 |
| | | | | | 3 | C | R | 3 | 5 | 3 | G | J | 3 | A | | 1 | | | 460.00 |
| 150 | 150 | 900 | 750 | 600 | 2 | C | R | 3 | 5 | 3 | G | K | 2 | A | | 1 | | | 816.00 |
| | | | | | 3 | C | R | 3 | 5 | 3 | G | K | 3 | A | | 1 | | | 900.00 |

*If no options are required, catalog number is complete after 11 digits.

Digit 10 Coil Selection

| Coil Voltage | | Catalog Number Digit 10 |
|--------------|-------|-------------------------|
| 60 Hz | 50 Hz | |
| 115-120 | 110 | A |
| 230-240 | 220 | B |
| 277 | — | F |
| 460-480 | 440 | C |
| 575-600 | 550 | D |

Digit 12 Auxiliary Contacts

| Catalog Number Digit 12 | Auxiliary Contacts | List Price Adder, GO-10DP |
|-------------------------|-------------------------------------|---------------------------|
| A* | None | \$0.00 |
| B | 10FLA, 600Vac, 1NO on left side | 32.00 |
| C | 10FLA, 600Vac, 1NC on left side | 32.00 |
| D | 10FLA, 600Vac, 1NO-1NC on left side | 60.00 |

*If this will be the final digit in your selection, omit from catalog number.

Digit 13 Nameplate Marking

For special nameplate markings, contact factory.

| Catalog Number Digit 13 | Specials | List Price Adder, GO-10DP |
|-------------------------|-----------------|---------------------------|
| Blank | None (standard) | \$0.00 |

Definite Purpose Contactors, 4 poles

Factory Modified Forms



CR353 Definite Purpose Contactors, 25A-40A, 4-pole

Select contactor from the main table and complete the catalog number by inserting the digits corresponding to required and optional specifications from the tables below. *Note: minimum order quantities apply to all factory modified forms. Contact factory for details.*

| Full Load Amps | Resistive Amps Per Pole | Locked Rotor Amps, Three Phase, 50/60 Hz | | | Poles | Catalog Number (Complete by adding digits from tables below*) | | | | | | | | | | | | | List Price, GO-10DP | | | | | |
|----------------|-------------------------|--|------|------|-------|--|---|---|---|---|---|---|---|---|----|---------|----|----|---------------------|--|--|--|--|---------|
| | | 240V | 480V | 600V | | Required Digits | | | | | | | | | | Options | | | | | | | | |
| | | | | | | 1 | 2 | 3 | 4 | 5 | 6 | 7 | 8 | 9 | 10 | 11 | 12 | 13 | | | | | | |
| 25 | 35 | 150 | 125 | 100 | 4 | C | R | 3 | 5 | 3 | A | B | 4 | | | | | | | | | | | \$71.00 |
| 30 | 40 | 180 | 150 | 120 | 4 | C | R | 3 | 5 | 3 | A | C | 4 | | | | | | | | | | | 77.00 |
| 40 | 50 | 240 | 200 | 160 | 4 | C | R | 3 | 5 | 3 | A | D | 4 | | | | | | | | | | | 89.00 |

*If no options are required, catalog number is complete after 10 digits.

Digit 9 Line and Load Terminals

| Catalog Number Digit 9 | Terminal Type | List Price Adder, GO-10DP | |
|------------------------|--------------------------|---------------------------|--------|
| | | 25-30A | 40A |
| A | Screw w/ Quick Connect | \$0.00 | \$6.00 |
| B | Box Lug w/ Quick Connect | 6.00 | 6.00 |
| C | Screw | 5.00 | 5.00 |
| D | Lug | 6.00 | 6.00 |

Digit 11 Terminal Markings

| Catalog Number Digit 11 | Terminal Markings | List Price Adder, GO-10DP |
|-------------------------|--|---------------------------|
| 0* | No terminal markings | \$1.00 |
| 1 | Line (L) at top, Load (T) at bottom (Standard) | 0.00 |
| 2 | Load (T) at top, Line (L) at bottom (Inverted) | 1.00 |

Digit 10 Coil Selection

AC Coils

| Coil Voltage | | Catalog Number Digit 10 |
|--------------|---------|-------------------------|
| 60 Hz | 50 Hz | |
| 24 | 24 | H |
| 110-120 | 110-120 | A |
| 208-240 | 208-240 | B |
| 277 | — | F |
| 415-480 | 415-480 | C |
| 575-600 | 550 | D |

DC Coils

| Coil Voltage | Catalog Number Digit 10 | List Price Adder, GO-10DP |
|--------------|-------------------------|---------------------------|
| 12 | P | \$36.00 |
| 24-28 | R | 36.00 |
| 110-125 | S | 36.00 |

Digit 12 Auxiliary Contacts

| Catalog Number Digit 12 | Auxiliary Contacts | List Price Adder, GO-10DP |
|-------------------------|----------------------------------|---------------------------|
| A* | None (standard) | \$0.00 |
| B | 10FLA, 250Vac SPDT on left side | 16.00 |
| C | 10FLA, 250Vac, SPDT left & right | 32.00 |

Digit 13 Nameplate Markings

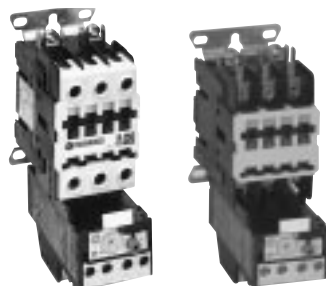
For special nameplate markings, contact factory.

| Catalog Number Digit 13 | Specials | List Price Adder, GO-10DP |
|-------------------------|-----------------|---------------------------|
| Blank | None (standard) | \$0.00 |

* If this will be the final digit(s) in your selection, omit from catalog number.

Definite Purpose Starters

Factory Modified Forms



Starters with screw line terminals will be supplied with short covers, and all others will be supplied with long covers.

CR454 Definite Purpose Starters, 25A-40A

Select your starter from the main table and complete the catalog number by inserting the digits corresponding to required and optional specifications from the tables below. For holding interlocks, select the appropriate auxiliary contact for Digits 13-14. *All factory modified forms require minimum orders/additional multiples. See page 37 for bulk pack details.*

| Full Load Amps | Resistive Amps Per Pole | Three Phase, 50/60 Hz | | | | | | Single Phase HP ^① | | Poles | Catalog Number (Complete by adding digits from tables below*) | | | | | | | | | | | | | | | | | List Price, GO-10DPA | | | | | | | | | | |
|----------------|-------------------------|-----------------------|-----|------|-----|------|-----|------------------------------|------|-------|--|---|---|---|---|---|---|---------|---|----|----|----|----|----|----|----|----|----------------------|--|--|--|--|--|--|--|--|-------|---------|
| | | 240V | | 480V | | 600V | | 120V | 240V | | Required Digits | | | | | | | Options | | | | | | | | | | | | | | | | | | | | |
| | | HP | LRA | HP | LRA | HP | LRA | | | | 1 | 2 | 3 | 4 | 5 | 6 | 7 | 8 | 9 | 10 | 11 | 12 | 13 | 14 | 15 | 16 | 17 | | | | | | | | | | | |
| 25 | 35 | 7.5 | 150 | 10 | 125 | 10 | 100 | 2 | 3 | 3 | C | R | 4 | 5 | 4 | A | B | 3 | | | | | | | | | | | | | | | | | | | | \$78.00 |
| 30 | 40 | 10 | 180 | 15 | 150 | 15 | 120 | 2 | 5 | 3 | C | R | 4 | 5 | 4 | A | C | 3 | | | | | | | | | | | | | | | | | | | 84.00 | |
| 40 | 50 | 10 | 240 | 20 | 200 | 20 | 160 | 3 | 7.5 | 3 | C | R | 4 | 5 | 4 | A | D | 3 | | | | | | | | | | | | | | | | | | | 93.75 | |

*If no options are required, catalog number is complete after 11 digits.

① For single-phase starters, wire 2 poles in series.

Digit 9 Coil Selection

| Coil Voltage | | Catalog Number Digit 9 |
|--------------|---------|------------------------|
| 60 Hz | 50 Hz | |
| 12 | 12 | E |
| 24 | 24 | H |
| 110-120 | 110-120 | A |
| 208-240 | 208-240 | B |
| 277 | - | F |
| 440-480 | 380-415 | C |
| 550-600 | 550-600 | D |

Digit 10 Line Terminals

| Catalog Number Digit 10 | Terminal Type | List Price Adder, GO-10DPA | |
|-------------------------|----------------------------------|----------------------------|--------|
| | | 25-30FLA | 40FLA |
| A | Screw w/ Quick Connect | \$0.00 | \$2.25 |
| B | Lug w/ Quick Connect | 2.25 | 2.25 |
| C | Screw | 0.00 | 2.25 |
| D | Lug | 2.25 | 2.25 |
| L | Sems Clamp w/ 1/4" Quick Connect | 3.75 | 3.75 |
| M | Sems Clamp | 3.00 | 3.00 |

Digit 11 Overload

Select range corresponding to full load amps. Overload digits B-J are Class 10 and require the selection of 1 or 2 for Digit 15. Overload digits K-W are available for Class 10 or Class 20.

| For Use With 25A-40A Contactor | | |
|--------------------------------|-------------------------|----------------------------|
| Overload Amp Range | Catalog Number Digit 11 | List Price Adder, GO-10DPA |
| 0.16-0.26 | B | \$55.00 |
| 0.25-0.41 | C | 55.00 |
| 0.4-0.65 | D | 55.00 |
| 0.65-1.1 | F | 55.00 |
| 1-1.5 | G | 55.00 |
| 1.3-1.9 | H | 55.00 |
| 1.8-2.7 | J | 55.00 |
| 2.5-4.1 | K | 55.00 |
| 4-6.3 | L | 55.00 |
| 5.5-8.5 | M | 57.00 |
| 8-12 | N | 57.00 |
| 10-16 | P | 57.00 |
| 14.5-18 | S | 57.00 |
| 17.5-22 | T | 57.00 |
| 21-26 | U | 57.00 |
| 25-32 | V | 65.00 |
| 30-40 | W | 78.00 |

Standard Forms p. 8
 Field Installation Kits p. 24
 Technical Data p. 27
 Outline Drawings p. 30

Digit 12 through 17 selection continues on next page.

Definite Purpose Starters

Factory Modified Forms

CR454 Definite Purpose Starters, 25A-40A (cont.)

Factory modified forms require minimum orders/additional multiples. See page 37 for bulk pack details.

Digit 12 Terminal Identification

| Catalog Number Digit 12 | Special Mark | List Price Adder, GO-10DPA |
|-------------------------|---|----------------------------|
| A* | Standard Top: L1, L2, L3 Bottom: T1, T2, T3 | \$0.00 |
| D | No markings | 1.00 |

Digits 13 & 14 Auxiliary Contacts

| Volts | Catalog Number Digits 13 & 14 | Contacts | List Price Adder, GO-10DPA |
|-------|-------------------------------|--------------------------|----------------------------|
| 250 | 00* | None (standard) | \$0.00 |
| | 1L | 1 SPDT Left | 16.00 |
| | 1R | 1 SPDT Right | 16.00 |
| | 2L | 2 SPDT Left | 30.00 |
| | 2R | 2 SPDT Right | 30.00 |
| | 2S | 1 SPDT Left & Right | 32.00 |
| 600 | 4S | 2 SPDT Left & Right | 60.00 |
| | 10 | 1 NO-NC Left | 40.00 |
| | 01 | 1 NO-NC Right | 40.00 |
| | 11 | 1 NO-NC Left & Right | 80.00 |
| | 12 | 1 NO-NC Left, 2 NO Right | 80.00 |
| | 20 | 2 NO Left | 40.00 |
| | 02 | 2 NO Right | 40.00 |
| | 22 | 2 NO Left & Right | 80.00 |
| 21 | 2 NO Left, 1 NO-NC Right | 80.00 | |

Digit 15 Modifications

| Catalog Number Digit 15 | Modification | List Price Adder, GO-10DPA |
|-------------------------|---|----------------------------|
| A* | No modifications (standard Class 20 overload). Applies only to overloads K-W in Digit 11. | \$0.00 |
| C | DIN rail clip option w/ Class 20 OLR | 7.00 |
| 1 | Class 10 overload | 0.00 |
| 2 | DIN rail clip option w/ Class 10 OLR | 9.00 |

Digit 16 Nameplate Marking/Enclosure Option

For special nameplate markings, contact factory.

| Catalog Number Digit 16 | Specials | List Price Adder, GO-10DPA |
|-------------------------|--|----------------------------|
| A* | None (standard) | \$0.00 |
| E | Starter assembled in CR453XEA1 enclosure | 62.00 |

Digit 17 Packaging

| Catalog Number Digit 17 | Specials | List Price Adder, GO-10DPA |
|-------------------------|--|----------------------------|
| Blank | Single | \$0.00 |
| P | Bulk pack (requires minimum order quantities; see page 37 for details) | 0.00 |

* If this will be the final digit(s) in your selection, omit from catalog number.

CR354F, 50A-60A, 2-pole & 3-pole

Select your contactor from the main table and complete the catalog number by inserting the digits corresponding to required and optional specifications from the tables below. *Note: minimum order quantities apply to all factory modified forms. Contact factory for details.*



| Full Load Amps | Locked Rotor Amps, Three Phase, 60 Hz | | | Phase | Poles | Overload Heaters | Catalog Number (Complete by adding digits from tables below*) | | | | | | | | | | | | List Price, GO-10DPA |
|----------------|---------------------------------------|------|------|-------|-------|------------------|--|---|---|---|---|---|---|---|---|----|----|----------|----------------------|
| | | | | | | | Required Digits | | | | | | | | | | | Opt. | |
| | 240V | 480V | 600V | | | | 1 | 2 | 3 | 4 | 5 | 6 | 7 | 8 | 9 | 10 | 11 | 12 | |
| 50 | 300 | 250 | 200 | 1 | 2 | 1 | C | R | 3 | 5 | 4 | F | E | 2 | B | | | \$242.00 | |
| | | | | 3 | 3 | 3 | C | R | 3 | 5 | 4 | F | E | 3 | B | | | 336.00 | |
| 60 | 360 | 300 | 240 | 1 | 2 | 1 | C | R | 3 | 5 | 4 | F | F | 2 | B | | | 282.00 | |
| | | | | 3 | 3 | 3 | C | R | 3 | 5 | 4 | F | F | 3 | B | | | 393.00 | |

*If no options are required, catalog number is complete after 11 digits.

Digit 10 Coil Selection

| Coil Voltage | | Catalog Number Digit 10 |
|--------------|---------|-------------------------|
| 60 Hz | 50 Hz | |
| 24 | 24 | H |
| 110-120 | 110-120 | A |
| 208-240 | 208-240 | B |
| 277 | — | F |
| 460-480 | 440 | C |
| 575-600 | 550 | D |

Digit 12 Auxiliary Contacts

| Catalog Number Digit 12 | Auxiliary Contacts | List Price Adder, GO-10DPA |
|-------------------------|-------------------------------|----------------------------|
| Blank | None | \$0.00 |
| B | 10A, 250V, SPDT, left side | 16.00 |
| C | 10A, 250V, SPDT, left & right | 32.00 |

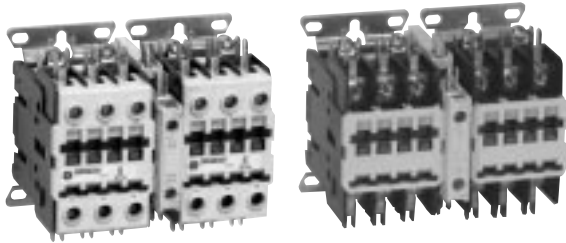
Digit 11 Overload Relay

| Catalog Number Digit 11 | Overload Relay | List Price Adder, GO-10DPA |
|-------------------------|---------------------|----------------------------|
| 3 | Standard | \$0.00 |
| 4 | Ambient Compensated | 16.00 |

Standard Forms p. 9
 Field Installation Kits p. 24
 Technical Data p. 27
 Heaters p. 29
 Outline Drawings p. 30

Definite Purpose 2-Speed Controllers

Factory Modified Forms



2-speed controllers with line and load screw terminals will be supplied with short covers, and all others will be supplied with long covers.

CR455 Definite Purpose Two-speed Controllers, 25A-40A

Select two-speed contactor from the main table and complete the catalog number by inserting the digits corresponding to required and optional specifications from the tables below.

Factory modified forms require minimum orders/additional multiples.

See page 37 for bulk pack details.

| Full Load Amps | Three Phase, 50/60 Hz | | | | | | Single Phase HP, 50/60 Hz | | Catalog Number (Complete by adding digits from tables below*) | | | | | | | | | | | | | | | | | List Price, GO-10DPA | | |
|----------------|-----------------------|-----|------|-----|------|-----|---------------------------|------|--|-----------------|---|---|---|---|---|---|---|---|----|----|----|---------|----|----|----|----------------------|----|----------|
| | 240V | | 480V | | 600V | | 120V | 240V | Poles | Required Digits | | | | | | | | | | | | Options | | | | | | |
| | HP | LRA | HP | LRA | HP | LRA | | | | 1 | 2 | 3 | 4 | 5 | 6 | 7 | 8 | 9 | 10 | 11 | 12 | 13 | 14 | 15 | 16 | | 17 | |
| 25 | 7.5 | 150 | 10 | 125 | 10 | 100 | 2 | 3 | 2-3 | C | R | 4 | 5 | 5 | A | B | 2 | | | | | D | | | | | | \$190.00 |
| | | | | | | | | | 3-3 | C | R | 4 | 5 | 5 | A | B | 3 | | | | | D | | | | | | |
| 30 | 10 | 180 | 15 | 150 | 15 | 120 | 2 | 5 | 2-3 | C | R | 4 | 5 | 5 | A | C | 2 | | | | | D | | | | | | 202.00 |
| | | | | | | | | | 3-3 | C | R | 4 | 5 | 5 | A | C | 3 | | | | | D | | | | | | |
| 40 | 10 | 240 | 20 | 200 | 20 | 160 | 3 | 7.5 | 2-3 | C | R | 4 | 5 | 5 | A | D | 2 | | | | | D | | | | | | 217.50 |
| | | | | | | | | | 3-3 | C | R | 4 | 5 | 5 | A | D | 3 | | | | | D | | | | | | |

*If no options are required, catalog number is complete after 12 digits.

Digit 9 Coil Selection

| Coil Voltage | | Catalog Number Digit 9 |
|--------------|---------|------------------------|
| 60 Hz | 50 Hz | |
| 12 | 12 | E |
| 24 | 24 | H |
| 110-120 | 110-120 | A |
| 208-240 | 208-240 | B |
| 277 | - | F |
| 440-480 | 380-415 | C |
| 550-600 | 550-600 | D |

Digit 10 Line Terminals

| Catalog Number Digit 10 | Terminal Type | List Price Adder, GO-10DPA | | | |
|-------------------------|----------------------------------|----------------------------|-----------------|--------------------|-----------------|
| | | 25-30FLA 2-3 poles | 40FLA 2-3 poles | 25-30FLA 3-3 poles | 40FLA 3-3 poles |
| A | Screw w/ Quick Connect | \$0.00 | \$3.75 | \$0.00 | \$4.50 |
| B | Lug w/ Quick Connect | 3.75 | 3.75 | 4.50 | 4.50 |
| C | Screw | 0.00 | 3.75 | 0.00 | 4.50 |
| D | Lug | 3.75 | 3.75 | 4.50 | 4.50 |
| L | Sems Clamp w/ 1/4" Quick Connect | 6.25 | 6.25 | 7.50 | 7.50 |
| M | Sems Clamp | 5.00 | 5.00 | 6.00 | 6.00 |

Digit 11 Load Terminals

| Catalog Number Digit 11 | Terminal Type | List Price Adder, GO-10DPA | | | |
|-------------------------|----------------------------------|----------------------------|-----------------|--------------------|-----------------|
| | | 25-30FLA 2-3 poles | 40FLA 2-3 poles | 25-30FLA 3-3 poles | 40FLA 3-3 poles |
| A | Screw w/ Quick Connect | \$0.00 | \$3.75 | \$0.00 | \$4.50 |
| B | Lug w/ Quick Connect | 3.75 | 3.75 | 4.50 | 4.50 |
| C | Screw | 0.00 | 3.75 | 0.00 | 4.50 |
| D | Lug | 3.75 | 3.75 | 4.50 | 4.50 |
| L | Sems Clamp w/ 1/4" Quick Connect | 6.25 | 6.25 | 7.50 | 7.50 |
| M | Sems Clamp | 5.00 | 5.00 | 6.00 | 6.00 |

Standard Forms p. 10
 Field Installation Kits p. 24
 Technical Data p. 27
 Outline Drawings p. 30

www.GEindustrial.com

Factory modified forms require a minimum order of 24 and additional multiples of 12.
See page 37 for bulk pack details.

Digits **13 & 14** Auxiliary Contacts

| Volts | Catalog Number Digits 13 & 14 | Contacts | List Price Adder, GO-10DPA |
|-------|-------------------------------|--------------------------|----------------------------|
| 250 | 00* | None (standard) | \$0.00 |
| | 1L | 1 SPDT Left | 16.00 |
| | 1R | 1 SPDT Right | 16.00 |
| | 2L | 2 SPDT Left | 30.00 |
| | 2R | 2 SPDT Right | 30.00 |
| | 2S | 1 SPDT Left & Right | 32.00 |
| | 4S | 2 SPDT Left & Right | 60.00 |
| 600 | 10 | 1 NO-NC Left | 40.00 |
| | 01 | 1 NO-NC Right | 40.00 |
| | 11 | 1 NO-NC Left & Right | 80.00 |
| | 12 | 1 NO-NC Left, 2 NO Right | 80.00 |
| | 20 | 2 NO Left | 40.00 |
| | 02 | 2 NO Right | 40.00 |
| | 22 | 2 NO Left & Right | 80.00 |
| | 21 | 2 NO Left, 1 NO-NC Right | 80.00 |

Digit **15** Modifications

| Catalog Number Digit 15 | Modification | List Price Adder, GO-10DPA |
|-------------------------|---|----------------------------|
| A* | No Modifications (standard) | \$0.00 |
| B | Coil rotated (terminal on load side) | 4.00 |
| C | DIN rail clip option | 14.00 |
| D | No cover (available on screw terminal forms only) | 0.00 |
| G | Coil rotated & DIN rail clip option | 18.00 |

Digit **16** Nameplate Marking

For special nameplate markings, contact factory.

| Catalog Number Digit 16 | Specials | List Price Adder, GO-10DPA |
|-------------------------|-----------------|----------------------------|
| A* | None (standard) | \$0.00 |

Digit **17** Packaging

| Catalog Number Digit 17 | Specials | List Price Adder, GO-10DPA |
|-------------------------|--|----------------------------|
| Blank | Single | \$0.00 |
| P | Bulk pack (requires minimum order quantities; see page 37 for details) | 0.00 |

Standard Forms p. 10
Field Installation Kits p. 24
Technical Data p. 27
Outline Drawings p. 30

* If this will be the final digit(s) in your selection, omit from catalog number.

Field Installation Kits

Not available for CR453C Compact Design

Auxiliary Contact Kits



| Contactors | Contactors Rating | Description | Catalog Number | List Price, GO-10DP |
|------------|---------------------|--|----------------|---------------------|
| CR453A | 25A-40A 2-3 pole | 250V, Side Mounted, SPDT | CR453XC211 | \$16.00 |
| | | 250V, Side Mounted, Two SPDT | CR453XC222 | 30.00 |
| | | 600V, Side Mounted, 1NO-1NC (BCLL11 with quick-connects) | CR453XC611 | 40.00 |
| | | 600V, Side Mounted, 2 NO (BCLL20 with quick-connects) | CR453XC620 | 40.00 |
| | | Mechanical & electrical interlock with 2 NC aux contacts (BELO2 with quick-connects) | CR453XM602 | 65.00 |
| | | DIN Rail Clip (sold only in multiples of 10) | CR453XDCA | 7.00 ea. |
| CR353A, F | 50A-60A | SPDT | CR353XAAA | 16.00 |
| CR353F | 75A-90A | SPDT | CR353XAAB | 20.00 |
| CR353G | 120A-150A | 1NO-1NC | CR353XADC | 32.00 |

C-2000 Accessories

For more information, see the C-2000 Contactors & Starters Purchasing Guide (DEP-014). For use with CR45* Devices.

Aux. Contacts & Mechanical Interlock



| Accessory | Description | Catalog Number | List Price, GO-10C2 |
|---------------------------------|-------------|----------------|---------------------|
| Front-Mount Aux. Contact Blocks | 1NO | BCLF10 | \$11.00 |
| | 1NC | BCLF01 | 11.00 |
| Side-Mount Aux. Contact Blocks | 1NO-1NC | BCLL11 | 19.00 |
| | 2NO | BCLL20 | 19.00 |
| Mechanical Interlock | 2NC | BELO2 | 35.00 |

DIN Rail

| Description | Catalog Number | List Price, GO-10C2 |
|-------------------------|----------------|---------------------|
| 35mm DIN Rail (1 meter) | CLXR35 | \$8.00 |

Mechanical Latch Block



| Release Voltage | Catalog Number | List Price, GO-10C2 |
|-----------------|----------------|---------------------|
| 24-32 Vac/dc | RMLFD | \$70.00 |
| 42-48 Vac/dc | RMLFG | 70.00 |
| 110-125 Vac/dc | RMLFJ | 70.00 |
| 208-277 Vac/dc | RMLFN | 70.00 |
| 380-480 Vac/dc | RMLFU | 70.00 |
| 500-600 Vac/dc | RMLFY | 70.00 |

Pneumatic Timers



| Type | Time Range | Contacts | Catalog Number | List Price, GO-10C2 |
|----------------|-------------|----------|----------------|---------------------|
| Time Delay On | 0.1-30 sec. | 1NO-1NC | BTLF30C | \$120.00 |
| | 1-60 sec. | 1NO-1NC | BTLF60C | 120.00 |
| Time Delay Off | 0.1-30 sec. | 1NO-1NC | BTLF30D | 120.00 |
| | 1-60 sec. | 1NO-1NC | BTLF60D | 120.00 |

Surge Suppressors

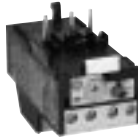


| Type | Voltage | Catalog Number | List Price, GO-10C2 |
|----------|----------------|----------------|---------------------|
| RC | 24-48 Vac | BSLR2G | \$24.00 |
| | 50-127 Vac | BSLR2K | 24.00 |
| | 130-240 Vac | BSLR2R | 24.00 |
| Diode | 12-600 Vac | BSLDZ | 24.00 |
| Varistor | 24-48 Vac/dc | BSLV3G | 24.00 |
| | 50-127 Vac/dc | BSLV3K | 24.00 |
| | 130-250 Vac/dc | BSLV3R | 24.00 |
| | 380-500 Vac/dc | BSLV3U | 24.00 |

Coil Terminal Cover



| Description | Catalog Number | List Price, GO-10DP |
|--|----------------|---------------------|
| Push-on coil terminal guard for IP 20 Finger-Safe Protection | CR453XG1 | \$3.00 |



Overload Relays

Direct mount, manual/auto reset (stop/reset only). Requires contactor with sems clamp terminal (without quick connects) on load side. Select M for Digit 11 on p. 14.

| Rated Current (Amps) | | Max. Fuse Rating (Amps) | Max. Circuit Breaker Rating (Amps) | Catalog Number | | List Price, GO-10C2 |
|----------------------|------|-------------------------|------------------------------------|----------------|----------|---------------------|
| Min. | Max. | | | Class 10 | Class 20 | |
| 0.16 | 0.26 | 1 | 15 | RT1B | — | \$55.00 |
| 0.25 | 0.41 | 1 | 15 | RT1C | — | 55.00 |
| 0.4 | 0.65 | 3 | 15 | RT1D | — | 55.00 |
| 0.65 | 1.1 | 6 | 15 | RT1F | — | 55.00 |
| 1 | 1.5 | 6 | 15 | RT1G | — | 55.00 |
| 1.3 | 1.9 | 6 | 15 | RT1H | — | 55.00 |
| 1.8 | 2.7 | 10 | 15 | RT1J | — | 55.00 |
| 2.5 | 4.1 | 15 | 15 | RT1K | RT12K | 55.00 |
| 4 | 6.3 | 20 | 15 | RT1L | RT12L | 55.00 |
| 5.5 | 8.5 | 25 | 15 | RT1M | RT12M | 57.00 |
| 8 | 12 | 40 | 30 | RT1N | RT12N | 57.00 |
| 10 | 16 | 50 | 35 | RT1P | RT12P | 57.00 |
| 14.5 | 18 | 60 | 40 | RT1S | RT12S | 57.00 |
| 17.5 | 22 | 70 | 50 | RT1T | RT12T | 57.00 |
| 21 | 26 | 80 | 60 | RT1U | RT12U | 57.00 |
| 25 | 32 | 100 | 80 | RT1V | RT12V | 65.00 |
| 30 | 40 | 100 | 80 | RT1W | RT12W | 78.00 |



Remote Electrical Reset for RT1 Overload Relays

| Voltage 50/60 Hz AC/DC | Catalog Number | List Price, GO-10C2 |
|------------------------|----------------|---------------------|
| 12 | RTXRRB | \$55.00 |
| 24 | RTXRRD | 55.00 |
| 48 | RTXRRG | 55.00 |
| 110-120 | RTXRRJ | 55.00 |
| 220-240 | RTXRRN | 55.00 |
| 380-415 | RTXRRU | 55.00 |
| 440-480 | RTXRRX | 55.00 |

Panel Mount Overload Base Adapter

| Catalog Number | List Price, GO-10C2 |
|----------------|---------------------|
| RTXP | \$12.00 |



NEMA Type 1 Enclosure Kits for Contactors & Starters

For 120A-150A contactor enclosures, contact your local GE Industrial Systems sales office.

| Device | Rating | Catalog Number | List Price, GO-10DP |
|-----------------------|-------------------------------------|----------------|---------------------|
| Contactors & Starters | 25A-40A, 1-3 pole | CR453XE1A | \$42.00 |
| Contactors | 25A-40A, 4-pole and 50A-60A, 3-pole | CR353XE1BB | 42.00 |
| | 75A-90A | CR353XE1BC | 60.00 |
| Starters | 50A | CR353XE1AA | 48.00 |



Enclosure with optional CLXR11 reset kit

Accessories for CR453XE1A Enclosure

| Accessory | Catalog Number | List Price, GO-10C2 |
|--|----------------|---------------------|
| Start/Stop Push Button without Light | CLXP1B | \$39.00 |
| Start/Stop Push Button with Light | 115V CLXP1C1 | 112.00 |
| | 230V CLXP1C2 | 112.00 |
| | 460V CLXP1C3 | 112.00 |
| | 575V CLXP1C4 | 112.00 |
| H-O-A Switch | CLXP1D | 39.00 |
| On-Off Switch | CLXP1E | 39.00 |
| Red Indicating Light (for use with H-O-A or On-Off selector switches) ^① | CLXP1F | 67.00 |
| Reset Kit for Starter Enclosure | CLXR11 | 8.00 |

^① Each kit has three resistors allowing light to be used with all voltages 110 through 600.

Replacement Parts

AC Replacement Coils

| Contactor | Coil Letter Code | 60Hz | Volts 50Hz | Catalog Number | List Price, GO-11G |
|---------------------------------------|------------------|---------|------------|----------------|--------------------|
| 25-40A CR453A CR454A CR455A | A | 110-120 | 110-120 | 55-537283A | \$ 24.00 |
| | B | 208-240 | 208-240 | 55-537283B | 24.00 |
| | C | 440-480 | 380-415 | 55-537283C | 24.00 |
| | D | 550-600 | 550-600 | 55-537283D | 24.00 |
| | E | 12 | 12 | 55-537283E | 24.00 |
| | F | 277 | — | 55-537283F | 24.00 |
| | H | 24 | 24 | 55-537283H | 24.00 |
| 25A-40A CR353A CR354A CR355A | A | 110-120 | 110-120 | 55-B31A | 24.00 |
| | B | 208-240 | 208-240 | 55-B31B | 24.00 |
| | C | 415-480 | 415-480 | 55-B31C | 24.00 |
| | F | 277 | — | 55-B31F | 24.00 |
| | H (2-3 pole) | 24 | 24 | 55-B34H | 24.00 |
| | H (4 pole) | 24 | 24 | 55-B31H | 24.00 |
| 50A-60A CR353FE,F CR354FE,F | D | 575-600 | 550 | 55-B31D | 24.00 |
| | A | 110-120 | 110-120 | 55-B38A | 30.00 |
| | B | 208-240 | 208-240 | 55-B38B | 30.00 |
| | C | 440-480 | 380-415 | 55-B38C | 30.00 |
| | D | 575-600 | 550 | 55-B38D | 30.00 |
| | F | 277 | — | 55-B38F | 30.00 |
| 50A-60A CR355EE,F | H | 24 | 24 | 55-B38H | 30.00 |
| | A | 110-120 | 110-120 | 55-B21A | 54.00 |
| | B | 208-240 | 208-240 | 55-B21B | 54.00 |
| | C | 415-480 | 415-480 | 55-B21C | 54.00 |
| | D | 575-600 | 550 | 55-B21D | 54.00 |
| | F | 277 | — | 55-B21F | 54.00 |
| 75A-90A CR353EG,H CR355EG,H | H | 24 | 24 | 55-B21H | 54.00 |
| | A | 110-120 | 110-120 | 55-B22A | 60.00 |
| | B | 208-240 | 208-240 | 55-B22B | 60.00 |
| | C | 440-480 | 380-415 | 55-B22C | 60.00 |
| | D | 575-600 | 550 | 55-B22D | 60.00 |
| | F | 277 | — | 55-B22F | 60.00 |
| 120A CR353GJ | H | 24 | 24 | 55-B22H | 60.00 |
| | A | 115-120 | 110 | 55-501336G002 | 148.00 |
| | B | 230-240 | 220 | 55-501336G003 | 148.00 |
| | C | 460-480 | 440 | 55-501336G004 | 148.00 |
| 150A CR353GK | D | 575-600 | 550 | 55-501336G005 | 148.00 |
| | A | 115-120 | 110 | 55-501563G002 | 202.00 |
| | B | 230-240 | 220 | 55-501563G003 | 202.00 |
| | C | 460-480 | 440 | 55-501563G004 | 202.00 |
| | D | 575-600 | 550 | 55-501563G005 | 202.00 |

Replacement Contact Kits for CR353

| Contactor Rating | Poles Per Kit | Termination | Catalog Number | List Price, GO-11GS |
|------------------|---------------|---------------------|----------------|---------------------|
| 40A | 4 | Screw/Quick Connect | 55-152313G111B | \$64.00 |
| 50A ^① | 1 | Lug/Quick Connect | 55-152313G216 | 32.00 |
| 60A ^② | 1 | Lug/Quick Connect | 55-152313G237 | 35.00 |
| 75A | 1 | Lug/Quick Connect | 55-152313G218 | 58.00 |
| 90A | 1 | Lug/Quick Connect | 55-152313G217 | 84.00 |
| 120A | 3 | Pressure | 55-152313G139 | 308.00 |
| 150A | 3 | Pressure | 55-152313G140 | 418.00 |

① For CR353EE and CR355EE, use 55-152313G150, List Price, \$26.00, GO-11GS.

② For CR353EF and CR355EF, use 55-152313G219, List Price, \$32.00, GO-11GS.

DP Contactors Sample Case

Includes case and the following:



CR453CA1AAA
 CR453CB3AAA
 CR453CE2ABB
 CR453AB3AAA
 CR453AD3ADM
 BCLF10
 CR453XC211
 CR453XC611
 CR453XM602
 RT1U
 Screwdriver

| Item | Catalog Number | List Price, GO-10DP |
|---------------------------|----------------|---------------------|
| DP Contactors Sample Case | CR453KIT | \$500.00 |

Technical Data

DP Controls

| Family | Type | Locked Rotor Amps | | | | | | | | | % of Nominal Coil Voltage | | Wire Size Range AWG | Terminal Torque (lb.-in.) | Approx. Shipping Weight (lbs.) |
|--------|------|-------------------|-----------|---------------------------------------|------|------|------------|------|------|--------|---------------------------|------|---------------------|---------------------------|--------------------------------|
| | | Amps | | 1Ø per pole, 1-pole or 1-pole + shunt | | | 1Ø, 2-pole | | | Pickup | Dropout | | | | |
| | | Inductive | Resistive | 240/277V | 480V | 600V | 240/277V | 480V | 600V | | | | | | |
| CR453 | CA | 20 | 30 | 120 | 100 | 80 | 120 | 100 | 80 | 85% | 60% | 16-8 | 20 | 0.7 | |
| | CB | 25 | 35 | 150 | 125 | 100 | 150 | 125 | 100 | 85% | 60% | 16-8 | 20 | 0.7 | |
| | CC | 30 | 40 | 180 | 150 | 120 | 180 | 150 | 120 | 85% | 60% | 16-8 | 20 | 0.7 | |
| | CD | 35 | 50 | 180 | 150 | 120 | 210 | 175 | 140 | 85% | 60% | 16-8 | 20 | 0.7 | |
| | CE | 40 | 50 | 180 | 150 | 120 | 240 | 200 | 160 | 85% | 60% | 14-4 | 40 | 0.7 | |

| Family | Type | Amps | | Locked Rotor Amps | | | | | | | | | % of Nominal Coil Voltage | | Wire Size Range AWG | Terminal Torque (lb.-in.) | Approx. Shipping Weight (lbs.) |
|-----------------|------|-----------|-----------|----------------------|------|------|----------------------|------|------|--------------|------|------|---------------------------|---------|---------------------|---------------------------|--------------------------------|
| | | Inductive | Resistive | 3Ø 3-pole, 1Ø 2-pole | | | 3Ø 2-pole, 1Ø 1-pole | | | Part Winding | | | Pickup | Dropout | | | |
| | | | | 240V | 480V | 600V | 240V | 480V | 600V | 240V | 480V | 600V | | | | | |
| CR453, | AB | 25 | 35 | 150 | 125 | 100 | — | — | — | — | — | — | ≤85% | ≤60% | 16-8 | 20 | 1.0 (CR453) |
| CR454, | AC | 30 | 40 | 180 | 150 | 120 | — | — | — | — | — | — | ≤85% | ≤60% | 16-8 | 20 | 3.1 (CR454) |
| CR455 | AD | 40 | 50 | 240 | 200 | 160 | — | — | — | — | — | — | ≤85% | ≤60% | 14-4 | 40 | 3.1 (CR455) |
| CR353, CR355 | AB | 25 | 35 | 150 | 125 | 100 | 150 | 125 | 100 | 150 | 125 | 100 | ≤85% | ≤50% | 16-8 | 20 | 1.5 (CR353) |
| | AC | 30 | 40 | 180 | 150 | 120 | 180 | 150 | 120 | 180 | 150 | 120 | ≤85% | ≤50% | 16-8 | 20 | 4.3 (CR355) |
| | AD | 40 | 50 | 240 | 200 | 160 | 240 | 200 | 160 | 192 | 192 | 160 | ≤85% | ≤50% | 14-4 | 40 | |
| CR353, CR354 | FE | 50 | 62 | 300 | 250 | 200 | — | — | — | 300 | 250 | 200 | ≤85% | ≤60% | 14-2 | 50 | 1.9 (CR353), |
| | FF | 60 | 75 | 360 | 300 | 240 | — | — | — | 360 | 300 | 240 | ≤85% | ≤60% | 14-2 | 50 | 3.5 (CR354) |
| CR353, CR355 | EG | 75 | 90 | 450 | 375 | 300 | — | — | — | 450 | 375 | 300 | ≤85% | ≤55% | 14-2/0 | 50 | 4.0 (CR353), |
| | EH | 90 | 90 | 540 | 450 | 360 | — | — | — | 540 | 450 | 360 | ≤85% | ≤55% | 14-2/0 | 50 | 8.1 (CR355) |
| CR353 | GJ | 120 | 120 | 720 | 600 | 480 | — | — | — | 720 | 600 | 480 | ≤85% | ≤65% | 8-3/0 | 200 | 17.5 |
| | GK | 150 | 150 | 900 | 750 | 600 | — | — | — | 900 | 750 | 600 | ≤85% | ≤65% | 8-3/0 | 200 | |

UL References

| Family | | | File | Volume | Section | Issued |
|--------|-------|-------|-------|--------|---------|---------|
| CR453 | CR454 | CR455 | | | | |
| A | | | E1811 | 17 | 1 | 6/15/01 |
| | A | A | E1811 | 17 | 3 | 6/15/01 |
| C | | | E1811 | NA | NA | 5/24/01 |

| Family | | | File | Volume | Section | Issued |
|--------|-------|-------|-------|--------|---------|----------|
| CR353 | CR354 | CR355 | | | | |
| AB | | AB | E1811 | 2 | 52 | 09/26/74 |
| AC | | AC | E1811 | 2 | 51 | 09/25/74 |
| AD | | AD | E1811 | 2 | 21 | 02/09/67 |
| | AB | | E1811 | 2 | 50 | 08/09/75 |
| | AC | | E1811 | 2 | 50 | 08/09/75 |
| | AD | | E1811 | 2 | 50 | 08/09/75 |
| | | EE | E1811 | 2 | 26 | 03/10/70 |
| | | EF | E1811 | 2 | 25 | 01/22/70 |
| EG | | EG | E1811 | 2 | 24 | 10/15/68 |
| EH | | EH | E1811 | 2 | 30 | 06/01/71 |
| FE | FE | | E1811 | 2 | 54 | 06/17/75 |
| FF | FF | | E1811 | 2 | 54 | 06/17/75 |
| GJ | | | E1811 | 2 | 47 | 01/31/74 |
| GK | | | E1811 | 3 | 5 | 05/26/76 |

Aux. Contact Ratings

| Product Line | Type | Kits | Catalog Number |
|--------------|----------------|----------|---|
| CR453A | 250V SPDT | 453XC2** | 11 A, 1/3 HP at 250 VAC; 1/2 A at 125 VDC; 1/4 A at 250 VDC |
| | 600V | 453XC6** | A600, Q600 Pilot duty |
| | 600V Interlock | 453XM602 | A600, Q600 Pilot duty |
| CR353A,F | 250V SPDT | 353XAAA | 10 A, 1/3 HP at 250 VAC; 1/2 A at 125 VDC; 1/4 A at 250 VDC |
| CR353E | 250V SPDT | 353XAAB | 10 A, 1/3 HP at 250 VAC; 1/2 A at 125 VDC; 1/4 A at 250 VDC |
| CR353G | 600V | 353XA*C | A600, P300 Pilot duty |

CSA References

| Product Line | CSA Certificate | Class | | |
|--------------|-----------------|--|---|----------------------------|
| | | 1222 01 | 3211 04 | 4813 01 |
| | | REFRIGERATION EQUIPMENT – Refrigeration Machines & Accessories | INDUSTRIAL CONTROL EQUIPMENT – Motor Controllers – Magnetic | HEATERS – AIR, ACCESSORIES |
| CR453C | 212530 | ✓ | | ✓ |
| CR453A | 1209883 | ✓ | ✓ | ✓ |

CR453C CE Technical Data

| Type | Electrical Rating | | | UL File No. |
|---------|-------------------|------------|------------|-------------|
| | AC1 @ 480V | AC3 @ 240V | AC3 @ 480V | |
| CR453CA | 30A | 20A | 16.7A | E126105 |
| CR453CB | 35A | 25A | 20.8A | E126105 |
| CR453CC | 40A | 30A | 25A | E126105 |
| CR453CD | 50A | 35A | 25A | E126105 |
| CR453CE | 50A | 40A | 25A | E126105 |

Technical Data

AC Coils

| Family | Coil Voltage | Inrush VA | Sealed VA | Sealed Watts | Resistance Ohms ±10% |
|--------|----------------------------------|-----------|-----------|--------------|----------------------|
| CR453C | 24V, 50/60 Hz | 29 | 5.0 | 2.6 | 11 |
| | 110-120V, 50/60 Hz | 34 | 6.0 | 3.3 | 244 |
| | 208-240V, 50/60 Hz | 33 | 5.6 | 3.7 | 990 |
| CR45*A | 277V, 60 Hz | 30 | 6.3 | 3.2 | 1520 |
| | 12V, 50/60 Hz | 50 | 7 | 1.8 | 2.3 |
| | 24V, 50/60 Hz | 50 | 7 | 1.8 | 8.4 |
| | 110-120V, 50/60 Hz | 50 | 7 | 1.8 | 216 |
| | 208-240V, 50/60 Hz | 50 | 7 | 1.8 | 852 |
| | 277V, 60 Hz | 50 | 7 | 2.3 | 1137 |
| | 380-415V, 50 Hz; 440-480V, 50 Hz | 50 | 7 | 2.3 | 3322 |
| CR355A | 550-600V, 60 Hz | 50 | 7 | 2.3 | 4377 |
| | 24V, 50/60 Hz | 77 | 12 | 4.4 | 3.9 |
| | 110-120V, 50/60 Hz | 77 | 12 | 4.4 | 90 |
| CR35*F | 208-240V, 50/60 Hz | 77 | 12 | 4.4 | 366 |
| | 24V, 60 Hz | 125 | 17 | 8 | 2.7 |
| | 115-120V 60 Hz, 110V 50 Hz | 125 | 17 | 8 | 64 |
| | 208-240V 60 Hz, 220V 50 Hz | 125 | 17 | 8 | 241 |
| | 277V, 60 Hz | 125 | 17 | 8 | 389 |
| | 460V 60 Hz, 440V 50 Hz | 125 | 17 | 8 | 972 |
| CR35*E | 600V 60 Hz, 550V 50 Hz | 125 | 17 | 8 | 2074 |
| | 24V, 50/60 Hz | 233 | 40 | 16 | 1.0 |
| | 110-120V, 50/60 Hz | 233 | 40 | 16 | 28 |
| | 208-240V, 50-60 Hz | 233 | 40 | 16 | 109 |
| | 277V, 60 Hz | 233 | 40 | 16 | 169 |
| CR353G | 440-480V 60 Hz, 380-415V 60 Hz | 233 | 40 | 16 | 547 |
| | 575-600V 60 Hz, 550V 50 Hz | 233 | 40 | 16 | 655 |
| | 115-120V 60 Hz, 110V 50 Hz | 1150 | 80 | 18.4 | 2.11 |
| | 230-240V 60 Hz, 220V 50 Hz | 1150 | 80 | 18.4 | 10.6 |
| CR353E | 460-480 60 Hz, 440V 50 Hz | 1150 | 80 | 18.4 | 41.8 |
| | 575-600 60 Hz, 550V 50 Hz | 1150 | 80 | 18.4 | 67.0 |

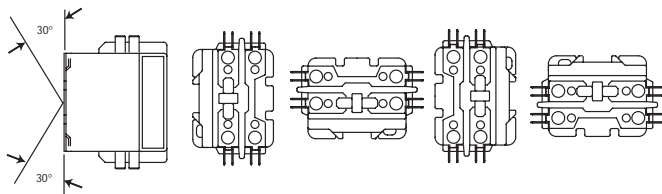
DC Coils

| Family | Voltage DC | Inrush VA | Sealed VA | Sealed Watts | Resistance Ohms ±10% | |
|--------|------------|-----------|-----------|--------------|----------------------|--------|
| | | | | | Inrush | Sealed |
| CR353A | 12 | 46 | 2.3 | 2.3 | 3.13 | 61.6 |
| | 24-28 | 44 | 2.0 | 2.0 | 13.1 | 283 |
| | 110-125 | 141 | 5.1 | 5.1 | 102 | 2783 |
| CR353F | 12 | 107 | 3.8 | 3.8 | 1.35 | 37.6 |
| | 24-28 | 110 | 3.8 | 3.8 | 5.2 | 153 |
| | 110-125 | 110 | 5.25 | 5.25 | 133 | 2519 |
| CR353E | 12 | 278 | 11.3 | 11.3 | 0.54 | 12.7 |
| | 24-48 | 270 | 11.1 | 11.1 | 2.13 | 51.9 |
| | 48 | 301 | 12.6 | 12.6 | 7.65 | 183.0 |
| | 110-125 | 292 | 12.0 | 12.0 | 47.1 | 1133 |

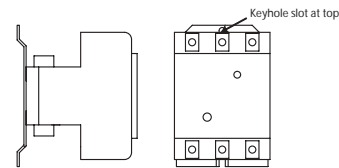
Mounting Positions

To maintain operating integrity, contactors must be mounted in one of the positions shown below:

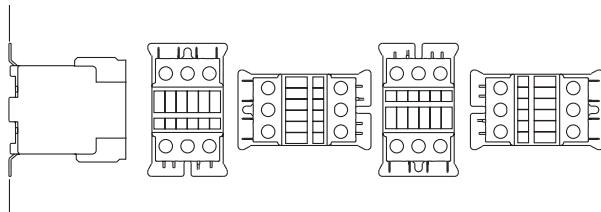
CR453C



CR353



CR453A



Definite Purpose Starters

Heater Selection

For CR354 Definite Purpose Starters, 50A-60A

Standard or ambient compensated overload relays, open or Type 1 enclosed

To prevent overloading the starter, do not select heater(s) for a motor with a rating larger than the maximum shown on the starter nameplate. If a motor's full-load amps fall between two ratings, select heaters with the higher of the two ratings.

For continuous rated motors with a service factor of 1.15 to 1.25, select the heater with maximum motors amps equal to or immediately greater than the motor full-load current. This will provide a maximum of 125% protection. For continuous rated motors with no service factor, multiply the full-load current of the motor by 0.9 and use the resulting value to select the heater.

To protect the heater and starter during a short circuit, provide motor branch circuit protection in accordance with Table 420-152 in Article 430 of the National Electrical Code. In no case should the fuse rating exceed 4 times the motor full-load current for single-element fuses or 2.25 times the motor full-load current for dual-element fuses.

Do not use these tables to select heaters for hermetic motor applications. Contact your GE Industrial Systems sales office for information.

Heater amps are based on 75°C wire. All heaters are packaged 3 per carton and carry a **List Price of \$9.00, GO-10H.**

Single-phase (1 heater required)

| Max. Motor FLA | | Catalog Number |
|----------------|-------------|----------------|
| 50A Starter | 60A Starter | |
| 6.15 | 6.15 | CR123C592A |
| 6.47 | 6.47 | CR123C630A |
| 6.84 | 6.84 | CR123C695A |
| 7.72 | 7.72 | CR123C778A |
| 8.99 | 8.99 | CR123C867A |
| 9.87 | 9.87 | CR123C955A |
| 10.6 | 10.6 | CR123C104B |
| 12.0 | 12.0 | CR123C113B |
| 12.3 | 12.3 | CR123C125B |
| 14.0 | 14.0 | CR123C137B |
| 15.7 | 15.7 | CR123C151B |
| 17.6 | 17.6 | CR123C163B |
| 20.1 | 20.1 | CR123C180B |
| 23.3 | 23.3 | CR123C198B |
| 27.0 | 27.0 | CR123C214B |
| 29.8 | 29.8 | CR123C228B |
| 32.2 | 32.2 | CR123C250B |
| 33.9 | 33.9 | CR123C273B |
| 36.7 | 36.7 | CR123C303B |
| 42.5 | 42.5 | CR123C330B |
| 46.2 | 46.2 | CR123C366B |
| 50.0 | 50.3 | CR123C400B |
| — | 52.4 | CR123C440B |
| — | 58.2 | CR123C460B |
| — | 60.0 | CR123C500B |

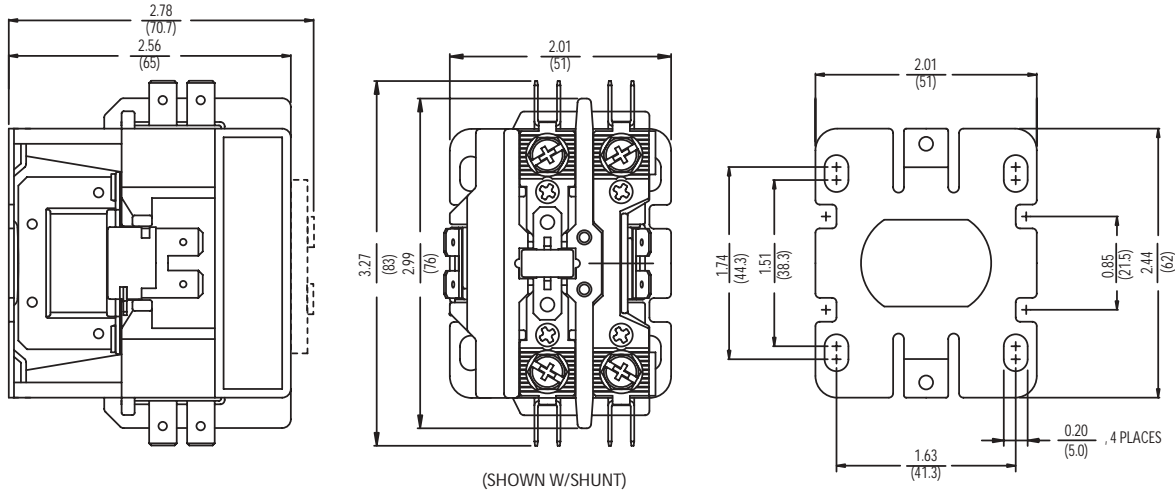
Three-phase (3 heaters required)

| Max. Motor FLA | | Catalog Number |
|----------------|-------------|----------------|
| 50A Starter | 60A Starter | |
| 6.07 | 5.14 | CR123C630A |
| 6.63 | 5.63 | CR123C695A |
| 7.35 | 6.26 | CR123C778A |
| 8.09 | 7.15 | CR123C867A |
| 8.89 | 7.58 | CR123C955A |
| 9.78 | 8.39 | CR123C104B |
| 10.8 | 9.11 | CR123C113B |
| 11.8 | 9.67 | CR123C125B |
| 13.0 | 11.0 | CR123C137B |
| 14.5 | 12.0 | CR123C151B |
| 16.1 | 14.4 | CR123C163B |
| 17.9 | 16.3 | CR123C180B |
| 19.8 | 17.3 | CR123C198B |
| 22.0 | 19.3 | CR123C214B |
| 24.4 | 20.9 | CR123C228B |
| 27.1 | 22.9 | CR123C250B |
| 29.9 | 24.7 | CR123C273B |
| 34.1 | 28.0 | CR123C303B |
| 38.8 | 32.1 | CR123C330B |
| 44.3 | 35.9 | CR123C366B |
| 50.0 | 41.5 | CR123C400B |
| — | 43.4 | CR123C440B |
| — | 46.4 | CR123C460B |
| — | 50.9 | CR123C500B |
| — | 56.9 | CR123C550B |
| — | 60.0 | CR123C600B |

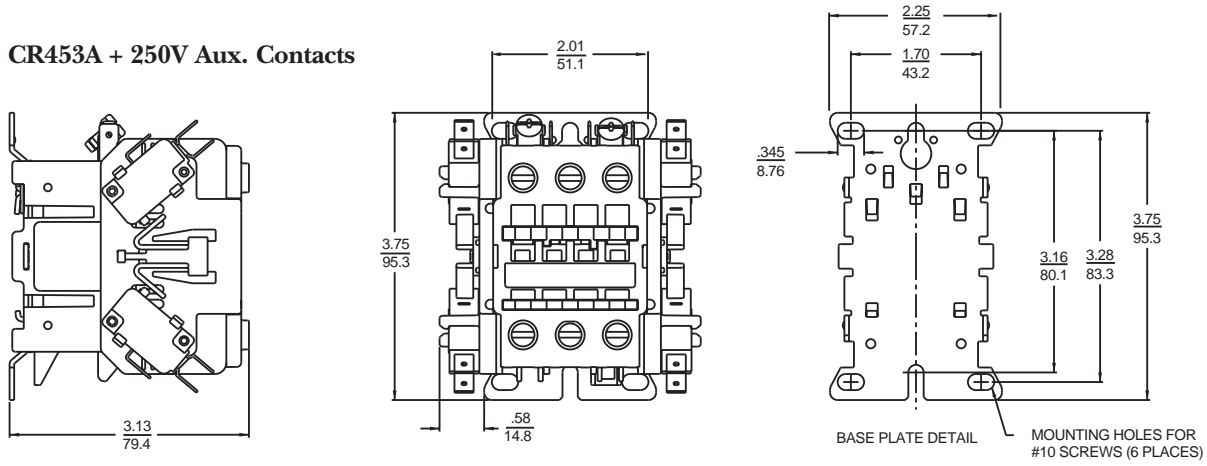
Outline Drawings

Dual Dimensions $\frac{\text{Inches}}{\text{mm}}$ for Estimating Only

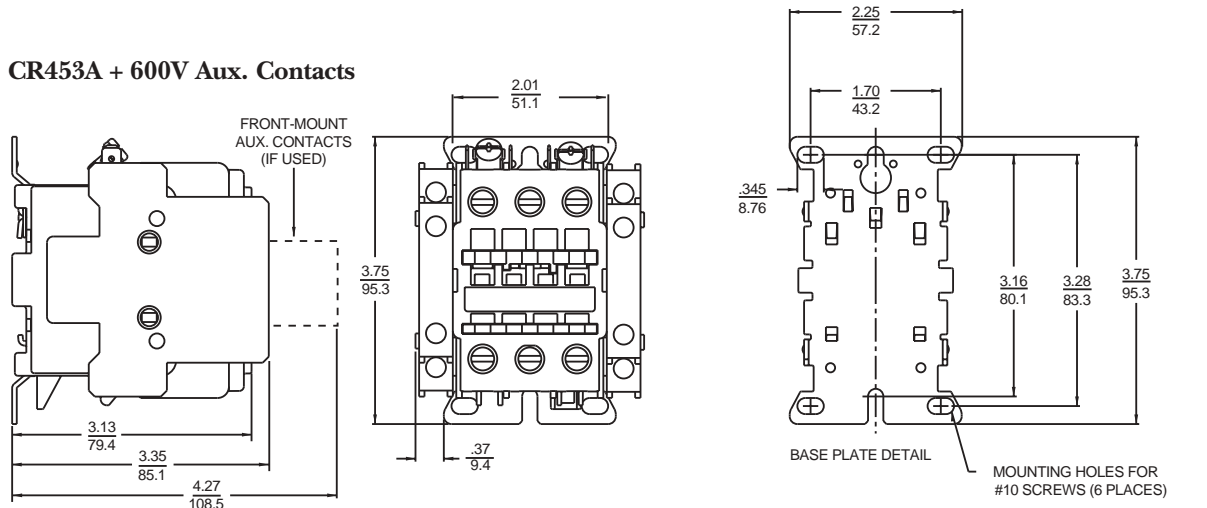
CR453C



CR453A + 250V Aux. Contacts

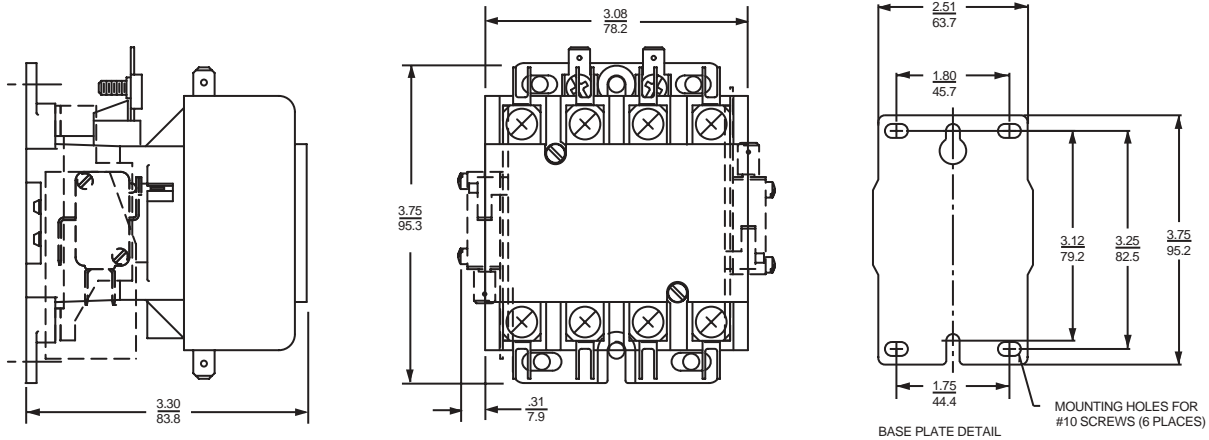


CR453A + 600V Aux. Contacts

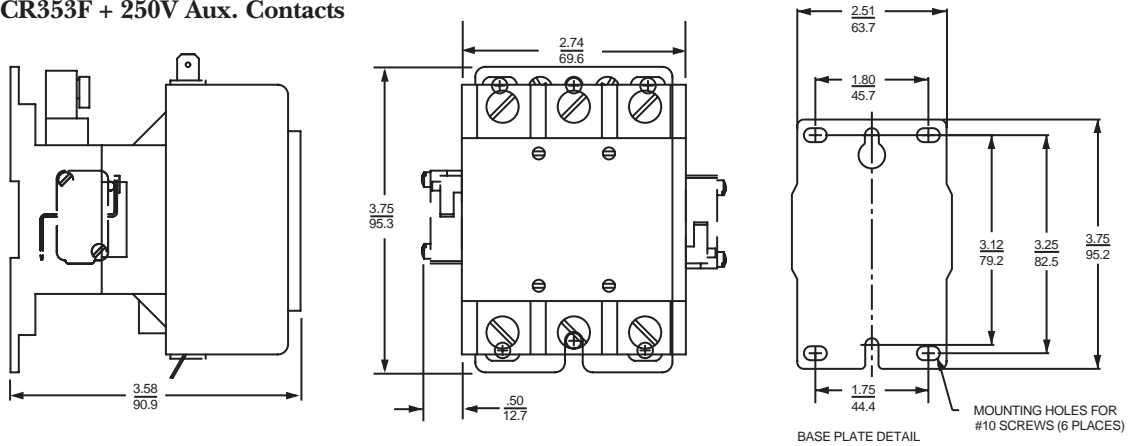


CR353A, 4-pole + 250V Aux. Contacts

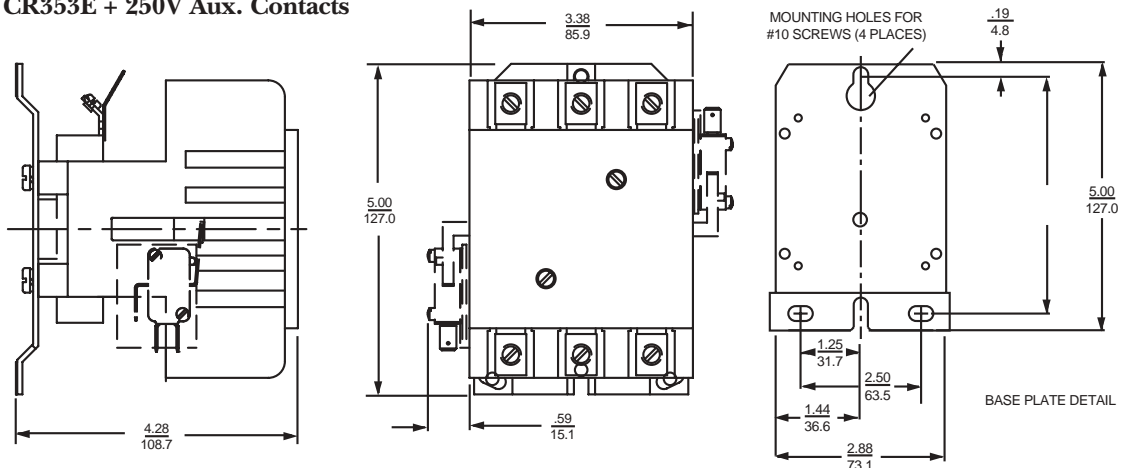
Dual Dimensions $\frac{\text{Inches}}{\text{mm}}$ for Estimating Only



CR353F + 250V Aux. Contacts



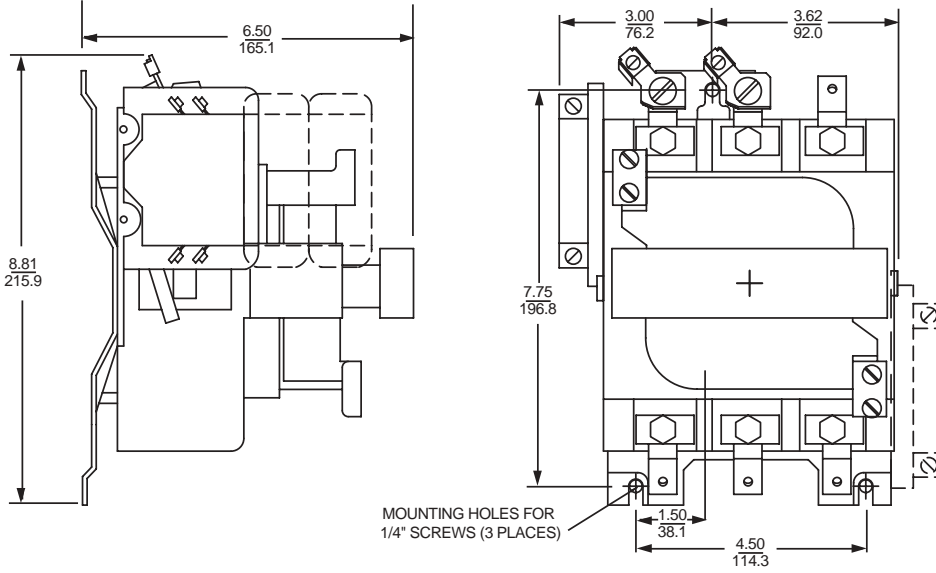
CR353E + 250V Aux. Contacts



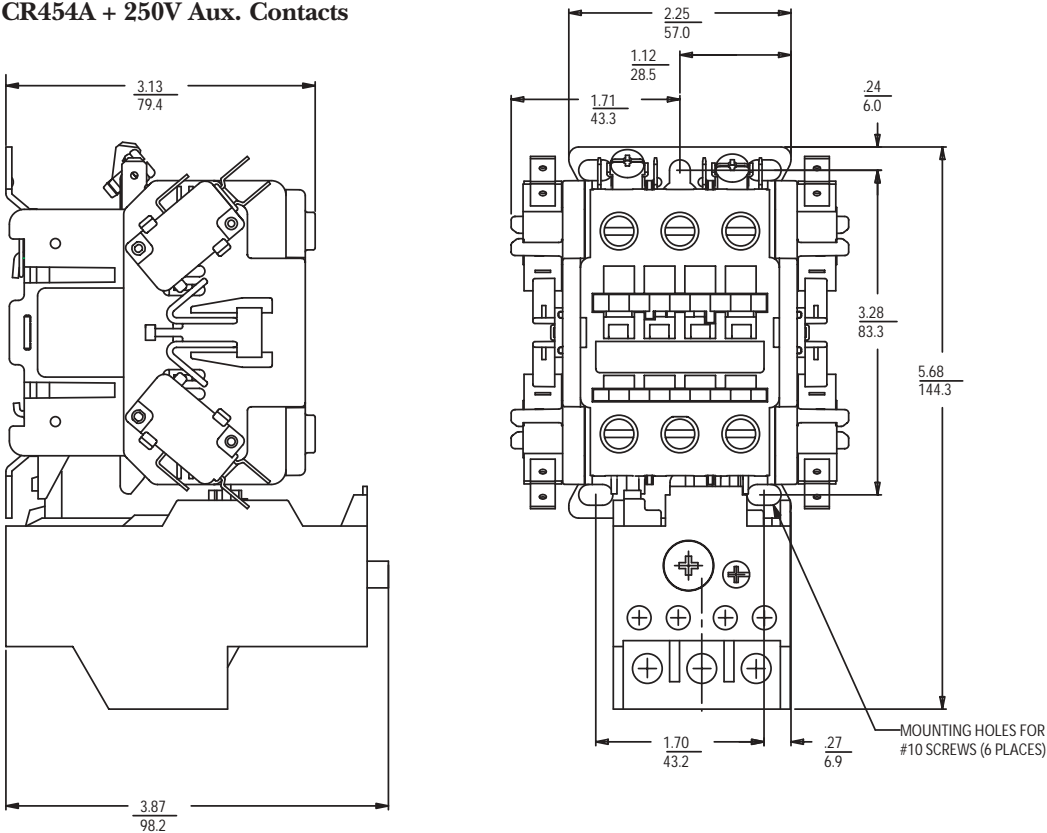
Outline Drawings

CR353G + 600V Aux. Contacts

Dual Dimensions $\frac{\text{Inches}}{\text{mm}}$ for Estimating Only

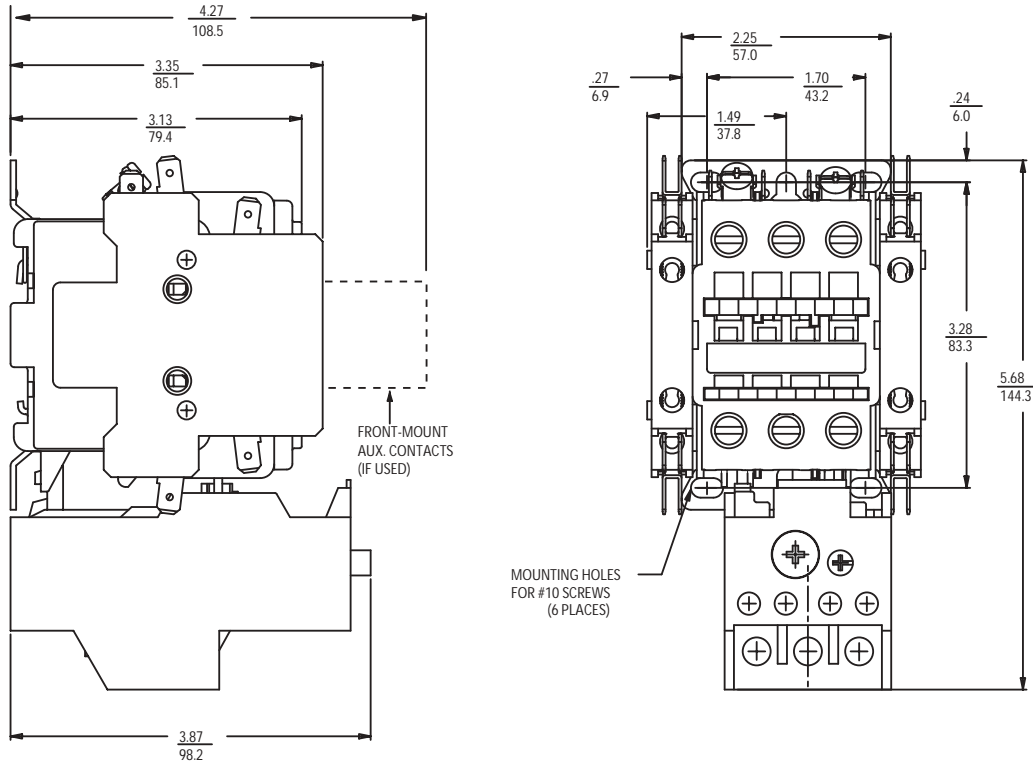


CR454A + 250V Aux. Contacts

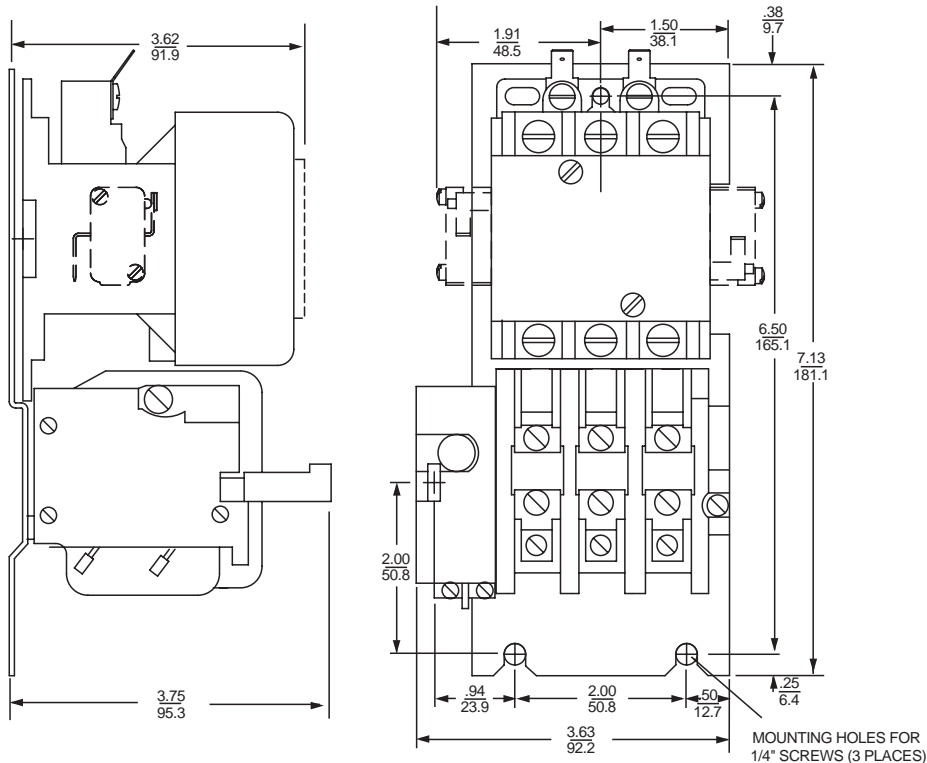


Dual Dimensions $\frac{\text{Inches}}{\text{mm}}$ for Estimating Only

CR454A + 600V Aux. Contacts

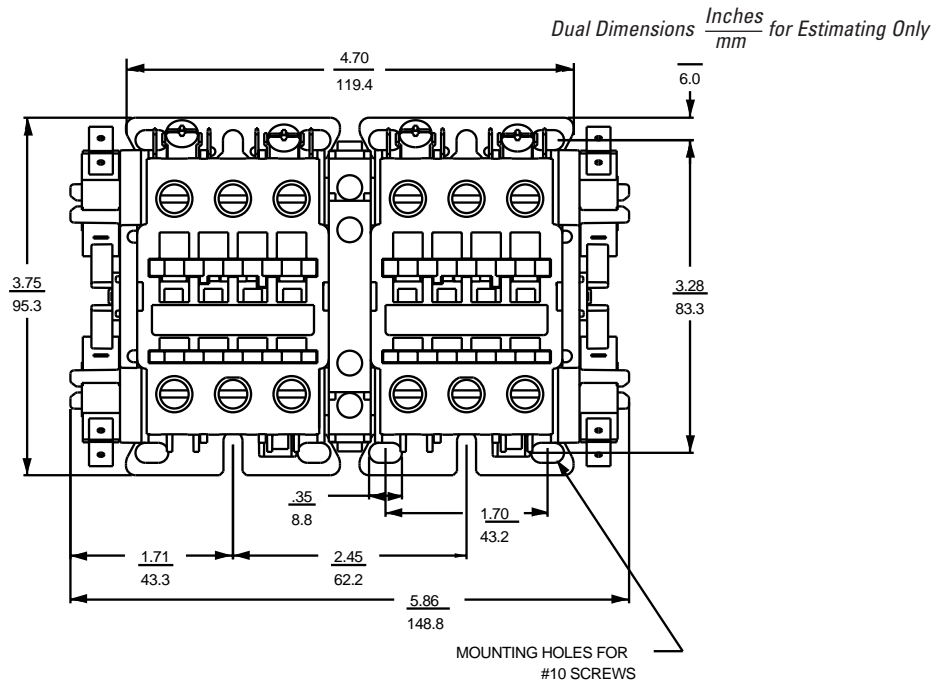
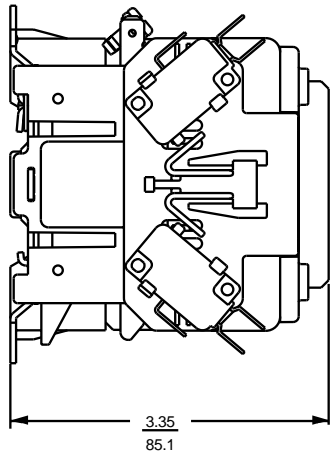


CR354F + 250V Aux. Contacts

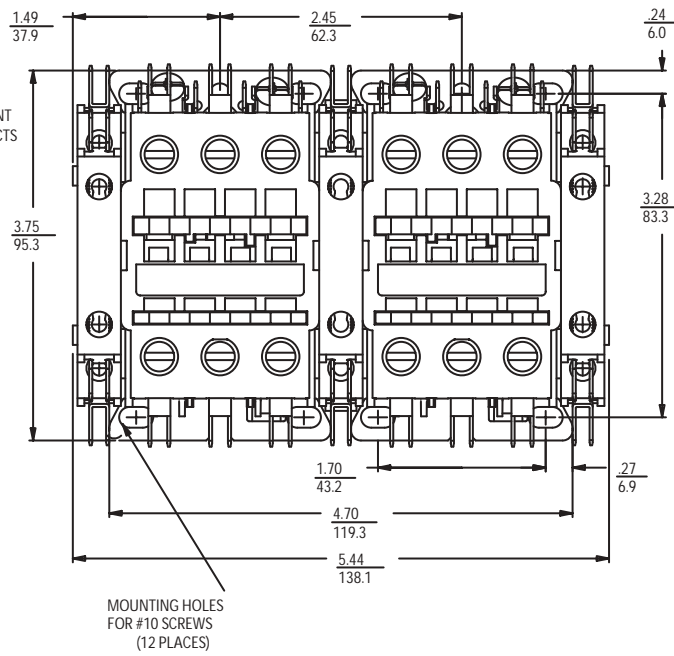
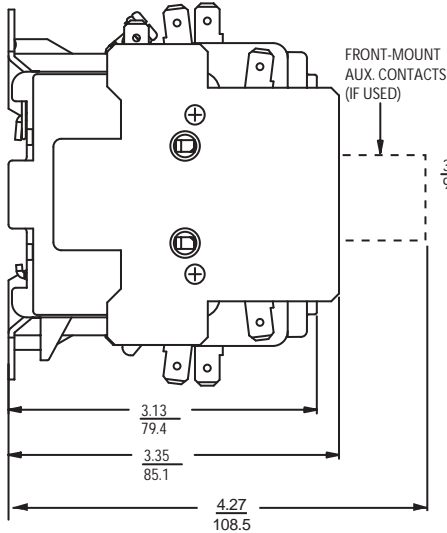


Outline Drawings

CR455A + 250V Aux. Contacts

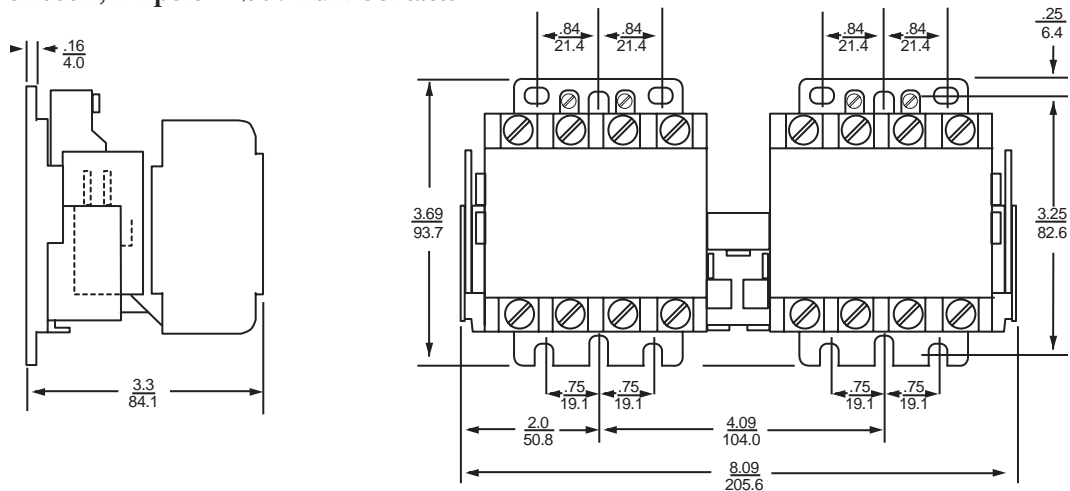


CR455A + 600V Aux. Contacts

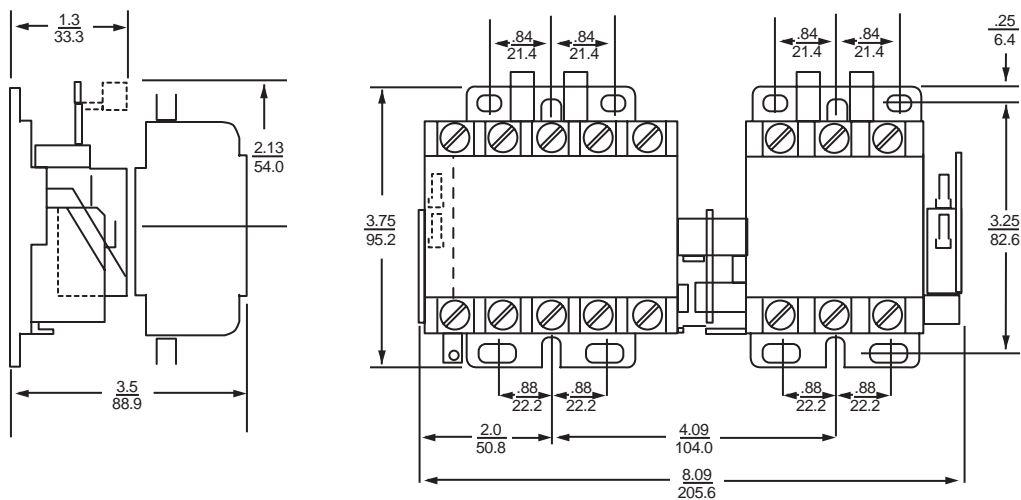


Dual Dimensions $\frac{\text{Inches}}{\text{mm}}$ for Estimating Only

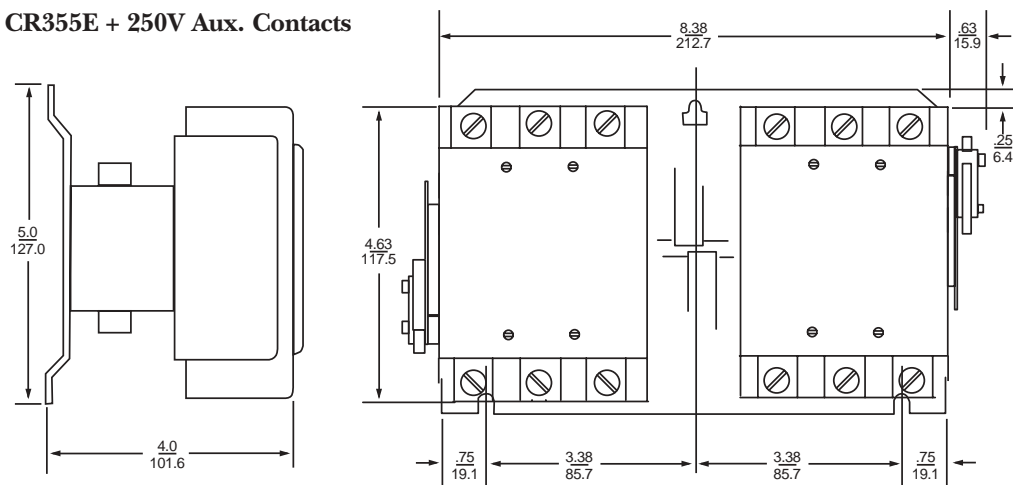
CR355A, 4-4 pole + 250V Aux. Contacts



CR355A, 5-3 pole + 250V Aux. Contacts



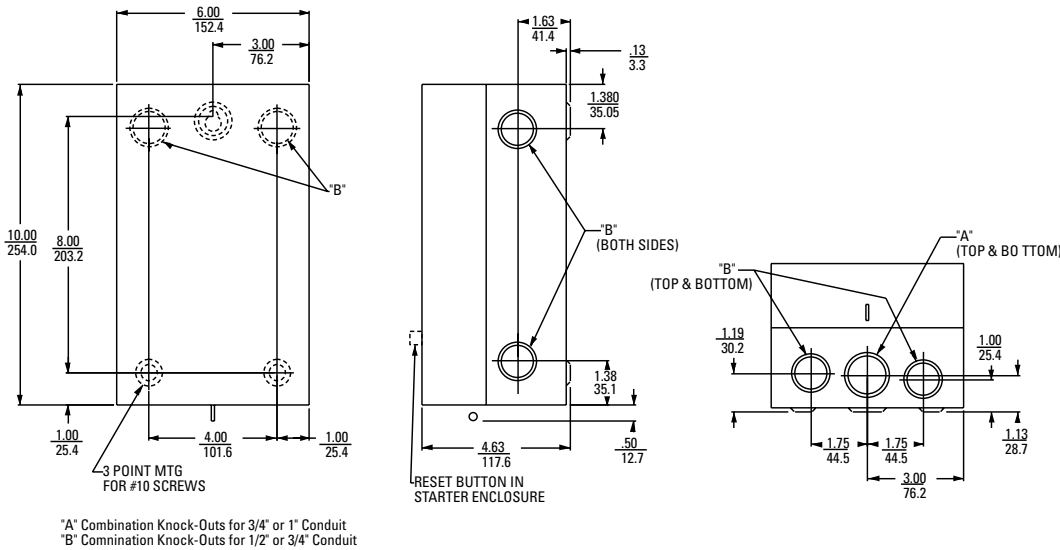
CR355E + 250V Aux. Contacts



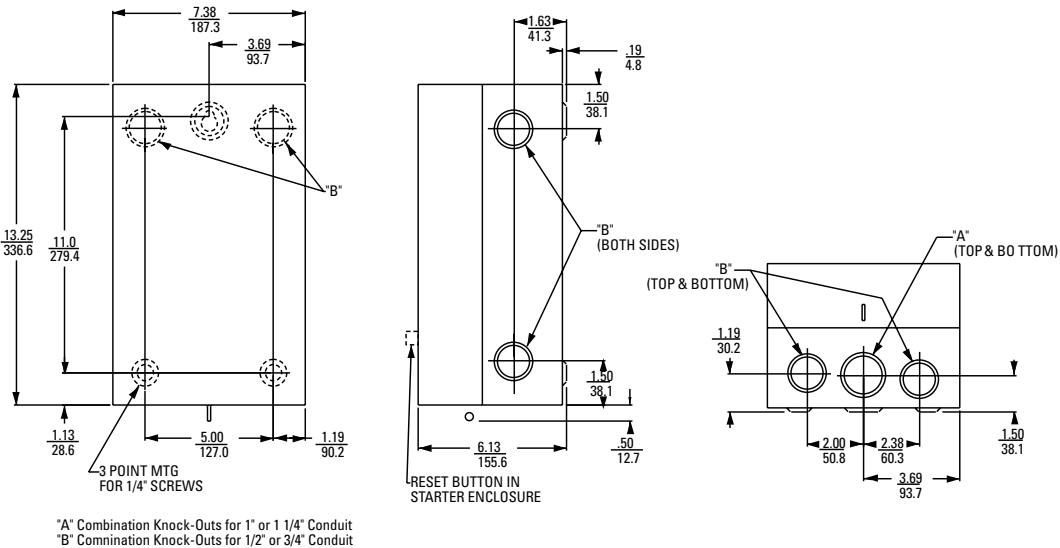
Outline Drawings

Dual Dimensions $\frac{\text{Inches}}{\text{mm}}$ for Estimating Only

Enclosure CR453XE1A, CR353XE1AA (without reset button), CR353XE1BB (with reset button)



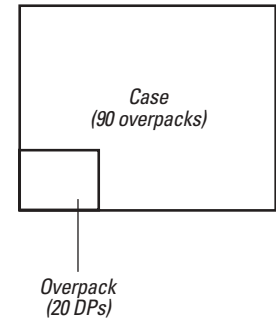
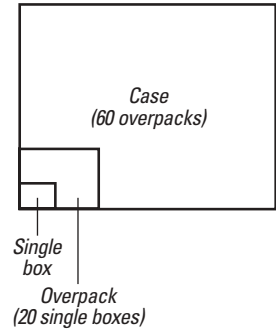
Enclosure CR353XE1BC



Bulk Pack Data

CR453C packaging

| Packaging | Description | Units | Item | Weight | Dimensions (H x W x D) |
|--------------------------|----------------------------|----------------|------------------|---------------------|------------------------|
| Units in single boxes | Single box | 1 | 1-pole | 10.1 oz. | .3" x 2.4" x 3.7" |
| | | | 1-pole + shunt | 10.4 oz. | |
| | | | 2-pole | 10.5 oz. | |
| | Overpack (20 single boxes) | 20 | 1-pole | 2.5 lbs. | 7.9" x 8" x 13" |
| | | | 1-pole + shunt | 2.6 lbs. | |
| | | | 2-pole | 2.6 lbs. | |
| | Case (60 overpacks) | 1,200 | 1-pole | 180.8 lbs. | 39" x 43.3" x 42.1" |
| | | | 1-pole + shunt | 185.2 lbs. | |
| | | | 2-pole | 186.8 lbs. | |
| | 20' container (20 cases) | 24,000 | 1-pole | 3,616 lbs. (net) | 7.8' x 7.7' x 19.4' |
| | | | 1-pole + shunt | 3,704 lbs. (net) | |
| | | | 2-pole | 3,736 lbs. (net) | |
| 40' container (44 cases) | 52,800 | 1-pole | 7,955 lbs. (net) | 7.8' x 7.7' x 39.5' | |
| | | 1-pole + shunt | 8,149 lbs. (net) | | |
| | | 2-pole | 8,219 lbs. (net) | | |
| Units bulk packed | Overpack (20 DPs) | 20 | 1-pole | 2.5 lbs. | 3.7" x 11.2" x 14.2" |
| | | | 1-pole + shunt | 2.6 lbs. | |
| | | | 2-pole | 2.6 lbs. | |
| | Case (90 overpacks) | 1,800 | 1-pole | 236.5 lbs. | 41.3" x 44.5" x 35.4" |
| | | | 1-pole + shunt | 243.1 lbs. | |
| | | | 2-pole | 245.5 lbs. | |
| | 20' container (24 cases) | 43,200 | 1-pole | 5,676 lbs. (net) | 7.8' x 7.7' x 19.4' |
| | | | 1-pole + shunt | 5,834 lbs. (net) | |
| | | | 2-pole | 5,652 lbs. (net) | |
| | 40' container (52 cases) | 93,600 | 1-pole | 12,298 lbs. (net) | 7.8' x 7.7' x 39.5' |
| | | | 1-pole + shunt | 12,641 lbs. (net) | |
| | | | 2-pole | 12,766 lbs. (net) | |



Bulk Pack Data

CR453A bulk pack

CR453A single pack (non-stock)

| Product | Min. order / additional multiples | Weight per box | Dimensions per box (H x W x D) |
|----------------------------------|-----------------------------------|----------------|--------------------------------|
| Contactors with no aux. contacts | 96/24 | 1 lb. | 3.5" x 2.5" x 4.25" |
| Contactors with 1 aux. contact | 108/18 | 1.1 lbs. | 3.5" x 3" x 4.25" |
| Contactors with 2 aux. contacts | 90/15 | 1.2 lbs. | 3.5" x 3.5" x 4.25" |
| Starters | 48/24 | 3.1 lbs. | 7.25" x 5.75" x 8" |
| 2-speed controllers | 48/24 | 3.1 lbs. | 7.25" x 5.75" x 8" |

CR453A corrugated box (with returnable trays)

| Product | Min. order / additional multiples | Items per tray | Trays per box | Weight per box | Dimensions per box (H x W x D) |
|----------------------------------|-----------------------------------|----------------|---------------|----------------|--------------------------------|
| Contactors with no aux. contacts | 96/32 | 8 | 4 | 30 lbs. | 7.5" x 19" x 19" |
| Contactors with 1 aux. contact | 96/32 | 8 | 4 | 30 lbs. | 7.5" x 19" x 19" |
| Contactors with 2 aux. contacts | 96/32 | 8 | 4 | 30 lbs. | 7.5" x 19" x 19" |
| Starters | 48/24 | 6 | 4 | 74 lbs. | 14.25" x 23.5" x 25" |
| 2-speed controllers | 48/24 | 6 | 4 | 74 lbs. | 14.25" x 23.5" x 25" |

CR453A skid pack (with returnable trays)

| Product | Min. order / additional multiples | Items per tray | Trays per layer | Layers per skid | Weight per layer | Dimensions per layer (H x W x D) |
|----------------------------------|-----------------------------------|----------------|-----------------|-----------------|------------------|----------------------------------|
| Contactors with no aux. contacts | 240/80 | 8 | 10 | 3 to 8 | 45 lbs. | 4" x 40" x 48" |
| Contactors with 1 aux. contact | 240/80 | 8 | 10 | 3 to 8 | 50 lbs. | 4" x 40" x 48" |
| Contactors with 2 aux. contacts | 240/80 | 8 | 10 | 3 to 8 | 55 lbs. | 4" x 40" x 48" |
| Starters | 120/40 | 4 | 10 | 3 to 8 | 55 lbs. | 4" x 40" x 48" |
| 2-speed controllers | 120/40 | 4 | 10 | 3 to 8 | 50 lbs. | 4" x 40" x 48" |



GE Industrial Systems

*General Electric Company
41 Woodford Avenue, Plainville, CT 06062
www.GEindustrial.com*

DET-264A 1102

©2002 General Electric Company